

# MONTANA CHESS NEWS

SEP.-OCT.-NOV.-DEC., 1989

VOLUME XIV - ISSUE 4

## MIKE JENSEN SWEEPS UP STATE TITLE

### LENCHNER WINS CHINOOK OPEN

### BRENNAN CAPTURES POSTAL CHAMPIONSHIP

NOVEMBER 4-5, 1989: TURKEY OPEN ### Room 362, Social Science Building, U of MT Campus, Missoula, MT 59812. 5 Round Swiss: 9:30am, 2:00pm, 7:00pm; 8:30am, 1:00pm. 40 moves / 2 hours, 20 moves / hour. USCF & MCA/Other state membership required. Entry fee = \$10 advance, \$15 at site 8:00-9:00am Nov. 4. Prizes: 1st - \$100, 2nd - \$50; Best Under 1700 - \$30, 1500 - \$15; Trophy - Biggest Upset. Sponsor - University-Community Chess Club / William H. McBroom, 2321 Raymond Ave., Missoula, MT 59802. 406-728-4654 after 5.

JANUARY 13-14, 1990: WINTER OPEN ### Conference Room, Plaza Office Building, 1629 Avenue D, Billings, MT 59102. 4 Round Swiss: 1:00pm, 6:00pm; 8:00am, 1:00pm. 40 moves / 2 hours, 20 moves / hour. USCF & MCA/Other state membership required. Entry fee = \$10 advance, \$15 at site Noon-12:30pm Jan. 13. Prizes: \$\$ per entries. Sponsor - Montana Chess Association / Bill Lynch, 4245 Palisades Park Dr., Billings, MT 59106. 406-652-2063 after 5.

FEBRUARY ??-??, 1989: VALENTINE OPEN ### Sponsor UCCC, Details to follow next issue.

APRIL 14-15, 1989: CROCUS OPEN:### Missoula, MT. Sponsor UCCC. Details to follow.

\*\*\*\*\*

1989-1990 MONTANA GRAND PRIX: Mike Jensen's victory in the Montana Closed State Championship (see article on page 3) has propelled him into the early lead with 23.80 points. Paul Motta, the 1988-89 Champion, is hot on his heels with 19.04. Three others have got into "double figures" at this stage: Kip Limesand with 12.32; Jon Lenchner with 10.40; and Bob Mitchell with 10.10. Points are awarded to the 1st-5th Montana finishers in each event advertised statewide (provided they have a positive score) by the formula:  $C * \text{No. of Rounds} * \text{Average Rating Event Players} / 1500$ , where  $C = 2.0$ -1st,  $1.6$ -2nd,  $1.2$ -3rd,  $0.8$ -4th and  $0.4$ -5th. Ties are broken using the methods set for each event. The top two finishers after the Montana Open are seeded into the Montana Closed Championship Playoff.

\*\*\*\*\*

Paul Motta has prepared a special treat with his personal coverage of the Montana Closed Championship in Great Falls. His three page article begins on page 3. Under old business we have reports on the Billings Open in June and an Update on UCCC events from spring to fall. Other current affairs include the Chinook Open and the 88-89 Postal Championships. All of that has left insufficient room for a special article submitted by Missoula USCF Master Jon Lenchner, which will be featured in the Jan.-Feb.-Mar. 1990 Issue. Enjoy the wealth - and start thinking about material that you could contribute to future issues!

Don Price of Bozeman passed on an idea from his runner's organization which I would like to implement for the MCA: If you know someone who plays Chess that isn't an MCA or USCF member, send their name to me and I'll send them a complimentary issue and invitation to join. As they may in turn submit other names, we could reach a larger group of people.

CHINOOK OPEN

October 7-8, 1989

P1 Name	Rate	RD1	RD2	RD3	RD4	RD5	TOT
1 Jon Lenchner	2262	W9	W7	W2	D4	W6	4.5
2 Kip Stubberud	2087	W18	W11	L1	W10	W4	4.0
3 Kip Limesand	1655	W20	L6	W8	W11	W10	4.0
4 Thad Suits	1913	W17	W13	W6	D1	L2	3.5
5 Dennis Petrak	1667	W16	D10	W7	L6	X--	3.5
6 Arman Goplen	1657	W15	W3	L4	W5	L1	3.0
7 Nick Pazderic	1700	W14	L1	L5	W18	W12	3.0
8 Doug Logan	1377	L11	W19	L3	W16	W13	3.0
9 R. Cleavenger	1441	L1	W15	L11	W14	W18	3.0
10 Bill McBroom	1772	W12	D5	W13	L2	L3	2.5
11 Ron Erickson	1753	W8	L2	W9	L3	U--	2.0
12 John Kennedy	1389	L10	W20	W18	L13	L7	2.0
13 Bob Mitchell	1602	W19	L4	L10	W12	L8	2.0
14 Dick Stuckey	1189	L7	W17	L15	L9	W19	2.0
15 Roger LaVoie	UNR	L6	L9	W14	W17	L16	2.0
16 Dave Gentry	1091	L5	L18	W20	L8	W15	2.0
17 John Barto	1402	L4	L14	W19	L15	W20	2.0
18 Ken Cook	1418	L2	W16	L12	L7	L9	1.0
19 Brian Fenlason	UNR	L13	L8	L17	W20	L14	1.0
20 Seth Stuckey	UNR	L3	L12	L16	L19	L17	0

Black hangs tough with aggressive counterplay in this contest until White finds himself without enough time and without enough good moves to play.

RD5 BD3 NIMZOVITCH-LARSEN 1 b3 e5 2 Bb2 Nc6 3 c4 d6 4 e3 Bf5 5 d3 Nf6 6 N f3 g6 7 Nc3 Bg7 8 Be2 0-0 9 0-0 e4 10 Nxe4 Bxe4 11 dxe4 Nxe4 12 Bxg7 Kxg7 13 a3 Re8 14 R c1 h5 15 Qd5 Nf6 16 Qd2 Qe7 17 Qc3 Kg8 18 Bd3 Ne5 19 Nxe5 Qxe5 20 Qxe5 Rxe5 21 b4 h4 22 c5 d5 23 h3 Kg7 24 a4 g5 25 f4 Rxe3 26 fxx5 Rxd3 27 Rxf6 Rg3 28 Rcf1 Rf8 29 Rlg4 Rxx5 30 R6f5 f6 31 Rxx5+ fxx5 32 Rxf8 Kxf8 33 Kf2 Kf7 34 Ke3 Ke6 35 Kd4 c6 36 a5 a6 37 b5 axb5 38 Kc3 Time-White. 0-1

It was great to see Kip Stubberud back in action after nearly two years layoff. However, after seeing White's fifth move in this game some of us wondered if this could be the REAL Stubberud?

RD5 BD2 Stubberud-Suits KING'S INDIAN 1 N-KB3 N-KB3 2 P-QB4 P-QB4 3 P-KN3 P-KN3 4 B-N2 B-N2 5 0-0 !!! 0-0 6 P-Q4 PxP 7 NxP N-B3 8 N-B3 P-QR3 9 P-QR4 Q-B2 10 NxN NPxN 11 P-R5 R-N1 12 Q-B2 P-Q3 13 B-Q2 P-B4 14 P-K4 P-K3 15 KR-Q1 R-Q1 16 N-R4 N-Q2 17 B-B4 P-K4 18 B-N5 P-B3 19 B-K3 B-N2 20 Q-Q2 B-KB1 21 N-B3 B-K2 22 B-R3 N-B1 23 B-R6 R-K1 24 BxN RxB 25 B-K6+ K-N2 26 B-Q5 B-B1 27 N-R4 B-Q2 28 N-N6 B-Q1 29 P-QN4 Q-R2 30 NxN QxN 31 P-N5 PxP 32 P-R6 B-N3 33 PxP QxP 34 P-R7 QR-R1 35 BxR RxB 36 QxP RxB 37 RxR BxR 38 Q-Q7+ Black Resigns. 1-0

Thad Suits helped to smooth operations by bringing his PC computer pairing software that has been used for major events in Minnesota. All in all a very nice event - thanks Dennis!

Games selected by Dennis Petrak.

Notes and commentary by - Bill Lynch.

\*\*\*\*\*

1988/89 MONTANA POSTAL CHAMPIONSHIP

P1 Name	1	2	3	4	5	6	7	TOT
1 Les Brennan	x	½	1	1	1	1	1	5.5
2 Sherwood Moore	½	x	½	1	1	1	1	5.0
3 Duane Hildenstab	0	½	x	½	½	1	1	3.5
4 Don Price	0	0	½	x	1	1	0	2.5
5 Bill McBroom	0	0	½	0	x	½	1	2.0
6 Chad Robinson	0	0	0	0	½	x	1	1.5
7 John Kennedy	0	0	0	1	0	0	x	1.0

Following up his second place finish in the 87/88 MT postal in fine style, Les Brennan forged a near perfect score to capture first place in the 88/89 competition. Only Sherwood Moore could keep the pace by holding Les to a draw, but he slipped to second when he couldn't find a win in his game with Duane Hildenstab. Duane yielded a full point only to less - and improved to third place over his 2-3 outing the previous year. For games - see page 6.

# The MONTANA STATE CLOSED CHAMPIONSHIP

## A report by Paul Motta

This year's run for the title was intense as the six qualifiers, Romie Carpenter, Bill Lynch, Mike Jensen, Jim Loy, Les Brennan, and yours truly, Paul Motta, prepared well beforehand for some hard-hitting chess. It was exciting to feel the anticipation and speculation as some of the players were trying to figure out what opening & defense each of their opponents was going to employ. When the clocks finally started there were some surprises and some disappointments.

### ROUND 1

Jensen	1	vs. Motta	0
Lynch	1	vs. Carpenter	0
Lynch	1	vs. Brennan	0

Bill offers a pawn to Les in the Smith-Morra Gambit which Les respectfully declines. Later, though, Les grabs a pawn and tries to hold on as Bill continues to develop pieces and build for the attack. When Les finally does castle it is too late. Bill opens up his enemy's position and forces Les's king across the board into a mating net.

Romie tries a new line vs. Loy's 1. b3 opening. A tense positional struggle ensues. Jim is saddled with an isolated queen-rook pawn early in the game but as the position was steered to the queenside Romie's queen walked into a deathtrap and resignation followed.

Mike and Paul try to surprise each other by playing a double king-pawn

opening. It transposes into a Vienna Game and looks fairly equal for a while. However, Paul makes a mistake which prohibits him from castling and Jensen capitalizes. In a bad position, Motta loses on time.

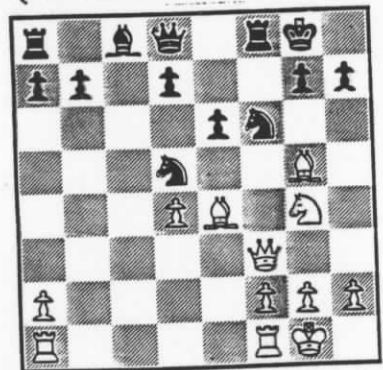
### SICILIAN DEFENSE

W: Bill Lynch (1902)  
B: Les Brennan (1745)

1. e4 c5 2. c3 Nf6 3. e5 Nd5 4. d4 cd 5. Nf3 e6 6. cd Nc6 7. Bc4 Nb6 8. Bb3 Bb4+ 9. Nc3 Na5 10. Bb2 Nd5 11. O-O Bc3 12. bc Nc3 13. Qd3 Nd5

At this point Les has moved the king knight six times around the board and neglected the development of the rest of his army. Now Bill proceeds to efficiently utilize his developed pieces to get to the opposing king.

14. Bg5 f6 15. ef Nf6 16. Ne5 Nc6 17. Ng4 Nb4 18. Qf3! Nbd5 19. Be4! O-O



20. Bd5 ed 21. Nf6+ g7 22. Bh6 Re8 23. Qg3+ Kf7

The death march begins!  
24. Qg7+ Ke6 25. Rf1+ Kd6  
26. Qg3+ Kc6 27. Rec1+ Kb6  
28. Qd6+ Ka5 29. Bd2+ Res.

### ROUND 2

Carpenter	0	vs. Jensen	1
Motta	1	vs. Brennan	0
Lynch	1	vs. Loy	0

Romie and Mike started out cautiously with a closed type of game, each player building up behind their pawns in anticipation of the big push. On move 15 Romie sacrificed a pawn in an attempt to begin an attack before his opponent could castle. However, Jensen counterattacked with a dubious piece sacrifice on d3 and began to seize the initiative. Romie missed his chance to turn the tables on move 25 when he walked his king into a mating net. The inevitable death march to the middle of the board followed and checkmate was administered by Mike.

Lynch and Loy entered into a sharp & offbeat variation of the Pirc. Jim made a serious mistake on move 9 and had to resign on move 11.

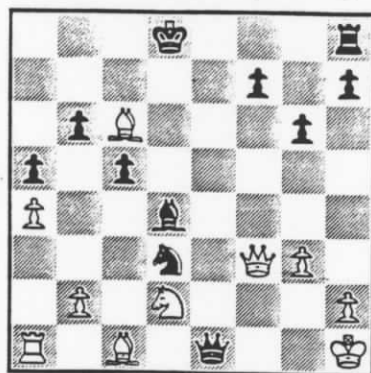
Paul and Les chose to venture into the dangerous waters of the widely feared Blackmar-Diemer Gambit. Les accepted the pawn and was trying to hold his own but rapid development and an exchange sac by Motta soon led to Brennan's demise.

### BLACKMAR-DIEMER GAMBIT

W: Paul Motta (1969)  
B: Les Brennan (1745)

1. d4 d5 2. e4 de 3. Nc3 Nf6 4. f3 ef 5. Nf3 Bf5 6. Bc4 e6 7. O-O Nbd7 8. Bg5 h6?! 9. Bf6 Qf6 10. h3 h5 11. Qe1 g5 12. Ne4 Qe7 13. Nfg5 Rg8? 14. Rf4! ef 15. Bf7+ Kd8 16. Bg8 fe 17. Ne6+ Kc8 18. Qa5 Qd6 19. Nf8 Q:d4+ 20. Kh1 Nf8 21. Qf5+ Nd7 22. Q:h5 b6 23. Rd1 Q:b2? 24. Qd5 Rb8 25. Be6 Qg7 26. Bd7+ 1-0

W: Romie Carpenter (1900)  
 B: Mike Jensen (2012)



(after 25. .... Qe1+)

It's amazing how one move can mean the difference between a won game and an immediate loss. In this position Romie could have replied with either 26. Qf1 (provoking the exchange of queens) or 26. Nf1! which attacks the knight on d3 and threatens both Qd5+ (leading to mate) and Bg5+ (winning the queen). Either move leads to a won game for Carpenter. Moving the king out of check, however, proves suicidal.

25. Kg2?? Qg1+ 26. Kh3 Nf2+  
 27. Kh4 Qh2+ 28. Kg5 f6+  
 29. Kf4 Qh6 checkmate

### ROUND 3

Jensen 1 vs. Lynch 0  
 Brennan 1 vs. Loy 0  
 Carpenter 0 vs. Motta 1

Jensen and Lynch, the only undefeated players at this point, clash in a game that turns out to be very positional. The game was equal most of the way, both players searching hard for a way to break through.

After many hours, Mike finally found a way to pick off a couple of pawns on Bill's queenside and then he

cleverly switched the battle over to the kingside where he exploited the weaknesses and penetrated Lynch's position, forcing resignation.

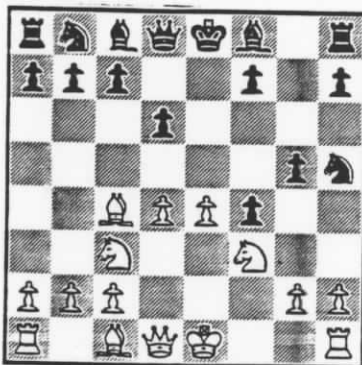
Brennan lures Loy into the Vienna Game, Les's favorite opening. Due to some passive opening moves by Jim, a wild game ensues. Les brings his queen into play early and draws Jim's king into a crossfire. Loy's queen gets separated from the action and Brennan follows up by administering checkmate to his opponent.

Carpenter and Motta went at it again, this time transposing into an English. Romie initiates an early attack on the king-rook file against Paul's castled king but after the attack slows, Paul begins a counterattack that nets a pawn and more. Romie gracefully bows out.

### VIENNA GAME

W: Les Brennan (1745)  
 B: Jim Loy (1897)

1. e4 Nf6 2. Nc3 e5 3. f4 d6?! 4. Nf3 ef 5. d4 Nh5  
 6. Bc4 g5?!



7. Ne5! dxe 8. Qh5 Qf6  
 9. Nd5 Qd8 10. dxe Be6  
 11. Nf6+ Ke7 12. Be6 Ke6  
 13. Qg5 h6? 14. Qf5+ Ke7  
 15. Bf4 Qd4 16. Nd5+! Kd8  
 17. Rd1 Qb2 18. Nb6+ Ke8  
 19. Qc8+ Ke7 20. Qd8+ Ke6  
 21. Qf6 checkmate

### AFTER THREE ROUNDS:

Mike Jensen	3
Bill Lynch	2
Paul Motta	2
Jim Loy	1
Les Brennan	1
Romie Carpenter	0

### ROUND 4

At this point it looked like only the top three players had a shot at the title. Jensen was playing well, Lynch still had some punch left, and Motta was looking for a final surge to the finish line.

Motta 1	vs.	Lynch 0
Loy 0	vs.	Jensen 1
Brennan 1/2		Carpenter

Bill and Paul crossed swords briefly in a sharp opening. After the smoke cleared Bill found himself down a piece and peacefully resigned.

Loy and Jensen fought hard in a semi-closed game which focused on control of the c-file. After simplifying down to a dead drawn ending Jim found out that he had not made the time control and lost on time.

Les was at it again with his beloved Vienna Opening but this time it was against Romie who has played against the Vienna many times. Romie turned the tables on his opponent with a speculative but sound piece sac which forced Brennan's king to move away from safety into danger. Les defended well but then, through careful piece play, Carpenter ended up a pawn to the good. However, the pawn was

inadvertently given back and in an equal position the two gladiators agreed to a draw.

### VIENNA OPENING

W: Les Brennan (1745)  
B: Romie Carpenter (1900)

1. e4 Nf6 2. Nc3 e5 3. f4 d5 4. fxe N:e4 5. d3

The Oxford variation of the Vienna Game. Romie usually plays 5... N:c3 in this position but he decides to play sharp and for a win.

... Bb4!? 6. d:e Qh4+ 7. Ke2 Nc6 8. g3 Qg4+ 9. Kf2 Bc3 10. Qg4 Bd4+ 11. Be3 B:e3+ 12. K:e3 Bg4 13. ed N:e5

So far the players have played out this book line exactly. At this point the position is considered equal.

14. Kf4 f6 15. Re1 g5+ 16. Ke3 O-O 17. Be2 Rfe8! Kd2 Be2 19. R:e2 Rad8 20. Rf2 Rd3+ 21. Kc1 Ng4 22. Rf1 Nf2 23. c4!  
(If 23. Rf2??? then Re1 mate)  
Rf5 24. Nh3! Nd3+ 25. Kc2 Rf1 26. Rf1 Ne5 27. R:f6  
Draw

### OGD - SLAV DEFENSE (by transposition)

W: Jim Loy (1897)  
B: Mike Jensen (2012)

1. c4 c6 2. Nf3 d5 3. cd cd 4. d4 Nf6 5. Nc3 Nc6 6. Bf4 a6 7. e3 Bg4?! 8. Be2 e6 9. Qb3 Bf3 10. Bf3

Now Jim has the two bishops but will they prove to be an advantage?

Na5 11. Qc2 Rc8 12. a3 16 13. B:d6 Q:d6 14. Qa4+ :e6 15. O-O O-O 16. Rac1 and7! 17. Be2 Nb6 18. Qd1 Na5 19. Bd3 Nac4 20. Rc2 Rc7 21. Qe2 N:b2! 22. R:b2 Rc3 23. Rfb1 Rfc8 24. g3

Q:a3 25. R:b6 R:d3 26. R:b7 g6 27. Ra7 Rdc6 28. Rbb7 Qc1+ 29. Kg2 R3c7 30. Q:a6 Qc2 and in this position Black lost on time. What could have followed was 31. R:c7 R:c7 32. R:c7 Q:c7 and draw.

### ROUND 5

Motta 1 vs. Loy 0  
Jensen 1 vs. Brennan 0  
Lynch 1/2 Carpenter

Another sharp opening line by Paul Motta, this time against the Pirc, led to the early resignation of Jim Loy.

With nothing at stake and eyes sagging, Lynch and Carpenter agree to an early draw.

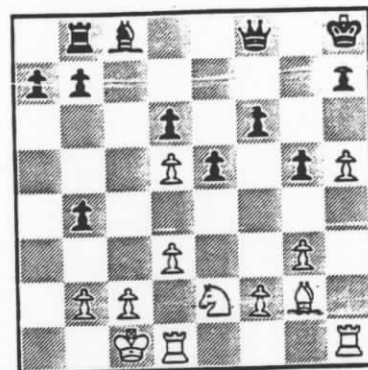
The upset of the tourney was in the making this round as Mike Jensen began an early attack on the king-rook file against Les Brennan and in the process got his queen trapped. Despite an advantageous position and winning chances, Les played passively and allowed Mike to penetrate his position with the rooks. Jensen turned what apparently was a lost position into a won game and thereby secured a clear first place and the title of 1989 Montana State Champion. Congratulations, Mike!

### KINGS INDIAN ATTACK (CLOSED SICILIAN)

W: Mike Jensen (2012)  
B: Les Brennan (1745)

1. e4 c5 2. Nc3 Nc6 3. g3 g6 4. Bg2 Bg7 5. d3 d6 6. Be3 e5 7. Qd2 Rb8 8. Nge2 Nge7 9. Bh6 O-O 10. h4 Nb4?!

11. O-O f6 12. h5? Bh6!  
13. Q:h6 g5!  
Ding Dong the queen is dead!  
14. a3 Kh8  
The knight is coming back home to g8 to nab the queen.  
15. Q:f8+ Q:f8 16. ab cb  
17. Nd5 N:d5 18. ed



In this position Black has several moves that could lead to a winning position. Possibly best here would be .. f5! with the idea of ... f4. Black must play aggressively and keep the White pieces from achieving harmony and invading the king position.

... h6? 19. f4!

Les weakened his white squares critically when he moved the king-rook pawn. Not only does Mike's bishop become more powerful but now with his f4 push, Jensen opens the f-file and invades.

Bg4 20. Re1 B:e2? 21. R:e2 Kg7 22. f:g f:g 23. Rf1! Qe7 24. Ref2 a5? 25. Bh3 g4 26. Bg2 a4 27. Be4 Qg5+ 28. Kb1 Q:h5 29. Rf6 Rd8 30. R1f5 Qe8 31. Re6 Qd7 32. R5f6 Q:e6 33. R:e6 1-0

### FINAL STANDINGS

Mike Jensen	5.0
Paul Motta	4.0
Bill Lynch	2.5
Les Brennan	1.5
Romie Carpenter	1.0
Jim Loy	1.0

POSTAL GAMES!

Brennan-Hildenstab VIENNA GAME 1 e4 e5 2 Nc3 Nc6 3 Bc4 Bc5 4 Qg4 g6 5 Qf3 Nf6 6 Nge2 d6 7 d3 Be6 (Black should play 7...Bg4 - Brennan) 8 Bg5 Bxf2+ 9 Qxf2 N g4 10 Qh4 Qd7 11 Bxe6 Qxe6 12 Nd5 0-0? 13 Qxg4! Qxg4 14 Nf6+ Black resigns. 1-0

Brennan-Robinson SICILIAN 1 e4 c5 2 Nc3 Nc6 3 f4 g6 4 Nf3 Bg7 5 Bc4 e6 6 f5 Nge7 7 fx e6 dxe6 8 d3 0-0 9 0-0 a6 10 a4 b6 11 Ne2 Bb7 12 c3 Qd6 13 Bf4 Qd7 14 Qel Rad8 15 Qh4 e6 16 Bh6 Na5 17 Ba2 Kh8 18 Nf4 g5 19 Bxg7+ Black Resigns. 1-0

Brennan-Moore VIENNA GAME 1 e4 e5 2 Nc3 Nc6 3 Bc4 Nf6 4 d3 Na5 5 Nge2 Nxc4 6 dxc4 Bb4 7 0-0 Bxc3 8 Nxc3 d6 9 Bg5 Be6 10 b3 h6 11 Bxf6 Qxf6 12 Nd5 Bxd5 13 cxd5 0-0 14 c4 Qf4 15 Qd3 f5 16 f3 Qg5 17 a4 fxe4 18 fxe4 b6 19 h3 a5 20 Rxf8+ Rxf8 21 Rf1 Rxf1+ 22 Kxf1 Qf4+ 23 Ke2 Kf7 24 Qf3 Qx f3+ 25 Kxf3 g5 26 Ke2 Ke7 Draw Agreed.  $\frac{1}{2}$ - $\frac{1}{2}$

Moore-McBroom QUEEN PAWN 1 d4 Nf6 2 Nf3 e6 3 Bg5 h6 4 Bxf6 Qxf6 5 e4 d6 6 e5 dxe5 7 dxe5 Qe7 8 Nbd2 Qb4 9 Qc1 Bd7 10 c3 Qf4 11 B d3 Nc6 12 Nc4 Qxc1 13 Rxc1 g5 14 h3 b5 15 Ncd2 a6 16 0-0 Bc5 17 Ne4 Bf8 18 Nf6+ Ke7 19 N xd7 Kxd7 20 Rcd1 Black Resigns. 1-0

Hildenstab-Moore ENGLISH 1 c4 Nf6 2 Nc3 e6 3 N f3 c5 4 e4 Nc6 5 d4 cxd4 6 Nxd4 d6 7 Be2 Be7 8 0-0 0-0 9 Nxc6 bxc6 10 Bf3 e5 11 Be3 Be6 12 Be2 d5 13 exd5 cxd5 14 Bf3 e4 15 cxd5 Bxd5 16 Nxd5 Nxd5 17 Bxe4 Nxe3 18 fxe3 Qxd1 19 Raxd1 Rxd8 20 Rxd8 Rxd8 21 Rc1 Bg5 22 Kf2 Re8 23 Rc5 h6 24 Kf3 Kf8 25 b3 g6 26 g4 Bh4 27 Rc7 Re7 28 Rc8+ Re8 29 Rxe8+ Kxe8 30 Ke2 Be7 31 Bc6+ Kf8 32 Kd3 Bc5 33 e4 f6 34 Kc4 Bg1 35 h3 Ke7 36 b4 Kd6 37 Be8 g5 38 Ba4 Bf2 39 Be8 Bb6 40 a4 Bf2 41 b5 Bb6 42 Bf7 Ba5 Draw Agreed.  $\frac{1}{2}$ - $\frac{1}{2}$

The last game completed, this contest took 11 months + 2 weeks.

\*\*\*\*\*

BILLINGS OPEN

June 10-11, 1989

P1 Name	Rate	RD1	RD2	RD3	RD4	RD5	TOT
1 Steve Smith	2149	W9	W7	W4	W11	W6	5.0
2 Bob Mitchell	1532	W14	W3	L6	W15	W8	4.0
3 Chad Robinson	1728	W20	L2	W5	D10	W11	3.5
4 Ron Matous	1853	W16	W22	L1	D6	W10	3.5
5 Kip Limesand	1559	W23	D6	L3	W18	W15	3.5
6 John Carr	1852	W13	D5	W2	D4	L1	3.0
7 Steve Scarff	1630	W17	L1	W16	L8	W18	3.0
8 Chris Soper	1517	W19	L15	W20	W7	L2	3.0
9 Mickey Crewse	1430	L1	W17	D14	W22	$\frac{1}{2}$ BY	3.0
10 James Jacobs	1588	W12	L11	W13	D3	L4	2.5
11 Bill Lynch	1919	$\frac{1}{2}$ BY	W10	W15	L1	L3	2.5
12 Daron Spicher	1111	L10	L16	W17	D13	W20	2.5
13 Chad Couture	1426	L6	W23	L10	D12	W21	2.5
14 Dave Gentry	1071	L2	BYE	D9	L16	W23	2.5
15 Les Brennan	1793	W18	W8	L11	L2	L5	2.0
16 Ken Cook	1428	L4	W12	L7	W14	L17	2.0
17 Charles Thiel	1345	L7	L9	L12	W19	W16	2.0
18 Dave McDonald	1423	L15	W21	W22	L5	L7	2.0
19 Ryan Boehler	NON	L8	L20	W23	L17	BYE	2.0
20 Kirk Jacobs	1382	L3	W19	L8	D21	L12	1.5
21 Jason Bird	1096	L22	L18	BYE	D20	L13	1.5
22 Murray Strong	1541	W21	L4	L18	L9	WD	1.0
23 Dave Marriotti	1129	L5	L13	L19	BYE	F14	1.0

The largest Billings tournament in few years saw Dave McDonald lead a group of seven players from the Sidney High School. Unfortunately they ran into a tough contingent of five from MSU and three "big guns" from Wyoming. Steve Smith - "Top Gun" - swept the field for a perfect score. Three of the five MSU players "cashed in" on class prize money, while the Sidney crew was "shut out". But watch out for those guys - they'll be back.

RD2 BD6 Mitchell-Robinson SICILIAN 1 e4 c5 2 f4 Nc6 3 Nf3 g6 4 Bb5 Bg7 5 Nc3 a6 6 Bxc6 bxc6 7 0-0 e6 8 e5 Ne7 9 Ne4 Nd5 10 Nd6+ K e7 11 Ng5 Qb6 12 Nc4 Qb4 13 b3 f5 14 B a3 Qb5 15 d4 Kf8 16 Bxc5+ Kg8 17 Qd2 h6 18 Nf7 Rh7 19 N7d6 Qb8 20 Qa5 Bb7 21 Nb6 Nxb6 22 Qxb6 Bf8 Black Resigns. 1-0

RD3 BD1 Smith-Matous SICILIAN 1 e4 c5 2 Nc3 Nc6 3 f4 g6 4 g3 Bg7 5 N f3 e6 6 Bg2 Nge7 7 0-0 0-0 8 d3 d6 9 g4 d5 10 Qe1 Nd4 11 Nxd4 Bxd4+ 12 Kh1 Bg7 13 Qg3 f5 14 gxf5 exf5 15 Nxd5 Nx d5 16 exd5 Qd3 17 c4 Bd7 18 Qf2 Rfe8 19 Be3 b6 20 Rael Re7 21 d4 cxd4 22 B xd4 Bxd4 23 Qxd4 Rae8 24 Rxe7 Rxe7 25 Bf3 h6 26 Rg1 Rg7 27 Qe5 c5 28 b3 Kh7 29 Rel Qf2 30 Qe2 Qc5 31 Qe3 Qd6 32 Rb1 Qa3 33 Qd2 Qd6 34 b4 Bc6 35 Qc1 Bb7 36 c5 bxc5 37 bxc5 Qc7 38 Qc4 Qc8 39 c6 Ba6 40 Qc5 Bd3 41 Rel Qa6 42 c7 Qc8 43 Re7 Black Resigns. 1-0

RD4 BD1 Lynch-Smith CENTER COUNTER 1 e4 d5 2 exd5 Qxd5 3 d4 Nf6 4 Nc3 Qd6 5 Nf3 Bg4 6 Be2 7 Be3 Nc6 8 Qd2 0-0-0 9 0-0-0 a6 10 Ng5 Qd7 11 f3 Bf4 12 a3 Bg6 13 N5e4 Be7 14 Rhe1 h6 15 Bg1 Nxe4 16 fxe4 Bg5 17 Be3 Nxd4 18 Bxg5 hxg5 19 Qxg5 Rxh2 20 Kbl Rh7 21 Rd3 Qe8 22 Red1 Nc6 23 Rxd8+ Nxd8 24 e5 Rh8 25 Qe3 Kb8 26 Bf3 f6 27 exf6 gxf6 28 Ne4 Bxe4 29 Qx e4 Nc6 30 Rel e5 31 Rd1 Qe6 32 Bg4 Qf7 33 Bf5 Nd4 34 Bg6 Qe6 35 Rxd4 Rh1+ 36 Resigns 0-1

UCCC UPDATE April-September, 1989

1ST FALL OPEN	Rate	R1	R2	R3	TOT
1 Jon Lenchner	2262	W5	W4	W3	3.0
2 Nick Pazderic	1700	W6	L3	W5	2.0
3 Romie Carpenter	1900	BY	W4	L1	2.0
4 Bill McBroom	1772	W7	L1	X6	2.0
5 Sherwood Moore	1487	L1	W7	L2	1.0
6 Richie Harrie	1257	L2	BY	F4	1.0
7 Richard Gray	1425	L4	L5	BY	1.0

3RD SUMMER OPEN	Rate	1	2	3	4	TOT
1 Bill McBroom	1761	x	-	1	1	2.0
2 Ron Erickson	1753	-	x	1	1	2.0
3 Richie Harris	1257	0	0	x	1	1.0
4 Keith Baker	NEW	0	0	0	x	0

MATCH: Mike Jensen 2001 1 1 1 3.0  
 Dave Shuhart 1896 0 0 0 0

UCCC CHAMPIONSHIP	Rate	1	2	3	4	5	6	TOT
1 Dave Shughart	1877	x	0	1	1	1/2	1	3.5
2 Dan McCourt	1769	1	x	1	0	1	0	3.0
3 Nick Pazderic	1616	0	0	x	1	1	1	3.0
4 Bill McBroom	1754	0	1	0	x	1/2	X	2.5
5 Ron Erickson	1771	1/2	0	0	1/2	x	1	2.0
6 Tom Gluick	1462	0	1	0	F	0	x	1.0

MATCH: Nick Pazderic 1616 0 1 1 2.0  
 Ted Catton 1835 1 0 0 1.0

2ND SUMMER OPEN	Rate	1	2	3	4	TOT
Dave Shughart	1896	x	1	1	1	3.0
2 Bill McBroom	1761	0	x	1/2	1	1.5
3 Ron Erickson	1753	0	1/2	x	1	1.5
4 Sherwood Moore	1497	0	0	0	x	0

MATCH: Matt Guthrie 2080 1 1 0 1 3.0  
 Mike Jensen 2001 0 0 1 0 1.0

1ST SUMMER OPEN	Rate	1	2	3	4	TOT
1 Dave Shughart	1877	x	1	1	X	3.0
2 Bill McBroom	1754	0	x	1	X	2.0
3 Sherwood Moore	1462	0	0	x	1	1.0
4 Richie Harris	UNR	F	F	0	x	0

2ND SPRING OPEN	Rate	R1	R2	R3	R4	TOT
1 Jon Lenchner	2260	D3	W2	W7	W4	3.5
2 Dan McCourt	1769	W0	L1	W5	W7	3.0
3 Bill McBroom	1729	D1	W6	L4	W9	2.5
4 Mike Jensen	1990	W5	D7	W3	L1	2.5
5 Nick Pazderic	1650	L4	W9	L2	W8	2.0
6 Dave Shughart	1843	D9	L3	D8	W0	2.0
7 Romie Carpenter	1938	W8	D4	L1	L2	1.5
8 Sherwood Moore	1468	L7	W0	D6	L5	1.5
9 Lyle Petersen	1461	D6	L5	W0	L3	1.5
0 Richie Harris	UNR	L2	L8	L9	L6	0

b4+ 7 Bd2 Bxd2 8 Nbx2 0-0 9 e5 d5 10 Bd3 Ng5 11 0-0 Nh6 12 Qc2 g6 13 a3 Bf5 14 Racl Bx d3 15 Qxd3 Nf5 16 Rfel Rfe8 17 Nb3 Nce7 18 Ng5 Nc6 19 f4 Ng6 20 Nc5 Qc8 21 Re3 Nf5 22 R h3 h6 23 Nf3 Kg7 24 g4 Nxd4 25 Nxd4 Qxg4+ 26 Rg3 Qxf4 27 Nde6+ Black Resigns. 1-0  
 Many thanks to all the UCCC directors for submitting good material from each event. - ED

1F Carpenter-Lenchner MODERN DEF. 1 e4 d6 2 d4 Nf6 3 Nc3 g6 4 Bg5 c6 5 f4 Bg7 6 Nf3 h6 7 B h4 b5 8 Bd3 Bg4 9 h3 b4 10 e5 Bxf3 11 Qxf3 bxc3 12 exf6 cxb2 13 Rb1 exf6 14 Qe2+ Kd7 15 Qg4+ K c7 16 0-0 Nd7 17 f5 h5 18 Qf3 g5 19 Bel g4 20 hxg4 hxg4 21 Qg3 Bh6 22 Ba6+ Nb6 23 c4 Re8 24 R fel Rxe1+ 25 Rxe1 Kb7 26 c5 dxc5 27 d5 cxd5 28 Qf2 Qd6 29 Qxb2 Bf4 30 Qb5 Bh2+ 31 Kh1 Re5 32 Q a6+ Kc7 33 Rb1 Rh8+ 34 Kg1 Bd4+ 35 Kf1 0-1

M Shughart-Jensen QUEEN'S GAMBIT 1 d4 d5 2 c4 c6 3 Nc3 Nf6 4 Nf3 dxc5 5 e4 b5 6 e5 Nd5 7 Bd2 e6 8 Rc1 Bb7 9 Qc2 Nd7 10 Nxd5 cxd5 11 Be2 a5 12 0-0 b4 13 Ng5 Qb6 14 Be3 a6 15 f4 Be7 16 Rf3 h6 17 Rh3 a4 18 Bg4 Bxg5 19 fxg5 h5 20 Rf4 Ke7 21 Bxh5 b3 22 Rxf7+ Kxf7 23 Qxg6+ Ke7 24 Qg7+ K d8 25 Qxh8+ Kc7 26 Be8 bxa2 27 Rh7 a1=Q+ 28 Kf2 Q6xb2+ 29 White Resigns. 0-1

UC Shughart-McBroom ANDERSSON/PIRC 1 a3 Nf6 2 Nf3 g6 3 d4 Bg7 4 Nbd2 d6 5 e4 Nbd7 6 Bc4 e5 7 c3 c6 8 0-0 0-0 9 Re1 d5 10 Ba2 dxe4 11 Nxe4 Nxe4 12 Rxe4 exd4 13 Bg5 Qb6 14 Be7 dxc3 15 Bxf8 Kxf8 16 Qd6+ Kg8 17 Bxf7+ Kxf7 18 Qe7+ Black Resigns. 1-0 (18...Kg8 19 Ng5 Qb3 20 Ne6 Bh6 21 Rh4!)

UC McCourt-Pazderic CARO KANN 1 e4 c6 2 Nc3 d5 3 exd5 cxd5 4 Bb5+ Nc6 5 d3 a6 6 Bxc6+ bxc6 7 Nf3 e6 8 0-0 Be7 9 Ne5 Qc7 10 f4 Nf6 11 Qf3 Bb7 12 Ne2 c5 13 Qg3 g6 14 Q e1 Bd6 15 Ng3 Nd7 16 Nxd7 Qxd7 17 f5 Qe7 18 fx e6 Qxe6 19 Qf2 0-0 20 Bh6 Rfc8 21 Rael Qd7 22 Q f6 Bf8 23 Bxf8 Rxf8 24 Re7 Qc6 25 Rxf7 Qxf6 26 R 7xf6 Rxf6 27 Rxf6 Kg7 28 Rb6 Ra7 29 Re6 Kf7 30 R e2 Bc8 31 Kf1 Rb7 32 c3 Be6 33 Kel Bg4 34 Rf2+ K e7 35 h3 Be6 36 Kd1 a5 37 Kc1 a4 38 Ne2 Bf5 39 N f4 Bxd3+?? Black Resigns. 1-0

2S Moore-Shughart LARSEN DEFENSE 1 d4 b6 2 Nf3 e6 3 g3 Bb7 4 Bg2 Nf6 5 Bg5 Be7 6 Bxf6 Bxf6 7 c3 Q e7 8 0-0 h5 9 Nbd2 h4 10 e4 hxg3 11 fxg3 e5 12 N xe5 Bxe5 13 dxe5 Qxe5 14 Qf3 f6 15 Qg4 Qh5 16 Qx h5+ Rxh5 17 Rf5 Rxf5 18 exf5 Bxg2 19 Kxg2 Nc6 20 Rel+ Ne5 21 Nf3 d6 22 Nd4 Kd7 23 b3 c5 24 Ne6 g6 25 fxg6?? and White resigned after 41 moves. 0-1 After 25 Nf4 gxf5 26 Nd5! Rf8 27 Rf1 Ke5 28 Ne3 White should have the better game.

M Jensen-Guthrie SICILIAN 1 e4 c5 2 Nc3 d6 3 g3 Nc6 4 Bg2 g6 5 d3 Bg7 6 Be3 e5 7 Qd2 Ng e7 8 Bh6 0-0 9 h4 Nd4 10 0-0-0 b5 11 Rf1 b4 12 Nd5 Nxd5 13 exd5 Qa5 14 Kb1 Qa4 15 Bxg7 Kx g7 16 h5 Rh8 17 hxg6 hxg6 18 Rxh8 R-h8 19 Ne2 Bg4 20 Rh1+ Kg7 21 Qh6+ Kf6 22 Nxd4 cxd4 23 Q h4+ Kg7 24 Qxg4 Qb5 25 Qh4 a5 26 f4 Re8 27 Q h6+ Kf6 28 Qg5+ Kg7 29 f5 Black Resigns. 1-0

1S Shughart-Moore GIUCCO PIANO 1 e4 e5 2 N f3 Nc6 3 Bc4 Bc5 4 c3 Nf6 5 d4 exd4 6 cxd4 B

2ND SPRING: Jensen- Lenchner MODERN DEFENSE 1 e4 d6 2 d4 Nf6 3 Nc3 g6 4 Nf3 Bg7 5 B e2 0-0 6 0-0 c6 7 Be3 Ng4 8 Bg5 h6 9 Bh4 Qc7 10 h3 Nf6 11 Qd2 Nbd7 12 Bg3 Nh5 13 Bh4 g5 14 Ng5 hxg5 15 Qxg5 Nhf6 16 Bd3 e5 17 Ne2 Re8 18 Ng3 Nh7 19 Qd2 Ndf6 20 f4 Qb6 21 c3 ex d4 22 c4 d5 23 cxd5 cxd5 24 e5 Ne4 25 Nxe4 dxe4 26 Bxe4 Qh6 27 Bg3 Re5 28 Qd4 Re8 29 Qa4 Nf6 30 Rael Bd7 31 Qc4 Ne4 32 Re4 Re4 33 Qe4 Bc6 34 Qc2 Qg6 35 Qf2 Rd8 36 f5 Qh5 37 f6 B f8 38 Kh2 Bc5 39 Qc2 Bd6 40 Bd6 Kd6 41 Rf5 Qg6 42 h4 Rd5 43 g4 Qg4 44 Rd5 Qh4+ 45 Kgl Q g4+ 46 Kf1 Bd5 47 Qh2 Qd1+ White Resigns. 0-1

Shughart-Moore GIUCO PIANO 1 e4 e5 2 Nf3 Nc6 3 Bc4 Bc5 4 c3 Nf6 5 0-0 0-0 6 d4 exd4 7 cxd4 Bb6 8 e5 Ng4 9 Re1 d5 10 Bb3 f6 11 Nc3 Ne7 12 exf5 Nxf6 13 Bg5 c6 14 Ne5 Bf5 15 Qf3 Bxd 16 Rad1 Bxc3 17 bxc3 Ne4 18 Rxe4 Bx e4 19 Qxe4 Qd6 20 Re1 Rad8 21 Qd6 Ng6 22 Nf3 Rxe1+ 23 Nxe1 Re8 Draw Agreed. 1/2-1/2

Petersen-Shughart POLISH 1 b4 e5 2 Bb2 Bxb4 3 Bxe5 Nf6 4 c3 Ba5 5 e3 Nc6 6 Bg3 0-0 7 N f3 d6 8 h3 Re8 9 Na3 Be6 10 Bc4 d5 11 Bb3 Ne4 12 0-0 Nxc3 13 fxg3 Qd6 14 Ng5 Qxg 15 Qh5 h6 16 Nxe6 fxe6 17 Rf4 Qg5 18 Qf7+ Kh8 19 Raf1 Ne5 20 h4 Nxf7 21 hxg5 Nxc3 22 Ra4 Bb6 23 Rg4 c6 24 Bc2 Rf8 25 Rgf4 Kg8 26 Bg6 Rxf4 27 Rxf4 Rf8 28 d4 Bc7 29 Rg4 Rf6 30 Bd3 e5 31 Nc2 exd4 32 NXd4 Be5 33 Ne2 Nf7 34 c4 Nd6 35 cxd5 cxd5 36 Nf4 Bxf4 37 exf4 Nf5 38 g3 Kf7 39 Bxf5 Rxf5 40 Rh4 g6 41 Rxh Rh5 42 Rxh5 gxh5 43 Kf2 Ke6 44 Ke3 b5 45 Kd4 a5 46 Kc5 b4 47 Kb5 d4 48 Kc4 a4 49 Kxd b3 50 axb3 Draw Agreed. 1/2-1/2

\*\*\*\*\*

UCCC 1ST SPRING

March 9-23, 1989

P Name	Rate	R1	R2	R3	TOT
1 Ted Catton	1792	W4	D6	W2	2.5
2 Bill McBroom	1729	W7	W3	L1	2.0
3 Dave Shughart	1843	W5	L2	W6	2.0
4 Sherwood Moore	1468	L1	W10	W8	2.0
5 Tom Gluick	1475	L3	W8	W9	2.0
6 Ron Erickson	1767	W10	D1	L3	1.5
7 Lyle Petersen	1461	L2	D9	X10	1.5
3 Nick Pazderic	1650	W9	L5	L4	1.0
9 Romie Carpenter	1938	L8	D7	L5	0.5
10 Richard Gray	1466	L6	L4	F7	0

Erickson-Shughart DUTCH 1 Nf3 f5 2 b3 d6 3 d4 Nf6 4 e3 Nc6 5 c4 Bd7 6 Bb2 e5 7 dxe5 dxe5 8 a3 Qe7 9 Be2 g6 10 Be2 g6 11 0-0 e4 12 Nd2 Ne5 13 Qc2 h5 14 Nd5 Nxd5 15 cxd5 h4 16 Nc4 h3 17 g3 B- b5+ 18 d6 cxd6 19 Nxd6 Qxd6 20 Bxb5+ Ke7 21 Bx e5 Qxe5 22 Qc4 Rac8 23 Qb4+ Qc5 24 Rad1 Bc3 25 Rd7+ Kf6 26 Qxc5 Rxc5 27 Rxb7 Rhc8 28 Bc4 R8c7 29 Rb8 Rd7 30 Rh8 g5 31 Rxh3 Kg6 32 Rh4 (touch move) gxh4 33 gxh4 Rh7 34 Kh8 Rxh4 35 Rgl+ Kf6 36 Rg8 Rc7 37 Rf8+ Kg7 38 Rg8+ Kh7 39 Rg5 Be5 40 Rxf5 Rxh2+ 41 Kgl Bd6 42 Bd5 Rcl++ 0-1

Carpenter-Gluick FRENCH 1 e4 e6 2 d4 d5 3 Nd2 Nf6 4 e5 Nfd7 5 Bd3 c5 6 c3 Nc6 7 Ne2 cxd4 8 cx d4 NB5 9 Bb1 Nb6 10 a3 Nc6 11 0-0 Bd7 12 Nf3 Be7 13 Re1 h6 14 Nf4 Qc7 15 Nb5 Bf8 16 Bf4 0-0-0 17 Bd3 Kb8 18 Rc1 Rc8 19 b4 Qd8 20 Re2 Ne7 21 R2c2 Rxc2 22 Qxc2 Qc8 23 Qb1 Qe8 24 Nd2 Bb5 25 Bxb5 Qxb5 26 Rc5 Qd7 27 Bg3 Nf5 28 RC3 Nxd4 29 Qd3 Qa5 30 Ne4 Bxb4 31 Nc5 Bx c5 32 Rxc5 Nb3 33 Rc3 Rc8 34 Nxc7 Rxc3 35 Rxc3 35 Qxc3 Qxa3 36 Bh4 Nc4 37 h3 Qc1+ 38 Qx c1 Nxc1 39 Kf1 Nxe5 40 Bf6 Ned3 41 Ne8 b5 42 Nd3 b4 43 Nxf7 b3 White Resigns. 0-1

\*\*\*\*\*g\*\*\*\*\*

PRESORTED  
FIRST CLASS

90000000 1913 9010  
Thad Suits  
3601 1st Ave. N.  
Great Falls MT 59401

#####  
# Billings, Montana 59106  
# 4245 Palisades Park Dr.  
# Editor, Secretary/Treasurer  
# William M. Lynch  
#####  
# Membership = \$6 per year.  
# by Education & Competition  
# Promoting Chess Excellence  
# U.S. CHESS FEDERATION  
# an affiliate of the  
# MONTANA CHESS ASSOCIATION  
# published by the  
# MONTANA CHESS NEWS  
#####

