

MONTANA CHESS NEWS

JAN. - FEB. - MAR., 1989

VOLUME XIV - ISSUE 1

STEVE SMITH WINS BILLINGS 30/30

JON LENCHNER SWEEPS TURKEY OPEN

MARCH 11, 1989: SOUTHEAST SUDDEN DEATH OPEN ### Conference Room, MPC Administration Bldg. Colstrip, MT 59323. From Montana 39, turn east on Willow St., and then right to building at gate to power plant. 5 Round Swiss: 10:00am, 12:30pm, 2:00pm, 3:30pm, 5:00pm. Game / 30 minutes. USCF & MCA/Other state membership required. Entry fee = \$10 advance (Masters free), \$15 at site 8:30-9:30am. Prizes: 1st - \$100 + Trophy; Trophies - Top C, D, E, UNR, Upset. Sponsor - Montana Chess Association / Les Brennan, P.O. Box 2404, Colstrip, MT 59323. 406-748-2154.

APRIL 8-9, 1989: CROCUS OPEN ### CHICO HOT SPRINGS LODGE, Pray, MT 59065. 30 Miles south of Livingston off highway US 89. 4 Round Swiss: 9:30am, 1:30pm; 9:30am, 1:30pm. 40 moves / 2 hours, 20 moves / hour. USCF & MCA/Other state membership required. Entry fee = \$10 advance (Masters free), \$15 at site 8:00-9:00am April 8. Prizes: 1st - Trophy + \$100; Trophies - B, C, D, UNR, Upset. *** Chico Hot Springs is a rustic resort with unique character featuring outdoor warm and hot pools, hot tubs, riding horses / X country skis in season, and one of Montana's finest restaurants (no Saturday night round!), EARLY RESERVATIONS are recommended (406-333-4933), rooms \$32-49, Cabins, Chalets sleep 6-10 for \$110-\$140. *** Sponsor - Montana Chess Association / Les Brennan, P.O. Box 2404 Colstrip, MT 59323. 406-748-2154.

MAY 6-7, 1989: 54TH MONTANA OPEN ### City Center Motel, 507 W. Main, Bozeman, MT 59715. (406-587-3158). 5 Round Swiss: 9:30am, 2:00pm, 7:00pm; 9:00am, 2:00pm. 40 moves / 2 hrs, 20 moves / hour. USCF & MCA/Other state membership required. Entry fee = \$18 advance, \$20 8:00-9:00am at site May 6. Prizes: Trophies - 1st, 2nd, 3rd, Top Sr., Top Jr; Class awards. Sponsor - Montana Chess Association / Bill Lynch, 4245 Palisades Park Dr., Billings, MT 59106. 406-652-2063. ### Montana Chess Association annual business meeting, 9:00-9:30am, May 6. ### Top three Montana finishers qualify for State Closed Championship Playoff.

JUNE 10-11, 1989: BILLINGS OPEN ### Conference Room, Plaza Office Building, 1629 Avenue D, Billings, MT 59102. 5 Round Swiss: 9:30am, 2:00pm, 7:00pm; 9:00am, 2:00pm. 45 moves / 2 hours, 25 moves / hour. USCF & MCA/Other state membership required. Entry fee = \$10 advance, \$12 at site 8:00-9:00am June 10. Prizes: \$\$ per entries. Sponsor - Montana Chess Association / Bill Lynch, 4245 Palisades Park Dr., Billings, MT 59106. 406-652-2063.

Another Great Chess Friend, Otto Grosse, of Great Falls, died on January 25, 1989. Otto was instrumental in the process by which the Montana Chess Association made the transition to rated tournaments and affiliation with the USCF, by way of becoming one of the first directors of rated events around 1973. The peak of his playing career was about the same time as he captured clear second at the 1974 Montana Open in Glendive. Dennis Petrak reports that Otto had recently retired from teaching and had been traveling the world extensively as well as teaching German voluntarily in the Grade Schools. Otto spoke several languages and was living his dream of seeing the world. He is survived by his wife, Tillie Grosse, 3401 4th Ave. N., Great Falls, Mt 59401.

P1 Name	Rate	RD1	RD2	RD3	RD4	TOT
1 Steve Smith	2134	½BY W4	W2	W8		3.5
2 John Thompson	2200	W7	W5	L1	W4	3.0
3 Les Brennan	1737	L6	W10	W8	W5	3.0
4 Chad Robinson	1728	W10	L1	W7	L2	2.0
5 Steve Scarff	1587	W9	L2	W6	L3	2.0
6 John Kennedy	1334	W3	L8	L5	W9	2.0
7 Lyle Petersen	1446	L2	W9	L4	W10	2.0
8 Bill Lynch	1886	½BY W6	L3	L1		1.5
9 Charles Williams	NON	L5	L7	W10	L6	1.0
10 Richard Suko	1002	L4	L3	L9	L7	0

The unusual format, 30 moves/30 minutes followed by game/30, posed no problems to Steve Smith who cruised to first place in spite of a late arrival. Steve Scarff, John Kennedy and Lyle Petersen shared the under 1700 honors with identical 2-2's.

RD1 BD2 Kennedy-Brennan K.I.A Les lets John nab a point. 1 e4 e5 2 Nc3 Nf6 3 g3 Bc5 4 Bg2 a6 5 Nge2 Nc6 6 0-0 d6 7 h3 Be6 8 d3 Qd7 9 Kh2 h6 10 f4 exf4 11 Nxf4 0-0-0 12 Nxe6 fxe6 13 Ne2 e5 14 h4 Ng4+ 15 Kh1 Nf3+ 16 Kh2 Rf8 17 Rxf2 Rxf2 18 Ng1 R8f8 19 Kh1 Kb8 20 Nh3 Rf7 21 Bd2 Nd4 22 b4 Ba7

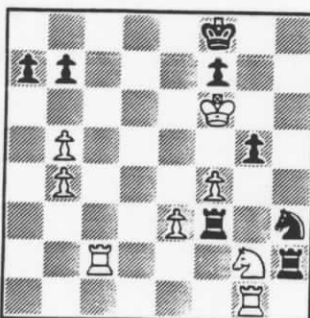
23 Be3 Ne6 24 Bxa7+ Kxa7 25 Qg1+ b6 26 a4 c5 27 bxc5 dxc5 28 a5 b5 29 c3 Qxd3 30 Kh2 Qe4 31 Qd4 Rd8 32 Qh5 R7d7 33 Qxe5 Rd2 34 Nf4 Rxc2+ 35 NXg2 Rd2 36 Qf5 Nd8 37 Qc8 Qxc3 38 Qc7+ Nb7 39 Qb6+ Kb8 40 Rf1 Kc8 41 Qe6+ Kb8 42 Rf8+ Rd8 43 Rxd8+ Nxd8 44 Qd6+ Kc8 45 Qa6 Kd8 46 Qxb5+ Nc6 47 a6 Kd6 48 Qb6 Black Resigns. 1-0

MAR-DIEMER GAMBIT DECLINED 1 d4 Nf6 2 Nc3 d5 3 e4 dxe4 4 f3 e3 5 Bxe3 Bf5 6 Bc4 e6 7 Ng e2 Bd6 8 Qd2 Nc6 9 Bb5 0-0 10 Bxc6 bxc6 11 0-0 Nd5 12 Bg5 f6 13 Bh4 Qe8 14 Ne4 Rb8 15 c4 Nb4 16 a3 Na6 17 Qa5 Bxe4 18 fxe4 Rxb2 19 QXa6 Rxe2 20 c5 Rxe4 21 cxd6 Rxh4 22 dxc7 Rxd4 23 Rab1 Qd7 24 Rb7 Rd1 25 Rxa7 Qd4+ 26 White Resigns. 0-1

FRENCH 1 e4 e6 2 d4 d5 3 exd5 exd5 4 Bd3 Nf6 5 Nf3 Bg4 6 0-0 Be7 7 Re1 0-0 8 c3 c5 9 Nb d2 cxd4 10 cxd4 Nc6 11 Qb3 QC7 12 Ne5 Be6 13 Ndf3 Nb4 14 Bd2 Nxd3 15 Qxd3 Qb6 16 a3 Bd6 17 Bg5 Ne4 18 Be3 Rac8 19 b4 Rc7 20 Rcl Rfc8 21 Rxc7 Rxc7 22 Rcl f6 23 h3 fxe5 24 dxe5 Rxc1+ 25 Bxc1 Qxf2+ 26 Kh1 Bxh3 27 Nh4 Qe1+ 28 Kh2 QXc1 29 Qxd5+ Kf8 30 Qxe4 Be6 31 Nf3 Qh6+ 32 Kg1 Be7 33 Qxb7 Qe3+ 34 Kh2 Qxa3 35 Qe4 g6 36 Qf4+ Kg7 37 Nd4 Qa2 38 b5 Bd5 39 N f3 QC4 40 Nd4 Kg8 41 e6 Bxe6 42 Qb8+ Kf7 43 Qxa7 Kf6 44 QA1 Bd6+ 45 g3 Be5 46 Qa7 Bxd4 47 b6 Qe2+ 48 White Resigns. 0-1

upset favor from Round 1. 1 e4 c6 2 d4 d5 3 exd5 cxd5 4 Bd3 Nf6 5 Bf4 Nc6 6 c3 d6 7 Nd2 Bd6 8 Bxd6 Qxd6 9 Nf3 0-0 10 h3 Re1 11 0-0 e5 12 dxe5 Nxe5 13 Nxe5 Rxe5 14 Qf3 Bd7 15 Ra e1 Rae8 16 Qg3 Qe7 17 Nf3 Rxe1 18 Rxe1 Be6 19 Nd4 Qd7 20 Nxe6 fxe6 21 Qe5 Kf7 22 Re3 Qc6 23 Rf3 h6 24 Qh5+ Ke7 25 Qg6 Rg8 26 Rxf6 gxf6 27 Qxg8 Kd6 28 Qf8+ Ke5 29 Qxh6 Qc5 30 Qh5+ Kd6 31 Qg6 Black Resigns. 1-0

occasionally overlook a Knight Fork. 1 e4 d5 2 exd5 Qxd5 3 Nc3 Qd6 4 d4 Nf6 5 Bc4 Bg4 6 Nf3 Nc6 7 Be3 e6 8 0-0 0-0-0 9 Nb5 Qb4 10 Qd3 Bxf3 11 gxf3 Ne5 12 Qb3 Nxc4 13 Nxa7+ K b8 14 Nb5 Qxb3 15 axb3 Nxe3 16 fxe3 c6 17 Nc3 Bd6 18 Ra5 Bb4 19 White Resigns. 0-1



After 46 Kf6

RD4 BD3 Scarff-Brennan QUEEN PAWN "Necessity is the Mother of invention." Thus Les finds his odd looking 46th move to prevent mate. 1 d4 d5 2 Nf3 Nf6 3 e3 Bf5 4 Nbd2 h6 5 c4 e6 6 cxd5 exd5 7 Bb5+ c6 8 Be2 Nbd7 9 0-0 Bd6 10 Qb3 Qc7 11 Re1 0-0 12 Bd3 Ne4 13 g6 Ndf6 14 Nh4 Nxd2 15 Bxd2 Bxd3 16 Qxd3 Ne4 17 Bcl Ng5 18 f4 Ne4 19 Nf5 Bb4 20 Re2 Qd7 21 Nh4 Qg4 22 a3 Be7 23 Ng2 h5 24 Rc2 h4 25 Qf1 hxg3 26 hxg3 Nxc3 27 Qf2 Qh3 28 QF3 g6 29 Bd2 Kg7 30 Re1 Rh8 31 Kf2 Ne4+ 32 Ke2 Qxf3+ 33 Kxf3 Rh3+ 34 He2 Rg3 35 Rg1 Rh8 36 Bel Rgh3 37 Kd3 Kf8 38 b4 g5 39 b5 c5 40 dxc5 Bxc5 41 Bb4 Bxb4 42 axb4 Rf3 43 Kd4 Rh2 44 Kxd5 Nf2 45 Ke5 Nh3 46 Kf6 DIAGRAM Rxe3! 47 Nxe3 Rxc2 48 Nxc2 Nxg1 49 fxg5 Nf3 50 Ne3 Nd4 51 Nf5 Nxf5 52 Kxf5 Kg7 53 Ke5 Kg6 54 v f4 a6 55 b6 f6 56 gxf6 Kxf6 and White, who until the 46th had five

minutes advantage, lost on time after a few more moves. 0-1

CENTER COUNTER 1 e4 d5 2 exd5 Nf6 3 c4 c6 4 dxc6 Nxc6 5 Nf3 e5 6 d3 Bb4+ 7 Bd2 Qa5 8 N c3 Bf5 9 a3 Bxc3 10 Bxc3 Qc5 11 b4 Qd6 12 Be2 0-0-0 13 b5 Nd4 14 Nxd4 exd4 15 Bb4 Qf4 16 0-0 h5 17 g3 Qg5 18 h4 Qg6 19 Rcl Ng4 20 QD2 Ne5 21 Rfd1 Bxd3 22 Bxd3 Nf3+ 23 Kh1 Black Resigns. 1-0

Games selected and notes by Bill Lynch.

P1 Name	Rate	RD1	RD2	RD3	RD4	RD5	TOT
1 Jon Lenchner	2245	W12	W10	W3	W8	W4	5.0
2 Les Brennan	1724	W9	L3	W23	W13	W8	4.0
3 John Carr	1833	W17	W2	L1	W5	D6	3.5
4 Dave Shughart	1829	W22	D5	W11	W6	L1	3.5
5 Dan Britt	1618	W24	D4	W7	L3	W13	3.5
6 Dan McCourt	1802	W16	W14	W19	L4	D4	3.5
7 Ted Catton	1778	D20	W15	L5	W10	W12	3.5
8 Ron Deike	2138	W18	W11	W14	L1	L2	3.0
9 Tom Gluick	1411	L2	W17	L10	W22	W16	3.0
10 Bob Phillips	1723	W21	L1	W9	L7	D11	2.5
11 Doug Block	1421	W13	L8	L4	W14	D10	2.5
12 Murray Strong	1600	L1	D21	W15	W20	L7	2.5
13 Arman Goplen	1725	L11	W20	W22	L2	L5	2.0
14 Dennis Petrak	1655	W23	L6	L8	L11	W20	2.0
15 Albert French	1518	L19	L7	L12	W21	W23	2.0
16 Richard Gray	1482	L6	L23	W24	W17	L9	2.0
17 Sherwood Moore	1515	L3	L9	W21	L16	W24	2.0
18 Nick Pazderic	1543	L8	L19	L20	W23	W22	2.0
19 Mike Jensen	2039	W15	W18	L6	WD	WD	2.0
20 Lyle Petersen	1446	D7	L13	W18	L12	L14	1.5
21 M. Szulczynski	1324	L10	D12	L17	L15	BYE	1.5
22 John Barto	1488	L4	W24	L13	L9	L18	1.0
23 John Kennedy	1312	L14	W16	L2	L18	L15	1.0
24 Jason Miller	1244	L5	L22	L16	BYE	L17	1.0

boards 4, 5, 7 and 8 -- all within a few minutes. In fact time trouble was such an obvious characteristic of this year's Turkey Open, it might be helpful to review several of the more important rules:

- "The game is lost by the player who has not completed the prescribed number of moves in the allotted time." (USCF rule I.12.L) And, by implication one's opponent must make a "claim". Saying "time" or "flag" is a traditional way of doing so. The point to remember is that making the time control means one has unexpired time on one's clock.
- "In the course of play each player is required to record the game ... move after move ..." (USCF rule I.13.A)
- "If a player has less than 5 minutes on his clock until the time control, he is not obliged to meet the requirements of I.13.A Upon making the time control the player must immediately complete his record of the game by filling in the omitted moves." (USCF rule I.13.B)
- additional rules in section I.13 are concerned with filling in the omitted moves, i.e. using one's opponent's score sheet, but without inconveniencing that person; doing so with one's own clock running; reconstructing the game on another board, if necessary; and making a diagram of the position reached at the time control in the event that the score sheets cannot be filled out.
- since one's opponent may not accept the claim of time forfeit, and since one may not be made to forfeit on the basis of one's own scoresheet, each player must keep their own reasonably accurate score sheet. The details, definitions and penalties associated with this point are covered in USCF rule I.12.L.4

Rather than losing a game through ignorance of some point and rather than failing to win one because an opponent's actions are clearly covered by the rules, players are advised to learn the rules for themselves. It sure makes the T. D.'s job that much easier.

Remember, while there may be no formal award for the most accurate and most legible score sheets, they can be worth more than one point over the course of your chess career.

Report by Bill McBroom

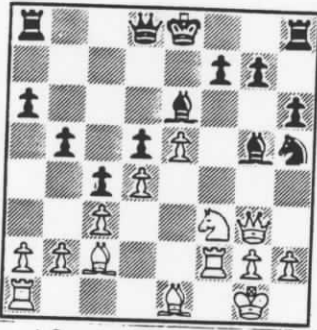
See games on Page 4

USCF Master Jonathan Lenchner, originally from New York and recently relocated to Missoula from California, won the Turkey Open with a perfect score of 5. Colstrip's Les Brennan claimed the second spot with 4 points by coming out on top of a 5th round time scramble. Since Les' opponent was an expert (from Utah), Les also took the plaque for the biggest upset. The rating point difference of 414 took the trophy away from Doug Block of Washington whose first round upset of 304 points had held up until the very last.

There were a good number of scores of 3½ points, but only that of Dan Britt was good enough to claim any prize. He earned the \$30 for the beat under 1700. Tom Gluick of Missoula had a score of 3 points and that was all he needed for a good tournament and for the best score among those under 1500.

There were time scrambles aplenty. With several minutes to go in the first time control of the 4th round many players found themselves in time trouble. In that round flags fell on

RD1 BD1 Lenchner-Strong QUEEN PAWN 1 d4 d5 2 Nf3 e6 3 e3 Nf6 4 Nbd2 Bd6 5 Bd3 0-0 6 0-0 h6 7 Re1 b6 8 e4 dxe4 9 Nxe4 Bb7 10 Nxd6 Qxd6 11 Qe2 Nbd7 12 c3 Qd5 13 c4 Qd6 14 Bd2 Rfe8 15 Bc3 c5 16 Rad1 Kh8 17 Ne5 Nxe5 18 dxe5 Qc6 19 f3 Nd7 20 Qf2 Rad8 21 Qh4 Nf8 22 B e4 Rxd1 23 Bxc6 Rxe1+ 24 Qxe1 Bxc6 25 Qd2 Rc8 26 Qd6 Kg8 27 a3 a5 28 f4 g6 29 g4 Kg7 30 f5 Be4 31 f6+ Kg8 32 Qxb6 Nd7 33 Qxa5 Bf3 34 h3 Be4 35 Qa6 Rb8 36 Qd6 Rb7 37 b4 cxb4 38 axb4 Ra7 39 c5 Nxc5 40 Qd8+ Kh7 41 Qf8 Nd3 42 Qg7++ 1-0



After 22...N-R4

KINGPAWN 1 P-K4 P-K3 2 P-Q4 P-Q3 3 B-Q3 B-K2 4 P-KB4 N-Q2 5 N-KB3 P-QB4 6 P-QB3 N-KB3 7 0-0 P-KR3 8 B-Q2 P-QR3 9 B-K1 N-KB1 10 QN-Q2 P-QN4 11 Q-K2 B-N2 12 P-K5 N/B3-KR2 13 B-K4 P-Q4 14 B-B2 P-QB5 15 P-KB5 PxP 16 BxP B-B1 17 B-B2 B-K3 18 Q-KB2 N-N3 19 Q-N3 N-N4 20 Nx N BxN 21 N-B3 N-B5 22 R-KB2 N-R4 23 NxB NxQ 24 NxB PxN 25 B-N6+K-Q2 26 R-B7+K-B1 27 BxN R-B1 28 B-R4 QxB 29 RxB K-N2 30 R-B7 K-N3 31 Rx P Q-N4 32 R-KB1 Q-K6+ 33 K-R1 R-R2 34 B-B7 Drawn. 1/2-1/2

RD1 BD7 Catton-Petersen

Phillips-Lenchner MODERN DEFENSE 1 e4 d6 2 d4 Nf6 3 Nc3 g6 4 f4 B g7 5 Be2 0-0 6 Be3 c5 7 g4 cxd4 8 Bxd4 Nc6 9 Be3 Qa5 10 Qd2 Bxg4 11 Nf3 e5 12 f5 d5 13 exd5 Rad8 14 Rg1 Bxf5 15 Bg5 Nb4 16 Rc1 Nxd5 17 Bc4 Nf4 18 Qe3 Ng4 19 Rxg4 Bxg4 20 Bxd8 Ng2+ 21 Kf2 Nxe3 22 Bxa5 Nx c4 23 Bb4 Rd8 24 b3 Nd2 25 Nfg5 h6 26 Nge4 Nxe4 27 Nxe4 Rd4 White Resigns. 0-1

RD2 BD1

RD2 BD10 Gluick-Moore ENGLISH 1 c4 Nf6 2 Nc3 e6 3 e4 Bb4 4 e5 Ng8 5 Ne4 Nc6 6 Nf3 b6 7 a3 d5 8 exd6 e.p. Bxd6 9 Qa4 Bb7 10 b4 Nf6 11 Nxd6+ cxd6 12 Nd4 Qc7 13 Bb2 e5 14 Nxc6 Bx c6 15 b5 Bb7 16 d4 Nd7 17 Qc2 0-0 18 f3 Rfe8 19 dxe4 Nxe4 20 Bxe4 Rxe4 21 Be2 Rae8 22 0-0 Rxe2 23 Qd3 Qe7 24 Rad1 Qg5 25 g3 Qc5+ 26 Kh1 R2e3 27 Qxd6 Qxc4 28 Qd7 Bxf3 29 Rxf3 R3e7 30 Qxe7 Rf8 31 Rd8 Qc1+ 32 Kg2 h6 33 Rxf8+ Kh7 34 Qe4+ Resigns. 1-0

RD3 BD2

Jensen-McCourt ENGLISH-DUTCH 1 c4 f5 2 g3 Nf6 3 Bg2 e5 4 Nc3 c6 5 d4 e4 6 d5 Bd6 7 dx c6 dxc6 8 Bf4 Bxf4 9 Qxd8 Kxd8 10 gxf4 Be6 11 b3 Kc7 12e3 Na6 13 f3 Nb4 14 fxe4 Nc2+ 15 Kd1 Nxe3+ 16 Ke2 Nxc2 17 Kf3 Nh4+ 18 Kg3 NG6 19 e5 Nh5+ 20 Kf3 N5xf4 21 h4 Nd3 White Resigns. 0-1

RD3 BD1 Lenchner-Carr

FRENCH 1 e4 e6 2 d4 d5 3 Nd2 Nf6 4 e5 Nfd7 5 B d3 c5 6 c3 Nc6 7 Ne2 Be7 8 0-0 Qb6 9 Nf3 0-0 10 Re1 cxd4 11 cxd4 f6 12 Nf4 Nb4 13 Bb1 fx e5 14 dxe5 Bc5 15 Qe2 Nb8 16 Ng5 g6 17 Nnh7 Bxf2+ 18 Kh1 Rxf4 19 Bxf4 Bxe1 20 Qg4 Qc7 21 Qxg6+ Kh8 22 Qe8++ 1-0

RD3 BD5 Petrak-Deike

DUNST 1 Nc3 d5 2 e4 e6 3 exd5 exd5 4 cxb5 13 Bxb5 Qa5 14 Qxa5 Rxa5 15 Bd3 Bxd4 16 Bxh7+ Kxh7 17 Rxd4 Nc6 18 Rh4+ Kg8 19 Nf3 B e6 20 Nd4 Nxd4 21 Rxd4 Rb8 22 Ka1 Kf8 23 Rd2 Rc5 24 a3 Rbc8 25 Re1 Rc4 26 Kbl f6 27 Rf1 g5 28 c3 Bf7 29 Ka1 Kg7 30 g3 Re4 31 Rd4 Rxd4 32 cxd4 Rc4 33 f4 Rxd4 34 fxc5 fxc5 35 Rh1 Kg6 36 Kbl Be8 37 Kc2 Bb5 38 Rd1 Rxd1 39 Kxd1 Kf6 40 Kd2 Bf1 41 Kc3 Bxh3 42 Resigns. 0-1

RD5 BD1 Lenchner-Shughart

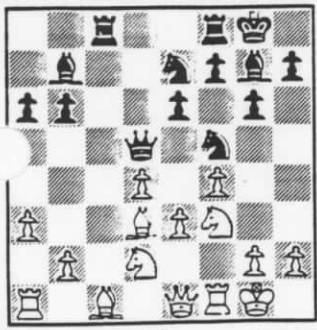
KING'S INDIAN ATTACK 1 Nf3 d5 2 g3 Nf6 3 Bg2 e6 4 0-0 Bd6 5 d3 0-0 6 Nbd2 Nc6 7 e4 d4 8 Nc4 e5 9 c3 dxc3 10 bxc3 Be6 11 Qa4 Bxc4 12 Qxc4 Na5 13 Qa4 c5 14 Nh4 Nc6 15 Ba3 a6 16 Nf5 b5 17 Qc2 a5 18 f4 b4 19 Qa4 Rc8 20 Bb2 exf4 21 gxf4 Bb8 22 Rad1 Ba7 23 e5 bxc3 24 exf6 cx b2 25 fxc7 Re8 26 Bxc6 Rxc6 27 Qxc6 Re6 28 Qb7 Bb6 29 Rfel c4+ 30 Kh8 c3 31 Rxe6 bl=Q 32 Nh6+ Black Resigns. (Mate in two - An extra Queen doesn't always win!) 1-0

RD5 BD3

Deike-Brennan ENGLISH 1 c4 e5 2 g3 Nf6 3 Bg2 g6 4 Nc3 Bg7 5 e4 d6 6 Nge2 Nbd7 7 0-0 0-0 8 d3 Nc5 9 f4 exf4 10 gxf4 c6 11 d4 Na6 12 f5 Re8 13 Ng3 Kh8 14 Be3 Ng8 15 Qd2 h6 16 Rf2 g5 17 Nh5 Nf6 18 Nxc7 Kxc7 19 Bxc5 hxc5 20 Qxc5+ Kh8 21 Qh4+ Nh7 22 f6 Rg8 23 Kh1 R g4 24 Qh5 Qg8 25 e5 Rg5 26 Qh4 Qg6 27 Be4 Bf5 28 Bxf5 Rxf5 29 Rg2 Rh5 30 Rxc6 Rxc6 31 R g7 Rad4 32 exd6 Nxf6 33 Rxf7 Rxd6 34 Rxb7 Nc5 35 Rf7 Kg8 36 Rc7 Kh8 37 Rf1 Ncd7 38 b4 R d3 39 Na4 a6 40 Nc5 Rb8 and White's flag had fallen. 0-1

Bill McBroom.

Games selected by director



After 17 Nbd2

RD4 BD1 Erickson-McBroom BIRD'S A key game for Bill's win at the Chinook. 1 f4 c5 2 Nf3 g6 3 e3 Bg7 4 c4 Nc6 5 Nc3 e6 6 Be2 Nge7 7 0-0 0-0 8 Ne4 d5 9 Nxc5 b6 10 Nb3 dxc4 11 Bxc4 Nf5 12 a3 Bb7 13 Q e1 a6 14 d4 Rc8 15 Be2 Nce7 16 Bd3 Qd5 17 Nbd2 DIAGRAM Bxd4?! 18 Bxf5 Nxf5 19 exd4 Nxd4 20 Nxd4?? Qxg2++ 0-1 White over-reacted to Black's initial threat, then over-looked the Mate. After 18 exd4 Nx d4 19 Be4! it is difficult to see how Black can justify the sack - B. Lynch.

RD4 BD2 Petrak-Scarff DUNST Dennis has a chance to win the Chinook Open! 1 Nc3 c5 2 Nf3 e6 3 e4 a6 4 Ne2 g6 5 d4 cxd4 6 N2xd4 Bg7 7 c3 d6 8 Bd3 Qc7 9 0-0 Nf6 10 Re1 0-0 11 Be3 Bd7 12 R c1 Nc6 13 h3 Rac8 14 Qd2 Nxd4 15 cxd4 Bc6 16 Bh6 Qe7 17 Bg5 e5 18 dxe5 dxe5 19 Qe3 Rfd8 20 Bb1 Rd7 21 Nd2 Qb4 22 Nc4 Re8 23 a3 Qe7 24 Na5 Bb5 25 Nc4 Re8 26 Nd2 R8d8 27 Nf3 R4e6 28 b3 Bd3 29 Qc5 b6 30 Qx35 Re6 31 Qc7 Rd7 32 Qc8+ BF8 33 e5 Rd8 34 Qc3 Bxb1 35 Bxf6 Rxf6 36 exf6 Qxa3 37 Rxb1 Bb4 38 QC7 Rf8 39 Red1 b5 40 Nd4 Ba5 41 Qc1 Resigns. 1-0

RD5 BD1 McBroom-Strong RETI Bill outplays newcomer "Strong" Murray Strong for First Place. 1 Nf3 d5 2 c4 d4 3 e3 dxe3 4 fxe3 Nf6 5 Nc3 e6 6 Be2 b6 7 0-0 Bb7 8 b4 Bd6 9 d4 c5 10 bxc5 bxc5 11 Rb1 Bc6 12 Kh1 0-0 13 dxc5 Bxc5 14 Qxd8 Rxd8 15 Ne5 Bd6 16 Nxc6 Nxc6 17 Bf3 Rdc8 18 Bd2 Rab8 19 Nb5 Bf8 20 a4 a6 21 Bxc6 Rxc6 22 Nd4 Rxb1 23 Rxb1 Rxc4 24 a5 Nd5 25 g3 h6 26 Rb8 g6 27 Nf3 f6 28 e4 Rxe4 29 Bxh6 Re2 30 Bxf8 Rd2 31 Nd4 Kf7 32 Bh6 Rxa5 33 Rb7+ Ne7 34 Nc6 Ra1+ 35 Kg2 Rc1 36 Rx e7+ Black Resigns. 1-0

RD5 BD2 Erickson-Petrak BIRD'S Ron outplays Dennis for second place. 1 f4 b6 2 Nf3 Bb7 3 e3 Nf6 4 b3 d6 5 Bb2 Nbd7 6 c4 e6 7 Nc3 a6 8 Bd3 h6 9 Q e2 Qe7 10 Bc2 d5 11 Rc1 Qd6 12 cxd5 Nxd5 13 Ne4 Qe7 14 Bb1 Qd8 15 Ng3 N7f6 16 Ne5 Qe7 17 f5 Rg8 18 fxe6 Qxe6 19 Bf5 Qe7 20 0-0 g6 21 Be4 0-0-0 22 Bxd5 Rxd5 23 Nc6 Bxc6 24 Rx c6 Ne8 25 Qxa6+ Kb8 26 Bd5 Ra5 27 Rxb6+ cxb6 28 Qxb6+ Qb7 29 Qxa5 f5 30 Qd8+ Qc8 31 Qx c8+ Kxc8 32 Rc1+ Kb7 33 Ne2 Nc7 34 Be5 Ne6 35 Nd4 Nc5 36 Rc2 Be7 37 b4 Na6 38 a3 Rc8 39 Rxc8 Kxc8 40 Kf2 Bxb4 41 axb4 Nxb4 42 Ke2 Kd7 43 h4 h5 44 Nf3 Ke6 45 Bc3 Nd5 46 Kd3 f4 47 e4 Ne7 48 Ng5+ Kd6 49 Kc4 Ng8 50 e5+ Kc6 51 e6 Ne7 52 Be5 Nf5 53 Bxf4 Nxb4 54 g3 Nf5 55 d4 h4 56 d5+ Black Resigns. 1-0 Games selection and notes by Dennis Petrak.

GAMES FROM THE ENNIS OPEN SEPTEMBER 17-18, 1988

RD1 BD1 Smith-McBroom SICILIAN Steve starts the tournament with a fine attack. 1 e4 c5 2 Nc3 Nc6 3 f4 g6 4 Nf3 Bg7 5 g3 d6 6 Bg2 Nf6 7 d3 a6 8 0-0 0-0 9 h3 e6 10 Be3 b6 11 Qe1 Ra7 12 g4 Ne7 13 Qh4 Kh8 14 Rf2 Nfg8 15 f5 exf5 16 gxf5 gxf5 17 Ng5 Nf6 18 Raf1 Ng6 19 Q g3 Nh5 20 Qf3 Nf6 21 exf5 Nc5 22 Qg3 Bh6 23 Qh4 Ng8 24 f6 Ng6 25 Qh5 Bb7 26 Bxb7 Rxb7 27 Nd5 Bxg5 28 Bxg5 Re8 29 Bh6 Nxb6 30 Qxh6 Rg8 31 Rg2 Qf8 32 Qh5 Qe8 33 Rf5 Qe1+ 34 Rh2 Q h4 35 Rxh7+ Black Resigns. 1-0

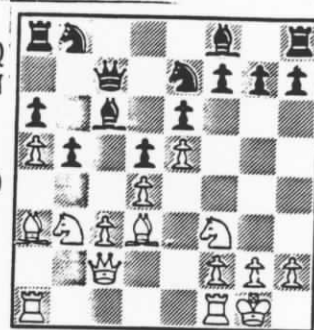
RD1 BD2 Petrak-Joelson DUNST Dan J. has an eye for the attack too! 1 Nc3 c5 2 Nf3 Nc6 3 Ne4 e5 4 Ng3 d5 5 e4 Nf6 6 exd5 Qxd5 7 d3 Be7 8 c4 Qd8 9 Be2 0-0 10 0-0 Ne8 11 Ne4 f5 12 Nc3 Nc7 13 Ne1 g5 14 Nc2 Be6 15 Bf3 Qd7 16 b3 Nd8 17 Ne3 Rf7 18 Bb2 g4 19 Bd5 Bg5 20 Bxe6 Ndx6 21 Ncd5 Bxe3 22 fxe3 Nxd5 23 cxd5 Qxd5 24 Qe2 h5 25 Rad1 f4 26 exf4 Nxf4 27 Qe4 Qxe4 28 dxe4 Raf8 29 g3 Nh6+ 30 Kg2 Rf2+ White Resigns. 0-1

RD2 BD1 Erickson-Smith FROM'S GAMBIT Ron finds that Steve always likes a good gambit. 1 f4 e5 2 fxe5 d6 3 exd6 Bxd6 4 Nf3 g5 5 d4 g4 6 Ng5 f5 7 e4 h6 8 e5 Be7 9 Nh3 gxh3 10 Qh5+ Rf8 11 Bc4 Rh7 12 c3 Bg5 13 Nd2 Ne7 14 Qxh3 Nd5 15 Qf3 Be6 16 b3 Rf7 17 Ba3+ Kg7 18 0-0-0 c6 19 Kb2 b5 20 Bd3 a5 21 Bd6 a4 22 b4 a3+ 23 Kc2 Ne3+ 24 Kb1 Nxd1 25 Rxd1 Bxd2 26 Rxd2 BD5 27 Qe2 Qd7 28 Qh5 Be4 29 Qh4 Qe6 30 Kc1 Bxd3 31 Qg3+ Kh8 32 Qx d3 Nd7 33 Qf3 Rc8 34 g3 Nb6 35 Re2 Nd5 36 Rc2 Nb6 37 Re2 Nc4 38 Bc5 Rg8 39 h3 Rfg7 40 R g2 Qd5 41 Qf2 Qe4 42 Rg1 Qe3+ 43 Qxe3 Nxe3 44 e6 Nd5 45 Bd6 Rg6 46 Re1 Re8 White Resigns 0-1

RD2 BD2 Joelson-Matous ENGLISH Dan's 25th debuts the en-passant capture in the Ennis Open. Notice how it keeps cropping up in the following games. 1 c4 Nf6 2 Nc3 c5 3 Nf3 Nc6 4 d4 exd4 5 Nxd4 g6 6 e4 d6 7 Be2 Bg7 8 Be3 0-0 9 0-0 a6 10 f3 Bd7 11 Nb3 Ne5 12 Rac1 b6 13 Qd2 Rac8 14 Nd5 Nxd5 15 cxd5 b5 16 Na5 f5 17 Rxc8 Bxc8 18 f4 Nd7 19 exf5 Rxf5 20 Bg4 Rf8 21 NC6 Qe8 22 Bd4 Bxd4+ 23 Qxd4 Rf6 24 Re1 e5 25 dxe6 e.p. Kg7 26 Qxd6 Nf8 27 Qc7+ Kh6 28 Qe7 Qxe7 29 Nxe7 Bxe6 30 Bxe6 Rxe6 31 Rxe6 Nxe6 32 Nd5 a5 33 Kf2 Nc5 34 Ke3 Kg7 35 Kd4 Ne6+ 36 Ke5 Kf7 37 Kd6 b4 38 Kc6 Nd8+ 39 Kb6 Ke6 40 Ne3 a4 41 Kb5 a3 42 bxa3 bxa3 43 Ka4 Nc6 44 Kxa3 Nd4 Black Resigns. 1-0

More games on page 6

RD2 BD3 Brennan-Jensen FRENCH Les builds a good position for a superior endgame. 1 e4 e6 2 d4 d5 3 e5 Bd7 4 Nf3 a6 5 a4 c5 6 c3 Qa5 7 Nbd2 c4 8 Qc2 b5 9 b4 cxb3 e.p. 10 Nxb3 Qb6 11 a5 Qc7 12 Bd3 Ne7 13 Ba3 Bc6 14 O-O*Ng6 15 Bxg6 hxg6 16 Bxf8 Kxf8 17 Nc5 Qe7 18 Qc1 Nd7 19 Nd3 Rc8 20 Qa3 Bb7 21 QXe7+ Kxe7 22 Rfc1 Rc7 23 Ra3 Rhc8 24 h3 Nb8 25 Nd2 Nd7 26 NF3 Bc6 27 Nb4 Bb7 28 Nd3 Rh8 29 Nd2 Rh5 30 Nb3 f6 31 exf6+ gxf6 32 Nbc5 Nf8 33 Re1 Bc8 34 Nb4 Kd6 35 N5xa6 Bxa6 36 Nxa6 Ra7 37 Nc5 e5 38 a6 e4 39 Rb1 Kc6 40 Ra5 Nd7 41 Raxb5 Rh7 42 Nxd7 Rhxd7 43 Rb6+ Kc7 44 Rxf6 Rg7 45 Rbb6 g5 46 Rbc6+ Black Resigns. 1-0

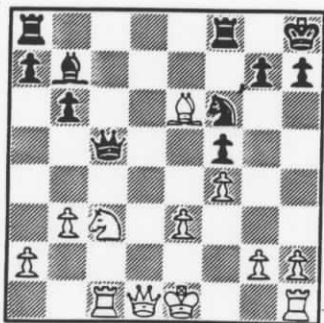


After 14 O-O

RD2 BD4 Peterson-Carpenter MODERN DEFENSE Romie warms up for the State Closed! 1 d4 Nf6 2 c4 g6 3 Nc3 Bg7 4 e4 d6 5 f4 O-O 6 Nf3 Nbd7 7 Be2 e5 8 fxe5 dxe5 9 dxe5 NG4 10 O-O ndxe5 11 Nxe5 Nxe5 12 Bf4 Qe7 13 Qb3 b6 14 Rad1 Be6 15 Nd5 Bxd5 16 exd5 Rae8 17 Qc2 Nd7 18 Bf3 Ne5 19 Bxe5 Qxe5 20 b3 Re7 21 Rfel Qxel+ 22 Rxel Rxel+ 23 Kf2 Rfe8 24 Qd2 Rh1 25 d6 cxd6 26 Qxd6 Be5 27 Qd7 Kf8 28 Bd5 Re7 29 Qc8+ Kg7 30 Qg4 Bd6 31 h3 Bc5+ 32 Kg3 Rf1 33 Kh4 Bf2+ 34 g3 Re5 35 Qd7 Be3 36 Qd8 Rh5+ 37 White Resigns. 0-1

VIENNA GAMBIT Romie transposes - into one of Steve's old favorites as White. 1 e4 Nf6 2 Nc3 e5 3 f4 d5 4 fxe5 Nxe4 5 d3 Nxc3 6 bxc3 c5 7 Nf3 Nc6 8 Be2 Be7 9 O-O O-O 10 Qe1 f6 11 exf6 Bxf6 12 Bd2 Ne7 13 Rb1 Nf5 14 g4 Nh4 15 Qg3 Nxf3+ 16 Bxf3 Bg5 17 Bxg5 Qxg5 18 Rfel White's flag falls. 0-1

RD3 BD2 Shughart-Joelson SICILIAN Dave's game runs out before the clock. 1 e4 c5 2 Nf3 d6 3 d4 cxd4 4 Nxd4 Nf6 5 Nc3 g6 6 Bc4 Bg7 7 O-O O-O 8 Be3 Nc6 9 f3 Bd7 10 Rf2 Rc8 11 Rd2 Ne5 12 Bb5 Bxb5 13 Ndx5 Nc4 14 Nxa7 Nxe3 15 Qe2 Rxc3 16 bxc3 Qb6 17 Qf2 Qxa7 18 Rd3 Bh6 19 h3 Qc5 20 f4 Nxc2 21 Qxc5 dxc5 22 Rac1 Ne3 23 g3 Nc4 24 Rb1 b6 25 e5 Ne4 26 Rd7 Nng3 27 Rxe7 Nf5 28 Rb7 Bxf4 29 Rd1 Bxe5 30 White Resigns. 0-1



After 16...Kh8

RD4 BD1 Joelson-Smith RETI White wins a pawn momentarily, but finds his exposed King makes his whole position vulnerable.

1 c4 c6 2 Nf3 d5 3 e3 e6 4 b3 f5 5 Bb2 Nf6 6 Ne5 Nbd7 7 f4 Nxe5 8 Bxe5 Bd6 9 Bxd6 Qxd6 10 d4 b6 11 Nc3 Bb7 12 Rc1 O-O 13 Be2 dxc4 14 Bxc4 c5 15 dxc5 Qxc5 16 Bxe6+ Kh8 DIAGRAM 17 Nd5 Qa5+ 18 b4 Qxa2 19 Nc7 Qxg2 20 Rf1 Rad8 21 Qe2 Ng4 22 Qxg2 Bxg2 23 Rg1 Be4 24 Bc4 Rf6 25 Ne6 Re8 26 h3 Nxe3 27 Nng7 Rc8 28 Nh5 Rg6 29 White's flag falls. 0-1

RD4 BD2 Motta-Carr QUEEN PAWN Paul builds a good position (with the help of the e.p.), but forgets the clock?! 1 d4 Nf6 2 Nc3 b6 3 e4 Bb7 4 e5 Ng8 5 Nf3 e6 6 Bd3 h6 7 h4 d5 8 exd6 e.p. cxd6 9 Bf4 a6 10 Qe2 d5 11 Ne5 Nf6 12 Rh3 Nbd7 13 Kf1 Nxe5 14 Bxe5 Bd6 15 Re1 Qc7 16 Rg3 Rg8 17 Rf3 Qe7 18 Rg3 Qc7 19 Qf3 Qe7 20

Bxf6 and White's flag falls. 0-1

RD5 BD1 Smith-Carr FRENCH Steve wraps up a clear first. 1 e4 e6 2 d4 d5 3 e5 c5 4 c3 Nc6 5 Nf3 Bd2 6 dxc5 Bxc5 7 Bd3 Nge7 8 O-O Ng6 9 Re1 O-O 10 Nbd2 Be7 11 Nb3 a6 12 Nbd4 Qc7 13 Qe2 Bc5 14 Nxc6 Qxc6 15 h4 f5 16 exf6 e.p. Rxf6 17 Bxg6 hxg6 18 Bg5 Rf5 19 g4 Rxf3 20 Qxf3 Rf8 21 Qg2 Draw Agreed. 1/2-1/2

RD5 BD2 Carpenter-Joelson SICILIAN Smith-Morra - disrespectfully declined. 1 e4 c5 2 d4 cxd4 3 c3 Nf6 4 e5 Nd5 5 Qxd4 e6 6 Bc4 Nc6 7 Qe4 f5 8 exf6 e.p. Nxf6 9 Qe2 d5 10 Bb5 Bd6 11 Nf3 O-O 12 O-O Qc7 13 Re1 Ng4 14 Bxc6 Bxh2+ 15 Kh1 bxc6 16 g3 Bxg3 17 fxg3 Qxg3 18 Rf1 Ba6 19 White Resigns. 0-1

Games selection and notes by Bill Lynch.

Les Brennan has been asking "How can you improve your chess?" Here are some answers:

"Postal chess makes better chess players." - Kip Stubberud (2087)

"My rating jumped about two hundred points after I read LOGICAL CHESS, MOVE BY MOVE. Also, play a lot of postal chess." - Steve Smith, WY (2134)

"The one book that probably helped me the most is MY SYSTEM, by Aron Nimzovich. I read the whole book and played all the moves out on a full size board." - John Thompson (2200)

Montana Chess Association Members				February 23, 1989		
Name	Street Address	City	ST	Zip	MCAEXP	Rating
Hal Amundson	21 S. Dakota St.	Dillon	MT	59725	9001	0
Alexander Auseklis	P.O.Box #274	Kalispell	MT	59901	8804 *	1568
John R. Barto	2620 2nd Ave. S.	Great Falls	MT	59405	9999	1456
Tom Booth	P.O.Box #430	Plains	MT	59859	8907	1765
Leslie Brennan	P.O.Box #2404	Colstrip	MT	59323	8902 *	1776
Daniel E. Britt	837 Woody St. #3	Missoula	MT	59801	8905	1666
Glenn Brittingham	P.O. Box 6161	Helena	MT	59604	8909	1181
Michael Britz	2102-1/2 East 6th Ave.	Helena	MT	59601	8909	1661
John Butler	335 W. Spruce #3	Missoula	MT	59802	8904	1446
Romie G. Carpenter	1105 Haaglund #18	Missoula	MT	59802	8904	1892
John B. Carr	Box 1323	Jackson	WY	83001	8911	1866
Theodore R. Catton	434 S. 5th W.	Missoula	MT	59801	8904	1792
James Clay	P.O.Box 1465	Colstrip	MT	59323	8904	859
Kenneth C. Cook, Jr.	6640 River Rd.	Bozeman	MT	59715	8909	1387
Mickey J. Crews	2007 S. Billings Blvd #20	Billings	MT	59101	8906	1440
Jacob Czyz	2323 32nd St. W. #8	Billings	MT	59102	8906	1594
Ron R. Deike	1130 Arsenal Rd., Apt. C	Hill AFB	UT	84056	8911	2085
Zeth duBois	P.O. Box 721	Ennis	MT	59729	8909	1116
Lawrence W. Dunkin	3325 2nd Ave. North	Great Falls	MT	59401	8903	1423
Ron Erickson	3250 Pattee Canyon Dr.	Missoula	MT	59803	8905	1767
Gregg J. Ford	2964 Sunnyside	Helena	MT	59601	8810 *	1633
Thomas C. Gluick	10 Parsons Drive	Missoula	MT	59802	8905	1475
Arman D. Goplen	1708 1st Ave. W. Apt. C	Kalispell	MT	59901	8910	1685
Richard J. Gray	4185 Grizzly Way	Stevensville	MT	59870	8911	1466
William H. Greer	P.O.Box #293	Ashland	MT	59003	8903	1848
Duane H. Hildenstab	2995 Prospect #6	Helena	MT	59601	8908	1630
John R. Hutcherson	120 Monroe	Billings	MT	59101	8903	1497
J. Michael Jensen	3714 Creekwood	Missoula	MT	59802	8907	1990
Ray E. Jorgenson	117 Camas Prairie Rt.	Plains	MT	59859	8907	1579
John Kennedy	P.O.Box #2307	Colstrip	MT	59323	8903	1338
John H. Leitel	P.O.Box #85	Almont	ND	58520	8904	1865
Jonathan Lenchner	1308 S. 5th West	Missoula	MT	59801	8911	2260
Douglas A. Logan	604 53rd St. S.	Great Falls	MT	59405	9002	
Coyle K. Long	1404 A. Street	Butte	MT	59701	8903	1478
William M. Lynch	4245 Palisades Park Dr.	Billings	MT	59106	8905	1886
James Magorian	1225 North 46th St.	Lincoln	NE	68503	0	1915
Daniel P. Maltby	508 Kinglet Court	Great Falls	MT	59404	9002	
David E. Marriotti	P.O.Box 1937	Colstrip	MT	59323	8912	1121
Dan McAleer	5108 Woodbird Court	Great Falls	MT	59404	9002	
William McBroom	2321 Raymond	Missoula	MT	59802	8904	1729
Daniel J. McCourt	608 W. Central	Missoula	MT	59802	8907	1769
Jeffrey McDowell	403 N. 4th	Hamilton	MT	59840	8902 *	0
Wally McMannis	255 Antigone Dr.	Hamilton	MT	59840	8902 *	0
Robert S. Melquist	516 N. I St.	Livingston	MT	59047	8901 *	0
Jason Miller	P.O.Box #372	Arlee	MT	59821	8904	1222
Harold Moneyhun	P.O.Box 6207	Sheridan	WY	82801	8903	1371
Sherwood Moore	453 Minnesota	Missoula	MT	59801	8911	1468
Paul S. Motta	P.O.Box #852	Ennis	MT	59729	8810 *	2014
Donald G. Norrid	2480 E. Broadway #6B	Helena	MT	59601	8810 *	1561
Nick L. Pazderic	Gen. Del. Canyon Lodge	Yellowstone N.P.	WY	82190	9004	1650
Lyle I. Petersen	P.O.Box #146	Paradise	MT	59856	8903	1461
Dennis F. Petrak	1909 Colorado Ave.	Black Eagle	MT	59414	8911	1648
Joseph D. Petrusaitis	503 S. 2nd	Hamilton	MT	59840	8812 *	1224
Robert L. Phillips	305 Turnquist Rd.	Ronan	MT	59864	8905	1714
John W. Piatt	P.O. Box 201	Santa	ID	83866	8909	1519
Donald M. Price	1615 Alder Court	Bozeman	MT	59715	8903	1360
Chad Q. Robinson	2520 2nd Ave. N. #11	Billings	MT	59101	9003	1728
Steven R. Scarff	1143 N. 22nd St.	Billings	MT	59101	8905	1587
Mike Serpa	749 Birch	Pocatello	ID	83201	8909	1303
David W. Shughart	359 Marin Lane	Florence	MT	59833	8904	1843
Earl L. Smith	749 32nd Ave. NE	Great Falls	MT	59404	8910	1292
Steve Smith	528 Ave. G.	Powell	WY	82435	8909	2128
Stuart A. Smith	315 5th Ave. N.	Great Falls	MT	59401	8902 *	1336
Murray Randel Strong	Box 6718	Bozeman	MT	59715	8909	1551
Kip H. Stubberud	1805 9th Ave.	Helena	MT	59601	9008	2087
Richard Suko	841 Washington	Billings	MT	59101	8906	1002
Miroslaw Szulczynski	301 S. 4th St. Apt. 8	Hamilton	MT	59840	8902 *	1295
Judson L. Temple	12413 Eric Field Place	Oklahoma City	OK	73142	8903	2060
John Charles Thompson	301 Stewart Court N.	Billings	MT	59105	9001	2200
J. Roger White	Box #715	Superior	MT	59872	8907	1667
Charles G. Williams	902 Jackson St.	Billings	MT	59101	9001	0
Calvin Wipf	714 18th Ave. S.	Fargo	ND	58102	8903	1829
Mark Wood 44456	ECF Box 107	Ellsworth	KS	67439	8911	1429

* indicates members expiring or expired this issue.

Ratings are current for events played and submitted before Dec. 31, 1988

