

MONTANA CHESS NEWS

JULY - AUG - SEPT 1985

VOLUME X - ISSUE 3

BILL LYNCH RETAINS MONTANA STATE TITLE

RON ERICKSON FIRST IN MIDSUMMER THEME OPEN

MONTANA POSTAL CHAMPIONSHIP

Oct. 10 1985-Oct. 10 1986

Registration: Mail to Jim Loy, 1104 S. Montana, #H-7, Bozeman, MT 59715. No entry fee required. MCA membership and Montana residence required.
Round Robins: Perhaps several sections followed by playoffs - depends on number of entries.
Time Control: 30 days for 10 moves.
Director: Jim Loy, 1104 S. Montana, #H-7, Bozeman, MT 59715.
Notes: All entries must be received by October 10 1985.

NWCC FALL CHESS TOURNAMENT

Sponsor - Wyoming Chess Assoc.

October 5-6, 1985

Place: Room 112, Social Science Bldg., NWCC Campus, Powell, Wyoming 82435.
Registration: 10:00-10:30am Oct. 5. Advance entries to Steve Smith, 528 Ave. G, Powell, Wyoming 82435. Entry Fee = \$10. USCF Membership required.
Rounds: 4 Round Swiss System. 11:00am, 4:00pm / 9:00am, 2:00pm.
Time Control: 40 moves / 2 hours, then 20 moves / hour thereafter.
Prizes: Based on entries: 1st - 50%, Top Under 1600 - 30%, Top Unrated - 20%.
Notes: If there is sufficient interest, there will be a speed tournament prior to the start of Round 4.

RIMROCK OPEN

Sponsor - Montana Chess Association

November 23-24, 1985

Place: Plaza Office Bldg. Conf. Room, 1629 Ave. D., Billings, MT 59102.
Registration: 10:00-10:30am, Oct. 19. Advance registration is advised. USCF & MCA required. Entry Fees = \$6 advance, \$10 at door, new members and renewing members free.
Rounds: 4 Round Swiss System. 11:00am, 4:00pm / 9:00am, 2:00pm.
Time Control: 40 moves / 2 hours, then 20 moves / hour thereafter.
Prizes: \$\$ Based on entries.
Director: Bill Lynch, 4245 Palisades Park Dr., Billings, MT 59106. 652-2063.
Notes: No Smoking. Tournament site phone 252-3237.

TURKEY OPEN

Sponsor - University-Community Chess Club

November 2-3, 1985

Place: Room 362, Social Science Bldg., Univ. of Mont. Campus, Missoula, MT 59801
Registration: 8:00-9:00am, November 2. Advance registration is advised. Players coming after 9:00 am may not be paired until the second round. USCF membership required. MCA or other State memb. req'd. Entry Fee=\$6 advance, \$9 at door.

continued page 4

In its fifth year, the Montana State Championship Playoff once again brought together a highly competitive and representative group of the state's best players to contest for the title of Montana State Champion. Defending Champ Bill Lynch was joined by Grand Prix winner Kip Stubberud and runnerup Mike Jensen, plus Montana Open Champion Matt Guthrie and Open qualifiers Bill Hammel and Gordon Shuck. Gordon took the place of Duane Hildentstab of Helena who had to work overtime on the playoff weekend under the adopted procedure that the first alternate should be the higher finishing of the Senior and Junior champions from the Montana Open.

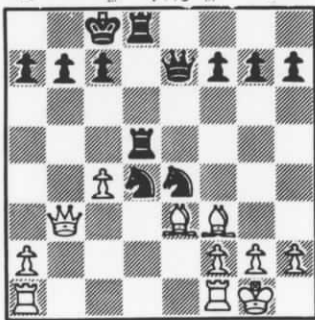
The general level of play was quite good this year, with most games being contested to the time control, and several well beyond in some tough endgames. There were a few big exceptions - notably Guthrie-Lynch in Round 3, but they were of the tactical crunch type rather than the Grandmaster Draw variety.

In round 1, Jensen built a strong position against Shuck in a Queen's Gambit Accepted by transposition - gained a pawn and ground out a win. Hammel ventured his Blackmar-Diemer Gambit prepared for the Midsummer Open theme tournament occurring simultaneously with the playoff when Lynch cooperated by replying ...d5, but went astray allowing Black to grab two pawns and survive the counterattack. Stubberud built a good position against Guthrie in a Double Fianchetto but got in trouble with the clock and came apart at the seams.

Jensen, Lynch, Guthrie - 1 ; Shuck, Hammel, Stubberud - 0.

Stubberud-Guthrie DOUBLE FIANCHETTO 1 Nf3 Nf6 2 g3 g6 3 b3 Bg7 4 Bb2 d6 5 Bg2 e5 6 d3 Nc6 7 c4 Be6 8 0-0 Qc8 9 Ng5 Bd7 10 f4 Ng4 11 Qd2 h6 12 Nf3 h5 13 Nc3 0-0 14 Nd5 Qd8 15 h3 Nf6 16 fxe5 Nxd5 17 cxd5 Nxe5 18 Rac1 c6 19 Kh2 Rc8 20 Nxe5 dxe5 21 Qe3 (At this point White has less than 6 minutes remaining to reach move 40.) Qa5 22 Bxe5 Rce8 23 d4 f6 24 dxc6 Bxc6 25 Bxc6 bxc6 26 Rxc6 fxe5 27 Rxc6 Rxf1 28 Rxc6 Rxf1 29 Qg5+ Kf8 30 Qh6+ Ke7 31 Qxh5 Rf2+ 32 Kg1 Qe1+. 0-1

In round 2, Jensen obtains the "two Bishops" against Hammel who fights back with the "two Knights!?" in a dynamic game which nonetheless ends in a draw after adjournment. Lynch, still keeping in the spirit of the Midsummer Open theme, opens 1 P-Q4 for the first time in his tournament career and survives a close encounter with the Benko Gambit when Stubberud fails to get compensation for the gambit pawn, and then loses another. Against Guthrie's Pirc, Shuck loses a pawn in the opening but gets just enough compensation to keep Black bottled up and recover the pawn as the endgame approaches, and a draw is then agreed. Lynch - 2; Guthrie, Jensen - 1½; Hammel, Shuck - ½; Stubberud - 0.



Jensen-Hammel QUEEN PAWN-STONEWALL 1 d4 d5 2 e3 Nf6 3 Bd3 Nc6 4 Nf6 Bg4 5 Be2 Bxf3 6 Bxf3 e5 7 c4 exd4 8 exd4 Bb4+ 9 Nc3 Qe7+ 10 Be3 0-0-0 11 0-0 Bxc3 12 bxc3 Ne4 13 cxd5 Rxd5 14 Qb3 Rhd8 15 c4 Nxd4 DIAGRAM 16 Bg4+ Kb8 17 Qb2 R5d6 18 Qa3 Qf6 19 Rab1 b6 20 c5 Rc6 21 Bxd4 Rxd4 22 Bf3 Qe7 23 Rfe1 f5 24 Qb2 Rxc4 25 cxb6 cxb6 26 Bd1 Qc5 27 Bb3 Rc3 28 Rbd1 Kc7 29 h3 Qe7 30 Qe2 Rg6 31 Rc1 Qc5 32 Rxc3 Qxc3 33 f3 Qc5+ 34 Qe3 Nd2 35 Qxc5 bxc5 36 Re7+ Kb6 37 Bg8 Nxf3+ 38 Kf2 Nd5 39 Bxh7 Rf6 40 Bg8 g6 41 Ke3 a6 42 Kd3 Nc6 43 Rd8. The game was adjourned here, and a draw was agreed without resumption of play. ½-½

Round 3 brought two of the shortest games of the playoff as Shuck destroyed Hammel's Blackmar-Diemer in 17 moves and Lynch resigned on tossing apiece to Guthrie after only 15 moves. Stubberud and Jensen took up the slack in a 46 move struggle that lasted well into the night. Mike is finally forced to resign when Kip threatens to Queen a pawn.

Guthrie - 2½; Lynch - 2; Jensen, Shuck - 1½; Stubberud - 1; Hammel - ½.

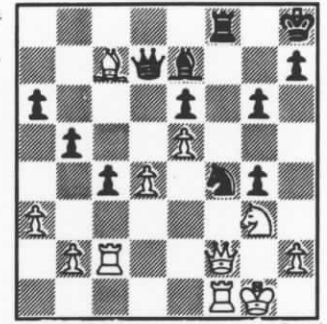
Stubberud-Jensen DOUBLE FIANCHETTO 1 N-KB3 P-Q4 2 P-KN3 N-KB3 3 B-N2 P-B3 4 0-0 B-B4 5 P-Q3 P-KR3 6 P-N3 P-K3 7 B-N2 B-K2 8 QN-Q2 QN-Q2 9 P-K3 0-0 10 Q-K2 P-QR4 11 P-QR3 B-R2 12 P-K4 PxP 13 PxP P-QN4 14 P-K5 N-Q4 15 P-QN4 PxP 16 PxP N-N3 17 N-Q4 N-N1 18 BxP NxB 19 NxN Q-Q2 20 NxB+ QxN 21 P-QR4 Q-B2 22 B-R3 KR-B1 23 B-Q6 Q-B3 24 P-B5 NxB 25 KR-B1 26 R-R3 Q-Q4 27 N-N3 N-Q6 28 R-Q1 Q-K5 29 QxQ BxQ 30 N-Q2 B-N3 31 N-B4 R-B3 32 RxN BxR 33 RxB P-R5 34 R-R3 R-R3 35 K-B1 R-R2 36 N-N6 P-B3 37 P-B4 K-B2 38 K-K2 PxP 39 PxP K-N3 40 P-R3 P-R4 41 K-Q3 K-B4 42 K-B4 K-Q5 43 B-N8 R-N2 44 K-N5 R-R8 45 B-Q6 P-N4 46 P-B6 Black Resigns. 1-0

Round 4 produced some very interesting games with chances on all sides. Under the very

strong burden of needing a win to keep pace with Guthrie, Lynch declines two draw offers from Shuck in a double edged Caro Kann, and gratefully accepts White's resignation after surviving a Bishop spear by a bit of luck. On his part, Guthrie withstands a tactical onslaught by Jensen against his King's Indian with a little tactics of his own. Hammel has to face some tactics too, as Stubberud sacs a Knight in the early opening, but Bill is able to survive the complications and go on to win.

Guthrie - 3½; Lynch - 3; Jensen, Shuck, Hammel - 1½; Stubberud - 1

Shuck-Lynch CARO KANN 1 e4 c6 2 d4 d5 3 e5 Bf5 4 Bd3 Bxd3 5 Qxd3 e6 6 Ne2 g6 7 O-O Bg7 8 f4 Ne7 9 Ng3 O-O 10 Nc3 Nd7 11 Be3 Qc7 12 Rac1 c5 13 Nb5 Qc6 14 c4 a6 15 Na3 dxc4 16 Rxc4 b5 17 Rc2 c4 18 Qe2 Nb6 19 Qf3 Rfc8 20 Nb1 Ned5 21 Bd2 a Bf8 22 a3 Rc7 23 Ne2 R8c8 24 N1c3 Qd2 25 Nxd5 Nxd5 26 Nc3 Rd8? b 27 Ne4 Be7 c 28 g4? d f5 29 Ng3 Kh8 30 Ba5! e fxg4! 31 Qf2 f Rf8 32 Bxc7 Nxf4 DIAGRAM 33 Qxf4?! g Rxf4 34 Rxf4 Qxc7 35 Rxc4 Qa5 36 Rc3 h Qa4 37 Kg2 Qd1 38 Rf3 Bxa3 i 39 bxa3 c3 40 R4f4 c2 41 Rf8+ Kg7 42 Nh5+ Kh6 j 43 Nf4 Qxf3+ 44 Kx f3 c1=Q 45 Nxe6 Qxa3+ 46 Ke4 b4 47 d5 b3 48 Rf3 Qb4+ 49 Kd3 g5 50 Rf6+ Kh5 51 Ng7+ Kg4 52 Rf1 Qb5+ 53 White Resigns. 0-1



a White offers a draw here. Black's decline is based as much on the imperative to go for the win in swiss tournaments as it is on the position. b Black unconsciously exposes himself to a Bishop spear from a5. c Still unconscious. d White is snoozing too! e White wakes up first, but oddly enough his 28th and 29th moves have opened up counterplay possibilities for Black. f Of course not Qxc4 Ne3 and Black's fork is as good or better than White's spear. However, Qe4 is probably the move necessary to hold White's advantage, 31...Rf8 32 Bxc7 Qxc7. g The question is, "Is White over-reacting to Black's threats?" Variations like - 33 Qd2 Bg5 34 Qd1 Nh3+ 35 Kh1 Qd5+ 36 Rg2 Nf2+ 37 Rxf2 Rxf2 38 Qg1 Be3 39 Nf1 Bxd4 and 33 Qe1 Qxd4+ 34 R1f2 Nh3+ 35 Kf1 Qd3+ 36 Rce2 Nxf2 are pretty scary, but 33 Qe3 seems to hold the fort as 33...Bg5 is met by 34 Qe4 and 33...Nh3+ 34 Kg2 Qd5+ can also be met by Qe4. h Black declines another draw offer despite the time scramble now in progress. i Black ventures into muddy waters on the assumption that his pawns will promote or win material. j 42...gxh5 leads to perpetual check or mate. This game offers living proof that there is certainly an element of luck in these playoffs!

Jensen-Guthrie KING'S INDIAN 1 d4 Nf6 2 Nf3 g6 3 g3 Bg7 4 Bg2 O-O 5 c4 D6 6 O-O Nc6 7 Nc3 Bg4 8 d5 Bxf3 9 Bxf3 Ne5 10 Qb3 Nxf4 11 exf3 Rb8 12 Be3 c5 13 Qc2 a6 14 Rab1 b5 15 b4 cxb4 16 Rxb4 Qc7 17 Qd3 Rfc8 18 Rfb1 bxc4 19 Qf1 Rxb4 20 Rxb4 Nd7 21 Ne2 Qa5 22 Qb1 Qxd5 23 Rb7 Ne5 24 Nd4 Nxf3+ 25 Nxf3 Qxf3 26 Rb8 Qc6 27 Qe4 Qxe4 28 Rxc8+ Bf8 29 Bh6 Qb1+ 30 Kg2 Qb7+ And Black wins by a whisker! 0-1

Hammel-Stubberud QUEEN PAWN 1 P-Q4 N-KB3 2 P-KB3 P-K3 3 P-K4 NxP 4 PxN Q-R5+ 5 K-K2 Qx P+ 6 B-K3 P-QN3 7 N-KB3 P-QB4 8 N-B3 Q-N2 9 P-Q5 P-Q3 10 K-B2 P-QR3 11 B-Q3 P-K4 12 R-K1 P-B4 13 B-KN5 P-KR3 14 NxP PxN 15 Q-R5+ K-Q2 16 RxP K-B2 17 B-KB4 B-Q3 18 R-K7+ N-Q2 19 BxB+ 20 R-K6+ K-B2 21 P-Q6+ K-N1 22 R-K7 Q-B3 23 Q-N6 N-B3 24 Q-N3 N-R4 25 Q-K5 B-Q2 26 B-B4 R-QR2 27 R-Q1 R-B1 28 B-K6 N-B3 29 BxB RxB 30 K-N1 P-B5 31 RxR NxR 32 QxP Q-B4+ 33 K-R1 K-B1 34 QxRP Q-K4 35 N-Q5 R-R1 36 N-K7+ K-N2 37 N-N6 Q-K7 38 QxQ RxQ 39 RxR R-R3 40 N-K7 R-K3 41 P-R3 P-N4 42 NxP K-B1 43 P-KN4 N-K4 44 K-N2 K-K2 45 K-N3 Black Resigns. 1-0

The suspense in Round 5 centered on Lynch versus Jensen after Guthrie uncharacteristically misjudged the danger of Hammel's Center Counter Gambit and was forced to resign after 20 moves. Jensen ceded a pawn in the opening, but hung on to his position and almost got the upper hand when Lynch tried too hard to press his advantage. However, in a flurry as the time control approaches Lynch is able to grab a rook and win the game and the state title. Meanwhile, Stubberud managed a tough win over Shuck in a long game.

Lynch - 4; Guthrie - 3½; Hammel - 2½; Stubberud - 2; Jensen, Shuck - 1½.

Lynch-Jensen QUEEN'S GAMBIT DECLINED 1 d4 Nf3 2 c4 e6 3 Nc3 d5 4 Bf5 Be7 5 Nf3 O-O 6 e3 h6 7 Bh4 Ne5 8 Bxe7 Qxe7 9 Qc2 Nxc3 10 bxc3 dxc4 11 Bxc4 b6 12 Qe4 c6 13 Bd3 f5 14 Qf4 Bb7 15 Bc4 Re8 16 Qxf5 Nbd7 17 O-O Kh8 18 Qg6 Qf6 19 Qg4 c5 20 Bb5 Bxf3 21 gx f3 Re7 22 Kh1 Rf8 23 f4 Qf5 24 Qh4 Nf6 25 Bc6 Nd5 26 c4 Nf6 27 Bf3 cxd4 28 exd4 Rc2 29 Rfel Qd3 30 Qg3 Qxd4 31 f4 exf4 32 Qxc7 Qxf2 33 Qc6 Ng4 34 Bxg4 fxg4 35 Re8 g6 36 Rxf8+ Qxf8 37 hxg3 Qf2 38 Qg2 Qf3 39 Qa8+ K-h2 40 Qe4+ g6 41 Rel Black Resigns. 1-0

The question in everyone's mind at the end of the tournament was "Can Lynch really continue to win if he's only going to play once a year?" This reporter sincerely doubts it - so I'll hope to see you all more before the '86 playoff rolls around.

The Midsummer Open - played simultaneously with the Championship Playoff - was won by Ron Erickson at 4-1 ahead of Dave Shughart, Romie Carpenter and Ray Jorgenson, each with 3½-1½. This "theme" event, where everyone had to begin their games with 1 P-Q4 P-Q4, drew 12 players. Sentiment for the theme for 1986 was leaning toward "no theme" in the hopes of drawing greater participation.

The UCCC First Summer Open was won by Dave Shughart with a perfect 4-0. Ron Erickson placed second at 3-1 in this eight player event. Ron selected these games:

Shughart-Britt COLLE SYSTEM Dave handles the opening well and when Dan neglects to castle on either move 9 or 10 which could have given chances for equality or on move 12 which would have lost two pawns, he loses two pieces and the game. 1 P-K3 P-QB4 2 N-KB3 N-QB3 3 P-QB3 P-K3 4 P-Q4 N-KB3 5 B-Q3 P-Q4 6 O-O P-B5 7 B-B2 P-QR3 8 N/1-Q2 B-Q3 9 R-K1 P-K4 10 P-K4 B-KN5 11 PxQP NxP/4 12 NxQBP P-KB3 13 PxKP BxP 14 N/B3xP BxQ (a pseudo Queen sacrifice - it's about to be taken back with interest) 15 NxN+ K-B2 16 NxQ+ QRxN 17 RxB P-QN4 18 N-K3 N-K5 19 B-Q2 R-K1 20 B-K1 P-KN3 21 B-N3+ Black Resigns. 1-0

Erickson-Booth BIRD'S OPENING Tom unnecessarily allows the King's Rook file to be opened on the 11th move and later has to lose his Queen to avoid a mate. 1 P-KB4 P-Q4 2 P-K3 N-KB3 3 N-KB3 P-KN3 4 P-QN3 B-N2 5 B-N2 O-O 6 N-K5 N/1-Q2 7 B-K2 N-QB4? (a loss of a tempo to gain a spot for the Bishop) 8 P-Q3 P-QB3 9 N-Q2 P-KR4 10 P-KR3 B-B4? 11 P-KN4 PxP 12 PxP B-K3 13 B-KB3 N/4-Q2 14 O-K2 R-K1 15 Q-R2 N-B1 16 P-N5 N-Q2 (N-R2 is much better) 17 NxQBP BxB (PxN leads to mate in two) 18 NxQ KRxN 19 P-Q4 (the Bishop can no longer defend against the mate threat - perhaps Black should have tried P-KB4 here and hung on awhile since most of White's pieces are uncoordinated) BxP 20 PxP P-KB4 and Black resigns. 1-0 (A further note - if White plays NxN on 17, Black can't stop a mate within 6 moves - but Erickson never sees that far ahead.)

At the business meeting held in conjunction with the Montana Open, the new MCA 1985-86 officers were elected: President - Dennis Petrak, Western VP - Dan McCourt, Eastern VP - Jim Loy and Secretary/Treasurer - Bill Lynch. Great Falls was selected as the site for the 1986 Montana Open. Use of the USCF revenue sharing funds was discussed with a proposal being made to sponsor new members. The frequency of MCN was discussed, with no recommendations made. Gordon Shuck noted and thanked Missoula's UCCC for the outstanding work in developing chess in Montana. Report: D. Petrak.

Turkey Open cont'd:

Rounds: 5 Round Swiss System. 9:30am, 2:00pm, 7:00pm / 9:00am, 2:00pm.
Time Control: 40 moves / 2 hours, then 20 moves / hour thereafter.
Director: Bill McBroom, 2321 Raymond Ave., Missoula, MT 59802.
Prizes: 1st -\$75, 2nd -\$50, Best Under 1700 - \$30, 1500 - \$20, 1300 -\$10.
Plaque for biggest upset (both players must have established ratings.)
Notes: No Smoking. No computers.

SSSIC LSHIE
PREFORTED

Montana Chess
Association
MONTANA CHESS NEWS
Editor
William M. Lynch
4245 Palisades Park Dr.
Billings, MT 59106