

MONTANA CHESS NEWS

MARCH-APRIL 1983 VOLUME VIII-ISSUE 2

STUBBERUD EDGES JENSEN ON TIE-BREAKS IN COPPER KING OPEN

\$1325 IDAHO OPEN

Sponsor - Idaho Chess Association

April 9-10, 1983

Place: Student Union Bldg., Boise State Univ., Univ. Ave. & Bellevue, Boise ID.
Registration: By mail or 8:00-9:00am, April 9. USCF+IDAHO membership required (other state memb. OK). USCF=\$20 Adult,\$10 Jr.,\$5 Tournament. IDAHO=\$4.
Open Section: Entry Fee = \$30, \$25 if received by April 7.
Reserve Sect: Open to under 1700. Entry Fee = \$22, \$18 if received by April 7. \$4 less for under 19 or over 59 years of age.
Rounds: 5 Round Swiss System. 9:30am,2:30pm,7:00pm / 8:30am,1:30pm.
Time Control: 50 moves / 2 hours per player.
Prizes: Open: \$150-100-50; 2000/over, 1800-1999, under 1800 classes - \$100-50-25.
\$50 Top Idaho player.
Reserve: \$75-50-25; 1500-1699, under 1500 classes - \$75-50-25.
Director: R.S.Vandenberg, 2316 Regan Ave., Boise, ID 83702.
Notes: All prizes guaranteed. No smoking. No computers. 5 Grand Prix Pts. available.

CROCUS OPEN

Sponsor - University-Community Chess Club

April 23-24, 1983

Place: Room 362 Social Sciences Bldg., Univ. of Montana Campus, Missoula, MT 59801
Registration: 9:00-9:30am, Feb. 5 or by mail. USCF+MCA memberships req'd except MCA not required for new players. USCF=\$20 Adult,\$10 Jr.,\$5 Tournament. MCA=\$4.
Entry Fees = \$8 at door, \$5 advance. Advance entries to address below.
New players free, Masters free, $\frac{1}{2}$ price over 2000.
Rounds: 5 Round Swiss System. 9:30am,2:00pm,7:00pm / 9:00am,2:00pm.
Time Control: 30' moves / 90 minutes per player, then 25 moves per hour thereafter.
Prizes: Trophies: 1st, 2nd, 3rd; Awards 1st under 1600, 1400, 1200.
Director: Robert McKean, 1530 Maurice, Missoula, MT 59801.

EXHIBITION: 7:00pm, Friday, April 22 at the tournament site by Herman Chiu - 2170. He will play up to 30 players, alternate colors and allow 3 passes per opponent. Fee = \$8 per board, first come first serve. Advance reservations to Bill McBroom, 2321 Raymond, Missoula, MT 59801. Herman Chiu is an experienced tournament player whose credits include wins over Day and Blocker and draws against Baczynsky, McCambridge, DeFirmian, Browne and former World Champion, Tigran Petrosian.

Notes: Limited smoking. UCCC always has a non-rated beginners section at each Open tournament if there are sufficient players interested. UCCC also now uses the same order of tie-breaking systems as has been traditional in all Montana tournaments sponsored by MCA

48TH MONTANA OPEN

(See page 4 for details)

May 21-22, 1983

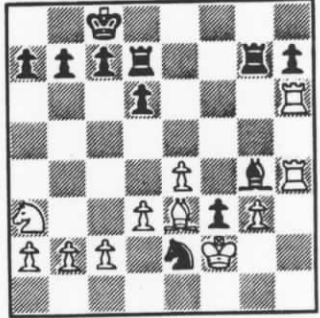
P1 Name	Rate	RD1	RD2	RD3	RD4	RD5	TOT
1 Kip Stubberud	1916	W13	D9	W6	W4	D3	4.0
2 Mike Jensen	1951	D8	D10	W13	W5	W4	4.0
3 Jim Loy	1974	W11	L5	W7	W9	D1	3.5
4 Gordon Shuck	1707	W10	W14	W5	L1	L2	3.0
Darren Stacey	1602	W12	W3	L4	L2	W11	3.0
6 Bob McKean	1682	D14	W8	L1	D11	W9	3.0
7 R. Carpenter	1611	L9	W13	L3	W8	W10	3.0
8 Dave Shughart	1598	D2	L6	W14	L7	W12	2.5
9 Ray Jorgenson	1517	W7	D1	D11	L3	L6	2.0
10 Dennis Petrak	1546	L4	D2	D12	W14	L7	2.0
11 Roger White	1598	L3	W12	D9	D6	L5	2.0
12 Steve Olson	1391	L5	L11	D10	W13	L8	1.5
13 Gregg Ford	1578	L1	L7	L2	L12	W14	1.0
14 Tom Booth	1544	D6	L4	L8	L10	L13	.5

P1 Name	Rate	RD1	RD2	RD3	RD4	RD5	TOT
1 Mark Wood	1296	W3	L4	W7	W2	D6	3.5
2 C. Handsaker	UNR	W5	W6	W4	L1	D7	3.5
3 Don Norrid	1552	L1	L5	W8	W7	W4	3.0
4 Lyle Petersen	1468	W8	W1	L2	D5	L3	2.5
5 Dan Polette	1361	L2	W3	W6	D4	L8	2.5
6 John Barto	1493	W7	L2	L5	W8	D1	2.0
7 Matt Janke	1221	L6	W8	L1	L3	D2	1.5
8 Mark Kellie	UNR	L4	L7	L3	L6	W5	1.0

P1 Name	RD1	RD2	RD3	RD4	RD5	TOT
1 V. Milosevic	L3	W5	W6	W2	W4	4.0
2 Paul Taylor	W5	W6	W4	L1	W3	4.0
3 Mike Poole	W1	W4	W5	W6	L2	4.0
Jim Cramer	W6	L3	L2	W5	L1	2.0
5 Patti Parker	L2	L1	L3	L4	BYE	1.0
6 Steve Conrady	L4	L2	L1	F3	WD	0

P 37 RPxP QR-Q1 38 R-Q2 Q-R2 39 Q-QB3 Q-B2 40 R-QR1 R-QR1 R-QR1 R-QR1 41 R2-R2 RxRch 42 RxR R-Q1 43 Q-R1 K-B3 44 R-R7 Q-Q3 45 Q-R3 QxQ 46 RxQ NxNP 47 R-N3 N-B2 48 RxP P-K5 49 K-N2 P-K6 50 K-B3 R-K1 51 K-K2 NxB 52 PxB K-K4 53 P-B7 KxP 54 R-N8 Black Resigns. 1-0 Mike started rather slowly in this tournament. However, by Sunday he was back in form as this well played game shows.

Stacey-Loy RD2 BD1 KING'S GAMBIT 1 e4 e5 2 f4 exf4 3 Nf3 g5 4 h4 g4 5 Ne5 a Be7 b 6 Bc4! Bxh4+ 7 Kf1 Nh6 8 Nxc4! c Nxc4 9 Qxc4 Bg5 d 10 Qh5 Qf6 11 Bxf7+ e Qxf7 12 Qxc5 Rf8 13 Qh5 f f3 14 Qxf7+ Rxf7 15 g3! Nc6 16 d3 Nd4 17 Na3 d6 18 Be3 Ne2 19 Kf2 Bg4 20 Rh6 0-0-0 21 Rah1 Rdd7 22 R1h4 Rg7? g DIAGRAM 23 Rxc4! Rxc4 24 Kxf3 Rxc3+ 25 Kxe2 d5 26 Re6 dxe4 27 Rxe4 a6 28 Re8+ Rd8 29 Re7! h h5 i 30 Bf4! Rg2+ 31 Kf3 j Black Resigns. 1-0 a The Kieseritsky Gambit. b Most common here is Nf6. The text move, characterized by Horowitz as insufficient (Chess Openings - Theory and Practice) is most likely played here to avoid well known lines. c Darren has followed Horowitz to a tee. The book gives the exclamation point, but no further analysis. d Striving to retain the extra pawn lest White obtain material equality with superior position. e Regaining the pawn. f Perhaps a bit too cautious. d3 is worth considering. g Exposing the vulnerable pawn. h With threats on h7 and c7. i Rd7 may be necessary. j Black has a dilemma - the threat of Rxc7+ followed by R any with discovered check. After ...Rg4 32 Rxc7+ Kb8 33 Rh7+ Kany 34 Rxc5 White has a winning advantage. Notes by Bill Lynch.



knowing no respect for his elders, plays a very fine game and gets a much deserved win. Commentary by Romie Carpenter.

K4 P-K4 2 N-KB3 Q-B3 3 B-B4 B-B4 4 P-Q3 P-KR3 5 N-B3 B-N5 6 B-Q2 BxN 7 BxB P-Q3 8 P-Q4 N-Q2 9 0-0 N-K2 10 Q-Q3 0-0 11 QR-Q1 N-KN3 12 R-Q2 N-B5 13 Q-K3 Q-N3 14 P-KN3 N-R6ch 15 K-N2 N-N3 16 B-N3 P-QR4 17 P-R3 P-R5 18 B-R2 B-Q2 19 PxB N-N4 20 NxN PxN 21 PxB N-B1 22 PxB B-B3 23 B-Q5 N-K2 24 BxB NxB 25 P-K5 KR-K1 26 R-Q6 R-K3 27 RxR QxR 28 QxP R-QB1 29 R-Q1 RxP 30 R-Q6 Q-K2 31 R-B6 K-B1 32 Q-R5 K-K1 33 Q-R8ch Q-B1 34 QxQch KxQ 35 R-B4 R-K2 36 RxRP R-K3 37 P-B4 K-K1 38 P-B5 R-R3 39 B-Q2 R-R2 40 P-K6 PxB 41 PxB K-K2 42 R-K4 P-KN3 43 B-N5ch K-K1 44 P-QN4 P-N4 45 P-B4 R-QN2 46 PxB RxP 47 B-B6 R-KB4 48 R-B4 N-R2 49 R-B4 RxR 50 PxB K-B1 51 K-N3 N-B1 52 K-N4 N-Q3 53 K-N5 N-K5ch 54 KxP K-K1 55 P-KR4 NxB 56 KxN K-B1 57 P-K7ch K-K1 58 P-R5 K-Q2 59 K-B7 Black Resigns. 1-0 A hard fought game between two of the eventual winners of Section B.

Jensen-Stacey RD4 BD2 SICILIAN 1 P-K4 P-QB4 2 N-QB3 P-Q3 3 N-K2 N-KB3 4 P-KN3 P-KN3 5 B-N2 B-N2 6 0-0 0-0 7 P-QR4 N-QB3 8 N-Q5 NxN 9 PxN N-K4 10 P-KR3 P-QN3 11 P-Q4 N-Q2 12 R-R2 Q-B2 13 P-QN3 PxB 14 NxP B-N2 15 R-K1 N-KB3 16 P-QB4 KR-K1 17 R2-K2 P-QR3 18 B-N2 Q-Q2 19 Q-Q3 P-KR4 20 K-R2 B-QB1 21 B-QR1 N-R2 22 Q-Q2 N-B1 23 N-B6 BxB 24 RxB B-N2 25 R-K1 BxN 26 PxB Q-B2 27 P-QN4 P-K4 28 P-KB4 P-KB3 29 PxB QPxB 30 Q-R6 Q-N2 31 B-Q5ch N-K3 32 Q-K3 Q-B2 33 R-KB1 K-N2 34 R2-B2 P-KB4 35 R1-K1 N-Q5 36 P-N5 Px

Carpenter-Shughart RD4 BD5 GORING GAMBIT 1 e4 e5 2 d4 e5 3 d4 e5 4 e5 d4 5 e5 d4 6 e5 d4 7 e5 d4 8 e5 d4 9 e5 d4 10 e5 d4 11 e5 d4 12 e5 d4 13 e5 d4 14 f3 Nf6 15 Be6 Qe8 16 Qf5 Rf8 17 Nh3 g6 18 Qb5 Kxe6 19 Bg5 b6 20 Qc4+ Ke7 21 Rxf6 Rxf6 22 Rf1 Kd7 23 Rxf6 Ne5 24 Qd5 Rb8 25 Bf4 Nxc4 26 Rf7+ Kc8 27 Bxd6 Ne3 28 Rxc7+ Kd8 29 Qg5+ Black Resigns. 1-0 Dave commits a couple of inaccuracies (moves 8&9) and from then on is knee deep in "troubled waters" compounded by the offer of no less than four sacrifices.

tubberud-Shuck RD4 BD1 KING'S INDIAN ATTACK 1 N-KB3 P-Q4 2 P-KN3 N-KB3 3 B-N2 B-B4 4 P-Q3 P-K3 5 O-O P-B4 6 P-B4 B-K2 7 B-B4 N-B3 8 N-B3 O-O 9 Q-R4 B-Q3 10 B-N5 P-Q5 11 N-N5 B-K2 12 P-KR3 P-QR3 13 N-R3 P-R3 14 B-Q2 Q-B2 15 N-R4 B-R2 16 P-QN4 PxP 17 N-B2 P-K4 18 NxNP NxN 19 BxN BxB 20 QxB P-KN4 21 N-B3 B-B4 22 QR-N1 QR-N1 23 R-N2 B-Q2 24 R1-N1 B-B3 25 Q-Q2 N-R2 26 R-N6 KR-K1 27 P-KR4 R-K3 28 PxP BxN 29 RxR PxR 30 BxB NxP 31 B-N2 P-N4 32 PxP PxP 33 Q-N4 N-B2 34 B-R3 R-N3 35 P-R4 Q-B6 36 PxP K-N2 37 B-N2 Q-B7 38 R-N2 Q-B8+ 39 K-R2 Q-B2 40 Q-R5 N-Q1 41 R-N4 Q-B4 42 B-K4 K-B3 43 R-N2 N-N2 44 Q-R8 Q-Q2 45 Q-R8+ Q-N2 46 QxQ+ KxQ 47 BxN RxB 48 K-N2 K-B3 49 K-B3 P-R4 50 K-R4 R-N3 51 R-N1 Black Resigns. 1-0 A well played game where Kip's pawn plus combined with Gordon's weakened pawn structure decides the issue. Copper Kings Open game selection and commentary by Romie Carpenter.

MSU WINTER OPEN GAMES: RD1 BD1 Dennis Petrak-Jim Loy ROBATSCH DEFENSE 1 e4 g6 2 Nf3 Bg7 3 d4 d6 4 h3 Nf6 5 Bc4 Nxe4 6 O-O O-O 7 Re1 d5 8 Bd3 Nf6 9 c3 Nc6 10 Bf4 Re8 11 Qc2 Bd7 12 Ng5 Nh5 13 Bh2 e5 14 h4 exd4 15 Rxe8+ Qxe8 16 Kf1 dxc3 17 Nxc3 Nb4 18 Qe2 Bxc3 19 Qxe8+ Rxe8 20 Be2 Be5 21 Bxe5 Rxe5 22 g3 h6 23 a3 hxg5 24 axb4 Bh3+ 25 Ke1 Bg4 26 Ra3 Rxe2+ 27 Kf1 Rxb2 28 hxg5 Rxb4 29 Rxa7 Bf3 30 Ra8+ Kg7 31 Re8 Rb1+ 32 Re1 Rxe1+ White Resigns. 0-1

RD5 BD3 Romie Carpenter-Tim Eichhorn GORING GAMBIT 1 P-K4 P-K4 2 N-KB3 N-QB3 3 P-Q4 PxP 4 P-QB3 PxP 5 NxP B-QN5 6 B-B4 P-Q3 7 O-O B-K3 8 N-Q5 N-K2 9 Q-QN3 O-O 10 N-KN5 B-QB4 11 NxN+ QxN 12 BxB N-Q5 13 Q-KR3 P-KR3 14 BxP+ RxB 15 NxR QxN 16 B-K3 R-KB1 17 K-R1 N-QB7 18 BxB NxR 19 RxN PxP 20 Q-QN3 QxQ 21 PxQ RxP 22 K-N1 RxQNP 23 RxRP RxP/N3 24 R-R8+ K-B2 25 R-B8 P-B3 26 K-B1 R-K6 27 R-B7+ K-B3 28 RxP/QN2 RxP 29 R-N6 R-K3 30 K-B2 P-KN3 31 K-B3 K-K2 32 P-KR4 K-Q3 33 R-N7 P-B5 34 R-N1 K-B4 35 R-B1 K-N5 36 R-N1+ K-R6 37 R-B1 K-N6 38 R-N1+ K-B7 39 R-N4 P-B6 40 R-B4 K-Q6 41 R-B5 P-B7 42 White Resigns. 0-1

RD5 BD2 Jim Loy-Al Williams ENGLISH? 1 c4 e6 2 e4 c5 3 Nf3 Nc6 4 d4 cxd4 5 Nxd4 Nf6 6 f3 g6 7 Nc3 d6 8 Bg5 Be7 9 Nbd5 O-O 10 Bh6 Re8 11 g4 a6 12 Nd4 Kh8 13 Qd2 Ng8 14 Be3 Bh4+ 15 Bf2 Bxf2+ 16 Qxf2 Qg5 17 h4 Qc5 18 Nxc6 Qxf2+ 19 Kxf2 bxc6 20 Rd1 Rd8 21 h5 g5 22 c5 d5 23 exd5 exd5 24 Bd3 h6 25 Rhe1 Be6 26 Ne2 Nf6 27 Nd4 Bd7 28 Bf5 Re8 29 Bxd7 Nxd7 30 Rxe8+ Rx e8 31 Nxc6 Rc8 32 Rxd5 Rxc6 33 Rxd7 Rxc5 34 Rxf7 Rc2+ 35 Kg3 Rxb2 36 Rf6 Rxa2 37 Rxh6+ Kg7 38 Rg6+ Kh7 39 Rxc5 Rb2 40 Ra5 Rb6 41 Ra3 Rc6 42 Kf2 Re6 43 Re3 Rc6 44 Ke2 Kh6 45 Kd2 Kg5 46 Rc3 Rd6+ 47 Kc2 a5? Black Resigns. 1-0

RD5 BD1 Mike Jensen-Bill Egger STONEWALL ATTACK 1 P-Q4 P-Q4 2 P-K3 N-KB3 3 B-Q3 P-QB4 4 P-QB3 P-B5 5 B-QB2 P-K3 6 QN-Q2 N-QB3 7 P-KB4 B-K2 8 N-KB3 N-KN5 9 Q-K2 Q-B2 10 N-K5 B-R5+ 11 P-N3 NxN 12 BPxN B-N4 13 O-O Q-K2 14 N-KB3 B-R3 15 P-K4 BxB 16 QRxB B-Q2 17 Q-K3 P-R3 18 N-KR4 P-KN4 19 N-N2 O-O-O 20 P-QN3 QR-KB1 21 R-B6 N-N1 22 Q-KB2 B-K1 23 KPxQP PxP 24 N-K3 Q-Q1 25 NPxBP PxP 26 NxP N-Q2 27 N-Q6+ K-N1 28 R-QN1 NxR 29 RxP+ K-R1 30 Q-KB3 P-KN5 31 R-N8+ Black Resigns. 1-0

RD4 BD5 Dennis Petrak-Romie Carpenter ALEKHINE'S DEFENSE 1 e4 Nf6 2 e5 Nd5 3 Bc4 Nb6 4 Bb3 d6 5 Nf3 Nc6 6 Qe2 g6 7 Bxf7+ Kxf7 8 Ng5+ Ke8 9 e6 Nd4 10 Qe4 Nxe6 11 Nxe6 Bxe6 12 Qxe6 Qd7 13 Qe4 Qc6 14 Qxc6+ bxc6 15 d4 Bg7 16 c3 e5 17 dxe5 Bxe5 18 O-O Rb8 19 Re1 Kd7 20 b3 Rhe8 21 Bd2 Nd5 22 g3 Bg7 23 Kf1 Nf6 24 Na3 Ne4 25 Nc4 d5 26 f3 Nxc3 27 Ne3 Re7 28 Nd1 Ne4 29 fxe4 Bxa1 30 Bc3 Bxc3 31 Nxc3 dxe4 32 Nxe4 Rf8+ 33 Kg2 Ke8 34 Re2 Rff7 35 Kh3 Kf8 36 Nc3 Rxe2 37 Nxe2 Rf2 38 Nd4 Rxa2 39 Nxc6 Ke8 40 Nd4 Kd7 41 Nb5 a5 42 Nc3 Ra3 43 Ne4 Kc6 44 Nd2 Kb5 45 Kg4 h6 46 h4 Kb4 47 Kf4 Rxb3 White Resigns. 0-1

Remember, the 48th Montana Open is the qualifier for the 1983 Montana State Championship playoff. Four players will qualify to join the already seeded players, 1983 State Champ Jim Loy and 1983 Grand Prix and Junior Champ Matt Guthrie in the six man round robin playoff to be held in June or July at a site selected by the qualified players. Be there - it could well be the premier tournament of the year!

Place: Board and Russell Rooms, Sheraton Inn, 400 10th Ave. S., Great Falls, MT.
 Registration: By mail to John R. Barto, 2620 2nd Ave, S., Great Falls, MT 59405. At door 8:00-9:00am, May 21. USCF+MCA membership required (except Beginners sect.) may join at site. USCF=\$20 Adult,\$10 Jr., \$5 Tournament. MCA=\$4 Adult,\$3 Jr.
 Open Section: Entry Fee = \$8 advance, \$10 at door, Juniors- \$4 advance, \$5 at door.
 Reserve Sect: Open to those rated 1550 and below. Entry Fee = same as Open.
 Beginners: Open to those 13 years of age and under or rated under 1000. No entry fee.
 Rounds: 5 Round Swiss System. 9:30am,2:30pm,7:30pm / 10:00am,3:00pm.
 Time Control: 40 moves / 2 hours per player, then 25 moves per hour thereafter.
 Prizes: Open - Trophies 1st, 2nd, 3rd, Top Junior, Best Under 1500. Reserve - Trophies 1st, 2nd. Additional cash prizes as permitted by entries.
 Director: Otto Grosse, 3401 4th Ave. N., Great Falls, MT 59401.
 Notes: MCA business meeting to be scheduled between rounds - election of officers and determination of site for 1984 Open Tournament.

UCCC 2ND WINTER OPEN 1/20-2/10, 1983

P1 Name	Rate	RD1	RD2	RD3	RD4	TOT
1 R. Carpenter	1610	W23	W6	W9	D2	3.5
2 John Hay	1516	W18	W21	W4	D1	3.5
3 Charles Ahern	1540	W20	D16	W8	W10	3.5
4 Dave Leppert	1914	W14	W10	L2	W9	3.0
5 Raymond Racene	1421	L21	W20	W16	W11	3.0
6 Thomas Mostad	1217	W12	L1	D7	W13	2.5
7 Robert McKean	1643	W19	L9	D6	W17	2.5
8 Gregg Ford	1547	½BY	W17	L3	W16	2.5
9 Dave Shughart	1484	W24	W7	L1	L4	2.0
10 Dan Britt	1500	W15	L4	W18	L3	2.0
11 Dan McCourt	1521	L16	W23	W15	L5	2.0
2 Bill McBroom	1529	L6	W19	L13	W18	2.0
13 Ron Erickson	1396	L22	W24	W12	L6	2.0
14 Derrick Watson	1409	L4	L18	W20	W19	2.0
15 Sherwood Moore	1034	L10	BYE	L11	W23	2.0
16 Phillip Reno	1104	W11	D3	L5	L8	1.5
17 R. Johnston	1069	½BY	L8	W23	L7	1.5
18 Guido Riley	1051	L2	W14	L10	L12	1.0
19 Tim Hovet	1319	L7	L12	W24	L14	1.0
20 Gary Fisher	1252	L3	F5	F14	W24	1.0
21 Mike Jensen	1951	W5	F2	WD	WD	1.0
22 Howard Hoene	1870	W13	WD	WD	WD	1.0
23 Ron White	1292	L1	L11	L17	L15	0
24 James Knudtson	UNR	L9	F13	F19	F20	0

Riley-Watson RD2 QUEEN PAWN 1 d4 d5 2 e3
 Nf6 3 Bd3 g6 4 c4 e6 5 Nf3 Nbd7 6 0-0 Ng7
 7 cxd5 Nxd5 8 Nbd2 b6 9 e4 Ne7 10 Qe2 0-0
 11 e5 Bh7 12 Ne4 Rc8 13 Be3 Nf5 14 Bg5 Nx
 d4 15 Nxd4 f6 16 Nxe6 Qe8 17 Nxf8 Qxf8 18
 exf6 Nxf6 19 Nxf6+ Bxf6 20 Qe6+ Kg7 21 Bx
 f6+ Qxf6 22 Rfe1 Qg5 23 Qe7+ Black Resigns.
 Leppert-Hay RD3 BD1 SICILIAN 1 P-K4 P-QB4
 2 N-KB3 P-K3 3 N-QB3 P-Q3 4 P-Q4 Pxp 5 NxP
 N-KB3 6 B-KN5 N-B3 7 P-QR3 B-K2 8 B-K3 0-0
 9 P-KR3 B-Q2 10 Q-Q2 NxN 11 BxN B-B3 12 B-
 Q3 P-K4 13 B-K3 P-Q4 14 Pxp NxP 15 NxN BxN
 16 P-KB3 B-R5+ 17 B-B2 P-B4 18 0-0-0 BxB
 19 QxB Q-N4+ 20 K-N1 KR-Q1 21 KR-N1 P-QR4
 22 P-KR4 Q-B5 23 B-K2 P-K5 24 P-KN3 Q-K4
 25 Pxp Bxp 26 B-B4+ K-R1 27 R/N1-K1 RxR+
 28 RxR R-QB1 29 Q-Q2 Q-B2 30 B-Q3 BxB 31
 QxB P-KN3 32 P-N3 Q-B6 33 QxQ+ RxQ 34 R-Q3
 RxR 35 Pxr K-N2 36 K-B2 K-B3 37 K-Q2 K-K4
 38 K-K3 K-Q4 39 P-Q4 P-N3 40 K-Q3 P-R3 41
 K-K3 P-QN4 42 K-Q3 P-KN4 43 P-R5 P-B5 44
 Pxp Pxp 45 K-Q2 Kxp 46 K-B3 K-B6 47 Kxp Kxp
 48 K-B5 Kxp 49 K-N6 P-N5 50 Kxp P-N6 51 K-
 N7 P-N7 52 P-R6 P-N8=Q 53 P-R7 Qxp White
 Resigns.

*****4*****

SWIIO LSRII
 PRESORTED

Montana Chess
 Association
 MONTANA CHESS NEWS
 Editor
 William M. Lynch
 1144 Harvard Ave.
 Billings, MT 59102