

# MONTANA CHESS NEWS

MAY-JUNE 1982

VOLUME VII - ISSUE 3

## MARC LYNN CLAIMS MONTANA OPEN CHAMPIONSHIP

### DAN POLETTE EDGES LONG, ROGERS AND MITCHELL TO TAKE RESERVE TITLE

MIDSUMMER OPEN                      Sponsor - University Community Chess Club                      July 24-25, 1982

Place: Room 362, Social Science Bldg., Univ. of Montana Campus, Missoula, MT 59801

Registration: 9:00-9:30am, July 24. USCF membership req'd, MCA memb. req'd except for new players - USCF=\$20 Adult, \$10 Junior, \$5 Tournament; MCA=\$4 Adult, \$3 Jr. ; USCF+ MCA=\$20 Adult, \$10 Jr., \$9 Tournament. Entry Fees=\$5 advance, \$8 at the door. Advance entries to address below. New players free.

Rounds: 5 Round Swiss System. 9:30am, 2:00pm, 7:00pm / 9:00am, 2:00pm.

Time Control: 30 moves / 90 minutes, then 25 moves / hour thereafter.

Prizes: Trophies 1st, 2nd, 3rd, Best Under 1600, 1400, 1200.

Director: Tim Hovet, 112 Helena Court, Missoula, MT 59801.

Notes: Limited Smoking. The Montana Closed Championship playoff is scheduled to be held simultaneously with this tournament.

\*\*\*\*\*

RIMROCK OPEN                      Sponsor - Billings Chess Club                      August 28-29, 1982

Place: Basement meeting room, Plaza Office Bldg., 1629 Ave. D., Billings, MT 59102

Registration: 9:00-9:30am, August 28. USCF+MCA required - see above ad. Entry Fees = \$5 advance, \$8 at the door, \$1 less for juniors, new players free. Non-rated section free, no memberships required.

Rounds: 5 Round Swiss System. 9:30am, 2:00pm, 7:00pm / 9:00am, 2:00pm.

Time Control: 40 moves / 90 minutes, then 25 moves per hour thereafter.

Prizes: Trophies and/or chess books and accessories according to entries.

Director: Bill Lynch, 1144 Harvard Avenue, Billings, Montana 59102.

Notes: Limited smoking. Speed tournament - rounds preceding regular games, entry fee = \$1. 70% 1st & 30% best in bottom half. An alternate site is being sought and will be advertised next issue if obtained.

\*\*\*\*\*

### KARPOV SHARES FIRST IN LONDON - LOSING ONLY TO YASSER SEIRAWAN

USCF - A final surge allowed World Champion Anatoly Karpov (USSR) to catch GM Ulf Andersson (Sweden) and so to share first at the recent Phillips & Drew Kings Tournament in London. Both scored 8.5-4.5 against the nearly all GM field. US co-Champion Seirawan also started slowly but then rolled up an impressive set of six victories on his way to sole possession of third at 8.0-5.0. Besides his first ever victory over Karpov, Seirawan's scalps included Grandmasters Ljubomir Ljubojevic (Yugoslavia), Jonathan Nunn (Great Britain), Anthony Miles (Great Britain) and Larry Christianson (USA). There was a four way tie for fourth at 7 points: GM Ljubojevic, Lajos Portisch (Hungary), Jan Timman (Netherlands) and Miles. That former World Champion Boris Spassky (USSR) could do no better than eighth place tie at 6.5 amply testifies to the strength of the event.

(See Seirawan-Karpov game page 6.)

P1 Name	Rate	RD1	RD2	RD3	RD4	RD5	TOT
1 Marc Lynn WY	2199	W22	W7	W8	W5	W4	5.0
2 Ken Shinn	1772	W20	W6	L5	W16	W13	4.0
3 Mike Jensen	1839	W21	D12	D6	W8	W9	4.0
4 Jim Loy	1830	W23	W11	W16	W12	L1	4.0
Matt Guthrie	2102	W18	W9	W2	L1	D7	3.5
Bill Lynch	1861	W13	L2	D3	W21	W12	3.5
7 Jim Magorian	1776	W28	L1	W18	W19	D5	3.5
8 Gordon Shuck	1703	W26	W10	L1	L3	W17	3.0
9 Andy Shuck	1812	W25	L5	W22	W17	L3	3.0
10 Kip Stubberud	1984	W17	L8	L12	W25	W16	3.0
11 Pat Hauptman	1698	W27	L4	L17	W18	W19	3.0
12 Darrin Stacey	1204	W14	D3	W10	L4	L6	2.5
13 Don Norrid	1542	L6	W27	D24	W15	L2	2.5
14 Tom Booth	1625	L12	L19	D20	W22	W21	2.5
15 Roger White	1613	L16	W23	D21	L13	W25	2.5
16 Mark Hagenston	UNR	W15	W24	L4	L2	L10	2.0
17 Ray Jorgenson	1540	L10	W26	W11	L9	L8	2.0
18 Mark Laceky	1553	L5	W20	L7	L11	W26	2.0
19 Steve Olson	1209	L24	W14	W23	L7	L11	2.0
20 Gary Fisher	1393	L2	L18	D14	W28	D22	2.0
21 Jim Chester	1500	L3	W25	D15	L6	L14	1.5
22 D. Hildenstab	1568	L1	W28	L9	L14	D20	1.5
23 John Barto	1483	L4	L15	L19	D27	W28	1.5
24 Fred Betz	1675	W19	L16	D13	WD	WD	1.5
25 Lyle Petersen	1450	L9	L21	W26	L10	L15	1.0
26 Lawrence Dunkin	1306	L8	L17	L25	BYE	L18	1.0
27 Susan Pounds	1268	L11	L13	D28	D23	WD	1.0
28 Charles Chapman	1402	L7	L22	D27	L20	L23	0.5

47TH MONTANA OPEN / RESERVE May 15-16, 1982

Name	Rate	RD1	RD2	RD3	RD4	RD5	TOT
1 Dan Polette	1278	W9	W12	W2	W3	L4	4.0
2 Coyle Long	1518	W11	W4	L1	W5	W6	4.0
3 Bill Rogers	1210	W6	W8	W12	L1	W7	4.0
4 Terry Mitchell	1362	W14	L2	W13	W8	W1	4.0
5 Rick Sherwood	NON	W10	L6	W14	L2	W12	3.0
6 David Stacey	1380	L3	W5	D7	W12	L2	2.5
7 Mark Wood	1264	L12	W9	D6	W10	L3	2.5
8 James Bush	1429	W13	L3	W11	L4	WD	2.0
9 Brian Alley	NON	L1	L7	L10	W14	W13	2.0
10 Neale Sikveland	1333	L5	L13	W9	L7	W14	2.0
11 Chuck Borland	1273	L2	W14	L8	W13	WD	2.0
12 Gary Wendel	1464	W7	L1	L3	L6	L5	1.0
13 Matt Janke	1258	L8	W10	L4	L11	L9	1.0
14 Dave Lilly	UNR	L4	L11	L5	L9	L10	0

RD2 BD3 Gordon Shuck-Kip Stubberud SICILIAN  
 1 P-K4 P-QB4 2 N-KB3 P-Q3 3 B-Q3 P-KN3 4 P-B3  
 QN-B3 5 P-KN3 B-N2 6 B-B2 Q-R4 7 O-O P-N3 8 P-  
 Q3 QB-R3 9 B-K3 P-K3 10 QN-Q2 P-QN4 11 B-N3 P-  
 N5 12 B-R4 KN-K2 13 N-B4 BxN 14 PxP R-Q1 15 B-  
 KN5 P-B3 16 B-Q2 O-O 17 PxP Q-N3 18 BxN NxB 19  
 P-N5 N-R4 20 Q-B2 P-Q4 21 KPxP PxP 22 PxP QxP  
 23 KR-Q1 RxB 24 B-K3 R/1-Q1 25 RxR RxR 26 R-QB  
 N-N2 27 N-Q2 P-B4 28 P-QN3 Q-K7 29 P-QN4 PxP  
 Q-N3 Q-N4 31 R-B8ch K-B2 32 R-B7ch K-B1 33  
 R-B8ch K-B2 34 B-N5 N-B4 35 QxRch N-K3 36 QxQ  
 Black Resigns. 1-0

stars - our now familiar Wyoming expert, most of the state's 1700+ players and some startling youngsters who are prime to become the stars of years to come. With ten of 28 Open players rated over 1700 it was clear that it would be a real dogfight for first and the Championship playoff spots.

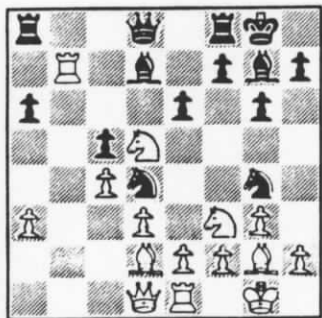
Second (!) round pairings included a faceoff between former state champions Ken Shinn and Bill Lynch, won by Shinn, and current co-champ Kip Stubberud waged a losing battle against Gordon Shuck. Meanwhile, Helena's Darrin Stacey, the 27th ranked player at 1204, had dispatched Tom Booth (1625) and drawn 5th ranked Mike Jensen (1839). Round 3 featured current co-champ Matt Guthrie battling past Shinn, a stand-off between Lynch and Jensen, and Kip against Darrin Stacey. When the dust settled Saturday night, only Wyoming's Marc Lynn, Guthrie and co-champ Jim Loy had perfect 3-0 scores while Stacey was alone in 4th place with 2½-½!

Sunday found Lynn in fine form, and he stood up to the tests of Guthrie and Loy. Shinn and Jensen fashioned 2 wins apiece to join Loy at 4-1 and nail down spots in this year's championship playoff along with Stubberud, Guthrie, Lynch and Loy. Stacey finally succumbed to past champs Lynch and Loy, but held on to 12th place and a tie for best under 1600 honors with Don Norrid. His performance rating was 1828! Matt Guthrie held his Junior title at 3½-1½ but Darrin could be there in 1983.

In the Reserve Section, Dan Polette, Coyle Long, Bill Rogers, and Terry Mitchell took turns knocking each other off to finish in a group at 4-1. Dan, another youngster with fine prospects, was awarded the 1st place trophy on tie-breaks, having played each of the other three and lost only to Mitchell in the final round.

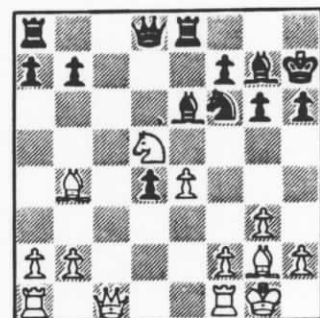
This was as fine and exciting an Open as this player (and tournament director) can remember. Many thanks are due to Kip Stubberud, who arranged for the site, and to all the players, whose cooperation and sportsmanship made this a smooth event. The help of Andy Shuck and Jim Chester at the director's table was also invaluable. - Report and game notes by Bill Lynch.

B2 BD3 Darrin Stacey ANDERSSONS 1 P-K3 B-K3 6 Q-N3 PXP 7 BXP BxB 8 QxB QN-Q2 9 N-B3 O-O 10 O-O N-N3 11 Q-N3 P-KR3 12 B-R4 R-B1 13 QR-B1 P-B4 14 N-QN5 PXP 15 RxB NxB 16 N/5xQP N-Q3 17 R-Q1 Q-B2 18 B-N3R-B1 19 N-QN5 Q-B7 20 NxB PXP 21 QxQ RxQ 22 BXP N-K5 23 B-K5 BxB 24 NxB RxB 25 P-B3 N-B4 26 P-QR3 R-R7 27 N-B4 P-QN4 28 N-Q6 P-R3 29 R-Q5 N-R5 30 R-Q3 K-B1 31 P-R4 K-K2 32 N-K4 N-N7 33 R-B3 N-B5 34 N-B5 RXP 35 RxB NxB 36 NXP K-Q3 37 P-K4 N-B7 38 K-B2 K-B3 39 K-K2 K-N3 40 K-Q2 KxN 41 KxN K-N3 42 K-N3 K-B4 43 P-R5 P-N4 44 P-K5 P-QN5 45 P-N3 K-N4 46 P-B4 PXP 47 PXP K-B4 48 P-B5 K-Q4 49 P-K6 PXP 50 PXP KXP 51 KXP K-B4 52 K-B3 K-N4 53 K-Q3 KXP K-K2 K-N5 55 K-B2 P-R4 56 K-N2 P-R5 57 K-R2 P-R6 58 K-N1 Drawn.  $\frac{1}{2}$ - $\frac{1}{2}$

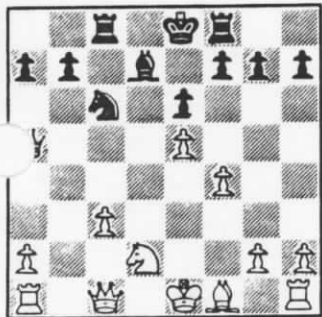


RD3 BD1 Marc Lynn-Gordon Shuck ENGLISH 1 P-QB4 P-QB4 2 N-QB3 N-KB3 3 P-KN3 P-KN3 4 B-N2 B-N2 5 N-B3 N-B3 6 O-O O-O 7 P-Q3 P-Q3 8 P-QR3 B-Q2 9 B-Q2 Q-B1 10 R-K1 N-KN5 11 R-N1 P-QR3 12 P-N4 N-Q5 13 N-Q5 Q-Q1 14 PXP PXP 15 RXP P-K3 DIAGRAM 16 RxB! QxR 17 N-N6 Q-Q3 18 NxB Rx N 19 NxB QxN 20 P-K3! (20 BxB? QxPch) Q-B3 21 QxN! R-Q1 22 B-KB1 Q-N7 23 B-B1 Q-R8 24 Q-K2 R-N1 25 P-K4 B-B6 26 B-Q2 QXP 27 BxB QxB 28 Q-Q1 P-QR4 29 Q-R1 Q-N5 30 R-K2 P-R5 31 R-R2 R-R1 32 R-N2 Q-R4 33 Q-R3 Q-K8 34 K-N2 Q-Q8 35 B-K2 Black Resigns. 1-0

7 cxd5 exd5 8 d3 Nf6 9 Bg5 h6 10 Bd2 O-O 11 Qc1 Kh7 12 e4 dxe4 13 dx e4 Nd4 14 Nxd4 cxd4 15 Nd5 Be6 16 Bb4 Re8 DIAGRAM 17 Nc7!? Rc8 18 Nx e8 Rxc1 19 Nxf6+ Bxf6 20 Raxc1 Bxa2 21 f4 Qb6 22 Bc5 Qxb2 23 e5 Bd8 24 Bxa7 d3 25 Rcd1 Ba5 26 Be4 d2 27 Bf3 b6 28 Bb8 Bb3 29 Rb1 Qd4+ 30 Kg2 Bc2 31 e6 Bxb1 32 exf7 Qf6 33 Bd5 Qd8 34 Bb3 Be4+ 35 Kh3 Qxb8 36 g4 Bb4 37 f5 gxf5 38 gxf5 Qd8 39 Rg1 Qxf5+ 40 Rg4 Bxg4+ 41 Kxg4 d1=Q + 42 Bxd1 Qxd1+ 43 Kh3 Qf3+ 44 Kh4 Be7+. 0-1 This is certainly a candidate for the best played game of the tournament, hard fought and interesting!



RD3 BD2 Ken Shinn-Matt Guthrie ENGLISH 1 Nf3 c5 2 g3 Nc6 3 Bg2 g6 4 O-O Bg7 5 c4 e6 6 Nc3 d5 7 cxd5 exd5 8 d3 Nf6 9 Bg5 h6 10 Bd2 O-O 11 Qc1 Kh7 12 e4 dxe4 13 dx e4 Nd4 14 Nxd4 cxd4 15 Nd5 Be6 16 Bb4 Re8 DIAGRAM 17 Nc7!? Rc8 18 Nx e8 Rxc1 19 Nxf6+ Bxf6 20 Raxc1 Bxa2 21 f4 Qb6 22 Bc5 Qxb2 23 e5 Bd8 24 Bxa7 d3 25 Rcd1 Ba5 26 Be4 d2 27 Bf3 b6 28 Bb8 Bb3 29 Rb1 Qd4+ 30 Kg2 Bc2 31 e6 Bxb1 32 exf7 Qf6 33 Bd5 Qd8 34 Bb3 Be4+ 35 Kh3 Qxb8 36 g4 Bb4 37 f5 gxf5 38 gxf5 Qd8 39 Rg1 Qxf5+ 40 Rg4 Bxg4+ 41 Kxg4 d1=Q + 42 Bxd1 Qxd1+ 43 Kh3 Qf3+ 44 Kh4 Be7+. 0-1 This is certainly a candidate for the best played game of the tournament, hard fought and interesting!



RD3 BD5 Kip Stubberud-Darrin Stacey ALEKHINES 1 P-K4 N-KB3 2 P-K5 N-Q4 3 P-QB4 N-N3 4 P-B5 N-Q4 5 N-QB3 NxB 6 NPxN N-B3 7 P-Q4 P-K3 8 P-KB4 P-Q3 9 BPXP PXP 10 B-R3 Q-R4! 11 Q-B1 PXP 12 BxB RxB 13 QPXP B-Q2 14 N-B3 R-B1! 15 N-Q2 DIAGRAM NxKP?! - Fearless. One would not guess from the game score that the rating differential was 780.- 16 N-K4 Q-Q4 17 Q-B2 B-B3 18 N-N5 P-KR3 19 R-Q1 Q-R4 20 NxKP?! PxB 21 B-K2 RXP 22 B-R5ch K-K2 23 R-Q2 B-K5 24 Q-Q1 QxBP 25 R-B1 BXP! 26 R xR Q-K6ch 27 B-K2 QxR 28 P-QR4 Q-K6 29 R-B2 N-B6mate. 0-1

d4 g5 7 c3 Bg7 8 Qa4 Bd7 9 Qb3 Qe7 10 Qxb7 Rb8 11 Qa6 Nf6 12 d5 Ne5 13 Nxe5 Qxe5 14 Qxa7 O-O 15 Re1 Ng4 16 Nd2 Qe7 17 Kh1 Ne3 18 Rxe3 R a8 19 Qxc7 fxe3 20 Bb5 exd2 21 Bxd2 Rfd8 22 c4 Bxb2 23 Rb1 Rc8 24 Q a7 Bf6 25 Ba5 DIAGRAM Ra8 26 Bxd8 Rxa7 27 Bxe7 Bxe7 28 Bxd7 Rxd7 29 Re1 Rc7 30 Rc1 Kg7 31 Kg1 Ra7 32 Rc2 Kf6 33 Kf2 Ke5 34 Kf3 h5 35 Ke3 Ra3+ 36 Kf2 Bd8 37 Re2 Rc3 38 h3 Rxc4 39 Kf3 Bb6 40 Re1 Rc3+ 41 Ke2 Re3+ White Resigns. 0-1 Good chess by the best!



RD4 BD1 Matt Guthrie-Marc Lynn KING'S GAMBIT 1 e4 e5 2 f4 exf4 3 Nf3 d6 4 Bc4 h6 5 O-O Nc6 6 d4 g5 7 c3 Bg7 8 Qa4 Bd7 9 Qb3 Qe7 10 Qxb7 Rb8 11 Qa6 Nf6 12 d5 Ne5 13 Nxe5 Qxe5 14 Qxa7 O-O 15 Re1 Ng4 16 Nd2 Qe7 17 Kh1 Ne3 18 Rxe3 R a8 19 Qxc7 fxe3 20 Bb5 exd2 21 Bxd2 Rfd8 22 c4 Bxb2 23 Rb1 Rc8 24 Q a7 Bf6 25 Ba5 DIAGRAM Ra8 26 Bxd8 Rxa7 27 Bxe7 Bxe7 28 Bxd7 Rxd7 29 Re1 Rc7 30 Rc1 Kg7 31 Kg1 Ra7 32 Rc2 Kf6 33 Kf2 Ke5 34 Kf3 h5 35 Ke3 Ra3+ 36 Kf2 Bd8 37 Re2 Rc3 38 h3 Rxc4 39 Kf3 Bb6 40 Re1 Rc3+ 41 Ke2 Re3+ White Resigns. 0-1 Good chess by the best!

RD4 BD2 Jim Loy-Darrin Stacey ANDERSSONS 1 a3 e5 2 e4 Nf6 3 Nc3 Nc6 4 Nf3 Bc5 5 Nxe5 Bx f2+ 6 Kxf2 Nxe5 7 d4 Nc6 8 e5 Ng8 9 Qg4 g6 10 Bg5 f6 11 exf6 Nxf6 12 Re1+ Kf8 13 Qf4 Kg7 14 Bh6+ Kg8 15 Bc4+ d5 16 Nxd5 Ng4+ 17 Qxg4 Black Resigns. 1-0 Jim was relieved to find that Darrin does make mistakes - but he may have to cherish this memory a long time.

RD5 BD1 Marc Lynn-Jim Loy RUY LOPEZ 1 P-K4 P-K4 2 N-KB3 N-QB3 3 B-N5 P-QR3 4 B-R4 P-Q3 5 O-O B-N5 6 P-B3 N-B3 7 R-K1 B-K2 8 P-KR3 B-R4 9 P-Q3 P-QN4 10 B-B2 O-O 11 QN-Q2 R-K1 12 N-R1 BxN 13 QxB P-Q4 14 B-N5 PXP 15 PXP P-R3 16 QR-Q1 N-Q2 17 B-B1 Q-B1 18 N-K3 N-B3 19 N-B5 K-R1 20 B-N3 R-B1 21 BxRP! PxB 22 NxB Black Resigns. Most of the fifth round games were rather anti-climactic, as the higher rated players pulled through to finish at the top - the first eleven finishers being the original eleven in scrambled order. Neither Stacey nor another Helena junior, Steve Olson, gave up easily, but theirs was to be another day. Watch for those names in future issues. Games from the reserve section will have to grace the pages of a future issue - there were some good battles there also, and well worth another look.



P1 Name	Rate	RD1	RD2	RD3	RD4	RD5	TOT
1 K. Stubberud	1984	W32	W19	D9	W10	W4	4.5
2 Matt Guthrie	2020	D25	W28	W15	W9	W8	4.5
3 Andy Shuck	1812	W36	W17	D10	D8	W14	4.0
4 Mike Jensen	1801	W41	W22	W14	W5	L1	4.0
5 Alan Aycock	1820	W45	W21	W35	L4	W16	4.0
6 Dennis Burke	1592	W34	L12	W45	W19	W15	4.0
7 R. Carpenter	1651	L27	W30	X32	W28	W13	4.0
8 Gordon Shuck	1703	W20	W27	W12	D3	L2	3.5
9 Roger White	1613	W30	W26	D1	L2	W22	3.5
10 Ray Jorgenson	1540	W38	W46	D3	L1	W23	3.5
11 Dan McCourt	UNR	L22	W41	D38	W29	W25	3.5
12 Willam Rogers	1210	W23	W6	L8	L14	W31	3.0
13 James Fletcher	1011	W24	L35	W21	W18	L7	3.0
14 Dan Britt	1478	W37	W43	L4	W12	L3	3.0
15 Ted Salvorson	UNR	W39	W18	L2	X40	L6	3.0
16 Ralph Pollock	1575	L26	W34	W20	W17	L5	3.0
17 Mark Hagenston	1450	W40	L3	W46	L16	W27	3.0
18 Jack Magee	1467	W33	L15	W26	L13	W32	3.0
19 Richard Park	1453	W44	L1	W42	L6	W30	3.0
20 Robert Taylor	1318	L8	W25	L16	W42	W28	3.0
21 Lyle Petersen	1450	W47	L5	L13	W38	W26	3.0
22 John Hay	1411	W11	L4	W43	D23	L9	2.5
23 Mark Laceky	1561	L12	W29	W27	D22	L10	2.5
24 R. Albrecht	1453	L13	D38	L25	W41	W39	2.5
25 Bill McBroom	1398	D2	L20	W24	D31	L11	2.0
26 M. McCafferty	1231	W16	L9	L18	W43	L21	2.0
27 Dan Polette	1278	W7	L8	L23	X46	L17	2.0
28 Derrick Watson	1463	W42	L2	W33	L7	L20	2.0
29 Sam Stem	1212	L35	L23	W36	L11	W43	2.0
30 Matt Janke	1258	L9	L7	W47	W44	L19	2.0
31 James Bush	1428	L43	W37	D40	D25	L12	2.0
32 Tim Montler	1392	L1	W44	LF	W33	L18	2.0
33 R. Stuckley	1161	L18	W39	L28	L32	W47	2.0
34 Stuart Riley	1243	L6	L16	L39	BYE	W44	2.0
35 Donnell Hunter	1569	W29	W13	L5	WD	WD	2.0
36 Steve Saroff	1322	L3	L40	L29	W47	W42	2.0
37 Tim Hovet	1202	L14	L31	BYE	D39	D38	2.0
38 Steve Olson	1209	L10	D24	D11	L21	D37	1.5
39 Chuck Chapman	1402	L15	L33	W34	D37	L24	1.5
40 Thomas Mostad	UNR	L17	W36	D31	LF	WD	1.5
41 Dave Shughart	1320	L4	L11	L44	L24	BYE	1.0
42 Sherwood Moore	1066	L28	BYE	L19	L20	L36	1.0
43 J. Anderson	UNR	W31	L14	L22	L26	L29	1.0
44 Dave Lilly	UNR	L19	L32	W41	L30	L34	1.0
45 Gregg Ford	1323	L5	W47	L6	WD	WD	1.0
46 Robert Radtke	1108	BYE	L10	L17	LF	WD	1.0
47 Guido Riley	UNR	L21	L45	L30	L36	L33	0

Fifty-five players (including 8 in a beginner's section) participated in the UCCC Crocus Open held in Missoula, April 24 and 25. In addition to the welcome regulars from around the state, three folks came from Lethbridge and a contingent came over from Great Falls.

Kip Stubberud and Matt Guthrie both finished with 4½, with Kip taking 1st place on tie-breaks. Mike Jensen of Missoula was third overall with 4 points. Alan Aycock, Andy Shuck and Dennis Burke posted strong scores of 4. Dennis' was good for best under 1600.

Best under 1400 with a score of 3 was won by Bill Rogers of Great Falls - he is new to state competition. The tournament success story was Dan McCourt of Missoula who, as an unrated player, scored 3½ (11th overall) for the best under 1200.

In addition to some good chess, most players enjoyed the event. When Gordon and Andy were paired in round 4 (they drew), one wit was heard to observe, "Aw, Shucks." - Report and pregame notes by Bill McBroom.

Stubberud-Jensen RD5 BD1 MODERN BIRD'S Kip has good success with line. Note that despite the pin by Black on move 3, White owns d4 and e5. 1 P-KB4 P-Q4 2 N-KB3 N-KB3 3 P-K3 B-N5 4 P-QN3 QN-Q2 5 B-N2 P-K3 6 P-B4 P-B3 7 B-K2 BxN 8 BxB B-Q3 9 O-O Q-B2 10 Pxp KPxp 11 N-B3 O-O 12 R-B1 Q-N3 13 Q-K1 Bxp 14 N-R4 Bxpch 15 KxB Q-B2ch 16 Q-N3 QxQch 17 KxQ N-K5ch 18 BxN PxB 19 N-B5 NxN 20 RxN QR-Q1 21 B-B3 P-KN3 22 R-B6 KR-K1 23 K-B4 R-K2 24 P-KN4 P-KR3 25 R-K5 RxR 26 KxR R-K1ch 27 K-B4 P-B4 28 P-R4 K-B1 29 R-Q6 P-R3 30 R-Q5 R-B1 31 Kxp K-K2 32 P-Q3 K-K3 33 R-K5ch K-Q3 34 P-R5 P-B3 35 R-Q5ch K-K3 36 P-N4 P-R4 37 RxP RxR 38 Pxr Pxp 39 K-B4 P-B4 40 P-K4 K-Q2 41 P-K5 K-K3 42 P-Q4 K-Q4 43 B-K1 K-K3 44 K-N5 K-B2 45 P-Q5 Black Resigns. 1-0

Magee-Fletcher RD4 BD10 LARSEN-NIMZO VITCH ATTACK Both players seem to co-

operate in the early middlegame to open the c file, but White claims it after an intermediate move. 1 b3 d5 2 Bb2 Nbd7 3 e3 Ngf6 4 Nf3.e6 5 Be2 Bd6 6 d3 b6 7 Nbd7 0-0 8 O-O R e8 9 c4 e5 10 cxd5 Nxd5 11 Nc4 Bb7 12 Nfd2 N5f6 13 Nxd6 cxd6 14 Nc4 Re6 15 Rc1 d5 16 Nd2 Rc8 17 Nf3 Rxc1 18 Qxc1 Rc6 19 Qb1 Qc7 20 Rc1 Rxc1+ 21 Bxc1 Ba6 22 Bb2 Ng4 23 h3 Nf6 24 Q d1 e4 25 dxe4 Bxe2 26 Qxe2 dxe4 27 Bd4 exf3 28 Qxf3 Nf8 29 g3 Qc1+ 30 Kg2 Qc2 31 Bxf6 gx f6 32 Qxf6 Qxa2 33 Qg5+ Ng6 34 Qd8+ Kg7 35 Qd4+ Kh6 36 h4 Qa5 37 Qc4 Kg7 38 Qg4 Qd5+ 39 Qe6 40 Qe2 Qxb3 41 h5 Ne5 42 f3 Qd5 43 Qf2 a5 44 f4 Qxc4+ 45 Kf1 Qh1+ 46 Qg1 Qxg1+ white Resigns. 0-1

Jorgenson-A. Shuck RD3 BD3 ALEKHINE'S DEFENSE White does not rush headlong into the typical pawn attack, so both sides mix in developing moves. 1 e4 Nf6 2 e5 Nd5 3 Nf3 d6 4 d4 Bg4 5 Be2 Nc6 6 c4 Nb6 7 b3 dxe5 8 d5 Bxf3 9 Bxf3 Nd4 10 Bb2 Nxf3 11 Qxf3 Qd6 12 0-0 f6 13 Ba3 Qd7 14 Nc3 0-0-0 15 Rfd1 e6 16 dxe6 Qxe6 17 Rxd8+ Kxd8 18 Bxf8 Rxf8 19 Qx b7 Rf7 20 Qxa7 Rd7 21 Qa3 Ke8 22 Qb2 c6 23 Rd1 Rd4 24 Rxd4 exd4 25 Qe2 Qxe2 26 Nxe2 c5 27 Kf1 Kd7 28 Ke1 Kd6 29 Kd2 Nd7 30 Nc1 Ne5 31 h3 h5 32 Nd3 g5 33 Nxe5 fxe5 34 f3 h4 35 d3 Kc6 36 a3 Kb6 37 Ke4 Kc6 38 Kd3 Kb6 39 Ke4 Kc6 40 Kd3 Drawn.  $\frac{1}{2}$ - $\frac{1}{2}$

G. Shuck-Polette RD2 BD5 KING'S GAMBIT ACCEPTED This game is a fine example of a well played gambit. White's position is superior almost from the very start. The terrible pressure on the Kingside forces Black's King to go a wandering and then be prettily mated by a pawn push. 1 e4 e5 2 f4 exf4 3 Nf3 Nf6 4 e5 Ng5 5 d4 Ne3 6 Bxe3 fxe3 7 Qd3 d6 8 Qx e3 Be7 9 exd6 Qxd6 10 Nc3 h6 11 0-0-0 Nc6 12 Bc4 0-0 13 h3 Bf6 14 Ne4 Qe7 15 Qf4 g5 16 Nxf6+ Kg7 17 Nh5+ Kg6 18 Bd3+ Kxh5 19 g4++ 1-0.

Guthrie-McBroom RD1 BD1 FROM'S GAMBIT REVERSED Black plays poorly in the opening and must castle by hand. Yet, when White picks up his Rook on move 26 he discovers that while the piece has the maximum 13 squares to go to, none are safe. That equalizes material and a draw is agreed after the exchange. 1 c4 f5 2 e4 fxe4 3 d3 exd3 4 Bxd3 Nf6 5 Bg5 Nc6 6 Bxf6 exf6 7 Qh5+ Ke7 8 Nc3 Ne5 9 Nd5+ Kd6 10 Rd1 c6 11 Nf4 Qa5+ 12 Kf1 Kc7 13 Ng6 b6 14 Nxb8 Ba6 15 Be2 Qxa2 16 Nf7 Nxc4 17 Qg4 d6 18 Nxd6 Nxd6 19 Bxa6 Qxa6+ 20 Ne2 Re8 21 h4 f5 22 Qh5 g6 23 Qf3 Ne4 24 Qd3 Qxd3 25 Rxd3 Bc5 26 Ra3 Bxa3 27 bxa3 Nd2+ Drawn.  $\frac{1}{2}$ - $\frac{1}{2}$

Aycock-Hunter RD3 BD2 LENINGRAD DUTCH REVERSED This opening, especially it's odd looking first move, was unfamiliar to most of those present. Here it leads to trapping Black's Queen. 1 d3 c5 2 c3 Nc6 3 f4 d5 4 Nf3 Bg4 5 Nbd2 Nf6 6 g3 g6 7 Bg2 Bg7 8 0-0 0-0 9 h3 B h6 10 g4 Nxb4 11 hxg4 Bxg4 12 Nh2 Bf5 13 e4 dxe4 14 dxe4 Bd7 15 e5 e6 16 Ne4 Ne7 17 Nxc5 Bc6 18 Bxc6 Nxc6 19 Ne4 Ne7 20 Ng4 Nf5 21 Nf4+ Kh8 22 Qf3 h6 23 Rad1 Qe7 24 Rd7 Bxf6 25 Nxf6 Rxd8 26 Rxe7 Nxe7 27 Rd1 Nf5 28 Rd7 Rxd7 29 Nxd7 Rd8 30 Nf6 Rd3 31 Qa8+ Black Resigns. 1-0

\*\*\*\*\*

UCCC SPRING TOURNAMENT

Mar.-Apr., 1982

1 Name	Rate	RD1	RD2	RD3	RD4	TOT
1 Mike Jensen	1787	W15	W9	W7	W3	4.0
2 R. Carpenter	1610	W17	W4	L3	W9	3.0
3 Matt Guthrie	2024	W16	W8	W2	L1	3.0
4 Dave Shughart	1320	W6	L2	W10	W7	3.0
5 Gregg Ford	1222	W10	L7	W8	W12	3.0
6 Dan McCourt	UNR	L4	W15	W11	D14	2.5
7 Dennis Burke	1558	W18	W5	L1	L4	2.0
8 Brian Hattel	1490	W13	L3	L5	X19	2.0
9 Bill McBroom	1403	W20	L1	W17	L2	2.0
10 Bob McKean	1666	L5	W18	L4	X17	2.0
11 Gary Fisher	1387	L19	W13	L6	W18	2.0
12 Donnell Hunter	1569	--	W14	W16	L5	2.0
13 Rob. Radtke	UNR	L8	L11	W15	W16	2.0
14 Lance Semenza	1160	--	L12	X20	D6	1.5
15 Tim Hovet	1241	L1	L6	L13	W20	1.0
16 M. McCafferty	1290	L3	W20	L12	L13	1.0
17 Paul Haugen	1112	L2	W19	L9	LF	1.0
18 Rob Motley	800	L7	L10	X19	L11	1.0
19 Mike Taub	UNR	W11	L17	LF	LF	1.0
20 Jason Anderson	UNR	L9	L16	LF	L15	0

Twenty players competed in the open section which was won by Mike Jensen with a perfect 4. Mike has shown great strength in recent months. In a three player under 1200 section, Ron Vande Ven, Steve Votruba and Thomas Mostad each finished with one point. Phil Reno won over the other 5 in the beginners section with a score of 4.

Report and pregame notes by Bill McBroom.

Guthrie-Carpenter RD3 BD1 ALEKHINE'S DEF. Another in the continuing series of patented Alekhine's between Matt and Romie (the first ten moves put a scant one minute on each clock). Romie plays strongly but misses a perpetual check (when Matt gives check rather than capturing the Knight) and succumbs to one of those rare center-of-the-board mates. 1 e4 Nf6 2 e5 Nd5 3 d4 d6 4 c4 Nb6 5 f4 dxe5 6 fxe5 Nc6 7 Be3 Bf5 8 N c3 e6 9 Nf3 Qd7 10 Be2 0-0-0 11 0-0 Rg4 12 Kh1 Bxf3 13 Rxf3 Nxd4 14 Bxd4 Qxd4 15 Rxf7 Qxe5 17 Qc2 Bd6 18 Raf1 Rxf7 19 Rxf7 Rf8 20 Rxf8+ Bxf8 21 Qxh7 Bb4 22 Qg8+ Kd7 23 Bd3 Qxc3 28 Qxh7 Qxd3 29 Qb4+ Kf6 30 Qf8+

Qf7+ Kd8 24 Qf3 Bxc3 25 bxc3 Ke7 26 Kg2 Na4 27 Ke5 31 Qf4++ 1-0

Jensen-Guthrie RD4 BD1 GORING GAMBIT Matt may have been expecting to use his Schliemann got a peek at the Scotch and accepted the Goring. Mike gives a good demonstration of keeping up the pressure that a well played gambit allows -- and finally a threat of mate that can only be delayed, not avoided. 1 P-K4 P-K4 2 N-KB3 N-QB3 3 P-Q4 PXP 4 P-QB3 PXP 5 NXP B-QN5 6 B-QB4 BxNch 7 PxB P-Q3 8 0-0 N-KB3 9 B-KN5 B-KN5 10 Q-N3 Q-Q2 11 P-K5 BxN 12 P-K6 PXP 13 BXP Q-Q1 14 R-K1 N-K4 15 PxB NXPch 16 K-B1 NXR 17 RxN K-B1 18 B-B7 Q-Q2 19 B-R6 Q-

B3 20 BxN PxB 21 B-Q5 22 Q-B2 Q-N4ch 23 P-B4 Q-Q2 24 R-K6 P-QB3 25 Q-B5 Q-N2 26 RxPch K-K1 27 R-B7 Q-R8ch 28 K-N2 R-N1ch 29 K-R3 Q-B6ch 30 P-B3 R-N6ch 31 PxR Black Resigns. 1-0

Carpenter-Shughart RD2 BD3 CENTER GAME Black avoids the wide open Center Game at the cost of a pawn -- which finally tells. 1 e4 e5 2 d4 d6 3 dxe5 Nc6 4 exd6 Bxd6 5 Bb5 Ne7 6 Nc3 O-O 7 Nge2 Re8 8 Rg5 Bd7 9 Qd2 Ne5 10 O-O-O a6 11 Bxd7 Qxd7 12 f4 Nc4 13 Qd4 Qc6 14 Bxe7 Bxe7 15 Nd5 Bc5 16 Qxc4 Be3+ 17 Nxe3 Qxc4 18 Nxc4 Rxe4 19 Rd2 Rxc4 20 Rhd1 g6 21 R d8+ Rxd8 22 Rxd8+ Kg7 23 g3 Kf6 24 Rd5 Re4 25 Nc3 Re1+ 26 Rd1 Re6 27 g4 Rc6 28 Re1 Re4 29 Rc6 Kd2 30 a5 a4 31 Rd6+ Ke2 32 c6 h4 33 b5 axb5 34 cxb5 Nxb5 35 Rb6 c4 36 a4 Kd3 37 Kg7 Re5 38 f6 Rd5 39 Rb7 Kc3 40 Re7 c5 41 Re3+ Rd3 42 Re4 c6 Black Resigns. 1-0

\*\*\*\*\*

The annual business meeting of the Montana Chess Association was held at 1:30pm, Sunday, May 16th, 1982 with 24 members present. Treasurer Bill Lynch reported a balance of \$273.87 compared to \$169.09 in 1981 after income of \$419.00 from memberships and \$10.00 in contributions and \$295.52 expenses for producing Montana Chess News plus \$28.70 for 500 membership cards. Then, nominations were called for the city to host the 1983 Open. John Barto nominated Great Falls, indicating that that city was anxious to have the tournament in hopes of rejuvenating chess activity there. Andy Shuck nominated Bozeman, after which the nominations were closed and the voting showed 14 in favor of Great Falls and 7 for Bozeman, so Great Falls will be the site of the 1983 Open. The election of officers followed, with these people voted in: President - John Barto, Vice President - Bill McBroom, Treasurer - Bill Lynch, Secretary - Andy Shuck and Junior Vice President - Darrin Stacey. There followed a lengthy discussion of methods to solve the problem of ties in the Montana playoff seeding too many players into the following playoff. These resolutions were eventually adopted: 1. In the event the current champion is one of the tied players he shall retain the title. (not to be implemented until 1983 as there are currently three co-champions). 2. In the event of a tie, the player with the best standing in that year's Montana Open, including tie-breaks, shall be the winner. 3. These tie break methods shall apply only to selecting the player to be seeded into the following playoff. All of the tied players will be listed as co-champions for that year. One final resolution was adopted following a discussion of the need for greater promotion of chess activities nationwide. Gordon Shuck, delegate to the USCF annual meeting, was directed to support any measures proposed there about furthering chess promotion. There was no further business and the meeting was adjourned. (Report by Bill Lynch.)

\*\*\*\*\*

Seirawan-Karpov 1 Nf3 Nf6 2 c4 e6 3 Nc3 d5 4 d4 Be7 5 Bg5 h6 6 Bh4 O-O 7 Rc1 b6 8 cxd5 Nxd5 9 Nxd5 exd5 10 Bxe7 Qxe7 11 g3 Re8 12 Rc3 Na6 13 Qa4 c5 14 Re3 Be6 15 Qxa6 cxd4 16 Rb3 Bf5 17 Bg2 Bc2 18 Nxd4 Bxb3 19 Nxb3 Rac8 20 Bf3 Rc2 21 O-O Rxb2 22 Rd1 Rd8 23 Nd4 Rd7 24 Nc6 Qe8 25 Nxa7 Rc7 26 a4 Qa8 27 Rxd5 Qxa7 28 Rd8+ Kh7 29 Qd3+ f5 30 Qxf5+ g6 31 Qe6 Black Resigns. 1-0

\*\*\*\*\*

Next Issue: LOY's Page Returns! Montana Reserve games. And, the Midsummer Open and the Montana Closed Championship reports!

\*\*\*\*\*6\*\*\*\*\*

FIRST CLASS  
PRESORTED

Montana Chess  
Association  
MONTANA CHESS NEWS  
Editor  
William M. Lynch  
1144 Harvard Ave.  
Billings MT 59102