

MONTANA CHESS NEWS

MAR.-APR. 1982

VOLUME VII - ISSUE 2

STUBBERUD SWEEPS VALENTINE - GUTHRIE IS COPPER KING

UCCC SPRING OPEN Sponsor - University-Community Chess Club April 24-25, 1982

Place: Room 362, Social Science Bldg., Univ. of Montana Campus, Missoula, MT 59801

Registration: 9:00-9:30am, April 24. USCF membership req'd, MCA memb. req'd except for new players - USCF=\$20 Adult,\$10 Junior, \$5 tournament; MCA=\$4 Adult,\$3 Jr. USCF+MCA=\$20 Adult,\$10 Jr.,\$9 Tournament. Entry Fees=\$5 advance,\$8 at door. Advance entries to address below. New players free.

Rounds: 5 Round Swiss System. 9:30am,2:00pm,7:00pm / 9:00am,2:00pm.

Time Control: 30 moves / 90 minutes, then 25 moves / hour thereafter.

Prizes: Trophies 1st, 2nd, 3rd, Best Under 1600, 1400, 1200.

Director: Bill McBroom, 2321 Raymond, Missoula, MT 59802.

Notes: Limited Smoking.

7TH MONTANA STATE OPEN Sponsor - Montana Chess Assoc. May 15-16, 1982

Place: Conference Room, Neighborhood Center Bldg., 201 S. Last Chance Gulch, Helena, MT 59601. Downtown historic district next to Library.

Registration: 9:00-9:30am, May 15. USCF & MCA membership req'd, rates in above announcement. Entry Fees = OPEN \$10, RESERVE \$8, BEGINNERS \$3 - memberships not required for beginners. Advance entries to address below.

Rounds: 5 Round Swiss System all sections. 9:30am,2:00pm,7:00pm / 9:00am,2:30pm.

Time Control: 40 moves / 2 hours, then 25 moves / hour thereafter.

Prizes: 1st,2nd,3rd each section - Trophies and/or \$\$ according to entries.

Director: Bill Lynch, Andy Shuck, Bill McBroom. Kip Stubberud, 1321 Boulder Ave., Helena, MT 59601.

Notes: MCA business meeting 1:30pm May 16 - election of officers and determination of 1983 Open Tournament site. Speed Tournament as time permits.

WYOMING OPEN Sponsor - Casper Chess Club May 22-23, 1982

Place: Ramada Inn, I-25 & Center, Casper, WY 82601. 307-235-5713.

Registration: 8:00-9:00am, May 22. USCF membership required, \$20 Adult, \$10 Jr., \$5 Tournament. Entry Fees = In advance - OPEN \$15 Adult, \$7.50 Jr.; RESERVE (open to 1599 and below) \$15 Adult, \$5 Jr. All \$5 extra at the door. Advance entries to the address below.

Rounds: OPEN - 5 Round Swiss System. 10:00am,2:00pm,6:00pm / 9:30am,2:30pm.
RESERVE - 6 Round Swiss, 10:00am,2:00pm,6:00pm / 9:30am,1:30am,5:30am.

Time Control: OPEN - 40/90 Rounds 1&2, 40/2 hours Rounds 3,4&5.
RESERVE - 40 moves / 90 minutes all rounds.

Prizes: 1st OPEN = \$100, 1st RESERVE = \$50, additional \$\$ prizes according to entries, Trophies to 1st Wyoming Player and 1st Wyoming Junior.

Director: Bruce Johnson, Casper Chess Club, 839 Elma St., Casper, WY 82601.

P1 Name	Rating	RD1	RD2	RD3	RD4	RD5	Tot
1 Kip Stubberud	1913	W27	W22	W8	W2	W7	5.0
2 Matt Guthrie	2013	W14	W19	W5	L1	W10	4.0
3 Derrick Watson	1260	W10	L6	W16	W19	W9	4.0
4 Bob McKean	1534	W24	L7	W18	W20	W8	4.0
Andy Shuck	1772	W28	W13	L2	W12	D6	3.5
Tom Booth	1584	W32	W3	D11	D7	D5	3.5
7 Mike Jensen	1776	W17	W4	D9	D6	L1	3.0
8 Gordon Shuck	1737	W18	W15	L1	W13	L4	3.0
9 Roger White	1638	W23	W12	D7	D11	L3	3.0
10 Romie Carpenter	1601	L3	W23	W14	W24	L2	3.0
11 Gary Wendel	1500	D29	W20	D6	D9	D18	3.0
12 Lyle Petersen	1429	W21	L9	W26	L5	W20	3.0
13 Brian Hattel	1444	W30	L5	W25	L8	W26	3.0
14 Bill McBroom	1390	L2	W33	L10	W31	W19	3.0
15 James Bush	1432	W31	L8	L20	W25	W21	3.0
16 Dan Britt	1454	L20	W32	L3	W23	W24	3.0
17 John Hay	1360	L7	W30	L19	W33	W22	3.0
18 Ron Erickson	1312	L8	W21	L4	W28	D11	2.5
19 Duane Hildenstab	1579	W33	L2	W17	L3	L14	2.0
20 Gregg Ford	UNR	W16	L11	W15	L4	L12	2.0
21 Stewart Riley	UNR	L12	L18	W27	W29	L15	2.0
22 Ray Jorgenson	1571	W25	L1	D28	D26	L17	2.0
23 Larry Austin	1300	L9	L10	W30	L16	W31	2.0
24 Steve Olson	1175	L4	Bye	W29	L10	L16	2.0
25 Sam Stem	1189	L22	W27	L13	L15	W32	2.0
26 Coyle Long	1560	½By	W29	L12	D22	L13	2.0
27 Gary Fisher	1387	L1	L25	L21	W30	W28	2.0
28 Robert Taylor	1347	L5	W31	D22	L18	L27	1.5
29 Sherwood Moore	990	D11	L26	L24	L21	Bye	1.5
30 Robert Radtke	UNR	L13	L17	L23	L27	W33	1.0
Lance Semenza	UNR	L15	L28	W32	L14	L23	1.0
32 Matt McCafferty	1246	L6	L16	L31	Bye	L25	1.0
33 Tim Hovet	1196	L19	L14	Bye	L17	L30	1.0

the 2nd Valentine Open. He played well throughout and as can be seen from his game with Matt Guthrie, anyone who allows Kip to get in to his Dragon is inviting a loss (it was virtually a flawless game on Kip's part.

Matt Guthrie's second place was expected as soon as he lost to Kip in the 4th round. While Romie Carpenter gave him a tussel in the 5th round when Matt tried the Alekhine (sort of a standing joke between the two of them, as Romie played the Alekhine on Matt in a recent rated game) Matt's ability to find good moves over the board suggests that he well deserves his status as a candidate master.

With no intention of detracting from the accomplishments of Kip or Matt, in a sense the tournament really belonged to Derrick Watson of Missoula. Derrick's score of 4 (good for 3rd over all) is outstanding for an under 1300 player. He won't stay at that level long as he is doing well in the UCCC club tournaments. His games are not without inaccuracies, But they are all worth looking over.

Bob McKean's score of 4 gave him the best under 1600. His next published rating should be close to 1700. Bill McBroom got his first ever plus

score in a five rounder -- enough for the best under 1400. Gregg Ford, a new player in Missoula, won the award for best under 1200. As his game with Dan Britt (himself a strong tournament player) shows, Gregg already knows how to keep the pressure.

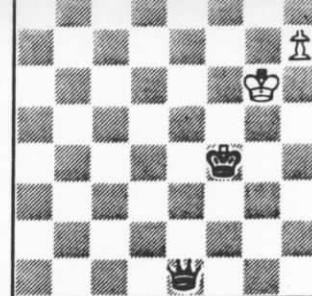
The Missoula players always enjoy the presence of those who come from out of town. As usual, Gordon and Andy Shuck gave everyone a real fight. The Missoula players were charmed by Steve Olson. You folks in Helena who are working with him have got a winner there. Kip, Bill, Jim and Matt -- watch out. --- Report by Bill McBroom

RD1 BD13 Gregg Ford-Dan Britt PIRC 1P-Q4 P-KN3 2 P-K4 P-Q3 3 N-KB3 N-KB3 4 B-K3 NXP 5 B-Q3 N-KB3 6 N-QB3 B-N2 7 O-O P-QB3 8 R-K1 P-Q4 9 Q-Q2 P-KR3 10 R-K2 QN-Q2 11 QR-K1 N-N5 12 B-B4 O-O 13 P-R3 N5-B3 14 B(B4)XP R-K1 15 BxB KxB 16 N-R4 R-R1 17 Q-N5 N-B1 18 RXP R-R4 19 Q-N3 K-R3 20 RXP R-N4 21 Q-B4 BXP 22 QxN BXP 23 Q-R8ch Black Resigns. 1-0

RD1 BD7 Derrick Watson-Romie Carpenter ALEKHINE'S 1 e4 Nf6 2 e5 Nd5 3 d4 d6 4 c4 Nb6 5 Nf3 Bg4 6 Be2 Nc6 7 Be3 Qd7 8 Nbd2 Bxf3 9 Nxf3 O-O-O 10 O-O dxe5 11 dxe5 Qe6 12 Qc2 Nxe5 13 Nxe5 Qxe5 14 Rad1 Rxd1 15 Rxd1 e6 16 Qd3 Bc5 17 Bxc5 Qxc5 18 Qd4 Qxd4 19 Rxd4 Rd8 20 Rxd8+ Rxd8 21 b3 Kd7 22 f4 f5 23 Bf3 c6 24 c5 Nd5 25 Bxd5 cxd5 26 a4 Kc6 27 b4 b6 28 cxb6 axb6 29 Kf2 d4 30 Ke2 g5 31 Kd3 Kd5 32 a5 gxf4 33 a6 Kc6 34 a7 Kb7 35 Kxd4 h5 36 Ke5 h4 37 h3 Kxa7 38 b5 Kb7 39 Kxe6 Lc7 40 Kxf5 Kd6 41 Kxf4 Kc5 42 g4 hxg3 43 Kxg3 Kxb5 44 h4 Kc4 45 h5 b5 46 h6 Black Resigns. 1-0

RD2 BD2 Ray Jorgenson-Kip Stubberud SICILIAN 1 P-K4 P-QB4 2 N-KB3 P-Q3 3 P-Q4 PXP 4 NXP F 3 5 N-QB3 B-N2 6 B-K3 N-QB3 7 B-QB4 B-Q2 8 Q-Q2 R-B1 9 P-B3 NxN 10 BXPch?? KxB 11 BxN Q-N4 12 BxB KxB 13 P-B4 N-B3 14 R-Q1 B-N5 15 P-K5 PXP 16 PXP QXPch 17 N-K2 KR-Q1 White Resigns. 0-1

K5 P-QB4 4 P-QB3 N-QB3 5 N-B3 Q-N3 6 Q-N3 Q-B2 7 B-K3 KN-K2 8 B-K2 N-B4 9 Q-Q1 PXP 10 BXP N4xB 11 PxN Q-N3 12 Q-Q2 B-N5 13 N-B3 B-Q2 14 P-QR3 BxN 15 PxB N-R4 16 Q-B2 R-QB1 17 O-O N-B5 18 BxN RxB 19 N-Q2 R-B2 20 QR-N1 Q-R4 21 KR-B1 B-R5 22 Q-N2 O-O 23 Q-N4 Q-R3 24 P-B4 KR-B1 25 P-B5 P-N3 26 R-B3 PXP 27 RXP RXP 28 PXR P-R3 29 R-QB1 B-N4 30 N-B3 B-K7 31 N-Q4 B-B5 32 P-B5 Q-N3 33 QxQ PxQ 34 P-B4 K-B1 35 K-B2 K-K2 36 K3 P-N3 37 R-QN1 P-QN4 38 NXP RXP 39 P-R4 R-N3 40 N-B3 RXP 41 NXR Q2 42 K-Q4 K-B3 43 N-Q2 B-K7 44 K-B3 B-Q1 45 N-N3 K-N3 46 K-N4 BxN 47 KxB K-R4 48 K-R3 P-R4 49 P-N3 P-R5 50 P-N4 P-Q5 51 K-N3 P-Q6 52 K-B3 KXP 53 KXP K-N6 54 P-R3 K-N5 55 K-Q4 K-N4 56 K-K4 K-B4 57 P-B5 NPXPch 58 NPXP K-B5 59 PXP PXP 60 K-B4 K-Q4 61 K-N4 KXP 62 KXP K-B5 63 K-R5 P-K4 64 K-N6 P-K5 65 P-R4 P-K6 66 P-R5 P-K7 67 P-R6 P-K8=Q 68 P-R7 DIAGRAM Q-N6ch? (68...Q-K4! and 69...Q-R1 wins) 69 K-B7 K-B4 70 P-R8=Q Q-B2ch 71 K-B8 Q-Q1ch 72 K-N7 Q-B3ch 73 K-N8 Q-N4ch 74 Q-N7 Draw. $\frac{1}{2}$ - $\frac{1}{2}$



RD3 BD13 Steve Olson-Sherwood Moore QUEEN'S GAMBIT DECLINED 1 P-Q4 P-Q4 2 P-QB4 P-QB3 3 N-KB3 N-KB3 4 B-N5 P-KR3 5 BxN NPxB 6 P-K3 B-B4 7 N-QB3 P-K3 8 B-K2 B-Q3 9 Q-N3 P-N3 10 P-KR3 R-N1 11 N-R4 B-R2 12 PXP Q-K2 13 PxBP P-B4 14 N-B3 Q-B2 15 N-N5 QXP 16 NXR RXP 17 B-N5 Q-Q2 18 BxQch NxB 19 R-B1 R-QR1 20 P-N3 K-K2 21 O-O P-B5 22 KPXP B-B4 23 P-R4 BXP 24 R-B4 R-N2 25 P-Q5 QR-KN1 26 RxB B-R6 27 R-K1 N-B1 28 PXP NXP 29 Q-N4ch K-Q1 30 QXPch K-Q2 31 N-Q4 RXPch 32 PXR RXPch 33 K-R2 R-N7ch 34 KxB R-N3 35 Q-N5ch K-K2 36 RXPch B1.Res. 1-0

RD4 BD1 Matt Guthrie-Kip Stubberud SICILIAN 1 e4 c5 2 Nf3 d6 3 d4 cxd4 4 Nxd4 g6 5 Nc3 Bg7 6 Be3 Nc6 7 Bc4 Bd7 8 Qd2 Rc8 9 Bb3 Qa5 10 O-O-O Nf6 11 f3 Ne5 12 Bh6 O-O 13 Kb1 Bxh6 14 Qxh6 Nc4 15 Rd3 Ne5 16 Rd1 Nc4 17 N4e2 Be6 18 Rd4 Nc5 19 Nd5 Bxd5 20 exd5 Rfc8 21 Rhd1 Rxd5 22 Rxd5 Nxd5 23 Rd4 Qe1+ 24 Nc1 N5e3 25 Qf4 e5 26 Rxc4 Nxc4 White Resigns. 0-1

RD5 BD7 Ray Jorgenson-John Hay SICILIAN 1 P-K4 P-QB4 2 N-KB3 P-Q3 3 P-Q4 PXP 4 NXP N-KB3 5 N-QB3 P-QR3 6 B-K2 P-K3 7 B-K3 Q-B2 8 Q-Q2 N-B3 9 P-KR3 P-QN4 10 B-B3 NxB 11 BxN P-K4 12 B-K3 B-K2 13 B-N5 B-N2 14 QR-Q1 QR-Q1 15 O-O O-O 16 BxN BxB 17 N-Q5 BxN 18 PxB KR-K1 19 P-QB3 R-K2 20 KR-K1 QR-K1 21 Q-B2 P-KN3 22 R-K4 B-N2 23 P-KN4 B-R3 24 K-R1 R-KB1 25 R-KN1 Q-B4 26 P-N5 B-N2 27 R-K2 P-B4 28 PXPp. RXP 29 B-K4 Q-B1 30 K-R2 B-R3 31 Q-Q3 Q-KB1 32 P-KB3 B-R5ch 33 K-R1 Q-R3 34 K-N2 Q-R5 35 R-R1 R/K2-KB2 36 K-B1 B-N6 37 R-N2 P-N4 38 K-K2 P-N5 39 BXPch RxB 40 BPXP R-B7ch 41 RXP BXR 42 Q-N6ch R-N2 43 Q-K6ch R-KB2 44 R-K-N2 45 QXP Q-N3 46 Q-K6 Q-K6ch 47 K-Q1 Q-Q6ch White Resigns. 0-1

RD5 BD5 Derrick Watson-Roger White SICILIAN 1 P-K4 P-QB4 2 N-KB3 P-Q3 3 P-Q4 PXP 4 NXP N-QB3 5 B-QN5 B-Q2 6 N-QB3 P-KN3 7 B-K3 B-N2 8 O-O NxB 9 BxBch QxB 10 BxN N-KB3 11 Q-K2 O-O 12 QR-Q1 Q-B3 13 P-K5 PXP 14 BXP P-QR3 15 R-Q3 QR-Q1 16 KR-Q1 RXP 17 QXR N-KR4 18 BxB NxB 19 Q-Q7 Q-B1 20 QxQ RxQ 21 R-Q7 P-QN4 22 RXP P-N5 23 N-Q5 K-B1 24 R-B7 R-Q1 25 N-K3 R-R1 26 P-KR3 P-QR4 27 P-R3 N-K3 28 R-B4 PXP 29 PXP R-N1 30 K-R2 R-N4 31 P-KN4 P-KR4 32 P-B4 PXP 33 PXP R-B4 34 RXP NXR 35 P-B5 PXP 36 PXP K-K2 37 K-N3 N-K5ch 38 K-B4 N-B6 39 K-K5 P-R5 40 N-Q5ch NxB 41 KxB K-Q2 42 P-B4 K-B2 43 K-B5 K-Q2 44 K-N6 K-B1 45 P-B5 P-B3 46 P-B6 K-N1 47 K-N5 K-B2 48 K-B5 K-B1 49 K-Q6 K-Q1 50 P-B7ch K-B1 51 K-K7 KXP 52 KXP K-Q1 Black Resigns. 1-0

RD5 BD3 Andy Shuck-Tom Booth RETI 1 N-KB3 N-KB3 2 P-B4 P-K3 3 P-KN3 P-QN3 4 B-N2 B-N2 5 O-O P-B4 6 P-N3 B-K2 7 B-N2 O-O 8 N-B3 P-Q3 9 R-B1 QN-Q2 10 P-Q4 P-QR3 11 Q-Q2 N-K5 12 NxN BxN 13 KR-Q1 R-N1 14 Q-K3 N-KB3 15 PxBP BxN 16 PxBP BxB 17 PxB QXP 18 BxN QxB 19 KxB Q-N7 20 R-Q6 P-KR3 21 R-K1 QxRP 22 RXP Q-R4 23 RXP RXP 24 R-Q1 Q-N5 25 R-Q3 P-QR4 26 Q-B3 Q-N2 27 QxQ RxQ 28 P-B5 R-B2 29 R-B3 K-B1 30 P-K4 K-K2 31 P-B4 K-Q2 32 K-B3 K-B3 33 K-K3 K-N4 34 K-Q4 K-N5 35 P-B6 K-N4 36 P-B5 RXP 37 RXP KXR 38 PXP PXP 39 K-K5 K-B4 40 KXP K-N5 41 K-B7 KXP 42 P-K5 P-R5 43 P-K6 P-R6 44 P-K7 P-R7 45 P-K8=Q P-R8=Q 46 Q-N4ch K-B7 47 Q-B5ch K-Q7 Draw. $\frac{1}{2}$ - $\frac{1}{2}$

RD5 BD2 Romie Carpenter-Matt Guthrie ALEKHINE 1 e4 Nf6 2 e5 Nd5 3 c4 Nb6 4 d4 d6 5 exd6 cxd6 6 Nf3 g6 7 Nc3 Bg7 8 Be3 Bg4 9 Be2 Nc6 10 b3 e5 11 Rc1 O-O 12 O-O Qc8 13 Nb5 Qb8 14 Nxd6 Qxd6 15 c5 Qe7 16 cxb6 Bxf3 17 d5 Bxe2 18 Qxe2 Nd8 19 Bc5 Qf6 20 Bxf8 Bxf8 21 bxa7 Bh6 22 Rcd1 Rxa7 23 d6 Nc6 24 d7 Ra8 25 Qb5 Rb8 26 a4 Nd4 27 Rxd4 exd4 28 Re1 Rd8 29 Re8+ Kg7 30 Rxd8 Qxd8 31 Qe5+ Kf8 32 Qd6+ Kg8 33 Qxd4 Bg5 34 Qd5 b6 35 g3 Be7 36 Kg2 Kf8 37 Qd4 Bc5 38 Qh8+ Ke7 39 Qxh7 Qxd7 40 Qh4+ Kd6 41 Qf4+ Kc6 42 Qf3+ Qd5 43 h4 Qxf3+ 44 Kxf3 45 g4 Bd4 46 h5 gxh5 47 gxh5 Kc5 48 h6 Kb4 49 h7 Kxb3 50 Kg4 Kxa4 51 f4 b5 52 f5 b4 53 Kg5 Bh8 White Resigns. 0-1

6TH COPPER KINGS OPEN

March 13-14, 1982

P1 Name	Rating	RD1	RD2	RD3	RD4	RD5	TOT
1 Matt Guthrie	2056	W6	W3	W5	W2	W4	5.0
2 Marc Lynn	2178	W12	W4	W7	L1	W5	4.0
3 Kip Stubberud	1929	D10	L1	D6	W9	W8	3.0
4 Bill Wraith	1611	W9	L2	W8	W7	L1	3.0
5 Gordon Shuck	1711	W11	W9	L1	D8	L2	2.5
6 Fred Betz	1652	L1	W12	D3	D10	D7	2.5
7 Tom Booth	1564	D8	W10	L2	L4	D6	2.0
8 Pat Hauptman	1707	D7	W11	L4	D5	L3	2.0
9 Andy Shuck	1772	L4	L5	W11	L3	W12	2.0
10 Roger White	1638	D3	L7	W12	D6	L11	2.0
11 Ray Jorgenson	1573	L5	L8	L9	W12	W10	2.0
12 Bob McKean	1671	L2	L6	L10	L11	L9	0

P1 Name	Rating	RD1	RD2	RD3	RD4	RD5	TOT
1 Sam Stem	1185	Bye	W12	W4	D3	D2	4.0
2 James McCormack	UNR	W7	L4	W5	W6	D1	3.5
3 Gary Wendel	1500	W10	L7	W13	D1	W4	3.5
4 James Bush	1430	W13	W2	L1	W10	L3	3.0
5 Robert Taylor	1347	L6	W9	L2	W12	W8	3.0
6 Mark Hagenston	UNR	W5	W8	L11	L2	W10	3.0
7 Larry Austin	1295	L2	W3	L10	W14	W11	3.0
8 Dan Polette	1298	W14	L6	D9	W11	L5	2.5
9 Lyle Petersen	1453	L12	L5	D8	W13	W14	2.5
10 Mark Wood	1264	L3	W14	W7	L4	L6	2.0
11 James Chester	1519	1/2By	1/2By	W6	L8	L7	2.0
12 Matt Janke	1258	W9	L1	L14	L5	D13	1.5
13 Chuck Borland	1250	L4	Bye	L3	L9	D12	1.5
14 Coyle Long	1560	L8	L10	W12	L7	L9	1.0

P1 Name	Rating	RD1	RD2	RD3	RD4	RD5	TOT
1 M. Vladdan	NON	W10	D11	W6	W2	W4	4.5
2 Chuck Hansacker	NON	W9	W4	D5	L1	W8	3.5
3 Jim Cramer	NON	L4	W8	D7	Bye	W5	3.5
4 Brian Alley	NON	W3	L2	W10	W6	L1	3.0
5 Minh Nygen	NON	Bye	D9	D2	W7	L3	3.0
6 Mike Poole	(1416)	W11	W7	L1	L4	W9	3.0
7 Andrew Logie	NON	W8	L6	D3	L5	Bye	2.5
8 Long Nguyen	NON	L7	L3	Bye	W9	L2	2.0
9 Chuck Carlson	NON	L2	D5	W11	L8	L6	1.5
10 Pete McKeon	(1290)	L1	Bye	L4	WD	WD	1.0
11 Mike Johnson	NON	L6	D1	LF	WD	WD	0.5

Prizes: Guthrie - T+\$30, Lynn - T+\$15, Wraith, Stubberud - \$5. Stem - T+\$30, McCormack - T+\$12.50, Wendel - \$12.50. Vladdan - T+\$7, Hansacker - T+\$4, Cramer - \$2. Bottom section nonrated.

8 fxe5 Nd5 9 Nf3 0-0 10 h3 Nc6 11 Bc4 Nxc3 12 Bxc3 e6 13 0-0 Bd7 14 Ba3 Re8 15 Qd2 Bf8 16 Bxf8 Nxf8 17 Qh6 f6 18 exf6 Qxf6 19 Ng5 Qe7 20 Rae1 Rxf1+ 21 Rxf1 Nd8 22 Nxh7 Qxh7 23 Rf8 ++ Mate. 1-0

RD3 BDB4 Mark Hagenston-Jim Chester PIRC 1 P-Q4 N-KB3 2 P-QB4 P-KN3 3 N-QB3 B-N2 4 P-K4 P-Q3 5 KN-K2 N-Q2 6 P-KB3 P-QB4 7 B-K3 Q-QN3 8 Q-Q2 PXP 9 NXP N-QB4 10 N-B2 P-QR4 11 P-KN4 Q-B3 12 B-Q4 0-0 13 B-KN2 B-K3 14 P-N5 N-Q2 15 BxB KxB 16 Q-Q4ch P-B3 17 P-QN4 RXP 18 NXP Q-B2 19 N4-Q5 BxN 20 NxB Q-R4ch 21 K-K2 P-K4 22 PXPch NXP 23 Q-N2 NxN 24 BPxN Q-R3 25 K-Q1 N-Q6 26 Q-QB2 QR-B1 27 Q-Q2 Q-R5ch 28 K-K2 R-B7 29 KxN Q-B5ch 30 K-K3 RxQ 31 KxR Q-Q5ch 32 K-K2 R-QB1 33 QR-B1 Q-N7ch 34 K-Q3 RxR White Resigns. 0-1

Note: Tie break points have been intentionally deleted from all crosstables to provide more space for games and news - ED.

RD1 BDB6 James McCormack-Larry Austin SICILIAN 1 P-K4 P-QB4 2 N-KB3 P-Q3 3 B-B4 N-KB3 4 N-B3 P-K3 5 P-Q3 N-B3 6 B-K3 B-K2 7 0-0 0-0 8 Q-Q2 P-QR3 9 P-QR3 P-QN4 10 B-R2 Q-N3 11 P-QN4 N-Q5 12 PXP Nxnch 13 Pxn PXP 14 QR-QN1 Q-B2 15 K-R1 P-N5 16 PXP PXP 17 N-K2 P-QR4 18 R-N1 R-Q1 19 B-R6 P-N3 20 N-B4 R-R3 21 P-R4 R-B3 22 B-N3 B-R3 23 P-R5 B-B5 24 PXP RXP 25 NxnP Pxn 26 Rx Pch K-B2 27 R-N7ch K-K1 28 B-R4 P-K4 29 BxRch QxB 30 Q-K3 B-B4 31 Q-N5 Q-K3 32 Q-N6ch K-B1 33 R-B7Mate. 1-0
Jim was awarded the tournament "brilliant prize" for this game.

RD2 BDA2 Kip Stubberud-Matt Guthrie PIRC 1 d4 g6 2 e4 d6 3 Nc3 Nf6 4 f3 c6 5 Be3 Bg7 6 Qd2 0-0 7 h4 h5 8 Bc4 b5 9 Bb3 Nbd7 10 Bh6 Nb6 11 g4 Nc4 12 Bxc4 bxc4 13 0-0-0 Rb8 14 Rf1 Qb6 15 Nd1 hxg4 16 h5 c3 17 Qe3 cxb2+ 18 Kb1 Be6 19 Nc3 Nxe4 20 Qxe4 Bxd4 21 Nge2 Bxc3 22 Nxc3 Bf5 23 Qxe7 Qd4 24 Qe3 Qxe3 25 Bxe3 gxf3 26 hxg6 fxg6 27 Rx f3 Bxc2+ 28 Kxc2 Rxf3 29 Bxa7 Rxc3+ 30 Kxc3 b1=Q 31 Rxb1 Rxb1 32 Bd4 Kf7 33 a4 Ke6 34 Kc2 Rb4 35 Kc3 Rxa4 36 Bg7 g5 37 Kd3 Kd5 38 Ke3 Ra3+ 39 Kd2 Ke4 40 Ke1 Ra2 41 Kf1 Kf3 42 Kg1 g4 43 Bd4 g3 44 Kh1 Rd2 45 Bg1 c5 46 Bh2 g2+ 47 Kg1 Rd1++ 0-1

RD2 BDB4 Mark Wood-Coyle Long RUY LOPEZ 1 P-K4 P-K4 2 N-KB3 N-QB3 3 B-N5 B-Q3 4 P-Q4 PXP 5 NXP N-K4 6 0-0 N-K2 7 N-QB3 P-QB3 8 B-Q3 Q-B2 9 P-B4 NxB 10 Pxn 0-0 11 Q-N4 B-B4 12 B-K3 P-Q4 13 Q-N3 PXP 14 PXP B-Q2 15 Q-N5 BxN 16 BxB P-B3 17 Q-N3 P-QB4 18 B-K3 QR-Q1 19 QR-B1 P-QN3 20 P-QR4 B-B3 21 Q-N4 R-Q6 22 KR-K1 B-Q2 23 P-B5 P-N3 24 B-B4 Q-B1 25 QR-Q1 RxR 26 RxR P-KR4 27 Q-N3 P-KN4 28 BXP K-B2 29 Q-R4 PxB 30 QxRPch K-B3 31 Q-R6ch K-K4 32 Q-N7ch K-B5 33 R-B1ch K-N5 34 P-R3ch K-R5 35 Q-R6ch Black Resigns, 1-0

RD3 BDC2 Milosevic Vladdan-Mike Poole SICILIAN 1 e4 c5 2 c3 d6 3 d4 cxd4 4 cxd4 Nf6 5 Nc3 g6 6 f4 Bg7 7 e5 dxe5 e6 13 0-0 Bd7 14 Ba3 Re8 15 Qd2 Bf8 16 Bxf8 Nxf8 17 Qh6 f6 18 exf6 Qxf6 19 Ng5 Qe7 20 Rae1 Rxf1+ 21 Rxf1 Nd8 22 Nxh7 Qxh7 23 Rf8 ++ Mate. 1-0

UCCG 1ST WINTER OPEN

Jan.-Feb., 1982

P1 Name	Rate	RD1	RD2	RD3	RD4	TOT
1 Matt Guthrie	2056	W14	W3	W5	W4	4.0
2 Bob McKean	1641	W10	D4	W8	W6	3.5
3 Dennis Burke	1558	W8	L1	W12	W5	3.0
4 Mike Jensen	1821	W12	D2	W11	L1	2.5
5 R. Carpenter	1638	W13	W6	L1	L3	2.0
6 Dan Britt	1471	W9	L5	W10	L2	2.0
7 Gary Fisher	1387	L11	W13	F--	W14	2.0
8 Larry Austin	1300	L3	W11	L2	W12	2.0
9 M. McCafferty	1290	L6	L12	X--	W13	2.0
10 Derrick Watson	1260	L2	W14	L6	W11	2.0
11 Brian Hattel	1419	W7	L8	L4	L10	1.0
12 John Hay	1396	L4	W9	L3	L8	1.0
13 Robert Taylor	1347	L5	L7	W14	L9	1.0
14 Bill McBroom	1403	L1	L10	L13	L7	0

P1 Name	Rate	RD1	RD2	RD3	RD4	TOT
1 F. Shafizadeh	NON	Bye	W7	W5	W6	4.0
2 Steve Votruba	991	W7	D8	D3	W5	3.0
3 Sam Stem	1185	L5	W9	D2	W8	2.5
4 Robert Motley	NON	L8	Bye	D7	X--	2.5
5 Gregg Ford	1211	W3	W6	L1	L2	2.0
6 Paul Haugen	NON	W9	L5	W8	L1	2.0
7 Sherwood Moore	990	L2	L1	D4	Bye	1.5
8 James Fletcher	NON	W4	D2	L6	L3	1.5
9 Stewart Justman	NON	L6	L3	Bye	F--	1.0

BILLINGS WINTER OPEN

Feb., 1982

P1 Name	Rate	RD1	RD2	RD3	RD4	TOT
Pat Hauptman	1712	W5	W3	W2	W6	4.0
2 Bill Lynch	1867	W6	W4	L1	W3	3.0
3 Dallon Thomas	1547	W5	L1	W6	L2	2.0
4 Jerry Stump	1526	W9	L2	W5	--	2.0
5 Chuck Gonzales	NON	L3	W7	L4	Bye	2.0
6 Ed Nash	1464	L2	W8	L3	L1	1.0
7 Chuck Chapman	1436	L1	L5	W8	--	1.0
8 Jim Felt	NON	Bye	L6	L7	--	1.0
9 Bob Shaffer	NON	L4	WD	--	--	0

1ST WINTER Dan Britt-Bob McKean KING'S IND

ATTACK 1 N-KB3 N-KB3 2 P-Q3 P-KN3 3 P-KN3 P-Q3 4 B-N2 B-N5 5 N-Q2 B-N2 6 N-Q4 Q-B1 7 P-KR3 B-Q2 8 P-QB3 P-K4 9 N4-B3 N-B3 10 N-QB4 O-0 11 N-K3 N-K2 12 N-KN4 N-R4 13 N-N5 P-KB4 14 Q-N3ch P-Q4 15 BxP NxP 16 QxNch K-R1 17 NxKP BxN 18 QxBch N-N2 19 N-KB3 R-K1 20 Q-Q4 P-QB4 21 Q-KB6 R-K3 22 Q-R4 Q-K1 23 P-K3 N-K4 24 N-N5 R-Q3 25 P-Q4 PxP 26 PxP R-Q1 27 P-QN3 B-B3 28 O-0 P-KR3 29 B-N2 K-N1 30 P-N4 PxN 31 QxP N-N2 32 P-B3 K-B2 33 NPxP PxP 34 K-B2 R-N3 35 Q-B4 K-N1 36 R-KN1 R-Q3 37 R/R1-Q1 B-Q4 38 R-N3 R/Q3-N3 39 P-KR4 N-R4 40 RxR RxR 41 QxP BxP 42 QxB R-B3 43 R-N1 K-B2 44 P-Q5 RxQ 45 KxR Q-N4ch 46 K-N4 N-B3ch 47 K-B3 QxPch Time Forfeit White. 0-1

1ST WINTER Mike Jensen-Matt Guthrie SICILIAN 1 e4 c5 2 Nf3 d6 3 d4 cxd4 4 Nxd4 Nf6 5 Nc3 a6 6 Bc4 e6 7 Bb3 b5 8 O-0 Be7 9 f4 O-0 10 e5 dxe5 11 fxe5 Nfd7 12 Qh5 Nc6 13 Nxc6 Qb6+ 14 Be3 Qxc6 15 Rf3 Bc5 16 Re1 f6 17 Rh3 Nxe5 18 Qxh7+ Kf7 19 Rg3 Rf8 20 Kh1 Bxe3 21 R1xe3 Qd6 22 Re1 Bb7 23 R3e3 Rh8 24 Qf5 Rxh2+ 25 Kxh2 Nf3+ 26 Kh3 Rh8+ White Resigns. 0-1

BWO Pat Hauptman-Bill Lynch QP? 1 d4 d5 2 f4 Nf6 3 e3 e6 4 Nf3 c5 5 c3 Nc6 6 Be2 Bd7 7 Rc8 8 Ne5 Bd6 9 Nbd2 O-0 10 Ndf3 Ne4 11 Nxd7 Qxd7 12 Ne5 Qc7 13 Qa4 Ne7 14 Bf3 f6 15 Na3 g5 16 Bxe4 dxe4 17 Nxc5 Bxc5 18 dxc5 Qxc5 19 Qxe4 e5 20 Qxb7 exf4 21 Kh1 Qc4 22 Qb3 fxe3 23 Bxe3 Qxb3 24 axb3 Nc6 25 Bxa7 Nxa7 26 Rxb7 R4d8 27 b4 Rd2 28 Ra2 Re8 29 h3 R8e2 30 Rg1 f5 31 b5 f4 32 R2a1 Rxb2 33 Rab1 f3 34 Rxb2 Rxb2 35 c4 f2 36 Rf1 Rb4 37 Rxf2 Rxc4 38 Rb2 Rc8 39 b6 Kf7 40 b7 Rb8 41 Rb6 Ke7 42 Kh6 Black Resigns. 1-0

UCCG 2ND WINTER OPEN

Feb.-Mar., 1982

P1 Name	Rate	RD1	RD2	RD3	RD4	TOT
1 Mike Jensen	1776	W11	W16	W8	W2	4.0
2 Matt Guthrie	2013	W20	W3	W6	L1	3.0
3 Bill McBroom	1390	W13	L2	W9	W5	3.0
4 Bob McKean	1534	W7	L5	W15	W11	3.0
5 Gregg Ford	UNR	W17	W4	W16	L3	3.0
6 Dennis Burke	1536	W18	W9	L2	W8	3.0
7 M. McCafferty	1246	L4	W17	W12	W15	3.0
8 John Hay	1360	W14	W10	L1	L6	2.0
9 Tim Hovet	1196	W12	L6	L3	Bye	2.0
10 R. Carpenter	1601	W15	L8	L11	W18	2.0
11 Ron Erickson	1312	L1	W19	W10	F--	2.0
12 Dan Britt	1454	L9	W18	L7	W19	2.0
13 Jason Anderson	NON	L3	W20	L18	W17	2.0
14 Dan McCourt	NON	L8	L15	W20	W16	2.0
15 Larry Austin	1300	L10	W14	L4	L7	1.0
16 Gary Fisher	1387	W19	L1	L5	L14	1.0
17 Brian Hattel	1444	L5	L7	W19	L13	1.0
18 Derrick Watson	1260	L6	L12	W14	L10	1.0
19 John Ortiz	NON	L16	L11	L17	F--	0
20 Robert Taylor	1347	L2	F--	F--	WD	0

P1 Name	Rate	1	2	3	4	5	6	TOT
1 Steve Votruba	991	x	1	1	1	0	1	4.0
2 Lance Semenza	UNR	0	x	1	0	1	1	3.0
3 Robert Radtke	UNR	0	0	x	1	1	1	3.0
4 James Fletcher	UNR	0	1	0	x	1	1	3.0
5 Robert Motley	UNR	1	0	0	0	x	1	2.0
6 Paul Haugen	UNR	0	0	0	0	0	x	0

6TH CK Bill Wraith-Tom Booth QUEEN'S IND
 1 P-Q4 N-KB3 2 P-QB4 P-K3 3 N-QB3 P-QN3 4 N-KB3 B-N2 5 Q-B2 B-K2 6 P-K3 P-Q4 7 B-Q2 QN-Q2 8 QR-B1 O-0 9 PxP NxP 10 NxN BxN 11 B-Q3 N-KB3 12 P-KR4 P-QB4 13 N-N5 BxNP 14 BxPch K-R1 15 R-N1 B-R6 16 PxP BxP 17 P-N4 B-K2 18 R-N3 B-N5 19 P-B3 B-R4 20 B-B3 R-B1 21 P-R3 Q-B2 22 Q-KN2 P-QR4 23 N-K4 KxB 24 RxPch K-R1 25 Q-N5 B-N3 26 Q-R6ch B-R2 27 RxPch Black Resigns. 1-0

UCCC 2nd Winter Open - Mike Jensen was the clear winner of the 4 round open section which drew 20 players. Mike has been growing in strength over the past year, testimony to what a self-study program and a catalog from Chess Digest can do. The results for Gregg Ford and Matt McCafferty (3 points each) are also noteworthy. Gregg finished best under 1200 in the Valentine Open and with two good tournaments back-to-back he has become a respected opponent. Matt McCafferty is a high school freshman who has been encouraged in his chess by Bob McKean. This is Matt's best ever finish. In the Under 1200 section, Steve Votruba lost only one game (in a 6 man RR) to score 4 and an outright win.

Jensen-Guthrie RD4 BD1 CLOSED SICILIAN Montana players don't often face a closed Sicilian (and, as it is a totally different system, it is a wonder more players with the White pieces don't use it, given the popularity of 1...c5 among the State's players). This game was adjourned on move 15. Matt lost the exchange a few moves later and that was all Mike needed. 1 e4 c5 2 Nc3 Nc6 3 f4 e6 4 Nf3 d5 5 Bb5 d4 6 Ne2 Nf6 7 Bxc6+ bxc6 8 d3 Ba6 9 b3 Be7 10 O-O O-O 11 Qe1 Rb8 12 Qg3 Re8 13 f5 exf5 14 e5 Nd5 15 Bh6 Bf6 16 Nh4 Kh8 17 Bg5 f6 18 exf6 gxf6 19 Bf4 Rxe2 20 Bxb8 Ne3 21 Rf1 Rxc2 22 Rxc2 Nxc2 23 Nxf5 Nxa1 24 Bd6 Bc8 25 Be7 Black Resigns. 1-0

Carpenter-Erickson RD3 BD6 DANISH (or Goring) GAMBIT DECLINED Ron is an aggressive player whose attacks take advantage of any passivity. 1 P-K4 P-K4 2 P-Q4 PxP 3 P-QB3 P-Q3 4 PxP P-QN3 5 N-KR3 B-N2 6 N-B3 N-Q2 7 B-QB4 P-KR3 8 O-O P-KN4 9 B-K3 P-N5 10 N-Q2 P-KR4 11 P-B3 B-KR3 12 BxB NxB 13 PxP PxP 14 N-Q5 P-QN3 15 N-K4 Q-R5 16 R-B4 O-O-O 17 P-R3 Q-N6 18 R-B2 QxN 19 PxP QR-N2 20 N-B1 QxP 21 Q-B3 QxP 22 BxP QxQ 23 RxQ R-B1 24 B-Q6 RxP 25 PxR R-B1 26 K-B2 N-B4 White Resigns. 0-1

Fisher-Ford RD3 BD2 SICILIAN An interesting game in which White begins a premature attack against f7 at move 6 and another effort at move 12. Black displays patience and skill in defence. 1 P-K4 P-QB4 2 B-N5 P-R3 3 B-B4 N-QB3 4 N-KB3 P-Q3 5 O-O N-KB3 6 N-N5 N-K4 7 B-N3 P-B5 8 P-Q4 KN-Q2 9 PxN NxB 10 BxP NxB 11 P-QB3 P-KN3 12 Q-R4ch P-N4 13 Q-Q1 B-QN2 14 Q-B3 N-K4 15 Q-K2 B-N2 16 R-Q1 O-O 17 B-B4 Q-Q2 18 P-KR3 QR-B1 19 N-B3 NxBch 20 QxN P-B4 21 N-Q2 PxP 22 Q-N4 QxQ 23 PxQ RxB 24 P-KN3 RxNP 25 R-K1 R-QB4 26 R-K3 R-R4 27 R1-K1 P-N5 28 NxB PxP 29 P-B3 RxN 30 PxR B-Q6 31 PxP BxR 32 RxB R-K4 33 P-B4 RxP 34 R-N3 B-B3 35 R-N6 RxP 36 RxP P-K4 37 P-R4 P-K5 38 K-B2 P-Q4 39 P-R5 P-Q5 40 R-N5 R-B7ch 41 K-! P-K6 42 P-R6 P-Q6 43 P-R7 R-B8 Mate. 0-1

McCafferty-Britt RD3 BD4 PIRC (sort of) Young Matt's play well illustrates the warning against pawn snatching with the Queen by delivering a mate to Black's uncastled King on move 17. 1 P-Q4 P-QB3 2 P-QB4 N-KB3 3 N-QB3 P-Q3 4 N-KB3 QN-Q2 5 B-B4 N-R4 6 Q-Q2 P-KN3 7 P-K4 B-N2 8 P-K5 N-B1 9 PxP NxB 10 QxN N-K3 11 Q-K3 QxP 12 R-Q1 P-KR4 13 P-Q5 N-B4 14 PxP QxP 15 N-Q4 Q-N3 16 N-Q5 QxNP 17 QxP Mate. 1-0

McKean-Austin RD3 BD5 SICILIAN KIA Bob finds a nice little combination to end this game in 17 moves. 1 P-K4 P-QB4 2 N-KB3 P-Q3 3 P-KN3 N-KB3 4 P-Q3 P-K3 5 B-N2 B-K2 6 O-O N-B3 7 N-Q2 Q-B2 8 R-K1 P-QN4 9 P-QR4 R-N1 10 PxP PxP 11 N-B4 P-KR3 12 P-K5 PxP 13 N3xP NxB 14 NxB B-N2 15 RxP O-O 16 B-B6 Q-N3 17 RxB Black Resigns. 1-0 Report by Bill McBroom!

MIDSUMMER OPEN

Sponsor - University Community Chess Club
(Same details as Spring Open except)

July 24-25, 1982

Director: Tim Hovet, 112 Helena Court, Missoula, MT 59801.

*****6*****

RESORTED
FIRST CLASS

Montana Chess
Association
MONTANA CHESS NEWS
Editor
William M. Lynch
1144 Harvard Ave.
Billings MT 59102