

MONTANA CHESS NEWS

JAN.-FEB 1982

VOLUME VII - ISSUE 1

GUTHRIE SWEEPS 1ST '82 TOURNEY

VALENTINE OPEN

Sponsor - University-Community Chess Club

February 13-14, 1982

Place: Room 362, Social Science Building, Univ. of MT Campus, Missoula, MT 59801.
 Registration: 9:00-9:30am, Feb. 13. USCF membership req'd, MCA membership req'd except for new players - USCF=\$20 Adult, \$10 Junior, \$5 Tournament; MCA=\$4 Adult, \$3 Junior; USCF+MCA=\$20 Adult, \$10 Junior, \$9 Tournament. Entry Fees = \$5 in advance, \$8 at door. Mail entries to address below. New players free.
 Rounds: 5 Round Swiss System. 9:30am, 2:00pm, 7:00pm / 9:00am, 2:00pm.
 Time Control: 30 moves / 90 minutes, then 25 moves / hour thereafter.
 Prizes: Trophies 1st, 2nd, 3rd, Best Under 1600, 1400, 1200.
 Director: Bill McBroom, 2312 Raymond, Missoula, MT 59802.
 Notes: Limited smoking (in a separate room which your opponent must agree to go to)

6TH COPPER KINGS OPEN

Sponsor - Montana Chess Association

March 13-14, 1982

Place: Mining & Geology Building, Montana Tech. Campus, Butte, MT 59701.
 Registration: 9:00-9:30am, March 13. USCF and MCA membership req'd - see above for rates. Entry Fees = \$10 rated sections, \$1 non-rated section, free to new players in rated sections and to those rated over 2000.
 Rounds: 5 Round Swiss System. 10:00am, 2:00pm, 7:00pm / 10:00am, 2:00pm.
 Time Control: 40 moves / 2 hours per player, then 25 moves / hour thereafter.
 Prizes: Top Section = \$30 1st, \$15 2nd + Trophies. Lower Section = \$30 1st, \$15 2nd + Trophies. Non-rated Section = \$\$ as entries allow. Rated sections will be divided into approximately equal groups.
 Director: William M. Lynch, 1144 Harvard Ave., Billings, MT 59102.

UCCC SPRING OPEN

Sponsor - University-Community Chess Club
(Same details as Valentine Open)

April 24-25, 1982

47TH MONTANA STATE OPEN

Sponsor - Montana Chess Assoc.
Helena, MT - No details yet available.

May ??, 1982

Ed Edmondson of the Chess Book Club which advertises new books prior to publication and takes advance orders, arranging delivery direct from the publisher, states in his latest newsletter that MCO 12 will be published by the David McKay Company by the end of March. It is edited by Walter Korn, as was MCO 11, and will be printed in Algebraic Notation. If you are interested in an advance order, inquire immediately of E. B. Edmondson, 47-169A Hui Akepa Place, Kaneohe, HI 96744 for club membership information and prices. Members are offered discounts and your editor has received good service on orders in the past.

Pl	Name	Rating	RD1	RD2	RD3	RD4	RD5	Tot	T-B
1	Matt Guthrie	2013	W13	W8	W5	W2	W4	5.0	
2	Jim Loy	1791	W11	W7	W3	L1	W9	4.0	9.0
3	Mike Jensen	1776	W6	W4	L2	W14	W8	4.0	8.0
4	Danny Barash	1998	W15	L3	W16	W5	L1	3.0	9.5
5	Romie Carpenter	1601	W17	W9	L1	L3	W14	3.0	7.0
6	Craig Stroup	1100	L3	W11	L8	Bye	W13	3.0	6.5
7	Matt Janke	996	Bye	L2	L10	W17	W15	3.0	4.5
8	Fred Betz	1652	W14	L1	W6	D9	L3	2.5	9.0
9	Bill Lynch	1867	W16	L5	W15	D8	L2	2.5	7.0
10	Bob Jordan	1652	D12	L13	W7	W16	WD	2.5	5.5
11	Chuck Chapman	1436	L2	L6	Bye	D15	W17	2.5	4.5
12	Dan Polette	1012	D10	L15	W17	L13	W16	2.5	4.5
13	Bob McKean	1534	L1	W10	L14	W12	L6	2.0	8.0
14	Susan Pounds	1091	L8	Bye	W13	L3	L5	2.0	7.5
15	Jim Chester	1526	L4	W12	L9	D11	L7	1.5	
16	Tim Eichhorn	1446	L9	W17	L4	L10	L12	1.0	
17	Mike Chester	Non	L5	L16	L12	L7	L11	0	

Not even a blizzard could prevent Matt Guthrie from rolling to a perfect score in the 1982 MSU Open. Unable to leave from Missoula until 7am Saturday because the highway was closed, he and fellow Missoulians Mike Jensen, Romie Carpenter and Bob McKean arrived late for Round 1 but played well. Jensen and Carpenter knocked off the 2nd and 3rd ranked players in round 2 and Matt won a series of exciting games culminating with victories over Montana co-champion Jim Loy and our 13 year old visitor from Israel, Danny Barash.

This was also a good tournament for some other promising young players from Bozeman. Dan

Polette, Matt Janke and Craig Stroup all turned in last round upsets to finish well in the standings. All three should be rated close to 1300 following this event.

RD2 BD2 Mike Jensen-Danny Barash SICILIAN 1 P-K4 P-QB4 2 P-Q4 PxP 3 P-QB3 PxP 4 NxP N-QB3 5 N-KB3 P-Q3 6 B-QB4 P-K3 7 O-O N-KB3 8 Q-K2 Q-B2 9 KR-Q1 P-QR3 10 B-KB4 P-K4 11 B-N5 B-K2 12 BxN BxB 13 N-Q5 Q-Q1 14 P-KR3 O-O 15 Q-Q3 N-R4 16 QR-B1 NxB 17 QxN B-K3 18 Q-B7 B-KN4 19 R-B3 R-QN1 20 NxB QxN 21 QxQP KR-Q1 22 N-K7ch K-B1 23 N-N6ch-disch K-K1 24 Q-B1 Mate. 1-0

RD2 BD3 Bill Lynch-Romie Carpenter ALEKHINES 1 e4 Nf6 2 e5 Nd5 3 c4 Nb6 4 d4 d6 5 exd6 exd6 6 Nf3 g6 7 Be3 Bg7 8 Be2 Bf5 9 Nc3 Nc6 10 Rc1 Nd7 11 Nh4 Qa5 12 Nxf5 Qxf5 13 Bg4 Qa5 14 Bxd7+ Kxd7 15 O-O Rac8 16 Re1 Bf6 17 Qg4+ Kc7 18 Nd5+ Kb8 19 Nxf6 exf6 20 d5 Ne5 21 Qd4 Qc5 22 Qc3 Qxc4 23 Bxa7+ Ka8 24 Qxc4 Nxc4 25 Bd4 Ne5 26 Rxc8+ Rxc8 27 Bc3 g5 28 g3 Nf3+ 29 Kf1 Nxe1 30 Kxe1 Rc5 31 Bxf6 Rxd5 32 h4 g4 33 Ke2 Rf5 34 Bd4 b5 35 Ke3 d5 36 Ke2 Kb7 37 Ke3 Kc6 38 Ke2 Kd6 39 Ke3 Rf3+ 40 Ke2 Ke6 41 Bg7 h5 42 Bd4 Kf5 43 Be3 Ke4 44 Bg5 d4 45 Bg6 d3+ 46 Ke1 Rf6 47 Bg7 Rc6 48 Bc3 Kf3 49 a3 Rxc3 50 bxc3 f6 White Resigns. 0-1

RD2 BD1 Matt Guthrie-Fred Betz KING'S GAMBIT DECLINED 1 P-K4 P-K4 2 P-KB4 P-Q3 3 N-KB3 P-KB4 4 B-B4 B-K2 5 O-O PxKP 6 N-B3 PxN 7 QxP P-K5 8 Q-R5ch P-KN3 9 Q-Q5 N-KR3 10 QxKP P-QB3 11 R-K1 B-B4 12 Q-K2 N-Q2 13 P-KR3 N-N3 14 B-N3 R-KB1 15 P-N4 B-Q2 16 N-K4 N-B1 17 P-N5 P-Q4 18 N-N3 N-B4 19 NxN BxN 20 P-B4 N-N3 21 P-Q3 BxRP 22 B-K3 P-Q5 23 B-Q2 Q-Q2 24 B-N4 N-B1 25 K-R2 R-B2 26 Q-K5 K-Q1 27 BxBch NxB 28 Q-R8ch K-B2 29 QxR Q-N5 30 R-KN1 Q-R4 31 R-N3 RXP 32 Q-R8 Q-K7ch 33 KxB N-B4 34 QxPch K-N3 35 P-B5ch K-N4 36 QxPch KxP 37 R-B1ch K-Q3 38 RXPch K-K4 39 Q-N5 Mate. 1-0 A wild finish to a wild game - even more so than is apparent from the score, as both players were short of time trying to reach move 45.

RD3 BD1 Romie Carpenter-Matt Guthrie PIRC 1 e4 d6 2 d4 Nf6 3 Nc3 g6 4 f4 Bg7 5 Nf3 O-O 6 Be3 b6 7 e5 Nfd7 8 Bd3 Bb7 9 Be4 Bxe4 10 Nxe4 c5 11 exd6 exd6 12 Qd3 (If Nxe6 then Qe7) Qe7! 13 O-O-O c4 14 Qxc4 Qxe4 15 Rhe1 Nf6 16 Bd2 Qc6 17 Qb3 Nbd2 18 Re7 Rae8 19 Rde1 Rxe7 20 Rxe7 d5 21 Bb4 Re8 22 Ne5 Nxe5 23 fxe5 Rxe7 24 Bxe7 Ne4 25 Qh3 Qe6 26 Qxe6 fxe6 27 c3 Kf7 28 Bh4 g5 29 Be1 Kg6 30 Kc2 Kf5 31 Kb3 Kf4 32 c4 Ke3 33 Bc3 Nd2+ 34 Bxd2 Kxd2 35 cxd5 exd5 36 Ka4 Kd3 37 e6 Bf8 38 Kb5 Kxd4 39 Ka6 Kc5 White Resigns. 0-1

RD3 BD5 Fred Betz-Craig Stroup PETROFF 1 P-K4 P-K4 2 N-KB3 N-KB3 3 NxP Q-K2 4 N-KB3 QxP ch 5 B-K2 P-Q4 6 O-O B-Q3 7 R-K1 O-O 8 P-Q4 B-KN5 9 N-B3 Q-K1 10 N-KN5 BxB 11 RxB Q-Q1 12 Q-Q3 P-KR3 13 N-B3 R-K1 14 B-Q2 RxR 15 QxR N-B3 16 P-QR3 Q-K1 17 B-K3 N-K2 18 R-K1 P-B3 19 P-R3 N-K5 20 NxN PxN 21 N-R2 P-KB4 22 P-KB3 PxP 23 NxP P-B5 24 BxB BxB 25 QxN QxQ 26 R-Q R-N1 27 P-QR4 K-B1 28 R-Q7 P-B4 29 K-B2 PxP 30 NxP B-K4 31 P-B3 K-N1 32 N-K6 P-QN4 33 N-B5 R-B1ch 34 K-K2 PxP 35 RxRP R-K1 36 K-Q3 R-Q1ch 37 K-K4 R-K1 38 K-Q5 BxP 39 PxB R-Q1 ch 40 K-B6 R-Q7 41 P-N3 R-KN1 42 N-K4 R-QR7 43 K-N5 R-N7ch 44 K-B4 R-QR7 45 K-N4 R-N7ch 46 K-R3 R-N6ch 47 KxP R-N8 48 R-R5 K-B2 49 R-N5 R-R8ch 50 K-N4 R-N8ch 51 K-B5 R-K8 52 K-Q5 R-Q8ch 53 K-K5 R-K8 54 P-B4 P-N4 55 P-B5 R-QB8 56 R-N6 K-K2 57 RxP K-Q2 58 R-KN6 RxPch 59 NxRch Black Resigns. 1-0

P1 Name	Rating	RD1	RD2	RD3	RD4	TOT	T-B
1 Kip Stubberud	1929	W14	W5	W12	W3	4.0	
2 Charles Ahern	1300	W16	W26	W4	D7	3.5	
3 Howard Hoene	1687	W8	W23	W9	L1	3.0	5
4 Romie Carpenter	1589	W30	W10	L2	W14	3.0	4 1/2
5 Bob McKean	1534	W21	L1	W28	W11	3.0	4/8 1/2
6 Gordon Shuck	1727	L9	W24	W13	W12	3.0	4/7
7 Mike Jensen	1769	W15	D19	W20	D2	3.0	3 1/2/7 1/2
8 Tim Montler	1324	L3	W29	W22	W19	3.0	3 1/2/6 1/2
9 Bill McBroom	1350	W6	W22	L3	D10	2.5	5 1/2
10 Ray Jorgenson	1577	W24	L4	W15	D9	2.5	4
11 Joe Lovett	1630	W26	D20	W19	L5	2.5	3
12 Dennis Burke	1536	W25	W17	L1	L6	2.0	5/10
13 Brian Hattel	1431	L17	W25	L6	W17	2.0	5/8
14 Lyle Petersen	1429	L1	W21	W16	L4	2.0	4 1/2/10
15 John Hay	1375	L7	W27	L10	W20	2.0	4 1/2/8
16 Tom Booth	1584	L2	W18	L14	W25	2.0	4
17 Matt Guthrie	1976	W13	L12	W23	WD	2.0	3/5/3
18 Matt McCafferty	1246	L22	L16	W29	W23	2.0	3/5/1
19 Jim Chester	1526	W27	D7	L11	L8	1.5	5 1/2
20 Dan Britt	1454	W29	D11	L7	L15	1.5	4 1/2
21 Susan Pounds	1091	L5	L14	W24	D22	1.5	3 1/2/7 1/2
22 Don Norrid	1553	W18	LF	L8	D21	1.5	3 1/2/6 1/2
23 James Bush	1456	W28	L3	L17	L18	1.0	4 1/2
24 Tim Hovet	1282	L10	L6	L21	W28	1.0	4/7 1/2
25 Craig Stroup	1100	L12	L13	W26	L16	1.0	4/7
26 Randolph Hagen	1305	L11	L2	L25	W29	1.0	3 1/2/7
27 Dan Polette	1012	L19	L15	Bye	L13	1.0	3 1/2/5 1/2
28 Matt Janke	996	L23	Bye	L5	L24	1.0	2
29 Sherwood Moore	NON	L20	L8	L18	L26	0	
30 Lawrence Austin	1300	LF	WD	WD	WD	0	

COLLE SYSTEM 1 d4 d5 2 Nf3 Nf6 3 e3 e6 4 Bd3 c5 5 c3 Nc6 6 Nbd2 c4 7 Bc2 b5 8 O-O Bb7 9 e4 dxe4 10 Nxe4 Nd5 11 Re1 h6 12 Bd2 Bd6 13 Qe2 O-O 14 Nxd6 Qxd6 15 Qe4 Nf6 16 Qh4 a5 17 Bxh6 Ne7 18 Bxg7 Kxg7 19 Qg5+ Ng6 20 Ne5 Nh7 21 Qg3 Qd5 22 f3 Qd6 23 Nxb6 Time forfeit by Black. 1-0

RD2 BD1 Dennis Burke-Matt Guthrie RUY LOPEZ 1 P-K4 P-K4 2 N-KB3 N-QB3 3 B-N5 P-KB4 4 N-B3 N-B3 5 P-Q3 PxP 6 QNxP P-Q4 7 N-N3 B-Q3 8 B-N5 P-KR3 9 B-K3 O-O 10 P-QB3 B-KN5 11 P-KB3 BxN 12 QxB P-K5 13 P xP NxP 14 Q-N4 N-K4 15 Q-K6ch K-R1 16 NxN PxN 17 O-O-O R-B3 18 Q-N3 Q-K2 19 Q-B2 P-QR3 20 B-K2 N-Q2 21 R-Q2 B-B5 22 KR-Q1 N-N3 23 BxB KxB 24 P-KB3 P-K6 25 R-Q4 QR-KB1 26 Q-Q3 Q-N4 27 R-Q8 Q-K2 28 R-Q4 Q-N5 29 RxR QxR 30 Q-Q4 Q-N5 Time forfeit by Black. 1-0

RD3 BD6 Matt Guthrie-James Bush KING'S INDIAN ATTACK 1 e4 e6 2 d3 d5 3 Nd2 Nf6 4 Ngf3 dxe4 5 dx e4 a6 6 Bd3 Nbd7 7 e5 Nc5 8 exf6 Nxd3+ 9 cxd3 Qxf6 10 O-O Bd6 11 N e4 Qe7 12 Re1 Bd7 13 Bd2 Rd8 14 R c1 Bb5 15 Qb3 Bxd3 16 Bg5 f6 17 N xf6+ gxf6 18 Rxe6 Black Resigns.

RD3 BD2 Howard Hoene-Bill McBroom FRENCH 1 e4 e6 2 d4 d5 3 Nc3 dxe4 4 Nxe4 Nd7 5 Nf3 Nf6 6 Ng3 b6 7 Be2 Bb7 8 O-O Bd6 9 c4 O-O 10 Qc2 c5 11 b3 cxd4 12 Nxd4 Rc8 13 Bb2 a6 14 a4 Nc5 15 Rfe1 e5 16 Nf5 Nce4 17 Nxd6 Qxd6 18 Bf3 Qd2 19 Qxd2 Nxd2 20 Bxb2 Rd8 21 Bxe5 Nxb3 22 Rab1 Nc5 23 Bxf6 gxf6 24 Bd5 Nxa4 25 Re3 b5 26 Nh5 Rd6 27 Rg3+ Kh8 28 Rh3 Nc3 29 Rxc3 Black Resigns. 1-0

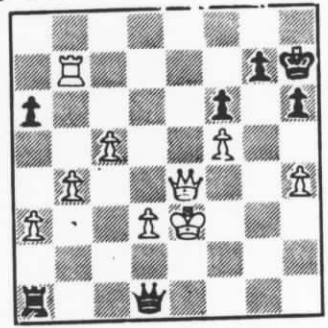
RD3 BD10 Don Norrid-Tim Montler RUY LOPEZ 1 P-K4 P-K4 2 N-KB3 N-QB3 3 B-N5 N-Q5 4 NxN PxN 5 P-Q3 P-B3 6 B-B4 N-KB3 7 N-Q2 P-Q4 8 PxP PxP 9 B-N5ch B-Q2 10 BxB QxB 11 O-O B-K2 12 N-B3 O-O 13 NxP B-B4 14 N-B3 KR-Q1 15 P-Q4 B-N3 16 B-K3 B-B2 17 Q-Q2 N-K5 18 Q-Q3 QR-B1 19 P-B3 B-Q3 20 N-N5 Q-B2 21 P-KN3 P-KR3 22 NxN PxN 23 Q-Q2 R-K3 24 KR-K1 P-KR4 25 B-B4 BxB 26 PxP R-N3ch 27 K-R1 R-K1 28 Q-K3 R-N5 29 R-KN1 RxP 30 RxPch KxR 31 Q-N3ch K-B1 32 R-KN1 R-K3 33 Q-N7ch K-K2 34 Q-N5ch R/4-B3 35 QxP White Resigns. 0-1

RD4 BD1 Howard Hoene-Kip Stubberud SICILIAN 1 P-K4 P-QB4 2 N-KB3 P-Q3 3 B-N5ch N-Q2 4 P-QR4 N-B3 5 N-B3 P-KN3 6 P-Q4 PxP 7 NxP B-N2 8 B-N5 P-QR3 9 B-QB4 Q-R4 10 Q-Q2 NxP 11 N xN QxQch 12 KxQ BxN 13 NxP PxN 14 QR-K1ch K-B1 15 R-K7 N-K4 16 B-Q5 B-K3 17 BxB PxP 18 R xNP P-R3 19 B-K7ch K-K1 20 P-QB3 R-QR2 21 R-N8ch KxB 22 RxR N-B6ch 23 K-K2 BxR 24 KxN R-N2 25 R-QN1 BxP 26 P-QN3 P-Q4 27 K-K3 K-Q3 28 K-Q3 B-N5 29 P-B3 R-QB2 30 R-N2 R-B6ch 31 K-K2 P-QR4 32 K-B2 B-B4ch 33 K-K2 P-K4 34 K-Q2 B-N5 35 K-Q1 R-K6 36 R-KB2 RxNP 37 K-B2 R-R6 38 K-N2 RxP 39 R-B1 B-B4 40 K-N3 R-QN5ch 41 K-R2 R-Q5 White Resigns. 0-1

RD4 BD2 Charles Ahern-Mike Jensen FRENCH 1 P-K4 P-K3 2 P-Q4 P-Q4 3 P-K5 P-QB4 4 Q-N4 P xP 5 N-KB3 N-K2 6 B-Q3 N-QB3 7 O-O Q-N3 8 P-QR3 N-N3 9 R-K1 B-K2 10 P-KR4 Q-B2 11 Q-N3 B-B1 12 P-R5 N-K2 13 B-Q2 B-Q2 14 P-QN4 O-O-O 15 P-N5 N-R4 16 NxQP N-B5 17 B-N4 Q-N3 18 N-N3 BxNP 19 BxN/5 BxB 20 B-R5 Q-N4 21 BxR KxB 22 N/1-Q2 N-KB4 23 Q-QB3 B-QB4 24 N/3xB Qx N 25 N-N3 Q-B2 26 N-R5 K-K2 27 Q-N4ch K-Q2 28 NxB PxN 29 QR-Q1ch K-B1 30 R-K4 K-N1 31 Qx P Q-K2 32 Q-N4 Q-B2 33 Q-R4 R-Q1 34 RxR QxR 35 P-QB4 N-K2 36 R-K1 N-QB3 37 R-Q1 Q-B2 38 P-KB4 Q-N3ch 39 K-R2 Q-B7 40 Q-N3 QxBPch 41 Q-N3 QxKP Draw. 1/2-1/2

P1 Name	Rating	RD1	RD2	RD3	RD4	RD5	TOT	T-B
1 Danny Barash	NON	W15	W3	D2	W5	D8	4.5	9.5
2 Matt Guthrie	1976	W9	W11	D1	W6	W5	4.5	8.5
3 Howard Hoene	1638	W16	L1	W12	D4	W7	3.5	8.5
4 Joe Wingard	1725	W17	L5	W9	D3	W11	3.5	7.5
5 Joe Lovett	1639	W6	W4	W7	L1	L2	3.0	11.
6 Kip Stubberud	1929	L5	W19	W10	L2	W14	3.0	8.0
7 Gordon Shuck	1729	W10	W12	L5	W11	L3	3.0	7.5
8 Duane Hildenstab	1518	W19	L9	W13	W12	L1	3.0	6.5
9 Roger White	1643	L2	W8	L4	W16	D10	2.5	9.0
10 Tim Eichhorn	1436	L7	W18	L6	W16	D9	2.5	6.5
11 Bob Jordan	1679	W14	L2	W17	L7	L4	2.0	8.5
12 Fred Betz	1687	W18	L7	L3	L8	W13	2.0	8.0
13 Luther Henley	NON	L11	W15	L8	W18	L12	2.0	5.0
14 Jim Chester	1516	½BY	LF	D19	W17	L6	2.0	2.5
15 Craig Stroup	1103	L1	L13	BYE	L10	D16	1.5	6.0
16 Dan Marsh	NON	L3	L17	W18	L9	D15	1.5	5.0
17 Dan Polette	782	L4	W16	L11	L14	L18	1.0	6.0
18 Susan Pounds	NON	L12	L10	L16	L13	W17	1.0	5.5
19 Andy Shuck	1813	L8	L6	D14	WD	WD	.5	

RD1 BD2 J. Lovett-K. Stubberud
 ENGLISH 1 P-QB4 N-KB3 2 N-QB3
 P-KN3 3 P-KN3 P-Q4 4 PxP NXP 5
 B-N2 N-N3 6 N-B3 B-N2 7 O-O P-
 QB4 8 Q-B2 N-B3 9 P-Q3 N-N5 10
 Q-Q1 N3-Q4 11 NxN NxN 12 Q-N3
 P-N3 13 N-Q2 B-N2 14 N-B4 Q-Q2
 15 N-K3 P-K3 16 N-B4 O-O 17 P-
 K4 N-N5 18 R-Q1 KR-Q1 19 P-K5
 BxB 20 KxB Q-Q4ch 21 K-N1 P-
 QN4 22 N-K3 QxQ 23 PxQ BxKP 24
 N-N4 B-N2 25 B-N5 RXP 26 N-B6
 ch K-R1 27 RxR NxR 28 N-K4 NXP
 29 R-R5 P-B5 30 RXP P-B6 31 R-
 N7 P-KR3 32 B-K3 R-QB1 33 N-Q6
 R-B3 34 NXPch K-R2 35 N-K5 R-
 Q3 36 K-B1 P-B7 37 K-K2 N-Q6
 38 NxN K-N1 39 R-N8ch K-B2 40
 R-B8 K-N3 Black Resigns. 1-0
 RD1 BD3 A. Shuck-D. Hildenstab
 RETI 1 Nf3 Nc6 2 c4 e5 3 d3 N
 f6 4 Nc3 B



c5 5 g3 d6 6 Bg2 O-O 7 a3 Bd7 8 O-O Rb8 9 Bd2 a6 10 b4 Ba7 11 Ng5 Nd4
 12 Nge4 Nxe4 13 Nxe4 Bg4 14 Re1 Qd7 15 Kh1 Qe6 16 Ng5 Qd7 17 f3 Bf5
 18 e4 Bg6 19 f4 exf4 20 gxf4 f6 21 Nf3 Bh5 22 Rf1 c6 23 f5 Qe7 24 Bf4
 Rbd8 25 Ra2 d5 26 c5 Bb8 27 Bxb8 Rxb8 28 Qb1 Nb5 29 Qb3 Bxf3 30 Bxf3
 Nd4 31 Qd1 Rbd8 32 Re1 Nxf3 33 Qxf3 Qf7 34 R2e2 Rfe8 35 exd4 Rxe2 36
 Rxe2 cxd4 37 Re6 Kh8 38 Qe2 h6 39 Re7 Qf8 40 Qe6 Kh7 41 Rxb7 Re8 42 Q
 xd5 Re1+ 43 Kg2 Qe8 44 Qf3 Re2+ 45 Kg1 Re1+ 46 Kf2 Ra1 47 Qe4 Qh5 48
 h4 Qd1 49 Ke3 DIAGRAM White Resigns! 0-1 White must lose the Queen
 or be mated - 49...Kg1+! 50 Kf4 Rf1+ 51 Qf3 Rxf3+ 52 Kxf3 Qh1+! or 50
 Kf3 Rf1+ 51 Ke2 Qf2++ or 50 Kd2 Qf2+ 51 Kc3 (Qe2? - Ra2+!) Rcl+ 52 Kb3
 Qc2++ or 50 Ke2
 Re1+ 51 Kd2 Qf2+ 52 Kc3 Rcl+ 53 Kb3 Qc2++

RD2 BD1 Bob Jordan-Matt Guthrie RUY LOPEZ 1 e4 e5 2 Nf3 Nc6 3 Bb5 f5 4 Bxc6 dxc6 5 Nxe5
 Nf6 6 exf5 Bc5 7 c3 Bxf5 8 d4 Bd6 9 O-O Qe7 10 Re1 Be6 11 Qe2 Bxe5 12 Qxe5 Kd7 13 Bf4 Ra
 c8 14 Na3 Rhf8 15 h3 Nd5 16 Bg3 Rf5 17 Qe2 Re8 18 Nc4 Kc8 19 Ne5 Nf6 20 Rad1 Nd7 21 b3 Nx
 e5 22 Bxe5 Rg5 23 Rd3 Bd5 24 f3 Qd7 25 Kh2 Rf5 26 Re3 R5f8 27 f4 h6 28 Qg4 Qxg4 29 hxg4 R
 e7 30 Bxg7 Rxxg7 31 Kg3 Kd7 32 c4 Bf7 33 f5 h5 34 Re4 Rfg8 35 Kf2 hxg4 36 Kg3 Bh5 37 f6 R
 f7 38 Rh1 Bg6 39 Rxxg4 Rxxf6 White Resigns. 0-1

RD3 BD1 Matt Guthrie-Danny Barash SICILIAN 1 e4 c5 2 Nf3 e6 3 c3 d5 4 Bd3 Nf6 5 e5 Nfd7
 6 Bc2 Nc6 7 d4 Qb6 8 a3 a5 9 O-O Be7 10 Re1 Nf8 11 Ra2 Qc7 12 Ra2 Qc7 13 Bxe7 d3 14 Qxd3
 Nxe7 15 Nbd2 b6 16 Nd4 Bd7 17 f4 Rb8 18 g3 b5 19 a4 b4 20 Nb5 Qc5+ 21 Kg2 Nf5 22 g4 Ng6
 23 Kh1 Bxb5 24 axb5 Nh6 25 Qg3 O-O 26 f5 Ne7 27 f6 Ng6 28 Rxa5 R7b5 29 Rxb5 Qxb5 30 h4 bx
 c3 31 bxc3 Qb2 32 Bxg6 fxg6 33 fxg7 Kxxg7 34 Re2 d4 35 cxd4 Qxd4 36 Nf3 Qxg4 37 Qxg4 Nxxg4
 38 Ng5 Rf5 39 Nxe6+ Kh6 40 Kg2 Rxe5 Draw. ½-½

RD4 BD2 Kip Stubberud-Matt Guthrie PIRC 1 P-Q4 P-KN3 2 P-K4 P-Q3 3 N-QB3 N-KB3 4 P-KB3
 B-N2 5 B-K3 P-B3 6 B-QB4 P-QN4 7 B-N3 QN-Q2 8 Q-Q2 B-N2 9 KN-K2 P-QR4 10 P-QR3 O-O 11 N-
 N3 Q-B2 12 O-O KR-Q1 13 B-R6 B-R1 14 P-B4 N-N5 15 P-B5 NxB 16 QxN BxPch 17 K-R1 B-N2 18
 Q-B4 N-B3 19 PxP PxP 20 R-B2 P-N5 21 QN-K2 P-B4 22 B-Q5 BxB 23 PxP R-KB1 24 Q-B4 Q-N2 25
 N-B4 N-N5 26 R-K2 BxP 27 NxP PxN 28 QxN BxR 29 QxPch B-N2 30 N-B5 RxN 31 QxR Q-B1 32 Q-Q3
 Q-B1 33 R-K1 Q-B3 34 PxP RPXP 35 R-KB1 R-R8 36 K-N1 Q-Q5ch 37 K-R1 QxQ 38 RxR BxR 39 PxQ
 P-N6 White Resigns. 0-1

RD4 BD4 Joe Wingard-Howard Hoene PETROFF 1 P-K4 P-K4 2 N-KB3 N-KB3 3 P-Q4 PxP 4 P-K5 N-
 K5 5 QxP P-Q4 6 PxP PxP NxQP 7 B-K3 N-B3 8 Q-Q2 P-KN3 9 N-B3 B-N2 10 B-K2 B-N5 11 R-Q1 O-O
 12 B-KN5 Q-K1 13 O-O KBxN 14 PxP N-K5 15 Q-K3 NxB 16 QxN QxB 17 QxB QxQBP 18 Q-QB4 QR-Q1
 19 RxR RxR 20 N-N5 Q-B4 21 Q-KR4 P-KR4 22 N-K4 K-N2 23 P-B3 P-N3 24 R-N1 R-Q2 25 Q-B2 N-
 K4 26 Q-B2 N-K4 27 R-Q1 N-B4 28 RxR NxR 29 Q-B2 N-K4 30 Q-Q2 P-R5 31 P-KR3 Q-Q2 32 Q-N5
 Q-Q8ch 33 K-R2 NXPch 34 PxN QxP 35 Q-K5ch K-B1 36 Q-R8ch K-K2 37 Q-K5ch K-B1 38 Q-R8ch K-
 K2 39 QxPch K-B1 40 Q-R6ch K-K2 41 Q-R4ch K-B1 42 Q-R8ch K-K2 continued on page 6.....

Pl Name	Rating	1	2	3	4	5	6	7	8	Score
1 Andy Shuck	1798	x	1	0	1	1	1	1	1	6-1
2 Al Williams	1344	0	x	1	0	1	1	1	1	5-2
3 Jim Loy	1775	1	0	x	0	1	1	1	1	5-2
4 Howard Hoene	1649	0	1	1	x	0	0	1	1	4-3
5 Bob Jordan	1671	0	0	0	1	x	1	1	F	3-4
6 Jim Chester	1497	0	0	0	1	0	x	1	1	3-4
7 Tim Eichhorn	1466	0	0	0	0	0	0	x	1	1-6
8 Craig Stroup	1062	0	0	0	0	F	0	0	x	0-7

Al Williams-Jim Loy QUEEN PAWN 1 d4
d5 2 e3 g6 3 Bd3 Bg7 4 Nf3 Nf6 5 Nbd2
0-0 6 0-0 Bg4 7 h3 Bxf3 8 Qxf3 Nc6 9
c3 e5 10 Bc2 e4 11 Qe2 Ne7 12 f3 exf3
13 Rxf3 c6 14 e4 dxe4 15 Nxe4 Nxe4 16
Qxe4 Nd5 17 Qg4 Qb6 18 Bb3 Nf6 19 Qh4
Rae8 20 rxf6 Bxf6 21 Qxf6 Qd8 22 Qf2 K
g7 23 Bf5 f6 24 Re1 Rxe1+ 25 Qxe1 Re8
26 Qf2 Re7 27 Kf1 Qe8 28 Qd2 g5 29 Bg3
Re3 30 Be5 Black Resigns. 1-0

Andy Shuck-Al Williams RETI 1 Nf3 d5
2 c4 e6 3 g3 Nf6 4 Bg2 Be7 5 0-0 0-0 6 b3 c5 7 Bb2 Nc6 8 e3 b6 9 d4 Bb7 10 Nbd2 cxd4 11
Nxd4 Nxd4 12 Bxd4 Nd7 13 cxd5 Bxd5 14 Bxd5 exd5 15 Nf3 Bf6 16 Rc1 Bxd5 17 Nxd5 Nf6 18 Q
d3 Qd7 19 Qf5 Qxf5 20 Nxf5 Rfd8 21 Rfd1 Kf8 22 Kg2 g6 23 Nd4 Rac8 24 Kf3 Ne4 25 Nc6 Rd7
26 Ne5 R/2c7 27 Rxc7 Rxc7 28 Rxd5 Ng5+ 29 Ke2 Ne4 30 Kf3 Ng5+ 31 Kg4 Ne4 32 Kf4 Nxf2 33
Re2 Nh3+ 34 Kg4 Ng1 35 Rg2 f6 36 Rxg1 fxe5 37 Rg2 h6 38 h4 Rf7 39 h5 g5 40 Rd2 Ke7 41 e4
a6 42 a4 Rf8 43 Rd3 Ke6 44 Rc3 Kd6 45 b4 Rf6 46 Rc8 a5 47 Rd8+ Ke7 48 Rd5 axb4 49 Rxe5+
Re6 50 Rb5 Rxe4+ 51 Kf5 Re6 52 Rxb4 Rc6 53 Re4+ Kf7 54 Ke5 Ke7 55 Kd5+ Kd7 56 Rc4 Rxc4
57 Kxc4 Kd6 58 Kd4 Kc6 59 Ke5 Kc5 60 Kf6 Kb4 61 Kg6 Kxa4 62 Kxh6 b5 63 Kxg5 b4 64 h6 b3
65 h7 b2 66 h8=Q bi=Q 67 Qa8+ Black Resigns. 1-0

continued from page 5... 43 Q-K5ch K-B1 44 Q-R8ch K-K2 45 Q-K5ch K-B1 46 Q-Q5 Q-K7ch 47
K-N1 Q-K6ch 48 K-N2 Q-K8 49 Q-Q8ch K-N2 50 Q-Q4ch K-B1 51 N-B2 Q-N8 52 Q-Q2 P-R4 53 N-Q3
Q-N4 54 Q-R6ch K-N1 55 Q-K3 Q-B3ch 56 K-B2 Q-B5 57 Q-Q2 Q-Q4 58 K-N1 P-QB4 59 Q-K2 Q-N4
ch 60 K-B1 Q-B4ch 61 N-B2 Q-N8ch 62 K-N2 Q-B4 63 Q-K8ch K-N2 64 Q-Q8 Q-N8 65 Q-Q2 Q-N4
66 Q-Q3 Q-B3ch 67 Q-K4 Q-Q3 68 Q-K3 Q-Q4 69 Q-K4 QxP 70 Q-K5ch K-R2 71 K-N3 P-R5 72 N-K4
Q-B5 Draw. 1/2-1/2

RD5 BD2 Duane Hildenstab-Danny Barash ENGLISH 1 c4 e5 2 Nc3 Nc6 3 Nf3 d6 4 d4 exd4 5 Nx
d4 Nge7 6 Nxc6 Nxc6 7 e3 g6 8 Be2 Bg7 9 0-0 0-0 10 Bd2 Be6 11 Rc1 Ne5 12 b3 f5 13 h3 Kh8
14 Nd5 Bd7 15 Bc3 c6 16 Nf4 Qe7 17 Rc2 g5 18 Nd3 f4 19 exf4 gxf4 20 Nxe5 dxe5 21 Bg4 Bf5
22 Rd2 Qg5 23 f3 Bxg4 24 fxg4 Rad8 25 Kh2 Rxd2 26 Qxd2 Rd8 27 Qe2 h5 28 Qf3 hxg4 29 hxg4
Qg6 30 Rd1 Rxd1 31 Qxd1 e4 32 Bxf7+ Qxf7 33 Qd8+ Kh7 34 Qh4+ Qh6 35 Qxh6+ Kxh6 36 Kg1 K
g5 37 Kf2 Kxg4 38 Ke2 Kg3 39 Kf1 e3 40 a3 White Resigns. 0-1

A PICTURE HISTORY OF CHESS Fred Wilson, Editor Book Review

A very entertaining book for the chess fan! In addition to 295 great pictures and illustrations one finds biographical sketches of all the past giants and lots of tidbits about the big tournaments and important head to head matches between the world's best players. This volume is fun reading and would also be good for your coffee table - something your friends could enjoy whether they play or not, and possibly interesting enough that they will want to learn how. - WML \$8.95

Dover Publications, Inc.; New York; 1981; Softcover; 182 pages; 8-3/8x11-1/4.
180 Varick Street, New York, NY 10014

*****6*****

SSAIO LSHIL
PRESORTED

Montana Chess
Association
MONTANA CHESS NEWS
Editor
William M. Lynch
1144 Harvard Ave.
Billings MT 59102