

MONTANA CHESS NEWS

MARCH - APRIL 1981

VOLUME VI ISSUE 2

MONTANA OPEN AGAIN FEATURES TOP EXHIBITOR

46TH MONTANA STATE OPEN

Sponsor - Montana Chess Assoc.

May 30-31, 1981

Place: Room #362, Social Science Building, Univ. of Mont., Missoula, MT 59801.
(Due North of central campus oval, due South of Business Administration.)

Registration: 8-9am, Saturday, May 30. USCF and MCA membership required, may join at site.

Rounds: 5 Round Swiss System. 9:30am, 2:00pm, 7:00pm/10:00am, 2:00pm.

Time Control: 45 moves / 2 hours per player, then 25 moves / hour thereafter.

Open Section: Open to all USCF members and new members. Entry Fees = \$12 Adult, \$6 Junior.

Reserve Sect: Open to all USCF members rated below 1500 and new members. Entry Fees = \$10 Adult, \$5 Junior.

Prizes: Trophies to 1st, 2nd & 3rd both sections plus Top Sr. and Top Jr.

Director: Anthony Mattina, 510 E. Beckwith, Missoula, MT 59801. 721-4634.

Notes: Limited smoking.

Exhibition: Maria Ivanka, 2321, the highest rated woman in the United States and eight times Hungarian Women's Champion will play 20 boards at 6:30pm, Friday, May 29th at the tournament site. Entry Fee = \$10. Additional boards may be played by Maria's husband Andras Budinszky, 2136, so come and try your luck. We also have hopes that Maria and Andras will join us in the Open tournament.

WYOMING OPEN

Sponsor - Wyoming Chess Assoc.

May 30-31, 1981

Place: Ramada Inn, I-25 & Center St., Casper, Wyoming, 82601. 235-5713.

Registration: Advance recommended or 8-9am, Saturday, May 30th. USCF membership required, may join at site. Entry Fees = \$5 extra at the door.

Rounds: 5 Round Swiss System. 9:00am, 2:00pm, 7:00pm/10:00am, 3:00pm.

Time Control: 40 moves / player / 2 hours.

Open Section: Open to all USCF members and new members. Entry Fees = \$15 Adult, \$7.50 Jr.

Reserve Sect: Open to all USCF members rated below 1500 and any new members. Entry Fees = \$10 Adult, \$5 Junior. (All entry fees \$5 more at door.)

Prizes: 1st Open = \$100. 1st Reserve = \$50. Trophies to 1st Wyoming Player and 1st Wyoming Junior. Other prizes dependent on number of entries.

Director: Bruce Johnson, 839 Elma St., Casper, WY 82601.

Did you like my article on Montana Opening statistics? - John Menke has compiled the same information from 5722 master games from The Chess Player, volumes 1-4. Send a self-addressed stamped envelope to Chess Opening Statistics, John Menke, Box 1313, Mt. Vernon, IL 62864 and enclose \$3.00, to receive your copy of his extensive and interesting analysis.

This issue sets a new MCN record for being late. Overtime, the flu and events leading to my engagement on April 29th have effectively kept your editor away from the typewriter. I hope to get back on track with an issue directly following the Montana Open followed by a July-August issue featuring the results of Montana's first State Championship playoff. I'm looking forward to seeing everyone in Missoula for the best Montana Open ever.

P1	Name	Rating	RD1	RD2	RD3	Score	Tie-Brk
1	Matt Guthrie	1944	W17	W7	W8	3-0	5
2	Andy Shuck	1781	W19	W18	W5	3-0	4
3	Joe Lovett	1543	W9	W15	D4	2½-½	5½
4	Gordon Shuck	1756	W25	W16	D3	2½-½	3½
5	Tony Mattina	1589	W10	W6	L2	2-1	7
6	Pezzino	1754*	W12	L5	W18	2-1	5/4/4
7	Bob McKean	1514	W23	L1	W14	2-1	5/4/2
8	Mike Jensen	1628	W24	W14	L1	2-1	4½/5
9	Erickson	1574*	L3	W17	W21	2-1	4½/3
10	Donnell Hunter	1539*	L5	W20	W19	2-1	4
11	Roger White	1615	L14	W22	W15	2-1	3/3/2
12	Howard Hoene	1637	L6	W25	W16	2-1	3/3/1
13	Romie Carpenter	1566	L15	D24	W20	1½-1½	
14	Larry Austin	1477*	W11	L8	L7	1-2	6/3/2
15	Brian Hattel	1466*	W13	L3	L11	1-2	6/3/1½
16	Dale Gross	1000	W22	L4	L12	1-2	5½/3
17	Steve Margrave	1305	L1	L9	W24	1-2	5½/1
18	Jim Chester	1412	W26	L2	L6	1-2	5/3
19	Bill McBroom	1280	L2	W26	L10	1-2	5/2
20	John Small	1369*	W21	L10	L13	1-2	4½
21	Lyle Petersen	1407	L20	W23	L9	1-2	4
22	Tim Montler	1261	L16	L11	W26	1-2	3/1
23	Darne	1038*	L7	L21	W15	1-2	3/0
24	Goodwin	1243	L8	D13	L17	½-2½	
25	Mark Zylawy	1100	L4	L12	L23	0-3	4½
26	Paul Zylawy	928*	L18	L19	L22	0-3	3

RD1 BD5 Mark Zylawy - Solid.
 Shuck KING PAWN 1 e4 Nf6 2 Nc3
 d5 3 d3 e5 4 Nf3 Nc6 5 Bg5 dx=5
 6 Bxf6 Qxf6 7 dxe4 Bb4 8 Bb5 0-0
 9 0-0 Bxc3 10 bxc3 Ne7 11 Qe2 Ng
 6 12 g3 Bg4 13 Kg2 a6 14 Ba4 Rad
 8 15 Rad1 Qe6 16 Rxd8 Rxd8 17 Rd
 1 Rxd1 18 Qxd1 Qf6 19 Bd7 Bxf3+
 20 Qxf3 Qd6 21 Be8 Qe7 22 Bg4 Qg
 5 23 Kf1 c5 24 Bb3 Qe7 25 h4 b5
 26 h5 c4 27 a4 Nf8 28 Bg2 Qa3
 and Black won. 0-1 Tony Mattina
 notes: "This is only young Mark's
 third tournament, but as this
 games proves, he promises much
 in the future."

RD3 BD1 Mike Jensen - Matt Guthrie
 ENGLISH OPENING 1 c4 e5 2
 Nc3 Nc6 3 g3 Nf6 4 Bg2 Bc5 5 Rb1
 d6 6 a3 a5 7 d3 Bd7 8 Nd5 0-0 9
 Bg5 Bxf2 10 Kf1 Nxd5 11 cxd5 Qx
 g5 12 dxc6 Bxg1 13 cxd7 Be3 14 B
 xb7 Rb8 15 Bf3 f5 16 Qa4 Bd4 17
 Qxa5 Qe3 18 Kg2 Qf2+ 19 Kh3 Rf6
 20 Kh4 Rh6+ 21 Bh5 Rxh5+ 22 Kxh5
 Qxe2+ White Resigns. 0-1 Matt is
 really developing a flair for
 tactical displays which is furth-
 er demostarted in the game he
 annotates below.

* indicates rating hand calculated after tournament.

M. Guthrie - B. McKean
 Round 2 - Board 1

- 1 d4 g6
- 2 e4 d6
- 3 Nc3 Bg7
- 4 f4 Nd7
- 5 Nf3 e6 a
- 6 Be3 Ne7
- 7 Qd2 c6 b
- 8 Bd3 Nb6? c
- 9 0-0 d Qc7
- 10 Rae1 0-0 e
- 11 f5! f exf5
- 12 Bh6 fxe4? g
- 13 Nxe4 f5
- 14 Bxg7 Kxg7 h
- 15 Ng3!! i f4
- 16 Nh4 fxg3 j
- 17 Rxf8 gxh2+
- 18 Kh1 k Kxf8
- 19 Qh6+ Kg8 l
- 20 Nxg6! m Nxg6
- 21 Re8+ Kf7
- 22 Bxg6+! n hxg6
- 23 Qf8++

a This system (developing the KN to e7) was used twice by Spassky
 in his 1966 World Championship match with Petrosian. Although
 Spassky succeeded in drawing both games, the system never became
 popular and the only modern example of its use that I have been able
 to find is the game Ljubojevic-Padevsky, Nice 1974 (won by white).
 Black's position is very solid and difficult to overcome by means of
 a direct attack. I therefore decide to complete my development as
 rapidly as possible over the next few moves. e3 is obviously the best
 square for the QB and the Queen sits well on d2 because the threat of
 Bh6 is always in the air. The correct square for the KB is harder to
 find. Bc4 would be weak because the piece would soon be driven back
 by ...b5 but both Be2 (to support a possibe h2-h4-h5) and Bd3 merit
 consideration. b The purpose of this move should be to prepare ..b5
 and Qa5 followed by a fianchetto of the QB. I was tempted to prevent
 this by 8 a4 but decided that it weakened my Q-side and wasted a
 tempo better spent on development. Black has not yet committed his
 King by castling and so I decided to abandon any plans to open the h-
 file and instead play for the f4-f5 break. c This move is weak for
 two reasons: it blocks the advance of the b-pawn and removes the kni-
 ght from potential defense of the K-side. Much better is ...b5 when a
 possible continuation is 9 f5 exf5 10 exf5 Nxf5 11 Bxf5 gxf5 12 d5!
 with a complicated position. d Probably an immediate f5 is better
 because Black can now play 9...f5! himself when 10 e5 d5 leaves White
 only a minimal edge. The reason that I abstained from 0-0-0 is that
 the rooks belong on e1 and f1 because d5 by White can always be met
 by ...exd5, exd5 c5! e Bob doesn't like having his King on the same
 file as my hungry rook. f White has completed his development, but
 Black has not yet moved his QR or QB and the QN stands little better on b6 than b8.

1-0
 (continued page 3)

(continued from page 2) therefore decided it was time to open lines. The pawn must be accepted because otherwise fxe6 followed by e5 and Nh4 is very strong. g Very weak. I can now gain a tempo while transferring a piece toward the battle zone. Probably best is Re8, when I would have continued with 13 Bxg7 Kxg7 14 Nh4 threatening Qg5. h Bob avoids 14 ...fxe4? 15 Bxf8 exd3?? 16 Rxe7! i To my mind this move, instead of the obvious N4g5, is the finest of the whole game. When I played it I had to see the entire completion of the game because if White refuses to sacrifice and had palyed instead (after 14...f4) Ne4 then 15...d5 consolidates for Black. If Black does not play 14...f4 then 15 Qg5 is very strong. 14...h6 is refuted spectacularly by 15 Ng5!?! j Bob took 27 minutes on this move. (As long as I took over the whole game.) His move loses by force but what else is there? Joe Lovett suggested Bg4, but after 16...Bg4 17 Rxf4 Rxf4 18 Qxf4 Bf5 19 N3xf5+ Nxf5 20 Nxf5+ gxf5 21 Qg5+ & 22 Re7 forces mate. k If 18 Kxh2! d5+ gives the Queen the d6 square which, in some lines, allows Black to cover simultaneously the f8 and g8 squares. l Black has two alternatives. If 19...Kf7 20 Qxh7+ Kf8 21 Rxe7! Qxe7 22 Nxg6+ Ke8 23 Qxe7++. If 19...Ke8 20 Bxg6+ hxg6 21 Nxg6 Nd5 22 Qf8+ Kd7 23 Rxe7+ Nxe7 24 Qxe7++. m Again Black has two alternatives. If 20...hxg6 21 Bxg6 Nxg6 22 Qxg6+ Qg7 23 Re8++. Best is 20...Be6 when 21 Nxe7+ Qxe7 22 Rxe6 Qg7 23 Bxh7+ Qxh7 24 Qg5+!! Kf8! 25 Qf6+! and now either 25... Qf7 26 Qh6+ Kg8 27 Rg6+ or 25...Kg8 26 Re7! with a winning ending for White in either case. n Of course 22 Qxh7+ wins the Queen, but the text is much faster. If 22...Kf6 then 23 Be4++. Notes by Matt Guthrie.

RD3 BD3 Joe Lovett-Gordon Shuck ENGLISH OPENING 1 c4 e5 2 Nc3 Nc6 3 Nf3 Bc5 4 e3 d6 5 Be2 Nf6 6 d4 Bb4 7 dxe5 Bxc3 8 bxc3 Nxe5 9 Nxe5 dxe5 10 Qa4+ c6 11 Ba3 Ne4 12 Qc2 f5 13 O-O Qd2 14 Qxd2 Nxd2 15 Rfd1 Ne4 16 Rac1 Bd7 17 f4 exf4 18 exf4 O-O-O 19 Bf3 Be6 20 Bxe4 Rxd1 21 Rxd1 fxe4 22 Rd4 Bf5 23 Bd6 Rd8 24 c5 g6 25 g4 Bxg4 26 Rxe4 Bf5 27 Re7 h5 28 Rc7+ Kb8 29 Rxc6 Ka8 30 Rc7 a6 31 a4 b6 32 Rc6 bxc5 33 Bxc5 Rd1+ 34 Kf2 Rd2+ 35 Ke1 Rc2 36 Rx a6+ Kb7 37 Rb6+ Ka8 38 Bd4 Rxh2 39 a5 Ra2 40 Ra6+ Kb7 41 Ra7+ Kb8 42 Bb6 h4 43 a6 Be4 44 Re7? Rxa6 45 Rxe4 Rxb6 46 Re8+ Kc7 47 Rh8 Rb1+ 48 Kf2 Rc1 49 Rxh4 Rxc3 50 Rh6 Rc6 51 Kf3 Kd7 52 Kg4 Ke7 53 Kg5 Rc5+ Drawn. 1/2-1/2

RD3 BD9 Donnell Hunter-Bill McBroom PIRC 1 Nf3 Nf6 2 g3 g6 3 Bg2 Bg7 4 d4 D6 5 Nc3 c6 6 O-O O-O 7 e4 Bg4 8 Qd3 Nd7 9 e5 Bf5 10 Qe2 Nd5 11 Nxd5 cxd5 12 Bf4 Qb6 13 c3 Rdc8 14 Qd2 dxe5 15 Nxe5 Nxe5 16 dxe5 Rfd8 17 Be3 Qb5 18 Bd4 f6 19 a4 Qd3 20 Qxd3 Bxd3 21 Rfd1 Be2 22 Rd2 fxe5 23 Bxa7 Bc4 24 Bb6 Rd6 25 a5 e4 26 b4 Bxc3 27 Bh3 Rf8 28 Rdd1 Bxd1 29 Rxd1 Rdf6 30 Bc5 R8f7 31 Bd4 Kg7 32 Bc8 Kf8 33 Bxb7 Rf3 34 d6 Bxd6 35 Bxd5 Rd3 36 Rxd6 Rxd4 37 Bxf7 Kxf7 38 b5 Rb4 39 b6 e6 40 Rd7 Kf6 41 b7 h5 42 h3 Kf5 43 Kf1 g5 44 Ke2 Rb2+ 45 Ke3 Rb3+ 46 Kd4 h4 47 Ra5+ Kf6 48 Rd7 hxg3 49 fxg3 e3 50 Ra3 Rxb7 51 Rxe3 Rd7+ 52 Ke4 Rd5 53 Kf3 Rd4 54 Ke2 Kf5 55 g4+ Kf6 56 Rf3+ Rf4 57 Rd3 Ke5 58 Rb3 Re4+ 59 Ke2 Rd4+ 60 Kc2 Kf4 61 K c3 e5 62 Rb5 Ke4 63 Kc2 Rc4+ 64 Kd2 Rde+ 65 Ke2 Kf4 66 Kf2 e4 67 Rf5++ 1-0 This long game decided the tie-breaks for first place in the Valentines Day Open.

The sad news reached us at the 5th Copper King Open in Butte that our good chess friend and long time MCA member Jack Reddy, of Helena, had passed away, giving in finally to an illness which had troubled him for many years. Jack was State "Class B" Champion in 1960 and again in 1971, and often gave a good account of himself in games with the top players in the state. A good number of his games have appeared in MCN, and we would like to say farewell with a couple more:

1979 Copper King Open: Jack Reddy-Gary Ritchie QUEEN'S GAMBIT 1 c4 Nf6 2 Nc6 e6 3 g3 B e7 4 d4 d5 5 cxd5 exd5 6 Nf3 O-O 7 Bg2 Nc6 8 O-O Re8 9 e3 Bg4 10 a3 Qd7 11 Qe1 Bd6 12 Qd2 Bh3 13 Ng5 Bxg2 14 Kxg2 Qg4 15 f4 h6 16 Nf3 Ne4 17 Nxe4 dxe4 18 Ne5 Nxe5 19 fxe5 Be7 20 f4 Qg6 21 Kh1 f6 22 Qg2 fxe5 23 Qxe4 Qxe4+ 24 Rxe4 exd4 25 exd4 Bf6 26 Rf4 Rd8 27 Bd2 Rx d4 28 Rf2 Rde4 29 Rh1 Re2 30 Jg2 Kxf2+ 31 Kxf2 Bd4+ 32 Kf3 Rf8+ 33 Ke4 Rd8 34 Bf4 Bb6 35 b4 c6 36 a4 Re8+ 37 Kf3 Rf8 38 Kg4 Bd8 39 h4 Kh7 40 Rd1 b6 41 Rd7 a5 42 bxa5 bxa5 43 Bc7 Bxc7 44 Rxc7 Rb8 45 Rxc6 Rb4+ 46 Kh3 Rxa4 47 Ra6 Ra1 Drawn. 1/2-1/2

Montana Open 1975: Bill Lynch-Jack Reddy RUY LOPEZ 1 P-K4 P-K4 2 N-KB3 N-QB3 3 B-N5 P-QR3 4 B-R4 N-B3 5 O-O P-QN4 6 B-N3 P-Q3 7 R-K1 B-K2 8 P-B3 O-O 9 P-KR3 B-K3 10 P-Q4 BxB 11 QxB QN-R4 12 Q-B2 PXP 13 PXP P-Q4 14 P-K5 N-K5 15 QN-Q2 B-N5 16 P-QR3 NxBN 17 NxBN BxB 18 BxB N-B5 19 B-B4 P-KN4! 20 B-R2 R-K1 21 P-QN3 N-N3 22 QR-QB1 R-QB1 23 Q-KB5 R-K3 24 R-K3 Q-K2 25 Q-N1 P-QR4 26 R-QB3 P-B3 27 R-B5 P-KR3 28 Q-B2 P-R5 (continued on page 6)

5TH COPPER KINGS OPEN

March 7-8, 1981

Place	Name	Rating	1	2	3	4	5	6	Score
1	Bill Lynch	1878	x	1	0	1	1	1/2	3 1/2-1 1/2
2	Andy Shuck	1794	0	x	1	1/2	1	1	3 1/2-1 1/2
3	K. Stubberud	1941	1	0	x	0	1	1	3-2
4	Jim Magorian	1740	0	1/2	1	x	1/2	1	3-2
5	Gordon Shuck	1758	0	0	0	1/2	x	1/2	1-4
6	Gary Ritchie	1718	1/2	0	0	0	1/2	x	1-4

Place	Name	Rating	1	2	3	4	5	6	Score
1	Joe Wingard	1685	x	1	0	0	1	1	3-2
2	Jim Loy	1674	0	x	0	1	1	1	3-2
3	Howard Hoene	1663	1	1	x	1	0	0	3-2
4	Joe Lovett	1644	1	0	0	x	1/2	1	2 1/2-2 1/2
5	Roger White	1613	0	0	1	1/2	x	1	2 1/2-2 1/2
6	Michael Poole	1416*	0	0	1	0	0	x	1-4

P1 Name	Rating	RD1	RD2	RD3	RD4	RD5	Score
1 Ray Jorgenson	1484	W9	W2	W3	W4	W7	5-0
2 Tom Booth	1450	W10	L1	W5	W7	W3	4-1
3 D. Hildenstab	1470	W8	W7	L1	W5	L2	3-2
4 Coyle Long	1455	W6	L5	W9	L1	W8	3-2
5 Lyle Petersen	1404	W12	W4	L2	L3	W10	3-2
6 Craig Stroup	1000	L4	L12	Bye	W9	W11	3-2
7 Jim Chester	1440	W11	L3	W8	L2	L1	2-3
8 Chuck Borland	1289	L3	W11	L7	W10	L2	2-3
9 John Small	1045*	L1	W10	L4	L6	Bye	2-3
10 Matt Janke	996*	L2	L9	W11	L8	L5	1-4
11 Dan Polette	782*	L7	L8	L10	Bye	L6	1-4
12 Bob D'Ambruoso	1202*	L5	W6	Withdrew			1-1

Notes: Hoene if first on tie-break based on individual game results in the second section, with Joe Wingard second - order shown above is from USCF printout. * indicates post event rating by USCF.

RD4 RR Joe Lovett-Howard Hoene ENGLISH OPENING 1 c4 Nf6 2 Nc3 c6 3 e4 d5 4 cxd5 cxd5 5 e5 d4 6 exf6 dxc3 7 fxg7 cxd2+ 8 Bxd2 Bxg7 9 Qb3 0-0 10 Bc4 Qd4 11 Bc3 Qe4+ 12 Ne2 Nc6 13 Bxg7 Kxg7 14 0-0 Ne5 15 Ng3 Qxc4 16 Qe3 Qe6 17 Rfe1 f6 18 f4 Nf3+ 19 Qxf3 Qb6+ 20 Kh1 Rf7 21 b3 Bd7 22 Qh5 e6 23 Rad1 Rg8 24 Ne4 Qb5?? (Now 25 Qxf7+ wins.) 25 Nd6?? Qxh5 White Resigns. 0-1

RD2 RR Jim Loy-Roger White QP-IRREGULAR 1 P-QB3 P-QB4 2 P-Q4 Pxp 3 Pxp P-Q4 4 N-QB3 N-KB3 5 N-B3 N-B3 6 B-B4 P-QR3 7 P-K3 P-K3 8 P-QR3 B-K2 9 B-Q3 P-QN4 10 0-0 B-N2 11 P-QN4 0-0 12 R-B1 R-B1 13 N-Q2 B-Q3 14 BxB QxB 15 N-N3 N-Q2 16 N-B5 Nxn 17 NPxn Q-B2 18 N-R2 P-K4 19 N-N4 Nxn 20 Pxn P-K5 21 B-K2 B-B3 22 R-R1 R-R1 23 R-R5 P-B4 24 P-B4 R-B3 25 Q-R1 Q-B1 26 Q-R2 B-N2 27 R-R1 R-B1 28 P-R3 Q-B3 29 P-N4 Pxp? 30 Bxp Q-N3 31 K-R2 R-B3 32 R-KN1 Q-R3 33 R-R3 K-R1 34 R-B3 Q-R5 35 Q-R5 R-R3 36 Q-B7 B-B3 37 B-K6 R-N2 38 RxR Pxr 39 R-B2 B-K1 40 Bxp R-Q1 41 Bxp B-Q2 42 B-N2 B-B4 43 P-K4 RxP 44 PxB R-Q6 45 R-B1 Q-N6ch 46 K-R1 R-Q7 47 Q-N8ch K-R2 48 Pxpch Qxp 49 Q-R8 R-K7 50 Q-B3 Black Resigns. 1-0

RD3 RR Andy Shuck-Kip Stubberud RETI 1 N-KB3 P-QB4 2 P-B4 P-KN3 3 P-KN3 B-N2 4 B-N2 N-QB3 5 0-0 P-Q3 6 N-B3 B-Q2 7 P-N3 P-QR3 8 B-N2 P-QN4 9 Pxp Pxp 10 Q-B1 P-N5 11 N-Q5 P-K4 12 P-K3 B-K3 13 N-K1 R-B1 14 P-Q3 KN-K2 15 Nxn Qxn 16 Q-Q2 P-Q4 17 P-B4 0-0 18 Pxp P-B5 19 QPxp Pxp 20 Pxp QBxp 21 R-B4 KR-Q1 22 Q-QB2 Nxp 23 R-QB1 B-QR3 24 Q-R4 N-Q6 25 Nxn Qxp Pch 26 K-R1 Bxn 27 RxR RxR 28 Q-Q7 R-B8ch 29 BxR QxBch 30 B-B1 B-K5ch 31 K-N1 Q-B4ch 32 R-B2 B-B4 33 Q-Q8ch B-B1 34 Q-Q2 K-N2 35 B-Q3 Q-N3 36 BxB PxB 37 K-N2 Q-B3ch 38 R-B3 K-N3 39 P-KR4 Q-K3 40 Q-N5mate. 1-0

RD5 RR Gary Ritchie-Bill Lynch PHILODOR 1 e4 e5 2 Nf3 d6 3 d4 exd4 4 Qxd4 Nc6 5 Bb5 Bd7 6 Bxc6 Bxc6 7 0-0 Nf6 8 Nc3 Be7 9 Qc4 0-0 10 Re1 Nxe4 11 Nd5 Bxd5 12 Qxd5 Ng5 13 Bd2 c6 14 Qh5 Ne6 15 Qg4 Bf6 16 c3 Ke8 17 Rad1 Qc7 18 Nh4 Bxh4 19 Qxh4 Qe7 20 Qg3 d5 21 Bh6 Qf6 22 Bc1 Re7 23 h3 Rae8 24 Re3 Nf8 25 Rle1 Rxe3 26 Rxe3 Qd8 27 Rxe8 Qxe8 28 Be3 b6 29 Qc7 Qd7 30 Qxd7 Nxd7 Drawn. 1/2-1/2

RD3 BD3 Tom Booth-Lyle Petersen QUEEN'S GAMBIT DECLINED 1 P-Q4 N-KB3 2 P-QB4 P-QB3 3 N-QB3 P-Q4 4 N-KB3 P-K3 5 P-QB5 P-KN3 6 B-N5 B-KN2 7 P-K3 P-KR3 8 B-R4 P-KN4 9 B-KN3 QN-Q2 10 B-Q6 B-B1 11 BxB NxB 12 P-QN4 P-QN3 13 B-K2 Pxp 14 NPxp QR-N1 15 0-0 P-QR4 16 N-QR4 N/1-Q2 17 N-K5 Q-B2 18 Nxn Nxn 19 3-R5 N-B3 20 N-N6 P-K4 21 Q-B3 Q-K2 22 Nx B RxN 23 QR-N1 0-0 24 R-N6 P-K5 25 Q-K2 N-Q2 26 R-N7 R-N1 27 KR-N1 Rx R 28 RxR R-N1 29 RxR Nxr 30 Q-N2 Q-R2 31 Q-N6 QxQ 32 Pxp Q-K-B1 33 B-N4 K-K2 34 P-N7 K-Q1 35 B-B8 K-B2 36 P-QR4 N-R3 37 K-B1 P-QB4 38 K-K2 K-N1 39 P-B3 BPxp 40 BPxp QPxp 41 KPxp N-B4 42 P-Q6 NxnP 43 P-Q7 K-B2 44 Bxn Kxp 45 Kxp K-Q3 46 K-K4 P-B6 47 K-B5 K-K2 48 K-N6 K-K3 49 P-N4 K-K4 50 Kxp K-B5 51 P-R3 P-B4 52 Pxp Kxp 53 B-B8ch K-B5 54 K-N6 Black Resigns. 1-0

RD2 RR Joe Lovett-Mike Poole ENGLISH OPENING 1 P-QB4 P-QB4 2 N-KB 3 N-QB3 3 P-K3 N-B3 4 P-QN3 P-KN3 5 B-N2 B-N2 6 P-Q4 P-Q3 7 P-Q5 N-N5 8 P-QR3 N-R3 9 P-R4 0-0 10 B-Q3 N-B2 11 N-B3 P-QR3 12 0-0 R-N1 13 P-K5 N-Q2 14 N-K4 Pxp 15 R-K1 P-B4 16 KN-N5 P-K5 17 BxB KxB 18 Bxp Px B 19 NxpP P-N3 20 KN-N5 P-R3 21 P-Q6 Pxp 22 Qxp Pxn 23 R-K7ch R-B2 24 RxRch KxR 25 N-K5ch Nxn 26 QxQ N-K3 27 Q-Q6 N-Q2 28 R-K1 KN-B1 29 R-K7ch K-N1 30 Q-Q5ch K-R1 31 Q-B7 Black Resigns. 1-0

CASPER WINTER OPEN

Jan, 17-18, 1981 Dir: B. Johnson

Place	Name	Rating	RD1	RD2	RD3	RD4	RD5	Score
1	Marc Lynn	2040	W7	W5	W2	W3	W4	5-0
2	Bob Burley	1789	W10	W4	L1	W6	D3	3½-1½
3	Dave Hays	1639	W8	W9	D4	L1	D2	3-2
4	Jack Jones	1644	W9	L2	D3	W7	L1	2½-2½
5	Les Haynes	1575	W6	L1	W8	WD	WD	2-1
6	Robert Ryan	New	L5	W10	W9	L2	L7	2-3
7	John Ott	1612	L1	L8	W10	L4	W6	2-3
8	Tom Murray	1385	L3	W7	L5	L10	Bye	2-3
9	Dan Joelson	1476	L4	L3	L6	Bye	W10	2-3
10	Bill Hays	1483	L2	L6	L7	W8	L9	1-4

John Ott - Marc Lynn BENONI
 1 P-QB4 N-KB3 2 P-Q4 P-B4 3 P-K3
 P-K3 4 P-Q5 PxP 5 PxP P-KN3 6 P-
 KN3 P-Q3 7 B-N2 P-QN4 8 N-K2 B-
 KN2 9 O-O B-N2 10 N-R3 P-QR3 11
 R-N1 QN-Q2 12 P-N3 O-O 13 B-N2
 R-K1 14 N-B4 N-N3 15 Q-Q3 P-KN4
 16 BxN QxB 17 N-R5 Q-B6 18 KR-Q1
 QxQ 19 RxQ B-K4 20 P-B4 PxP 21
 NPxP B-R1 22 R-QB1 B-N7 23 R-B2
 BxN 24 N-B6ch K-R1 25 NxR RxN 26
 B-B3 P-B4 27 B-R5 R-K2 28 R-KN2
 P-B5 29 PxP NxP 30 P-K4 B-B4ch
 31 K-R1 RxP 32 P-KR3 N-K6 33 R-
 N5 RxP 34 B-B7 P-R3 35 R-N8ch K-
 R2 36 R-Q2 R-Q5 37 R-K2 RxP 38
 K-R2 N-B8ch 39 K-N2 R-Q8disch
 40 White Resigns. 0-1

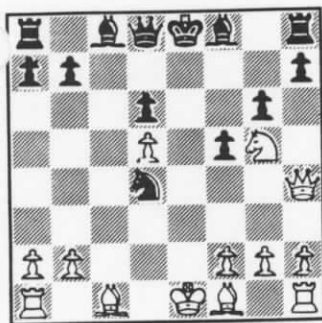
Dir: B. Johnson

CASPER WINTER RESERVE

Place	Name	Rating	1	2	3	4	5	6	Score
1	Dave Riedel	New	x	1	½	1	1	1	4½-½
2	Robert Shaw	New	0	x	1	1	1	1	4-1
3	Richard Graff	1175	½	0	x	1	0	1	2½-2½
4	Bill Boyle	1269	0	0	0	x	1	1	2-3
5	Ty Griffin	1310	0	0	1	0	x	1	2-3
6	Al. Kirschenmann	1195	0	0	0	0	0	x	0-5

Bob Burley - Bill Hays VIENNA
 GAMBIT 1 P-K4 P-K4 2 N-QB3 N-
 KB3 3 P-B4 PxP 4 P-Q4 B-N5 5 B-
 Q3 O-O 6 N-B3 P-Q4 7 P-K5 N-K5
 8 O-O NxN 9 PxN BxP 10 R-N1 N-B3
 11 BxBP BxPch 12 K-R1 B-N5 13 Bx
 Pch K-R1 14 Q-Q3 BxN 15 RxB BxP
 16 R-R3 BxB 17 B-N8disch B-R3 18
 Q-R7 Mate. 1-0

Marc Lynn - Les Haynes RUY LOPEZ 1 P-K4 P-K4 2 N-KB3
 N-QB3 3 B-N5 P-QR3 4 B-R4 N-B3 5 P-Q4 NxQP 6 NxP B-B4
 7 O-O O-O 8 N-Q3 N-K3 9 N-B3 P-Q4 10 P-K5 N-K5 11 N-K2
 P-KB3 12 P-QN4 B-K2 13 P-KB3 N/5-N4 14 P-KB4 N-K5 15 P-
 B5 N/3-N4 16 P-K6 P-N4 17 B-N3 B-N2 18 P-KR4 NxP 19 PxN N-Q3 20 N-B5 B-B1 21 BxP R-N1 22
 N-Q4 R-N3 23 B-B6 N-B5 24 B-Q7 N-K4 25 N-B5 BxB 26 PxP NxP Black Resigns. 1-0



Bob Burley - Marc Lynn BELGRADE GAMBIT 1 P-K4 P-K4 2 N-QB3 N-QB3 3
 N-B3 N-B3 4 P-Q4 PxP 5 N-Q5 NxP 6 Q-K2 P-B4 7 N-N5 P-Q6 8 PxP N-Q5 9
 Q-R5ch P-KN3 10 Q-R4 P-B3 11 PxN PxN 12 PxQP DIAGRAM N-B7ch? a 13 K-
 Q1 NxR 14 B-Q3 b Q-B3 15 R-K1ch B-K2 16 B-Q2 P-KR3 17 P-Q6 QxQP 18
 B-QB4 K-B1 19 K-B1 QxBch 20 KxQ BxNch 21 White Resigns. 0-1 a 12...
 Q-R4ch or 12...B-N2 are better for Black. b 14 Q-Q4 R-KN1 15 P-B6
 threatening 16 B-QB4 or 14 B-QN5 and 15 R-K1ch wins for White per
 Euwe in the old archives. (Notes by Bruce Johnson.)

Bob Shaw - David Reidel KING PAWN 1 P-K4 P-QB4 2 N-KB3 P-Q3 3 P-KN3
 P-K4 4 B-N2 N-QB3 5 P-B3 B-N5 6 O-O KN-K2 7 R-K1 Q-Q2 8 P-QR3 P-B4 9
 P-Q3 P-KR3 10 Q-Q2 BxN 11 BxB O-O-O 12 P-QN4 PxNP 13 RPxP P-QN3 14 P-N5 N-R4 15 Q-N2 P-Q4
 16 PxBP NxP 17 RxP R-K1 18 RxP R-K1 19 K-N2 Q-K3 20 P-B4 B-K2 21 B-N4 R-B1 22 B-B4 Q-N3 23
 B-R3 N-R5ch 24 White Resigns. 0-1 Black's last move is of course illegal. However, White
 saw the mate and resigned, forgetting that the Knight was pinned. Resignations are final
 and the Laws of Chess state that the game cannot be restarted even if an illegal move is
 found to have occurred. If an illegal move is found before the game is over, the position
 occurring just before the illegal move is restored, and the game continued from that point.

Marc Lynn - David Hays FRENCH DEFENSE 1 P-K4 P-K3 2 P-Q4 P-Q4 3 N-QB3 N-KB3 4 B-KN5 B-K2
 5 P-K5 KN-Q2 6 P-KR4 BxB 7 PxP QxP 8 N-R3 Q-K2 9 Q-N4 P-KN3 10 B-Q3 P-QR3 11 O-O-O P-QB4
 12 N-B4 P-B4 13 Q-N3 N-B1 14 N/4xQP PxN 15 NxP Q-N2 16 N-N6 B-K3 17 NxR P-QN4 18 PxP N-B3
 19 P-R3 B-B1 20 N-N6 B-N2 21 BxBP Q-K2 22 B-B8 BxB 23 NxP QxBP 24 N-Q6ch Black Resigns. 1-0
 (Dave Hays is the current Wyoming Junior Champion, and is developing into a fine player.)

Marc Lynn - Jack Jones FRENCH DEFENSE 1 P-K4 P-K3 2 P-Q4 P-Q4 3 N-QB3 N-KB3 4 B-KN5 B-K2
 5 P-K5 KN-Q2 6 P-KR4 P-KB3 7 PxP NxP 8 B-Q3 QN-Q2 9 Q-K2 N-N3 10 O-O-O P-B4 11 PxP BxP 12
 B-N5ch K-B1 13 N-B3 P-QR3 14 B-Q3 Q-K2 15 KR-K1 B-Q3 16 P-R5 B-N5 17 Q-K5 B-Q2 18 P-R6 B-
 Q3 19 PxPch KxP 20 BxNch QxB 21 QxB Q-Q1 22 R-R1 R-QB1 23 BxKRP RxN 24 Q-K5ch Q-B3 25 Qx
 Qch KxQ 26 PxR Black Resigns. 1-0 Another fine tournament win for Marc, who is now living
 in Laramie and regrettably won't see much action in Montana because of the distance.

Dan Joelson - Tom Miller ENGLISH 1 P-QB4 N-KB3 2 N-QB3 P-KN3 3 P-KN3 B-N2 4 B-N2 O-O 5 N-B3 P-QB4 6 P-Q3 N-QB3 7 O-O P-K3 8 B-N5 Q-B2 9 P-K3 R-K1 10 P-Q4 PxP 11 PxP P-Q4 12 P-B5 P-QR3 13 R-K1 P-QN3 14 PxP QxP 15 Q-Q2 B-N2 16 P-KR3 N-Q2 17 QR-Q1 N-R4 18 N-QR4 Q-B2 19 R-B1 B-B3 20 Q-B3 P-K4 21 PxP R-K3 22 B-B4 N-B5 23 N-Q4 BxP 24 BxB RxB 25 RxR N/2xR 26 NxB QxN 27 P-N3 N-R4 28 QxQ N/R4xQ 29 BxP R-N1 30 P-KN4 R-N4 31 BxN NxB 32 RxN P-R4 33 R-B5 Black Resigns. 1-0 This was the decisive game in the Casper Fall Reserve tournament reported on page 4.

Howard Hoene and Don Norrid played a rated match in 1980, which Howard won 7 games to 2. The following game was the one both players thought was the most interesting:

Match Game 7 Hoene - Norrid VIENNA GAME 1 e4 e5 2 f4 Nc6 3 Nc3 d6 4 Bc4 Nf6 5 Nge2 N d4! 6 a3!? g6 7 d3 Bh6 8 g3?! Bh3 9 Be3?? Bg2 10 Rg1 Nf3+ 11 Kf2 Nxc1 12 Kxg2 a Nxe2 13 Qxe2 Qd7 14 Rf1 Bg7 15 d4 exd4 16 Bxd4 O-O-O 17 Bb5 c6 18 Ba4 Qc7 19 e5 Rde8! 20 Bxa7 b6 21 Qa6+ Qb7 22 Qxb6 Qxb6 23 Bxb6 dxe5 24 fxe5 Nd7 25 Bd4 Bxe5 26 Bxe5 Nxe5 27 Ne4 Kc7 28 c4 f5 29 Nd2 Nd3 30 Bd1 Re7 31 Rf3 Ne1+ 32 Kf2 Nxf3 33 Nxf3 Rhd8 34 Be2 Rb8 35 White Resigns. 0-1 a An interesting line arises after 12 Nxc1 exf4!! 13 gxf4 Nh5 14 Kxg2 Qh4 15 Nf3 Qg4+ 16 Kh1 Bxf4 17 Bxf4 Nxf4 18 Qf1 h5 19 Qf2 h4 20 Rg1 Nh3 21 Qg2 Qxg2 22 Rxc2 O-O-O 23 Ne2 Rh5 and it appears that Blacks attack falls short. (Notes by Howard Hoene.)

CASPER SPRING TOURNAMENT

Sponsor - Wyoming Chess Assoc.

March 28-29, 1981

- Place: Room #205, Casper College Student Center, Casper, WY 82601.
- Registration: 8:00am Saturday, Match 28th. USCF Membership required, may join at site. Entry Fee = \$5 Adult, \$2.50 Junior.
- Open Section: Open to all members and new members.
- Reserve Sect: Open to all USCF members rated below 1400 and new members.
- Time Control: Probably 45 moves/2 hours.
- Rounds: 5 Round Swiss System both sections. First Round 9am Saturday.
- Prizes: \$\$ based on number of entries in each section less expenses.
- Director: Bruce Johnson, 839 Elma, Casper, WY 82601.

Bruce Johnson also reports that the probable time for the Wyoming State Championship is once again the Memorial Day Weekend, May 23-25, 1981. The tournament will be held in Casper at a site not yet determined.

Most probable time for the Montana State Championship Open Tournament is the weekend of May 15-17, 1981 although arrangements for a master exhibition might still favor the dates May 29-June 1st. The Round Robin State Championship Playoff will be played in June. The open is scheduled for Missoula, while the site for the playoff will be determined after the six players have been qualified.

*****6*****

PRESORTED
FIRST CLASS

Assistant Games Editor
Gary L. Ritchie
Contributors
Bruce Johnson
Howard Hoene

Montana Chess
Association
MONTANA CHESS NEWS
William M. Lynch
Editor
1144 Harvard Ave.
Billings MT 59102