

# MONTANA CHESS NEWS

JAN.-FEB. 1981

VOLUME VI ISSUE I

## STUBBERUD TOPS MSU OPEN

### FISHBEIN & LYNN SWEEP CASPER TOURNAMENTS

#### VALENTINE'S DAY OPEN

Sponsor- Montana Chess Assoc.

February 14, 1981

Place: Room #362, Social Science Building, Univ. of Mont., Missoula, MT 59801  
(Due North of central campus oval, due South of Business Administration.)  
Registration: 8:00am Saturday, February 14. USCF and MCA membership required, may join at the site. Entry Fee = \$6 Adult, \$4 Junior.  
Rounds: 3 Round Swiss System. 9:30am, 2pm, 7pm.  
Time Control: 45 moves/2 hours per player, then 25 moves/hour thereafter.  
Prizes: Trophies to top places.  
Director: Anthony Mattina, 510 E. Beckwith, Missoula, MT 59801. 721-4634.  
Notes: Limited smoking.

\*\*\*\*\*

#### 5TH COPPER KINGS OPEN

Sponsor - Montana Chess Assoc.

March 7-8, 1981

Place: Student Union Building, Montana College of Mineral Science and Technology, Butte, MT 59701.  
Registration: 9:00am, Saturday, March 7th.  
USCF Section: USCF and MCA membership required, may join at the site. Entry Fee = \$7. Two six man sections determined by ratings plus an open section.  
Amateur Sect: Open to all uscf members rated below 1200 and non-members. Entry Fee = \$1. Exact format will be determined by the number of entries.  
Rounds: 5 Round Robin / 5 Round Swiss System. 10am, 2pm, 7pm / 10am, 2pm.  
Time Control: 45 moves / 2 hours per player, then 25 moves / hour thereafter.  
Prizes: Trophies + \$\$ based on entries in each section.  
Director: Andy Shuck  
Notes: Speed tournament 9am Sunday, March 8th. Players might wish to contact Gordon Shuck, Rt. #1, Box #104, Whitehall, MT 59759 about overnight lodging.

\*\*\*\*\*

USCF West German Grandmaster Robert Hübner stunned the chess world by resigning his close Candidates' Finals match against Swiss Grandmaster Viktor Korchnoi. Korchnoi will now face World Champion Anatoly Karpov of the Soviet Union in the World Championship match later this year.

Hübner had won the first and fourth games against Korchnoi, who countered with victories in the second, seventh and eighth games. Informed observers speculate that the 7th game was the critical one. Hübner stood better at the adjournment of that game but later overlooked the consequences of a knight fork and lost the game. When he resigned, the 9th and 10th games were adjourned with Hübner perhaps standing better in one and even in the other.

No official explanation has yet been offered by Hübner for his decision to throw in the towel. He resigned his 1971 quarterfinal match against Petrosian after complaining that the playing conditions were unsatisfactory, but no protests had been lodged in the current match and the speculation is that his nerves failed under the intense pressure of top level match play.

Place	Name	Rating	RD1	RD2	RD3	RD4	RD5	Score	Tie-Brk
1	Kip Stubberud	1892	W11	D10	W17	W3	W2	4½-½	
2	Bill Lynch	1842	W15	W5	W7	W9	L1	4-1	10½
3	Gary Ritchie	1659	W14	W8	W4	L1	W9	4-1	10
4	Joe Wingard	1566	W28	W17	L3	W14	W19	4-1	7½
5	Fred Betz	1624	W26	L2	W24	W15	W16	4-1	7
6	Gordon Shuck	1741	L8	W22	W10	W11	D7	3½-1½	9
7	Howard Hoene	1637	W27	W21	L2	W20	D6	3½-1½	7½
8	Ray Jorgenson	1389	W6	L3	D16	D10	W21	3-2	9
9	Andy Shuck	1796	W24	W16	W20	L2	L3	3-2	8½/14½
10	Roger White	1615	W23	D1	L6	D8	W26	3-2	8½/13½
11	Dallon Thomas	1471	L1	W26	W22	L6	W23	3-2	7
12	Randolph Hagen	1002*	L21	W25	L15	W24	W20	3-2	6
13	Leslie Gunderson	1554	L22	W27	L14	W26	W29	3-2	4½
14	Jim Chester	1368	L3	W30	W13	L4	D15	2½-2½	9½/16
15	Chuck Chapman	1468	L2	W31	W12	L5	D14	2½-2½	9½/13½
16	Don Norrid	1566	W31	L9	D8	W18	L5	2½-2½	8½
17	Keith Bayern	1821	W18	L4	L1	D25	W27	2½-2½	8
18	Duane Hildenstab	1456	L17	W28	D19	L16	W25	2½-2½	6½
19	Bob Jordan	1698	W25	L20	D18	W23	L4	2½-2½	6
20	Mark Laceky	1561	W29	W19	L9	L7	L12	2-3	8½
21	Bob McKean	1514	W12	L7	L23	W22	L8	2-3	8/13
22	Tim Eichhorn	1361*	W13	L6	L11	L21	W31	2-3	8/11½
23	Mark Wood	1037	L10	Bye	W21	L19	L11	2-3	7½
24	Dave Sparks	1451	L9	W29	L5	L12	W28	2-3	7
25	Lyle Petersen	1387	L19	L12	W28	D17	L18	1½-3½	
26	Gary Hewitt	1207	L5	L11	Bye	L13	L10	1-4	9
27	Chuck Borland	1295	L7	L13	W29	LF	L17	1-4	6½
28	Jay Ketch	1117*	L4	L18	L25	W31	L24	1-4	6
29	Chris Stroup	1011*	L20	L24	L27	W30	L13	1-4	5½
30	J. Golzy	1150*	--	L14	W31	LF	WD	1-2	0
31	D. Gilchrist	932*	L16	L15	L30	L28	L22	0-5	

G. Shuck - R. Jorgenson  
KING'S GAMBIT

1	P-K4	P-K4
2	P-KB4	PxP
3	N-KB3	B-K2
4	B-B4	B-R5ch
5	K-B1	P-Q3
6	P-Q4	B-N5
7	QBxP	Q-B3 <u>a</u>
8	Q-Q2 <u>b</u>	BxN
9	PxN	P-KN4
10	B-N3	QxPch
11	K-N1	BxB
12	PxB	QxPch
13	Q-N2	QxQch
14	KxQ	N-K2
15	R-KB1	O-O
16	N-B3	P-QB3
17	R-B6	N-Q2
18	RxQP? <u>c</u>	QR-Q1
19	P-K5	N-B4!
20	BxPch	RxB
21	P-K6	NxR
22	PxRch	NxP

And Black won after 45 moves. 0-1  
a N-K2 is regarded as best by the books.  
b B-K3 and 9 Q-N2 preparing P-KN3 should be advantageous to White.  
c The rook soon runs out of squares costing White material.

Ratings with \* are hand calculated from the tournament results.

MSU AMATEUR SECTION

Dir: J. Chester

Place	Name	RD1	RD2	RD3	RD4	Score	Tie-Brk
1	B. Gould	W10	W5	W6	W4	4-0	4
2	J. Verhoef	Bye	W10	W4	W5	4-0	2½
3	D. Poulette	W8	L4	W11	W6	3-1	
4	T. Lemieux	W12	W3	L2	L1	2-2	6½
5	D. Whalen	W14	L1	W9	L2	2-2	5½
6	R. Cowan	W7	W11	L1	L3	2-2	5
7	M. Gunderson	L6	L9	W8	W11	2-2	4
8	M. Chester	L3	W12	L7	W14	2-2	3½
9	I. Boeckman	L11	W7	L5	W10	2-2	3
10	S. Boeckman	L1	L2	Bye	L9	1-3	5½
11	A. Gay	W9	L6	L3	L7	1-3	4
12	E. Petersen	L4	L8	W14	WD	1-2	2
13	J. Golzy	--	W14	WD	WD	1-0	0
14	M. Dunse	L5	L13	L12	L8	0-4	

RD1 BD7 Gary Ritchie - Jim Chester  
SICILIAN 1 e4 c5 2 Nf3 d6 3 d4 cxd4  
4 Nxd4 Nf6 5 Nc3 g6 6 Be3 Bg7 7 f3  
0-0 8 Qd2 e5? 9 Nb5 Ne8 10 O-O-O a6  
11 Nxd6 Nxd6 12 Qxd6 Qxd6 13 Rxd6 B  
e6 14 Na4 Nd7 15 Nb6 Nxb6 16 Bxb6 Rf  
c8 17 Kb1 Bf8 18 Rd1 Rc6 19 Be3 b5  
20 Be2 b4 21 Rd2 a5 22 Rhd1 a4 23 R  
d8 Rxd8 24 Rxd8 Rc8 25 Rxc8 Bxc8 26  
Bb5 a3 27 b3 Be7 28 Bd2 f5 29 Bc4+  
Kg7 30 c3 bxc3 31 Bxc3 Bf6 32 Bb4 fx.  
e4 33 fxe4 Bb7 34 Bd5 Bxd5 35 exd5  
e4 36 Bxa3 e3 37 Kc2 Kf7 38 Kd3 Bg5  
39 Bc5 Kf6 40 Bxe3 Bxe3 41 Kxe3 Ke5  
42 a4 Kxd5 43 b4 Kc4 44 a5 Black  
Resigns. 1-0

RD2 BD1 Roger White - Kip Stubberud SICILIAN 1 P-K4 P-QB4 2 B-B4 N-QB3 3 N-KB3 P-QR3 4  
P-QR3 P-KN3 5 N-B3 B-N2 6 O-O N-B3 7 R-K1 P-Q3 8 P-Q3 O-O 9 B-KN5 P-N4 10 B-R2 R-N1 11 N-  
Q5 B-N5 12 P-KR3 BxN 13 QxB N-Q5 14 Q-Q1 P-N5 15 PxP PxP 16 NxNP RxN 17 P-QB3 RxP 18 PxN  
Q-N3 19 B-K3 N-K1 20 B-QB4 BxP 21 RxP Q-B4 22 Q-B1 N-B2 23 QxR BxQ 24 BxQ NxR 25 BxP PxB  
26 BxN R-R1 27 B-B4 K-N2 28 P-N4 R-R8 29 RxR BxR 30 K-N2 P-N4 31 P-B3 K-N3 32 K-B1 K-B3  
33 K-K2 B-Q5 34 B-Q5 P-R3 and the Bishops of opposite color engage was drawn after fifty-  
four moves. ½-½

RD3 BD8 Don Norrid - Ray Jorgenson CARO KANN 1 e4 c6 2 d4 d5 3 exd5 cxd5 4 Nf3 a6 5 Bd3 Nc6 6 O-O Bg4 7 Nd2 Nxd4 8 h3 Nxf3+ 9 Nxf3 Bh5 10 Bf4 e6 11 Qe2 Be7 12 Rfd1 Rc8 13 Qe3 Bxf3 14 Qxf3 Bg5 15 Qg4 Bf6 16 c3 h5 17 Qe2 g5 18 Be5 Bxe5 19 Qxe5 Qf6 20 Qd6 Qe7 21 Qe5 Rh6 22 Qg7 Kd7 23 Bh7 Qf6 24 Qxf6 Nxf6 25 Bc2 h4 26 f3 Nh5 27 Rd2 Nf4 28 Rad1 Ke7 29 Kf2 Rf6 30 Rh1 Rc6 31 Re1 Kf8 32 Re5 Ke7 33 Rxc5 Rc4 34 Bb3 Re4 35 fxe4 Nxf3+ 36 Ke3 Nxc5 37 exd5 e5 38 Bc2 Rd6 39 c4 b6 40 b4 Rh6 41 c5 bxc5 42 bxc5 h3 43 gxh3 Rxf3+ 44 Ke2 Rh2+ 45 Ke3 Rxd2 46 Kxd2 e4 47 Ke3 f5 48 Kf4 Kf6 49 c6 Nf7 50 Bxe4 gxe4 51 Kxe4 Nd6+ 52 Kd4 a5 53 Kc5 Ke5 54 c7-a4 55 a3 Nc8 56 Kc6 Nd6 57 Kc5 Nc8 58 d6 Nxd6 59 Kc6 Ke6 60 Kc5 Kd7 Drawn.

RD4 BD6 Don Norrid - Duane Hildenstab KING PAWN 1 P-K4 P-QB4 2 N-KB3 N-QB3 3 P-Q3 P-Q3 4 P-KN3 P-KN3 5 P-QB3 B-N5 6 B-N2 B-N2 7 QN-Q2 N-KB3 8 Q-N3 BxN 9 NxB P-QN3 10 O-O O-O 11 R-K1 N-KN5 12 B-Q2 N/5-K4 13 Nxn Nxn 14 Q-B2 R-N1 15 R/R1-B1 Q-B2 16 B-B4 R/B1-Q1 17 B-B1 N-B6ch 18 K-N2 Nxrch 19 RxN P-QN4 20 P-KR3 P-N5 21 Pxp RxP 22 P-N3 Q-N1 23 B-K2 B-K4 24 B-Q2 R-N2 25 P-B4 B-B3 26 P-N4 B-Q5 27 R-KR1 Q-B1 28 P-KR4 Q-B3 29 B-B3 Q-Q2 30 P-B5 K-N2 31 P-R5 R/2-N1 32 RPxp BPxp 33 B-R6ch K-B3 34 B-Q2 P-K4 35 P-N5ch K-N2 36 B-N4 K-N1 37 Q-B4ch Q-B2 38 Pxp QxQ 39 Pxpch K-N2 40 QPxQ R-KB1 41 B-B5 K-B2 42 P-N6ch K-B3 43 B-B6 R-R1 44 P-N7 P-R3 45 Pxr=Qch RxQ 46 B-B8ch K-B2 47 Bxp K-N2 48 R-R5 K-B3 49 K-B3 P-R5 50 K-N4 B-B2 51 R-R6ch K-B2 52 BxKP B-K3 53 B-K6ch K-K2 54 BxR BxR 55 B-B6ch RxB 56 P-R8=Qch B-N7 57 P-K5ch KxB 58 QxB P-R5 59 Q-B6ch K-Q7 60 Q-Q6ch Black Resigns. 1-0

RD4 BD9 Bob McKean - Tim Eichhorn ROBATSCH 1 P-K4 P-KN3 2 P-Q4 B-KN2 3 B-QB4 N-QB3 4 N-K2 P-Q3 5 B-K3 N-KB3 6 P-KB3 O-O 7 O-O P-QR3 8 P-QB3 P-QN4 9 B-Q3 B-N2 10 N-KN3 P-K3 11 N-Q2 P-Q4 12 P-K5 N-Q2 13 P-KB4 N-K2 14 R-KB3 P-KB4 15 KN-B1 R-QB1 16 R-R3 P-QB4 17 N-KB3 P-KR3 18 Q-Q2 Pxp 19 Bxp N-QB3 20 Q-KB2 NxB 21 Nxn K-B2 22 N-K3 N-QB4 23 B-B2 P-KN4 24 P-KN4 PxpNP 25 Nxp Pxp 26 Qxpch K-K1 27 Q-KN3 Q-KN4 28 P-QN4 N-K5 29 BxN PxB 30 Nxp R-B6 31 NxQ RxQ 32 RxR Pxn 33 N-KB6 K-B2 34 R-B1 K-K3 35 N-N4 Bxp 36 Nxp Kxn 37 RxPch K-K3 38 R-N3 K-Q4 39 P-R4 K-B5 40 R-K1 R-K1 41 P-R5 R-KR1 42 R-R3 R-KN1ch 43 K-KB2 R-KB1ch 44 K-K3 R-Q1 45 K-KB4 R-KN1 46 RxPch BxR 47 KxB R-K1ch 48 K-B5 R-Q1 49 P-R6 R-Q4ch 50 K-K6 R-Q7 51 P-R7 RxP 52 P-R8=Q R-QB7 53 Q-R4ch K-N6 54 P-B4disch KxNP 55 Pxp Kxp 56 R-QN4 K-R4 57 Q-N4 Mate. 1-0

RD4 BD3 Gordon Shuck - Dallan Thomas KING'S GAMBIT 1 P-K4 P-K4 2 P-KB4 Pxp 3 N-KB3 P-Q3 4 P-Q4 N-KB3 5 N-B3 P-KN3 6 Bxp B-N2 7 B-B4 O-O 8 O-O R-K1 9 N-KN5 B-K3 10 NxB Pxn 11 B-N5 K-R1 12 Q-B3 QN-Q2 13 Q-R3 P-K4 14 B-B7 R-K2 15 Bxp Pxp 16 N-Q5 Q-KB1 17 Nxr Qxn 18 Bxp Q-K4 19 B-B5ch K-N1 20 B-K6ch K-B1 21 KBxn QxB 22 R-B5 Q-Q6ch 23 QxQ PxQ 24 R-K1 K-K2 25 B-R4 Nxp 26 B-N3 R-KB1 27 RxR KxR 28 R-B1ch N-B7 29 R-K1 B-Q5 30 R-K2 P-B3 31 P-N3 P-B4 32 K-N2 P-N4 33 P-B3 B-N3 34 K-B3 N-Q6 35 RxP BxR 36 KxB N-K4 37 P-KR4 K-N2 38 K-Q4 N-Q2 39 P-N4 K-R3 40 B-B2 K-N2 41 P-N5 Time Forfeit Black. 1-0

RD5 BD4 Fred Betz - Don Norrid RUY LOPEZ 1 e4 e5 2 Nf3 Nc6 3 Bb5 a6 4 Ba4 Nf6 5 O-O Be7 6 Re1 d6 7 h3 b5 8 Bb3 Bb7 9 c3 a5 10 d4 exd4 11 cxd4 O-O 12 Nc3 b4 13 Nd5 Nxd5 14 Bxd5 Qd7 15 Bg5 Ra7 16 Rc1 Nd8 17 Qd3 Bxd5 18 exd5 f6 19 Bf4Nf7 20 Nh4 Bd8 21 Re3 Nh8 22 Nf5 Rf7 23 Rg3 Ng6 24 Qe4 Kf8 25 Re1 Nxf4 26 Qxf4 g6 27 Nh6 Rg7 28 Rge3 Be7 29 g4 f5 30 Kh2 Ra8 31 gxf5 gxf5 32 h4 c5 33 Nxf5 Rf7 34 Qh6+ Kg8 35 Nxe7+ Black Resigns. 1-0

RD5 BD5 Joe Wingard - Bob Jordan FRENCH 1 P-K4 P-K3 2 P-Q4 P-Q4 3 N-QB3 B-N5 4 P-K5 P-QB4 5 P-QR3 Pxp 6 Qxp N-QB3 7 B-QN5 B-Q2 8 BxN Bxnch 9 QxB BxB 10 N-B3 R-B1 11 Q-Q3 P-QR3 12 P-QR4 N-K2 13 O-O Q-B2 14 R-K1 P-N4 15 N-Q4 Q-N2 16 P-QN3 O-O 17 B-Q2 P-N5 18 QR-B1 B-Q2 19 P-QB3 Pxp 20 RxP RxR 21 BxR R-B1 22 R-R1 N-B3 23 P-B4 R-N1 24 Nxn Bxn 25 P-QN4 P-Q5 26 QxQP BxNP 27 Q-Q6 B-Q4 28 R-N1 Q-N3ch 29 QxQ RxQ 30 P-N5 K-B1 31 B-Q4 R-N2 32 P-N6 K-K1 33 B-B5 K-Q2 34 B-Q6 P-QR4 35 B-B7 B-B3 36 R-Q1ch B-Q4 37 R-QB1 B-B3 38 R-B5 Bxp 39 RxP B-B3 40 R-R3 P-N3 41 K-B2 B-Q4 42 R-R3 P-R4 43 R-QB3 B-B3 44 K-N3 RxB 45 Pxr Kxp 46 K-R4 K-Q2 47 K-N5 B-K5 48 K-B6 B-B4 49 Kxp K-Q1 50 R-B6 K-Q2 51 R-Q6 K-B2 53 RxP Black Resigns. 1-0

RD5 BD1 Kip Stubberud - Bill Lynch LARSEN'S 1 P-QN3 P-K4 2 B-N2 P-Q3 3 P-K3 N-KB3 4 N-QB3 B-K2 5 KN-K2 B-N5 6 P-B3 B-R4 7 N-N3 B-N3 8 B-K2 N-B3 9 O-O Q-Q2 10 P-B4 Pxp 11 Pxp P-KR3 a 12 P-B5 B-R2 13 B-N5 O-O-O 14 Q-B3 P-Q4 15 QB-K2 K-N1 16 QR-K1 KR-K1 17 K-R1 P-R3 18 BxN QxB 19 B-K5 B-B1 20 N-Q4 Q-N3 21 BxN RxR 22 RxR QxB 23 P-B3 P-KN3 24 Pxp QxQ 25 NxQ Pxp 26 P-Q4 B-Q3 b 27 N-K5 P-B3 28 N-B7 R-Q2? c 29 NxB RxN 30 R-K7 P-KR4 31 RxB R-K3 32 K-N1 R-K8ch 33 K-B2 R-QR8 34 P-N4 RxPch 35 N-K2 K-R2 36 R-N7 K-N3 37 RxKNP K-N4 38 R-R6 K-B5 39 RxRP K-Q6 40 R-R3ch K-B5 41 P-N4 Black Resigns. 1-0 a Played too fast. N-Q5 looks better. b P-KN4 is probably better. c 28...BxN 29 PxB R-Q2 30 Nxp P-N4 is necessary.

CASPER FALL OPEN

Oct. 18-19, 1980

Dir: B. Johnson

TOP JUNIOR STOPS IN WYOMING

Place	Name	Rating	1	2	3	4	5	6	Score
1	Alexander Fishbein	2016	x	1	1	1	1	1	5-0
2	Marc Lynn	2054	0	x	1	1	1	1	4-1
3	Bob Burley	1789	0	0	x	1	1	1	3-2
4	Thomas Murray	New	0	0	0	x	1	1	2-3
5	Bruce Johnson	1846	0	0	0	0	x	1	1-4
6	Vernon Rippey	1517	0	0	0	0	0	x	0-5

Alexander Fishbein, the 2nd highest rated Junior under 13 years of age, found himself in Wyoming this past summer when his father's business took the family there. The Casper Fall Open was the only tournament he was able to play in before his father was again transferred, and he moved to Ohio. MCN is happy to be able to print some of the games of such a promising young player against a few local players whose ability is well known. He certainly appears to have a very good future in chess.

CASPER FALL RESERVE

Oct. 18-19, 1980

Dir: B. Johnson

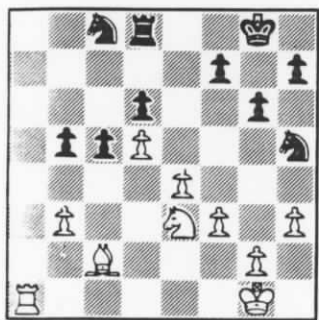
Place	Name	Rating	1	2	3	4	5	6	7	Score
1	Dan Joelson	1365	x	1	1	1	1	1	1	6-0
2	Tom Miller	New	0	x	1	1	1	1/2	1	4 1/2-1 1/2
3	Ty Griffin	1145	0	0	x	1	0	1	1	3-3
4	Al Kirschenmann	1047	0	0	0	x	1	1	1	3-3
5	Bob Thompson	1155	0	0	1	0	x	1	1	3-3
6	John Cox	1198	0	1/2	0	0	0	x	1	1 1/2-4 1/2
7	Loren Partridge	New	0	0	0	0	0	0	x	0-6

\*\*\*\*\*

\*\*\*\*\*

Alexander Fishbein - Bruce Johnson SICILIAN 1 e4 c5 2 Nf3 d6 3 d4 cxd4 4 Nxd4 Nf6 5 Be2 Bg7 7 Be3 Nc6 8 Nb3 O-O 9 O-O Be6 10 f4 Na5 11 Nxa5 Qxa5 12 Bf3 Rac8 13 h3 b5 14 a4 b4 15 Nb5 Bc4 16 Rf2 a6 17 Nd4 e5 18 Nb3 Qc7 19 Rd2 Rfd8 20 a5 Qe7 21 Bb6 Rd7 22 fxe5 dxe5 23 Rxd7 Nxd7 24 Be3 f5 a 25 exf5 gxf5 26 Bd5+ Kh1 27 Bxc4 Rxc4 28 Qd3 Qf7 29 Rd1 Rc7 30 Qxa6 b Rxc2 31 Qa8+ Nf8 32 Nc5 e4 33 Nd7 Rc7 c 34 Nxf8 Bxf8 35 Rd8 Kg8 36 Bh6 Black Resigns. 1-0 a Maybe 24...Rd8 is better. b Or 30 Bb6 Nxb6 31 Qd8+ Bf8 32 axb6 R-moves 33 Na5 wins. c 33...Qh5 may enable Black to survive. (Notes by Bruce Johnson.)

Bob Burley - Alexander Fishbein VIENNA GAME 1 P-K4 P-K4 2 N-QB3 N-KB3 3 P-B4 P-Q3 4 N-KB3 N-B3 5 P-Q3 B-K2 6 B-K2 O-O 7 O-O P-QR3 8 P-KR3 R-K1 9 P-B5 P-Q4 10 Q-K1 B-B4ch 11 K-R1 B-N5 12 Q-R4 N-Q5 13 B-Q1 NxN 14 BxN NxP! 15 Q-K1 N-B3 16 P-N4 P-K5 17 Pxp Pxp 18 B-N2 B-Q2 19 B-K3 B-B3 20 R-Q1 Q-K2 21 P-N5 BxN 22 PxB N-Q4 23 P-B6 Q-K4 24 B-Q4 QxNP 25 Pxp N-B5 26 RxN QxR 27 Q-K2 Q-N6 28 B-K3 QR-Q1 29 R-KB1 R-K3 30 R-B5 R-KN3 31 R-B2 B-N4 32 P-B4 Bxp 33 QxB R-Q8ch 34 White Resigns. 0-1



Alexander Fishbein - Marc Lynn RUY LOPEZ 1 P-K4 P-K4 2 N-KB3 N-QB3 3 B-N5 P-QR3 4 B-R4 N-B3 5 O-O B-K2 6 R-K1 P-QN4 7 B-N3 O-O 8 P-Q4 P-Q3 9 P-B3 B-N5 10 B-K3 Pxp 11 Pxp N-QR4 12 B-B2 N-B5 13 B-B1 P-B4 14 P-QN3 N-N3 15 B-N2 KN-Q2 a 16 QN-Q2 Q-B2 17 P-Q5 B-B3 18 BxB NxB 19 N-B1 KR-K1 20 P-KR3 BxN 21 QxB P-QR4 22 N-N3 P-R5 23 N-B5 P-N3 24 Q-N3 Pxp 25 Pxp RxR 26 RxR N-B1 27 P-B3 N-R4 28 Q-N5 Q-Q1 29 QxQ RxQ 30 N-K3 DIAGRAM R-Q2? b 31 R-R8 R-B2 32 R-N8 P-N5 33 N-B4 K-N2 34 P-K5 Pxp 35 P-Q6 Nxp 36 NxB N-B5 37 N-K8ch Black Resigns. 1-0

a To this point, the game follows exactly the line in Modern Chess Openings 11, page 43, note 1, which is called equal. b White develops a quick attack. (Notes by Bruce Johnson.)

Marc Lynn - Bob Burley RUY LOPEZ 1 P-K4 P-K4 2 N-KB3 N-QB3 3 B-N5 P-QR3 4 B-R4 N-B3 5 P-Q4 Pxp 6 O-O P-QN4 7 B-N3 P-Q3 8 N-N5 N-K4 9 P-KB4 B-N5 10 Qxp P-B4 11 Q-B3 P-B5 12 Pxn Pxp 13 Bxp PxB 14 QxBP B-R4 15 N-QB3 B-K2 16 N-B3 Q-N3ch 17 K-R1 N-N5 18 N-Q5 Q-B4 19 N-B7ch K-Q2 20 QxQ BxQ 21 NxR RxN 22 P-KR3 N-B7ch 23 K-R2 Nxp 24 Nxpch K-K3 25 N-Q3 B-Q3ch 26 B-B4 B-K7 27 KR-K1 BxN 28 BxB Bxp 29 QR-B1 KxB 30 RxB P-B4 31 R-Q1ch K-K3 32 R-B7 R-QN1 33 P-QN3 P-N3 34 RxP R-QB1 35 R-KN7 K-B3 36 R-QR7 R-B3 37 R-K1 P-N4 38 K-N1 N-B6 39 P-QR4 R-N3 40 P-R5 R-Q3 41 R-QN7 N-Q4 42 R-Q1 K-K4 43 P-QN4 P-B5 44 P-N5 Pxp 45 RxP K-K3 46 P/1xN RxR 47 RxR KxR 48 K-B2 Black Resigns. 1-0

Bruce Johnson - Bob Burley FALKBEER COUNTER GAMBIT 1 e4 e5 2 f4 d5 3 exd5 c6 4 Nc3 exd5 5 Nf3 e4 6 Nd4 Nf6 7 d3 Bb4 8 Bd2 O-O 9 a3 Bc5 10 Nb3 Bb6 11 h3 Re8 12 d4 e3 13 Bc1 Ne4 14 Qf3 Qh4+ 15 Ke2 Ng3+ 16 Kd1 Nxf1 17 Bxe3 Nc6 18 Bb5 Bf5 19 Kd2 Be4 20 Nxe4 dxe4 21 Qe2 Nc3 22 Qf2 Nf5 23 Qxh4 Nxf4 24 d5 Bxe3+ 25 Kxe3 Nf5+ 26 Af2 e3+ 27 Kf1 a6 28 White Resigns. 0-1 Bruce calls this a "typical ferocious Burley attack." Having been the victim myself on occasion I can only agree. - ED

PL Name	Rating	RD1	RD2	RD3	RD4	RD5	Score
1 Marc Lynn	2044	W6	W2	W4	W3	W7	5-0
2 Dan Joelson	1473	W3	L1	W8	D4	W6	3½-1½
3 Richard Cohen	1769	L2	W5	W6	L1	W8	3-2
4 Bruce Johnson	1828	W7	W8	L1	D2	L5	2½-2½
5 John Ott	1615	L8	L3	D7	D6	W4	2-3
6 Fred Betz MT	1645	L1	W7	L3	D5	L2	1½-3½
7 Les Haynes	1575	L4	L6	D5	W8	L1	1½-3½
8 Jack Jones	1644	W5	L4	L2	L7	LF	1-4

3 B-N5 P-QR3 4 B-R4 N-B3 5 O-O N xP 6 R-K1 N-B4 7 NxP NxN 8 RxNch B-K2 9 N-B3 O-O 10 P-Q4 NxB 11 N xN P-QN4 12 N-B3 B-N2 13 Q-N4 P-Q3 14 R-K2 P-KB4 15 Q-N3 P-N5 16 N-R4 B-KB3 17 Q-N3ch K-R1 18 P-Q B3 R-K1 19 Q-B2 B-B3 20 P-QN3 Bx N 21 PxR RxR 22 QxR PxP 23 Q-Q3 Q-K1 24 B-K3 QxP 25 QxBP R-QN1 26 Q-K4 P-B4 27 R-N1 R-K1 28 P-N3 RxQ 29 R-N8ch R-B1 White Resigns. 0-1

Place Name	Rating	1	2	3	4	5	Score
1 Jim Chester MT	1444	x	1	1	1	1	4-0
2 Ty Griffin	1315	0	x	1	1	½	2½-1½
3 L. Partridge	940	0	0	x	1	1	2-2
4 Keith Parker	1080	0	0	0	x	1	1-3
5 Jim Gunderson	895*	0	½	0	0	x	½-3½

RD1 BD3 Dan Joelson-Dick Cohen ENGLISH OPENING 1 P-QB4 P-K4 2 N-QB3 N-KB3 3 N-B3 P-Q3 4 P-KN3 P-KR3 5 P-Q3 P-B3 6 B-N2 B-K2 7 O-O O-O 8 B-K3 B-K3 9 Q-N3 Q-B2

10 R-B1 QN-Q2 11 P-Q4 N-N5 12 B-Q2 Q-N3 13 P-Q5 B-B4 14 QxQ NxQ 15 P-K4 B-Q2 16 P-N3 P-R3 17 R-K1 R-B1 18 P-R3 N-B3 19 B-K3 P-B4 20 P-N4 NxP 21 PxP NxB 22 PxP BxP 23 RxN B-R6 24 R-Q1 B-N7 25 R-Q3 R-K1 26 N-Q1 R-B8 27 R-K1 B-R8 28 N-Q2 B-R5 29 N-N3 BxN 30 RxB R-B1 31 R xP B-B6 32 R-B1 B-Q5 33 R-N3 R-R8 34 R-R3 R-R1 35 R-K1 N-R4 36 B-B1 NxP 37 RxN RxP 38 N-K3 R-B1 39 R-K2 R-R8 40 N-B2 R-N8 41 R-K1 RxR 42 NxR R-B8 43 N-B3 B-N7 44 K-N2 P-R4 45 N-Q2 P-R5 46 N-B4 B-K5 47 R-R3 R-B7 48 N-K3 R-B6 49 RxP BxN 50 PxR RxP 51 P-Q6 P-KB3 52 P-Q7 Black Resigns. 1-0

RD3 BD1 Bruce Johnson-Marc Lynn ENGLISH OPENING 1 c4 Nf6 2 Nc3 g6 3 e4 d6 4 d4 Bg7 5 N f3 O-O 6 Be2 Nc6 7 d5 Ne5 8 Nxe5 dxe5 9 Be3 a e6 10 dxe6 Bxe6 11 Qc2 c6 12 f3 Nh5 13 g3 f5 14 Rd1 Qe7 15 Kf1 f4 16 Bf2 Bh3+ 17 Kg1 Qg5 18 g4 Nf6 19 Bc5 Rf7 b 20 Bf1 Nxb4 c 21 fx g4 Bxg4 22 Qg2 Bh6 23 h4 d Qh5 24 Rd3 b6 25 Bf2 f3 White Resigns. 0-1 a Marc said later that 9 Bg5 h6 10 Be3 e6 11 Qd2 Kh7 12 O-O-O was preferable. b Played after long thought, in part to prevent Be7. He also looked at h5. c If 20...Bxf1 then 21 h4. d 23 Rd3 or 23 h3 would be better. (Notes by Bruce Johnson)

RD3 BD3 Dan Joelson-Jack Jones ENGLISH OPENING 1 P-QB4 P-QB4 2 N-QB3 N-QB3 3 P-KN3 N-B3 4 B-N2 P-KN3 5 P-K3 B-N2 6 N-K2 O-O 7 P-Q4 PxP 8 NxP P-K3 9 O-O P-QR3 10 P-N3 Q-B2 11 B-N2 P-N3 12 R-N1 B-N2 13 N-K4 KNxN 14 BxN N-N5 15 BxB QxB 16 B-R3 P-R4 17 Q-Q2 P-Q4 18 R-N2 Q-K2 19 R-B2 QR-B1 20 KR-B1 KR-Q1 21 PxP! RxR 22 RxR RxP 23 N-B6 Q-Q3 24 QxP R-B4 25 R xR RxP 26 Q-N8ch! QxQ 27 NxQ B-K4 28 N-Q7! B-Q3 29 P-R4 P-B4 30 P-R5 B-B2 31 P-R6 Black Resigns. 1-0

RD4 BD1 Marc Lynn-Richard Cohen PETROFF DEFENSE 1 P-K4 P-K4 2 N-KB3 N-KB3 3 NxP P-Q3 4 N-KB3 NxP 5 P-Q4 P-KR3 6 B-Q3 B-B4 7 O-O N-Q2 8 R-K1 N/2-KB3 9 N-R4 B-R2 10 P-KB3 P-KN4 11 PxN PxN 12 N-B3 P-QB3 13 B-KB4 Q-Q2 14 P-K5 PxP 15 BxP O-O-O 16 BxN B-N5 17 BxB RxR 18 BxR KxR 19 R-K4 P-R6 20 P-KN3 B-K2 21 Q-N4 P-KB4 22 Q-N8ch B-B1 23 QxBch K-B2 24 R-KB4 R-K2 25 QxBP Q-K1 26 R-K4 P-KR4 27 RxRch QxR 28 Q-K5ch Black Resigns. 1-0

RD5 BD2 Fred Betz-Dan Joelson SICILIAN 1 P-K4 P-QB4 2 N-KB3 P-Q3 3 P-Q4 PxP 4 NxP N-KB3 5 N-QB3 P-KN3 6 P-B3 B-N2 7 B-K3 O-O 8 Q-Q2 R-K1 9 O-O-O N-B3 10 N-N3 B-K3 11 K-N1 P-QR3 12 B-Q2 P-QR4 13 P-QR3 P-N5 14 N-R2 PxP! 15 PxP R-N1 16 N-B1 P-R4 17 P-R5 KN-Q2 18 B-N5 Q-B2 19 BxN QxN 20 B-Q4 QxP 21 Q-B3 BxB 22 RxR Q-R6 23 Q-R1 QxQ 24 KxQ R-B1 25 R-Q2 N-B4 26 N-Q4 B-B5 27 N-R2 P-R5 28 R-N1 RxRch 29 KxR R-N1ch 30 K-R1 P-R6 31 N-B6 R-N7! 32 N-N5 N-R3 33 R-Q4 NxN 34 RxB NxPch White Resigns. 0-1

RD1 RR Jim Chester-Ty Griffin QUEEN PAWN 1 P-Q4 P-K3 2 N-KB3 N-QB3 3 P-K3 P-Q4 4 B-Q3 P-K4 5 PxP B-KB4 6 B-N5 Q-Q2 7 N-QB3 P-R3 8 BxN QxB 9 QxP QxQ 10 NxQ O-O-O 11 P-K4 BxN 12 P xB N-K2 13 NxN BxN 14 B-Q2 KR-K1 15 O-O-O B-R5 16 P-B4 BxP 17 KR-B1 B-R2 18 B-B3 B-K6 19 B-Q2 BxB 20 RxB RxR 21 KxR R-Q1ch 22 K-K3 K-Q2 23 P-B5 R-K1 24 R-Q1ch K-K2 25 P-KR4 P-N3 26 P-B6ch K-B1 27 K-B4 P-KR3 28 R-Q7 P-N4 29 PxP PxP 30 K-B5 K-N1 31 RxP P-N5 32 KxP RxP 33 K-B4 R-QN4 34 R-B8ch K-R2 35 P-N3 K-N3 36 P-K5 R-Q4 37 R-KN8ch K-R3 38 K-B5 K-R2 39 R-N7ch K-R1 40 RxP K-N1 41 K-K6 R-Q1 42 RxP R-K1ch 43 R-K7 R-QB1 44 P-B4 R-B3ch 45 K-B5 R-B1 46 K-N6 R-B1 47 R-N7ch K-R1 48 P-B7 P-R4 49 R-R7ch Black Resigns. 1-0

Matthew Guthrie	MS 1944	David Prouty	MS 1497	Tom Vanzandt	DL 1263
Kip Stubberud	HL 1941	Dallon Thomas	BL 1492	Steve Sherrod	HL 1262
Bill Lynch	BL 1878	Ray Jorgenson	PL 1484	Tim Montler	MS 1261
Don Kendall	BT 1869	Sam Hoomiratana	BL 1472	Ray Johnston	DL 1258
Andy Shuck	BZ 1781	Duane Hildenstab	HL 1470	Darrell Smith	DL 1257
Bill Greer	AH 1769	Ed Nash	BL 1464	Matt Bean	BZ 1227
Ken Shinn	BL 1764	Chuck Chapman	BL 1457	Dick Mecklenberg	BZ 1226
Gordon Shuck	WH 1756	Richard Park	GF 1456	Matt McCafferty	MS 1221
Jim Magorian	HL 1740	Coyle Long	BT 1455	Dave Sparks	BZ 1207
Bob McKinnon	GF 1725	Tom Booth	MS 1450	Jamshid Golzy	BZ 1206
Gary Ritchie	BL 1718	Jim Chester	BZ 1444	Gary Hewitt	BZ 1200
Keith Bayern	BZ 1691	Mike Foster	HL 1430	Derrick Watson	MS 1196
Roberto Barajas	GF 1688	Lyle Petersen	PD 1404	Mark Wood	HL 1196
Joe Wingard	BZ 1685	Tim Eichhorn	BZ 1383	Paul Hughes	BZ 1186
Jim Loy	CF 1674	Perry Moler	CO 1381	Jeff Nichenko	MS 1182
Bob Jordan	BZ 1671	Claude Laubach	CT 1370	Mike Hoth	BZ 1161
Shaun Sullivan	AN 1668	Ray Anderaon	WS 1369	Glen Brittingham	DL 1159
Howard Hoene	BZ 1663	Ed Peterson	GF 1368	Guy Allies	DL 1139
Mike Jensen	MS 1658	Chris Brown	DL 1364	Bill Dickey	BZ 1136
Fred Betz	BL 1645	Terry Mitchell	GL 1362	Dale Gross	MS 1121
Roger White	MS 1617	Doug Brock	MS 1357	Tom Laceky	HL 1091
Joe Lovett	MS 1614	Martin Staab	MS 1345	Joe Schabauker	MS 1088
Tony Mattina	MS 1589	Bob Perry	KS 1342	Jay Ketch	MS 1084
Ted Anderson	GF 1571	John Hay	MS 1339	Lou Polcari	BL 1077
Don Norrid	HL 1561	Steve Saroff	MS 1338	Jim Denend	DL 1072
Mark Laceky	HL 1560	John Austreng	GF 1336	Mark Zylawy	MS 1067
Richard Stevens	BL 1556	Neale Sikveland	FP 1333	Bob Pitman	MS 1062
Garroll Salmons	CF 1554	Jaye Mathison	BZ 1329	Tyler Schulz	BZ 1018
Jack Reddy	HL 1551	Ed Sheehan	BZ 1318	Craig Stroup	BZ 1000
Doug Hansen	BB 1545	Steve Margrave	MS 1305	Mike Stroup	BZ 988
Leslie Gunderson	BZ 1541	Daniel Britt	MS 1295	Adam Laceky	HL 969
John Wyrzykowski	BL 1535	Dale Dey	BZ 1291	Scott Purl	MS 968
Tom Romine	BL 1520	Chuck Borland	BZ 1289	Darrin Gilchrist	BZ 962
Jim Joseph	DL 1517	Randolph Hagen	BZ 1286	Troy Lemieux	BZ 910
Bob McKean	MS 1510	Bill McBroom	MS 1280	Hugh Safford	BZ 907
Merv Mecklenberg	BL 1507	August Shaver	KS 1277	Greg Buls	MS 877

MS=Missoula,HL=Helena,BL=Billings,BT=Butte,BZ=Bozeman,AH=Ashland,WH=Whitehall,GF=Great Falls,CF=Columbia Falls,AN=Anaconda,BB=Busby,DL=Deer Lodge,PL=Plains,PD=Paradise,CO=Columbus,CT=Carter,WS=Warm Springs,KS=Kalispell,GL=Glendive,FP=Fort Peck.

Ratings include all events through and including the MSU Open of January 17-18, 1981.

\*\*\*\*\*

(continued from page 3) 29 PxP PxP 30 R-N1 Q-Q1 31 R-R5 R-R1? 32 RxR NxR 33 QxRP Q-K1 34 R-N7 N-B2 35 RxN Q-N1 36 P-B4 QxR 37 Q-R8ch K-N2 38 P-B5!! Q-N3 39 PxR QxPch 40 K-R1 Q-R8ch 41 B-N1 QxP 42 PxP KxP 43 QxP Black Resigns. 1-0

\*\*\*\*\*6\*\*\*\*\*

PRESORTED  
FIRST CLASS

Montana Chess  
Association  
MONTANA CHESS NEWS  
Editor  
William M. Lynch  
1144 Harvard Ave.  
Billings MT 59102