

# MONTANA CHESS NEWS

FALL 1981

VOLUME VI ISSUE 5

## MONTANA STATE UNIVERSITY OPEN

Sponsor - MT Chess Assoc.

January 16-17, 1981

Place: Wilson Hall, MSU Campus, Bozeman, MT 59715. Due north of the Student Union.  
Registration: 9:00am, Jan. 16. USCF & MCA membership req'd, may join at site. \$20 Adult, \$10 Junior, \$5 Tournament. Entry Fees = \$4 Adult, \$3 Jr., new players free.  
Rounds: 5 Round Swiss System. 10:00am, 2:30pm, 7:00pm / 9:00am, 2:00pm.  
Time Control: 45 moves / 2 hours per player, then 25 moves / hour thereafter.  
Prizes: Trophies or cash prizes according to entries.  
Director: Jim Chester, 423 N. 16th Avenue, Bozeman, MT 59715.

\*\*\*\*\*

## VALENTINE OPEN

Sponsor - University-Community Chess Club

February 13-14, 1981

Place: Room 362, Social Science Bldg., Univ. of MT Campus, Missoula, MT 59801.  
Registration: 9:00-9:30am, Feb. 13. USCF membership req'd, MCA membership req'd except for new players, see above for rates. Entry Fees = \$5 in advance, \$8 at the door. Mail entries to address given below. New players free.  
Rounds: 5 Round Swiss System. 9:30am, 2:00pm, 7:00pm / 9:00am, 2:00pm.  
Time Control: 30 moves / 90 minutes per player, then 25 moves / hour thereafter.  
Prizes: Trophies 1st, 2nd, 3rd, Best Under 1600, 1400, 1200.  
Director: Bill McBroom, 2312 Raymond, Missoula, MT 59802.  
Notes: Limited smoking (in a separate room which your opponent must agree to go to)

\*\*\*\*\*

## 6TH COPPER KINGS OPEN

Sponsor - Montana Chess Association

Early March?

\*\*\*\*\*

## UCCC SPRING OPEN

Sponsor - University-Community Chess Club  
(Same details as Valentine Open)

April 24-25, 1981

\*\*\*\*\*

In order to give everyone time to plan for the MSU Open, I am putting this newsletter in the mail without the reports on the MSU Autumn Open and the Heraldica Satellite Open for which I have the material, but haven't the typing done. Full coverage of these events as well as the Bozeman Closed RR will appear in a January-February issue in about two weeks which will put MCN back on schedule. Meanwhile, I can report that Danny Barash, a visiting junior player from Israel took first on tie-breaks over Matt Guthrie in the MSU Autumn Open with  $4\frac{1}{2}$  point after they drew their third round game and Kip Stubberud fashioned a perfect 4-0 score to take clear first in the Heraldica Satellite Open when the Heraldica Tournament of Champions sections failed to draw enough players and everyone, a total of 30 people, played in the Satellite. Another newcomer to Montana tournaments, Charles Ahern placed clear second with a  $3\frac{1}{2}-\frac{1}{2}$  score. The Bozeman Closed RR was won by Andy Shuck who lost only to Al Williams who was tied at 5-2 with Jim Loy for 2nd-3rd. The results of several Missoula tournaments and the Rimrock Open are found on pages 2 and 3. All in all a very busy fall for Montana's Chess players.

UCCC 2ND SUMMER TOURNAMENT

September 1981

Romie Carpenter-Matt Guthrie PIRC

P1 Name	Rating	RD1	RD2	RD3	RD4	TOT	T-B
1 Mike Jensen	1776	W8	W2	L4	W5	3.0	5
2 Romie Carpenter	1565	W9	L1	W12	W6	3.0	3½/7
3 Roger White	1638	W12	L6	W9	W4	3.0	3½/5
4 Joe Lovett	1630	W7	D5	W1	L3	2.5	5
5 Bill McBroom	1360	W10	D4	W6	L1	2.5	4½
6 Brian Hattel	1405	W11	W3	L5	L2	2.0	5
7 Robert Taylor	1325	L4	L10	W11	W9	2.0	3/2
8 John Hay	1351	L1	L9	W10	W12	2.0	3/1½
9 Larry Austin	1300	L2	W8	LF	L7	1.0	6½
10 Sam Stem	1168	L5	W7	L8	LF	1.0	6
11 Tim Hovet	1282	L6	L12	L7	W10	1.0	5½
12 Steve Saroff	1338	L3	W11	L2	LF	1.0	3

1 P-K4 P-Q3 2 P-Q4 N-KB3 3 N-QB3 P-KN3 4 P-B4 B-N2 5 N-B3 O-0 6 B-K3 P-QN3 7 Q-Q2 B-N2 8 P-K5 N/3-Q2 9 B-B4 PxP 10 BPxP P-K3 11 B-KR6 P-QB4 12 BxB KxB 13 O-0-0 N-QB3 14 P-Q5 N/3xP 15 NxN NxN 16 PxP QxQch 17 RxQ NxB 18 P-K7 KR-K1 19 R-Q7 B-B3 20 R-B7 KR-QB1 21 RxR RxR 22 R-Q1 R-K1 23 R-K1 N-Q3 24 P-KN4 P-B4 25 R-K6 N-K5 26 PxP PxP 27 RxB NxN 28 PxN RxP 30 R-Q6 P-B6 31 R-Q3 P-B7 32 R-R3 R-KB2 33 RxR KxR 34 K-K2 K-K3 35 KxP K-Q4 36 K-K3 K-R5 37 K-Q2 P-KR3 38 P-KR3 P-KR4 39 P-KR4 P-N4 40 K-K3 KxP 41 K-B4 KxP 42 K-N5 K-N7 43 KxP P-B5 44 K-N6 P-B6 45 P-R5 P-B7 White Resigns.

UCCC 1ST FALL TOURNAMENT

October 1981

P1 Name	Rating	RD1	RD2	RD3	RD4	TOT	T-B
1 Matt Guthrie	1976	W11	W7	W2	W4	4.0	
2 Tony Mattina	1759	W8	W10	L1	W9	3.0	10
3 Bob McKean	1534	W9	L4	W8	W5	3.0	8½
4 Mike Jensen	1776	W12	W3	D5	L1	2.5	5
5 Joe Lovett	1633	W15	W6	D4	L3	2.5	4½
6 Tim Hovet	1282	Bye	L5	W10	D7	2.5	4
7 Romie Carpenter	1565	W14	L1	W11	D6	2.5	3
8 John Hay	1339	L2	W13	L3	W11	2.0	4/8
9 Luther Henley	NON	L3	W12	W14	L2	2.0	4/7
10 Dan Britt	1440	W14	L2	L6	W12	2.0	3
11 Brian Hattel	1405	L1	W14	L7	L8	1.0	4½
12 Bill McBroom	1360	L4	L9	W13	L10	1.0	4
13 Perry Backus	NON	L10	L8	L12	W14	1.0	3
14 Steve Votruba	NON	L7	L11	L9	L13	0	3
15 Larry Austin	1300	LF	WD	WD	WD	0	0

Tim Hovet-Romie Carpenter KING PAWN 1 P-K4 N-KB3 2 N-QB3 P-K4 3 N-KB3 N-QB3 4 P-KN3 B-N5 5 B-N2 P-Q3 6 O-0 BxB 7 NPxB NxP 8 NxP! NxN 9 BxB O-0 10 P-Q4 N-B5 11 Q-Q3 P-Q4 12 BxRPch K-R1 13 B-K4 R-K1 14 B-KN2 P-QB3 15 Q-B3 Q-K2 16 Q-R5ch K-N1 17 B-B4 P-QN3 18 QR-K1 QxR 19 RxQ RxRch 20 B-B1 B-R3 21 K-N2 N-K6ch 22 PxN BxBch 23 K-B2 R-R8 24 Q-N4 B-N4 25 B-K5 P-B3 26 BxP R-B8ch! 27 K-N2 RxB 28 P-K4 R/1-KB1 29 P-K5 B-B8ch 30 K-N1 R-B7 31 P-K6 R-N7ch 32 K-R1 R/1-B7 33 P-K7 RxPch 34 K-N1 R-N7ch 35 K-R1 K-B2 36 Q-Q7 R-R7ch Drawn. ½-½

UCCC 2ND FALL TOURNAMENT

December 1981

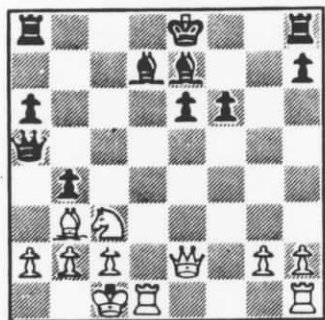
P1 Name	Rating	RD1	RD2	RD3	RD4	TOT	T-B
1 Matt Guthrie	1976	W13	W12	W5	W2	4.0	
2 Bob McKean	1534	W14	W3	W8	L1	3.0	5½
3 Tony Mattina	1759	W15	L2	W9	W11	3.0	4/8
4 Dan Britt	1454	L7	W16	W6	W5	3.0	4/6½
5 Roger White	1648	W6	W9	L1	L4	2.0	5
6 Ron Erickson	1312	L5	W7	L4	W15	2.0	4/8
7 Gary Fisher	NON	W4	L6	L10	W16	2.0	4/7½
8 Mike Jensen	1776	W10	W11	L2	WD	2.0	4/7
9 Brian Hattel	1431	W18	L5	L3	W14	2.0	3½/7
10 Bill McBroom	1350	L8	D14	W7	D13	2.0	3½/6
11 Romie Carpenter	1589	W17	L8	W15	L3	2.0	3
12 Joe Lovett	1630	W16	L1	W13	WD	2.0	2
13 John Hay	1375	L1	W17	L12	D10	1.5	4½
14 Randolph Hagen	1305	L2	D10	W18	L9	1.5	4
15 Steve Saroff	1330	L3	W18	L11	L6	1.0	
16 Tim Hovet	1282	L12	L4	D17	L7	.5	4½
17 Sam Stem	1173	L11	L13	D16	WD	.5	2
18 Perry Backus	UNR	L9	L15	L14	WD	0	

Mike Jensen-Bob McKean KING PAWN 1 P-K4 P-K4 2 N-KB3 N-KB3 3 P-Q3 N-B3 4 P-KN3 B-B4 5 B-N2 P-Q3 6 O-0 B-Q2 7 B-K3 P-QN3 8 P-QB3 BxB 9 PxP Q-B1 10 N-Q2 B-K6 11 Q-R4 BxB 12 QxNch N-Q2 13 KxB O-0 14 N-R4 N-B3 15 RxN PxR 16 N-B5 K-R1 17 R-KB1 Q-Q1 18 N-B3 P-KR4 19 N-R4 R-KN1 20 N-R6 R-N2 21 R-B5 Q-KB1 22 RxP R-R2 23 N/R4-B5 R-B1 White Wins. 1-0

Mike Jensen-Bob McKean PHILODOR 1 P-K4 P-K4 2 N-KB3 P-Q3 3 P-Q4 PxP 4 NxP P-KN3 5 B-QB4 B-N2 6 O-0 N-QB3 7 NxN PxN 8 N-B3 N-K2 9 B-N5 O-0 10 Q-Q3 B-K3 11 QR-Q1 K-R1 12 P-KB4 BxB 13 QxB P-KB3 14 B-R4 P-QB4 15 R-B3 Q-Q2 16 P-K5 N-B4 17 PxBP BxB 18 BxB QxB 19 N-Q5 Q-K3 20 Q-B3 N-Q5 21 NxR N-K7ch 22 K-B2 NxQ 23 RxN QxN 24 P-KN3 R-QN1 25 R-K1 RxP 26 R-K8ch K-N2 27 R/3-K3 RxPch 28 K-B3 R-B3 29 R/8-K7ch White Resigns. 0-1 It is rare to have the opportunity for revenge so soon in tournaments.

Doug Fletcher took first in a non-rated beginners session with a score of 3½ followed by Stewart Johnson & Steve Votruba - 3; Gregg Ford, Tom Mossted & Dave Haugen - 2; Robert Motley - 1½; Cris Softich, Larry Brown, Evan Caster & Fred Shafizadeh - 1; and Van Wickman - 0.

P1 Name	Rating	RD1	RD2	RD3	RD4	RD5	Tot	T-B
1 Bill Lynch	1867	W14	D7	W5	W2	W4	4.5	
2 Marc Lynn	2188	W11	W3	W4	L1	W5	4.0	
3 Gordon Shuck	1737	W12	L2	W7	D6	W9	3.5	
4 Danny Barash	1998	W10	W6	L2	W8	L1	3.0	9.5
5 Dan Polette	1012	W8	W14	L1	W7	L2	3.0	9.0
6 Pat Hauptman	1712	W13	L4	W9	D3	D8	3.0	7.5
7 Russ McCord	NON	W9	D1	L3	L5	W10	2.5	9.0
8 Fred Betz	1652	L5	W12	W13	L4	D6	2.5	7.0
9 Matt Janke	996	L7	W10	L6	W11	L3	2.0	7.0
10 Robert Perry	1342	L4	L9	W14	W13	L7	2.0	5.5
11 Charles Chapman	1436	L2	L13	W12	L9	W14	2.0	4.5
12 Craig Stroup	1100	L3	L8	L11	D14	W13	1.5	
13 Susan Pounds	1091	L6	W11	L8	L10	L12	1.0	
14 Chuck Borland	1273	L1	L5	L1	D12	L11	.5	



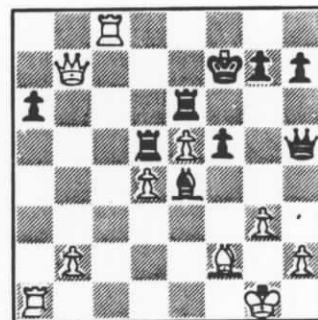
Marc Lynn-Danny Barash SICILIAN

1 e4 c5 2 Nf3 e6 3 d4 cxd4 4 Nx  
d4 Nf6 5 Nc3 d6 6 Bc4 a Nc6 7 B  
e3 Be7 8 Qe2 a6 9 0-0-0 Qc7 10 B  
b3 Bd7 b 11 f4 c b5 12 f5 d Nxd4  
e 13 Bxd4 f b4 14 e5 dxe5 15 Bx  
e5 Qa5 16 fxe6 fxe6 17 Bxf6 gxf6

DIAGRAM 18 Rxd7! g Qe5 19 Qf3! i f5 j 20 Qxa8+ Kxd7 21 Ba4+! Kc7 22  
Qc6+ Kb8 23 Qb6+ Kc8 24 Qxa6+ Kb8 25 Qb6+ Kc8 26 Qc6+ Kb8 27 Qb6+ K  
c8 28 Nb5 Bg5+ 29 Kb1 Kd7 30 Na7+ Black Resigns. k 1-0

a Diverging from the main line of the Scheveningen Variation and giving Black the option of transposing to the Najdorf with 6...a6 or the Sozin with 6... Nc6. b A standard position in the Velimirovic Attack against the Sozin whwerin Black has chosen to leave his King in the center as it is seldom safer on g8. c 11 g4 is considered the main alternative here, but the text move has not been refuted. d White seeks to break up Black's central mass in front of the King. e Perhaps 12...e5 13 Nxc6 Bxc6 but then White has the hole at d5 and can try g4-g5. f White observes that the knight has no good square and chooses to play actively rather than make a passive retreat. g Having broken up the pawn formation and with the Black Queen diverted to the wing, White finds the way to exploit Black's exposed King. h If 18...Kxd7 then 19 Qxe6+ and White gets at least two Bishops and a pawn for the rook if not a mate. i Not settling for winning the exchange after Qxe5 fxe5 20 Rld1 bxc3 j Black chooses to protect the King Rook, but all of his choices are bad. If 19...Kxd7 20 Qb7+ Ke8 21 Qxa8+ or 20...Kd6 21 Rd1+. k Black is helpless against the Knight fork at c6. (Notes by Bill Lynch)

Bill Lynch-Marc Lynn RUY LOPEZ 1 e4 e5 2 Nf3 Nc6 3 Bb5 a6 4 Ba4 N  
f6 5 0-0 Be7 6 Re1 b5 7 Bb3 0-0 8 c3 d5 9 exd5 Nxd5 10 Nxe5 Nxe5 11  
Rxe5 c6 12 d4 Bd6 13 Re1 Qh4 14 g3 Qh3 15 Be3 Bg4 16 Qd3 Rae8 17 N  
d2 Re6 18 Qf1 Qh5 19 a4 f5 20 f4 Bxa4 21 Rxa4 Re8 22 Bxd5 cxd5 23 Q  
f2 Bc7 24 c4 Rd8 25 cxd5 Rxd5 26 Nc4 Qe8 27 R1a1 Qb5 28 Ne5 Bh5 29  
Qc2 Qe2 30 Qb3 Bf3 31 Bf2 Be4 32 Rc4 Bxe5 33 fxe5 Qh5 34 Rc8+ Kf7  
35 Qb7+ DIAGRAM Kg6? (An unfortunate error in a complicated position  
brought on by time pressure. After 35...Re7 White must play very  
accurately to stave off the twin mate threats starting with ... Qf3  
and ...Qh3 and Black may have the better game.) 36 Rg8! Qh6 37 Qc8  
Rb6 38 Qe8+ Kg5 39 Be3+ Black Resigns. 1-0 (A very exciting Marshall attack! - B. Lynch)



Danny Barash-Pat Hauptman POLISH OPENING 1 P-QN4 P-K4 2 B-QN2 P-Q3 3 P-K3 N-KB3 4 N-KB3  
B-K2 5 B-K2 0-0 6 0-0 P-QR3 7 P-QB4 N-K1 8 P-Q4 P-K5 9 N3-Q2 P-KB4 10 P-KB3 KPXP 11 NxBP  
N-KB3 12 P-Q5 N-K5 13 N1-Q2 NxN 14 QxN B-B3 15 N-Q4 B-K4 16 B-Q3 P-KN3 17 QR-K1 P-QB4 18  
NPXP QPXP 19 N-K6 BxN 20 BxB B-B2 21 Q-QN2 Q-Q2 22 B-N7! R-Q1 23 B-R6 B-K1 24 RxP PxR 25  
BxP Q-KB2 26 B-K6 R-Q2 27 Q-N7 Mate. 1-0 A nice precise finish. It's too bad that Danny  
will only be with us a short time before returning home to Israel. He has developed his  
talent there through weekly club activities and monthly tournament play. Hopefully we can  
continue to develop such opportunities for our young players,

\*\*\*\*\* MONTANA'S RATED PLAYERS - 1981 ANNUAL LIST \*\*\*\*\*

Matt Guthrie	MS 2013	Don Norrid	HL 1553	Steve Margrave	MS 1275
Danny Barash	BZ 1998	Mark Laceky	HL 1553	Chuck Borland	BZ 1273
Kip Stubberud	HL 1913	Dallon Thomas	BL 1547	Mark Wood	HL 1264
Bill Lynch	BL 1867	Leslie Gunderson	MH 1545	Derrick Watson	MS 1260
Bill Greer	AS 1861	Dennis Burke	MS 1536	Matt McCafferty	MS 1246
Jim Loy	BZ 1791	Robert McKean	MS 1534	Dale Gross	MS 1244
Mike Jensen	MS 1776	Jim Chester	BZ 1526	Dave Sparks	BZ 1207
Jim Magorian	HL 1776	Al Williams	BZ 1514	Darrin Stacey	HL 1204
Andy Shuck	BZ 1772	Dave Prouty	MS 1501	Gary Hewitt	BZ 1200
Ken Shinn	BL 1772	Merv Mecklenberg	MS 1500	Tim Hovet	MS 1186
Tony Mattina	MS 1759	Dan Britt	MS 1454	Sam Stem	MS 1189
Joe Wingard	BZ 1745	Tim Eichhorn	BZ 1446	Mark Zylawy	MS 1177
Gordon Shuck	WH 1737	Brian Hattel	MS 1444	Steve Olson	MS 1175
Joe Lovett	MS 1726	Charles Chapman	BL 1436	Dan Marsh	BZ 1142
Pat Hauptman	BL 1712	Lyle Petersen	PD 1429	Kevin Darne	AB 1104
Gary Ritchie	BL 1692	Mike Poole	BT 1416	Craig Stroup	BZ 1100
Keith Bayern	BZ 1691	Bill McBroom	MS 1390	Susan Pounds	BZ 1091
Jim Ostby	FR 1688	David Stacey	HL 1380	Jay Ketch	BZ 1084
Howard Hoene	BZ 1687	Jim Skovron	GF 1369	John Small	BZ 1045
Bob Jordan	BZ 1652	John Hay	MS 1360	Sosha Perrin	MS 1016
Fred Betz	BL 1652	Steve Saroff	MS 1351	Dan Polette	BZ 1012
Roger White	SU 1638	Robert Taylor	MS 1347	Matt Janke	BZ 996
Romie Carpenter	MS 1601	Luther Henley	MS 1344	Darrin Gilchrist	BZ 962
Jim Pezzino	MS 1597	Tim Montler	MS 1324	Greg Buls	MS 877
Tom Booth	PL 1584	Ron Erickson	MS 1312	Scott Purl	MS 875
Duane Hildenstab	HL 1579	Randolph Hagen	MS 1305	Paul Zylawy	MS 827
Ray Jorgenson	PL 1571	Lawrence Austin	MS 1300		
Cole Long	BT 1560	Charles Ahern	MS 1300		

MS=Missoula, BZ=Bozeman, HL=Helena, BL=Billings, AS=Ashland, WH=Whitehall, FR=Froid, SU=Superior  
 PL=Plains, BT=Butte, MH=Manhattan, GF=Great Falls, AB=Alberton, PD=Paradise.

Ratings include all events through October 1981. Heraldica and Rimrock are not rated yet.

\*\*\*\*\*

Bill Lynch captured the 1981 Montana Grand Prix Title by winning the final event of the year, the Rimrock Open, to go with his first place in the Copper Kings Open, 2nd in the MSU Open and 3rd in the Montana Open for a total of 32 points. He narrowly edged Matt Guthrie, who place second with 29.67 points and Kip Stubberud, who finished third with 26.67 points. Others scoring points in the Grand Prix race were as follows:

4 Howard Hoene - 18; 5 Andy Shuck - 17; 6 Danny Barash - 13; 7 Joe Wingard - 11; 8-9 Andras Budinsky, Gordon Shuck - 10; 10 Jim Loy - 7.67; 11-14 Fred Betz, Maria Ivanka, Charles Ahern, Marc Lynn - 7; 15-16 Gary Ritchie, Joe Lovett - 5; 17-18 Coyle Long, Romie Carpenter - 3; 19-23 Tony Mattina, Ray Jorgenson, Mike Jensen, Dan Polette, Bob McKean - 2; 24-26 Tom Booth, Dallon Thomas, Pat Hauptman - 1.

\*\*\*\*\*

FIRST CLASS  
 PRESORTED

Montana Chess  
 Association  
 MONTANA CHESS NEWS  
 William M. Lynch  
 Editor  
 1144 Harvard Ave.  
 Billings MT 59102