



MONTANA CHESS NEWS

JANUARY 1980

VOLUME V ISSUE 1

LYNCH WINS THANKSGIVING OPEN

MONTANA STATE UNIVERSITY OPEN

Sponsor - MT Chess Assoc.

January 12-13, 1980

Place: Room 1-154 Wilson Hall, MSU Campus, Bozeman, MT 59715. (Directions will be posted at the MSU Student Union Building.)

Registration: 9:00-9:45am Saturday, January 12th. Entry Fee = \$5.00 Adult, \$2.00 Junior. Montana Chess Association and US Chess Federation membership required, may join at site. MCA - \$3 Adult, \$2 Junior. USCF - \$20 Adult, \$10 Junior, \$2.50 Participating Junior. COMBINED - \$20 Adult, \$10 Junior, \$4 Participating Jr.

Rounds: 5 Round Swiss System (All participants play five games, except byes may be required with an odd number of players.) 10:00am, 2:30pm, 7:00pm/10:00am, 2:30.

Time Control: 50 moves / 2 hours per player, then 25 moves / hour thereafter.

Prizes: Trophies - 1st, 2nd, 1st Junior.

Director: Jim Loy, 1207½ E. Main, Bozeman, MT 59715.

SEE BACK PAGE FOR ADDITIONAL TOURNAMENT ANNOUNCEMENTS !!!!!!!!!!!!!!!!!!!!!!!!!!!!!!!!!!!!!!!

USCF - Andras Adorjan and Zoltan Ribli, both of Hungary, who tied for third place in the Riga Interzonal Tournament also played to a 3-3 deadlock in a playoff match. This result was quite satisfactory to Adorjan who had the better Sonnenborn-Berger tie break at Riga and thus earned the right to play Robert Hübner of West Germany in the quarter-finals of the Candidates Matches.

The complete quarter-final pairings follow:

- | | | |
|------------------------------------|---|-----------------------------|
| 1 GM Victor Korchnoi (Switzerland) | - | GM Tigran Petrosian (USSR) |
| 2 GM Boris Spassky (USSR) | - | GM Lajos Portisch (Hungary) |
| 3 GM Mikhail Tal (USSR) | - | GM Lev Polugaevski (USSR) |
| 4 GM Robert Hübner (FRG) | - | GM Andras Adorjan (Hungary) |

The matches in the quarter-finals are won by the the player who has the lead after 10 games, and the semi-finals will pit the winner of Korchnoi-Petrosian against the winner of Tal-Polugaevski and the winner of Spassky-Portisch against the winner of Hübner-Adorjan.

USCF - Despite the rather poor performance of the American representatives in the Men's Interzonal Tournaments and the failure of any Americans to qualify for the playoffs, there was one very promising result. Diane Savereide of Santa Monica, CA placed fifth at the Women's Interzonal in Alicante, Spain with a score of 11-6, which is by far the best result by an American woman in many years. As a matter of fact, Diane was the star of the second half of the tournament as she scored seven points in her last eight games - in the process defeating three Soviet participants who finished 1st, 3rd and 4th.

MONTANA STATE JUNIOR CHAMPIONSHIP 1979

Tournament Report

October 27-28, 1979

Place	Name	Rating	RD1	RD2	RD3	RD4	RD5	Score	Tie-Breaks	Prizes
1	Leslie Gunderson	1417	W11	W7	W2	W3	W5	5-0		1st/2nd Team
2	Ed Sheehan	1282	W6	W4	L1	W8	W7	4-1	8	2nd/1st Team
3	Jaye Mathison	1263	W9	W8	W7	L1	W4	4-1	7	3rd/1st Team
4	Paul Hughes	1085	W5	L2	W12	W9	L3	3-2	9	2nd Team
5	Hugh Safford	861	L4	W13	W11	W6	L1	3-2	7½	
6	Mike Hoth	992	L2	W12	W10	L5	W8	3-2	6	
7	Ty Schulz	976	W12	L1	L3	W11	L2	2-3	9	
8	Mike Stroup	944	W10	L3	W13	L2	L6	2-3	8½	
9	Troy Lemieux	864	L3	L11	W10*	L4	W12	2-3	5½/10½	
10	Tom Gates	684	L8	L9*	L6	Bye	W11	2-3	5½/8½	1st Jr. Hi.**
11	Tim Tow	760	L1	W9	L5	LF	L10	1-4	6½/11½	
12	Gary Hewitt	563	L7	L6	L4	W13	L9	1-4	6½/11	**
13	Don Murray	440	Bye	L5	L8	LF	--	1-3	2	

Trophies were awarded for all prizes. *-Played between rounds to eliminate byes. **-1st Jr. High Team. Ratings listed are post-event ratings from USCF crosstable printout.

RD1 BD2 Ed Sheehan-Mike Hoth KING PAWN 1 e4 e5 2 Nf3 f6? 3 Bb5 a c6 4 Bc4 b5 b 5 Bxg8 Rxxg8 6 0-0 g5 7 d4 exd4 8 Nxd4 c5 9 Nxb5 a6 10 Re1! c axb5? 11 e5? d Rg6? e 12 exf6+ Kf7 13 Qd5+ Kxf6 14 Qxa8 Qc7 15 Qf3+ Kg7 16 b3 Kh6? 17 Bb2? g4? 18 Qxf8+ Kh5 19 Re5+ Rg5 20 Rxxg5+ Kxxg5 21 Qf6+ Kh5 22 Nd2 Bb7 23 Qf5+ Kh6 24 Qxxg4 b4? 25 Bg7++. 1-0.
a 3 Nxe5! is a well known trap: 3...fxe5?? 4 Qh5+ K37 5 Bc4+ d5! 6 Bxd5+ Kg6 7 h4 h5 8 Bxb7 winning at least a rook. b Or ...d5. c Setting a trap. d 11 Qd5 wins a rook. e 11... Bb7. Notes by Jim Loy.

RD3 BD2 Ed Sheehan-Leslie Gunderson RUY LOPEZ 1 e4 e5 2 Nf3 Nc6 3 Bb5 Nf6 4 Ng5 d5 a 5 Nc3 dxe4 6 Ngxe4 Nxe4 7 Nxe4 Qd5 8 Nc3? b Qxxg2 9 Rf1 Bg4 10 Bxc6+ bxc6 11 Ne2 Qxh2 c 12 d4 0-0-0 13 f3 Bh3 14 Rg1 exd4!! d 15 Bf4 Bb4+ 16 c3 dxc3 17 Qxd8+ e Rxd8 18 Bxh2 cxb2+ 19 Kf2 Bc5+ 20 Kg3 bxa1=Q 21 Rxa1 Bf5 22 Kg2 Rd2 23 Kf1 Bd6 f 24 Bg1 Bh3+ g 25 Ke1 Bb4 26 Rb1? Rb2+ and Black won. 0-1.
 Notes by Jim Loy.
a 4...h6. b 8 Qe2 or 8 Bxc6+. c Watch this Queen get into trouble and then magically get out. d A Queen Sacrifice! e What else? f 23...Bd3 trades more pieces. g 24...Bd3.

THANKSGIVING OPEN '79

Tournament Report

November 17-18, 1979

Dir: Bill Lynch

Place	Name	Rating	RD1	RD2	RD3	RD4	RD5	Score	Tie-Breaks	Prizes
1	Bill Lynch	1725	W19	W13	W5	W4	W3	4½-½		\$25
2	Roberto Barajas	1614	W14	W10	D3	D5	W6	4-1		\$15
3	Gordon Shuck	1687	D15	W12	D2	W7	D1	3½-1½	8½	
4	Bob McKinnon	1716	D12	W9	W18	L1	W10	3½-1½	7	
5	Kip Stubberud	1743	W16	W6	L1	D2	D8	3-2	10	
6	Don Kendall	(1600)	W7	L5	W14	W13	L2	3-2	7½/13½	
7	Don Norrid	1246	L6	Bye	W11	L3	W15	3-2	7½/11	\$10
8	Mike Jensen	1456	D18	D15	D10	W12	D5	3-2	6½	
9	Bob Perry	1152	Bye	L4	L12	W19	W13	3-2	4½	\$10
10	Mark Laceky	1237	W17	L2	D8	W18	L4	2½-2½	3	
11	Jack Reddy	1466	L13	W19	L7	D14	W18	2½-2½	5½	
12	Tony Mattina	1309	D4	L3	W9	L8	D14	2-3	9	
13	John Austreng	1212	W11	L1	W15	L6	L9	2-3	3	
14	Ray Jorgenson	1255	L2	W16	L6	D11	D12	2-3	7½/13	
15	Gary Ritchie	1294	D3	D8	L13	W16	L7	2-3	7½/12½	
16	Claude Laubach	1363	L5	L14	W17	L15	Bye	2-3	5½	
17	Andy Shuck	1519	L10	L18	L16	Bye	W19	2-3	3½	
18	Ed Peterson	NON	D8	W17	L4	L10	L11	1½-3½		
19	Garroll Salmons	1336	L1	L11	Bye	L9	L17	1-4		

Thanksgiving Open games follow on the next three pages:

RD1 BD1 Kip Stubberud-Claude Laubach GIUOCO PIANO 1 P-K4 P-K4 2 N-KB3 N-KB3 3 B-B4 B-B4 4 P-B3 KN-K2 5 P-Q4 PxP 6 N-N5 N-K4 7 B-N3 P-Q4 8 BPxP B-N5ch 9 N-QB3 BxNch 10 PxN/4-N3 11 PxP P-KR3 12 NxP! KxN 13 P-Q6ch K-B1 14 Q-B3ch N-B4 15 O-O QxP 16 P-QR4! N-R5 17 Q-K4 Q-KN3 18 B-R3ch N-K2 19 QxN Mate. 1-0

RD2 BD8 Jack Reddy-Garroll Salmons ENGLISH 1 P-QB4 P-K4 2 N-QB3 P-QB3 3 N-KB3 P-Q3 4 P-Q4 PxP 5 NxP N-KB3 6 P-KN3 P-KN3 7 B-N2 B-N2 8 O-O O-O 9 B-Q2 P-QB4 10 N-B2 Q-K2 11 B-B4 R-Q1 12 N-K3 B-K3 13 B-N5 P-KR3 14 BxN BxB 15 N/K3-Q5 BxN/Q5 16 NxN Q-K4 17 NxNch QxN 18 BxP N-Q2 19 BxR RxB 20 Q-Q2 N-K4 21 P-QN3 K-N2 22 Q-B4 Q-K3 23 QR-Q1 R-Q1 24 R-Q5 N-B3 25 Q-Q2 N-N5 26 RxBP PxR 27 QxR QxKP 28 Q-Q1 QxRP 29 Q-R1ch QxQ 30 RxQ P-R3 31 R-R5 N-B7 32 RxBP N-Q5 33 P-QN4 N-B7 34 P-N5 Black Resigns. 1-0

RD2 BD1 Don Kendall-Kip Stubberud SICILIAN 1 P-K4 P-QB4 2 N-KB3 P-Q3 3 P-Q4 PxP 4 NxP N-KB3 5 N-QB3 P-KN3 6 P-B4 QN-Q2 7 B-K2 B-N2 8 B-K3 P-QR3 9 Q-Q2 P-QN4 10 B-B3 P-K4 11 N-B6 Q-B2 12 N-N4 B-N2 13 O-O PxP 14 BxP Q-B4 15 K-R1 QxN 16 BxP Q-B5 17 P-K5 N-K5 18 Q-K3 N/2-B4 19 QR-K1 NxN 20 BxN N-Q4 21 Q-B2 O-O-O 22 R-K4 QxRP 23 B-N4 K-N1 24 QxP KR-B1 25 BxR RxB 26 QxRch BxQ 27 RxBch K-R2 28 P-R3 Q-N8ch 29 K-Q2 QxBP 30 R-K2 Q-QB5 31 R-B7 N-B5 32 RxN QxR 33 P-N3 Q-B8 White Resigns. 0-1

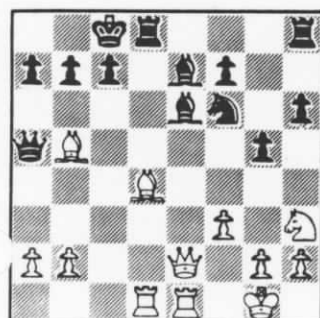
RD3 BD6 John Austreng-Gary Ritchie SICILIAN 1 e4 c5 2 Nf3 d6 3 d4 cxd4 4 Nxd4 Nf6 5 Nc3 g6 6 Bc4 Bg7 7 O-O O-O 8 Re1 a6 9 Bg5 b5 10 Bb3 Bb7 11 Qd2 b4 12 Nd1 Nxe4 13 Bxe7 Nxd2 14 Bxd8 Bxd4 15 Bg5 Nxb3 16 cxb3 Nc6 17 Re4 Rfe8 18 Rxe8+ Rxe8 19 Be3 f5 20 Kf1 Bxe3 21 Nxe3 a5 22 Rd1 Ba6+ 23 Kg1 f4 24 Nd5 Nd4 25 Nf6+ Kf7 26 Nxe8 Ne2+ 27 Kh1 Kxe8 28 Rxd6 Bc8 29 Rd5 f3 30 gxf3 Bb7 31 Re5+ Kf7 32 Kg2 Nd4 33 Rxa5 Bxf3+ 34 Kg3 Bh1 35 Ra4 h6 36 Kf4 g5+ 37 37/Ke5 Nc2 38 Ra7+ Kg6 39 Ra6+ Kh5 40 Kf6 Nd4 Black Resigns. 1-0

RD3 BD8 Tony Mattina-Bob Perry QUEEN PAWN 1 N-KB3 N-QB3 2 P-Q4 P-Q4 3 P-QB4 N-KB3 4 PxP NxP 5 P-K4 N-B3 6 N-QB3 P-K3 7 B-QN5 P-QR3 8 BxN ch NPxB 9 N-K5 B-Q2 10 O-O P-KR3 11 B-Q2 N-R2 12 Q-B3 P-B3?? See the DIAGRAM at right. 13 Q-R5ch! K-K2 14 Q-B7ch K-Q3 15 N-B4! Mate. 1-0



RD3 BD7 Jack Reddy-Don Norrid ENGLISH 1 P-QB4 P-K4 2 N-QB3 N-KB3 3 N-KB3 P-Q3 4 P-Q4 B-K2 5 PxP PxP 6 QxQ BxQ 7 NxP O-O 8 P-KN3 R-K1 9 N-KB3 P-QN3 10 B-N2 B-N2 11 O-O N-Q2 12 R-K1 N-B4 13 B-K3 N/4-K5 14 N-QN5 P-QB3 15 N-R3 B-B2 16 N-B2 P-QB4 17 N-KN5 P-KR3 18 NxN NxN 19 R/R1-B1 R/R1-N1 20 R/K1-Q1 N-Q3 21 N-R3 BxB 22 KxB N-B4 23 N-B2 NxNch 24 NxN B-R4 25 P-QN3 B-Q5 26 R-Q3 R-K3 27 R/1-Q1 R/1-K1 28 K-B1 BxN 29 PxP RxP 30 RxR RxR 31 R-Q8ch K-R2 32 R-Q7 K-N3 33 RxBP R-B6 34 R-R6 R-B8ch 35 K-B2 K-B4 36 RxP K-K4 37 R-B6 K-Q5 38 R-Q6ch K-B6 39 R-Q5 K-N5 40 R-Q7 R-QR8 41 R-N7ch K-B6 43 R xP KxP 44 R-N4 R-B7 45 R-R4 RxBP 46 RxP R-N5 47 P-N4 P-B5 48 P-N5 P-B6 49 R-R3 K-N7 50 R xP KxP 51 K-B3 K-Q5 52 P-R4 K-K4 53 K-N3 K-B4 54 P-K3 R-K5 55 K-R3 RxPch 56 K-N2 K-N3 57 K-R2 K-R4 58 K-N2 KxP White Resigns. 0-1

RD3 BD5 Mike Jensen-Mark Laceky QUEEN'S GAMBIT DECLINED 1 P-Q4 P-Q4 2 P-QB4 P-K3 3 N-QB3 N-KB3 4 B-N5 B-K2 5 P-K3 O-O 6 B-Q3 P-QN3 7 Q-B2 P-KR3 8 B-B4 B-N2 9 PxP NxP 10 NxN BxN 11 BxBP Q-Q2 12 P-K4 R-B1 13 PxP RxB 14 Q-N3 QxP 15 QxQ PxQ 16 N-K2 B-N5ch 17 K-Q1 N-B3 18 R-QB1 R/R1-QB1 19 P-QR3 B-K2 20 P-KN3 B-B3 21 B-R6 R-Q1 22 B-N7 R-Q3 23 BxN R/3xB 24 RxR RxR 25 K-Q2 P-QN4 26 K-Q3 P-QR4 27 R-QB1 R-B5 28 RxR NPxRch 29 K-B3 P-N4 30 P-N3 PxP 31 KxP K-B1 32 K-R4 B-Q1 33 K-N5 K-K2 34 K-B5 K-K3 35 P-QR4 P-B4 36 N-B1 B-K2ch 37 K-N5 B-N5 38 N-N3 B-B6 39 P-B3 P-N5 40 PxP PxP 41 K-B5 B-N5ch 42 K-B6 B-B6 43 N-B5ch K-B4 44 KxP P-R4 45 N-N3 B-K8 46 K-B6 P-R5 47 PxP BxP 48 P-Q5 K-B5 49 N-Q4 K-K4 50 N-K2 K-K5 51 P-Q6 K-B6 52 N-N3 K-N7 53 K-B7 KxP 54 N-B5 B-N4 55 P-Q7 P-N6 56 NxP KxN 57 P-B8=Q BxQ 58 KxB K-B5 59 K-B7 K-K5 60 K-N6 K-Q4 61 KxP K-B4 62 K-R6 K-B3 63 K-R7 K-B2 64 P-R5 K-B3 65 P-R6 K-B2 Draw.

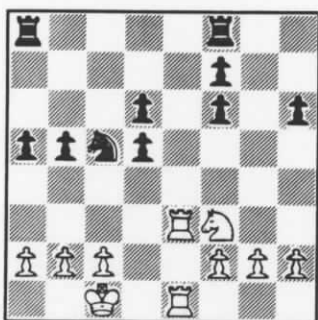


RD3 BD1 Kip Stubberud-Bill Lynch CENTER COUNTER 1 e4 d5 2 exd5 Nf6 3 Bb5+ a Bd7 4 Bc4 Bg4 b 5 f3 Bc8 c 6 Nc3 Nbd7 7 d4 d Nb6 8 Bd3 Nbx d5 9 Nxd5 Qxd5 10 Ne2 e5 11 O-O?! e exd5 12 Re1 Be7 13 Nf4 Qd6 14 Qe2 g5! f 15 Nh3 h6 16 Bd2 Be6 17 c3 O-O-O g 18 Rad1 Qb6 19 cxd5 Qxd5+ 20 Be3 Qa4 21 Bb5 Qa5! h 22 Bd4? i DIAGRAM Rxd4! 23 Rad4 Bc5 24 Red1 Rd8 25 Qe5 Bxd4 26 Rxd4 Qb6! j 27 Qxf6? k Rxd4 28 Nf2 Rd1+ 29 Bf1 Rxf1+! 30 Kxf1 Bc4+ 31 Kg1 Qxf6 32 Ne4 Qd4+ 33 Nf2 Qd2 34 Ne4 Qe1++. 0-1
a White can hold the pawn with 3 c4, but theory holds that Black gets sufficient counterplay with the gambit 3...c6 4 dxc6 Nxc6. b Attacking the d-pawn and provoking a weakness. (Notes cont'd next page.)

c An odd looking move which is best according to theory. It maintains the attack on the d-pawn and protects the b-pawn and the Bishop. d White must play 7 Qe2 Nb6 8 Qd3 to hold the pawn, but Black achieves an equal game due to the awkward placement of White's pieces. e Whites essays a gambit hoping to catch the Black King in the center. f Castling Kingside is taboo anyway, so Black opts to play actively and start some Kingside action of his own. g Black has achieved a slightly more active position with a pawn plus, disproving White's gambit on move 11. h Not Qxa2, when White has a strong attack with Ra1! i In time trouble already, White overlooks a combination. j Not 26...Rxd4 27 Bd7ch Rxd7 28 Qxa5. k What else? Black's discovered check threats coming up are horrible.

RD4 BD8 Claude Laubach-Gary Ritchie 1 e4 c5 2 Nf3 d6 3 d4 cxd4 4 Nxd4 Nf6 5 Bd3 g6 6 O-O Bg7 7 c3 O-O 8 Nd2 Nc6 9 N2f3 d5 10 e5 Nd7 11 Nxc6 bxc6 12 Re1 e6 13 Qc2 Qc7 14 Bf4 Nc5 15 h3 Rb8 16 b4 Nxd3 17 Qxd3 c5 18 a3 cxb4 19 cxb4 Bd7 20 Rac1 Qb7 21 Nd4 a6 22 Re2 Ba4 23 Rb2 Rfc8 24 Rxc8+ Rxc8 25 Rb1 Bb5 26 Nxb5 Qxb5 27 Qxb5 axb5 28 Bg3 Rc3 29 Ra1 Bh6 30 Kh2 Rc8 31 Ra2 Rc3 32 f3 Bc8 33 a4 bxa4 34 Rxa4 Rb3 35 Ra8+ Kg7 36 Rb8 Bd2 37 b5 Be3 38 Bh4 Bf4+ 39 Bg3 Be3 40 Bh4 g5 41 Bg3 h5 42 h4 gxh4 43 Bxh4 Kg6 44 Bf6 d4 45 Rg8+ Kf5 46 g4+ hxg4 47 fxg4+ Ke4 48 Kg2 d3 49 Rd8 Rxb5 50 Rd7 d2 51 Kf1 Rb1+ 52 Ke2 Re1++ 0-1

RD4 BD5 Tony Mattina-Mike Jensen QUEEN'S GAMBIT DECLINED 1 P-Q4 P-Q4 2 P-QB4 P-K3 3 N-QB3 N-KB3 4 N-KB3 N-Q2 5 PXP NXP 6 B-Q2 N-KB3 7 Q-B2 B-K2 8 Nxn Nxn 9 O-O-O B-Q2 10 K-N1 P-QB3 11 P-K4 N-KB3 12 P-KR3 P-QN4 13 N-K5 R-B1 14 R-B1 O-O 15 B-K3 P-QR4 16 NxB QxN 17 B-Q3 P-R5 18 P-KN4 KR-Q1 19 P-N5 N-K1 20 P-N6 RPXP 21 P-K5 P-QB4 22 PXP QxB 23 P-B5 QxQ 24 RxQ R-Q4 25 P-KB4 B-Q1 26 P-KR4 B-B2 27 P-R5 R/1-Q1 28 R/2-QB1 PXP 29 QR-N1 P-N3 30 K-B2 N-N2 31 R-R3 K-R2 32 R-N2 N-B4 33 B-N1 N-Q5ch 34 BxN RxB 35 R-B2 R-B5ch 36 R-B3 R/1-Q5 37 R-Q2 QRxRch 38 KxR RxP 39 R-B5 R-B5 40 RxP RxP 41 K-K3 P-N4 42 K-B3 K-N3 43 R-N4 BxP 44 RxP BxP 45 R-R8 P-N5ch 46 K-N3 B-K4ch 47 K-R4 R-B6 48 R-N8ch B-N2 49 RxB KxR 50 KxP P-N6 White Resigns. 0-1



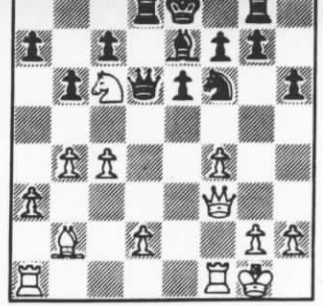
RD4 BD1 Bill Lynch-Bob McKinnon PHILODOR 1 e4 e5 2 Nf3 d6 3 d4 exd4 4 Qxd4 Nc6 5 Bb5 Bd7 6 Bxc6 Bxc6 7 Nc3 Nf6 8 Bg5 Be7 9 O-O-O O-O 10 Rhe1 h6 11 Bh4 Nd7 12 Bxe7 Qxe7 13 Nd5 Bxd5 14 exd5 a Qf6 15 Qc4? b Nb6 16 Qb3 c a5! 17 Re3 Nd7? d 18 Qb5 Nc5 19 Rde1 c6 20 Qc4 b5 e 21 Qd4! cxd5 f 22 Qxf6 gxf6 g DIAGRAM 23 Nd4 b4 24 Nf5 Kh7 25 Rh3 Kg6 26 Ne7+ Kg7 27 Nxd5 Rae8 28 Rg3+ Kh8 29 Rxe8 Rxe8 30 Nxf6 Rc8 31 Re3 a4 32 b3 axb3 33 axb3 Ne6 34 Nd5 Rb8 35 Re4 Nc5 36 Rxb4 Re8 37 Nf6 Re6 38 Rf4 Kg7 39 Nh5+ Kg6 40 Ng3 h5 41 h4 Re5 42 Rd4 Re6 43 Rd5 Re1+ 44 Kd2 Rg1 45 Rxd6+ Kh7 46 Rd5 Ne6 47 Rxh5+ Kg6 48 Rf5 Rxg2 49 h5+ Kg7 50 h6+ Kg6 51 h7 Kxh7 52 Rxf7+ Kg6 53 Rf3 Kg5 54 Ke3 Rg1 55 Ne4+ Kh4 56 c4 h Re1+ 57 Kd3 Kg4 58 Re3 Nf4+ 59 Kd2 Ra1 60 b4 Ra2+ 61 Kc3 Ne2+ 62 Kb3 Nc1+ 63 Kc3 Ne2+ 64 Kd3 Nf4+ 65 Kd4 Ra1 66 b5 Rd1+ 67 Kc5 Nd3+ 68 Kb6 Kf4 69 Re2 Rc1 70 c5 Rc4 71 c6! Rxe4 72 Rxe4+ Kxe4 73 c7 Nb4 74 c8=Q Nd5+ 75 Kc5 Black Resigns. 1-0

a To this point we were following Brasket(2342)-Lynch, '78 N.D.Open. I'd forgotten that Brasket played Qxd5 preferring to keep the pawns unbalanced, but theory holds that the position is equal either way. b Only to be chased again. Qb4 or Qd2 must be better. c If 16 Qxc7 Rec8 17 Qxb7 Rab8 then my King is nervous. d 17...a4 seems better, continuing to mount an attack by kicking the Queen around. e In light of what results, this would seem to be overly aggressive. f Not much better is 21...Qxd4 22 Nxd4 cxd5 23 Nxb5 though it does preserve the Kingside pawns. g Despite his pawn plus, Black's position is very difficult. His pawns are shattered, his King is exposed, and White controls the open file. h Black can defend against the tempting mate threats beginning with 56 Rf6 Re1+ 57 Kf3 Nd4+ 58 Kf4 Ne2+ by continuing to harass the White King.

RD4 BD7 Ray Jorgenson-Jack Reddy SICILIAN 1 P-K4 P-QB4 2 N-KB3 N-QB3 3 N-QB3 P-Q3 4 P-Q4 PXP 5 NXP N-KB3 6 B-KN5 P-KN3 7 BxN PxB 8 B-N5 B-Q2 9 Q-Q2 P-QR3 10 BxN PxB 11 O-O P-QB4 12 N-KB3 B-K3 13 QR-Q1 B-K2 14 N-Q5 BxN 15 PxB O-O 16 P-QB4 P-QR4 17 KR-K1 R-K1 18 R-K2 B-B1 19 RxR QxR 20 R-K1 Q-R5 21 P-QN3 Q-N5 22 QxQ PxQ 23 R-K2 R-R2 24 P-KN3 P-R4 25 K-N2 P-N4 26 P-KR3 B-K2 27 N-R2 P-B4 28 P-B3 P-B5 29 P-N4 P-R5 30 N-B1 K-B1 31 R-QB2 P-B3 Drawn.

RD4 BD2 Kip Stubberud-Roberto Barajas SICILIAN 1 P-K4 P-QB4 2 N-KB3 P-Q3 3 P-Q4 PXP 4 NxP N-KB3 5 B-Q3 P-KN3 6 O-O N-QB3 7 P-QB3 B-N2 8 P-KR3 B-Q2 9 QN-Q2 P-QR3 10 Nxn Pxn 11 KR-K1 O-O 12 N-KB3 Q-N3 13 Q-B2 QR-N1 14 P-QN4 P-QR4 15 P-R3 KR-K1 16 B-K3 Q-B2 17 QR-N1 P-K3 18 P-QR4 P-Q4 19 P-K5 Drawn. 1/2-1/2

RD4 BD5 Gordon Shuck-Bill Lynch BIRD'S 1 P-K4 P-R3 2 N-KB3 N-KB3 3 P-Q3 P-Q3 4 P-QN3 B-N2 5 B-N2 B-K2 6 B-Q3 N-QB3 7 P-QR3 P-KR3 8 O-O P-Q3 9 P-QB4 Q-Q2 10 P-QN4 P-Q4 11 N-QB3 P-Q5 12 PXP NXP 13 N-K5 Q-Q3 14 N-K2 NxN+ 15 BxN KR-N1 16 KB-B3 BxB 17 QxB R-N1 18 N-B6! R-Q1? See DIAGRAM at right. 19 B-K5 QxP 20 R-B2 Q-Q2 21 NxR BxN 22 R-Q1 Q-B1 23 R/2-Q2 K-K2 24 Q-B6 P-N4 25 B-Q6ch Black Resigns. 1-0



RD4 BD6 Mark Laceky-Ed Peterson SICILIAN 1 P-K4 P-QB4 2 B-B4 P-K3 3 N-QB3 N-QB3 4 N-B3 P-QR3 5 P-QR4 N-R4 6 B-R2 P-B5 7 Q-K2 P-N4 8 PXP PXP 9 NXP B-R3 10 BXP! NxB 11 QxN BxN 12 RxR BxQ 13 RxQch KxR 14 N-K5 N-R3 15 P-Q3 B-R3 16 BxN K-K1 17 B-K3 P-Q3 18 N-KB3 B-K2 19 K-K2 O-O 20 R-QR1 R-R1 21 K-Q2 B-N2 22 RxRch BxR 23 P-QB4 P-KB3 24 P-KN3 K-B2 25 B-N6 P-B4 26 K-K3 PXP 27 PXP P-K4 28 B-B7 P-R3 29 N-Q2 K-K3 30 P-QN4 B-N4ch 31 P-B4 PXPch 32 PXP B-K2 33 N-KB3 K-Q2 34 B-N6 K-B3 35 B-Q4 B-B3 36 P-K5 PXP 37 BXP BxB 38 PxB K-Q2 39 K-B4 P-K4ch 40 NXP Pxnch 41 KxP K-K3 42 K-B4 B-N7 43 P-R4 B-B8 44 P-B5 B-Q6 45 K-K3 B-N4 46 K-Q4 K-B4 47 K-Q5 B-Q6 48 P-B6 K-N5 49 P-B7 B-R3 50 P-K6 Black Resigns. 1-0

RD5 BD6 Don Norrid-Gary Ritchie RUY LOPEZ 1 P-K4 P-K4 2 N-KB3 N-QB3 3 B-N5 P-QR3 4 BxN QPxB 5 N-QB3 KB-B5 6 O-O N-KB3 7 NXP O-O 8 P-Q3 R-K1 9 N-B3 N-Q2 10 P-Q4 B-B1 11 P-K5 P-KB3 12 PXP NXP 13 B-N5 B-K2 14 BxN BxB 15 Q-Q3 R-K2 16 KR-K1 Q-B1 17 RxR BxR 18 R-K1 B-B4 19 N-K4 R-K1 20 N-K5 B-Q3 21 Q-N3ch B-K3 22 QxP R-N1 23 QxRP RxP 24 QxP R-N3 25 Q-R4 Q-B4 26 NxB Pxn 27 Q-K8ch Q-B1 28 QxBch K-R1 29 N-Q7 Black Resigns. 1-0

RD5 BD7 Ed Peterson-Jack Reddy ENGLISH 1 P-QB4 P-K4 2 N-QB3 N-KB3 3 P-K4 N-QB3 4 N-KB3 P-Q3 5 P-Q4 PXP 6 NXP B-Q2 7 B-K2 B-K2 8 O-O O-O 9 B-N5 NXP 10 BxB QxB 11 R-K1 NxN 12 Pxn Q-B3 13 B-N4 BxB 14 QxB N-K4 15 Q-N3 P-QR3 16 R-K4 Q-N3 17 QR-K1 QxQ 18 RPxQ P-KN4 19 P-B4 P-KB4 20 R-K2 PXP 21 PXP N-Q6 22 R-KB1 N-B4 23 R-K7 R-B2 24 R/1-K1 N-Q6 25 R-K8ch RxR 26 RxRch K-N2 27 N-K6ch K-B3 28 N-N5 R-K2 29 R-B8ch K-N2 30 RxP K-N3 31 R-B8 NXP 32 NXP White Resigns. 0-1

RD5 BD8 Tony Mattina-Ray Jorgenson BENONI 1 P-QB4 P-QB4 2 N-KB3 N-QB3 3 P-Q4 P-K3 4 P-Q5 PXP 5 PXP N-N1 6 P-K4 P-Q3 7 N-QB3 P-QR3 8 B-Q3 B-K2 9 N-K2 B-N5 10 N-N3 N-Q2 11 N-B5 BxN 12 PxB N/1-KB3 13 N-N5 P-QN4 14 Q-K2 P-KR3 15 N-K4 NxN 16 BxN N-B3 17 O-O O-O 18 R-K1 NxB 19 QxN B-B3 20 Q-KN4 R-R2 21 R-K2 R-K2 22 B-K3 K-R2 23 QR-K1 R/1-K1 24 Q-KR3 Q-R1 25 P-KN4 QxP 26 P-KN5 BxKNP 27 R-Q2 Q-K4 28 R/1-Q1 P-KB3 29 BxB BPxB 30 RxP Q-KB5 31 K-B1 R-K8ch 32 RxR RxRch 33 KxR QxR 34 Q-K3 Q-KB3 Drawn. $\frac{1}{2}$ - $\frac{1}{2}$

RD5 BD1 Gordon Shuck-Bill Lynch BIRD'S 1 f4 d5 2 Nf3 Nf6 3 e3 c5 4 b3 e6 5 Bb2 Bd6 6 Nc3 a6 7 a4 O-O 8 Ne2 Nc6 9 Ng3 Qe7 10 Bd3 e5? a 11 fxe5 Nxe5 12 Qe2 Bg4 b 13 Nf5 Bxf5 14 Bxf5 Nxf3+? 15 Qxf3 Be5 16 Bxe5 Qxe5 17 O-O b6 18 Qf4 Rae8 19 Bd3 a5 20 Bb5 Re7 21 Rae1 Ne4? c 22 Qxe5 Rxe5 23 d4 cxd4? 24 exd4 Re6 25 c4 Nd2?? d 26 cxd5 Rd6 27 Rf4! Rxd5 28 Rd1 Nxb3 29 Bc4 Nxd4! 30 Rfxd4 Rc5 e 31 Rf1 Rc7 32 R4f4 h6 33 Rb1 Rb8 34 h4 Re7 35 Kf2 f Rc7 36 Ke3 Re8+ 37 Kd3 Rd8+ 38 Rd4 Rb8 39 Bb5 Re7 40 Rd7?? Rxd7+ 41 Bxd7 Drawn. $\frac{1}{2}$ - $\frac{1}{2}$

a Probably not good, giving up a center pawn and weakening the other. b 12...Nxd3 13 Qxd3 Be3 is probably best. c Better is 21...Qxf4. d Better is 25...Nc3. e At this point Black's game is probably resignable. Gordon will win with an advantage like this 9 out of 10 times. But, I decided I needed the practice at defending inferior positions and chose to play at least until the time control at 40 moves. f White might try Rf3-R3b3-Bd5 to capture the b-pawn. g 41...Rd8 wins the Bishop. Is this any way to win a tournament? Yes! Any way you can get it. (All game notes by Bill Lynch.)

ENTRY BLANK - MONTANA STATE PRISON WINTER OPEN

Please find enclosed my check or money order as entry fee for the Montana Prison Open:

Name: _____ ID Number: _____

Address: _____ Rating: _____

City: _____ State: _____ Phone No.: _____

MONTANA STATE PRISON WINTER OPEN

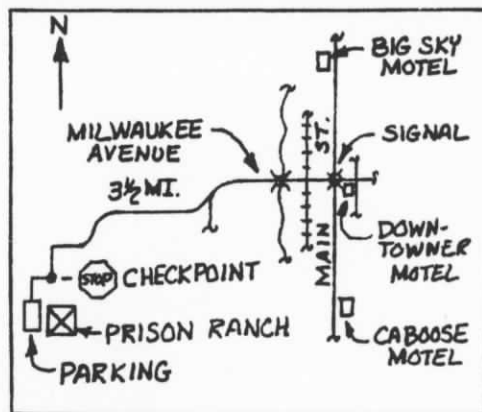
Sponsor - MSP Chess Club, Montana Chess Association

Date: January 26-27, 1980

Place: World of Work Room, Education Building, Montana State Prison Ranch, Box 7, Deer Lodge, Montana 59722. (West of Deer Lodge - See Map at right.)

Registration: See entry blank page 5.

ADVANCE REGISTRATION REQUIRED. NO LATE REGISTRATION. NO REGISTRATION AT SITE. Entries must be postmarked no later than Jan. 11, 1980. Mail to Bill Lynch, 1144 Harvard Ave., Billings, MT 59102. (Relatives, close friends or persons on an inmate's regular visitors list may not enter.)



Entry: Adults \$3.00, Juniors (under 19) \$2.00.

Rounds: 4 Round Swiss System, 9:00am, 2:00pm / 9:00am, 2:00pm.

Memberships: Montana Chess Association and US Chess Federation membership required, may join at site. MCA - \$3 Adult, \$2 Junior. USCF - \$20 Adult, \$10 Junior, \$2.50 Participating Junior. COMBINED - \$20 Adult, \$10 Junior, \$4 Participating Junior.

Time Control: 25 moves / 1 hour per player, then 25 moves / hour thereafter.

Prizes: Medals per entries. (Probably 1st, 2nd; 1st & 2nd D-E-UNR; 1st, 2nd & 3rd Inmate.)

Directors: Charles A. Jacobs, Jr. & Bill Lynch.

Notes: Visitors should arrive by 8:30am on Saturday and Sunday for check-in through the Security gate. They will leave and return as a group for meals at 11:00am-12:30pm and 4:00pm-5:30pm. They will leave as a group on Saturday after Round 2 but may leave individually at the completion of their Round 4 games on Sunday. Intermediate departures and reentries will not be allowed either day. While not playing, inmates and visitors may lounge or discuss chess in the adjacent small conference room. Sets and boards will be provided by the MSP Chess Club. Visitors should bring chess clocks and may also have books and personal effects (pens, pencils, keys, wallets - but not, of course, pocket knives.) No food may be brought in through the gate.

4TH COPPER KINGS OPEN

Sponsor - Montana Chess Association

March 1-2, 1980

Place: Butte Community Center, 250 W. Front Street, Butte, MT 59701.

Registration: 9:00-10:00am Saturday March 1st. Entry Fee = \$8.00. Montana Chess Association and US Chess Federation membership required, may join at site. MCA - \$3 Adult, \$2 Junior (under 19). USCF - \$20 Adult, \$10 Junior, \$2.50 Participating Junior. COMBINED - \$20 Adult, \$10 Junior, \$4 Participating Junior.

Rounds: 5 Round Robin / 5 Round Swiss System. Two 6 man sections determined by USCF ratings plus an open section. (All participants play five games, except byes may be required by an odd number of players.) 10:00am, 2:30pm, 7:00pm / 10:00am, 2:30pm.

Time Control: 40 moves / 2 hours per player. Then 25 moves / hour thereafter.

Prizes: 1st Trophy + \$15 & 2nd - \$15 each section. (Trophies are hand carved stallion heads cut from semi-precious Onyx.)

Director: Andy Shuck, Rt. #1, Box #104, Whitehall, MT 59759.

Notes: Gordon Shuck has offered to lodge up to seven visiting players at his home in Whitehall. Those interested should phone or write in advance.

*****6*****

PRESORTED
FIRST CLASS

MONTANA CHESS ASSOCIATION
MEMBER

Montana Chess Association
Billings MT 59102
Editor
William M. Lynch
1144 Harvard Ave.
Billings MT 59102