

MONTANA CHESS NEWS

SEPTEMBER 1979

VOLUME IV ISSUE 5

SMITH WINS WYOMING CLOSED

LYNCH TOPS KING'S GAMBIT OPEN

LYNCH, STEVENS, DAN SMITH AND CHUE WIN IN BILLINGS RIMROCK OPEN

USCF RAISES DUES

CHICAGO - The Delegates attending the annual business meeting of the United States Chess Federation on August 4-5, 1979 have voted to increase membership dues as of January 1, 1980. Regular and Junior membership fees will go up 20 to 37½ percent, with the largest increases in multi-year memberships. Special memberships (Participating Junior, Blind, Senior and Spouse) will remain the same. In addition, a new membership class, Tournament Member, has been created which will allow anyone to play in tournaments and receive a rating by paying a fee of \$1.00 per game played. These members will not receive a subscription to Chess Life & Review.

The dues increase was unanimously recommended by the USCF Policy Board, which consists of the President, Vice President, Treasurer, Secretary, Immediate Past President and three Members-at-Large, all of whom are elected by the State Delegates, who are elected or appointed in the states. Treasurer George Cunningham's Report ran over three hours as he strove to give the Delegates a full picture of the USCF's assets and liabilities. The Federation has problems stemming from: (1) the failure to establish a reserve account to pay the continuing costs of services to Life Members (the fees collected were spent during the years they were collected); (2) the establishment of many new programs during the membership boom created by interest in Bobby Fischer which were not discontinued when reversal of the membership trend made them impractical (most have since been slashed); (3) penalties imposed by the Internal Revenue Service when an audit revealed that some operations conducted during the Fischer boom did not comply with the regulations governing non-profit corporations; and (4) costs incurred when the computer service employed by the Federation went out of business necessitating the acquisition of a new service (the Delegates at the 1978 meeting approved the purchase of an in house system which, while initially more expensive, should pay for itself in a number of years and prevent a recurrence of this problem). Consideration of these problems, and the effects of inflation and impending recession, led the Treasurer to predict a budget deficit of \$76,000 for the fiscal year ending June 30, 1980, in spite of additional program cuts enacted last year. The Policy Board proposed the dues increase as a necessary evil to balance the budget.

Debate following the Treasurer's Report and the Policy Board recommendations ran for three and one half hours in special session on Saturday night. The Participating Junior membership, which the Policy Board proposed to eliminate, was reinstated, but all other attempts to amend the proposal were defeated. When the vote on the proposal was finally taken, the increase was approved by a margin of 40-30.

TYPE OF MEMBERSHIP	PRESENT RATE	NEW RATE
Regular 1 YR	\$15.00	\$20.00
2 YR	\$28.50	\$38.00
3 YR	\$40.00	\$55.00
Junior 1 YR	\$8.00	\$10.00
2 YR	\$15.00	\$19.00
3 YR	\$21.50	\$27.50
Participating Junior 1 YR	\$2.50	\$2.50
Blind	\$3.50	\$3.50
Senior 1 YR	\$10.00	\$10.00
Spouse 1 YR	\$10.00	\$10.00
Tournament	---	\$1/Game

SECTION	Place	Name	Rating	1	2	3	4	5	6	Score	Prizes
I	1	Bill Lynch	1658	x	1	0	1	1	$\frac{1}{2}$	$3\frac{1}{2}-1\frac{1}{2}$	\$30
	2-3	Matthew Guthrie	1578	0	x	1	$\frac{1}{2}$	1	$\frac{1}{2}$	3-2	
	2-3	Ken Shinn	1683	1	0	x	$\frac{1}{2}$	$\frac{1}{2}$	1	3-2	
	4	Kip Stubberud	1744	0	$\frac{1}{2}$	$\frac{1}{2}$	x	$\frac{1}{2}$	1	$2\frac{1}{2}-2\frac{1}{2}$	
	5	Bruce Johnson WY	1673	0	0	$\frac{1}{2}$	$\frac{1}{2}$	x	1	$2\frac{1}{2}-2\frac{1}{2}$	
	6	Steve Haataja SD	1618	$\frac{1}{2}$	$\frac{1}{2}$	0	0	0	x	1-4	

SECTION	Place	Name	Rating	1	2	3	4	5	6	Score	Prizes
II	1-2	Richard Stevens	1449	x	1	0	1	1	1	4-1	\$15
	1-2	Dan Smith WY	1425	0	x	1	1	1	1	4-1	\$15
	3-5	Gordon Shuck	1569	1	0	x	0	1	0	2-3	
	3-5	Andy Shuck	1471	0	0	1	x	0	1	2-3	
	3-5	Tom Romine	1353	F	0	0	1	x	1	2-3	
	6	Ted Anderson	1460	0	0	1	0	0	x	1-4	

SECTION	Place	Name	Rating	RD1	RD2	RD3	RD4	RD5	Score	Prizes
III	1	George Chue WY	NON	W4	W2	W5	L3	W6	4-1	\$30
	2-3	Chuck Chapman	1127	W6	L1	D3	W7	W8	$3\frac{1}{2}-1\frac{1}{2}$	\$7.50
	2-3	Gary Ritchie	1284	F	W7	D2	W1	W4	$3\frac{1}{2}-1\frac{1}{2}$	\$7.50
	4-5	Don Norrid	1119	L1	W8	W6	W5	L3	3-2	
	4-5	Clark Kochivar	874	W8	W6	L1	L4	W7	3-2	
	6-7	Perry Moler	1335	L2	L5	L4	W8	L1	1-4	
	6-7	Jim Tindall	1095	F	L3	W8	L2	L5	1-4	
	8	Ty Griffin	NON	L5	L4	L7	L6	L2	0-5	

USCF - Yasser Seirawan is the new World Junior Champion. The young Seattle master scored 10-3 against top juniors from around the world to take clear first ahead of Alexander Chernin of the USSR. Seirawan adds the World Junior Championship to his outstanding performances this year at Lone Pine and the US Junior Championship. He won the latter tournament for the second year in a row to qualify for the world meet in Skein, Norway.

CHESS OPENINGS IN MONTANA Bill Lynch

An article in the Colorado Chess Association Bulletin about the openings used by the Colorado players, and their results, aroused my curiosity about the preferences in our own state. I reviewed the scoresheets that I'd retained from the '78 Rimrock, '78 MAFB, '79 Copper Kings, '79 Missoula and '79 Montana Open Tournaments and compiled the following statistics (wins-losses-draws) from a total sample of 295 games:

KING PAWN: Ruy Lopez 11-5-1; Other 1...P-K4 39-29-5; Sicilian 24-24-8; Other 25-13-14; Subtotal all 1 P-K4 99-71-18.

QUEEN PAWN: Queen's Gambit Declined 7-3-0; Queen's Gambit Accepted 3-3-2; Nimzo-Indian 3-1-1; Other 8-24-5; Subtotal all 1 P-Q4 21-31-8.

OTHER: English 10-7-4; Reti 6-4-2; Bird's 3-1-1; Other 2-5-2; Subtotal 21-17-9.

GRAND TOTAL: 141-119-35.

The King Pawn openings are the most popular by far, and White's results are quite good except against the Sicilian in which Black is winning as often as not. Those playing the Black side of the Ruy Lopez clearly need to do some studying or, think about switching to 1...P-QB4. An interesting sidelight to the King Pawn statistics is that in virtually all games where the openings left the "book" early in the game, regardless of which player deviated, White was the winner.

In the Queen Pawn games, White has done fairly well in standard variations, but in direct contrast to the King Pawn games, when the game leaves the "book" White is getting killed. Perhaps White really has more intrinsic pressure after 1 P-K4.

But, devotees of the English, Reti and Bird's openings have met with good success, though other more exotc tries have not faired well. Overall, White shows a slight margin, as expected, with the exception of the Queen Pawn games noted above.

IMPROVE WITH THE MASTER!

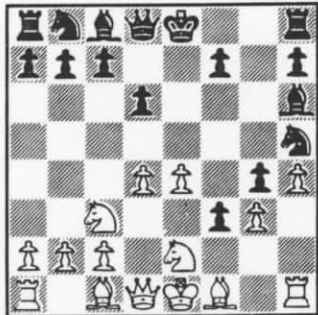
Very instructive analysis of games played by lower rated players in tournaments, friendly encounters or by mail, only \$10 each. Mail lessons, \$5 each. Questions on particular positions \$3 each. For details just send a stamp to:

RUDY BLUMENFELD, BOX 271, MIDWOOD STATION, BROOKLYN, NY 11230.
(See below for an example of Mr. Blumenfeld's analysis. - ED)

Vlastimil Hort (2610) - Yasser Seirawan (2495) Lone Pine, 1979 FRENCH DEFENSE

- 1 e4 e6 a In this variation, White's KBP gets blocked.
 2 d4 d5 b The main continuation, but Black can also play 5...Ne4.
 3 Nd2 Nc6 a c Very energetic is 6 Bd3 which is played by GM Geller among others.
 4 Ngf3 Nf6 If Black replies 6...f6, then he'd better be ready for 7 Ng5, threat-
 5 e5 Nd7 b ening 8 Qh5+ with a strong attack. White was very succesful with the
 6 Be2 c Ncb8 d text move in Makarichen-Hübner, Amsterdam 1975: 6 Be2 f6 7 exf6 Qxf6
 7 h4! e b6 8 Nf1! e5? (Looks good but isn't! Better is 8...Bd6 although White
 8 h5 c5 f keeps better chances with 9 Ne3) 9 Ne3! e4 10 Nxd5 Qd6 11 c4 exf3 12
 9 c3 cxd4 Bf4 with strong threats.
 10 cxd4 Ba6 d Black decides to attack the base of White's center with c5 while also
 11 h6 g6 g preparing the maneauver b6 and Ba6, exchanging the bad Bishop. Black
 12 Nf1! h Be7 might be able to achieve a good game if White doesn't try to use
 13 Bd2 i Bxe2 j properly his space advantage on the Kingside.
 14 Qxe2 Nc6 e Gaining more space for the White pieces and aiming to create weak-
 15 Rc1 Rc8 nesses in Black's pawn structure on the Kingside.
 16 N1h2 Qc7 f After 8...h6, White can play 9 Rh3 and 10 Rg3 with the idea of keep-
 17 O-O O-O ing Black's Kingside undeveloped.
 18 Ng4 Qb7 k g Now the squares g5, f6 and g7 are very weak.
 19 Rc3! Ncb8 h Consistent! The knight is heading for the weak square.
 20 Bg5! l Bxg5 m i White has also to take care of the c-file, since it is about the only
 21 Nxg5 Rxc3 chance of counterplay for Black.
 22 bxc3 n Qc8 j If 13...f6, then 14 exf6 Bxf6 (Not 14...Nxf6 15 Bxa6 Nxa6 16 Qa4+)
 23 Rc1 Nc6?! o 15 Bxa6 Nxa6 16 Qe2 Nc7 17 Bf4 Kf7 18 Ne3 Re8 19 Ng4 and White is
 24 Qb5! p Kh8 better by firmly controlling the weak e5 square.
 25 Qa4! q Na5 k Now Black's Rooks are connected for attempts at counterplay on the
 26 Qa3 Qd8 r Queenside.
 27 f4 Kg8 s l Now White's QP doesn't require protection, and this "thematic" move,
 28 Qd6! t Kh8 which weakens the Black squares, is possible.
 29 Nf6! u Nxf6 m After 20...Bb4 21 Rb3 the Bishop doesn't have a good retreat, and
 30 Nxf7+! v Rxf7 21...Rc4 would lose the exchange to 22 Ne3.
 31 Qxd8+ Ng8 n The resulting weakness at c3 strengthens the QP and isn't hard to
 32 Qe8 w Re7 defend since Black's pieces lack freedom of movement.
 33 Qf8 Nc4 o 23...Qc4 24 Qf3! Qxa2 loses to 25 Nf6+ Kh8 26 Nfxh7; and 23...f5 24
 34 Kf2 x Nd2 exf6 Nxf6 would be bad since White can choose either 25 Qe5 or 25
 35 Ke3 Nc4+ y Nxf6+ Rxf6 26 Qe5! Nd7 27 Qd6 or 25 Nxe6. But, the hasty text move,
 36 Ke2 b5 z allows White to penetrate with the Queen on the Queenside. Preferable
 37 Rb1 a6 was the cautious 23...a6.
 38 a4! Rd7 aa p Avoiding 24...Nxd4 since 25 Qxd7! wins a piece.
 39 axb5 axb5 q That's the point! While defending the QP, White gets ready to take
 40 Rxb5 Ra7 over the Black diagonal a3-f8.
 41 Rb8 Ra2+ r Avoiding 27 Qe7 Kg8 28 Qxd7!
 42 Ke1 bb Resigns s Black is almost in zugzwang; the Knight on d7 couldn't move because
of 28 Nf6 and 29 Nxf7, and on 27 Nc4 would come 28 Qxa7.
t Decisive! There isn't a reasonable defense to the threat 29 Qxd7!
u A cute case of pinning.
v The forking power of White's Knights is terrific.
w The game is won of course, but it is efficient to tie up Black's Rook.
x Keeping the Knight out of the Kingside.
y Or 35...Ne4 36 c4!
z Offers a new target, but White was threatening anyway with the powerful 37 g4 and 38 f5.
aa Or 38...Rb7 39 axb5 axb5 40 Ra1.
bb White refuses to checkmate himself with 42 Kd3 Rd2 Mate. Now he is threatening three
different mates.

Place	Name	Rating	RD1	RD2	RD3	RD4	Score	Tie-Breaks
1	Bill Lynch	1658	W4	W3	W6	D2	3½-½	
2	Jim Loy	1588	D5	W10	W7	D1	3-1	
3	Gordon Shuck	1569	W11	L1	D4	W6	2½-1½	8½
4	Howard Hoene	1459	L1	Bye	D3	W8	2½-1½	7/3½
5	Andy Shuck	1444	D2	L9	W8	W7	2½-1½	7/3
6	Keith Bayern	(1500)	W9	W7	L1	L3	2-2	
7	Chris Tiahrt	1572	W8	L6	L2	L5	1-3	8½
8	Leslie Gunderson	(1361)	L7	W11	L5	L4	1-3	6½
9	Ken Shinn	1683	L6	W5	Withdrew		1-1	4½
10	Gary Ritchie	1284	Bye	L2	Withdrew		1-1	3
11	Eric Munshower	UNR	L3	L8	Withdrew		0-2	



RD1 BD2 Howard Hoene-Bill Lynch KING'S GAMBIT 1 P-K4 P-K4 2 P-KB4 PXP 3 N-KB3 P-Q3 4 P-Q4 a P-KN4 b 5 P-KR4 P-N5 6 N-N1 c B-R3 d 7 N-QB3 N-KB3 e 8 KN-K2 N-R4 9 P-KN3! f P-B6?! g 10 BxB h Pxn 11 NXP i N-QB3 12 R-KN1 j Q-K2 13 B-N2 B-Q2 14 Q-Q2 O-O-O 15 P-QN4! QR-K1 16 P-QR4 P-B4 17 P-N5 N-Q1 18 Q-R5 K-N1 19 K-Q2 PXP? k 20 KR-QN1? l P-N3 21 Q-B3 P-Q4 22 P-R5 N-K3 23 PXP BPXP 24 R-N4 R-QB1 25 Q-N3 m R-B2 26 N-B3 n N-KB3 27 B-N5 NxB 28 Pxn N-R4 29 NxQP QXPch 30 K-Q1 B-K3 31 BXP? o N-B3 32 Q-K3 QxQ 33 NxQ NxB 34 P-B4 NXP 35 P-Q5 R-Q1 36 K-K1 B-B4 37 R-Q1 P-KR4 38 P-Q6 R/2-Q2 39 R-R4 RXP 40 R/1-QR1 R/1-Q2 41 N-Q5 R-K6ch 42 K-B2 P-R5 43 N-N4 R-K2ch 44 K-N1 B-K5 45 N-B6ch K-B1 White Resigns p 0-1

After 9...P-B6

a Here Howard reverts to the "main line" against the Fischer defense 3...P-Q3. b Black may also play 4...N-KB3 5 N-QB3 N-R4 with a satisfactory game after 6 B-K2 B-N5 7 O-O P-KN3 8 N-K1 BxB 9 NxB B-N2 10 N-Q3 N-QB3 11 P-B3 O-O 12 N/2XP according to Hay in King's Gambit, Chess Digest, 1973. c 6 N-N5 is suspect following 6...P-KR3 7 BXP Pxn 8 BxNP B-K2 9 Q-Q2 N-KB3! (Hay). d Here, I've come up with a move originated by Jim Tarjan which Hay considers not quite adequate. He gives 6...P-B6! as best, though the resulting lines are unclear. e Hay considers also 7...N-QB3 8 KN-K2 P-B6 9 N-B4 N-KB3 10 B-K3 with a superior game for White, and 7...P-QB3 8 KN-K2 Q-B3 9 P-KN3! with good play for White. f The exclamation point is Hay's. g An innovation? Hay gives only 9...N-QB3 10 PXP P-N6 11 B-K3 B-N5 12 Q-Q2 and 9...PXP 10 BxB Q-B3 11 Q-Q2 Q-B7ch 12 K-Q1 P-N7 13 BXP QxB 14 R-KN1 Q-B6 15 Q-N5 with advantage to White in both cases. h Surely not 10 N-B4 NXP! i I feel this second Knight retreat gives Black equality, but I couldn't find anything better. j 12 B-N2 and 13 R-KB1 seems more active. k The proper sequence is 19...P-N3 and 20...PXP. l Howard disdains 20 P-N6 BPXP 21 QxN, believing his attack will lead to mate. m Black can defend against Q-R3 with R-B2 or B-K1 and he also has ...P-QR4, PXPp. K-R2 in reserve to fend off mate. n Not 26 QXP QXR. o Necessary is 31 P-B4 to save the Knight, with interesting play after ...BxN 32 PxB N-B3 33 P-Q6 R-Q2. p White must trade Rooks to avoid 29 R-N7mate. (This game was awarded the best game prize.) Notes by Lynch.

RD1 BD1 Ken Shinn-Keith Bayern KING'S GAMBIT 1 P-K4 P-K4 2 P-KB4 PXP 3 B-B4 N-QB3 4 N-KB3 P-KN3 5 P-Q4 B-N2 6 QBXP P-Q3 7 O-O B-N5 8 P-B3 N-R3 9 BxN BxB 10 QN-Q2 O-O 11 Q-B2 Q-K2 12 QR-K1 B-N2 13 P-QN4 QR-Q1 14 P-N5 N-R4 15 B-Q3 P-N3 16 P-Q5 QR-K1 17 N-Q4 Q-Q2 18 N/2-B3 B-K4 19 P-QR4 Q-Q1 20 Q-Q2 Q-B3 21 NxB QxN 22 Q-B4 Q-R4 23 P-R3 B-Q2 24 R-K3 Q-K4 25 Q-B6 N-N2 26 QxQ RxQ 27 R/B1-K1 N-B4 28 B-B2 R/B1-K1 29 K-B2 K-N2 30 N-B3 R/4-K2 31 P-N4 P-QR3 32 P-B4 PXP 33 RPXP R-QR1 34 P-K5 PXP 35 NXP B-B1 36 R/1-K2 B-N2 37 P-N5 N-Q2 38 N-B6 RxR 39 RxR N-B4 40 B-Q1 B-B1 41 B-N4 BxB 42 PxB R-R5 43 R-K7 RXP 44 RxP RxP 45 P-Q6 RxP 46 P-Q7 NXP 47 RxN RxP 48 R-N7 P-R4 49 K-N3 P-N4 50 N-Q8 K-N3 51 NXP P-R5+ 52 K-R2 K-R4 53 N-Q6 R-N7+ 54 K-R1 K-N5 55 N-B4 R-N5 56 NXP K-N7 57 R-N7 R-N8 Mate. 0-1

RD2 BD2 Gary Ritchie-Jim Loy KING'S GAMBIT 1 P-K4 P-K4 2 P-KB4 PXP 3 N-KB3 P-KN4 4 P-Q4 P-N5 5 N-K5 Q-R4ch 6 K-K2 P-Q3 7 N-B4 P-N6 8 Q-Q3 QxRP 9 RxQ PXR 10 BXP P-R8=Q 11 K-B2 P-KR4 12 N-B3 P-R5 13 R-K1 P-R6 14 PXP BXP 15 BxB QxB 16 QxQ RxQ 17 N-Q5 K-Q2 18 N-B6ch NxB 19 N-N6ch RPxN White Resigns. 0-1

RD2 BD3 Chris Tiahrt-Keith Bayern KING'S GAMBIT 1 P-K4 P-K4 2 P-KB4 PXP 3 N-KB3 P-KN3
 4 B-B4 N-QB3 5 P-Q3 P-Q3 6 N-B3 B-N5 7 BXP B-N2 8 Q-K2 KN-K2 9 O-O-O O-O 10 P-KR3 N-Q5
 11 Q-B2 NxB 12 PxB N-Q5 13 Q-R4 P-KR3 14 BXP N/2-B3 15 BxB QxQ 16 RxQ KxB 17 R-B1 N-K4
 18 B-Q5 P-QB3 19 B-N3 R-R1 20 RxR RxR 21 P-N5 R-R4 22 R-B6 RXP 23 RxQP NxB 24 RPN RXP
 25 N-Q1 R-K7 26 P-Q4 N-B6 27 P-Q5 RXP 28 PXP PXP 29 RXP R-K8 30 P-QB4 P-N4 31 R-Q6 P-N5
 32 R-Q3 R-B7 33 K-B2 White Resigns. 0-1

RD4 BD1 Bill Lynch-Jim Loy KING'S GAMBIT 1 e4 e5 2 f4 exf4 3 Nc3 Qh4+ 4 Ke2 d6 5 d4?
 6! 6 Nf3 Qe7 7 e5 dxe5 8 dxe5 g5 9 Kd2?! g4 10 Nd4 Qxe5 11 Bb5+ Kf7 12 Kd3 Bc5 13 Bc4+
 Kg6 14 Nce2 Bxd4 15 Nxd4 Qe4+ 16 Kc3 Nf6 17 Bd3 Qe5 18 Kb3 Rd8 19 c3 c5! 20 Re1 Ne4! 21
 Nxf5 Bxf5 22 Rxe4 Bxe4? (Rxd3!) 23 Bxe4+ Qxe4 24 Qxd8 Nc6 25 Qxa8 Na5+ 26 Ka3 Nc4+ 27
 Kb3 Na5+ 28 Ka3 Nc4+ 29 Kb3 Drawn. ½-½

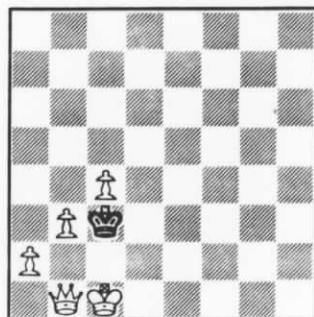
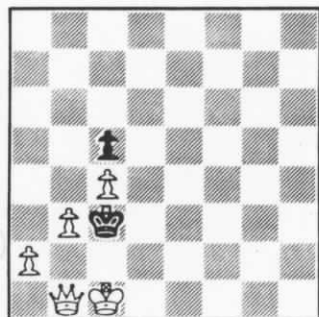
RD4 BD2 Keith Bayern-Gordon Shuck KING'S GAMBIT 1 P-K4 P-K4 2 P-KB4 P-Q4 3 KPXP P-K5
 4 N-QB3 N-KB3 5 P-Q3 B-KB4 6 PXP NXP 7 NxB BxN 8 B-K3 BxQP 9 Q-K2 Q-K2 10 Q-Q3 B-K5 11
 Q-Q2 N-B3 12 O-O-O R-Q1 13 Q-B3 RxRch 14 KxR Q-Q2ch 15 K-K2 P-B4 16 P-QR3 B-Q3 17 K-B2
 B-K2 18 N-B3 B-B3 19 N-K5 NxB 20 PxB B-R5ch 21 K-N1 P-QR3 22 B-Q3 R-B1 23 B-B5 R-N1 24
 P-KR3 B-N6 25 P-K6 Q-B3 26 BxB PxB 27 B-Q4 Q-Q4 28 QxB QxBch 29 Q-B2 QxQch 30 KxQ R-B1ch
 31 K-K3 K-K2 32 KxP R-B7 33 R-Q1 KxP 34 R-K1 K-B1 35 35 K-Q3 RxNP 36 P-QN4 P-QN4 37 R-K3
 P-KN4 38 P-B4 P-B3 39 K-Q4 R-QB8 40 PXP PXP 41 R-QB3 RxR 42 KxR P-KR4 43 K-Q3 P-N5 44
 PXP BPXP 45 K-K3 P-N6 46 K-B3 K-Q4 47 KxP K-K3 48 K-B3 K-Q4 49 K-K3 K-B5 50 K-K4 K-N6 51
 K-Q5 KxP 52 K-B5 K-R5 53 K-N6 KxP 54 KxP K-R5 White Resigns. 0-1



After 17 R-Q6

MT OPEN RD1 BD4 Howard Hoene-Bill Lynch KING'S GAMBIT 1 P-K4 P-K4
 2 P-KB4 a PXP 3 N-KB3 P-Q3 4 B-QB4 P-KR3 5 P-KR4 N-KB3 6 N-QB3 B-K2
 7 P-K5 b N-N5 c 8 P-Q4 PXP 9 Q-K2!? d PxQP 10 N-QN5 O-O e 11 QBxP?!
 f B-N5ch 12 P-B3 PXP 13 PXP B-R4 14 R-Q1 Q-B3 15 BxQBP BxPch! 16 K-
 B1 N-QB3 17 R-Q6 g Q-B4! h 18 K-N1 B-N5 19 RxN Q-B8ch 20 N-K1 PXR 21
 K-B1 PxB 22 B-Q5 N-K6ch i 23 K-B2 NxB 24 B-N3 B-B4ch 25 K-B1 N-K6ch
 26 K-N1 N-N5ch 27 K-B1 B-K3 28 Q-K4 B-B5ch White Resigns. 0-1

a Our first rated tournament game ever! And, the colors are right to "discuss" our pet variation of the King's Gambit. b Here lies Howard's departure from the books. In King's Gambit, Chess Digest, 1973, Trevor Hay gives 7 P-Q4 N-R4! 8 N-Q5 B-N5 9 O-O P-KN4 with the plus to Black due to his solid pawn formation, so innovation in search of improvement is justified. c 7...N-R4 should also be possible with play similar to b above, but I've always liked the text, putting immediate pressure on e5 and locating the Knight on an captive square from which it cannot be driven. d The only move which keeps the pressure on. Howard has explored many other lines, but experience had shown that Black equalizes quickly against all but the text. e A surprise to Howard. I'd forgotten our previous analysis which continued 10...P-QB3 11 NXP/Q4 Q-B2 12 O-O O-O 13 Q-K4 (unclear). We'd felt that Black must prevent 11 QBxP and the threats on QB7. (Note that 10...N-K6, though attractive, loses its charm after 11 BxN BPxN 12 BxPch KxB 13 Q-B4ch K-B1 14 N-K5.) f In light of what follows, we thought 11 O-O might have been better, but after 11...P-QB3 12 NXP BxP Black looks better. g Howard felt that 17 P-KN3, preventing Q-B4 was better, but Black has 17...B-N5 to secure his position. h Threatening 18...Q-B8ch or 18...N-K6ch followed by 19...QxB. i Note the latent power of this Knight through the game, laying in wait on N5 from which it cannot be driven, and finally dealing the decisive blow.



Aside from tournament games and the more casual encounters with friends, problem solving is one of the more enjoyable ways to enjoy the game, and learn a little as well. Others enjoy creating interesting problems, and Montanan's Jim Loy (left) and Kip Stubberud (right) have come up with these matching three movers (White to move and Mate in three moves.) The solutions are on page 7.

Place	Name	Rating	RD1	RD2	RD3	RD4	RD5	RD6	Score	Tie-Breaks (M/S)
1	Steve Smith	1960	W10	W11	W2	D5	D6	D3	4½-1½	15½/23
2	Richard Buchanan CO	1888	W15	W3	L1	W10	W5	D6	4½-1½	15½/22½
3	Rod Weikum	1588	W21	L2	W15	W9	W8	D1	4½-1½	14
4	Doug Greenwalt CO	1817	W14	D5	D8	W13	D7	W11	4½-1½	13½
5	Marc Lynn	1964	W12	D4	W7	D1	L2	W10	4-2	16
6	Tom McClew	1892	W19	L7	W9	W11	D1	D2	4-2	15
7	Steve Haataja SD	1618	W22	W6	L5	D8	D4	W12	4-2	14½
8	Wayne Pressnall NE	1898	W18	D9	D4	D7	L3	W16	3½-2½	14½
9	Bruce Johnson	1673	W17	D8	L6	L3	W15	W18	3½-2½	12½
10	David Hays	1403	L1	W13	W17	L2	W19	L5	3-3	14
11	Bob Burley	1753	W20	L1	W19	L6	W13	L4	3-3	13½
12	Jack Jones	1435	L5	W14	L13	W16	W18	L7	3-3	12½
13	Matt Ondler	UNR	W16	L10	W12	L4	L11	W19	3-3	11½
14	Duane Hoelscher	926	L4	L12	Bye	L18	W21	W20	3-3	8
15	Steve Schmadcke	960	L2	W21	L3	D17	L9	W22	2½-3½	11½
16	Ed Holden	1450	L13	W20	½Bye	L12	W17	L8	2½-3½	10½
17	James Lanyk	NON	L9	W18	L10	D15	L16	W21	2½-3½	10
18	Malvin Skarsten SD	1315	L8	L17	W22	W14	L12	L9	2-4	12
19	Will Pressnall NE	1278	L6	W22	L11	W20	L10	L13	2-4	11
20	Dan Hays	UNR	L11	L16	W21	L19	W22	L14	2-4	8½
21	Richard Graff	NON	L3	L15	L20	W22	L14	L17	1-5	
22	Dale MacGavin	NON	L7	L19	L18	L21	L20	L15	0-6	

David Hays was named Wyoming Junior Champion on tie-breaks over Matt Ondler. The players agreed to a five man round robin playoff to determine the Wyoming Senior Champion - see the report elsewhere in this issue.

RD3 BD4 Tom McClew-Bruce Johnson SICILIAN 1 e4 c5 2 Nf3 d6 3 Bb5+ Nc6 4 d4 cxd4 5 Nxd4 Bd7 6 c4 Nf6 7 Nc3 g6 8 f3 Bg7 9 Bxc6 bxc6 10 Be3 0-0 11 Qd2 a5 12 Kf2 a4 13 Rag1 e5 14 ide2 Be6 15 g4 Bxc4 16 Ng3 d5 17 Bh6 Bxh6 18 Qxh6 Qb6+ 19 Kg2 Qxb2+ 20 Kh3 Qxc3+? 21 Nf5 Ne8 22 Ne7+ Black Resigns. 1-0

RD3 BD2 Steve Haataja-Marc Lynn LARSEN'S 1 b3 f5 2 Bb2 Nf6 3 f4 d6 4 Nf3 e6 5 e3 Be7 6 Be2 0-0 7 0-0 a5 8 Nc3 Bd7 9 d3 b5 10 a3 c5 11 Qd2 Qb6 12 Kh1 Na6 13 Ng1 Rac8 14 Rab1 d5 15 Na2 Rfd8 16 Rfc1 c4 17 bxc4 dxc4 18 dxc4 Ne4 19 Qe1 Qxe3 20 Nh3 Nd2 21 Ra1 bxc4 22 Rd1 Bc6 23 Bc1 Qxh3 White Resigns. 0-1

RD3 BD1 Steve Smith-Rich Buchanan KING PAWN 1 e4 e5 2 c3? (Smith explains: "I was going to play Ponziani's Opening, but forgot to play Nf3 first!") d5 3 Qc2 Nf6 4 d3 Nc6 5 Nf3 Bc5 6 b4 Bd6 7 Bg5 Be6 8 Nbd2 h6 9 Bh4 g5 10 Bg3 a6 11 a3 h5 12 h3 h4 13 Bh2 Nh5 14 c4 dxc4 15 dxc4 Nf4 16 Bxf4 gxf4 17 c5 Be7 18 0-0-0 Bf6 19 Bc4 Qc7 20 Bxe6 Qxe6 21 Qc4 Ke7 22 Qxe6+ Kxe6 23 Nh2 Nd4 24 Ndf3 Nxf3 25 gxf3 a5 26 Kb2 axb4 27 axb4 Ra4 28 Kc3 Be7 29 Ra1 Rha8 30 Rxa4 Rxa4 31 Kb3 Ra8 32 Rd1 Rb8 33 Ng4 c6 34 Kc4 b6 35 cxb6 Rxb6 36 Rb1 Rb5 37 Nh6 Rb8 38 b5 cxb5+ 39 Rxb5 Rc8+ 40 Kd3 Rc6 41 Nf5 Bg5 42 Kd2 Ra6 43 Ke2 Bd8 44 Kf1 Rc6 45 Rb8 Kd7 46 Rb7+ Ke6 47 Rb5 Ra6 48 Rc5 Rb6 49 Rd5 Bf6 50 Ke2 Bg5 51 Kd3 f6 52 Ke2 Rb1 53 Rd6+ Kf7 54 Rd7+ Ke8 55 Rd1 Rxd1 56 Kxd1 Kf7 57 Kd2 Kg6 58 Kd3 Kh5 59 Kc4 Bh6 60 Kd5 Bf8 61 Ke6 Kg5 62 Kf7 Bc5 63 Ng7 Bxf2 64 Ne6+ Kh6 65 Kxf6 Bd4 66 Nd8 Kh7 67 Nc6 Kg8 68 Nxe5 Kf8 69 Kf5 Bf2 70 Kxf4 Ke7 71 Kg4 Kf6 72 f4 Black Resigns. 1-0

RD5 BD3 Rod Weikum-Wayne Pressnall QUEEN PAWN 1 d4 Nf6 2 c4 Nc6 3 d5 Ne5 4 e4 d6 5 Nc3 e6 6 f4 Ned7 7 Nf3 Be7 8 dxe6 fxe6 9 e5 dxe5 10 fxe5 Ng4 11 Bf4 0-0 12 Bg3 Ne3 13 Qd3 Bc5 14 b4 Nxf1 15 bxc5 Nxc3 16 hxg3 h6 17 Rxh6! Nxc5 18 Q-h7+ Kf7 19 Qg6+ Ke7 20 Qxg7+ Ke8 21 Qg6+ Black Resigns. 1-0

RD6 BD4 Marc Lynn-David Hays CARO KANN 1 P-K4 P-QB3 2 P-Q4 P-Q4 3 N-QB3 PXP 4 NXP B-B4 5 N-N3 B-N3 6 B-QB4 P-K3 7 N-K2 P-KR3 8 0-0 N-KB3 9 N-B4 B-R2 10 Q-K2 N-Q4 11 R-K1 N-Q2 2 Nxn BpxN 13 Bxp Q-N3 14 B-KB4 QxQP 15 BxKP PxB 16 Qxfch B-K2 Black Resigns. 1-0

Place	Name	Rating	Opponent					Score	
			1	2	3	4	5		
1	Steve Smith	1960	x	1	1/2	1	1	3 1/2 - 1/2	--- Wyoming Sr. Champ
2	Marc Lynn	1964	0	x	1	1	1	3-1	'78 Champ Dan Finucane
3	Bruce Johnson	1673	1/2	0	x	1	1/2	2-2	was invited to play,
4	Tom McClew	1892	0	0	0	x	1	1-3	but was unable to do so.
5	Rod Weikum	1588	0	0	1/2	0	x	1/2 - 3/2	

Rod Weikum-Tom McClew RUY LOPEZ 1 P-K4 P-K4 2 N-KB3 N-QB3 3 B-N5 P-QR3 4 BxN QPxB 5 P-Q4 PxP 6 QxP QxQ 7 NxQ P-QB4 8 N-K2 B-Q2 9 QN-B3 N-K2 10 B-K3 N-B3 11 N-Q5 0-0-0 12 0-0-0 B-Q3 13 P-KB4 P-KB3 14 N-N3 KR-K1 15 N-N6+ PxN 16 RxB P-KR4 17 NxRP RXP 18 R-K1 R/1-K1 19 K-Q2 K-B2 20 R-Q3 N-N5 21 R-R3 B-N5 22 N-N3 R-Q1ch 23 K-B1 R-B5 White Resigns. 0-1

Tom McClew-Marc Lynn ALEKHINE'S DEFENSE 1 P-K4 N-KB3 2 P-K5 N-Q4 3 P-Q4 P-Q3 4 N-KB3 B-N5 5 B-K2 P-K3 6 0-0 B-K2 7 P-B4 N-N3 8 P-QN3 0-0 9 B-N2 P-Q4 10 P-B5 N/3-Q2 11 P-N4 P-KB3 12 N/1-Q2 Q-K1 13 R-K1 P-B4 14 P-QR4 P-KN4 15 P-N5 P-B3 16 P-R5 PxP 17 BxP P-QR3 18 B-Q3 N-QB3 19 B-B3 B-R4 20 N-B1 P-N5 21 N/3-Q2 P-N6 22 P-B3 PxPch 23 KxP P-B5 24 R-N1 R-N1 25 Q-R4 B-N3 26 RxP BxB 27 QxN RxR 28 QxP+ K-R1 29 QxQP R-N4 30 P-K6 N-B3 31 Q-N5 N-K5 32 Q-K5ch B-B3 33 RxN BxQ 34 RxB R-B4 35 R-K1 K-N1 36 N-K4 BxN 37 RxB R-N8 38 B-K1 Q-K2 39 N-Q2 RxB White Resigns. 0-1

Bruce Johnson-Steve Smith DUTCH DEFENSE 1 c4 f5 2 Nf3 Nf6 3 g3 e6 4 Bg2 Be7 5 0-0 0-0 6 d4 d5 7 Nbd2 c6 8 Ne5 Nbd7 9 Nd3 Ne4 10 Qc2 g5 11 Nf3 Qe8 12 Nfe5 Nxe5 13 Nxe5 Nd6 14 c5 Nf7 15 f4 g4 16 b4 Nxe5 17 dxe5 b5 18 Bb2 a5 19 a3 Bd7 20 Kf2 Qh5 21 Rh1 Qg6 22 Bd4 Ra6 23 Bc3 Rfa8 24 Bd4 h5 25 Bc3 h4 26 Rhe1 Kf7 27 Bd4 Qh6 28 Bc3 Qf8 29 Bd4 R8a7 30 Rcb1 Qa8 31 Qc1 Ke8 32 Ke1 Kd8 33 Kf2 Kc7 34 Bc3 Kb7 35 Bd4 Qh8 36 Qc2 Qh6 37 Rc1 Ra8 38 Bc3 Rh8 39 Bd4 hxg3+ 40 hxg3 Bh4 41 e3 Bxg3+ 42 Ke2 Qg7 43 Rh1 Bh4 44 Bc3 a4 45 Rag1 Ra-a8 46 Qd1 Rag8 47 Qf1 Be8 48 Be1 g3 49 Bf3 Bh5 50 Rg2 Bxf3+ 51 Qxf3 Rh6 52 Rh3 Qh8 53 Bxg3 Bxg3 54 Rhxg3 Rxxg3 55 Qxxg3 Rh1 56 Qxxg7+ Qxxg7 57 Rxxg7+ Kc8 58 Re7 Rh6 59 Kf2 Kd8 60 R-g7 Rh1 61 Rg1 Rh7 62 Kf3 Ke7 63 Kf2 Kf7 64 Rg2 Rh4 65 Rg3 d4 66 exd4 Rxf4+ 67 Ke3 Rf1 68 Ke2 Rb1 69 Rh3 Ke7 70 Rh7+ Kd8 71 Rh8+ Ke7 72 Rh7+ Kd8 73 Rh8+ Ke7 74 Rh7+ Drawn. 1/2-1/2

Steve Smith-Tom McClew PIRC DEFENSE 1 P-K4 N-KB3 2 N-QB3 P-Q3 3 P-Q4 P-B3 4 P-B4 P-KN3 5 B-K2 B-N2 6 B-K3 0-0 7 Q-Q2 QN-Q2 8 P-K5 N-K1 9 P-KN4 N-B2 10 0-0-0 P-QN4 11 N-K4 P-Q4 12 N-N3 P-QR4 13 P-B5 N-N3 14 B-R6 N-B5 15 Q-B4 B-R1 16 BxR QxB 17 PxNP RPXP 18 P-KR4 N-K3 19 Q-B2 B-KN2 20 N-R3 P-R5 21 P-N5 NxQP 22 RxN P-K3 23 RxN NPXR 24 Q-B4 R-QN1 25 R-B1 R-N2 26 N-B2 Q-B4 27 N-N4 Q-N3 28 P-N3 RPXP 29 RPXP PxP 30 PxP QxP 31 K-Q2 P-Q5 32 K-K1 R-R2 33 K-B2 P-Q6 34 B-Q1 Q-N7ch 35 K-N1 P-QB4 36 P-R5 P-B5 37 PxP PxP 38 QxP Q-N3ch 39 R-B2 B-QR3 40 Q-B4 B-N4 41 N-B6ch BxN 42 QxB R-R8 43 QxNPch K-R1 44 Q-R5ch K-N1 45 N-K4 Q-Q5 46 Q-B7ch K-R1 47 Q-B8ch K-R2 48 N-B6ch Black Resigns. 1-0

ANSWERS TO PROBLEMS ON PAGE 5: 1 Q-K4 K-N5 2 Q-K1ch K-R6 3 Q-R5 Checkmate. (Left)
1 Q-K4 K-N5 2 Q-K5 K-R6 3 Q-QR5 Checkmate. (Right)

USCF - Grandmaster Florin Gheorghiu of Romania took clear first at the 1979 US Open Championship held at the Palmer House in Chicago, July 29 to August 10. He scored 10 1/2 in twelve rounds and finished 1/2 point ahead of American Grandmaster Arthur Bisguier, who finished clear second.

ENTRY BLANK - MONTANA PRISON OPEN

Please find enclosed my check or money order as entry fee for the Montana Prison Open:

Name: _____ ID Number: _____
Address: _____ Latest Rating: _____
City: _____ State: _____ Zip: _____ Phone No.: _____

Place: World of Work Room, Education Building, Montana State Prison Ranch, Box 7, Deer Lodge, Montana 59722. (West of Deer Lodge - See map.)

Registration: See entry blank page 7.

ADVANCE REGISTRATION REQUIRED. NO LATE REGISTRATION. NO REGISTRATION AT SITE.

Entries must be postmarked no later than Sept. 7, 1979. Mail to Bill Lynch, 1144 Harvard Ave., Billings, MT 59102.

(Note: Relatives, close friends or persons on an inmates regular visitors list may not enter.)

Entry: Adults \$3.00, Juniors (under 19) \$2.00.

Memberships: US Chess Federation membership required. \$15.00 Adult, \$8.00 Junior, \$2.50 Participating Junior. Montana Chess Association membership required. \$3.00 Adult, \$2.00 Junior. USCF + MCA = \$15.00 Adult, \$8.00 Junior, \$4.00 Participating Junior.

Rounds: 4RSS 40moves/100minutes (25/hour) 9:00am,2:00pm/9:00am,2:00pm.

Prizes: Trophies per entries. (Probably 1st,2nd,1st C,1st D,1st & 2nd Inmate.)

Directors: Bill Lynch, James Joseph, Charles A. Jacobs, Jr.

Notes: Visitors should arrive by 8:30am on Saturday and Sunday for check-in through the Security gate. Visitors will leave as a group on Saturday after the completion of Round 2. Visitors may leave individually at the completion of their Round 4 game on Sunday. Intermediate departures and reentries will not be allowed either day. While not playing, visitors and inmates may lounge and/or discuss chess in the adjacent library.

Visitors may purchase meal tickets for \$1.00/meal at the check-in gate. Tournament play will be temporarily suspended for meals each day at 11:00am (Lunch) and 4:00pm (Dinner) in the cafeteria. No food may be brought in through the gate. Sets and boards will be provided by the Montana Chess Association. Visitors may bring chess clocks, books and personal effects (pens, pencils, keys, wallets - but not, of course, pocket knives).

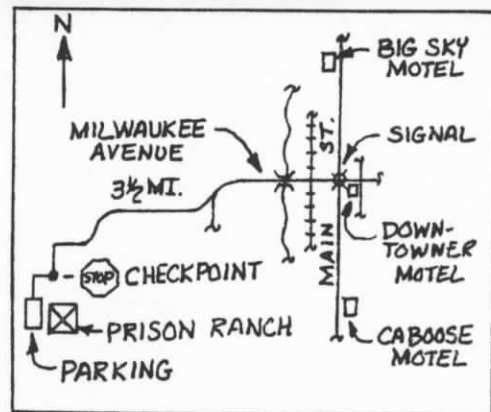
TOURNAMENT ANNOUNCEMENT Sponsor - Montana Chess Association
MONTANA JUNIOR OPEN AND SCHOLASTIC TEAM CHAMPIONSHIP

Exact date, location and details have not yet been determined. Preliminary plans call for a late October or early November event in Bozeman, MT with prizes for individual winners and for two man teams representing High Schools, Junior Highs or Elementary Schools. Details will be sent to all schools and to all known Junior players a month or more in advance.

TOURNAMENT ANNOUNCEMENT Sponsor - Montana Chess Association
THANKSGIVING OPEN November 17-18, 1979 Great Falls, MT

Arrangements still being made. Details will appear in the November newsletter.

*****8*****



PRESORTED
FIRST CLASS

MEMBER
ASSOCIATION OF US
CHESS JOURNALISTS

Montana Chess
Association
MONTANA CHESS NEWS
William M. Lynch
Editor
1144 Harvard Ave.
Billings MT 59102