



MONTANA CHESS NEWS

JULY 1979

VOLUME IV ISSUE 4

SEIRAWAN 34 - MONTANA 1

KEN SHINN AWARDED MONTANA TITLE OVER LOY, HOENE

STEVE SMITH REGAINS WYOMING TITLE ON TIE-BREAKS OVER WEIKUM

TOURNAMENT ANNOUNCEMENT

Sponsor - Montana Chess Association

KING'S GAMBIT OPEN

July 21-22, 1979

Place: Madison & Jefferson Rooms, MSU Student Union, Bozeman, MT 59715.

Reg: 9:00-10:00am, Entry Fee = \$4.00 Adult, \$2.00 Junior (Under 19).

Rounds: 4RSS 40/100 (25/hr) 10:00am, 2:00pm, 7:00pm/1:30pm.

Member: Montana Chess Association membership required. \$3.00 Adult, \$2.00 Junior.

Includes one year subscription to Montana Chess News. Current subscribers may pay pro-rated fee to upgrade to full membership.

Prizes: Open Section - 1st \$20, 2nd \$10.

Reserve Section (Under 1300 & Unrated) 1st \$15, 2nd \$8.

Best Game - \$20 (Tentative Judges - Bill Lynch, Jim Loy, Howard Hoene.)

Dir: Bill Lynch

Entry: Jim Loy, P.O.Box #1236, Bozeman, MT 59715.

Notes: Insofar as possible everyone will receive two Whites and two Blacks.

All games must begin with the moves 1 P-K4 P-K4 2 P-KB4.

This tournament will not be rated by the US Chess Federation.

For an overview of the King's Gambit opening see Jim Loy's article on page 6.

Informal meeting of the MCA Board of Directors at 10:00am Sunday at Sambo's

Restaurant, 319 N. 7th St. Free coffee - buy your own breakfast.

TOURNAMENT ANNOUNCEMENT

Sponsor - Billings YMCA Chess Club

BILLINGS RIMROCK OPEN

August 25-26, 1979

Place: Billings YMCA, Meeting Rooms, 402 N. 32nd St., Billings, MT 59101

Reg: 9:00-9:45am, Entry Fee = \$8.00 Adults, \$5.00 Juniors (Under 19).

Rounds: 5RR 45/2hr (23/hr) 10:00am, 2:30pm, 7:00pm/9:30am, 2:00pm. 6 man sections determined by ratings. Lowest section 5SS for 6-12 players including non-rateds.

Member: USCF membership required, \$12 Adult, \$6 Junior; MCA membership required, \$3 Adult, \$2 Junior. May join at site.

Prizes: \$30 1st each Section. 2nd Prize in lowest section based on entries.

Dir: Bill Lynch

Entry: Bill Lynch, 1144 Harvard Ave., Billings, MT 59102.

Notes: Adjourned games will be completed between rounds if possible or after round 5.

TOURNAMENT ANNOUNCEMENT

Sponsor - Montana Chess Assoc. / Montana State Prison CC

MONTANA STATE PRISON OPEN

September 22-23, 1979

Place: Montana State Prison Ranch, Deer Lodge, MT 59722

Full details, including advance registration materials will be in the September issue.

OPEN SECTION

Place	Name	Rating	RD1	RD2	RD3	RD4	RD5	RD6	Score	Tie-Breaks	Prizes
1	Yasser Seirawan WA	2495	W6	W5	W8	W11	W2	W7	6-0		\$100
2	Ken Shinn	1683	W12	D3	W15	W8	L1	D5	4-2	20 $\frac{1}{2}$	MT Trophy
3	Jim Loy	1588	W14	D2	L11	W10	D5	W8	4-2	16 $\frac{1}{2}$	2nd Trophy
4	Howard Hoene	1459	L5	L6	Bye	W13	W9	W12	4-2	14	3rd Trophy
5	Bill Lynch	1658	W4	L1	W12	D6	D3	D2	3 $\frac{1}{2}$ -2 $\frac{1}{2}$	23	
6	Matthew Guthrie	1578	L1	W4	W13	D5	L8	W14	3 $\frac{1}{2}$ -2 $\frac{1}{2}$	19	Top C-\$15*
7	Jim Magorian	1633	W13	L8	D10	W15	W11	L1	3 $\frac{1}{2}$ -2 $\frac{1}{2}$	18	
8	Kip Stubberud	1744	W9	W7	L1	L2	W6	L3	3-3	24	
9	Gordon Shuck	1569	L8	L13	W14	W12	L4	W11	3-3	14	Top Sr. Tr.**
10	Don Norrid	1119	W16	L15	D7	L3	D14	Bye	3-3	12 $\frac{1}{2}$	
11	Bob Jordan	1609	D15	W16	W3	L1	L7	L9	2 $\frac{1}{2}$ -3 $\frac{1}{2}$		
12	Roland Brodniak	1552	L2	W14	L5	L9	W15	L4	2-4	17	
13	Neale Sikveland	1326	L7	W9	L6	L4	Bye	WD	2-3	13 $\frac{1}{2}$	
14	Dick Mecklenberg (1111)		L3	L12	L9	By3	D10	L6	1 $\frac{1}{2}$ -4 $\frac{1}{2}$	15	
15	Terrance Mitchell	1262	D11	W10	L2	L7	L12	WD	1 $\frac{1}{2}$ -3 $\frac{1}{2}$	14 $\frac{1}{2}$	
16	Mike Jenson	1595	L10	L11	Withdrew				0-2		

RESERVE SECTION

1	Sam Hoomiratana	1380	W13	W6	W3	D4	W2	W7	5 $\frac{1}{2}$ - $\frac{1}{2}$		1st Trophy
2	Jack Reddy	1434	W11	D4	W10	W7	L1	W6	4 $\frac{1}{2}$ -1 $\frac{1}{2}$		2nd Trophy
3	Andy Shuck	1471	W8	W7	L1	L6	W5	W4	4-2	1****	3rd Trophy
4	Ray Jorgenson	1115	W10	D2	W8	D1	W6	L3	4-2	0	Top D-\$15
5	Garroll Salmons (1299)		D9	L8	W14	W10	L3	W11	3 $\frac{1}{2}$ -2 $\frac{1}{2}$		Top E-\$15
6	Doug Brock	1103	W12	L1	W11	W3	L4	L2	3-3	22 $\frac{1}{2}$	
7	Lyle Petersen	1257	W14	L3	W12	L2	W9	L1	3-3	19	
8	Duane Hildenstab	1248	L3	W5	L4	L12	W14	W13	3-3	15/11	
9	Gary Ritchie	1284	D5	L10	W13	D11	L7	W12	3-3	15/10	
10	Anthony Mattina	1335	L4	W9	L2	L5	D13	W14	2 $\frac{1}{2}$ -3 $\frac{1}{2}$	16 $\frac{1}{2}$	
11	Coyle Long	1213	L2	W14	L6	D9	W12	L5	2 $\frac{1}{2}$ -3 $\frac{1}{2}$	16	
12	Dennis McCord	758	L6	W13	L7	W8	L11	L9	2-4		
13	Chuck Chapman	1121	L1	L12	L9	W14	D10	L8	1 $\frac{1}{2}$ -4 $\frac{1}{2}$		
14	Dan Ballas (847)		L7	L11	L5	L13	L8	L10	0-6		

AMATEUR SECTION

1	Leslie Gunderson (1361)		W2	W4	D3	W5	W6	W7	5 $\frac{1}{2}$ - $\frac{1}{2}$		1st Trophy
2	Lowell Luke (1304)		L1	W7	W5	W3	W4	W6	5-1		2nd Trophy
3	Steve Sherrod (1204)		W8	W5	D1	L2	W7	W4	4 $\frac{1}{2}$ -1 $\frac{1}{2}$		3rd Trophy
4	Shaun Higgins (1017)		W7	L1	W6	W8	L2	L3	3-3	19	
5	Mark Wood (985)		W6	L3	L2	L1	W8	Bye	3-3	16 $\frac{1}{2}$	
6	David Mathon (871)		L5	W8	L4	W7	L1	L2	2-4		
7	Adam Laceky 853		L4	L2	W8	L6	L3	L1	1-5		
8	Seth Foster (573)		L3	L6	L7	L4	LF	WD	0-5		

Notes: Ratings in parentheses are post-event ratings hand calculated from the results of this tournament for pairing use until ratings are published by USCF.

The Amateur Section was not a rated tournament.

*Also Top Junior - Performance ratings were used for tie breaks with results as follows: Guthrie - 1699, Andy Shuck - 1367, Leslie Gunderson - 1394.

**Performance ratings were used for tie-breaks: Gordon Shuck - 1467, Jack Reddy - 1434.

***Individual game results were used as first tie-breaker in two way ties.

A more complicated method of breaking the Junior and Senior Title ties between sections using the probability statistics which are a part of the USCF rating system produced the same results as the use of performance ratings. The latter are much simpler to calculate, so for the sake of simplicity, I've printed the performance ratings and will use this method in the future, hopefully avoiding the delay in awarding the trophies which was necessary this time. - WML

RD1 Seirawan-Matthew Guthrie ENGLISH 1 P-QB4 P-K3 2 N-QB3 N-KB3 3 P-K4 P-K4 4 P-QR3 P-QR4 5 N-KB3 N-QB3 6 P-Q4 PxP 7 NxP NxN 8 QxN P-QN3 9 P-K5 B-QB4 10 Q-B4 N-N1 11 B-Q3 B-N2 12 Q-N4 P-N3 13 B-KN5 P-KB3 14 B-R4 Q-K2 15 O-O-O O-O-O 16 KR-K1 Q-B1 17 PxP NxP 18 Q-N5 B-K2 19 RxB QxR 20 QxN Q-B4 21 Q-N5 Q-Q3 22 P-B5 QxRP 23 PxP PxP 24 B-N3 QxP 25 N-N5 Q-B3+ 26 K-N1 Black Resigns. 1-0

RD2 Bill Lynch-Seirawan ROBATSCH DEFENSE 1 e4 g6 2 d4 d6 3 f4 a6 4 Nf3 b5 5 Be3 Bb7 6 B-13 Nf6 7 Nbd2 Bg7 8 h3 0-0 9 0-0 Nbd7 10 c3 c5 11 Qe1 e6 12 e5 Ne8 13 Ne4 cxd4 14 cxd4 N-b6 15 Rc1 Nd5 16 Rf2 f5 17 Neg5 Qd7 18 Nh4 Bh6 19 Nhf3 Ng7 20 Kh2 Nh5 21 g3 Rad8 22 Bf1 dx e5 23 dxe5 Bg7 24 Bc5 h6 25 Bxf8 Bxf8 26 Nxe6 Qxe6 27 a3 Qb6 28 Bg2 Ne3 29 Bh1 Rd3 30 Rd2 Rxd2+ 31 Qxd2 Nc4 32 Qe2 Bc5 33 Nh4 Be6 34 Rd1 Nxf4 35 Qf1 Nd2 36 Rxd2 Bxd2 37 gxf4 g5 38 Nxf5 Bxf4+ 39 Ng3 Qe3 40 Qg1 Qd2+ 41 Bg2 Bxg3+ 42 Kxg3 White Resigns. 0-1

RD3 Seirawan-Kip Stubberud ENGLISH 1 P-QB4 N-KB3 2 N-QB3 P-KN3 3 P-KN3 P-Q4 4 PxP NxP 5 B-N2 NxN 6 NPxN P-QB4 7 R-N1 Q-B2 8 Q-R4+ N-Q2 9 P-R4 P-KR4 10 N-R3 B-N2 11 N-B4 O-O 12 N-Q5 Q-Q3 13 B-QR3 P-K3 14 N-K3 N-N3 15 Q-R5 R-Q1 16 P-Q4 N-Q4 17 BxP P-N3 18 NxN PxB 19 Px P Q-Q2 20 P-B6 Q-Q3 21 R-Q1 K-R1 22 N-K3 BxP+ 23 QxB+ Black Resigns. 1-0

RD4 Bob Jordan-Seirawan ROBATSCH DEFENSE 1 e4 g3 2 d4 d6 3 Nf3 Bg7 4 Be2 Nf6 5 Nc3 0-0 6 0-0 Bg4 7 Be3 Nc6 8 Ng5 Bxe2 9 Qxe2 e5 10 Nf3 exd4 11 Nxd4 Nxe4 12 Nxe4 Nxd4 13 Bxd4 Bx d4 14 c3 Bg7 15 Qf3 Re8 16 Rfe1 Re6 17 Rad1 Qe8 18 Re2 Qc6 19 R1e1 Rae8 20 Kf1 Qa6 21 Ng3 Be5 22 Ne4 Bg7 23 Ng3 c6 24 a3 d5 25 Kg1 Rxe2 26 Rxe2 Rxe2 27 Qxe2 Qxe2 28 Nxe2 Kf8 29 f3 Ke2 30 Kf2 Bh6 31 g3 Bd2 32 b3 c5 33 h3 Kd6 34 f4 Kc6 35 a4 b5 36 axb5+ Kxb5 37 Kf3 a5 38 g4 c4 39 White Resigns. 0-1

RD6 Jim Magorian-Seirawan ROBATSCH DEFENSE 1 P-K4 P-KN3 2 P-Q4 P-Q3 3 N-QB3 P-QR3 4 B-K3 B-N2 5 P-KB4 P-QB4 6 P-K5 B-N2 7 N-B3 P-N5 8 N-K2 BxN 9 PxB 10 Q-Q2 N-QB3 11 N-N3 KN-K2 12 B-Q3 N-Q4 13 B-K4 QN-K2 14 P-B4 PxPe.p. 15 PxBP R-QN1 16 P-B4 NxB 17 QxN P-QB4 18 Px BP QPxP 19 R-Q1 Q-B2 20 PxP BxP 21 N-K2 O-O 22 P-B4 B-B3 23 P-KR4 KR-QB1 24 P-R5 QxBP? 25 R-Q8ch RxR 26 QxQ R-N7 27 Q-R5 N-B4 28 PxP RPxP 29 R-R3 N-Q4 30 NxN RxN 31 B-Q3 RxBP 32 Q-R3 R-N5 33 QxRP B-R5ch 34 RxB RxP 35 Q-B8ch K-N2 36 Q-B6 RxRP 37 B-K2 R-R3 38 B-Q1 QR-KN7 39 K-B1 R-Q7 40 K-N1 R-R5 41 Q-R4 R-K5 42 K-B1 P-K4 43 Q-N3 R-R5 44 K-K1 White loses by time forfeit. 0-1 A narrow escape which preserved Seirawan's perfect score (not to mention his rating) and ruined Jim's bid for the State Title.

EXHIBITION Seirawan-Bill Lynch ENGLISH 1 c4 Nf6 2 Nc3 e6 3 e4 c5 4 f4 d6 5 Nf3 Nc6 6 g3 g6 7 Bg2 Bg7 8 d3 a6 9 0-0 Qc2 10 Kh1 0-0 11 Be3 b6 12 Rc1 Bb7 13 Qd2 Rad8 14 Bg1 d5 15 e5 Ne4 16 Qe2 Nxc3 17 bxc3 dxc4 18 dxc4 Rd7 19 Rfd1 Rfd8 20 Rxd7 Rxd7 21 Ng5 Qd8 22 Ne4 Ne7 23 Rb1 Nc8 24 Bf2 Kh8 25 Kg1 Bf8 26 h4 Kg7 27 h5 Be7 28 g4 Bxe4 29 Qxe4 Rd1+ 30 Bf1 Rxb1 31 Qxb1 Bb4 32 Be3 Be7 33 Bg2 Na7 34 Bb7 a5 35 Bf3 Qc7 36 Qe4 Qb8 37 a4 Qc7 38 Qa8 Qd7 39 h6+ Kxh6 40 Qg8 Black Resigns. 1-0

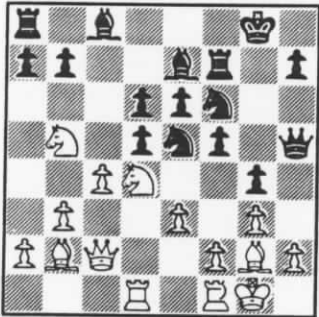
EXHIBITION Seirawan-Kip Stubberud ENGLISH 1 P-QB4 N-KB3 2 N-QB3 P-KN3 3 P-KN3 B-N2 4 B-N2 O-O 5 N-B3 P-Q3 6 O-O P-B4 7 P-QR3 N-B3 8 R-N1 P-QR4 9 N-K1 B-Q2 10 N-B2 P-R5 11 P-Q3 N-QR4 12 B-N5 N-N6 13 BxP R-N1 14 B-N2 Q-R4 15 N-K3 B-K3 16 R-K1 (If 16 BxN BxB 17 KN-Q5 BxN5 and now if 18 NxB then N-Q7!) KR-K1 17 Q-B2 N-Q2 18 N/B-Q5 BxN 19 NxB N-Q5 20 Q-Q1 N-QB3 21 P-QN4 PxPe.p. 22 RxP? RxR 23 B-Q2 QxP 24 N-B7 R-QB1 25 N-N5 RxN?! (Q-R7 or Q-R5 is probably better.) 26 PxR N-Q5 27 B-N5 P-B3 28 B-B4 NxP 29 B-Q5+ K-R1 30 B-K6 R-Q1 31 B-B4 NxP 32 Q-B2 N-N3 33 B-B1 Q-N5 34 B-Q2 P-B4 35 B-K6 R-QN1 36 K-B1 P-Q4 37 R-R1 B-B3 38 P-R4 Q-Q5 39 R-R6 Q-K4? 40 B-B4 QxB/3 41 BxR P-Q5 42 B-B4 Q-B3 43 K-N1 Q-N2 44 R-R5 N-Q2 45 B-B1 B-K4 46 B-N2 K-N2 47 R-R3 N-K4 48 Q-N3 Q-B3 49 R-R7 BxNP? 50 PxB N-K6 51 K-B2?? (51 Q-N7! and if Q-Q3 then 52 Q-B3; Yasser was now expecting 51...Q-N7+) 51...Q-R8! and White Resigns as he cannot avoid mate. 0-1 Notes by Stubberud. This was Yasser's only loss in the exhibition against 23 wins and no draws.

Seirawan also swept to a 5-0 victory in the 5-minute speed chess tournament held on Sunday, May 27th. Kip Stubberud took second place with a 4-1 score, losing only to Yasser.

This newsletter is now the official publication of the Montana Chess Association. In accord with that designation, the name has reverted to MONTANA CHESS NEWS. However, full coverage of Wyoming events reported in time for publication will continue.

Steve Smith, of Casper, won the Wyoming State Title for the third time in the past six years at the Wyoming Open, held in Casper, May 26-28. He topped a group of four players tied at 4½-1½. Rod Weikum, also from Casper, placed second, while Rick Buchanon and Doug Greenwalt, both from Colorado, were third and fourth on tie breaks. Former Wyoming Champion Marc Lynn, of Meeteetsee, South Dakotan Steve Haataja, and Tom McClew, of Casper were a half point back at 4-2. Twenty-two players participated in the 6RSS event held in excellent facilities at the Ramada Inn.

(No crosstable or games from this event were received. They may be published at a later date.-ED)



After 15...N-K4

interpolation. h If KxN, then QxP. i White's position is now totally passive. j Forcing a spite check. (Notes by Ken Shinn.)

RD4 BD2 Kip Stubberud (1744)-Ken Shinn (1683) DUTCH DEFENSE 1 P-Q4 P-K3 2 P-K3 P-KB4 3 N-KB3 N-KB3 4 P-KN3 B-K2 5 B-N2 O-O 6 P-QB4 Q-K1 7 O-O P-Q3 8 N-QB3 QN-Q2 a 9 Q-B2 Q-KR4 10 P-QN3 R-B2 b 11 B-N2 P-QB3 12 QR-Q1 P-KN4 c 13 P-Q5 d BPxP 14 N-QN5?! P-KN5 15 N-Q4 N-K4 e 16 N/Q4xKP BxN 17 BxN f PxB 18 N-B7 P-B5 19 KPxP B-B4 g 20 Q-K2 PxP 21 NxR P-B6 22 Q-K5 PxB 23 KR-K1 N-K5 24 RXP NxBP 25 R-Q8ch h BxR 26 Q-Q5 N-R6ch 27 KxP i B-Q2! 28 QxQ R-B7ch 29 K-R1 B-B3ch j 30 Q-Q5ch K-N2 31 P-QN4 BxQch 32 PxB R-Q7 and Black won in 48 moves. 0-1

a A good move according to E.Papp. (1961 MT Champ.-ED) b A useful move - defending and making manuevers possible. c White crosses the frontier line. d Note Black's pawn structure. e Note Black's mass of pawns and pieces in the center. f Removing the offender. g A useful

RD6 BD1 Lyle Petersen (1257)-Sam Hoomiratana (1380) BIRD'S OPENING 1 P-KB4 P-K3 2 N-KB3 N-KB3 3 P-Q3 B-QN5 4 B-Q2 BxB 5 QxB P-Q4 6 N-B3 O-O 7 O-O-O N-KN5 8 P-K4 PxP 9 NxP P-KB4 10 N-B2 NxN 11 QxN P-QN3 12 N-K5 B-N2 13 R-KN1 N-B3 14 P-Q4 Q-Q4 15 P-QN3 QR-Q1 16 P-QB3 NxN 17 BPxN P-QB4 18 B-QB4 Q-B3 19 R-Q2 P-QN4 20 B-K2 PxP 21 P-QB4 Q-QB4 22 Q-B4 P-Q6 23 Q-R4 QxR+ 24 K-N2 QxNP 25 K-B3 PxB 26 RxR P-K8=Qch 27 QxQ RxR 28 Q-R4 Q-Q7mate. 0-1

RD1 BD3 Leslie Gunderson-Lowell Luke SICILIAN 1 e4 c5 2 Nc3 d6 3 Nf3 Nc6 4 d4 cxd4 5 Nx d4 Nf6 6 Nxc6 bxc6 7 Bf4 e5 8 Be3 Be7 9 Bc4 O-O 10 f4 Qc7 11 O-O h6 12 fxe5 dxe5 13 Qe2 Re8 14 Rad1 c5 15 Nd5 Qb7 16 Nxf6 Bxf6 17 Bd5 Qa6 18 Qxa6 Bxa6 19 Rf5 Rab8 20 b3 Rbc8 21 g4 c4 22 g5 Bxg5 23 Bxg5 hxg5 24 Bxf7+ Kh8 25 Bxe8 Rxe8 26 Rxg5 cxb3 27 axb3 Bb7 28 Rd7 Bxe4 29 R5xg7 Bxc2 30 Rc7 Rg8 31 Rxg8+ Kxg8 32 Rxc2 Black Resigns. 1-0

RD2 BD3 Jim Loy (1588)-Ken Shinn LARSEN'S OPENING 1 b3 f5 2 Bb2 d6 3 e3 e5 4 f4 Nc6 5 Nf3 e4 6 Nd4 Nf6 7 Bb5 Bd7 8 Bxc6 bxc6 9 Qe2 c5 10 Nb5 a6 11 N5a3 Be7 12 c4 O-O 13 Nc3 Bc6 14 O-O Qd7 15 d3 Rae8 16 dxe4 Bxe4 17 Nxe4 Nxe4 18 Nb1 Qe6 19 Nc3 Nxc3 20 Bxc3 Bf6 21 Bxf6 Rxf6 22 Rfe1 Qe4 23 Qd2 Rfe6 24 Re2 Qb7 25 Rae1 R8e7 26 Qd5 Qxd5 Drawn. ½-½

RD5 BD2 Jim Magorian (1633)-Bob Jordan (1608) CARO KANN 1 P-K4 P-QB3 2 P-Q4 P-Q4 3 N-QB3 PxP 4 NxP N-Q2 5 B-QB4 KN-B3 6 N-N5 P-K3 7 Q-K2 N-N3 8 B-Q3 QxP 9 KN-B3 Q-N5ch 10 P-QB3 Q-K2 11 N-K5 B-Q2 12 N/NxBP R-KN1 13 O-O N-B1 14 R-K1 N-Q3 15 NxNch QxN 16 B-KN5 O-O-O 17 N-B7 Q-Q4 18 NxR QxB/5 19 NxKP Black Resigns. 1-0

RD6 BD2 Ken Shinn-Bill Lynch (1658) PHILIDOR DEFENSE 1 e4 e5 2 Nf3 d6 3 d4 exd4 4 Nxd4 g6 5 Nc3 Bg7 6 Bc4 Nf6 7 O-O O-O 8 Re1 Re8 9 f3 Nbd7 10 Be3 c6 11 Qd2 Qc7 12 Rad1 Ne5 13 Bf1 b6 14 Nb3 Re6 15 Nc1 Bb7 16 b3 Rad8 17 Nd3 d5 18 Nxe5 Qxe5 19 exd5 Nxd5 20 Ne4 Rde8 21 Bf2 Qb2 22 c4 Qxd2 23 Rxd2 Nc3 24 c5 Nd5 25 Red1 Ba8 26 Bc4 bxc5 27 Nxc5 R6d7 28 Ne4 Nb6 29 Nd6 Nxc4 30 Nxe8 Nxd2 31 Nxc7 Nxf3+ 32 gxf3 Kxg7 33 Rd2 a6 34 Bc5 Rc7 35 Rd8 Bb7 36 b4 Rc8 37 Rd7 Rb8 38 Ba7 Bc8 39 Rxf7+ Kxf7 40 Bxb8 Be6 Drawn. ½-½

RD3 BD1 Steven Sherrod-Leslie Gunderson RUY LOPEZ 1 e4 e5 2 Nf3 Nc6 3 Bb5 Nf6 4 Nc3 d5 5 exd5 Nxd5 6 Nxd5 Qxd5 7 Bxc6 bxc6 8 O-O e4 9 Ne1 Ba6 10 d3 exd3 11 Nxd3 O-O-O 12 Re1 Bx d3 13 cxd3 Qxd3 14 Qxd3 Rxd3 15 Bf4 Bb4 16 Rf1 Bd2 17 Rad1 Rhd8 18 g3 Bxf4 19 Rxd3 Rxd3 20 gxf4 Rd2 21 Rb1 c5 22 Kf1 c4 23 Ke1 c3 24 a3 c2 25 Rc1 Rd4 26 Rxc2 Rxf4 27 b4 Re4+ 28 Re2 Rxe2+ 29 Kxe2 Kd7 30 Kd3 Kc6 31 Kc4 a6 32 a4 f5 33 b5+ Kb6 34 bxa6 Kxa6 35 Kb4 g6 36 :5 h5 37 h4 c5+ 38 Kxc5 Kxa5 39 Kd5 Kb5 40 f4 Kb6 41 Ke5 Kc5 42 Kf6 Kd5 43 Kxg6 Ke4 44 Kx n5 Kxf4 45 Kg6 DRAWN. ½-½

Place	Name	Rd1	RD2	RD3	RD4	RD5	Score
1	Jim Loy	W5	W4	W2	D3	W6	4 $\frac{1}{2}$ - $\frac{1}{2}$
2	Keith Bayern	W11	W10	L1	W6	W3	4-1
3	Lon Doll	W13	D6	W10	D1	L2	3-2
4	Ed Sheehan *	W9	L1	L6	W7	W8	3-2
5	Leslie Gunderson	L1	W7	W13	L8	W10	3-2
6	Jae Mathison	W8	D3	W4	L2	L1	2 $\frac{1}{2}$ -2 $\frac{1}{2}$
7	Chuck Borland	D14	L5	W11	L4	W12	2 $\frac{1}{2}$ -2 $\frac{1}{2}$
8	Brent Remer	L6	D9	W14	W5	L4	2 $\frac{1}{2}$ -2 $\frac{1}{2}$
9	Ruth Graham	L4	D8	L12	W14	W13	2 $\frac{1}{2}$ -2 $\frac{1}{2}$
10	Bob McLeod	W12	L2	L3	W11	L5	2-3
11	Eric Munshower	L2	W12	L7	L10	W14	2-3
12	Ty Schulz	L10	L11	W9	W13	L7	2-3
13	Donny Wilkins	L3	W14	L5	L12	L9	1-4
14	Shannon Lennick	D7	L13	L8	L9	L11	$\frac{1}{2}$ -4 $\frac{1}{2}$

The annual business meeting of the Montana Chess Association was called to order at 5:30pm on Sunday, May 27th in the state tournament playing rooms.

Secretary/Treasurer, Bill Lynch, reported that the Association had accumulated interest on the treasury and the incidental profit from one tournament held during the year, leaving a new balance of \$153.00 in the treasury.

Kip Stubberud, chairman of the Constituion Committee appointed last year, presented a new Constitution for consideration as the replacement for the original, of which written record was lost in 1973. He explained the salient points, indicating that much of the language was borrowed from the Colorado State Chess Association Constitution, which enabled that group to gain IRS recognition as a non-profit organization. It is hoped thereby that Montana can achieve the same status. After discussion, and a few minor modifications, the new Constitution was adopted unanimously by those present.

In addition to the main body of the Constitution, these bylaws were adopted:
1. Annual membership dues shall be \$3.00 for adults and \$2.00 for juniors (under 19 years of age.) - (Payment of dues entitles members to one year's subscription to Montana Chess News and participation in all events sponsored by the Association.)

2. All players in Montana Chess Association sponsored events (except in specially designated sections) shall be required to join the Montana Chess Association.

The new Constitution calls for five elected officers to form a Board of Directors to conduct the Association's business between annual meetings. In accord with that requirement, nominations were accepted and the following officers elected: President - Bill Lynch, Vice President - Ken Shinn, Secretary - Chuck Chapman, Treasurer - Howard Hoene, Junior Vice President - Andy Shuck.

Billings was approved as the location for the 1980 State Tournament.

Approval was given for the formation of two committees. A Chess Promotion Committee, to be headed by Bill Lynch and/or Ken Shinn is to explore possible avenues of increasing the popularity of Chess in Montana, and a Corporation Committee is to consider the costs and benefits of incorporating the Montana Chess Association.

Finally, the following expenditures from the MCA treasury were approved:
1. \$40 for printing and distributing the September issue of Jim Loy's instructional newsletter, Chess Lessons, to all High Schools in the State.
2. \$35 for the purchase of one dozen tournament chess sets with paper boards from Kip Stubberud at the price he paid for them to the US Chess Federation.

(Note - copies of the new Constitution will be available at future tournaments, or can be obtained by sending a self addressed envelope to Bill Lynch, 1144 Harvard, Billings, 59102.)

NEXT ISSUE: More games from the State Open, lots of King's Gambits and full results of the Rimrock Open. Plus details on fall tournaments, a review of the new book by Walter Korn - America's Chess Heritage - and a look at Montanan's favorite openings in tournament play.

Gambits in general, and the King's Gambit in particular, evoke visions of wild, tense chess games in which sacrifices, combinations, attack, defense and brilliance are key words. The idea of a gambit is to give up material (usually a pawn) in exchange for an advantage in development, central control or combinations of these and other advantages. In addition, upsetting the dynamic balance of the game produces the chief characteristic of the gambit - tension. Mistakes by either side become more devastating. It is this increase in tension which makes gambits the most interesting of openings.

The classical way of defeating a gambit is to return the material at the "right time." This is because it can prove to be suicidal to try to hold onto the gambit pawn if you neglect your development and the safety of your King. But, the material must not be returned too soon, so that the gambit player must work to regain it, thereby losing his advantages in space and development.

The King's Gambit was the most popular of the gambit openings, tremendously so in the 19th Century. In the 1858 edition of Bilguer's Handbuch, 363 pages were devoted to openings, apportioned as follows:

King's Gambit	138 pages	Queen's Gambit	16 pages
Bishop's Opening	42 "	Ruy Lopez	14 "
Giuoco Piano	36 "	Latvian Gambit	12 "
Scotch Game	24 "	Sicilian Defence	10 "
Two Knights Defense	18 "		

In fact, the King's Gambit largely died out because it had been over-played and over-analyzed. A similar fate befell the Queen's Gambit and the Open Ruy Lopez in the 20th Century.

The King's Gambit begins with 1 P-K4 P-K4 2 P-KB4. The King's Bishop Pawn is the "Gambit Pawn". The main ideas behind 2 P-KB4 are (1) the opening of the King Bishop file to attack Black's kingside and (2) controlling the center by removing Black's king pawn. The following is a summary of the main variations:

- A King's Gambit Accepted: 1 P-K4 P-K4 2 P-KB4 PxP:
- A1 King's Knight Gambit: 3 Nf3:
- A11 Fischer Defense: 3...P-Q3 (planning ...P-KR3 and ...P-KN4) 4 B-B4 (or P-Q4) 4...P-KR3. The Fischer Defense is considered the main line nowadays.
- A12 Modern Defense: 3. P-Q4 (This was extremely popular in the 1940's and 50's) 4 PxP .
- A13 Kieseritzky Gambit: 3...P-KN4 (The old defense.) 4 P-KR4 (See A14 for 4 B-B4) 4...P-KN5 5 N-K5. The Allgaier Gambit, 5 N-KN5, involves a Knight sacrifice because 5... P-KR3 traps the knight.
- A14 Muzio Gambit: 3...P-KN4 4 B-B4 P-KN4 5 O-O! White's fast development gives him a strong attack. Even though White will lose a piece, the main line leads to a draw.
- A15 Cunningham Gambit: 3...B-K2 4 B-B4 and now Black can either move 4...B-R5ch or develop with 4...N-KB3.
- A2 Bishop Gambit: 3 B-B4 (This is not considered as strong as 3 N-KB3, but it is an aggressive move.) 3...N-KB3 planning ...P-Q4.
- A3 Others: 3 N-QB3 = Keres Gambit (3...Q-R5ch 4 K-K2). 3 Q-B3 = Breyer Gambit.
- B King' Gambit Declined: 2...B-B4 3 N-KB3 (3 PxP loses at least a rook.) 3...P-Q3 and, while White cannot capture the Kingpawn, Black's position is considered passive.
- C Falkbeer Counter Gambit: 2...P-Q4 3 KPXP P-K5 (3...PxP transposes to A12 above.) The Falkbeer has a good reputation. It ruins White's ideas of attack, and puts him on the defensive. It is however considered drawish. 4 P-Q3.

*****6*****

PRESORTED
FIRST CLASS

MEMBER
ASSOCIATION OF US
CHESS JOURNALISTS

Montana Chess
Association
MONTANA CHESS NEWS
Editor
William M. Lynch
1144 Harvard Ave.
Billings MT 59102