

# MONTANA WYOMING



# CHESS NEWS

JANUARY 1979

VOL. IV - ISSUE 1

TOURNAMENT ANNOUNCEMENT  
3RD COPPER KINGS OPEN

Sponsor - Montana Chess Association  
February 24-25, 1979

Place: Butte Community Center, 25 W. Front St., Butte, MT 59701.  
Reg: 9:00-9:30am, Entry Fee = \$7.00.  
Rounds: 5RR 50/2hr (25/hr) 9:30am, 2:00pm, 7:00pm/9:00am, 1:30pm. 6 man sections determined by ratings. Lowest section 5SS for 6-12 players including non-rateds.  
Member: USCF Membership req'd- \$12, \$6 junior, \$2 participating jr. May join at site.  
Prizes: \$35 1st, \$15 2nd each section.  
Dir: Andy Shuck.  
Entry: Andy Shuck, Route #1, Box #104, Whitehall, MT 59759.  
Notes: Adjourned games will be completed between rounds if possible, or after Round 5.

\*\*\*\*\*

TOURNAMENT ANNOUNCEMENT  
WESTERN MONTANA OPEN

Sponsor - Montana Chess Association  
March 31 - April 1, 1979

Place: University Center, University of Montana, Missoula, MT 59812.  
Reg: 9:00-9:45am, Entry Fee = \$5.00 Adult, \$2.50 under 18.  
Rounds: 5RSS 40/100 minutes (25/hr) 10:00am, 2:00pm, 7:00pm/ 10:00am, 2:00pm.  
Member: USCF Membership req'd- \$12, \$6 jr., \$2 participating jr. May join at site.  
Prizes: Trophies - 1st, 2nd, 1st Class C, 1st Class D, 1st Junior.  
Dir: Bill Lynch  
Entry: Anthony Mattina, 510 E. Beckwith, Missoula, MT 59801.  
Notes: Limited smoking.

\*\*\*\*\*

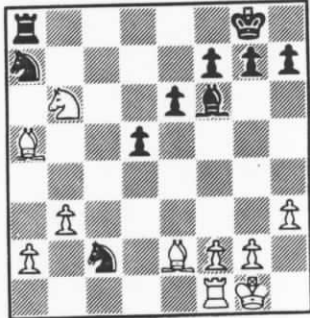
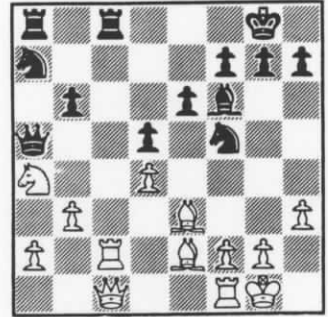
Kip Stubberud, Montana Chess Association President, has been working hard on the preparation of a new constitution for the MCA which would formalize some of our habitual procedures and also provide a basis for an application to the IRS for designation as a non-profit organization. Aside from postage benefits, this would allow the MCA to solicit tax deductible contributions from individuals and businesses. This is a very important step if we are to continue to extend the promotion of chess in Montana, particularly in the realm of scholastic programs.

If you have any suggestions as to ideas which should be included in, or excluded from, the new constitution please write to Kip Stubberud, 1321 Boulder, Helena, MT 59601. He would be particularly interested to know if there is an existing constitution for the MCA, which could be incorporated in the new document. It is hoped that copies of the new constitution can be distributed before the state tournament, and that adoption can be voted on at this year's business meeting.

Kip would also like to have some input as to what possible use might be made of the money in the MCA treasury. We have about \$135. One possibility which has been discussed is the purchase of chess sets and/or clocks in quantity for use and/or resale at tournaments. Let us know if you have any good ideas for putting this money to work for Chess in Montana. This is another matter which will likely be considered during this year's business meeting at the state tournament.

RD4 Andy Fletcher (1691-Canada) - Marc Lynn (1946) ALEKHINE'S DEFENSE, Modern Variation

- 1 P-K4 N-KB3 a 5...P-QB3 and 5...N-QB3 are Black's main alternatives to the text.
- 2 P-K5 N-Q4 b More usual is 8 PxP.
- 3 P-Q4 P-Q3 c Not given in Alekhine's Defense by Eale's and Williams, but the move seems playable. 9...PxP is safest, 9...P-Q4 is a good alternative.
- 4 N-KB3 B-N5 d Transposes back into the main line beginning with 8 PxP. 11 P-Q5 is sharper, but Black gets a good game after 11...BxN! 12 BxB N-K4 13 P-QN3 (not 13 PxP PxP 14 BxP R-N1 15 B-K4 N/3xP and Black is better) NxBch 14 QxB P-K4.
- 5 B-K2 P-K3 a
- 6 O-O B-K2 d
- 7 P-B4 N-N3
- 8 N-B3 b O-O
- 9 B-K3 N-B3 c e Better than N-Q2. Black will organize pressure against the Queen's pawn with B-B3 and N-K2-B4.
- 10 PxP PxP
- 11 P-QN3 d P-Q4 f Shows a lack of understanding of the position. The knight is somewhat exposed on QR4 and is in the way of the QRP. Of course if he could penetrate to QN6, it would be very good. Best here is P-N4.
- 12 P-B5 N-B1 e
- 13 N-QR4 f B-B3 g Clumsy, but apparently the only way to adequately defend the QP.
- 14 R-B1 N/1-K2 g
- 15 R-B2 g N-B4 h Attacking the dark squares along the QR4-K8 diagonal, supporting the advance of the QNP, and threatening, in some instances, to play Q-N5 training one more piece on the QP. In addition, the knight cannot retreat without loss of material. On the negative side, the queen may become exposed and get into difficulties.
- 16 R-Q2 Q-R4 h
- 17 P-KR3 BxN
- 18 BxB P-QN4! i
- 19 PxPe.p. PxP
- 20 B-N4 N-Q3 i Opening lines on the queenside and taking advantage of the precarious position of the White knight.
- 21 R-B2 KR-B1
- 22 B-K2 N-B4
- 23 Q-B1 N-R2?! j j DIAGRAM Now the Black queen is trapped. But, after 24 B-Q2 RxR 25 QxR NxP, White must give up his queen or submit to 26 Q-Q1? Nx Bch 27 QxN Q-N4 28 QxQ NxQ 29 NxP RxP and Black should pick off the unsupported QNP and win easily. However, White can give up his queen in this variation with 26 BxQ NxQ 27 NxP! and an endgame is reached in which White has the two bishops and two connected passed pawns against two knights and two extra center pawns. (See diagram at right.) The knights however are very active and may well turn out better. The endgame thus reached would have called for the greatest precision from both players. The first question that must be answered is whether Black should play to hold the QB file with R-N1 and give up the remaining bishop after 28 N-Q7 R-B1 29 Nx Bch, or retreat the rook to the king file? The endgame would have been very interesting and instructive and it's a pity that White did not choose to go into it. Instead, he tried to find a "safe" way out of the complications and immediately got into trouble.



- 24 RxRch?k RxR
- 25 Q-N2? l P-QN4!
- 26 B-Q2 m Q-Q1 n
- 27 N-B3 NxP! o
- 28 Q-R3 P-N5! o
- 29 QxP p RxN! q
- 30 B-R5 R-B7
- 31 B-K3 N/2-B3 k
- 32 Q-N7 P-N3 l
- 33 B-Q1 RxRP m
- 34 P-QN4 R-R2 n
- 35 Resigns r o Much stronger than BxP. White is helpless against the checks of the Black knight and discovered attacks from the bishop. Also, with the queen on the back rank, the rook is ready to come into play with crushing force and Black's lowly looking QNP is a deadly foe.

p What else? On 29 QxN PxN and Black wins a piece at once. Further, White will probably have to give up another for the pawn.

q The final blow in Black's combination. If 30 BxR Nx Bch 31 K-R1 NxB and Black has three pieces for the rook

r The White queen is trapped.

\*\*\*\*\*

Almost on time. I hope to do better in March. Please submit any material or tournament information by March 1st. For last minute news call (406) 248-6352 after 5:00pm.- Ed.

Jim and Howard played a rated match last summer. Jim won 6-2 with no draws. As he said, "All the games were tactical in nature, with blunders playing an important role." Here, with notes by the winner in each case, are some of those games:

Loy-Hoene ENGLISH 1 c4 Nf6 2 Nc3 e5 3 Nf3 Nc6 4 g3 Bb4 a 5 Bg2 b 0-0 6 0-0 Re8 c 7 Nd5 Bf8 8 d3 d6?! d 9 Bg5 Bg4 10 Qb3?! Rb8 11 Nxf6+ gxf6 12 Bd2 Qd7 13 e4?! e Bg7 14 Nh4? Nd4 15 Qa3 Nc2 16 Qxa7?? Nxa1?? f 17 Rxa1 Ra8 18 Qe3 Kf8 19 f4 Bh6 20 Qf2 Bh3 g 21 f5!? h Bxd2 22 Qxd2 Bxg2 23 Qh6+ Ke7 i 24 Nxc2! Rh8 25 Ne3 Rf8 26 Nd5+ Kd8 27 Qxf6+ Kc8 28 a4 Kb8 29 Qg5 h6 30 Qd2 f6?! j 31 a5 Qc6 32 b4 Rh7 33 Kg2 Qa6 34 b5 Qa8 35 a6 Qa7 36 Ra5 b6 37 Nb4 Qa8 38 Ra1 Kc8 39 g4 k Kd7 40 Qf2 Rg8 41 Qh4 Qf8 42 a7 Qa8 43 Qxf6 Ke8 l 44 Qe6+ Kf8 45 f6 m h5 46 Qd5 Rxc4+ n 47 Kh1 c6 48 Qxc6 Rb7 49 Qxb7 Qxb7 50 a8=Q+ Qxa8 51 Rxa8+ Kf7 52 Nd5 Rh4 53 Ra7+ Kf8 54 f7 Rh3 o 55 Nf6 Kg7 56 Nh7 Resigns. 1-0

a 4...d5 is also good. b 5 Nd5 e4! is not as good for White. c Also popular are 6...Bxc3 and 6...e4. d 8...h6. e Black's Knight will be powerful at d4. f 16...Ra8! 17 Qxb7 Reb8 18 Qd5 c6. g Otherwise the Bishop will be trapped with 21 f5. h Or 21 Bf3 Bg4 22 Bg2 Bh3 Draw. i 23...Kg8 24 Nxc2! Qe7 25 Ne3 Qf8 (otherwise 26 Nd5 or 26 Ng4 wins.) 26 Qxf6 Qg7 27 Nd5 wins another pawn. j Now both of Black's Rooks are anchored to the King-side. k To get the Queen back on the K-side now that Black's Queen is stuck. l Sealed move. Here are some other lines: (a) 43...Re8 44 Qg6 Rhh8 (44...Rhe7 45 f6 Re6 46 Qf7+ and 47 Nd5.) 45 Qg7+ Re7 46 Qxh8! (b) 43...Re7 44 Nc6 Ree8 (44...Rge8 45 Nxe7 Rxe7 46 Qxh6 and White can advance his K-side pawns.) 45 Qf7+ Kc8 46 Ne7+ wins. (c) 43...Rxc4+? 44 Kh3 and White threatens 45 Qe6+ and mate. m To prevent ...Kg7. n 46...c6 47 Qxc6 Kf7 48 Qxb6 may be better. o 54...Rg4 is the only way to stop the f-Pawn.

Loy-Hoene ENGLISH 1 c4 e5 2 Nc3 Nf6 3 Nf3 Nc6 4 g3 Bb4 5 Bg2 0-0 6 0-0 Re8 7 Nd5 Bf8 8 d3 e4 a 9 Ne1 b Ne5! c 10 Bg5 c6 11 Nxf6+ gxf6 12 Bd2 d5 13 cxd5 cxd5 14 dxe4 dxe4 15 Qc2 d f5 16 f3 exf3 17 exf3 Qd4+ e 18 Kh1 Nc4 19 Bc3 Qb6 20 Qc1 Bh6 21 f4 Ne3 22 Rf2 Ng4 23 Rc2 Nf2+ 24 Rxf2 Qxf2 25 Nd3 Qe2 26 Nc5 Rb8 27 Be5 Rxe5 28 Bf1 Qf2 29 Nd3 Qf3+ 30 Bg2 Qxd3 31 Qc7! f Ra8 32 fxe5 Be6 33 Qxb7 Rc8 34 b4 Rc2 35 b5 Rxa2 36 Rf1 Bc4 37 e6 g Bxe6 38 Rf3 Ra1+ 39 Bf1 Rxf1+ 40 Kg2 Rxf3 41 Qxa7 Qe2+ 42 Kh3 f4dis+ 43 Kh4 Qxh2 Mate. 0-1

a Not to be found in the book ENGLISH OPENING by B. Cafferty. b Loy thought this was best for White. Now Black could try 9...Nxd5 10 cxd5 exd3 with even play because of the threat 11...dxe7 forking the Rook and Queen. c Apparently best, partly for psychological reasons. The result of 10 Nxf6+ Qxf6 11 Bxe4 Bb4 12 e3 (Or 12 a3 Bxe1 13 Rxe1 d6 14 Bg2 Ng4?! 15 Rf1 Re5 16 e3 Bf5 17 Bxb7 Rab8 18 Bg2 Qg6! with attack.) d6 13 a3 Bxe1 14 Rxe1 Bg4 15 f3 Bxf3 is unclear. d If 15 Bxe4 Nc4 16 Bd3 Nxb2 17 Qc2 Nxd3. e We were both into our second hour at this point. f With good pressure. g Hoping for a cheapo.

Hoene-Loy SEMI-TARRASCH 1 d4 d5 2 c4 e6 3 Nc3 Nf6 4 e3 a c5 5 cxd5 Nxd5 6 Nf3 cxd4 7 Qx d4 b Nxc3 8 Qxd8+ Kxd8 9 bxc3 Be7 10 Bc4 c Bf6 11 Bd7 Nc6 12 Rb1 Kc7 13 0-0 Bd7 14 Rfc1 Ne5 15 Be2 Nxf3+ 16 Bxf3 Bc6 17 e4 Be5 d 18 Rb4 Rhd8 19 Rc2? Rxd2 20 Rxd2 Bxc3 21 Rdd4 Bxd4 22 Rxd4 Rd8 23 Rc4 Kb8?! e 24 Kh1? f Rd2 25 a3 Ra2 26 h3 Rxa3 27 Rd4 Kc7 28 Rd2 a5 29 Kg1 Ra1+ 30 Kh7 a4 31 Rd4 a3 32 Bh5 a2 33 Bxf7 Rb1 g 34 Resigns. 0-1

a 4 Bg5 or 4 Nf3 are usual. 4 e3 is good though, because it transposes into the main line of any of these openings: 4...Bb4 Nimzo-Indian, 4...c6 Slav, 4...c5 Semi-Tarrasch, 4...dxc4 Queen's Gambit Accepted. b 7 exd4 is usual. c 10 Ne5? Bf6! d Flan-ning ...f5. e 23...Rd2. f Touch move. g Or 33...Rh1+ 34 Kg3 a1=Q.

Hoene-Loy QUEEN'S PAWN 1 d4 Nf6 2 Nf3 d5 3 c4 g6 4 Bg5 Ne4 5 Bf4 c5?! 6 Bxb8 Rxb8 a 7 Qa4+ Bd7 8 Qxa7 Ra8 9 Qxb7 Rb8 10 Qxd5 Qa5+ 11 Nbd2 Nxd2 12 Nxd2 Bh6 13 e3 Rxb2 14 Rd1?? b Ba4 15 dxc5 0-0 16 c6 Qxd5 17 cxd5 Bxd1 18 Kxd1 Rxa2 19 Bd3 c Rd8 20 Ke7 Rxd5 21 Rc1 Rd8 22 Ke1?! Bg7 23 c7?! Rc8 24 h4 Be5 25 Ke2 Rxc7 26 Rh1 Ef3 27 Rd1 Rd7 28 e4 Kg7 29 Ke3 Bd4+ 30 Ke2 d Bxf2 31 Rh1 Bb6 32 Rd1 Ba5 33 Ke3 Rxd3+ 34 Kxd3 Rxd2+ 35 Rxd2 Bxd2 36 Kxd2 Kf6 37 Ke3 Ke5 38 g4 f5 39 exf5 gxf5 40 g5 f4+ 41 Kf2 Kf5 42 Kf3 e5 43 Resigns. 0-1

a Maybe 6...Qa5+. b I expected 14 dxc5! and was planning 14...0-0, since 15 Qxd7 is a blunder. But, 15 c6! is hard to answer. Maybe 14...Bg7 threatening 15...Rxd2 or Qxd2 or Be6 would work. c It's hard to save the d-Pawn. A try would be 19 Nc4 Rb8! 20 Kc1 Rd8 or 20 Bd3 Ra1+. d 30 Kf4 Be5+ 31 Ke3 Bf4+.



RD1 BD3 Andy Shuck(1415) - Bill Lynch(1720) RETI 1 N-KB3 N-KB3 2 P-QB4 P-K3 3 P-KN3 P-QB4 4 B-N2 N-QB3 5 P-Q3 P-Q4 6 PXP PXP 7 B-KB4 B-Q3 8 BxB QxB 9 N-QB3 O-O 10 Q-B2 P-QN3 11 P-QR3 B-N2 12 O-O QR-B1 13 P-K3 P-Q5 14 B-R3 PxB 15 BxB BxB 16 PXP B-R6 17 KR-K1 Q-Q4 18 N-R4 N-K4 19 P-K4 QXP 20 QxQ NxQ 21 KR-K1 NxBP 22 KxN NxPch 23 K-B3 NxBP 24 R-Q3 N-N4 25 P-KN4 P-B4 26 NxP N-Q5ch 27 K-N3 BXP 28 N-K7ch K-B2 29 R-B1ch KxN 30 RxR KxR 31 KxB K-K2 32 K-B4 K-B3 33 P-KR4 P-KR3 34 K-N4 P-QN4 35 R-B3 P-B5 36 P-QR4 P-R3 37 PXP PXP 38 R-B1 P-KN4 39 PXP PXP 40 R-Q1 Black loses on time forfeit. 1-0

RD1 BD5 Bill Pitre(1313) - Jim Loy(1622) QUEEN'S GAMBIT DECLINED 1 P-Q4 P-Q4 2 P-QB4 P-K3 3 N-QB3 N-KB3 4 B-N5 QN-Q2 5 P-K3 P-QB3 6 B-Q3 Q-R4 7 N-B3 N-K5 8 BxN PxB 9 N-K5 Nx N 10 PxB B-N5 11 O-O BxN 12 PxB O-O 13 B-K7 R-K1 14 Q-Q6 QXP 15 QR-Q1 P-KB3 16 PXP PXP 17 R-Q4 K-B2 18 B-Q8 P-B4 19 Q-B7ch K-N3 20 Q-N3ch K-B2 21 Q-R4 P-QB4 22 QXPch K-B1 23 B-B6 Resigns. 1-0

RD2 BD2 Matthew Guthrie(1560) - Kip Stubberud(1771) SICILIAN 1 P-K4 P-QB4 2 N-KB3 P-Q3 3 P-Q4 PXP 4 NxP N-KB3 5 N-QB3 P-KN3 6 B-K3 B-N2 7 B-QB4 N-QB3 8 Q-Q2 B-Q2 9 P-B3 R-QB1 10 B-N3 Q-R4 11 O-O-O O-O 12 N-Q5 QxQch 13 RxQ N-K4 14 NxPch K-R1 15 NxR RxN 16 K-N1 P-QR4 17 P-QR3 P-QN4 18 N-K2 B-B1 19 B-N5 K-N2 20 KR-Q1 N-K1 21 B-KB4 P-B3 22 N-Q4 N-B2 23 R-QB1 P-R5 24 B-R2 P-KR4 25 P-B4 N-K3 26 NxNch PxB 27 BxN BPxB 28 R/2-B2 P-N5 29 PXP K-B3 30 P-B5 PXP 31 BxB KxB 32 PXP B-R3 33 R-Q1 B-K6 34 R-Q6ch K-B2 35 P-B6 P-R6 36 PXP B-Q5 37 P-B7 Black loses on time forfeit. 1-0

RD3 BD2 Jim Garvin(1628) - Matthew Guthrie BISHOP'S OPENING 1 P-K4 P-K4 2 B-B4 N-KB3 3 N-QB3 N-QB3 4 P-Q3 B-B4 5 N-KB3 P-Q3 6 B-KN5 P-KR3 7 B-R4 B-QN5 8 O-O BxN 9 PxB N-QR4 10 B-N3 NxB 11 BPxB B-KN5 12 Q-K2 Q-K2 13 Q-K3 O-O 14 P-KR3 B-Q2 15 QR-Q1 KR-K1 16 KR-K1 P-QR3 17 R-Q2 QR-Q1 18 P-Q4 PXP 19 QXP Q-K3 20 BxN QxB 21 QxQ PxQ 22 R/2-K2 R-K2 23 N-Q4 R/1-K1 24 K-B1 R-K4 25 P-KB4 R-K2 26 N-B5 BxN 27 PxB RxR 28 RxR RxR 29 KxR P-Q4 30 P-QB4 PXP 31 PXP P-QN4 32 K-Q3 P-QB4 33 K-K4 PXP 34 K-K3 K-B1 35 K-Q2 K-K2 36 K-B3 K-Q3 37 KxP K-B3 38 P-KN4 K-Q3 39 P-KN4 K-Q3 40 P-QR4 K-B3 41 P-KN5 BPxB 42 BPXP RPXP 43 RPXP K-Q3 44 P-N6 PXP 45 PXP K-K3 46 KxBP Resigns. 1-0

RD3 BD1 Bob McKinnon(1580) - Marc Lynn(1970) RUY LOPEZ 1 P-K4 N-KB3 2 N-QB3 P-K4 3 N-B3 N-B3 4 B-N5 P-Q3 5 O-O B-K2 6 P-Q4 PXP 7 NxP B-Q2 8 N-B5 BxN 9 PxB O-O 10 B-N5 N-K4 11 R-K1 P-B3 12 B-Q3 R-K1 13 BxN BxB 14 N-K4 B-K2 15 P-KB4 NxB 16 QxN P-Q4 17 N-N3 Q-R4 18 P-B3 B-Q3 19 N-R5 Q-N3ch 20 K-B1 RxRch 21 RxR QXP 22 Q-N3 P-KN3 23 N-B6ch K-R1 24 Q-R4 P-KR4 25 Q-N5 K-N2 26 NxPch K-R2 27 PXPch PXP 28 N-B6ch K-N2 29 P-B5 Q-N4ch 30 K-N1 BXP 31 K-R1 B-K4 32 QXPch K-B1 33 N-R7ch K-K2 34 RxBch K-Q2 35 Q-B7ch Resigns. 1-0

RD4 BD6 Jack Reddy(1423) - Claude Laubach(1422) NIMZO-INDIAN 1 P-QB4 P-K3 2 N-QB3 P-QN3 3 P-Q4 B-N2 4 P-K3 N-KB3 5 N-B3 B-N5 6 B-K2 N-K5 7 B-Q2 NxB 8 QxN P-Q4 9 O-O O-O 10 P-QR3 B-Q3 11 P-QN4 P-QR3 12 P-B5 PXP 13 PXP B-K2 14 QR-QN1 15 R-N2 N-Q2 16 N-R2 N-B3 17 N-K5 Q-K1 18 KR-N1 N-K5 19 Q-R5 P-B3 20 NxB QxN 21 N-N4 Q-Q2 22 N-Q3 KR-QB1 23 P-KB3 N-N4 24 N-N4 B-Q1 25 N-Q3 P-B3 26 Q-R4 R-R2 27 R-N6! BxB 28 PxB R-N1 29 R-N3 R/2-R1 30 N-B5 Q-K1 31 P-N7 R-R2 32 Q-R5 N-B2 33 Q-N6 R/2XP 34 NxR N-Q3 35 Q-B7 N-N4 36 BxN RPxB 37 N-Q6 R-Q1 38 NxQ Resigns. 1-0

RD4 BD3 Marc Lynn - Bill Pitre SICILIAN 1 P-K4 P-QB4 2 N-KB3 P-Q3 3 P-QN4 N-KB3 4 PXP PXP 5 N-B3 P-QN3 6 B-B4 P-K3 7 O-O B-N2 8 B-N2 N-B3 9 R-K1 B-K2 10 P-K5 N-Q4 11 N-K4 N-R4 12 B-N5ch B-QB3 13 B-KB1 N-KB5 14 P-N3 N-N3 15 P-Q3 O-O 16 Q-K2 Q-B2 17 P-KR4 Q-N2 18 N/3-N5 P-KR3 19 N-KB3 QR-B1 20 B-B3 P-B5 21 PXP BxN 22 QxB QxQ 23 RxQ N-Be 24 P-R5 N-R1 25 N-Q4 KR-Q1 26 B-K2 B-B4 27 NxN RxN 28 R-Q1 RxRch 29 BxB B-K2 30 B-Q2 P-B4 31 R-Q4 B-B4 32 R-Q8ch K-R2 33 B-K2 N-B2 34 R-Q7 NxP 35 RxRP B-Q5 36 P-QB3 B-B4 37 B-B4 B-Q3 38 R-R6 N-Q2 39 B-B3 N-B4 40 BxB BxB 41 R-R8 B-K4 42 B-K8 P-KN4 43 PXPch K-N2 44 R-R3 N-K5 45 R-N3 BXP 46 RxP B-Q5 47 RxP BXPch 48 K-N2 N-B4 49 R-K7ch K-B1 50 P-N7ch Resigns. 1-0

RD4 BD1 Bob Jordan(1591) - Jim Garvin SICILIAN 1 P-K4 P-QB4 2 N-KB3 N-KB3 3 N-QB3 N-QB3 4 P-Q4 P-Q4 5 KPXP NxP 6 NxN QxN 7 B-K3 B-KN5 8 B-K2 R-Q1 9 P-QB4 Q-KR4 10 P-Q5 P-K3 11 Q-N3 N-K5 12 BxN PxB 13 R-Q1 PXP 14 RxP BxN 15 Q-K3ch B-K2 16 BxB Q-N3 17 O-O Q-KB3 18 BXP O-O 19 R-K4 R-Q2 20 Q-K2 R-B4 21 R/1-K1 R-B2 22 P-QN3 Q-QN3 23 P-KR4 P-KR3 24 R-KB4 R-K2 25 R-K4 R-B2 26 R/1-B1 Q-KB3 Drawn.  $\frac{1}{2}$ - $\frac{1}{2}$

RD4 BD2 Kip Stubberud - Bob McKinnon FRENCH 1 P-K4 P-K3 2 P-Q4 P-Q4 3 P-K5 P-QB4 4 P-QB3 N-QB3 5 P-KB4 Q-N3 6 N-KB3 PXP 7 PXP B-N5ch 8 B-Q2 KN-K2 9 BxB QxBch 10 Q-Q2 B-Q2

11 N-B3 O-O 12 P-N4 P-QR3 13 R-B1 QN-B1 14 B-Q2 P-B7 15 P-Q3  
P-KR3 18 R-N1 P-xN 19 R-N3 BPxP 20 R-xP R-xP 21 R-xR P-xR 22 K-B1 N/2-B4 23 B-xN P-xB 24 QxP Qx  
P 25 R-Q1 R-xN 26 QxN R-B6ch 27 K-N1 QxQ 28 R-xQ B-B3 and Black won in 51 moves. 0-1

RD5 BD2 Bob Jordan - Marc Lynn PIRC 1 P-K4 N-KB3 2 N-QB3 P-Q3 3 P-Q4 P-KN3 4 B-KN5 QN-  
Q2 5 P-B4 P-B3 6 P-K5 P-xP 7 QP-xP P-KR3 8 B-xN P-xB 9 P-xP Q-xP 10 Q-K2ch B-K2 11 P-KN3 O-O  
12 O-O-O N-N3 13 B-R3 B-xB 14 N-xB B-N5 15 R-Q3 KR-K1 16 Q-B3 Q-K3 17 P-B5 Q-xP 18 QxQ P-xQ  
19 R-B1 R-K4 20 R/3-B3 R/1-K1 21 N-B4 R-K8ch 22 N-Q1 N-B5 23 R-xR B-Q7ch! 24 Resigns. 0-1

\*\*\*\*\*

1979 MSU CHESS TOURNAMENT

Tournament Report

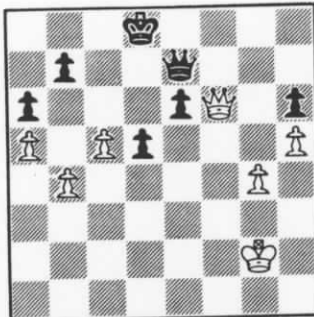
Jan. 24-25, 1979

Dir: Jim Loy

Place	Name	RD1	RD2	RD3	RD4	Score	Tie-Breaks(Cumulative)
1	Keith Bayern	W6	W5	W2	L3	3-1	9
2	Reza-Emad	W3	W7	L1	W4	3-1	8
3	Howard Hoene	L2	W4	W6	W1	3-1	6
4	Wayne Taka	Bye	L3	W5	L2	2-2	6
5	Rich Mecklenberg	W7	L1	L4	W6	2-2	5
6	Terrie McDonnell	L1	Bye	L3	LF	1-2	
7	Wayne Ranslem	L5	L2	WD	WD	0-2	

Bayern and Reza-Emad qual-  
ified to represent MSU at  
the Regional ACU-I tourn-  
ament in Corvallis, OR this  
February.

\*\*\*\*\*



RD5 N.D.OPEN Lynch-Bohm After 41 moves I had 6 minutes for the next  
9 moves. 42 QxRP wins a pawn, but leaves Black his Queen and chances  
for counterplay. Looking again, I found my pawns were just far enough  
advanced to force a win with the Queen's gone: 42 QxQch KxQ 43 P-KN5!  
PxP (43...K-B2 44 PxP and wins as in the game or 43...P-Q5 44 PxP P-  
Q6 45 K-B2! cuts off Black's pawn.) 44 P-R6 K-B2 45 P-R7 K-N2 46 P-  
R8=Qch? (Wastes a tempo - Black has to capture the pawn anyway.) KxQ  
47 P-QN5! PxP 48 P-B6! PxP (And then there was one - but the kamikaze  
attack has assured that it will Queen first!) 49 P-R6 K-N2 50 P-R7  
(With 4 minutes to spare.) K-B3 51 P-R8=Q P-B4 52 Q-KB8ch K-K4 53 QxP  
K-K5 54 QxQNP P-K4 55 Q-B6 K-Q5 56 Q-KB6 K-K5 57 QxNP K-Q5 58 K-B2 P-K5 59 Q-K3ch K-K4  
60 Q-B5 K-K3 61 K-K3 K-K4 62 Q-K7ch K-B4 63 K-Q4 K-B5 64 Q-K5ch K-B6 65 QxQP K-B5 1-0

\*\*\*\*\*

UNIFORM CHESS NOTATION

Beginning January 1, 1981, the World Chess Federa-  
tion (FIDE) will recognize only the algebraic notation  
system for its own tournaments and matches. What this  
will mean to the average U.S. player is not clear as the  
U.S. Chess Federation has not yet adopted an official  
policy governing notation to be used in USCF tournaments.  
While it is unlikely that the USCF will ban the use of  
Descriptive notation, there are still many good reasons  
for the average player to take the time to learn the new  
notation system.

Primarily, the time is coming when the majority of  
chess publications will contain games recorded only in  
algebraic. My policy with N/WCN is to publish all games  
in the notation in which they are submitted. More and  
more games are being recorded in algebraic. I don't  
mind. In fact, algebraic is easier to type, takes up  
less space and is easier to proofread as there are not  
as many ambiguities.

Algebraic is definitely spreading, and the player  
who refuses to learn it will do himself a great dis-  
service by his failure to comprehend the great chess  
literature recorded in this style.

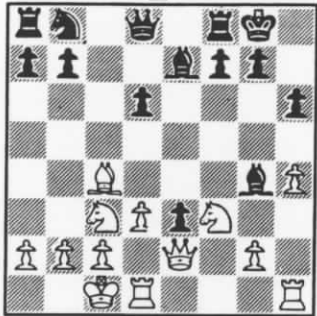
Descriptive		Algebraic	
1 P-K4	P-K4	1 e4	e5
2 P-KB4	PxP	2 f4	exf4
3 N-KB3	P-KN4	3 Nf3	g5
4 B-B4	P-N5	4 Bc4	g4
5 BxPch	KxB	5 Bxf7+	Kxf7
6 N-K5ch	K-K1	6 Ne5+	Ke8
7 QxP	N-KB3	7 Qxg4	Nf6
8 QxBP	P-Q3	8 Qxf4	d6
9 N-KB3	R-N1	9 Nf3	Rg8
10 O-O	R-N5	10 O-O	Rg4

Black								
8	a8	b8	c8	d8	e8	f8	g8	h8
7	a7	b7	c7	d7	e7	f7	g7	h7
6	a6	b6	c6	d6	e6	f6	g6	h6
5	a5	b5	c5	d5	e5	f5	g5	h5
4	a4	b4	c4	d4	e4	f4	g4	h4
3	a3	b3	c3	d3	e3	f3	g3	h3
2	a2	b2	c2	d2	e2	f2	g2	h2
1	a1	b1	c1	d1	e1	f1	g1	h1
	a	b	c	d	e	f	g	h
White								

I often tease Howard Hoene about the King's Gambit, calling it a "garbage opening", when, in fact, it is a superior weapon for the tactical player, creating tense positions with problems for both sides. Howard has done extensive analytical work on the lines evolving from 5 P-KR4 against Fischer's Defense, and has had several articles printed in

- |                   |                |
|-------------------|----------------|
| Hoene             | Lynch          |
| 1 P-K4            | P-K4           |
| 2 P-KB4           | PxP            |
| 3 N-KB3           | P-Q3           |
| 4 B-QB4           | P-KR3          |
| 5 P-KR4           | N-KB3          |
| 6 N-QB3           | B-K2           |
| 7 P-K5            | N-N5           |
| 8 PxP             | PxP!? <u>a</u> |
| 9 P-Q3 <u>b</u>   | N-K6 <u>c</u>  |
| 10 BxN            | PxB <u>d</u>   |
| 11 Q-K2           | O-O            |
| 12 O-O-O <u>e</u> | B-N5           |



- |                     |                 |
|---------------------|-----------------|
| 13 P-KN3? <u>f</u>  | R-K1            |
| 14 N-Q5             | B-B3            |
| 15 NxP? <u>g</u>    | BxPch!          |
| 16 KxB <u>h</u>     | Q-N3ch          |
| 17 B-N3             | RxN             |
| 18 Q-B2             | QN-Q2? <u>i</u> |
| 19 QR-KB1 <u>j</u>  | BxN             |
| 20 K-B1             | N-K4            |
| 21 Q-Q2             | R-QB1           |
| 22 P-Q4             | N-Q6ch!         |
| 23 K-N1             | QxP             |
| 24 PxN              | R-K7!           |
| 25 BxPch            | K-R1            |
| 26 Resigns <u>k</u> |                 |

chess publications in the U.S. and England. Ever since an off-hand game we played about four years ago, he has credited me with the move 7...N-N5, which has been severely tested in analysis (it is remarkable that Howard and I have never met in a tournament game), but has held up as a good defense. In the last issue of M/WCN we had a game between Howard and Marc Lynn where White tried 8 PxP. In December, Howard and I explored this line further in a game played at the Billings YMCA Chess Club:

- a "looks atrocious, but might be alright."-Lynn. I wanted to see if Black could take advantage of Q-N3 at some point to increase the pressure on White's Kingside. Howard feels 8...BxP is strongest, citing 9 O-O O-O 10 P-Q3 B-K3 11 N-Q5 P-B3 12 NxP BxB! (13 PxB B-B4ch 14 K-R1 N-B7ch+) and 9 O-O O-O 10 P-Q4 B-KB4 11 N-Q5 B-K5! (12 NxKBP B/5xN 13 QxB QxP±).
- b In retrospect, 9 P-Q4, blocking the diagonals of Black's Queen and King's Bishop, appears much better.
- c After 9...Q-N3 10 Q-K2 O-O?! then 11 QxB? Q-B7ch 12 K-Q1 QxNP! is pretty, but White has 11 N-Q5!
- d Black has the two Bishops, open diagonals, and, at least temporarily, the extra pawn.
- e Not 12 QxP? R-K1! with multiple threats of discovered attack.
- f A weak move. From the diagram, we both thought during the game that 13 QxP BxN 14 QxB BxP lost a pawn. But, White had 15 RxB! QxR 16 QxNP±. So, Black should play, 13...N-B3 with perhaps a slight advantage because of the two Bishops.
- g After 15 NxBch QxN 16 QR-B1 Q-K2 Black is still better. Perhaps, 15 QR-KB1, building the pressure on KB7, might be best.
- h Forced. If 16 K-Q2 or 16 K-N1 then 16...B-Q5! wins.
- i I was worried about my back rank, but 18...BxN is safe enough.
- j White should try a more active defense beginning with 19 N-N5?! in an attempt to exploit his threats at KB7. If 19...N-K4 20 NxP NxN 21 QxNch K-R1 22 QR-KB1± or 19...N-B3 20 NxP K-R2 21 NxQP BxR 22 N-B4=. Black does have 19...R-KB1! which secures his position and wins at least the exchange, but it is not an easy move to find.
- k An exciting game! - The "main line" after 7...N-N5 begins with 8 P-Q4 PxP 9 Q-K2! which we may be able to look at in a future issue.

\*\*\*\*\*6\*\*\*\*\*

CHESS JOURNALISTS  
 ASSOCIATION OF US  
 MEMBER

MONTANA / WYOMING  
 CHESS NEWS  
 William M. Lynch  
 Editor  
 1144 Harvard Ave.  
 Billings MT 59102