

MONTANA

CHESS NEWS

Volume 24, Issue 2 — May, 1999

In this issue:

— *Montana Open Preview Edition* —

Agenda for the Annual Business Meeting

Special Insert: *Constitution and Bylaws*

Robert's Rules of Order

Nowak Sweeps Game/15 Bookworm

Déjà vu all over again at Crocus Open

82nd Armored Division wins Team Tourney

GREATEST RATING GAIN
OF 1998

???? ??????

SEE PAGE 3

Highly sometimes order important is!

A thumbnail sketch of Robert's Rules of Order

The MCA's Annual Business Meeting will be held in Bozeman at the site of the Montana Open on Sunday, May 23, at 8:30 a.m. Like all our business meetings, it is supposed to be run in accordance with the parliamentary procedure known as Robert's Rules of Order. While high powered debating skills are not expected at MCA meetings, observing some of the following basic rules will keep the meeting more on track.

Obtain the floor before you make a motion. Do this by standing, raising your hand, or just saying "Hey, Doug!" to the presiding officer (the chair). The chair will then "recognize" you.

A member who has the floor cannot be interrupted except in certain circumstances. These include requests for information and "points of order" (called when someone breaks the rules.) With requests for information, speakers are not required to yield for a question, but usually they will. If you are the questioner, avoid getting into a back-and-forth discussion with the member who has the floor. You will get your turn to speak later.

Once you have spoken on a topic you are not allowed to speak again until everyone else with something to say about it has had a turn.

Before debate can even begin on a motion it must be seconded, and then stated clearly by the chair. Two notable

exceptions to this rule are nominations and points of order, neither of which require a second.

Debate on a motion continues until cut off by the oddly-named "motion for the previous question." This motion requires a two-thirds vote to succeed.

Once a motion is made, members may offer amendments, and even amendments to the amendments. The value of parliamentary procedure becomes especially clear in such cases, since without rules and order it is easy to get confused about what, exactly, everyone is talking about.

The rules call for a ten minute limit per speaker in debate. Happily, this is a limit not often tested in our business meetings, since players are usually eager to get on with the games.

It is often possible to get a lot of the work done by unanimous (or "general") consent. If nobody objects, the chair has the latitude under the rules to shepherd many of the formalities through the meeting without requiring a vote. If you think things get going too fast you should object.

To take something out of order or to consider something not on the agenda, there must be a motion to "suspend the rules." This requires a two-thirds majority to pass.

Lastly, debate about a motion should always be based on its merits, and must never be allowed to get personal. You can say, "This motion is dumb!", but you can't say, "Boy, are you dumb!" Save that kind of talk for your post-game analysis.



Agenda for the Annual Business Meeting

Here is the agenda for the Annual Business Meeting of the MCA, to be held 8:30 Sunday morning, May 23rd, at the site of the Montana State Open (MSU in Bozeman.) All members are urged to attend and make their voices heard on these issues and others that may arise.

Governor's Cup - There is a proposal to establish that whoever is State Champion at the time of the State Open shall be the player invited to the following Governor's Cup tournament in South Dakota.

Grand Slam Award - There are two proposals concerning this special award, now given to any player who wins four Grand Prix events in a single year. 1) Reduce the requirement to three tournaments in a year. 2) Abolish it.

Seeding for the Closed (1) — There is a proposal to seed the highest-rated resident MCA member automatically into the Closed Championship.

Seeding for the Closed (2) - There is a proposal to change the seeding used in case of tied champions from the previous year. Current bylaws seed the champion who had the best showing in the previous Montana Open. The proposal is to give the seeding to the player who had the best tiebreak points

in the Closed itself (the trophy winner.) This would not take effect until next year, so Alex Dawson is this year's qualifier regardless.

Grand Prix System - There are several proposals for changing the Grand Prix system: 1) Abolish it. 2) Declare any city's first tournament to be that city's Grand Prix event, provided 10 or more players participate. 3) Allow two Grand Prix events per affiliate instead of one.

Prize for Grand Prix - Current bylaws call for an award to the Grand Prix Champion but do not specify what that award should be. There is a proposal to specify a cash prize to the winner. This would take effect in the following season.

Vote by mail issue (constitutional amendment) - There is a proposal to require the MCA to conduct a vote by mail on any legitimate issue which a member raises.

Bid for a national tournament - MCA President Doug Hansen would like us to consider submitting a bid to the USCF to sponsor one of the smaller national tournaments. Discussion of pros and cons would help clarify some of the possibilities.

Other topics may also be debated if a two-thirds majority of members at the meeting decide to consider them.

En passant

Sherwood Moore relates some sad news: He recently received a call from Lyle Petersen's wife informing him that Lyle had died. Lyle, active for many years in the Missoula chess scene, succumbed on April 3rd while recovering from a stroke and a broken hip.

The community of chess players is diminished by Lyle's parting. We will miss his wit and companionship.

The next newsletter will include an article about Lyle, together with fond recollections of his club play by some of the players who knew him the best.



MCA Board Members (1998-1999)

Doug Hansen - President (761-4517)

Michael Jensen - Vice President (721-0131)

Thad Suits - Secretary/Treasurer (453-6160)

Patrick McDonald - Eastern V.P. (655-0812)

Daniel McCourt - Western V.P. (721-0254)

Let them know about your ideas, complaints, suggestions, and praise.

Montana Chess News is published by the Montana Chess Association, an affiliate of the U. S. Chess Federation. Subscription and membership in the MCA is \$9/yr regular, \$5/yr junior.

Editor - Thad Suits, 2015 4th Ave N.

Great Falls, MT 59401

(406) 453-6160 E-mail: suits@initco.net

All submissions are welcome, including photos. Articles by E-mail or on a PC-formatted diskette are especially appreciated. Among the formats supported are ASCII text, Swis-Sys, WordPad, Microsoft Works, Publisher, Lotus and .PGN.

Publishing Schedule:

Issue 1 - Mar. 1, Issue 2 (Special for the Open) - May 10, Issue 3 - July 31, Issue 4 - Sept. 25, Issue 5 - Dec. 8. Deadline for most submissions is ten days before the publication date.

Grand Prix Race Leaders

Nowak, G	20.83
McCourt, D	14.56
Hansen, D	12.18
Katzl, R	9.73
Suits, T	9.05
Brownlee, K	8.65
Dawson, A	8.52
Borchardt, J	8.52
Skovron, J	7.62

Biggest Upset to Date

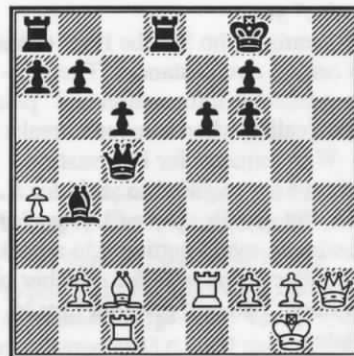
Sam Hardy - 422 points

The Grand Prix circuit and the upset derby end each year with the Montana Open. Above are the leading players going into this final event of the season.

Did you find (or miss) a subtly sharp move in one of your games? If so, send it to the editor and ask

What's the Cruncher?

Black is up two pawns here, but a cruncher lurks in the position to take away this advantage. Can you find it? The answer is on the back page.



White to move and crunch.

Nowak repels invaders from Washington

Crocus, Bookworm, Northwest Team Tourney, and other recent events

Crocus Open

Eight players from Spokane made the trip to Missoula this past April 17th-18th in order to compete in the Crocus Open. These welcome invaders from Washington made up half the field, but it was homeboy Greg Nowak who took first place with 4½ points. Spokane visitor Curt Collyer tied with another Missoula player, Rudy Katzl, at 4 points each to get 2nd-3rd place.

Jeremy Younker broke even for the tournament to win the under 1600 prize. His round one upset of Sherwood Moore might also have won best upset if it had not been for Ron Weyland of Spokane. Ron took home prizes for both best under 1400 and best upset for his defeat of David Griffin — a 221 rating point spread.

The win also gave Nowak a lead in the Grand Prix race with only the Montana Open left to play. This could be crucial to his chances to compete in the Closed, since he has said he probably will not attend the Open.

▲

**GREATEST RATING GAIN
OF 1998**

DOUG HANSEN

55 POINTS

▼

The tournament drew eighteen players as well as some interested onlookers; it was an example of how chess can work well with corporate sponsorship. Special thanks to mall manager Jannis Conselyea for arranging the site and providing gift certificates as prizes.

Proceeds from the event benefited the MCA, so thanks also should go to the tournament organizer, Mel Drake, for carrying through on another good idea.

Steinitz Memorial

Rudy Katzl and Greg Nowak tied for first place in this three-round, game/60 event in Missoula on March 20th. Both players won their first two games and lost half a point only to that always-tough-to-beat competitor, the last round bye.

Mike Jensen, Dan McCourt, and Bob Leader tied for 3rd-5th place, with Rich Hall, a new and still unrated USCF member, coming within a whisker of getting an upset draw against Katzl. In turn, 12 year old Johnny Legan gave Hall a scare but came up short in the end.

Northwest Team Tourney

—by Greg Nowak

On April 24th, six teams of four each battled it out at the Shack Restaurant in Missoula. Going into round three, three teams were tied at 1.5 for first place. By the end of round four the *Clandestine Threats* (Nowak, Mitchell, Gilbertson and Sweeney) were dead even with the *82nd Armored Division* (Jensen, Andersen, Bentley, and Kinn) in both game and match points.

In the final confrontation the *82nds* shot down the *Phantom Horses* while the *Clandestines* were held to a stand-off draw by the surprising third place *Patriots of the Impossible* — a team picked to finish last!

The upset of the tourney was Jeremy Sapp's flabbergasting win over heavy favorite and 2175-rated Max Burkett.

Best board prizes went to Nowak, Hans Andersen, Dale Gross, and Bob Kinn. Gross and Kinn were a perfect 5-0.

UCCC 3rd Winter Open

Sherwood Moore held on for a draw against Romie Carpenter in the last round of the 3rd Winter Open to win clear first place.

Western Montana Bookworm

Greg Nowak twice went 5-0 to win both the Open section and an afternoon "Gluttons for Punishment" section in Missoula's Bookworm on March 27th. In the morning session of this pulse-quickenning game/15 event Thad Suits took second with 3½ points, and in the afternoon Romie Carpenter did the same.

In the Reserve section it was Rich Hall of Stevensville who was a near perfect 4-1 to win first place honors, while Bob Leader of Plains earned a respectable second in his first tournament as an official MCA member.

Final tournament note: After losing twice to the Octopus, and then getting trounced in some casual speed games, Suits wants it known that he is changing his nickname from "The Shark" to "The Flounder."

Last Chance Gulch vs. World

Jim Borhardt of Helena won all four of his games to take first place at this one-day unrated tournament put on by Helena's Last Chance Gulch Chess Club. The event, open to anyone who could push a pawn in the right direction, took place at the Capitol Hill Mall in Helena on March 27th, and was sponsored by the Mall.

From the Bull Moose

Just a note to say thanks to you and the MCA Board for the kind words. The article and the plaque are greatly appreciated!

Also, here's a few non-animal monikers to add to your list:

- William "The Conqueror" McBroom
- Romie "The Hammer" Carpenter
- David "The Duke of Hazard" Duke

—Sherwood Moore

☆☆☆☆☆☆☆☆☆☆☆☆☆☆☆☆☆☆☆☆

☆☆☆☆☆☆☆☆☆☆☆☆☆☆☆☆☆☆☆☆
★ Vote for (your name here) ★

★
★ Serving on the Board of Directors is a great way to contribute to the MCA. It really doesn't require a big time commitment. All you need to be an effective board member are these three qualities:

- ★ • The willingness to listen to members and to respond to their suggestions.
- ★ • The ability to provide clear-headed leadership where you think it is needed.
- ★ • The patience to deal with a nagging MCA Secretary.

★ If you think you have these qualities, please consider running for office at the Annual Meeting this month.

★ Check out the job descriptions as listed in the MCA Constitution reprinted in this issue. An occasional letter or phone call is about all that is involved.

★ Just don't let the awesome power of your office corrupt you if you are elected.

☆☆☆☆☆☆☆☆☆☆☆☆☆☆☆☆☆☆☆☆

MCA officer elections: Who is going to carry the ball for 1999-2000?



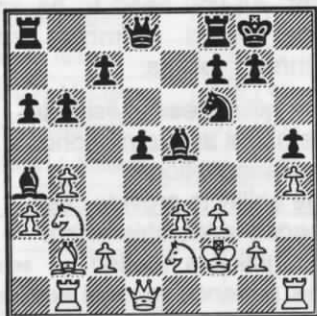
(Yes, I know penguins and polar bears live in opposite hemispheres. Haven't you ever heard of "suspension of disbelief"? — Ed.)

Recent Games

Nickolai,G (2450) - Nowak,G (2390)
Queen Pawn Opening [D00]
USA-Latvia Postal Match

Greg Nowak played in the USA-Latvia Postal Match last summer. He was pitted against a very strong player (check out that rating!), but he proved equal to the task, going 1½-½ in the two-game match.

1.d4 Nf6 2.Nc3 d5 3.f3 h6 4.e3 a6 5.Bd3 Nc6 6.a3 e5 7.Nge2 Bd6 8.Kf2 Ne7 9.b4 h5 10.dxe5 Bxe5 11.h4 Nf5 12.Bxf5 Bxf5 13.Nd4 Bd7 14.Rb1 b6 15.Nce2 0-0 16.Nb3 Ba4 17.Bb2?



Even a player rated 2450 in postal chess can lose sight of tactics. After 17.Nf4 or maybe 17.g3, White is cramped, but can fight on indefinitely.

17...Bxb2 18.Rxb2 Ng4+! 19.Kg1 Nxe3 20.Qd4 Re8 21.Kf2 Nf5 22.Qf4 Rxe2+! 23.Kxe2 Qf6 0-1

Besides the obvious threat of ...QxR, there is also ...BxN, followed by ...Nd4+, leading to the win of the queen.

Moore,S (1730) - Carpenter,R (1822)
King's Indian [A42]
UCCC 3rd Winter Open

1.d4 g6 2.c4 Bg7 3.Nc3 d6 4.e4 Nc6 5.Nf3 e5 6.d5 Nd4 7.Nxd4 exd4 8.Ne2 c5



9.dxc6 Qa5+ 10.Qd2 Qxd2+ 11.Bxd2 bxc6 12.0-0-0 c5 13.Nf4 Ne7 14.Bd3 a5 15.Rde1 Ba6 16.Nd5 Nxd5 17.exd5+ Kd7 18.Re2 Rhe8 19.Rhe1 Rxe2 20.Rxe2 a4 21.f4 Re8 22.Kc2 Rxe2 ½-½

Gisselbeck,D (1380) - McBroom,W (1593)
Caro-Kann [B10]
UCCC 3rd Winter Open

1.e4 c6 2.Bc4 d5 3.exd5 cxd5 4.Bb3 Nf6 5.Nf3 Bg4 6.0-0 e6 7.d4 Bd6 8.Be3 0-0 9.Nbd2 Nc6 10.h3 Bh5 11.c4 Na5 12.c5 Be7 13.Ba4 Rc8 14.b4 Nc6 15.a3



15...Ne4 16.Qb3 Nxd2 17.Nxd2 e5?! 18.Bxc6 bxc6 19.dxe5 Bg5 20.f4 d4 21.Ne4? [21.fxg5 dxe3 22.Qxe3] 21...dxe3 22.Nxg5 e2 23.Rfe1 Qd4+ 24.Kh2 Qxf4+ 25.Qg3 Qxg3+ 26.Kxg3 Rcd8 27.Nf3 Bxf3 28.gxf3 Rd2 29.Kf2 Re8 30.Ke3 Red8

30...Rb2 is better, leaving pressure on the white king.

31.Rxe2 R2d3+ 32.Kf2 Kf8

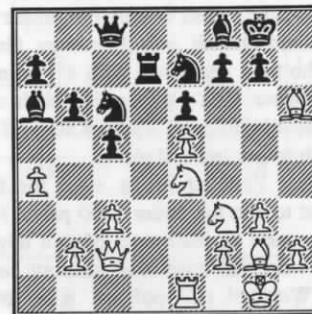
It was probably time to make the manoeuvre ...Rb3, ...Rdd3.

33.e6! fxe6 34.Rxe6 Rd2+ 35.Kg3 Re8 36.Rae1 Ra2 37.R1e3 Rb2 38.Re7 a5 39.Rb7 Rd8 40.Ree7 Rdd2 41.Rec7 Rd8 42.Rxg7 Rb1 43.Rxh7 Rg1+ 44.Kf2 Rg8 45.Rbc7? [45.Rhf7+ Ke8 46.Rbe7#] 45...axb4 46.axb4 Rb8 47.Rxc6 Ke8 48.Rcc7 Kd8 49.Ra7 Kc8 50.b5 Rd8 51.Rac7# 1-0

Atkins,C (1965) - Brennan,L (1882)
King's Indian Attack [A08]
1999 National Open - Las Vegas
Notes by Brennan.

1.Nf3 c5 2.g3 Nc6 3.Bg2 Nf6 4.0-0 e6 5.d3 d5 6.Nbd2 Be7 7.e4 dxe4 8.dxe4 0-0 9.c3 Qc7 10.Qc2 b6 11.Nc4 Ba6 12.Bf4 Qb7 13.Nfd2 Rad8 14.Rfe1 Qc8 15.Rad1 Bb7 16.a4 Rd7 17.Nf3 Rfd8 18.e5 Nd5 19.Bg5 h6 20.Bc1 Ba6 21.Ncd2 Bf8 22.Ne4

Nde7 23.Rxd7 Rxd7 24.Bxh6? [24.Nd6 is better here. —Ed.]



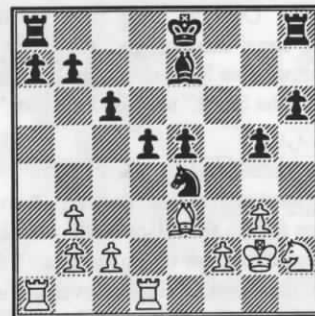
You can't blame White for trying. [Sure you can. —Ed.] After all, if Black takes back with 24...gxh6?? then there is 25.Nf6+ followed by 26.Qh7#. But Black has a little monkey wrench - just waiting - to throw into White's machinery.

24...Bd3! 25.Qc1 Bxe4 26.Rxe4 gxh6 27.Rg4+ Ng6 28.Nh4 Nxe5 29.Re4 Qd8 30.Qe3 Rd3 31.Qe2 Rd1+ 32.Bf1 Nxh4 33.Rxe5 Ng6 34.Re4 Qd2 35.Qb5 Qc2 36.Re2 Qc1 37.Re4 Rd2 38.Re2 Rxe2 39.Qxe2 Qg5 40.Bg2 Kg7 41.f4 Qd8 42.h4 Ne7 43.g4 Qd6 44.Qf1 Nd5 45.f5 Qf4 46.Qe2 Qe3+ 0-1

Johnson,M - Nowak,G
Philador's [C41]
Snowbound Chess Captives Open

Michael has winning chances fairly late in this game, but ends up hanging on for dear life against the Octopus.

1.e4 e5 2.Nf3 d6 3.Bc4 Qe7 4.0-0 Nd7 5.Nc3 c6 6.d3 h6 7.Be3 g6 8.Qd2 f5 9.g3 Ndf6 10.h3? fxe4 11.Nxe4 Bxh3 12.Rfd1 Nxe4 13.dxe4 Be6 14.Bb3 g5 15.Kg2 Nf6 16.Nh2 Nxe4 17.Qb4 Bxb3 18.axb3 d5 19.Qxe7+ Bxe7



At this point Michael had fifteen minutes left to Greg's five.

20.Bxa7 0-0 21.Ng4 Kg7 22.Nxe5 Rf5
23.Nd3 g4? 24.c3?

24.Bd4+, followed by RxR would have been hard to beat.

24...Raf8 25.Be3 Bg5 26.Nf4 Bxf4
27.gxf4 h5 28.Ra7 R8f7 29.f3 Nf6 30.fgx4
Nxxg4

Greg has about twenty seconds left now, and instinct takes over.

31.Bd2 Re7 32.Kf3 Kg6 33.Re1 Rxe1
34.Bxe1 Rf7 35.Bh4 Kf5 36.Bg5 Nf6
37.Ra8 Ne4 38.Rh8?

Now Michael is beginning to feel time pressure too. 38.Bh4 or 38.Rg8 is better.

38...Nxxg5+ 39.fgx5 Kxxg5+ 40.Kg3 Rg7
41.Kh3 Rg6 42.Rh7 Rh6 43.Rxb7 c5
44.Rb5

Here a desperate time scramble ensues, at the end of which Michael is left with only his king on the board. Greg can't get the checkmate in time though; his flag falls first, drawing the game. ½-½

Nowak,G (2390) - Gibbs,P (2460)
Reti [A12]
ICCF World Semifinals

Here's another postal upset from Misoula's resident master.

1.g3 d5 2.Nf3 Nf6 3.c4 c6 4.b3 Bf5
5.Ba3 a5 6.Bg2 Na6 7.0-0 Nb4 8.d3 h6
9.Bb2 e6 10.a3 Na6 11.Nbd2 Bh7



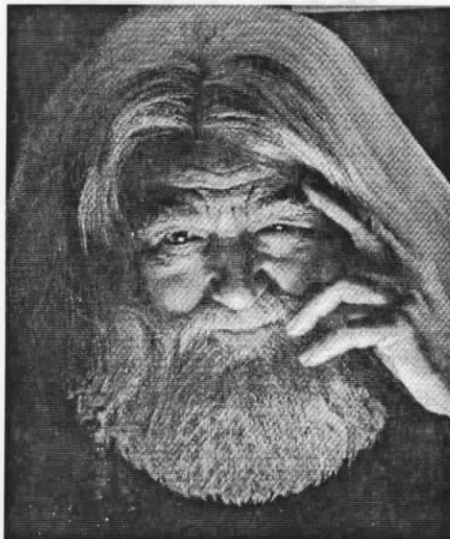
12.Qb1 Be7 13.Bc3 0-0 14.Qb2 b5
15.cxb5 cxb5 16.Ne5 Qb6 17.Bd4 Qb7
18.Ra1 Rfc8 19.Bh3 Bf8 20.Rxc8 Rxc8
21.b4 a4 22.Rc1 Nb8 23.Ndf3 Nbd7
24.Rxc8 Qxc8 25.Qc3



25...Qb8

Perhaps Black was worried about the following sacrificial line if he traded queens.
25...Qxc3 26.Bxc3 Nxe5 27.Bxe5 Ne8
28.Nd4 Bd6 29.Bxd6 Nxd6 30.Nxe6!? fxe6
31.Bxe6+ Kf8 32.Bxd5.

26.Nxd7 Nxd7 27.Qc6 Nf6 28.Ne5 Bd6
29.Ba7! Qxa7 30.Qxd6 g5 31.e3 Qb7
32.Bf1 Kg7 33.Qc6 Qb8 34.d4 Ne4
35.Qxb5 1-0



Greg Nowak, before donning his disguise.

Griffin,D (1522) - Weyland,R (1301)
French Defense [C01]
Crocus Open

This hard-fought game won the best upset prize for Ron Weyland of Spokane.

1.e4 e6 2.Nf3 d5 3.exd5 exd5 4.d4 Nc6
5.c3 Bg4 6.Be2 Qd7 7.0-0 Bd6 8.Qb3 Na5
9.Qb5 Qxb5 10.Bxb5+ c6 11.Be2 0-0-0
12.h3 Bh5 13.g4 Bg6 14.Nh4 Bc2 15.b3
Re8 16.Be3 h6 17.Rc1 Bxb3 18.Nf5



18...Rd8?

Instead, 18...Bf8 allows the rook to stay on the open file, keeping the pin on White's dark-squared bishop. The text move allows 19.axB Nxb3 20.Rxa7 NxR 21.BxN, winning two pieces for the rook. David misses

the follow-up and Ron goes on to win.

19.Bd3 Bc4 20.Nxd6+ Rxd6 21.Bf5+
Kd8 22.Bf4 Rf6 23.Be5 Rxf5 24.gxf5

This exchange is not as bad for Black as it might seem, due to White's wrecked pawn structure.

24...Nf6 25.Bb8 Bd3 26.Nd2 Bxf5
27.Bxa7 Kc7 28.Kh2 Ne4 29.Nxe4 Bxe4
30.Be5 Nc4 31.Re1 Nd2 32.Kg3 Nf3
33.Re3 Ng5 34.Rae1 Ne6 35.Bb4 Ra8
36.a3 b6 37.c4? Nxd4 38.exd5 Nf5+ 39.Kf4
Nxe3 40.Rxe3 Bxd5 41.Re7+ Kd8 42.Re5
Ra7 43.h4 Rd7 44.Bf8 f6 45.Re3 c5 46.Rg3
g5+ 47.hxxg5 hxxg5+ 48.Kf5 Rf7 49.Bd6
Kd7 50.Bb8 Be6+ 51.Kg6 c4 52.Re3 Rf8
53.Ba7 b5 54.Be5 Rf7 55.Bd4 g4 56.Bxf6
Rf8 57.Kg5 Rg8+ 58.Kh4 Rg6 59.Bg5 Rg7
60.Kg3?? Rxxg5 61.f4 Rd5 62.Kh4 Rd3
63.Re5 g3 64.Rxb5 g2 65.Rb1 Rf3 66.Rg1
Rxf4+ 67.Kg3 Rg4+ 68.Kf3 c3 69.Ke3 c2
70.Kd2 Bf5 71.Kc1 Be4 72.a4 Rf4 73.Rxxg2
Bxxg2 74.Kxc2 Rxa4 0-1

Julian,J (1594) - Katzl,R (1901)
Sicilian [B83]
Crocus Open

John Julian snags a pawn in the middle game, but he leaves a juicy hole for Rudi's knight and can only watch as a great game collapses.

1.e4 c5 2.Nf3 e6 3.d4 cxd4 4.Nxd4 Nf6
5.Nc3 d6 6.Be2 Be7 7.0-0 0-0 8.Be3 a6
9.Kh1 b5 10.a3 Bb7 11.f3 Qc7 12.Bd3
Nbd7 13.Qe1 Nc5 14.Qg3 g6 15.Nde2 e5
16.Rad1 Rac8 17.Qf2 Rfd8 18.Ng3 Kh8
19.Bc1 Nxd3 20.Rxd3 Qc4 21.Rfd1 a5?!



22.Qb6 Bc6 23.Qxa5 Rb8 24.b3 Qe6
25.Nce2 Rdc8 26.Qd2 Nd7 27.Bb2 Kg8
28.Qh6 Bf8 29.Qe3 Nc5 30.R3d2 Rb7 31.f4
f6 32.b4

This creates a backward pawn at a3 and locks in the bishop. Probably 32.Bc3 was better.

32...Nd7 33.f5 Qf7 34.fxxg6 hxxg6 35.Nc3
Nb6 36.Ba1?

After 36.Rf2 White can answer 36...Nc4 with 37.Qc1.

36...Nc4 37.Qe2 Nxd2 38.Rxd2 Bd7
39.Nd5 Be6 40.Nc3 Rbc7 41.Qf2? [41.Qf3]

41...Rxc3 42.Bxc3 Rxc3 43.Qb6 Rxa3
44.Qxb5 Ra1+ 0-1

McCourt,C (1455) - Brownlee,K (1760)
Blackmar-Diemer Gambit [D00]
Crocus Open

It's always exciting to see the Blackmar-Diemer Gambit in action. I thought only Motta was gutsy (reckless?) enough to play that around here. It pays off for Chris in a big way in this game. In fact, he presumably would have gotten the best upset prize if he had not been playing as a houseman.

1.d4 d5 2.e4 dxe4 3.Nc3 Nf6 4.f3 exf3
5.Nxf3 c5 6.Be3 cxd4 7.Nxd4 a6 8.Qf3 e5
9.Nf5 Nc6 10.Bc4 Qd7



Black wisely aims to trade off White's best attacking pieces. Interesting now is 11.Nh6!? Nd4 12.Bxd4 Qxd4 13.Nxf7 Qxc4 14.Nxh8 Qg8 15.Qg3.

11.0-0 Qxf5 12.Qxf5 Bxf5 13.Rxf5 Be7
14.Rf2 Rd8 15.g4?! Nxg4 16.Bxf7+ Kd7
17.Bb6 Rhf8?

Keith gets a bit too cute. 17...NxR wins simply.

18.Rd1+ Kc8 19.Be6+ Kb8 20.Rxf8
Rxf8 21.Bxg4 Rf4 22.Be2 Nd4 23.Bxd4
Rxd4 24.Rxd4 Bc5 25.Bd3 Bxd4+ 26.Kf1
h6 27.h4 Kc7 28.Ke2 Kd7 29.Kd2 Ke6
30.h5 Bb6 31.Ne4 Kd5

Here the scoresheets get muddled, but Chris went on to win. 1-0



Frequent youth prize winner Johnny Legan, at the Greater Northwest Team Tourney

Brownlee,K (1760) - Younker,G (1676)
Center-Counter Defense [B01]
Crocus Open

1.e4 d5 2.exd5 Qxd5 3.Nc3 Qa5 4.d4 c6
5.Nf3 Nf6 6.Bd2 e6

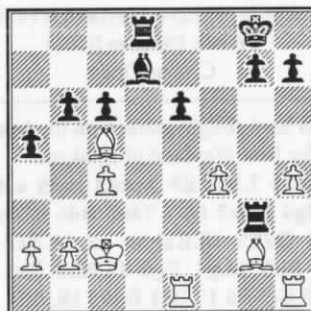


6...Bg4 first is the book line. Although Black gets stuck with a pretty passive setup now, it doesn't seem to hurt him.

7.Ne5 Be7 8.Ne4 Qd8 9.Nxf6+ Bxf6
10.c3 0-0 11.h4 Bxe5 12.dxe5 Qa5 13.f4 f6

Black should waste no more time in getting developed. 13...b6, giving air for the bishop, looks better.

14.exf6 Rxf6 15.Qb3 Nd7 16.c4 Qf5
17.0-0 Ne5 18.Qc2 Qxc2+ 19.Kxc2 b6
20.Re1 Bd7 21.g3 a5 22.Bg2 Rd8 23.Be3
Rg6 24.Bxc5 Rxc3



25.Bh3? [25.Re2] 25...Rxb3?

25...bxb3 26.Bxe6+ Bxb3 27.Rxb3 leaves Black in the driver's seat. His rooks would seize the seventh rank and clean up.

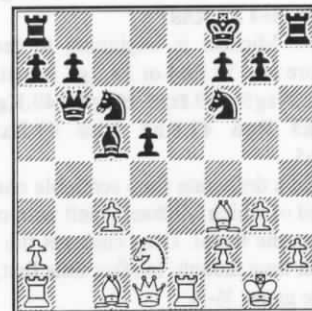
26.Rxb3 e5 27.Bxb6 Bf5+ 28.Kc1 Rb8
29.Rf3 Rxb6 30.Rxe5 g6 31.Rxa5 Kg7
32.Ra7+ Kh6 33.a4

At this point both scoresheets show Black pulling off an illegal move -- 33...Re8!?! It took some detective work and reconstruction of the game, but listed here is what apparently was the move pair omitted on both scoresheets.

33...Rb8 34.a5 Re8 35.Kd2 Re4 36.Kc3
Re2 37.a6 Rc2+ 38.Kb3 Rh2 39.Re7 Bc2+
40.Kc3 Bd1 41.Rfe3 Rc2+ 42.Kb3 Rc1+
43.Ka2 Rxc4 44.a7 Rxf4 45.a8Q Ra4+
46.Qxa4 Bxa4 47.Ra7 Bb5 48.Rae7 1-0

Jensen,M (1904) - Katzl,R (1901)
Trompowski Attack [A45]
Crocus Open

1.d4 Nf6 2.Bg5 e5 3.e3 cxd4 4.exd4
Qb6 5.Bc1 d5 6.Nf3 Nc6 7.c3 Bg4 8.Be2 e6
9.0-0 Bd6 10.Nbd2 h6 11.Ne5 h5 12.Nxg4
hxg4 13.g3 e5 14.Bxg4 exd4 15.Re1+ Kf8
16.Bf3 dxc3 17.bxc3 Bc5



White stands pretty well here. In time Black's unconnected rooks may cause him trouble. White can prepare to double up and protect f2 at the same time. Mike does this, but with the wrong piece -- the queen instead of the rook.

18.Qe2? Re8 19.Qf1 Bxf2+! 20.Kh1
Not 20.QxB because of 20...RxR+.

20...Rxe1 21.Ba3+ Kg8 22.Rxe1 Bxg3
23.Re2 Qc7 24.h3 Ne5 25.Kg2 Ng6
26.Kg1 Qxc3 27.Nb1 Qd4+ 28.Kh1 Nf4
29.Rd2 Qe3 30.Bg2 Ne4 31.Rc2 Nf2+
32.Rxf2 Bxf2 33.Bc1 Qg3 34.Bxf4 Qxf4
35.Bxd5 b6 36.Bg2 Rh5 37.Nc3 Re5
38.Ne4 Rxe4 39.Bxe4 Qxe4+ 40.Kh2 Bc5
41.Qd1 Qf4+ 42.Kh1 Bd6 43.Qe2 Qc1+
44.Kg2 Qc6+ 45.Kg1 Bc5+ 46.Kh2 0-1

Don't forget...

May 22nd-23rd, 1999

**Montana Open
Bozeman, Montana**

See *Upcoming Events*
for details.

Nowak,G (2189) - Jensen,M (1904)
Reti [A13]
Crocus Open

1.g3 d5 2.Nf3 b6 3.c4 e6 4.Bg2 Bb7
5.0-0 Nf6 6.b3 c5 7.cxd5 exd5 8.d4 Nc6
9.Ba3 Be7 10.Nc3 0-0 11.dxc5 bxc5
12.Na4



12...c4 13.Bxe7 Qxe7 14.Nd4 Nxd4
15.Qxd4



15...Qxe2
Because of the pin on the d4 pawn,
15...cxb3 is probably better.

16.bxc4 Qh5 17.Rfe1 Be6 18.Nc3 Rfd8
19.cxd5 Rd7 20.Re5 Qh6 21.h3 Bb7
22.Rae1 g6 23.Re7 Qg7 24.Qa4 Rad8
25.Qa5 Qf8 26.Rxd7 Rxd7 27.Rd1 Kg7
28.Qa4 Qe7 29.Qd4 Kg8 30.Rd3 Qd8
31.Qe5 Ne8 32.h4 Nd6 33.h5 Re7 34.Qf4
Re1+ 35.Kh2 Qe7 36.h6 f5 37.Qd2 Ba6
38.Re3 Rxe3 39.fxe3 Qe5

39...Qg5 instead might give the initiative
to Black, but Mike is running out of thinking
time.

40.Nd1 Bb5 41.Qc2 Qe7 42.a4 Bd7
43.Qc7 a6 44.Nf2 Flag. 1-0

Nowak,G (2189) - Brownlee,K (1760)
Reti [A07]
Crocus Open

1.g3 d5 2.Nf3 Bg4 3.Bg2 Bxf3 4.Bxf3 c6
5.c4 e6 6.Qc2 g6 7.d3 Bg7 8.Nd2 Ne7
9.Rb1 Nd7 10.Bg2 0-0 11.b3 Nf5 12.e3 Qb6
13.Nf3 Ne5 14.0-0 Nxf3+ 15.Bxf3 Qc7
16.cxd5 exd5



17.Bxd5 Rad8 18.Bf3 Rfe8 19.b4 Qd7
20.Rd1 Bh6 21.Qc5 Qe7 22.Qxe7 Rxe7
23.Rb3 Bg7 24.Bg4 Nd6 25.Bd2 f5 26.Be2
Red7 27.d4 Kh8 28.Rc1 Ne4 29.Be1 Nd6

30.a4 Rc8 31.Rbc3 Ne8 32.b5 Rdc7 33.Bf3
cxb5 34.axb5 Rxc3 35.Rxc3 Rxc3 36.Bxc3
Nc7 37.Bxb7 Nxb5 38.Bb4 Nxd4 39.exd4
Bxd4 40.Kf1 Kg7 41.Ke2 Kf6 42.Bd2 Ke5
43.Be3 Bb6 44.f4+ Kf6 45.Bxb6 axb6
46.Bc6 g5 47.Ke3 gxf4+ 48.gxf4 Kg6
49.Bd7 Kf6 50.Kd4 Kg6 51.Ke5 1-0

Hall,R (unr.) - McCourt,D (1660)
French [C00]
Tuesday Rated Quads

New MCA/USCF member Richard Hall
gets a boost for his provisional rating here.

1.e4 e6 2.c4 d5 3.cxd5 exd5 4.exd5 Qxd5
5.Nf3 Be7 6.Nc3 Qa5 7.Be2 Nf6 8.0-0 0-0
9.Qc2 Bg4 10.d4 c6 11.Bd2 Qc7 12.Rfe1
Nbd7 13.Rad1 Rac8 14.Qc1 Rfe8 15.Bf4



17...Qd8 16.Ne5 Bxe2 17.Rxe2 Nb6
18.Qc2 Nfd5 19.Qf5 Bf6 20.Bg3 Nxc3
21.bxc3 Nd5 22.Qd3 g6 23.Rde1 Bg7
24.Qf3 f6 25.Ng4 Rxe2 26.Rxe2 Qf8 27.h3
Re8 28.c4 Rxe2 29.Qxe2

A time scramble followed. At one point
Richard hung his queen but Dan missed it.
When Dan hung his queen a few moves
later, Richard was not so generous. 1-0 ♚

Hey, Editor! Analyze *this!* Another look at Hardy-Carpenter

Alert reader Les Brennan points out what
he takes to be a fuzzy-headed flaw in last
issue's analysis of the Hardy-Carpenter
game. Here is the position, along with his
comments in italics:



*I really got into the game between Hardy
and Carpenter on p.9. In the last diagram,
where you suggest Romie still has a draw
with 50...Kc3, I suggest his goose is cooked
even there. E.g.:*

*50...Kc3 51.h5 Rh1 52.Rxb2! (getting the
Black king even farther away from the queen
larva) Kxb2 53.h6 and now the end can
take two directions, e.g. 53...Rc1 54.g4 Rc6+
55.Kh5 Rc5+ 56.g5 Rc7 57.f4 Kc3 58.g6
and White will win.*

*The other line I see is 53...Kc2 54.h7
Kd2 55.Kg7 Ke2 56.h8=Q Rxh8 57.Kxh8
Kf3 58.Kh7 and the king comes back to
escort his winning pawn to the eighth rank.
White wins.*

Now for some analysis of this analysis.
51...Rh1 is the only response shown for
Black in the original article, and it's the only
one Les considers here. But another possible
move appears to save a crucial tempo, and

with that tempo, the game.

50...Kc3 51.h5 Ra1!

Now we have the following possibilities:

A1. 52.Rxb2 KxR 53.h6 Ra6+ 54.Ka5
Kc3 55.h7 Ra5+ 56.Kh4 Ra8 57.Kh5 Kd4
58.g4 Ke5 59.g5 Kf5 60.g6 Ra1 61.Kh6
Rh1+ 62.Kg7 Rh2 63.Kf7 Rh6, draw.

In the above line White can try 53.g4
instead, but this also ends in a draw:

A2. 53.g4 Ra6+ 54.Kh7 Kc3 55.h6 Kd4
56.g5 Ra7+ 57.Kg6 Ra6+ 58.Kh5 Ke4 59.h7
Ra1 60.Kh6 Rh1+ 61.Kg7 Kf5 62.f4 Kxf4
63.g6 Kg5, draw

B. 52.h6 b1Q+ 53.Rxb1 Rxb1 54.g4
Rb6+ 55.Kh5 Kd3 56.h7 Rb1 57.Kg6 Rb6+
58.Kh5, draw.

Is this fuzzy-headed thinking, or not? To
find the answer, the editor gladly invites
analysis of this analysis of the analysis of the
original analysis.

Tournament Tables

Crocus Open (4/17,18/99)

#	Name	Rtng	Rd 1	Rd 2	Rd 3	Rd 4	Rd 5	Tot
1	Gregory Nowak	2189	W12	W9	W6	D2	W4	4.5
2	Rudolf G. Katzl	1901	W13	W3	H—	D1	W6	4.0
3	Curt D. Collyer	1670	W15	L2	W8	W9	W7	4.0
4	Keith Brownlee	1760	L14	W10	W9	W5	L1	3.0
5	Gary Younker	1676	W16	D14	H—	L4	W11	3.0
6	J. Michael Jensen	1877	W10	W8	L1	D7	L2	2.5
7	Sherwood Moore	1703	L8	W15	W13	D6	L3	2.5
8	Jeremy Younker	1485	W7	L6	L3	D13	W15	2.5
9	Daniel J. McCourt	1624	W11	L1	L4	L3	W13	2.0
10	David Griffin	1522	L6	L4	W15	L11	W16	2.0
11	Ronald Weyland	1301	L9	L12	W16	W10	L5	2.0
12	William McBroom	1601	L1	W11	H—	U—	U—	1.5
13	John C. Julian	1594	L2	W16	L7	D8	L9	1.5
14	Chris D. McCourt	1455	W4	D5	U—	U—	U—	1.5
15	Phillip Weyland	1337	L3	L7	L10	W16	L8	1.0
16	Michael J. Johnson	unr.	L5	L13	L11	L15	L10	0.0

Bookworm - Open Section (3/27/99)

#	Name	Q-rtng	1	2	3	4	5	6	Tot
1	Greg Nowak	2178	X	1	1	1	1	1	5.0
2	Thad Suits	1934	0	X	1	½	1	1	3.5
3	J. Michael Jensen	1958	0	0	X	½	1	1	2.5
4	Romie Carpenter	1817	0	½	½	X	1	0	2.0
5	William McBroom	1767	0	0	0	0	X	1	1.0
6	Daniel McCourt	1756	0	0	0	1	0	X	1.0

Bookworm - Reserve Section (3/27/99)

#	Name	Q-rtng	1	2	3	4	5	6	Tot
1	Richard Hall	unr.	X	½	1	1	1	½	4.0
2	Bob Leader	1523	½	X	0	1	1	1	3.5
3	Eric Gilbertsen	1605	0	1	X	0	1	1	3.0
4	Chris McCourt	1442	0	0	1	X	0	½	1.5
5	Tim Sweeney	unr.	0	0	0	1	X	½	1.5
6	Kenny Shultz	unr.	½	0	0	½	½	X	1.5

Greater Northwest Team Tourney (4/26/99)

#	Team	1	2	3	4	5	6	Match pnts	Game pnts
1	82nd Armored Division	X	½	1	1	1	1	4½	15½
2	Clandestine Threats	½	X	½	1	1	1	4	14
3	Patriots of the Impossible	0	½	X	½	1	1	3	11
4	3 Leaners and a Ringer	0	0	½	X	1	1	2½	10½
5	Genesis of Genius	0	0	0	0	X	½	½	8
6	Phantom Horses	0	0	0	0	½	X	½	5

Bookworm - Gluttons for Punishment Section (3/27/99)

#	Name	Q-rtng	1	2	3	4	5	6	Tot
1	Greg Nowak	2178	X	1	1	1	1	1	5.0
2	Romie Carpenter	1817	0	X	1	1	½	1	3.5
3	Thad Suits	1934	0	0	X	1	1	1	3.0
4	Daniel McCourt	1756	0	0	0	X	1	1	2.0
5	William McBroom	1767	0	½	0	0	X	1	1.5
6	Bob Leader	1523	0	0	0	0	0	X	0.0

UCCC 3rd Winter Open

#	Name	Rtng	Rd 1	Rd 2	Rd 3	Tot
1	Sherwood Moore	1715	W4	W3	D2	2.5
2	Romie Carpenter	1832	D6	W5	D1	2.0
3	Daniel McCourt	1665	W5	L1	H—	1.5
4	Don Gisselbeck	1364	L1	W6	U—	1.0
5	Sam Hardy	1307	L3	L2	W6	1.0
6	William McBroom	1597	D2	L4	L5	0.5

Corrections to the last issue

Contrary to the listing for the Valentine Open, Bill Furdell did not draw against Jeremy Younker in round one. The draw came against Keith Brownlee. Similarly, Bill did not lose in round two to player number 57, which would have been an amazing accomplishment in a ten-player event. That should have been just a "5".

The Polgar Corner

The following position is taken from the encyclopaedia *Chess* by László Polgár. How quickly can you find this mate in two?
The answer is on the back page.



White to move and mate in 2

Thad Suits
2015 4th Ave. N.
Great Falls, MT 59401



En passant

Garwood Moore visited me and gave me recently received a gift from Lynn Pe... with interesting facts... that Lynn... for... April... with a... and a...
The... of... is... by...
I... the... of...
I... the... of...
I... the... of...

Tournament Rule Tip

An offer of a draw should be made by a player only after making a move and punching the clock (Handbook rule 14B1.) If the offer is improperly made before the move, it is still a valid offer, and like all draw offers, it cannot be retracted even if the player making the offer discovers a great move afterwards.

A draw offer stands until the other player does one of three things: 1) accepts the draw 2) loses on time while considering the offer 3) rejects the offer. Typical ways of rejecting a draw offer are moving a piece, shaking the head, or saying "In your dreams!"

Answer to "What's the Cruncher?"

From Fabian-McBroom, 1998 Turkey Open. Steve Fabian found the following line to pull even: 1.Rxe6! fxe6 2.Qh8+ Ke7 (2...Kf7, inviting a draw is possible) 3.Qg7+ Kd6 4.Rd1+ Qd5 5.Rxd5+ (5.Bb3 first is even better) cxd5 6.Qxb7 and, after a tough fight, White won.

Answer to "The Polgar Corner" - 1.Qxh7+