

# MONTANA

## CHESS NEWS

Volume 25, Issue 1 — March, 1999

*In this issue:*

### The MCA Thanks Sherwood Moore

#### Back-to-Back Nowak:

*Octopus Unstoppable at Freeze-Out and January Thaw*

#### Jensen Wins Valentine Open

#### Hildenstab Repeats as Postal Champion

#### An MCA Player Profile: *Melvin P. Drake*

#### Board Votes on Bylaw Changes



### What's in a name?

**G**reg "the Octopus" Nowak is probably on to something with that nickname of his. It brings to mind a player capable of strangling you, or one who could easily snatch up pieces and pawns with all those arms. But who says you have to be a master to get a moniker? Here are some possible animal nicknames for a few other MCA players.

#### **Jim "the Cobra" Skovron**

Most dangerous when cornered or wounded.

#### **Paul "the Pitbull" Motta**

A reputation for aggressive and deadly behavior: That's Paul all right.

#### **Alex "the Packrat" Dawson**

He carries off all the gambit pawns you offer and jealously guards his own.

#### **Doug "the Cornhusker" Hansen**

As long as Nebraska wins, Doug couldn't care less about his own position.

#### **David "the Termite" Duke**

He silently gnaws away at your position until it crumbles to dust.

#### **Zygmund "the Killdeer" Mayer**

Like the killdeer, he feigns a broken wing (1.b4!) to frustrate would-be predators.

#### **Thad "the Shark" Suits**

Remember, a Shark can eat an Octopus, but not the other way around.

Then there are some others which just *sounded* good:

#### **Leslie "the Piranha" Brennan**

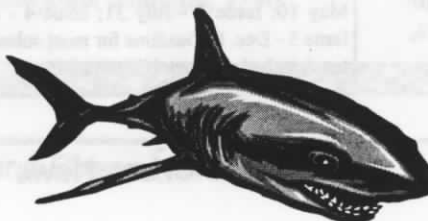
#### **Mike "the Hawk" Jensen**

#### **Sherwood "the Bull Moose" Moore**

#### **Melvin "the Drake" Drake**

This could be just the beginning. I encourage everyone to adopt a nickname, and here are some guidelines to help you select one that's right for you.

- Find an animal that matches your playing style. For example, if you are a defensive player, choose an animal with that quality, like the porcupine or the turtle.
- Keep it short. *Bill "the Magnificent Frigate Bird" Furdell*, for instance, would be a bad choice.
- Lastly, you should avoid certain animals at all costs. Don't forget that the whole idea is to strike fear into your opponent's heart, so monikers like *Nick "the Guinea Pig" Douglas*, and *Bill "the Minnow" Lynch* are off limits.

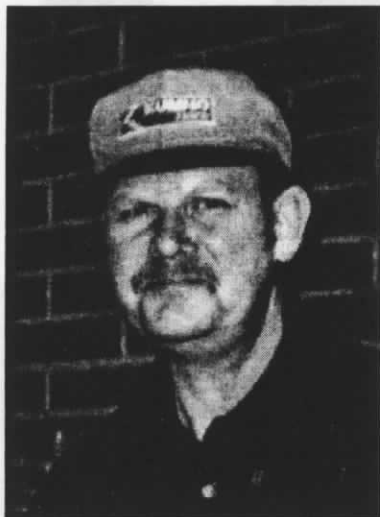


## Sherwood Moore Honored

In recognition of his many contributions to chess in Montana over the years, Missoula's Sherwood Moore has received a special MCA "Player of the Year" award for 1998. Doug Hansen, MCA President, announced the award at the January Thaw Tournament in Helena, where he also presented a plaque to Sherwood amidst warm applause from the participants.

As a further tribute, this issue of the Newsletter includes quite a few of his recent games (but sorry, Sherwood, not just the wins.)

Sherwood Moore's contributions to the Montana chess scene are many and varied. He has been one of the most active tournament directors in the state for years, forgoing a chance to play, even though he would much rather be in the fight himself. He has served on the MCA Board several times, including most recently as a patient and thorough Secretary-Treasurer. His easy-going manner and affable personality and have long made consensus more easy to achieve within the MCA. Where consensus has not been possible, his diplomatic style has ensured that opposing parties felt heard and respected.



More than anything else, though, Sherwood has always been there when the organization needed him, lending a hand in those countless small ways that mostly go unnoticed. For your selflessness in all this, thanks, Sherwood, from the MCA. ♣

## Nowak wins Helena's January Thaw and Five Valley Freeze-Out

### Helena's January Thaw

Tournament report by Alex Dawson

With plenty of hot coffee and donuts, warm friendly smiles, and a thick blanket of new snow, Helena's Grand Prix tournament got off to a cozy and casual start. Having an extra six players more than we calculated, organizer Mel Drake was able to bump up the prize fund and make a donation to the Lewis and Clark library in the form of a few good-quality extension cords. (That's what they wanted.)

The top two "winners" of the competition, splitting \$75, were James Borchardt and Alex Dawson, each with 4 points. Greg Nowak, with 4.5 points, took home \$100 for his "exhibition" fee. (The word "compete" isn't in his dictionary. It's just "another day, another dollar" for him.)

There was a three-way tie for Best Under 1700. Brian Bailey, Doug Hansen and Dan McCourt each garnered a hard earned \$3.33. The same amount went to Hal Amundson, Andrea Bailey and Nathanael Willett for Best Under 1400, with Andrea collecting an additional \$25 for the Biggest Upset prize. (Don't forget to report these earnings to the IRS!)

More important than the fun and games was the recognition of Sherwood Moore as Player of the Year. Thanks for everything, Sherwood. Mention must also be

made of his wife, Juanita, for her efforts and enthusiasm. (It was even her laptop computer we used to make the pairings.)

Lastly, thanks to Brian Bailey of Bozeman for his excellent directing. Sorry there weren't any headaches or disputes to resolve; we'll see what we can do for you next time!

### Five Valley Freeze-Out

Tournament report by Dan McCourt

The Freeze-Out was played in a two section format this year. The twelve-player field made for an easy setup with two five-round round-robins.

Greg Nowak played strong and steady to lead the Open while Mike Jensen pulled down second place losing ground to Nowak only on a last-round bye. Bill McBroom finished with 3.5 points for the Best under 1800 award.

Eric Gilbertsen won his first four games to lock up first in the Reserve. Two youngsters, Scott Young and Johnny Legan, surprised opponents throughout the tournament with their alert play and tactical awareness. Richard Stuckey filled the part of Iron Man with five games in the Reserve and one as houseman in the Open.

Thanks to all who participated, especially those who traveled from out of the area. Lots of chess is scheduled for Missoula these next months. Check your calendar! ♣

### MCA Board Members (1998-1999)

Doug Hansen - President (761-4517)  
Michael Jensen - Vice President (721-0131)  
Thad Suits - Secretary/Treasurer (453-6160)  
Patrick McDonald - Eastern V.P. (652-7753)  
Daniel McCourt - Western V.P. (721-0254)

*Let them know about your ideas, complaints, suggestions, and praise.*

Montana Chess News is published by the Montana Chess Association, an affiliate of the U. S. Chess Federation. Subscription and membership in the MCA is \$9/yr regular, \$5/yr junior.

Editor - Thad Suits, 2015 4th Ave N.

Great Falls, MT 59401

(406) 453-6160 E-mail: suits@initco.net

All submissions are welcome, including photos. Articles by E-mail or on a PC-formatted diskette are especially appreciated. Please use either text, MS Works, Publisher, Lotus or .PGN format.

### Publishing Schedule - Five issues:

Issue 1 - Mar. 1; Issue 2 (Special for the Open) - May 10; Issue 3 - July 31; Issue 4 - Sept. 25; Issue 5 - Dec. 8. Deadline for most submissions is ten days before the publication date.

Did you find (or miss) a subtly sharp move in one of your games? If so, send it to the editor and ask

## What's the Cruncher?

White can crunch in this position, but how? The answer is on the back page.



White to move and crunch.

## Hildenstab wins Postal Championship

Duane Hildenstab won the Montana Postal Championship for the second consecutive year, beating out Ron Erickson and Sherwood Moore. Duane went 2.5-1.5 in the three-man double round robin for a clear first place and the trophy, which was presented to him in Helena at the January Thaw.

This year Sherwood blundered a piece on move nine of his first game against Duane and never quite recovered, as two draws was the best he could muster against Ron. Undaunted, Sherwood now is engaged in 28 games of postal chess, and has qualified for the NOST Championship. Good luck to you, Sherwood!

## Jensen stops Nowak to win Valentine Open *Results from UCCC and other recent tournaments*

### *Valentine Open*

Late in his game against Greg Nowak, Mike Jensen offered a draw. Now he's glad Greg rejected the offer. A few moves later the tide quickly turned in Mike's favor, and he ended up winning both the game and the tournament.

The defeat, coming in round three of the Valentine Open, held in Missoula on the weekend of February 20th, marked the end of a hot streak for the Octopus, who had cleaned up in both the January Thaw and the Five Valley Freezeout the previous month.

Rounding out the top finishers were Gary Younker (it's good to see Gary back in tournament action) and his son,

Jeremy, who nicked Mike for a draw.

Look for these games and many more in the games section of this issue.

### *UCCC 3rd Fall Open*

Sherwood Moore beat Romie Carpenter in the final round of the UCCC 3rd Fall Open in Missoula to sweep the tournament with a score of 3-0.

In that same third and final round, Donald Gisselbeck temporarily took over the lead in the upset derby with a 258 point upset win over Daniel McCourt. That gave Donald a final score of 2-1, leaving him in a tie for second-third place with Romie.

*(See Tournaments on page 11)*

---

## Board of Directors votes on bylaw changes - Approves some, tables others

In keeping with its duties under the MCA Constitution, the Board of Directors recently considered some changes to the bylaws proposed by MCA Secretary-Treasurer Thad Suits and by Michael Long. Several of these changes were approved, but the Board voted to table others until the Annual Business Meeting at the Montana State Open in May.

Among the proposals which the Board approved are the following:

- The inclusion of an award category to an individual or group that merit special recognition.
- The institution of a *Triple Header Championship* to determine the state champion at faster time controls: Game/30, Game/15, and Game/5. The exact wording of this new bylaw is reproduced in the shaded box below.
- The deletion of the High School Championship award, not given for many years.
- A change in the way provisional ratings are calculated for unrated players. This is used to figure an average rating for Grand Prix Tournaments, and will take effect beginning next season.

Two other proposals from the Secretary were tabled until the Annual Meeting. They concerned changing the tiebreak system for admission to the State Closed Champi-

onship, and making the Grand Slam Award easier to earn.

Similarly, the Board tabled until the Annual Meeting Michael Long's proposed changes to the Grand Prix system and to the constitution. (See the previous issue). Both proposals failed to gain any support from Board members themselves. The Board also felt that these issues were not sufficiently pressing to merit a special vote by mail.

Finally, the Board has been forced to consider faster time controls for the State Open due to restricted hours of availability at the tournament site. After kicking several ideas around (including one idea to mix different time controls), the Board voted to go with Game/2 hours for the whole event. Although most players will agree that a slower pace is preferable for the Open, game/2 should still be slow enough for some serious chess.

If a member disapproves of any of the changes approved by the Board, that member should write the Secretary to request inclusion of the topic in the Annual Meeting's agenda for its reconsideration.

Look for the complete MCA Bylaws and Constitution in the next Newsletter, along with the agenda for the Annual Business Meeting.

### ***Addition to the Bylaws — Triple Header Championship***

The MCA shall sponsor an open "three-in-one" tournament called the *Triple Header Championship* in order to determine the State Champion at faster time controls. The three championship sub-tournaments covered by the Triple Header shall be: The State Action Championship (Game/30), the State Quick Championship (Game/15), and the State Speed Championship (Game/5). The Triple Header Championship shall be an MCA sponsored event. The site, date and other details for a given year's Triple Header shall be established by the Board of Directors and announced in the MCA Newsletter ahead of time. Non-resident MCA members may participate in any of the three categories of the Triple Header, but the championship titles of each shall be awarded to the top resident finisher. Tied players in any of the categories shall play in an immediate blitz playoff in order to determine a unique champion for that category. Colors for such a playoff shall be determined by lot.

# MCA player profile: Melvin P. Drake

Mel Drake has been around Montana all his life, but it is only in the last four years that he has been busy in Montana chess. In that short time his recruiting skills have helped turn Helena into one of the most active chess towns in the state.

Mel was born sixty years ago in Wibaux, Montana, just a stone's throw from the North Dakota border. Now retired, he worked for the federal government for 32 years, starting out as a surveyor and high-scaler at the Bureau of Reclamation. His task in those days was to clamber up and down canyon walls on cables, sometimes as much as 500 feet off the ground, setting survey markers for dam construction.

Later he went into the operations side of things, working as a hydroelectric power plant operator and a power area dispatcher for various outfits in and out of government.

The Helena Chess Club meets about twice a month at the Lewis & Clark Library, when that space is available to them. As the contact man for the club, Mel keeps a list of up to thirty interested players and calls them up when a meeting has been set. It is a lot of work, but Mel thinks that the increased interest in the game in Helena has been worth it.

Mel doesn't shrink from a challenge, and one of the things he likes best about chess is that it is a challenge that never ends. This attitude could prove to be a big help to him soon, since he has volunteered to instruct chess for the enrichment program in Helena's middle schools. Mel could well find that teaching middle school is itself a challenge that ranks up there with high-scaling.

He and his wife, Joyce, have been together now for 38 years. They have a daughter and a son, and five grandchildren, ranging in age from 7 to 14.

The featured game for this profile is from the 1995 Montana Open. Even though Mel was comfortable with the basics of chess, having learned the moves as a twenty-year old, this was his very first tournament. The victory (also his first rated win) is all the more impressive since it came against a seasoned and savvy player, and since Mel had never before played with a clock or had to keep a scoresheet.



*"You know what you're doing and you play it safe."*

Mel Drake's common sense survival tip for both high-scalers and chess players.

Melvin Drake - Sherwood Moore  
French Defense - Advance [C02]  
Montana Open, Bozeman, 1995

1.e4 e6 2.d4 d5 3.e5 c5 4.dxc5 Bxc5  
5.Nf3  
ECO gives 5.Qg4 Ne7 6.Qxg7 as unclear.  
5...Qb6 6.Qd2 Nc6 7.c3 Nge7!?



This looks like a blunder, allowing White to trap the bishop with 8.b4. However, Black would get two pawns and good counterplay for the piece. Mel does not bite.

8.Bd3 a5 9.0-0 Ng6 10.Qe1

This blocks in the rook which will be needed to defend the pawn. 10.Re1 or 10.Qe2 is better.

10...Qc7 11.Bb5 0-0 12.Nbd2 Nxe5 13.Nxe5 Nxe5 14.Nb3 Bd6 15.Qe3 b6 16.Qh3 Ba6 17.Nd4 Ng6 18.Re1 e5 19.Bc6? exd4 20.Bxa8 Rxa8 21.Bd2 d3 22.g3 Ne5 23.Qh5 g6 24.Qh6?

Viewed objectively, this is a blunder, but who can blame Mel at this stage for hoping for an easy mate in the corner? Especially since an easy mate is exactly what he gets.

24...Nf3+ 25.Kg2 Nxe1+ 26.Rxe1 Bf8 27.Qg5 Qd7 28.Qf6 Rb8 29.Bf4!

With this attack on the rook, Mel pulls off an old boxer's trick: He feints left, then punches right.

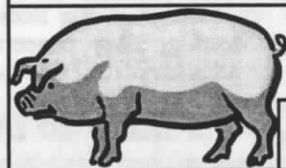


29...Rb7??

Instead 29...Bg7 would remove the threat. Maybe Sherwood got overconfident, maybe he was hurrying to make time control; whatever the reason, he pays for this carelessness and goes down for the count. It's a mistake he is not likely to make again soon — at least not against Melvin Drake.

30.Be5 1-0 ♖

*To sac...*



*...or not to sac?*



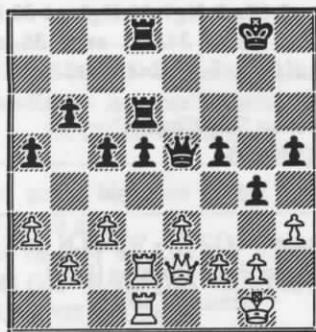
# Recent Games

Note: Both Alex Dawson and Dan McCourt have done some great work for this issue by selecting and annotating games from recent tournaments. Unless otherwise noted, all comments for the games from the January Thaw are by Alex, and those for the Freeze-Out are by Dan. Any fuzzy-headed analysis in these games is strictly their responsibility. The editor accepts full responsibility for all other fuzzy-headed analysis.

## Games from the January Thaw Notes by Alex Dawson

McCourt,D (1660) - Borchardt,J (1764)  
London System [A48]  
January Thaw

1.d4 Nf6 2.Nf3 g6 3.Bf4 Bg7 4.e3 0-0  
5.Bc4? d5 6.Be2 c5 7.c3 b6 8.h3 Nc6 9.0-0  
Bb7 10.Nbd2 Nd7 11.Qc2 e5 12.dxe5  
Ndx5 13.Nxe5 Nxe5 14.Nf3 Qe7 15.Nxe5  
Bxe5 16.Bxe5 Qxe5 17.Bf3 Rad8 18.Rad1  
Ba6 19.Rfe1 Bc4 20.a3 f5 21.Qa4 a5  
22.Qc2 Rd6 23.Be2 Bxe2 24.Rxe2 Rfd8  
25.Red2 g5 26.Qd3 h5 27.Qe2 g4



28.f4 Qe4 29.Qd3 Qe6 30.Re1 Qe4  
31.hxg4 hxg4 32.Qxe4?

32.Red1 would hold things together. Black gets the d and h-files, and with good technique, gets the win also.

32...dxe4 33.Rde2 Kf7 34.Kf2 Rh8  
35.Rc2 Rd3 36.Ree2 Rhd8 37.Rc1 Rd1  
38.Rcc2 R8d3 39.g3 c4 40.Kg2 Ke6 41.Kf2  
Kd5 42.Kg2 Ke5 43.Kf2 Kb5 44.Kg2 Ka4  
45.Kf2 Kb3 46.Kg2 Rb1 47.Kf2 Rdd1!

This trades off one rook and wins the b-pawn, or even mate with Black's rooks on h2 and h3.

48.Kg2 Ra1!?

Black misses mate in the corner beginning with 48...Rg1+.

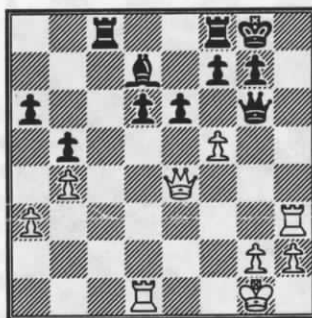
49.Red2 Rac1 50.Rxd1 Rxc2+ 51.Kf1  
Rxb2 52.Rd5 Kxc3 53.Rxf5 Kd3 0-1

Hansen,D (1685) - Dawson,A (1995)  
Smith-Morra Gambit [B21]  
January Thaw

1.e4 c5 2.d4 cxd4 3.c3 dxc3 4.Nxc3 Nc6  
5.Nf3 d6 6.Bc4 e6 7.0-0 Be7 8.Qe2 a6  
9.Be3

Preventing Black from playing the Chicago Defense. (See last issue.) Also possible is 9.a4.

9...Nf6 10.Rfd1 Bd7 11.a3 Rc8 12.b4 b5  
13.Bd3 Ng4 14.Rac1 Nxe3 15.Qxe3 0-0  
16.Rc2 Bf6 17.e5?! Nxe5 18.Nxe5 Bxe5  
19.f4 Bxc3 20.Bxh7+ Kxh7 21.Rxc3 Qf6  
22.Qe4+ Qg6 23.Rh3+ Kg8 24.f5



24...Bc6!

[Alex gives this an exclaim, not so much because it's a great move, but because it simplifies to a won endgame. 24...Qxf5 is probably "better." — Editor]

25.Qxc6 Rxc6 26.fxg6 fxg6 27.Re3 Rf6  
28.h4 Kf7 29.Rf3 Rxf3 30.gxf3 Kf6 31.Rd3  
Kf5 32.Kf2 d5 33.Kg3 Rc4 34.Re3 e5  
35.Rd3 d4 0-1

White cannot stop ...Rc3 and ...e4.

Willett,N (920) - Ames,J (unr.)  
Queen Pawn Opening [A41]  
January Thaw

Young Nathanael of Great Falls seems to know the most important tenet in the game of chess: Checkmate your opponent's king!

1.d4 d6 2.Bf4 Nf6 3.Nd2 Nc6 4.e3 Bg4  
5.Be2 Bxe2 6.Qxe2 e5 7.Bg5 h6 8.Bxf6  
gxf6 9.c3 d5 10.Ng3 e4 11.Nh4 f5?  
12.Nxf5 Qd7 13.Qg4 0-0-0 14.Nb3 Ne7  
15.Nc5? Qe8??

Okay is 15...Qxf5.



16.Nxe7+?!

White wins the queen with 16.Nd6+.

16...Kb8 17.Nf5 Bxc5 18.dxc5 h5  
19.Qe2 Qe5 20.Nd4 Qg5 21.g3 h4 22.Rg1  
hxg3 23.hxg3 b6? 24.c6! Rh2 25.0-0?! a6  
26.Qxa6 Rd6 27.Qb7# 1-0

Borchardt,J (1764) - Nowak,G (2200)  
Sicilian [B28]  
January Thaw

This game was the only tarnish to Greg's terrific performance.

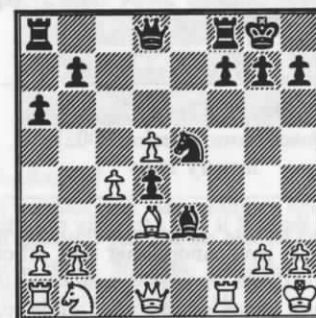
1.e4 c5 2.Nf3 a6 3.d4?!

This is bad according to MCO-13. 3...cxd4 4.Nxd4 Nf6 5.Nc3 e5! 6.Nf3 Bb4 and Black is active. Better is 3. c4! establishing a Maroczy Bind first.

3...cxd4 4.Nxd4 e5!? 5.Nf5?! d5 6.Ne3  
d4 7.Nd5 Nf6 8.Bg5 Be7 9.Bxf6 Bxf6  
10.Bd3 Bg6 11.c4 0-0 12.0-0 Nd7 13.f4  
Bxd5 14.exd5 exf4 15.Rxf4 Bg5 16.Rf1  
Be3+ 17.Kh1

Now Black should play 17...Qh4 maintaining a small plus.

17...Ne5?



18.Bxh7+ Kxh7

Risky for Black is 18...Kh8 19.Qh5 Qg5  
20.Rf5 Qxh5 21.Rxh5 etc.

19.Qh5+ Kg8 20.Qxe5 Qb6 21.b3 Qb4  
22.Qf5 b5 23.Qd3 bxc4 24.bxc4 Rac8  
25.Na3 Qc3 26.Rad1 Qxd3

Here Greg offers a draw. Jim must've been thinking, "I'm up a full pawn, ...but Nowak is still Nowak, ... hmmm ...okay." 1/2-1/2

Nowak,G (2200) - Dawson,A (1993)  
English [A36]  
January Thaw

1.g3 c5 2.c4 g6 3.Bg2 Nc6 4.Nc3 Bg7  
5.a3 b6 6.d3 Bb7 7.Rb1 d6 8.Nh3 Qd7  
9.Nf4 Nf6 10.Bd2 e6 11.h4!? Ne7 12.Bxb7  
Qxb7 13.Qa4+ Nd7 14.0-0 0-0 15.b4 Nf6  
16.e4 Nd7 17.Nb5 Qc6 18.Nc3 Ne5 19.f3?



At the time, neither player saw that Black can win this pawn with 19... Nxf3+! 20.Rxf3 Bxc3 21.Qxc6 Bd4+ and ...Nxc6, but Nowak knows his opponent has little time to find these gems, and is playing good, "practical chess."

19...Qxa4 20.Nxa4 N7c6 21.Be3 Rad8 22.Kg2 Rd7 23.b5 Nd8?

Much better is 23...Ne7 to force ...d5 later.

24.Rbd1 f5 25.exf5 exf5 26.Nd5 Ne6 27.Nac3 Rdf7 28.Ne2 Nc7 29.Nxc7 Rxc7 30.Nf4 Re7 31.Nd5! Ref7 32.Bf4 h6 33.a4 Kh7 34.Bxe5!?

Not a great move, but Black's flag is hanging.

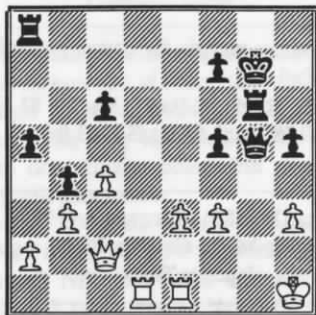
34...dxe5 35.h5 g5 36.g4 fxe4 37.fxe4 Rxf1 38.Rxf1 Time. 1-0

Freddie Jay (1230) - Bailey,A (772)  
Queen Pawn Opening [D02]  
January Thaw

We all thought it was a travesty of justice when USCF gave Andrea her first official rating of 772. But what do you do when life hands you a bunch of lemons?.....right, you make lemonade, or rather you play for the Biggest Upset prize and win.

1.d4 d5 2.Nf3 Nc6 3.e3 Bf5 4.Nbd2 g6 5.c3 Bg7 6.Be2 Nf6 7.h3 0-0 8.Nh4 Bd7 9.0-0 e5! 10.dxe5 Nxe5 11.Re1 Re8 12.Nhf3 Nxf3+ 13.Bxf3 c6 14.b3 Ne4 15.Bxe4 dxe4 16.Bb2 h5!? 17.Qc2 Bf5

18.Rad1 Qg5 19.Kh1 a5 20.Nc4 Re6 21.Nd6 b5 22.c4 b4 23.Nxf5 gxf5 24.Bxg7 Kxg7 25.f4? exf3 26.gxf3 Rg6



27.f4?  
White may hold a slight plus with 27.Rg1 or Qh2.  
27...Qg3 28.Qh2  
Too late now.  
28...Qf3+ 0-1  
Nice work, Andrea. [Editor's note: Andrea's rating was provisional, so this upset will not count for this year's Upset Derby.]

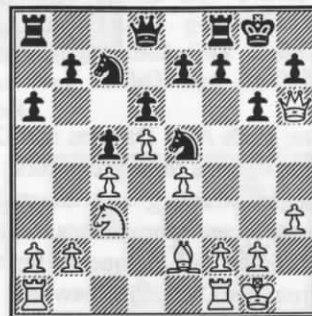


Doug Hansen  
Tied for first in U1700 category

Bailey,B (1517) - Hansen,D (1682)  
King's Indian Defense [E90]  
January Thaw

In WWI the German aces had to shoot down twenty British planes to earn a Blue Max. And none of them achieved that honor without getting their own aircraft shot up over and over again. But it was their determination that made them victorious. Hansen has this determination.

1.d4 g6 2.c4 Bg7 3.e4 c5 4.d5 d6 5.Nc3 Nf6 6.Nf3 0-0 7.Bd3 Bg4 8.0-0 Ne8 9.h3 Bxf3 10.Qxf3 Nd7 11.Bf4 Nc7 12.Qe3 a6 13.Bh6 Bxh6 14.Qxh6 Ne5 15.Be2



15...Qd7? 16.f4 Nxc4 17.Bxc4 b5 18.Bd3 c4 19.Bc2 b4 20.Ne2 Nb5 21.f5 Qa7+ 22.Kh1 Nd4



23.fxe6?  
White has a strong attack with 23.Rf4 Nxe2 24. Rh4 Ng3+ 25.Kh2 Nh5 26.e5! Qf2 27.Rxh5 gxh5 28.f6 and wins.  
23...fxg6 24.Qd2 Nxe2 25.Qxe2 Qd4 26.b3 Rxf1+ 27.Rxf1 c3 28.Qd3 Qxd3!? 29.Bxd3 a5 30.g3 Kg7 31.Kg2 a4 32.Bc4 Rc8 33.Rf2 Rxc4! 34.Rc2 axb3 35.axb3 Rxe4 36.Kf3 Re5 37.Re2 Rxe2 38.Kxe2 Kf6

Here comes "Big Charlie!"  
39.Kd3 Ke5 0-1

Amundson,H (1273) - Willett,N (920)  
Queen Pawn Opening [D03]  
January Thaw

Hal seems to take a "casual" approach to playing chess, but he gets good results.

1.d4 d5 2.Nc3 e6 3.Nf3 Nf6 4.Bg5 Be7 5.e3 Nbd7 6.Bd3 0-0 7.0-0 Bb4 8.Ne5 Bxc3 9.bxc3 b6 10.Bxh7+? Kxh7 11.f4 c5 12.Rf3 Kg8 13.e4?!

White should forge ahead with his king-side attack.

13...dxc4 14.Nxc4 cxd4 15.Qxd4 Bb7 16.Rh3 Rc8 17.f5 Bd5??

Black's best is 17.Be4 with a nice edge.

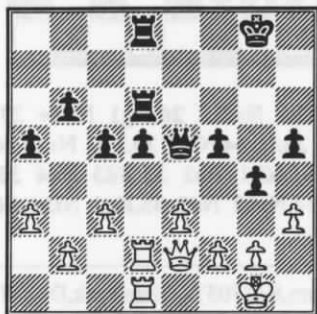
18.Qh4! Rxc4

Nothing can save Black. If 18...Nh5 19.QxN f6 20.Nd6! and White still mates.

19.Qh8# 1-0

McCourt,D (1660) - Borchardt,J (1764)  
London System [A48]  
January Thaw

1.d4 Nf6 2.Nf3 g6 3.Bf4 Bg7 4.e3 0-0  
5.Bc4?! d5 6.Be2 c5 7.c3 b6 8.h3 Nc6 9.0-0  
Bb7 10.Nbd2 Nd7 11.Qc2 e5 12.dxe5  
Ndx5 13.Nxe5 Nxe5 14.Nf3 Qe7 15.Nxe5  
Bxe5 16.Bxe5 Qxe5 17.Bf3 Rad8 18.Rad1  
Ba6 19.Rfe1 Bc4 20.a3 f5 21.Qa4 a5  
22.Qc2 Rd6 23.Be2 Bxe2 24.Rxe2 Rfd8  
25.Red2 g5 26.Qd3 h5 27.Qe2 g4



28.f4 Qe4 29.Qd3 Qe6 30.Re1 Qe4  
31.hxg4 hxg4 32.Qxe4?

32.Red1 would hold things together.  
Black gets the d- and h-file, and with good  
technique, gets the win also.

32...dxe4 33.Rde2 Kf7 34.Kf2 Rh8  
35.Rc2 Rd3 36.Ree2 Rhd8 37.Rc1 Rd1  
38.Rcc2 R8d3 39.g3 c4 40.Kg2 Ke6  
41.Kf2 Kd5 42.Kg2 Kc5 43.Kf2 Kb5  
44.Kg2 Ka4 45.Kf2 Kb3 46.Kg2 Rb1  
47.Kf2 Rdd1!

This trades off one rook and wins the  
b-pawn, or even mate with Black's rooks on  
h2 and h3.

48.Kg2 Ra1!?

Black misses mate in the corner begin-  
ning with 48...Rg1+.

49.Red2 Rac1 50.Rxd1 Rxc2+ 51.Kf1  
Rxb2 52.Rd5 Kxc3 53.Rxf5 Kd3 0-1

Polette,D (1646) - Bailey,B (1517)  
Budapest Defense [A52]  
January Thaw

An opening trap in chess, like a good con  
job, can only succeed if your opponent/vic-  
tim is sufficiently greedy. Bailey proves it's  
better to give than to receive.

1.d4 Nf6 2.c4 e5 3.dxe5 Ng4 4.Nf3 Nc6  
5.Bf4 Bb4+ 6.Nbd2 Qe7 7.a3 Ngxe5  
8.axb4??

You can't really fault Dan too much. Hey,  
a bishop's a bishop!

8...Nd3# 0-1



[The "Kieninger Trap" — reason enough  
to love the Budapest Defense. —Editor]



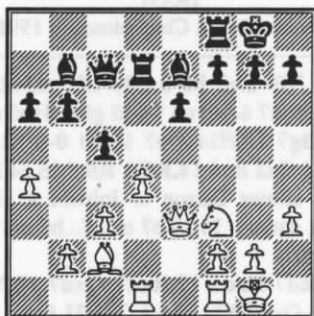
Brian Bailey, player/director

Games from the Freeze-Out  
Notes by Dan McCourt

Legan,J (704) - Easter,E (1224)  
Sicilian [B50]  
Five Valley Freeze-Out

Eric's Sicilian gets off to a good start but  
the Sicilian is a risky business. Johnny plays  
the white pieces with a tactical flair that  
betrays his ten years.

1.e4 c5 2.Nc3 d6 3.Nf3 a6 4.a4 Nc6  
5.Bc4 e6 6.d3 Be7 7.Be3 Nf6 8.0-0 0-0  
9.Qd2 b6 10.h3 Bb7 11.d4 Nb4 12.Rad1 d5  
13.exd5 Nfxd5 14.Nxd5 Nxd5 15.Bb3 Nxe3  
16.Qxe3 Qc7 17.c3 Rad8 18.Bc2 Rd7?



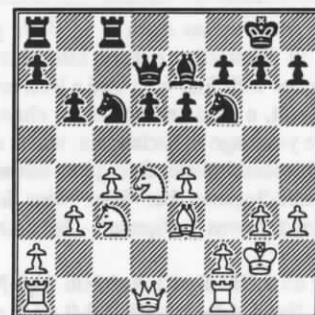
19.Ne5 cxd4? 20.Qd3! g6 21.Nxd7 Qxd7  
22.Qe4 Rc8 23.Rxd4! Qe8 24.Qd3 Be5 ½-½  
A good game by two of Missoula's new  
players.

Jensen,M (1840) - Nowak,G (2197)  
English [A30]  
Five Valley Freeze-Out

Will it be an English attack or a Sicilian  
defense? White has a bishop on the long  
diagonal, his rooks look fine, and shouldn't  
that black queen pawn be something of an  
achilles heel?

1.Nf3 Nf6 2.g3 c5 3.c4 b6 4.Bg2 Bb7  
5.0-0 e6 6.Nc3 Be7 7.d4 cxd4 8.Nxd4 Bxg2  
9.Kxg2 0-0 10.e4 d6 11.Be3 Qd7 12.b3  
Nc6 13.h3 Rfe8

The Octopus always seems to find a way  
of transforming a series of ordinary-looking  
moves into a menacing middlegame.



14.Rc1 Nxd4 15.Qxd4 Qb7 16.Kh2  
Rd8 17.Rfd1 Rac8 18.f3 Nd7 19.Qd2 a6  
20.Qe2 Rb8 21.Bd4 b5 22.cxb5 axb5 23.f4  
b4 24.Na4 Rdc8 25.Bb2 h6 26.f5 e5  
27.Qd3 Nf6 28.Re1 Rxc1 29.Bxc1 Rd8  
30.Re2 d5 31.exd5 Rxd5 32.Qf3 e4 33.Qf1  
Qd7 34.Nb6 Rd1?

The knight fork has more bark than bite.  
Now 34...Rxf5 in order, but black responds  
with a "lemon", proving that even the mas-  
ters are vulnerable to surprise.

35.Nxd7 Rxf1 36.Nxf6+ Bxf6 37.Bf4  
Bc3 38.Kg2 Rb1 39.Kf2 Bd4+ 40.Be3 Be5  
41.Be5 Bc3 42.Rxe4

A rising flag brings a draw offer that  
Black can't risk passing.. ½-½

Young,S (1144) - Stuckey,R (1190)  
Queen's Gambit Declined [D70]  
Five Valley Freeze-Out

White flexes some Queen's Gambit mus-  
cle, collecting two pawns right out of the  
opening. Black, however, makes the most of  
being "relegated" to a half-open f-file.

1.d4 Nf6 2.Nf3 d5 3.e3 g6 4.c4 e6 5.Nc3  
Bg7 6.Bd3 c6 7.0-0 Nbd7 8.Re1 Qc7 9.e4

e5 10.exd5 0-0 11.dxc6 bxc6 12.dxe5 Ng4  
13.e6 Nc5 14. exf7+ Qxf7



15.Ng5? Qxf2+ 16.Kh1 Nxd3 17.Nce4  
Qxe1+ 18.Qxe1 Nxe1 19.g3? Rf1# 0-1

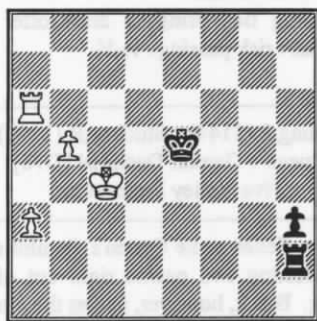
Young,S (1144) - Gilbertsen,E (1443)  
[D02]  
Five Valley Freeze-Out

Eric, who teaches math at St. Joe's grade school in Missoula, comes into this last round game with four wins and a lock on first place. Scott, a grade school chess champion a couple years ago in Oklahoma, wants a win to clinch second place. Eric gains advantage in the middlegame, but Scott wins in the Rooks and pawns endgame -- by counting better!

1.d4 d5 2.Nf3 Bg4 3.Ne5 Nf6 4.g3 Nbd7  
5.Nxg4 Nxg4 6.Bg2 Ngf6 7.0-0 e5 8.e3 e4  
9.Nc3 Bb4 10.Bd2 0-0 11.f3 Bxc3 12.Bxc3  
c5 13.fxe4 Nxe4 14.Bxe4 dxe4 15.Qg4 f6  
16.Rab1 Qe7 17.dxc5 Nxc5 18.b4 Ne6  
19.Qxe4 Rae8 20.Rf2 Ng5 21.Qxe7 Rxe7  
22.Re2 Rfe8 23.Rb3 f5 24.Kg2 g6? 25.h4?

[25.Bf6 snags a piece or the exchange.  
—Editor.]

25...Ne4 26.Be1 Kf7 27.Kf3 h5 28.Bc3  
Nxc3 29.Rxc3 Re4 30.a3 Rd8 31.Rc7+ Re7  
32.Rxe7+ Kxe7 33.Kf4 Kf6 34.e4 Rd4  
35.c3 Rc4 36.Re3 b5 37.Kf3 a6 38.e5+ Ke6  
39.Ke2 f4 40.gxf4 Rxf4 41.Rg3 Rxh4  
42.Rxg6+ Kxe5 43.Rxa6 Rh2+ 44.Kd3 h4  
45.c4 bxc4+ 46.Kxc4 h3 47.b5



47...Kf4? 48.b6 Rc2+?  
[48...Rb2 is best. —Editor.]

49.Kb3 h2 50.b7 Kf5 51.b8Q h1Q  
52.Qf8+ Kg4 53.Rg6+ Kh5 54.Qh6# 1-0

Chester,J (1460) - McBroom,B (1597)  
[A48]  
Five Valley Freeze-Out

Play in this game moves along Benoni lines. The players emerge from middle-game exchanges with equality, but a crucial oversight costs White a piece.

1.d4 Nf6 2.Nf3 g6 3.e3 Bg7 4.Bd3 d6  
5.0-0 0-0 6.Nbd2 Nbd7 7.e4 c5 8.d5 a6 9.c4  
Ng4 10.Rb1 Nge5 11.Nxe5 Nxe5 12.Be2  
Rb8 13.f4 Nd7 14.Nf3 b5 15.b3 bxc4  
16.Bxc4 Nb6 17.Qd3 Nxc4 18.bxc4 Rxb1  
19.Qxb1 Qa5 20.Qc2 Bd7 21.Bd2 Qa3  
22.Qb3 Qxb3 23.axb3 Rb8 24.Rb1 Ba4



25.b4

[25.e5 might be better. Then Black can't really take on b3 yet: 25...Rxb3 would be met by 26.Ra1, and 25...Bxb3 leaves the rook pinned. —Editor]

25...Bc2 26.Rc1 Bxe4 27.bxc5 dxc5  
28.Be3 Rb1 29.Rxb1 Bxb1 30.Bxc5 Kf8  
31.Bb4 Ke8 32.Kf2 Bd3 33.c5 Be4 34.d6  
exd6 35.exd6 Bf5 36.Ke3 f6 37.Kd4 Kd7  
38.Nd2 Be6 39.Ne4? f5+ 40.Ke3 fxe4  
41.Kxe4 Kc6 42.h3 Bd5+ 43.Ke3 Bc4  
44.h4 h5 45.Kf2 Be6 46.Ke2 Bf6 47.Kd3  
Bxh4 48.Ke4 Bf6 49.Kf3 Bf5 50.Ke3 Kb5  
51.Ba3 a5 52.Kf3 Kc4 0-1

### Other recent games

Hildenstab,D - Moore,S  
[A45]  
Montana Postal Championship 1998

1.d4 Nf6 2.e3 b6 3.Bd3 Bb7 4.Nd2 d6  
5.Ng3 Nbd7 6.0-0 e5 7.Bf5 g6 8.dxe5 dxe5  
9.Bh3 Bg7 10.Nc4 Qe7 11.b3 0-0 12.Bb2  
Rad8 13.Qe2 Ba6 14.Rfd1 Rfe8 15.e4 Nh5

This allows Duane to initiate a pawn-winning combo. 15...Bb7 or 15...h6 are both much safer.

16.Bxd7 Rxd7 17.Rxd7 Qxd7 18.Nxb6  
axb6 19.Qxa6 Nf4 20.g3 Qg4 21.Qa4

The immediate 21. Ne1 would keep better

control of the d-file. Now Sherwood invades the enemy camp.

21...Rd8 22.Ne1 Rd2 23.Qe8+ Bf8  
24.Qxe5 Nh3+



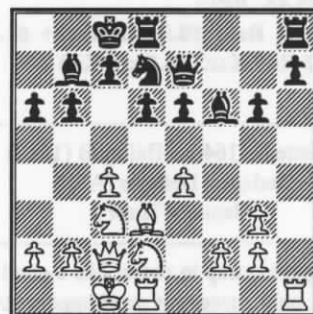
25.Kh1 Nxf2+ 26.Kg1 Nh3+ 27.Kh1  
Qxe4+ 28.Qxe4 Nf2+ 29.Kg1 Nxe4 30.Bc1  
Bc5+ 31.Kh1 Re2 32.Nd3 Bd4 33.Bb2  
Bxb2 34.Nxb2 Nd2 35.Kg1 Nf3+ 36.Kf1  
Rxc2 0-1

Moore,S (1705) - Gisselbeck,D (1377)  
[D02]  
UCCC 2nd Fall Open

1.Nf3 d5 2.d4 Nf6 3.Nbd2 e6 4.e3 Bd6  
5.Bd3 0-0 6.0-0 b6 7.e4 Nxe4 8.Nxe4 dxe4  
9.Bxe4 c6 10.Re1 Bb7 11.Bxh7+! Kxh7  
12.Ng5+ Kg6 13.Qg4 Qd7 14.Nxe6+ 1-0

Erickson,R - Moore,S  
[A47]  
Montana Postal Championship 1998

1.d4 Nf6 2.Nf3 b6 3.Bf4 Bb7 4.e3 e6  
5.Bd3 Nh5 6.Bg3 Be7 7.c4 d6 8.Nc3 Nd7  
9.d5 g6 10.e4 Nxg3 11.hxg3 Bf6 12.Nd2  
Qe7 13.Qc2 a6 14.dxe6 fxe6 15.0-0-0



16.Be2 Rde8 17.f4 Qg7 18.Ndb1 g5  
19.Bf3 g4 20.Be2 h5 21.b4 h4 22.Rd3 h3

This might have been the time for 22...e5  
23.f5 Bg5+, followed by an eventual ...Nf6.

23.Rh2 hxg2 24.Rxg2 Rh3 25.Rd1  
Reh8 26.Bd3 R8h5 27.Kb2 Nb8 28.b5 a5  
29.Kb3 Nd7 30.Na4 Kb8 31.Nbc3 Rh1



32.Rxh1 Rxh1 33.Rh2 Rxh2 34.Qxh2 Bxc3  
35.Nxc3 Nc5+ 36.Kc2 Qd4 37.Qe2 Nxd3  
38.Qxd3 Qf2+ 39.Kb3 Qg2 40.Qe3 Qf3  
41.Qe1 Qd3 ½-½

Moore,S - Hildenstab,D  
Two Knights Defense [C54]  
Montana Postal Championship 1998

1.e4 e5 2.Bc4 Nf6 3.d3 Nc6 4.Nf3 Bc5  
5.c3 d5?! 6.exd5 Nxd5 7.0-0  
7.Qb3 was stronger.  
7...0-0



8.Nxe5?

This cedes the initiative. Instead a line like 8. b4 Be7 9. b5 seems to give good play.

8...Nxe5 9.d4?

This cedes the game.

9...Nxc4 10.dxc5 Re8 11.Qb3 Na5  
12.Qc2 Nc6 13.Na3 Qe7 14.b4 Qf6 15.Bb2  
Bf5 16.Qc1 Qg6 17.Qd1 Nf4 0-1

Hardy,S (1400) - Carpenter,R (1822)  
Caro-Kann - Advance Variation [B12]  
UCCC 1st Winter Open

Sam gets a big upset in this interesting and complex game.

1.e4 c6 2.d4 d5 3.e5 Bf5 4.Bd3 Bxd3  
5.Qxd3 Qa5+ 6.Nc3 Qa6 7.Qg3 e6 8.Nge2  
Ne7 9.0-0 Nf5 10.Qg4 c5



The thematic freeing move of the Caro-Kann in almost all variations. Here it has not been adequately prepared, as White sees.

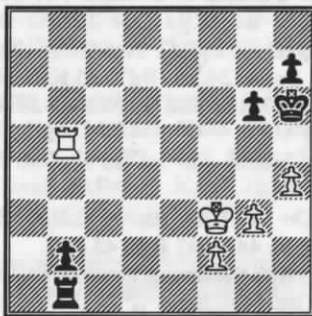
11.Nxd5 exd5 12.Qxf5 Nc6 13.e6 f6  
14.Qxd5 Rd8 15.Qh5+ g6 16.Qf3 Be7  
17.Bh6 cxd4 18.Bg7? Rg8 19.Bh6 Ne5  
20.Qe4 Qxe6 21.Nxd4 Qd5 22.Qxd5 Rxd5  
23.Be3 Kf7 24.c3 Rgd8 25.b4 R8d7 26.a4  
Nc4 27.Rfe1 Nxe3 28.Rxe3?

28.fxN was required. Now Romie gets back into the game. For a while.

28...Bxb4 29.cxb4 Rxd4 30.g3 Rxb4  
31.a5 Rb2 32.Rc1 b5 33.axb6 axb6 34.Rc6  
Rb7 35.Rf3 b5

Instead 35...f5 36.g4 Rb4 should hang on to the pawn.

36.Rxf6+ Kg7 37.Rb6 Rxb6 38.Rxb6  
b4 39.Kg2 b3 40.Kf3 Kh6 41.h4 Rb1  
42.Rb5 b2?

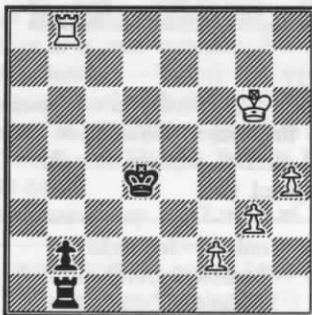


This allows 43.Rb7!, putting Black in zugzwang. After 43...g5 Rb6+, the king must retreat and give up the pawn or mate follows. Sam goes a different route.

43.Ke2 Kg7 44.Kf3

Going after the the over-extended pawn with 44.Kd3 leads to a draw.

44...Kf6 45.Kf4 Ke6 46.Kg5 Kd6  
47.Kh6 Kc6 48.Rb8 Kc5 49.Kxh7 Kd4  
50.Kxg6



50...Ke4?

The losing move. After 50...Kc3 Black keeps the draw. E.g. 50...Kc3 51.h5 Rh1 52.h6 b1=Q+ 53.RxQ RxR 54.h7 Rb8. At this point Black could check the White king to death, threatening ...Rb8, ...Rh8, and ...Rxh7 if the king gets too far from the pawn.

51.h5 Kd3 52.h6 Kc2 53.h7 Rh1  
54.Kg7 b1Q 55.Rxb1 0-0

McBroom,W (1598) - Moore,S (1715)  
Torre Attack [A47]  
UCCC 2nd Winter Open

1.d4 Nf6 2.Nf3 b6 3.Bg5 Bb7 4.Nbd2 e6  
5.Bxf6 Qxf6 6.e4 d6 7.Bd3 Nc6 8.c3 Be7  
9.Qe2 0-0 10.0-0-0 a5 11.h4 e5 12.g4 g6  
13.g5!

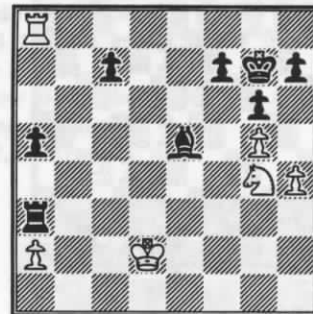


Little does Sherwood realize that this is all a part of Bill's master plan to force mate on move 45.

13...Qg7 14.d5 Nb8 15.Nh2 Na6 16.Ng4  
Nc5 17.Bc2 Ba6 18.Qe3 b5 19.f4 exf4  
20.Qxf4 Nd7 21.Nf3 b4 22.e5 dxe5  
23.Nfxe5 Nxe5 24.Qxe5 Qxe5 25.Nxe5  
bxc3 26.bxc3 Ba3+ 27.Kd2 Rfe8 28.Rde1  
Rad8 29.Bb3?

29.Nd7 could have repositioned the knight and saved the pawn.

29...Bb7 30.Kc2 Bxd5 31.Bxd5 Rxd5  
32.Nc4 Rxe1 33.Rxe1 Bd6 34.Re8+ Kg7  
35.Ra8 Bg3 36.Ne3 Rc5 37.Ng2 Be5  
38.Ne3 Rxc3+ 39.Kd2 Ra3 40.Ng4



40...Rxa2+?

So natural, yet so wrong. Sherwood doesn't know it yet, but the best he can hope for is a draw. 40...Bf4, followed by ...h6 would have given the king air.

41.Kd3 Ra3+ 42.Ke2 Bd4?

42...Bd6 would hold the draw. E.g. 42...Bd6 43.Nf6 Bf8 44.Ne8+

43.Nh6 Ra2+ 44.Kd3 1-0

The checks will soon run out, and the farsighted wisdom of Bill's 13th move will become evident with Rg8, mate.

Jensen, M - Nowak, G  
Dutch - Stonewall [A40]  
Valentine Open

1.d4 e6 2.e3 f5 3.f4 Nf6 4.Nf3 Be7 5.Bd3  
c5 6.c3 Na6 7.0-0 8.Bd2 Nc7 9.a4 Nce8  
10.Be1 cxd4 11.exd4 Nd6 12.Bh4 b6  
13.Bxf6 gxf6 14.Qe1 Bb7 15.Nbd2 Qc7  
16.Kh1 Qc6 17.Be2 Rf7 18.Rg1 Rg7  
19.Nh4 Kh8 20.Bf3 Ne4 21.Qe2 Rag8



22.Rge1 d5 23.g3 Bd6 24.Nxe4 fxe4  
25.Bg2 f5 26.Qf2

Maybe 26.Qh5 here instead, eventually  
going after the pawn on e5.

26...Be7 27.Bf1 Bxh4 28.gxh4 Rg1+

With White's pawns busted and both bish-  
ops locked in for a long time, this exchange  
makes good sense.

29.Qxg1 Rxg1+ 30.Kxg1 Qd6 31.a5 b5  
32.Bxb5 Qxf4 33.Re2 Qxh4 34.Rg2 f4  
35.Rf1 f3 36.Rg3 Qf4 37.Bd7



37...Qf7

The Octopus may have been concerned  
about getting checkmated in the corner if e6  
were to fall. However, 37...Ba6 38.Bxe6 h5  
looks like it wins for Black. White's rook is  
under attack, but sliding it up to f2 allows  
...Qc1+, and sliding it to the side allows ...f7+.

38.Bb5 a6 39.Be2 Bc6 40.Bxf3 Bb5?

40...exB should win once Black gets his  
bishop active. Now Mike pries open a file  
and wins on the queenside.

41.Be2 Qe7 42.Bxb5 axb5 43.a6 h5  
44.Rf4 e3 45.Kf1 e2+ 46.Kxe2 e5 47.Rf5  
exd4+ 48.Kd1 Qe8 49.a7 h4 50.a8Q hxg3  
51.Qxe8+ 0-1

McCourt, D - Legan, J  
Philidor's Defense [C41]  
Valentine Open

Early in the game Dan finds himself in the  
unenviable position of losing the initiative to  
a younger player and having to hope for a  
mistake. After forty-six excellent moves the  
mistake does finally come, but even then  
Johnny still gets a draw.

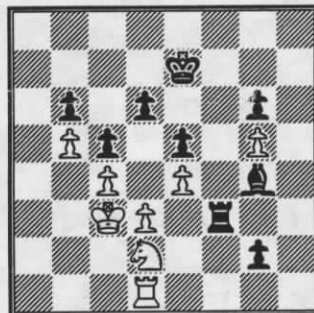
1.e4 e5 2.Nf3 d6 3.Nc3 c6 4.Be2 Qe7  
5.d3 Nd7 6.Bd2 f6 7.0-0 g6 8.h3 Nh6 9.a3  
Bg7 10.g3 Nf7 11.b4 Nf8 12.Na2? Bxh3  
13.Re1 Bd7 14.c4 Ne6 15.Nc3 Nd4 16.Nh2  
Nxe2+ 17.Qxe2 h5 18.Kg2 Bh6 19.Bxh6  
Nxb6 20.Red1 Kf7 21.f3 Rag8 22.Rd2 Kf8  
23.Qe3 b6 24.Raa2 f5 25.Rab2 Nf7 26.a4  
Qg5 27.Qe2 h4 28.g4 Qf4 29.Qf2 fxe4  
30.fxe4 Qxf2+ 31.Kxf2 Nh6 32.g5 Ng4+  
33.Nxg4 Bxg4 34.b5 Bd7 35.Ke3 Ke7  
36.Na2 h3 37.Rh2 Rf8 38.Nc1 c5 39.Nb3  
Bg4 40.a5

Hoping Johnny will act his age and take  
the pawn. As if.

40...Rf3+ 41.Kd2 Rhf8 42.Kc3 Rg3  
43.axb6 axb6 44.Rbd2 Rff3 45.Rd1

45.Re3, with the double threat of BxR and  
Rxe4, is a little better.

45...Rg2 46.Rxg2 hxg2 47.Nd2



47...Rf1?

The only real mistake in an otherwise  
solid and impressive performance. Johnny  
missed 47...Rxd3+!, winning outright.

Draw agreed. 1/2-1/2

Yonker, J - Jensen, M  
Stonewall [A40]  
Valentine Open

Jeremy's "rope-a-dope" tactics pay off  
with this draw against the eventual tourna-  
ment winner.

1.d4 b6 2.f4 f5 3.Nf3 e6 4.e3 Bb7 5.Bd3  
Nf6 6.0-0 c5 7.c3 Nc6 8.Be2

The first of many passive bishop moves. It  
is as if Jeremy is saying "Storm my castle if  
you dare."

8...Be7 9.Ne5 Nxe5 10.fxe5 Ne4 11.Bf3  
0-0 12.Nd2 Qc7 13.Qc2 d5 14.Be2 g5

15.Qd1 Kh8 16.Nf3 Rg8 17.Ne1 Rf8  
18.Nd3 Ba6 19.Bf3 g4 20.Be2 Bxd3  
21.Bxd3 Ng5 22.Be2 Qd8 23.Bd2 Qe8  
24.Be1 Ne4 25.Bd3 Bg5 26.Qe2 Qg6  
27.Bxe4



The bishop finally gives up its life, but a  
full life it was, having moved ten times in the  
opening.

27...dxe4 28.Bg3 cxd4 29.cxd4 h5  
30.Qf2 Qh7 31.Bf4 Be7 32.a3 h4 33.Qe2  
Rc8 34.Rac1 Rgd8 35.Qa6! Rxc1 36.Rxc1



White has a great game, but the players  
agreed to a draw. 1/2-1/2

Hardy, S - Furdell, B  
Sicilian [B23]  
Valentine Open

1.e4 c5 2.Nc3 Nc6 3.f4 g6 4.Nf3 Bg7  
5.Bc4 e6 6.d3 Nge7 7.a3 b6 8.Rb1 a6 9.0-0  
0-0 10.Qe1 d5 11.exd5 exd5 12.Ba2 d4  
13.Ne4 Bg4 14.Qh4 h5 15.h3 Bxf3 16.Rxf3  
Nf5 17.Qe1 Qe7



18.Bd2 Bh6 19.Bd5 Rac8 20.b4 Nd8  
 21.bxc5 bxc5 22.Rb6 Qa7? 23.Rxg6+ Kh8  
 24.Rf6 Qd7 25.Nd6 Rb8 26.Nxf5 Qxd5  
 27.Rxh6+ 1-0



Mike Jensen, destroyer of octopi

Brownlee,K - Jensen,M  
 Queen's Fianchetto Defense (?) [B00]  
 Valentine Open

Riding high on his round 3 defeat of Greg Nowak, Mike makes use of a pinned pawn (twice) to mop up in round 4.

1.e4 b6 2.d4 Bb7 3.Nc3 e6 4.Nf3 Bb4  
 5.Bd3 Nf6 6.Bg5 h6 7.Bxf6 Qxf6 8.a3  
 Bxc3+ 9.bxc3 0-0 10.0-0 d6 11.a4 a5 12.c4  
 Nd7 13.c3 e5 14.Bc2 Rad8 15.d5 Ba6  
 16.Bb3 Nc5 17.Re1 Qf4 18.Qc2 f5 19.exf5  
 Rxf5 20.Nh4 Rg5



21.Nf3? Qxf3 22.g3 Rf8 23.Ba2 Bc8  
 24.Re3 Qf7 25.Rae1 Bf5 26.Qd2 Bg6  
 27.f4? Qxf4

Fool me once, shame on you, fool me twice, shame on me.

28.Bb1 Bxb1 29.Rxb1 Qxc4 30.Qg2  
 Rgf5 31.Qh3 Qxd5 32.Ree1 Nxa4 0-1

## Tournaments — from page 3

### UCCC 1st Winter Open

Like the 3rd Fall Open, the UCCC First Winter Open featured both a clean sweep victory and a big upset. The sweep this time was by Mike Jensen, who won the event with a score of 3-0.

The upset came at the hands of Sam Hardy, whose first-round endgame defeat of Romie Carpenter (rated 422 points above him) catapulted him into the upset derby lead.

### UCCC 2nd Winter Open

Bill McBroom pulled a rabbit out of his hat to beat Sherwood Moore in round three of the Second Winter Open. The win gave Bill first place with 2½ - ½. This time Sam Hardy was unable to repeat his upset ways, although he did make the top players sweat.

### Missoula County Championship

Greg Nowak and Hans Andersen beat a field of 26 contenders, including fifteen youth players, to share the non-rated Missoula County Championship on January 9th. After spanking the upstart

youths, the two went head-to-head in a final round draw to split the title.

Ralph Fowler, a fourteen-year-old from Bitterroot, took a strong third place with four points. He also won the top Junior prize, a half point above perennial junior favorite Johnny Legan of Corvallis.

The surprise of the tournament was the arrival of nine new players from Thompson Falls. Josh McMahon was the top player from this group, winning three games and the Junior fourth place prize.

### Snowbound Chess Captives

Eight players convened for a pleasant day of chess at the Shack Restaurant, with Greg Nowak getting four points to take first place in the five-round event.

Hans Andersen and Dan McCourt tied for second and third place with a score of 3.5.

Mike Johnson, a 1260 player from Helena, pulled off the shocker of this G/30 tournament: A time-forfeit draw against the Octopus. Mike actually had winning chances near the end until a late blunder forced him to scramble to avoid checkmate. Greg's flag fell shortly after he had captured Mike's last piece, barely avoiding a forfeit loss.



**Grand Prix**


**Race Leaders**

Dan McCourt	14.56
Doug Hansen	12.18
Greg Nowak	10.02
Thad Suits	9.05
James Borchardt	8.52
Alex Dawson	8.52
Jim Skovron	7.62
Brian Bailey	5.51
Michael Johnson	5.51

**Biggest Upset to Date**  
 Sam Hardy - 422 points

**The Polgar Corner**

The following position is taken from the encyclopaedia *Chess* by László Polgár. How quickly can you find this mate in two?  
 The answer is on the back page.



White to move and mate in two.

# Tournament Tables

**Helena's January Thaw (1/23,24/99)**

#	Name	Rtng	Rd 1	Rd 2	Rd 3	Rd 4	Rd 5	Total
1	GREGORY W NOWAK	2200	W6	W4	W2	D3	W8	4.5
2	KIP H STUBBERUD	1993	W14	W10	L1	W5	W4	4.0
3	JAMES BORCHARDT	1764	W11	W5	D8	D1	W9	4.0
4	DOUGLAS J HANSEN	1682	W12	L1	W9	W6	L2	3.0
5	DANIEL J MCCOURT	1660	W7	L3	W14	L2	W11	3.0
6	BRIAN BAILEY	1517	L1	W15	W12	L4	W10	3.0
7	MICHAEL JOHNSON	unr.	L5	L11	W16	W14	W13	3.0
8	RON ERICKSON	1713	H---	W13	D3	D10	L1	2.5
9	SHERWOOD MOORE	1705	W15	H---	L4	W13	L3	2.5
10	DANIEL K POLETTE	1646	W16	L2	W11	D8	L6	2.5
11	HAL S AMUNDSON	1273	L3	W7	L10	W12	L5	2.0
12	NATHANAEL WILLETT	920	L4	B---	L6	L11	W16	2.0
13	ANDREA BAILEY	772	B---	L8	W15	L9	L7	2.0
14	MELVIN P DRAKE	1320	L2	W16	L5	L7	D15	1.5
15	FREDDIE JAY	1230	L9	L6	L13	W16	D14	1.5
16	JASON AMES	unr.	L10	L14	L7	L15	L12	0.0

**1998 Montana Postal Championship**

#	Name	1	2	3	Tot
1	Ron Erickson	***	½ / ½	0 / ½	1½
2	Sherwood Moore	½ / ½	***	0 / 1	2.0
3	Duane Hildenstab	1 / ½	1 / 0	***	2½

**Five Valley Freezeout - Open Section (1/16,17/99)**

#	Name	Rtng	1	2	3	4	5	6	7	Tot
1	Nowak	2197	**	D	W	W	W	X	U	4.5
2	Jensen	1840	D	**	H	W	W	W	U	4.0
3	McBroom	1597	L	B	**	D	W	W	U	3.5
4	McCourt, D	1665	L	L	D	**	D	W	U	2.0
5	Chester	1460	L	L	L	D	**	U	W	1.5
6	Joyce	1256	F	L	L	L	U	**	U	0
7	Stuckey	1190	U	U	U	U	L	U	**	0

**UCCC 3rd Fall Open**

#	Name	Rtng	Rd 1	Rd 2	Rd 3	Tot
1	Sherwood Moore	1642	W6	W4	W2	3.0
2	Romie Carpenter	1822	W5	W3	L1	2.0
3	Donald Gisselbeck	1377	B---	L2	W5	2.0
4	Robert A McKean	1700	W7	L1	H---	1.5
5	Daniel J McCourt	1646	L2	W6	L3	1.0
6	Samuel M Hardy	1400	L1	L5	W7	1.0
7	William McBroom	1621	L4	H---	L6	0.5

**Five Valley Freezeout - Reserve Section (1/16,17/99)**

#	Name	Rtng	1	2	3	4	5	6	Tot
1	Gilbertsen	1443	**	L	W	W	W	W	4.0
2	Young	1144	W	**	L	W	W	D	3.5
3	Stuckey	1190	L	W	**	L	W	W	3.0
4	Furdell	1326	L	L	W	**	L	W	2.0
5	Easter	1224	L	L	L	W	**	D	1.5
6	Legan	704	L	D	L	L	D	**	1.0

**UCCC 1st Winter Open**

#	Name	Rtng	Rd 1	Rd 2	Rd 3	Tot
1	J Michael Jensen	1860	W2	W5	W4	3.0
2	Sherwood Moore	1642	L1	B---	W5	2.0
3	Romie Carpenter	1822	L5	W4	U---	1.0
4	Bill McBroom	1621	B---	L3	L1	1.0
5	Samuel M. Hardy	1400	W3	L1	L2	1.0

**Valentine Open (2/20,21/99)**

#	Name	Rtng	Rd 1	Rd 2	Rd 3	Rd 4	Tot
1	J Michael Jensen	1840	W5	D4	W2	W7	3.5
2	Gregory W Nowak	2197	W6	W3	L1	W4	3.0
3	Gary Younker	1667	W10	L2	D7	W5	2.5
4	Jeremy Younker	1485	W9	D1	D6	L2	2.0
5	Samuel Hardy	1390	L1	W8	W9	L3	2.0
6	William H McBroom	1597	L2	W10	D4	H---	2.0
7	Keith Brownlee	1760	D8	D9	D3	L1	1.5
8	William J Furdell	1326	D4	L57	W10	U---	1.5
9	Daniel J McCourt	1665	L4	D7	L5	D10	1.0
10	Johnny Legan	725	L3	L6	L8	D9	0.5

**UCCC 2nd Winter Open**

#	Name	Rtng	Rd 1	Rd 2	Rd 3	Tot
1	Bill McBroom	1598	H---	W5	W3	2.5
2	J Michael Jensen	1860	W5	D3	H---	2.0
3	Sherwood Moore	1715	B---	D2	L1	1.5
4	Daniel McCourt	1665	U---	U---	W5	1.0
5	Samuel M. Hardy	1400	L2	L1	L4	0.0

## Upcoming Events

**USCF and MCA (or other state) memberships required for all events unless otherwise specified.**

### March 20 — Steinitz Memorial Tornado

**Format:** 3 round rated Swiss, G/60. **Site:** Shack Restaurant, 222 W. Main, Missoula. **EF:** \$13 if by 3/13, \$15, if by 3/19, \$20 at site. Juniors \$5 less. **Prizes** (based on \$150 in entries): 1st - \$30, 2nd - \$25, 3rd - \$20. \$10 Junior prize based on 2 or more entries. MCA membership to best Andersen Opening (1.P-QR3). **Rounds:** 11:00, 1:30, 4:00. **Entries to:** Greg Nowak, Hellgate Station, PO Box 8572, Missoula, MT 59807. **Other:** \$1 rebate if you wear your Octopus T-shirt at event. Please bring USCF ID card.

### March 27 — Western Montana Bookworm

**Format:** G/15; Rounds based on entries, determined at site. 3 sections: Rated Open (USCF & MCA required); Rated Reserve (U/1500) (USCF & MCA required); Non-rated (no membership required). **Site:** Univ. of MT Social Sciences Bldg., room 362. **EF:** Jrs. \$4; Adults \$10 rated, \$8 nonrated. **Prizes:** Based on entries. **Registration:** 9:30-10:00 a.m. at site, or call Dan McCourt, 721-0254. Play begins 10:15.

### March 27 — Last Chance Gulch Chess Club vs. the World

**Format:** Casual, determined at site. **Site:** Capitol Hill Mall, 1600 11th Ave, Helena. **EF:** \$3, proceeds go to MCA. **Prizes:** Gift certificates. **Rounds:** Play begins at 10:00 a.m. and goes until 5:00 p.m. **Contact:** Melvin Drake, 5950 Canyon Ferry Rd, Helena, MT 59602. Tel. 475-3481. **Other:** Unrated tournament. Memberships encouraged but not required.

### April 17-18 — Crocus Open (a Montana Grand Prix event)

**Format:** 5 round Swiss, 50/2, 20/1. Two sections: Open and Reserve (U1500). Format based on 20 entries. Rounds 1 and 2 may be adjourned after first time control. **Site:** Univ. of MT Social Sciences Bldg., room 362. **EF:** Jrs. \$5, Adults \$10 if received by 4/16; half more at the door. **Prizes:** Based on 20 entries. 1st, 2nd, 3rd each section; awards to top U/1800/1600 and biggest upset (established ratings.) **Registration:** 8:30-9:00 a.m. **Rounds:** 9:30, 2:00, 6:30/9:15, ASAP. **Entries to:** Dan McCourt, 608 W. Central, Missoula, MT 59801, phone (406) 721-0254. 1/2 point byes available for all rounds. Must be arranged before start of round 2.

### April 24 — Third Greater Northwest Team Tourney

**Format:** 7 teams, 4 per team, G/30, round robin. **Site:** Shack Restaurant, 222 W. Main, Missoula. **EF:** \$32 per team. Individual \$8 by 4/10, \$10 by 4/17, \$12 by 4/23, \$14 at door. **Prizes:** Winning team shares top team pot equally. 1st place - \$15 each, 2nd - \$5 each. Best board prizes: \$5. **Registration:** Team entries should be submitted by 4/17. Individuals may enter and be in the player-pool for team assignments. **Registration times:** 11:00-11:45 a.m. **Rounds:** Noon, 1:30, 2:50, 4:10, 5:30, ASAP (if needed). **Entries to:** Greg Nowak, Hellgate Station, PO Box 8572, Missoula, MT 59807. **Other:** Limited to 28 players.

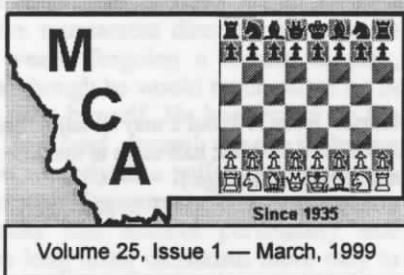
### May 22-23 — The 1999 Montana State Open in Bozeman (always a Montana Grand Prix event)

**Format:** 5 round Swiss, G/2. **Site:** MSU Campus, Student Union Building (SUB), Room 275. **EF:** \$20 by May 20, \$25 at site. **Prizes:** Trophies galore. **Registration:** 8:00-8:45. Rnds: 9, 2, 7 / 9:30, 2:30. **Annual Business Meeting:** Sunday at 8:30 a.m. All resident MCA members urged to attend. **Entries to:** Thad Suits, 2015 4th Ave. N. Great Falls, MT 59401. Special thanks to MSU and the Rec Center for sponsoring the tournament space.

*C*hess is your perpetual recreation, which is the least eligible of any for a sedentary man, because, in accelerating the motion of the fluids, the rigid attention it requires helps to retard the circulation and obstruct internal secretions. Wrapped in the speculations of this wretched game, you destroy your constitution.

*Madame de Brillon,  
letter to Benjamin Franklin, 1780*

Thad Suits  
2015 4th Ave N.  
Great Falls, MT 59401



### Tournament Rule Tip

In any sudden death time control, an illegal move carries a penalty (Handbook Rule 11A.) Two minutes are awarded to the opponent of the player who made the illegal move. This is only true for sudden death time controls, including blitz chess. Other time controls (e.g. 30 moves in 90 minutes) do not carry a time penalty for illegal moves, although having to move the touched piece to a legal square is often penalty enough.

In club play it is common to use a "capture the king" rule, in which an illegal move loses the game, but this is not the standard treatment.

If the illegal move is not discovered until after the opponent of the player who made the move has completed two more moves, then the illegal move stands and there is no penalty.

### Answer to "What's the Cruncher?"

From Hansen-Hoene, 1998 Montana Closed Championship.  
Doug Hansen could have crunched Howard with 1.Rxf7! BxR 2.NxB+ Kh7 3.NxB. That would have won two pieces and a pawn for the rook. Instead, Doug played 1.Kc2 but he went on to win anyway.

Answer to "The Polgar Corner" - 1.Re4+