

MONTANA

CHESS NEWS

Volume 24, Issue 3 — July, 1999

In this issue:

Reports on the Montana Open and the Business Meeting

The MCA loses some good friends: Specials by Dan McCourt and Steve Scarff

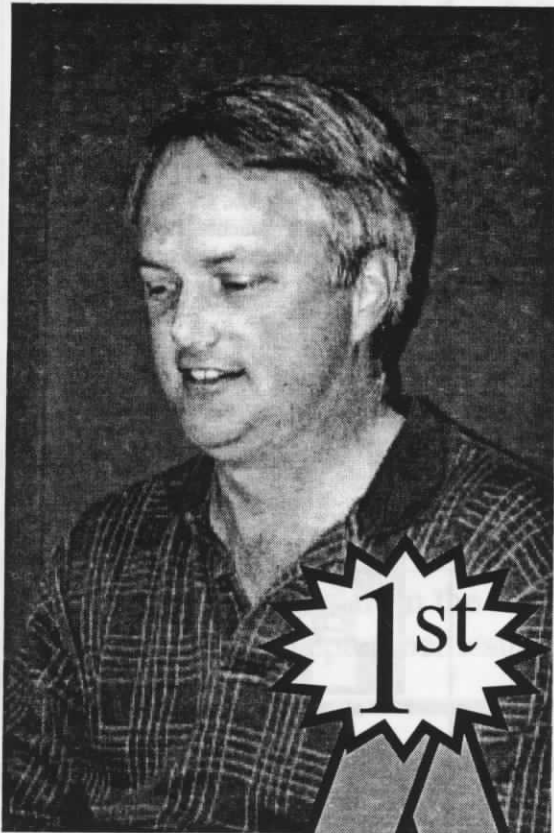
Remembering Lyle Petersen and Steve Smith

And, coming in the September issue:

Remembering John C. Thompson

**It's Skovron, Hansen and Suits at Triple Header
Nowak wins Midsummer Open**

David Duke Wins 64th Montana Open



The math was simple. By the end of round four all the rest of the field had stumbled, leaving only David Duke of Billings with a shot at catching Steve Fabian, who had so far played perfect chess. Going into their round five showdown, David was a half a point behind Steve, so he knew that a draw would not be enough. He played his usual English Opening just well enough to come away with the win — and his first ever Montana Open title.

Steve, the hottest of the eight red-hot players who made the trip to Bozeman from Spokane, had already mowed down some tough opponents. These included the always-dangerous Ron Matous and the always-greedy Thad Suits, who, scorning to claim a draw in a won ending, watched in horror as his flag fell.

Other Spokane players also fared well, almost sweeping the class prizes: Curt Collyer in Class B, Jeremy Younker in Class C, and Jim Burney in Class D. Here's hoping Montana players can similarly pillage Spokane in some of its events next year.

Hometown Bozeman players made their mark too: David Gentry took home the Class E/unrated trophy; Jim Loy returned to chess in style after a two-year break, winning the Montana Senior Championship on his 52nd birthday; and Haluk Beyenal, originally from Turkey, played far above his 1587 rating and surprised everyone (especially his opponents), by getting third place on tiebreaks, just behind Steve Fabian.

Thirty-four players participated this year, making the event an unqualified financial success. Thanks to all who helped out: The Rec Center at MSU for providing the tournament site; Brian Bailey for making pairings; Sherwood Moore for getting the slick trophies; and Gary Younker for encouraging so many Washington players to come and join the fun.

A report on the Annual Business Meeting in Bozeman

This year's Annual Business Meeting took place in Bozeman on Sunday morning, May 23rd, before the start of round four of the Montana Open. Those in attendance elected a Board of Directors and voted on the issues large and small that members had raised for general debate during the previous year. Here is a summary of the discussions and the votes.

The Secretary-Treasurer reported that thanks in part to a good turnout at the Open this year, the MCA was comfortably in the black, with a bank balance of \$651.31 and only a few bills outstanding. This surplus should tide us through those inevitable cycles during the year when membership renewals are low.

Elections for the Board of Directors went smoothly. Doug Hansen won reelection as MCA President, with Dan McCourt receiving a "promotion" from Western Vice President to Executive Vice President. (Remember, Dan, you're just a heartbeat away now.) Thad Suits was retained as Secretary-Treasurer, proving that you don't have to know anything about being a secretary or a treasurer to be an adequate Secretary-Treasurer.

Two new, but not unfamiliar, faces round out the next year's Board: Les Brennan as Eastern Vice President, and Ron

Erickson as Western Vice President. Presumably State Representative Erickson will now use his heightened stature as officer in the MCA to move from the Fish and Game Committee to the prestigious "House Select Committee on Chess and Checkers."

After elections, members discussed most of the issues on the agenda, with some proposals failing parliamentarily for lack of a second. Most votes were near unanimous, although Ron Erickson often voted as a minority of one just to keep in practice for the legislature.

Seeding for Governor's Cup — A proposal to formalize the past practice of sending the State Champion at the time of the previous Montana Open passed.

Seeding for State Closed (1) — A proposal to seed the State Champion that won the trophy in the case of tied champions passed. This takes effect next year.

New travel bonus multiplier for figuring Grand Prix points

50 - 150 miles = 1.33

151-250 miles = 1.66

251 miles or more = 2.0

Seeding for State Closed (2) — A proposal to seed the highest rated player in the state failed for lack of a second.

Grand Slam Award: A proposal to ease the requirements for winning a Grand Slam title was defeated, as was a proposal to abolish the award altogether. Members decided to keep it hard to win, with the thought that it would be a rare and honored accomplishment.

Grand Prix System (1) — A proposal to abolish it failed for lack of a second, as did a proposal to declare any city's first event its Grand Prix tournament. A proposal to allow up to two Grand Prix events per affiliate was also defeated, but it sparked a debate about the need to concentrate on encouraging more players to travel to tournaments. The following was the result.

Grand Prix System (2) — Members approved an idea of Bill McBroom's to award bonus Grand Prix points to players who travel. Members directed the new Board to devise a formula to convert miles traveled (one way) into bonus points, and here it is: 50-150 miles (e.g., Helena-Great Falls) multiply points earned by 1.33; 151-250 miles (e.g., Billings-Bozeman) multiply points by 1.66; over 250 miles (e.g., Missoula-Katmandu) award double points.

Cash Prize for Grand Prix — A proposal to award a cash prize for future Grand Prix winners passed after a debate about whether the prize should be cash or a gift certificate, and how much the prize should be. Members approved an award of fifty dollars or ten percent of the MCA treasury after the State Open, whichever is less. (Presumably Grand Prix winners will *not* be expected to cover ten percent of the debt if the MCA runs in the red some years.)

Constitutional Amendment to Require Votes by Mail — Failed for lack of a second.

National Tournament Sponsorship - Members passed a resolution directing the Board to investigate the possibility of hosting a small national tournament.

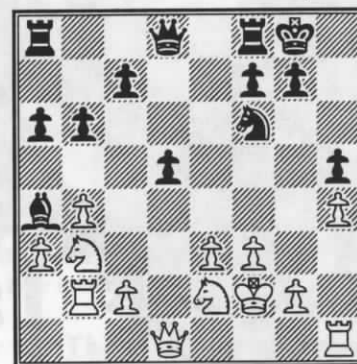
At the end of the meeting, non-resident member Gary Younker spoke up about the desire of Spokane players to arrange a reciprocal understanding with Montana players. It came down to this: Spokane will bring eight of more players to play in one or two of our events every year (and contribute \$100 or more to the prize fund), if Montana players will do the same for Spokane.

It sounds fair. Besides, as several players pointed out, "Spokane has great restaurants!"

Did you find (or miss) a subtly sharp move in one of your games? If so, send it to the editor and ask

What's the Cruncher?

Among strong players, winning a mere pawn can constitute a cruncher. How can Black (a strong player) crunch White (a very strong player) here? The answer is on the back.



Black to move and crunch.

MCA Board Members (1999-2000)

Doug Hansen - President (761-4517)

Dan McCourt - Vice President (721-0254)

Ron Erickson - Western V.P. (549-4671)

Les Brennan - Eastern V.P. (748-2154)

Thad Suits - Secretary/Treasurer (453-6160)

Let them know about your ideas, complaints, suggestions, and praise.

Montana Chess News is published by the Montana Chess Association, an affiliate of the U. S. Chess Federation. Subscription and membership in the MCA is \$9/yr regular, \$5/yr junior.

Editor - Thad Suits, 2015 4th Ave N.

Great Falls, MT 59401

(406) 453-6160 E-mail: suits@initco.net

All submissions are welcome, including photos. Articles by E-mail or on a PC-formatted diskette are especially appreciated. Among the formats supported are ASCII text, Swis-Sys, Microsoft Works, Publisher, Lotus, or .PGN.

Publishing schedule (five issues):

Issue 1 - Mar. 1, Issue 2 (Special for the Open) - May 10, Issue 3 - July 31, Issue 4 - Sept. 25, Issue 5 - Dec. 8. Deadline for most submissions is ten days before the publication date.

Triple Header Championship split three ways

Nowak wins Midsummer Open in Missoula

Triple Header Championship

Great Falls Chess Club rivals Jim Skovron, Doug Hansen, and Thad Suits each took home a trophy and a championship title from this year's Triple Header. The tournament — now an annual event — is really three mini tournaments wrapped into one to determine the State Champion at faster time controls.

First came the 1999 Action Championship (game/30) on Saturday morning. At the end of regulation play, Jim, Doug, and Thad were all tied with 4-1, so the three of them had to do a blitz playoff as a tiebreaker. Thad went on to win.

In the evening, eight players took part in a double round robin to determine the 1999 Blitz Champion. Again there was a tie between Jim and Thad. This time, though, adopting a strategy of getting out of book as fast as possible, it was Jim who got the better of things in the blitz playoff.

The next morning was the Quick Championship (game/15). Here no playoff was required, as Doug stampeded through all five rounds, defeating both Thad and Jim on the way to a perfect 5-0 score and the title.

Other tournament notes:

In ten years of competition, Doug had never gotten a rated win against Thad. This weekend he got two.

Nick Warner, a still-unrated junior member, pulled off an amazing upset of Jim Skovron in the Action Championship on his way to a 3-2 score and a 1690 performance rating. He also got the better of some other experienced players over the course of the weekend. MCA members beware!

In another strong upset, Freddie Jay used a pinned queen to spoil Thad's hopes of regaining the blitz title.

Turnout was small this year. Perhaps next time the Board should find a weekend during the regular season (March?), along with a different host city so other players can attend more easily.

Lastly, Jim Skovron proved himself a true gentleman by pointing out a tournament director error in awarding him the Blitz Championship prematurely. After looking over the last round results, Jim realized that he and Thad Suits (the T.D.) were tied and would have to do a playoff game to determine the champion. He won anyway.



Triple Header Champions Doug Hansen (Quick), Thad Suits (Action), and Jim Skovron (Blitz)

First Summer Open

Both Mike Jensen and Sherwood Moore got 2½ points to tie for first place against a small field in Missoula's First Summer Open. The two winners drew against each another in their second round game.

Midsummer Open

Greg Nowak getting a draw in the last round of a won tournament is nothing new. This time, though, it was not Greg who made the offer, but Sherwood Moore. The draw gave the Octopus 4½ points for clear first place in this year's Midsummer Open.

Turnout was low for the Open — only seven players took part, including Bill McBroom as a houseman. Even so, there were some exciting turns of events, including an upset or two. Chief among them was the game in which Dan McCourt got the better of Rudi Katzl's Damiano Defense (1.e4 e5 2.Nf3 f6).

Despite this loss, Rudi took second place with 3 points. Sherwood Moore and Ron Erickson rounded out the top finishers, sharing third-fourth place.

Octopus wins two

—by Greg Nowak

Bitterroot Championship

At the lovely Victorian "Morning Glory Coffee House" in Hamilton, nine warriors of the royal game vied for the title of Bitterroot Champion in a one-day, five-round tournament on May 1st. While Nowak had 4½ points (including a half-point bye), Boise newcomer Jim McClure and Eric "the Nobleman" Gilbertsen tied for 2nd with 4 points.

Dale "the Gambiteer" Gross, Johnny Legan and Kyle Seamons tied for 4th with 2½. Johnny and Kyle shared the junior title. Will Reynolds, seven years old, competed bravely but went winless this time out in a courageous effort.

The Morning Glory Coffee House was a fine family business with homemade entrees and heavenly deserts. Alas, it was sad to learn that they are going out of business. The owners lent us space for years at no charge and even advertised the events. A thanks and farewell to Danelle and Leslie!

Morphy Memorial

On June 26th, ten devotees of the Royal Game convened at the Shack Restaurant to engage in mental combat. The Octopus was on a roll, sweeping his second Game/60 event in a row.

Dan McCourt, Rich Hall, and Eric Gilbertsen played valiantly and shared second place with two points each.

The event featured the usual McCourt-Hall cliffhanger, with Hall falling off. McCourt won with a minute left on his clock.

Andy Shipp, a provisional 836 rated player, lost a wild melee to Johnny Legan with winning advantages squandered often. Shipp missed a mate in one!

Shipp was not the only one to blunder; I survived the blunder of the decade against Joyce (I could hear those rating points tumbling). Fortunately I was already a rook ahead.

Six of the ten players had provisional ratings, and new USCF member Kyle Seamans (11 years old) played in his first rated event.

Remembering Lyle Petersen

— by Dan McCourt

Editor's note: The MCA lost three friends recently. Lyle Petersen died this past April while he was recovering from a stroke and a broken hip; in June, Steve Smith was struck by a car and killed while riding his bicycle. In these articles, Dan McCourt and Steve Scarff capture the spirit of fondness that all of us feel when we think of them.

In the next issue there will be an article about John Thompson, who, shortly before this issue went to press, died after a long illness. Players who knew John are invited to contribute their thoughts and memories of him for inclusion in this article.

Lyle Petersen was already a Montana chess notable when I first started playing rated chess in the early 1980's. He was a gentle soul from a place called Paradise: A man whose retirement struck me as about as close to idyllic as one could ever imagine.

Lyle and his "child-bride", Nellie, enjoyed family, outdoors, and the Montana chess scene. They had trusty companionship for their treks about the state and in the woods: One of those barkless African canines. They had several throughout the years and I heard several stories — probably one for each dog.

One of their favorite hikes was a walk along the Thompson River. There was a place where they would "skinny-dip" out to an island and picnic. The pooch wouldn't swim out or back and had to be floated along in a small, plastic tub. Once at the island, though, this dog would take to the water just fine, playing, splashing and chasing things. Lyle told me that story while wondering what the whole scene would have looked like anyone passing by on a hike of their own. The silver-haired couple ferrying a dog and a picnic basket across the Thompson River. Pure, green, envy would have been my emotion, had I been such an observer.

Lyle was a veteran of 80-plus years on this planet. He slogged through the European Campaign with the U. S. Army in WWII. He put in 30-some years on the railroad. He played chess for ages — uncounted years.

Health problems slowed Lyle

down the past few seasons. Bowhunting, chess, travel....it all came harder.

About a year ago, I called Lyle with an invitation to play with Hannibal's Elephants in a team chess event in Missoula. He said he would. He said he was looking forward to playing G/30, as several years back he had beaten Les Brennan in a G/30 tourney in Billings. I remarked that beating Les was a real "feather in the hat." Lyle downplayed it some, saying that Les hadn't been playing competitive chess very long at that time. I guessed out loud that Lyle had "taken advantage" of the situation. He said "Yes, that's my nature. Just like the last fight I was in."

Here, I thought, was a story from fifty years back, so I asked for some details. Turns out it was only a few years ago. Some guys cruising past the house appeared to be trying to run over the dog. Nellie saw where they went and Lyle took after them. Hunted them down. When he walked up to their outfit though, he saw he was at some disadvantage, as there were three of them. So he "took advantage" of the situation...and sucker-punched the driver. The long arm of law and order in Paradise, Montana wielded by a septuagenarian vigilante. Once again, I am struck with envy.

Lyle clipped me on more than one occasion — but I am not submitting any of those games. Instead, here's one at the expense of our old pal, Dave Shughart.

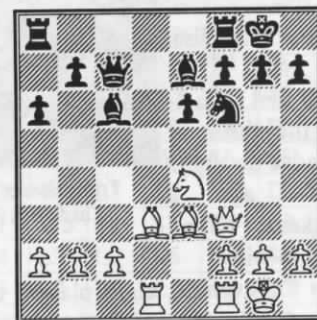


Shughart,D (1841) - Petersen,L (1403)
Sicilian [B32]
Valentine Open 1991

White plays the tricky, but unsound, Stevensville attack on the f-file. Black's steady defense wins the day and the biggest upset prize.

1.e4 c5 2.Nf3 Nc6 3.d4 cxd4 4.Nxd4 Nxd4 5.Qxd4 e6 6.Be3 d6 7.Nc3 a6 8.Be2 Nf6 9.0-0 Be7 10.Rad1 0-0

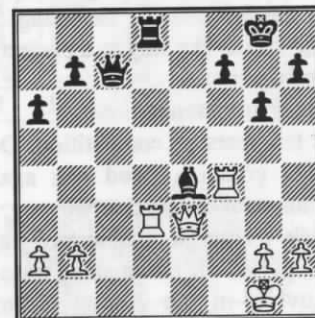
11.e5 dxe5 12.Qxe5 Nd7 13.Qh5 Qc7 14.Bd3 Nf6 15.Qf3 Bd7 16.Ne4 Bc6



17.Nxf6+ Bxf6 18.Qh3 g6 19.c3 Bg7 20.f4 Rad8 21.f5?

The first of several dubious moves on Dave's part. Lyle capitalizes on this misstep and every one that follows.

21...exf5 22.Bd4? Bxd4+ 23.cxd4 Rxd4 24.Qe3 Rfd8 25.Rxf5? Be4 26.Rf4 Rxd3 27.Rxd3



27...Bxd3

Lyle wins the game forcefully from here on, although the following line looks good also: 27...Rxd3 28.Qxe4 Qc5+ 29.Kf1 Qc1+ 30.Kf2 Qc2+.

28.Rh4 f5 29.Qe6+ Kg7 30.Qe3 Be4
White resigns. 0-1

Remembering Steve Smith, 1955-1999

—by Steve Scarff

Montana and Wyoming chess players have lost one of their brightest stars with the tragic death of Steve Smith of Powell, Wyoming, at the age of 43. Steve was killed at 8:25 a.m. on Friday, June 18, when struck from behind by a car while bicycling on a quiet stretch of highway north of Powell.

Steve was born to Barry and Vera Smith on September 12, 1955, in Germany while Barry was in the US Army. Steve grew up in Casper, Wyoming, where he graduated from Kelly Walsh High in 1973. He enjoyed a brief career as a letter carrier with the US Postal Service in Casper, but quit when his request for time off to attend a chess tournament was denied. One summer during his student years, Steve rode his bicycle from Casper to Los Angeles, proceeded along the coast to San Francisco, and then on to an outdoor chess tournament in the Napa Valley. Steve attended the University of Wyoming, where he met Janell Hanson. They were married in Laramie in 1981.

In 1982 Steve received his Master of Science in mathematics and earned top score in a problem-solving contest among UW math grad students. In 1983 Steve and Janell moved to Powell, where Steve began his career as a math and physics professor at Northwest College. Their son, Adrian, was born in 1984, followed by daughter Kiersten in 1990. Steve was promoted to Associate Professor in 1993, and was always a favorite among the students for his ability, dedication, and interest in teaching each one of them.

Steve was very active in chess, playing in many Wyoming and Montana tournaments. He won the title of Wyoming State Champion in six different years. He also organized and directed several tournaments. Steve consistently held a USCF rating in the high expert class in over-the-board play, and was a USCF rated master in postal chess. Those of us who were paired with Steve knew we were in for a tough game. Among Steve's favorite openings were the Closed Sicilian with White, and the French Defense, Dutch Defense, and Center Counter Game with Black, though he was a student of all phases of the game, especially the endgame.

Several years ago Steve saw the need for better fonts for publishing chess diagrams. He spent many hundreds of hours developing three sets of superior chess fonts, and began marketing them as Alpine Electronics. These fonts have earned a world-



wide reputation for excellence, and are used in many chess books, magazines, and newsletters, including our own Montana Chess News.

Steve went on to develop fonts for many other games as well, including checkers, Othello, go, Japanese and Chinese chess, playing cards, backgammon, dice, dominoes, and Mah Jong. The business continues to be operated by his son, Adrian. For more information, see the classifieds in Chess Life, or visit the Alpine Fonts web site at <http://www.partae.com/>.

Steve had a keen interest in electronics, which led him to design and build one of the

first digital chess clocks, though he did not market his creation. He also designed and built a device that allowed a blind friend with severe cerebellar ataxia to write, communicate, and play a musical instrument. This effort was recognized with a regional award in the 1991 Johns Hopkins National Search for Computing to Assist Persons with Disabilities.

In his younger days Steve enjoyed competing in bicycle races and tennis tournaments. He was an accomplished handyman, and completed many improvements on the family home in Powell. In recent years Steve had taken up art, poetry, and the guitar. He was first and foremost a devoted husband and father, who was known to skip chess tournaments to spend time with his family.

Steve was an exemplary gentleman, with never an unkind word for anyone, even a chess opponent. Those of us who knew him well saw him as a friend without parallel: Warm and generous, honest and unpretentious, happy and easy-going, and possessing a great sense of humor to match his brilliant mind. Everyone fortunate enough to know him will miss him very much.

In addition to his wife and children in Powell, Steve is survived by his parents and brother Paul, all of Casper, and sister Lauri of Duluth, Minnesota. Memorial donations to assist the higher education of Steve's children may be sent to the Steve Smith Educational Fund at First National Bank, 245 E. First St., Powell, WY 82435.

One last look at Hardy-Carpenter

First analyzed in the March issue, the endgame from the Hardy-Carpenter matchup proved a hard nut to crack. Shortly before his untimely death, Steve Smith became interested in the position. He was able to come up with some convincing analysis demonstrating that White should get the win with best play. Here it is:

50... Kc3 51.g4! and then

A) 51...Ra1 52.f4 b8=Q 53.RxQ RxR 54.f5 Kd4 55.f6 Ke5 56.f7 Rf1 57.Kg7 wins.

B) 51...Rf1 52.g5 Rxf2 53.h5 and now we have three routes to consider:

B1) 53...Kc2 54.h6 b1=Q 55.RxQ KxR 56.h7 Rh2 57. Kg7 wins.

B2) 53...Rf1 54.h6 b1=Q 55.RxQ

RxR 56. h7 Rb6+ 57. Kh5 Rb8 g6 wins.
B3) 53...Rf4 54.Rxb2 KxR 55.h6 Kc3 56.h7 Rh4 57.Kg7 wins.



So 51.g4 was the key. Thanks for the help, Steve. We will miss you.

Recent Games

Suits,T (1779) - Fabian,S (1779)
Bird-Larsen [A03]
Montana Open

In this exciting and complex game the usually positional manoeuvring of the Bird-Larsen Opening turns sharply tactical.

1.f4 d5 2.b3 c5 3.e3 Nf6 4.Bb2 Nc6 5.Bb5 e6 6.Bxc6+

This trade gives up the minor exchange but assures White of control of e5 well into the middle game.

6...bxc6 7.Nf3 Ba6 8.Ne5 Rc8 9.Qf3 c4 10.bxc4 Qb6! 11.Bc1 Ne4



12.f5! exf5 13.Qxf5 Rc7 14.0-0 Bc8 15.Qf3 Nf6 16.Nc3 Bd6 17.Qg3?

Better was 17.d4. E.g. 17.d4 Bxe5 18.de5 Ng8 19.cd5 Qc5 20.d6. The text move allows 17...Ng5, blocking access to g7 and attacking the knight, after which White's attack would have fizzled.

17...0-0?

A tactical ploy keeps this from being total disaster for Black, but the exchanges that follow are great for White.

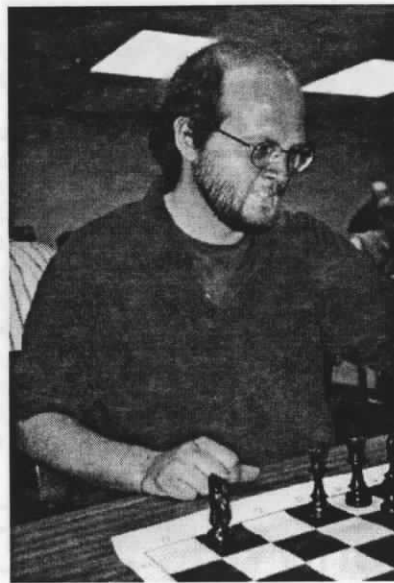
18.Rxf6 Bxe5 19.Qxe5 gxf6



20.Qxf6 dxc4?

Now White misses the crunching follow-up of 21.Na4!, after which Black has to give up the queen to stop Bb2 and mate.

21.Rb1 Qa5 22.Nb5?



Steve Fabian

A time-pressure hallucination. 22.Bb2 first was correct, and after 22...Qf4, White has the pretty resource of 23.Ne4 QxQ 24.NxQ+ Kg7 25.Ne8+, winning the rook.

22...cxb5 23.Bb2 c3 24.Qg5+ Kh8 25.Bxc3+ Rxc3 26.Rxb5

White has perpetual check at his disposal right away, but he also has mating chances if Black missteps. In any case, White is confident that the extra pawns can carry the day in a time-trouble endgame.

26...Qa6 27.Qe7 Rg8 28.Qe5+ Rg7 29.dxc3



The scoresheet ends here. White secured a won position after trading queen and rook, reconnecting and advancing the center pawns in the process. But Suits was recklessly proud, declining draw offers and refusing to claim a draw (based on insufficient losing chances) until his own time ran out. The moral of the story: Pride goeth before a flag fall. 0-1

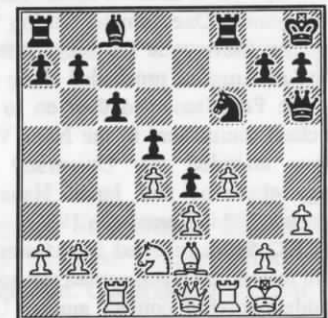
McCourt,D (1600) - Rodriguez,A (1408)
London System [A80]
Montana Open

Augusto snags an upset draw in this last-round game.

1.Nf3 f5 2.d4 d5 3.Bf4 e6 4.e3 Nf6 5.Nbd2 Bd6 6.Be5 Qe7 7.h3 Nbd7 8.Bxd6 Qxd6 9.Be2 c6 10.0-0 0-0 11.c4 Ne4 12.Rc1 Kh8 13.cxd5 exd5 14.Nxe4 fxe4 15.Nd2 Nf6 16.f3 Qg3

Augusto could have won a pawn or forced a draw with 16...Bxh6 17.gxB Qg3+.

17.Qe1 Qg5 18.f4 Qh6



Dan, perhaps eager to hit the road, accepts the draw. 1/2-1/2

Mayer,E (1484) - Cook,K (1375)
French Defense - Advance [C02]
Montana Open

1.e4 e6 2.d4 d5 3.e5 c5 4.Nf3 Nc6 5.c3 h6 6.Be2 Qb6 7.b3 Nge7 8.a4

Eriel has always loved a good pawn push. There are many more to come.

8...Nf5 9.g4 Nfe7 10.dxc5 Qxc5 11.Be3 Qa5 12.b4 Qc7 13.Bd4 Nxd4 14.cxd4 Nc6 15.b5 Bb4+ 16.Kf1 Na5 17.Nbd2 Bxd2 18.Nxd2 Qb6 19.Nf3 a6 20.Rb1 Nc4 21.Nd2 Qxd4 22.Nxc4 Qxd1+ 23.Rxd1 dxc4 24.Bxc4



24...0-0

With the queens off the board, castling is not necessary. Now Black's bishop can't get out.

25.Kc2 axb5 26.Bxb5 b6 27.Rd6 Ba6 28.Rxb6 Bxb5+ 29.axb5 Rab8 30.Rxb8 Rxb8 31.Rb1 Rb6 32.Kd3 Kf8 33.Kc4 Ke8 34.Kc5 Rb8 35.b6 Kd8 36.Kd6 Rb7 37.Kc6 Kc8 38.Ra1 Kb8 39.Ra7 Rxa7 40.bxa7+ Kxa7 41.Kd7 Kb6 42.Ke7 Kc5 43.Kxf7 Kd5 44.f4 g5 45.f5 exf5 46.gxf5 Kxe5 47.f6 Kf5 48.Kg7 h5 49.f7 Kg4 50.f8Q Kh3 51.Qf3+ Kh4 52.Qg3# 1-0

Long,M (1763) - Bailey,B (1560)
French Defense - Advance [C02]
Montana Open

If you play the French Defense, study the following short game or you may be condemned to repeat it.

1.e4 e6 2.d4 d5 3.e5 c5 4.c3 Nc6 5.Nf3 Nge7 6.Bd3 Qb6 7.a3 cxd4 8.cxd4 Nxd4 9.Nxd4 Qxd4 10.Bb5+ 1-0

Hansen,D (1705) - Mayer,E (1484)
Queenside Fianchetto Defense [B00]
Montana Open

1.e4 Nc6 2.Nf3 b6 3.Bc4 e6 4.d4 Bb7 5.Bf4 Nf6 6.Bd3 Na5 7.Nbd2 h6 8.Qe2 g5 9.Bg3 Nh5 10.c3 Bg7 11.Ne5 Nng3 12.hxg3 d6 13.Ng4 Qe7 14.0-0-0 a6 15.Rh5 b5 16.a3 c5 17.dxc5 dxc5 18.f4 c4 19.Bc2



19...0-0-0

The sac on c3 almost works, but not quite: 19...Bxc3?! 20.bxB Qxa3+ 21.Kb1 Qxc3, and even though Black gets three pawns for the bishop, White has plenty of time to go on the offensive beginning with 22.fg5.

20.e5 f5

One pawn push too many for Eriel this time.

21.exf6 Bxf6 22.Rxh6 Rxh6 23.Nxh6 Bd5 24.Ne4 Bg7 25.Ng4 Qb7? [25...gxf4] 26.Nxg5 Qe7 27.Ne3 Qc5 28.Nxd5 Rxd5? 29.Qxe6+ Kb8 30.Qxd5 Qe3+ 31.Kb1

Erickson,R (1709) - Younker,J (1524)
London System - Dutch Setup [D02]
Montana Open

Jeremy had a strong tournament, getting his third win with this game to earn the class C trophy.

1.Nf3 d5 2.d4 f5 3.Bf4 Nf6 4.Nbd2 e6 5.e3 Be7 6.c3 0-0 7.Ne5 Ne4 8.Nxe4 fxe4 9.Qg4 Rf6 10.h4 Nd7 11.h5 Nxe5 12.dxe5?!

The doubled pawn soon becomes a target. 12.Bxe5 looks more solid.

12...Rf5 13.Qe2 Bg5 14.g4 Rf7 15.Bxg5 Qxg5 16.0-0-0 Qxe5 17.Bg2 c6 18.Rdgl Qg5 19.f4 exf3 20.Bxf3 Qf6 21.Rf1 Qg5 22.Bg2 Rxf1+ 23.Rxf1



Now 23...e5 would secure the center and put pressure on g4.

23...Bd7 24.Qf3 Qe7 25.Qg3

Interesting is 25.g5! Rf8, followed by trades. It might give White better drawing chances.

25...e5 26.g5 Rf8 27.Rxf8+ Kxf8 28.h6 g6 29.Bf1 Bf5 30.Kd2 Kf7 31.Bd3 Qe6 32.Qf2 e4 33.Be2 Qe5 34.Kc2 Ke7 35.Kb3? Be6

This attacks g5 and threatens ...d4+. Ron can only choose his poison.

36.Qg2 d4+ 37.c4 Qb5+ 38.Kc2 d3+ 39.Bxd3 exd3+ 40.Kb1 Qxc4 41.b3 Qc2+ 42.Qxc2 dxc2+ 0-1

Loy,J (1887) - Younker,G (1704)
Smith-Morra Gambit [B21]
Montana Open

For a gambit that is viewed skeptically by the masters, the Smith-Morra sure wins a lot of non-master games. Jim uses it here to secure his first Senior Championship.

1.e4 c5 2.d4 cxd4 3.Nf3 Nc6 4.c3 dxc3 5.Nxc3 g6 6.Bc4 Bg7 7.0-0 e6

Either 7...d6 or 7...Nh6 are the book lines. Now White wastes no time in exploiting the holes in Black's position.

8.Bg5



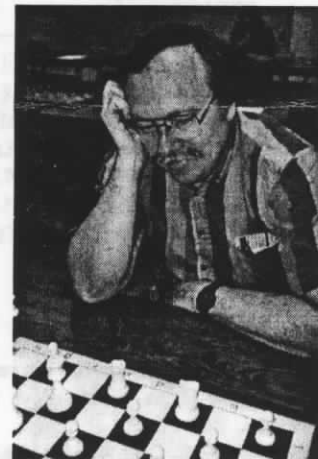
8...Qc7? [8...Nge7] 9.Nb5 Qb6

This lets the knight in. The cramped 9...Qb8 was better.

10.Qd6 f6 11.Nc7+ Kf7 12.Nxa8 Qa5 13.Bd2 Qd8 14.Nc7 Bf8 15.Nxe6?!

Instead, 15.Qg3 hangs on to the piece. Still, the text move does allow White to trade down with a secure advantage intact.

15...dxe6 16.Qxd8 Nxd8 17.Rfd1 Nc6 18.Bb5 Nge7 19.Be3 a6 20.Ba4 h6 21.Nd4 Nxd4 22.Bxd4 g5 23.Bb3 Nc6 24.Rac1 Be7 25.Be3 b5 26.a3 Bb7 27.Rd7 Ba8 28.Be5 h5 29.Bxe7 Nxe7 30.Rec7 Re8 31.f3 a5 32.Bd1 Kf8 33.Be2 f5 34.Bxb5 fxe4 35.Rxe7 Rxe7 36.Rc8+ Kf7 37.Rxa8 Rb7 38.Ba4 Rxb2 39.fxe4 1-0



Jim Loy, Montana's Senior Champion for 1999, looking a little weak on the light squares.

Beyenal,H (1587) - Skovron,J (1927)
Queen's Gambit - Orthodox [D67]
Montana Open

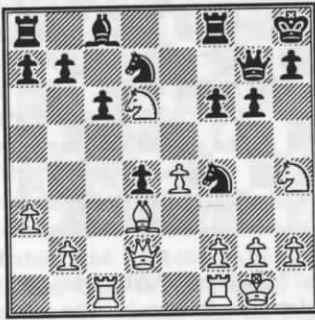
1.d4 d5 2.c4 c6 3.Nc3 Nf6 4.Nf3 e6 5.Bg5 Be7 6.e3 Nbd7 7.Bd3 dxc4 8.Bxc4 Nd5 9.Bxe7 Qxe7 10.0-0 0-0 11.Rc1

The players arrive at the Orthodox Defense by way of a round-about move order. Now ...NxN is book.

11...N7b6 12.Bd3 f6

Attempting to free the bishop with ...e5.

13.Ne4 Nd7 14.a3 e5 15.Ng3 Kh8
16.Nh4 Qf7 17.Ngf5 g6 18.Nd6 Qg7
19.Qe2 exd4 20.e4 Nf4 21.Qd2



21...Nxd3

Jim misses 21...Qh6!, threatening ...QxN or ...Nh6+ to win the queen.

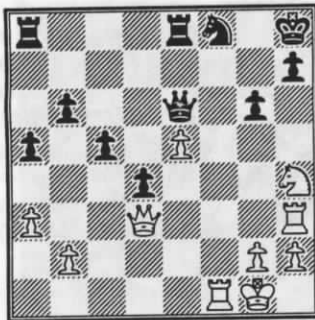
22.Qxd3 e5 23.f4 b6 24.Rf3

Again 24...Qh6! comes into play, with threats of ...QxN and, thanks to the pin on the f-pawn, ...Ne5. Jim, obsessed with that bad bishop the whole game, misses this shot.

24...a5 25.Nxc8 Rfxc8 26.Rg3 Qf7 27.Rh3 Nf8 28.e5 fxe5 29.fxe5 Re8?

29...Qe6 first would save an important tempo.

30.Rf1 Qe6?



The queen needed to stay on the 7th rank. Now the sky falls in as Haluk plays the tactics perfectly.

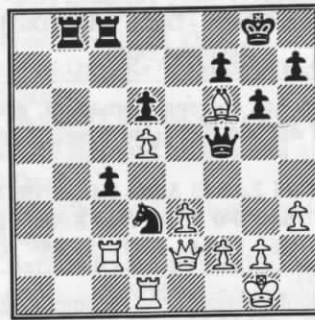
31.Rxf8+! Rxf8 32.Nxg6+ Kg7
33.Rxh7+ Kg8 34.Ne7+ 1-0

Beyenal,H (1587) - Collyer,C (1767)
Benoni [A61]
Montana Open

Both Haluk and Curt finished the tournament undefeated. Haluk had two draws, and Curt three, including this one and one against Suits.

1.d4 e6 2.c4 Nf6 3.Nc3 c5 4.d5 exd5
5.cxd5 d6 6.Nf3 g6 7.Bg5 Bg7 8.e3 0-0
9.Bd3 a6 10.a4 Bg4 11.h3 Bxf3 12.Qxf3
Nbd7 13.0-0 Qc7 14.Rac1 Ne5 15.Qe2
Nxd3 16.Qxd3 Rab8 17.Rfd1 c4 18.Qe2 b5
19.axb5 axb5 20.b3 Nd7 21.bxc4 bxc4
22.Rc2 Rfc8 23.Rdc1 Ne5 24.Ne4 Qd7

25.Nf6+ Bxf6 26.Bxf6 Nd3 27.Rd1 Qf5



28.Qf3 Qxf3 29.gxf3 Kf8 30.e4 Ke8
31.Ra1 Rc7 32.Rc3 Kd7 33.Bd4 Nf4 34.Kf1
Nxb3 35.Be3 h5 36.Ra4 Rbc8 37.Bb6 Rb7
38.Be3 Rbc7

And a few indecipherable moves later the players agreed to a draw. 1/2-1/2

Skovron,J (1927) - Brownlee,K (1747)
London System [D02]
Montana Open

1.Nf3 d5 2.d4 Nc6 3.Bf4 Bg4 4.Nbd2 e6
5.e3 Bd6 6.Bg3 Nge7 7.c4 Nf5 8.Be2 Nng3
9.hxg3 dxc4 10.Nxc4 Bb4+ 11.Kf1 Qf6
12.Nf5 Bxe2+ 13.Kxe2 0-0? 14.Nd7 Qg6
15.Nxf8 Rxf8 16.Qd3 f5 17.a3 Be7 18.Rh3
Rd8 19.Qb3



19...Rxd4?! 20.Rd1?

White can't capture due to ...Nxd4+, but Jim misses the counter-attack, 20.Ne5!, which increases White's advantage.

20...Rxd1 21.Kxd1 a6 22.Qxb7? Qg4+
23.Kd2 Qxc4 24.Qc8+ Nd8 25.Rh1 Qd5+
26.Kc2

Keith accepts the draw with a commanding position. 1/2-1/2

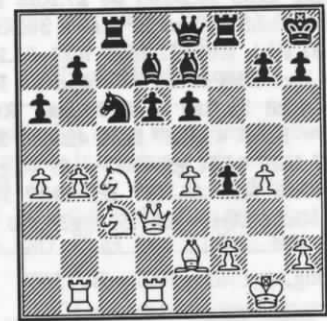
Hansen,D (1705) - Matous,R (1849)
Smith-Morra Gambit [B21]
Montana Open

1.e4 c5 2.d4 cxd4 3.e3 dxc3 4.Nxc3 Nf6
5.Nf3 d6 6.Bc4 e6 7.0-0 Be7 8.Qe2 a6
9.Be3

This is a move Doug has used with some success to prevent the Chicago Defense, in

which Black plays ...Ra7.

9...Nc6 10.a4 0-0 11.Rfd1 Bd7 12.Rab1
Ng4 13.b4 Nxe3 14.Qxe3 Rc8 15.Be2 Qe8
16.g4 Kh8 17.Nd2 f5 18.Nc4 f4 19.Qd3



19...Qg6

Better is 19...f3, then if 20.Bxf3, Black can play 20...Qf7! The invasion ...Ne5 is also looming.

20.Nxd6 Ne5

Still better is 20...f3.

21.Nxc8 Nxd3 22.Nxe7 Qf7 23.Rxd3
Qxe7 24.Rbd1 Be8 25.f3 h5 26.Rd6 hxg4
27.Kg2 gxf3+ 28.Bxf3 Qg5+ 29.Kh1 Bh5
30.Rf1 Bxf3+ 31.Rxf3 Qe5 32.Rd7 Rc8
33.Rdd3 g5 34.h3 Kg7 35.Kg2 Kf6 36.Kf2
b5 37.h4? g4 38.Rd5 gxf3 0-1

Cook,K (1375) - Skarstedt,P (unr.)
Ruy Lopez [C68]
Montan Open

Peter Skarstedt, playing in his first tournament, gets his first win here after snagging a knight in the middle game. Welcome to tournament chess, Peter.

1.e4 e5 2.Nf3 Nc6 3.Bb5 a6 4.Bxc6 dxc6
5.h3

A quieter continuation than the usual 5.d4 or 5.O-O.

5...Bd6 6.0-0 Nf6 7.d3 h6 8.a3 Be6
9.Be3 Qe7 10.d4 exd4 11.Bxd4 Bc5
12.Nc3 0-0-0



13.Bxf6

White gets stuck with two knights against two bishops -- rarely an advantage.

13...Qxf6 14.Qe2 g5 15.Rad1 g4
16.Rxd8+ Rxd8 17.hxg4 Bxg4 18.e5 Qg6

19.Qe4 Bf5 20.Nh4? Bxe4 21.Nxg6 Bxg6
22.g3 Bxc2 23.Rc1 Bg6 [23...Rd2!] 24.Ne2
Bb6 25.Kg2 Be4+ 26.f3 Bd5 27.g4 Re8
28.Nf4 Rxe5 29.Rh1 Be3 30.Kg3 Bxf4+
31.Kxf4 Re6 32.Rh3 b5 33.Rh5 Rf6+
34.Ke5 Rxf3 35.Rxh6 Rf2 36.Rh7 Rxb2
37.Kf6 Rf2+ 38.Kg7 Rf3 39.Kf8 Rg3
40.Rg7 Rxa3 41.g5 Rg3 0-1

Brennan,L (1880) - Polette,D (1529)
Queenside Fianchetto Defense [B00]
Montana Open

Although Dan Polette could not pull off second place (like he did in the last Barto Memorial) he did win two games. Here he tries to close the position, but the State Co-Champion pries it open violently.

1.e4 b6 2.d4 Bb7 3.Bd3 e6 4.Nf3 h6
5.0-0 Nf6 6.Re1 c6 7.a3 d5 8.e5 Nfd7 9.Be3
c5 10.c3 c4 11.Bc2 a6 12.Nbd2 b5



13.Nf1 Qc7 14.Qd2 Nc6 15.Ng3 0-0-0
16.b3 Nb6 17.b4 Nd7 18.a4 Be7 19.axb5
axb5 20.Qe2 Rdf8 21.Nd2 Qd8 22.Nb1 Bg5
23.Na3 Na7? [23...Qb6] 24.Nxc4 dxc4
25.Rxa7 f5 26.f4 Bh4 27.Real Kb8
28.Rxb7+! Kxb7 29.Qf3+ Kc7 30.Ra7+ Kc8
31.Qb7# 1-0

Gentry,D (1126) - Price,D (1365)
Ruy Lopez [C68]
Montana Open

1.e4 e5 2.Nf3 Nc6 3.Bb5 a6 4.Bxc6 dxc6
5.0-0 Bd6 6.h3 Nf6 7.d3 0-0 8.Nc3 Re8
9.Re1 Bd7 10.a3 Qe7 11.Be3 b5 12.b4 c5
13.Bxc5 Bxc5 14.bxc5 Qxc5 15.Ne2 Rad8
16.Nc1 Bc6 17.Nb3 Qb6 18.Qe2 Bb7
19.Qe3 Qc6?



20.Rac1? [20.Na5] 20...Bc8 21.d4? exd4
22.Nfxd4 Qxe4 23.Qxe4 Nxe4 24.Rcd1 Bb7
25.Na5 Ba8 26.Ndc6 Rxd1 27.Rxd1 Nc3
28.Rd3 Ne2+ 29.Kf1 Nf4 30.Rd7 Ne6
31.Nb4 c5 32.Nxa6 c4 33.Nc7 Nxc7
34.Rxc7 Be4 35.a4 bxa4 36.Rxc4 a3 37.Ra4
Bxc2 38.Rxa3 h6 39.Nc4 ½-½

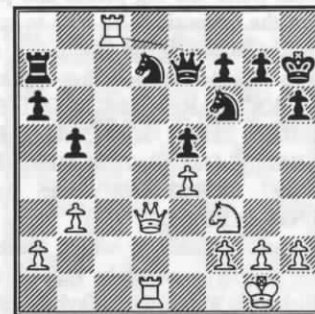


David Gentry, Class E/Unrated winner

Loy, J (1887) - Beyenal, H (1587)
Smith-Morra Gambit [B21]
Montana Open
Notes by Jim Loy

I entered this tournament because I couldn't remember why I had retired from chess. Now I remember. I think that this game was one of the best that I have ever played. Losing it (due to overconfidence) probably helped me win the Methuselah Memorial Award (some call it the Montana Senior Championship). It didn't hurt Haluk, either.

1. e4 c5 2.d4 exd4 3.Nf3 e5
3...a6 or others transpose
4 c3 [4.Nxe5?? Qa5+] 4...dxc3
A bad Morra Gambit. 4...Nc6 is better.
5.Nxc3 Bb4
5...d6 is published
6.Qb3
I like this
6...Bxc3+
Maybe 6...Nc6
7.Qxc3 d6 8.Bc4 h6 9.O-O Nf6 10.Qd3
O-O 11.b3 a6
11...d5 is worth considering
12.Ba3 b5 13.Bd5 Ra7?
Loses. 13...Nxd5 14.Qxd4 Qb6 (or other)
and then not 15.Qxa8 due to 15...Bb7!
14.Bxd6 Nbd7 15.Bxf8 Kxf8 16.Bc6
16.Bxf7 Kxf7 17.Nxe5+ Ke8 18.Nc6
may be easier
16...Qe7 17.Rfd1 Bb7 18.Rac1 Bxc6
19.Rxc6 Kg8 20.Rc8+ Kh7



21.Rdc1

21.Ng5+ Kg6 22.Qf3 is much better. I didn't find the move 22.Qf3; so I reluctantly rejected 21.Ng5+ after a couple of minutes of thought.

21...Nb6 22.R8c6

22.Ng5+ is still OK.

22...Rd7 23.Qe3 Qd8 24.Qxb6??

24.h3 or 24.Re1, but 24.Rxb6? Ng4 is slightly embarrassing.

24...Rd1+ 25.Ne1

At the previous move, I thought that this solved my problems.

25...Rxc1 0-1

Duke,D (1820) - Fabian,S (1779)
English [A22]
Montana Open

Here is the game that decided first place.

1.c4 c6 2.Nc3 Nf6 3.e4 e5 4.Nf3 d6
5.Be2 g6 6.0-0 Bg7 7.d3 Nbd7 8.Rb1 0-0
9.a3 Ne8 10.Qc2 Ndf6 11.b4 Nh5 12.b5 c5
13.Nd5 Be6 14.Ng5 Bxd5 15.cxd5 Nf4
16.Nf3 g5 17.g3 Nxe2+ 18.Qxe2 h6 19.g4
Qd7 20.Nd2 b6 21.Nc4 Nc7 22.a4



Black's play has been conservative. This is not surprising, since all Steve needs is a draw to win the tournament. This next move, totally closing the position, makes his drawing ambitions crystal clear.

22...f6 23.h3 Rab8 24.Qb2 h5 25.f3

Not 25.gh5? because of 25...Qxh3.

25...Bh6 26.Be3 h4 27.Rfc1 Bg7

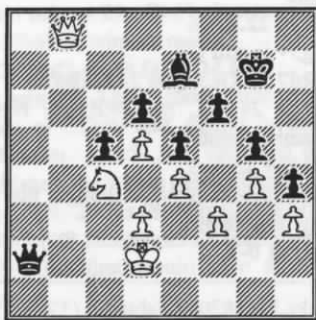
White has a spatial advantage, but it will be hard to convert that to something more concrete. After some drifting, David formu-

lates a plan: Stack the big pieces and push through on the queenside. He opts to stack on the b-file. Stacking on the c-file and eventually pushing d4 was another option.

28.Kg2 Kh7 29.Rc2 Kh6 30.Qc1 Bh8 31.Rcb2 Rfe8 32.Qe1 Kg6 33.Qc3 Bg7 34.Rb3 Bf8 35.Qc1 Bg7 36.R1b2 Bf8 37.Qb1 Bg7 38.Bd2 Bf8 39.a5 bxa5 40.Bxa5 Na8 41.b6 axb6

David must decide now which piece to save. That knight is certainly well-posted, but the bishop is good, too. Maybe neither one is enough in this position, though.

42.Bxb6 Nxb6 43.Rxb6 Rxb6 44.Rxb6 Ra8 45.Rb8 Qa4 46.Rxa8 Qxa8 47.Kf2 Be7 48.Ke2 Kf7 49.Kd2 Qa7 50.Kc3 Qa4 51.Kd2 Kg7 52.Qb8 Qa2+



Here the scoresheets end, and it's hard to see how either side can make any progress. But the clock, Steve's ally earlier in the tournament, becomes his arch enemy in this game. He blunders in time trouble and David goes on to win. 1-0

Skovron,J (1948) - Warner,N (unr.)
Center-Counter Defense [B01]
Triple Header Action

1.e4 d5 2.exd5 Qxd5 3.Nf3 e6 4.Nc3 Qa5 5.Bc4 Nf6 6.0-0 Bd6 7.d4 Qh5 8.Re1 b6 9.Ne4? Nxe4 10.Rxe4 Bb7

A natural move, but Bxb2+ is better.

11.Rh4

It may look ugly, but 11.g4 would have pushed the queen around enough to work.

11...Bxf3! 12.Qxf3 Qxh4



13.Qxa8

Another natural move, but Black's bishop-queen battery is too strong. An interesting alternative is to play for an exchange-down draw after 13.g3 Qxd4 14.Bb5+ c6 15.Bxc6+ 16.Qxc6 Ke7 17.Bg5+f6 18.Qb7+ Bc7 19.Qxc7+.

13...Qxh2+ 14.Kf1 Qh1+ 15.Ke2 Qh5+ 16.f3 0-0 17.Be3 Qh2 18.Rg1 Bf4 19.Bf2 Bg3 20.Qxa7

Misplaces the queen. A huge upset is in the making.

20...Bxf2 21.Kxf2 Qh4+ 22.Ke3?

An attempt to defend the indefensible.

22...Nc6 23.c3? Nxa7 24.g3 Qh2 25.Rf1 Qxg3 26.Bd3 Re8 27.Rh1 g6 28.b4 Qg2 29.Rh4 Qg5+ 30.Rf4 e5 31.dxe5 Rxe5+ 32.Be4 f5 33.a4 fxe4 34.fxe4 Qg3+ 0-1

Hansen,D (1606) - Suits,T (1958)
Caro-Kann [B10]
Triple Header Action

1.e4 c6 2.d3 d5 3.Nd2 e5 4.Ngf3 Bd6 5.Be2 Nf6 6.h3 0-0 7.0-0 h6 8.c3 Be6 9.Qc2 Nbd7 10.Nb3 a5 11.Be3 Qc7 12.c4 a4 13.Nc1 d4 14.Bd2 Rfc8 15.a3 Nc5 16.b4 axb3 17.Nxb3 Nxb3 18.Qxb3



18...Nd7

Better is 18...b4, taking advantage of the pin on the white queen.

19.Rfb1 Ra7 20.a4 Rca8 21.a5 Qc8 22.Qb2 Bc7 23.Ne1 Nc5 24.Bb4 Nd7 25.Qd2? b6? [25...c5] 26.Nc2 c5 27.axb6 Rxa1 28.Nxa1? Bxb6 29.Bxc5 Bxc5 30.Nb3



Scoresheets end here, with Thad a piece up. Unfortunately for him, his time is low

and he misplaces his minor pieces. This allows Doug to create some complications with the passed pawn, and he wins the game by cramming it down Thad's throat. 1-0

Freddie Jay (1209) - Furdell,B (1275)
Bird's [A03]
Triple Header Action

Freddie has taken to playing the Bird's in club, and he is starting to win with it.

1.f4 d5 2.Nf3 Nc6 3.g3 Bf5 4.d3 e6 5.Bg2 h6 6.0-0 Bc5+ 7.d4 Bb6 8.e3 Nb4 9.Na3 Qd7 10.c3 Nc6 11.Bd2 Nf6 12.c4 Bd3



13.cxd5 Bxf1? [13...exd5] 14.dxc6 Qxc6 15.Qxf1 0-0-0 16.Ne5 Qe8 17.Rc1 Qe7 18.Qf3 Nd5 19.Nec4 Nb4? 20.Nxb6+ axb6 21.Bxb4 Qxb4 22.Qxb7+ Kd7 23.Qxc7+ Ke8 24.Bc6+ 1-0

Furdell,B (1275) - Freddie Jay (1209)
English [A20]
Triple Header Action 1999

1.c4 e5 2.g3 d6 3.Bg2 c6 4.e3 Be6 5.b3 g6 6.Bb2 Bg7 7.Ne2 f5 8.Nbc3 Nf6 9.0-0 0-0 10.f4 Nbd7 11.d4 exd4 12.Nxd4 Re8 13.Qd2 Nc5 14.Rae1 Bf7 15.Re2 Nce4 16.Nxe4 Nxe4

A well-posted knight, indeed. White should probably just eliminate it with 17.BxN.

17.Qc2 d5 18.Rd1 Qb6 19.Nf3 Bxb2 20.Qxb2 dxc4 21.bxc4



By now Freddie has accumulated a big lead. 21...Bxc4, driving the Rook off, fol-

lowed by ...Qxe3, would just about put White away.

21...Qxb2 22.Rxb2 Bxc4 23.Rxb7 Bxa2 24.Rdd7 Bd5?

Instead, 24...Rad8 buys a little time. White can't then play 25.Rxh7 owing to 25...Rd1+.

25.Rxa7?

Wrong pawn. With 25.Rxh7 White can clean up.

25...Rxa7 26.Rxa7 c5 27.Rc7 Rb8 28.h3

White is rightfully worried about 28...Rb8+, but 28.Nd2 probably holds the fort better.

28...Nxb3 29.Rxc5 Bf7 30.Ne5 Rb1+?

This invasion leads nowhere. The rook was needed for defensive purposes.

31.Kh2 Ne4 32.Rc8+ Kg7 33.Rc7 Kh8 34.Nxf7+ 1-0

Jensen,M (1861) - Erickson,R (1709)
London System [D05]
1st Summer Open

Mike uses a well-planned skewer on the queen to force resignation here.

1.d4 Nf6 2.Nf3 e6 3.e3 c5 4.Bd3 d5 5.c3 Nc6 6.Nbd2 Qc7 7.0-0 c4 8.Bc2 Bd6 9.e4 e5 10.exd5 Nxd5 11.Nxc4



11...exd4 12.Nxd6+ Qxd6 13.Re1+ Nde7 14.Nxd4 Nxd4 15.cxd4 Be6 16.Bg5 Nd5 17.Ba4+ Kf8 18.Rc1 h6 19.Bh4 f5 20.Qe2 Nf4 21.Qe3 Kf7 22.Bg3 g5 23.Bxf4 gxf4 24.Qe2 Rag8 25.Qh5+ Rg6 26.Rxe6

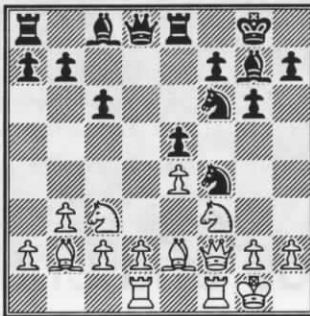


Black resigned in the face of 26...QxR 27.Bb3, winning the queen. 1-0

Suits,T (1958) - Doulas,N (1266)
Bird-Larsen [A02]
Triple Header Action

Nick Doulas, rusty though he may have been, had some good games in the Triple Header. After hanging tough in the opening he shows he is a little out of practice with his middle game tactics.

1.f4 Nf6 2.b3 g6 3.e3 Bg7 4.Bb2 0-0 5.Nf3 d6 6.Be2 Nbd7 7.0-0 Re8 8.Nc3 c6 9.Qe1 e5 10.fxe5 dxe5 11.e4 Nh5 12.Qf2 Nf4 13.Rad1 Nf6

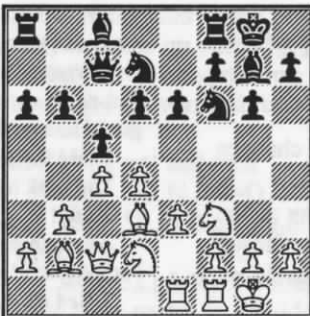


Now the time is ripe for 14.Nxe5. Possible continuations are 14...RxN 15.QxN, winning a pawn; 14...Nxb3+ NxN, guarding the knight and keeping the pawn; and 14...Nh3+ 15.gxN RxN 16.Qe3, also winning a pawn and keeping pressure on the open file. White only finds this tactical blow a few moves later when it reappears.

14.Kh1 Nxe2 15.Qxe2 Bg4 16.h3 Bc8 17.Qf2 Nh5 18.Ne2 Nf4 19.Nxe5 Nxe2? 20.Qxf7+ Kh8 21.Nxb3+ 1-0

Joyce,M (1263) - Nowak,G (2189)
Reti [A05]
Morphy Memorial

1.Nf3 Nf6 2.b3 g6 3.Bb2 Bg7 4.d4 c5 5.e3 0-0 6.Bd3 d6 7.0-0 Nbd7 8.Nbd2 Qc7 9.c4 e6 10.Qc2 b6 11.Rae1 a6



12.Nh4 Bb7 13.e4 cxd4 14.Bxd4 e5 15.Bc3 Nh5 16.g3 Qd8 17.Bb4 Nc5 18.Bxc5 dxc5 19.Be2 Nf4 20.Bd1 Ne6

21.Nhf3 Qc7 22.Qc3 Rad8 23.Bc2 Nd4 24.Bb1 Qc6 25.Qe3 Rde8 26.Qg5 h6 27.Qe3 Kh7 28.Kh1 Bf6 29.h4 Bd8 30.Rg1 Bc7 31.Rg2 Bc8 32.g4 Ne6 33.Qc3 Nf4 34.Rg3 Re7 35.Reg1 Ne2 36.Qe3 Nxb3+ 37.Rxb3 Qf6 38.g5 Qf4 39.Bc2 Qxe3 40.fxe3 h5 41.Nb1 Rd8 42.Nc3 Be6 43.Nd5 Bxd5 44.exd5 e4 45.Rh3 exf3 46.Rxf3 Kg7 47.e4



47...f6??

Greg calls this move his "blunder of the decade."

48.gxf6+ Kf7 49.fxe7+ Kxe7 50.Re3 Be5 51.Kg2 Rf8 52.a4

White should contest the open file with 52.Rf3 instead. With opposite-colored bishops a draw would be the most likely outcome.

52...Rf4 53.Rh3 Bd4 54.Kg3 Rf1 55.Rh2? Be5+ 56.Kg2 Rf4 [Rc1] Time. 0-1

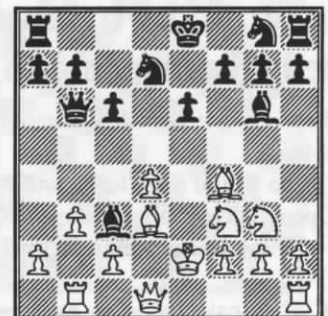
Magande - Suits
Caro-Kann [B18]
Internet Chess Club

This game, played on the internet, features one of the most interesting mates I've ever perpetrated.

1.e4 c6 2.d4 d5 3.Nc3 dxe4 4.Nxe4 Bf5 5.Ng3 Bg6 6.Nf3 Nd7 7.Bf4

This lets Black disrupt the queenside pawn structure and gain time.

7...Qb6 8.b3 e6 9.Bd3 Bb4+ 10.Ke2 Bc3 11.Rb1



11...Bxd4?

Greedy. Continuing a natural develop-

ment with 11...Ngf6 was better.

12.Bxg6 hxc6 13.Qxd4 Qxd4 14.Nxd4 e5 15.Nxc6?

After 15.Bd3 White would keep the edge.

15...exf4 16.Kf3 fxc3 17.Rbe1+ Kf8 18.Na5 gxf2 19.Nxb7 Ngf6 20.c4 Re8 21.Rxe8+ Kxe8 22.g3 Ne5+ 23.Kg2 Nfg4 24.Nd6+ Ke7 25.Nb5 Nd3 26.f3?? Ne3# 0-1



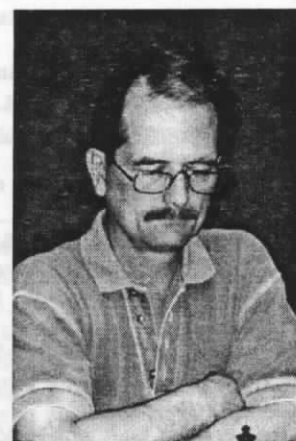
Burney, J (1204) - Younker, G (1704)

[A06]

Montana Open

Gary sacs the exchange for an advanced pawn that eventually gets escorted to the eighth rank.

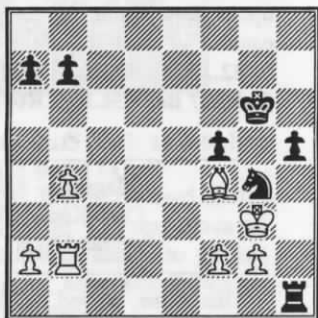
1.Nf3 c5 2.b3 d5 3.e3 Nf6 4.c4 d4 5.exd4 cxd4 6.Bb2 Nc6 7.Qe2 Bg4 8.d3 e5 9.Nbd2 Bd6 10.g3 0-0 11.Bg2 Re8 12.0-0 Qd7 13.Ne4 Nxe4 14.Qxe4 Bf5 15.Qe2 Rad8 16.Nh4 Bh3 17.Rae1 Bb4 18.Bxh3 Qxh3 19.Rd1 Re6 20.a3 Be7 21.Nf3 Rh6 22.Rfe1 Rdd6 23.Qf1 Qg4 24.Qg2 Qf5 25.Re4 Rdf6 26.Nh4 Qd7 27.Bc1 Rxf4 28.Rxf4 Rg6 29.Qh3 Qxh3 30.Rxf3 f5 31.Kh1 Bd6 32.f4 e4 33.b4 e3 34.Re1 Re6 35.Bb2 e2 36.c5 Bc7 37.Kg2 g6 38.b5 Ba5 39.bxc6 bxc6 40.Bxd4 Bxe1 41.Be5 Ba5 42.g4 e1Q 43.gxf5 Qe2+ 0-1



Gary Younker. He double-dog dares Montana players to make the trip to Spokane next year.

Odds and ends

The one that got away



Jim Skovron and Nick Doulas arrived at this position in their Game/15 match-up at the Triple Header. Jim decided to "drive the knight away" with 1.f3?? Nick bought into his thinking and dutifully played 1...Nf6??, eventually losing a tough endgame. When, after the game, the move 1...h4, mate was pointed out to him, Nick took it philosophically.

Changes to the bylaws: Site of State Closed Championship to rotate

The newly-elected MCA Board has approved two changes to the bylaws.

1) The site of the Closed will rotate the same way as the State Open, but on an offset schedule. This year's Closed (along with the Barto Memorial) will be held in Missoula on Sept. 11-12.

2) When calculating an average rating for a Grand Prix event, the method of figuring ratings for unrated players has been changed. From now on the unrated player's performance rating for the tournament will be used.

King him

In a postal checkers game, State Senior Champion Jim Loy of Bozeman recently defeated Jerry Childers, the checkers-by-mail world champion. Congratulations, Jim! Now get back to your chess study.

The other one that got away



Zygmund Mayer and Michael Long reached the above position in a casual game recently. Michael (Black) played ...NxB? and the game was eventually drawn. After the game Michael analyzed the position and came up with what he calls "the best forced win he ever didn't get." Here are his comments.

1...d4 2.Rb3

The rook has to stay on the bishop or ...NxB wins.

2...d3!

Again threatening ...NxB. If now 3.Kf1 NxB 4.gxN RxR. If 3.Kh1 NxB 4.gxN Ra1+ mates in two.

3.Be4 d2 4.Rb1 Ra4 5.Bg6 Rc8 6.Rd1 Rc1 7.Rxd2 Nf3+

And White drops a rook because it's double check. [Actually, it's even better than that. 7...Nd3+ gives mate in two. --Ed.]

The analysis here conveys the beauty of the conversion of positional freedom into a movement of energy that cannot be stopped, and that's the inherent beauty of chess.

A wrap-up for the 1998-1999 tournament season

First, some thanks

As I start my second year as editor of this newsletter, I want to thank the people whose work appeared in MCN the previous year. This past tournament season the pages of MCN have been graced by the contributions of many players, and the variety that their submissions provides makes for a more vital publication.

All MCA members should feel free to send submissions to the editor for inclusion; you don't have to be a GM to have something to say about chess. Although I can't promise to include every submission, as far as I am concerned, the more member participation in the newsletter the better.

Special thanks for last season to the following members who helped with their logistical support and their submission of articles, photos, reports, and annotated games.

Les Brennan, Alex Dawson,
Nick Doulas, Melvin Drake,
Doug Hansen, Michael Long,
Bill McBroom, Dan McCourt,
Sherwood Moore, Greg Nowak.

And last but not least, thanks to all the players (75 of them) whose games (127 of them) appeared in these pages.

—Thad Suits

Ten Qualifiers for State Closed Set

The tournament cycle ended with the Montana Open, so the stage is now set for the State Closed. These ten qualifiers will meet in Missoula on the weekend of Sept. 11-12 to compete for the championship:

Current Seeded Champion

Alex Dawson (*Les Brennan, alternate*)

Grand Prix Qualifiers

Greg Nowak, Thad Suits, Dan McCourt,
Jim Skovron

State Open Qualifiers

David Duke, Haluk Beyenal, James Loy,
Howard Hoene, Romie Carpenter

If any of these players cannot attend, first alternate for Grand Prix qualification is Doug Hansen, and first alternate for the Open is Michael Long.

Those players who did not qualify this year should bear in mind that there will be a satellite tournament — The Barto Memorial — running concurrently with the Closed. Come and root on your favorite player while you compete for your own share of glory.

Montana State Champions, 1998-1999

*Les Brennan
Alex T. Dawson*

Grand Prix Champion

Gregory Nowak

Action Champion

Thad Suits

Quick Champion

Douglas Hansen

Blitz Champion

James Skovron


Postal Champion

Duane Hildenstab

Biggest Upset

*Sam Hardy
422 points*

*Congratulations
from the Montana
Chess Association
to all of these
players.*



Grand	Prix
Final Top 10	
Nowak, G	20.83
Suits, T	16.83
McCourt, D	14.56
Skovron, J	12.81
Hansen, D	12.18
Duke, D.	10.37
Katzl, R	9.73
Beyenal, H	9.34
Dawson, A	8.52
Borchardt, J	8.52

At left are listed the final standings of this season's Grand Prix race. Only a clear first at the Open would have let Suits catch Nowak, whose wins at the Crocus and the January Thaw put him over the top this year.

For comparison, listed here is how the Grand Prix standings *would have looked* this year if we were using the new travel bonus multiplier. In the coming season this multiplier will reward those players who go the extra mile to play in Grand Prix tournaments.

McCourt, D	24.17
Nowak, G	24.14
Suits, T	21.97
Duke, D	17.22
Skovron, J	16.23
Hansen, D	14.00
Katzl, R	9.73
Beyenal, H	9.34
Dawson, A	8.52
Borchardt, J	8.52

Tournament Tables

Montana Open (5/22,23/99)

#	Name	Rtng	Rd 1	Rd 2	Rd 3	Rd 4	Rd 5	Total
1	David A Duke	1820	W13	W22	H---	W10	W2	4.5
2	Steve Fabian	1779	W21	W11	W4	W9	L1	4.0
3	Haluk Beyenal	1587	W5	D6	D7	W14	W8	4.0
4	Thad Suits	1972	W12	W16	L2	D6	W15	3.5
5	James Loy	1887	L3	W21	W23	D11	W18	3.5
6	Curt D Collyer	1767	W25	D3	W15	D4	D7	3.5
7	Keith Brownlee	1747	W31	D8	D3	W13	D6	3.5
8	James J Skovron	1927	W20	D7	D9	W22	L3	3.0
9	Ronald A Matous	1849	W24	W17	D8	L2	H---	3.0
10	Romie G Carpenter	1807	W26	W18	H---	L1	D11	3.0
11	Howard F Hoene	1694	W28	L2	W25	D5	D10	3.0
12	John C Julian	1622	L4	W29	H---	X---	D16	3.0
13	Jeremy Younker	1524	L1	W33	W17	L7	W22	3.0
14	Leslie Brennan	1880	L23	W27	H---	L3	W24	2.5
15	Michael Long	1763	D27	W19	L6	W23	L4	2.5
16	Sherwood Moore	1732	W29	L4	H---	D19	D12	2.5
17	Douglas J Hansen	1705	W34	L9	L13	W25	D20	2.5
18	Gary Younker	1704	W33	L10	H---	W27	L5	2.5
19	Daniel J Mc Court	1600	H---	L15	W31	D16	D21	2.5
20	William Mc Broom	1596	L8	D31	H---	X---	D17	2.5
21	Augusto Rodriguez	1408	L2	L5	W34	W30	D19	2.5
22	Ron Erickson	1709	W32	L1	W24	L8	L13	2.0
23	Brian W Bailey	1560	W14	H---	L5	L15	D27	2.0
24	Dan Polette	1529	L9	W32	L22	W33	L14	2.0
25	Eriel Mayer	1484	L6	W34	L11	L17	W29	2.0
26	James Chester	1452	L10	L28	L32	X---	W33	2.0
27	Jim Burney	1204	D15	L14	W30	L18	D23	2.0
28	Robert Mesaros	unr.	L11	W26	H---	F---	U---	1.5
29	Ken Cook	1375	L16	L12	L33	W31	L25	1.0
30	Don Price	1365	U---	H---	L27	L21	D31	1.0
31	David Gentry	1126	L7	D20	L19	L29	D30	1.0
32	Russell DeTienne	unr.	L22	L24	W26	F---	U---	1.0
33	Peter Skarstedt	unr.	L18	L13	W29	L24	L26	1.0
34	Nick Warner	unr.	L17	L25	L21	F---	U---	0.0

Bitterroot Open (5/1/99)

#	Name	Rd 1	Rd 2	Rd 3	Rd 4	Rd 5	Tot
1	Greg Nowak	W7	B---	W2	H---	W8	4.5
2	Jim McClure	W8	W3	L1	W4	W6	4.0
3	Eric Gilbertson	W9	L2	W8	W5	W4	4.0
4	Dale Gross	D6	W7	W5	L2	L3	2.5
5	Johnny Legan	H---	W6	L4	L3	W7	2.5
6	Kyle Seamons	D4	L5	W9	W8	L2	2.5
7	Carl Jacobs	L1	L4	B---	W9	L5	2.0
8	Rod Nielson	L2	W9	L3	L6	L1	1.0
9	Will Reynolds	L3	L8	L6	L7	U---	0.0

Triple Header — Montana Action Championship (6/26/99)

#	Name	Rtng	Rd 1	Rd 2	Rd 3	Rd 4	Rd 5	Tot
1	Thad Suits	1958	W6	L3	W5	W4	W8	4.0
2	James J Skovron	1948	W8	L4	W6	W3	W7	4.0
3	Douglas J Hansen	1606	W7	W1	W4	L2	W5	4.0
4	Nick Warner	unr.	W5	W2	L3	L1	W6	3.0
5	William J Furdell	1275	L4	W8	L1	W7	L3	2.0
6	Nick J Doulas	1266	L1	W7	L2	W8	L4	2.0
7	Freddie Jay	1209	L3	L6	W8	L5	L2	1.0
8	Melvin P Drake	1235	L2	L5	L7	L6	L1	0.0

Tiebreaks included

Triple Header — Montana Blitz Championship (6/26/99)

#	Name	Rtng	rd1	rd2	rd3	rd4	rd5	rd6	rd7	Tot
1	Skovron	1948	\$7	\$6	\$4	\$5	\$3	\$8	D2	12.5
2	Suits	1958	\$6	\$5	\$8	\$7	W4	\$3	#1	12.5
3	Hansen	1606	W5	\$8	\$7	\$4	L1	L2	\$6	9.0
4	Freddie Jay	1209	W8	\$7	L1	L3	W2	\$6	#5	7.5
5	Douglas	1266	W3	L2	W6	L1	\$8	W7	D4	5.5
6	Warner	unr.	L2	L1	W5	\$8	\$7	L4	L3	5.0
7	Drake	1235	L1	L4	L3	L2	L6	W5	\$8	3.0
8	Furdell	1275	W4	L3	L2	L6	L5	L1	L7	1.0

Note: \$ = Double Win, # = Win and a draw. Tiebreaks included.

Triple Header — Montana Quick Championship (6/27/99)

#	Name	Rtng	Rd 1	Rd 2	Rd 3	Rd 4	Rd 5	Tot
1	Douglas J Hansen	1606	W4	W3	W2	W7	W5	4.0
2	Thad Suits	1958	W5	W7	L1	D3	W4	3.5
3	James J Skovron	1948	W8	L1	W5	D2	W6	3.5
4	Freddie Jay	1209	L1	W8	W7	D6	L2	2.5
5	Nick J Doulas	1266	L2	W6	L3	W8	L1	2.0
6	Nick Warner	unr.	L7	L5	W8	D4	L3	1.5
7	William J Furdell	1275	W6	L2	L4	L1	L8	1.0
8	Melvin P Drake	1235	L3	L4	L6	L5	W7	1.0

Morphy Memorial Open (6/26/99)

#	Name	Rtng	Rd 1	Rd 2	Rd 3	Tot
1	Greg Nowak	2189	W5	W4	W2	4.0
2	Dan McCourt	1605	W6	W3	L1	2.0
3	Rich Hall	1555	W7	L2	W5	2.0
4	Eric Gilbertson	1391	W9	L1	W7	2.0
5	Mike Joyce	1263	L1	W9	L3	1.0
6	Andy Shipp	836	L2	L7	W10	1.0
7	Johnny Legan	808	L3	W6	L4	1.0
8	Jane Locastro	892	U—	U—	W9	1.0
9	Kyle Seamans	unr.	L4	L5	L8	0.0
10	Cindy Swahlen	1117	U—	U—	L6	0.0

Upcoming Events

Membership in USCF and MCA (or other state affiliate) required for all events unless otherwise noted.

September 11& 12.....State Closed Championship

Format: Ten-player invitational, 5 rnd Swiss. **Time Controls:** 30/90, G/60. **Site:** Univ. of MT, Rankin Hall, Room 203. (Not far from Social Sciences Bldg.) **EF:** Free to qualifiers. **Prizes:** Trophy and Championship title to winner. **Rnds:** Sat: 9, 2, 7; Sun 9, 2. **Reg:** 8:00-8:40. **Contact:** Thad Suits, 2015 4th Ave. N. Great Falls, MT 59401. Tel. 453-6160.

September 11 & 12.....John Barto Memorial

(Held in conjunction with the Closed Championship)

Format: Two sections, Open and Under 1400. Format depends on number of entries in each division. **Time Controls:** 30/90, G/30. **Site:** Univ. of MT, Rankin Hall, Room 203. (Not far from Social Sciences Bldg.) **EF:** \$15 if rec'd by 9/8, \$20 after that. **Prizes:** Trophies for 1st and 2nd in each section. **Rnds:** Sat: 9, 2, 7; Sun 9, 2. **Reg:** 8:00-8:40. **Contact:** Dan McCourt, 608 W. Central, Missoula, MT 59801. Tel. 761-0254.

August 14th.....Western Montana Open

Format: 5 rnd unrated Swiss. Membership in MCA encouraged but not required. **Time controls:** Game/30. **Site:** Shack Restaurant, 222 W. Main, Missoula. **EF:** \$10 early, \$14 at the door. Juniors 17 and under \$3 less. **Prizes** (based on 20): 1st-\$30, 2nd-\$25, 3rd-\$20, 4th-\$10. \$5 gift certificate to best Larsen and Andersen Opening. MCA membership for best English. Jnr. prize of \$10 based on 2 or more players. **Reg:** 11:00-11:15. **Rnds:** 11:30, 1, 2:30, 4, 5:30. **Contact:** Gregory Nowak, Hellgate Station, Box 8572, Missoula, MT 59807. **Other:** \$1 rebate for anyone wearing Octopus T-shirt. Aug. 14th is Octopus' birthday.

August 28th.....Rudolph Spielman Memorial

Format: 3 Quads. Membership in MCA encouraged but not required. **Time controls:** Game/60. **Site:** Shack Restaurant, 222 W. Main, Missoula. **EF:** \$7 early, \$10 at the door. Juniors 17 and under \$2 less. **Prizes:** 1st-\$20, 2nd-\$15, 3rd-\$10. **Rnds:** 11:00, 1:15, 3:30. **Contact:** Gregory Nowak, Hellgate Station, Box 8572, Missoula, MT 59807. **Other:** Speed tournament afterwards.

🏰 October 16 & 17.....Chinook Open (Great Falls' Grand Prix Event)

Format: 5 rnd Swiss. **Time Controls:** Game/2. **Site:** University of Great Falls, Classroom Bldg., Room 203. Enter from 23rd St. parking lot. **EF:** \$15 if rec'd by 10/13, \$20 any time after that. **Prizes:** 1st - \$100, \$20 to top in each division. **Reg:** 8:45-9:30. **Rnds:** 10, 2, 7; 9, 1. **Contact:** Thad Suits, 2015 4th Ave. N., Great Falls, MT 59401, Tel. (406) 453-6160. **Other:** Limited housing available on a first-come-first-served basis.

UCCC 1st Summer Open (6/17/99)					
#	Name	Rd 1	Rd 2	Rd 3	Tot
1	Jensen	W3	D2	W4	2.5
2	Moore	B—	D1	W3	2.5
3	Erickson	L1	B—	L2	1.0
4	McCourt, D.	U—	U—	L1	0.0

Look for games from the Midsummer Open in the September issue of MCN.

The Polgar Corner

The following position is taken from the encyclopedia *Chess* by László Polgár. How quickly can you find this mate in two?

The answer is on the back page.



White to move and mate in 2

Thad Suits
2015 4th Ave N.
Great Falls, MT 59401



20 and 10 years ago in MCN

July, 1979

Yasser Seirawan, a nineteen-year-old IM from Seattle, visited Montana to play in the State Open and to conduct a 24-board simul. Seirawan, rated 2495 at the time, swept the Open with a score of 6-0, and went 23-1 in the simul. His only loss in the latter event came against none other than current co-champion **Alex Dawson**.

July, 1989

The MCA established two new award categories: Biggest upset of the year and greatest rating gain of the year.

Romie Carpenter won the Montana Open with a score of 4½-½. **Bill Lynch**, **Mike Jensen**, and **Jim Loy** tied for second place with 4-1.

Ron Matous gained 77 rating points on his way to winning the Wyoming State Championship.

Answer to "What's the Cruncher?"

From Gurtoui-Nowak, 1998 USA-Latvia Postal Match. The Octopus won a pawn and a strong initiative with 1...Ng4+! If 2.fxN, then 2...Qf6+ and 3...QxR follow, so White retreated. Play continued 2.Kg1 Nxe3, and White resigned shortly.

Answer to "The Polgar Corner"

1.Nb6+ then 1...Kb8 2.Rd8++ or 1....cxN 2.c7++. In this second line, if you thought 2.Rd8+ would do it, you missed the saving move 2...Bb8