



# MONTANA

## CHESS NEWS

Volume 24, Issue 5 — December, 1998

### *In this issue:*

- McCourt and Suits Share First at Chinook Open**
- Octopus Takes Turkey Open**
- Flathead Championship and More — by Greg Nowak**
- Special by Alex Dawson:* **Slaying the Smith-Morra Gambit**
- Annual MCA Directory**
- An MCA Player Profile: David Duke**
- Proposals from Michael Long**

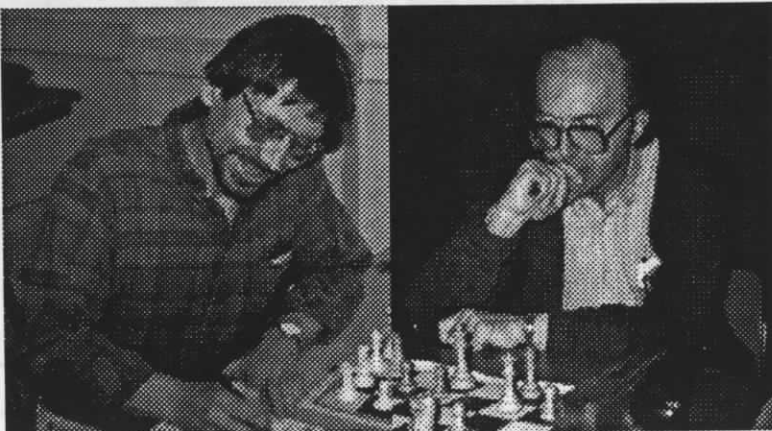
## Chinook Open report

Atoning for their disappointing showings at the State Championship last September, Thad Suits and Dan McCourt went 4-1 to tie for first place in this year's Chinook Open in Great Falls. Owing to a late start from Missoula that morning, McCourt almost didn't even get to play in round one, but fortunately for him the bye player for that round had not left the tournament site and jumped at the chance to play.

For his part, Suits found cause for both satisfaction and self-recrimination. The satisfaction came from seeing his newly learned opening system — the Bird-Larsen — score two fun victories in its tournament debut. The self-recrimination came at the end of the tournament when, forgetting that McCourt was in contention, and thinking that a half point would secure clear first place, he played for the draw against Ron Matous.

In spite of the \$100 top prize, this was, at ten players, the smallest Chinook Open in memory. Besides Dan, Ron Matous was the only other out of town participant. Ron's last round draw put the title just out of his reach, and he finished tied with Jim Skovron for 3rd-4th.

The division two prize was split three ways. Thanks to their two points each, Bill Furdell, Nick Doulas, and Augusto Rodriguez each went home \$6.67 richer.



Dan McCourt and Greg Nowak

## Nowak wins Turkey Open

—by Sherwood Moore

Seventeen players and two housemen played in the Turkey Open, and this year they were *ready to rumble!* Out of 34 games only three were drawn.

Greg Nowak had 3.5 points for a clear win of the \$100 first place prize. Steve Fabian of Richland, Washington, was second on tiebreaks, beating out Gary Younker of Spokane, who won the prize for best under 1800. The two of them split \$70 in prizes. Best under 1600 was split between David Griffin, from Coeur d'Alene, Idaho, and Griff Bye of Kevin, Montana. Augusto Rodriguez of Great Falls won the best under 1400 prize.

Of special note was the return to chess of James Chester, who has been absent from the game for eighteen years. His return proved the rumors of his demise to be premature.

Dave Hofland, another player from Kevin, gave James a hearty welcome back in the form of a 248 point upset to win the prize for biggest upset.

Thanks go to Bill McBroom for his help in setting up on Saturday, and to Dan McCourt and Gary Younker for their help in cleaning up.

## Around the state

### A message from the President

The Governor's Cup tournament, held each fall in South Dakota, is a prestigious event, to which each state champion is invited. Its timing is awkward for us, though, since invitations for it go out typically just before we crown our own new champion. The question then becomes, which champion is entitled to an invitation — the outgoing champ or the incoming one? This is an issue I would like to see the membership address before the next State Closed.

Two years ago we sent Jim Skovron, our outgoing champion to the tournament, so precedent suggests that we give the nod to the previous year's champion in future Governor's Cup tournaments. This is logistically simpler, too, given the timing of the invitations.

This is probably something that belongs in the bylaws, since the Governor's Cup is gaining in prestige with each year.

—Doug Hansen

### Our man in Helena

Ron Erickson won his race for a seat in the state House of Representatives. Since he never could have done it without the support of the powerful Montana chess lobby, we can demand payback from him

now in the form of favorable legislation. Let's change the state flag to a chessboard. How about a tax break for middle-rating chess players? Personally, I would like to see the next state budget include big money for construction of spacious tournament halls throughout Montana. Get going on this, will you, Ron? Remember, you can't afford to alienate your core constituency.

### A Proposal from Greg Nowak

Greg Nowak wants to try again with an idea which he believes would make seeding for the State Championship more reasonable, even though he admits the idea is self-serving. Greg thinks it is strange not to have the highest rated player in the State (him) qualify for the Closed automatically. He would like to see that changed. Two years ago he floated a similar idea which was defeated at the annual business meeting.

With the exception of the previous year's champion, current bylaws require a player to earn the right to compete in the Closed through strong play in the State Open or on the Grand Prix circuit. What do you think?

### Cyber tournament, anyone?

Recently several players in Missoula, Great Falls, and Helena, have put out feelers for getting some city versus city tournaments going over the Internet. Alex Dawson of Helena was even hoping to get a connection set up at Helena's January Thaw tournament (see *Upcoming Events*) for demonstration purposes.

This sounds like a fun way for some of our players to be dragged, kicking and screaming, into the 20th century, just as we are about to leave it. Any technology that can bring chess players closer together can't be all bad.

If you have any suggestions for making this idea a reality, write the Newsletter.

### Corrections to the last issue

In the game score Zedekar-McBroom the names were reversed.

An ambiguous scoresheet led me to mis-transcribe two moves near the end of the Stubberud-Mayer game. 37.Nxe6 and 39.Nf4 were White's actual moves, so the final diagram and its analysis were invalid.

Lastly, in the game Karpov-Suits, Karpov was incorrectly listed as the winner.

The editor regrets these errors and assures the readership that quality control measures have been implemented implemented.

## A Crushing Attack

One of my favorite chess anecdotes comes from Dennis Petrak, who tells of a game he once had with Ron Erickson. It seems that the two of them were in what appeared to be a harmless middle-game position with Dennis on the move. Ron was in his customary deep-think pose, leaning back in his chair with both feet propped up on the table and a near-empty Coke can in one hand.

Then Dennis made his move -- the start of a sharp and irrefutable piece-winning combination out of nowhere. As the import of this move sank in, a strange noise broke the silence of the tournament hall: The unmistakable sound of a near-empty Coke can being slowly crushed.

Did you find (or miss) a subtly sharp move in one of your games? If so, send it to the editor and ask

### What's the Cruncher?

White has just captured a pawn on f5 to equalize. But has he equalized? The answer is on the back page.



Black to move and crunch.

### MCA Board Members (1998-1999)

Doug Hansen - President (761-4517)

Michael Jensen - Vice President (721-0131)

Thad Suits - Secretary/Treasurer (453-6160)

Patrick McDonald - Eastern V.P. (652-7753)

Daniel McCourt - Western V.P. (721-0254)

Let them know about your ideas, complaints, suggestions, and praise.

Montana Chess News is published by the Montana Chess Association, an affiliate of the U. S. Chess Federation. Subscription and membership in the MCA is \$9/yr regular, \$5/yr junior.

Editor - Thad Suits, 2015 4th Ave N.

Great Falls, MT 59401

(406) 453-6160 E-mail: suits@nitco.net

All submissions are welcome, including photos. Articles by E-mail or on a PC-formatted diskette are especially appreciated. Please use either ASCII text or Microsoft Works, Publisher or Lotus format.

### Revised Publishing Schedule:

Issue 1 - Mar. 1, Issue 2 (Special for the Open) - May 10, Issue 3 - July 31, Issue 4 - Sept. 25, Issue 5 - Dec. 8. Deadline for most submissions is ten days before the publication date.



# Slaying the Smith-Morra Gambit

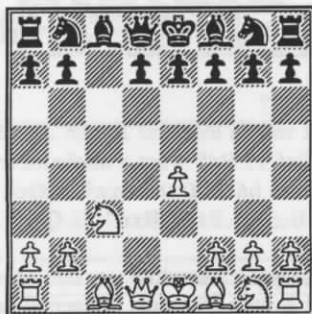
A look at the Chicago Defense —by Alex Dawson



This article is for those in Montana who play the Sicilian. First, congratulations on choosing a fighting defense instead of a passive, cramped one such as the French, Caro-Kann, Pirc, Philidor's, etc. You are a true battlelord! (If you have a fierce dragon chained inside your castle walls, this knight offers his allegiance, his strength, his muscle, even his blood and the heart that pumps it.)

Now, what to do about those opponents that refuse to exchange blows on the field of honor and instead offer the Smith-Morra Gambit?

1.e4 c5 2.d4 cxd4 3.c3!? dxc3 4.Nxc3



Well, of course the best way of handling any gambit is to:

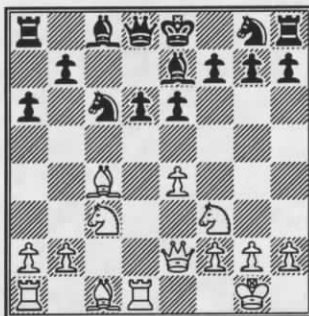
- Be somewhat familiar with it.
- Accept everything they offer.
- Know the basic methods of good defense (i.e. trading pieces, giving back the material for the better position, counter-attacking in the center, etc.)
- And most important, stay cool and keep your wits about you.

You will have to suffer for a number of moves, but once you untie the knots in your position, that extra material will let you cruise into the endgame with the upper hand.

Just remember that all gambits are unsound, except maybe the Queen's Gambit, and I'm not too sure about that one.

Consider the following line:

4...Nc6! 5. Nf3 d6 6. Bc4 e6 7. 0-0 Be7 8.Qe2 a6 9. Rd1



A close look at the diagram will show that White's main trump is the pressure of his rook on the d-file. This prevents Black from developing his king knight to f6, as White will play e5 with good effect since the pawn on d6 is pinned. And unless Black can tuck his king away...well, you know *that* story.

There wouldn't be a problem if Black's queen could move off the file, but where? The usual method has been Qc7 and after Rac1, to find shelter at b8. After ...e5 Black then protects the d-pawn against a routine attack from a bishop on f4. He will eventually castle short, play his king knight to e8, work in f5 and go on the offensive.

All well and good. But if you're the aggressive type, if you like Godfather's pizza, if you can't wait to "play a little tune on your violin" for those meatballs at the next St. Valentine's Day Open, then try the Chicago Defense!

9... b5 10.Bb3 Ra7! 11.Be3 Rd7



This rook completely neutralizes White's pressure on the d-file. Percentage-wise, this variation has scored better than any other, though it is not played too often.

The drawback is that Black is terribly weak on the queenside. White must find play on that wing or watch Black get the king get to safety and play ...d5 with a terrific game. From this key position White has several options:

- A) 12.a4
- B) 12.Na4
- C) 12.Nxb5!
- D) 12.Rac1
- E) 12.e5

### A) 12.a4

White doesn't get much with this.

12...b5 13.Na2

If 13.Nb1 Na5 14.Bc2 Bf6!

13...Nf6 14.Nd4 Nxd4 15.Bxd4 e5 16.Be3 d5 17.exd5 Nxd5 18.Bc5 Bxc5 19.Qxe5+ Qe7 20.Rxd5 Rxd5 21.Qxd5 Bb7



And Black has a small edge.

### B) 12.Na4

Threatening 13. Bb6.

12...bxa4 13.Bxa4 Bb7 14.Rac1 Qa8 15.Nd4



15...Nb8! 16.Bxd7+ Nbx7 17.f3 d5  
And Black has a fine game.

(See Smith-Morra on page 12)

## MCA player profile: David Duke

David Duke, originally from Houston, Texas, came to Montana in 1985 as a wood-pusher. Sorry, make that woodworker. After a while he realized he wanted to get away from purely physical labor, so he decided to go to law school at the University of Montana. He graduated in 1993, and since 1996 has had his own practice in Billings.

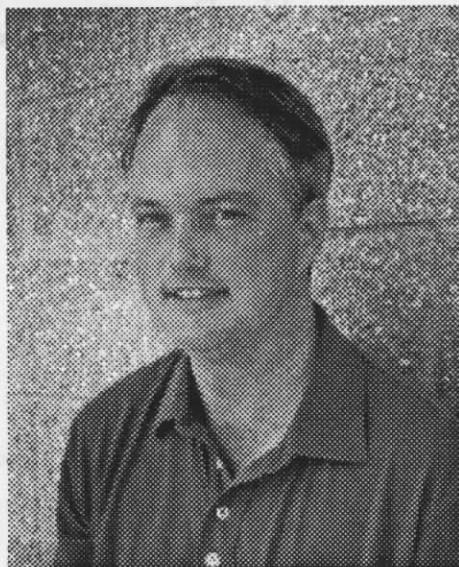
David was the attorney on a case of great notoriety recently, representing one of the defendants in the first set of "Freemen" trials. He found this case especially challenging and satisfying. Challenging because his client refused ever to meet with him before the trial; satisfying because he believes the legal system worked the way it should. His client got a fair trial and was found innocent on one of the two charges David defended him against.

When David was five his father taught him how to play chess. (Now David passes on the torch by teaching chess once a week at the Billings YMCA.) Those early games against his father were copycat openings (1.P-K4 P-K4 2.P-Q4 P-Q4 3.PxQP PxQP 4.QxP QxP, etc.) The Sicilian and its white counterpart, the English Opening are his favorites.

Recently David has returned to his first love — music. He had studied piano and guitar in earnest as an undergraduate at North Texas State, and now takes pleasure in sharing his music-making with some musician pals as well as with his family.

David and his wife, Roxanne, have four children, ranging in age from 8 up to "14, going on 21." They also have a couple of cats which presumably supply David with fresh guitar strings as needed.

The featured game for this profile is from the State Closed Championship. David beat Thad Suits in round one with his solid English Opening play.



"I have a lot of respect for our legal system after seeing the Freeman come into trial and get a fair chance before a Montana jury."

— David Duke

David Duke - Thad Suits  
English Opening - Four Knights [A29]  
1998 Montana Closed - 9/12/98  
*Notes by Suits*

1.c4 e5 2.Nc3 Nf6 3.Nf3 Nc6 4.g3 d5  
5.cxd5 Nxd5 6.Bg2 Nb6 7.0-0 Bg4 8.d3  
Be7 9.a3 a5 10.Be3 Ra6?!



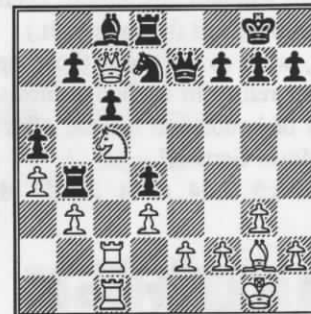
10... 0-0 is better here, but I don't much care for Black's position anyway. I had de-

ceded at move 7 to avoid a line we had played before (7... Bf5) even though I won that game. That decision quickly got me into hot water.

11.Rc1 0-0 12.Nb5 Bf6 13.Nd2 Qd7  
14.Ne4 Be7 15.Bc5 Na8

15... Nd5 is more active.

16.Bxe7 Qxe7 17.Nc5 Rb6 18.a4 Nd4  
19.Nxd4 exd4 20.Rc2 c6 21.Qd2 Rb4  
22.Qf4 Bc8 23.Rfc1 Nb6 24.b3 Rd8  
25.Qb8 Nd7 26.Qc7



26...Kf8?

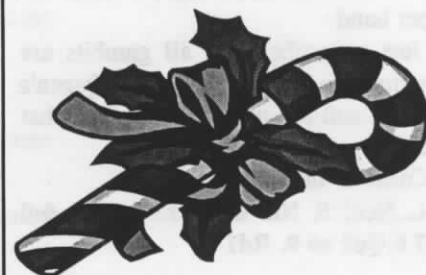
A fast way to lose, but 26...b6 27.Ne4 c5  
28.Nd6 Ba6 29.Bd5 is not a whole lot better.

27.Qxa5 b6 28.Qxb4 bxc5 29.Qc4 Bb7  
30.Bh3 Bc8 31.Bxd7 Rxd7 32.Qxc5 Rd6  
33.Qh5

This may not allow me any real counterplay, but it does allow me to keep alive the fantasy of counterplay. I was planning to resign on almost any other move.

33...Rh6 34.Qf3 Bb7 35.Qe4 Qd7 36.Rc5  
Qh3 37.Qg2 Qe6 38.R5c4 Qxe2 39.Rxd4  
Qb2 40.Rcc4 Re6 41.Qf3 Re1+ 42.Kg2  
Qb1 43.Rd8+ Ke7 44.Rcd4 Rg1+ 45.Kh3  
Qf1+ 46.Kh4 g5+ 47.Kg4 h5+ 48.Kxh5  
resigns 1-0 ♚

Merry Christmas  
Happy New Year  
Whatever....



## A Report on the Bitterroot, Flathead, and Northern Rockies Championships — by Greg Nowak

### **Bitterroot Championship**

On November 7, thirteen chess warriors gathered at the Morning Glory Coffee House in Hamilton for a lively afternoon of Game/25 chess. The field was nicely balanced with eight adults and five youth. The top four finishers were Hall and I, with 4-1, followed by Eric Gilbertson and Dale Gross with 3½-1½ each. Ten-year old Johnny Legan of Corvallis and Justin Burnham of Hamilton tied for first in the youth category with three points. Legan wins the youth prizes quite often, and went to the California youth chess camp with master Snyder.

Six cities were represented: Missoula (3 players), Hamilton (5), Helena (2) and Stevensville, Plains, and Corvallis with one player each.

The only upset to speak of was against me. Playing against Dale Gross I was a mental chess magician of sorts. In a matter of seconds I launched into a combo which I imagined was mate in two. I sacrificed a knight with check, thinking that in the process I had cleared the way for my queen. To my horror there was this black knight on on QB3 blocking her path that my mind had made disappear. Eureka! All of a sudden I am a knight down. After considerable hesitation Dale accepted my immediate offer of a draw. We played it out for fun and he won.

The site was a lovely Victorian style coffee house on the historic register, and the food was delicious.

### **E-mail Addresses wanted**

Brian Bailey wants to start a list-serve of MCA member E-mail addresses. This could be a valuable source for spreading the word about upcoming tournaments and other chess news.

For it to work he needs as many MCA member E-mail addresses as he can get. Please send yours (by E-mail, of course!) to Brian at:

shrike.montana@montana.campuscw.net

### **Flathead Championship**

The Third Annual Flathead Chess Championship was again held at the popular Sunflower Bakery in Polson on October 17. I won it for the third straight time.

Missoula sent four players, three of them ranked in the top four, but Bob Leader of Plains played strong chess and finished a clear second place with 4-1, following a draw against me.

A four-way tie for third through sixth place included Eric Gilbertson, Dale Gross, Howard Cumme, and his son Ron.

Fifteen year old Ron also took the youth prize out of six youth participants (under 17), with John Fairweather getting second place. John, playing in his first tournament, pulled off a couple of surprises, including a stalemate draw after getting five pieces down, and a four-move checkmate.

As in years past this event was sponsored by ten generous area businesses. Special thanks to Todd and Carmine Mowbray for their help.

### **Northern Rockies Championship**

Last Sept. 26th the Octopus devoured another one, going 4½-½ in what turned out to be a "beginner friendly" tournament. Sixteen valiant competitors met at the Shack restaurant in Missoula. I was the heavy favorite here, but Dan McCourt made it close, coming in 2nd with 4-1. Dan also had the game of the tourney against the always-dangerous Hans Anderson.

Hans, with Rich Hall and Bob Leader, tied for third with 3½ points each.

Johnny Legan, age 11, won the youth prize (as usual) with 3 points.

The tournament featured prizes for best opening in several categories. Dan McCourt won for best Andersen Opening (a.k.a. "The Mouse" — 1.P-QR3), Rich Hall had the best King's Gambit, and Ben Andersen had a great Leningrad Bird against Hall. □

## Long wins Hardee's Classic —by Michael Long

Michael Long went 4-0 to win the Hardee's Classic in Livingston on Nov. 15. Jan Johansson was second with 3-1, his only loss coming against Eriel Mayer. It was a one-day tournament, four rounds at game/60 speed. Everyone loved the format and the playing site.

Below is the game that drew the most onlookers. This was one dynamo of a French.

Long, M - Hoene, H  
French Defense [C02]  
Hardee's Open (Notes by Long)

1.e4 e6 2.d4 d5 3.e5 Bd7 4.a3 c5 5.c3 Qb6 6.Nf3 Nc6 7.Be2 0-0-0

Howard's game plan is to give a piece for two pawns, lock up the queenside with a pawn majority, and then go after White's fragile center pawns.

8.b4 c4 9.a4 Nxb4 10.cxb4 Bxb4+ 11.Bd2 a5 12.Nc3 Ne7 13.Na2 Nc6 14.Bxb4 axb4 15.0-0 f6 16.exf6 gxf6 17.Qd2 b3

If 17...c3 then 18.Qd1 and neither pawn can be pushed for the moment.

18.Nc3 Nb4 19.Rfb1 Qd6 20.Bd1

The black knight cannot be allowed to drop in for a visit at c2.

20...e5 21.Bxb3 cxb3

White opens the door to the black king's home.

22.Rxb3 e4 23.Ne1 Nc6 24.Nb5 Qe7 25.Qf4 Be6 26.a5 Kd7 27.a6 bxa6 28.Rxa6 Rc8 29.Na7 Nxd4 30.Rb7+ Kd8

Now 30.RxQ is followed by 30...Ne2+, winning White's queen, so—

31.Rd6+ Bd7 32.Rdxd7+ Qxd7 33.Qxf6+

This wins on the spot.

33...Ke8 34.Qxh8+ Ke7 35.Qxh7+ Kf6 36.Qxd7 Rc1

You have to give Howard credit — a mate in one would help his game a lot.

37.Qf7+ Kg5 38.h4+ Kg4 39.Qg7+ Kxh4 40.Qxd4 Rxe1+ 41.Kh2 Rc1 42.Rg7 Rc4 43.Qe3 Rc2 44.Qh3#

Maybe not a category 15 game, but a real crowd-pleaser and fun to play.

# Recent Games

Suits,T (2015) - Skovron,J (1933)  
Bird-Larsen - Symmetrical [A02]  
1998 Chinook Open

1.f4 f5 2.b3 Nf6 3.Bb2 d6 4.e3 Be6  
5.Bd3 Nbd7 6.c4 g6 7.Nf3 c6 8.Nc3 Bg7  
9.0-0 Qc7

The queen doesn't seem to stand well on this square, but Jim wants to castle queenside. Castling kingside makes more sense.

10.Rc1 0-0-0 11.Bb1

Better here is 11.Nd5 BxN 12.cxB c5 13.b4 with pressure on the misplaced queen.

11...Rhe8 12.d4 Bg8 13.Qd2 e5



At first glance this natural move appears to equalize, but the strong reply which White misses is 14.fe5 de5 15.Nb5! This threatens to open the c-file to White's advantage, or, if Black retreats the queen with 15...Qb8, to get a great attack with 16.Qa5.

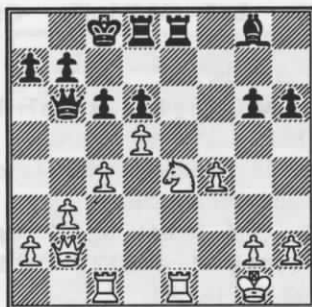
14.d5 Nc5

14...e4 is better, closing things up.

15.Rfe1 Nce4 16.Nxe4 Nxe4 17.Bxe4 fxe4 18.Ng5 h6?

18...ef4 was required, although even then Black's pawn is probably too far advanced for safety.

19.Nxe4 exf4 20.exf4 Bxb2 21.Qxb2 Qb6+?



22.c5! dxc5 23.Nd6+ Kd7 24.Nxe8 Rxe8 25.Qg7+ 1-0

Rodriguez,A (1327) - McCourt,D (1635)  
Bishop's Opening [C24]  
1998 Chinook Open

1.e4 e5 2.Bc4 Nf6 3.d3 c6 4.Nf3 Qc7  
5.Bg5 Be7 6.Nbd2 h6 7.Bh4 d6 8.Bb3 Bg4  
9.Nc4 Nbd7 10.c3 Nc5 11.Bc2 Ne6 12.Ne3  
Bh5 13.Nf5 Bd8 14.Bb3 b5 15.h3 a5 16.a4  
g5 17.Bg3 Rh7 18.Bh2 Nd7



19.d4

19.ab5 cb5 20.Bd5 seems good here.

19...Bf6

Now Augusto misses 20.d5! cd5 21.Qxd5 with threats at d6 and b5. Even with the text move, though, White stands better.

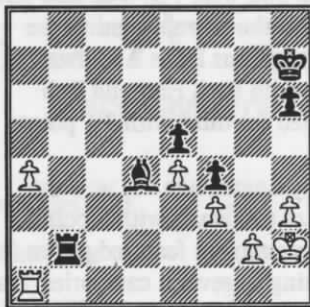
20.0-0 Rd8 21.Re1 Nf4 22.Bxf4 gxf4 23.Qd3 b4 24.dxe5 Nxe5 25.Nxe5 dxe5

With White's dark bishop gone, probably 25...Bxe5 is better since it allows the bishop more scope.

26.Qc2 bxc3 27.Qxc3 Bg6 28.Rac1 Bxf5 29.Qxc6+?

Augusto gets cute here and sees a great game turn bad.

29...Qxc6 30.Rxc6 Be6 31.Bxe6 fxe6 32.Rxe6+ Kf7 33.Ra6 Rd2 34.Rxa5 Rxb2 35.Ra7+ Kg6 36.Rxh7 Kxh7 37.Ra1 Bh4 38.f3 Bf2+ 39.Kh2 Bd4



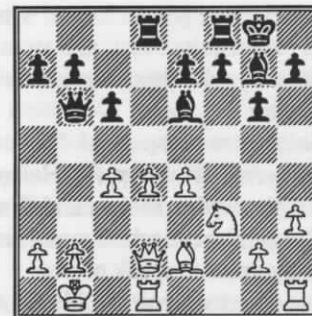
40.Ra2? RxB 0-1

Time was starting to get short, but Black should not have much trouble winning even without this blunder.

Hansen,D (1641) - Suits,T (2015)  
Caro-Kann - King's Indian [B10]  
1998 Chinook Open

1.e4 c6 2.d3 d5 3.Nd2 g6 4.Ngf3 dxe4  
Premature. After the recapture White's queen bishop threatens to go to h6 and interfere with Black's castling.

5.Nxe4 Bg7 6.c3 Nd7 7.Be3 Ngf6 8.Be2 Nd5 9.Qd2 Nxe3 10.fxe3 Nf6 11.Nxf6+ Bxf6 12.e4 Bg7 13.0-0-0 Qa5 14.Kb1 0-0 15.d4 Be6 16.c4 Qb6 17.h3 Rad8



18.c5 Qc7 19.Qe3 h6 20.g4 Qa5 21.a3 Rd7

21...b6, with play on the queenside, was another possibility.

22.Rd2 Rfd8 23.b4 Qc7 24.e5?!

24.d5 instead looks playable here.

24...Bd5 25.Rf1 e6 26.g5 h5 27.h4?



This loses to a tactical shot. The distasteful retreat 27.Ne1 was better.

27...Bxf3! 28.Rxf3 Bxe5 29.Rf6 Rxd4 30.Rd3 Qd7

Although this keeps the advantage and avoids cheapshot mates in the corner, 30.RxR was simpler.

31.Qxe5 Rxd3 32.Bxh5 Rd5

Missing two different paths to mate in 8, beginning with either 32...Rd1+ or Rb3+.

33.Qe4 Rd4 34.Rxg6+ fxg6 0-1

Matous,R (1983) - McCourt,D (1635)  
 Colle [D02]  
 1998 Chinook Open

Here is Dan's only loss in the tournament.

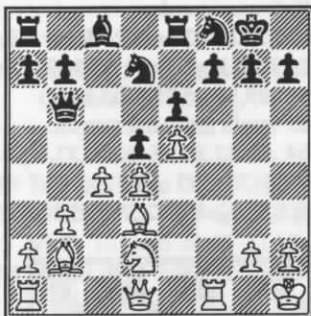
1.d4 d5 2.Nf3 c5 3.e3 e6 4.b3 Nf6  
 5.Bd3 Bd6 6.Bb2 Nbd7 7.0-0 0-0 8.Nbd2  
 Re8 9.Ne5 Nf8 10.f4 N6d7

10...b6 seems like a better plan here.

11.c4 Qb6 12.Kh1 cxd4 13.exd4 Bxe5

This opens lines for attack unnecessarily.  
 Bidding time with something like 13...Qa5  
 would be better. Now f7 quickly becomes  
 an indefensible target.

14.fxe5



14...Ng6 15.Qf3 f6 16.cxd5 exd5  
 17.Qxd5+ Kh8 18.Nc4 Qe6 19.Qxe6 Rxe6  
 20.d5 Re7 21.Ba3 Re8 22.e6 Nde5  
 23.Bxg6 hxg6 24.Nxe5 fxe5 25.Rae1 Bxe6  
 26.dxe6 Rxe6 27.Re4 Kg8 28.Bb2 Ra6  
 29.a4 Rb6 30.b4 Re8 31.Rfe1 a5 32.b5 1-0

Matous,R (1983) - Skovron,J (1933)  
 Queen Pawn Game [A40]  
 1998 Chinook Open

This third-round game is an excellent  
 illustration of the combined effects of weak  
 pawns and weak coffee.

1.d4 c6 2.Nf3 g6 3.e4 Bg7 4.c3 d6  
 5.Bc4 Nf6 6.Nbd2 0-0 7.0-0 Nbd7 8.Re1  
 e5 9.dxe5 dxe5 10.Nf1 Qc7 11.Ng3 Nc5



12.Be3? Nxe4 13.Nxe4 Nxe4 14.Qc2  
 Nd6 15.Bc5?

A sleepy-headed trade if ever there was  
 one. 15.Bb3 held at least some hope.

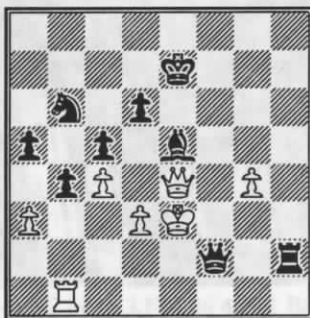
15...Nxc4 16.Bxf8 Kxf8 17.Rad1 Bg4  
 18.Qb3 b5 19.Rd3 a5 20.Qc2 Bf5 0-1

Rodriguez,A (1327) - Hansen,D (1641)  
 Bishop's Opening [C24]  
 1998 Chinook Open

1.e4 e5 2.Bc4 Nf6 3.d3 c6 4.Nf3 d6  
 5.Nbd2 Bg4 6.Bb3 Nbd7 7.Nc4 b5 8.Ne3  
 Bh5 9.Nf5 h6 10.Ng3 Bxf3 11.Qxf3 g6  
 12.c3 Bg7 13.h4 h5 14.Bg5 Qc7 15.0-0 0-0



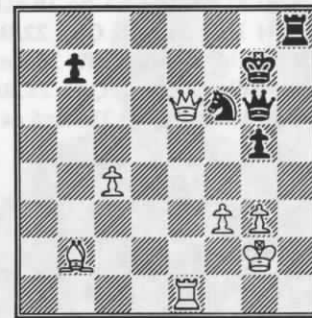
16.Rfe1 c5 17.c4 b4 18.Ba4 a5 19.Nf1  
 Ng4 20.Ne3 Nxe3 21.Qxe3 Nb6 22.Bd1  
 Qd7 23.f4? f6 24.fxe5 fxe5 25.Qxg5 Bxe5  
 26.Bxh5 Qg7 27.Bxg6 Bxb2 28.Rab1 Bd4+  
 29.Kh1 Rf6 30.h5 Raf8 31.g4 Rf2 32.a3  
 R2f3 33.h6 Rh3+ 34.Kg2 Rxh6 35.Rf1 Rf6  
 36.Rxf6 Bxf6 37.Bf7+ Kxf7 38.Qf4 Ke7  
 39.e5 Bxe5 40.Qe4 Rh2+ 41.Kf3 Qf6+  
 42.Ke3 Qf2# 0-1



Freddie Jay (1251) - Stuckey ,R (1225)  
 Sicilian [B20]  
 1998 Chinook Open,

1.e4 c5 2.Bc4 e6 3.Nc3 Nc6 4.d3 Nf6  
 5.Nf3 d6 6.0-0 a6 7.a4 Bd7 8.Re1 h6 9.d4  
 cxd4 10.Nxd4 Nxd4 11.Qxd4 Be7 12.b4  
 d5 13.exd5 Bxb4 14.Bxa6? Bxc3 15.Qxc3  
 Rxa6 16.Bb2 0-0 17.Rad1 Re8 18.h4 Rxa4  
 19.g3 Ra5? 20.dxe6 fxe6 21.Rxd7 Qxd7  
 22.Qxa5 Rf8 23.Qa2 Re8 24.Qb3 Kf7  
 25.Qf3 Kg8 26.Qb3 Qf7 27.f3 Kh8 28.c4  
 g5? 29.hxg5 hxg5 30.Qc3 Kg7 31.Kg2

Rh8 32.Qe5 Qg6 33.Qxe6

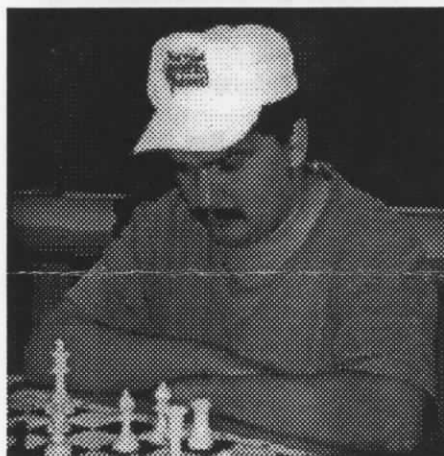


Better would have been 33.Qc7+! Kg8  
 34.Qc8+ Qe8 35.Qxe6+

33...Qc2+ 34.Qe2 Qg6? 35.Qe7+ Qf7  
 36.Qc5?

36...Bxf6+! wins immediately.

36...Qg6 37.Re7+ Kh6 38.g4 Qc2+  
 39.Qf2 Qxf2+ 40.Kxf2 Re8 41.Bxf6 Rxe7  
 42.Bxe7 Kg6 43.Ke3 Kf7 44.Bxg5 Ke6  
 45.Kd4 Kd6 46.Bd2 1-0



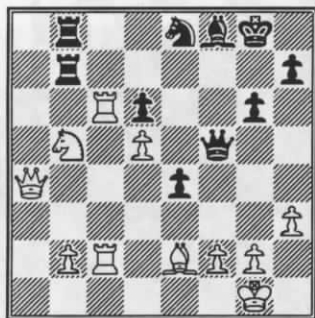
Freddie Jay

Stuckey,R (1225) - Rodriguez,A (1327)  
 English Opening [E91]  
 1998 Chinook Open

1.c4 Nf6 2.Nc3 g6 3.Nf3 Bg7 4.e4 d6  
 5.d4 0-0 6.Be2 Bg4 7.0-0 Nbd7 8.h3 Bxf3  
 9.Bxf3 e5 10.Bg5



10...c6 11.d5 Qc7 12.Bxf6 Nxf6  
 13.Qc2 a6 14.Rad1 Rac8 15.Rfe1 cxd5  
 16.cxd5 b5 17.a3 a5 18.Qb3 b4 19.axb4  
 axb4 20.Qxb4 Rb8 21.Nb5 Qd7 22.Be2  
 Rfd8 23.Rc1 Rb7 24.Rc6 Bf8 25.Re1  
 Ne8 26.Qc4 Rdb8 27.Qa4 Qd8 28.Ra6  
 Qg5 29.Rc2 f5 30.exf5 Qxf5 31.Rac6 e4



32.f3? exf3 33.gxf3

Richard must not have seen until too late that the bishop could not recapture owing to 33...RxN

33...Qxh3 34.Qg4 Qh6 35.Qe6+ Kh8 36.Qg4 Rf7

Better is 36...Nf6, followed soon by RxN.

37.R6c4? Rxb5 38.Re4 Nf6 39.Qh4 Qxh4 40.Rxh4 Rb8 41.Rf4 Bh6 42.Rfc4 Nxd5 43.Rd4 Be3+ 44.Kf1 Bxd4 0-1

Furdell,W (1251) - Freddie Jay (1357)  
 English Opening [A00]  
 1998 Chinook Open

Slow development (he doesn't get to move a kingside piece until move 23) leads to Freddie's undoing.

1.c4 c5 2.g3 Nc6 3.Bg2 b6 4.Nf3 e6  
 5.Nc3 Bb7 6.0-0 f6 7.b3 Qe7 8.Nb5 0-0-0  
 9.d4 Kb8 10.Bf4+ d6



White has just about completed development, but Black has a long way to go.

11.dxc5 e5 12.cxd6 Qd7 13.Be3 a6?  
 14.Bxb6 axb5 15.Bxd8  
 15.cb5 looks better here.

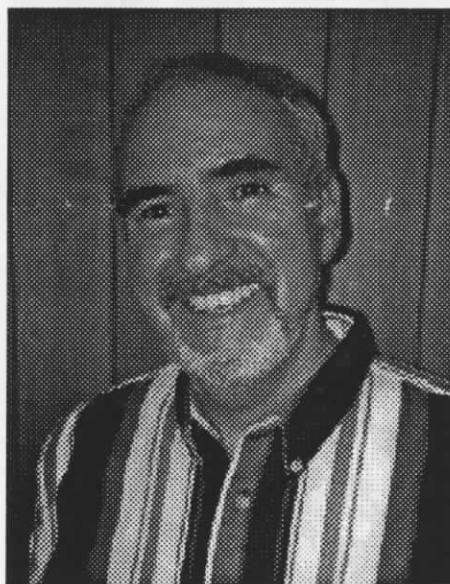
15...Nxd8 16.c5 g5 17.a4 Qc6 18.axb5 Qxb5



19.Nxg5?

That one is hard to figure. It's not as if Bill couldn't see that the pawn was defended, so who can say what enticed him to take it? His forward pawns prove unstoppable in any case.

19...Bxg2 20.Kxg2 fxg5 21.Qd5 Qc6  
 22.Qxc6 Nxc6 23.Ra4 Nf6 24.Rfa1 Kb7  
 25.b4 Bxd6 26.cxd6 Kc8? 27.Ra8+ Nb8  
 28.R1a7 Nfd7 29.Rc7+ Kd8 30.b5 Rg8  
 31.b6 Rg6 32.b7 Rxd6 33.Rc8+ Ke7  
 34.Raxb8 Nxb8 35.Rxb8 Rb6 36.Rh8 1-0



Bill Furdell

Doulas,N (1250) - Furdell,B (1357)  
 King's Indian Attack [A06]  
 1998 Chinook Open

This game was one of only two draws in the whole tournament this year.

1.Nf3 d5 2.g3 Nf6 3.Bg2 Bg4 4.0-0 Nc6  
 5.d3 e5 6.Bg5 h6 7.Bxf6 gxf6 8.e4 dxe4  
 9.dxe4 Qxd1 10.Rxd1 Bxf3 11.Bxf3 Nd4  
 12.Nd2 0-0-0 13.Bg4+ Kb8 14.Nb3 Be7  
 15.Nxd4 Rxd4 16.Rxd4 exd4 17.Rd1 h5

18.Bf5 c5 19.c3 Rd8 20.cxd4 cxd4



At the risk of stating the obvious, Black has the inferior pawn structure.

21.f4 d3 22.e5

Why undouble Black's terrible pawns for him? 22.Kg2 was in order.

22...fxe5 23.Rxd3 exf4 24.Rxd8+ Bxd8  
 25.gxf4 Bc7 26.Kg2 Bxf4 27.Kf3? Bxh2  
 28.Kg2 Be5 29.b3 a5 30.Kh3 b5?

30...Bf6 would defend the pawn.

31.Kh4 f6 32.Kxh5 Kc7 33.Kg4 b4  
 34.Be6 Kd6 35.Kf5 Kc5 36.Bd7 Kd4  
 37.Ba4 Kc3 38.Ke4 Kb2 39.Kf5 Kxa2



Black is up two pawns, but this is a classic opposite colored bishop endgame. White can take free moves with either his king or bishop, so Black can't make any progress.

40.Ke6 Kb2 41.Kf5 Kc3 42.Ke4 Kd2  
 43.Kf5 Ke3 44.Bb5

And after another twenty moves Bill conceded the draw. 1/2-1/2

Skovron,J (1933) - Doulas,N (1250)  
 King's Indian [E70]  
 1998 Chinook Open

**Warning:** The following game contains graphic violence. Parental discretion is advised.

1.d4 Nf6 2.c4 g6 3.Nc3 Bg7 4.e4 0-0  
 Premature, but not total disaster unless Black misplays. He does.

5.e5 Nh5?

The strange looking 5...Ne8 could have

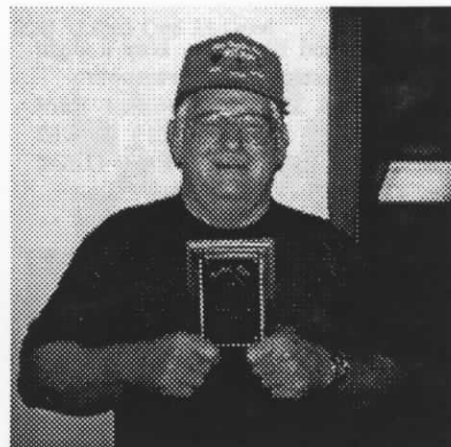


actually worked, but not this.

6.g4 Nf6 7.exf6 Bxf6 8.Bh6 Bg7 9.Qd2  
Re8 10.0-0 e6 11.h4 d5 12.h5 dxc4  
13.Bxg7 Kxg7 14.hxg6 fxg6 15.Qh6+ Kf6  
16.Qxh7 Nc6 17.Ne4# 1-0



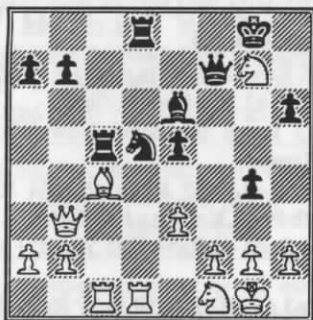
24...RxR+ would have given Black a sure win. Now White agrees to a draw for no apparent reason. 25.RxR would give the sure win to White. ½-½



Dave Hofland, with his upset prize

McBroom,B (1598) - Jensen,M (1921)  
Queen Pawn Game [A48]  
UCCC First Fall Open

1.d4 Nf6 2.Nf3 g6 3.Bg5 Bg7 4.e3 d5  
5.Be2 0-0 6.0-0 c5 7.c3 Qb6 8.Qb3 Qd8  
9.dxc5 Nbd7 10.Bxf6 Nxf6 11.Nbd2 Qc7  
12.Qb4 e5 13.Rfd1 h6 14.Nf1 Be6 15.c4  
Rfd8 16.cxd5 Nxd5 17.Qa3 f5 18.Rac1 g5  
19.Bc4 g4 20.Nh4 Qf7 21.Qb3 Rac8  
22.Nxf5 Rxc5 23.Nxg7 ½-½



This may have been one of those occasions in which Bill feared sleep was coming over him. He offered a draw in spite of having a commanding lead. After 23...KxN 24.e4 White is going to gain more material.

Long,M - Mayer,E  
New St. George [C00]  
Livingston October Open

1.e4 e6 2.d4 a6 3.c4 b5 4.cxb5 Bb7 5.Nc3  
Bb4 6.f3 Nf6 7.bxa6 Nxa6 8.Be3 Rb8 9.Bd3  
c5 10.Nge2 0-0 11.0-0 Qe7 12.a3 Ba5  
13.Bxa6 Bxa6 14.b4 cxb4 15.axb4 Bxe2  
16.Nxe2 Bxb4 17.Qd3 Rfc8 18.Nf4 Rc3  
19.Qe2 Ba3 20.Rfc1 Rbc8 21.e5 Ne8  
22.Bd2 R3c4 23.Qd3 Bb4 24.Bxb4 Rxb4?

Griffin,D (1592) - Nowak,G (2200)  
English [A20]  
1998 Turkey Open

1.c4 d6 2.g3 e5 3.Bg2 f5 4.e4 fxe4  
5.Bxe4 Nf6 6.Bg2 Nc6 7.d3 Be7 8.Nc3 0-0  
9.f4 Qe8 10.Nge2 Qg6 11.Nd5 Bd8 12.0-0  
Bf5 13.Nxf6+ Bxf6 14.Bxc6 bxc6 15.d4  
Bh3 16.Rf2 exd4 17.Nxd4 Qe4



18.Re2? Bxd4+ 0-1

Hofland,D (1258) - Gilbertson,E (1377)  
Stonewall [C20]  
1998 Turkey Open

1.e4 e5 2.c4 c6 3.Nf3 d6 4.Be2 Bg4 5.d3  
Nf6 6.Bg5 Nbd7 7.Nfd2 Bxe2 8.Qxe2 h6  
9.Be3 d5 10.exd5 cxd5 11.f4 Bd6 12.fxe5  
Bxe5



13.Bd4? 0-0 14.Nb3? Bxd4 15.Qc2  
If 15.NxB then 15...Re8 nabs the queen.  
15...Qe7+ 16.Kd1 Bc5 17.d4 Bd6  
18.Nc3 dxc4 19.Nd2 Rfe8 20.Nf3 Ng4  
21.Nd5 Qe4 22.Qxe4 Rxe4 0-1

Fabian,S (1814) - McBroom,W (1621)  
Caro-Kann Classical [B18]  
1998 Turkey Open

1.e4 c6 2.d4 d5 3.Nc3 dxe4 4.Nxe4 Bf5  
5.Ng3 Bg6 6.Nf3 Nd7 7.a4

Unorthodox, but effective in this game. More usual is h4.

7...Ngf6 8.Bc4 e6 9.0-0 Be7 10.Re1 0-0  
11.Qe2 Nd5 12.Bb3 N7f6 13.Ne5 Qc7

13...Qb6 is probably better.

14.c4 Nb6 15.Bf4 Qc8 16.Nxg6 hxg6  
17.h4

Instead 17.a5 would really put Black on the defensive.

17...Nbd7 18.h5 gxh5 19.Nxh5 Nxh5  
20.Qxh5 Nf6 21.Qh2 Bb4 22.Re2 Qd7  
23.Bc2 Rfd8 24.c5? Qxd4 25.Be5 Qxc5  
26.Bxf6 gxf6 27.Rc1



27...Kf8?

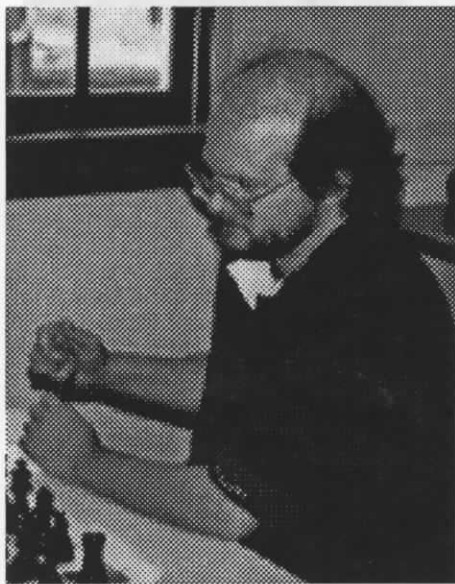
27...Qg5 would remove the threat of discovered attack on the queen and defend the kingside at the same time.

28.Rxe6! fxe6 29.Qh8+ Ke7 30.Qg7+  
Kd6 31.Rd1+ Qd5 32.Rxd5+ cxd5

### 33. Qxb7 Bc5

33...Rdb8 and Black may keep a slight edge. Now White's queen goes to town.

34.b4 Bb6 35.a5 Bc7 36.Ba4 Rac8 37.Qxa7 Bxa5 38.Qxa5 Rc1+ 39.Kh2 Rh8+ 40.Kg3 Rg8+ 41.Kf3 Rc3+ 42.Ke2 Rg2 43.b5 Rc5 44.Qb6+ 1-0



Steve Fabian

Carr,J (1821) - Fabian,S (1814)  
Slav [D10]  
1998 Turkey Open

1.d4 d5 2.c4 c6 3.cxd5 Nf6 4.Nc3 Bf5 5.e3 Nxd5 6.Nxd5 Qxd5 7.f3 e5 8.Ne2 Na6 9.Nc3 Bb4 10.Bxa6 exd4 11.0-0 dxc3 12.Bxb7 Rd8



### 13. Qxd5

13.Qa4 eyes both c6 and the bishop. Now White's clear advantage starts to slip away.

13...cxd5 14.bxc3

14.Rd1 keeps an edge.

14...Bxc3 15.Bc6+ Rd7? 16.Ba3 Bxa1 17.Rxa1 Kd8 18.Bxd7 Kxd7 19.Bc5 a6 20.Rd1 Be6 21.Rb1 Rc8 22.Bd4 g6 23.Rb7+ Rc7 24.Rb2 h5 25.Kf2 Bf5

### 26. Ke2 Rc2+ 1/2-1/2

With bishops of opposite color this one is headed nowhere.

Jensen,M (1908) - Nowak,G (2200)  
King's Indian Attack [A05]  
1998 Turkey Open

1.Nf3 Nf6 2.g3 d6 3.Bg2 g6 4.0-0 Bg7 5.d3 c5 6.Nbd2 Nc6 7.e4 0-0 8.Re1 Ne8 9.c3 Nc7 10.Nf1 b5 11.e5?!



This move is based on a miscalculation on Mike's part. Like some chess computers, it seems his "horizon" was one move short.

11...dxe5 12.Nxe5? Nxe5 13.Rxe5? Bxe5 14.Bxa8 Nxa8 0-1

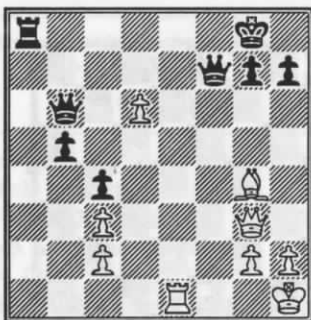
Easter,E (unr.) - Sweeney,T (1285)  
Queen Pawn Opening [D00]  
1998 Turkey Open

Newcomer Erick Easter lives up to his name, rising from the dead in this one.

1.d4 d5 2.Nc3 Nf6 3.Nf3 e6 4.e3 Bb4 5.Be2 0-0 6.Bd2 Nbd7 7.0-0 c5 8.a3 Bxc3 9.Bxc3 c4 10.Bb4 Re8 11.Bd6 Qb6 12.Bb4 a5 13.Bc3

And the bishop returns home with its tail between its legs.

13...Ne4 14.Rb1 Nxc3 15.bxc3 Qd6 16.Re1 Qxa3 17.Qd2 e5 18.Rb5 Qd6 19.e4 Qc6 20.Rxd5 Nf6 21.Rc5 Qa4 22.Rxe5 Nxe4 23.Rxe8+ Qxe8 24.Qe3 b5 25.Bd1 f5 26.Ne5 a4 27.f3 a3 28.fxe4 a2 29.exf5 a1Q 30.Qg3? Qa6 31.Ng4 Qf7 32.d5 Bxf5 33.d6 Bxg4 34.Bxg4 Qb6+ 35.Kh1



### 35... Qbf2?

Right square, wrong queen. 35...Qff2 works fine.

36.Be6 Qxe6 37.Qxf2 Qxd6 38.Rf1 Rd8 39.h3 Qe5?

39...Rf8, and Black can play for the better endgame.

40.Qf7+ Kh8 41.Qf8+ 1-0

Chester,J (1506) - Hofland,D (1253)  
Colle [D04]  
1998 Turkey Open

This game won the biggest upset prize for Dave Hofland.

1.d4 d5 2.Nf3 Nf6 3.e3 Bg4 4.Bd3 e6 5.0-0 Nbd7 6.Nbd2 Bb4 7.c3 Bd6 8.Qc2 Bxf3 9.Nxf3 0-0 10.Ng5 g6 11.e4 Be7 12.e5 Nh5 13.Nh3 c5 14.b3?!

White should ignore Black's advance and play either 14.Be3 or 14.Bh6 instead.

14...Rc8 15.Qb1 cxd4 16.cxd4 Bb4 17.Rd1 Qh4?! 18.Bg5! Qxd4 19.Bxg6 Qxe5 20.Bxh5 Bc3 21.a4 Bxa1 22.Qxa1 Qxa1 23.Rxa1 Rc3 24.b4 Rfc8 25.g3 Ne5 26.Bf6 Nf3+? 27.Bxf3?

After 27.Kg2 Black loses a piece or the exchange.

27...Rxf3 28.Bd4 a6 29.Be3 Rf6 30.f4 h5 31.Rc1 Rxc1+ 32.Bxc1 Rg6 33.Nf2 f5 34.Nd3 h4 35.Kg2 hxg3 36.hxg3 Rg7 37.Nc5 Re7 38.Kf3 Kf7 39.Ke3 Rc7 40.Bb2 a5? 41.Ba3?

41.Be5 Rc6 42.Nxb7 is good for White.

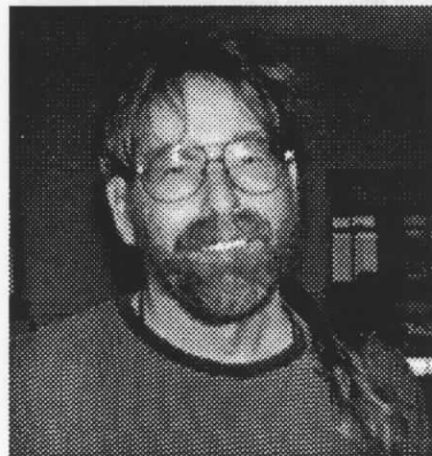
41...axb4 42.Bxb4 b6 43.Nb3?

43.Nd3 keeps the edge. Now White's game collapses.

43...Rc4 44.Bd6? Rc3+ 45.Kd4 Rxb3 46.Bc7 Rb4+ 47.Ke5 Rxa4 48.Bxb6

48...d4 Bxd4 49.Ra5+ Kd5 50.Rd5+ wins the piece.

48...Ra3 49.Bf2 Rf3 50.Be1? Re3+ 0-1



James Chester, long time no see

## A proposal from Michael Long to change our Grand Prix system

In the box below is the text of a strongly worded letter from Michael Long. In it he suggests revising the Grand Prix system to make it possible to run a Grand Prix tournament without advance notification in the Newsletter. Current bylaws require that directors who want their tournaments to have Grand Prix status announce them as such ahead of time in the Newsletter.

Michael's proposal, which is now being debated among the Executive Board members, is to designate the first tournament in any city as that city's Grand Prix event, provided at least ten

players participate.

This proposal came about after Michael requested an exception to the bylaws in order to get Grand Prix standing for a tournament he was going to run in Livingston the next week. The majority of the Board voted against the request, feeling that the ten day advance notice Michael gave for the tournament was inadequate for Grand Prix status, bylaws or no bylaws.

Board members are canvassing their various clubs for member reactions to Michael's proposal. The Newsletter welcomes any letters to the editor for or

against this idea, as well as any counter proposals that might be worthy of consideration.

Does the Grand Prix system need adjustment? Let's hear from you.

A second proposal Michael makes is to allow any member to require a general vote by mail on any proposal. This would be an amendment to the MCA Constitution.

Michael was insistent about having his exact wording reproduced, and the Newsletter is honoring that request. Ultimately the membership will be deciding these issues, so stay informed.

### *From Michael Long, to the membership and officers of the MCA via the newsletter.*

This letter is written with the intent of promoting and enlivening Montana chess. I am herein formally requesting that this letter be published in the next newsletter and that the members of the MCA be given the right to vote upon the issues presented herein. A word of thanks is also due to Sherwood Moore and to Les Brennan. As an administrator of MCA Sherwood put his energies and his vision where they counted -- into bringing the MCA into the highest levels of fairness and member interest that it ever experienced, and Les put out one of the very finest chess newsletters in the entire United States. The members of MCA want you both to know that we appreciate foundations you built for all of us.

Today, we have a strong need to reestablish interest in Montana chess as well as to create a platform of fairness that certain outdated rules no longer give. In 1998 we saw the Chinook tournament in Great Falls draw less than ten entries. There are correctable reasons for this falloff of interest.

The current grand prix rules and application are at this time totally outdated and anyone who plays in a closed based upon grand prix points could just as well be picked by flipping a coin. Let's look at this. In 1997 we had two grand prix tournaments. *[Editor's note: There were three.]* Only one of these had any significance -- the Montana Open. The other simply represents results coming from one isolated location. There needs to be a lot of grand prix tournaments to represent the entire membership, because if this is not done, the results are meaningless. Another big problem now exists -- notification. The MCA newsletter now comes out once every three months. It can no longer be regarded as a viable and current communication device. If a newsletter has just come out and a tournament is being planned at that time, in order to comply with the grand prix notification rule, that tournament has to be scheduled at least three months ahead to get into the next newsletter plus another month to allow the members to read it and plan for it. That means that under the current rules, that tournament has to be scheduled four months ahead, which is absurd. The current rules and the current officers are not promoting and enlivening Montana chess, but this can be corrected. First, we need officers who put the promotion and enlivenment of Montana chess first and not the clinging to outdated rules which are clearly not working as verified by what is happening. That includes providing for a WAY TO RECOGNIZE AND CORRECT UNWORKABLE POLICIES within the MCA in a logical and expedient manner without waiting for some distant Montana Open to address what the members want. Successful people do not operate this way any more than they cling to outdated policies. They demonstrate the power to get what's needed done in a highly expedient manner. Second, the current grand prix setup is a joke. In 1995, I was the grand prix champion of Montana. At that time, there were a lot of grand prix tournaments and the entire membership was represented. In 1997, I had almost zero grand prix points. The grand prix no longer represents the membership.

There are several workable ways to increase interest and fairness in Montana chess at this time. I present these in a manner that allows you, the membership, to voice your own views and preferences by the following votes.

A. A member who sees a valid need within the MCA has the right to publish both the need and the solution as well as to obtain the votes of the membership either affirming or rejecting the solution. For purposes of definition, valid shall mean anything pertaining to the entire membership.

B. That the grand prix may more fully represent the membership by modifying it as follows: that the first tournament in every city in Montana that draws ten or more entries automatically qualifies as a grand prix event, and that no tournament with less than ten entries qualifies as a grand prix event except that the Montana Open remains a grand prix event without any reservations. That every city in Montana shall have one grand prix event only except that the Montana Open shall not count as a second tournament.

C. That the grand prix be dropped out of Montana chess and that the participants in the closed all be chosen by their results in the Montana Open. There will thus be an excellent opportunity for every member to gain a position from the Montana Open. The current champion will of course be an automatic participant.

D. That the grand prix be left just the way it is.

On items B, C, and D vote for one choice only. Vote for item A as a separate issue.

The MCA is your organization, guys, so let's hear what you think.

*[Editor's note: The above is only Michael's proposed ballot format. Do not vote at this time.]*

**Smith-Morra, from page 3**

15.Bb6 Nxc1 16.Bxd8 Bxd8 17.Rxc1 Ne7

17.Rd1 Qc8 18.Rc1 Bd6 19.Rxc6 Bxc6 20.Qxc6 Qxc6 21.Bxc6 Nf6

**C) 12.Nxb5!**

White can really bottle up Black with this sac, but the result is unclear.

12...axb5 13.Qxb5 Bb7 14.Ba4! Kf8 15.Rac1 Nf6! 16.Bb6 Qb8 17.Rxc6 Bxc6 18.Qxc6 Rb7



Both sides are in for a hard game.

**D) 12.Rac1**

12...Na5!

The natural 12...Bb7 lets White into Variation C with 13.Nxb5! After the text move this sac is weaker.

13.Nxb5?! axb5 14.Qxb5 Nxb3



White has a tough road ahead.

**E) 12.e5**

White will try again.

12...dxe5 13.Nxb5 axb5 14.Qxb5 Bb7 15.Ba4 Kf8 16.Rxd7 Qxd7



And Black looks better, regardless of White's queenside pawns.

Does all this slay the Smith-Morra? Not really, but I hope the Chicago Defense provides you with one more weapon to oppose White's boldness. Give this variation a try someday, and let me know how it works out.

Be careful playing it against John Thompson of Billings, though. After all, he's the master that taught Ken Smith how to play chess! ♔

**The Polgar Corner**

The following position is taken from the encyclopaedia *Chess* by László Polgár. How quickly can you find this mate in two? The answer is on the back page.



White to move and mate in two.

| Grand Prix Race Leaders |      |
|-------------------------|------|
| Dan McCourt             | 9.05 |
| Thad Suits              | 9.05 |
| Jim Skovron             | 7.62 |
| Doug Hansen             | 6.67 |



St. Alex and the Dragon

# Upcoming Events

**USCF and MCA (or other state) memberships required for all events unless otherwise specified**

## January 16-17 (Martin Luther King, Jr. Holiday) — Five Valleys Freeze-Out

**Format:** 5 round Swiss, Game/2hrs. 2 sections, Open and Reserve (U1500). **Format and prizes based on 15 entries. Site:** Meeting room of Finnegan's Restaurant, 700 East Broadway, Missoula. **EF:** \$10 by Jan 15, \$15 at site, Jnrs \$2 less. **Prizes:** Open - \$50, \$25; \$20 top U1800. Reserve - \$20, \$15. \$5 returned to any player barelegged from above the knees to top of socks throughout. **Rnds:** 10:00, 2:15, 6:45 / 9:30, ASAP. **Entries to:** Dan McCourt, 608 West Central, Missoula, MT 59801. Tel. 406-721-0254.

## January 23-24 — Helena's January Thaw (a Montana Grand Prix event — Back in Helena!)

**Format:** 5 round Swiss, 40/90, SD/30. **Site:** Lewis & Clark Library, 120 S. Last Chance Gulch. **EF:** \$20 by Jan 21, \$25 at site. **Prizes:** Based on 12 entries — 1st - \$100, 2nd - \$50, \$25 biggest upset prize. **Registration:** 8:00- 8:45 **Rnds:** 9, 2, 7 / 9, 2. **Entries to:** Melvin Drake, 5950 Canyon Ferry Rd, Helena, MT 59602. Tel. 475-3481. Possible Internet chess demonstration on the side.

## February 20-21 — Valentine Open

**Format:** 4 round Swiss, Game/2hrs. **Site:** University of Montana Social Sciences Building, Room 362, Missoula. **EF:** \$15 by Feb. 18, \$20 at site, **Prizes:** 1st - \$100, 2nd - \$50, \$20 class prizes. **Registration:** 8:00-8:45. **Rnds:** 9,2/9,2. **Entries to:** Mike Jensen, 3714 Creekwood, Missoula, MT 59802.

## May 22-23 — The 1999 Montana State Open in Bozeman (Mark your calendars now!)

# Tournament Tables

| Chinook Open (10/10,11/98) |                    |      |      |      |      |      |      |       |
|----------------------------|--------------------|------|------|------|------|------|------|-------|
| #                          | Name               | Rtng | Rd 1 | Rd 2 | Rd 3 | Rd 4 | Rd 5 | Total |
| 1                          | Thad Suits         | 2015 | W6   | W5   | H--- | W4   | D3   | 4.0   |
| 2                          | Dan McCourt        | 1635 | W10  | L3   | W5   | W7   | W9   | 4.0   |
| 3                          | Ronald A Matous    | 1983 | W7   | W2   | L4   | W6   | D1   | 3.5   |
| 4                          | James J Skovron    | 1933 | H--- | W8   | W3   | L1   | W10  | 3.5   |
| 5                          | Douglas J Hansen   | 1641 | W9   | L1   | L2   | W10  | W7   | 3.0   |
| 6                          | William J Furdell  | 1357 | L1   | W9   | H--- | L3   | D8   | 2.0   |
| 7                          | Augusto Rodriguez  | 1327 | L3   | W10  | W8   | L2   | L5   | 2.0   |
| 8                          | Nick Doulas        | 1250 | H--- | L4   | L7   | W9   | D6   | 2.0   |
| 9                          | Freddie Jay        | 1251 | L5   | L6   | W10  | L8   | L2   | 1.0   |
| 10                         | Richard L. Stuckey | 1225 | L2   | L7   | L9   | L5   | L4   | 0.0   |

| Hardee's Classic (Livingston, 11/15/98) |                |      |      |      |      |      |       |
|---|----------------|------|------|------|------|------|-------|
| #                                       | Name           | Rtng | Rd 1 | Rd 2 | Rd 3 | Rd 4 | Total |
| 1                                       | Michael Long   | 1747 | W6   | W5   | W4   | W3   | 4.0   |
| 2                                       | Jan Johansson  | 2059 | L5   | W6   | W7   | W4   | 3.0   |
| 3                                       | Howard F Hoene | 1761 | W7   | L4   | W5   | L1   | 2.0   |
| 4                                       | Brian Bailey   | 1517 | W8   | W3   | L1   | L2   | 2.0   |
| 5                                       | Eriel Mayer    | 1485 | W2   | L1   | L3   | X--- | 2.0   |
| 6                                       | Mel Drake      | 1311 | L1   | L2   | W8   | W7   | 2.0   |
| 7                                       | David Page     | 1343 | L3   | W8   | L2   | L6   | 1.0   |
| 8                                       | Rick Edmiston  | 1086 | L4   | L7   | L6   | F--- | 0.0   |

| Turkey Open (11/14,15/98) |                     |      |      |      |      |      |     |
|---------------------------|---------------------|------|------|------|------|------|-----|
| #                         | Name                | Rtng | Rd 1 | Rd 2 | Rd 3 | Rd 4 | Tot |
| 1                         | Gregory Nowak       | 2200 | W7   | W4   | W5   | D2   | 3.5 |
| 2                         | Fabian, Steve       | 1814 | W8   | W6   | D4   | D1   | 3.0 |
| 3                         | Younker, Gary       | 1647 | W16  | L11  | W10  | W9   | 3.0 |
| 4                         | Carr, John          | 1821 | W10  | L1   | D2   | W7   | 2.5 |
| 5                         | Jensen, J. Michael  | 1908 | W15  | W9   | L1   | D6   | 2.5 |
| 6                         | McBroom, William    | 1621 | W13  | L2   | W8   | D5   | 2.5 |
| 7                         | Griffin, David      | 1575 | L1   | W17  | W12  | L4   | 2.0 |
| 8                         | Rodriguez, Augusto  | 1327 | L2   | W13  | L6   | W15  | 2.0 |
| 9                         | McCourt, Daniel J.  | 1625 | W19  | L5   | W14  | L3   | 2.0 |
| 10                        | Bye, Griff          | 1454 | L4   | W19  | L3   | W13  | 2.0 |
| 11                        | Carpenter, Romie    | 1822 | W14  | W3   | U--- | U--- | 2.0 |
| 12                        | Hofland, Dave L.    | 1258 | L17  | W15  | L7   | L18  | 1.0 |
| 13                        | Easter, Erick       | unr. | L6   | L8   | W16  | L10  | 1.0 |
| 14                        | McCourt, Chris      | 1458 | L11  | W16  | L9   | U--- | 1.0 |
| 15                        | Chester, James      | 1506 | L5   | L12  | W19  | L8   | 1.0 |
| 16                        | Sweeney, Timothy N. | 1285 | L3   | L14  | L13  | W19  | 1.0 |
| 17                        | Gilbertson, Eric    | 1447 | W12  | L7   | U--- | U--- | 1.0 |
| 18                        | Gisselbeck, Donald  | 1377 | U--- | U--- | U--- | W12  | 1.0 |
| 19                        | Young, Scott        | 1200 | L9   | L10  | L15  | L16  | 0.0 |

## MCA Members - December, 1998

Here is our annual paid-up membership list as of press time. Phone numbers (area code 406 unless otherwise noted) and Email addresses are included where known. Your expiration date is listed in year/month format, so if you are nearly expired, don't forget to send in your renewal. Thanks to everyone on this list for keeping interest in chess alive and well in Montana.

|             |            |                           |               |    |       |      |              |                                     |
|-------------|------------|---------------------------|---------------|----|-------|------|--------------|-------------------------------------|
| Amundsen    | Hal        | 133 N Harrison            | Townsend      | MT | 59644 | 9905 | 266-4154     |                                     |
| Anderson    | Hans       | 430 N Higgins, Apt 3K     | Missoula      | MT | 59802 | 9903 |              |                                     |
| Anderson    | Marshall   | Box 748                   | Chinook       | MT | 59523 | 9905 |              |                                     |
| Arnold      | Michael    | 14 Fox Island Ln          | Great Falls   | MT | 59405 | 9911 | 761-5317     |                                     |
| Bailey      | Andrea     | 400 Butler                | Helena        | MT | 59601 | 9909 | 443-2329     |                                     |
| Bailey      | Brian      | 309 E Garfield St, Apt F  | Bozeman       | MT | 59715 | 9909 | 587-9625     | shrike.montana@montana.campuscw.net |
| Bodie       | Brad       | 364 Ponderosa Dr          | Post Falls    | ID | 83854 | 9811 |              |                                     |
| Borchardt   | James      | 1563 Virginia Dale        | Helena        | MT | 59601 | 9909 |              |                                     |
| Both        | Bob        | Box 93234                 | Milwaukee     | WI | 53203 | 9812 |              |                                     |
| Brennan     | Les        | Box 2404                  | Colstrip      | MT | 59323 | 0202 | 748-2154     |                                     |
| Brownlee    | Keith      | E. 4233 9th               | Spokane       | WA | 99202 | 9905 |              |                                     |
| Bye         | Griff      | PO Box 254                | Kevin         | MT | 59454 | 9911 |              |                                     |
| Carpenter   | Romie      | 9195 Western Farms Rd     | Missoula      | MT | 59802 | 9911 |              |                                     |
| Carr        | John       | Box 1323                  | Jackson       | WY | 83001 | 9911 |              |                                     |
| Chester     | James      | PO Box 1201               | Eureka        | MT | 59817 | 9811 |              |                                     |
| Christopher | Stephen    | 903 Calry Rd              | Edmond        | WA | 98020 | 9907 |              |                                     |
| Colvin      | Gary       | 10000 Wyandotte, Apt. 303 | Kansas City   | MO | 64114 | 9908 | 816-943-6370 | gcolvin@unicom.net                  |
| Cunningham  | Jerry      | 137 Cobbler Village Rd    | Kalispel      | MT | 59901 | 9905 |              |                                     |
| Dawson      | Alex T.    | 1805 9th Ave              | Helena        | MT | 59601 | 9810 | 443-7903     | dawson@ixi.net                      |
| De Moss     | James      | 2802 North 4th            | Couer D'Alene | ID | 83815 | 9811 |              |                                     |
| Doulas      | Nick       | 523 27th St. S.           | Great Falls   | MT | 59405 | 9905 | 727-2310     |                                     |
| Drake       | Mel        | 5950 Canyon Ferry Rd      | Helena        | MT | 59601 | 9910 | 475-3481     |                                     |
| Duke        | David      | Box 3052                  | Billings      | MT | 59103 | 9905 | 238-0287     | dduke@mcn.net                       |
| Easter      | Erik       | 7855 Parkwood Dr.         | Missoula      | MT | 59808 | 9911 |              |                                     |
| Edmiston    | Rick E.    | 316 W. Front              | Livingston    | MT | 59047 | 9902 |              |                                     |
| Erickson    | Ron        | 3250 Pattee Canyon Dr.    | Missoula      | MT | 59803 | 9811 |              |                                     |
| Fabian      | Steve      | 147 MacArthur St.         | Richland      | WA | 99352 | 9911 |              |                                     |
| Farr        | Carla      | 519 Evelyn                | Lewistown     | MT | 59457 | 9905 |              |                                     |
| Furbush     | Richard    | 55 S. Fee St              | Helena        | MT | 59601 | 9907 | 449-4729     |                                     |
| Furdell     | Bill       | 5101 Oakwood Ct           | Great Falls   | MT | 59405 | 9910 | 453-8013     |                                     |
| Gisselbeck  | Donald     | 10455 Pt. Six Road        | Missoula      | MT | 59802 | 9911 |              |                                     |
| Goplen      | Arman      | 1220 North First St       | Bismarck      | ND | 58501 | 9811 |              |                                     |
| Hansen      | Doug       | 3805 7th St NE, #59       | Great Falls   | MT | 59404 | 9910 | 761-4517     |                                     |
| Hash        | Dr. Daniel | 2520 Grizzly Gulch        | Helena        | MT | 59601 | 9910 |              |                                     |
| Hash        | Ty         | 2520 Grizzly Gulch        | Helena        | MT | 59601 | 9910 |              |                                     |
| Hildenstab  | Duane      | 2995 Prospect #6          | Helena        | MT | 59601 | 9910 |              |                                     |
| Hoene Jr.   | Howard     | 935 Howard Ave            | Billings      | MT | 59101 | 9905 |              |                                     |
| Hofland     | Dave       | PO Box 255                | Kevin         | MT | 59454 | 9911 |              |                                     |
| Jensen      | Mike       | 3714 Creekwood            | Missoula      | MT | 59802 | 9905 | 721-0131     |                                     |
| Johnson     | Dave       | PO Box 18627              | Panama City   | FL | 32417 | 9911 |              |                                     |
| Joki        | Rodney     | 845 N. 23rd St            | Couer D'Alene | ID | 83814 | 0004 |              |                                     |
| Jones       | David      | Box 189                   | Potlach       | ID | 83855 | 9903 |              |                                     |
| Joyce       | Michael    | 516 Woodford St           | Missoula      | MT | 59801 | 9812 |              |                                     |
| Katzl       | Rudolf     | 4022 South Ave. West #66  | Missoula      | MT | 59804 | 9811 |              |                                     |
| Kennedy     | John       | P.O. Box 2307             | Colstrip      | MT | 59323 | 9909 | 748-4449     |                                     |
| Legan       | Johnny     | Box 849                   | Corvallis     | MT | 59828 | 9901 |              |                                     |
| Long        | Michael    | Box 473                   | Livingston    | MT | 59047 | 9911 |              |                                     |
| Lynch       | William    | 2010 14th St. West        | Billings      | MT | 59102 | *    |              |                                     |
| Martin      | Robert     | Box 1922                  | East Helena   | MT | 59635 | 9905 |              |                                     |
| Martinez    | Michael    | Box 3984                  | Missoula      | MT | 59806 | 0502 |              | martinez@lonewolfpub.com            |
| Matous      | Ronald     | Box 102                   | Kelly         | WY | 83011 | 9910 |              |                                     |
| Mayer       | Eriel      | 4415 Rimrock Rd           | Billings      | MT | 59106 | 9905 | 655-0907     |                                     |
| Mayer       | Zygmund    | 4415 Rimrock Rd           | Billings      | MT | 59106 | 9905 | 655-0907     |                                     |
| McBroom     | William    | 2321 Raymond              | Missoula      | MT | 59802 | 9911 | 728-4654     | whm@selway.umt.edu                  |
| McCourt     | Chris      | 608 West Central          | Missoula      | MT | 59801 | 9907 | 721-0254     |                                     |
| McCourt     | Dan        | 608 W. Central            | Missoula      | MT | 59801 | 9907 | 721-0254     |                                     |
| McDonald    | Patrick    | ?? UNKNOWN ??             | Billings      | MT | 59102 | 9905 |              |                                     |
| Moore       | Sherwood   | 453 Minnesota             | Missoula      | MT | 59802 | 9902 | 728-1695     |                                     |
| Motta       | Paul       | Box 7891                  | Missoula      | MT | 59807 | 9910 |              |                                     |
| Mowbray     | Nolan      | 2518 Bay Pt. Rd.          | Polson        | MT | 59860 | 9811 |              |                                     |
| Mundy       | Jerry      | Box 185                   | Livingston    | MT | 59047 | 9811 |              |                                     |
| Nash        | Max        | 1950 Green Mtn Rd         | Polson        | MT | 59860 | 9811 |              |                                     |
| Nowak       | Greg       | Hellgate Sta. - Box 8572  | Missoula      | MT | 59807 | 9907 | 549-7805     |                                     |
| O'Brian     | Michael    | 120 N. Montana St, Apt 18 | Butte         | MT | 59701 | 9810 |              |                                     |
| Page        | David      | ?? UNKNOWN ??             | Billings      | MT | 59101 | 9905 |              |                                     |
| Polette     | Dan        | 29 S. Rodney              | Helena        | MT | 59601 | 9909 | 449-3837     |                                     |
| Pyterek     | Allen      | Lansford Hall Rm #406     | Bozeman       | MT | 59717 | 9810 |              |                                     |
| Ray         | Eric       | 1739 S. 13th West         | Missoula      | MT | 59801 | 9811 |              |                                     |
| Robinson    | Jason      | 1117 Lynn Ave.            | Billings      | MT | 59102 | 9810 |              |                                     |
| Rodriguez   | Augusto    | 811 Lincoln Dr - MAFB     | Great Falls   | MT | 59405 | 9905 |              |                                     |

|           |             |                      |             |    |       |      |
|-----------|-------------|----------------------|-------------|----|-------|------|
| Schaubel  | Freddie Jay | 725 2nd Ave S. #1    | Great Falls | MT | 59401 | 9910 |
| Seamons   | Kyle        | 1145 Willow Creek Rd | Corvallis   | MT | 59828 | 9901 |
| Skovron   | James       | 134 29A Ave. NE      | Great Falls | MT | 59404 | 9905 |
| Smith     | Kevin       | 827 Circle           | Billings    | MT | 59102 | 9905 |
| Spaulding | J.B.        | 236 So. Roberts      | Helena      | MT | 59601 | 9910 |
| Stripes   | James       | 305 SW State         | Pullman     | WA | 99163 | 9907 |
| Stuckey   | Richard     | 304 32nd St. S.      | Great Falls | MT | 59405 | 9907 |
| Suits     | Thad        | 2015 4th Ave N.      | Great Falls | MT | 59401 | 9910 |
| Sweeney   | Tim         | 420 S. Cooke St.     | Helena      | MT | 59601 | 9907 |
| Thompson  | John        | 301 Stewart Court N. | Billings    | MT | 59105 | *    |
| Valdon    | Pete        | Box 1118             | Chinook     | MT | 59523 | 9905 |
| Warnes    | Chris       | 219 Garnier #27      | Livingston  | MT | 59047 | 9909 |
| Willett   | Nathanael   | 122 1/2 3rd Ave N.   | Great Falls | MT | 59401 | 9905 |
| Zedekar   | Stanley     | 80 Chilchote         | Big Fork    | MT | 59911 | 9909 |
| Zolinkov  | Norma       | 270 Road 4           | Roundup     | MT | 59072 | 9911 |

771-0630  
896-1076

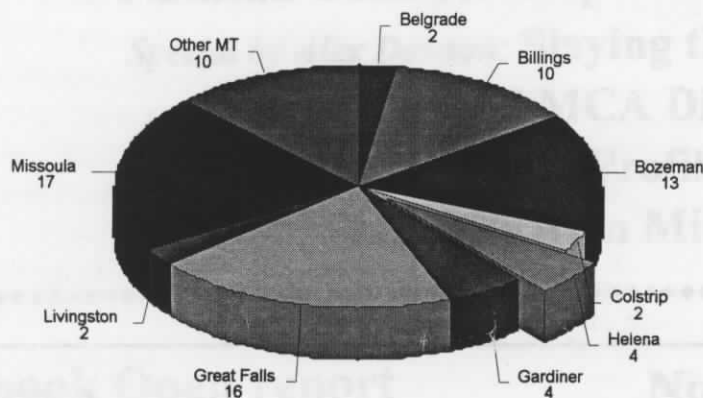
454-1960  
453-6160

suits@initco.net

## More pie? A look at the MCA's membership in recent years

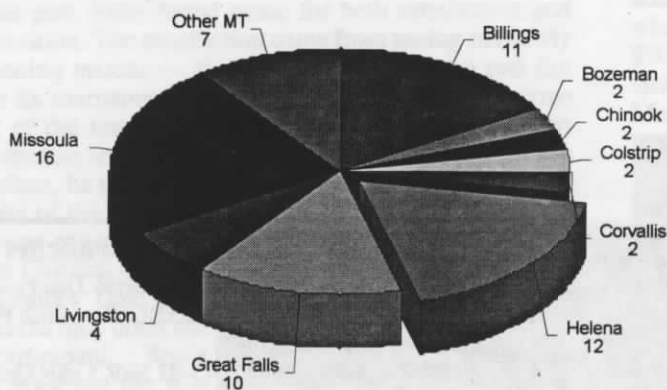
### The MCA Then

Resident members - Dec. 1994



### The MCA Now

Resident members - Dec. 1998



Not included are 15 current out-of-state memberships.

The pie charts at left depict the MCA resident membership distribution from four years ago and from today. A quick glance shows that they have some stories to tell.

First off, there is the tremendous boom in membership coming out of Helena, due mostly to the efforts of Mel Drake and Alex Dawson. Helena has gone from being barely on the charts to running a strong second place to Montana's perennial powerhouse chess town, Missoula. Kudos to Mel and Alex for their talents in finding new players in the Capital City.

Secondly, there is the disappointing drop in membership in Bozeman and Great Falls. Four years ago Great Falls registered eight new and unrated members, boosting its total to 16 members. All eight of those have either moved away or dropped out of chess since then. (Admittedly, this could be in part because here in Great Falls we like to shout "Die, patzer scum!" whenever we beat a newcomer.)

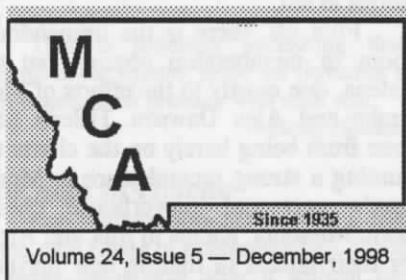
Herein lies the challenge that Helena players must now face: How do you keep your hard-won members coming back for more chess year after year?

For too many players, the inevitable disasters of a first tournament lead to disappointment and disillusionment. The stability in Missoula and Billings, as well as the overall stability in membership statewide, demonstrate that this disappointment can be overcome. All it takes is energy and commitment from one or two players in each town who get such a kick out of chess that they can't help sharing the fun with others.

This means that if Mel and Alex's energy is even half as enduring as it is inspiring, then Helena could become a Montana chess hub for years to come. ♣

## Montana Chess Association

Thad Suits  
2015 4th Ave N.  
Great Falls, MT 59401



### Tournament Rule Tip

It often happens, particularly in blitz chess, that a player will promote a pawn to a queen without actually replacing the pawn. Simply announcing that it is a queen and punching your clock is both bad etiquette and a violation of handbook Rule 8F7. There is no prescribed penalty for breaking this rule, but your opponent has the right to restart your clock immediately.

In those cases where a queen is not within easy reach, the same rule does allow you to stop *both* clocks in order to retrieve a queen (or upside-down rook). Just remember that it is your responsibility to secure the replacement piece *before* you restart your opponent's clock.

### Answer to "What's the Cruncher?"

*From Moore-Polette, 1998 Barto Memorial.* Dan Polette could have crunched Sherwood with 1...RxB!, after which the following lines are likely possibilities:

- a) 2.NxR Nxd4 3.Qg2 Qe6 4.Nd3 NxR 5.gxN Qe3+
- b) 2.QxR Rxd4+ Kf1 (otherwise mate or the win of the queen follows) QxR+

Instead, Dan went for 1...Qd6, and a couple of careless moves later the misplaced queen lost her life.

### Answer to "The Polgar Corner" - 1.Qe4