

MONTANA Chess News

The Montana Chess News is published for the Montana Chess Association, an affiliate of the US Chess Federation. The MCA is committed to promoting the game of Chess in Montana through education, competition, and providing forums of discussion. Subscription via membership in the MCA is available for the following: \$6 per year regular and \$3 per year junior.

Published by Lone Wolf Publishing, PO Box 3984
Missoula, MT 59806 (406) 251-6228
<http://www.montana.com/lonewolf/>

November - December Issue 1997



Support Chess in Montana

Montana Chess Associations Newsletter

From the Editor:

First off, let me welcome everyone to another edition of the Montana Chess Association newsletter. This issue in particular is an excellent example of the kind of teamwork that can turn this publication into one of the best available. As I write this, my wife is assisting with keying in tournament tables. Thad Suits helped immeasurably by entering and annotating a large part of the games found in this issue! Sherwood Moore, who is responsible for gathering all pertinent information for the newsletter, and his tireless efforts in previewing and correcting score sheets. Thank you all for your contribution and for making my hectic Fall a little more manageable!

— Michael

Editors Note:

I am sorry to say that I experienced some difficulty with inserting some of the diagrams for games annotated in this issue. Please accept my apology and note that this will be corrected by the next issue.

Michael

Suits Wins Championship

Thad Suits won all five of his games to take first place at the 1997 State Closed Championship, held on Sept. 20-21 in Great Falls. The field of ten players was weakened by the last-minute withdrawals of both Zygmund Mayer and John Thompson. Nevertheless, Suits racked up an impressive 2230 performance rating en route to his first championship title. Below are

selected games from the Closed, as well as from its satellite tournament, the Barto Memorial.

Tournament notes by Thad Suits

WHITE: Howard Hoene BLACK:
Thad Suits. Caro-Kann

Here I lose the exchange but find some juicy complications.

1. e4 c6 2. d4 d5 3. e5 Bf5 4. Be2

Out of book. The bishop is passively placed.

4. ... e6 5. g4 Bg6 6. Nd2 c5

The thematic freeing move in the Caro-Kann.

7. c3 Nc6 8. Ngf3 cxd4 9. cxd4 Bb4 10. a3 Ba5 11. b4 Bb6 12. Bb2 a6 13. Nf1

The knight seems to be headed the wrong way. c5 looked like a good post.

13. ... Nge7 14. Ne3 Be4 15. O-O Rc8 16. Nd2

Attacking the pesky bishop, but removing a guard for the pawn.

16. ... Nxd4 17. Nxe4 dxe4 18. Nc4 O-O 19. Nd6

Gaining a good post for the knight and time to recover the pawn.

19. ... Nxe2+ 20. Qxe2 Rc7 21. Qxe4 Nd5 22. Rac1 Qb8 23. Rxc7 Bxc7 24. Nc4 Rd8 25. Kg2 b5 26. Nd2 Qb7

26... Nf6 is good here. E.g. 26...Nf6 27. exN RxN 28. Bc3 Ra2. Running low on time, and oblivious to king-side dangers, black wastes two precious moves.

27. Nf3 Qb8 28. h4 Ne7 29. h5 (Diagram 1) 29. ... g6?

Probably the worst move on the board. 29...h6 would have held the fort.

30. Bc1 Kh8?

Another time-trouble beauty. Counter-punching with Rd5 would have held a cramped but secure position.

31. Bg5 Nd5

Forced. Defending the knight leads to a quick mate on g7.

32. Bxd8 Qxd8 33. Rh1 g5 34. Ne1 Nf4+ 35. Kf3 Qd2

The tempting check 35...Qd1+ leads to nothing. Black is hoping for a misstep. 35...Qd5, then fighting for a draw was probably the "best" plan, but that seemed too tedious.

36. Ng2 Qc3+ 37. Ne3 Qxe5 38. Qa8+

The misstep. Trading queens and grinding out the endgame would have avoided the counterplay that ensues due to the white king being hemmed in by his own pawn.

38. ... Bb8 39. Qxa6 h6 40. Qc8+ Kg7 41. Qc5 Qf6 42. Qxb5 Nh3+ 43. Ke2 Qb2+ 44. Kd3 Nxf2+ 45. Kc4 Qe2+ 46. Kc5 Qxe3+ 47. Kc4 Qd3+ 48. Kc5 Qxb5+

Seeing a winning move, I miss a mate in three. 48... Qc3+ 49. Kb6 Qc7+ 50. Ka7 Qa7++.

49. Kxb5 Nxb1 50. a4 f5 51. Kc5 fxc4 52. Kd4 g3 White resigns

Support Chess in Montana

Montana Chess Associations Newsletter

WHITE: Thad Suits BLACK: Jim Skovron. Colle

In this meeting of outgoing and incoming champions, I appear to be losing by move 22, but force resignation six moves later. We took turns with nervous draw offers during this one.

1. d4 d5 2. Bf4 c6 3. e3 Nf6 4. c3 Bf5 5. Nd2 Nbd7 6. Ngf3 h6 7. Qc1 e6 8. Be2 Nh5 9. Bg3 Nxc3 10. hxg3 Bd6 11. c4 a6 12. O-O Rc8 13. a4 g5 14. Qc3 h5 15. Bd3 Bxd3 16. Qxd3 f5 17. Rac1 Qf6 18. cxd5 exd5 19. Rfe1 h4 20. gxh4 g4!

A Skovron-style storming of the castle begins.

21. Ng5 Rxh4 (Diagram 2) 22. f4

The first of two moves that save White's hide.

22. ... Qg6 23. e4!

This move seizes the initiative. It sets up a sacrifice with which White finally takes advantage of Black's failure to castle.

23. ... fxe4 24. Ndx4 Kf8

Jim decides against accepting the sacrifice and the attack that would follow.

He gets the attack anyway.

25. Qg3 dxe4 26. Qxh4 Nf6 27. Qh8+ Qg8? 28. Qxf6+ Black resigns

WHITE: David Duke BLACK: Thad Suits. English

David generally knows and likes book moves as much as anyone, but here he is the first to diverge.

1. c4 e5 2. Nc3 Nf6 3. Nf3 Nc6

4. g3 d5 5. cxd Nxd5 6. Bg2 Nb6 7. O-O Be7 8. a3 O-O 9. b4 Bf5 10. d3 Bf6 11. Qb3

More usual is 11. Rb1, taking the pressure of the diagonal.

11. ... e4 12. dxe4 Bxe4 13. Rd1 Qe7 14. Be3 Rfd8 15. Bc5 Qe8 16. Rac1 Bf5 17. b5 Na5 18. Qb4 Nac4 19. e3

19. Nd4 looks more assertive.

19. ... Bxc3 20. Qxc3 Rxd1+ 21. Rxd1 Rd8 22. Nd4 (Diagram 3) 22. ... Qxb5!

A splashy way to win a pawn. If White accepts the queen sac with 23. NxQ, Black gets it back plus an edge after 23... RxR+ 24. Bf1 Bh3 25. Qd3 RxB+, etc. David saw all this, but forgot to deal with the more immediate threat to his bishop.

23. Rc1? Qxc5 24. Bf1 Be6 25. Nxe6 fxe6 26. Bxc4

Winning back the piece, but simplifying to a lost endgame.

26. ... Qxc4 27. Qxc4 Nxc4 28. Rxc4 Rc8

Black's extra pawn and queen-side majority carry the day, but not without some careful play.

29. Kg2 Kf7 30. e4 c5 31. Kf3 b5 32. Rc3 c4 33. Ke3 Rd8 34. f4 e5 35. f5 Rd4 36. h4 a5 37. g4 b4 38. axb4 axb4 39. Rc1 c3 40. g5 Ke7 41. h5 Rd6

This prevents a break-through by White, freeing Black's king to advance.

42. Rc2 Kd7 43. Ke2 Kc6 44. Rc1 Kc5 45. f6 gxf6 46. g6 hxg6 47. hxg6Rd7 48. Rd1 Rg7 49. Rg1 Kc4 50. Kd1 b3 51. Kc1

Ra7 White resigns

WHITE: Jim Skovron BLACK: David Duke. Queen Pawn Game

1. d4 e6 2. e4 c5 3. Nf3 Nf6 4. Nc3 d5 5. e5 cxd4 6. Nxd4 Nfd7 7. f4 Bc5

8. Na4 Qa5+ 9. Nc3 Qd8 10. Be3 a6 11. Qg4 Bxd4 12. Bxd4 O-O 13. Bd3 Nc6

14. Bf2 Nb4 15. O-O-O Nxd3+ 16. Rxd3 (Diagram 4)

White willingly gives up the bishop for the chance to lift the rook into play.

16. ... b5 17. Bh4 Qc7 18. Rg3 g6 19. Bf6 Nxf6 20. exf6 Qd8 21. Qg5 h6 22. Qe5 Bb7 23. Ne2 Rc8 24. Nd4 Qd7

Offering the trade with 24...Qc7 might have doused the fire. With all of black's defenders cut off the end cannot be far.

25. h4 Kh7 26. h5 Rfe8 27. hxg6+ fxg6 28. Rgh3 h5 29. Rxh5+ gxh5 30. Qxh5+ Kg8 31. Qh8+ Kf7 32. Qg7++

WHITE: Doug Hansen BLACK: Brian Bailey. Ruy Lopez

1. e4 e5 2. Nf3 Nc6 3. Bb5 d6 4. O-O Nf6 5. d3 Bg4 6. h3 Bd7 7. Bg5 Be7

8. c3 a6 9. Ba4 b5 10. Bc2 O-O 11. Nbd2h6 12. Be3 b4 13. d4

They say a thrust on the wing is best met by a thrust in the center.

13... bxc3 14. bxc3 exd4 15. cxd4 Nb4 16. a3 Nxc2 17. Qxc2 Bb5 (Diagram 5)

Black's bishop embarks on a fruitless and ultimately tragic adventure. In the

Support Chess in Montana

Montana Chess Associations Newsletter

meantime White exerts pressure on the weakpoints c7 and a6.

18. Rfc1 Rc8 19. a4 Be2 20. Ne1 Bh5 21. Qc6 Bg6 22. f3 Qd7 23. Qxa6 d5
24. e5 Nh7 25. Qc6 Qxc6 26. Rxc6 f5? 27. Rxc6 Black resigns

WHITE: Robert Martin BLACK: Doug Hansen

Doug blunders a piece but hangs tough for a draw.

1. Nf3 g6 2. c4 Bg7 3. g3 c5 4. Bg2 Nc6 5. Nc3 d6 6. O-O Bf5 7. d3 Qd7
8. Bd2 e5 9. e4 Bg4 10. Nd5 Nge7 11. Qa4 O-O 12. Nxe7+

White gives up the knight post too easily.

12. ... Qxe7 13. h3 Bxf3 14. Bxf3 Nd4 15. Qd1 a6 16. Bg2 b5 17. Bc3 Nc6
18. a3 Rab8 19. Qd2?

White cuts off his bishop's retreat. 19...b4 looks good about now, but Bob waits a move.

19. ... Qc7 20. f4 b4 21. axb4 cxb4 22. Bxb4 Nxb4 23. f5 Qc5+ 24. Kh2 Qd4
25. Rf3 Rfc8 26. Qe2 Qb6 27. Raf1 f6 28. fxg6 hxg6 29. h4 Nc6 30. Qd1 Qxb2
31. R3f2 Qd4

31...Qb7, then sliding the queen over for defense would have been stronger.

32. Qg4 Rf8 33. Qxc6 Ne7 34. Qg4 f5 35. Qg5 Rf6 36. exf5 Rbf8 37. Be4 d5
38. cxd5 Nxd5 39. h5 Kh7 40. Rf3 Bh6 41. Qh4 Ne3 42. R1f2 Qb6 43. g4 Rg8
44. Rxe3 Bxe3 45. Rg2 Bf4+ 46. Kh1 (Diagram 6) Qe3?

This invasion needed to be prepared with ...Bg5 first. Now White regains some material and finds an opening for a perpetual check.

47. Qxf6 Qh3+ 48. Kg1 Be3+ 49. Kf1 Rxc4 50. Qe7+ Draw

WHITE: Ron Erickson BLACK: Kevin Smith. Strange Sicilian

Drawmeister Ron got to the last round undefeated. Here is the first of his three draws.

1. Nf3 g6 2. e4 c5 3. c4 Bg7 4. d4 cxd4 5. Nxd4 Qb6

Premature.

6. Nb3 d6 7. Be3 Qc7 8. Bd4 Nf6 9. Nc3 a6 10. Nd5

The early queen sortie now means Black will have to accept an unfavorable trade.

10... Nxd5 11. Bxc7 Rg8 12. Bd4 Nb6 13. Rc1 Nc6 14. Be3 Be6 15. c5 Nd7 16. cxd6 Qxd6 17. Qxd6

Although White has the edge, it does not appear to be enough to warrant this simplifying trade.

17. ... exd6 18. Bc4?!

Ron has gone trade-happy. Besides the trade being favorable for black, Kevin is not forced to accept anyway.

18. ... Nde5 19. Be2 Bxb3 20. axb3 Ke7 21. O-O Rgc8 22. f4 Nd7
23. f5 Nce5 24. fxg6 hxg6 25. Bc4 Nc5 26. Bg5+ Ke8 27. Bf4 Nxc4
28. bxc4 Nxe4 29. Rfe1 f5 30.

Bxd6 Rc6 31. Ba3 Rac8 32. b3 b5

33. cxb5 Rxc1 34. Bxc1 axb5 35. Bb2 Rc2 36. Bd4 Ke7 37. Rd1 Ke6

38. Bg7 Nc3 39. Re1+ Kd5 40. Re5+ (Diagram 7) Draw

White's active bishop should compensate for Black's more active king.

WHITE: Ron Erickson BLACK: Howard Hoene, Jr. Four Knights

The Four Knights Defense has a reputation for dull, drawish play. This example is neither.

1. Nf3 Nc6 2. e4 e5 3. Nc3 Nf6 4. d4 Bb4 5. Qd3

ECO suggests instead either 5. d5 or 5.Nxe5.

5. ... exd4 6. Nxd4 Bxc3+ 7. bxc3 Ne5 8. Qe2 O-O 9. Bg5 d6 10. f3 c6 11. Bxf6

Giving up the pin and the minor exchange for no clear gain.

11. ... Qxf6 12. Qf2 c5 13. Nb3 Be6 14. Rd1 Rfd8 15. h4 Rac8 16. h5 h6
17. Rh4 Nc4 18. Rd3 Nb2 19. Re3 Na4 (Diagram 8)

Ganging up on c3. Unfortunately for Howard, Ron finds a double attack.

20. e5 Qg5 21. Rxa4 d5 22. f4 Qxh5 23. Rh3

Giving back the exchange. Even so, Howard never fully recovers.

23. ... Bxh3 24. gxh3 c4 25. Nd4 Rc5 26. Rxa7 b6 27. Qe3 Rb8 28. e6 f6
29. e7 Ra5 30. Qe6+ Kh7 31. Be2 Qg6 32. Rxa5 bxa5 33. Qf5 Re8 34. Qxc6+Kxc6

Support Chess in Montana

Montana Chess Associations Newsletter

35. Nc6 Kf7 36. Bf3 Black resigns

WHITE: Howard Hoene, Jr.
BLACK: Sherwood Moore. French Defense

Howard misplays the opening and Sherwood plays error-free chess to get the win. Howard went on to make it a "bookend" tournament, winning his first and last games.

1. e4 e6 2. f4 d5 3. e5 c5 4. Bb5+

ECO gives 4.Nf3 instead. The coming exchange leaves White weak on the white diagonal.

4. ... Nc6 5. Nf3 Qb6 6. Bxc6+ bxc6 7. O-O Ba6 8. Re1 Nh6 9. d4 (Diagram 9)

This gets White in trouble on the diagonal. The quieter 9. d3 would have allowed time to catch up in development.

9. ... cxd4 10. Nxd4 Nf5 11. c3 Bc5 12. Be3

This surrenders the rook, but the alternative, 12.Kh1 NxN 13.cxN Bxd4 keeps the pressure on the queen rook and threatens 14.Bf2, trapping the other rook too. Beware the slashing bishops!

12. ... Qxb2 13. Nxf5 Bxe3+ 14. Nxe3 Qxa1 15. Qb3 Bd3 16. Kf2 Bc4 17. Nxc4 dxc4
18. Qxc4 Qb2+ 19. Kf3 O-O 20. Rd1 Qc2 21. Qd4 Qxa2 22. Qc5 Qc2 23. Re1 Rfd8
24. Na3 Rd3+ 25. Re3 Rxe3+ 26. Qxe3 Qb3 27. Qc5 Qd1+ 28. Kg3 Qd3+ 29. Kh4 Qe4
30. g3 g5+ 31. Kxg5 Qf5+ 32. Kh4 h5 33. h3 Kh7 34. Qxc6 Rg8 35. Qf3 Qg6
36. g4 hxg4 37. hxg4 Rh8 38.

Nc4 Kg7+ 39. Kg3 Qh6 40. Qg2 Qh4+ 41. Kf3 Qh3+
42. Qg3 Qf1+ 43. Qf2 Rh3+
White resigns

The last round of the tournament brought out the gunfighter mentality in some. This next game, for instance, shows two players who were unusually quick on the draw.

WHITE: Brian Bailey Black: Kevin Smith. Hoogivz-Adam Attack

1. c4 g6 2. Nc3 Bg7 3. g3 Nf6 4. Bg2 Nc6 5. e3 O-O 6. Nge2 d6 Draw

Mundy Takes Barto Memorial

Jim Mundy scored a perfect five-for-five in winning the Barto Memorial, held as a satellite event for the State Closed. Haluk Beyenal took the second place trophy, his only defeat a round three loss to Mundy. Congratulations also to newcomer Freddie Schaubel, who scored two and a half points in his first tournament.

WHITE: William Furdell BLACK: Haluk Beyenal. English

After a solid opening, Bill misses a chance to gain the upper hand in the middle game.

1. c4 Nf6 2. g3 d5 3. cxd5 Nxd5 4. Bg2 c6 5. e4 Nb4 6. d4 e5 7. Ne2 exd4 8. a3 Qa5
9. O-O d3 10. Nf4 Nc2 11. b4 Bxb4 12. Ra2 Nd4 13. Qxd3 Be6 14. Nxe6 (Diagram 10)

This allows the knight to recapture. 14. axB QxR 15. QxN would have been stronger.

14. ... Nxe6 15. Bd2 Bxd2 16. Qxd2 Qxd2 17. Rxd2 Nd7 18. Rfd1 O-O-O 19. f4 Ndc5
20. Nc3 Rxd2 21. Rxd2 Rd8 22. Rxd8+ Kxd8 Draw

WHITE: Jim R. Mundy BLACK: Richard L. Stuckey. French Defense

Richard drops the exchange and throws in the towel.

1. e4 e6 2. d4 d5 3. e5 Bb4+

3... c5 is really the only move here.

4. c3 Be7 5. Qg4 g6 6. h4 f5 7. Qg3 Bf8 (Diagram 11)

A model of development on both sides! Seven moves into the game and only the white queen is out.

8. h5 Ne7 9. Be2 Rg8 10. hxg6 Rxd6 11. Bh5 Kd7 12. Bxg6 hxg6 13. Rh8 Black resigns

WHITE: John Coefield BLACK: Freddie Schaubel. Polish

White snatches some pawns, but Freddie finds counterplay that leaves John scrambling for the draw.

1. b4 e6 2. b5 d5 3. Bb2 Bd7 4. e3 c6 5. a4 cxb5 6. axb5 f6 7. d4 Ne7
8. c4 Nf5 9. c5 Be7 10. b6 Nc6 11. Bd3 O-O 12. Bxf5 exf5 13. Nc3 Be6
14. Nb5 axb6 15. Rxa8 Qxa8 16. Nc7 Qc8 17. cxb6 Bd6 18. Nxe6 Qxe6 19. Bc3 Re8
20. Ne2 g5 21. Qb1 f4 22. Bd2 fxe3 23. Bxe3 Bb4+ 24. Kd1?!

White wants to give the rook some air, but 24. Kf1 instead would have sheltered the

Support Chess in Montana

Montana Chess Associations Newsletter

of potential threats at f2.
6. d3 h5 7. g3 g5? (Diagram)
This is a blunder, but Freddie may be forgiven for not thinking so, considering what it leads to.

8. Nd2?
Oops! The threat to the knight was a mirage. 8. Nxc5 would have been great for white. Better luck next time, Jason.
8... Qxf2++

Jim drops a pawn and Kip drops a queen in this interesting game.

WHITE: Kip Stubberud BLACK: Jim Skovron – Double Fianchetto

1. Nf3 d5 2. g3 Nf6 3. Bg2 c6 4. b3 Bf5 5. Bb2 Nbd7 6. O-O e5?

Jim hallucinates. The pawn is up for grabs.

7. Nxe5 Bd6 8. d4
This entombs the dark bishop and gives away the e4 square to the black knight.

8. Nf3 looks more solid.
8... Qc7 9. Nxd7 Qxd7 10. Nd2 O-O-O 11. c4 h5

A typical Skovron counter-punch. Just when you think you have Jim where you want him he finds some belligerent way to ruin your composure.

12. Rc1 Kb8 13. cxd5 cxd5 14. Nf3 Qe7 15. Re1

Although 15. Ne5 looks unnecessarily complicated from white's point of view, it is probably better.

15... Ne4 16. Nh4 Bh7 17. f4
This gives back the pawn, but by this time black is well-poised to storm the

castle, so the quieter alternative 17. e3 is not much better.

17... Bxf4 18. e3 Bd6 19. Qxh5? (Diagram)

Hope that poisoned pawn at least tasted good going down, Kip.

17... g5! 20. Nf3? Bg6 21. Qg4 f5
White resigns

Jim nets his second queen in as many games.

WHITE: Jim Skovron BLACK: Mike Jensen – King's Indian Defense

1. e4 c6 2. d4 d6 3. c4 Nf6 4. Nc3 g6 5. Nf3 Bg7 6. Be2 Nbd7 7. O-O O-O 8. e5 Ne8 9. Bf4 Nb6 10. h3 d5 11. c5 Nd7 12. Qc2 b6

13. b4 e6 14. Rfe1 f6 15. Bd3 fxe5 16. Nxe5 Nxe5 17. Bxe5 Bxe5

18. Rxe5 Qf6 19. Rae1 Ng7 20. R1e3 Qh4 21. g4

With all white's pieces nearby, he can afford to weaken the kingside in order to box in Black's queen.

21... Bd7 22. Qe2 Rf4 23. b5 Raf8

Or just 25... Rxd4 right away.

24. Nd1 Rxd4 25. bxc6 Bxc6 26. cxb6 axb6 27. Rf3 Bd7 28. Rxf8+ Kxf8

29. Qe3 Rb4 30. Nc3 Qf6 31. Ne2 Rb2 32. Qd4 Rxa2? (Diagram)

For one move, at least, Mike gets to be two pawns ahead.

33. Rf5! Black resigns

Kip watches a commanding lead evaporate thanks to a pesky knight. This game won the best upset prize for Brad.

WHITE: Kip Stubberud BLACK: Brad Bodie – Stonewall

1. d4 d5 2. e3 Nc6 3. f4 Bf5 4. Nf3 Nb4 5. Na3 e6 6. c3 Nc6 7. Qa4 Bd6

8. Ba6 Qb8 9. c4 Bxa3 10. bxa3 f6 11. Qb5 bxa6 12. Qxc6+ Kf7 13. cxd5 Ne7

14. dxe6+ Bxe6 15. Qxa6
Kip is two pawns ahead.

15. ... Nd5 16. O-O Nb6 17. Nd2 Re8 18. e4 Bc8 19. Qe2 Bb7 20. Qh5+ Kg8

21. e5 Qd8 (Diagram) **22. Nf3**

Better was 22. Bb2 Na4 23. ef6 (threatening 24. f7+) Qxd6 24. Qb5.

23... Bxf3 23. Qxf3 Qxd4+
Kip is one pawn ahead.

24. Be3 Qd5 25. Qxd5+Nxd5 26. Bd4 c5 27. Bxc5 fxe5 28. fxe5 Rxe5 29. Rfe1 Rxe1+

30. Rxe1 a6 31. Rd1 Nc3 32. Rd7 Rb8 33. g4 Rb5 34. Be3 Ra5 35. Kg2 Rxa3

Kip is zero pawns ahead.

36. Bd4 Rxa2+
Kip is negative one pawns ahead.

37. Kh3 Ne4 38. Rxc7+ Kf8 39. g5 Ra3+ 40. Kg4?

This lines up king and bishop in a dangerous way. Distasteful as it must have

been, retreating the king and playing for a draw would have been preferable.

40. ... Ra4 41. Rd7 Nc5 42. Rd5 Ne6 43. Kf5 Rxd4 44. Re5 Ng7+

(Diagram) **White resigns**

It's a pretty mate in two from here.
45. Kf6 Rf4+ 45. Rf5 RxR++.

Doug shows he knows his end game theory by mating with bishop and knight.

WHITE: Nick Doulas BLACK: Doug Hanson – King's Indian Attack

1. Nf3 g6 2. g3 Bg7 3. Bg2 c5 4. O-O Nc6 5. d3 d5 6. Nbd2 e5 7. e4 d4

8. Re1 Nge7 9. Nc4 b5 10. Ncd2 Be6 11. Ng5 Qd7 12. Nxe6 Qxe6 13. a3 O-O

14. h4 Qd6 15. c3 dxc3 16. Nf3 cxb2 17. Bxb2 Nd4 18. Nxd4 cxd4 19. Qb3 Nc6

20. Qxb5 Rfb8 21. Qd5 Bf8 22. Qxd6 Bxd6 23. Bc1 Rb3 24. Rd1 Rab8 25. Bh6 Bxa3

26. f4 exf4 27. Bxf4 R8b7 28. e5 R7b6 29. Bd5 Rc3 30. e6 fxe6 31. Bxe6+ Kg7

32. Rab1 Rxd3 33. Rxd3 Rxb1+ 34. Kg2 Bc5 35. Rf3 a5 36. Bg5 Rb7 37. Bf6+ Kf8

Support Chess in Montana

Montana Chess Associations Newsletter

38. Bxd4+ Ke7 39. Rf7+ Kxe6 40. Rxb7 Nxd4

41. Rxh7 a4 42. Rh6 Kf6 43. h5 Kg5 44. Rxc6 Kxh5 45. Ra6 a3 46. Ra5 Nb3

47. Ra4 Kg5 48. Kf3 Bd6 49. g4 Nc1 50. Ra5+ Kf6 51. g5+ Ke6 (Diagram) 52. Ra6

Nick misses the drawing move 52. g6! Possible continuations then would be:

52...Kf6 53. Ra6 Ke5 54. Rxa3. Or 52... a2 53. Ra6! Ke7 54. Ra7+ Kf8 55.

Ke4 Bc5 56. Ra6 Kg7 57. Kf5. Or 52...Nd3 53. Rg5!

52... a2

More accurate is 52... Nd3. The text move would still allow a transposition

to a drawing line with 53. g6!

53. Kg4 Kd5 54. Kf5 Be5 55. g6 a1=Q 56. Rxa1 Bxa1 57. Kg5 Bg7 58. Kf5 Nd3

59. Kg5 Ke5 60. Kh5 Kf5 61. Kh4 Kxg6

And the move-counting begins. USCF rules state that after 50 consecutive moves

without a pawn move or a capture, a player can claim a draw. Although knight

and bishop versus king is a "book win", few of us have ever had to execute one

in tournament play.

62. Kg4 Be5 63. Kf3 Kf5 64. Ke3 Nc5 65. Kf3 Bf4

Phase one: Drive the enemy king to the side of the board.

66. Ke2 Ke4 67. Kf2 Nd3+ 68. Ke2 Bh2 69. Kd2 Bg3

Doug lets the king out, squandering a few precious moves.

70. Kc3 Ne5 71. Kd2 Kd4 72. Ke2 Kc3 73. Ke3 Be1 74. Ke4 Bg3 75. Kd5 Kd3

76. Ke6 Kd4 77. Kf6 Kd5 78. Kg5 Ke6 79. Kh5 Kf5 80. Kh6 Bh4

Phase two: Force the king to the corner controlled by your bishop.

81. Kg7 Bg5 82. Kf8 Ke6 83. Ke8 Bf6 84. Kf8 Kd7 85. Kg8 Ke7 86. Kh7 Kf7

87. Kh6 Be7 88. Kh5 Ke6 89. Kh6 Kf6 90. Kh5 Kf5 91. Kh6 Nd3 92. Kh5 Bf6

93. Kh6 Nf4 94. Kh7 Nh5 95. Kg8 Kg6 96. Kf8 Ng7 97. Kg8 Be7 98. Kh8

At last the king is in the corner. Doug makes one more misstep, but then

it's all over, with nine moves to spare.

98. ... Nh5? 99. Kg8 Ng7 100. Kh8 Nf5 101. Kg8 Nh6+ 102. Kh8 Bf6++

Bill hangs tough with his English Opening but falls to the power of the two bishops.

WHITE: Bill Furdell BLACK: Kip Stubberud – English

1. c4 Nf6 2. g3 c6 3. Bg2 d5 4. b3 e5 5. Bb2 Bd6 6. e3 Be6 7. d3 O-O

8. Ne2 Nbd7 9. O-O dxc4 10. dxc4 Qe7 11. a3 a5 12. Nbc3 Rfd8 13. Qc2 Nb6

Threatening ...a4 and prompting a weakening move. Ignoring it with 14. Re1 might have produced some counterplay.

14. a4 Nbd7 15. Rfd1 Nc5 16. Ba3 Rd7 17. Bxc5 Bxc5

As Kip would say, black has been saddled with the two bishops.

18. Rxd7 Qxd7 19. Rd1 Qe7 20. Rd2 Rd8 21. Qd1 Rxd2 22. Qxd2 Bf5 23. h3 h5

24. Kh2 Bb4 25. Qb2 Qd6 26. Nc1 Ba3 27. Qa1 Bc2 (Diagram)

28. N1a2

28. Qa2 might have held out longer.

28. ... Bxb3 29. Qb1 Bxc4 30. Qxb7 Qd2 31. Qc8+ Bf8 32. Qxc6 Bxa2

33. Ne4 Nxe4 34. Qxe4 Qxf2 35. h4 Bc5 36. Qa8+ Kh7 37. Qe4+ g6

38. Qb7 Bxe3 39. Qf3 Qg1+ 40. Kh3 Be6+ 41. g4 hxg4+ White resigns

Paul hurls a bunch of pawns at the castled king and gets a mating attack.

WHITE: Kevin Brownlee BLACK: Paul Motta – Queen Pawn Counter Gambit

1. e4 e5 2. Nf3 d5 3. exd5 Bd6 4. Nc3

In this gambit white usually plays an early d4, preparing to develop while provoking the black pawn to advance. Kevin goes a different route.

4. ... Nf6 5. Bb5+ Bd7 6. Bxd7 Nbx7 7. d3 h6 8. O-O O-O 9. Be3 Nb6

10. Qd2 Nbx5 11. Nxd5 Nxd5 12. c3 f5 13. Qe2 Qe7 14. Bd2 Rae8 15. Rfe1

A time waster. With black playing aggressively on the kingside, that rook will

be needed for defense.

15. ... Qf7 16. Rf1 (Diagram) e4 Sending the knight on a long journey that gives black ample time to mount an attack.

17. Nd4 c5 18. Nb5 Bb8 19. Na3 g5 20. Nc2 Kh7 21. g3 Nf6 22. Ne3 f4

23. Ng2 f3 24. Qe3 Qh5 White resigns

There is no defense against the multiple mate threats at black's disposal.

Don wins a piece to secure a draw.

WHITE: Don Price BLACK: Kevin Brownlee – Polish

1. Nf3 d5 2. b4 Bg4 3. Bb2 Nd7 4. d4

This blocks the bishop unnecessarily.

4. ... e6 5. a3 Ngf6 6. e3 Bd6 7. Nbd2 O-O 8. c4 c6 9. Be2 Bxf3

10. Nxf3 dxc4 11. Bxc4 Qc7 12. O-O Rfe8 13. Re1 Ng4 14. g3

Support Chess in Montana

Montana Chess Associations Newsletter

Ngf6 15. e4 e5

16. Qb3 Nb6 17. Rac1 Nxc4 18. Rxc4 exd4 19. Rxd4 Bf8 20. e5 Nd5 21. Qc2 g6? (Diagram)

Planning to fianchetto while blocking any possible mate at h7. Don has set up a nice tactical shot, however, which gains the upperhand. 21. ... Rad8 was called for.

22. Rxd5 Qb6 23. Rd3 Rad8 24. Red1

And Don, although a piece ahead, decides to call a draw good enough.

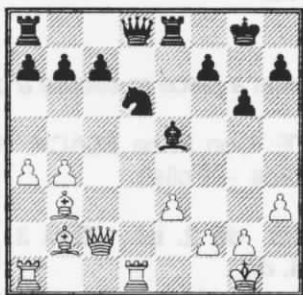
Draw agreed

Erickson, Ron - Bush, Casey
Oregon Open, , 1997

1. Nf3 d5 2. b4 Nf6 3. Bb2 g6 4. e3 Bg7 5. c4 0-0 6. Be2 Nbd7 7. d4



7... dc 8. Bxc4 Nb6 9. Bb3 Bg4 10. h3 Bf5 11. Nbd2 Ne4 12. 0-0 Nd5 13. Nxe4 Bxe4 14. Ng5 Nf6 15. Nxe4 Nxe4 16. Qc2 Nd6 17. Rfd1 Re8 18. a4 e5 19. de Bxe5

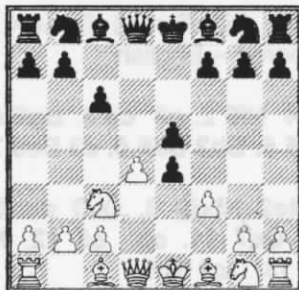


20. Rd3 Rc8 21. Rad1 Qh4 22. Bxe5 Rxe5 23. Rxd6 Rg5

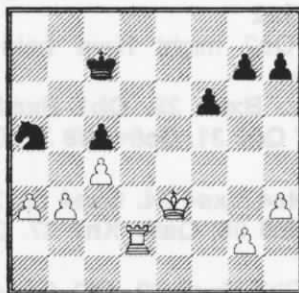
24. Bxf7+ Kxf7 25. Rd7+ Ke8 26. Qc3 Rf5 27. Qh8+ Rf8 28. Qe5+ 1:0

McCourt, Dan - Jensen, Mike
1st Fall Open, , 1997

1. d4 d5 2. e4 c6 3. Nc3 de 4. f3 e5



5. de Qxd1+ 6. Kxd1 ef 7. Nxf3 Be6 8. Nd4 Bg4+ 9. Be2 Bxe2+ 10. Kxe2 Bb4 11. Ne4 Na6 12. a3 Bf8 13. Be3 0-0-0 14. Rad1 Nc7 15. c4 f6 16. Nf5 Ne8 17. Rxd8+ Kxd8 18. Rd1+ Kc8 19. Ned6+ Nxd6 20. Nxd6+ Bxd6 21. ed b6 22. d7+ Kd8 23. Bf4 Ne7 24. Bb8 Ng6 25. Bxa7 Kc7 26. Bxb6+ Kxb6 27. d8Q+ Rxd8 28. Rxd8 Ne5 29. b3 Kc7 30. Rd2 c5 31. h3 Nc6 32. Ke3 Na5

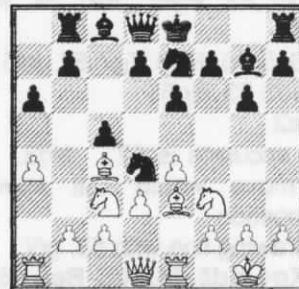


33. Rd3 Nc6 34. Ke4 Ne5 35. Rd5

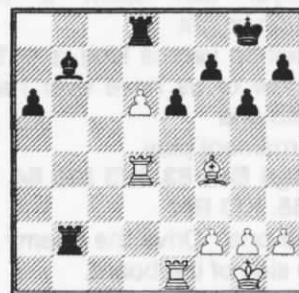
Nd7 36. Rxd7+ Kxd7 37. Kd5 f5 38. a4 g5 39. Ke5 f4 40. Kf5 h6 41. h4 gh 42. Kg4 Ke6 43. Kxf4 Kf6 44. Kg4 1:0

Gisselbeck, Don - Erickson, Ron
1st Fall Open, , 1997

1. e4 c5 2. Nc3 Nc6 3. Be4 g6 4. Nf3 Bg7 5. 0-0 e6 6. Re1 a6 7. a4 Rb8 8. d3 Nge7 9. Be3 Nd4



10. e5 Nef5 11. Bf4 0-0 12. Nxd4 Nxd4 13. Ne4 b5 14. Ba2 ba 15. c3 Nb3 16. Bxb3 Rxb3 17. Nxc5 Rxb2 18. Rxa4 Qb6 19. d4 Bb7 20. Nxd7 Qc6 21. Nf6+ Bxf6 22. d5 Qxc3 23. ef Qxf6 24. d6 Rd8 25. Qd4 Qxd4 26. Rxd4



26... Rc2 27. d7 Bc6 28. Red1 Bd5 29. Rxd5 ed 30. Rxd5 Rc4 31. g3 a5 32. Bg5 Ra8 33. d8Q+ Rxd8 34. Bxd8 a4 35. Ra5 h6 36. Bf6 g5 37. Kg2 Rc6 38. Bd4 Rc4 39. Be3 Kh7 40. f4 Rc3 41. Kf3 a3 42. Ke4 gf 43. Bxf4 Rc2 44. h4 a2 45. Be5 Kg6 46. Bd4 Re2+ 47. Kf4 Rd2 48. Ke3 Rg2 49. Kf3 Rd2 50. Ra4 Rxd4 51. Rxa2 1/2:1/2

Support Chess in Montana

Montana Chess Associations Newsletter

Wabinsky, John - McCourt, Chris
1st Fall Open, , 1997

1. e4 g6 2. g3 Bg7 3. Bg2 Nc6 4. Ne2
Nf6 5. d4 d6 6. 0-0 0-0 7. d5



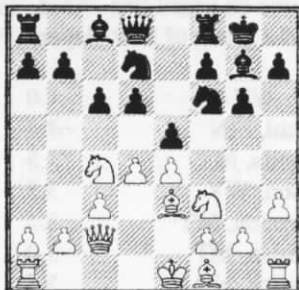
7... Ne5 8. f4 Ned7 9. Nd2 Nb6 10.
Nc3 c6 11. Qe2 cd 12. ed Bf5 13.
Nb3 Rc8 14. Be3 Nfxd5 15. Nd4
Nxc3 16. bc Qd7 17. Nxf5 Qxf5 18.
Bxb6 ab 19. Rab1 Rxc3 20. Be4
Qc5+ 21. Qf2



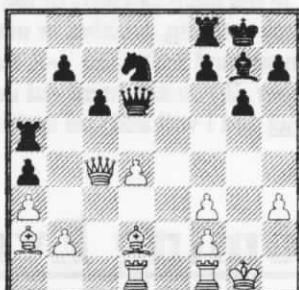
21... Bd4 22. Bd3 Bxf2+ 23. Rxf2
Rc8 24. f5 Qe3 25. Kf1 Rxd3 26. cd
Qxd3+ 0:1

Erickson, Ron - Jensen, Mike
1st Fall Open, , 1997

1. Nf3 g6 2. e4 d6 3. d4 Bg7 4. c3 Nf6
5. Qc2 c6 6. h3 Nbd7 7. Be3 0-0 8.
Nbd2 e5 9. Nc4



9... ed 10. cd Nxe4 11. Qxe4 d5 12.
Qc2 dc 13. Bxc4 Nb6 14. Bb3 a5 15.
a3 a4 16. Ba2 Bf5 17. Qc5 Be4 18.
Bg5 Qc7 19. 0-0 Bxf3 20. gf Nd7 21.
Qc4 Qd6 22. Rad1 Ra5 23. Bd2



23... Rh5 24. Bb4 Qf4 25. Be7 Rxh3
26. Bd6 Qxd6 27. Rf1 Qh2+ 28. Kf1
Rxf3 29. Rd2 Qh1+ 0:1

Support Chess in Montana

Montana Chess Association Newsletter

tournament would end with a clear winner. The game on board five ended, then four, three, two, and finally the crucial match was resolved – in Matous's favor, ½ point ahead of a group of four players. Prizes are as follows:

1 st :	Ron Matous	Kelly, WY	4.0	\$57.00
2 nd -5 th :	Tom Taylor	St. Paul, MN	3.5	\$11.50
2 nd -5 th :	Romie Carpenter	Missoula, MT	3.5	\$11.50
2 nd -5 th :	John Carr	Jackson, WY	3.5	\$11.50
2 nd -5 th :	Jim Mundy	Livingston, MT	3.5	\$11.50
1 st U1700	Haluk Beyenal	Bozeman, MT	3.0	\$17.00
2 nd U1700	Arman Goplen	Bismarck, ND	2.5	\$9.00
1 st U1300	Jerry Mundy	Livingston, MT	2.0	\$3.00
Biggest Upset	Arman Goplen	- 1 st round draw versus Matous		\$2.00

Carpenter, Mundy and Beyenal all earned Montana Grand Prix points.

This tournament was sponsored by the University Chess Club of Montana State University, which has recently reorganized. Our club currently has about a dozen active members, about half of which are current USCF members. We meet from 8 – 10 PM on Thursday evenings during the school year, in the main cafeteria of the Strand Student Union Building. If you are in the Bozeman area, you are welcome to stop by at any meeting, whether or not you are a student at MSU. We plan to hold occasional rated and unrated evening blitz tournaments and 3-SS G30 ¼-K tournaments. Another rated weekend tournament in the early spring is also possible... more details later. If you are interested in learning about our activities and upcoming events email me at shrike@montana.campus.mci.net and I will add you to the list for the club email newsletter.

Upcoming Events

Missoula County G30 Championship.....November 22nd, 1997

G30, The Shack, 222 W. Main, Missoula, Montana. Reg: 11:15 or forfeit 1st round. Rds: 11:30, 1, 2:30, 4, 5:30 Prizes (based on 20 entries) 1st = \$30, 2nd = \$25, 3rd = \$20, 4th = \$10, \$5 Shack GC for best Bird, Polish, Larsen & Kings Gambit Openings. MCA membership for best <17. Send Advance Entries to: Greg Nowak, Hellgate Station, PO Box 8572, Missoula, MT 59807 Or see Greg in person, at the Java Jungle (just inside of the main entrance to the Library) Mon – Fri, 301 E. Main from 4 – 6 PM ½ pt bye available for round 1 w early entry!

2nd Flathead Chess Championship.....December 6th, 1997

5Swiss G/30, Sun Flower Bakery, 209 Main, Polson, Montana Reg: 10:45 (late registry forfeits the 1st round) Rnds: 11:30, 1, 2:30, 4, 5:30. ½ of entry fees go towards Prize Fund: 1 – 4 Cash Prizes, 5 – 7 Other Prizes EF: \$6 advance adult <17 \$4 advance...\$4 more at the door. Send Advance Entries to: Greg Nowak, Hellgate Station, PO Box 8572, Missoula, MT 59807 Or see Greg in person, at the Java Jungle (just inside of the main entrance to the Library) Mon – Fri, 301 E. Main from 4 – 6 PM ½ pt bye available for round 1 w early entry!

Santa Claus G15 Plus!.....December 27th, 1997

G15 Goldsmith's, 809 E. Front Street, Missoula Montana. Reg: 12:45 Rds: TBA ½ of all entries go towards Prize Fund. Cash Prizes 1-4, other prizes 5 – 7 EF: \$7 advance \$10 at door. <17 \$5 advance \$7 at door. Send Advance Entries to: Greg Nowak, Hellgate Station, PO Box 8572, Missoula, MT 59807 Or see Greg in person, at the Java Jungle (just inside of the main entrance to the Library) Mon – Fri, 301 E. Main from 4 – 6 PM

ELSS Bonus.....December 7th, 1997

G8 Bonus Tourney. Goldsmith's, 809 E. Front Street, Missoula Montana. Tournament to immediately follow the Santa Claus G15. Rds: TBA ½ of entries go towards Prize Fund. Cash Prizes 1 – 4, other prizes 5 – 7 EF: \$5 (1/2 off of entry fee if you prepay both events in advance!) Send Advance Entries to: Greg Nowak, Hellgate Station, PO Box 8572,

Support Chess in Montana

Montana Chess Association Newsletter

1997 Chinook Open -- Final Standings

#	Name	Rtnq	Rd 1	Rd 2	Rd 3	Rd 4	Rd 5	Total
1	Thad Suits	1949	W9	W6	W4	W3	D2	4.5
2	James J. Skovron	1910	H---	W8	W12	W5	D1	4.0
3	Paul S. Motta	2003	D8	W7	W11	L1	D4	3.0
4	Brad Bodie	1675	W16	W5	L1	D12	D3	3.0
5	Kip H. Stubberud	2011	W10	L4	W13	L2	W9	3.0
6	Romie Carpenter	1936	W14	L1	H---	W10	D7	3.0
7	Keith Brownlee	1739	W17	L3	D9	W15	D6	3.0
8	Patrick McDonald	1640	D3	L2	W14	L11	W15	2.5
9	Donald M. Price	1340	L1	W17	D7	W16	L5	2.5
10	Douglas J. Hansen	1657	L5	W14	D15	L6	W13	2.5
11	Ron Erickson	1831	W15	D12	L3	W8	U---	2.5
12	J. Michael Jensen	1969	W13	D11	L2	D4	U---	2.0
13	William J. Furdell	1364	L12	W16	L5	W17	L10	2.0
14	Nick J. Doulas	1258	L6	L10	L8	B---	W16	2.0
15	Richard L. Stuckey	1253	L11	B---	D10	L7	L8	1.5
16	Frederick J. Schaubel	unr.	L4	L13	W17	L9	L14	1.0
17	Jason N. Robinson	unr.	L7	L9	L16	L13	B---	1.0

1997 Montana State Closed -- Final Standings

#	Name	Rtnq	Rd 1	Rd 2	Rd 3	Rd 4	Rd 5	Total
1	Thad Suits	1949	W2	W6	W4	W7	W5	5.0
2	Douglas J Hansen	1681	L1	D5	D8	W10	W4	3.0
3	Sherwood Moore	1675	L4	D9	W10	W6	D8	3.0
4	James J Skovron	1910	W3	W7	L1	D5	L2	2.5
5	Ron Erickson	1831	D9	D2	W6	D4	L1	2.5
6	Howard F Hoene Jr	1835	W8	L1	L5	L3	W7	2.0
7	David A Duke	1859	W10	L4	W9	L1	L6	2.0
8	Robert A. Martin	1610	L6	D10	D2	D9	D3	2.0
9	Kevin Smith	1472	D5	D3	L7	D8	D10	2.0
10	Brian W Bailey	1660	L7	D8	L3	L2	D9	1.0

1997 Barto Memorial -- Final Standings

#	Name	Rtnq	Rd 1	Rd 2	Rd 3	Rd 4	Rd 5	Total
1	Jim R Mundy	1780	W7	W3	W2	W5	W4	5.0
2	Haluk Beyenal	1535	W4	W6	L1	W7	D3	3.5
3	William J Furdell	1364	W5	L1	D4	B---	D2	3.0
4	Richard L Stuckey	1253	L2	B---	D3	W6	L1	2.5
5	Frederick Schaubel	unr.	L3	D7	W6	L1	B---	2.5
6	Nick J Doulas	1209	B---	L2	L5	L4	W7	2.0
7	John Coefield	1379	L1	D5	B---	L2	L6	1.5

Support Chess in Montana

Montana Chess Association Newsletter

Milky Way Open

Name	Rating	Round 1	Round 2	Round 3	Round 4	Round 5	Total
Greg Nowak	2199	L3	W	W8	W2	W4	4
Rudy Katzl	1950	W8	W3	W4	L1	W5	4
Hans Anderson	1690	W1	L2	W5	D4	W8	3.5
Paul Svelmoe	2000	W7	W5	L2	D3	L1	2.5
Paul Mitchell		W10	L4	L3	W7	L2	2
Dale Gross					W8	W7	2
Bob Leader		L4	L8	W11	L5	L6	1
Tyler Gillespie		L2	W7	L1	L6	L3	1
Ben Andersen		D					0.5
Adam Mason		L5					0
Ted Fisher				L7			0

Goldsmith's Ice Cream 5 min Social

Name	Round 1	Round 2	Round 3	Round 4	Round 5	Round 6	Round 7	Round 8	Round 9	Round 10	Round 11	Total
Greg Nowak		W-D	W-W	W-W	W-W	W-W	W-L	W-W	W-W	W-W	W-W	18.5-1.5
Hans Anderson	L-D		L-L	W-W	W-W	W-W	W-W	W-W	W-W	W-W	W-W	16.5-3.5
Dale Gross	L	W-W		L-W	W-W	W-L	L-O	W-W	W-W	W-W	W-W	15-5
Dan McCourt	L-L	L-L	W-L		L-D	W-W	W-W	W-W	W-W	W-W	W-W	13.5-6.5
Tyler Gillespie	L-L	L-L	L-L	W-D		W-L	W-W	W-W	W-W	W-W	W-W	12.5-7.5
Eric Robertson	L-L	L-L	W-L	L-L	L-W		W-W	W-W	L-W	W-W	W-W	W11-L9
Bob Leader	L-W	L-L	W-L	L-L	L-L	L-L		W-W	W-W	W-W	W-W	W10-L10
Ben Andersen	L-L	L-L	L-L	L-L	L-L	L-L	L-L		W-L	W-W	W-W	W5-L15
Will Huffington	L-L	L-L	L-L	L-L	L-L	W-L	L-L	W-L		W-L	W-W	W5-L15
Jeremy	L-L	L-L	L-L	L-L	L-L	L-L	L-L	L-L	L-W		L-L	W1-L19
Eon	L-L	L-L	L-L	L-L	L-L	L-L	L-L	L-L	L-L	L-L		W0-L20

Big Sky Game 30

Name	Round 1	Round 2	Round 3	Round 4	Round 5	Total
Greg Nowak	W5	W2	W3	D6	W7	4
Eric Albertson	W12	L1	W9	W5	D3	3.5
Dale Gross	W11	W6	L1	W4	D2	3.5
Richard Hall	W9	W8	L6	L3	W12	3
Tyler Gillespie	L1	W12	W11	L2	W6	3
Paul Svelmoe	W13	L3	W4	D1	L5	2.5
Ben Andersen			W12	W9	L1	2
James Sampsell	W	L4	W13			2
Will Huffington	L4	W13	L2	L7		1
Seth McClain				W12		1
Ben Powell	L3	W	L5			1
Max Benot	L2	L5	L7	L10	L4	0
Lemmon	L6	L9	L8			0

Support Chess in Montana

Montana Chess Association Newsletter

Gallatin Valley Open Cross Table

Name	Rating	Team	Round 1	Round 2	Round 3	Round 4	Round 5	Total
Taylor, Tom	1958	MN	1	2	2.5	3.5	3.5	3.5
Carpenter, Romie	1936	MT	1	1	1.5	2.5	3.5	3.5
Matous, Ron	1928	WY	0.5	1.5	2	3	4	4
Carr, John	1830	WY	1	2	2.5	2.5	3.5	3.5
Mundy, Jim	1805	MT	1	2	2.5	2.5	3.5	3.5
Long, Michael	1803	MT	0	0	1	1	1	1
Erickson, Ron	1794	MT	0	0.5	1.5	2	2.5	2.5
Bailey, Brian	1640	MT	0	0	0	1	1	1
Goplen, Arman	1614	ND	0.5	1	1.5	2.5	2.5	2.5
Pyterek, Allen	1548	MT	0	1	2	2	2	2
Beyenal, Haluk	1535	MT	0	1	1.5	2	3	3
Blehm, Zac	1316	MT	1	1	1	F1.0	1	1
Mundy, Jerry	unrated	MT	1	1	1	x2.0	2	2

Gallatin Valley Open Standings

Name	Rating	Round 1	Round 2	Round 3	Round 4	Round 5	Total
Matous, Ron	1928	D8	W11	D3	W5	W2	4
Taylor, Tom	1958	W7	W13	D5	W4	L1	3.5
Carpenter, Romie	1936	W12	L5	D1	W9	W8	3.5
Carr, John	1830	W9	W10	H	L2	W11	3.5
Mundy, Jim	1805	W6	W3	D2	L1	W10	3.5
Beyenal, Haluk	1535	L5	B	D8	D7	W9	3
Erickson, Ron	1794	L2	D8	W10	D6	H	2.5
Goplen, Arman	1614	D1	D7	D6	W11	L3	2.5
Pyterek, Allen	1548	L4	W12	W13	L3	L6	2
Mundy, Jerry	unrated	W11	L4	L7	X	L5	2
Long, Michael	1803	L10	L1	W12	L8	L4	1
Bailey, Brian	1640	L3	L9	L11	B	U	1
Blehm, Zac	1316	B	L2	L9	F	U	1

Matous Captures First in Gallatin Valley Open November 1st – 2nd, 1997

By Brian Bailey

On a brisk November weekend, thirteen players from four states made the trek to Bozeman to play in the first rated tournament here in over a year and a half. Those that came found themselves facing stiff competition in the form of a very strong field, consisting of almost 50% "A" players. Round one provided a couple of surprises as Arman Goplen of Bismarck, ND drew Ron Matous of Kelley, Wyoming and Jerry Mundy of Livingston defeated Michael Long. This tournament was Jerry's return to rated chess after a hiatus of nearly a decade. He says that his old rating was in the 1200's, but his performance in this tournament puts him in the B class range. Round two provided two more upsets as Jerry's brother Jim defeated second seed Romie Carpenter and Goplen earned another draw, this time against Ron Erickson. Entering into round three, only Top seed Tom Taylor of St Paul, MN, John Carr of Jackson, WY and Jim Mundy remained unscathed; After round three, no one remained perfect, as the top three boards all drew, leaving this same trio atop the standings. In round four, both Carr and Jim Mundy lost; Carr to Taylor and Mundy to Matous. Taylor was now alone at the top of the standings, one half point above Matous, who had finally fully recovered from his first round draw. Another half point back stood the quartet of Carpenter, Carr, Jim Mundy, and Goplen. A last round Pairing between Taylor and Matous meant that this

Support Chess in Montana