

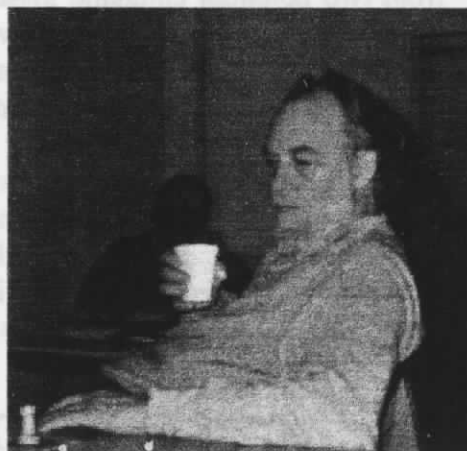
1997

January - February  
Vol. XXI Issue 6

# MONTANA Chess News

The Montana Chess News is published by and for the Montana Chess Association, an affiliate of the United States Chess Federation. The MCA's goal is to promote the game of chess in Montana by education, competition and providing forums for discussion. Subscription and membership in the MCA is available for \$6 per year regular and \$3 per year junior. Subscriptions and/or renewals should be directed to: Sherwood Moore, MCA Treasurer, 453 Minnesota, Missoula, MT 59802

## Chess Faces



# Montana Chess Association Newsletter

## Another Edition of the MCA

Hello and welcome to another edition of the MCA Newsletter! Sit back, relax and go over a few games or browse the upcoming tournament listings. If you get a chance, drop us a line and tell us what you think about our MCA newsletter. You can send your comments to: MCA Newsletter, PO Box 3984, Missoula, Montana. 59806. This newsletter is available via the Internet at our MCA Web site

at:

<http://www.bigsky.net/lonewolf/chess.htm>

From this site you can look over a current or previous edition of the MCA and even engage in a game of real time game of Chess with an opponent somewhere in the World! To access the Chess playing section of the site, your browser must support Frames, Java, and JavaScript. Who knows, maybe we will meet online! Email may be directed to the MCA via: [lonewolf@bigsky.net](mailto:lonewolf@bigsky.net)

Michael Martinez  
PS...*On a final note, I experienced some difficulty with the files associated with this newsletter on my computer. If I failed to mention an event or any other bit of information, then please forgive me. Anyone who had information left out or would like to include an additional information on our Web site, please feel free to contact me via the above means.*

## A Letter to the Membership

Included in the newsletter are the MCA by-laws. If you wish to have

any changes made to the by-laws, they must be published in the March-April newsletter. They will then be added to the MCA business meeting agenda on May 4<sup>th</sup>. Please send any changes or additions to the by-laws to me as soon as possible.

Thank You,

Sherwood Moore

## January " Deep Freeze " Game 30

On January 11, 15 hardy chess marines braved the bad weather to engage in mortal combat. Coming out on top were : 1. Greg Nowak 4 1/2 (\$20) 2. Dan McCourt 4 (\$16) 3. Hans Anderson 3 1/2 (\$10) & 4. Rick Hall 3 1/2 (\$10). Other winners were John Wabisky, who won a MCA membership with the best English. Also Paul Svelmas with the best King's Gambit ( \$5 Shack certificate ), and Pudy Katzl with best Bird. ( \$5 Shack certificate ) Special honors to Nick Hartman, 12 years old, was playing just to improve his game and have fun.

The Octopus slipped away from two potential endgame losses to win, one in which he was two pieces down. Fortunately this time control was too fast for opponents to claim draw because of " insufficient losing chances " ! Two from this tourney, Johnson and Gilbertson, who had previously won MCA memberships, played in their first MCA tourney, the Five

Valley Freeze Out. Johnson beat an expert in his first rated game ! Hall continued to be Katzl's nemesis with another upset. He also drew me in the last game. Hans Anderson continues in his flamboyant style to upset Katzl, then draw to Johnson. Bad weather kept yet another tourney from picking up another 8 ontay tourneys. Expect some new young players from Thompson Falls for my next event Mon. !

## Way Up North

The octopus goes farther up the Flathead River to pristine Thompson Falls and wins 37 to 1.

Thompson Falls Jr. High's new chess club, headed by Keith Ivers, invited the Octopus, Greg Nowak, to demonstrate his chess prowess by playing thirty-eight at once. A young Thompson Falls player, who previously got beaten badly in Plains, got his revenge. With the help of dropping a rook, then overlooking a combo and losing a queen, the Octopus went down. Several of the Thompson Falls bunch had previously sampled my style December sixth in Plains. So this time Thompson Falls returns the favor by inviting a group from Plains. The Thompson Falls event was on January 27, 1997. Many autographs were signed and my foe went on to chess glory among his peers. A chess meet is pending soon between Plains and Thompson Falls. Also between Hellgate Middle school and St. Joseph. Hmmm. Enough for a small league. Why not, they travel for sports!

# Support Chess In Montana!!

# Montana Chess Association Newsletter

Do you have a school in town that's interested? Contact me at Hellgate Station P.O. Box 8572 Missoula, Montana 59807. Help me promote chess! Even farther north I have another school show set for Kalispell and a big 70 player mall extravaganza dubbed "Northwest's Great Chess Challenge". The date and time are close to being announced. I would like to make history!! Perhaps even a chess tourney called Northern Montana Open. I already have a sponsor.

## Shack "Bonus" 15 minute Booth Special

On January 28, 7 to 11pm, nine players convened in a unique "comfort's" tourney. We all played in the comfort of restaurant booths. Each player got a free cup of coffee. Color TV between games. The restaurant was closed to the general public. Seven out of nine got prizes! First through fourth got cash. Nowak and Sorenson got \$10 each. 7 1/2 - 1/2. Third place, Dan McCourt received \$6 and fourth place, Eric Gilbertson received \$5. Fifth through seventh received Hunter Bay Coffee gift certificates from \$1 to \$4. Navna and Anderson got to exciting draw finals with me, trying to jerk something loose with a series of checks. I had Q,P,K, and he had K,R,N and two pawns well connected, all pieces on KR,KN, and KB files. Nothing on rest of board. With two minutes each left, I relented and agreed to draw.

## 16<sup>th</sup> Annual Valentine Open

The 16<sup>th</sup> annual Valentine Open saw a coincidentally 16

participant's compete over five rounds for trophies, class prizes, and bragging' rights.

Current Montana State Co-Champion, Jim Skovron, took first on tie breaks over Mike Jensen, who took second, both with four points. Sherwood Moore took clear third with 3 1/2 points. The father-son team of Gary & Jeremy Younker took home Best U1800 & Best U1600 respectively, while Bill Furdell laid claim to Best U1400. Bill McBroom picked up the Biggest Upset Plaque by picking off Rudy Katzl in the first round. However, Rudy recovered nicely and was found sitting on Board 1 in the final round.

The tournament was characterized by numerous competitive, hard-fought games and a hearty thanks goes out to all participants, especially those who took the time and trouble to travel from outlying areas.

## Five-Valley Freeze-Out

The iciest weather in memory accompanied this year's Five-Valley Freeze-Out. A motley collection of ten diehards turned up for a four round battle in which early scalp-taking assured a contentious finish--no last round Garden City Draws.

Greg Nowak edged Rudy Katzl on tie-breaks as each clawed back from an early loss to finish with three points. Romie Carpenter and Keith Brownlee followed with 2 1/2 points. Romie gets the nod as this year's "Ice King" for his cool play in round two. Keith took Best Under 1600 and earned a 41 point rating gain.

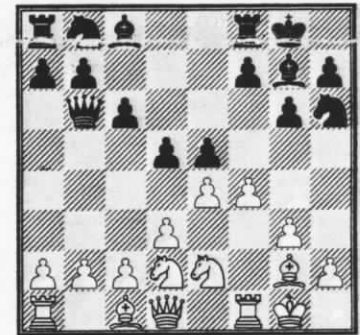
Seismic upsets came in the first two rounds with Justin Johnson upending Rudy Katzl while Romie iced the Octopus. Brownlee held Mike Jensen to a first round draw. The G/90 time-control undoubtedly influenced play as well as resulting in some incomplete score sheets. Thanks and tip of the TD's hat to all who attended.

## Games Section

1.

**Bill McBroom -  
Roamie Carpenter  
UCCC 2nd Winter Open, , 1997**

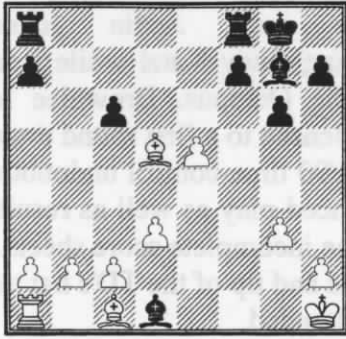
1. e4 c6 2. d3 d5 3. Nd2 g6 4. g3 Bg7 5. Bg2 Nh6 6. Ne2 0-0 7. 0-0 e5 8. f4 Qb6+



9. Kh1 Ng4 10. Nb3 Nf2+ 11. R:f2 Q:f2 12. fe Bg4 13. ed cd 14. Nbd4 Q:d4 15. N:d4 B:d1 16. B:d5 Nc6 17. N:c6 bc

# Support Chess In Montana!!

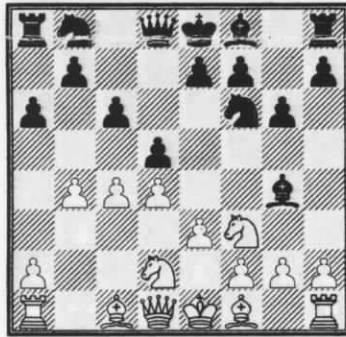
# Montana Chess Association Newsletter



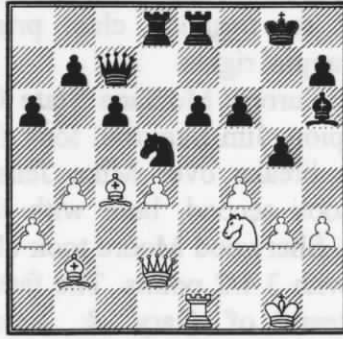
18. B:c6 Rac8 19. Bf4 R:c6 20. R:d1 R:c2 21. d4 Re8 22. d5 B:e5 23. B:e5 R:e5 24. d6 Rce2 25. d7 Re1+ 0:1

2.  
Ron Erickson - John Wabiskey  
UCCC 3rd Fall Open, , 1997

1. Nf3 Nf6 2. b4 g6 3. e3 a6 4. c4 c6 5. d4 d5 6. Nbd2 Bg4



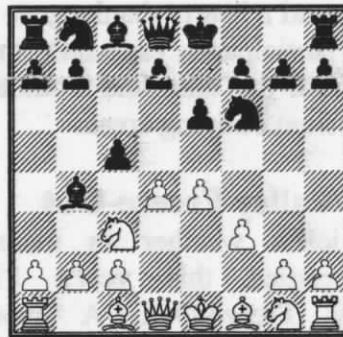
7. h3 B:f3 8. N:f3 e6 9. a3 Nbd7 10. Bb2 Bg7 11. Rc1 0-0 12. cd N:d5 13. Bd3 Re8 14. 0-0 Qc7 15. Qc2 Rac8 16. Ng5 Nf8 17. f4 N:e3 18. Qd2 N:f1 19. B:f1 Rcd8 20. Nf3 Nd7 21. Re1 Nb6 22. Ne5 Nd5 23. g3 f6 24. Nf3 Bh6 25. Bc4 g5



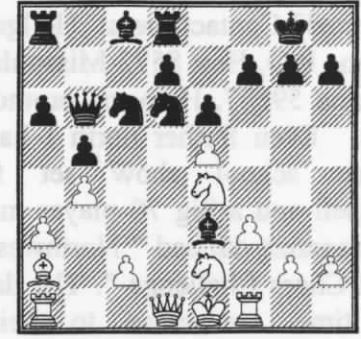
26. Re2 gf 27. B:d5 ed 28. Rg2 Rd7 29. g4 Re3 30. Qd1 Qd8 31. Bc1 Re2 32. h4 1/2:1/2

3.  
Dan McCourt - Ron Erickson  
UCCC 3rd Fall Open, , 1997

1. d4 Nf6 2. Nc3 e6 3. e4 Bb4 4. f3 c5



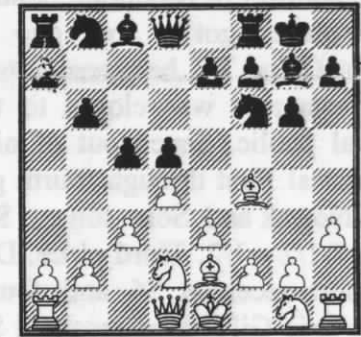
5. a3 cd 6. Q:d4 Nc6 7. Qd1 Be7 8. Bc4 a6 9. Nge2 b5 10. Ba2 Qb6 11. Bf4 Bc5 12. Rf1 0-0 13. b4 Be3 14. Bd6 Rd8 15. e5 Ne8 16. Ne4 N:d6



17. Q:d6 a5 18. c3 ab 19. ab Ra3 20. Nc5 Qa7 21. Qd3 B:c5 22. bc R:a2 0:1

4.  
John Rayburn - Michael Jensen  
UCCC 3rd Fall Open, , 1997

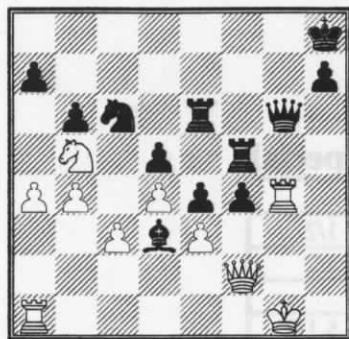
1. d4 d5 2. Bf4 Nf6 3. e3 g6 4. Nd2 Bg7 5. Be2 c5 6. c3 b6 7. h3 0-0



8. Ngf3 Nc6 9. 0-0 Bb7 10. a4 e6 11. Qc2 cd 12. ed Rc8 13. Qb1 Nh5 14. Bh2 Bh6 15. Re1 Nf4 16. Bf1 Qf6 17. g3 Nh5 18. Be2 Rfe8 19. Nf1 e5 20. Ne3 B:e3 21. fe e4 22. Nh4 Qg5 23. B:h5 Q:h5 24. Rf1 Ba6 25. Rf2 Qh6 26. Qa2 Rcd8 27. b4 Bc4 28. Qd2 Re6 29. Ng2 g5 30. h4 f6 31. hg fg 32. g4 Qh3 33. Ne1 Q:g4+ 34. Rg2 Qf5 35. Nc2 Rf8 36. Qf2 Qg6 37. Bf4 Rf5 38. Na3 Bd3 39. Nb5 Kh8 40. Rg4 gf

## Support Chess In Montana!!

# Montana Chess Association Newsletter



41. R:g6 R:g6+ 42. Qg2 R:g2+ 43. K:g2 Rg5+ 44. Kf2 f3 45. Rg1 R:g1 46. K:g1 B:b5 47. ab Ne7 0:1

5.

Jim Skovran - Gary Yonker  
Valentine Open, , 1997

1. e4 d5 2. ed Q:d5 3. d4 Nf6 4. Nc3 Qd8 5. Bc4 g6 6. Nf3 Bg7



7. h3 0-0 8. Bf4 c6 9. 0-0 b5 10. Bb3 a5 11. a4 b4 12. Ne2 Bb7 13. Ng3 Nbd7 14. Re1 Nd5 15. B:d5 cd 16. Qd2 Nf6 17. Ne5 Ne4 18. Qe2 e6 19. f3 Nf6 20. Qb5 Ba6 21. Qc6 Qc8 22. Q:c8 Rf:c8 23. c3 bc 24. bc R:c3 25. Bd2 Rb3 26. B:a5 Rab8 27. Rec1 Ne8

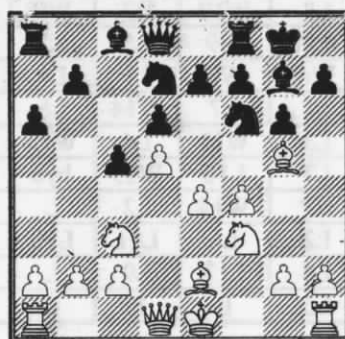


28. Rc6 Bb7 29. Rb6 R:b6 30. B:b6 f6 31. Nd7 Ra8 32. a5 Ba6 33. Nc5 Kf7 34. N:a6 R:a6 35. Rc1 Bh6 36. Re1 Bd2 1/2:1/2

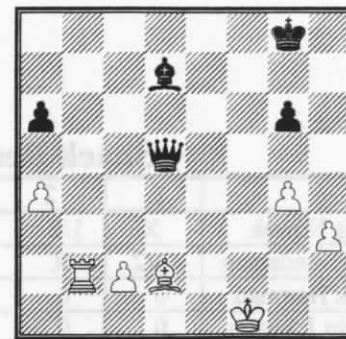
6.

Rudi Katzl - Bill McBroom  
Valentine Open, , 1997

1. d4 Nf6 2. Nc3 g6 3. e4 d6 4. Bg5 Bg7 5. f4 0-0 6. Nf3 Nbd7 7. Be2 c5 8. d5 a6



9. a4 Ng4 10. Qd2 f5 11. ef R:f5 12. h3 Nh6 13. g4 Rf8 14. f5 B:c3 15. Q:c3 Nf7 16. fg hg 17. Bh4 Nde5 18. 0-0 N:f3+ 19. B:f3 Ne5 20. Bg2 Bd7 21. b3 b5 22. Qe3 ba 23. ba Qa5 24. B:e7 R:f1+ 25. B:f1 Re8 26. B:d6 Nc4 27. Q:c5 Qc3 28. Ra2 Re1 29. Bf4 R:f1+ 30. K:f1 Nd2+ 31. B:d2 Q:c5 32. Rb2 Q:d5



33. Rb8+ Kf7 34. Be3 Qd1+ 35. Kf2 Q:c2+ 36. Kg3 Qc7+ 37. Bf4 Qc3+ 38. Kh4 Qe1+ 39. Kg5 Qa5+ 40. Kh6 Q:a4 41. Bd6 Ke6 42. Rb6 Bc6 43. Rb4 Qa1 44. Bf4 Qh8+ 45. Kg5 Qf6+ 46. Kh6 Qf8+ 47. Kh7 Q:b4 0:1

## Support Chess In Montana!!

# Montana Chess Association Newsletter

## Shack Restaurant 15 min "Booth" Championship Special

		1	2	3	4	5	6	7	8	9	
1	Greg Nowak	X	1/2	1	1	1	1	1	1	1	7 1/2 - 1/2
2	Hans Anderson	1/2	X	1	1	1	1	1	1	1	7 1/2 - 1/2
3	Nick Hartman	0	0	X	0	0	0	0	0	0	0 - 8
4	Justin Johnson	0	0	1	X	0	0	1	0	1/2	2 1/2 - 5 1/2
5	Bob Leader	0	0	1	1	X	0	1	0	0	3 - 5
6	Dan McCourt	0	0	1	1	1	X	1	1	1	6 - 2
7	Mark Kuhlman	0	0	1	0	0	0	X	0	0	1 - 7
8	Rick Hall	0	0	1	1	1	0	1	X	0	4 - 4
9	Eric Gilbertson	0	0	1	1/2	1	0	1	1	X	4 1/2 - 3 1/2

## January "Deep Freeze" Game 30

No.	Place	Name	Rating	1	2	3	4	5	Total points
1	1	Greg Nowak	2194	W9	W3	W8	W5	D4	4 1/2
5	2	Dan McCourt		W13	L8	W12	W7	W5	4
4	3	Hans Anderson	1740	W10	L1	D6	W14	W8	3 1/2
6	4	Rick Hall	Est. 1700	W14	L5	W10	W8	D1	3 1/2
3	5	Paul Svelmoe	2000	W15	W4	W7	L1	L2	3
9	6	Justin Johnson		L8	W10	D3	W9	D7	3
7	7	Eric Gilbertson		W11	W9	L5	L2	D6	2 1/2
2	8	Rudy Katzl	2000	W6	W2	L1	L4	L3	2
8	9	John Wabisky		L1	L7	W14	L6	W10	2
11	10	Mark Kuhlman		L3	W11	L4	W13	L9	2
14	11	Erik Hurd		L7	L10	W13	bye	L	2
15	12	Paul Mitchell		NP	W14	L2	L	L	1
12	13	Nickolas Hartman	12 years old	L2	L6	L11	L10	bye	1
13	14	Ben Powell		L4	L12	L9	L	L	0
10	15	Dale Gross		L5	L	L	L	L	0

## 16<sup>th</sup> Annual Valentine Open

No	Name	I.D. No.	Rating	Round 1	Round 2	Round 3	Round 4	Round 5	Total
1	Jensen, J. Michael	12024550	2024	W9	W5	1/2	D3	W2	4
2	Katzl, Rudolf G.	12102820	2014	L10	W12	W9	W6	L1	3
3	Skouron, James J.	12347620	1886	W11	D6	W4	D1	W5	4
4	Shughart, David W.	12401971	1813	W12	W10	L3	D5	D6	3
5	Erickson, Ron	12294030	1778	W13	L1	W14	D4	L3	2 1/2
6	Yunker, Gary	12509011	1702	W14	D3	W7	L2	D4	3
7	McCourt, Daniel J.	12400272	1700	BYE	W16	L6	L9	W11	2 1/2
8	Moore, Sherwood	12394525	1675	D16	W15	1/2.	D10	W12	3 1/2
9	Brownlee, Keith	12618866	1600	L1	W13	L2	W7	BYE	2 1/2
10	McBroom, William	12179140	1600	W2	L4	W15	D8	BYE	3
11	Rajala, Robert J.	12549756	1443	L3	L14	1/2.	W16	L7	1 1/2
12	Yunker, Jeremy	12519554	1420	L4	L2	W16	W15	L8	2

**Support Chess In Montana!!**

# Montana Chess Association Newsletter

13	Furdell, William J.	12616131	1337	L5	L9	1 Pt.	D14	W15	2 1/2
14	Doulas, Nick J.	12604788	1209	L6	W11	L5	D13	W16	2 1/2
15	Shughart, Max	12601990	1172	1 Pt.	L8	L10	L12	L13	1
16	Johnson, Justin	New	UNR	D8	L7	L12	L11	L14	1/2

## First Winter Open

No.	Name	Rating	Round 1	Round 2	Round 3	Round 4	Total
1	Nowak	2184	W6	L3	W4	W5	3
2	Katzl	2005	L9	W7	W6	W3	3
3	Carpenter	1981	W10	W1	D5	L2	2.5
4	Brownlee	1663	D5	W8	L1	W7	2.5
5	Jensen	2007	D4	W9	D3	L1	2
6	Yunker	1706	L1	W10	L2	W8	2
7	Gilbertsen	1525	H	L2	W10	L4	1.5
8	McCourt D.	1650	H	L4	W9	L6	1.5
9	Johnson	1563	W2	L5	L8	L10	1
10	Furdell	1348	L3	L6	L7	W9	1

## 2<sup>nd</sup> Winter Open

Number	Name	Rating	Round 1	Round 2	Round 3	Total
1	Carpenter	1893	1	2	3	3
2	Shughart, david	1813	1	2	2	2
3	McCourt	1732	1	1	1.5	1.5
4	Leader	1650 est.	1	1	2	2
5	McBroom	1605	0	0	0	0
6	Wabisky	1370	0	1	1.5	1.5
7	Cain	1294	0	1	1	1
8	Shughart, Max	1172	0	0	0	0
9	Gisselbeck	1343	HM	HM	1	1

## 3<sup>rd</sup> Fall Open

No.	Name	I.D No.	Rating	Round 1	Round 2	Round 3	Total
1	Nowak, Gregory W.	10310423	2175	W5	W3	X2	3
2	Jensen, Michael J.	12024550	2021	W6	W8	F1	2
3	Carpenter, Romie G.	12280430	1865	W7	L1	W8	2
4	McCourt, Daniel J.	12400272	1700	L8	W6	F7	1
5	Wabisky, John V.	12686050	1326	L1	L7	X7	1
6	Cain, Ryan	12514802	1273	L2	L4	F5	0
7	Gross, Dale	12685444	1233	L3	W5	X4	2
8	Leader, Bob W.	New	Unrated	W4	L2	L3	1

**Support Chess In Montana!!**

# Montana Chess Association Newsletter

## Tournament Announcements

March 15<sup>th</sup> **Bookworm '97** RR format G/15. University of Montana, Room 362 Social Science Bldg., Missoula, MT. EF: by 3/14 \$8 juniors \$4 Double entry at the door. Medal & Prizes based on entries. Reg. 11 - 11:30 Round times based on entries. USCF & MCA membership required (Special Unrated section for non-members EF: \$2) Enter: Dan Mc Court 608 W Central, Missoula, Montana 59801, (406) 721- 0254.

April 19 & 20 **Crocus Open**

See Michael Jensen for further information.

# SEE Addenda Section

April 26<sup>th</sup> **Spring Flood Game 30 Tourney** 5RR, G/30. The Shack Restaurant, 222 W Main, Missoula, Montana 59802. EF: \$10 in advance \$14 at site (Entries limited to first 24 paid) Prizes (based on 20 entries) 1<sup>st</sup> = \$30, 2<sup>nd</sup> = \$25, 3<sup>rd</sup> = \$20, 4<sup>th</sup> = \$10 Shack Gift Certificates for: Best Bird, Polish, Larsen & Andersen. MCA membership for Best English and Caro Kann and Best under 17. \$5 Shack Gift Certificate for best King's Gambit. Pre registers must be on site by 11:15 am. Rounds: 11:30am, 1pm, 2:30pm, 4pm and 5:30pm. Register via mail to: Greg Nowak, Hellgate Station, PO Box 8572, Missoula, Montana 59807.

May 3-4 **62<sup>nd</sup> Montana State Open**. 5SS, 30/90, SD/1. YWCA Rec Center, 402 N. 32<sup>nd</sup> St., Billings, MT 59101. EF: \$20 by 5/1, \$25 at site, Jrs. half-price. Trophies 1<sup>st</sup>, 2<sup>nd</sup>, 3<sup>rd</sup>, A, B, C, D, Senior. Reg. 8 - 8:30. Rds 9 - 2:30 - 7, 9 - 2. State membership required. \$6 OSA. MCA business meeting Sunday at 8am. Ent: Zygmund Mayer, 4413 Rimrock Road, Billings, MT 59106, (406) 655-0907. NS, NC, W.

June 14<sup>th</sup> **Montana State Action Tournament** 5SS, G/30. University of Montana, Room 362 Social Science Bldg., Missoula, MT. EF: \$7.50 by 6/12, \$10 at site, Jrs. Half-price. \$\$47.50: 15-10, U1800, U1600, U1400 \$7.50 each. Reg. 8-8:45. Rds. 9 -10:30 - 1 - 3:30 - 4. State membership required \$6, OSA. Ent: Sherwood Moore, 453 Minnesota, Missoula, Montana 59802 (406) 728-1695 NS, NC, W.

June 14<sup>th</sup> **Montana State Speed Chess Championship** Round Robin University of Montana, Room 362 Social Science Bldg., Missoula, MT. EF: \$1 Prizes: 1<sup>st</sup> = 40% of entry fees, 2<sup>nd</sup> = 30% of entry fees, 3<sup>rd</sup> = 20% of entry fees. Director: Sherwood Moore, 453 Minnesota, Missoula, Montana 59802 (406) 728-1695.

June 15 **Montana State Quick Chess Championship**. G/15. University of Montana, Room 362 Social Science Bldg., Missoula, MT. EF: \$7.50 by 6/12, \$10 at site, Jrs half-price. \$\$47.50: 15 -10, U1800, U1600, U1400 \$7.50 each. Reg 8 - 8:45. Rds 9. State membership required \$6, OSA. Ent: Sherwood Moore, 453 Minnesota, Missoula, Montana 59802, (406) 728-1695. NS, NC, W.

## MCA BYLAWS

1. The President shall act as the official delegate for Montana to the U.S. Chess Federation. He will also appoint the two alternate voting members.
2. MCA shall adopt a schedule of membership fees with categories and rates as follows:  
Juniors(under 18) \$3/yr.

# Support Chess In Montana!!



# Montana Chess Association Newsletter

Regular \$6/yr.

3. All players in MCA sponsored or sanctioned events (except where specially designated) shall be required to join MCA.
4. First-time players, new to USCF will receive one (1) year free MCA membership to help with costs.
5. The MCA shall make appropriate awards for the following:
  - a) Montana State Chess Champion(s)  
to the winner(s) of the State Championship
  - b) Montana State Grand Prix Chess Champion  
to the winner of the Grand Prix competition
  - c) Montana State Postal Chess Champion(s)  
to the winner of the Montana Postal Chess Tournament
  - d) Montana State Speed Chess Champion  
to the winner of the State Speed Chess Championship
  - e) Montana Senior Chess Champion  
to the Montana player age 50 or over with the best showing in the Montana Open
  - f) Biggest Upset of the Year  
to the Montana resident (at the time of the game) who wins a game against a higher-rated opponent where the difference in ratings is the greatest for any game played in an open tournament during the calendar year. The rating of both players must be established at the time of the game.
  - g) Greatest Rating Gain for the Year  
to the player with the most gain in rating points according to the annual list published by the USCF. The player must have an established rating at the beginning of the year, and must be a Montana resident for at least six months, including either the beginning or the end of the year.
  - h) Montana High School Chess Champion  
to the winner of the State High School Championship.
  - i) Grand Slam Award  
to any player who takes a clear 1st place in four Grand Prix tournaments during the course of the MCA tournament calendar year (after a Montana Open to the next Montana Open). The trophy of plaque will have the name of the player and the four

## Support Chess In Montana!!

# Montana Chess Association Newsletter

tournaments in which he/she took 1st place.

6. In the State Closed playoff, all players tied for 1st place will be listed as co-champions of that year.
7. The Montana Postal Championship shall be an official MCA annual event. The MCA Postal Championship shall be rated by USCF. Only members who are legal residents of Montana may enter.
8. Any tournament "sponsored" by the MCA is:
  - a) Organized and directed by officers of the MCA or persons appointed by MCA.
  - b) Financially supported by the MCA.
  - c) Advertised in the official newsletter of the MCA.
9. Any tournament "sanctioned" by MCA must:
  - a) be advertised in the official newsletter of the MCA.
  - b) require MCA membership.
10. In any tournament "sponsored" or "sanctioned" by the MCA, the following conditions will apply:
  - a) The entry fee for all players will be the same except in the case of Junior players, who will receive a 50% discount. In all MCA "sponsored" events, the current State Champion(s) will be entitled to free entry.
  - b) A uniform tie-break system for prizes will be used.  
The order will be: 1)Solokoff 2)Cumulative 3)Head-to Head
  - c) Prizes advertised must be available to the prizewinners at the end of the event. The exception will be the State Closed, in which the name of the State Champion would need to be engraved on the trophy. The trophy would then be delivered within 60 days to the new State Champion.
  - d) Any change in the starting time for a round, as determined by the director, will be limited to no more than plus or minus one (1) hour from the advertised starting time, except in the case where the Director may delay the last round to await the conclusion of games crucial to pairings. Any changes shall be announced before the start of the previous round.
  - e) The time control for any MCA Grand Prix game shall not be faster than G/90.
11. The Montana State Open tournament will be "sponsored" by the Montana Chess Association and will be an "Open" tournament. Players from any state are welcome.

## Support Chess In Montana!!

# Montana Chess Association Newsletter

12. The entry fee for the Montana Open shall be: \$20.00 per player in advance, \$25.00 at the playing site. Junior players (under 20) shall pay 1/2 price.
13. The date for the Montana State Open will be determined by the membership by a majority vote. The board of directors will put forth three dates for the membership to vote on. The dates will be in May or June, excluding MOTHERS DAY, MEMORIAL DAY, and GRADUATION DAY.
14. There will be a "Closed" playoff following the State Open to determine the State Champion. The ten players to compete in the "Closed" will be the previous year's State Champion, the top four (4) finishers in the Grand Prix, and the top five(5) Montana finishers in the State Open. Non-residents are not eligible for the State Closed playoff.
15. After the Montana Open, the Grand Prix finishers will first be determined for seeding into the State Closed playoff. Then, excluding the top four Grand Prix finishers and the previous State Champion, the top five finishers (Montana residents) in the Montana Open will be determined and seeded into the State Closed playoff.
16. The procedure for determining alternate players for the "Closed" is as follows: Grand Prix seed will be replaced by those next in line in the Grand Prix standing: State Open seeds will be replaced by players next in line in the State Open standings: A sole State Champion will be replaced by the #6 finisher in the Montana Open: A Co-State Champion will be replaced by the other co-champion with the best tie-breaks in the previous State Closed playoff.
17. When there is a tie in the "Closed" playoff, the following method of tie-break will be used to determine who is seeded into the next years "Closed" playoff:
  - a) If the current champion is one of the tied players and he is the sole champion from the previous year, or the only one of the previous years Co-Champions, then he shall be the seeded player.
  - b) In a tie not involving the current champion, the player with the best standing in the previously held State Open, including tie-breaks, shall be the seeded player.
  - c) In a tie not involving the current champion or a player who competed in the previous State Open, the player with the best

**Support Chess In Montana!!**

# Montana Chess Association Newsletter

Grand Prix standing shall be the seeded player.

18. The State Closed shall be an MCA "sponsored" event. The site, date and tournament director for a given years Closed State Championship shall be established by the MCA Board of Directors, and these arrangements shall be announced at the same time that the years State Open is first listed in Montana Chess News. The Championship shall have an Open satellite. The playoff must take place by no later than October 31st of that year.

19. The Grand Prix shall begin after the Montana Open each year, and conclude with the following years Montana Open. Only a Swiss-system, open tournament will be eligible to be a Grand Prix event. In any Grand Prix tournament, all Grand Prix points will be issued to the first ten Montana finishers with a plus score, respective of finish. No tie-breaks will be in effect for Grand Prix points, i.e. Two players tie for 1st. They would split 1st and 2nd Grand Prix points equally. Grand Prix points will not be issued to non-resident members. The Secretary/Treasurer shall compute the Grand Prix points awarded and track the standings through the year, arranging for those standings to be published in the official newsletter throughout the year.

20. Grand Prix points will be awarded according to the following formula:

$$(N/5) \times (11-P) \times C$$

where

- N = Number of rounds in the event  
P = Place in order of finish among Montana resident players (the average place in the event of ties)  
C = Average rating of all players in the event / 1500

For the purpose of determining the average rating of all players in an event, the ratings used by the director for pairings will be used, except that players without ratings will be assigned a number equal to:

Average rating of RATED players + (W-L) x 100 where W = wins and L = losses (of the unrated player).

21. MCA Grand Prix events will be limited to one (1) per sponsoring USCF affiliate organization per year. All MCA Grand Prix events must be announced as such in advance in MONTANA CHESS NEWS. A

## Support Chess In Montana!!

# Montana Chess Association Newsletter

minimum of six players will be required to participate in a Grand Prix event to qualify the awarding of official Montana Grand Prix points to participants.

22. The annual MCA Business Meeting will be held in conjunction with the Montana State Open. The agenda for the business meeting will be decided by the members throughout the year and announced in advance of the State Open in the MCA newsletter.

**Support Chess In Montana!!**

# Montana Chess Association Newsletter

## Addenda

April 19<sup>th</sup> and 20<sup>th</sup> **Crocus Open** 4SS, 30/90 SD/60. University of Montana, Room 362 Social Science Bldg., Missoula, Montana. EF: \$15 if by 4/17 \$20 at site. Prizes: Depend on \$200 in Entries 1<sup>st</sup> = \$100, 2<sup>nd</sup> \$50, U1900 = \$20, U1700 = \$10, Upset = \$20 (both players must have non provisional rating) Registration 9 - 9:30am Rounds at 10am, 4pm & 9am and ASAP. MCA membership required \$6 OSA For advance registration, Contact: Michael Jensen, 3714 Creekwood Road, Missoula, Montana 59802 (406) 721-0131.

## GAME HIGHLIGHTS FROM the '97 FREEZE-OUT



Rd1 Bd4 Johnson-Katzl  
Reversed Sicilian Dragon  
White drops a pawn in the early going but his pieces find good posts while black's development becomes entangled. The end comes on a fine tactical shot.

1c4 Nf6 2g3 e5 3Bg2 d5  
4cd Nd5 5d3 Be7 6Nf3 Nc6  
70-0 0-0 8Bd2 Re8 9Nc3

\*\*ratings are post-tournament

Nb6 10Rc1 Bf8 11h3 h6 12a3 a5 13e3? Qc3 14a4 Be6 15Nb5 Qd7 16Bc3 Bd6  
17Kh2 Bc4 18Re1 Qe6 19Nd6 cd6 20Nd2 Bd5 21Bf1 Qf6 22f4 Qd8 23e4 Be6  
24Nf3 ef 25gf f6 26Bb5 Bf7 27Nd4 Qd7 28Bd2 Rec8 29b3 Be8 30Rg1 Kh7 31f5 Bf7  
32Qg4 Rg8 33Qf4 Qe7 34Nc6 bc6 35Bc6 Rb8 36Rg3 d5 37R1g1 Qe5 38Qh4 de  
39Be4 Bb3 40Kh1 Bc4 41Rg7+!! Rg7 42Qh6+ Kg8 43Qg7+++

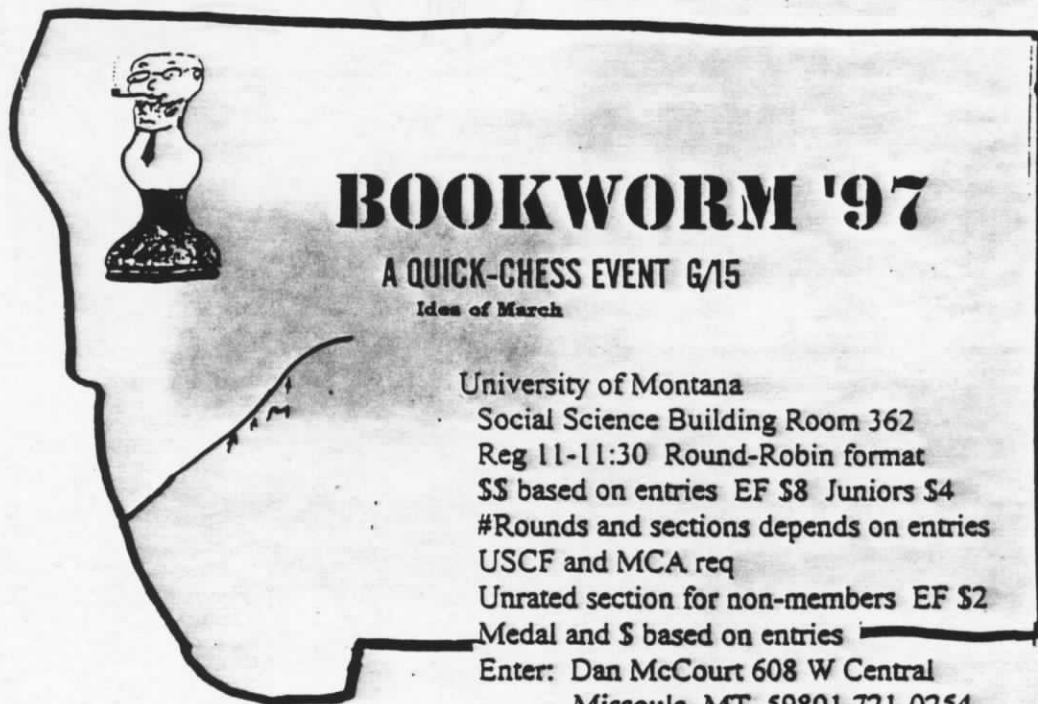
Rd2 Bd1 Carpenter-Nowak The biggest upset in game between rated players. Romie plies his Catalan while Greg works from an Old Indian setup. Out of the opening and into the middle-game, white has efficient development and a comfortable share of space. Black manuevers aggressively on the queenside but Romie, the Ice-Man, stays cool and the seemingly sleepy Catalan Bishop provides tactical underpinning for a chilling 'e' pawn advance. 1d4 Nf6 2Nf3 c6 3c4 d6 4g3 Nbd7 5Nc3 e5 6e4 Re7 7Bg2 0-0 80-0 Re8 9h3 a6 10Be3 b5 11cb5 ab5 12Qc2 Ba6 13Rfd1 Qb8 14a3 Rc8 15Rac1 Nf8 16de5 de5 17Nh4 Ne6 18Nf5 Bf8 19Ne2 c5 20f4 Nd4 21Bd4 cd4 22Qd2 Rc1 23Rc1 Bb7 24fe5 Qe5 25Qd4 Qd4 26Nfd4 b4 27ab4 Bb4 28e5!! Bg2 29Kg2 Nd7 30Nc6 Bf8 31Ned4 Re8 32Re1 Nb8 33b4 Rc8 34b5 Nc6 35Nc6 g6 36Rb1 Bc5 37Rc1 Ra8 38Rc5 Ra2 39Kf3 Rb2 and white won a time-pressure blitz finish.

## Support Chess In Montana!!

Rd3 Bd1 Jensen-Carpenter Torre system Black's strategy clears the Bishops off early and both sides maneuver a Knight into a powerful outpost. While black seems to have better play, white successfully bars the gate and it's a draw by repetition. 1d4 Nf6 2Nf3 e6 3Bg5 c5 4c3 b6 5e3 Be7 6Bd3 Ba6 70-0 0-0 8Re1 Bd3 9Qd3 Nc6 10a3 h6 11Bh4 Nh5 12Be7 Qe7 13e4 Nf4 14Qe3 Qf6 15Nbd2 cd4 16cd4 Rac8 17e5 Qf5 18Ne4 Qg4 19g3 Nd5 20Qe2 f5 21Nd6 Rcd8 22Rad1 f4 23Nh4 f3 24Qe4 Nf4 25Nf3 Nh3 26Kg2 Nf4 27Kh1 Nh3 28Kg2 Nf4 draw agreed

Rd4 Bd2 Nowak-Jensen Benko/English Like the Carpenter-Nowak game in Rd2, White builds a good position and obtains tactical play around the h1-a8 diagonal. 1P-KN3 NKB3 2P-QB4 P-KN3 3B-N2 B-N2 4N-QB3 0-0 5N-B3 P-Q3 6P-Q3 P-K4 7R-N1 N-B3 8B-N5 P-KR3 9BxN QxB 10P-QN4 Q-Q1 11P-N5 N-K2 12Q-N3 B-Q2 130-0 P-B3 14N-Q2 Q-B2 15PxP BxP 16N-Q5! BxN 17PxP P-QN3 18KR-QB1 Q-Q2 19R-B6!! NxR 20PxN Q-B2 21N-K4! QR-B1 22N-B3 K-R1 23R-B1 P-B4 24N-Q5 Q-KB2 25Q-N5 P-KN4 26 P-B7 P-N5 27R-B4 P-K5 28Q-B6 PxP 29PxP Q-K3 30N-B4 Q-B3 31Q-Q7 K-R2 32B-N7 QR-K1 33P-B8=Q Q-R8+ 34R-B1 R-K8+ 35RxR QxR+ 36K-N2 RxQ 37QxP+ K-N1 38QxR+ K-R2 39B-K4+ QxB 40PxQ resigns

Rd4 Bd1 Katzl-Carpenter Caro-Kann (Two-Knights variation) White provokes 14...h6 and, ultimately, it is this weakness that induces Black to initiate a wild exchange. When the smoke clears, White's Queen outmaneuvers Black's Rooks. Perhaps omitting 31...d4 in favor of an immediate ...Kg6 would lightened the defensive burden. 1e4 c6 2Nc3 d5 3Nf3 Bg5 4h3 Bf3 5Qf3 de 6Ne4 Nd7 7Bc4 e6 8d4 Ngf6 9Ng3 Be7 10c3 0-0 110-0 Nb6 12Bb3 a5 13a4 Nbd5 14Bg5! h6 15Bd2! Qb6 16c4 Nb4 17c5 Qd8 18Bc3 Qc7 19Rfe1 Nbd5 20Bd2 b6 21Rac1 Rab8 22Ne4 Ne4 23Re4 bc5 24dc5 Qb7 25Bd5 ed5 26Rg4 Bg4 27Bc3!! f5 28Rg3 Bc1 29Rg7+ Qg7 30Bg7 Kg7 31Qc3+ d4? 32Qc1 Rb4 33Qc2 Kf6 34Qd2 Kg6 35Qf4 Rf6 36Qg3 Kf7 37Qc7 Kg6 38Qg3 Kf7 39b3 Re6 and White went on to win.



**BOOKWORM '97**  
A QUICK-CHESS EVENT 6/15  
*Idea of March*

University of Montana  
Social Science Building Room 362  
Reg 11-11:30 Round-Robin format  
\$\$ based on entries EF \$8 Juniors \$4  
#Rounds and sections depends on entries  
USCF and MCA req  
Unrated section for non-members EF \$2  
Medal and \$ based on entries

Enter: Dan McCourt 608 W Central  
Missoula, MT 59801 721-0254  
By March 14 Double fee at door

# MARCH

Mars März Marzo

15

☞ 3A ☞  
Sun Rises 6:12  
Sets 6:06

MARCH

S	M	T	W	T	F	S
						1
2	3	4	5	6	7	8
9	10	11	12	13	14	15
16	17	18	19	20	21	22
23	24	25	26	27	28	29
<b>SATURDAY</b>						