

11/96

The Montana Chess Association Newsletter

Hello everyone!

We find ourselves at the end of another year of Chess. As we are approaching the New Year, it is common to stop and reflect on what you have done and where you want to go. Decisions are made, resolutions defined and the work begins. The question that naturally flows from this introduction is: What are you going to do to help promote Chess in Montana? Just as a body of water with no inlet or outlet turns stagnant, any organization which does not concern itself with growing, bringing in new members and instituting new ideas turns stagnant as well. This New Year is the time to assist in introducing Chess to your community in a new and exciting way. The key is creativity and ingenuity. Our newsletter is a great way to help communicate ideas for doing just that very thing. What ideas do you have? What can we do to make Chess more attractive to the general public? How can we encourage individuals to develop as players and participate in organized Chess? If you have any input or ideas, then please we ask you to submit them to us for inclusion in a future newsletter. Getting members involved is paramount to our future success.

Please submit your ideas to: Michael Martinez, PO Box 3984, Missoula, MT 59806 or via email at: martinez@bigsky.net (Notice the email address change)

Missing Color!!!

I had spoken with some individuals in the organization about there being a full color front on this issue of the MCA. Although it was designed and set up, the business sponsorship did not get the funds to us in time for the printing. We are planning to run a full color front page in our next issue. I guess you could say that we will start the year off right, instead of ending it with a bang.

The Montana Chess Association WWW

Site has moved!

The new address is: <http://www.bigsky.net/lonewolf/chess.htm> Email should be directed to: martinez@bigsky.net or lonewolf@bigsky.net If anyone would be interested in assisting in the development of our WWW Site, then please contact us via email.

Gobbler Game 30 Open

by Greg Nowak

On November 23rd, 17 players converged in the Shack Restaurant for a challenging day of Chess. Only the Bobcat game and threatening weather prevented it from being a raging success. The tournament featured some interesting upsets: Richard Hall's swashbuckling draw with Hans Anderson via a Danish Gambit & Hall's win over Katzl's Sicilian Defense,

Hans Anderson's win over Svelmoe and Rayburn's sac to earn an upset in the final round against Anderson.

Nowak, Katzl and Rayburn tied for 1st and took \$23 each. Richard Hall took 4th and \$8. Opening prizes of a \$5 Shack Gift Certificate went to Katzl for the best Bird, Nowak for the best Anderson, and MCA membership was awarded to Justin Johnson for the best English. The Mowbrays of Polson courageously came down to find Chess a lot tougher in Missoula. Nick Lopez, a new player, was awarded an MCA membership for his effort and upset over Dale Gross. Five individuals also won \$5 passes to the Crystal Theater as an unadvertised bonus. The tournament was directed by Greg Nowak. Special thanks to the Crystal Theater for their continued support.

The Octopus vs the Community

by Greg Nowak

On November 19th, at Hunter Bay Coffee Roasters at 7pm, the Octopus took on the Community. With donations going to the Humane Society. The time controls were set with the Community getting 2 hours and the Octopus receiving one. The group, headed by Sherwood Moore, collected their chess acumen to give a scare to the Octopus as the game got down to about 3 minutes each. There was some time discrepancy due to

The Montana Chess Association Newsletter

move transmission before the group graciously resigned. Moves from this game are included in the Games section of this Newsletter.

Giant Sea Monster Embraces Plains

by Greg Nowak

Chess moves father north. On December 6th Friday 1-4 pm Greg Nowak gave the Plains players a sample of his style. 80% of the first moves were P-KN3 attending were students from Plains, Hot Springs and Thompson Falls as well as general public and teaches including a local reporter who was quite enthused. One of the best defenses came from a female 5th grader who put up quite a stand. There could be potential prodigy here! Final Score Octopus - 36 opponents - 0. Thompson Falls wants the Octopus for a February exhibition. Special thanks to Diane Leader of Plains school for setting up this event and Bob Leader for transportation. Matches between Plains and Thompson Falls seem to be on the agenda. MCA newsletter and some USCF magazines were passed out.

1996 Turkey Open

The Turkey Open was won by Greg Nowak, who won the \$100 prize with 4.5 pints.

Second and third were split between Mike Jensen and Rudolf

Katzl. Each received \$25 of the prize money.

There was some rumbling from the experienced players when the 'Younger Gang' showed up. This group is lead by Jeremy Younker, with Chris McCourt and Michael Joyce. This young group has the habit of riding roughshod over higher rated players and stealing their opponents rating points! Rumors were spreading that anyone under 15 should be banned from the playing hall. This was being done by Gary Younker and Dan McCourt, the fathers of Chris and Jeremy!

Gary Younker won the 'Best under 1800' prize of \$20 & Jeremy Younker won the 'Best under 1600'. He jumped a whole score group to grab the \$20 prize! Chris McCourt and Michael Joyce split the 'Best under 1400', to take home \$10 each.

Important Announcement !!!

It is now time to vote on the date for the Montana State Open!!

The following dates are available for choosing: The weekend of May 4th, the weekend of May 31st, the weekend of June 1st and the Weekend of June 7th. Do not delay, get your vote in right away by phone or mail to the MCA. For more information, contact Sherwood Moore at (406) 728-1695.

Grand Prix Standings

1. Thad Suits 9.595
2. James Skovron 9.595
3. Ron Erickson 8.080
4. Douglass Hansen 6.565
5. Allen Pyterek 6.565

Biggest Upset for 1996 is.....

Chris Mc Court over William Mc Broom at the Crocus Open. With 547 points!!!

Final Word from the Editor:

I want to thank everyone for being so patient with me in putting out this newsletter. I know at times I can get in a hurry in my typing and botch a game score or the spelling of a name. Often times, I have to have my wife proofread for me before I go to print. I wish to assure you that any such mistakes are not intentional and my goal is to better budget my time so that I can eliminate as many of those mistakes as possible. I am still looking for those of you who would like to contribute to this publication in the way of writing articles. Any help would only improve the quality of the newsletter. Thank You for giving me the opportunity to contribute to Chess in Montana.

Michael Martinez

Support Chess in Montana

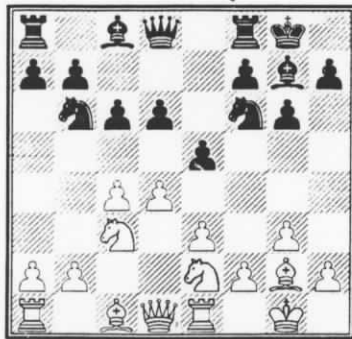
The Montana Chess Association Newsletter

Games Section

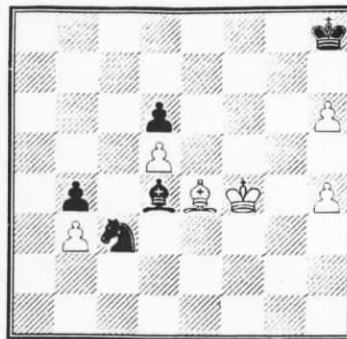
1.

Brian Baily - Jim Skovran
Chinook, , 1996

1. c4 ♘f6 2. ♘c3 g6 3. g3 ♙g7
4. ♙g2 c6 5. e3 d6 6. d4 0-0 7.
♞ge2 ♞bd7 8. 0-0 e5 9. ♖e1
♜b6



10. b3 ♖c7 11. ♙b2 ♙f5 12. d5
♜ad8 13. e4 ♙c8 14. ♙c1 a6
15. ♙g5 h6 16. ♙d2 cd 17. cd
♞e7 18. ♖c1 ♞h5 19. ♙e3
♞a8 20. ♞d2 ♙h7 21. ♞a4 b5
22. ♞b6 ♙b7 23. ♞a5 ♞:b6
24. ♞:b6 ♖c8 25. ♙h3 f5 26. ef
gf 27. ♖:c8 ♙:c8 28. ♖c1 f4 29.
♖:c8 fe 30. ♖:f8 ♞:f8 31. ♞:e3
♞f7 32. ♞e4+ ♙h8 33. ♞f5
♞f6 34. ♞c8+ ♙f8 35. ♙e6
♞g7 36. ♞:a6 b4 37. ♞c4 ♞b7
38. ♞c6 ♞a7 39. ♞c2 ♙g7 40.
♙g2 ♞a5 41. ♞d2 ♞c5 42. f3
♙e7 43. h3 ♙d8 44. g4 ♙b6 45.
♞e1 ♞e3 46. h4 ♙d4 47. g5
♞h5 48. gh+ ♙h8 49. ♞f1
♞d2 50. ♙h3 ♞:e2 51. ♞:e2
♞f4+ 52. ♙g4 ♞:e2 53. ♙f5
♞c3 54. ♙e4 ♞:a2 55. f4 ef 56.
♞:f4 ♞c3



57. ♙d3 ♙e5+ 58. ♙g5 ♞:d5
59. h5 ♞e3 60. ♙g6 ♞g2 61.
♙c4 ♞f4+ 62. ♙f7 ♙h7 63.
♞e7 ♙:h6 64. ♙d7 ♞:h5 65.
♞c6 ♞f6 66. ♙b5 ♙c3 67.
♞c6 d5 68. ♙b5 dc 69. bc ♞d7
0:1

2.

Ron Erickson - Arman Goplen
Chinook, , 1996

1. ♞f3 ♞f6 2. b4 e5 3. ♞:e5
♙:b4 4. a3 ♙a5 5. ♙b2 c6 6. e3
d5 7. ♙e2 ♞bd7



8. f4 0-0 9. 0-0 c5 10. d4 cd 11.
ed ♞e4 12. ♙f3 f6 13. ♞g4
♞b6 14. ♞d3 ♞c4 15. ♙:e4
♙:g4 16. ♙:h7+ ♙h8 17. ♙c1
f5 18. h3 ♙e2 19. ♞:e2 ♙:h7
20. ♞d2 ♙b6 21. c3 ♖f6 22.
♞h5+ ♙g6 23. ♞f3 ♞f8 24.
♞e5 ♖h6 25. ♞g5 ♙d7 26.
♞g3 ♙h4 27. ♞f3 ♖d8

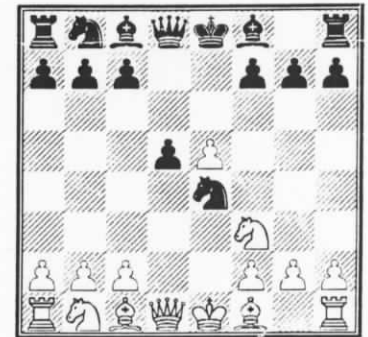


28. g4 fg 29. ♞:g4 ♞f6 30. ♖b1
b6 31. f5 ♙h7 32. ♙f4 ♖e8 33.
♞:c4 dc 34. ♙e5 ♞e7 35. f6
♞e6 36. f7 1:0

3.

Arman Goplen - Doug Hanson
Chinook, , 1996

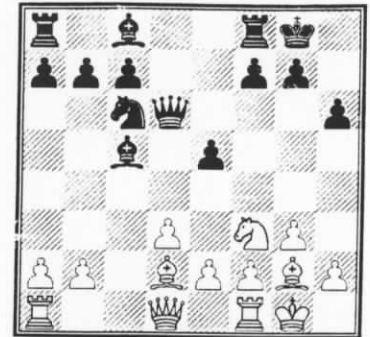
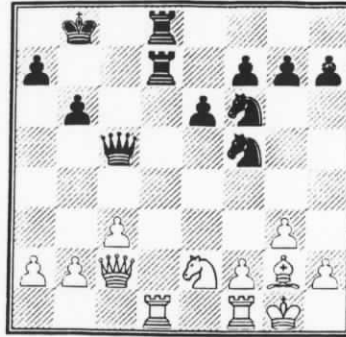
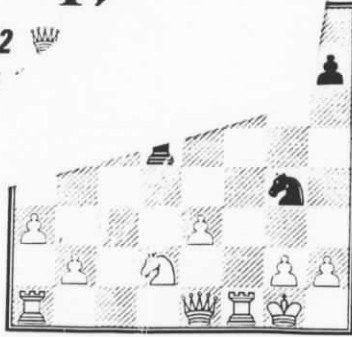
1. e4 e5 2. ♞f3 ♞f6 3. d4 ♞:e4
4. de d5



5. a3 ♙c5 6. ♙e3 ♙:e3 7. fe
♙g4 8. ♙e2 ♞c6 9. ♞bd2 0-0
10. 0-0 ♞e7 11. c4 ♖ad8 12. cd
♖:d5 13. ♞e1 ♞:d2 14. ♞:d2
♞:e5 15. ♙:g4 ♞:g4

Support Chess in Montana

♙c2 ♙
♖f4



16. ♖f3 ♖e8 17. e4 ♙e5 18. ♖h3 ♙d4+ 19. ♙f1 ♙:d2 20. ♙g3 ♖:e4 21. ♙h4 ♖f5+ 22. ♙g1 ♙d4+ 23. ♙h1 ♖f2+ 0:1

4.

Kevin Smith - Thad Suits
Chinook, , 1996

1. e4 c6 2. d4 d5 3. ♘c3 de 4. ♖:e4 ♙f5 5. ♖c3 e6 6. ♖f3 ♖d7 7. g3 ♙c7 8. ♙f4 ♙d6



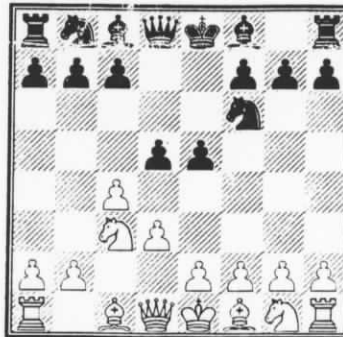
9. ♙:d6 ♙:d6 10. ♖h4 ♖e7 11. ♙g2 ♖f6 12. ♖:f5 ♖:f5 13. ♖e2 0-0-0 14. c3 ♖d7 15. 0-0 ♖hd8 16. ♙a4 ♙b8 17. ♙c2 c5 18. dc ♙:c5 19. ♖ad1 ♖d5 20. ♙e4 ♖f6 21. ♙c2 b6

22. ♖:d7 ♖:d7 23. ♖f4 ♙d6 24. ♙f3 g5 25. ♖h5 ♖:h5 26. ♙:h5 ♙c6 27. ♖d1 ♙c7 28. ♖:d7+ ♙:d7 29. g4 ♖h4 30. ♙:h7 ♙d1# 0:1

5.

Jim Skovran - Thad Suits
Chinook, , 1996

1. c4 e5 2. ♖c3 ♖f6 3. d3 d5



4. ♖:d5 ♖:d5 5. cd ♙:d5 6. ♖f3 ♙c5 7. g3 ♖c6 8. ♙g2 0-0 9. 0-0 ♙d6 10. ♙d2 h6

11. ♙c3 ♖d4 12. e3 ♖:f3+ 13. ♙:f3 c6 14. ♖fd1 1/2:1/2

6.

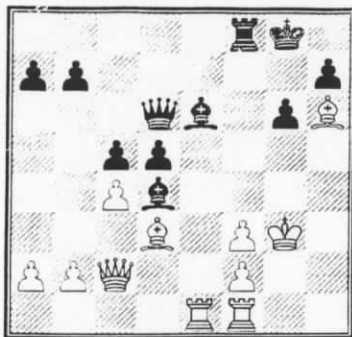
Jim Skovran - Doug Hanson
Chinook, , 1996

1. c4 g6 2. ♖c3 ♙g7 3. d4 c5 4. d5 d6 5. e4 f5 6. ♙d3 fe 7. ♖:e4 ♖d7 8. ♖f3 ♖df6 9. ♙c2 ♖:e4



10. ♙:e4 ♖f6 11. ♙d3 0-0 12. ♖g5 e6 13. de ♙e7 14. 0-0 ♖g4 15. ♙d2 ♙d4 16. ♖f3 ♖:f3 17. gf ♖:h2 18. ♙:h2 ♙:e6 19. ♙g3 ♖f8 20. ♖ae1 d5 21. ♙h6 ♙d6+

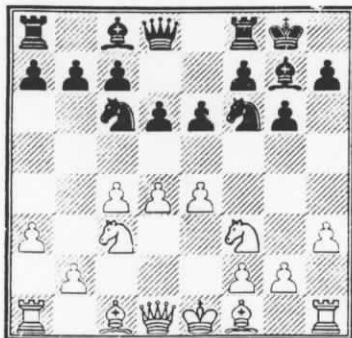
The Montana Chess Association Newsletter



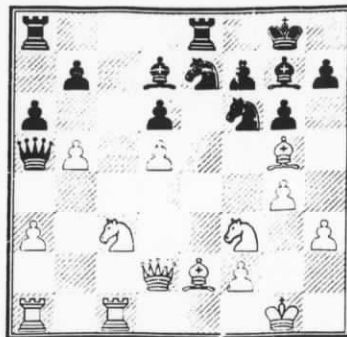
22. f4 ♖g7 23. ♖:e6 ♔:e6 24. ♖:g7 ♔:g7 25. cd ♔d5 26. ♔c3+ ♔g8 27. ♔e5 ♔d7 28. d6 h5 29. ♖c4+ ♔h7 30. ♔e7+ ♖f7 31. ♔:f7+ 1:0

7.
Richard Stuckey - Arman Goplen
Chinook, , 1996

1. c4 ♖f6 2. ♖c3 g6 3. e4 d6 4. d4 ♖c6 5. ♖f3 ♖g7 6. h3 0-0 7. a3 e6



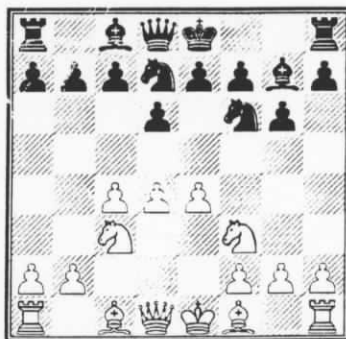
8. d5 ed 9. c: ♖e7 10. ♖e2 c6 11. ♖g5 ♖e8 12. 0-0 cd 13. ed a5 14. ♔d2 ♔a5 15. b4 ♔b6 16. ♖e3 ♔d8 17. b5 ♖f5 18. ♖g5 ♔a5 19. ♖fc1 ♖d7 20. g4 ♖e7



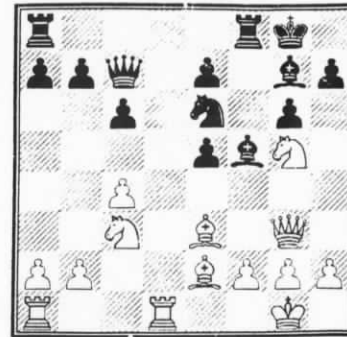
21. ♖:f6 ab 22. ♖:g7 ♔:g7 23. ♔d4+ ♔g8 24. ♔f6 ♔b6 25. ♖g5 ♖f8 26. ♔:e7 h6 27. ♔:d7 hg 28. ♖e4 f5 29. ♖:g5 1:0

8.
Richard Stuckey - Bill McBroom
Turkey Open, , 1996

1. c4 ♖f6 2. ♖c3 g6 3. ♖f3 ♖g7 4. e4 d6 5. d4 ♖bd7



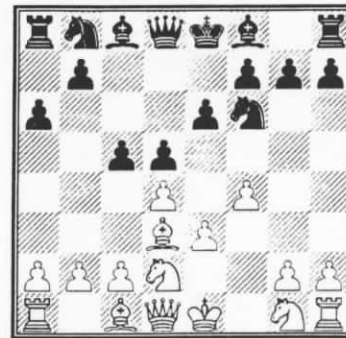
6. e5 de 7. de ♖g4 8. e6 fe 9. ♖g5 ♖c5 10. ♔:g4 0-0 11. ♖e2 e5 12. ♔g3 ♖f5 13. 0-0 c6 14. ♖d1 ♔c7 15. ♖e3 ♖e6



16. ♖:e6 ♖:e6 17. ♖e4 ♔a5 18. ♖d2 ♔b6 19. b3 ♖f5 20. c5 ♔c7 21. ♖g5 ♔c8 22. ♖:h7 ♔:h7 23. ♔h4+ ♔g8 24. ♔:e7 ♔d7 25. ♖c4+ 1:0

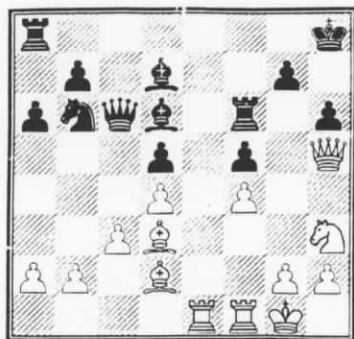
9.
Michael Jensen - Jonni Ammond
Turkey Open, , 1996

1. d4 d5 2. e3 a6 3. ♖d3 ♖f6 4. ♖d2 e6 5. f4 c5



6. c3 cd 7. ed ♖d6 8. ♖h3 ♔c7 9. 0-0 h6 10. ♖f3 ♖c6 11. ♔e2 0-0 12. ♖e5 ♖d7 13. ♖d2 f5 14. ♖:c6 ♔:c6 15. ♔:e6+ ♔h8 16. ♔g6 ♖f6 17. ♔h5 ♖b6 18. ♖ae1 ♖d7

The Montana Chess Association Newsletter



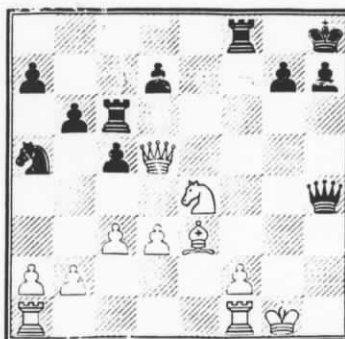
19. ♖g5 ♔g8 20. ♖f3 ♕c7 21. ♖e5 ♜af8 22. ♜è2 ♙e8 23. ♕h3 ♞a4 24. ♙e1 ♞b6 25. ♙h4 ♙:e5 26. fe ♜c6 27. ♙:f5 ♜:f5 28. ♕:f5 1:0

10.
Robert Martin - Dan McCourt
Turkey Open, , 1996

1. ♖f3 b6 2. g3 ♙b7 3. ♙g2 f5
4. d3 ♖f6 5. 0-0 e6 6. ♖c3 ♙e7
7. e4 fe 8. ♖g5 0-0 9. ♖g:e4
♖c6



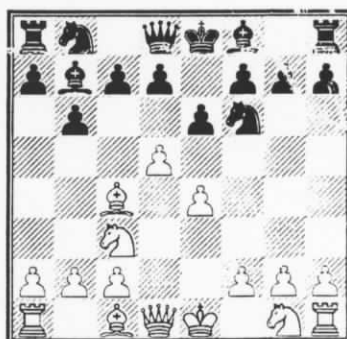
10. ♙e3 ♖d5 11. ♖:d5 ed 12.
♖d2 ♖a5 13. c3 c5 14. ♕h5
♜c8 15. ♙:d5+ ♙:d5 16.
♕:d5+ ♔h8 17. ♖e4 ♜c6 18.
h4 ♙:h4 19. gh ♕:h4



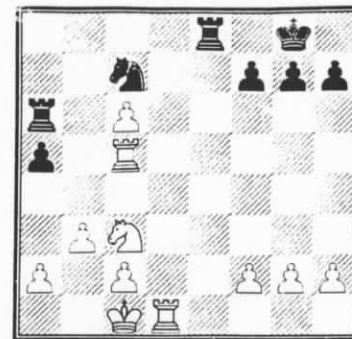
20. ♖g3 ♕g4 21. ♕h5 ♕e6 22.
♜ae1 ♕:a2 23. ♜e2 ♜g6 24. b4
♜:g3+ 25. fg ♜:f1+ 26. ♔:f1
♕b+ 27. ♔f2 1:0

11.
Chris McCourt - Bob Rajala
Turkey Open, , 1996

1. d4 ♖f6 2. ♖c3 e6 3. e4 b6 4.
♙c4 ♙b7 5. d5



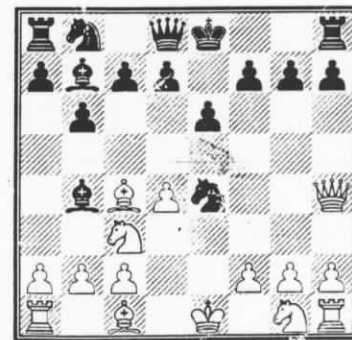
5... ed 6. ed ♙b4 7. ♖e2 ♕e7
8. ♙e3 ♖e4 9. ♕d3 0-0 10.
0-0-0 ♙:c3 11. ♖:c3 ♖c5 12.
♕d4 d6 13. ♜he1 ♕d8 14. ♕g4
♕d7 15. ♜d4 ♜e8 16. ♕g3
♙c8 17. ♙b5 c6 18. dc ♕c7 19.
♕:d6 ♖ba6 20. ♕:c7 ♖:c7 21.
♜ed1 ♙e6 22. b3 a6 23. ♙c4
♙:c4 24. ♜:c4 a5 25. ♙:c5 bc
26. ♜:c5 ♜a6



27. ♜d7 ♖e6 28. ♜c4 ♜aa8 29.
c7 ♜c8 30. ♖b5 ♔f8 31. ♖d6
♖:c7 32. ♖:e8 ♜:e8 33. ♜:c7
♜e2 34. ♜c8+ ♜e8 35. ♜:e8+
♔:e8 36. ♜a7 g5 37. ♜:a5 h6
38. ♜d5 1:0

12.
Jim Skovran - Jan Johanson
Turkey Open, , 1996

1. e4 b6 2. ♙c4 e6 3. d4 ♙b7 4.
♖c3 ♙b4 5. ♕g4 ♖f6 6. ♕h4
♖:e4

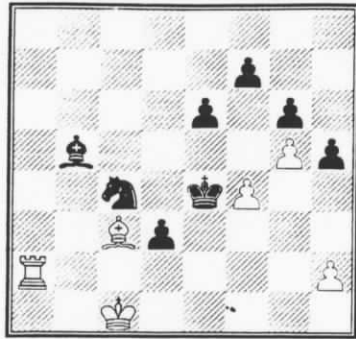


7. ♕d8+ ♔:d8 8. ♖e2 c5 9. dc
♙:c3+ 10. ♖:c3 ♖:c3 11. bc
bc 12. ♙e3 d6 13. 0-0-0 ♔e7
14. ♜d2 ♖d7 15. f4 g6 16.
♜hd1 d5 17. g4 h5 18. g5 ♙c6
19. ♙f1 ♜ab8 20. c4 d4 21.
♙g! ♜b6 22. ♜d3 ♙a4 23. ♜a3
♜h4 24. ♙d3 ♖b6 25. ♜e1
♖:c4 26. c3 ♖:a3 27. cb c4 28.
♙:d4 cd 29. ♙:h8 ♖c4 30. ♙c3

Support Chess in Montana

The Montana Chess Association Newsletter

♙c6 31. ♖f1 ♔d6 32. ♖f2 ♔d5
33. a4 a6 34. b5 ab 35. ab ♙:b5
36. ♖a2 ♙e4

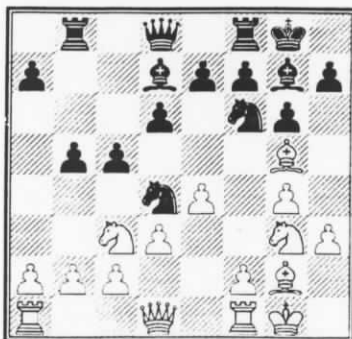


37. ♙d2 ♘:d2 38. ♙:d2 ♙:f4
39. ♖a5 ♙c6 40. ♙:d3 ♙e4+
41. ♙e2 ♙f5 42. h4 ♙g3 43.
♙e3 ♙:h4 44. ♙f4 ♙h3 45.
♖e5 ♙g2 46. ♖e2+ ♙g1 47.
♙g3 ♙f1 48. ♖e5 ♙g4 49. ♖e4
♙f5 50. ♖e3 ♙g4 51. ♖e4
1/2:1/2

13.

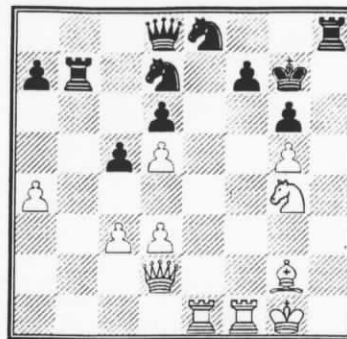
Rudi Katzl - Steve Svelmoe
Turkey Open, , 1996

1. e4 c5 2. ♘c3 d6 3. g3 g6 4.
♙g2 ♙g7 5. ♘ge2 ♘c6 6. 0-0
♘f6 7. d3 ♙d7 8. h3 ♖b8 9. g4
0-0 10. ♘g3 b5 11. ♙g5 ♘d4



12. f4 ♙c6 13. f5 ♘d7 14. ♘d5
♙:d5 15. ed b4 16. ♘e4 ♘b6
17. f6 ef 18. ♙:f6 ♙:f6 19.
♘:f6+ ♙g7 20. c3 bc 21. bc

♘b5 22. ♙d2 ♘d7 23. g5 ♖h8
24. a4 ♘c7 25. ♖ae1 h6 26. h4
hg 27. hg ♘e8 28. ♘g4 ♖b7

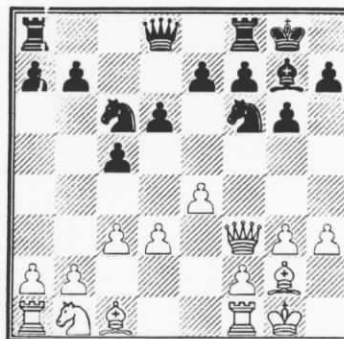


29. d4 ♖h5 30. dc ♘:c5 31.
♙d4+ ♙f8 32. ♘h6 ♘g7 33.
♖f6 ♖:g5 34. ♖ef1 ♘f5 35.
♖6:f5 ♖:f5 36. ♘:f5 gf 37. ♖:f5
♙e8 38. ♙h8+ ♙d7 39. ♖:f7+
♙c8 40. ♖f8 1:0

14.

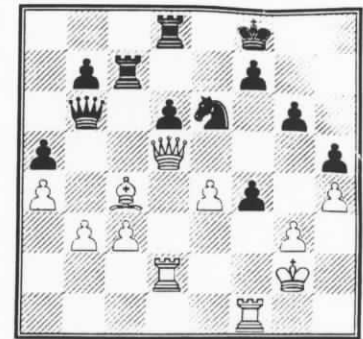
Jan Johanson - Greg Nowak
Turkey Open, , 1996

1. ♘f3 c5 2. g3 g6 3. ♙g2 ♙g7
4. d3 ♘c6 5. 0-0 d6 6. e4 ♙g4
7. h3 ♙:f3 8. ♙:f3 ♘f6 9. c3 0-0



10. a4 ♙d7 11. ♙e2 e6 12. ♙e3
♘e8 13. ♘a3 ♘c7 14. ♖fd1
♖ac8 15. ♘c2 ♙e7 16. d4 cd
17. ♘:d4 ♘:d4 18. ♙:d4 ♙:d4
19. ♖:d4 e5 20. ♖d2 ♘e6 21.
♙d3 ♖fd8 22. ♖ad1 ♘c5 23.
♙b5 ♙c7 24. f3 a6 25. ♙b4

♖b8 26. ♙f1 h5 27. h4 ♙c6 28.
b3 a5 29. ♙c4 ♙b6 30. ♙g2
♖bc8 31. ♙d5 ♘e6 32. ♙c4
♙f8 33. ♖f1 ♖c7 34. f4 ef

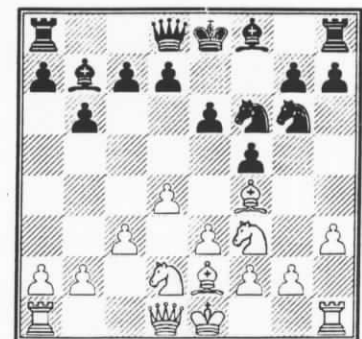


35. gf ♙e3 36. ♖df2 ♘c5 37.
♖e2 ♙:c3 38. e5 ♖e7 39. f5
♖dd7 40. fg ♖e6 41. ♖f3 ♖:e5
42. ♙h3 ♘e6 43. ♙h2 ♙c1
0:1

15.

John Rayburn - Jan Johanson
Turkey Open, , 1996

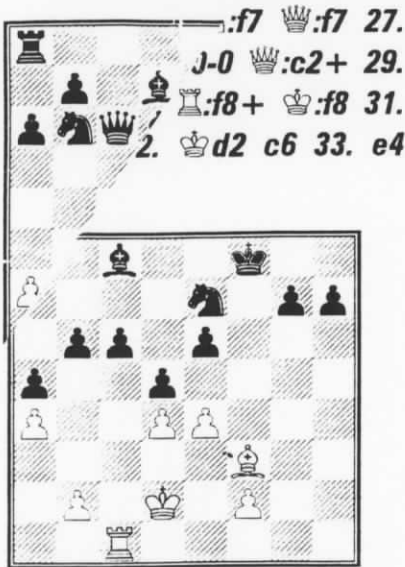
1. d4 b6 2. ♘f3 ♙b7 3. ♙f4 e6
4. e3 f5 5. ♘bd2 ♘f6 6. h3 ♘c6
7. ♙e2 ♘e7 8. c3 ♘g6



9. ♙h2 ♙d6 10. a4 ♙:h2 11.
♖:h2 a5 12. h4 ♘g4 13. ♖h3
♙f6 14. h5 ♘e7 15. ♘h2 ♙:g2
16. ♘:g4 fg 17. ♖g3 ♙b7 18.
♙:g4 0-0 19. ♙e2 ♖f7 20. ♙f3
♙a6 21. ♘e4 ♙h4 22. c4 d5 23.
♖g4 ♙h2 24. ♘g5 ♙:c4 25.

Support Chess in Montana

The Montana Chess Association Newsletter

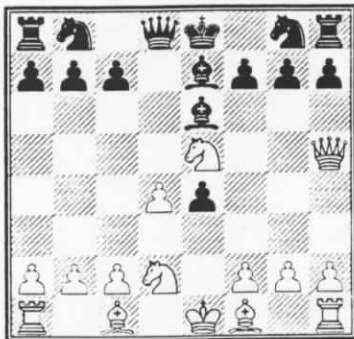


1. f7 ♖:f7 27. ♞-0 ♞:c2+ 29. ♜:f8+ ♞:f8 31. ♞:d2 c6 33. e4

34. e5 ♙:d7 35. ♙:g4 ♞:f5 36. ♞:d3 ♞:e7 37. b3 ♞:h6 38. ♙:h3 ♞:f7 39. f4 g6 40. ♞:g1 ♞:d8 41. f5 ef 42. ♞:h1 ♙:e6 43. ♙:g2 h5 44. ♞:c1 ♞:d7 45. ♙:f3 ♙:f7 46. ♞:b1 c5 47. dc bc 48. ♞:c1 ♞:c6 49. b4 0:1

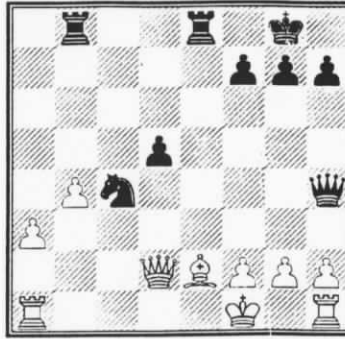
16. Zygmund Mayer - Paul Motta
.. 1996

1. e4 e5 2. ♞:f3 d5 3. ♞:e5 ♙:d6 4. d4 de 5. ♞:h5 ♙:e6 6. ♞:d2 ♙:e7



7. c3 ♞:f6 8. ♞:e2 ♙:d5 9. ♞:b5+ ♞:c6 10. c4 a6 11. ♞:a4 b5 12. cb ♞:e5 13. de ab 14. ♙:b5+ ♞:d7 15. ♞:c2 c6 16.

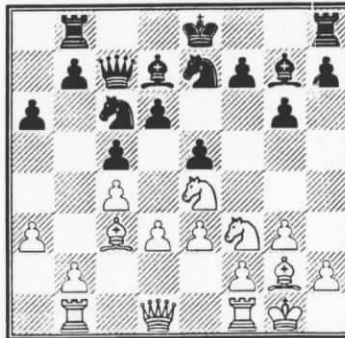
♙:e2 ♞:e5 17. ♞:e4 ♙:b4+ 18. ♞:f1 ♞:h4 19. ♞:c3 0-0 20. ♞:d5 cd 21. a3 ♞:fe8 22. ♙:d2 ♙:d2 23. ♞:d2 ♞:ab8 24. b4 ♞:c4



25. ♞:d3 ♞:f6 26. ♞:c1 ♞:b2 27. ♞:c2 ♞:a1+ 28. ♞:d1 ♞:a3 29. ♞:d5 ♞:bc8 30. ♞:d4 ♞:b3 1/2:1/2

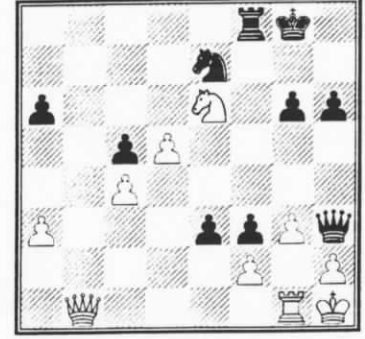
17. The Community - Greg Nowak
.. 1996

1. g3 g6 2. ♙:g2 ♙:g7 3. ♞:f3 d6 4. d3 c5 5. c4 ♞:c6 6. ♞:c3 ♞:b8 7. ♞:b1 a6 8. ♙:d2 ♞:h6 9. 0-0 ♞:f5 10. e3 ♙:d7 11. ♞:e4 ♞:c7 12. ♙:c3 e5 13. a3 ♞:fe7



14. b4 f5 15. ♞:ed2 0-0 16. bc dc 17. ♞:b3 b6 18. ♞:c2 h6 19. ♞:fd1 ♞:d8 20. ♞:b2 ♞:f7 21. ♞:fd2 ♙:c6 22. d4 ♙:g2 23. ♞:g2 cd 24. ed e4 25. d5 ♞:e5 26. ♞:d4 ♞:d3 27. ♞:c2 ♞:c5 28.

♞:2b3 ♙:d4 29. ♞:d4 f4 30. ♙:b4 f3+ 31. ♞:h1 ♞:c8 32. ♙:c5 ♞:h3 33. ♞:g1 bc 34. ♞:e6 ♞:b1 35. ♞:b1 e3



36. ♞:f4 ♞:f4 37. gf ef 38. ♞:g6+ ♞:f7 39. ♞:f6+ ♞:f6 40. ♞:b2+ ♞:f7 41. ♞:f2 ♞:g2+ 42. ♞:g2 fg+ 43. ♞:g2 ♞:f5 44. ♞:f3 ♞:d6 45. ♞:g4 ♞:c4 46. a4 ♞:d6 47. h4 ♞:f6 0:1

Support Chess in Montana

Montana Chess Association Newsletter

Tournament Tables

DECEMBER 5TH UCCC ULTIMATE SPEED CHAMPIONSHIP

Name	RD 1	RD 2	RD 3	RD 4	RD 5	RD 6	RD 7	RD 8	RD 9	RD 10	RD 11	RD 12	TOTAL
Greg Nowak	X	1	1	1	1	1	1	1	1	1	1	1	11
Shughart	0	X	0	0	1	.5	1	.5	1	1	0	1	6
Wabisky	0	1	X	0	1	0	0	0	0	1	0	0	3
Gross	0	1	1	X	1	1	1	.5	0	0	1	0	6.5
Leader	0	0	0	0	X	0	0	0	0	0	0	0	0
Anderson	0	.5	1	0	1	X	1	1	1	1	0	1	7.5
Gisselbeck	0	0	1	0	1	0	X	0	0	0	1	0	3
Mc Broom	0	.5	1	.5	1	0	1	X	1	1	0	0	6
Cain	0	0	1	1	1	0	1	0	X	0	0	0	4
Mc Court	0	0	0	1	1	0	1	0	1	X	0	0	4
Jensen	0	1	1	0	1	1	0	1	1	1	X	0	7
Svelmoe	0	0	1	1	1	0	1	1	1	1	1	X	8

GOBBLER GAME 30 OPEN

Name	RD1	RD2	RD3	RD4	RD5	TOTAL
Greg Nowak	W	W	L	W	W	4
Rudy Katzl	W	W	W	L	W	4
John Rayburn	W	L	W	W	W	4
Rich Hall	W	D	W	W	L	3.5
Paul Svelmoe	W	W	L	W	L	3
Dale Gross	L	W	L	W	W	3
Bob Leader	L	W	W	L	W	3
Hans Anderson	W	D	W	L	L	2.5
Eric Gilbertson	W	L	L	W	L	2
Mike Joyce	L	W	L	L	W	2
Justin Johnson	L	W	W	L	L	2
Paul Berberick	L	L	W	W	WD	2
Nolan Mowbray	L	BYE	W	L	L	2
Nick Lopez	BYE	L	L	L	W	2
Karl Semitz	W	L	L	WD	WD	1
George Gupton	L	L		W	L	1
Carmine Mowbray	L	L	L	L	BYE	1

Support Montana Chess

Montana Chess Association Newsletter

MONTANA POSTAL CHESS CHAMPIONSHIP

Name	RD1	RD2	RD3	RD4	RD5	RD6	RD7	RD8	RD9	TOTAL
Preston, Curtis	X	.5	0	1	0	0	0	0	0	1.5
Brennan, Leslie	.5	X	1	1	1	0	.5	0	0	4.0
Long, Michael	1	0	X	1	1	0	0	0	1	4.0
Partney, Louis	0	0	0	X	0	0	0	0	0	0
Wolberd, Patrick	1	0	0	1	X	0	0	0	.5	2.5
Motta, Paul	1	1	1	1	1	X	.5	1	1	7.5
Duke, David	1	.5	1	1	1	.5	X	F	1	6.0
Mayer, Zygmund	1	1	1	1	1	0	F	X	1	6.0
Price, Donald	1	1	0	1	.5	0	0	0	X	3.5

TURKEY OPEN

	NAME	RD1	RD2	RD3	RD4	RD5	RD6	TOTAL
1	Nowak, Greg	2175	W25	W4	W3	W7	D2	4.5
2	Jensen, Michael	2021	W20	W5	D7	W11	D1	4
3	Katzl, Rudolf	2000	W23	W8	L1	W9	W10	4
4	Skovron, James	1801	W6	L1	W12	W17	D7	3.5
5	Yunker, Gary	1707	W16	L2	D6	W13	W11	3.5
6	Yunker, Jeremy	1352	L4	W20	D5	W18	W12	3.5
7	Johansson, Jan	2030	W14	W9	D2	L1	D4	3
8	Hansen, Douglas	1681	W17	L3	W21	L10	W16	3
9	Ericksen, Ron	1752	W24	L7	W16	L3	W17	3
10	Svelmoe, Stephen	1850	W22	D11	H	W8	L3	3
11	Martin, Robert	1633	W13	D10	W18	L2	L5	2.5
12	Benyenal, Haluk	UNR	D19	W25	L4	W21	L6	2.5
13	Pyterek, Allen	UNR	L11	W22	W14	L5	D18	2.5
14	Rayburn, John	1538	L7	W24	L13	D15	W20	2.5
15	Mc Broom, William	1666	L21	D19	D25	D14	W22	2.5
16	McCourt, Chris	1323	L5	W23	L9	W19	L8	2
17	Joyce, Michael	1068	L8	B	W19	L4	L9	2
18	McCourt, Dan	1700	H	W21	L11	L6	D13	2
19	Bailey, Brian	1660	D12	D15	L17	L16	W24	2
20	Ammond, Jonni	1575	L2	L6	D22	W24	L14	1.5
21	Stuckey, Richard	1212	W15	L18	L8	L12	D23	1.5
22	Griffin, David	1416	L10	L13	D20	W23	L15	1.5
23	Rajala, Robert	1520	L3	L16	D24	L22	D21	1
24	Furdell, William	1326	L9	L14	D23	L20	L19	.5
25	Brownlee, Keith	1600	L1	L12	D15	U	U	.5

Support Montana Chess