



Editor - Les Brennan, P.O. Box 2404
Colstrip, MT 59323 (406) 748-2154

MONTANA CHESS NEWS

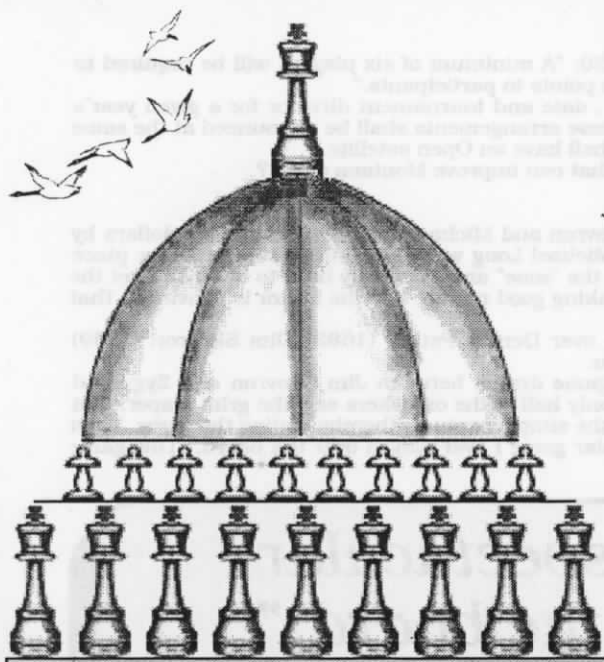
Montana Chess News is published by the MONTANA CHESS ASSOCIATION, an affiliate of the U. S. CHESS FEDERATION Promoting Chess Excellence by Education and Competition Membership / Subscription = \$6 / yr regular, \$3 / yr junior

CARPENTER & JENSEN TOP UCCC 3RD SUMMER OPEN

LONG & STUBBERUD TIE AT HELENA OPEN

JENSEN WINS UCCC 1ST FALL OPEN

LONG, SKOVRON & SUITS TIE AT CHINOOK OPEN



HELENA OPEN

CHESS with a capitol see

Free coffee, orange juice and donuts, rating points, a change of venue and Grand Prix points called to twenty, who felt that a weekend at the capital, engaged in one of the world's most taxing mental activities, namely chess, was more appealing than winterizing the house.

Kip Stubberud, a state capital home-boy and coorganizer of this resurrected event, took First Place on tie-breaks over Michael Long, who, like Kip, scored an impressive four points out of five.

And there were upsets. Ron Erickson outplayed Kip Stubberud in round one. Michael Long beat Zygmund Mayer in a Goring Gambit wherein Michael proffered his b2 pawn as well as his d4 and c3 pawns. And as usual, Eriel Mayer racked up another upset - David Duke the latest victim. Capitalize on the lessons of these games and, as autumn leaves fall, so will your opponents.



What's New

Helena Open:

Dean Drake drove from Seattle to Montana on Friday, directed and played in the Helena Open Saturday and Sunday, drove all night Sunday to Boise to drop his son off, and then continued on to Seattle. But Dean didn't do this for himself. This he did out of his sense of duty and his love for Montana. Dean devoted much time and energy in preparation for the Helena Open, and he was determined to ensure that it all went just so. And it did. Dean brought his body and soul to the Helena Open, but because of his schedule's taxing demands, his vim and vigor went to Helena handbasket.

But those who came enjoyed Dean's attention to details. The comfort zone was maximized by freebies such as coffee, juice and donuts. And the tournament proper? Fun was had by all. And there were some pretty good games. You can check them out for yourself.

Twenty players in all showed up, and of 100 games, there should be something of educational value in going back over the games. Unfortunately, the only score sheets available were single (non carbon-copy) sheets. So all of the score sheets were not turned in. But the best of what was submitted is in the newsletter for you.

32B3. Class winners tie with place winners

"If winners of class prizes tie with winners of place prizes, all the cash prizes involved shall be summed and divided among the tied winners..."

guidelines of "Official Rules of Chess" rule 32B3 were followed, combining the class prize and the place prize. Michael and Kip Stubberud then split the total of those two monies and each received \$50. Another fine upset was Ron Erickson's win over Kip Stubberud in round one. This game is annotated by both Ron and Kip in this issue. Bravo and accolades to all the upsetters!

Other prizes awarded were Top Under 1650 to Bob Martin and Sherwood Moore (\$20 each) and Top Under 1400 to Curtis Preston (\$32.50).

New President:

The reason for all of Dean Drake's travels is that he has been transferred to Seattle by his employer. This came as a disappointing surprise to Dean, for he was truly enjoying the Montana chess scene (who among us doesn't?). Not only did Dean enjoy Montana chess, but he had energy that he had planned to devote to bettering the Montana Chess Association. He heard the concerns of the members and acted on them in the short time he represented us. Several bylaws have been changed by vote of the officers under his leadership. This action was carried out as a result of members' requests, followed by much discussion between the elected officers.

This sudden void in MCA's organization led to a search for another volunteer for the office. Kip Stubberud, who also was instrumental in the recent bylaw improvements, as well as a great help in organizing the Helena Open, found the responsibility of presidency in his lap by default. It was, however, in his interest, as well as that of MCA, that he recommended the search go out for another volunteer. And we have one.

Sherwood Moore, of Missoula, is now our MCA President. All concerns, recommendations, complaints and threats should be addressed to him at the following address: Sherwood Moore, President/MCA, 453 Minnesota, Missoula, MT 59802.

Thanks Sherwood!

Bylaw Changes:

A few changes:

Effective immediately, this new sentence has been added to Bylaws section 20; "A minimum of six players will be required to participate in a Grand Prix event to qualify the awarding of official Montana Grand Prix points to participants."

Also Bylaws section 17, sentence two has been modified to read "The site, date and tournament director for a given year's Closed State Championship shall be established by the MCA Board of Directors, and these arrangements shall be announced at the same time that year's State Open is first listed in Montana Chess News. The Championship shall have an Open satellite."

These changes are the result of input from members. Do you have any ideas that can improve Montana chess?

Chinook:

Great weather for a Chinook! Thad Suits, Jim Skovron and Michael Long divided the top dollars by virtue of their mutual 4 out of 5 game achievements. The \$25 division prize won by Michael Long was again added to the pot for place finishers as per rule 32B3 yielding the higher pay out to Michael. Michael was again in the "zone" and extremely hard to beat. And yet the same can be said of Thad Suits and Jim Skovron. These three juggernauts just kept making good moves, and the Editor is convinced that therein lies the whole secret to chess.

Griff Bye (1295), from Kevin, MT, won the Biggest Upset prize by his win over Dennis Petrak (1680). Jim Skovron (1839) defeated Zygmund Mayer (2080) in round three and Jan Johansson (2075) in round four.

There were some tense moments that thrilled onlookers, such as the end game drama between Jim Skovron and Zygmund Mayer, when Zygmund placed his Rook on one of Jim's Pawn's attacking squares and only half of the onlookers saw the grim reaper. Jim knew which way his Pawns were going, however, and he brought the house down with the simple capture, thereby ending the game. Then there was the game Duke - Johansson, which Jan describes as "...the most spectacular game I ever played over the board." This game is annotated by Jan. Check it out!

"I think this is the most spectacular game I ever played over the board."

- Jan Johansson see page 7

UCCC 3RD SUMMER OPEN 8/10,17,24/95

| | NAME | RTG | R1 | R2 | R3 | TOT |
|---|-------------------|------|-----|-----|-----|-----|
| 1 | J. Michael Jensen | 1934 | W 7 | W 3 | D 2 | 2.5 |
| 2 | Romie Carpenter | 1800 | W 6 | W 5 | D 1 | 2.5 |
| 3 | John Rayburn | 1400 | W 4 | L 1 | W 6 | 2 |
| 4 | William McBroom | 1735 | L 3 | D 6 | W 5 | 1.5 |
| 5 | Don Gisselbeck | 1393 | BYE | L 2 | L 4 | 1 |
| 6 | Sherwood Moore | 1616 | L 2 | D 4 | L 3 | 0.5 |
| 7 | Ron Erickson | 1714 | L 1 | BYE | WD | 0 |

UCCC 1ST FALL OPEN 9/7,14,21/95

| | NAME | RTG | R1 | R2 | R3 | TOT |
|---|-------------------|------|-----|-----|-----|-----|
| 1 | J. Michael Jensen | 1934 | W 4 | W 2 | W 3 | 3 |
| 2 | Romie Carpenter | 1800 | W 5 | L 1 | W 6 | 2 |
| 3 | Ted Catton | 1754 | W 6 | D 4 | L 1 | 1.5 |
| 4 | William McBroom | 1735 | L 1 | D 3 | X 5 | 1.5 |
| 5 | Daniel McCourt | 1700 | L 2 | D 6 | F 4 | 0.5 |
| 6 | John Rayburn | 1400 | L 3 | D 5 | L 2 | 0.5 |

HELENA OPEN 9/30, 10/1/95

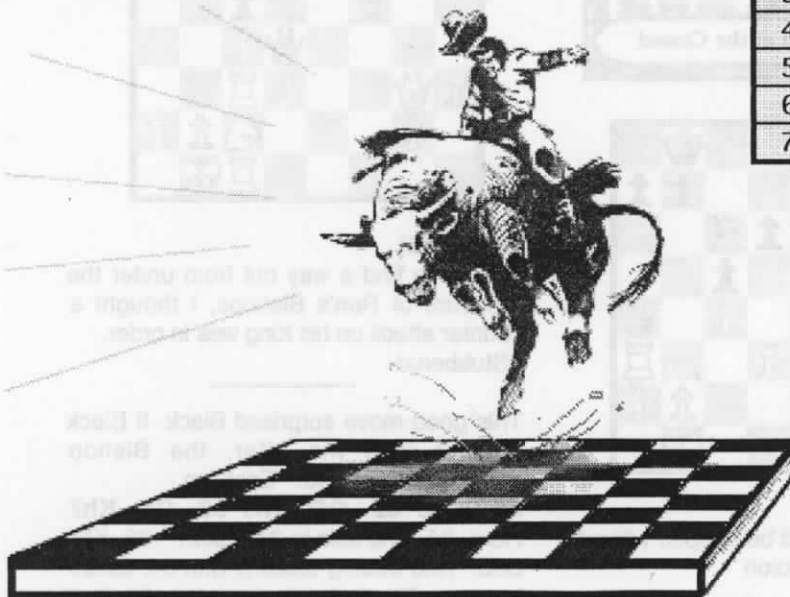
| | NAME | RTG | R1 | R2 | R3 | R4 | R5 | TOT |
|----|-------------|------|-----|-----|-----|-----|-----|-----|
| 1 | Stubberud | 2066 | L10 | W18 | W 2 | W 9 | W 3 | 4 |
| 2 | Long | 1733 | W19 | W15 | L 1 | W14 | W 5 | 4 |
| 3 | Carpenter | 1800 | W18 | W13 | BYE | W 5 | L 1 | 3.5 |
| 4 | Hansen | 1679 | W16 | D 9 | BYE | D 7 | W14 | 3.5 |
| 5 | Z. Mayer | 2000 | W11 | W 8 | W14 | L 3 | L 2 | 3 |
| 6 | Duke | 1777 | L15 | W20 | W13 | D10 | D 7 | 3 |
| 7 | Borchardt | 1776 | L13 | W19 | W11 | D 4 | D 6 | 3 |
| 8 | D. Drake | 1723 | W17 | L 5 | D12 | D13 | W15 | 3 |
| 9 | McBroom | 1735 | W20 | D 4 | BYE | L 1 | D12 | 2.5 |
| 10 | Erickson | 1714 | W 1 | L14 | W15 | D 6 | U-- | 2.5 |
| 11 | Martin | 1640 | L 5 | W17 | L 7 | D12 | W19 | 2.5 |
| 12 | Moore | 1616 | L14 | W16 | D 8 | D11 | D 9 | 2.5 |
| 13 | Baily | 1650 | W 7 | L 3 | L 6 | D 8 | W17 | 2.5 |
| 14 | Kuba | 1980 | W12 | W10 | L 5 | L 2 | L 4 | 2 |
| 15 | E. Mayer | 1471 | W 6 | L 2 | L10 | W16 | L 8 | 2 |
| 16 | Preston | 1348 | L 4 | L12 | W19 | L15 | W20 | 2 |
| 17 | Brittingham | 1171 | L 8 | L11 | BYE | W18 | L13 | 2 |
| 18 | Wheatley | 1575 | L 3 | L 1 | W20 | L17 | U-- | 1 |
| 19 | Amundson | 1235 | L 2 | L 7 | L16 | W20 | L11 | 1 |
| 20 | M. Drake | 1285 | L 9 | L 6 | L18 | L19 | L16 | 0 |

CHINOOK OPEN 10/14,15/95

| | NAME | RTG | R1 | R2 | R3 | R4 | R5 | TOT |
|----|-----------|------|-----|-----|-----|-----|-----|-----|
| 1 | Suits | 1945 | W 7 | W 3 | D 4 | D 8 | W 2 | 4 |
| 2 | Skovron | 1839 | W14 | W 6 | W 8 | W 4 | L 1 | 4 |
| 3 | Long | 1729 | W13 | L 1 | W12 | W 5 | W 6 | 4 |
| 4 | Johansson | 2075 | W11 | W 5 | D 1 | L 2 | W 8 | 3.5 |
| 5 | Duke | 1811 | W12 | L 4 | W10 | L 3 | W11 | 3 |
| 6 | Brennan | 1800 | W16 | L 2 | W 7 | W 9 | L 3 | 3 |
| 7 | E. Mayer | 1457 | L 1 | W13 | L 6 | W12 | W14 | 3 |
| 8 | Z. Mayer | 2080 | W10 | W 9 | L 2 | D 1 | L 4 | 2.5 |
| 9 | Carpenter | 1805 | W15 | L 8 | W14 | L 6 | D10 | 2.5 |
| 10 | Hansen | 1680 | L 8 | W15 | L 5 | W14 | D 9 | 2.5 |
| 11 | Petrak | 1680 | L 4 | L12 | W16 | W13 | L 5 | 2 |
| 12 | Bye | 1295 | L 5 | W11 | L 3 | L 7 | W15 | 2 |
| 13 | Hofland | UNR | L 3 | L 7 | W15 | L11 | W16 | 2 |
| 14 | Furdell | 1354 | L 2 | W16 | L 9 | L10 | L 7 | 1 |
| 15 | Doulas | 1168 | L 9 | L10 | L13 | W16 | L12 | 1 |
| 16 | Walter | 1067 | L 6 | L14 | L11 | L15 | L13 | 0 |

94 - 95 MT POSTAL CHAMPSHIP FINALS

| | NAME | 1 | 2 | 3 | 4 | 5 | 6 | 7 | TOT |
|---|---------|-----|---|-----|---|---|---|---|-----|
| 1 | Brennan | X | 1 | 0.5 | 1 | 1 | 1 | 1 | 5.5 |
| 2 | Duke | 0 | X | 1 | 1 | 1 | 1 | 1 | 5 |
| 3 | Moore | 0.5 | 0 | X | 1 | 1 | 1 | 1 | 4.5 |
| 4 | Wolberd | 0 | 0 | 0 | X | 1 | 1 | 1 | 3 |
| 5 | Price | 0 | 0 | 0 | 0 | X | 1 | 1 | 2 |
| 6 | Doulas | 0 | 0 | 0 | 0 | 0 | X | 1 | 1 |
| 7 | Ammond | 0 | 0 | 0 | 0 | 0 | 0 | X | 0 |



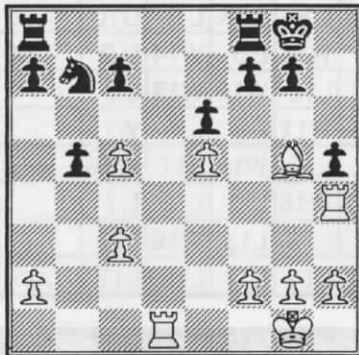
How Do You Handle
a
"WILD BULL"?

See Page 8

Recent Games

Jensen 1934 **Rayburn 1400**
UCCC 3rd Summer Open
8/17/95 **Round 2**
Owen's Defense

1. e4 b6 2. d4 Bb7 3. Nc3 e6 4. Nf3 Bb4 5. Bd3 Nf6 6. Qe2 d5 7. ed5 Qd5 8. O-O Bc3 9. bc3 Nc6 10. c4 Qd6 11. c3 Na5 12. Bg5 Nh5 13. Ne5 Nf6 14. Rfe1 h5 15. Rad1 Ng4 16. c5 Qd5 17. Be4 Qe4 18. Qe4 Be4 19. Re4 Ne5 20. de5 b5 21. Red4 O-O 22. Rh4 Nb7



23. Rxh5 Nxc5? 24. Be7 Na4 25. Bxf8 Kxf8?? 26. Rh8+ **Black Resigns.**

Carpenter 1800 **Jensen 1934**
UCCC 3rd Summer Open
8/24/95 **Round 3**
Modern Defense

1. d4 g6 2. Nf3 Nf6 3. c4 Bg7 4. g3 O-O 5. Bg2 d6 6. Nc3 Nbd7 7. O-O e5 8. e4 c6 9. Re1 Qb6 10. b3 Re8 11. Bb2 a5 12. Qd2 Ng4 13. Na4 Qa7 14. h3 Ngf6 15. Rac1 Nh5 16. de5 de5 17. c5 Qb8 18. Qe3 Qc7 19. Nd2 Nf8 20. Nc4 Be6 21. Nab6 Ra7 22. a4 Bc4 23. Nc4 Ne6 24. Bf1 Nd4 25. Nd6 Re7 26. Bd4 ed4 27. Qd3 Ra8 28. f4 Nf6 29. e5 Nd5 30. Qd4 Rf8 31. Bc4 Nb4 32. Red1 Kh8 33. Ne4 h6 34. Rd2 Qb8 35. Rcd1 Rfe8 36. Kh2 Kh7 37. Qf2 Qc7 38. Rd6 Kh8 39. Qd2 Kh7 40. Rd7 Rd7

41. Qd7 Re7 42. Qc7 Rc7 43. Rd8 Nc2 44. Nd6 and now White, having ran out of time... **Draw Agreed.**

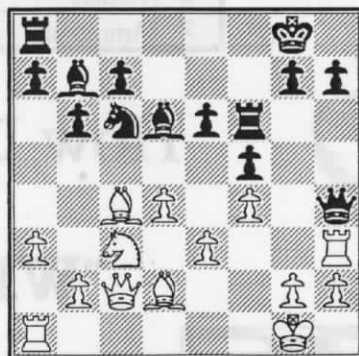
Stubberud 2066 **Erickson 1714**
Helena Open
9/30/95 **Round 1**
Nimzo-Indian Defense

Annotations by Erickson and Stubberud

1. d4 Nf6 2. c4 e6 3. Nc3 Bb4 4. e3 Ne4 5. Qc2 d5 6. Bd3 f5 7. Ne2 Qh4 8. O-O b6 9. f3 Nc3 10. Nc3 Bd6 11. f4 O-O 12. Bd2 Nc6 13. a3 dc4 14. Bc4 Rf6 15. Rf3 Bb7 16. Rh3



Kip Stubberud at the Closed



16...Nxd4
 Black's Queen would be trapped without this sacrifice. - Erickson
 [Editor's note: Interesting is 16...Qg4 17. Be2 Qxg2+ 18. Kxg2 Nxd4+ 19.

Kf2 19...Nxc2 20. Rc1 Nxa3 21. bxa3 Bxa3, or 20. Ra2 Bxf4 21 exf4 Nd4, with augmented Pawn acquisition]

17. exd4 Qg4 18. Rg3 Qh5 19. Re1 Re8 20. Rg5 Qf7 21. Qb3

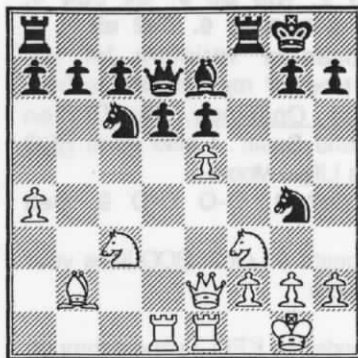


21...g6
 Because Rxf5 loomed. - Erickson
 22. Nd1 h6
 To prepare for 25...Kh7. - Erickson
 23. Nf2 c5 24. dc5 Bc5 25. Bc3 Kh7 26. Bf6 Qf6 27. Rg3 Qd4 28. Rf1 Qf4 29. Be6 Ba6 30. Rf3



31. Bxf5!
 Unable to find a way out from under the pressure of Ron's Bishops, I thought a counter attack on his King was in order. - Stubberud

This good move surprised Black. If Black doesn't take the offer, the Bishop continues with Bxh6. - Erickson
31...gxf5 32. Qf7 Kh8 33. Qf6 Kh7
 Here, 34. Rh3 fails to 34...Bxf2+ 35. Kh1 Be3. And trading Queens with 34. Qxf5+ leaves a little to be desired, but 34. Rg3 looked too good to pass up. - Stubberud



34. Rg3??

Had White checked with his Queen (34. Qxf5+), forcing the Queen trade, he would have remained a Pawn up and probably would have won the end game. - Erickson

34...Bxf2+ 35. Kxf2 Qe2+

You know it's funny, but that Queen trade line doesn't look that bad now!

- Stubberud

White Resigns.

Even though White has a material advantage after Black's sixteenth move, his pieces in play are fewer than those of Black. - Erickson

14...Rxf3!?

Kip comes up with a real cutie to hold his central Pawns intact. - Long

(More interesting than 14...d5)

-Stubberud

15. Qxf3 Ngxe5 16. Rxe5?

(In keeping with the theory that Knights are worth more than Rooks) - Stubberud

It would have been sounder to exercise a little patience here, like 16. Qf4. - Long

16...Nxe5 17. Qf4 Qc6

Kip easily sidesteps any problems on the d file. - Long

18. Qe3 Qb6 19. Qe2 Bf6 20. h3 Re8 21. Ne4 Nf3 22. Qf3 Bb2

24. Ng5!!

(With the triple threat of 25. Qxb7, 25. Qf7+ and 25. Qh5) - Stubberud

24...Rf8

(Forced) - Stubberud

Until this move, I liked Black. - Long

25. Qxf8+ Kxf8 26. Nxe6+ Ke7 27. Nxd4 Bd4 28. Rb7 Bb6 29. a5 Ba5 30. Ra7 Bb6

Naturally, both players thought they were winning here. - Stubberud

31. Ra4? d5 32. Kf1 Kf6 33. Ke2 d4 34. Kd3 Ke5 35. Ra2 Kd5 36. Re2 c5 37. Rc2 Ba5 38. f4 Bc3 39. Re2 c4 40. Kc2 d3 41. Kc3 de2 42. Kd2 Ke4 **White Resigns**

Erickson 1714

Duke 1777

Helena Open

10/1/95

Round 4

Nimzowitsch Attack

1. Nf3 c5 2. b3 d5 3. e3 Nc6 4. Bb5 Bd7 5. Bb2 e6 6. O-O Nf6 7. Bc6 Bc6 8. Ne5 Bd6 9. f4 O-O 10. d3 Nd7 11. Nc6 bc6 12. Qg4 Nf6 13. Qg3 Ne8 14. Nd2 f6 15. Qh3 Qd7 16. Rf3 Rf7 17. Raf1 a5 18. a4 Nc7 19. e4 Be7 20. f5 e5 21. Qh5 **Draw Agreed.**

Z. Mayer 2000

Carpenter 1800

Helena Open

10/1/95

Round 4

Modern Defense

1. d4 g6 2. Nc3 Bg7 3. e4 c6 4. Bc4 d6 5. Nge2 Nd7 6. Be3 Ngf6 7. f3 O-O 8. a4 Nb6 9. Bb3 d5 10. e5 Ne8 11. Qd2 Nc7 12. Bh6 Nc4 13. Bc4 dc4 14. Bg7 Kg7 15. Rd1 Nd5 16. Ne4 f6 17. h4 h6 18. h5 g5 19. f4 Bf5 20. N4g3 Bg4 21. Ra1 Qc7 22. fg5 fg5 23. c3 Qd7 24. Qc2 Bf5 25. Nf5 Qf5 26. Qf5 Rf5 27. Ng3 Rf4 28. Rf1 Raf8 29. Ke2 Rf1 30. Rf1 Nf4 31. Kd2 Ng2 32. Rf8 Kf8 33. Nf5 Nf4 34. Nh6 Nh5 35. Ng4 Kf7 36. Ne3 Ke6 37. Nc4 Kd5 38. Ne3 Ke4 39. Nf1 Kf3 40. c4 Nf4 41. b4 Ke4 42. Ne3 Kd4 43. Nf5 Ke5 44. Ne7 Ke4 45. b5 cb5 46. cb5 g4 47. Ke1 Kf3 48. Nf5 g3 49. Ng3 Kg3 50. Kd2 Nd5 51. Kd3 b6 52. Kc4 Nc7 53. Kb4

and after a few more unrecorded moves: **White's Flag Falls.**

Long 1733 Stubberud 2066

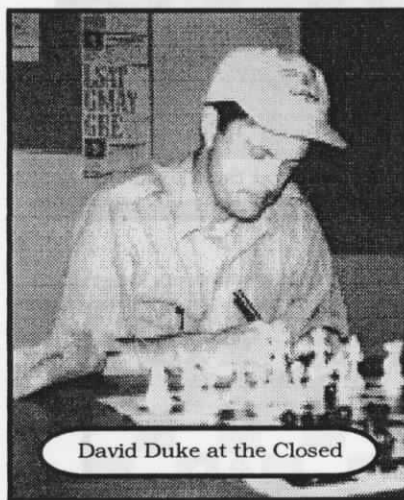
Helena Open

9/30/95

Round 3

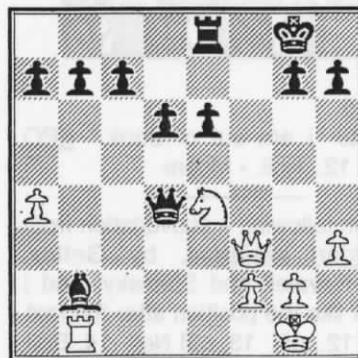
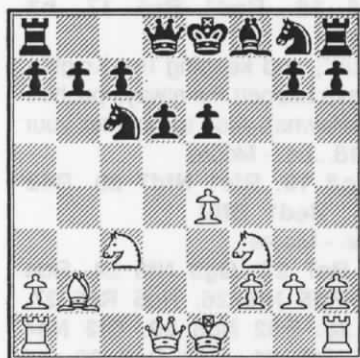
Göring Gambit

Annotations by Long and Stubberud



David Duke at the Closed

23. Rb1 Qd4



1. e4 e5 2. Nf3 Nc6 3. d4 ed4 4. c3 dc3 5. Bc4 cb2 6. Bb2 d6 7. Nc3 Be6 8. Be6 fe6

Here White has the option of playing 9. Qb3, attacking b7 and e6. This changes the game structure somewhat. - Long

9. O-O Qd7 10. a4?

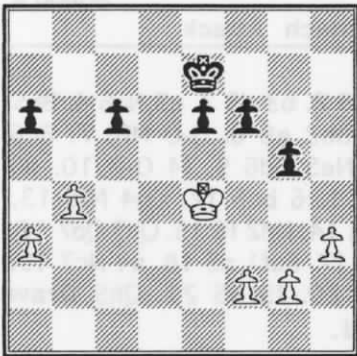
This move accomplishes very little.

- Long

10...Nf6 11. Re1 Be7 12. Qe2 O-O 13. Rad1 Ng4 14. e5 (diagram)

Hansen 1679 Kuba 1980
 Helena Open
 10/1/95 Round 5
 Smith-Morra Gambit

1. e4 c5 2. d4 cd4 3. c3 Nf6 4. e5 Nd5 5. cd4 e6 6. Nf3 Nc6 7. a3 a6 8. Bc4 Nb6 9. Bd3 d6 10. O-O de5 11. de5 Nd5 12. Qc2 h6 13. Be4 Be7 14. Rd1 Qc7 15. Nc3 Nc3 16. Qc3 Bd7 17. Be3 Rc8 18. Rac1 O-O 19. Qb3 Rfd8 20. Qb6 Qb8 21. Bc5 Bc5 22. Rc5 Be8 23. Rd8 Nd8 24. Nd4 Rc5 25. Qc5 Nc6 26. Bc6 Bc6 27. Nc6 bc6 28. b4 Qd8 29. h3 Qd1 30. Kh2 Qd5 31. Kg3 f6 32. ef6 gf6 33. Qe3 Qg5 34. Kf3 Qd5 35. Kg3 Qg5 36. Qg5 hg5 37. Kf3 Kf7 38. Ke4 Ke7



39. f4! gxf4 40. Kxf4 Kf7 41. g4 Kg6 42. h4 Kg7 43. Ke4 Kg6 44. Kd4 f5 45. gxf5 Kxf5 46. h5 Kf4 47. h6 e5+ 48. Kc5 **Black Resigns.**

Long 1733 Z. Mayer 2000
 Helena Open
 10/1/95 Round 5
 Göring Gambit

1. e4 e5 2. Nf3 Nc6 3. d4 ed4 4. c3 dc3 5. Bc4 cb2 6. Bb2 Bb4 7. Nbd2 Nf6 8. O-O d6 9. a3 Bc5 10. h3 O-O 11. Nb3 Ne4 12. Qc2 Be6 13. Nc5 Nc5 14. Rfe1 Bc4 15. Qc4 Ne6 16. Rad1 Ng5 17. Nh4 Re8 18. Nf5 Re1 19. Re1 d5 20. Qg4 g6 21. Nh6 Kf8 22. Qf4 f5 23. h4 Nf7 24. Nf7 Kf7 25. Qh6 Qg8 26. Qg5 Qd8 27. Qh6 d4 28. Qh7 Kf6 29. Bc1 Ne5 30. Bg5 Ke6 31. Bd8 Rd8 32. Qg6 **Black Resigns.**

Sherwood Moore Les Brennan
 94-95 MT Postal Championship
 Sicilian Defense
 Annotations by Moore or Les

1. e4 c5 2. Nf3 d6 3. d4 cd4 4. Nd4 Nf6 5. Nc3 a6 6. Be2 e5
 The Opocensky variation [of the Najdorf]. Most of my analysis is from King Pawn Openings, by Drazen Marovic' and Susic'. I also used BCO and Chess Life. - Moore
 7. Nb3 Be7 8. O-O O-O 9. Be3 Be6

KPO suggests 9...Qc7. BCO likes your move. - Moore

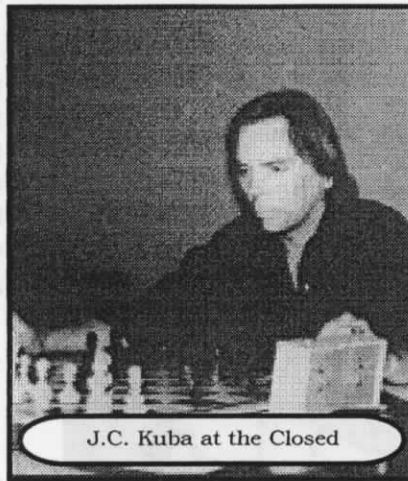
10. f4

Recommended by KPO. I played through the subvariation, and decided to try for the King side, rather than BCO's 10.a4. - Moore

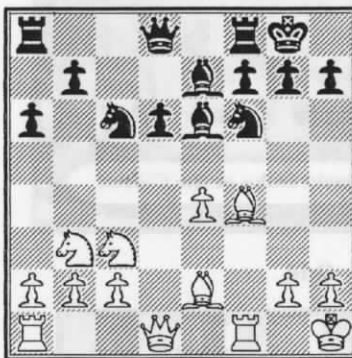
10...exf4 11. Bxf4

KPO idea. However, two days after mailing this move ... I found a game of Jim Tarjan, where he played 11. Rxf4. I liked his idea, as it lead to easier King side pressure. - Moore

11...Nc6 12. Kh1



J.C. Kuba at the Closed



12...Ne5

You wrote "I am out of book." KPO suggests 12...Rc8. - Moore

I had been following a subvariation from The Najdorf Variation, by Geller, Gligoric; Kavalek and Spassky, and I just didn't like the position after the text line, i.e. 12...d5! 13. e5! Ne4 14. Bd3 f5! 15. exf6 Bxf6 16. Qe1, etc., so I

took myself out of book. I had hoped that it might also take my opponent out of book. - Brennan

13. Nd4 Qd7

You must have found a NEW book, as you wrote "Seven more moves and I'll be out of book!" Interesting! - Moore

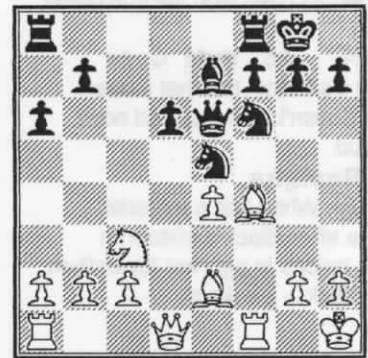
Duplicity! So starts the psychological salvos (Maybe I can fool Sherwood with some false bravado)! - Brennan

14. Nxe6

Sherwood plays the psych game well. He writes, "I think you'll find Fischer's recommendation for my next move very interesting." - Brennan

14...Qxe6

With designs on the e4 Pawn. - Brennan



15. Qd4?

(Sherwood's question mark) An error. As I told you in Big Timber, the theme in all my games is control [of] the center. Especially after reading Peter Romanovsky's Chess Middlegame Planning. "Fischer's" move, and KPO's was 15. Qe1! This leads to pressure of the King side. My move only blows a tempo. - Moore

15...Rfc8 16. Rad1 Rc5 17. h3 b5 18. a3

A little "luft", and keeping the Knights out ala Dave Leppert (he always pushed his Rook Pawns). Also to counter your threat of 18...b4. - Moore

18...Rac8 19. Rfe1 Nfd7 20. Rd2 R8c6 21. Red1 Bf6!

Nice move. - Moore

22. Qf2 Be7 23. Qg3 Nf6 24. Rd4 Ne8 25. Rd5 Nf6 26. Rc5 Rc5 27. b4 Rc6 28. Bd2 Ng6 29. Qf3 Nh4 30. Qf4 Ng6 31. Qf3 Qe5 32. a4 Nh4 33. Qe3 ba4 34. Be1 Nf5 35. Qd3 Ng3+

I offered the "if" moves 36. Qxg3 Qxg3 37. Bxg3 Rxc3, and after 38. Bd3, my opponent asks, "OK, where do you go from here? I was simply trying to find a job for my Queen throughout the game. Every shot I saw was countered. And since a Draw wins the Championship: **Draw Agreed.** - Brennan

Rayburn 1400 McCourt 1700
 UCCC 1st Fall Open
 9/7/95 Round 1
 Queen's Pawn Game

1. d4 d5 2. Nf3 e6 3. Bf4 c6 4. e3
 f5 5. Bd3 Nf6 6. h3 Be7 7. Nbd2 O-O
 8. Qe2 Ne4 9. Ne5 Qa5 10. c3 Qb6
 11. Ndf3 Nd7 12. h4 Ndf6 13. Ng5
 c5 14. Bb5 a6 15. Ba4 Qa5 16. Bb3
 Nc3 17. Qd2 cd4 18. bc3 dc3 19.
 Qc2 Ne4 20. Ne4 fe4 21. h5 Bf6 22.
 g4 Qd8 23. Qc3 Bd7 24. O-O Rc8
 25. Qb2 Bb5 26. Rfd1 Qe7 27. Rac1
 Bd3 28. Qd2 Bb5 29. a4 Bc6 30.
 Kg2 Bg5 31. Rh1 Bf6 32. Rh3 Rfd8
 33. Qe2 d4 34. ed4 Rd4 35. Nc6 bc6
 36. Qa6 e3 37. Be3 Rdd8 38. Rc6
 Rc6 39. Qc6 Rd6 40. Qc4 Qb7 41.
 Kg1 h6 42. Qc2 Rc6 43. Qa2 Qd7



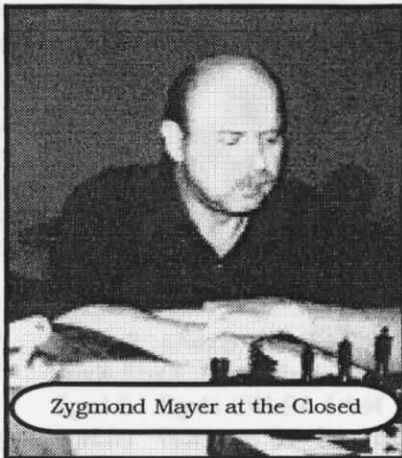
And here, White being a piece and a Pawn ahead in material, we can only assume that White is in serious time trouble, because... **Draw Agreed.**

Don Price Patrick Wolberd
 94-95 MT Postal Championship
 Queen's Gambit Declined

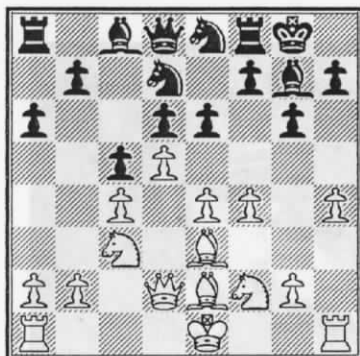
1. d4 d5 2. c4 e6 3. Nc3 Nf6 4. Bg5
 Be7 5. Nf3 O-O 6. e3 h6 7. Bf6 Bf6
 8. Rc1 dc4 9. Bc4 b6 10. O-O Nd7
 11. Re1 Bb7 12. e4 c5 13. d5 ed5
 14. ed5 Re8 15. Re8 Qe8 16. a3 Ne5
 17. Ne5 Be5 18. Qd3 a6 19. Ba2
 Bc3 20. bc3 Rd8 21. c4 Qe5 22. Bb1
 g6 23. Qd2 Kg7 24. Rd1 Bc8 25. h3
 Qg5 26. Qg5 hg5 27. Ba2 Rh8 28. d6
 Bd7 29. Bb3 Rh4 30. Rd5 g4 31. hg4
 Rg4 32. g3 Rd4 33. a4 a5 34. Kg2
 Rd5 35. cd5 f5 36. f4 Kf6 37. Kh3
 g5 38. Bc2 gf4 39. gf4 b5 40. Bb3
 c4 41. Ba2 c3 **White Resigns.**

Duke 1811 Johansson 2075
 Chinook Open
 10/14/95 Round 2
 Benoni Defense (by transposition)
 Annotations by Jan Johansson

1. c4 d6 2. d4 Nd7 3. e4 Ngf6 4.
 Nc3 g6 5. f3 Bg7 6. Nh3 c5 7. d5
 Ne5 8. Nf2 O-O 9. Be2 Ne8 10. f4
 Nd7 11. Be3 e6 12. Qd2 a6 13.
 h4!



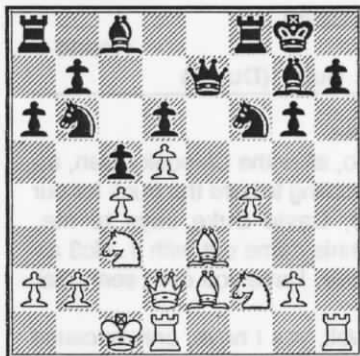
Zygmund Mayer at the Closed



13...Nb6

I considered this to be a necessary move to avoid White planting a Knight on d5 after exd5. I considered exd5 necessary to open the e file and get some counterplay. "A wing attack is best met by an attack in the center."

14. h5 ed5 15. ed5 Qe7 16. O-O-O Nf6 17. hg6 fg6



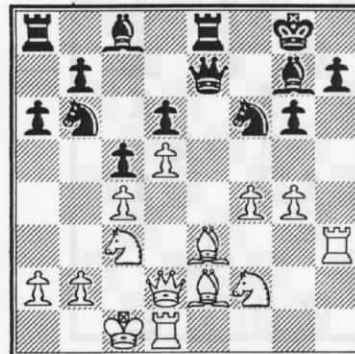
18. g4

I am not sure whether this is an error or not (my strong computer liked this move also) although David could have chosen 18. Bd3 to avoid complications.

18...Re8

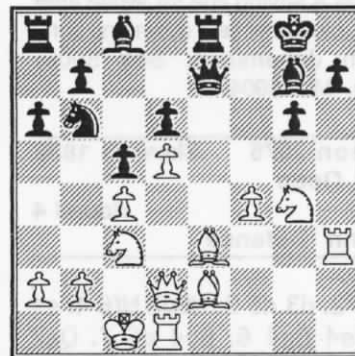
Pinpoints the weakness of Be3, and there is only one way to defend it.

19. Rh3



White is now ready to play Rg1 and f5, and Black has no counterplay, i.e. Black is cornered. No price is too high when your life is at stake. I decided to give up a piece for the initiative.

19...Nxc4!? 20. Nxc4



Suddenly I realized that 20...Bxc4 21. Bxc4 Nxc4 doesn't work because of 22. Be6+, so I had to give up one more piece.

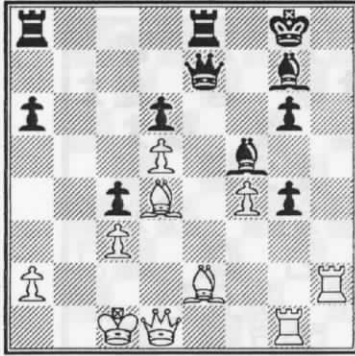
20...Nxc4!? 21. Qd3 Bf5!?

Note that 21...b5 is too slow, since White would trade off one of Black's Bishops by playing 22. Nh6+. Black keeps the initiative, but how long will it last? During the game, I had only a slight hope that it would last long enough.

22. Qxc4 b5 23. Qb3 h5 24. Rg1 c4 25. Qd1?

Makes it easy for Black. 25. Qa3 and especially 25. Qb4 are more complicated, e.g. 25. Qa3 a5 26. Nxb5 Qe4 27. Bd1 hxg4, or 25. Qb4 a5 (too slow is 25...Reb8 26. Ne5! a5 27. Nc6 Qc7 28. Nxb5) 26. Qxb5 Rab8

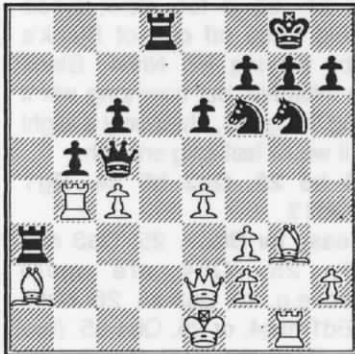
27. Qxc4 Rec8 28. Qa4 Rb4 29. Qxa5 Qe4 winning. At this point neither player had more than five minutes left.
 25...b4 26. Rh2 hg4 27. Bd4 Be3 was hanging.
 27...bxc3 28. bxc3
 (28. Bxc3 Qe3+ 29. Bd2 Bxb2+ 30. Kxb2 Rab8+)



28...Rab8! 29. Rg3 Rb1+ 30. Kd2 Rxd1+ 31. Kxd1 Bxd4 32. cxd4 Qe4 33. Rgg2 c3 34. Bxa6 Qb1 Mate!
 I think this is the most spectacular game I ever played over the board. White seems to be lost after 18. g4! If the reader finds a saving line for White after that move, please write it down and send it to Jan Johansson, Box 5000, Livingston, MT 59047.

Johansson 2075 Skovron 1839
Chinook Open
 10/15/95 Round 4
Caro-Kann Defense

1. Nf3 c6 2. d3 d5 3. Nbd2 Nf6 4. e4 de4 5. de4 Bg4 6. Bc4 e6 7. Qe2 Nbd7 8. a3 Qa5 9. Ba2 Bd6 10. b4 Qh5 11. Nc4 Be5 12. Rb1 b5 13. Nce5 Ne5 14. Rb3 Bf3 15. gf3 O-O 16. Bf4 a5 17. Rg1 Ng6 18. Bd6 Rfd8 19. Bg3 ab4 20. Rb4 Ra3 21. c4 Qc5



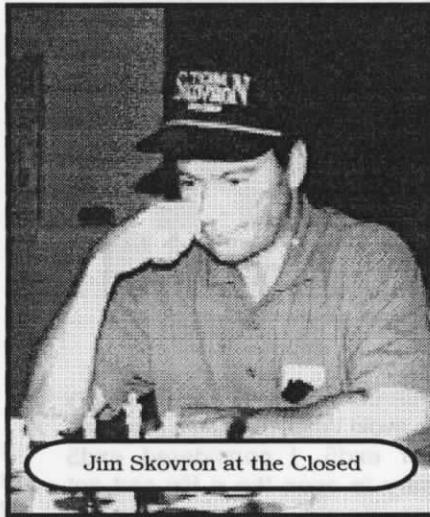
22. Qb2?? Rxa2 - **White Resigns.**

Skovron 1839 Suits 1945
Chinook Open
 10/15/95 Round 5
English Opening

1. c4 e5 2. Nc3 Nf6 3. g3 c6 4. d3 d5 5. Bg5 d4 6. Ne4??



6...Nxe4! 7. Bxd8 Bxb4+ 8. Qd2 Bxd2 9. Kd1 Nxf2+ 10. Kxd2 Kxd8 11. Bg2 Nxh1 12. Nf3 Nfg3 13. hxg3 f6 14. Rh1 g5 15. Rh6 Ke7 16. Ng1 Bf5 17. Bf3 Nd7 **White Resigns.**



Jim Skovron at the Closed

Petrak 1680 Duke 1811
Chinook Open
 10/15/95 Round 5
The Wild Bull (Dunst)

Editor's note:
 So, after the Chinook Open, as we were ambling toward the truck for our ride home, David Duke says to me, "Yeah, Dennis came out with 1. Nc3 as his first move. Have you ever seen that before?"
 Well, yes I have, only because I have known Dennis Petrak. Dennis

may be a little rusty right now, but that doesn't reflect on the respectability of his favorite opening system.
 Joel Benjamin and Eric Schiller call 1. Nc3 "The best of the non-standard opening moves" (Unorthodox Openings).

When White uses this first move, Black has to be careful that he doesn't find himself in an opening system that he doesn't want to be in, for the transpositional possibilities are numerous. White can get Black into an Alekhine's, Vienna or a BDG with a twist of the wrist, and that's how Dennis drew with Steve Smith at the Southeast Sudden Death Open in 1989, and then played to another draw with Kip Stubberud at the Turkey Open that same year, and numerous other coups.

In this particular example, Dennis didn't quite blow all the cobwebs off. Follow along as David Duke deftly takes the Bull by the horns.

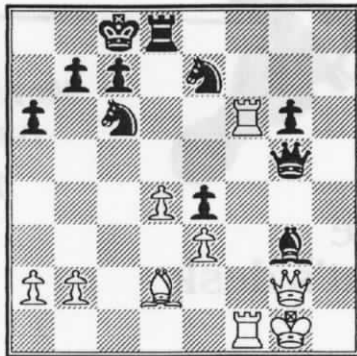
1. Nc3! Nf6 2. e4 d5 3. ed5 Nd5 4. Bb5 c6 5. Be2 Nc3 6. dc3 Qd1 7. Bd1 Bf5 8. Ne2 e5 9. O-O Bd6 10. c4 O-O 11. c3 Nd7 12. Be3 Bc5 13. Ng3 Bd3 14. Be2 Be2 15. Ne2 Be3 16. fe3 Rad8 17. b4 Nb6 18. c5 Nc4 19. e4 Nd2 20. Rf5 f6 21. Ng3 Rd3 22. Rf2 Rfd8 23. Rc1 Nc4 24. Nf5 Kf7 25. Re2 g6 26. Nd6 Nd6 27. cd6 R8d6 28. Rcc2 Ke6 29. Kf2 f5 30. a4 fe4 31. Re4 Rd2 32. Re2 Rc2 33. Rc2 Rd3 34. Ke2 e4 35. c4 Ke5 36. b5 c5 37. a5 Kd4 38. b6 a6 **White Resigns.**

Long 1729 Brennan 1800
Chinook Open
 10/15/95 Round 5
Sicilian Defense

1. e4 c5 2. Nf3 d6 3. d4 cd4 4. Nd4 Nf6 5. Nc3 a6 6. Be2 Nbd7 7. Be3 d5 8. ed5 Nb6 9. Nb3 Nbd5 10. Nd5 Qd5 11. Bf3 Qb5 12. h3 e6 13. Qd2 Bb4 14. c3 Be7 15. Nd4 Qd7 16. Rd1 Nd5 17. Qe2 Ne3 18. Qe3 Qc7 19. O-O O-O 20. Rfe1 Bc5 21. Qe4 Rb8 22. Re2 Rd8 23. Red2 Bd7 24. Qh4 Be8?? 25. Nxe6! Bf2 26. Qf2 Rd2 27. Nc7 Rf2 28. Kf2 Rc8 29. Ne8 Re8 30. Bb7 Rb8 31. Ba6 g6 32. Rd2 h5 33. b3 Kg7 34. Be2 h4 35. b4 f5 36. a4 Kf6 37. a5 Kg5 38. a6 Kf4 39. b5 g5 40. a7 Re8 41. Bf3 g4 42. a8=Q Re6 43. hg4 Re5

Long - Brennan, continued

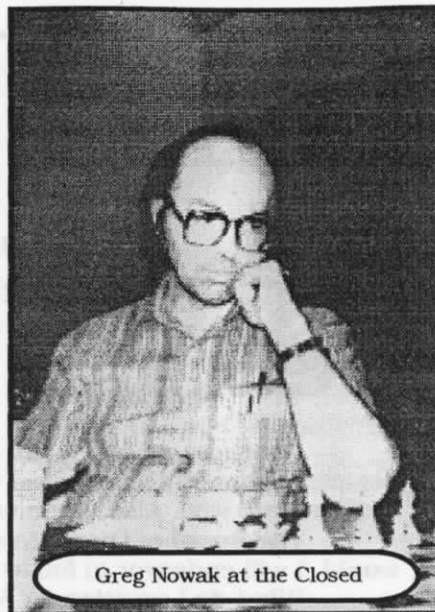
44. Qb8 h3 45. gh3 fg4 46. Rd4 Kf5
47. hg4 Kf6 48. Rf4 Ke6 49. Qb6
Kd7 50. Rf7 Ke8 51. Rh7 Kf8 52.
Qd8 Re8 53. Qf6 **Black Resigns.**



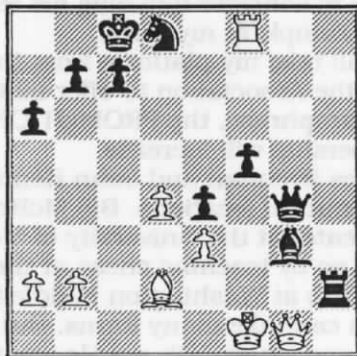
Z. Mayer 2080 Johansson 2075
Chinook Open
10/15/95 Round 5
Grob's Attack

1. g4 d5 2. h3 e5 3. Nf3 Nc6 4. d3
Be6 5. Nc3 f6 6. e3 h5 7. gh5 Rh5
8. d4 e4 9. Nd2 Bf7 10. Be2 Rh4 11.
Nf1 f5 12. Ng3 Qg5 13. Nb5 O-O-O

32...Nf5! 33. Rf7 Rh8 34. R1f5 gf5
35. Kf1 Rh2 36. Rf8 Nd8 37. Qg1
Qg4



Greg Nowak at the Closed



14. Nxf5?! Qxf5 15. Bg4 Rxf4 16.
hxg4 Qg5 17. f4 ef3 18. Qf3 Be6
19. Qg3 Qe7 20. g5 a6 21. Nc3 Bf5
22. Qf4 Qe6

38. Be1 Qe2 **Mate.**

Create beautiful chess diagrams! Linares, Hastings and Zurich TrueType™ chess fonts. Specify Windows or Macintosh. Send \$29 to: Alpine Electronics, 526 West 7th, Powell, WY 82435 **Money-back guarantee!**

Montana Chess News uses Alpine Electronics Chess Fonts

The following persons are now engaged in Montana's 1995-1996 Postal Chess Championship

- Les Brennan
- David Duke
- Michael Long
- Zygmund Mayer
- Paul Motta
- Louis Partney
- Curtis Preston
- Don Price
- Patrick Wolberd

Past Postal Champions:

- 1994-1995 - Les Brennan
- 1993-1994 - (no event)
- 1992-1993 - David Duke
- 1991-1992 - Paul Motta
- 1990-1991 - Zygmund Mayer
- 1989-1990 - Bill Lynch
- 1988-1989 - Les Brennan
- 1987-1988 - Kip Stubberud
- 1985-1987 - Kip Stubberud

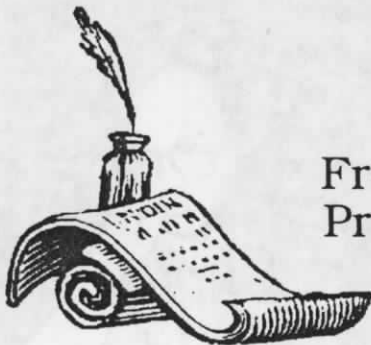


23. O-O?! (whisking the King to safety) 23...g6 24. Bd2 Bd6 25. Qf3 Nge7 26. Rae1 Bc2 27. Rf2 Be4 28. Ne4 de4 29. Qh1 Bg3 30. Rf6 Qg4 31. Qg2 Qg5 32. Ref1

Be sure to renew your membership on time. Check your mailing label.

MCA GRAND PRIX POINT STANDINGS
As of the Chinook Open 10/15/95

1. Long.....20.313
2. Stubberud..18.325
3. Duke.....17.010
4. Skovron.....9.873
5. Suits.....9.873
6. Nowak.....9.272
7. Hansen.....8.244
8. Carpenter....8.244
9. Thompson...7.885
10. Johansson.7.679



Montana Chess Association

11/1/95

From the President's desk

To All MCA Members,

For those who may not know, Dean Drake has been transferred back to Seattle. Although Dean's term was only five months, he communicated with the membership well. Also, Dean was open to new ideas.

The Board of Directors asked me to consider finishing his term. I told them I would. I will endeavor to follow Dean's example in my term.

What do I envision for MCA? I will take my platform from the MCA constitution, which states "...it being the purpose of the Association to offer instruction and training in the playing of chess", or to paraphrase, the PROMOTION of chess. The more we promote chess, the more MCA membership will increase.

So how do we promote chess? Les Brennan and John Kennedy have done so by bringing tournaments to new and beautiful locations. Bill McBroom has done so by playing speed chess in the University Center at the University of Montana during his lunch break. John Thompson has done so by teaching chess at the YMCA. Mike Jensen does so by instructing a chess club at Washington Middle School, in Missoula.

As you can see, chess promotion can take many forms. But it all takes YOU!

Now, some of you are saying to yourselves, "Oh no! He wants me to do something. I don't have time!" Yes, I do want you to do something. But you don't have to do it totally on your own. I, unfortunately, must work every other weekend. However, I will be available to assist anyone on the weekends I do have off. Listed below are a few ideas.

- 1) A speed chess exhibition in the mall on your town, handing out sample copies of Montana Chess News.
- 2) A chess simul, with MCA memberships as prizes.
- 3) Conducting inter-school challenge matches.

These are just a few suggestions, but if you have any new ideas, please pass them on to me. If MCA is to grow, we must promote chess and the Montana Chess Association.

Now, how about "I don't have time"? It doesn't have to be next month, but what are you doing in January, February or March? If you devote just one half of a day to show others the joy of chess, we could double our membership in one year. That is my goal. I'm asking for your help to achieve it. I'm willing to assist you in any way I can. All I ask is that you let me know any activity well in advance.

We have a good organization. Let's make it great!

Respectfully Yours,

Sherwood Moore

Upcoming Events

All MCA Grand Prix events will be advertised as:



AN MCA GRAND PRIX EVENT

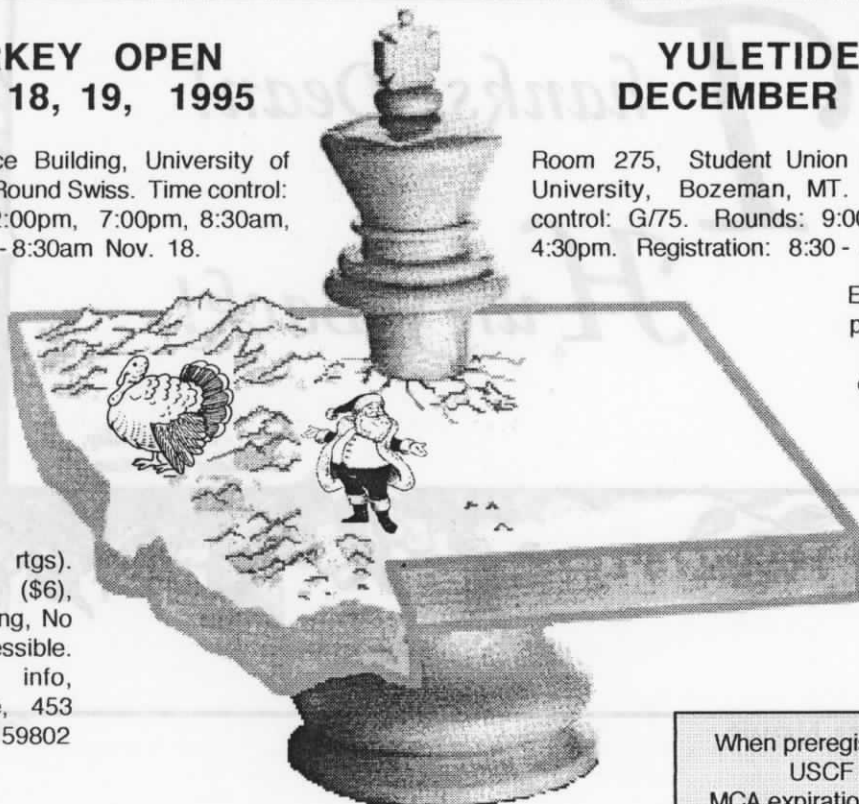


UCCC TURKEY OPEN NOVEMBER 18, 19, 1995

Room 362, Social Science Building, University of Montana, Missoula, MT. 5 Round Swiss. Time control: G/2, Rounds: 9:00am, 2:00pm, 7:00pm, 8:30am, 1:00pm. Registration: 8:00 - 8:30am Nov. 18.

EF \$15 if rec. by 11/16, \$20 at site. \$\$ G 200. 1st place \$100, 2nd place \$50, <1800 \$25, <1600 \$15, <1400 \$10, Plaque for Biggest Upset (Both players

must have nonprovisional rtgs). MCA membership required (\$6), other states OK. No smoking, No computers, Wheelchair accessible. Advance registration or info, contact: Sherwood Moore, 453 Minnesota, Missoula, MT 59802 (406) 728 - 1695



YULETIDE OPEN DECEMBER 9, 1995

Room 275, Student Union Building, Montana State University, Bozeman, MT. 4 Round Swiss. Time control: G/75. Rounds: 9:00am, 11:30am, 2:00pm, 4:30pm. Registration: 8:30 - 8:50am Dec. 9

EF \$10 if rec. by 12/7 (No phone entries) \$15 at site (juniors 1/2) Prizes: \$ per entries. MCA memb. reqd. (\$6) Other states. OK. No smoking, No

computers, Wheelchair accessible. For advance reg: University Chess Club, SUB Box 23 Bozeman, MT 59715 (406) 586-4479

When preregistering, please include USCF expiration date, MCA expiration date & current rating.

Members'

From Michael Long

The State Closed for 1995 tells a story almost without parallel in Montana Chess history. Let's take a look at [an issue involving] Michael Jensen. It was Jensen who brought up a motion to go back from the Ten-Man Closed to the Six-Man Closed, and that motion carried. If Michael Jensen (or anyone else) had made the motion for this to be retroactive to 1995 and it carried, then Michael Jensen would have stayed home instead of winning the State Closed. If Bill McBroom had not abdicated his place in the Closed, then Michael Jensen could not have played in the Ten-Man Closed.

Now, all this is history. Michael Jensen played the best tournament of his career and became the "Cinderella" Montana State Champion. Does he deserve it? Of course he does - he won!

Let's look a little further. Suppose Hans Anderson or Les Brennan or Sherwood Moore had played in the Closed and won. Would they deserve to be champion? Of course they would because they would have won.

Now let's look at Montana's chess future. Is the only point to the Montana State Championship to exclude as many players as possible and only let six little men who may not be the best players in Montana qualify? Jensen proved the absurdity of this. The real point of the Montana State Championship ought to be to get into step with the rest of the country - which is to hold bigger and better tournaments with more people qualifying - [with] greater energy and interest. If Montana wants to come out of the dark ages, it's vital to have a

contest where EVERY good man qualifies. Then the title will always go to the player who plays the best rather than to someone who managed to qualify with maybe one good performance. The answer to all this is simple - Montana needs a twenty-man Closed. This is the only way to bring Montana back into the twentieth century.

Michael Jensen convincingly proved that a player who [didn't] even qualify for a Ten-Man Closed can still be Champion. That clearly shows us we need bigger closed contests.

Send me your input.

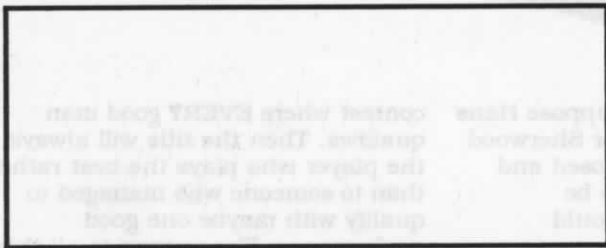
Michael Long,
Box 473, Livingston, MT 59047



Forum

Thanks, Dean!
Hurry Back!

- the membership,
Montana Chess Association



STAMP