

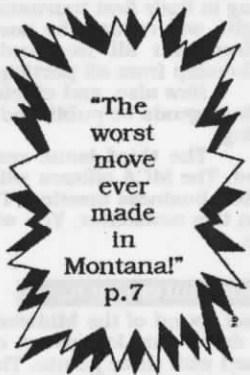


Editor - Les Brennan, P.O. Box 2404
Colstrip, MT 59323 (406) 748-2154

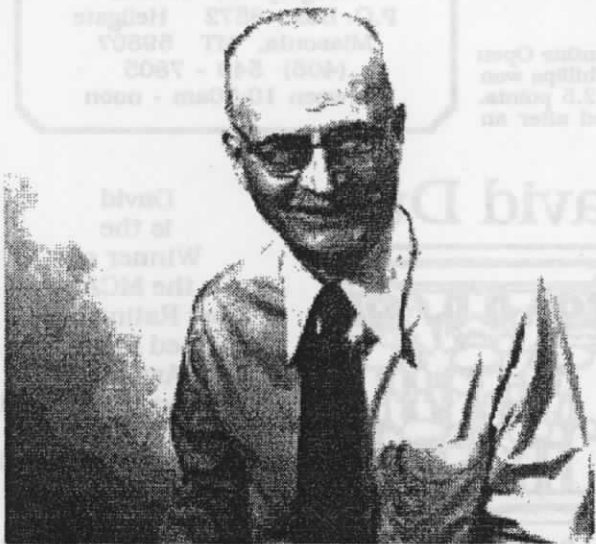
MONTANA CHESS NEWS

Montana Chess News is published by the MONTANA CHESS ASSOCIATION, an affiliate of the U. S. CHESS FEDERATION Promoting Chess Excellence by Education and Competition Membership / Subscription = \$6 / yr regular, \$3 / yr junior

- McCOURT WINS UCCC 1ST WINTER OPEN
- JOHANSSON & FABIAN TIE AT FREEZE-OUT
- J.C. KUBA WINS MIDWINTER OPEN
- JENSEN WINS UCCC 2ND WINTER OPEN
- NOWAK WINS VALENTINE OPEN



John Reid Barto



1903 - 1994

MCA membership responds with sadness and fond memories to the loss of a long-time fellow member, valued friend and benefactor. - p.14,15.

What's New

Mr. Barto Remembered:

John Barto's contributions to Montana Chess were legion, spanning several decades, including direct involvement in organizational matters by assuming official capacities, being a regular participant in competitive chess and direct largess. John Barto is among those who have held the coveted title of Montana State Chess Champion and he will always be remembered as a champion of the cause of the royal game. Dennis Petrak and Sherwood Moore write of their long-time friend. - pp. 14, 15.

50 Board Simul Slated:

Greg Nowak, aka The Octopus, will hold a simul April 1st in Missoula at McKay's on the River, and will play up to 50 boards, should fifty challengers show up. See inset.

On January 1st, Greg played a total of 84 players at Hunter Bay Coffee Roasters at an event dubbed 1st Night Missoula, scoring 84 - 0!

On January 11th, Greg played 50 boards at Hellgate Midschool, west of Missoula against all seventh-graders, scoring 50 - 0!

Greg Nowak, Montana's three-time State Chess Champion, is a master. He knows his way around the chess board and recognizes strengths and weaknesses at a glance. This is what enables him to play so many boards at the same time. Greg is Montana's best.

If there are any skeptics out there, they should sign up for the upcoming Chess Challenge and go for the prizes. There is a Simul coming up in Dillon, too. Inquire of Greg.

Changes:

On December 31, MCA's officers voted in favor of several organizational changes. One, effective immediately: New USCF Members, who are playing in their first tournament, will be allowed one year free MCA membership. This, it is thought, will reduce the cost of getting started in tournament chess. In exchange, MCA requires that all weekend tournaments advertised in MCN require current MCA membership from all participants.

New also, and officially in the bylaws, is the requirement that the MCA's business meeting agenda be published in the newsletter prior to the State Open (prior to the business meeting).

The third issue of the bylaws resolved involves when and where to hold the Montana State Closed. The MCA officers will decide the time and place and announce this information at the MCA business meeting. This is in the bylaws. A copy of the bylaws has been provided for you in this newsletter. You will periodically be provided with copies of revisions, as they are made.

Midwinter Open:

J. C. Kuba wrested First place from Jan Johansson in the last round of the Midwinter Open. A draw wouldn't have done it, and he wasn't going for a draw. Jan Johansson came in second. The Top-A trophy went to Jim Skovron, who finished with three points. The Top-B trophy went to Michael Long, who finished with three and a half points. The Top-C trophy didn't go to anybody, since there weren't any C players in attendance. The Top-D trophy went to Don Gisselbeck, who finished with two and a half points. Sonya Scarff was awarded the Top-E trophy. Ian Schnee won the Best UNR trophy (2.5 points), and Paul Arnot won the Biggest Upset Award for beating Steve Scarff in round three (an upset of 361 points, which puts Paul in the lead for the MCA Biggest-Upset-of-the-Year award, 1995!

Freeze-Out:

Unfortunately, no games were submitted from the Freeze-Out. Jan Johansson, however, who took First Place, sent in annotated score sheets from his four games. Also, Michael Long sent in his thoughts on his games with Dean Goodwin and Romie Carpenter. Their games can be found starting on page 5.

Valentine Open:

Report by Romie Carpenter. The 1995 Valentine Open had 20 participants and was won by Greg Nowak with a perfect score of 4. Bob Phillips won clear 2nd with 3 points, while Mike Jensen picked up 3rd on tie breaks with 2.5 points. Dennis Petrak won Best Under 1800 and appears to be properly reinvigorated after an extended sabbatical from the chess wars. Brad Bodie, from Spokane, won Best Under 1600, while Missoula's Ryan Cain picked off both the Best Under 1400 & Biggest Upset trophies. Congratulations Ryan! Probably the most interesting game was the last-round encounter between two Spokane-area players, Downes & Bodie, where each side had several pregnant pawns. Spokane was very well represented by a two-car contingent, and as luck would have it, the above mentioned game was the last to finish, and involved one occupant from each of those cars.

Business Agenda:

There will be one (1) more issue of *Montana Chess News* before we have our annual business meeting. Now is the time to make submissions for the topics of discussion. In the next issue, the agenda will be published. Please make your thoughts known to David Duke, 4 Wakefield Dr., Billings, MT 59102.

Rating Gains:

Many thanks to Sherwood Moore for going over the records and determining who's who in the rating department for the second year! After Duke, Eriel Mayer gets honorable mention for gaining 166 points & Romie Carpenter, 113 pts.

CHESS CHALLENGE

!!!!!!!!!!!!!!

Gregory Nowak,
Montana's State
Chess Champion,
challenges
YOU

to participate in a
50 board simul!
April 1st, 1995
at
McKay's on the River
1111 E. Broadway
Missoula at 1:00pm

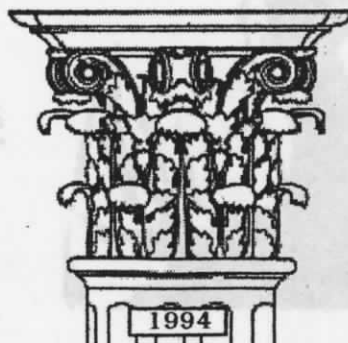
Prizes: \$20 gift certificates to
area better restaurants for wins
\$10 certificates for draws
- plus door prizes -
Early bird EF \$7, \$10 at door
(Kids \$3, \$6/door)

Please bring own chess set.

Contact:

Gregory W. Nowak
P.O. Box 8572 Hellgate
Missoula, MT 59807
(406) 549 - 7805
between 10:00am - noon

David Duke



David
is the
Winner of
the MCA
"Most Rating Points
Gained In 1994"
Award.
Based on the annual
USCF rating lists,
David's rating jumped
from 1607 (1993)
to 1805 (1994),
a gain of 198 points!

UCCC 1ST WINTER OPEN 12/15,22,29/94

	NAME	RTG	R1	R2	R3	TOT
1	Dan McCourt	1758	W 8	W 6	W 5	3
2	William McBroom	1653	W 9	D 5	D 6	2
3	Donald Tillotson	1450	L 7	W10	W 9	2
4	Emmet Goforth	1054	L 6	W 8	W10	2
5	Sherwood Moore	1685	W11	D 2	L 1	1.5
6	John Rayburn	1609	W 4	L 1	D 2	1.5
7	Romie Carpenter	1916	W 3	U--	U--	1
8	Dale M. Gross	1215	L 1	L 4	W11	1
9	Tony Randolph	1107	L 2	W11	L 3	1
10	Donald Gisselbeck	1388	BYE	L 3	L 4	0.5
11	Ryan Cain	1211	L 5	L 9	L 8	0

FIVE-VALLEYS FREEZE-OUT 1/14,15/95

	NAME	RTG	1	2	3	4	TOT
1	Johansson	2113	W15	W26	D 2	W 3	3.5
2	Fabian	1730	W24	W18	D 1	W 8	3.5
3	Long	1700	W23	W 5	W 4	L 1	3
4	Carpenter	1913	W20	W14	L 3	W 9	3
5	Bodie	1539	W 6	L 3	W25	W19	3
6	Shughart	1838	L 5	W23	W14	W16	3
7	Rajala	1553	L 8	W22	X26	W13	3
8	Skovron	1839	W 7	D 9	W13	L 2	2.5
9	Fewel	1696	W10	D 8	W17	L 4	2.5
10	Amundson	1152	L 9	D15	W21	W18	2.5
11	Erickson	1732	D19	W27	D16	D12	2.5
12	D. McCourt	1758	W21	L13	W20	D11	2.5
13	Moore	1685	W22	W12	L 8	L 7	2
14	Yunker	1655	W17	L 4	L 6	W22	2
15	McBroom	1653	L 1	D10	D18	W24	2
16	Shuck	1698	D27	W19	D11	L 6	2
17	Jensen	1996	L14	W21	L 9	W20	2
18	Bye	UNR	W25	L 2	D15	L10	1.5
19	Kirilin	1354	D11	L16	W27	L 5	1.5
20	Rayburn	1609	L 4	X28	L12	L17	1
21	Tillotson	1450	L12	L17	L10	W27	1
22	Goforth	1054	L13	L 7	BYE	L14	1
23	Goodwin	1322	L 3	L 6	L24	BYE	1
24	Cain	1211	L 2	L25	W23	L15	1
25	Mostad	1682	L18	W24	L 5	U--	1
26	Anderson	1694	W28	L 1	F 7	U--	1
27	Griffin	1170	D16	L11	L19	L21	0.5
28	Randolph	1107	L26	F20	U--	U--	0

UCCC 2ND WINTER OPEN 1/12,19,26/95

	NAME	RTG	R1	R2	R3	TOT
1	J. Michael Jensen	1996	W 4	W 3	W 6	3
2	Romie Carpenter	1913	D 5	L 4	BYE	1.5
3	Daniel J. McCourt	1758	W 6	L 1	D 4	1.5

4	Sherwood Moore	1685	L 1	W 2	D 3	1.5	
5	William McBroom	1653	D 2	L 6	BYE	1.5	
6	John Rayburn	1609	L 3	W 5	L 1	1	
(reserve) NAME	RTG	1	2	3	4	TOT	
1	D. Tillotson	1450	X	W	X	W	3
2	R. Cain	1211	L	X	W	F	1
3	T. Randolph	1107	F	L	X	X	1
4	E. Goforth	1054	L	F	F	X	0

MIDWINTER OPEN 2/4,5/95

	NAME	RTG	R1	R2	R3	R4	R5	TOT
1	Kuba	1904	W10	W 4	D 3	W 6	W 2	4.5
2	Johansson	2117	W12	W 8	W 6	W 3	L 1	4
3	Z. Mayer	2046	W 7	W 5	D 1	L 2	W 9	3.5
4	Long	1700	W13	L 1	W 9	D 5	W 7	3.5
5	Brennan	1700	W18	L 3	W11	D 4	W 8	3.5
6	Skovron	1839	W11	W16	L 2	L 1	W13	3
7	Gisselbeck	1388	L 3	W14	BYE	W12	L 4	2.5
8	Carpenter	1800	W14	L 2	BYE	W13	L 5	2.5
9	Schnee	UNR	D17	W10	L 4	W16	L 3	2.5
10	Godinez	1383	L 1	L 9	W18	W14	D11	2.5
11	E. Mayer	1382	L 6	W18	L 5	W17	D10	2.5
12	Shuck	1632	L 2	W17	BYE	L 7	W16	2.5
13	Arnot	1292	L 4	W15	W16	L 8	L 6	2
14	Price	1348	L 8	L 7	W15	L10	W18	2
15	Fitzpatrick	UNR	L16	L13	L14	W18	W17	2
16	Steve Scarff	1653	W15	L 6	L13	L 9	L12	1
17	McBroom	1698	D 9	L12	BYE	L11	L15	1
18	Sonya Scarff	1084	L 5	L11	L10	L15	L14	0

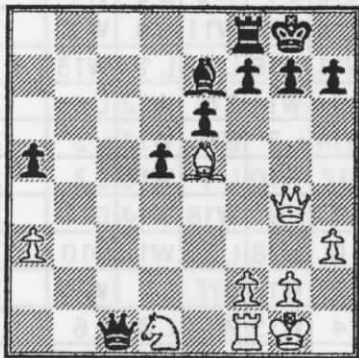
VALENTINE OPEN 2/18,19/95

	NAME	RTG	1	2	3	4	TOT
1	Nowak	2200	W12	W 6	W 2	W 3	4
2	Phillips	1853	W14	W 8	L 1	W 7	3
3	Jensen	2009	W 9	W 5	D 7	L 1	2.5
4	Carpenter	1800	W15	L 7	W12	D 6	2.5
5	Downes	1800	X20	L 3	D 8	W13	2.5
6	Fabian	1730	W10	L 1	W14	D 4	2.5
7	Petrak	1666	W17	W 4	D 3	L 2	2.5
8	McBroom	1698	W16	L 2	D 5	D18	2
9	Shuck	1632	L 3	L13	W15	W16	2
10	Cain	1212	L 6	L12	W17	W14	2
11	Erickson	1714	W13	U--	U--	D12	1.5
12	G. Yunker	1653	L 1	W10	L 4	D11	1.5
13	Bodie	1539	L11	W 9	D18	L 5	1.5
14	Rajala	1535	L 2	W16	L 6	L10	1
15	Rayburn	1489	L 4	W17	L 9	U--	1
16	Griffin	1195	L 8	L14	W19	L 9	1
17	J. Yunker	1097	L 7	L15	L10	W19	1
18	D. McCourt	1770	U--	U--	D13	D 8	1
19	C. McCourt	1159	U--	U--	L16	L17	0
20	Tillotson	UNR	F 5	U--	U--	U--	0

Recent Games

Rayburn 1609 Goforth 1054
UCCC 1st Winter Open
12/15/94 Round 1
London System

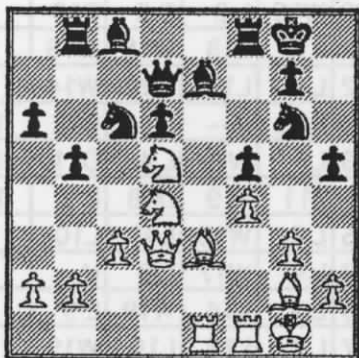
1. d4 d5 2. Bf4 Bg4 3. h3 Bf5 4. e3
 Nf6 5. Nf3 Nbd7 6. Bd3 Bd3 7. cd3
 c6 8. O-O e6 9. Nc3 b5 10. Rc1 Be7
 11. e4 Nh5 12. Bh2 O-O 13. Ne5
 Ne5 14. Qh5 Nd3 15. Rb1 Qb6 16.
 ed5 cd5 17. a3 Qd4 18. Rbd1 a5 19.
 Nb5 Qc4 20. Nc3 Rab8 21. Bb8 Nb2
 22. Be5 Nd1 23. Nd1 Qc1 24. Qg4



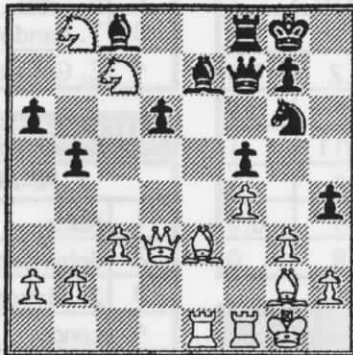
24...Qxa3? 25. Qxg7 Mate

D. McCourt 1758 Rayburn 1609
UCCC 1st Winter Open
12/22/94 Round 2
Sicilian Defense

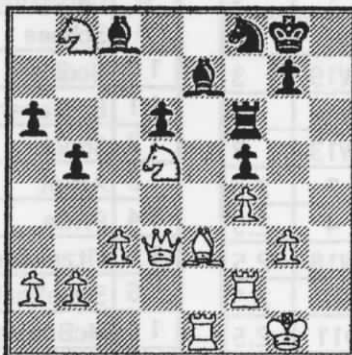
1. e4 c5 2. f4 e6 3. Qe2 Nc6 4. c3
 Nge7 5. Nf3 d6 6. Na3 Ng6 7. d3
 Be7 8. Bd2 a6 9. Nc2 Qc7 10. g3 O-
 O 11. Ne3 Rb8 12. Bg2 b5 13. O-O
 f5 14. ef5 ef5 15. Nd5 Qa7 16.
 Rae1 c4 17. Be3 cd3 18. Qd3 Qd7
 19. Nd4 h5?



20. Nxc6 h4 21. Nxb8 Qe8 22. Nc7
 Qf7?



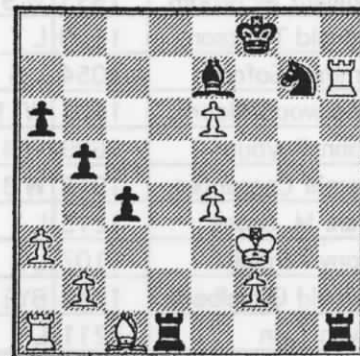
23. Bd5 hxg3 24. Bxf7+ Rxf7 25.
 hxg3 Rf6 26. Rf2 Nf8 27. Nd5 Rh6?



28. Nxe7+ Kh7 29. Nxf5 Black
 resigns.

Goforth 1054 Gisselbeck 1388
UCCC 1st Winter Open
12/29/94 Round 3
Colle System

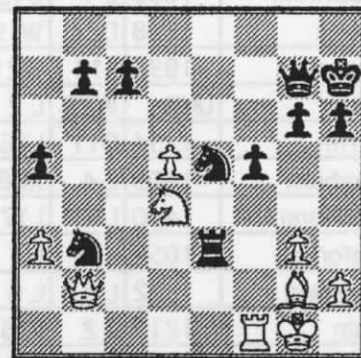
1. d4 d5 2. e3 Nf6 3. Nd2 e6 4. a3
 Be7 5. Bd3 O-O 6. c4 dc4 7. Nc4
 Nc6 8. Nf3 a6 9. h3 b5 10. Nce5
 Bb7 11. Qc2 Ne5 12. de5 Ne8 13.
 Bh7 Kh8 14. Bd3 Qd7 15. Qe2 Rd8
 16. Bc2 g6 17. h4 Kg7 18. Bg6 fg6
 19. Ng5 Rh8 20. Qg4 Qd5 21. Qf3
 Qf3 22. Nf3 Bf3 23. gf3 Rh4 24.
 Rg1 c5 25. e4 c4 26. f4 Kh6?? 27.
 f5+ Kg7 28. Rxg6+ Kh7 29. Rxe6
 Rh1+ 30. Ke2 Bh4 31. f6 Kg6 32.
 f7 Kxf7 33. Rh6 Ng7 34. Rh7 Rdd1
 35. Kf3 Be7 36. e6+ Kf8



37. Bh6! Rxh6 38. Rxh6 Rxa1?
 39. Rh8 Mate.

Moore 1685 D. McCourt 1758
UCCC 1st Winter Open
12/29/94 Round 3
Dutch Defense

1. Nf3 f5 2. b3 Nf6 3. Bb2 g6 4. c4
 Bg7 5. d4 d6 6. g3 O-O 7. Bg2 a5 8.
 Nc3 Nc6 9. O-O h6 10. a3 Kh7 11.
 Qc2 e5 12. de5 de5 13. Rad1 Qe7
 14. e3 Qf7 15. Nd5 Ne4 16. Nd2 Nc5
 17. Nf3 Be6 18. Ne1 Rfd8 19. Nc3
 e4 20. f3 Rd1 21. Nd1 ef3 22. Nf3
 Rd8 23. Bg7 Qg7 24. Nc3 Rd3 25.
 Nd5 Bd5 26. cd5 Rc3 27. Qd2 Nb3
 28. Qb2 Ne5 29. Nd4 Re3



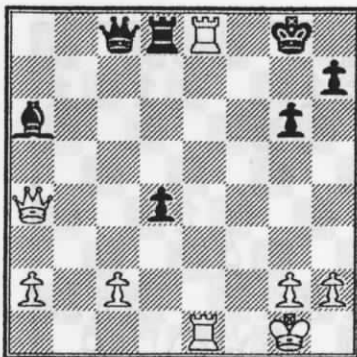
30. Ne6? Nf3+ White Resigns.

Moore 1685 Jensen 1996
UCCC 2nd Winter Open
1/12/95 Round 1
Modern Defense

1. d4 g6 2. e4 Bg7 3. Nf3 c6 4. Be3
 Qb6 5. Qc1 d5 6. e5 Bg4 7. Nbd2

Moore - Jensen cont.

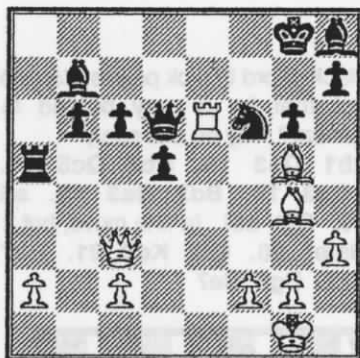
7...Nh6 8. h3 Bf3 9. Nf3 Nf5 10. Rb1 Ne3 11. Qe3 Qa5 12. Nd2 Qa2 13. Bd3 Qa5 14. O-O e6 15. Ra1 Qb4 16. Rfb1 O-O 17. h4 Qe7 18. Qh3 c5 19. c3 Nc6 20. Nf3 cd4 21. cd4 Nb4 22. Ra3 Nd3 23. Rd3 h6 24. g4 Rfc8 25. Rc3 Qb4 26. Qf1 Rc3 27. bc3 Qc3 28. Kg2 Qc7 29. Rb5 Bf8 30. Qb1 b6 31. Rb2 Rc8 32. Qa2 a5 33. Ne1 Bb4 34. Rc2 Qb7 35. Rc8 Qc8 36. Nf3 Qc4 37. Qb1 b5 38. Qd1 a4 39. Nh2 a3 40. Nf1 a2 41. Ne3 Qc3 42. Nc2 Qd2 43. Qd2 Bd2 44. Kf1 Bc3 White resigns



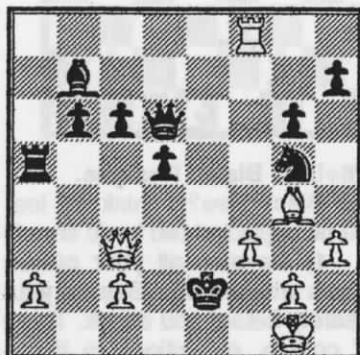
29...Kg7 30. Rxd8 Black Resigns

Moore 1685 Carpenter 1913
UCCC 2nd Winter Open
1/19/95 Round 2
Modern Defense

1. Nf3 g6 2. e4 Bg7 3. d4 c6 4. Nc3 d5 5. e5 f6 6. Bf4 Nh6 7. h3 O-O 8. Qd2 Nf7 9. Be2 fe5 10. Ne5 Nd7 11. Nf7 Rf7 12. Be3 e5 13. O-O b6 14. Rab1 Bb7 15. b4 Qc7 16. Rfc1 a5 17. ba5 Ra5 18. Bg4 Re7 19. Bh6 Bh8 20. Re1 Nf6 21. Bg5 ed4 22. Re7 Qe7 23. Re1 Qd6 24. Re6 dc3 25. Qc3



25...Ne4 26. Re8+ Kf7 27. Qxh8 Nxf5 28. Qg8+ Kf6 29. Rf8+ Ke5 30. Qg7+ Ke4 31. f3+ Ke3 32. Qc3+ Ke2



Carpenter 1913 McBroom 1658
UCCC 2nd Winter Open
1/12/95 Round 1
English Opening

1. c4 Nf6 2. g3 g6 3. Bg2 Bg7 4. Nc3 d6 5. e4 c5 6. Nge2 Nc6 7. O-O O-O 8. d3 Rb8 9. h3 b6 10. f4 Bb7 11. g4 Ne8 12. Ng3 Nc7 13. Be3 Ne6 14. Qd2 Ned4 15. Rad1 a6 16. Nce2 b5 17. Nd4 Nd4 18. Ne2 Ne2 19. Qe2 Qc7 20. cb5 ab5 21. d4 Bd4 22. Bd4 cd4 23. e5 Qb6 24. Bb7 Rb7 25. Rd3 de5 26. Qe5 Rd8 27. f5 Qd6 28. Qe4 Qd5 29. Re1 Qe4 30. Re4 Rbd7 31. fg6 hg6 32. Kf2 Rd5 33. Ke2 R8d7 34. Rb3 f6 35. Re6 Kf7 36. Rb6 Re5 37. Kd2 Rdd5 38. Rb7 d3 39. Rd3 Rd3 40. Kd3 Rd5 41. Kc3 Ke6 Draw Agreed.

Jensen 1996 D. McCourt 1758
UCCC 2nd Winter Open
1/19/95 Round 2
Dutch Defense

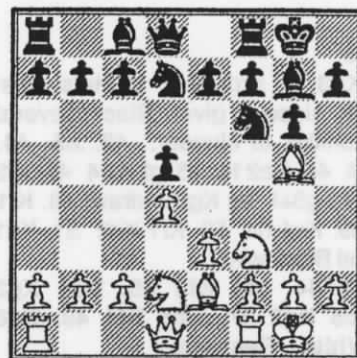
1. d4 f5 2. Nc3 Nf6 3. Bg5 d5 4. e3 c6 5. Bd3 Ne4 6. Bh4 Qa5 7. Ne2 g6 8. O-O Bg7 9. f3 Nc3 10. bc3 O-O 11. Be7 Re8 12. Bb4 Qc7 13. Qd2 a5 14. Ba3 b5 15. Rae1 Nd7 16. Ng3 Nf6 17. e4 fe4 18. fe4 b4 19. cb4 de4 20. Ne4 Ne4 21. Be4 Ba6 22. Rf3 Rad8 23. Bb2 ab4 24. Qb4 c5 25. Qa4 Qc8 26. Rfe3 Re4 27. Re4 Bd4 28. Bd4 cd4 29. Re8+

33. f4+ Nf3+ 34. Bxf3 Mate

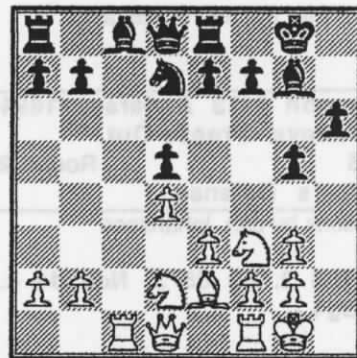
McBroom 1653 Johansson 2113
Five-Valleys Freeze-Out
1/14/95 Round 1
Torre Attack

Annotations by Jan Johansson

1. d4 Nf6 2. Nf3 g6 3. Bg5 Bg7 4. Nbd2 d5 5. e3 O-O 6. Be2 Nbd7 7. O-O



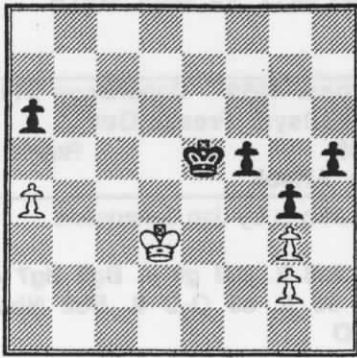
7...Re8?! (7...c5) 8. c4 c6 9. Rc1 h6 10. Bh4 g5 11. Bg3 Nh5 12. cd5 Ng3 13. hg3 cd5



14. Nh2?

(Too passive and gives Black the break he needs to play e7-e5. After 14. Qb3! e5 Black loses a pawn without compensation.)

14...e5 15. de5 Ne5 16. Nb3 Nc6 17. Qd2 Be6 18. Nc5 Qe7 19. Ne6 Qe6 20. Rc2 a6 21. Rfc1 d4! 22. Bf3 de3 23. Qe3 Qe3 24. fe3 Re3 25. Ng4 Re6 26. Bc6 bc6 27. Rc6 Rae8 28. Rc8 Rc8 29. Rc8 Kh7 30. Rc7 Kg6 31. Rb7 Bd4 32. Kf1 h5 33. Nh2 g4! (White's game suffers much from his misplaced N) 34. Rb8 Rf6 35. Ke2 Rf2 36. Kd3 Rb2 37. Rb2 Bb2 38. Nf1 Bc1! 39. a4 Kf5 40. Ne3 Be3 41. Ke3 Ke5 42. Kd3 f5 (diagram)



43. a5

(43. Ke3 is probably White's best chance, since it gives Black several opportunities to blunder: 43...a5 44. Kf2 Kf4 45. Ke2 f4 46. gf Kxf4 47. Kf2 g3+ [h4? g3+! hg Kg2 = draw] 48. Kf1 Ke3 49. Ke1 h4 50. Kf1 Kd2 51. Kg1 Kc3 and Black wins)

43...f4 44. gf4 Kf4 45. Kc4 Kg3 46. Kc5 Kg2 47. Kb6 Kf1 48. Ka6 g3 White Resigns.

Why did White lose? I think he lost because of 14. Nh2? This move is an error for two reasons. 1) It is too passive. The active 14. Qb3 was necessary. 2) The N sits on h2 practically for the rest of the game.

Johansson 2113 Andersson1694
Five-Valleys Freeze-Out
 1/14/95 Round 2
Alekhine's Defense
 annotations by Jan Johansson

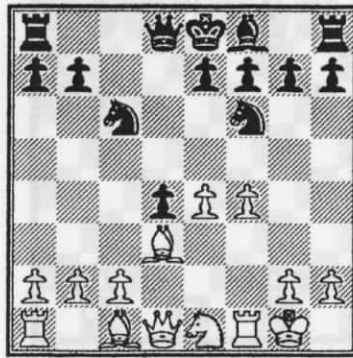
1. e4 Nf6 2. d3 d5 3. Nd2 d4 4. Nf3 Bg4



5. Be2 Bxf3 6. Nxf3 c5 7. O-O Nc6 8. Ne1 c4?!

(Premature! Develop your pieces first!)

9. f4 cd3 10. Bd3



10...Qb6!

(Black has a good sense for tactics)

11. a3 e5 12. Kh1 ef4 13. Bf4



13...Qb2?

(Can Black afford to pick pawns, despite the fact that he is way behind in development? Play on and see!)

14. Rb1 Qa3 15. Rb7 Qc5 16. Rb5! Qc3 17. Bd2 Qa3 18. e5 Nd7 19. Qf3 a6! (a fine move, but it is too late) 20. Qf7 Kd8 21. Rb7 Nde5 22. Bg5 Be7



23. Qf8+! Black Resigns.

Why did Black lose? I think he lost because he neglected two basic laws in chess: 1) Develop all your pieces before you attack. 2) See to your King's safety before you attack. There are, of course, exceptions to these

rules, which make chess so interesting. One is: Strike immediately if you can cause the enemy some harm. But be sure that it causes enough harm, preferably crippling him. Otherwise he will soon strike back and crush you!

I think that if Hans Andersson seriously takes up the study of chess strategy, he can soon be one of the strongest players in Montana. When it comes to pure tactics, he is already good indeed.

Fabian 1730 Johansson 2113
Five-Valleys Freeze-Out
 1/15/95 Round 3
French Defense
 Annotations by Jan Johansson

1. e4 e6 2. d4 d5 3. Nd2 Nf6 4. e5 Nfd7 5. f4 c5 6. c3 cd4 7. cd4 Nc6 8. Ndf3 Qb6 9. g3 Bb4 10. Kf2



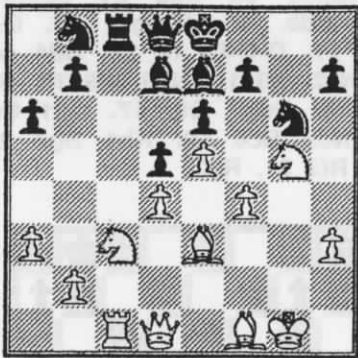
10...g5!? (This far all in the book)

11. Ne2 (The book suggests 11. Be3 or 11. h3) 11...Be7 12. h3 gf4 13. gf4 Rg8 14. Rg1 Rg1 15. Kg1 Nf8 16. Nc3

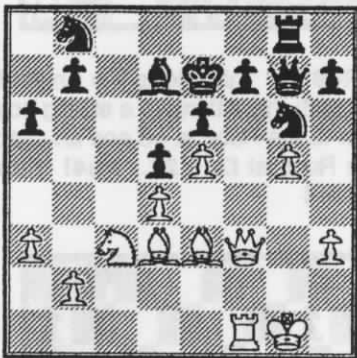


16...Ng6 (16...Bd7) 17. Na4 Qd8 18. Be3 Bd7 19. Rc1 Rc8 20. a3 Nb8 21. Nc3 a6 22. Ng5 (diagram)

Fabian - Johansson cont.



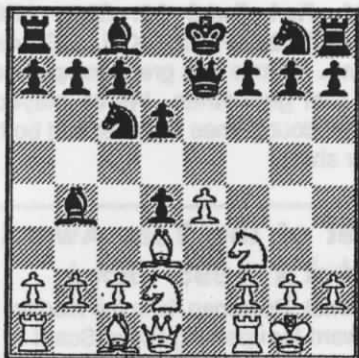
22...Bxg5?
 (22...h3 23. Nh7 Nf8 24. Nxf8 Bxf8)
 23. fxg5 Ke7 24. Qf3 Qh8 25. Bd3
 Rg8 26. Rf1 Qg7



27. Nxd5! exd5 28. Qxd5 Nc6
 29. Bc4 Nh8 30. Qd6+ Ke8 31.
 Rf6 Qf8 (Black offered a draw and
 White accepted) Draw Agreed.

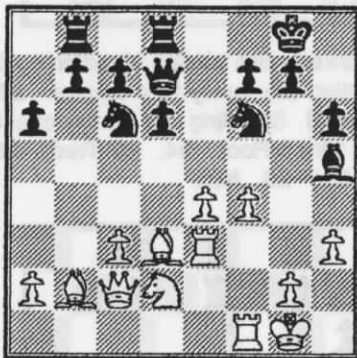
Johansson 2113 Long 1700
 Five-Valleys Freeze-Out
 1/15/95 Round 4
 Relfson's Gambit
 Annotations by Jan Johansson

1. e4 e5 2. d4 ed4 3. Nf3 Bb4 4.
 Nbd2 Qe7 5. Bd3 Nc6 6. O-O d6

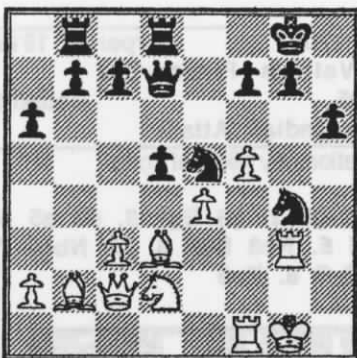


This position we reached already one year ago at the Groundhog Action Open in Bozeman, where I continued 7. e5 de 8. Nxe5? After that game, I found an interesting continuation that I decided to save for Michael if he would ever play the same line again.

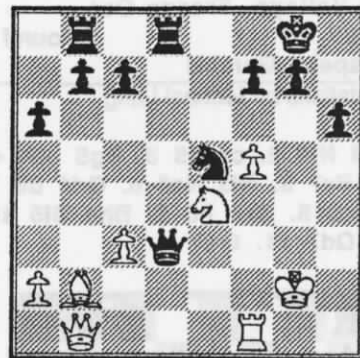
7. Nxd4 Nxd4 8. c3 Bxc3
 (Note a little trap: 8...Bc5? 9. cd Bxd4 10. Qa4+
 9. bxc3 Nc6 10. f4 Nf6 11. Ba3 Bg4 12. Qb3 Qd7 13. Rab1 Rb8 14. Rbe1 O-O 15. Qc2 Rfd8 16. Re3 h6 17. Bb2 a6 18. h3 Bh5



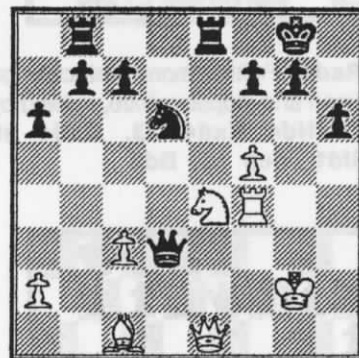
19. f5?!
 White has excellent compensation for the pawn and a solid continuation would now have been 19. a3 followed by c4 and Rg3, intensifying the pressure on Black's King side. 19. f5 gives Black counterplay.
 19...Ne5 20. g4 Bg4 21. hg4 Nfg4 22. Rg3 d5



23. Rg2??
 (23. Be2 with advantage for White)
 Ne3!
 (Forking all White's heavy artillery)
 24. Qb1 Nxe2 25. Kxe2 dxe4 26. Nxe4 (26. Bxe4 Qxe2+ 27. Kh1 Qg5 followed by Re2 is worse)
 26...Qxd3 (diagram)



27. Qe1 (As long as the Queens are on the board, there is hope) 27...Re8 (More effective and forcing is 27...Qc2+ 28. Rf2 Ne3!)
 28. Rf4 Nc4 (Still 28...Qc2+ wins at least the Bishop)
 29. Bc1 Nd6



30. Nf6+
 (A couple of checks and then I give up, I thought)
 30...gxf6 31. Rg4+
 (Michael grabbed his King and it didn't really look like it did matter where he dropped it...)
 31...Kf8??
 [Editor's note: Michael Long wrote in to give his own comment on this move, calling it "Easily the worst move ever made in Montana!" I'll bet that if every reader were to send in the worst moves they have ever made, we would find many more examples of at least equal pulchritude.]

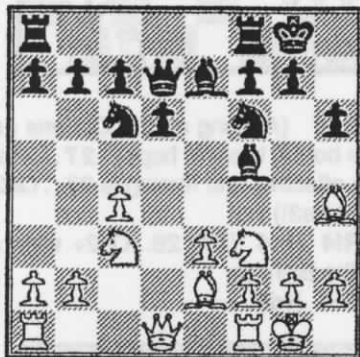
Jan comments, "31...Kh7 or Kh8 easily wins for Black."

Michael Long notes, "Correct is: 31...Kh7 32. Qh4 Re2+ 33. Kh1 Qf3+ 34. Kg1 Re1+!! 35. Qxe1 Qxg4+ and the win is effortless for Black.

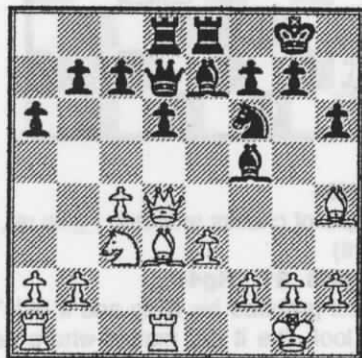
32. Bh6 Mate.

Goodwin 1322 Long 1700
 Five-Valleys Freeze-Out
 1/14/95 Round 1
 Budapest Gambit
 Annotations by Michael Long

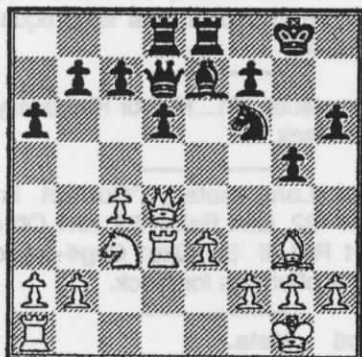
1. d4 Nf6 2. c4 e5 3. Bg5 ed4 4. Qd4 Be7 5. Nf3 Nc6 6. Qd1 d6 7. e3 O-O 8. Be2 h6 9. Bh4 Bf5 10. Nc3 Qd7 11. O-O



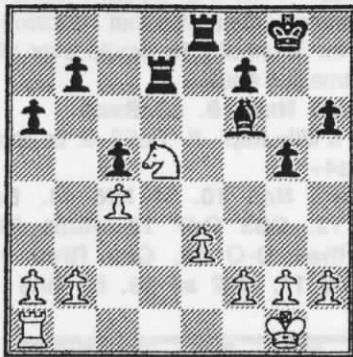
11...Rad8 Putting more protection on the Queen and stopping Bxf6, followed by c5. 12. Nd4 Nxd4 13. Qxd4 a6 14. Rfd1 Rfe8 15. Bd3



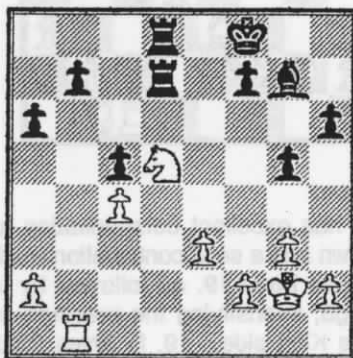
15...Bxd3 16. Rxd3?? This move loses because the Queen at d4 has only two squares it can go to. They will now be removed with a one-two punch. 16...g5! 17. Bg3



17...c5! 18. Qxc5 dxc5 19. Rxd7 Rxd7 20. Be5 Bd8 21. Bxf6 Bxf6 22. Nd5



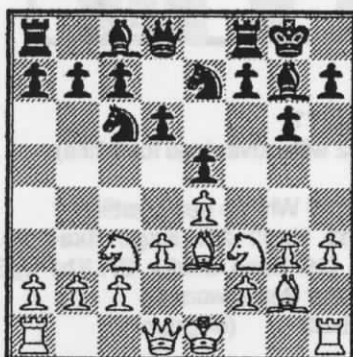
22...Bxb2 Still holding f6, which could be called the family fork square. 23. Rd1 Kf8 Stopping the tempo check, which wins a Rook. 24. g3 Red8 25. Rb1 Ba7 26. Ka2



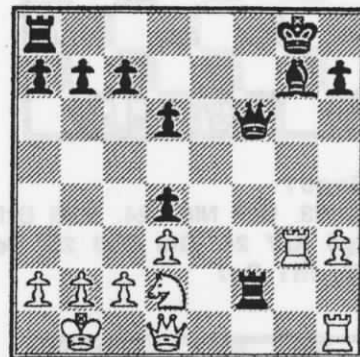
26...b5! Bye-bye Knight post. 27. Nb6 Rd6 28. Nd5 bc4 29. Nb6 c3 30. Nc4 Rd1 White Resigns.

Long 1700 Carpenter 1913
 Five-Valleys Freeze-Out
 1/15/95 Round 3
 King's Indian Attack
 Annotations by Michael Long

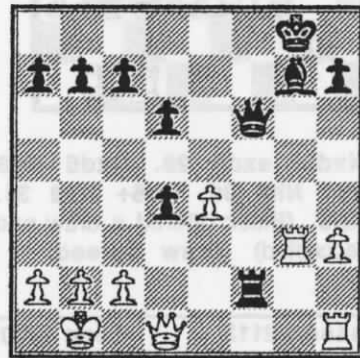
1. Nf3 g6 2. g3 Bg7 3. d3 e5 4. e4 d6 5. Nc3 Ne7 6. h3 Nbc6 7. Bg2 O-O 8. Be3



8...f5? This move opens Black's Kingside prematurely. White will capitalize on this by castling Queenside. 9. ef5 gf5 10. Qd2 Nd4 11. O-O-O! f4 12. Bd4 ed4 13. Ne2 fg3 14. Ng3 Nf5 15. Nf5 Rf5 16. Rdg1 Qf6 17. Qd1 Bd7 18. Nd2 Bc6 19. Kb1 Bg2 20. Rg2 Rf2 21. Rg3



21...Re8? This allows the Knight to accomplish three things - a strong post, a block to the Rook at e8 and an attack on the Rook at f2. 22. Ne4! Rxe4 23. dxe4



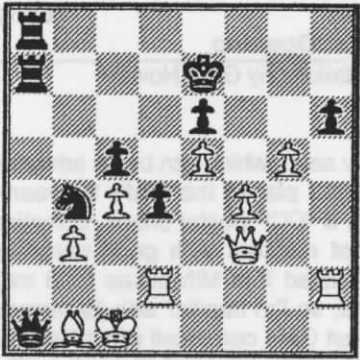
23...d3! A quality move by Romie. The Pawn can't be taken, or there's a devastating check at b2. It can't be left alone either because Rook takes Pawn. 24. c3 Qf4 25. Rxd3 Qe5 26. Qe1 Qb5 27. Qxf2 Qxd3 28. Qc2 Qf3 29. Rg1 Qxh3 30. Qb3+ Kf8 31. Qxb7 Qd3+ 32. Ka1 Black Resigns. Romie is a great competitor and a real gentleman. We've played some standout games together and both won our share.

Upset of the Year Award
 ★★★ 1995 ★★★

Paul Arnot, Bozeman, is in the lead for this award for upsetting Steve Scarff at the Midwinter Open, an upset of 361 pts!

Scarff 1653 **Skovron 1839**
Midwinter Open
2/4/95 **Round 2**
Caro-Kann Defense

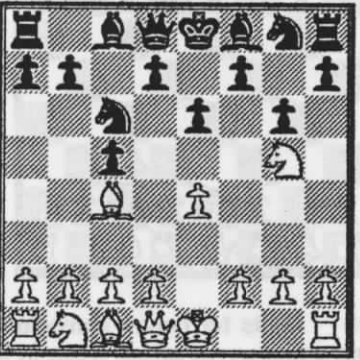
1. d4 c6 2. e4 d5 3. f3 e6 4. e5 c5
 5. c3 a6 6. Bd2 Nc6 7. Be3 cd4 8.
 Bd4 Nd4 9. Qd4 Ne7 10. Bd3 Nc6
 11. Qe3 Qc7 12. f4 b6 13. Qg3 g6
 14. Qh4 Bb7 15. Nd2 Be7 16. Qh6
 O-O-O 17. Ngf3 Rdg8 18. O-O-O Bf8
 19. Qh4 h6 20. Qf2 Bc5 21. Qe2 Kd7
 22. Nb3 Ra8 23. Nc5 bc5 24. c4 d4
 25. Be4 Ke7 26. h4 Nb4 27. Bb1 Bf3
 28. Qf3 Rab8 29. h5 Qb6 30. b3 a5
 31. hg6 fg6 32. g4 a4 33. Rh3 ab3
 34. ab3 Qa5 35. Rd2 Qa8 36. Bg6
 Qa1 37. Bb1 Ra8 38. Rhh2 Ra7 39.
 g5 Rha8



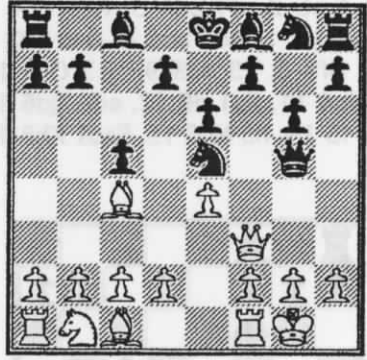
40. g6? Qxb1+! 41. Kxb1 Ra1+
 White Resigns

Schnee UNR **Godinez 1383**
Midwinter Open
2/4/95 **Round 2**
Sicilian Defense

1. e4 c5 2. Nf3 Nc6 3. Bc4 g6 4.
 Ng5 e6



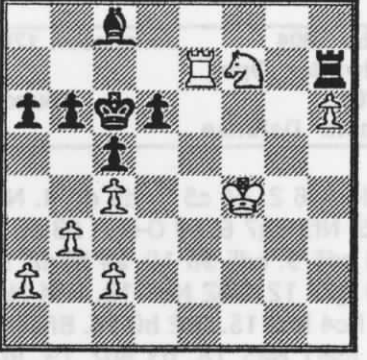
5. Qf3? Qxg5 6. O-O Ne5



7. Qc3 Nxc4 8. Qxh8 Nf6



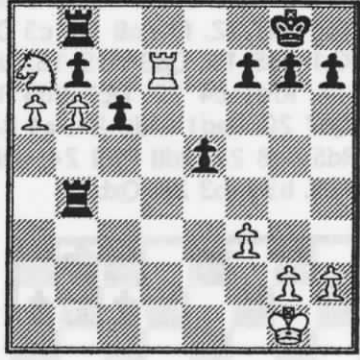
9. d3! Qe5 10. dxc4 Ng4 11. Qxe5
 Nxe5 12. Nc3 b6 13. Bf4 f6 14. b3
 g5 15. Be5 fe5 16. Nb5 Kd8 17. g3
 Bb7 18. f4 ef4 19. gf4 Bg7 20.
 Rae1 g4 21. f5 ef5 22. ef5 Bf6 23.
 Nd6 Bd4 24. Rf2 Bf2 25. Kf2 Kc7
 26. Ne8 Kc6 27. Nf6 Rf8 28. Nh7
 Rf5 29. Kg3 Rf7 30. Ng5 Rg7 31.
 Kg4 d6 32. h4 Bc8 33. Kf4 a6 34.
 h5 Rg8 35. h6 Rh8 36. Nf7 Rh7 37.
 Re7!



37...Be6? 38. Nd8 Mate.

Arnot 1292 **Scarff 1653**
Midwinter Open
2/4/95 **Round 3**
French Defense

1. e4 e6 2. d4 d5 3. ed5 Qd5 4. c4
 Qe4 5. Be3 Bd7 6. Nc3 Bb4 7. Nf3
 Nf6 8. Bd3 Qg4 9. O-O Bd6 10. Ne5
 Qh4 11. f3 Nc6 12. c5 Be5 13. de5
 Ne5 14. Be2 Rd8 15. Qb3 Bc6 16.
 Nb5 O-O 17. Na7 Bd5 18. Qc3 Nc4
 19. Qd4 Qd4 20. Bd4 e5 21. Bc3 c6
 22. b3 Ne3 23. Rfe1 Nc2 24. Ba5
 Ra8 25. Bb6 Na1 26. Ra1 Nd7 27.
 b4 Nb6 28. cb6 Rfd8 29. a4 Bb3 30.
 Ra3 Rd2 31. Rb3 Re2 32. Rd3 Ra2
 33. Rd7 Rb8 34. a5 Rb2 35. a6 Rb4



36. Nxc6 Rb1+ 37. Kf2 bxc6 38.
 b7 g6? (38...Ra1) 39. a7 R1xb7
 40. Rxb7 Rd8 41. Rb8 Black
 Resigns.

Gisselbeck 1388 **Shuck 1632**
Midwinter Open
2/5/95 **Round 4**
Alekhine's Defense

1. e4 Nf6 2. Nc3 d5 3. ed5 Nd5 4.
 Nd5 Qd5 5. Nf3 Bg4 6. Be2 Nc6 7.
 O-O e5 8. d3 Be7 9. Re1 f6 10. Nh4
 Be6 11. Bg4 O-O-O 12. Nf5 Qd7 13.
 Ne7 Qe7 14. Bf3 Nd4 15. Be4 f5 16.
 Bf3 Qd6 17. Be3 f4

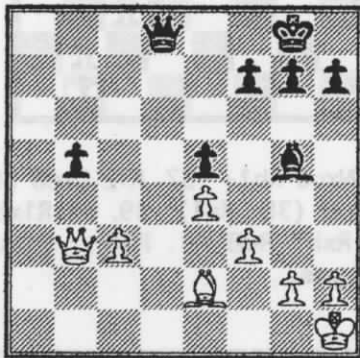


continued next page

18. Bxd4 exd4 19. Rxe6 Qc5 20. Qe2 Qb5 21. b3 Rhe8 22. Bg4 Kb8 23. Re1 Re6 24. Qe6 h5 25. Bf5 a6 26. h3 Rf8 27. Bg6 Qg5 28. Re5 Qd8 29. Qe7 Black Resigns.

Brennan 1700 Long 1700
Midwinter Open
 2/5/95 Round 4
Sicilian Defense

1. e4 c5 2. Nf3 d6 3. d4 cd4 4. Nd4 Nf6 5. Nc3 e5 6. Nb3 a6 7. Be2 b5 8. Bg5 Be7 9. Bf6 Bf6 10. O-O Bb7 11. Nd5 Nd7 12. f3 Rc8 13. c3 O-O 14. Kh1 Bg5 15. Qd3 Nc5 16. Nc5 dc5 17. Rfd1 c4 18. Qc2 Bd5 19. Rd5 Qc7 20. Rad1 Rfd8 21. a4 Rd5 22. Rd5 Rd8 23. Rd8 Qd8 24. axb5 axb5 25. b3 cxb3 26. Qxb3



26...Qd2 27. Qxb5 h5 28. Qd3 Qe1 29. Bf1 Be3 30. Qe2 Draw Agreed.

McBroom 1698 E. Mayer 1382
Midwinter Open
 2/5/95 Round 4
Torre Attack

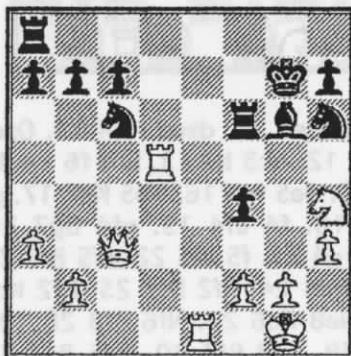
1. d4 Nf6 2. Nf3 b6 3. Bg5 e6 4. e3 Bb7 5. Bd3 c5 6. c3 Nc6 7. Nbd2 cd4 8. cd4 Be7 9. O-O Nd5 10. Be7 Qe7 11. a3 O-O 12. Rc1 Rac8 13. Rc3? Nc3 14. bc3 Qa3 15. Qb1 Qc3 16. Bh7 Kh8 17. Qe4 Nd4 18. Qh4 Nf3 19. Nf3 Qf6 White Resigns.

Johansson 2117 Z. Mayer 2046
Midwinter Open
 2/5/95 Round 4
Relfson's Gambit

1. e4 e5 2. d4 ed4 3. Nf3 Bb4 4. Nbd2 Qe7 5. Bd3 Nc6 6. O-O Bd2 7. Bd2 Nf6 8. c3 dc3 9. Bc3 O-O 10. e5 Ng4 11. Re1 d6 12. ed6 Qd6 13. Qc2 f5 14. h3 Nh6 15. Rad1 Kh8 16. a3



16...Qd5? 17. Bc4! Qxc4 18. Bxg7+ Kxg7 19. Qxc4 f4 20. Rd5 Bf5 21. Qc3 Rf6 22. Nh4 Bg6



23. Re6 Raf8 24. Rd7+ Black Resigns.

Kuba 1904 Johansson 1700
Midwinter Open
 2/5/95 Round 5
Benoni Defense

1. d4 Nf6 2. c4 c5 3. d5 d6 4. Nc3 g6 5. Nf3 Bg7 6. e4 O-O 7. h3 e6 8. Bd3 ed5 9. cd5 a6 10. a4 Nbd7 11. O-O Qc7 12. Nd2 Ne5 13. Nc4 Nc4 14. Bc4 Re8 15. Qc2 b6 16. Bf4 Nd7 17. Rae1 Ne5 18. b3 Bd7 19. Rb1 Reb8 20. Bd2 b5 21. Be2 c4 22. Na2 Rc8 23. Rfc1 Qd8 24. ab5 ab5 25. Nb4 g5 26. Bc3 Ra3 27. bc4 Rc3 28. Qc3 bc4 29. Qe3 Qf6 30. Nc2 Ng6 31. Rb7 Ba4 32. Qa7 Qf4 33. Ne3 Be8 34. Rb8 Rb8 35. Qb8 Kf8

36. Rc4 Be5



37. g3 Qf6 38. Ng4 Qe7 39. Rc7 Black Resigns.

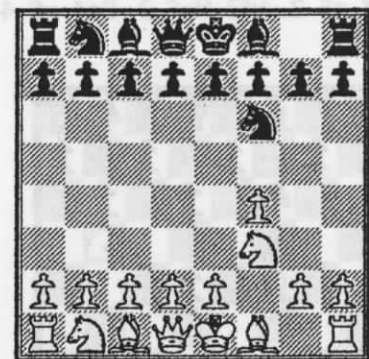
G. Younker 1635 Nowak 2200
Valentine Open
 2/18/95 Round 1
Bird's Opening
 Annotations by Greg Nowak

1. f4

Rarely seen, which can be an advantage in itself. I played the Bird's for years in CCLA & ICCF postal chess, sometimes against masters with good success. I also played it in Milwaukee OTB major events, so I'm familiar with its nuances. The last GM I can recall who tried it was Bent Larsen. He beat Spassky with it! Why don't more GMs play it? Probably because of From's Gambit (1...e5). Not that the From's is that good, but that it throws the game into a melee of tactics instead of usual strategy. The Dutch fell into disfavor for a while because of the Staunton Gambit

Soltis has a Bird's book out.

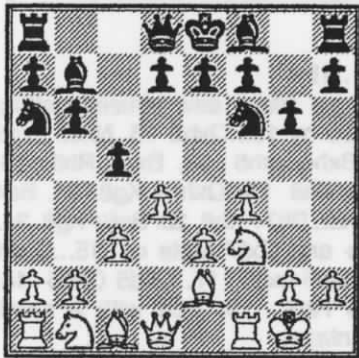
1...Nf6 2. Nf3



2...c5 fights for center immediately without giving up my e5 too easily to the Knight.

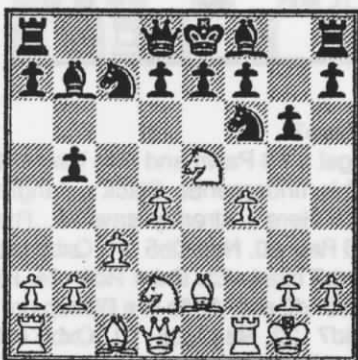
(continued next page)

3. e3 g6 The K's fianchetto is best in all Bird's lines, especially the Stonewall.
 4. c3 still can transpose into a Dutch reversed with 5. d3, Qc2, e4. 4...b6 A routine Bg7 didn't seem a timely move. The King's Bishop is hitting a Pawn wall, so why not develop some Q side pieces sooner, which have an earlier chance of getting into play. I remember Gary likes the Stonewall. 5. d4 Na6 6. Be2 Bb7 7. O-O

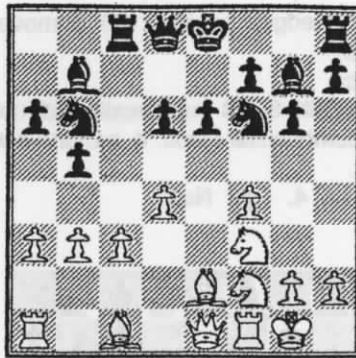


7...Nc7

So what else? I can't leave [the Knight] at a6 wishfully thinking of dxc5 (only in coffeehouse chess). 7...d5 loses to 8. Bxa6 Bxa6 9. Qa4+ and Qxa6. Also, if I went cxd4 now, he just might go cxd4 and Nbc3. By waiting a move, he may go Nbd2. 8. Nbd2 cd4 9. ed4 b5 10. Ne5

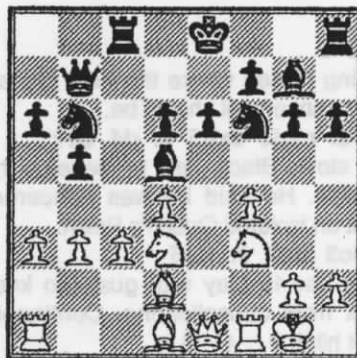


10...a6 so I can put either N at d5 and play Knights in front of Pawns ala Nimzowitchian fashion. 11. Ndf3 (headed for b5! 11. f5 was juicy with tactics) 11...d6 12. Nd3 e6 so I can retake KPxP as an option. 13. Qe1 Ncd5 14. a3 Rc8 15. Nf2 Nb6 16. b3 weakens his Pawn chain. 16...Bg7



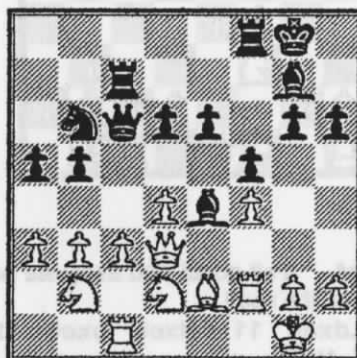
17. Ng5

I still think he had to chance 17...f5!? to create some hopes of attack. He can't let Black get too secure, to insert screws in, at his leisure. 17. Ng5 just loses more time. 17...Qc7 18. Bd2 h6 Didn't want White to get Bf3. 19. Nf3 Bd5 20. Bd1 Qb7 21. Nd3



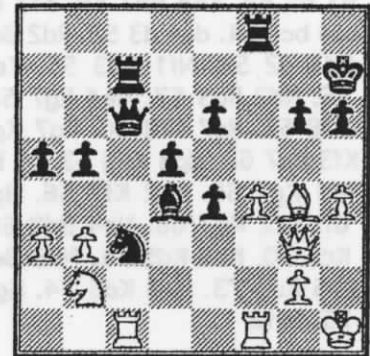
21...Ne4

I feel much better about O-O with his QB taken out. 22. Nb2 Nd2 23. Qd2 O-O 24. Rc1 a5 25. Rf2 Rc7 26. Qd3 Qc6 27. Nd2 f5 28. Be2 Be4



29. Qe3 (if 29. Qxb5 Qxb5 30. Bxb5 Bxd4! winning the exchange)
 29...Nd5 (the "Octopus" reaches)
 30. Qg3 Kh7 I only had 9 min. left.

He had 10. So why go into unnecessary complications when I still have my threats there by defending first? 31. Ne4 fe4 32. Rff1 Nc3 33. Bg4 Bd4 34. Kh1 d5 35. h4



35...b4

I only have 5 minutes left, just anchoring things down. 36. axb4 axb4 37. Na4 Rcf7 38. Rfd1 Bg7 39. Rf1 Qd6 40. Nxc3 bxc3 White Resigns.

Were any black moves brilliant? Not really. A handsome game can be just a long series of consistent sensible moves. Petrosian played a lot of "beautiful" games this way, but Tahl was usually more popular with the audience.

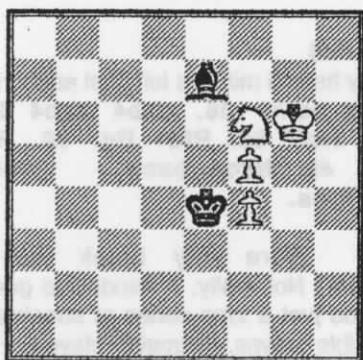
I also recall Reshevsky as a sensible player. Too bad the bulk of his games are lost. Does anyone recall Reshevsky's 500 games?

Petrak 1666 Carpenter 1800
 Valentine Open
 2/18/95 Round 2
 Dunst Opening

1. Nc3 g6 2. e4 Bg7 3. Nce2 e5 4. Ng3 Nf6 5. Nf3 O-O 6. Be2 Nc6 7. c3 d5 8. d3 Qd6 9. h3 Rd8 10. Bg5 h6 11. Bf6 Bf6 12. O-O Bg7 13. Nd2 Be6 14. Re1 Ne7 15. c4 dc4 16. Nc4 Qc5 17. Qc2 Nc6 18. Ne3 Qe7 19. a3 Rd7 20. Rad1 Rad8 21. Bg4 Nd4 22. Qc3 Bg4 23. hg4 c6 24. Nc2 Ne6 25. Ne2 Nc5 26. Ne3 Ne6 27. Rd2 Qh4 28. Qb3 Nd4 29. Nd4 ed4 30. Nf1 Be5 31. Qd1 Kh7 32. Qf3 Qg5 33. Rc2 h5 34. Qh3 Kg7 35. gh5 gh5 36. Qf5 Qf5 37. ef5 f6 38. Re4 Kh6

Petrak / Carpenter cont.

39. Rce2 Rg7 40. f4 Bb8 41. g3 Rd5 42. Kf2 Bc7 43. Kf3 c5 44. Re7 Bd8 45. Rg7 Kg7 46. Nh2 Kf7 47. b3 b5 48. Ke4 Rd7 49. Kf3 c4 50. bc4 bc4 51. dc4 d3 52. Rd2 Ba5 53. Rd1 d2 54. Nf1 Rd3 55. Ke2 Ra3 56. Nd2 Rg3 57. Ne4 Rg7 58. Ra1 Bd8 59. Ra7 Kf8 60. Rg7 Kg7 61. Kf3 Bc7 62. Ng3 Kh6 63. c5 h4 64. Nf1 Kg7 65. Nh2 Kf7 66. Ng4 Ke7 67. Nf2 Kd7 68. Ne4 Bd8 69. Kg4 Kc6 70. Kh5 Kd5 71. Nd6 Be7 72. Kh5 Kc5 73. Ne8 Kd5 74. Kg6 Ke4 75. Nxf6



75...Kxf4 76. Nd5+
Black Resigns.

Nowak 2200 **Jensen 2009**
Valentine Open
2/19/95 **Round 3**
Benko Opening
Annotations by Greg Nowak

Unlike my mood with Younker, where I was in a maneuvering mood, Here, I was in a dangerous, gambling mood. I wanted a "barn burner".

1. g3

Back in my Milwaukee days, Greg Defatis, of Chicago (about 2500), used to visit our North Centrals and Western Opens. He used 1. g3 often with great skill. He was partial to King's Indian Reverses (Benko beat Fischer with this, although that game started 1. g3 Nf6 2. Bg2 g6 3. e4) I used to wander off from my games and watch the "GM's and "SM's play on top boards on stage, especially on boards 1-3, which had demo boards for each.

1...d5 2. Nf3 c5

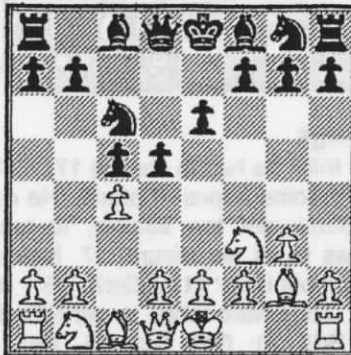
Glad to see that! White can get a reversed King's Indian / Benoni-type

double-edged position with a move in hand.

3. c4

Direct hit! 3...d4 would really add fuel to my combustible mood. 4. b4! and a wild Reti.

3...e6 4. Bg2 Nc6



5. O-O

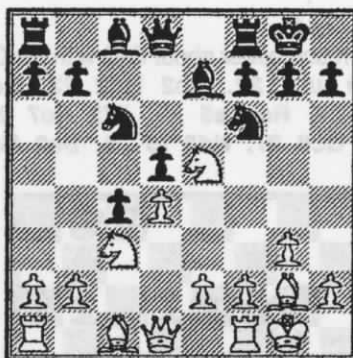
Waiting to see where the best Queen-side arrangement should be.

Nf6 6. cxd5 exd5 7. d4 c4?

Too slow. Black had to develop his Bishops. He said he was concerned about an isolated Queen's Pawn.

8. Nc3 Be7 9. Ne5

White has to play with gusto to keep Black from consolidating. Continuous direct hits! **9...O-O**

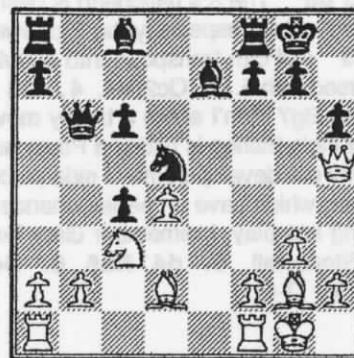


10. e4 Felt good! And away we go! Bring on the heat!

10...dxe4 11. Nxc6 bxc6 12. Nxe4 Nd5

(if 12...Nxe4 13. Bxe4 Bh3 14. Qh5 f5 15. Qxh3 fxe4 16. Qe6+ Kh8 17. Qxe4 with advantage)

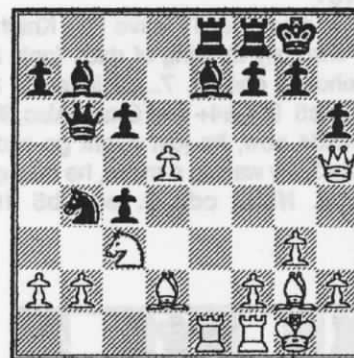
13. Qh5 (an "in-your-face" zinger!)
13...h6 14. Bd2 Qb6 15. Nc3



15...Nb4

Perhaps Black saw himself getting burned by 15...Qxb2 16. Nxd5 cxd5 17. Bxh6 gxh6 18. Bxd5 Rb8 19. Qg6+ Kh8 20. Qxh6+ Kg8 21. Be4 Rd8 22. Bh7+ Kh8 23. Bg6+ Kg8 24. Qh7+ and Qxf7 Mate or 15...Qxd4 16. Nxd5 cxd5 17. Qxd5 Qxd5 18. Bxd5 Rb8 19. Bc3 with a small advantage.

16. d5 Bb7 17. Rae1 Rae8



18. Rxe7!

But I get a d6 Pawn and nice threats for it! This undermines Black's dangling Knight. Here I already saw 18...Rxe7 19. d6 Re6 20. Na4 Qb5 21. Qxb5 cxb5 22. Bxb7 bxa4 23. Bxb4 Rb8 24. Rd1 Rxb7 25. d7 and White is a Bishop up, or 19...Rd7 20. Na4 Qb5 21. Qxb5 cxb5 22. Nc5 Bxg2 23. Kxg2 Rxd6 24. Bxb4 and White still has a small advantage, or 20...Qd4 21. Bxb4 c3 22. Qc5 wins. **18...Rxe7 19. d6 Re6 20. Na4 Qb5 21. Qb5 cb5 22. Bb7 Nd3 23. Nc3 Rd6 24. Be3 a6 25. Ne4 Re6**

Black has 12 minutes left. White 30.

26. b3 Rb8 27. Bd5 Re7

Black has 5 minutes left. White 29.

28. bxc4 bxc4

see diagram next page



Rajala 1535 Cain 1212
Valentine Open
2/19/95 Round 4
Queen's Pawn Game

1. d4 Nf6 2. e3 g6 3. Bd3 Bg7 4. Nd2 O-O 5. f4 d6 6. Ng3 Nc6 7. O-O Re8 8. c3 e5 9. de5 de5 10. fe5 Ne5 11. Ne5 Re5 12. Nf3 Rd5 13. Ne1 Qd6 14. h3 Rh5 15. Be2 Qd1 16. Bd1 Rg5 17. Kh2 Ne4 18. Bb3

Petrak 1666 Phillips 1853
Valentine Open
2/19/95 Round 4
Dunst Opening

1. Nc3 c5 2. d3 Nf6 3. Nf3 d5 4. h3 Nc6 5. Bg5 h6 6. Bd2 e5 7. e4 d4 8. Ne2 Be6 9. b3 Bd6 10. Ng3 Qd7 11. Be2 b5 12. Nh4 Ne7 13. Qc1 Rc8 14. f4 ef4 15. Bf4 Bf4 16. Qf4 Qc7 17. Qc7 Rc7 18. O-O O-O 19. Rac1 c4 20. Nf3 Rd8 21. Nd2 cd3 22. Bd3 a6 23. Nf3 Nc6 24. a3 Nd7 25. Ne2 Nde5 26. Ne5 Ne5 27. Nf4 Nd3 28. Ne6 fxe6 29. cxd3

29. Nc3!

Too much wild activity after 29. Bxd4 Nb2. The text secures White's position and takes away easy attacks and forces Black to find a good plan with only 3 minutes left.

29...Ne5 30. Kg2

I had ideas of Bf4 & Re1, but with the King at g1 Black had Nf3+ & Rxe1.

30...Rd8

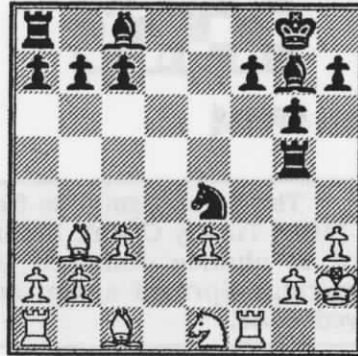
I remember the good old days at Milwaukee, when Ed Vans of Indianapolis got into time trouble in troublesome situations. His ears would turn beet red and he would wiggle and squirm. He was about fifty then. Where are the "Ed Vans" today?

31. Rd1 Red7 32. Bb6 Rb8

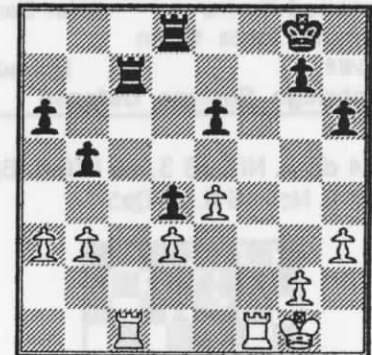
(Black has only 1 minute left)

33. Bd4 Re8 34. f4 Flag!

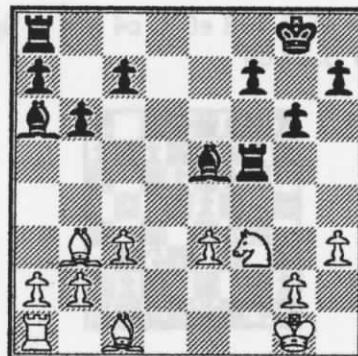
Black's flag mercifully drops. I had 14 minutes left.



18...Be5+! 19. Kh1 Ng3+ 20. Kg1 Nxf1 21. Kxf1 b6 22. Nf3 Ba6 23. Kg1 Rf5



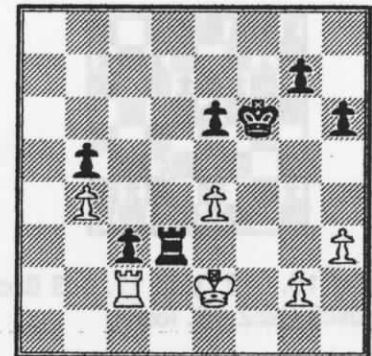
29...Rc3 30. Rxc3 dxc3 31. Rc1 Rxd3 32. Rc2 a5 33. b4 ab4 34. ab4 Kf7 35. Kf1 Kf6 36. Ke2



Jensen 2009 Petrak 1666
Valentine Open
2/19/95 Round 3
Lundin Defense

1. d4 Nc6 2. Nf3 d6 3. Bg5 h6 4. Bh4 Bg4 5. e4 a6 6. c3 Qc8 7. Bc4 Nd8 8. O-O e6 9. Nbd2 Be7 10. Bg3 Nf6 11. Qc2 Nh5 12. Bd3 Ng3 13. fg3 O-O 14. e5 Bf5 15. Bf5 ef5 16. Rae1 d5 17. c4 c6 18. Rc1 Qe6 19. Ne1 Bg5 20. Rf3 Bd2 21. cd5 Qd5 22. Qd2 Ne6 23. Rd3 Rfd8 24. Nc2 a5 25. Ne3 Qe4 26. d5 cd5 27. Nd5 Qe5 28. Ne7 Kh7 29. Qe3 Qb2 30. Rf1 Rd3 31. Qd3 Qd4 32. Qd4 Nd4 33. Nf5 Nf5 34. Rf5 Draw Agreed.

24. g4? Rxf3 25. Bd5 Rf1+ 26. Kg2 Rd8 27. c4 c6 28. Kf1 cd5 29. Kf2 dc4 30. Rb1 Rd1 31. Ke2 Rh1 32. b4 c3 33. Kf3 Rh3 34. Ke4 f6 35. Ba3 Rh4 36. Rg1 Bh2 37. Rf1 Rg4 38. Kf3 f5 39. Rd1 Bb7 40. e4 Be4 41. Ke2 h5 42. Rd8 Kh7 43. Rd7 Kh6 44. Bc1 f4 45. Ra7 h4 46. Ra6 h3 47. Rb6 Bg1 48. Rb8 h2 49. Rh8 Kg7 50. Rh3 h1=Q 51. Rh1 Bh1 52. a4 Be4 53. b5 Rg5 54. Kf1 Be3 55. Be3 fe3 56. Ke2 c2 White Resigns.



36...Rd4 37. Rxc3 Rxe4+ 38. Kd2 Rxb4 39. Rf3+ Ke7 40. Kc3 Rc4+ 41. Kb3 g5 42. g4 Rf4 43. Re3 Kf6 44. Rc3 Rc4 45. Rc4 bc4 46. Kc4 Ke5 47. Kd3 Kf4 White Resigns.

REMEMBER

Make known what you want on the business meeting agenda.

John Barto

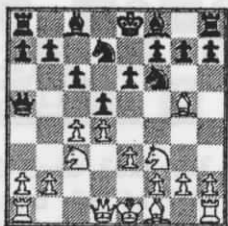
"Gracious in Victory, a Gentleman in Defeat"

by Sherwood Moore

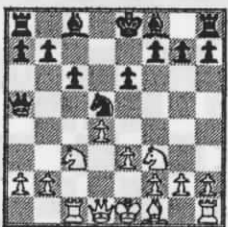
I have enclosed copies of two of our games. The first game was played in the last round of the "1984 Montana Open". I had watched John upset Dennis Burke in an earlier round with the Cambridge Springs. I was fortunate that [John] let me off with a draw.

Sherwood Moore John Barto
 Montana State Open Round 5
 5/13/84 Cambridge Springs Defense

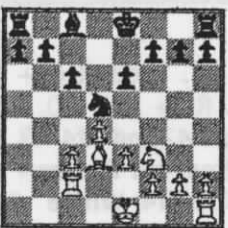
1. d4 d5 2. Nf3 e6 3. c4 Nf6 4. Bg5 Nbd7 5. Nc3 c6 6. e3 Qa5



7. Bxf6 Nxf6 8. cxd5 Nxd5 9. Rc1

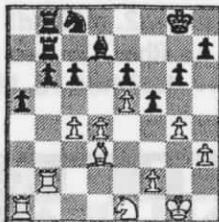


9...Bb4 10. Qc2 Qxa2 11. Bd3 Bxc3 12. bxc3 Qxc2 13. Rxc2



13...a5 14. O-O O-O 15. Ra1 b6 16. e4 Ne7 17. Ne5 f6 18. Nf3 Ba6 19. c4 Rfb8 20. g3 Bc8 21. Rb2 Bd7 22. e5 f5 23. Rab1 Nc8 24. h3 Ra7

25. g4 g6 26. Ne1 Rab7 27. Ra1

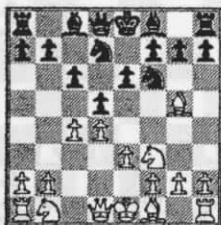


Draw Agreed

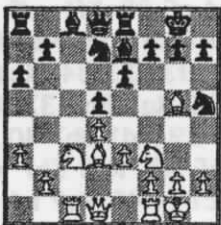
The second game is from the "1984 Turkey Open". I didn't want to chance John on the Cambridge Springs again, so I played 6. a3.

Sherwood Moore John Barto
 Turkey Open Round 3
 11/17/84 Queen's Gambit Declined

1. d4 d5 2. Nf3 e6 3. c4 Nf6 4. Bg5 Nbd7 5. e3 c6

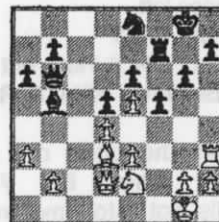


6. a3 Be7 7. Nc3 O-O 8. cd5 cd5 9. Bd3 Re8 10. O-O a6 11. Rc1 Nh5

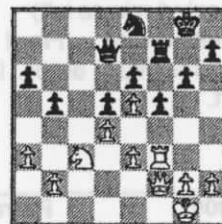


12. Bxe7 Rxe7 13. Ne5 g6 14. f4 Ng7 15. Rf3 f5 16. Rh3 Nxe5 17. fxe5 Bd7

18. Qe1 Rf7 19. Ne2 Rc8 20. Rc3 Rc3 21. Qc3 Ne8 22. Qe1 Qb6 23. Qd2 Bb5



24. Bxb5 Qxb5 25. Nc3 Qd7 26. Qf2 b5 27. Rf3



Draw Agreed.

I watched John play many games. He was always gracious in victory, and a gentleman in defeat.

For his work to promote chess in Montana, and his passion for the game, he shall be missed. We have lost a good Bishop, for chess.

Sincerely,

Sherwood Moore



In Remembrance of John Reid Barto

by Dennis Petrak

We lost a dear friend on the 21st of December, 1994. Thad Suits stopped by to see how John was doing and found him passed away.

My memories go back to 1981 when I first met John at the local chess club meeting. He was old then, but he could play a mean game of chess (as he soon demonstrated to me, several times). Soon we were making the rounds to the tournaments in the state and rooming together. We shared a lot of laughs about many things. It turned out that John had worked at the Great Falls Iron Works with my wife's grandfather. John would come over to dinner on occasion and share all he could remember about Mary Ann's grandfather and grandmother as he would, on occasion, visit them and have dinner. The funniest thing I remember about John happened on the trip back from the Turkey Open one

"Are you just going to sit here, waiting for a semi-truck...?"

November some years ago. As we were going up the hill after Bowmen's Junction, I hit a patch of black ice and spun three consecutive broadies on the highway. Afterwards we were stopped sitting in the middle of the highway counting our blessings and thanking God that we hadn't crashed and burned. John looked over at me and said, "Are you just going to sit here waiting for a semi-truck or are we going to get on with our trip?" You should have seen the look in his eyes

John Reid Barto was a gentleman's gentleman!

when he said that, it was wonderful.

One thing that stood out in my mind, and was touched on at his memorial, was that John Reid Barto was a gentleman's gentleman! I have never, in all the time I knew John, ever heard him say one bad thing about anyone! That, my friends, is a remarkable thing in this day and age.

John was a role model for the young people who came into his grace as he

would mentor them and point out the correct pathways.

And then we talk about his generous nature. Several times, John has funded the local chess tournaments here in Great Falls, as well as the state tournament. We had talked about setting up a trust for the local chess club, but I don't think he got that done.

What a graceful human being! I'll miss him as I drive around Great Falls thinking about how I'd seen him making his way, walking everywhere the past several years in all seasons. I'd usually stop and give him a ride to where he was going or he'd just let me know he was okay and be on his way again.

John Reid Barto, you are in good hands now.

And I'm sure he is in games with some of his old cronies, perhaps Otto Grosse, John Austreng and many of the others who passed before him.

Mostly, I'm happy that John will be with his wife, who passed early in their lives.

Peace be with you.

Dennis Petrak

MONTANA CHESS ASSOCIATION LIST OF RESIDENT MEMBERS

As of January 6, 1995

	NAME	Residence	Rtg
1	Nowak, Gregory W.	Missoula	2200
2	Johansson, Jan	Gardiner	2117
3	Thompson, John C.	Billings	2100
4	Mayer, Zygmund	Billings	2046
5	Motta, Paul S.	Missoula	2040
6	Jensen, Michael J.	Missoula	2009
7	Stubberud, Kip H.	Helena	2009
8	Svelmoe, Paul	Missoula	2000
9	Suits, Thad	Great Falls	1931
10	Lynch, William	Billings	1910
11	Loy, Jim	Bozeman	1908
12	Kuba, J.C.	Belgrade	1904
13	Phillips, Robert L.	Ronan	1853
14	Greer, William H.	Ashland	1852
15	Skovron, James	Great Falls	1839
16	Shughart, David W.	Florence	1834
17	Carpenter, Romie G.	Missoula	1800
18	McCourt, Daniel J.	Missoula	1770
19	Duke, David	Billings	1765
20	Hansen, Doug	Great Falls	1737
21	Hearn, Alan D.	Gardiner	1731
22	Erickson, Ron	Missoula	1714
23	Brennan, Leslie J.	Colstrip	1700
24	Long, Michael	Livingston	1700
25	McBroom, William	Missoula	1698
26	Anderson, Hans	Missoula	1694
27	Moore, Sherwood	Missoula	1683
28	Mostad, Thomas O.	Helena	1682
29	Petrak, Dennis F.	Great Falls	1666
30	Betz, Fred	Billings	1662
31	Goplen, Arman D.	Kalispell	1660
32	Scarff, Steven R.	Bozeman	1653
33	Shuck, Gordon	Whitehall	1632
34	Hildenstab, Duane H.	Helena	1630
35	Winer, Jason	Bozeman	1586
36	Rajala, Robert J.	Missoula	1535
37	Steinhof, Michael E.	Gardiner	1522
38	Martin, Robert	Billings	1513
39	Partney, Louis	Stevensville	1506
40	Rayburn, John	Missoula	1489



	NAME	Residence	Rtg
41	Hull, Robert A.	Livingston	1453
42	Martinez, Michael	Missoula	1433
43	Polcari, Lou	Billings	1425
44	Bains, Brandon	Belgrade	1417
45	Bridges, Travis	Great Falls	1404
46	Kennedy, John	Colstrip	1400
47	Gisselbeck, Donald	Missoula	1388
48	Godinez, Doug	Bozeman	1383
49	Mayer, Eriel	Billings	1382
50	Stauber, Craig	Bozeman	1379
51	Ammond, Jonni	Gardiner	1375
52	Petersen, Lyle I	Paradise	1364
53	Price, Donald M.	Bozeman	1348
54	Wolberd, Patrick	Billings	1343
55	Arnot, Paul B.	Bozeman	1292
56	Dereniowski, Dwight	Missoula	1282
57	Smith, Kevin	Bozeman	1227
58	Jacobs, Carl	Victor	1214
59	Cain, Ryan	Missoula	1212
60	Douglas, Nick	Great Falls	1193
61	Goforth, Emmet	Missoula	1173
62	Amundson, Hal	Helena	1152
63	McEwen, Dana	Great Falls	1115
64	Scarff, Sonya	Bozeman	1084
65	Suriano, Logan	Bozeman	1039
66	Bommakanti, Rajani K.	Bozeman	UNR
67	Bye, Griff	Kevin	UNR
68	Christionson, Jean	Great Falls	UNR
69	Donnelly, Don	Great Falls	UNR
70	Furdel, Bill	Great Falls	UNR
71	Gervais, Dan	Great Falls	UNR
72	Hooker, Mike	Great Falls	UNR
73	Kozubski, Marie	Bozeman	UNR
74	Luther, Larry	Great Falls	UNR
75	McCoy, Tania	Great Falls	UNR
76	Murray, John	Bozeman	UNR
77	Noonan, John	Great Falls	UNR
78	Regan, Bill	Great Falls	UNR
79	Harmon, Lucy	Billings	NonR
80	O'Brien, Mike	Butte	?



This list represents current, paid-up resident MCA members, and the data were taken from the February, 1995 Rating Supplement.

1994-1995 MCA GRAND PRIX POINTS

NAME	R/rock	Chnk	Freez	Midw	Fools	State O	TOTAL
1 Sponsor	Bill CC	GF CC	UCCC	UCC	Cas CC	MCA	
2 C =	1.163	1.149	1.057	1.078			
3 Rounds	4	5	4	5	4	5	
4 Johansson	8.375	10.35	8.456	9.702			36.883
5 Z. Mayer	8.375	5.75		7.546			21.671
6 Carpenter		11.49	6.342				17.832
7 Brennan		9.19		7.546			16.736
8 Skovron		5.75	4.228	5.39			15.368
9 D. Duke	8.375	5.75					14.125
10 Long			6.342	7.546			13.888
11 P. Motta	6.049	5.75					11.799
12 Kuba				10.78			10.78
13 Rajala			6.342				6.342
14 Shughart			6.342				6.342
15 Thompson	6.049						6.049
16 Moore		5.75					5.75
17 Amundson			3.382				3.382
18 Erickson			2.537				2.537
19 McCourt			1.691				1.691

Grand Prix Formula :

$$(N/5) \times (11 - P) \times C$$

where

N = no. of rounds

P = place in order among
Montana Resident Players
(the average of tied places)

C = average rating of all
players in the event / 1500 *

* For the purpose of determining the average rating of all players in an event, the ratings used by the director for pairings will be used, except that players without ratings will be assigned a number equal to :

Average rating of RATED players +
(W-L) x 100, where W = wins and
L = losses (of the unrated player)

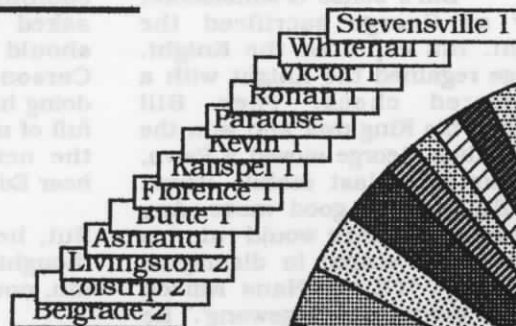
The top four finishers in MCA's Grand Prix contest, after the State Open, will qualify to compete in the State Closed

MCA'S

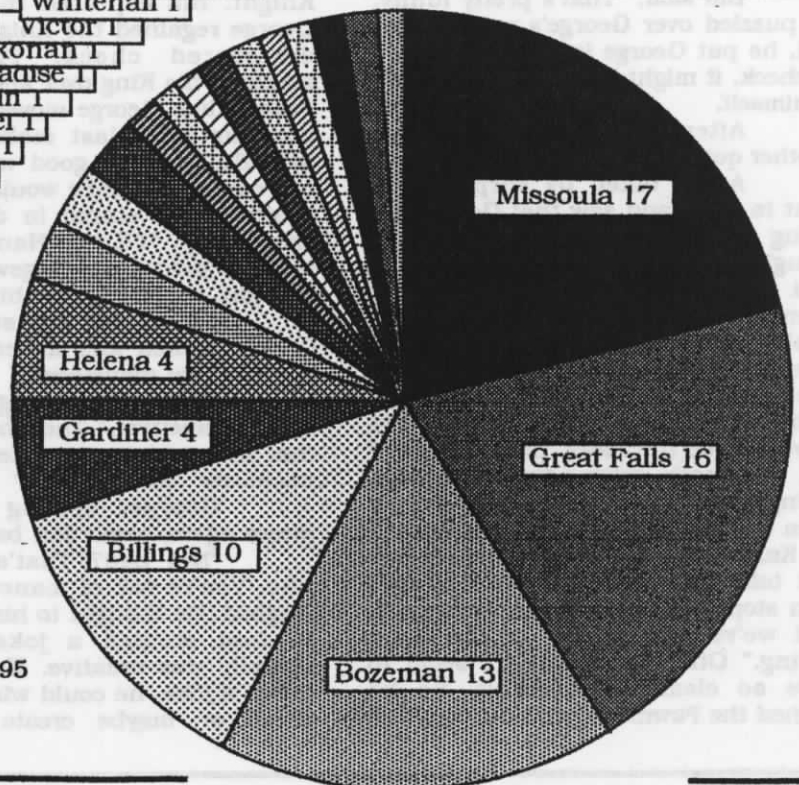
E
M
B
E
R
S
H
I

PIE CHART

(Resident Members)



Missoula members occupy over 21% of MCA's pie chart (the biggest slice) followed by Great falls (20%). Bozeman makes up > 16% and Billings, 12.5%. Gardiner & Helena each comprise 5% of the total. The remaining areas, with 2 or less members, total 20%.



as of 1/6/95

Years ago, Bill and George played chess at George's house every Wednesday. When sometimes Bill thought he was going to draw or even win,

A story

by Jim Loy

©
Jim
Loy

CREATIVITY

George would seem to luck out. And even he admitted that he had been lucky on some occasions.

On one of these Wednesdays, the two players were leaning over the chess board as usual. Bill, as he reached out to move, said, "Don't you get tired of beating me?"

"No," George said, "It's fun. You're playing very well today, by the way." He carefully moved a piece with his little finger.

Bill said, "I'd like to play a real fancy combination, some mate-in-twenty like Morphy or Anderssen. That would be a form of immortality. But I'm just not creative enough."

George suggested, "You could do a Super Sealer Twist."

Bill responded, "Ah, you made that one up."

"No, it's in Pawn Power, by Hans Kmoch."

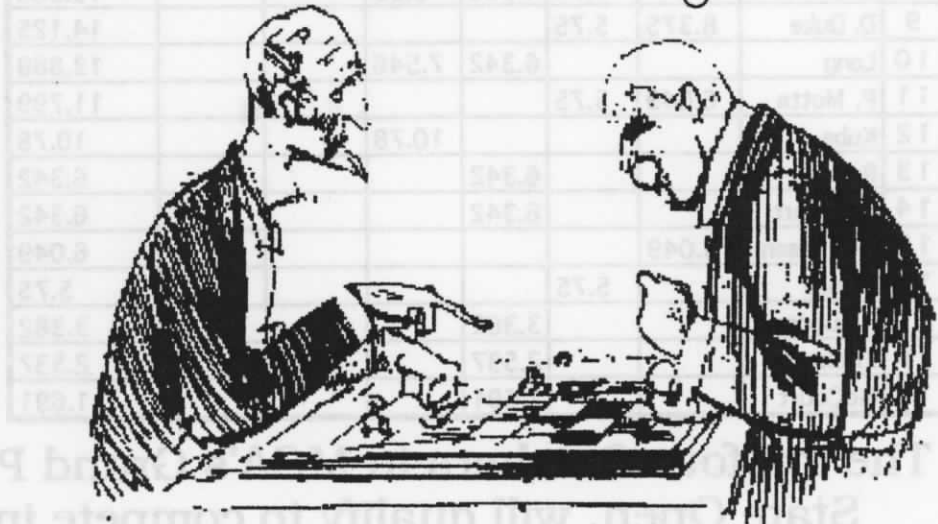
"It sounds like you're mispronouncing 'Kmoch'."

George quipped, "I'll bet Hans Kmoch mispronounced 'Kmoch'."

Bill said, "That's pretty funny." He puzzled over George's move. In the end, he put George in check. "Put him in check, it might be mate," he thought to himself.

After a time, George made another quiet move.

Again taken by surprise, Bill went to work and saw that George was trying to attack one of his Pawns. He thought, "It's going to be hard to protect that Pawn. I might as well push it." Then, he saw, to his dismay, that if he pushed the Pawn, George could sacrifice a Knight to win the Pawn. Then George could regain the Knight with a discovered check. He thought, "Wow, I lose the Pawn that way, too!" Bill was really getting into the game, seeing more than he ever had before. Then he thought, "But, after he regains the Knight, my King can just march over and take one of his Pawns. He can't even stop me. And we'll be even again. And we've got a draw in the Pawn ending." Other moves didn't seem to have so clear-cut a result. So he pushed the Pawn.



Bill's sense of satisfaction grew as George sacrificed the Knight. Bill captured the Knight. George regained the Knight with a discovered check. Then Bill marched his King over and won the Pawn. Then George moved a Pawn, blocking Bill's last mobile Pawn. And Bill had no good move. Any move he could make would ruin his position. Bill stared in dismay at 'zugswang'. "I'll bet Hans Kmoch couldn't pronounce 'zugswang'," he thought, trying to cheer himself up.

Bill looked up at George. George smiled and asked, "How'd you like that maneuver?"

Bill said, "George, you're full of maneuver." Then he realized that that was a pun. "Hey, 'full of maneuver', that's a joke."

George, setting up the pieces again, said, "Not bad."

"Not bad? That's a great joke. You're full of maneuver!" he laughed. He thought to himself that he had created a joke, so he actually was creative. If he could create a joke, he could win a chess game, or maybe create a great

combination. "Why not?" he asked himself. "And maybe I should sell my joke to Johnny Carson." He pictured Johnny doing his monologue: "Doc, you're full of maneuver." As they started the next game, Bill could just hear Ed McMahon laughing.

Bill lost that game too. But, he seemed happier. George thought that maybe Bill was more fun, now that he was creative.

"Hey, Dr. Heimlich's full of maneuver, too."

On second thought...

If your game isn't published in Montana Chess News, you may see it in **Rocky Mountain Chess** P.O. Box 1508 Mills, WY 82644 (307) 235-5705



Create beautiful chess diagrams! Linaires TrueType™ chess font. Specify Windows or Macintosh. Send \$29 to: Alpine Electronics, 526 West 7th, Powell, WY 82435 **Money-back guarantee!**

MCA BYLAWS

1. The President shall act as the official delegate for Montana to the U. S. Chess Federation. He will also appoint the two alternate voting members.
2. MCA shall adopt a schedule of membership fees with categories and rates as follows:

Juniors (under 18)	\$3 /yr.
Regular	\$6/yr.
3. All players in MCA sponsored or sanctioned events (except where specially designated) shall be required to join MCA.
First-time players, new to USCF will receive one (1) year free MCA membership to help with costs.
4. MCA will subsidize 50% of a yearly USCF membership fee for first time JUNIOR players who are legal residents of Montana.
5. The MCA shall make appropriate awards for the following:
 - a) Montana State Chess Champion(s)
to the winner(s) of the State Championship
 - b) Montana Grand Prix Chess Champion
to the winner of the Grand Prix competition
 - c) Montana State Postal Chess Champion(s)
to the winner of the Montana Postal Chess Tournament
 - d) Montana State Speed Chess Champion
to the winner of the State Speed Chess Championship
 - e) Montana Senior Chess Champion
to the Montana player age 50 or over with the best showing in the Montana Open
 - f) Biggest Upset of the Year
to the Montana resident (at the time of the game) who wins a game against a higher-rated opponent where the difference in ratings is the greatest for any game played in an open tournament during the calendar year. The ratings of both players must be established at the time of the game.
 - g) Greatest Rating Gain for the Year
to the player with the most gain in rating points according to the annual list published by the USCF. The player must have an established rating at the beginning of the year, and must be a Montana resident for at least six months, including either the beginning or the end of the year.
 - h) Montana High School Chess Champion
to the winner of the State High School Championship
 - i) Grand Slam Award
to any player who takes a clear 1st place in four Grand Prix tournaments during the course of the MCA tournament calendar year (after a Montana Open to the next Montana Open). The trophy or plaque will have the name of the player and the four tournaments in which he/she took 1st place.
6. In the State Closed playoff, all players tied for 1st place will be listed as co-champions of that year.
7. The Montana Postal Championship shall be an official MCA annual event. Only members who are legal residents of Montana may enter.
8. Any tournament "sponsored" by the MCA is:
 - a) Organized and directed by officers of the MCA or persons appointed by MCA.
 - b) Financially supported by the MCA.
 - c) Advertised in the official newsletter of the MCA.
9. Any tournament "sanctioned" by the MCA must:
 - a) be advertised in the official newsletter of the MCA
 - b) require MCA membership
10. In any tournament "sponsored" or "sanctioned" by the MCA the following conditions will apply:
 - a) The entry fee for all players will be the same except in the case of Junior players, who will receive a 50% discount. In all "sponsored" events, the current State Champion(s) will be entitled to free entry.
 - b) A uniform tie-breaking system for prizes will be used.
The order will be: 1) Median 2) Solkoff 3) Cumulative
 - c) Prizes advertised must be available to the prizewinners at the end of the event. The exception will be the State Closed, in which the name of the State Champion would need to be engraved on the trophy. The trophy would then be delivered within 60 days to the new State Champion.
 - d) Any change in the starting time for a round, as determined by the tournament director, will be limited to no more than plus or minus one (1) hour from the advertised starting time, except in the case where the Director may delay the last round to await the conclusion of games crucial to pairings. Any changes shall be announced before the start of the previous round.
 - e) The time control for any MCA Grand Prix game shall not be faster than 30/90, SD/1.
11. The Montana State Open tournament will be "sponsored" by the Montana Chess Association and will be an "Open" tournament. Players from any state are welcome.
12. The entry fee for the Montana Open shall be: \$15.00 per player in advance, \$20.00 at the playing site. Junior players (under 20) shall pay 1/2 price.
13. There will be a "Closed" playoff following the State Open to determine the State Champion. The ten players to compete in the "Closed" will be the previous year's State Champion, the top four (4) finishers in the Grand Prix, and the top five (5) Montana finishers in the State Open. Non-resident members are not eligible for the State Closed playoff.

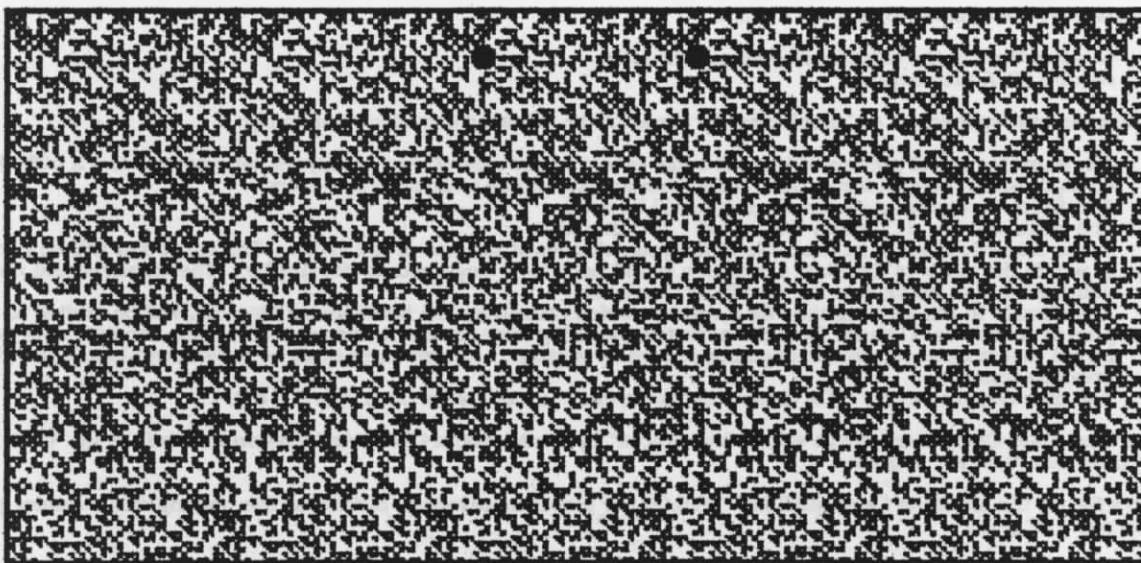
14. After the Montana Open, the Grand Prix finishers will first be determined for seeding into the State Closed playoff. Then, excluding the top four Grand Prix finishers and the previous State Champion, the top five finishers (Montana residents) in the Montana Open will be determined and seeded into the State Closed playoff.
15. The procedure for determining alternate players for the "Closed" is as follows: Grand Prix seeds will be replaced by those next in line in the Grand Prix standing; State Open seeds will be replaced by players next in line in the State Open standings; A sole State Champion will be replaced by the # 6 finisher in the Montana Open; A Co-State Champion will be replaced by the other co-champion with the best tie-breaks in the previous State Closed playoff.
16. When there is a tie in the "Closed" playoff, the following method of tie-break will be used to determine who is seeded into the next year's "Closed" playoff:
 - a) If the current champion is one of the tied players and he is the sole champion from the previous year, or the only one of the previous year's Co-Champions, then he shall be the seeded player.
 - b) In a tie not involving the current champion, the player with the best standing in the previously held State Open, including tie-breaks, shall be the seeded player.
 - c) In a tie not involving the current champion or a player who competed in the previous State Open, the player with the best Grand Prix standing shall be the seeded player.
17. The State Closed shall be an MCA "sponsored" event. The MCA Board members shall decide, by a majority vote, the date and location of the playoff and make the appropriate announcement at the State Open. The playoff must take place by no later than October 31st of that year.
18. The Grand Prix shall begin after the Montana Open each year, and conclude with the following year's Montana Open. Only a Swiss-system, open tournament will be eligible to be a Grand Prix event. In any Grand Prix tournament, all grand Prix points will be issued to the first ten Montana finishers with a plus score, respective of finish. No tie-breaking will be in effect for grand Prix points, i.e. Two players tie for 1st. They would split 1st and 2nd Grand Prix points equally. Grand Prix points will not be issued to non-resident members. The Secretary/Treasurer shall compute the Grand Prix points awarded and track the standings through the year, arranging for those standings to be published in the official newsletter throughout the year.
19. Grand Prix points will be awarded according to the following formula:

$$(N/5) \times (11 - P) \times C$$
 where

N	=	Number of rounds in the event
P	=	Place in order of finish among Montana resident players (the average place in the event of ties)
C	=	Average rating of all players in the event / 1500

For the purpose of determining the average rating of all players in an event, the ratings used by the director for pairings will be used, except that players without ratings will be assigned a number equal to :

Average rating of RATED players + (W-L) x 100 where W = wins and L = losses (of the unrated player).
20. MCA Grand Prix events will be limited to one (1) per sponsoring USCF affiliate organization per year. All MCA Grand Prix events must be announced as such in advance in *Montana Chess News*
21. The annual MCA Business Meeting will be held in conjunction with the Montana State Open, and the agenda for the Business Meeting will be decided by the members throughout the year and announced in advance of the State Open in the MCA newsletter.



AN IN-DEPTH LOOK AT MCA



Upcoming Events



All MCA Grand Prix events will be advertised as:

AN MCA GRAND PRIX EVENT



WESTERN MONTANA BOOKWORM MARCH 11, 1995 G/15 QUICK CHESS EVENT

USCF QUICK CHESS RATINGS USED

Rm. 362, Social Science Building, University of Montana, Missoula, MT 59801. Round Robin format. EF: \$8 Juniors \$4. Time control: G/15. \$5 b/entries Reg. 10:00-10:30am 3/11. Rounds: Depending on number of entries. NS, NC, W Advance registration or info: Dan McCourt, 608 West Central, Missoula, MT 59801 (406) 721-0254

FOOL'S PARADISE OPEN APRIL 1, 2, 1995



AN MCA GRAND PRIX EVENT



Grand Hotel, Big Timber, MT. Two events - One entrance fee. Main Event: Fool's Paradise Open: 4 SS. Time control: 30/90, SD/1 Rds: 9am, 2:00pm, 8:30am, 2:00pm. Reg: 8:00 - 8:40am Apr 1st. EF \$20 if by 3/30 (No phone entries) \$25 at site (Juniors 1/2) Prizes = \$100 & Trophy 1st, trophies to Top B, C, D/E & Biggest Upset. MCA memb. reqd. (\$6) O.S. OK. Second Event: Time Controls That Try Men's Souls: 5 SS Blitz, Time control: G/5. Rounds: 10:00pm, 10:15pm, 10:30pm, 10:45pm, 11:00pm. Entrance is free for those entered in Main Event, \$10 for walk-ins. Prizes for blitz event: Trophy & \$20 First Place, \$20 2nd Place, \$20 3rd Place, \$20 4th Place, \$20 5th Place. NS, NC, W. Reg: Checks payable to: Les Brennan, Box 2404, Colstrip, MT 59323 (406) 748-2154

CROCUS OPEN APRIL 22, 23, 1995

Room 362, Social Science Building, University of Montana, Missoula, MT. 4 Round Swiss. Time control: 30/90, SD/1. Rounds: 10:00am, 6:00pm, 8:00am, 1:00pm. Registration: 9:00 - 9:30am April 22. (NO phone entries) EF \$15 if rec. by 4/20, \$22 at site. Prizes: \$100 1st place, \$50 2nd, \$20 < 1900, \$10 < 1700, \$20 Biggest Upset (Both players must have nonprovisional rgs). MCA membership required (\$6), other states OK. No smoking, No computers, Wheelchair accessible. Full EF refund if cancellation called in to (406) 243-2843 before 6:00pm, 4/21. For advance registration or info: Donald Gisselbeck, 10455 Point Six Rd., Missoula, MT 59802. (406) 549-4426.

ANNULAR ECLIPSE OPEN APRIL 29, 1995

Room 274, Student Union Building, MSU Bozeman, MT. 5 SS. Time control: G/60. Rounds: 9am, 11:00am, 2:00pm, 4:00pm, 7:00pm. Reg: 8:30 - 8:50am Apr. 29. EF \$10 if rec. by 4/27 (No phone entries) \$15 at site. Juniors 1/2 price EF. Prizes: \$ per entries. MCA memb. reqd. (\$6) O.S. OK. NS, NC, W. Adv. reg: Make checks payable to: University Chess Club, SUB Box 23, MSU, Bozeman, MT 59717. For info, contact Steve Scarff (406) 586-4479

MAY EVE QUICK OPEN APRIL 30, 1995

Room 274, Student Union Building, MSU Bozeman, MT. 11 SS if >12 entries. RR if 7-12 entries. Double RR if <7 entries. Time control: G/15 (USCF Quick Chess Ratings). First round: 9am All other Rds to follow ASAP. 45 min. lunch break between Rds. 6 & 7. Note: The last round should end by 4:00pm. Reg: 8:30 - 8:50am April 30. EF \$10 if rec. by 4/27 (No phone entries) \$15 at site. Juniors 1/2 price EF. Prizes: \$ / entries. MCA memb. reqd. (\$6) O.S. OK. NS, NC, W. Adv. reg: Make checks payable to: University Chess Club, SUB Box 23, MSU, Bozeman, MT 59717. For info, contact Steve Scarff (406) 586-4479



PLAN NOW TO ATTEND

THE 60TH

MONTANA STATE OPEN



May 20,21, 1995

Montana State University, Bozeman

Wilson Hall, Rooms I-153. 5 Round Swiss.

Time Control: 30/90, SD/1. Rounds: 9:00am, 2:00pm, 7:30pm, 9:30am, 3:00pm. Reg: 8:15-8:45am 5/20. EF \$15 if rec. by 5/18, \$20 at site.

Prizes: Trophies, Trophies, Trophies

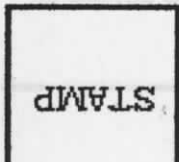
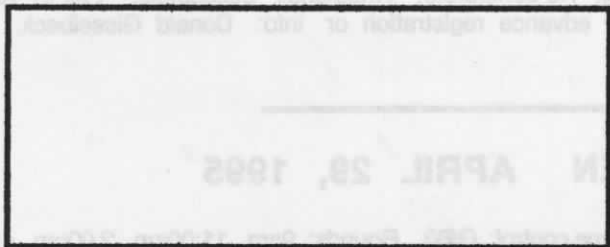
MCA Business Meeting Sunday @ 8:30am (5/21)

Advance registration / info:

David Duke, 4 Wakefield Dr., Billings, MT 59102 (406) 655 - 0586
NS, NC, W MCA memb. req. (\$6)



22 Montana Chess News



CROCUS OPEN APRIL 22, 1995

AR ECLIPSE OPEN APRIL 28, 1995

QUICK OPEN APRIL 30, 1995

News 21