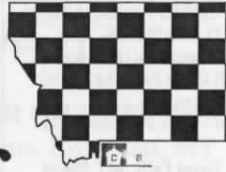


# Montana Chess News



Volume 30: Issue 5 – SEPTEMBER 2005



Can white play Nh5 and win?

## INSIDE THIS ISSUE

- UCCC Intercity Invitational by Bill McBroom
- UPCOMING EVENTS
- AUNTIES OPEN
- GAMES FROM UNIVERSITY CHESS CLUB MISSOULA by Romie Carpenter
- LAST MINUTE NEWS!

## The MCA CLOSED CHAMPIONSHIP

OCTOBER 8-9

### Qualified players

Phillips, Robert L.

Haluk Beyenal

Bob Martin

Jens O Lundell

J Michael Jenson

Jim Skovron

## Hurricane Victims Need Your Help Today

Think about it  
You don't have a house  
Your kid is hungry  
You lost everything you had  
What you would do?  
**LETS HELP THEM**



**MONTANA CHESS ASSOCIATION  
MCA BOARD MEMBERS**

Nick Doulas – President (899-4664)  
523 27th St. S Great Falls, MT 59405  
[doulas41@bresnan.net](mailto:doulas41@bresnan.net)

Jim Skovron – Vice President (771-0630)

1113 Carlos, Great Falls, MT 59404  
[skovron5@hotmail.com](mailto:skovron5@hotmail.com)

Haluk Beyenal – Eastern V.P (994-2269)

29 Border Lane, Apt #2, Bozeman, MT 59718

[Haluk\\_Beyenal@hotmail.com](mailto:Haluk_Beyenal@hotmail.com)

Romie Carpenter – Western V.P

Bill McBroom - Secretary / Treasurer  
(728-4654)

2321 Raymond, Missoula, MT 59802

**EDITOR**

Haluk Beyenal

**Editorial Board**

Steve Scarff

Dan McCourt

Bill McBroom

Montana Chess News (MCN) is published by the Montana Chess Association, an affiliate of the U.S. Chess Federation (USCF). Subscription and membership in the MCA is \$12/year regular, \$6/year junior (under 20), \$15 family. First time players who are also new to the USCF shall have their first year's membership fee waived.

**Publishing schedule:**

*Issue 1: January*

*Issue 2: April*

*Issue 3: June*

*Issue 4: September*

*Issue 5: November*

Deadline for submission is ten days before first day of the issue of the month.

**MCA Constitution: New**

During the 2005 MCA business meeting in Great Falls a number of revisions to the MCA Constitution were approved by the membership. The complete revised version is posted on the MCA web page ([www.Montanachess.org](http://www.Montanachess.org)). While members may suggest any items for consideration of the 2006 business meeting, this is the last specific call for still further changes to the Constitution.

President Doulas has asked Bill McBroom to continue as coordinator for proposals. Accordingly, members are invited to send any suggestions to the following address:

William H. McBroom  
2321 Raymond Avenue  
Missoula, MT 59802

In order that proposed changes may be readily understood by the membership, kindly provide the full text of the section for which a modification is being proposed, use strike out to show text to be removed, show proposed new language in bold, and provide a brief rationale for the desired new text. Proposals will be posted verbatim. In order to bring some closure to this process, only proposals received by December 15, 2005 will be on the agenda of the 2006 business meeting. Accordingly, if you have suggestions, please do not delay. During the next business meeting proposals will be entertained seriatim, each being considered a motion requiring a second.

**Grand Prix System**

The annual grand prix cycle shall begin after the Montana Open each year, and conclude with the following year's Montana Open. In any grand prix tournament, all grand prix points shall be issued to the first ten resident MCA finishers with a plus score, regardless of place of finish. Grand prix points shall not be issued to non-resident members. The Secretary/Treasurer shall compute the grand prix points awarded and track the standings, arranging for those standings to be published in the MCA Newsletter throughout the year.

To calculate your Grand Prix points refer to MCA web page <http://www.montanachess.org/main/constitution.php>

**If any MCA event draws 10 or more Montana members, then it qualifies for Grand Prix status.**

**First two top Grand Prix winners are qualified for State Championship**

**UCCC Intercity Invitational  
By Bill McBroom**

Missoula's University-Community Chess Club tried a different type of tournament in August—an intercity invitational (ICI). Several considerations prompted the trial run with this format.

In Missoula, at least, regular club attendance is low at present; the result is that players face the same opponents over and over. One feature of the ICI was that unless absolutely necessary, players from the same city would not be paired. The invitational nature was aimed at diversifying the home base of players while seeking approximately equal numbers from each city.

Cost was another consideration. While high gasoline prices add to the expense of playing in tournaments, the ICI was a one-day affair of three rounds that precluded the need for an over-night stay.

Location was also important and linked to the idea of a single-day format. Helena was chosen because, with the exception of any hardy souls from Billings and other points east, it is an easy trip from Bozeman, Butte, Great Falls, and Missoula.

There was no prize fund; the entry fees were used to pay for the playing site. UCCC took a small loss. Those who showed up were playing for fun and rating points.

The tournament was a qualified success. Seven players from four cities participated. No one had to play an opponent from their home town. There may be another go at this in 2006.

Oh, yes, readers might be interested in the outcome. Helena's Bob Martin won outright with a score of 2 1/2. Romie Carpenter of Missoula and Haluk Beyenal of Bozeman not only drew each other in round three, but they tied for 2-4 with two points each. Ron Erickson of Missoula was the third player in that tie. Mel Drake (Helena), Bill Furdell (Great Falls), and Bill McBroom (Missoula) each had a score of 1. By local standards this was a strong tournament. Two of those seeded in the Closed participated (Beyenal and Martin) and one always on the hunt (Carpenter) played. We hope they found it a good tune up for their October encounter.

**UCCC Intercity Invitational cross table**

Pair #	Player Name	Rnd1	Rnd2	Rnd3	Total points
1	ROBERT A MARTIN	D3	W5	W6	2.5
2	RON ERICKSON	W6	D4	B	2.5
3	ROMIE G CARPENTER	D1	W7	D4	2
4	HALUK BEYENAL	W5	D2	D3	2
5	WILLIAM H MC BROOM	L4	L1	W7	1
6	WILLIAM J FURDELL	L2	B	L1	1
7	MELVIN P DRAKE	B	L3	L5	1

## GAMES FROM UNIVERSITY CHESS CLUB MISSOULA

By Romie Carpenter

(1) Dan McCourt (1600) – Romie  
Carpenter (1805) [B07]

UCCS Club Championship,  
26.04.2005

1.e4 d6 2.d4 Nf6 3.Nc3 g6 4.f4 Bg7

5.e5 Nfd7 6.Nf3 c5 7.e6 fxe6 8.Ng5

Diagram



8...Bxd4 [8...Nf6 9.dxc5 0-0 Was  
also a possibility] 9.Nxe6 Bxc3+  
10.bxc3 Qa5 11.Rb1 Diagram



Threatening 12.Rb5.11...a6 12.Bd2  
b5 13.c4 b4 14.a3 Qxa3 15.Nc7+

Kd8 16.Nxa8 Bb7 17.c3 Nc6

18.cxb4 Nxb4 19.Rb3 Qa4 20.Qb1

a5 21.Qb2 Rf8? Diagram



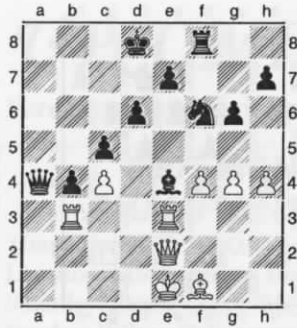
This was pretty much a useless  
move

22.h4 Bxa8 23.Rhh3 Be4? Diagram



Another bad move, just sticking the  
bishop out where it can easily be  
attacked. Black should be preparing  
to advance his a-pawn. 24.Bxb4  
axb4 25.Rhe3 Nf6 26.g4 Qc6  
27.Qe2 Qa4? Diagram

4



Planless maneuvering 28.Qb2 Bc6  
29.g5 Nh5 30.Ra3! Diagram

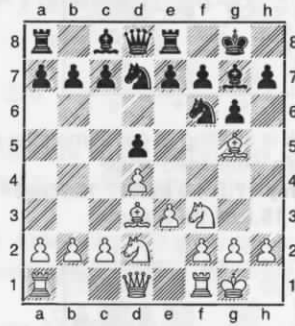


30...Qxa3 31.Rxa3 bxa3 32.Qb8+  
Kd7 33.Bh3+ Rf5 34.Qb3 Nxf4  
35.Bxf5+ gxf5 36.Qxa3 Ng2+ Diagram

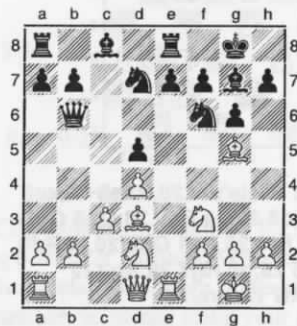


Why not? 37.Kf2 Nxe4 38.Qh3 1-0

(2) McBroom (1605) – McCourt  
(1600) [D03]  
UCCC Club Championship,  
05.04.2005  
1.d4 d5 2.Nf3 Nf6 3.Bg5 Nbd7  
4.Nbd2 g6 5.e3 Bg7 6.Bd3 0-0 7.0-0  
Re8 Diagram

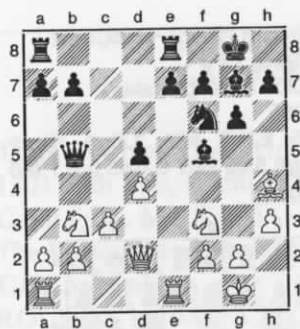


8.c3 c5 9.Re1 cxd4 10.exd4 Qb6  
Diagram

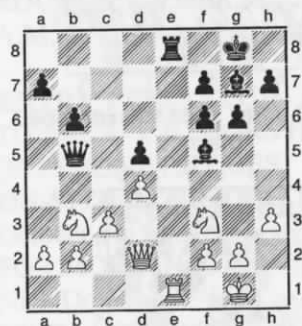


11.Qc2 Nf8 12.h3 Ne6 13.Bh4 Nf4  
14.Nb3 Nxd3 15.Qxd3 Bf5 16.Qd2  
Qb5 Diagram

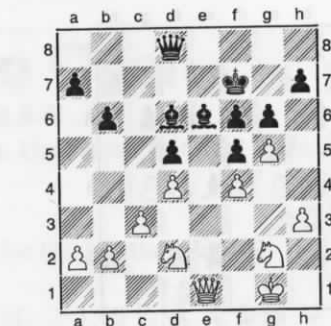
5



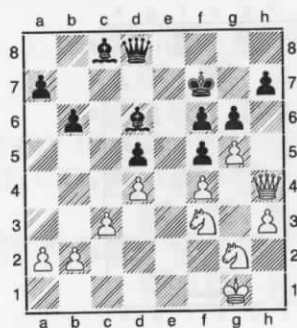
Black is starting to get some play on White's weakened white squares. 17.Bxf6 exf6! 18.Rxe8+ Rxe8 19.Re1 b6 Diagram



Restricts White's N. 20.Rxe8+ Qxe8 21.Qf4 Qd8 22.g4 Be6 23.Qg3 Qc8 24.Nbd2 Bf8 25.Ne1 Qd8 26.f4 Bd6 27.Qf2 f5 28.g5 Kg7 29.Ng2 f6 30.Qe1 Kf7 Diagram



31.Nf3 Bc8 32.Qh4 Diagram



[32.gxf6! gives White e5 for his N] 32...Kg7 33.Qh6+ Kg8 34.Qh4 Be7 35.Qg3 Ba6 1/2-1/2

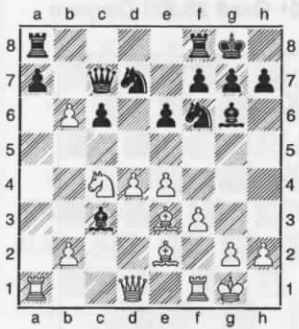
(3) Mike Jensen (1873) - Bill McBroom (1605) [D17] UCCC Club Championship, 03.05.2005

1.d4 d5 2.Nf3 Nf6 3.c4 c6 4.Nc3 dxc4 5.a4 Bf5 6.Ne5 e6 7.f3 Bb4 8.e4 Bg6 9.Be3 Nbd7 Diagram

6



10.Nxc4 0-0 11.Be2 Qc7 12.0-0 b5  
13.axb5 Bxc3 14.b6 Diagram



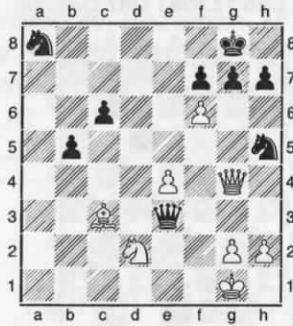
14...axb6 15.bxc3 b5 16.Nd2 Nb6  
17.Qb3 Nh5 18.f4 Diagram



18...Nf6 19.Bf3 Bh5 20.Bxh5 Nxh5  
21.Qd1 Nf6 22.Qf3 Rxa1 23.Rxa1  
Ra8 24.Rxa8+ Nxa8 25.f5 e5  
26.Qg3 exd4 Diagram



The N on a8 really is doing  
something! 27.Bf4 Qd7 28.Be5 Nh5  
29.Qg4 dxc3 30.Bxc3 Qd3 31.f6  
Qe3+ Diagram



32.Kf1 Qf4+ 33.Qxf4 Nxf4 34.fxg7  
Ne6 35.Ke2 Nxg7 36.Kd3 Ne6  
37.Be5 Nb6 ½-½

7

**(4) Sherwood Moore (1639) – Mike**

**Jensen (1873) [B83]**  
 UCCC Club Championship,  
 05.04.2005

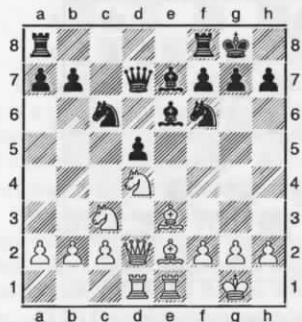
**1.e4 c5 2.Nf3 d6 3.d4 cxd4 4.Nxd4**

**Nf6 5.Nc3 e6 6.Be2 Be7 7.0-0 0-0**

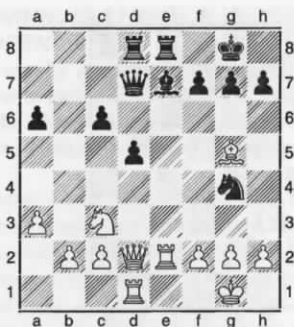
Diagram



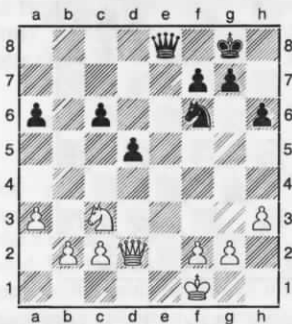
**8.Be3 Nc6 9.Qd2 d5 10.exd5 exd5**  
**11.Rad1 Be6 12.Rfe1 Qd7** Diagram



**13.Bf3 Rad8 14.Bg5 a6 15.a3 Rfe8**  
**16.Re2 Bg4 17.Bxg4 Nxg4 18.Nxc6**  
**bxc6** Diagram



**19.Rde1 Bxg5 20.Qxg5 Rxe2**  
**21.Rxe2 Nf6 22.h3 h6 23.Qd2 Re8**  
**24.Rxe8+ Qxe8 25.Kf1** Diagram



1/2-1/2

**(5) Dan McCourt (1600) – Mike**

**Jensen (1873) [B21]**  
 UCCC Club Championship,  
 12.04.2005

**1.e4 c5 2.f4 Nc6 3.Nf3 g6 4.c3 Bg7**

**5.Be2 e6 6.Na3** Diagram

8

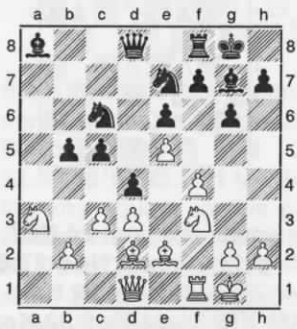




What's going on here? Chessbase is saying "I ain't never seen nothin' like this"! 6...Nge7 7.d3 d5 8.0-0 0-0 9.Bd2 a6 10.Nc2 b5 11.e5 d4 12.a4 Bb7 13.axb5 axb5 14.Rxa8 Bxa8 15.Na3 Diagram



"OK, you want to attack from a 'good' square, I'll defend from a 'better' one"! 19.Nc2 Bd5 20.Qa3 Nac6 21.b4 Nf5 22.Qa6 Qc7 23.Na3 Diagram



15...Qb6 16.cxd4 cxd4 17.Qb3 Rb8 18.Ra1 Na7 Diagram



"How much do I love thee? Let me count the times." 23...Rb6 24.Qa8+ Bf8 25.Rc1 Rb8 26.Qa6 Rb6 27.Qa8 Rb8 28.Qa6 1/2-1/2

**UCCC Intercity Invitational**

**Erickson, Ron – Haluk Beyenal [A05]**

1.Nf3 Nf6 2.g3 g6 3.b4 Bg7 4.Bb2 0-0  
5.Bg2 d6 6.0-0 e5 7.d3 Nc6 8.b5 Ne7  
9.c4 a6 10.a4 axb5 11.axb5 Rxa1  
12.Bxa1 Bd7 13.Nbd2 Ne8 14.Ne1 c6  
15.Qb3 cxb5 16.cxb5 Qb6 17.Nc4  
Qxb5 18.Qxb5 Bxb5 19.Bxb7 Diagram

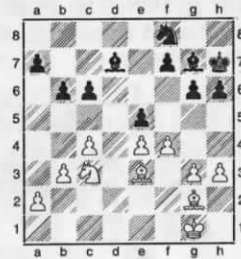


19...Bxc4 black should concentrate on controlling center by playing d5 [19...d5 20.Na3 Bd7] 20.dxc4 Nc7 21.Nc2 Rb8 22.Rb1 Nc6 23.Na3 Na5 24.Be4 Rb3 25.Rxb3 Nxb3 26.Bc3 f5 27.Bg2 e4 28.Bxg7 Kxg7 29.f3 exf3 30.exf3 g5 31.f4 gxf4 32.gxf4 Nd4 33.Kf2 Kf6 34.Ke3 Nde6 35.Nb5 Ne8 36.Bc6 N8g7 37.Nxd6 Nh5 38.Bd7 Nhx4 39.Nb7 Ng6 40.c5 f4+ 41.Ke4 Ng5+ 42.Kd4 Nf3+ 43.Ke4 Ng5+ [43...Nxf2 44.c6 f3 45.Ke3 Ne7 46.Kf2 Nxc6 47.Bxc6] ½-½

**UCCC Intercity Invitational**

**Robert A Martin – Carpenter, Romie G. [E67]**

1.Nf3 Nf6 2.c4 g6 3.g3 Bg7 4.Bg2 0-0 5.0-0 d6 6.d4 Nbd7 7.Nc3 c6 8.Bd2 Qc7 9.Rc1 e5 10.dxe5 Nxe5 11.Nxe5 dxe5 12.Qc2 Rd8 13.e4 h6 14.h3 Nd7 15.Be3 Nf8 16.Rcd1 Be6 17.b3 b6 18.Qc1 Kh7 19.f4 Rxd1 20.Rxd1 Rd8 21.Rxd8 Qxd8 22.Qd2 Qd7 23.Qxd7 Bxd7 Diagram



It is equal position 24.Ne2 Ne6 25.f5 gxf5 26.exf5 Nd4 27.Bxd4 exd4 28.Be4 Be5 29.Kg2 Kg7 30.Kf3 Kf6 31.g4 Kg5 32.Kg2 h5 33.gxh5 Kxh5 34.Ng3+ Bxg3 35.Kxg3 Kg5 36.h4+ Kh6 37.Kg4 f6 38.Kf4 Kh5 39.Kg3 c5 40.Bf3+ ½-½

**UCCC Intercity Invitational  
McBroom, William H. – Martin, Robert  
A. [A08]**

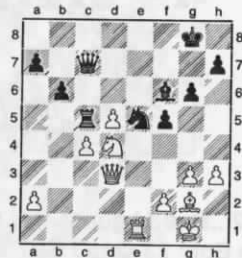
1.e4 e6 2.d3 d5 3.Nd2 Nf6 4.Ngf3 c5  
5.g3 Nc6 6.Bg2 Be7 7.0-0 0-0 8.Re1  
dxe4 9.Nxe4 Nxe4 10.Rxe4 Bf6 11.c3  
e5 12.Re1 Bf5 13.Bf1 Bg4 14.Bg2 Qd7  
15.Be3 b6 16.Qc2 Rad8 17.Rad1 Bf5  
18.Bf1 Qd5 Diagram



Black has open D file and has pressure on d3 where he will attack more 19.Bg2 Bxd3 20.Qa4 Qe6 21.Ng5 Bxg5 22.Bxg5 f6 23.Bc1 e4 24.Rxd3 d3 was the key square in this game 24...Rxd3 25.Be3 Ne5 26.Bxe4 Rd6 27.Qxa7 Rfd8 28.Qa4 Qc4 29.Qxc4+ Nxc4 30.Bc2 Nxe3 31.Rxe3 Rd2 32.Bb3+ Kf8 33.Ba4 Rxb2 34.Re6 b5 35.Rb6 Rxa2 36.Bxb5 Rb2 37.c4 Rdd2 38.Rb8+ Kf7 39.Rb7+ Kg6 40.Be8+ Kh6 41.Rxb2 Rxb2 42.Bb5 Kg5 43.Kg2 Kf5 44.Bc6 Ke5 45.Bd5 Kd4 46.Kf3 Rc2 47.Bg8 Rxc4 48.Bxh7 Rc1 49.Ke2 c4 50.Kd2 Rh1 51.h4 Rh2 52.Ke2 g5 53.Kf1 gxh4 54.g4 Rh1+ 55.Kg2 Rc1 56.Bf5 c3 57.Kh3 c2 58.Kxh4 0-1

**UCCC Intercity Invitational  
Beyenal, Haluk – Carpenter,  
Romie [E68]**

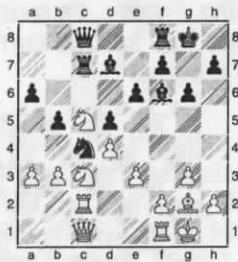
1.Nf3 Nf6 2.d4 g6 3.g3 Bg7  
4.Bg2 0-0 5.c4 d6 6.0-0 Nbd7  
7.Nc3 c6 8.e4 e5 9.dxe5 dxe5  
10.Be3 Qe7 11.h3 Rd8 12.Qc2  
Nc5 13.Rad1 Nfd7 14.Rd2 b6  
15.b4 Ne6 16.b5 Bb7 17.Rfd1  
Ndc5 18.bxc6 Bxc6 19.Nd5 Qb7  
20.Re1 Rac8 21.Nh2 Rd7 22.Ng4  
Bxd5 23.exd5 Nd4 24.Bxd4  
exd4 25.Rde2 Qb8 26.Re7 f5  
27.Nh2 Bf6 28.Rxd7 Nxd7  
29.Nf3 Rc5 30.Qd3 Qc7 31.Nxd4  
Ne5 Diagram



32.Rxe5 ?? White loses all winning changes [32.Qe2 Better way for white] 32...Qxe5 33.Ne6 Rc8 34.d6 Kh8 35.d7 Qxe6 36.dxc8Q+ Qxc8 37.Bd5 1/2-1/2

**UCCC Intercity Invitational  
Martin, Robert A. – Bill  
Furdell [A11]**

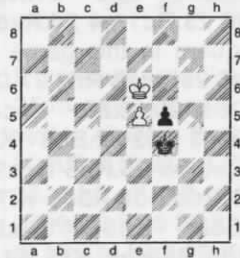
1.Nf3 d5 2.c4 c6 3.cxd5  
 cxd5 4.g3 Nf6 5.Bg2 e6 6.0-0  
 Be7 7.d4 0-0 8.Nc3 Bd7  
 9.a3 Nc6 10.Bd2 a6 11.Rc1  
 Rb8 12.Bf4 Rc8 13.Qd2 Na5  
 14.Rc2 Nc4 15.Qc1 b5  
 16.Ne1 Nh5 17.Nd3 Nxf4  
 18.Nxf4 Bf6 19.e3 g6  
 20.Nd3 Rc7 21.Nc5 Qc8  
 22.b3 Diagram



22...Nxa3 I guess this is a gift  
 to Bob! 23.Qxa3 Be7 24.b4  
 Ra7 25.Rfc1 Qc6 26.Qb3  
 Bxc5 27.dxc5 Qc7 28.Ne2  
 Bc6 29.Nd4 Rd8 30.Ra1 a5  
 31.bxa5 Rxa5 32.Rxa5 Qxa5  
 33.Nxc6 Qa1+ 34.Bf1 Ra8  
 35.Qxb5 Qd1 36.Qe2 Qb1  
 37.Rb2 Qc1 38.Qc2 Qa1  
 39.Rb8+ Rxb8 40.Nxb8 d4  
 41.exd4 Qxd4 42.c6 1-0

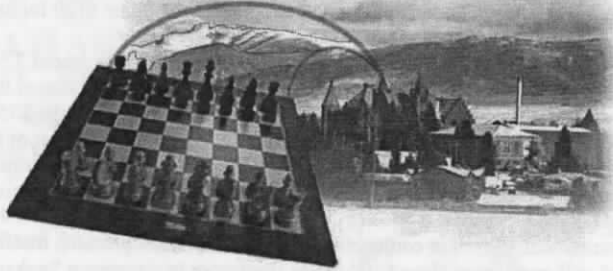
**UCCC Intercity Invitational  
Haluk Beyenal – William H McBroom  
[D11]**

1.d4 d5 2.Nf3 Nf6 3.c4 c6 4.g3 Bf5  
 5.Nbd2 e6 6.Bg2 Nbd7 7.0-0 Bd6 8.b3  
 0-0 9.Bb2 Ne4 10.Nh4 Nxd2 11.Nxf5  
 Nxf1 12.Nxd6 Nxc3 13.hxc3 Rb8  
 14.e4 dxe4 15.Nxe4 f5 16.Ba3 fxe4  
 17.Bxf8 Qxf8 18.Bxe4 Nf6 19.Bg2 h5  
 20.Qe2 Re8 21.Re1 Qd6 22.Qe5 Qxe5  
 23.dxe5 Ng4 24.f3 Nh6 25.Rd1 Kf7  
 26.Kf2 Ke7 27.Bh3 Nf7 28.f4 Rd8  
 29.Rxd8 Nxd8 30.Bg2 Nf7 31.Bf3 g6  
 32.Ke3 Nh6 33.Be4 Kf7 34.b4 Nf5+  
 35.Bxf5 gxf5 36.a4 b6 37.Kd4 Ke7  
 38.c5 Kd7 39.cxb6 axb6 40.a5 Kc7  
 41.axb6+ Kxb6 42.Kc4 Kb7 43.b5 Kb6  
 44.bxc6 Kxc6 45.Kd4 Kb5 46.Ke3 Kc4  
 47.Kf3 Kd4 48.Kg2 Ke3 49.Kh3 Kf3  
 50.Kh4 Kg2 51.Kxh5 Kxg3 52.Kg5 Kf3  
 53.Kf6 Kxf4 54.Kxe6



54...Ke4 This is the only place Bill did a  
 mistake. Kg4 is equal [54...Kg4 55.Kd7  
 f4 56.e6 f3 57.e7 f2 58.e8Q f1Q equal]  
 55.Kd6 f4 56.e6 f3 57.e7 f2 58.e8Q+  
 1-0

## UNIVERSITY CHESS CLUB



### BOZEMAN

2005-2006 school year

Meets every Wednesday at 7:00 p.m.

NW corner of Union Market dining area, Strand Union Building, Montana State University, Bozeman, MT

**COME AND MEET BOZEMAN'S FINEST CHESS PLAYERS  
JUNIORS WELCOME!! NO MEMBERSHIP FEES, OPEN TO  
PUBLIC**

### Electric City Checkmates Chess Club

Meets every Monday evenings at  
6:30

West gate Mall

No entry fees; refreshments  
served. Bring your equipment if  
you have it

Info: 1-406-717-5968, e-mail:  
kirk123L@aol.com

### *71<sup>st</sup> Montana Open*

Scheduled

April 1-2, 2006 in  
Helena at the Red  
Lion Colonial Hotel

**CONGRATULATIONS TO NICK DOULAS WINNING \$75 PRIZE UNDER 1400  
IN AUNTIES OPEN**

The second Aunties Open in Spokane was won by Paul Bartron and John Julian, each of whom finished at 4-1 after reaching a draw in their fifth round game. Bartron won his morning match against Chris Kalina while Julian defeated defending champion Pat Herbers to set up the championship showdown. Each took home \$100 for his efforts.

Herbers shared the under 2000 prize with Mark Havrilla. Each scored 3.5 and won \$37.50 in splitting the \$75 prize. Adam Attwood and Alex Chow shared the \$75 under 1700 prize with 3.0 scores. **Nick Doulas** of Great Falls, MT, won the \$75 prize in the under 1400 category. Young Alex Chow turned out to be the big winner of the day, pocketing an additional \$75 for having the biggest upset. That victory (a margin of 267 points between opponents) was the only upset victory of the entire tourney; there were nine upset draws.

The tournament, played in conjunction with the City Championship match, drew 27 entries and was once again played at Aunties Bookstore in downtown Spokane. Seven of the players hailed from Montana, with Haluk Beyenal of Bozeman and Nick Doulas of Great Falls traveling the furthest to the tourney. The cross table for the event can be seen on the USCF web page (<http://www.uschess.org/>).

**LAST MINUTE NEWS**

**Eastern Idaho Open  
Report by Stephen Tamang**

The tournament was well organized. I had to take a last round bye to make it home at a reasonable hour, so I don't know how it ended. The tournament drew about 20 players. Greg Nowak was in position to win the open section going into round 5. He had 3 wins and a half-point bye. The closest rated player to Nowak was a 12-year-old class-A protégée. Nowak defeated him in round 4.

I had the pleasure of getting to play Nowak round 2 for the Montana championship of Idaho as we were the only two players from the treasure state. I finished with 2 points and a bye. I assume Nowak finished with 4.5, winning the open section and about \$180.00 in prize money. Also, the Thunderbird hotel was a great place to stay - 42.00 for a nice room and a block from the playing site.

# UPCOMING EVENTS

For newest information and updates visit [www.montanachess.org](http://www.montanachess.org)

## 2005 MONTANA TRIPLE HEADER CHAMPIONSHIPS, SEPTEMBER 24-25

Time Control: G/30; G/5; G/15

Location: MSU campus, Bozeman, MT

Saturday: Strand Union Bldg., rooms 275 & 276

Sunday: Wilson Hall, rooms 1-153 & 1-154

Description: Three Montana championship titles are up for grabs! Play in one, two, or all three events. Trophies awarded to top Montana resident in each event.

EF: \$6 per event IF RECEIVED BY 9/21/05. Otherwise \$10 per event, no exceptions, no phone entries. Juniors (19 & under) half price. Checks payable to UCC. Mail to:

University Chess Club, SUB Box 23, Bozeman, MT 59717

Action Championship, G/30, quick rated, Sat. 9/24

Registration: 9:30 - 10:00 a.m.

Rounds: 10:15, 11:25, 1:30, 2:40, 3:50

Speed Championship, G/5, unrated, Sat. 9/24

Registration: 6:30 - 7:00 p.m.

Rounds: 7:15, 7:35, 7:55, 8:15, 8:35

Quick Championship, G/15, quick rated, Sun. 9/25

Registration: 9:30 - 10:00 a.m.

Rounds: 10:15, 10:55, 11:35, 1:05, 1:45

NOTE: MCA membership required. USCF membership required for rated events. Each event is 5 round Swiss using computer pairings. Wheelchair accessible, no smoking, no computers. Time-delay clocks are preferred equipment; UCC will provide a limited number, so please bring your own if possible. Contact: Steve Scarff, [steve@bridgeband.com](mailto:steve@bridgeband.com)

## The MCA CLOSED CHAMPIONSHIP

OCTOBER 8-9

Rooms 104 and 105 of the classroom building (Sullivan Hall) The University of Great Falls. Open for qualifiers.

15

## 2005 Barto Open

OCTOBER 8-9

**Time Control:** G/45, G/15, **Location:** University of Great Falls,  
1301 20th St S, Room 104, 105  
Great Falls, MT 59405

The Barto Open is the satellite event for the Montana Open.

### G/45 Saturday

**ROUNDS:** 1: 10:00 A.M., 2: 11:30 A.M., 3: 1:00 P.M., 4: 2:30  
P.M., 5: 4:00 P.M. (OR ASAP)

### G/15 Sunday

**ROUNDS:** 1: 9:00 A.M., 2: 9:30 A.M., 3: 10:00 A.M., 4: 10:30  
A.M., 5: 11:00 A.M. (OR ASAP),

**ENTRY FEE:** \* \$25, IN ADVANCE (BY 10/07/2004, CHECKS  
TO "MCA"), JUNIORS HALF PRICE, C/O. AT THE DOOR \$30  
(NO PHONE ENTRIES)

**ON-SITE REGISTRATION:** 9:30-10:00 A.M. SATURDAY,  
October 8th 2004

FOR MORE INFORMATION:

Nick Doulas 899-4664

**NOTE:** EQUIPMENT NOT PROVIDED, NO-SMOKING VENUE

**Contact:** Nick Doulas, 523 27th St S, Great Falls, MT 59405

### 2005 CHINOOK OPEN, OCTOBER 8-9

Time Control: G/90, Location: Countryside Village Clubhouse, 805 7th Street NE, #212, Great Falls, MT 59404. Description: Entry Fee: \$25.00 if received by October 5, \$30.00 after October 5. Residents of Cascade County are required to pay the \$5.00 GFCC Membership Fee. USCF Membership required. 5 rounds, Swiss System, Game/90 minutes. \$550.00 Prize Fund based on 22 participants. Open Section: \$200.00 1st; \$100.00 2nd; \$50.00 3rd; \$25.00 4th. Reserve Section: \$100.00 1st; \$50.00 2nd; \$25.00 3rd. Open Section will not include un-rated participants, Reserve Section for those rated 1699 and lower, and un-rated. Ratings determined by the most current USCF Ratings Supplement as of Oct 1, 2005. Tournament Director reserves the right to modify Sectional formats pending participation. No Smoking, No Computers, Computer Pairings may be employed. Contact: Send entry fees to Douglas Hansen, 3805 7th Street NE, #59, Great Falls, MT 59404. No phone entries

18



# THE 2005 TURKEY OPEN

NOVEMBER 5 - 6

WHERE: **BEST WESTERN GRANT CREEK INN**, .25 MILES NORTH OF I-90 ON RESERVE ST., EXIT 101 (DOUBLE OCCUPANCY ROOMS FOR \$75.65 BEING HELD UNTIL OCT. 25; MENTION UCCC-TURKEY OPEN - HOT BREAKFAST COMPLIMENTARY FOR GUESTS)

**FORMAT:** 5-ROUND SWISS

**TIME CONTROLS** (ALL SUDDEN DEATH): RDS 1 AND 2 = G in 90, RDS 3,4,& 5 = G in 120

**ROUNDS:** 10:30 A.M., 2:00 P.M., 6:30 P.M. NOVEMBER 5  
9:00 A.M., 1:30 P.M.(OR ASAP), NOVEMBER 6

**ENTRY FEE:** \* \$25, IN ADVANCE (BY NOVEMBER 3, CHECKS TO "UCCC"), JUNIORS HALF PRICE, C/O

WILLIAM H. MCBROOM  
2321 RAYMOND AVENUE  
MISSOULA, MT 59802

\* AT THE DOOR \$30 (NO PHONE ENTRIES)

ON-SITE REGISTRATION: 9:30-10:00 A.M. SATURDAY, NOVEMBER 5

PRIZES (BASED ON 30 PAID ADULTS):

1st=\$120, 2nd=\$90, 3rd=\$70

1600-1799=\$50

1400-1599=\$40

UNDER 1400=\$30

UPSET=\$20 (both players must have established ratings)

FOR MORE INFORMATION:

WILLIAM H. MCBROOM @ 406.728.4654

NOTE: EQUIPMENT NOT PROVIDED, NO-SMOKING VENUE

17

**YULETIDE OPEN**

DECEMBER 3

**Location:** Montana State University campus, Bozeman

**Description:**5-SS  
details coming soon

**Contact:** Steve Scarff, [steve@bridgeband.com](mailto:steve@bridgeband.com)

**MIDWINTER OPEN**

FEBRUARY 4

**Time Control:**

**Location:** Montana State University campus, Bozeman

**Description:**5-SS  
details coming soon

**Contact:** Steve Scarff, [steve@bridgeband.com](mailto:steve@bridgeband.com)

**71<sup>st</sup> Montana Open**

Scheduled

April 1-2, 2006 in Helena at the Red Lion Colonial Hotel

## **UPCOMING EVENTS**

**2005 MONTANA TRIPLE HEADER CHAMPIONSHIPS**  
SEPTEMBER 24-25, MSU campus, Bozeman, MT

**The MCA CLOSED CHAMPIONSHIP AND BARTO  
MEMORIAL**  
OCTOBER 8-9, The University of Great Falls

**2005 CHINOOK OPEN**  
OCTOBER 8-9, Great Falls

**THE 2005 TURKEY OPEN**  
NOVEMBER 5-6, Best Western Grant Creek Inn., Missoula

**YULETIDE OPEN**  
DECEMBER 3, MSU campus, Bozeman, MT

**MIDWINTER OPEN**  
FEBRUARY 4, , MSU campus, Bozeman, MT

**71<sup>st</sup> Montana Open**  
APRIL 1-2, 2006 in Helena at the Red Lion Colonial Hotel