

Editor - Les Brennan PO Box 2404
Colstrip, MT 59323 (406) 748-2154

MONTANA CHESS NEWS

Montana Chess News is published by the MONTANA CHESS ASSOCIATION, an affiliate of the U. S. CHESS FEDERATION Promoting Chess Excellence by Education and Competition Membership / Subscription = \$6 / yr regular, \$3 / yr junior

NOWAK BACK-TO-BACK!

MONTANA CHESS CHAMPION RETAINS TITLE

GISSELBECK & CARPENTER
LEAD UCCC THIRD SUMMER OPEN

JOHANSSON WINS BOBCAT

CARPENTER @ UCCC FIRST FALL OPEN

SUITS AND MATOUS WINNERS AT CHINOOK

MCA GRAND PRIX POINT STANDINGS


As of the Chinook Open 10/10/93

- Johansson...26.48
- Duke..... 14.139
- Skovron.....12.783
- Nowak.....11.14
- Suits.....10.76
- D. McCourt..10.03
- Thompson...7.838
- Quimby.....7.838
- Long.....7.57

Tournament record p.3

"THE CLOSED"

All the games and title retentive details p.8



	NAME	RTG	1	2	3	4	5	6	TOT
1	NOWAK	2202		0.5	0.5	1	1	1	4
2	MAYER	2088	0.5		0.5	0.5	1	1	3.5
3	JENSEN	1951	0.5	0.5		0	1	1	3
4	THOMPSON	2100	0	0.5	1		0	0.5	2
5	LOY	1923	0	0	0	1		0.5	1.5
6	MOTTA	2014	0	0	0	0.5	0.5		1

UCCC 3rd SUMMER OPEN

BY ROMIE CARPENTER

	NAME	RTG	1	2	3	TOT
1	Carpenter, Romie G.	1800	W 4	W 6	L 2	2
2	Gisselbeck, Donald	1280	U	W 7	W 1	2
3	Jensen, Michael	1951	L 6	D 4	W 7	1.5
4	Moore, Sherwood	1559	L 1	D 3	W 6	1.5
5	Nowak, Gregory W.	2202	W 7	U	U	1
6	Duke, David A	1628	W 3	L 1	L 4	1
7	McBroom, William	1641	L 5	L 2	L 3	0

A couple of the games are worth noting: In the Duke-Jensen game, David sac'ed a piece for a passed pawn and then proceeded to drive it home. My game against Gisselbeck is a monument to why you shouldn't weaken the squares around your king with the idea that "He's only 1280; I can defend!?"



Romie Carpenter thinking "He's only 1280"

BOBCAT OPEN

Johansson does it again! I overheard Nowak saying that he thought Jan should be playing in the "Closed" (A reference to Jan's strength, as evidenced by his tendency to win tournaments). Given Jan's current stockpile of grand prix points, and with a predictably strong showing in the 94 State Open, one could extrapolate Jan into next year's Closed with confidence. - Ed.

	NAME	RTG	R1	R2	R3	R4	TOT
1	Johansson, Jan	2030	W 6	W 3	W 7	D 4	3.5
2	Matous, Ronald	1817	W 11	L 7	W 5	W 8	3
3	Long, Michael	1809	W 12	L 1	W 11	W 7	3
4	Brennan, Les	1752	W 13	D 5	W 8	D 1	3
5	Skovron, James	1827	W 10	D 4	L 2	B---	2.5
6	Duke, David	1628	L 1	W 14	W 13	D 10	2.5
7	Stubberud, Kip	2039	W 9	W 2	L 1	L 3	2
8	Limesand, Kip	1750	W 14	W 9	L 4	L 2	2
9	Scarff, Steven	1735	L 7	L 8	B---	W 13	2
10	Price, Donald	1327	L 5	H---	W 12	D 6	2
11	Mayer, Eriel	1126	L 2	B---	L 3	L 12	1
12	Smith, Kevin	UNR	L 3	L 13	L 10	W 11	1
13	Stauber, Craig	UNR	L 4	W 12	L 6	L 9	1
14	Kozubski, Marie	UNR	L 8	L 6	U---	U---	0



Jan Johansson home-cooking



Steve Scarff directing

UCCC FIRST FALL OPEN

	NAME	RTG	1	2	3	TOT
1	Carpenter, Romie G.	1800	W 6	D 3	W 8	2.5
2	Nowak, Greg	2202	W 4	W 5	U---	2
3	Erickson, Ron	1744	W 7	D 1	D 5	2
4	Moore, Sherwood	1559	L 2	W 9	W 6	2
5	McBroom, William	1641	W 9	L 2	D 3	1.5
6	Gray, Richard J.	1493	L 1	B---	L 4	1
7	Gisselbeck, Don	1280	L 3	L 8	B---	1
8	Shughart, David W	1800	U---	W 7	L 1	1
9	Calger, Stephen	UNR	L 5	L 4	U---	0



CHESS IN MONTANA



Lyle Petersen Orangutaning



Dan McCourt laughing



Ron Erickson cogitating

THE CHINOOK OPEN

BY DOUG HANSEN

	NAME	RTG	R1	R2	R3	R4	R5	TOT
1	Suits, Thad	1956	W 7	W 9	W 2	D 3	D 4	4
2	Matous, Ronald A	1819	W10	W 6	L 1	W 5	W 3	4
3	Erickson, Ron	1744	W13	D 4	W 6	D 1	L 2	3
4	Skovron, James J	1827	W 5	D 3	L 9	W 8	D 1	3
5	Hansen, Douglas J	1670	L 4	W11	W 7	L 2	W10	3
6	Goplen, Arman D	1657	W12	L 2	L 3	W13	W 9	3
7	McBroom, William	1655	L 1	W13	L 5	B--	W11	3
8	Bridges, Travis	1404	L 9	B--	W11	L 4	W12	3
9	Carpenter, Romie G	1800	W 8	L 1	W 4	D10	L 6	2.5
10	Duke, David A	1635	L 2	W12	B--	D 9	L 5	2.5
11	Smith, Kevin M	1190	H--	L 5	L 8	W12	L 7	1.5
12	Luther, Larry W	UNR	L 6	L10	W13	L11	L 8	1
13	Douglas, Nick J	UNR	L 3	L 7	L12	L 6	B--	1

Also, special thanks to John Barto for his support and encouragement. Thanks to Thad Suits for assistance in directing the tournament, and thanks to Jim for the coffee and donuts.

- Doug Hansen

We had a satisfying Chinook Open tournament. Though the turnout was disappointingly low (13), we received two new USCF members. Nine of the thirteen participants received prize money. The projected \$400.00 prize fund (based on 20 registrants) was reduced to 75% of \$375.00. The \$25 Biggest Upset prize was dropped by permission of the field.

Thad Suits and Ron Matous split first and second place.

Ron Erickson and Jim Skovron shared first division, first and second place.

Doug Hansen, Arman Goplen and Bill McBroom shared second division, first and second place.

Travis Bridges took third division, first place, and Kevin Smith took second place in the third division.

Some faces at the Bobcat Open

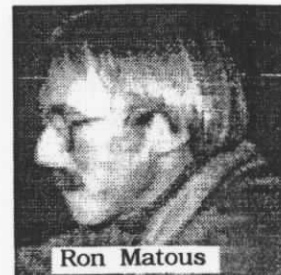
MCA GRAND PRIX

1993

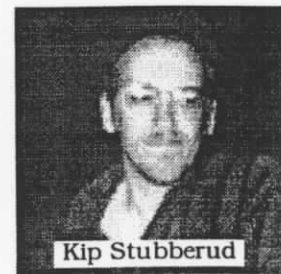
TOURNAMENT RECORD

1994

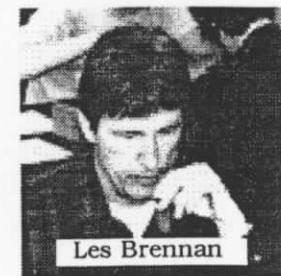
	NAME	MIDSU	PRAIRI	BOBC	CHIN	TURK	TOTAL
1	C =	1.114	1.1527	1.113	1.076		
2	Rounds	5	4	4	5		
3	Nowak	11.14					11.14
4	McCourt	10.026					10.026
5	Johansson	8.35	9.221	8.906			26.477
6	Duke	8.35		5.789			14.139
7	Thompson		7.838				7.838
8	Quimby		7.838				7.838
9	Z. Mayer		6.455				6.455
10	Long			7.57			7.57
11	Brennan			7.57			7.57
12	Skovron			5.789	6.994		12.783
13	Suits				10.76		10.76
14	Erickson				6.994		6.994
15	Hansen				6.994		6.994
16	Goplen				6.994		6.994
17	McBroom				6.994		6.994
18	Bridges				6.994		6.994



Ron Matous



Kip Stubberud



Les Brennan

RECENT GAMES

Duke 1628 Jensen 1951
 UCCC Third Summer Open
 8/5/93 Round 1
 English Opening

1. c4 g6 2. Nc3 Bg7 3. d4 d6 4. Nf3 Nf6 5. e4 O-O 6. Be3 Ng4 7. Bg5 h6 8. Bh4 Nc6 9. h3 Nf6 10. d5 Ne5 11. Ne5 de5 12. Bf6 ef6 13. g4 Qe7 14. Qd2 a6 15. Be2 Bd7 16. Qe3 Qb4 17. O-O Rab8 18. a3 Qb3 19. Nd1 Ba4 20. Nc3 Bd7 21. Rfb1 f5 22. c5 fe4 23. Qe4 f5 24. Bc4 Qc3



25. d6!! Kh8 26. bc3 fe4 27. dc7 Rbc8 28. Rb7 Rf6 29. Rd1 Bc6 30. Rb8 Rff8 31. Rc8 Black resigns.

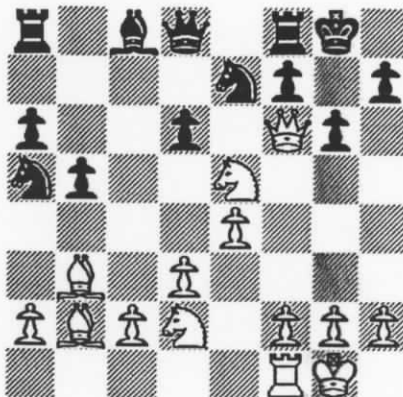
McBroom 1641 Gisselbeck 1280
 UCCC Third Summer Open
 8/12/93 Round 2
 Torre Attack

1. d4 d5 2. Nf3 Nf6 3. Bg5 Nbd7 4. e3 h6 5. Bf6 Nf6 6. Bd3 e6 7. Nbd2 Bd6 8. O-O O-O 9. c4 b6 10. Rc1 c5 11. Nb3 Qc7 12. cd5 ed5 13. dc5 bc5 14. Nc5 Qb6 15. Nb3 Be6 16. Qe2 Rac8 17. Nbd4 Bd7 18. Ba6 Rc5 19. Rc5 Qc5 20. Nb3 Qb6 21. Rc1 Qb8 22. h3 Bc8 23. Bd3 Nd7 24. Nbd4 Nc5 25. Bb1 Na4 26. Qc2 g6 27. Qa4 Qb2 28. Qb3?? Qc1 Mate.

Gisselbeck 1280 Carpenter 1800
 UCCC Third Summer Open
 8/19/93 Round 3
 Sicilian Defense

- next column

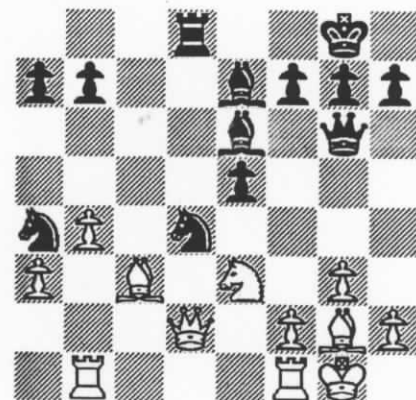
1. e4 c5 2. Nf3 Nc6 3. Bb5 g6 4. O-O Bg7 5. d3 e6 6. Be3 Nge7 7. Bc5 Bb2 8. Nbd2 Ba1 9. Qa1 O-O 10. Qf6 d6 11. Ba3 a6 12. Bb2! e5 13. Bc4 b5 14. Bb3 Na5 15. Nxe5!!



Nec6 16. Bf7 Rf7 17. Qf7 Kh8 18. Nc6 Mate. Very nice finish!

Johansson 2031 Duke 1621
 Bobcat Open
 9/18/93 Round 1
 English Opening
 Annotations by Jan Johansson

1. c4 Of course I had prepared myself for everything, including 1.b4 and Mayer's 1.g4 (in case somebody else had gotten contaminated), everything but the English! Nf6 2. Nc3 e5 3. Nf3 d6 4. g3 c5 I decided myself for something homemade; to be sure to get out of the book right away! I played both e5 and c5. 5. Bg2 Be7 6. O-O O-O 7. Ne1 Nc6 8. Nc2 Be6 9. d3 David has treated the opening in a very passive way, but now Nd5 is necessary to keep me from playing d5. I gave him one more chance to play Nd5, but after that, no mercy. Qd7 10. Rb1 d5 11. cd5 Nd5 12. a3 Rfd8 13. Ne3 Nb6 14. Bd2? Loses a pawn. 14.b3 was necessary (followed by Bb2 to complete the development). 14...c4! 15. b4 cd3 16. ed3 Qd3 17. Be1 Qg6 18. Qc1 Rac8 19. Bd2 Nd4 20. Qb2 Rc3! 21. Bc3 Na4 22. Qd2?



Hoping for 22...Nf3+? 23. Bxf3 Rxd2 24. Bxd2 which would give David two rooks for the queen.

22...Nxc3 and David resigned, since it threatens both Nxb1 and Nf3+, and of course not 23.Qxc3? Ne2+.

Stubberud 2039 Scarff 1735
 Bobcat Open
 9/18/93 Round 1
 Nimzo-Indian Defense

1. d4 Nf6 2. c4 e6 3. Nc3 Bb4 4. e3 c5 5. Bd3 Nc6 6. Ne2 Qb6 7. a3 Bc3 8. bc3 O-O 9. Rb1 Qc7 10. e4 d6 11. O-O b6 12. f4 Bb7 13. d5 Ne7 14. Ng3 Rfd8 15. Nh5 Ne8 16. f5 e5 17. Qg4 Bc8 18. Bh6 g6 19. Qg5 Kh8 20. Nf6 Ng7 (diagram)



21. Bxg7+ Kxg7 22. Nh5+ Kf8 23. Qh6+ Black resigns

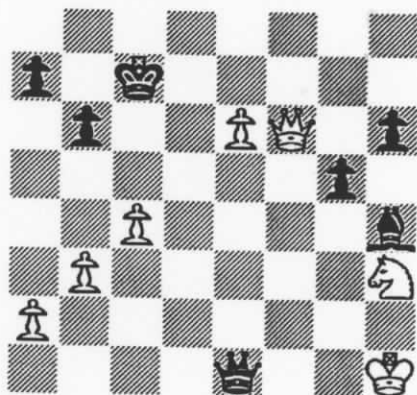
Johansson 2031 Long 1809
 Bobcat Open
 9/18/93 Round 2
 French Defense
 Annotations by Jan Johansson

1. e4 e6 (Avoiding my pet line 1.
 2. d3 d5 3. Nd2 Nf6 4. g3 de4 5. de4
 Nbd7 6. Bg2 Rb8 7. Ngf3 b6
 8. O-O Bb7 (I was afraid of 8...Nc5
 9.Re1 Ba6 threatening Nxe4). 9.
 Re1 Be7 10. Qe2 c5 11. b3 O-
 O 12. Bb2 Qc7 13. c4 Rfd8
 14. e5! (This gives me a clear
 advantage in space and a cramped
 position for Michael, but there is still
 no weakness in his position.) Ne8
 15. Ne4 h6 16. h4 Nf8 17.
 Rad1 Rd1 18. Rd1 Rd8 19.
 Rd8 Qd8 20. Nh2 Qc7 21.
 Ng4 Nd7 22. f4 Kf8 23. Ngf2
 Qd8 24. Qh5 f5 25. Ng5 Bg5
 26. Bb7 Be7 27. g4 Bh4 28.



Nh3? After this serious blunder my
 good position quickly disappears.
 Correct was 28.gxf5! Bxf2+ 29.Kxf2
 Qe7 (29...exf5? 30.Bd5! Qe7
 31.Qxf5+ and mate in the next
 move) 30.fxe6 Qxe6 31.Bd5 Qe7
 32.Qf5+ and mate in the next move.
 (29...Nc7 is not much better:
 30.fxe6 Nxe6 31.Bd5 Ke7
 [31...Qe7 32.Qf5+ winning the
 knight] 32.Bxe6 Kxe6 33.Qg6+ Kd7
 34.Qxg7+ winning). fg4 29. Qg4
 Qe7 30. Bc6 At this moment I had
 only a couple of minutes left for the
 next ten moves, so I had to move
 fast. Michael probably had one hour

left still. g5 31. f5 Nb8 32. Be4
 ef5 33. Bf5 Nc6 34. Bg6 Nd4
 35. Bd4 cd4 36. Qd4 Qe6 37.
 Be8 Ke8 38. Kg2 Qc6 39.
 Qd5 Qd7 I am pretty sure that
 Michael would have had at least a
 draw after 39...Qxd5 40.cxd5, but
 because I was under terrible time
 pressure he probably hoped
 for 39...Qd7 40.Qxd7+ Kxd7 41.Kf3
 Ke6 42.Ke4 Bg3 and he wins my
 pawn on e5 and probably the game.
 I saw this, so I played: 40.
 Qg8+(finally I had made 40 moves)
 Ke7 41. Qg7 Kd8 42. Qf6 Kc7
 43. e6 Qd2 44. Kh1 Qe1 Is it
 now Michael's turn to miss the
 winning move? After the game,



Michael said he thought 44...Bg3
 was a killer. Is it? After 45.Qf7+!
 what does black have? If 45...Kc6?
 then 46.Qf3+ and 47.Qxg3. If
 45...Kd6? then 46.Qd7+ and
 47.Qxd2. If 45.Kd8? 46.e7+
 winning. If 45...Kb8 or Kc8 then
 46.Qf8+ and the black king has to
 return to c7. Even 46...Qd8? loses
 because of 47.e7! In summary: As
 long as the white queen checks on
 f7 and f8 the black king can't enter
 b7, c6 or d6, which means that black
 can't escape perpetual check! 45.
 Ng1 Qe4 46. Kh2 Qf4 There
 goes Michael's last chance. He
 must've overlooked my 48th move
 and thought that he could capture
 my pawn on e6. 47. Qf4 gf4 48.
 Kh3! Wins the necessary tempo for
 the king to get to the protection of
 the e6-pawn just in time. Bg5 49.
 Kg4 Kd6 50. Kf5 50...a6 If

Michael had seen that he was
 fighting for a draw, he would
 probably have tried 50...Kc5 51.Nf3
 Be7 52.a3 a5 with the idea of a5-
 a4. 51. Nf3 Ke7 52. b4 Kd6
 53. c5 bc5 54. bc5 Ke7
 (54...Kxc5? 55.Nxg5) 55. a4 a5
 56. Ne5 Ke8 57. c6 Kd8 (Loses
 immediately, 57...Bd8 is more
 stubborn) 58. Nf7 Kc7 59. Ng5
 hg5 60. e7 and Michael resigned.

Scarff 1735 Limesand 1750
 Bobcat Open
 9/18/93 Round 2
 Pirc Defense

1. d4 d6 2. e4 Nf6 3. Nc3 g6 4. f4
 Bg7 5. Bc4 O-O 6. h3 a6 7. Nf3 b5
 8. Bd3 Bb7 9. e5 Nd5 10. Bd2 c5
 11. Ne4 cd4 12. Qe2 de5 13. fe5
 Nc6 14. Nc5 Qc7 15. O-O-O Ne5 16.
 Ne5 Be5 17. Nb7 Nf4 18. Bf4 Bf4
 19. Kb1 Be3 20. Qf3 e6 21. Be4 f5
 22. Bc6 Rac8 23. Nd6 Qd6 24. Qe3
 Qc6 25. Qb3 Rfd8 26. Rhe1 Kf7 27.
 Rd2 Rd5 28. Rde2 Re8 29. Kc1 Kf6
 30. g4 f4 31. h4 e5 32. Qd3 Qc4 33.
 g5 Kg7 34. Qf3 Qa2 35. h5 Qa1 36.
 Kd2 Qa5 37. Kd3 b4 38. Ke4 d3 39.
 cd3 Rd4 Mate.

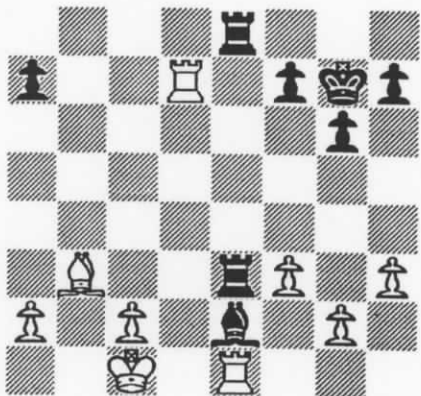
Skovron 1827 Matous 1817
 Bobcat Open
 9/19/93 Round 3
 English Opening

1. Nf3 c5 2. c4 Nf6 3. Nc3 e6 4. e3
 d5 5. d4 cd4 6. ed4 Nc6 7. Be2 Be7
 8. O-O O-O 9. a3 a6 10. Bg5 dc4 11.
 Bc4 b5 12. Ba2 Bb7 13. b4 h6 14.
 Bh4 Rc8 15. Rc1 Rc7 16. Rc2 Rd7
 17. Rd2 g5 18. d5 ed5 19. Bg3 d4
 20. Qb1! Kg7 21. Ne2 Qa8 22. Ned4
 Nd4 23. Rd4 Bf3 24. Rd7 Nd7 25.
 gf3 Qf3 26. Re1 Bf6 27. Re3 Qc6
 28. Qd3 Nb6 29. Bb1 Rh8 30. Re1
 Nc4 31. Qf5 Nd2! 32. Re3 Qc1+
 White resigns.

Long 1809 Stubberud 2039
 Bobcat Open
 9/19/93 Round 4
 Sicilian Defense
 Annotations by Michael Long

Next page.

1. e4 c5 2. Nf3 d6 3. d4 cd4
 4. Nd4 Nf6 5. Nc3 g6 6. Be2
 Bg7 7. Be3 Nc6 8. Qd2 O-O 9.
 h3 d5 Black opens the game in an
 unusual manner that almost
 equalizes. 10. ed5 Nd5 11. Nd5
 Qd5 12. Bf3! This gives a
 powerful bishop to white and creates
 some tactics. Qa5 13. Nc6 Qd2
 14. Bd2 bc6 15. Bc6 Rb8?
 Better is Bxb2 with an equal game.
 16. Bc3 Bc3 17. bc3 This
 doubled pawn will not be that easy
 to get back. Bf5 18. Ba4 Rfc8 19.
 Kd2 Rd8 20. Kc1 Rdc8 21.
 Re1 Rc3 22. Re7 White has just
 gained a premier center pawn for a
 doubled one. Rbc8 23. Re2 Bd3
 24. Rd2 Bf1 25. f3 Re3 26.
 Kb2 Rb8 27. Bb3 Bc4 28.
 Rad1 Kg7 Best, to avoid trading off
 a rook. 29. Kc1 Be2 30. Re1
 Rbe8 31. Rd7!

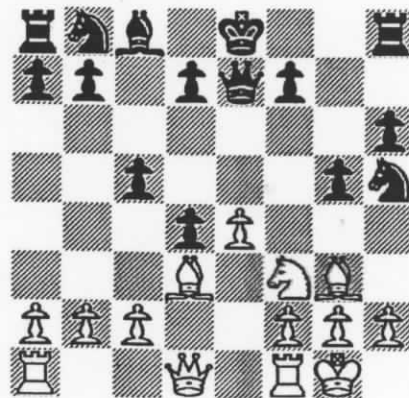


And Black resigns. If Black blocks
 with a rook, White trades it off
 followed by Kd2 & the bishop falls.

Johansson 2031 Brennan 1752
 Bobcat Open Round 4
 9/19/93
 Relfsson Gambit
 Annotations by Jan Johansson

1. e4 e5 2. d4 ed4 3. Nf3 This
 gambit is told to have been invented
 and used circa 1910-30 by the
 Swedish master Relfsson and used
 even internationally in the sixties by
 the well known Swedish master
 Skold. Bb4+! Les has done his

homework, congratulations! All
 other moves are inferior, which my
 games against Motta, Gopen and
 Thompson clearly show (See last
 issue of Montana Chess News).
 This move is rarely played though,
 and the opponents of Relfsson and
 Skold always played 3...Nc6. 4.
 Nbd2 Qe7 5. Bd3 Nf6 6. O-O
 Bd2 7. Bd2 c5 8. Bg5? Correct
 is 8.c3! e.g. 8...dxc3 9.Bxc3. h6 9.
 Bh4 g5 10. Bg3 Nh5?



(10...Nc6) 11. Bb8! Rb8 12.
 Nd4 Ng7 13. Nb5 a6 14. Nc7
 Kf8 15. Nd5 Qe5 16. c3?
 (16.f4!) Ne6 17. f4 Nf4 18. Qf3
 d6 19. Nf4 Qf4 20. Qf4
 (20.Qh5 Bg4!) gf4 21. Rf4 Be6



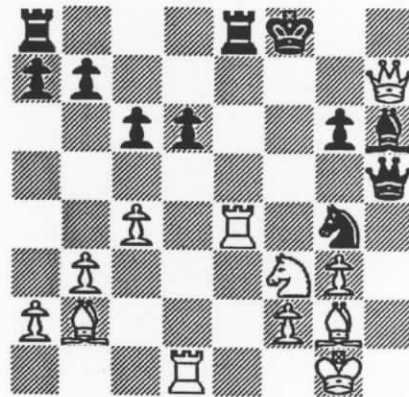
Here Les offered me a draw and I
 accepted. I have a small advantage
 but I only needed a draw to win the
 tournament, while Les needed a win
 to win the tournament. I thought I
 had made a lot of errors already in
 this tournament and I felt kind of
 tired, so I decided to not take any
 more risks.

Erickson 1744 Carpenter 1800
 UCCC First Fall Open Round 2
 9/9/93
 Modern Defense

1. Nf3 g6 2. e4 Bg7 3. d3 e5 4. b4
 Ne7 5. Bb2 d6 6. c4 O-O 7. Nc3 Kh8
 8. h4 Bg4 9. Be2 Bf3 10. Bf3 Nbc6
 11. h5 g5 12. h6 Bf6 13. b5 Nd4 14.
 Bg4 c6 15. a4 Ng6 16. g3 Be7 17.
 Ne2 Ne6 18. d4 Qc7 19. Qb3 c5 20.
 d5 Nd4 21. Qd3 Bd8 22. Bc1 a6 23.
 ba6 Ra6 24. Nc3 Qe7 25. Rh5 f6 26.
 Nb5 Ba5 27. Kf1 Rfa8 28. Kg2 Bd8
 29. Bd1 Nf8 30. Bd2 Nd7 31. Bc3
 Ba5 32. Rh1 Bc3 33. Nc3 Nb6 34.
 Ra2 Qd7 35. Rf1 Rg8 36. a5 Nc8
 Draw agreed.

Carpenter 1800 Shughart 1800
 UCCC First Fall Open Round 3
 9/16/93
 English Opening

1. c4 g6 2. g3 Bg7 3. Bg2 c6 4. Nc3
 Nf6 5. e4 e5 6. Nge2 O-O 7. O-O d6
 8. d4 ed4 9. Nd4 Nbd7 10. b3 Re8
 11. Bb2 Ne5 12. Qd2 Nfg4 13. Rad1
 Bh6 14. Qc2 Qg5 15. h3 Qh5 16. hg4
 Ng4 17. Nf3 f5 18. Rfe1 fe4 19.
 Ne4 Bf5 20. Qc3 Be4 21. Qh8 Kf7
 22. Qh7 Kf8 23. Re4



23...Nf2?? 24. Rf4+! Black resigns.

Carpenter 1800 Suits 1956
 Chinook Open Round 2
 10/9/93
 English Opening

1. c4 c5 2. g3 g6 3. Bg2 Bg7 4. Nc3
 Nc6 5. e3 e6 6. Nge2 Nge7 7. O-O
 O-O 8. d4 cd4 9. ed4 d5 10. c5 b6

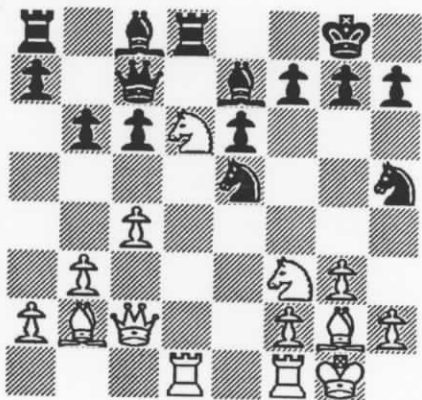
11. a3 Nf5 12. Nb5 a6 13. Qa4 Bd7
White resigns.

Douglas UNR **Luther UNR**
Chinook Open **Round 3**
10/9/93
Macho Grob

1. e4 g5 2. d4 h6 3. f3 Bg7 4. Nh3
Nc6 5. c3 e6 6. Nd2 Nge7 7. Bc4 d5
8. ed5 ed5 9. Bb3 Na5 10. Ba4 c6
11. b4 Nc4 12. Qe2 a5 13. a3 O-O
14. g3 Re8 15. O-O Bh3 16. Re1 Nf5
17. Qd1 ab4 18. ab4 Nfe3 19. Qb3
b5 20. Nc4 Nc4 21. g4 Re1 22. Kf2
Qe8 23. Kg3 Bf1 24. Qa2 Be5 25.
de5 Qe5 26. Kf2 Re8 27. Bd2 Qh2
Mate.

Carpenter 1800 **Skovron 1827**
Chinook Open **Round 3**
10/9/93
English Opening

1. c4 c6 2. b3 Nf6 3. Bb2 e6 4. g3
d5 5. Bg2 Be7 6. Nf3 Nbd7 7. O-O
Qb6 8. Qc2 O-O 9. d3 Ne8 10. e4
de4 11. de4 Nef6 12. Nbd2 Rd8 13.
e5 Nh5 14. Ne4 Qc7 15. Rad1 b6 16.
Nd6 Ne5?

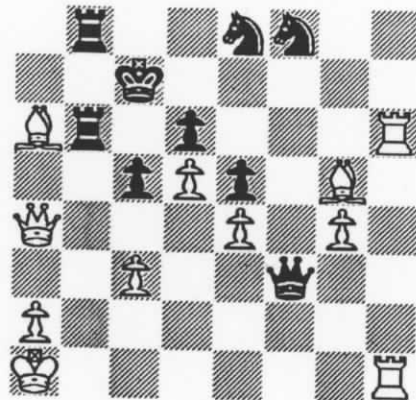


17. Be5 Bd6 18. Qd2 Black resigns.

Suits 1956 **Matous 1819**
Chinook Open **Round 3**
10/9/93
Nimzo-Indian Defense

1. d4 Nf6 2. c4 e6 3. Nc3 Bb4 4.
Bg5 h6 5. Bh4 c5 6. d5 Bc3 7. bc3
d6 8. f3 b6 9. e4 g5 10. Bf2 Bd7

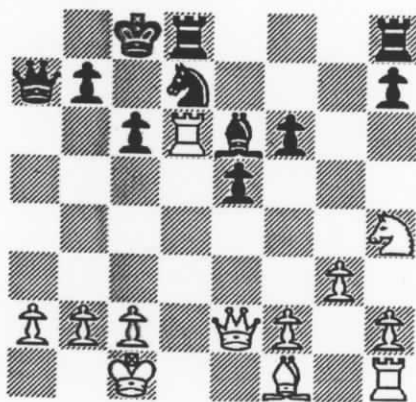
11. Bd3 Na6 12. h4 Ke7 13. Qd2
Qg8 14. g4 e5 15. Ne2 Qg7 16. O-
O-O Nc7 17. Be3 Nh7 18. Ng3 f6
19. Rdg1 Qf7 20. Kc2 a6 21. Rb1
Rhb8 22. Kb2 b5 23. Ka1 Rb7 24.
hg5 hg5 25. Rh6 Ne8 26. Rbh1 Nf8
27. Nh5 Kd8 28. Nf6 Kc7 29. Nd7
Kd7 30. Bg5 bc4 31. Bc4 Rab8 32.
Qc2 Qf3 33. Ba6 Rb6 34. Qa4 Kc7



35. Rh7 Nh7 36. Rh7 Black resigns.

Hansen 1670 **McBroom 1655**
Chinook Open **Round 3**
10/9/93
Center Counter

1. e4 d5 2. ed5 Qd5 3. Nc3 Qa5 4.
d4 Nf6 5. Bd2 c6 6. Nf3 Bf5 7. Ne4
Qc7 8. Nf6 gf6 9. g3 Nd7 10. Bf4 e5
11. de5 fe5 12. Qe2 Bd6 13. O-O-O
O-O-O 14. Be3 f6 15. Ba7 Qa5 16.
Rd6 Qa7 17. Nh4 Be6!



18. a3! (Why didn't White take that
free bishop on e6?) Nc5 19. Rd8
Rd8 20. Qe3 b6 21. Bg2 Qc7

22. Rd1 Rd1 23. Kd1 Qd6 24. Kc1
Kc7 25. Qh6 Qe7 26. f4 ef4 27. Qf4
Kb7 28. b4 Ba2 29. bc5 Qe1 30.
Kb2 Qb1 31. Kc3 Qe1 32. Kd3 Qd1
33. Qd2 Bc4 34. Kc3 Qa1 35. Kc4
b5 36. Kd3 Qa3 37. Qc3 Qc1 38.
Nf5 Qd1 39. Qd2 Qg4 40. Nd6 Kc7
41. Qa5 Kd7 42. Qa7 Ke6 43. Qf7
Black resigns.

Erickson 1744 **Suits 1956**
Chinook Open **Round 4**
10/10/93
King's Indian Attack


1. e4 c6 2. d3 d5 3. Nd2 g6 4. g3
Bg7 5. Bg2 Nf6 6. Ngf3 O-O 7. O-O
Na6 8. e5 Ne8 9. Re1 Bg4 10. h3
Bd7 11. Qe2 Qc8 12. Kh2 Nac7 13.
Nb3 Ne6 14. c3 N8c7 15. d4 a5 16.
Be3 a4 17. Nbd2 b6 18. Bg5 Ng5 19.
Ng5 Ne6 20. f4 Ng5 21. fg5 Qc7 22.
Rf1 Be6 23. Rf4 Qd7 24. Raf1 Rab8
25. h4 h5 26. Bf3 b5 27. g4 Bg4 28.
Bg4 hg4 29. Qg4 Qg4 30. Rg4 b4 31.
c4 e6 32. Rgf4 c5 33. Re1 dc4 34.
Nc4 cd4 35. Rd4 Rfd8 36. Ree4 Rd5
37. Rd2 b3 38. a3 Rbb5 39. Rde2
Rbc5 40. Kg2 Rd8 41. Nb6 Ra5 42.
Nc4 Ra7 43. Nb6 Ra5 44. Nc4 Rc8
45. Ne3 Rcc5 46. Ng4 Ra6 47. Kf3
Kf8 48. Kf4 Ke8 49. Rb4 Draw
agreed.

Carpenter 1800 **Goplen 1657**
Chinook Open **Round 5**
10/10/93
English Opening

1. c4 Nf6 2. g3 d5 3. cd5 Qd5 4. Nf3
Nc6 5. Nc3 Qh5 6. Bg2 Bh3 7. Bh3
Qh3 8. Qb3 Qd7 9. Qb7 Rb8 10. Qa6
e5 11. d3 Bc5 12. O-O h5 13. Qc4
Bd6 14. b3 Rb4 15. Qa6 h4 16. Bg5
hg3 17. fg3 Bc5 18. Kh1 Ng4 19.
Nd5 Qd5 20. Qc8 Nd8 21. e4 Qd7
22. Qd7 Kd7 23. d4 Bd4 24. Rad1 c5
25. Kg2 Ne6 26. Bd2 Rbb8 27. h3
Nf6 28. Ne5 Ke8 29. Nc6 Rb7 30.
Na5 Rd7 31. Nc4 Ne4 White resigns.

THE CLOSED

-- NOTES BY ZYGMOND MAYER --

 This year's candidates included several former state champions, two masters and three experts. Thad Suits had to bow out at the last minute, which gave Paul Motta another shot at the title. You'll notice a larger number of draws than usual.

ROUND 1

1 Motta - Jensen 0
1 Loy - Thompson 0
1/2 Nowak - Mayer 1/2

Paul Motta ventured into BDG against Michael Jensen. Jensen chose 14...Qh4+ to disrupt the white king-side pawns. At move 33, Michael was in time trouble and lost a pawn in a bad position. In the time scramble, efforts to make controls may have led to Paul's downfall, as the scoresheet omits several key moves.

Jim Loy and John Thompson played an offbeat opening and Jim's exchange sac's netted a couple of pawns and Jim held on to win.

Greg Nowak ventured the famous 1.g3 against the less famous 1...g5 defense, picking up a couple of pawns with an easy endgame, only to give them back after making time control, resulting in a draw.

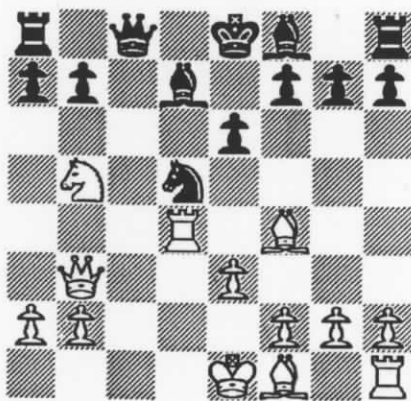
Motta 2014 Jensen 1951
1993 Montana State Closed
9/18/93 Round 1
Blackmar-Diemer Gambit

1. d4 d5 2. e4 c6 3. Nc3 de4 4. Bc4 Nd7 5. f3 Nb6 6. Bb3 a5 7. a3 a4 8. Ba2 e3 9. Be3 Nf6 10. Nge2 Nfd5 11. Qd2 Ne3 12. Qe3 e6 13. Ne4 Nd5 14. Qd2 Qh4 15. g3 Qh5 16. O-O Be7 17. c4 Nf6 18. Rae1 O-O 19. Nf4 Qa5 20. Nc3 Rd8 21. Kh1 e5 22. d5 cd5 23. Nfd5 Nd5 24. cd5 Bh3 25. Rf2 Bc5 26. Rfe2 Bd4 27. Qd3 Qb6 28. Ne4 Bf5 29. f4 g6 30. fe5

Be5 31. Qf3 Bg7 32. g4 Bd7 33. d6 Bc6 34. Qf7 Kh8 35. Bd5 Black won (incomplete scoresheet).

Loy 1923 Thompson 2100
1993 Montana State Closed
9/18/93 Round 1
English Opening

1. c4 c5 2. Nf3 Nf6 3. d4 cd4 4. Nd4 d5 5. cd5 Qd5 6. Nc3 Qd8 7. Bf4 Bd7 8. Qb3 Nc6 9. Rd1 Nd4 10. Rd4 Qc8 11. e3 e6 12. Nb5 Nd5

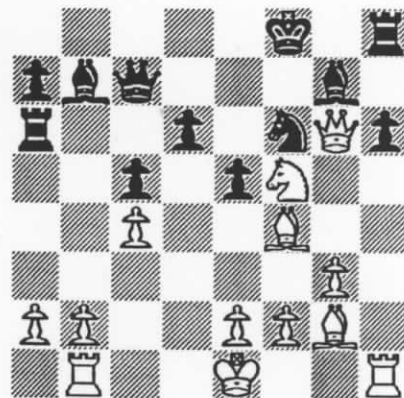


13. Rd5! ed5 14. Nc7 Kd8 15. Na8 Qa8 16. Qd5 Bb4 17. Kd1 Qc8 18. Qf7 Ba4 19. b3 Qc3 20. Bg5 Kc8 21. Qc4 Qc4 22. Bc4 Bc6 23. f3 h6 24. Bf4 Rd8 25. Kc1 Ba3 26. Kc2 b5 27. Be6 Kb7 28. Rd1 Re8 29. Bd7 Re7 30. Bc6 Kc6 31. e4 g5 32. Be3 a5 33. Rd5 Bd6 34. h4 g4 35. Bh6 gf3 36. gf3 Rf7 37. Rf5 Rh7 38. Rf6 Kd7 39. Bg5 Black resigns.

Nowak 2202 Mayer 2088
1993 Montana State Closed
9/18/93 Round 1
Macho Grob

1. g3 g5 2.c4 Bg7 3. Bg2 c5 4. Nc3 Nc6 5. Ne4 Ne5 6. Qc2 h6 7. Nc5 Qc7 8. d4 Rb8 9. h4 b6 10. hg5 bc5 11. de5 Be5 12. g6 Rb6 13. gf7 Kf7 14. Nf3 Bg7 15. Rb1 Bb7 16. Bd2 Nf6 17. Bf4 d6 18. Nh4 Ra6

19. Qg6 Kf8 20. Nf5 e5



21. Ng7 Qg7 22. Qg7 Kg7 23. Bb7 Rb6 24. Be5 de5 25. Bd5 Rhb8 26. b3 a5 27. Kd2 a4 28. Kc3 Ng4 29. f4 ab3 30. Rb3 ef4 31. gf4 Rb3 32. ab3 Rf8 33. Rf1 h5 34. b4 cb4 35. Kb4 Kf6 36. e4 h4 37. Rh1 Rh8 38. c5 h3 39. e5 Ke7 40. Rg1 Rh4 41. Ra1 Ne5 42. Ra7 Kd8 43. Kb5 Rf4 44. Rh7 Rd4 45. Be6 Rd3 46. Kb6 Rc3 47. Rh5 Nd7 48. Bd7 Kd7 49. Rh7 Ke6 50. c6 Kf5 51. c7 Kg4 52. Rh6 Kg3 53. Rh7 h2 54. Rh6 Rc1 55. Kb7 Rc7 56. Kc7 Kg2 Draw.

ROUND 2

1/2 Jensen - Nowak 1/2
1/2 Mayer - Thompson 1/2
1/2 Loy - Motta 1/2

This round saw all games drawn with Jensen/Nowak adjourned until 2:00am! It was now 4:00pm.

Loy and Jensen kept tied for the lead as Greg and Zygmund pursued.

Jim Loy, with white against Paul Motta, used a Larson-London type system. Their game reached the endgame at move 15 in an even position, drawing near time control.

John Thompson declined Zygmund Mayer's Goring Gambit and ventured a Two Knights vs. rook and pawn and an endgame with white having the two bishops against the rook. White may have been able to win this endgame but a draw was agreed (It was about 1:30am).

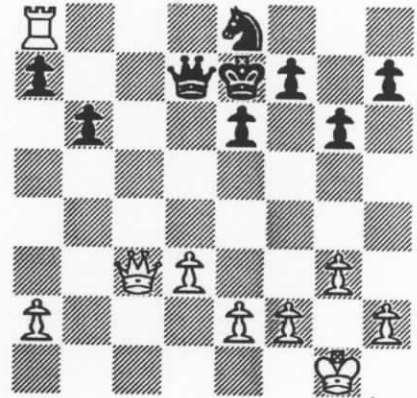
Jensen 1951 Nowak 2202
 1993 Montana State Closed
 9/18/93 Round 2
Torre Attack

Loy 1923 Motta 2014
 1993 Montana State Closed
 9/18/93 Round 2
Larsen's Attack

29...Qc6 30. Qb5 Qc8 31. Rfc1 Rc7
 32. Qb2 Qd8 33. Nd5 Rd5 34. cd5
 Qd5 35. Rc7 Nc7 36. Rc1 Ne8 37.
 Rc8 Qd7 38. Qc3 Kf8 39. Ra8 Ke7

1. d4 Nf6 2. Nf3 e6 3. Bg5 Be7 4.
 Nbd2 d5 5. e3 h6 6. Bh4 c5 7. c3
 Nc6 8. Bd3 Nh5 9. Be7 Qe7 10. O-O
 Nf6 11. Ne5 O-O 12. f4 Nd7 13. Qh5
 f5 14. g4 Nf6 15. Nc6 bc6 16. Qh4
 Rb8 17. Rab1 Rb7 18. g5 Ne4 19.
 Nf3 hg5 20. fg5 Bd7 21. Be4 de4
 22. Ne5 Be8 23. Qg3 Bh5 24. g6 Rf6
 25. Qh3 Bg6 26. Rf4 Bh7 27. Rh4 g6
 28. Kh1 Qf8 29. Rg1 Qg7 30. b3 g5
 31. Rh5 g4 32. Qh4 Qf8 33. Rg5 Rg7
 34. Nd7 Qf7 35. Nf6 Qf6 36. Rg7
 Kg7 37. Qf6 Kf6 38. dc5 f4 39. ef4
 Kf5 40. Rf1 e3 41. Kg2 Ke4 42. Kg3
 Bf5 43. Rd1 e2 44. Re1 Ke3 45. c4
 a6 46. a3 Kd3 47. Kf2 Kc3 48. Re2
 Kb3 49. Re3 Kc4 50. Ke2 Kc5 51.
 Rc3 Kd5 52. Ke3 a5 53. Rb3 Kc4
 54. Rb6 Kc5 55. Rb8 Kc4 56. Rb7
 c5 57. Kd2 a4 58. Kc1 Be4 59. Rb6
 Bd5 60. Kb2 Kd3 61. Ra6 Bb3 62.
 Ra8 Ke4 63. Rf8 Bd5 Draw agreed.

1. b3 e5 2. Bb2 Nc6 3. e3 d5 4. Bb5
 Bd6 5. f4 Qh4 6. g3 Qe7 7. Nf3 Bg4
 8. fe5 Be5 9. Be5 Bf3 10. Qf3 Qe5
 11. Nc3 Nf6 12. O-O O-O 13. Bc6
 bc6 14. Qf4 Qd6 15. Qd6 cd6 16.
 Rf4 Rfe8 17. Raf1 Re7 18. Rb4
 Rae8 19. Rff4 h6 20. Kg2 Kf8 21.
 Ra4 Rc7 22. Ra6 Ree7 23. Rfa4
 Red7 24. Kf3 Re7 25. Ke2 Ke8 26.
 Kf3 Nd7 27. Rb4 Ne5 28. Kf2 Kd7
 29. Ne2 Kc8 30. Kg2 Nd7 31. Nc3
 Nf6 32. Kf3 Nd7 33. Kg2 Nc5 34.
 Ra5 Rb7 35. Rf4 Ne6 36. Rfa4 Nc5
 37. Rf4 Ne6 38. Rfa4 Nc5 39. Rf4
 Draw.



40. Qa3! Kf6 41. Ra7 Qd4 42. Qe7
 Black resigns.

ROUND 3

1 Nowak - Loy 0
 1/2 Jensen - Mayer 1/2
 1/2 Thompson - Motta 1/2

In the third round, Greg pulled even with Michael Jensen for a share of the lead with his solid win over Jim Loy. The rest of the field settled with draws, keeping Jim and Paul at the bottom of the pack, but only one point behind the leaders with plenty of chess left.

Nowak 2202 Loy 1923
 1993 Montana State Closed
 9/18/93 Round 3
Benko Opening

1. g3 d5 2. Bg2 Nf6 3. Nf3 g6 4. c4
 c6 5. b3 Bg7 6. Bb2 O-O 7. O-O Qb6
 8. Qc1 Na6 9. Bd4 c5 10. Be5 d4
 11. Na3 Bd7 12. Nc2 Nb4 13. Nfd4
 Nc2 14. Nc2 Bc6 15. Qb2 Bg2 16.
 Kg2 Rfd8 17. Ne3 Ne8 18. Nd5 Qe6
 19. Bg7 Ng7 20. Ne3 Rd4 21. b4
 Rad8 22. d3 cb4 23. Qb4 Qc6
 24. Kg1 e6 25. Rab1 b6 26. Qb5 Qc7
 27. Qg5 R8d7 28. Ng4 Ne8 29. Ne3

Jensen 1951 Mayer 2088
 1993 Montana State Closed
 9/18/93 Round 3
Macho Grob

1. d4 h6 2. e4 g5 3. Nc3 Bg7 4. h4
 g4 5. h5 c5 6. Be3 Qa5 7. Qd2 cd4
 8. Bd4 Bd4 9. Qd4 Nf6 10. O-O-O
 Nc6 11. Qe3 d6 12. Bc4 Bd7 13.
 Nge2 Ne5 14. Bb3 b5 15. Nd5 Nd5
 16. Bd5 Rc8 17. Qd4 Rg8 18. Kb1
 Qc7 19. Rc1 a5 20. a3 e6 21. Ba2
 Ke7 22. Qe3 Rg5 23. f4 gf3 24. gf3
 Nc4 25. Qd3 Qc5 26. Bc4 bc4 27.
 Qd4 Rh5 28. Rcd1 Qd4 29. Nd4 Rh1
 30. Rh1 Rh8 31. Ne2 h5 32. Rh4 f6
 33. Nf4 Be8 34. Kc1 Bf7 35. Kd2 e5
 36. Nd5 Bd5 37. ed5 Kf7 38. Kc3
 Kg6 39. Kc4 Kg5 40. Rh1 Rc8 41.
 Kd3 h4 42. Rh3 f5 43. b4 ab4 44.
 ab4 e4 45. fe4 fe4 46. Kd2 Kg4 47.
 Re3 Re8 48. Ke2 h3 49. Kf2 Kh4 50.
 Kg1 Draw agreed.

Thompson 2100 Motta 2014
 1993 Montana State Closed
 9/18/93 Round 3
Budapest Gambit

1. d4 Nf6 2. c4 e5 3. de5 Ng4 4. Nf3
 Bc5 5. e3 Nc6 6. Nc3 Nge5 7. Ne5
 Ne5 8. Be2 d6 9. O-O O-O

Mayer 2088 Thompson 2100
 1993 Montana State Closed
 9/18/93 Round 2
Goring Gambit Declined

1. e4 e5 2. Nf3 Nc6 3. d4 ed4 4. c3
 d5 5. ed5 Qd5 6. cd4 Nf6 7. Be2 Bb4
 8. Nc3 O-O 9. O-O Bc3 10. bc3 Bf5
 11. c4 Qd6 12. d5 Ne5 13. Nd4 Neg4
 14. g3 Bd7 15. Bf4 Ne5 16. Qb3 b6
 17. Rfe1 Rfe8 18. Kg2 Qc5 19. Rad1
 c6 20. d6 Rad8 21. Qa4 Neg4 22. h3
 Nf2 23. Kf2 Ne4 24. Kg2 Nc3 25.
 Qc2 Nd1 26. Qd1 Re4 27. Nb3 Qf5
 28. Bg4 Re1 29. Qe1 Qc2 30. Qe2
 Qe2 31. Be2 c5 32. Bf3 Be6 33. Nd2
 f6 34. g4 g5 35. Bh2 Kg7 36. Bc6
 Kg6 37. Bb5 Bc8 38. Bc6 Be6 39.
 Bb5 h5 40. gh5 Kh5 41. Ne4 Kg6 42.
 a4 f5 43. Nc3 f4 44. Ne4 Bf5 45.
 Bc6 Be4 46. Be4 Kf6 47. h4 Rd6 48.
 hg5 Kg5 49. Kf3 Rf6 50. Bd5 Rf8
 51. Be4 Rf6 Draw agreed.

10. b3 Re8 11. Bb2 Re6 12. Nd5 Rh6 13. Nf4 Qh4 14. h3 Ng6 15. Bg4 Bg4 16. Qg4 Qg4 17. hg4 Nf4 18. ef4 Rh4 19. g3 Rg4 20. Kg2 f5 21. Rae1 Kf7 22. Rh1 h6 23. f3 Rg6 24. Rh5 Re6 25. Rf5 Ke7 26. Re6 Ke6 27. g4 Rg8 28. Rh5 Kf7 29. Rf5 Kg6 30. Rd5 Re8 31. f5 Kf7 32. Rd2 Re1 33. Bc3 Re3 34. Rc2 Rd3 35. b4 Be3 36. Kf1 Bg5 37. Ke2 Re3 38. Kf2 Re7 39. Bd4 Bh4 40. Kg2 Be1 41. a3 a5 42. Rb2 ab4 43. ab4 Bh4 44. Rc2 Be1 45. b5

Draw agreed

ROUND 4

0	Motta - Nowak	1
1	Mayer - Loy	0
1	Thompson - Jensen	0

In the fourth round, Greg Nowak keeps his half point lead over Zygmund with his win over Paul. John Thompson in pursuit, behind only one point, wins convincingly over Jensen, having the opportunity to play Greg in the last round.

Zygmund skirmishes against Jim and takes a close one for the point.

And... Paul's flag was again the culprit in his loss to Greg, which squelched his bid to win the elusive state title.

Motta 2014 **Nowak 2202**
1993 Montana State Closed
9/19/93 **Round 4**
Modern Defense

1. d4 g6 2. e4 Bg7 3. Nc3 d6 4. Bc4 c6 5. Qe2 b5 6. Nb5! e6! 7. Nc3 Bd4 8. Bd2 Qc7 9. Nf3 Bg7 10. O-O Nd7 11. Rfe1 Ngf6 12. Rad1 O-O 13. Bf4 Ne8 14. Qd2 Nb6 15. Bb3 e5 16. Bh6 Be6 17. Bg7 Kg7 18. Ng5 Bb3 19. cb3 h6 20. Nh3 Nd7 21. b4 a6 22. Re3 Nb6 23. Rg3 Qe7 24. f4 Nc4 25. Qe2 ef4 26. Nf4 Ne5 27. Nd3 Nc7 28. Ne5 de5 29. Qg4 Ne6 30. Rgd3 h5 31. Qg3 Nd4 White's flag falls.

Mayer 2088 **Loy 1923**
1993 Montana State Closed
9/19/93 **Round 4**
The Grob

1. g4 d5 2. c4 Bg4 3. Bg2 c6 4. cd5 cd5 5. Qb3 Nf6 6. Qb7 Qc8 7. Qc8 Bc8 8. Nc3 e6 9. e4 de4 10. d3 Bb7 11. Nge2 Nbd7 12. Ne4 Bb4 13. N2c3 Ne4 14. Be4 Be4 15. de4 Nc5 16. f3 Bc3 17. bc3 Nd3 18. Ke2 Nc1 19. Rac1 Ke7 20. Rhg1 g6 21. c4 Rhd8 22. Rb1 Rac8 23. Rgc1 Rd7 24. Rb2 f5 25. Ke3 e5 26. Rb5 Ke6 27. Rd5 Rd5 28. cd5 Kd7 29. Rc8 Kc8 30. h4 Kd7 31. Kd3 Kd6 32. a3 h6 33. Ke3 Kc5 34. Kf2 a5 35. Kg3 Kd6 36. Kf2 Kc5 37. Ke2 Kd6 38. Kd3 Kc5 39. a4 g5 40. hg5 hg5 41. Ke3 Kd6 42. Kf2 Kc5 43. Kg3 fe4 44. fe4 Kb4 45. d6 Ka4 46. d7 Kb3 47. d8=Q a4 48. Qd5 Black resigns.

Thompson 2100 **Jensen 1951**
1993 Montana State Closed
9/19/93 **Round 4**
Smith-Morra Gambit Declined

1. e4 c5 2. d4 cd4 3. c3 Nf6 4. e5 Nd5 5. Qb3 e6 6. cd4 Nc6 7. Nf3 Na5 8. Qa4 Qb6 9. Nc3 Qb4 10. Qc2 Nc6 11. Be3 Ne3 12. fe3 d6 13. ed6 Bd6 14. Bd3 h6 15. O-O O-O 16. a3 Qa5 17. Ne4 Be7 18. b4 Qb6 19. b5 Nb8 20. Ne5 Nd7 21. Nc4 Qd8 22. Rf3 Nf6 23. Raf1 Bd7 24. a4 Rc8 25. Nf6 Bf6 26. Qf2 Qe7 27. Qg3 Bh4 28. Qe5 f5 29. Rh3 Qf6 30. Qd6 Rcd8 31. Qc7 Bc8 32. Ne5 Qe7 33. Rc1 Bf6 34. Qb8 Black's flag falls.

Round 5

1	Nowak - Thompson	0
1	Mayer - Motta	0
0	Loy - Jensen	1

In the final 5th round, Greg held a half point lead and a win would give him the title uncontested. Greg wrested a pawn early in the game and built a commanding position to knock John out on the 21st move, thus

repeating as Montana's State Champion.

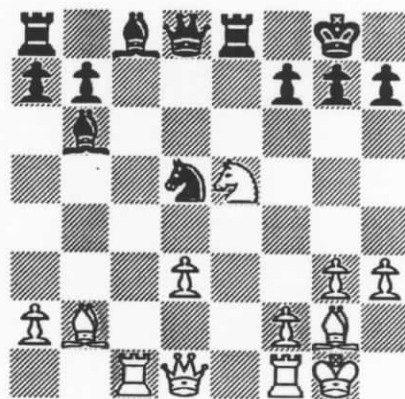
Paul Motta lost to Zygmund and his typically unusual Grob's. Black's 3rd move 3...Bxf2 may be of interest to the adventurer. Does white survive?*

Jim Loy's game falls to pieces against Michael Jensen, nevertheless both players will have to wait and try again next year.

Congratulations, Greg!

Nowak 2202 **Thompson 2100**
1993 Montana State Closed
9/19/93 **Round 5**
Benko Opening

1. g3 e5 2. Bg2 d5 3. d3 c6 4. Nf3 Bd6 5. e4 d4 6. O-O Nf6 7. h3 O-O 8. c3 c5 9. b4 dc3 10. bc5 Bc5 11. Nc3 Nc6 12. Bb2 Re8 13. Rc1 Bb6 14. Nd5 Nd5 15. ed5 Nb4 16. Ne5 Nd5



17. Nf7! Kf7 18. Qh5 Kg8 19. Bd5 Kh8 20. Qh6 Qe7 21. Rce1 Black resigns.

Mayer 2088 **Motta 2014**
1993 Montana State Closed
9/19/93 **Round 5**
The Grob

1. g4 e5 2. c4 Bc5 3. Nc3 Qh4 4. e3 Nf6 5. h3 e4 6. Bg2 Nc6 7. Ne4 Ne4 8. Be4 Qe7 9. Bg2 Ne5 10. Qc2 f5 11. gf5 Qg5 12. Be4 d6 13. b4 Bb6 14. c5 d5 15. Bb2 Bf5 16. Bf5 Qg2 17. Be5 Qh1 18. O-O-O Black resigns.

- Continued on page 11 -

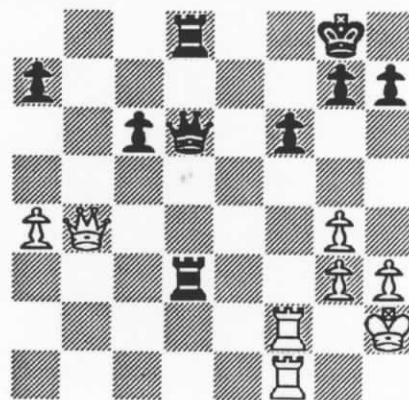
Loy 1923 Jensen 1951
 1993 Montana State Closed
 9/19/93 Round 5
 Larson's Attack

1. b3 d5 2. Bb2 Nf6 3. e3 Bg4 4.
 Nf3 c6 5. c4 e6 6. Be2 Nbd7 7. O-O
 Bd6 8. Nc3 O-O 9. d3 e5 10. e4 d4
 11. Nb1 Qe7 12. Nd4 Be2 13. Ne2
 b5 14. Nd2 Nc5 15. Qc2 Ne6 16. d4

ed4 17. Nd4 Nd4 18. Bd4 Ng4 19.
 g3 Bb4 20. f3 Rfd8 21. fg4 Rd4 22.
 Nf3 Re4 23. h3 bc4 24. bc4 Qc5 25.
 Kh1 Rc4 26. Qd3 Qd5 27. Qb3 Rc3
 28. Qb4 Rf3 29. Kh2 Rd3 30. Rf2
 Rd8 31. a4 f6 32. Raf1 Qd6
 (diagram)



33. Qb7?? Qg3! 34. Kh1 Qh3 35.
 Kg1 Rg3 White resigns.



UPCOMING EVENTS

TURKEY OPEN NOV. 6,7 1993

Room 362, Social Science Building, University of Montana, Missoula, MT. 5 Round Swiss. Time control: 30/90, SD/60. Rounds: 9:00am, 2:30pm, 7:30pm, 8:30am, 1:45pm. Registration 8:00 - 8:30am Nov. 6. EF \$15 if by 11/4, \$20 at site. Juniors half price (\$7.50 if by 11/14, \$10 at site.) No other discounts. Prize fund: \$200 Guaranteed (\$100 1st, \$50 2nd, \$25 U1900, \$15 U1700, \$10 U1500) Trophy for biggest upset (both players must have nonprovisional rts). MCA membership required (\$6), other states OK. No smoking, No computers, Wheelchair accessible. For advance registration or info: Sherwood Moore, 453 Minnesota, Missoula, MT 59802 (406) 728-1695

SATURDAY ARENA OPEN * NOV. 13, 1993

Rooms 273 & 274, Student Union Building, Montana State University, Bozeman, MT. 4 Round Swiss. Time control: G/90. Rounds: 9:00am, 12:30pm, 3:45pm, 7:30pm. Registration 8:15 - 8:45am Nov. 13. EF \$10. Prizes: \$ per entries. MCA membership required (\$6) - other states OK. NS, NC, W. For advance registration or info: Steve Scarff, 214 S. Church Ave. Bozeman, MT 59715 (406) 586-4479

ANDROMEDID ACTION OPEN NOV. 14, 1993 (FULL K)

Rooms 275, Student Union Building, Montana State University, Bozeman, MT. 5 Round Swiss. Time control: G/30. Rounds: 9:00am, 10:15am, 11:30am, 1:15pm, 2:30pm. Registration 8:30 - 8:55am Nov. 14. EF \$10. Prizes: \$ per entries. MCA membership required (\$6) - other states OK. NS, NC, W. For advance registration or info: Steve Scarff, 214 S. Church Ave. Bozeman, MT 59715 (406) 586-4479

FOUR SCORE OPEN * NOV. 20, 1993

Human Services Building, 415 Willow Ave, Colstrip, MT. 4 Round Swiss. Time control: G/80. Rounds: 9:00am, 12:10pm, 3:00pm, 6:00pm. Registration 8:20 - 8:50am Nov. 20. EF \$10. Prizes: \$ per entries. MCA membership reqd (\$6) - other states OK. NS, NC, W. For advance registration or info: Les Brennan, P.O. Box 2404, Colstrip, MT 59323 (406) 748-2154.

SATURDAY ARENA OPEN * DEC. 11, 1993

Rooms 276, Student Union Building, Montana State University, Bozeman, MT. 4 Round Swiss. Time control: G/90. Rounds: 9:00am, 12:30pm, 3:45pm, 7:30pm. Registration 8:15 - 8:45am Dec. 11. EF \$10. Prizes: \$ per entries. MCA membership required (\$6) - other states OK. NS, NC, W. For advance registration or info: Steve Scarff, 214 S. Church Ave. Bozeman, MT 59715 (406) 586-4479



MCA logo ball caps still available.
Contact Bill Lynch (406) 256-1399

TOURNAMENT DIRECTORS

When submitting games and crosstables for the newsletter, please include comments of highlights, etc. which we, the readers may find interesting. Your contributions will make our newsletter more fun to read. Please be sure to forward info. on MCA membership renewals and new members also. The current membership list indicates some expired memberships (as per top right of mailing label), some of which may in fact be up-to-date.

PICTURE THIS

I've been fooling around with a scanner, trying to develop the capability of including pictures in the newsletter, as you've probably observed. I hope you like them. We can have some real fun with pictures in future issues if someone is willing to take a few pictures.

If you have a camera, and feel like taking a few pictures when at the tournament, we can all benefit from it by seeing them in MCN. I will return all photos sent. Ed.

ROCKY MOUNTAIN CHESS!

If you haven't seen it, ask around, surely someone you know subscribes to it. Here is one **BIG**, amazingly interesting chess publication, replete with stats, games, stories, pictures, announcements, you name

UNDER 1800 STATE CLOSED COMPETITION CONSIDERED

Zygmund Mayer has suggested that MCA should have an under-1800 state champion, and a "Closed" playoff to that end. He would like your input. Your comments will help make this a reality. Talk it around and make your suggestions known to your regional VP or send a postcard to Zygmund Mayer, 4415 Rimrock Rd. Billings, MT 59106.

4 ROUNDS, 1 DAY!

Can't get enough? The Bozeman Saturday Arena (see Upcoming Events) will provide four good games in one day. Try it, you'll like it.

it! If you play chess, you'll probably find your name in it! \$12/yr (6 iss).

Rocky Mountain Chess
5797 Moki #13
Casper, WY 82604

12475278 1914 R 9211
Thad Suits
2125 1st Ave. N.
Great Falls, MT 59401

MONTANA CHESS NEWS
P.O. BOX 2404
COLSTRIP, MT 59323

