

Editor - Les Brennan, P.O. Box 2404  
Colstrip, MT 59323 (406) 748-2154

# MONTANA CHESS NEWS

Montana Chess News is published by the MONTANA CHESS ASSOCIATION, an affiliate of the U. S. CHESS FEDERATION Promoting Chess Excellence by Education and Competition Membership / Subscription = \$6 / yr regular, \$3 / yr junior

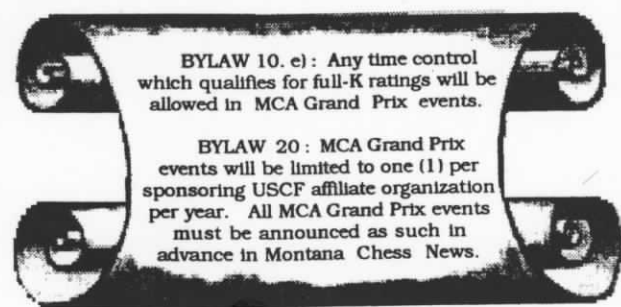
**'OCTOPUS' DEVOURS HUGE TURKEY**  
**ANDERSON, McBROOM & MOORE**  
 TIE AT UCCC SECOND FALL OPEN  
**LONG & BRENNAN SHARE TOP HONORS**  
 AT NOVEMBER SATURDAY ARENA OPEN  
**LOY, MATOUS, LONG & BRENNAN**  
 IN FOUR-WAY TIE FOR LEAD AT ANDROMEDID ACTION OPEN  
**BRENNAN & DUKE TIE AT FOUR SCORE OPEN**  
**NOWAK WINS UCCC THIRD FALL OPEN**  
**JOHANSSON TAKES FIRST PLACE**  
 AT DECEMBER SATURDAY ARENA OPEN

## MCA BYLAWS AMENDED

**T**here are more time control formats these days, and the phenomenon of faster chess is starting to appeal to more and more players in Montana. Game-in-30 minutes (G/30), Game-in-1 hour (G/1), Game-in-90 min. (G/90), Game-in-2 hrs. (G/2) and other in-between time limits are being experimented with on many fronts with mixed reviews. Some of us love 'em and some of us hate 'em!

There seems to be a general correlation between ratings and fast-chess ability, but the element of danger seems to correlate also. There do seem to be more upsets in the faster events. To some, ratings make the man, and they

are to be protected at all costs. To others, the thrill of putting it all on the line in a timed thinking race



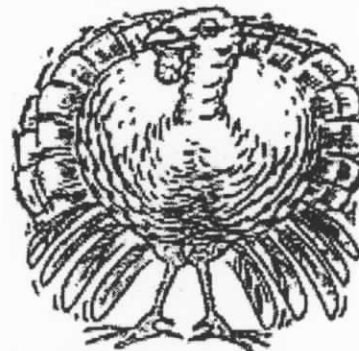
is the ultimate. Only thing is, some are better at fast chess than others, just as there are sprinters and long distance runners. It can't be said, though, that a champion

sprinter isn't a good runner because he can't do a good mile - the converse being true also. The long distance runner and the sprinter are both capable runners, they just don't dare enter each other's event.

Recent amendments to the MCA bylaws will afford Montana chess players the opportunity of receiving MCA Grand Prix point awards for excellence in tournaments featuring faster - as well as slower - time controls. The new bylaws can be seen in the scroll at left.

Bylaw 20 is an experiment conceived with the idea of promoting mutual attendance by players of different geographical regions.  
 (More on Bylaws, Page 10)

# UCCC SECOND FALL OPEN



## 19 TURKEY OPEN 93

	NAME	RTG	R1	R2	R3	TOTAL
1	Anderson, Hans L.	1680	L 5	BYE	W 4	2
2	McBroom, William	1641	W 7	D 4	D 3	2
3	Moore, Sherwood	1559	D 4	W 7	D 2	2
4	Carpenter, Romie G.	1800	D 3	D 2	L 1	1
5	Protic, Jovan	UNR	W 1	U	U	1
6	McCourt, Daniel J.	1730	U	U	W 7	1
7	Calger, Steven A.	UNR	L 2	L 3	L 6	0

### GREG NOWAK WINS HUGE TURKEY OPEN

- REPORT BY SHERWOOD MOORE -

Greg 'The Octopus' Nowak finished with 4.5 points, to win the TURKEY OPEN outright.

Darren Stacey took second place on tie-breaks over Paul Motta. Both earned 4.0 points.

Best Under 1900 was also captured by Darren. So keep your eyes open - the kid is back with a vengeance!

Greg Nowak picked up \$100 for his weekend work, and \$75 was split between Darren & Paul.

Other prize wins were Arman Goplen - Best Under 1700 (\$15), Nathan Fewel - Best Under 1500 (\$10) plus the Biggest Upset plaque. Nathan's win over Romie Carpenter was a 329 point upset, knocking Ron Erickson out of the plaque hunt ( Ron's win over Paul Svelmoe was a 314 point upset ).

Besides Darren, Gordon Shuck also returned to playing chess. It is great to have these gentlemen back.

Thanks to all for playing, especially those who traveled from out of town. Also, thanks to Rudy Katzl and Dan McCourt for being housemen. Thanks to Bill McBroom, Romie Carpenter and Tom Mostad for their help in cleaning up, and to Dave Shughart, who kept the tournament director from running out into the street when the pairings wouldn't work!

	NAME	RTG	R1	R2	R3	R4	R5	TOTAL
1	Nowak, Greg	2222	W12	W22	W13	W 3	D 2	4.5
2	Stacey, Darren	1834	W27	W17	W15	D 8	D 1	4
3	Motta, Paul S.	2000	W23	W16	W14	L 1	W 8	4
4	Shughart, David W.	1801	W25	D 5	D22	W 9	D 6	3.5
5	Svelmoe, Paul	2058	W20	D 4	L 8	W15	W17	3.5
6	Goplen, Arman D.	1657	W10	L14	W29	W13	D 4	3.5
7	Jensen, J. Michael	1951	W 9	H	H	D12	W14	3.5
8	Erickson, Ron	1744	W32	D33	W 5	D 2	L 3	3
9	Fewel, Nathan	1471	L 7	W24	W16	L 4	W22	3
10	Martinez, Michael	UNR	L 6	W30	D19	H	W28	3
11	Svelmoe, Stephan J.	1854	D26	L15	H	W27	W12	3
12	Duke, David	1635	L 1	W21	W18	D 7	L11	2.5
13	Fabian, Steve	1830	W29	W19	L 1	L 6	D20	2.5
14	Skovron, James J.	1827	W30	W 6	L 3	D17	L 7	2.5
15	Comer, Brian	UNR	W18	W11	L 2	L 5	D16	2.5
16	Mostad, Thomas	1660	W24	L 3	L 9	W30	D15	2.5
17	Anderson, Hans L.	1680	W28	L 2	W23	D14	L 5	2.5
18	Shuck, Gordon	1758	L15	W26	L12	W23	D19	2.5
19	McBroom, William	1655	W34	L13	D10	D22	D18	2.5
20	Yunker, Gary	1631	L 5	W25	L31	W29	D13	2.5
21	Griffin, David	1118	L22	L12	W34	H	W29	2.5
22	Carpenter, Romie G.	1800	W21	L 1	D 4	D19	L 9	2
23	Rajala, Robert J.	1558	L 3	W32	L17	L18	W27	2
24	Luther, Larry W.	UNR	L16	L 9	W25	L26	W32	2
25	Yunker, Jeremy	1130	L 4	L20	L24	W32	W30	2
26	Price, Donald M.	1333	D11	L18	L30	W14	H	2
27	Fewel, Randy	1290	L 2	W28	H	L11	L23	1.5
28	Doulas, Nick J.	UNR	L17	L27	D32	W34	L10	1.5
29	Gisselbeck, Donald	1250	L13	W34	L 6	L20	L21	1
30	Jacobs, Carl C.	1234	L14	L10	W26	L16	L25	1
31	McCourt, Daniel	1730	U	U	W20	U	U	1
32	Calger, Stephen	UNR	L 8	L23	D28	L25	L24	0.5
33	Katzl, Rudolf	2000	U	D 8	U	U	U	0.5
34	Moore, Grant C.	UNR	L19	L29	L21	L28	U	0

## NOVEMBER SATURDAY ARENA OPEN

	NAME	RTG	R1	R2	R3	R4	TOT
1	Long, Michael	1809	W13	W3	D5	W6	3.5
2	Brennan, Les	1752	W10	W6	D9	W5	3.5
3	Suits, Thad	1966	W11	L1	W12	W9	3
4	Loy, Jim	1923	L8	W14	W13	W10	3
5	Matous, Ron	1819	W14	W8	D1	L2	2.5
6	Mayer, Zygmund	2088	W7	L2	W8	L1	2
7	Scarff, Steven R.	1735	L6	L10	W14	W12	2
8	Duke, David	1635	W4	L5	L6	W13	2
9	Smith, Kevin	1190	H	W12	D2	L3	2
10	Hearn, Allen	UNR	L2	W7	W11	L4	2
11	Goplen, Arman	1657	L3	L13	L10	W14	1
12	Mayer, Eriel	1126	BYE	L9	L3	L7	1
13	Steinhof, Michael	UNR	L1	W11	L4	L8	1
14	Hull, Robert	UNR	L5	L4	L7	L11	0

Sunday's action was a bit too risky for some of those who lost rating points on Saturday, although as it turned out, there weren't really any significant upsets scored at the Andromedid.

The computer pairing software seemed to give the top boards relatively light pairings, especially in the later rounds, resulting in a four-way tie for the winnings.

Over the course of the weekend, the two events offered nine fully-rated games which served to enhance the ratings of some, and to whittle away at the ratings of others. The Bozeman folks plan to do it again. It's there if you want it.

## ANDROMEDID ACTION OPEN

	NAME	RTG	R1	R2	R3	R4	R5	TOTAL
1	Loy, Jim	1923	D5	W9	W6	D2	W8	4
2	Matous, Ron	1819	W7	W3	W4	D1	D5	4
3	Long, Michael	1809	W9	L2	BYE	W5	W6	4
4	Brennan, Les	1752	W8	W6	L2	BYE	W7	4
5	Scarff, Steve	1735	D1	BYE	W7	L3	D2	3
6	Price, Don	1333	BYE	L4	L1	W8	L3	2
7	Steinhof, Michael	UNR	L2	W8	L5	W9	L4	2
8	Hull, Robert	UNR	L4	L7	W9	L6	L1	1
9	Stauber, Craig	UNR	L3	L1	L8	L7	BYE	1

## FOUR SCORE OPEN

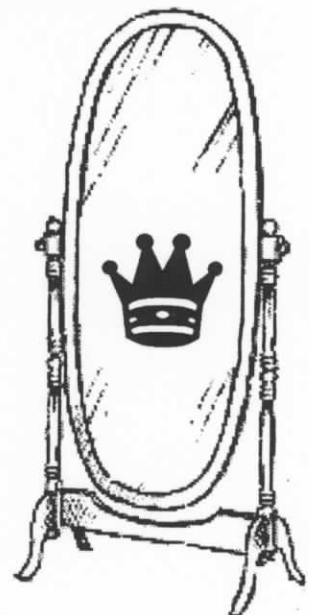
	NAME	RTG	1	2	3	4	5	TOTAL
1	Brennan, Les	1752	--	D	W	W	W	3.5
2	Duke, David	1635	D	--	W	W	W	3.5
3	Hull, Robert	UNR	L	L	--	W	W	2
4	Kennedy, John	1459	L	L	L	--	W	1
5	Madler, Steve	UNR	L	L	L	L	--	0

Not one of Colstrip's biggest hits, but four games and a chance to win some money, which three of the five did! Brennan & Duke took away \$15 each, which was 50% more than the entrance fee. Robert Hull left for home with \$10 for Best Unrated performance, winning his entrance fee back! Nobody got rich, but they played their hearts out!

The Grob suffered a setback this Saturday as Long & Brennan found ways around the eccentric opening system with advantage. Having held the tournament's highest rated player to two for four games, Michael and Les ended up sharing top honors in Bozeman's new G/90 Saturday format, which attracted 14 sudden-death aficionados into the "Arena" for a serious exercise in time management.

The G/90 format was enjoyed by all - well, almost all - and will likely become known as a Bozeman regular. The nine-games-in-two-days format offers a lot of fun and plenty of time for returning home - for travelers.

Chess tournaments in the Student Union Building afford the players with a coffee / cookie shop just down the hall, and a sandwich / salad shop down another hall. Bozeman can be fun for the family also. Have they seen the Museum of the Rockies? Have you? Better do it!



# UCCC THIRD FALL OPEN

	NAME	RTG	R1	R2	R3	TOTAL
1	Nowak, Greg	2222	W 8	W 2	W 5	3
2	Jensen, J. Michael	1951	W10	L 1	W 6	2
3	Shughart, David	1801	L 4	W 9	W 8	2
4	Protic, Jovan	UNR	W 3	L 5	W 9	2
5	Carpenter, Romie	1800	BYE	W 4	L 1	1.5
6	McCourt, Dan	1730	D 9	W 7	L 2	1.5
7	Calger, Steve	UNR	BYE	L 6	X10	1.5
8	McBroom, William	1655	L 1	W10	L 3	1
9	Shughart, Max	UNR	D 6	L 3	L 4	0.5
10	Gray, Richard	1493	L 2	L 8	F 7	0



Montana Chess Association

## WE NOW HAVE A NEW SUPPLY OF MCA MEMBERSHIP CARDS

If you've been waiting for one, it should be getting to you soon. Tournament directors will be getting a supply also. Thanks for your patience.

## WE WELCOME OUR NEW MEMBERS

The Montana Chess Association is happy to welcome the new members to our organization. We are eager to help you get the most out of your chess and answer any questions you might think of.

You will notice that the experienced players go over their games post-mortem. This way, losses become opportunities to learn. We all lose. Even the world champion loses, but all serious players wish to learn what they did wrong, and post-game analysis is one of the most important methods they use. Kasparov does it. This way he hopes to avoid making the same mistake later. If you don't already make it a habit to discuss your games post-mortem with your opponents, start doing it and you'll pick up a lot along the way. You must learn from your losses. I've never met a chess player who was unwilling to explain how he/she beat me, or how I managed to dig my own grave.

Of course, study is the one most important methods of improving your game. If you want to play better chess, get the right book or books, and look for those chess secrets as if you were digging for gold. Ask some of the better players which books might be best for you, or which books they read.

Also, if there is any chess subject that the newsletter could address for you please advise. - Ed.

## DECEMBER SATURDAY ARENA OPEN

	NAME	RTG	R1	R2	R3	R4	TOTAL
1	Johansson, Jan	2051	W10	W 6	D 3	W 2	3.5
2	Loy, Jim	1919	W 8	W 4	W 5	L 1	3
3	Matous, Ronald	1882	W11	W 7	D 1	D 6	3
4	Scarff, Steve	1718	W12	L 2	BYE	W 9	3
5	Duke, David	1635	W 9	BYE	L 2	W 8	3
6	Carr, John	1871	W13	L 1	W 7	D 3	2.5
7	Smith, Kevin	1270	BYE	L 3	L 6	W11	2
8	Hull, Robert	UNR	L 2	W12	W10	L 5	2
9	Steinhof, Michael	UNR	L 5	W11	W12	L 4	2
10	Price, Donald	1354	L 1	W13	L 8	H---	1.5
11	Crooks, Justin	UNR	L 3	L 9	W13	L 7	1
12	Arnot, Paul	UNR	L 4	L 8	L 9	W13	1
13	Crooks, Sara	UNR	L 6	L10	L11	L12	0

### Smothered Mate



1. Nf7+ Kg8
2. Nh6+ Kh8
3. Qg8+ Rxc8
4. Nf7++

### Legal's Mate



1. Nxe5 Bxd1??
2. Bxf7+ Ke7
3. Nd5++

### Knight Fork Trick



1. Nxe5 Nxe5
2. d4

Experienced players know these positions well. If they are new to you, go over them a few times - you may get a chance to use them sometime.

# RECENT GAMES

Protic UNR Anderson 1680  
 UCCC Second Fall Open  
 10/93 Round 1  
 Queen's Gambit Declined

1. d4 Nf6 2. c4 e6 3. Nf3 d5 4. a3  
 Be7 5. Bf4 O-O 6. Nc3 b6 7. e3 Bb7  
 8. Be2 Nh5 9. Be5 f6 10. Bg3 Ng3  
 11. hg3 c6 12. Qc2 g6 13. O-O-O  
 Rf7 14. Rh2 Nd7 15. Rdh1 Nf8 16.  
 Bd3 Rc8 17. g4 c5



18. Bxg6! hg6 19. Rh8 Kg7 20.  
 R1h6 f5 21. Ne5 cd4 22. Ng6 Bg5  
 23. Nf8 Bh6 24. Rh6 Kh6 25. Nxe6



Qf6?? 26. g5 Black resigns.

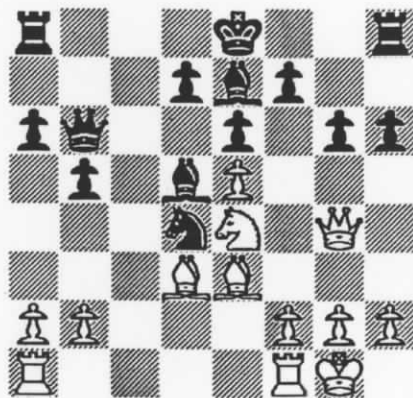
Moore 1559 Calger UNR  
 UCCC Second Fall Open  
 10/7/93 Round 2  
 Queen's Pawn Opening

1. d4 d5 2. Nf3 Bf5 3. e3 Nf6 4.  
 Nbd2 Nc6 5. c3 e6 6. Nh4 Ne4 7.  
 Nf5 ef5 8. Ne4 fe4 9. Be2 f5 10. c4  
 11. O-O Nb4 12. c5 O-O-O 13.  
 Nc6 14. Bd2 h5 15. b4 h4

16. b5 h3 17. g3 Na5?? 18. Bxa5  
 Qf6 19. Qb3 Rh6 20. Rfc1 Rd7? 21.  
 c6 Rd6 22. cb7 Kb7 23. Rc7 Kb8  
 24. Rac1 Be7 25. Rc8 Kb7 26. R1c7  
 Mate.

Motta 2000 Rajala 1558  
 Turkey Open  
 11/6/93 Round 1  
 St. George Defense

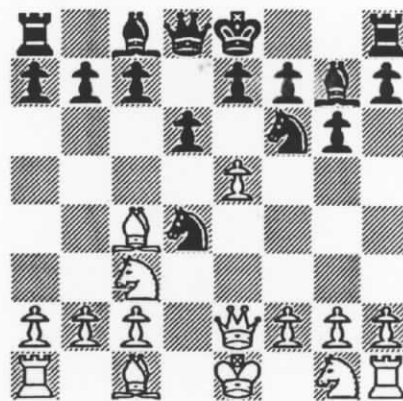
1. d4 b5 2. e4 a6 3. Bd3 e6 4. Nh3  
 c5 5. c3 Bb7 6. O-O h6 7. Be3 Nf6  
 8. Nd2 Qb6 9. e5 Nd5 10. Qh5 g6  
 11. Qg4 Nc6 12. Ne4 Be7 13. Nf4  
 cd4 14. cd4 Nd4 15. Nxd5!  
 (preparing for white's 17th move)  
 15... Bxd5



16. Bxd4 Qxd4? 17. Nd6+ Bxd6 18.  
 Qxd4 Be7 19. Be4 Be4 20. Qe4 O-O  
 21. Rfd1 Ra7 22. Qe3 Rc7 23. Qh6  
 Rc2 24. Rd3 Rfc8 25. Rc3 Bf8 26.  
 Rc8 Rc8 27. Qd2 Rc5 28. Qd7 Re5  
 29. Rd1 Bc5 30. h4 Re2 31. Qc8  
 Bf8 32. Rd8 Re1 33. Kh2 Kg7 34.  
 Rf8 Re4 35. Kg3 Rc4 36. Rg8 Kf6  
 37. Qd8 Kf5 38. Qg5 Ke4 39. f3  
 Kd3 40. Rd8 Rd4 41. Rd4 Kd4 42.  
 b4 Kc3 43. a3 Kb3 44. Qe3 Ka2 45.  
 Kf2 Black resigns.

Stacey 1834 Anderson 1680  
 Turkey Open  
 11/6/93 Round 2  
 Pirc Defense

1. e4 d6 2. d4 Nf6 3. Nc3 g6 4. Bc4  
 Bg7 5. Qe2 Nc6 6. e5! Nxd4  
 - see diagram next column -



The following Queen sacrifice has been Motta's operandi for years. The first time Paul ever tried this sac resulted in a win over a senior master (2371) at the Hawaiian State Qualifier in 1985. Since that time, he has never lost a game or even drawn using this variation. More recently, he beat Darren Stacey with it in 1990 at the Crocus Open. Seems Darren was duly impressed, for he now lets his own queen go (in exchange for three black pieces, of course).

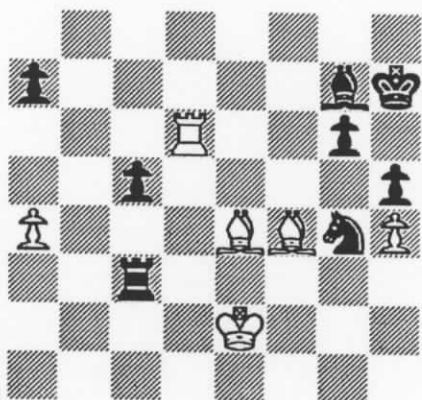
Would you do this?

- Observe -

7. exf6! Nxe2 8. fxg7 Rg8 9.  
 Ngxe2 Rxc7 10. Bg5 c6  
 11. O-O-O Qa5 12. Bh6 Rg8 13. Bd2  
 Qc5 14. Bb3 Be6 15. Ne4 Qe5 16.  
 N2g3 Bb3 17. ab3 d5 18. f4 Qc7  
 19. Ng5 h6 20. Nf3 a5 21. Rhe1 a4  
 22. b4 a3 23. ba3 Ra3 24. Kb2 Ra4  
 25. Ra1 Ra1 26. Ra1 f6 27. Nd4  
 Qb6 28. Nb3 Qf2 29. Re1 Qg2 30.  
 Re2 Qh3 31. Nc5 Qc8 32. Ne6 Kf7  
 33. f5 g5 34. Re3 b6 35. Ra3 Qb7  
 36. Ne2 Ra8 37. N2d4 Ra3?? 38.  
 Nd8 Ke8 39. Nb7 Ra7 40. Nd8!! c5  
 41. N4e6 cb4 42. Bb4 Kd7 43. Be7  
 Ke7? 44. Nc6 Kd6 45. Na7 Ke5 46.  
 Ng7 h5 47. Kc3 h4 48. Kd3 g4 49.  
 Nc6 Kf4 50. Ne7 Kf3 51. Nd5 Kg2  
 52. Nf6 Kh2 53. Ng4 Kg3 54. Ne3  
 h3 55. f6 h2 56. Nf1+ Black  
 resigns.

**Erickson 1744 P. Svelmoe 2058**  
**Turkey Open**  
**11/6/93** **Round 3**  
**King's Indian Attack**

1. Nf3 c5 2. e4 Nc6 3. g3 g6 4. Bg2 Bg7 5. O-O e5 6. d3 Nge7 7. c3 O-O 8. a4 d6 9. Na3 h6 10. Nc4 Be6 11. Ne3 Kh7 12. Ne1 f5 13. f4 Qd7 14. Nf3 ef4 15. gf4 fe4 16. de4 Rf4 17. Nd5 Rf7 18. Qd3 Raf8 19. Nh4 Rf1 20. Bf1 Bd5 21. ed5 Qg4 22. Ng2 Ne5 23. Be2 Qg2 24. Kg2 Nd3 25. Bd3 Nd5 26. Be4 Nf6 27. Bb7 Ng4 28. Kg3 h5 29. Bf4 Ne5 30. h4 Rb8 31. Be4 Rb2 32. Rd1 Rb3 33. Rd6 Rc3 34. Kf2 Ng4+ 35. Ke2



35... Re3+?? 36. Bxe3 Black resigns.

**Motta 2000 Nowak 2222**  
**Turkey Open**  
**11/7/93** **Round 4**  
**French Defense**

1. d4 e6 2. e4 d5 3. e5 c5 4. c3 Qb6 5. Nf3 Bd7 6. h4 h6 7. Be2 Bb5 8. Qb3 Be2 9. Qb6 ab6 10. Ke2 h5 11. Na3 Nc6 12. Nc2 Nge7 13. Bg5 cd4 14. cd4 Nf5 15. Rhd1 Be7 16. Ne3 Ne3 17. Be3 Kd7 18. Rdc1 Ra4 19. Rc3 Rha8 20. a3 b5 21. Rac1 White's flag falls.

**Rajala 1558 Shuck 1758**  
**Turkey Open**  
**11/7/93** **Round 4**  
**Benko Opening**

1. g3 d5 2. Bg2 e5 3. c4 Nf6 4. cd5 Nd5 5. Nc3 Nc3 6. bc3 Nc6 7. d3 ld7 8. Nf3 Bd6 9. O-O O-O 10. Rb1 Qc8 11. Re1 Rb8 12. Qc2 Re8

13. Nd2 b6 14. Ne4 Be7 15. e3 f5 16. Nd2 Na5 17. Nf3 Bd6 18. e4 fe4 19. Re4 Bc6 20. Re1 Qb7 21. Qe2 Rf8 22. Nh4 Bg2 23. Ng2 Rf7 24. Qg4 Qf3 25. Qf3 Rf3 26. Be3 Nb7 27. Nh4 Rf7 28. Kg2 Rbf8 29. Rb2 Nc5 30. Rd2 Na4 31. Rc1 a5 32. Kg1 g6 33. Ng2 Nc5 34. Bh6 Re8 35. Re1 e4 36. de4 Re4 37. Re4 Ne4 38. Re2 Re7 39. Bf4 Kf8 40. c4 Nc3 41. Re7 Ke7 42. Bd6 Kd6 43. a3 Nb1 44. a4 Na3 45. Ne3 Kc5 46. f4 Nc4 47. Nc4 Kc4 48. g4 Kd4 49. Kf2 Ke4 50. Kg3 c5 51. h4 c4 52. h5 c3 53. f5 gf5 54. g5 c2 55. g6 hg6 56. h6 c1=Q 57. h7 Qh6 58. Kg2 Qh7 59. Kg3 Qh5 White resigns.

**Goplen 1657 Shughart 1801**  
**Turkey Open**  
**11/7/93** **Round 5**  
**Philidor Defense**

1. e4 e5 2. Nf3 d6 3. d4 Bg4 4. de5 Nd7 5. ed6 Bd6 6. Be3 Ngf6 7. Nc3 O-O 8. Qd3 Bf3 9. gf3 Ne5 10. Qe2 Bb4 11. Bd2 Qe7 12. O-O-O a5 13. Rg1 a4 14. Nd5 Nd5 15. ed5 Bd2 16. Rd2 Rfe8 17. f4 Ng6 18. Qe7 Re7 19. f5 Re1 20. Rd1 Rd1 21. Kd1 Nf4 22. c4 Rd8 23. Rg4 Nh5 24. Kc2 Nf6 25. Rd4 c5 Draw agreed.

**Fewel 1471 Carpenter 1800**  
**Turkey Open**  
**11/7/93** **Round 5**  
**King's Indian Attack**

1. Nf3 g6 2. g3 Bg7 3. Bg2 e5 4. d3 d6 5. O-O f5 6. e4 Nf6 7. Nc3 O-O 8. Bg5 Nc6 9. Qc1 Ne7 10. Bh6 Rf7 11. Bg7 Rg7 12. Qg5 fe4 13. de4 Rf7 14. Rad1 Bd7 15. h4 Qf8 16. h5 Bc6 17. hg6 Ng6 18. Nh4 Kg7 19. f4 Kh8 20. Ng6 hg6 21. Qg6 Rg7 22. Qh6 Rh7 23. Qf8 Rf8 24. fe5 de5 25. Rf5 Rg7 26. Rdf1 Rgf7 27. Nd5 Kg7 28. Rxe5 Black resigns.

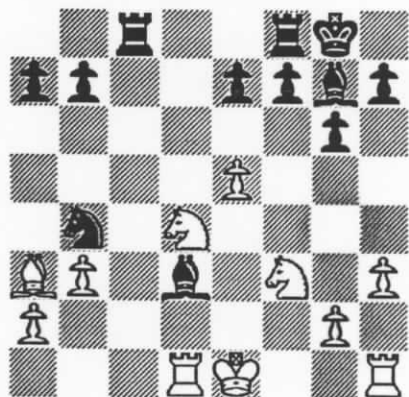
**McBroom 1655 Shuck 1758**  
**Turkey Open**  
**11/17/93** **Round 5**  
**Torre Attack**

1. d4 d5 2. Nf3 Nf6 3. Bg5 Bg4 4. e3 Ne4 5. Be2 Ng5 6. Ng5 Bd7 7. Nd2 e6 8. Ngf3 c5 9. c3 Nc6

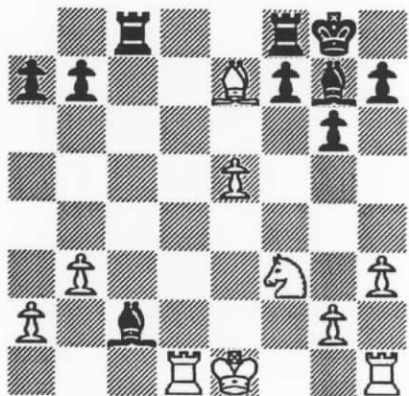
10. O-O Be7 11. dc5 Bc5 12. Nb3 Be7 13. Nbd4 O-O 14. Nc6 Bc6 15. Nd4 Be8 16. Bb5 e5 17. Be8 Re8 18. Nf5 Bf6 19. Qb3 Qd7 20. Ng3 Qc6 21. Rfd1 Rad8 22. Rd2 Rd7 23. Rad1 Red8 24. Ne2 b5 25. Qb4 Qc4 26. Qc4 bc4 27. f3 Kf8 28. Kf2 Ke7 29. g3 g5 30. f4 Ke6 31. fe5 Be5 32. Nd4 Bd4 33. ed4 Rd6 34. Re1 Kf6 35. g4 Re6 36. Rde2 Rde8 37. Re6 Re6 38. Re6 fe6 39. Ke3 a5 40. b3 cb3 41. ab3 e5 42. de5 Ke5 43. h3 Kd6 44. Kd4 h6 Draw agreed.

**Loy 1923 Duke 1635**  
**Nov. Saturday Arena Open**  
**11/13/93** **Round 1**  
**English Opening**

1. c4 Nf6 2. Nc3 g6 3. e4 d6 4. f4 Bg7 5. e5 de5 6. fe5 Ng4 7. d4 c5 8. Be2 Qd4 9. Qd4 cd4 10. Nb5 Na6 11. Bg4 Bg4 12. h3 Be6 13. Nd4 Bc4 14. Ngf3 O-O 15. b3 Bd3 16. Bb2 Rac8 17. Rd1 Nb4 18. Ba3



18... Nc2+ 19. Nxc2 Bxc2 20. Bxe7



Bxd1 21. Bxf8 Bxf3 22. Bxg7 Rc1+ White resigns.

Brennan 1752 Z. Mayer 2088  
 Nov. Saturday Arena Open  
 11/13/93 Round 2  
 Macho Grob

1. e4 g5 2. d4 h6 3. f4 g4 4.  
 Nc3 (4.Qxg4 d5 with tempo) d6 5.  
 Bc4 Bg7 6. Be3 h5 7. Nge2  
 h4 8. f5 Nd7 9. Nf4 Ngf6 10.  
 Be2 g3 11. hg3 hg3 12. Rh8  
 Bh8 13. Bh5



Nb6 14. Ne6 Bxe6 15. fe6  
 Nc4 16. Bxf7+ Kf8 17. Bh6+  
 Bg7 18. Qc1

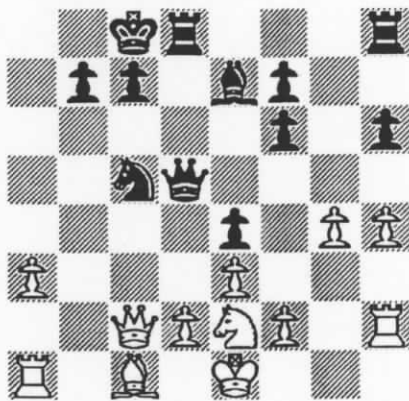


Nh7 19. Qf4 c6 20. Qxg3 (with  
 mate coming on either g7 or g8)  
 Black resigns.

Z. Mayer 2083 Long 1809  
 Nov. Saturday Arena Open  
 11/13/93 Round 4  
 The Grob

1. g4 e5 2. c4 Bc5 3. h4 d6 4. Bg2  
 Nc6 5. e3 Be6 6. b3 Qd7 7. Bf3 h6  
 8. Nc3 Nf6 9. Nd5 O-O-O? 10. Nf6  
 Jf6 11. a3 d5 12. b4 Be7 13. cd5  
 Bd5 14. b5 Nb8 15. Qa4 a6

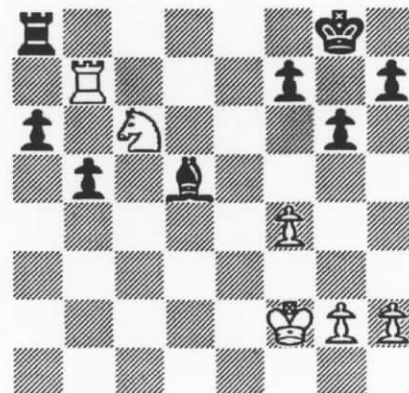
16. Bd5 Qd5 17. ba6 Na6 18. Rh2  
 Nc5! 19. Qc2 e4! 20. Ne2??



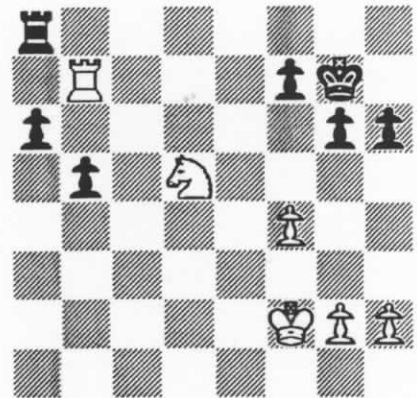
Qe5 21. Rg2 Qxa1 22. Nf4 Nd3 23.  
 Nd3 ed3 24. Qb2 Qb2 25. Bb2 Rhg8  
 26. f4 Rd6 27. Bc3 Ra6 28. Kf2  
 Ra3 29. Kf3 b5 30. Ke4 b4 31. Bd4  
 b3 32. Rg1 Ra2 33. Kd3 Ba3 34.  
 Bf6 b2 35. g5 hg5 36. fg5 Kd7 37.  
 h5 Ra1 38. Ra1 ba1=Q 39. Ba1 Rg5  
 and black went on to win  
 (incomplete score sheets).

Scarff 1735 Loy 1923  
 Andromedid Action Open  
 11/14/93 Round 1  
 Smith-Morra Gambit

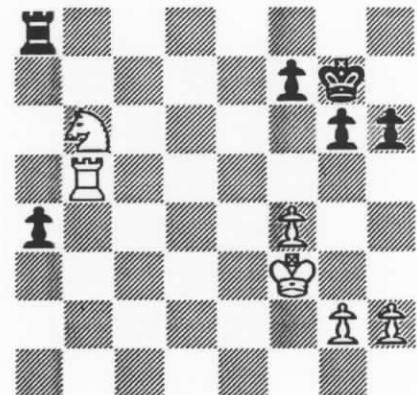
1. d4 c5 2. e4 cd4 3. c3 dc3  
 4. Nc3 g6 5. Nf3 Bg7 6. Qb3  
 d6 7. Bc4 e6 8. O-O Nf6 9.  
 Bg5 O-O 10. Rad1 Qe7 11.  
 Rfe1 Nc6 12. Qa3 d5 13. Qe7  
 Ne7 14. ed5 Ned5 15. Nd5  
 Nd5 16. Bd5 ed5 17. Rd5 Bb2  
 18. Re2 Bg7 19. Re7 b6 20.  
 Bf4 Be6 21. Rd6 Ba2 22. Be5  
 Be5 23. Ne5 Be6 24. Rc6  
 Rfc8 25. f4 Rc6 26. Nc6 a6  
 27. Rb7 b5 28. Kf2 Bd5??



29. Ne7+ Kg7 30. Nxd5 h6



31. Kf3 (31. Nc7 followed by 32.  
 Nxa6 - but then, this is action  
 chess!) a5 32. Rxb5 a4 33.  
 Nb6??



Rb8 34. Rb2 a3 35. Ra2 Rxb6  
 36. Rxa3 Kf6 37. g4 g5 38.  
 Kg3 Kg6 39. h4 f6 40. h5 Kg7  
 41. Ra7 Kh8 42. Ra8 Draw  
 agreed

Hull UNR Price 1333  
 Andromedid Action Open  
 11/14/93 Round 4  
 Queen's Pawn Opening

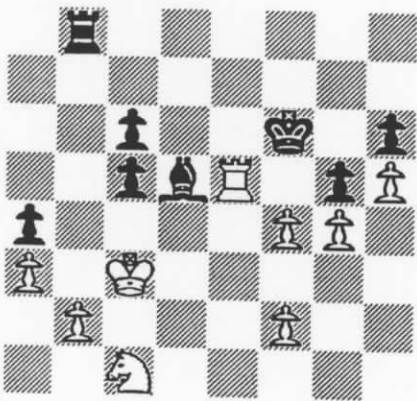
1. d4 Nf6 2. Nf3 d5 3. Bf4 e6 4. Nc3  
 Bb4 5. a3 Bc3 6. bc3 O-O 7. e3 c6  
 8. Bd3 Qa5 9. O-O Qc3 10. Be5 Ng4  
 11. h3 Ne5 12. Ne5 Nd7 13. Nf3 Nf6  
 14. a4 b6 15. Rb1 Qa5 16. Re1 Qa4  
 17. Ra1 Qb4 18. Ne5 Qe7 19. Nc6  
 Qc7 20. Ne5 a5 21. Qe2 a4 22. Bb5  
 a3 23. Nc6 Ne4 24. Qd3 Bb7 25.  
 Nb4 and Black went on to win -  
 (incomplete score sheets).

**Matous 1819** **Loy 1923**  
**Andromedid Action Open**  
 11/14/93 **Round 4**  
**Colle System**

1. d4 Nf6 2. Nf3 d5 3. e3 g6 4. Bd3 Bg7 5. Nbd2 O-O 6. O-O Nbd7 7. c3 c5 8. b4 cd4 9. cd4 Nb6 10. a4 a5 11. b5 Bg4 12. Qb3 Rc8 13. Ne5 Nbd7 14. Ng4 Ng4 15. Ba3 Ngf6 16. Rac1 Re8 17. Nf3 e6 18. Rc8 Qc8 19. Rc1 Qb8 20. b6 Rc8 21. Rc8 Qc8 22. h3 Qc6 23. Bb5 Qb6 24. Ne5 Ne5 25. Bc5 Qc7 26. de5 Qc5 27. ef6 Bf6 28. Qd3 b6 29. g3 e5 30. e4 d4 31. Qf3 Be7 32. h4 Qc3 33. Kg2 Qf3 34. Kf3 Bb4 35. Ke2 f6 Draw agreed.

**Protic UNR** **D Shughart 1801**  
**UCCC Third Fall Open**  
 10/27/93 **Round 1**  
**Slav Defense**

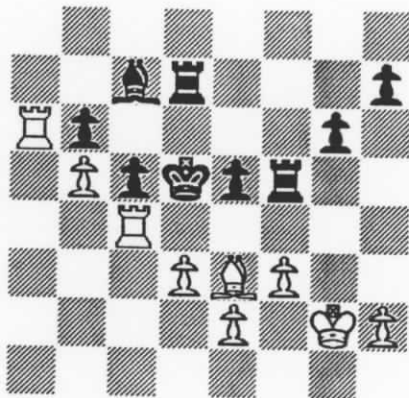
1. d4 d5 2. c4 c6 3. Nc3 Nf6 4. Bf4 Nbd7 5. Nf3 e6 6. a3 Be7 7. e3 Ne4 8. Ne4 de4 9. Nd2 f5 10. Qh5 g6 11. Qh6 Bf8 12. Qh3 Bg7 13. c5 e5 14. Bh6 Qf6 15. Nb3 f4 16. Bg7 Qg7 17. Qe6 Qe7 18. Qe7 Ke7 19. de5 Ne5 20. ef4 Nd3 21. Bd3 ed3 22. Kd2 Bf5 23. Rae1 Kf6 24. Re3 Rae8 25. Rhe1 Re3 26. Re3 Rd8 27. h3 b6 28. g4 Be6 29. Nc1 bc5 30. Rd3 Rb8 31. Kc3 Bd5 32. Re3 a5 33. Re5 h6 34. h4 a4 35. h5 g5??



36. Rf5+ Kg7 37. fxg5 hxg5 38. Rxc5+ Kh7 39. f4 Rf8 40. f5 Rf6 41. Nd3 c4 42. Ne5 c5 43. Nc4 Bg8 44. Rg6 Rg6 45. hg6 Kg7 46. Nb6 Bb3 47. Nd7 Bd1 48. Ne5 Kf6 49. Kd2 Bb3 50. Nd7 Kg5 51. Nc5 Bd5 52. Na4 Kg4 53. f6 Black resigns.

**Nowak 2222** **Jensen 1961**  
**UCCC Third Fall Open**  
 11/4/93 **Round 2**  
**Benko Opening**

1. g3 c5 2. Bg2 Nc6 3. c4 g6 4. Nc3 Bg7 5. a3 e5 6. Rb1 a5 7. d3 Nge7 8. Nf3 O-O 9. O-O d6 10. Ne1 Be6 11. Nc2 d5 12. cd5 Nd5 13. Ne3 Nce7 14. Ne4 Rc8 15. Ng5 Ne3 16. Ne6 Nd1 17. Nd8 Rfd8 18. Rd1 Rc7 19. Bd2 b6 20. Rdc1 Rdc8 21. Rc2 Nc6 22. Bc6 Rc6 23. Rbc1 Kf8 24. b4 ab4 25. ab4 Ke8 26. Be3 Bf8 27. b5 R6c7 28. Ra2 Rb7 29. g4 Kd7 30. g5 Be7 31. Rc4 f6 32. gf6 Bf6 33. Kg2 Re8 34. Ra6 Bd8 35. Ra8 Bc7 36. Rca4 Rbb8 37. R8a7 Kd6 38. Rh4 Re7 39. Bg5 Rf7 40. Re4 Rbf8 41. f3 Bb8 42. Ra6 Bc7 43. Be3 Kd5 44. Bh6 Rd8 45. Be3 Rdd7 46. Rc4 Rf5



47. Bxc5!! bxc5 48. e4 Mate.

**Nowak 2222** **Carpenter 1800**  
**UCCC Third Fall Open**  
 11/11/93 **Round 3**  
**Benko Opening**

1. g3 g6 2. Bg2 Bg7 3. c4 e5 4. Nc3 d6 5. d3 f5 6. Rb1 a5 7. Nf3 Nf6 8. O-O O-O 9. a3 Nc6 10. b4 ab4 11. ab4 e4 12. de4 fe4 13. Ng5 Bf5 14. Nce4 Qe7 15. Rb3 Ra1 16. Nc3 Rfa8 17. Nd5 Nd5 18. Qd5 Kh8 19. f4 Rc1 20. Rc1 Nb4 21. Qb7 Bd4 22. Kh1 Ra2 23. e4 h6 24. ef5 hg5 25. Rxb4 Black resigns.

**Hull UNR** **Kennedy 1459**  
**Four Score Open**  
 11/20/93 **Round 2**  
**Queen's Pawn Opening**  
 (next column)

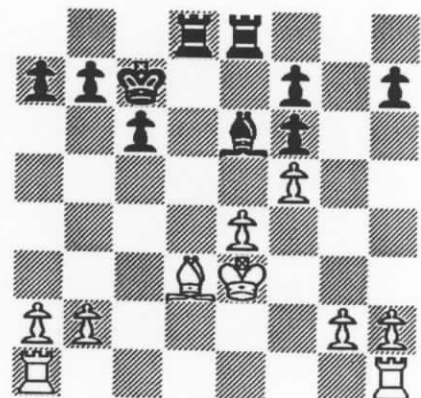
1. d4 Nf6 2. Nc3 d5 3. Bf4 a6 4. Nf3 Bg4 5. e3 e6 6. Be2 Bb4 7. O-O Nbd7 8. h3 Bf3 9. Bf3 Bc3 10. bc3 O-O 11. Rb1 b5 12. Re1 c5 13. e4 de4 14. Be4 Ne4 15. Re4 Qh4 16. Qf3 Qf6 17. Qg3 Qg6 18. Qf3 f5 19. Re2 Rfe8 20. Rbe1 Nf8 21. d5 ed5 22. Re8 Re8 23. Re8 Qe8 24. Qd5 Qf7 25. Qc5 Qa2 26. Bd6 Qf7 27. Qc8 a5 28. Qc5 Nd7 29. Qb5 Qe6 30. Bf4 Kf7 31. Qa5 h6 32. g3 g5 33. Bd2 Kf6 34. Qd8 Kg6 35. c4 Nc5 36. Qd5 Qd5 37. cd5 Ne4 38. Be3 Kf6 39. c4 Ke5 Black's flag falls.

**Madier UNR** **Duke 1635**  
**Four Score Open**  
 11/20/93 **Round 2**  
**Je ne sais quoi Attack**

1. Nf3 g6 2. Nc3 c5 3. e4 Nc6 4. Bc4 Bg7 5. Ng5 e6 6. Qf3 Qg5 7. Qf7 Kf7 8. d3 Qg2 9. Rf1 Nd4 10. Rb1 Nc2 11. Ke2 Nd4 12. Kd2 Qf1 13. b3 Bh6 14. f4 Bf4 Mate.

**Brennan 1752** **Duke 1635**  
**Four Score Open**  
 11/20/93 **Round 3**  
**Sicilian Defense**

1. e4 c5 2. Nf3 Nc6 3. c3 e5 4. d4 ed4 5. cd4 cd4 6. Nd4 Nf6 7. Nc6 dc6 8. Qd8 Kd8 9. Bg5 Bb4 10. Nd2 Bd2 11. Kd2 Kc7 12. Bf6 gf6 13. Bd3 Be6 14. f4 Rad8 15. Ke3 Rhe8 16. f5



Bxf5 17. Rhf1 Bg6 18. Rf6 Rd6 19. Raf1 Rf6 20. Rf6 Kd7 21. g4 h5 22. g5 Re6 23. Rf4 b5 24. Be2 Re5 25. h4 a6 26. Bd3 Kd6 Draw agreed.



**Johansson 2051 Carr 1872**  
**December Saturday Arena Open**  
**12/11/93 Round 2**  
**King's Indian Attack**

1. e4 e6 2. d3 c5 3. Nf3 Nc6 4. g3  
 g6 5. Bg2 Bg7 6. O-O Nge7 7. Re1  
 d6 8. c3 e5 9. a3 a5 10. a4 O-O 11.  
 Na3 Be6 12. Nc4 d5 13. ed5 Bd5 14.  
 Nfe5 Ne5 15. Ne5 Bg2 16. Kg2 Qc7  
 17. Nc4 Nd5 18. Qf3 Nb6 19. Bf4  
 Qd8 20. Nd6 Qf6 21. Nb7 Nd7 22.  
 Qd5 Nb6 23. Qc5 Rfc8 24. Qb5 Bf8  
 25. d4 Nc4 26. b3 Nd6 27. Nd6 Bd6  
 28. Bd6 Qd6 29. Re3 Qf6 30. Rae1  
 Rcb8 31. Re8+ Black resigns.

**Matous 1882 Johansson 2051**  
**December Saturday Arena Open**  
**12/11/93 Round 3**  
**Torre Attack**

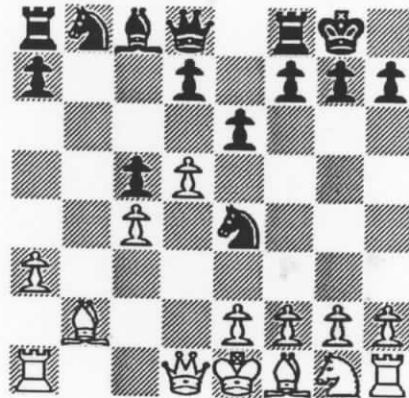
1. d4 Nf6 2. Nf3 g6 3. Bg5 Ne4 4.  
 Bf4 d6 5. Nbd2 Nf6 6. e4 Bg7 7. c3  
 Bg4 8. Be2 Nbd7 9. h3 Bf3 10. Bf3  
 e5 11. Be3 O-O 12. O-O Ne8 13.  
 Nb3 Qe7 14. Re1 c6 15. Qc2 Kh8  
 16. Rad1 b6 17. Qd2 a5 18. de5 Ne5  
 19. Be2 Nd7 20. Nd4 Rc8 21. f4 Nc5  
 . Bf3 Ne4 23. Be4 Qe4 24. Nf3  
 Qa4 25. b3 Qb5 26. Qf2 c5 27. g4  
 Nf6 28. c4 Qc6 29. Qg2 Rce8 30.  
 Nd2 Qg2 31. Kg2 Re6 32. Kf3 Rfe8  
 33. Bf2 Re1 34. Re1 Re1 35. Be1  
 Kg8 36. Bh4 Ne8 37. Ke4 Draw  
 agreed.

**Loy 1919 Duke 1635**  
**December Saturday Arena Open**  
**12/11/93 Round 3**  
**Larson's Opening**

1. b3 e5 2. Bb2 d6 3. e3 Nc6 4. Nf3  
 Nf6 5. c4 Bg4 6. Be2 Be7 7. O-O  
 Qd7 8. Nc3 O-O 9. d4 h6 10. d5 Nd8  
 11. e4 Qc8 12. h3 Bh5 13. Nd2 Be2  
 14. Qe2 g5 15. Rae1 Kg7 16. Nd1  
 Kg6 17. Ne3 b6 18. Nf5 Qd7 19. Nf3  
 Nb7 20. b4 Rh8 21. Nh2 Nh5 22.  
 Qg4 Nf6 23. Qf3 Nh7 24. Ng4 h5 25.  
 Nge3 f6 26. g4 Nf8 27. Bc1 Nd8 28.  
 Ng3 hg4 29. hg4 Nf7 30. Nef5 Nh6  
 31. Kg2 Nf5 32. gf5 Kf7 33. Rh1  
 7 34. Qh5 Kf8 Black resigns.

**Steinhof UNR Scarff 1718**  
**December Saturday Arena Open**  
**12/11/93 Round 4**  
**Quasi - Nimzo Indian**

1. d4 Nf6 2. c4 e6 3. Nc3 Bb4  
 4. Bd2 c5 5. d5 O-O 6. a3 Bc3  
 7. Bc3 b5 8. b3 bc4 9. bc4  
 Ne4 10. Bb2 ?? (10. Be2)



10... Qa5+ 11. Bc3 Qxc3+  
 12. Qd2

Nxd2 ( Steve said the pressures of  
 directing caused him to overlook the  
 mate in 5, starting with 12... Qxd2+  
**White resigns anyway.**

**Johansson 2051 Loy 1919**  
**December Saturday Arena Open**  
**12/11/93 Round 4**  
**Modern Defense**

1. e4 g6 2. Nf3 Bg7 3. g3 c5 4. Bg2  
 d6 5. d3 Nc6 6. O-O Bg4 7. h3 Bd7  
 8. Kh2 Nf6 9. c3 O-O 10. Be3 Qb6  
 11. Qc2 Rfc8 12. Nbd2 Nd4 13. Qb1  
 Ne6 14. Ng5 Bb5 15. a4 Bc6 16. f4  
 Qa6 17. g4 b6 18. f5 Nc7 19. Ngf3  
 Rf8 20. d4 Qb7 21. d5 Bd7 22. c4  
 a5 23. Qe1 Rae8 24. Qh4 Na6 25.  
 fg6 fg6 26. Ng5 h6 27. Ne6 Be6 28.  
 de6 g5 29. Bg5 hg5 30. Qg5 Qc8 31.  
 e5 de5 32. Qg6 Nc7 33. g5 Nh7 34.  
 Be4 Ng5 35. Qg5 Qe6 36. Rg1 Qf6  
 37. Qh5 Qf4+ 38. Kh1 Qh6?? 39.  
 Qxh6 Rf7 40. Rg7 Rg7 41. Rg1 Rg1  
 42. Kg1 Black resigns.

*"Chess, like love, like music, has the  
 power to make men happy."  
 - Dr. Siegbert Tarrasch*

# Thunder Lizard



**Games & Chess Club**  
 Fantasy Role-Playing and Miniature  
 Gaming, USCF Sanctioned Chess  
 Club, Chess Literature and Materials  
 and Japanimation Videos

575 1st Street  
 Idaho Falls, ID 83401  
 (208) 523-5117

Chess, anyone?  
 How about 7 days a week!  
 Need a chess book?  
 Choose from over 500 titles!

Also:  
 chess sets  
 chess clocks  
 score sheets  
 chess computers  
 chess software

Get on Thunder Lizard's  
 mailing list and receive  
 their mail-order catalog

## MCA GRAND PRIX POINT STANDINGS

As of the Andromedid  
 11/14/93

1. Johansson....26.48
2. Nowak.....21.235
3. Long.....17.407
4. Brennan.....17.407
5. Duke.....14.139
6. Goplen.....13.013
7. Skovron.....12.783
8. Suits.....10.76
9. McCourt....10.026
10. Loy.....9.873

# Bylaws

## From Page One

The number of Grand Prix events held during the year will be limited by the new bylaw, but there will not be fewer total events. All the tournaments we have grown to love will continue as before. The only difference being that some of those events which have been designated Grand Prix events will

not be Grand Prix events anymore.

This will affect only those players who compete for Grand Prix points - that simple. How it will affect them is thus: To dominate in the Grand Prix system, one must first of all be a strong enough player to earn points, and secondly, be willing to travel to other Grand Prix events in order to win even more points. Bylaw 20 will also prevent clubs from competing to see who can have the most Grand

Prix events, thereby removing any geographical advantage.

Bylaw 10. e) is effective 1/1/94. #20 becomes effective after the '94 MT State Open. This should give everyone time to digest the change and allow members to discuss any options before implementation.

Active MCA members can and should have their say on these and other business meeting matters in May. Be there and have your say, or forever hold your piece.



# CHESS

## THE INTERNATIONAL LANGUAGE

SUBMITTED BY THAD SUITS



A book has come into my hands which no traveling chess player should be without. It is a multilingual manual of conversation entitled Guide Polyglot, and it was published in France before the turn of the century. In it are sample conversations arranged in six columns - one for each language. The conversations cover a wide variety of subjects from taking a bath to hiring a stagecoach, but the one that first caught my attention deals with chess. Some extracts from it are presented below. Having studied the text and translations, I will feel much more at ease when traveling to foreign lands ( Like Missoula ) to play in tournaments. As you read it try to picture two of our own players - say Mayer and Motta - carrying on such a conversation.

**A.** Will you play a game of chess?  
( French: Voulez-vous faire une partie d'echecs? )

**B.** Willingly. But I warn you that you have to deal with an able adversary. I know my Philidor by heart.

**A.** And I, sir, am a frequenter of the Cafe' de la Regence.

**B.** ( Laughing ) This is rich indeed! We are like Homer's heroes, who mutually endeavoured to frighten each other before they began the conflict.

**A.** Will you take the white or the black?

**B.** It is all the same to me.  
( German: Es ist mir gleich. )

**A.** Then I will take the white, with your permission: That colour is of better omen.

**B.** That is a prejudice altogether unworthy of a frequenter of the

Cafe' de la Regence.

**A.** Pardon me sir; but you are placing your pieces wrong. The black queen is set on a black square: Servat regina colorem! That is a very strange mistake for a disciple of Philidor.

**B.** Mere absence of mind, sir. I beg you to consider it.

**A.** What, do you play the rook's pawn? That is a singular attack! I prefer a more regular proceeding and play the king's pawn two squares.

**B.** I shall have my pieces in play before you have yours.

**A.** And I shall be before you in taking a good position in the midst of the field of battle.

**B.** A piece touched must be played, sir; You cannot put the knight back in his old place.

**A.** Ah! You are so strict.

( Spanish: Es Vd. tan ri'gido. )  
Well then, check to your queen and castle.

**B.** You were not bound to tell me. I lose my castle.

**A.** Your game is sadly compromised. ( Portuguese: A Sua partida esta' muito comprometida. ) You will do well to call Philidor to your aid.

**B.** Check to the king! You cannot go on that square. You would be in check there from the black bishop.

**A.** I have another place and a good one.

**B.** Do you think so? Check to the king! Check, checkmate!

**A.** You are going to give me revenge. Now that I know your play, I can give you a rook or a knight.

**B.** Boaster! ( Italian: Smargiasso! )

The words may be different, but the sentiments have been the same the world over for hundreds of years.

# UPCOMING EVENTS

## FIVE-VALLEYS FREEZE-OUT JAN. 15, 16 1994

Rm. 362, Social Science Building, University of Montana, Missoula, MT 59801. 4 Round Swiss. EF: \$6.50 ( Juniors 1/2 price ) if rec. by 1/14, \$8 ( Juniors \$4 ) at site. Time control: 30/90, SD/30. \$\$ 25 b/20 ( 15, 10, medal to best < 1600. **NOTE: Entrance fee returned to all players barelegged above knees to top of socks throughout tourney.** Reg. 9:30-10:00am 1/15. Rounds: 11:00am, 4:00pm, 9:00am, 1:00pm.

NS, NC, W Advance registration or info:  
Dan McCourt, 608 West Central, Missoula, Mt 59801 (406) 721 - 2706

## MIDWINTER OPEN FEB. 5, 1994

Room 106 E, Student Union Building, Montana State University, Bozeman, MT. 4 Round Swiss. Time control: G/90. Rounds: 9:00am, 12:30pm, 3:45pm, 7:30pm. Reg: 8:15 - 8:45am Feb. 5. EF \$10. Prizes: \$ per entries. MCA membership required (\$6) - Other states OK. NS, NC, W. For advance registration / info: Steve Scarff 214 S. Church Ave. Bozeman, MT 59715 (406) 586-4479

## GROUNDHOG ACTION OPEN FEB. 6, 1994

Room 106 E, Student Union Building, Montana State University, Bozeman, MT. 5 Round Swiss. Time control: G/30 (Full K). Rounds: 9:00am, 10:15am, 11:30am, 1:15pm, 2:30pm. Reg: 8:15 - 8:45am Feb. 6. EF \$10. Prizes: \$ / entries. MCA membership required (\$6) - Other states OK. NS, NC, W. For advance registration / info: Steve Scarff 214 S. Church Ave. Bozeman, MT 59715 (406) 586-4479

## VALENTINE OPEN FEB. 12, 13 1994

Room 362, Social Science Building, University of Montana, Missoula, MT. 5 Round Swiss. Time control: rounds 1 & 2: G/2, rounds 3-5: 30/90, G/1. Rounds: 8:30am, 1:00pm, 6:00pm, 9:00am, 2:30pm. Registration : 7:30 - 8:00am Feb. 12. EF \$10 if by 2/10, \$20 at site. Juniors half price. No other discounts. Trophies for 1st, 2nd & 3rd places, Best < 1800, Best < 1600, Best < 1400 & Biggest Upset (Both players must have nonprovisional rtgs). MCA membership required (\$6), other states OK. No smoking, No computers, Wheelchair accessible. For advance registration or info: Romie G. Carpenter, 9305 Western Farms Rd. Missoula, MT 59802 (NO PHONE ENTRIES)



## 1ST ANNUAL THUNDER LIZARD GRAND PRIX MARCH 12, 13, 1994

30 grand prix points available 30  
\$2,000 PRIZE FUND GUARANTEED!

- AND -

## IGOR IVANOV SIMUL MARCH 11, 1994

Simul starts at 7:00pm, Friday at the West Bank Inn. Open to the first fifty ( 50 ) entries. EF \$10.

West Bank Inn, 475 River Parkway, Idaho Falls, ID 83401. 5 Round Swiss. Time control: G/2. Rounds: 9:00am, 2:00pm, 7:00pm, 9:00am, 2:00pm. Registration: 7:30 - 8:45am Saturday March 12th. Three sections: **OPEN SECTION** ( open to all who wish to enter ). EF \$30 if by 3/11, \$5 more at door. All players rated above 2400 entry paid by Thunder Lizard Chess Club. Open Section prizes: \$600 - 300 - 150 over all, Experts \$175 - 75, A's \$150 - 65. **RESERVE SECTION** ( open to all rated below 1800 ). EF \$30 if by 3/11, \$5 more at door. Reserve Section prizes: B's \$125 - 50, C's \$100 - 35. **UNDER 1400 SECTION** ( open to all rated below 1400 ). EF \$20 if by 3/11, \$5 more at door. Under 1400 Section prizes: D's \$75 - 25, E's \$50 - 20. 1/2 point byes available for any one round ( Requests for bye must be made prior to round one 1 ). Visa or Mastercard entries accepted by mail, at , or by phone - Call ( 208 ) 523 - 5117. NS, NC, W. For advance registration or info: Thunder Lizard Chess Club and Game Store, 575 1st St., Idaho Falls, ID 83401 - or call Jack Stanton at ( 208 ) 523 - 5117 during the day.



Anderson 1680  
( Black )  
Protic UNR  
( White )  
White's move



Rajala 1558  
( Black )  
Motta 2000  
( White )  
White's move



Anderson 1680  
( Black )  
Stacey 1834  
( White )  
White's move



## May Your Holidays Be Bright!



Duke 1635  
( Black )

Loy 1923  
( White )  
Black's move



Z. Mayer 2088  
( Black )

Brennan 1752  
( White )  
White's move



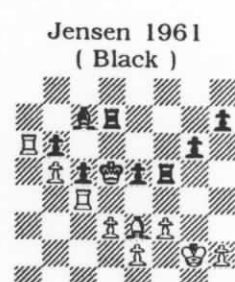
Loy 1923  
( Black )

Scarff 1735  
( White )  
White's move



D Shughart 1801  
( Black )

Protic UNR  
( White )  
White's move



Jensen 1961  
( Black )

Nowak 2222  
( White )  
White's move

12475278 1914 R 9411  
Thad Suits  
2125 1st Ave. N.  
Great Falls, MT 59401

