

# Montana Chess News



Volume 30: Issue 5 – NOVEMBER 2005

## INSIDE THIS ISSUE

---

**A new top dog  
has been  
crowned for  
2005!!**

---

*Congratulations to  
the 2005 Montana  
Closed winner  
J Michael Jensen*

---

**PROPOSED BYLAW CHANGES**  
**A NEW TOP DOG HAS BEEN CROWNED FOR 2005!!**  
Games from the 2005 Montana Closed  
Montana Closed, 2005 cross table  
**THE BARTO OPEN, 2005**  
2005 Barto Open G/45 cross table  
2005 Barto Open G/15 cross table  
**TOURNAMENT DIRECTOR'S QUICK REFERENCE**  
**THE 2005 MCA TRIPLE HEADER**  
Montana Quick Championship, 2005 cross table  
Montana Speed Championship, 2005 cross table  
Montana Action Championship, 2005 cross table  
**THE SATURDAY SPECIAL – BOZEMAN**  
**GREG NOWAK WINS 2005 EASTERN IDAHO CHESS**  
**TOURNAMENT!**  
**THE BEST AND WORST SCORE SHEET AWARD!!**  
**2005 TURKEY OPEN**  
2005 Turkey open cross table

**MONTANA CHESS ASSOCIATION  
MCA BOARD MEMBERS**

Nick Doulas – President (899-4664)  
523 27th St. S Great Falls, MT 59405  
[doulas41@bresnan.net](mailto:doulas41@bresnan.net)

Jim Skovron – Vice President (771-0630)  
1113 Carlos, Great Falls, MT 59404  
[skovron5@hotmail.com](mailto:skovron5@hotmail.com)

Haluk Beyenal – Eastern V.P (994-2269)  
29 Border Lane, Apt #2, Bozeman, MT  
59718

[Haluk\\_Beyenal@hotmail.com](mailto:Haluk_Beyenal@hotmail.com)

Romie Carpenter – Western V.P  
Bill McBroom - Secretary / Treasurer (728-  
4654)

2321 Raymond, Missoula, MT 59802

**EDITOR**

Haluk Beyenal

**Editorial Board**

Steve Scarff  
Dan McCourt  
Bill McBroom

Montana Chess News (MCN) is published by the Montana Chess Association, an affiliate of the U.S. Chess Federation (USCF).

Subscription and membership in the MCA is \$12/year regular, \$6/year junior (under 20), \$15 family. First time players who are also new to the USCF shall have their first year's membership fee waived.

Publishing schedule:

*Issue 1: January*

*Issue 2: April*

*Issue 3: June*

*Issue 4: September*

*Issue 5: November*

Deadline for submission is ten days before first day of the issue of the month.

**MCA Constitution: New**

During the 2005 MCA business meeting in Great Falls a number of revisions to the MCA Constitution were approved by the membership. The complete revised version is posted on the MCA web page ([www.Montanachess.org](http://www.Montanachess.org)). While members may suggest any items for consideration of the 2006 business meeting, this is the last specific call for still further changes to the Constitution.

President Doulas has asked Bill McBroom to continue as coordinator for proposals. Accordingly, members are invited to send any suggestions to the following address:

William H. McBroom  
2321 Raymond Avenue  
Missoula, MT 59802

In order that proposed changes may be readily understood by the membership, kindly provide the full text of the section for which a modification is being proposed, use strike out to show text to be removed, show proposed new language in bold, and provide a brief rationale for the desired new text. Proposals will be posted verbatim. In order to bring some closure to this process, only proposals received by December 15, 2005 will be on the agenda of the 2006 business meeting. Accordingly, if you have suggestions, please do not delay. During the next business meeting proposals will be entertained seriatim, each being considered a motion requiring a second.

**PROPOSED BYLAW CHANGES**

(for consideration during the 2006 Business Meeting)

B. The six players to compete in the State Closed shall be, in order of priority:

1. the previous year's State Champion.
2. the top two (2) finishers in the Grand Prix.
3. the top three (3) finishers with plus scores in the Montana State Open.
4. in the event of state co-champions, the championship will be a ten-person Swiss-format tournament with seeds going first to co-champions and then proportionately to those qualifying in 2 and 3 (above).

Rationale: an important part of determining the State Champion is to have the strongest players available compete for the title. While the experience of 2005 may well be atypical, dipping below those with plus scores from the Open precludes some strong players with grand prix points (and these are awarded only if a player has a plus score in a grand prix tournament). This is linked to E, below. Proposed by William H. McBroom

New bylaw V.D. (Renumbering, actually, re-lettering current D and beyond)

D. Site and date for the State Closed

When the Executive Board members arrange for the date and site for the State Open, they shall also arrange for a date and site for the State Closed. This information is to be published in the newsletter in advance of the Open in order that the membership and potential participants in the Closed (and satellite Barto Memorial) may plan accordingly. The Closed will be held sometime between June 1 and September 30. Because of their relative centrality, Bozeman, Butte, and Helena will be given first consideration for sites for the Closed. The President (or designee) who served during the preceding year shall be the tournament director of the Closed and Barto Memorial.

Rationale: This lets everyone plan ahead (rather than scramble to make last minute arrangements as has occurred in the past). Proposed by William H. McBroom

E. (re-lettered from D to E, if B, above, passes) Players for the Closed are seeded after the Montana Open. The procedure for seeding players into the Closed is as follows: seed each of the categories listed in V.B.3, above, in the order of priority in which they are listed, ~~a-d~~ 1-4. If any player who would be seeded from a lower category has already been seeded from a category above, then the next eligible player for the lower category is seeded instead. If seeds are needed after exhausting all alternates with plus scores from the State Open, the priority will revert to those with grand prix points. If all these alternates are also exhausted, the seeds will be awarded in order of finish among those with even scores or less from the State Open.

Rationale: this specifies the mechanism to achieve what is proposed in B, above (to which it is linked). [It also includes the editorial change from "a-d" to "1-4" -for which action is not required.] Proposed by William H. McBroom

- II. Membership  
D. Suspension of membership

Membership may be suspended by majority vote of the Executive Board (defined in Article III) for paying for MCA membership fees, an MCA-sponsored, or an MCA-sanctioned tournament (as defined in the bylaws) entry fee with a check returned for insufficient funds. The suspension is effective immediately and will continue ~~for some period after until~~ the check and any assigned surcharge is made good, ~~as determined by the board.~~ [Denial of benefits and services after payment has been made is fraud. It is blatantly obvious the text with strike through needs to be deleted.] **The Secretary/Treasurer is authorized to assess a surcharge to cover expenses incurred by a check returned for insufficient funds.** [This clause allows an equitable justification in addressing the issues which surround bounced checks. Surcharges are set in the "Dues" portion of the Bylaws.]

Proposed by Douglas Hansen

**E. Revocation of membership and expulsion**

~~Membership may be revoked and an individual expelled from the MCA by majority vote of the Executive Board for any one of the following reasons:~~

- ~~1. failure to observe any of the standards of conduct listed in the "Code of Ethics" section of the edition in force of the U.S. Chess Federation's Official Rules of Chess (Chapter 6, fifth edition);~~
- ~~2. refusal to comply with the rules of chess and tournament play~~
- ~~3. repeated and/or egregious violation of the standards of conduct of players and spectators in the U.S.C.F. Rules of Play section of the edition in force of the U.S. Chess Federation's Official Rules of Chess (Chapter 1, Section 20, fifth edition);~~
- ~~4. repeated payment of entry or MCA membership fees with checks returned for insufficient funds.~~

**The Executive Board may create complaints against any of its members, and deliver those complaints to the respective USCF officials. MCA members may create complaints against any MCA members, including the MCA Executive Board Members, and deliver those complaints to the respective USCF officials. Making a complaint to the USCF, against the MCA or any MCA members, shall not be a basis for suspension from the MCA.** [The USCF already has a system in place which handles complaints, and decides on penalties for violations. This system is available to all USCF members and all USCF Affiliates. Let us use them, people.]

Proposed by Douglas Hansen

**F. Notification of suspension or revocation/expelled membership**

~~Any individual who is suspended or expelled will be notified in writing by the Executive Board (defined in Article III) within ten (10) days of the decision. This notification will include the reason for the suspension or expulsion. Suspended or expelled members do not have the membership privileges listed above (Article II, Section D). [The USCF already has a system in place which handles complaints, and decides on penalties for violations. This system is available to all USCF members and all USCF Affiliates. Let us use them, people.]~~ Proposed by Douglas Hansen

**G. Appeal of suspension or revocation of membership**

Any individual who is suspended or expelled may appeal the decision. This is to be done in writing within thirty (30) days of receipt of notification of the action. In the appeal, the appellant is to nominate five (5) MCA members in good standing to the Executive Board (defined in Article III). The Executive Board will select at least one of these and appoint four (4) other members in good standing (not current members of the Executive Board) to serve as an appeals committee. The committee will render its decision based on the evidence contained in the written notification which levied the suspension or expulsion and on the individual's written appeal. By majority vote of the committee, the appeal will be either allowed or denied. The decision of the committee is final. If the appeal is allowed, full membership rights are restored. [The USCF already has a system in place which handles complaints, and decides on penalties for violations. This system is available to all USCF members and all USCF Affiliates. Let us use them, people.] Proposed by Douglas Hansen

**A NEW TOP DOG HAS BEEN CROWNED FOR 2005!!**

by Nick Doulas

The Montana State Closed was another excellent closed tournament. With Michael Jensen winning the tournament with a 4.5, Mike dominated the field, and had the championship wrapped up before the fifth round. This is Mike's third Closed title. He won his first in 1987 and his second in 1996. All the participants scored points in the tournament in deciding who the top dog was. Robert Martin and Haluk Beyenal both scored 2.5 points. Jens Lundell and Jim Skovron, both, scored 2.0 points. In fact, Jim was the only guy who tripped Mike up with a draw. Thus stopping Mike from scoring a perfect 5.0 in the Closed. This happened in the first round. Bob Phillips, last year's top dog, scored one-half points. All the competitors played at a high level creating a good and competitive chess tournament. I would like to thank all of you for participating and a huge congratulation to Mike Jensen for winning the 2005 Montana Closed Chess Championship; you are our new top dog!!!!

**Games from the 2005 Montana Closed****Mike Jensen - Bob Martin**

1.e4 e6 2.Nf3 d5 3.Nc3 Nf6 4.e5 Nfd7 5.d4 a6 6.Bf4  
c5 7.dxc5 Bxc5 8.Bd3 Nc6 9.0-0 f5 10.exf6 Nxf6  
11.Qe2 0-0 12.Bg3 Nb4 13.Rfe1 Nxd3 14.cxd3 h6  
15.d4 Bb4 16.a3 Bxc3 17.bxc3 Ne4 18.c4 Bd7  
19.Ne5 Rc8 20.c5 White is clearly better. The b7 and  
e6 pawns are weak and Black's bishop is bad. 20...Bb5  
21.Qg4 Qf6 22.f3 Nxc3 23.Qxg3 Kh7 24.a4 Be8  
25.Qg4 h5 26.Qg3 Qf4? With no queens on the board  
Black is left without any hope of counter play. 27.Qxf4  
Rxf4 28.Red1 Rc7 29.g3 Rf6 30.Rdb1 g5 31.Rb6  
Attacking both of Black's weaknesses. 31...Bd7 32.Rd6  
Bc8 33.Kf2 Kg7 34.Rb1 Rf8 35.Ke3 Kf6 36.Rf1 Kg7  
37.f4 Rf5 38.Rf2 Kf6 39.Rd8 Black is now totally tied  
up. 39...gxf4+ 40.Rxf4 Rxf4 41.Kxf4 Ke7 42.Rh8 Kf6  
43.Rxh5 Rg7 44.Rh6+ Ke7 45.g4 Bd7 46.g5 Bxa4  
47.h4 Bc2 48.Rh8 Rh7 49.Rxh7+ Bxh7 50.Kg4 1-0

**Jens Lundell - Jim Skovron**

1.d4 e6 2.c4 f5 3.g3 Nf6 4.Bg2 d5 5.Nc3 c6 6.b3 Bd6  
7.Nf3 Nbd7 8.Qc2 0-0 9.0-0 Ne4 10.Nd2 Qe8  
11.Ndxe4 fxe4 12.f3 exf3 13.exf3 Nf6 14.f4 Qh5  
15.Bf3 Qf7 16.c5 Bc7 17.Bd2 Bd7 18.Rae1 Rae8  
19.b4 Nh5 20.Nd1 Kh8 21.Bg2 Qf5 22.Ne3 Qf6  
23.Bf3 Nxf4 24.gxf4 Qxf4 25.Ng4 Qxd4+ 26.Kh1 Rxf3  
27.Rxf3 Qxg4 28.Ref1 Kg8 29.Bf4 e5 30.Rg3 Qxf4  
31.Rxf4 exf4 32.Rg5 f3 33.Rh5 Ref# 0-1

**Bob Phillips - Jim Skovron**

1.e4 d6 2.d4 Nd7 3.Nc3 e5 4.f4 Ngf6 5.Nf3 Be7 6.Bc4  
0-0 7.0-0 Nb6 8.Bb3 exd4 9.Nxd4 c5 10.Nf3 c4  
11.Ba4 Nxa4 12.Nxa4 Nxe4 13.Qd5 Nc5 14.Nxc5  
dxc5 15.Qxc4 Be6 16.Qe2 Bg4 17.Be3 Qc7 18.h3  
Bxf3 19.Qxf3 Bf6 20.c3 Rfe8 21.g4 b6 22.g5 Be7  
23.f5 f6 24.g6 Qe5 25.Rae1 Bd6 26.Bf4 Qxf4 27.Qd5+  
Kh8 28.Rxe8+ Rxe8 29.Rxf4 Bxf4 30.Qf7 Rd8  
31.Qxa7 Rb8 32.Kf2 h6 33.Kf3 Be5 34.b4 cxb4  
35.cxb4 b5 36.a4 bxa4 37.Qxa4 Bd4 38.Qd7 Bg1  
39.b5 Kg8 40.Qe6+ Kh8 41.Qd6 Re8 42.b6 Rg8  
43.Ke4 Re8+ 44.Kd5 Bf2 45.b7 Ba7 46.Qd7 Rg8  
47.Qc8 Bb8 48.Ke6 1-0

**Bob Phillips - Jens Lundell**

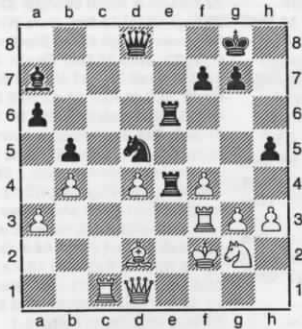
First round game. The former state champion  
against a newcomer. 1.e4 d6 2.d4 Nf6 3.Nc3 g6  
4.Be3 White plans to attack by Qd2, 0-0-0, h4, h5  
etc. It is best for Black to delay castling. 4...c6 5.f3  
Nbd7 b5 is the book move 6.Qd2 e5 7.Nge2 Nb6  
8.Ng3 Be6 9.Rd1 Bc4 10.b3 Bxf1 11.Kxf1 Qc7  
12.Kf2 Be7 13.h4 0-0-0 14.a4 d5 15.a5 Nbd7  
16.exd5 Nxd5 17.Nxd5 cxd5 18.dxe5 Nxe5  
19.Bxa7 Bc5+ 20.Bxc5 Qxc5+ 21.Qd4 Qd6  
22.Ne4 c4 is much stronger 22...Qe7 [22...Ng4+  
23.fxg4 Qf4+] 23.Nc5 Here White started to play  
fast even though it was Black who was low on  
time! 23...Nc6 24.Qe3 Qxe3+ 25.Kxe3 Rhe8+  
26.Kf2 Nxa5 27.Ra1 Nc6 28.Ra8+ Kc7 29.Rxd8  
Rxd8 30.Rd1 Nb4 31.c3 Na2 32.Rd3 b6 33.Na4  
Nc1 34.Rd1 Nxb3 35.Rb1 b5 36.Rxb3 bxa4  
37.Ra3 Ra8 Black is up a pawn but it is hard to  
know if he is winning. White is still playing too fast  
and makes more mistakes... 38.Ke3 Kc6 39.Kd4  
Kd6 40.g4 f5 41.gxf5 gxf5 42.f4?? This loses at  
least another pawn and allows Black to put the  
rook on the 4th rank where it will be more active.  
42...Re8 43.Ra1 Re4+ 44.Kd3 Rxf4 45.h5 Kc5  
46.h6 Rh4 47.Ra3 Kb5 48.Ra1 Rxh6 49.Kd4 Rc6  
50.Rb1+ Ka5 51.Rf1 f4 52.Kxd5 Rxc3 53.Rxf4  
a3 54.Rf7 Ka4 55.Rxh7 Kb3 56.Rb7+ Kc2  
57.Kd4 Rb3 58.Ra7 Kb2 0-1

**Jim Skovron - Mike Jensen**

1.f4 Nf6 2.e3 g6 3.d4 Bg7 4.Bd3 d6 5.Nf3 Nbd7  
6.0-0 0-0 7.e4 e5 8.fxe5 dxe5 9.d5 c6 10.dxc6  
Qb6+ 11.Kh1 bxc6 12.Na3 Ba6 13.Qe2 Bxd3  
14.cxd3 Ne8 15.Nc4 Qc7 16.Bd2 Nd6 17.Ne3  
Nb5 18.Rac1 Qb7 19.Ng4 f6 20.Bh6 c5 21.Qe3  
Nd4 22.Bxg7 Kxg7 23.Qh6+ Kg8 24.Nh4 Rf7  
25.Nxg6 hxg6 26.Qxg6+ Rg7 27.Nxf6+ Nxf6  
28.Qxf6 Qxb2 29.g3 Ne2 30.Qe6+ Kh8 31.Qh6+  
Kg8 32.Qe6+ Kh8 ½-½

**Bob Martin – Haluk Beyenal**

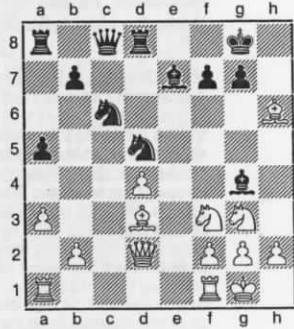
1.Nf3 Nf6 2.c4 e6 3.g3 c6 4.Bg2 d5 5.cxd5 6.0-0 Bd6 7.d4 0-0 8.Nc3 Nc6 9.Bd2 Bd7 10.a3 Rc8 11.e3 a6 12.b4 b5 13.Ne1 e5 opening up the center then controlling it 14.dxe5 Bxe5 15.f4 this weakens e3. White will have problems with e3 an open e file. 15...Bb8 Ba7 is the goal – pressuring e3 16.Nc2 Bg4 17.Bf3 Bh3 18.Rf2 Ba7 19.Ne2 Bg4 20.Ned4 Bxf3 21.Rxf3 Re8 [21...Nxd4 22.Nxd4 Ne4 23.Rc1 Qf6 24.Rxc8 Rxc8 25.Bc1 Bxd4 26.exd4 Qc6 27.Rf1 Qc3 Fritz sees winning d4 pawn, Re8 which I played is more positional and clearly increases pressure on the e file and eventually will crush White's defense] 22.Rc1 Re4 [22...Ne4 23.Nxc6 Rxc6 24.Nd4 Rc4 25.Rxc4 dxc4 26.Bc1 Nc3 27.Qc2 Bxd4 28.exd4 Ne2+ 29.Kf2 Nxd4 Black clearly better] 23.Nxc6 Rxc6 24.Ne1 Rce6 Black follows the original plan... pressure on the e file and eventually e3 will fall 25.Ng2 h5 [25...d4 26.exd4 Rxd4] 26.h3 [26.Bc3 Ng4 27.Bd4 Nxe3 28.Bxe3 Rxe3 29.Nxe3 Bxe3+ 30.Rxe3 Rxe3 31.Qxh5 that's the reason h5 looks weak but the d pawn is unstoppable 31...d4 32.Qf5 Rc3 33.Rd1 d3 34.Qe4] 26...d4 Black is done... Mission accomplished... e3 falls... open e file 27.Kf2 Nd5 28.exd4 Diagram



28...Bxd4+?? here everything is ok except this move..... White gets the tempo needed to move his king.... [28...Rxd4 game is over is it? 29.Kf1 forced 29...Nf6 pressures to d2 30.Rfc3 or Rc2 (does not help. The game is over here 30...Rxd2 31.Qf3 Qd4 32.Ne3 Rd3] 29.Kf1 Qe8 [29...Qe7 30.Rd3 g6 31.Rc8+ Kh7 32.f5] 30.Rd3 g6 [30...Rc6 31.Rxc6 Qxc6 32.Bc1 Qc4] 31.Be1 Rxe1+ 32.Qxe1 Rxe1+ draw agreed. After missing Rxd4 at move 28 I did not want to play. 33.Rxe1 Qd7 34.Red1 [34.Rxd4 Ne3+ 35.Rxe3 Qxd4] 34...Qxh3 Black is definitely better. 35.Rxd4 Ne3+ 36.Kf2 Nxd1 etc but offers a draw to White 1/4-1/2

**Jens Lundell – Michael Jensen**

Both players won their first game, especially Jens won against a former state champion and willing to win this game too. 1.d4 d5 2.c4 e6 3.Nc3 c5 4.cxd5 cxd4 5.Qxd4 Nc6 6.Qd1 exd5 Qd5 is theory 7.Nf3 an early d4 for White gives too much trouble to White 7...Nf6 8.e3 Bc5 9.Be2 0-0 10.0-0 d4 11.Na4 Be7 12.exd4 Nd5 13.Nc3 Be6 14.Be3 Bf6 15.Ne4 Be7 16.a3 a5 17.Qd2 Qc8 18.Neg5 Bf5 19.Bd3 h6 20.Ne4 Rd8 21.Ng3 Bg4 22.Bxh6? Diagram



White wants to attack 22...Bxf3 23.Bxg7!? Qg4 24.gxf3 Qxg7 Diagram



Whites attack ended down a piece and now the pawn structure is bad, but can he attack more? 25.Kh1 Nxd4 26.Nh5 Bg5 27.f4 Qh6 28.fxg5 Qxh6 29.Bh7+ Kxh7 30.Qxd4 Qf3+ 31.Kg1 Nf4 0-1

**Mike Jensen - Haluk Beyenal**

Round 4, Mike has 3 points and Haluk has 2 points. Both players are playing to win the tournament and this is the key game. Comments by Haluk Beyenal  
**1.c4 Nf6 2.g3 e6 3.Bg2 d5 4.Nf3 c6 5.0-0 Nbd7 6.d4 Bd6 7.cxd5 cxd5 8.Nc3 0-0 9.Nb5 Bb8 10.Nc3 Bd6 11.Nb5 Bb8 12.Nc3** Diagram



Jensen plays for a draw, he is very close to the title. If I repeat my move it is a draw. I had to make my decision. Play to win! Jensen played very solid games so far and looked like the most ready player. I take the challenge and change the repetition. So no draw...**12...a6 13.a3 b5 14.Qd3 Bb7 15.b3 Bd6 16.Bb2 Rc8 17.Rfc1 Qe7 18.b4 Rc7 19.Nd2 Rfc8 20.e4 dxe4 21.Ncxe4**

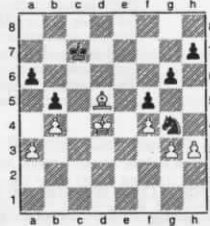


Black has more control on the board. Open c file controlled with double rooks. Two bishops facing the White king. What else could Black want? **21...Rxc1+ [21...Nxe4 22.Nxe4 Bd5 23.Rxc7 Bxc7 24.Rc1 Nb6 25.Nc5 Bxg2 26.Kxg2 Rd8 27.Nxa6 Nc4 28.Rc2 Bb6 29.Nc5 Qf6 30.Ba1 Ra8 31.Rc3 h6 32.d5] 22.Rxc1 Rxc1+ 23.Bxc1 Nxe4 [23...Bb8 24.Qc2 Ba7 25.Qc7 Bxe4 26.Nxe4 Nxe4 27.Bxe4 Bxd4] 24.Nxe4 Bxe4**

Last 4 moves, by exchanging pieces Black gave a good position. I had to change the pieces here. My son started to call me very often and I was afraid of blundering a piece. I should have played more aggressively and kept the pieces on the board. Losing with a blunder is more honorable than losing like playing a fool **25.Qxe4 f5**



signs of a bad chess player. I started to play very badly. [25...Nb8 26.Qa8 Qc7 27.Be3; 25...Qd8 26.Qb7 Nb8 27.Be3 h5 28.d5 e5] **26.Qc6 Nb8 27.Qc8+ Kf7 28.d5 Qd7 29.Qxd7+ Nxd7 30.dxe6+ Kxe6 31.Bb7 Nb8 32.f4 Be7 33.Bb2 g6 34.Kf2 Kd7 35.Ke3 Kc7 36.Bd5 Nd7 37.Bg8 Bf6 38.Bd4 Bxd4+ 39.Kxd4 Nf6 40.Bd5 Ng4 41.h3** Diagram



In this position I had to make a decision. Nf6 was drawish so I did not want to play it. I gambled and played very risky move which I did not even analyze in the game. **41...Nf2 [41...Nf6 42.Ke5 Nxd5 43.Kxd5 Kd7 44.g4 [44.Kc5 Kc7 45.g4 fxg4 46.hxg4 h6 47.f5 gxf5 48.gxf5 Kd7 49.Kd5] 44...fxg4 45.hxg4 h6 46.Ke5 Ke7 47.f5 h5 still draw] 42.Bg2 Kb6 43.Bd5 Nxb3 [43...Kc7 44.Ke3 Nd1+ 45.Kd2 Nb2 46.Bg8 h6 47.Kc2 Na4 48.Bh7 g5 49.Bxf5 gxf4 50.gxf4] 44.Bg8 h6 45.Bh7 g5 [45...Nf2 46.Bxg6 Nh1 47.Bxf5 Nxb3 48.Bc8 a5 49.f5 axb4 50.axb4 Kc7 51.f6 Kd6 52.Bg4 [52.Ba6] 52...h5 53.Bh3 h4] 46.Bxf5 Ng1 47.Bg4 gxf4 48.gxf4 h5 49.Bxh5 Nh3 50.Ke5 Nxf4 51.Kxf4 1-0**

Thanks to Jens Lundell for help in analyzing games.

**Jim Skovron - Bob Martin**

1.f4 e6 2.d4 Nf6 [2...d5] 3.e3 d5 4.Bd3 c5 5.c3 Nc6 6.Nf3 cxd4 7.exd4 Bd6 8.0-0 0-0 9.Ne5 Ne4 10.Qh5 f6 11.Nd2 fxe5 12.Nxe4 g6 The best and the only defensive move for Black, and Bob plays it! 13.Qg4 dxe4 14.Bxe4 Rf7 [14...exf4 many other moves here are better for Black than Rf7. Bob is giving Jim a chance to survive.] 15.Bxc6 bxc6 16.fxe5 Rxf1+ 17.Kxf1 Qf8+ 18.Kg1 Be7 19.Be3 Qf5 20.Qe2 White has to avoid exchanging pieces. The fewer pieces on the board the better for Black since he has one extra piece for two pawns 20...Bd7 21.Rf1 Qh5 22.g4 Qh3 23.Rf2 Rf8 24.Rxf8+ Bxf8 25.Bg5 Bh6 [25...c5 with the idea of Bc6] 26.Bxh6 Qxh6 27.Qf2 Qg5 28.h3 h5 29.Qg2 hxg4 30.hxg4 Qe3+ 31.Kh2 g5 32.Qc2 Qf4+ 33.Kh3 Kg7 34.Qb3 Qf3+ 35.Kh2 c5 This time Bob plays a killer move! 36.Qb8 Bc6 0-1

**Bob Phillips - Mike Jensen**

A former State champion against the new champion. Jensen is guaranteed to win the title, Phillips tries to get a win against the champion. 1.e4 c5 2.Nf3 Nc6 3.d4 cxd4 4.Nxd4 g6 5.Be3 Nf6 6.Nc3 Bg7 7.Bc4 White tries to play the Yugoslav attack against an Accelerated\_Dragon. It doesn't work... 7...0-0 8.f3 Qb6 9.Bb3 Nxe4! 10.Nf5 Nxc3 11.Bxb6?? This loses a piece, Qd2 is forced. 11...Nxd1 12.Nxg7 axb6 13.Nh5 gxh5 14.Rxd1 The game is over... 14...Na5 15.Bd5 e6 16.Be4 d5 17.Bd3 Nc6 18.a3 e5 19.0-0 Be6 20.c3 Rad8 21.Rfe1 Rfe8 22.Bb5 f6 23.Re2 Bf5 24.Rdd2 Be6 25.Kf2 Re7 26.c4 Red7 27.cxd5 Rxd5 28.Rxd5 Rxd5 0-1

**Montana Closed, 2005 cross table**

#	Name	ID	Rtng	Rd 1	Rd 2	Rd 3	Rd 4	Rd 5	Tot
1	J Michael Jensen	12024550	unr.	D5	W4	W3	W2	W6	4.5
2	Haluk Beyenal	12694020	1802	D3	W6	D4	L1	D5	2.5
3	Robert A Martin	12497030	1772	D2	W5	L1	D6	D4	2.5
4	Jens O Lundell	12746865	1837	W6	L1	D2	L5	D3	2.0
5	James J Skovron	12347620	1816	D1	L3	L6	W4	D2	2.0
6	Phillips L Robert		1869	L4	L2	W5	D3	L1	1.5

**THE BARTO OPEN, 2005**

by Nick Doulas

The Barto Open was also a highly successful tournament considering gas prices and the fact that it coincided with the Chinook Open. This year we had eight participants for both tournaments which was great! All the participants played well. In addition, we gained two new members: Justin Howells and Robert T Jertberg. The Barto was their first USCF rated tournament. Both are officers in the United States Air Force—great to have you guys playing. There were two different tournaments at the Barto: game in 45 on Saturday and game in 15 on Sunday. The game forty-five tournament was won by Ron Erickson, who is from Missoula, and Nick Doulas with 4.5 points each. The game in 15 was won by Thad Suits. Thad has been away from tournament chess for nearly five years. It is great to see the 'suitsinator' back in action. He won the game in 15 tournament with 4.5 points. This was not a money tournament, but rather a trophy tournament. What happened was this: to win a trophy the scores from both tournaments were combined for a result. Both Ron and Nick scored two-half points in the game in 15 tournament plus there 4.5 points scores which they earned on Saturday, thus creating an overall tie Ron won on tie breaks and took home the first place trophy. Congratulations Ron! Nick took home the second place trophy. There were two other section trophies, best under 1800 which was won by Dustin Thompson; great job Dustin. The second section trophy was best under 1500 which was won Kirk Lundby. Great Job Kirk! The biggest upset prize was won by Mel Drake of Helena. Mel knocked off Bill Furdell



for a 350 point upset in the game 45 tournament. The Barto drew a great group from all over the state. I would like to thank all of you who participated. This tournament was awesome, and it would not have happened if you folks had not been there. Thank You!!

**B, Mitchell (1470) - Thad Suits (1929) [B13]**  
 Barto Memorial 2005, 09.10.2005, [Caro-Kann - Exchange 1.e4 c6 2.d4 d5 3.exd5 cxd5 4.Bd3 Nc6 5.c3 g6 6.Bf4 Bg7 7.Nd2 Nh6 8.Ngf3 0-0 9.0-0 Kh8 10.h3 Re8 11.Ne5 f6? [11...Nxe5 12.Bxe5 f6] 12.Bxh6 fxe5 13.Bxg7+ Kxg7 14.dxe5 Nxe5 15.Bb5 Nc6 16.Nf3 e5 17.g4?! [17.Re1] 17...a6 18.Bxc6 bxc6 19.Nxe5? Rxe5 20.Qd4 Qf6 21.Rae1 Rxe1 22.Qxf6+ Kxf6 23.Rxe1 Bd7 24.Kg2 Re8 25.Rxe8 Bxe8 26.f4 h5 27.Kf3 White resigned about 10 moves later. 0-1

**Thad Suits (1929) - D, Thompson (1505) [B20]**  
 Barto Memorial 2005, 09.10.2005 1.e4 c5 2.d3 Nc6 3.Nd2 Nf6 4.Ngf3 g6 5.g3 Bg7 6.Bg2 0-0 7.0-0 e6 8.a4 [Alternatives were 8.Nb3, preparing a d4 push, or 8.Re1.] 8...d6 9.Nc4 b6 10.Nh4 Bb7 [10...d5] 11.Bg5 Qc7 12.Bf4 e5 13.Bd2 a6 14.f4 Rfe8 15.f5 Ne7 16.g4 d5 17.g5! dxc4 18.gxf6 Bxf6 19.fxg6 Bxh4 20.gxf7+ Kf8? 21.Bh6# 1-0

**Kirk Lundby - Nick Doulas [C21]**  
 Borto Memorial, 2005 1.e4 e5 2.d4 d6 3.dxe5 dxe5 4.Qxd8+ Kxd8 5.Nf3 Nc6 6.c3 Nf6 7.Bg5 Be7 8.Bb5 Nxe4 9.Bxe7+ Kxe7 10.0-0 f6 11.Re1 Bf5 12.Nh4 g6 13.Nxf5+ gxf5 14.Bxc6 bxc6 15.Na3 Rab8 16.f3 Nd2 17.Rad1 Rxb2 18.Re2 Nxf3+ 19.Kf1 Nxe2+ 20.Ke1 Rxe2+ 21.Kxe2 Rg8 22.Rg1 e4 23.Kf2 f4 24.Re1 e3+ 25.Kg1 Nf3+ 0-1

Thanks to Thad Suits for sending his games.

**2005 Barto Open G/45 cross table**

#	Name	ID	Rtng	Rd 1	Rd 2	Rd 3	Rd 4	Rd 5	Tot
1	Ron Erickson	12294030	1677	D2	W5	W4	W3	W6	4.5
2	Nick J Doulas		1309	D1	W3	W7	W4	W8	4.5
3	Kirk O Lundby	12799276	1411	D5	L2	W6	L1	W7	2.5
4	Dustin Thompson	13066244	1505	W8	W7	L1	L2	D5	2.5
5	Justin Howells		unr.	D3	L1	W8	L6	D4	2.0
6	Robert T Jertberg	13240602	unr.	L7	W8	L3	W5	L1	2.0
7	William J Furdell	12616131	1493	W6	L4	L2	L8	L3	1.0
8	Melvin P Drake	12653312	1173	L4	L6	L5	W7	L2	1.0

**2005 Barto Open G/15 cross table**

#	Name	ID	Rtng	Rd 1	Rd 2	Rd 3	Rd 4	Rd 5	Tot
1	Thad Suits	12475278	1926	W7	W3	W2	W8	D4	4.5
2	Kirk O Lundby	12799276	1411	W4	D5	L1	W6	D8	3.0
3	Dustin Thompson	13066244	1505	W8	L1	W5	W7	L6	3.0
4	Ron Erickson	12294030	1677	L2	L6	W8	W5	D1	2.5
5	Stephen Tamang	12876492	1607	W6	D2	L3	L4	W7	2.5
6	Nick Doulas	12604788	1349	L5	W4	D7	L2	W3	2.5
7	Robert L Mitchell	12512133	1470	L1	W8	D6	L3	L5	1.5
8	Melvin P Drake	12653312	1173	L3	L7	L4	L1	D2	0.5

## TOURNAMENT DIRECTOR'S QUICK REFERENCE

(U.S. Chess Federation, *Official Rules of Chess*, 5<sup>th</sup> edition, 2003)  
By William H. McBroom October 2000 (revised March 2004)  
**ALL CHESS PLAYERS MUST KNOW!**

Arranged below, in the order most likely encountered over the course of an event, are the major aspects of tournament play. Despite a T.D.'s reasonably thorough knowledge of the rules, it is not always possible to find the written version on short notice. Here, a synopsis of the relevant principle is offered and a reference to the specific rule is provided for issues likely to be encountered in practical tournament play. Revisions between editions are posted on the U.S.C.F. web site: [www.uschess.org.tds/ruleschng.html](http://www.uschess.org.tds/ruleschng.html)).

### Advertised Terms of Play

- Prizes as advertised, round start times, results posted, *etc.* are under "players' rights" (Ch. 5, pp. 230-231). Variations in rules should be posted. **1B.1**

### Role and Power of the Tournament Director

- The chief T.D. is responsible for all play and to see that rules are observed. **21A**
- Duties and powers are defined. **21B**
- The T.D. may assess penalties for infractions of the rules (some specified in certain sections) including time penalties, loss of game, and expulsion from the tournament. **20K** This includes discretion in assessing penalties. **1C.2**
- The T.D. may intervene in games to: answer questions, correct illegal moves under certain conditions, issue warnings or penalties, settle disputes, inform players of opponents' late arrival or extended absences from the game. **21D**

### Conduct of Players

- A player who refuses to comply with the rules may be penalized by a warning from the T.D., time added to the opponent's clock, or loss of the game. **13I**
- Players must observe the U.S.C.F. code of ethics. **20A** and **Ch. 6, pp. 232-235**
- Notes (exclusive of a complete score sheet, record of times, draw offers, *etc.*), devices, and advice are illegal. **20B to 20E**
- Annoying behavior is prohibited. **20G**
- Analysis in the playing room is prohibited. **20F**
- Players must refrain from audible talking in the tournament room while others are playing (4<sup>th</sup> point of "responsibilities," Ch. 5, p. 231).
- Players are forbidden to pick up a clock while a game is in progress (although either player may stop both clocks--on their own time (TD Tip, p. 12)--to summon the T.D.). **16C.2**

### Behavior of Spectators

- Spectators have no special privileges. **20M.1**

### Swiss Pairings

- The basic rules of the Swiss system in priority order:
  - avoid (save for rare exceptions) players meeting twice. **27A.1**
  - pair those with equal scores whenever possible. **27A.2**
  - within score groups, pair top half with bottom half. **27A.3**
  - equalize colors (try to avoid same more than twice in row). **27A.4**
  - alternate colors whenever practical. **27A.5**

(NOTE: Section 29 gives a number examples of pairings, transpositions, *etc.*)

- Ratings: use most recent published rating. 28C The matter of foreign or FIDE ratings is covered in 28C.2 and T.Ds. may assign ratings for unrated players. 28E
- Odd players (including multiple players who cannot be paired) in a score group are dropped down from bottom of the higher to the top of lower score group. 29D.1,.2
- Due colors should be given to as many as possible in succeeding rounds: equalization takes precedence over alternation (the higher ranked player getting preference). 29E.3
- Transpositions (changing the order within the top or bottom half) and interchanges (switching between top and bottom half) are allowed to improve due colors. The limit is 80 points to maximize the number receiving due colors and 200 points to minimize the number who receive the same color more than two times in a row. 29E.5a, .5b
- No player shall be assigned the same color three times in a row unless there is no other way to make pairings or to equalize colors. 29E.5.f

#### Byes

- The T.D. may allow half-point byes for convenience of players. 22.C
- A full-point bye is given to the lowest rated (but not unrated) player when there is an uneven number of players. 22B and 28L.2 (Also see new players in 4-round events, 28L.5.)
- No player will be given more than one full-point bye and none shall be given to a player who has won an unplayed game. 28L.3

#### Equipment Standards

- Staunton design is standard for pieces (40C) and the height range is between 3 3/8" and 4 1/2" for the King, the other pieces being in proportion. 40B
- Chess boards must be opaque and made of a smooth material (41A) offering high contrast between colors of squares (41B), and have squares approximately 2-2/12 inches. 41C
- At his election, Black's equipment is to be used (if tournament standard). Black also has choice of the side of the table. If the T.D. has not indicated that clocks should face in a specific direction (16L), Black also has a choice of the side of the board for the clock. 39A
- If Black is late, White may use his equipment (if tournament standard). 39A.1

#### Clocks

- Players, not the T.D., are responsible for knowing how to set delay clocks. 5F
- Clocks are to be equipped with a "flag" or other means of indicating the expiration of time in a time control. 5G, 42A
- Clocks with signaling devices that call attention to the fall of a flag are forbidden. 42B.1
- Conventional analog clocks and digital clocks with time delay capacity are equally standard and both are more standard than digital clocks without a delay feature. 42C Digital clocks with the time delay enabled is preferred to any other clock in any game with a sudden death time control. 42D
- With more than one time control in sudden-death games, clocks with a delay feature should be set for a five-second delay from the start of the game—three (3) seconds for quick-rated (G=10 to G=29, where score keeping is not required, 5C) tournaments. 5F
- Clocks should be set to register 6:00 at the end of the first time control. 16B.a
- A player wishing to summon the T.D. to make a claim or for any valid reason (including requests for rulings, 5I) may stop both clocks. 21F
- Players must remove their hands from the clock after pressing it. 16C

#### Start Times

- All clocks should start promptly at the specified time for a round (16N), but not until equipment is set up. 13D.1

- At the start of a round, the player of the Black pieces starts White's clock and each player, having moved, stops his clock and starts that of the opponent. **16I**
- If one player is late, White's clock is started at the start time. **16J**
- If both players are late, the first to arrive must split the elapsed time between the two players before starting White's clock. **16K**
- A clock may not be started until a board and pieces are in place. **16M**

#### Recording Games/Keeping Score

- Players are required to record the game (both players' moves) on a prescribed score sheet. **15A** Score sheets belong to organizers and failure to hand in requested copy can result in penalty. **15G**
- During time pressure (less than five minutes):
  - non-sudden-death: the player with less than five minutes may stop keeping score (but this makes it impossible to claim a win on time, a draw by repetition, or a draw with the 50-move rule, unless observed by the T.D. or some disinterested witness. **15B** After the time control, missing moves must be filled in. **15F**
  - sudden-death: if either has less than five minutes, both are excused from keeping score. **15C**
  - borrowing score sheets is possible if both have more than five minutes (**15D.1**), the request and use are both on requester's time (**15D.2**), and compliance is not mandatory, unless so directed by the T.D. (**15D.3**)

#### Time Pressure/Trouble

- Time pressure is defined as having less than five minutes and this affects score-keeping in both non-sudden-death (**15B**) and sudden-death situations (**15C**)

#### Illegal Moves/Positions

- The "determination" and "completion" of moves are defined. **9**
- The "touched piece" is defined. **10**
- Illegal moves within the last ten (but not prior, when they stand **11B**) moves cause the game to be reinstated to the position before the illegal move was made. **11A** If there was an initial incorrect position or if the game began with colors reversed, and this is noticed before Black completes his 10<sup>th</sup> move, the game is annulled and a new one begun. **11F** If a game is played with the board incorrectly positioned (White square not at lower right), the game is transferred to a new board, correctly positioned and resumed. **11G**
- In "sudden-death" time pressure (either player having less than 5 minutes), if an illegal move is not corrected before the opponent completes two more moves, the move stands. **16D.1**
- If the T.D. witnesses an illegal move (except in sudden-death time pressure, **11D**), he shall require the player to replace it with a legal one. **11H**
- Illegal moves in a sudden-death time control result in two minutes added to the opponent's clock. (**11D**)
- Calling "check" is not mandatory and is rare in high-level tournaments. **12F**

#### Insufficient Losing Chances

- Insufficient losing chances in sudden-death, including alternatives, improper claims, and penalties are discussed in **14H**.
- The claim is an offer for a draw. If accepted the game is drawn.

- If rejected, a clock with a five-second (three-second in quick-rated play) delay should be inserted in the game. The claimant has one minute or half his remaining time—whichever is less. If the game was played from the start with a delay feature activated, the insufficient losing chances rule is not in force. The game is played to the end and either side may lose on time.

#### Unsolicited Advice

- While soliciting advice may be penalized with a forfeit loss (20E.1), situations with unsolicited advice are more complicated and the T.D. has a range of possible rulings, such as prohibiting the making of the suggested move and declaring the game a draw.

#### Offering a Draw

- Proposing a draw should be made only after determining a move and before pressing the clock. The opponent may accept it or reject it orally (or by deliberately touching a piece). In the interim, the offer can not be withdrawn (nor may improperly offered draws). 14B.1, 3

#### The Drawn Game

- The game is drawn:
  - by agreement (all draw claims are also draw offers). 14B
  - triple occurrence of position (not move) 14C (Making the claim depends in part on who is on the move, and invalid claims warrant two minutes added to the opponent's clock 14C.2).
  - insufficient material to continue. 14D
  - the "50-move" rule. 14F
  - if both flags are down in sudden-death. 14G
- The completed move delivering stalemate immediately ends the game and stalemate has priority over lack of certainty about the fall of a flag. 14A, 20E.2

#### The Decisive Game

- The game is won if one checkmates one's opponent (13A, and one is not obliged to press the clock if checkmate is delivered, 13A.1--checkmate takes priority in the case of disputes, 13A.3), one's opponent resigns (13B), or time forfeit (the opponent has not completed the prescribed number of moves in the allotted time (one is said to have made a time control only if there is unexpired time after making the move that completes the time control --and pressing the clock--9F) 13C
- The flag is considered "down" when either player points that out. 16E This includes the case of a draw offer being made, but the flag falls before one's opponent responds. 14B.4
- The director may use the score sheet of the claimant's opponent to determine that the correct number of moves have been made in case of time forfeit. 13C.8
- The game is lost by the player who fails to arrive within an hour of the scheduled start of a round (13D) and should both players be late, the T.D. may declare a game lost by both players. 13F

#### Requests for Rulings/Appeals of Rulings

- A player with a valid complaint or claim should stop both clocks and see the director. 21F.1
- The facts may be agreed upon (21F.2) or not (21F.3) and unbiased evidence is to be used. 21G
- Time limits and procedures for appeals, including the establishment of an appeals committee, and appeals to U.S.C.F. are addressed 21H, 21I and 21K

#### Prizes

- No player may receive more than one cash prize (upset, best game, etc. being exceptions). 32B.1

- Tied winners or place winners of the same class shall receive  $1/n$ th of the applicable prize fund (where  $n$  is the number tied). **32B.2**
- If the winners of class prizes tie with place winners, all in the tie (and all cash prizes involved) are divided equally (unless the class winners would receive more money by taking the class prizes). **32B.3**
- Breaking ties (other than cash) in Swiss-format tournaments is done using (in this order) modified median, Solkoff, cumulative, and cumulative of opposition—unless a different method has been announced in advance. **34E** The Sonneborn-Berger (**34F**) and/or Kashdan (**34E.7**) are better for round-robin formats.

## THE 2005 MCA TRIPLE HEADER

By Steve Scarff, TD

The 2005 MCA Triple Header was held in Bozeman on September 24-25. Several local players were joined by others from Great Falls, Billings, and Livingston in the competition for three Montana championship titles. Saturday began with the Action Championship, and three new MCA members from the ranks of MSU students: Tim Mullins (Connecticut), Oscar Perez (Venezuela), and Muhammedin Deliorman, (Turkey). This event featured a strong field, with an average quick chess rating of 1621 among the nine rated players. Mullins (1509) walked off with 4 points and first place, with draws against the second place finishers, Jens Lundell (1837) and Haluk Beyenal (1754), plus an upset win over David Duke (1758). Kirk (the Giant-Killer) Lundby (1469) furthered his reputation by beating Lundell in round two in a battle between the highest and lowest rated players in the tournament.

Saturday night's Speed Championship was a 9-player round robin, with another MSU student and new MCA member, David Fouchard (France), joining eight of the players from the Action Championship. Lundell scored 5.5 points in the first six rounds and was ready to sweep the field until Lundby repeated his magic and upset him again! Okay, Kirk, tell us how you do it. This allowed Beyenal to catch up and share the championship title with Lundell. Both finished with 6.5 out of 8, their meeting in round 2 having resulted in a draw. Lundby finished in sole possession of third place with 6 points.

By the time of the Quick Championship on Sunday, the field had dwindled to seven players. This time Lundell took the championship with 4.5 points. Only a draw with Duke in round two kept him from having a perfect score. Beyenal and Duke shared second place with 3.5 each. The biggest rated upset on Sunday came when Mullins beat Duke in round four.

When it was announced during Saturday's Action Championship that first place trophies for the three events would be ordered after the tournament, Haluk made the suggestion that instead of purchasing trophies, proceeds from the tournament be sent to help the victims of the recent hurricanes along the Gulf coast. This sentiment was approved unanimously by the players, and a donation of \$162 for the hurricane victims has been sent to the American Red Cross on behalf of the MCA. Thanks to all the Triple Header participants for your generosity.

**(1)David Duke (1758) – Tim Mullins (1509) [D13]**

Montana Action Championship Bozeman, MT (1), 24.09.2005  
 1.c4 c6 2.d4 d5 3.cxd5 cxd5 4.Nf3 Nc6 5.Nc3 Nf6 6.Bf4 a6 7.e3 e6 8.Bd3 Be7 9.0-0 0-0 10.Rc1 Bd7 11.Ne5 Rc8 12.Na4 Nb4 13.Rxc8 Qxc8 14.Bb1 Bxa4 15.Qxa4 b5 16.Qb3 Qb7 17.a3 Nc6 18.Qd3 Rc8 19.Rc1 Na5 20.Rxc8+ Qxc8 21.h3 Nc4 22.b4 Ne4 23.f3 Nb2 24.Qc2 Qxc2 25.Bxc2 Nc3 26.Nc6 Bf6 27.Nb8 Ne2+ 28.Kf1 Nxf4 29.exf4 Nc4 30.a4 Ne3+ 0-1

**(3) Muhammedin Deliorman - Steve Scarff (1542) [E21]**

Montana Action Championship Bozeman, MT (1), 24.09.2005  
 1.d4 Nf6 2.c4 e6 3.Nc3 Bb4 4.Nf3 b5 5.e3 bxc4 6.Bxc4 d5 7.Qa4+ Bd7 8.Qxb4 Nc6 9.Qb5 dxc4 10.Ne5 Ne7 11.Nxd7 Qxd7 12.Qxc4 Rb8 13.0-0 0-0 14.Qe2 c6 15.b3 Ned5 16.Nxd5 cxd5 17.Ba3 Rfc8 18.Rac1 Rb7 19.f3 Rbc7 20.Rxc7 Rxc7 21.Bc5 Qc8 22.a4 Nd7 23.b4 Nb6 24.a5 Nc4 25.e4 Qd7 26.exd5 Qxd5 27.Rc1 Nd6 28.Qd2 Nb5 29.Qf4 Rc8 1-0 Score sheets ends here and Muhammedin wins at the blitz

**(5) Steve Scarff (1542) –David Duke (1758) [D00]**

Montana Action Championship Bozeman, MT (2), 24.09.2005  
 1.d4 Nf6 2.f3 d5 3.e4 dxe4 4.Nc3 exf3 5.Nxf3 g6 6.Bc4 Bg7 7.0-0 0-0 8.Bg5 c6 9.Qe2 Nbd7 10.Rae1 Re8 11.Qd2 Nb6 12.Bb3 Nbd5 13.Ne4 b6 14.Bh6 Ba6 15.c4 Nc7 16.Bxg7 Kxg7 17.Ne5 Ne6 18.Nxc6 Qc7 19.d5 Nc5 20.Nxc5 bxc5 21.Rf3 Bc8 22.Bc2? (Rxf6) Score sheets end here, but White goes on to win) 1-0

**(2)Spencer Olmsted (1627) - Oscar Perez [B70]**

Montana Action Championship (1), 24.09.2005  
 1.e4 c5 2.Nf3 d6 3.d4 cxd4 4.Nxd4 Nf6 5.Nc3 g6 6.Nf3 a6 7.e5 Ng4 8.exd6 exd6 9.Bg5 Qb6 10.Qe2+ Be6 11.h3 Qxb2 12.Rb1 Qxc3+ 13.Bd2 Qxc2 14.Rxb7 Nxf2 15.Qxf2 Qe4+ 16.Be2 Qxb7 17.0-0 Bg7 18.Ng5 0-0 19.Nxe6 fxe6 20.Bf3 Nc6 21.Qe3 Bd4 22.Qxd4 Nxd4 23.Bxb7 Ne2+ 24.Kh2 Rab8 25.Rxf8+ Rxf8 26.Bxa6 Ra8 27.Bxe2 Rxa2 28.Bc4 Rxd2 29.Bxe6+ Kg7 30.Bg4 d5 31.Kg3 g5 32.Bf3 d4 33.Kg4 Kf6 34.Be4 h6 35.Kh5 Kg7 36.Kg4 Rf2 37.Kg3 Rf4 38.Bd3 Kf6 39.Be2 Ke5 40.Bf3 d3 41.Kf2 Kd4 42.Ke1 Ke3 43.Kd1 d2 44.Kc2 Rc4+ 45.Kb2 Kf2 0-1

**(4) Jens Lundell (1837) -Kirk Lundby (1469) [D31]**

Montana Action Championship Bozeman, MT (2), 24.09.2005  
 1.d4 e6 2.c4 d5 3.Nc3 dxc4 4.e4 Bb4 5.Bxc4 c5 6.a3 Bxc3+ 7.bxc3 Ne7 8.Nf3 0-0 9.0-0 Qc7 10.Qe2 a6 11.a4 Qa5 12.Bf4 Nd7 13.Rfc1 Ng6 14.Bg3 Re8 15.h4 e5 16.h5 score sheets ends here and Lundby wins the game 0-1

**(6) Tim Mullins (1509) - Haluk Beyenal (1754) [E46]**

Montana Action Championship Bozeman, MT (3), 24.09.2005  
 1.d4 Nf6 2.c4 e6 3.Nc3 Bb4 4.Bd2 0-0 5.e3 d5 6.a3 Bd6 7.Nf3 c6 8.Bd3 Nbd7 9.0-0 dxc4 10.Bxc4 b5 11.Ba2 b4 12.axb4 Bxb4 13.Qa4 a5 14.Qxc6 Ra6 15.Qc4 Bb7 16.Qe2 Rc6 17.Rac1 Ba6 18.Nb5 Rxc1 19.Rxc1 Bxd2 20.Nxd2 Qb8 21.Bc4 Rc8 22.Na3 Qxb2 23.Rb1 Qxa3 24.Bxa6 Rc1+ 25.Rxc1 Qxc1+ 26.Nf1 Ne4 27.f3 Nd6 Black had to leave and offered a draw! ½-½

**Montana Quick Championship, 2005 cross table**

#	Name	Qk Rtnng	Rd 1	Rd 2	Rd 3	Rd 4	Rd 5	Total
1	Jens O Lundell	1837	W4	D3	W2	W7	W5	4.5
2	Haluk Beyenal	1754	H---	W5	L1	W6	W4	3.5
3	David A Duke	1758	W7	D1	W5	L4	B---	3.5
4	Timothy E Mullins	1509	L1	W6	W7	W3	L2	3.0
5	Steven R Scarff	1542	W6	L2	L3	B---	L1	2.0
6	Muhammedin Deliorman	unr.	L5	L4	B---	L2	W7	2.0
7	Kirk O Lundby	1469	L3	B---	L4	L1	L6	1.0

**Montana Speed Championship, 2005 cross table**

#	Name	Qk Rtnq	Rd 1	Rd 2	Rd 3	Rd 4	Rd 5	Rd 6	Rd 7	Rd 8	Rd 9	Total
1	Haluk Beyenal	1754	W5	D2	W6	U---	W7	D4	W9	D8	W3	6.5
2	Jens O Lundell	1837	W6	D1	W7	W4	W9	W8	L3	W5	U---	6.5
3	Kirk O Lundby	1469	W7	W4	W9	W8	U---	L5	W2	W6	L1	6.0
4	David A Duke	1758	W8	L3	W5	L2	W6	D1	W7	U---	W9	5.5
5	Timothy E Mullins	1509	L1	W7	L4	W9	W8	W3	U---	L2	W6	5.0
6	Steven R Scarff	1542	L2	U---	L1	W7	L4	W9	L8	L3	L5	2.0
7	Spencer Olmsted	1627	L3	L5	L2	L6	L1	U---	L4	W9	W8	2.0
8	David Fouchard	unr.	L4	L9	U---	L3	L5	L2	W6	D1	L7	1.5
9	Stephen Tamang	1515	U---	W8	L3	L5	L2	L6	L1	L7	L4	1.0

**Montana Action Championship, 2005 cross table**

#	Name	Qk Rtnq	Rd 1	Rd 2	Rd 3	Rd 4	Rd 5	Total
1	Timothy E Mullins	1509	W5	W10	D3	D2	W4	4.0
2	Jens O Lundell	1837	W6	L4	W11	D1	W3	3.5
3	Haluk Beyenal	1754	W7	W11	D1	W4	L2	3.5
4	Kirk O Lundby	1469	B---	W2	W8	L3	L1	3.0
5	David A Duke	1758	L1	L8	W7	W6	W9	3.0
6	Stephen Tamang	1515	L2	W9	W10	L5	W8	3.0
7	Michael J Long	1505	L3	B---	L5	W11	W10	3.0
8	Steven R Scarff	1542	L10	W5	L4	B---	L6	2.0
9	Spencer Olmsted	1627	L11	L6	B---	W10	L5	2.0
10	Muhammedin Deliorman	unr.	W8	L1	L6	L9	L7	1.0
11	Oscar G Perez	unr.	W9	L3	L2	L7	U---	1.0



## THE SATURDAY SPECIAL – BOZEMAN

By Haluk Beyenal

During one of Bozeman's University Chess Club meetings, Spencer Olmsted came up with an idea of playing chess tournaments Saturdays. As we all know, we do not have very many players in the area, but we agreed to play even if only a few players showed up. The first Saturday Special started 2 years ago with 4 players. From time to time several players from Bozeman met and played on Saturdays. But over time the Saturday special disappeared. Recently, due to personal reasons, I could not make Wednesday night chess club meetings and decided to promote Saturday chess tournaments. We had the first one October 29 with 6 players with an average rating around 1600. It was an unrated event and we played a round robin, 5 games with game 25 minutes with 10 seconds delay. The time was sufficient and there were no losses due to time trouble. The players played very well and enjoyed the tournament. Meanwhile, I must mention that the coffee and food were great in the Food Coop. Since there were empty tables, they did not mind us playing chess.

I noticed that these tournaments are an opportunity for chess players who do not have tournament experience. The Saturday Special is a tournament, and the players play very serious chess. You feel the pressure and you must be very careful if you want to win. The tournament costs you nothing, and you get experience.

At the first Saturday Special, we had Chris Owen from Billings, and I played him in the last round. Below is my game with him. He played very good chess and lost by just one simple blunder in the end game. During the game we did not keep a score sheet, so after I went home I replayed the game and analyzed. He is a good player. He lost many games in this tournament with blunders, but got the experience. In the future tournaments, he will knock some out!

I suggest players in Bozeman or any other town in Montana come and join us. You will get the experience you need, and test your openings. I appreciate if you call me before you show up so we can assure that we have a clock and chess set and place for you in the tournament.

### Chris Owen - Haluk Beyenal (The Saturday Special, October 29, Bozeman)

1.e4 e5 2.Nf3 Nf6 3.Nc3 Nc6 4.Bb5 Bc5 5.0-0 d6 6.d4 exd4 7.Nxd4 Bd7 8.Nxc6 bxc6 9.Bc4 0-0 10.Bg5 h6 11.Bh4 Be6 12.Qd3 g5 13.Bg3 Rb8 14.Na4 [14.Bxe6 fxe6 15.e5 Nh7 16.Qg6+ Kh8 17.Ne4 Black is in big trouble] 14...Rb4 15.Bxe6 Rxa4 16.Bf5 Re8 17.Rfe1 Rd4 18.Qf3 Rd2 19.Re2 Rxe2 [19...g4 the move it is impossible to miss. White wins a piece. 20.Bxg4 Rxe2 21.Qxe2 Rxe4 22.Qf3 Rxg4] 20.Qxe2 Qe7 [20...Nxe4 may be a cleaner continuation for Black 21.Bxe4 d5 22.Qh5 Rxe4 23.Qxh6 Bd6] 21.Re1 Nd7 22.Kf1 Bd4 23.c3 Be5 24.Bxe5 Nxe5 25.g3 Qf6 26.f4 gxf4 27.gxf4 Chris is attacking from the right side of the board 27...Ng6 28.Qg4 Qh4 29.Bxg6 Chris gives a gift to Haluk [29.Qxh4 Nxh4 30.Bd7 Rb8 31.Re2 Ng6 32.Rf2 c5 33.b3 White has a bishop which is more active than Black's knight and controls the center. Although material-wise it's equal, White has some advantages] 29...Qxg4 0-1

## GREG NOWAK WINS 2005 EASTERN IDAHO CHESS TOURNAMENT!

By Haluk Beyenal

I must mention that there is no typo, its "Idaho" not "Montana". No one managed to stop Greg in the field but he took a half point easy night break for round 3. He got 4.5 points: 4 wins and 0.5 point bye. Two Montana players played in 2005 Eastern Idaho chess tournament on September 10-11, 2005. The other Montana chess player was Stephen Tamang, who got 9<sup>th</sup> place with 2 points. The Idaho players ran out of bullets and paired Tamang with Nowak, but Tamang was not able to stop him. Greg Nowak sent me 2 of his games. I spent half an hour reading his score sheets and finally I quit. Our editor would prefer electronic copy of games and tournament announcements. In addition, we'd like to see Greg to play more chess in Montana.

### THE BEST AND WORST SCORE SHEET AWARD!!

I wonder if some of us try to read our score sheets and review our games. I bet not many of us can do it! As an editor, part of my duty is to select the games to publish. I figured out that it was not about selecting, it was about reading the score sheet. So far, almost 2 out of 10 sheets are readable. I call a readable sheet one with good hand-writing and correct notation. All the written moves should be correct and legal so I can transfer them to a computer program. I am having a hard time selecting the games because most of them are either incorrect or unreadable, so I decided to propose the best and the worst score sheet award!! I haven't decided yet what to offer, but I am ready to hear ideas.

Please during the game try to keep your score sheet as accurate as possible. If you want your game to be considered for publication or analyzed in MCN, please send me an electronic copy. I appreciate any help.

Haluk Beyenal

### 2005 TURKEY OPEN by Bill McBroom, T.D.

A total of twenty-five players participated in the 2005 Turkey Open: twenty-two in the Open and three in the special section for previously unrated players. Some old friends joined us: Tom Booth, now of Idaho, and Arman Goplen, who has been living in North Dakota since his retirement from the Math Department at FVCC, traveled to Missoula for the event. Arman even brought along, Clifford Berger, a strong B player from North Dakota. A local old friend—to chess—joined us. Aaron Hitchcock played chess in Hansen's Ice Cream store during the Fischer Boom. Glad to have you with us, Aaron.

We also welcomed seven of our friends from Spokane. Two of whom were among the notorious young tigers those of us who play in Spokane have learned to give enormous respect. In this instance, they were Zachary Countryman, who earned a plus score, and Alex Chow, who posted an even score. Last August in Spokane, this T.D. (Bill McBroom) asked Alex's dad, Ward, if Alex would like to come to Missoula to play. The Dad inquired whether there would be other young players. I said, "No, but there would be lots of adults he could beat." And he did.

Keeping up his past standard of generosity, David Griffin of Spokane, donated an MCA membership to the strongest Spokane finisher. Ron Weyland, who also won the biggest upset of 317 points by besting Bob Martin, earned the membership on tie breaks from John Julian. David also donated \$26 to UCCC. Thanks, Dave, we appreciate your friendship and support!

In the open section Great Falls' Jim Skovron and Paul Kezmann, newly relocated to Missoula from Brooklyn, New York, tied with four points each to split the first and second prizes. Paul, playing in his first rated tournament, earned a performance rating of 2025! He admitted to playing a good deal of Internet speed chess—four or so hours a day. Watch out for him. His mantra is to keep making threats—always a good idea in chess.

John Julian, from Spokane, and Missoula's Romie Carpenter, together with Washington's Ron Weyland and Clifford Berger from North Dakota, all earned 3 ½ points. John Julian, by the way played an end game in round three against Tom Booth that is worth a careful look. John had the Bishop and Tom the Knight in a minor piece ending. Each had Pawns in the wings. Not only did John win, but he mated Tom without promoting a Pawn. John, some of you may remember, got

a draw in an end game with Greg Nowak a few years back. John played the last twenty or so moves in that game with less than 20 seconds on his clock.

Speaking of end game draws, Alex Chow played a Rook and two-Pawns-down ending against Tom Booth, who a Bishop and Knight in addition to the extra Pawns, and fought Tom to a draw. Their game is worth a look.

The visitor from North Dakota, Clifford Berger, earned the best under 1800 prize There was a three-way tie for the best under 1400: Aaron Hitchcock of Missoula, Nick Doulas of Great Falls, and Sidney Williamson of Bozeman.

While there were not enough entered to pay the full prize fund (which was based on 30 paid adults), no one seemed to mind as they were having fun. Players seemed to like the site: Grant Creek Best Western Motel. It was easy to find (just off the Interstate) and not only was there a complimentary hot breakfast for those staying there, the place also had an indoor pool. Several were seen to take advantage of this amenity.

UCCC tried something new in this tournament: a rated section for previously unrated players. Three participated. James Amaral of Great Falls won the game timer clock and Mac Widdicombe of Missoula walked off with the set, board, and tote. We hope you folks will come to play rated tournaments with Montana clubs.

**John Julian – Romie Carpenter [A69]**

Turkey Open, 2005 1.d4 Nf6 2.c4 g6 3.Nc3 Bg7 4.e4 d6 5.f4 c5 6.d5 0-0 7.Nf3 e6 8.Be2 exd5 9.cxd5 Re8 10.Nd2 Nbd7 11.0-0 a6 12.a4 b6 13.Bf3 Rb8 14.Nc4 Qc7 15.Na3 c4 16.Re1 Nc5 17.e5 Nd3 18.Re3 dxe5 19.fxe5 Nxe5 20.Bd2 Qc5 21.Kh1 Bd7 22.Rxe5 Rxe5 23.Bf4 Re2 24.Qxe2 Rc8 25.Rd1 b5 26.axb5 axb5 27.Be3 Qb4 28.Qd2 Qb3 29.Nc2 b4 30.Ne2 Ne4 31.Qc1 Bxb2 32.Qb1 Nc3 33.Nxc3 Qxc3 34.Bd4 Qb3 35.Qxb2 Qxb2 36.Bxb2 Ba4 37.Rc1 c3 38.Na3 Rd8 39.Bxc3 bxc3 ½-½

**Sid Williamson – Kevin Kosmo [B07]**

Turkey Open 2005 1.e4 d6 2.d4 Nf6 3.Bd3 g6 4.Nc3 Bg7 5.Nge2 Nc6 6.0-0 0-0 7.f3 e5 8.d5 Nb4 9.a3 Nxd3 10.Qxd3 c6 11.Be3 cxd5 12.Nxd5 Nxd5 13.Qxd5 Re8 14.Rfd1 Bf8 15.Nc3 Be6 16.Qxb7 Rb8 17.Qxa7 Re7 18.Qa6 Rxb2 19.Bg5 Qc8 20.Bxe7 Qxa6 21.Rxd6 Qa7+ 22.Kh1 Bxe7 23.Rc6 Rxc2 24.Nb5 0-1

**Tom Booth – Alex Chow [E60]**

Turkey Open 2005 1.Nf3 Nf6 2.c4 g6 3.d4 Bg7 4.e3 0-0 5.Nc3 d6 6.Be2 Nbd7 7.0-0 e5 8.dxe5 Nxe5 9.e4 Be6 10.Nxe5 dxe5 11.Bg5 c6 12.Qc2 Qc7 13.Rad1 Nd7 14.Be7 Rfe8 15.Bd6 Qa5 16.b4 Qd8 17.c5 b6 18.Qd2 Qf6 19.Qe3 Rac8 20.a4 Bf8 21.Bxf8 Rxf8 22.Rd6 Qe7 23.Rfd1 f5 24.exf5 gxf5 25.Qh6 Rf6 26.Qg5+ Kh8 27.Rxd7 Bxd7 28.Rxd7 Qxd7 29.Qxf6+ Qg7 30.Qxf5 Rd8 31.g3 Rf8 32.Qe4 Qf6 33.Nd1 Qg6 34.Qxg6 hxg6 35.Nc3 Rb8 36.cxb6 axb6 37.Kg2 Kg7 38.a5 bxa5 39.bxa5 Ra8 40.a6 Kf6 41.Kf3 Rb8 42.Ne4+ Kf5 43.Nc5 e4+ 44.Nxe4 Rb3+ 45.Kg2 Kxe4 46.a7 Ra3 47.Bf3+ Kf5 48.Bxc6 Rxa7 49.Bd5 Rd7 50.Ba8 ½-½

**Kevin Korsmo – Jim Sokovron [B18]**

Turkey Open, 2005 1.e4 c6 2.d4 d5 3.Nc3 dxe4 4.Nxe4 Bf5 5.Ng3 Bg6 6.Nf3 Qc7 7.Bc4 Nf6 8.c3 Nbd7 9.0-0 0-0-0 10.a4 e5 11.Qb3 Nb6 12.Nxe5 Nxc4 13.Qxc4 Nd5 14.b4 f6 15.Nf3 Bf7 16.Qd3 Nb6 17.a5 Nc4 18.Qf5+ Kb8 19.Bf4 Bd6 20.Bxd6 Nxd6 21.Qc2 g5 22.Rfc1 Bg6 23.Qb2 Rhe8 24.c4 Qf7 25.b5 Nxc4 26.Qb4 cxb5 27.Qxb5 Nd6 28.Qb4 h5 29.Rc6 Qd5 30.Rac1 h4 31.R1c5 Qf7 32.Rc7 Rd7 33.Rxd7 Qxd7 34.Nf1 Ne4 35.Rc1 h3 36.g3 Bh5 37.Ne1 f5 38.a6 b6 39.Qb3 Qxd4 40.Ne3 f4 41.N1c2 Qd2 42.Nd1 Bxd1 43.Qf7 Qxf2+ White resigns 0-1

**Sid Williamson – Ron Erikson [B21]**

Turkey Open 2005 1.e4 c5 2.d4 cxd4 3.c3 dxc3 4.Nxc3 Nc6 5.Nf3 d6 6.Bc4 e6 7.0-0 Be7 8.Bf4 a6 9.Rc1 Nf6 10.Re1 0-0 11.e5 dxe5 12.Nxe5 Nxe5 13.Bxe5 Bd7 14.Ne4 Nxe4 15.Rxe4 Bc6 16.Rg4 g6 17.Qd2 Qb6 18.h4 Bb5 19.h5 Bxc4 20.Rcxc4 Rac8 21.hxg6 fxg6 22.Qc3 Rxc4 23.Rxg6+ Kf7 24.Rg7+ Ke8 25.Qxc4 Qxf2+ 26.Kh2 Qf5 27.Qc8+ 1-0

2005 Turkey open cross table

	PLAYER	RATE	RD 1	RD 2	RD 3	RD 4	RD 5	TOT
1	Skovron, J	1826	W11	W9	bye	W7	D2	4
2	Kezmann, P	unr	W15	D3	W8	W5	D1	4
3	Julian, J	1991	D11	D2	W11	W8	D4	3.5
4	Carpenter, R	1800	D12	W20	bye	W9	D3	3.5
5	Berger, C	1794	W13	W6	D7	L2	W10	3.5
6	Weyland, R	1455	W10	L5	W15	W14	D7	3.5
7	Korsmo, K	1696	W16	W17	D5	L1	D6	3
8	Brendemihl, S	1679	W21	W18	L2	L3	W12	3
9	Countryman, Z	1460	W14	L1	W18	L4	W15	3
10	McCourt, D	1682	L6	W13	W17	D12	L5	2.5
11	Booth, T	1550	L1	W22	L3	W17	D13	2.5
12	Griffin, D	1500	D3	W14	bye	D10	L8	2.5
13	Chow, A	1472	L5	L10	W21	W18	D11	2.5
14	Martin, R	1772	L9	L12	W16	L6	bye	1.5
15	Goplen, A	1638	L2	W21	L6	D16	L9	1.5
16	Douglas, N	1309	L7	L19	L14	D15	bye	1.5
17	Williamson, S	1135	W19	L7	L10	L11	bye	1.5
18	Hitchcock, A	1100	W22	L8	L9	L13	D21	1.5
19	Erickson, R	1677	L17	W16	with	drew	--	1
20	Tamang, S	1620	D1	L4	bye	with	drew	1
21	Jaroski, J	1245	L8	L15	L13	bye	D18	1
22	Spencer, W	453	L18	L11	with	drew	--	0

**UPCOMING EVENTS**

**Yuletide Open**

December 3, Saturday, Bozeman

*Joyce's January Thaw*

*January 28-29, 2006, Helena*

**MIDWINTER OPEN**

FEBRUARY 4, 2006, MSU campus, Bozeman, MT

**71<sup>st</sup> Montana Open**

APRIL 1-2, 2006 in Helena at the Red Lion Colonial Hotel

# UPCOMING EVENTS

For newest information and updates visit [www.montanachess.org](http://www.montanachess.org)

## Yuletide Open December 3, 2005, Bozeman

**Time Control:** Game/30

**Location:** Room 106E Strand Union Building, Montana State University campus, Bozeman

**Description:** MCA Grand Prix event, 5 round Swiss

**Entry Fee:** \$10 if received by 12/1; \$20 at site; 19 & under half price.

**Registration:** 9:00-9:20am.

**Rounds:** 9:30, 10:40, 12:50, 2:00, 3:10 or ASAP.

**Trophies for 1st, 2nd, U1600, U1200/Unrated, Biggest Upset.**

**Half point byes must be requested before round 2.**

**Ratings:** Regular ratings to be used for pairings. Results will apply to both Regular and Quick ratings.

**Wheelchair access, no smoking, no computers.**

**Time control shortened this year to allow participants to attend Bozeman's 25th annual Christmas Stroll, 4:30-7:30. See**

**<http://visitmt.com/categories/moreinfo.asp?IDRRRecordID=8939&SiteID=>**

**Contact:** Steve Scarif, [steve@bridgeband.com](mailto:steve@bridgeband.com) or 406-586-4479 (no phone entries).

**Advance entries payable to University Chess Club, SUB Box 23, Bozeman, MT 59717**

## Joyce's January Thaw January 28-29, 2006, Helena

**Time Control:** G/90

**Location:** Colonial Inn, ph. 800-Red Lion \$63sgl \$69 dbl

2301 Colonial Drive, Helena, MT

Five rounds, Swiss pairings, MCA Grand Prix

Reg: 10:15-10:45

Rds: 11, 2:30, 7pm....9am, 12:30

EF: \$25 by Jan 27, \$30 at site Jrs at 1/2

**Prizes:** \$\$b/\$300 entries, 1st \$50, 2nd \$30, 3rd \$20, Awards to top two juniors, \$20 each to Top 1400-1599, Top 1100-1399, Top UNR-1099, \$20 Top Upset (both players non-prov)

**Entries and information:** Mel Drake (no phone entries, please)

**Contact:** Mel Drake, 5950 Canyon Ferry Road, Helena, MT 59602 Phone..406-475-3481

**MIDWINTER OPEN**  
**FEBRUARY 4, 2006, Bozeman**

**Time Control:** Game/45  
**Location:** Room 106E Strand Union Building, Montana State University campus, Bozeman  
**Description:** MCA Grand Prix event, 5 round Swiss  
**Entry Fee:** \$10 if received by 2/2; \$20 at site; 19 & under half price.  
**Registration:** 9:00-9:20am.  
**Rounds:** 9:30, 11:00, 1:30, 3:00, 4:30 or ASAP.  
**Trophies for 1st, 2nd, U1600, U1200/Unrated, Biggest Upset.**  
**Half point byes must be requested before round 2.**  
**Ratings:** Regular ratings to be used for pairings. Results will apply to both Regular and Quick ratings.  
**Wheelchair access, no smoking, no computers.**  
**Contact:** Steve Scarff, [steve@bridgeband.com](mailto:steve@bridgeband.com) or 406-586-4479 (no phone entries).  
**Advance entries payable to University Chess Club, SUB Box 23, Bozeman, MT 59717**

**71<sup>th</sup> Montana Open**

Where: Red Lion Colonial Hotel, 2301 Colonial Drive; Helena, Montana

When: April 1 and 2, 2006

EF: \$30 by April , \$35 at the door; juniors (under age 19) half price

Format: 5 R SS, Game in 120 (insufficient losing chances rule in effect); Full K

On-site Registration: 9:00 a.m.-9:30 a.m., mandatory players' meeting 9:50 a.m.

Rounds: Saturday, 10:00 a.m., 2:30 p.m., and 7:00 p.m.; Sunday 9:00 a.m., 2:00 p.m. (or A.S.A.P.)

Prizes: (based on 30 paid adults) 1st=\$150, 2nd=\$75, 3rd=\$50, best A=\$40, best B=\$30, biggest upset (both must have established ratings)=\$20, and trophies top senior (age 55+) and junior (under age 19)

Entries/Information: Nick Doulas; 523-27th Street, South., Great Falls, MT 59405;  
1.406. 899.4664 /[doulas41@bresnan.net](mailto:doulas41@bresnan.net); checks payable to MCA.

Misc.: No phone entries, no computers, no smoking, no wheel chair access

## 2006 MONTANA CLOSED CHAMPIONSHIP AND BARTO MEMORIAL

Where: Red Lion Colonial Hotel, 2301 Colonial Drive; Helena, Montana

When: June 3 and 4, 2006

EF: \$25 by May 28, \$30 at the door; juniors (under age 19) half price

Format: 5 R SS, Game in 120 (insufficient losing chances rule in effect); Full K

On-site Registration: 9:00 a.m.-9:30 a.m., mandatory players' meeting 9:50 a.m.

Rounds: Saturday, 10:00 a.m., 2:30 p.m., and 7:00 p.m.; Sunday 9:00 a.m., 2:00 p.m.  
(or A.S.A.P.)

Prizes: Championship Section (no EF for qualifiers)= Plaque for champion  
Barto: (based on 15 paid adults) 1st=\$75, 2nd=\$50

Entries/Information: William H. McBroom, 2321 Raymond; Missoula, Montana  
(406.728.4654) checks payable to MCA.

Misc.: No phone entries, no computers, no smoking, no wheel chair access