

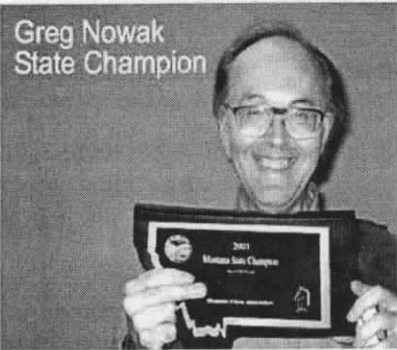
Montana Chess News



Montana Chess Association



Editor — Dan McCourt
dmcc@rmttnet.com



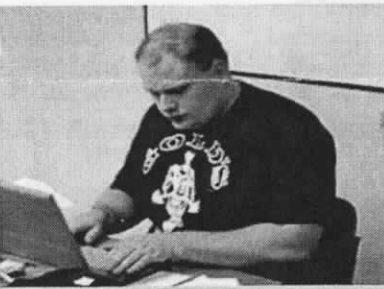
Greg Nowak
State Champion

MISSOULA EXPERT TAKES TOP TROPHY

Greg Nowak employed a new twist on an old sports aphorism—"A good Shooter also gets the lucky bounces" as he cruised to a convincing 5-0 score and sole possession of the 2003 Montana Championship.

Playing like an 'octopus on a mission', Nowak gradually took control of each contest—game tempo, board space, clock time, scoresheets, pencils, even the coffee cups. The Bozeman Chronicle, picking up on a press release of mysterious origin, reported the final margin to be 6-0. Not bad for a 5-round tournament. So, perhaps, there has been some exaggeration. Indeed, some of the contests were struggles to the end as evidenced by The Champ's first 1st round victory in which colossal time trouble obscure from the opponent a drawn position despite the disadvantage of a lone king versus bishop and pawn. A "lucky bounce", perhaps, but such bounces are generally the result of good technique and sustained concentration. And so it went...a fine two-day performance for Greg Nowak.

(continued...Nowak... on page 3)



Presiding Poobah in action at the Barto

MESSAGE FROM NICK DOULAS

Hello everyone! Greetings from Great Falls home of the Great Falls Chess Club. I am very proud of having the unique honor of serving you as the President of the Montana Chess Association.

We are truly an international organization, made up of different countries, cultures, and languages. But wherever or whoever we are, we realize that playing and learning from chess will inevitably change us in many different ways. That's why I

have chosen this theme Teach, Play, and Learn as my goals for this next year.

I have long been a fan of this quote:

A man ceases to be a beginner in chess and becomes a master when he has learned that ...he is going to be a beginner all his life. (Paraphrased from R. G. Collingwood {1889-1943}, British philosopher. The New Leviathan, pt. 1, ch. 1, aph. 46 {1942}). I have a dream that we can build on this idea and develop chess in Montana

from both the adult and youth perspective.

I firmly believe that this dream can become a reality. I also believe that the skills and increased confidence we all gain from learning and teaching chess will help us achieve a sense of accomplishment and fulfillment. In fact, our organization's goals are to develop, enhance, and teach chess to help our society in addition to having fun playing chess.

All success starts with a (Doulas...continued)

(Continued...Doulas...on page 2)

INSIDE THIS ISSUE:

Grand Prix at the 1st turn	2
Closed and Barto games	3-5
Chinook Chess Great Falls	6-9
Chinook Scholastic Great Falls	10-11
University Chess Club Bozeman	12-13
Turkey standings	14
Upcoming Events	15





Montana Chess Association

MCA Board Members

Nick Doulas—President (899-4664)
523 27th St. S. Great Falls, MT 59405
doulas41@bresnan.net

Jim Skovron—Vice-President (771-0630)
3405 Kingwood, Great Falls, MT 59404
skovron5@hotmail.com

Bill McBroom—Western V.P. (728-4654)
2321 Raymond, Missoula, MT 59802
whm@selway.umt.edu

Haluk Beyenal—Eastern V.P. (994-2269)
118F Julia Martin Drive,
Bozeman, MT 59715
beyenal@erc.montana.edu

Dan McCourt—Sec/Treas/Editor
721-0254 dmcc@rmtnet.com
608 West Central, Missoula, MT 59801

Montana Chess News is published by the Montana Chess Association, an affiliate of the U.S. Chess Federation. Subscription and membership in the MCA is \$12/yr regular, \$6/yr junior (Under 20), \$15 Family. Discounted 3year rate: \$25 regular, \$12 junior, \$35 family. First time players who are also new to the USCF shall have their first year's membership fee waived

Editor—Dan McCourt

608 West Central
Missoula, MT 59801
E-mail: dmcc@rmtnet.com

Publishing Schedule:

Issue 1—Mar 1, Issue 2(Special for the Open), Issue 3—July 31, Issue 4—Sept 25, Issue 5—Dec 8. Deadline for most submissions is ten days before publication date.



dream, so we must first imagine what it is that we want to achieve. However, the dreams we have today may not be the dreams we had yesterday or even next year. The miracle of chess, whether it be through teaching or playing, is that as our self confidence and self esteem grows, so does our awareness of our potential to affect the people around us. Because of this, we go to our dream of even greater things to accomplish. This could be developing the chess skills of an adult who wants to learn chess or directing a state wide scholastic tournament. When we first joined the Montana Chess Association our dreams may have been very simple—to have solid game against our opponent or to win our first tournament game! Later, our dreams may be to win a tournament, increase our rating, or to serve as an officer in our club or the MCA. What happens is that our awareness of our potential changes. We are now ready to accept more and more challenges secure in our knowledge that we are ready for them. So take on the challenge of mentoring people trying to learn chess, become active in your club, try to go to as many tournaments as you can, and develop your chess game to the best of your ability this will help everyone become stronger as individuals and as a group.

Remember, your dream(s) is your potential! So why not accept the challenge? This is the year to make your dreams come true! Good Luck! and lets have some fun playing CHESS!

Nick Doulas

Montana Chess Association President- 2003-2004

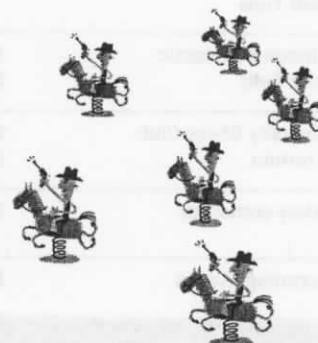
It's rocket science!...no!, it's alchemy!... No!, it's smoke and mirrors!! Ok sharks and fishies, it's time for your annual dose of impractical mathematics. Sink your teeth into the **MCA Grand Prix Points Calculator** and give it a good chew. Don't forget to floss when you're done.

Unrateds=tournament opponents average + 400(W-L)/N
where N=number of games vs rated opponents if>zero
Mileage bonus: LT 50=1.0; 50-150=1.33; 151-250=1.68; GT 251=2.0
GP=(rds/5) x (11-place) x (avg rating/1500) x mileage bonus

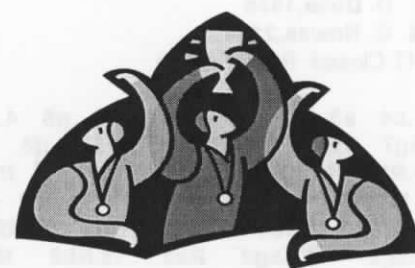
Heading up the Posse for the 2003-2004 Grand Prix chase (as of the Chinook)

- Ron Erickson 15.7
- Sergiy Dzyuban 13.8
- Eric Hongisto 9.7
- Jim Skovron 7.3
- Doug Hansen 7.3
- Freddie Jay 4.2

(Thanks to Bill McBroom for ciphering the numbers. Let us know if you ciphered otherwise.)



NOWAK, HONGISTO, OLMSTED, SNAG TOP HARDWARE AT CLOSED/BARTO



(Nowak...continued from front page)

In the room next door, Eric Hongisto was sweeping to a perfect 5-0 in the Barto Memorial G/45 on Saturday. Playing in his first ever rated event, Eric came away with an stupendous 2096 rating and, of course, instant designation as one of the State's top targets.

Conrad Donovan came in 2nd, losing only to Hongisto.

Top place in the Sunday morning Quick event came down to the last game. Spencer Olmsted won that game and 1st place, ending the Hongisto nine-game skein without a loss. Eric's 3.5 score was still sufficient for sole possession of 2nd place. Besides trophies for winning the individual tourneys, awards were also made for cumulative scores over the course of the weekend.

Steve Tamang's 489 point upset win earned him that trophy, while best under 1600 and 1400 went to Kirk Lundby and Nick Doulas respectively. Ryan Newhouse took the provisional-unrated award and Emil Mammadov scored the top scholastic trophy. Trophy winners also got small cash prizes.

See pages 4-5 for games from the Barto/Closed

Montana Championship 2003

#	Name	Rtng	Rd 1	Rd 2	Rd 3	Rd 4	Rd 5	Tot
1	Nowak, Gregory W.	2134	W4	W2	W5	W3	W6	5.0
2	Kuba, J. C.	1889	W6	L1	W3	W4	D5	3.5
3	Beyenal, Haluk	1741	W5	W6	L2	L1	D4	2.5
4	Duke, David A.	1835	L1	W5	W6	L2	D3	2.5
5	Skovron, James J.	1821	L3	L4	L1	W6	D2	1.5
6	Fusselman, Stephen	1601	L2	L3	L4	L5	L1	0.0

Standings John Barto Memorial 2003

#	Name	Rtng	Rd 1	Rd 2	Rd 3	Rd 4	Rd 5	Tot
1	Hongisto, Eric	1600	W10	W9	W6	W2	W3	5.0
2	Donovan, Conrad K.	1391	D3	W4	W8	L1	W6	3.5
3	McCourt, Daniel J.	1705	D2	D11	W9	W7	L1	3.0
4	Olmsted, Spencer	1658	D11	L2	W5	D6	W7	3.0
5	Mammadov, Emil	unr.	L7	W12	L4	W8	W10	3.0
6	McBroom, William	1530	W12	W7	L1	D4	L2	2.5
7	Furdell, William J.	1430	W5	L6	W11	L3	L4	2.0
8	Pallares, Henry R.	1676	L9	W10	L2	L5	W11	2.0
9	Lundby, Kirk O.	1352	W8	L1	L3	L10	W12	2.0
10	Tamang, Stephen	1222	L1	L8	W12	W9	L5	2.0
11	Douglas, Nick J.	1284	D4	D3	L7	W12	L8	2.0
12	Newhouse, Ryan	1200	L6	L5	L10	L11	L9	0.0

Standings John Barto Memorial 2003 G/15 Quick-rated

#	Name	Rtng	Rd 1	Rd 2	Rd 3	Rd 4	Rd 5	Tot
1	Olmsted, Spencer	1616	W10	W5	L3	W7	W2	4.0
2	Hongisto, Eric	1840	W11	W9	D7	W3	L1	3.5
3	Pallares, Henry R.	1676	L9	W10	W1	L2	W6	3.0
4	Lundby, Kirk O.	1477	W8	L7	L6	W5	W9	3.0
5	Panse, Sachit P.	1205	B--	L1	W11	L4	W7	3.0
6	Douglas, Nick J.	1250	L7	B--	W4	W9	L3	3.0
7	McCourt, Daniel J.	1617	W6	W4	D2	L1	L5	2.5
8	McBroom, William H.	1768	L4	D11	L9	W10	B--	2.5
9	Tamang, Stephen	1279	W3	L2	W8	L6	L4	2.0
10	Newhouse, Ryan W.	unr.	L1	L3	B--	L8	W11	2.0
11	Mammadov, Emil	1517	L2	D8	L5	B--	L10	1.5

The Well-Equipped Chess Traveler

Looking to do some chess travel this year and maybe go for some of those Grand Prix points that are just hanging out there along the road waiting for your hand to pluck them in?? Good plan!

Of course, travel is easier if expenses are lower and staying at a pal's house is a good way to save quite a few bucks.

Here's a few pointers that can help you lighten the load on the host family.... especially if there are several visitors at one time.

Bring your sleeping bag, pad, pillow and towel. You'll be comfy enough and the host's laundry chores will be fewer.

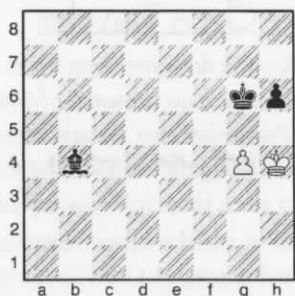
Remember to throw in a toothbrush (and t-paste), shampoo, and hairbrush.

Bring enough cash and buy the host a breakfast or two. Don't forget spare clothing and a phone card to keep 'em posted back home. Chess clock, board & pieces, favorite pencil, USCF card and MCA card. Collect city maps when on the road and note the good eateries and pubs. Leave all chess books at home--- and have fun!!



□ D. Duke,1835
 ■ G. Nowak,2134
 MT Closed Rd 1 English

1.c4 e5 2.Nc3 Nc6 3.Nf3 g6 4.g3 Bg7 5.Bg2 d6 6.0-0 Be6 7.d3 h6 8.Rb1 Nge7 9.b4 Qd7 10.b5 Nd8 11.Bd2 0-0 12.Qc1 Kh7 13.Qc2 c6 14.bxc6 bxc6 15.Rb3 Bh3 16.Rfb1 Bxg2 17.Kxg2 Rc8 18.Rb8 Ne6 19.R1b7 Rc7 20.Qb1 Rxb8 21.Rxb8 f5 22.a4! (Nowak) d5 23.cxd5 cxd5 24.Nb5 e4 25.Ne1 Rb7 26.Rxb7 Qxb7 27.Qb4 a6 28.Nd6 Qxb4 29.Bxb4 Nc6 30.Ba3 Ned4 31.e3 Ne2 32.dxe4 dxe4 33.Nb7 Nc3 34.a5 Nb5 35.Nc2 Bc3 36.Nc5 Nc7 37.Nb7 Nxa5 38.Nc5 Nc6 39.Kf1 Kg8 40.Ke2 Kf7 41.f3 exf3+ 42.Kxf3 Kf6 43.e4 Ne5+ 44.Ke2 Nb5 45.exf5? Nxa3 46.Nxa3 Bb4 47.Nxa6 Bxa3 48.fxg6 Bd6! 49.Ke3 Ng4+ 50.Ke4 Nxh2 51.g7 Kxg7 52.Kf5 Nf3 53.Kg4 Nd4 54.Kh5 Ne6 55.g4 Nf4+ 56.Kh4 Kg6 57.Kg3 Nd5+ 58.Kh4 Nb4? (Black will need this piece to force a win) 59.Nxb4 Bxb4 Diagram



White resigns not seeing that Black's dark-squared bishop and rook pawn are not sufficient to win
 0-1

□ JC Kuba,1889
 ■ G. Nowak,2134
 MT Closed Rd 2 Old Indian Defense

This defense is a long-time favorite of Nowak. Without the Queens, the outcome rests on endurance and unblinking alertness. White drops a pawn early, defends well, regains the pawn, and then, inexplicably, drops the queen pawn. 1.d4 Nf6 2.c4 d6 3.Nc3 e5 4.dxe5 dxe5 5.Qxd8+ Kxd8 6.Bg5 c6 7.Nf3 Nbd7 8.0-0-0 Kc7 9.Bxf6 gxf6 10.e3 f5?! 11.g3 h6 12.Bh3 e4 13.Nh4 Ne5 14.Kc2 Ng4 15.Rd2 h5 16.Rhd1 Be6 17.b3 Be7 18.Bxg4 hxg4 19.Ne2 Rad8 20.Ng2? Rxd2+ 21.Rxd2 Rxh2 22.Nef4 Bb4 23.Rd1 Bd6 24.Rd2 a5 25.a4 Bd7 26.Kb2 Rh1 27.Ne2 Bb4 28.Nc3 Be6 29.Nf4



Rh2 30.Kc2 Bd6 31.Nd1 Rh1 32.Ne2 Rf1 33.Nd4 Rh1 34.Nc3 Bf8 35.Nce2 Bb4 36.Rd1 Rh2 37.Rf1 Bd6 38.Kd1 Be5 39.Nf4 Bxd4 40.exd4 e3! 41.Ke2 exf2 42.Rxf2 Rh8 43.Kd3 Rh1 44.Re2 Rf1 45.Nxe6+ fxe6 46.Rxe6 Rf3+ 47.Re3 Rf2 48.Re7+ Kd6 49.Re3 Rg2 50.Kc3 Rf2 51.Kd3 Rf1 52.Re2 Rg1 53.Re3 Rd1+ 54.Kc2 Rxd4 55.Kc3 Rd1 56.c5+ scoresheets end here
 0-1

□ G. Nowak,2134
 ■ J. Skovron,1821
 MT Closed Rd 3 Reti

1.g3 d5 2.Nf3 c5 3.c4 d4 4.b4 e6 5.Bb2 Nf6 6.Na3 Na6 7.Nc2 b6 8.Bg2 Bb7 9.0-0 Bd6 10.bxc5 bxc5 11.d3 0-0 12.e3 e5 13.Nh4 Bxg2 14.Kxg2 Qd7 15.Rb1 Nc7 16.Qf3 Rfb8 Diagram Prudent would be Rab8 removing the rook from the h1-a8 diagonal



17.Nf5 Bf8 18.Na3 Rb6 19.Nb5 Qc8 20.Nxc7 Rab8 21.Nb5 a6 22.a4 g6 23.Nh4 axb5 24.axb5 Nh5 25.exd4 cxd4 26.Rfe1 Qc7 27.Qe4 Re6 28.Nf3 Bb4 29.Rec1 Be7 30.Ra1 Nf6 31.Qe2 Qb7 32.Kg1 Nd7 33.Nd2 Bg5 34.Ba3 f5 35.Re1 Bxd2 36.Qxd2 Rbe8 37.f4 Qf3 38.Rf1 Qh5 39.Qd1 Qh3 40.Ra2 Nf6 41.Qf3 e4 42.Qg2 Qh6 43.Re2 Qg7 44.Rfe1 Qa7 45.Bb2 e3 46.h3 h5 47.Ra1 Qd7 48.Ra8 Rd6 49.Ba3 Rb6 50.Rxe8+ Nxe8 51.Bc5 Rb7 52.Ra2 Rc7 53.Bb4 Ng7 54.Qd5+ Qxd5 55.cxd5 Rc1+ 56.Kg2 Ne8 57.b6 Rb1 58.Bc5 Nf6 59.Bxd4 Nxd5 60.Re2 Nxb6 61.Bxb6 Rxb6 62.Rxe3 Kf7 63.Kf3 Rd6 64.Ke2 Rd4 65.Rf3 Kf6 66.Ke3 Ra4 67.Rf2 g5 68.fxg5+ Kxg5 69.Rc2 Ra1 70.Rc4 Rg1 71.Kf2 Rd1 72.Rd4 h4 73.gxh4+ Kf6 74.Rd8 Rd2+ 75.Kf3 Rh2 76.Kg3 Rd2 77.h5 Kg5 78.Rd6 Rd1 79.h6 Black resigns
 1-0

□ H. Beyenal,1741
 ■ JC Kuba,1889
 MT Closed Rd 3 Sicilian Najdorf

1.e4 c5 2.Nf3 d6 3.d4 cxd4 4.Nxd4 Nf6 5.Nc3 a6 6.Bc4 e6 7.0-0 Be7 8.Bg5 b5 9.Bd3 Bb7 10.Qe2 b4 11.Nd1 Nbd7 12.f3 0-0 13.Bc4 Nc5 14.Nf2 d5 15.exd5 Nxd5 16.Bxe7 Qxe7 17.Rfe1 Qf6 18.Rad1 Rac8 19.Bxd5 Bxd5 20.Ne4 Nxe4 21.fxe4 Bc4 22.Qg4 Rc5 23.b3 Bb5 24.Nxb5 axb5 25.e5 Rxe5 26.Rxe5 Qxe5 27.Qxb4 Ra8 28.c4 bxc4 29.Qxc4 h6 30.a4 Qe3+ 31.Kf1 Qe5 Diagram



32.Re1? Qxh2 33.Qe4 Rd8 34.a5 Rd2 35.Qa8+ Kh7 36.Qe4+ f5 Black goes on to win
 0-1

□ JC Kuba,1889
 ■ D. Duke,1835
 MT Closed Rd 4 Sicilian

1.e4 c5 2.c3 e5 3.Bc4 Nc6 4.Nf3 Qc7 5.Na3 Be7 6.0-0 Nf6 7.Re1 a6 8.d4 d6 9.Bg5 0-0 10.h3 Bd7 11.Bd5 cxd4 12.cxd4 Nxd4 13.Nxd4 exd4 14.Qxd4 Nxd5 15.Qxd5 Be6 16.Qd2 b5 17.Rac1 Qb7 18.Bxe7 Qxe7 19.b3 d5? 20.exd5 Rfd8 21.Nc2 Qd7 22.Ne3 Bxd5 23.Nxd5 Qxd5 Diagram



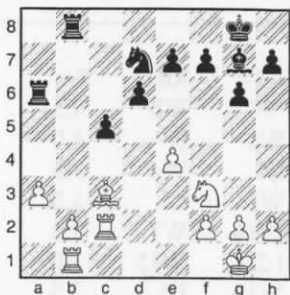
24.Re8+ Black resigns
 1-0

□ S. Olmsted,1658

■ C. Donovan,1391

Barto G/45 Rd 4 Benko Gambit

1.d4 Nf6 2.c4 c5 3.d5 b5 4.cxb5 a6
5.e3 d6 6.bxa6 Bxa6 7.Bxa6 Rxa6
8.Qd3 Qb6 9.Nf3 g6 10.Nbd2 Bg7
11.Nc4 Qb7 12.Bd2 Qxd5 13.Qxd5
Nxd5 14.a3 0-0 15.0-0 Nd7 16.Rfc1
N7b6 17.Rab1 Nxc4 18.Rxc4 Rb8
19.e4 Nb6 20.Rc2 Nd7 21.Bc3?
Diagram



Rxa3 22.Bxg7 Kxg7 23.Nd2 Ra7
24.b3 Rba8 25.f3 Ra1 26.Rcb2 Ne5
27.Rxa1 Rxa1+ 28.Rb1 Rxb1+
29.Nxb1 Nc6 30.Kf2 Kf6 31.Ke3 g5
32.g3 h6 33.h3 Ke6 34.Nd2 f5
35.Nc4 Nd4 36.Nd2 fxe4 37.Kxe4 d5+
38.Kd3 Ke5 39.Ke3 Kf5 Black goes on
to win
0-1

□ C. Donovan,1391

■ E. Hongisto,1600 (est)

Barto G/45 Queen's Gambit

1.d4 Nf6 2.c4 c5 3.dxc5?! Diagram



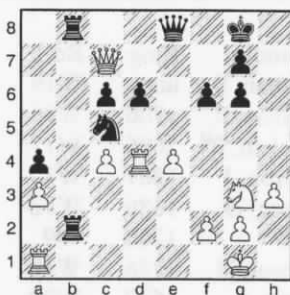
Na6 4.Nc3 Nxc5 5.Bg5 Qb6 6.Bxf6
gxf6 7.Qc2 d6 8.e3 f5 9.Nge2 Bg7
10.g3 Bd7 11.Bg2 Bc6 12.0-0 Bxg2
13.Kxg2 Qc6+ 14.Kg1 Qf3 15.Nf4 e6
16.Rac1 a6 17.Qd1 Qxd1 18.Rfxd1
Ke7 19.Nd3 Rhd8 20.Kf1 h5 21.h4
Nd7 22.Nf4 Nf6 23.Rd3 Bh6 24.Nfe2
Rac8 25.b3 Ng4 26.Rcd1 Rc7 27.Rd4
3g7 28.R4d2 b6 29.Rc2 b5 30.cxb5
axb5 31.b4 Rdc8 32.Rdc1 Kd7 33.a3
Rc4 black won in the ending
0-1

□ B. McBroom,1530

■ S. Olmsted,1658

Barto G/45 Ruy Lopez Exch.

1.e4 e5 2.Nf3 Nc6 3.Bb5 d6 4.Bxc6+
bxc6 5.0-0 Nf6 6.d3 Bg4 7.Bg5 Rb8
8.b3 Be7 9.Nbd2 0-0 10.h3 Bh5
11.c3 Nd7 12.Bxe7 Qxe7 13.Re1 f6
14.Nf1 a5 15.Ng3 Bg6 16.Nh4 Qf7
17.Nxg6 hxg6 18.a3 Rxb3 19.c4 a4
20.Qd2 Rfb8 21.Qa5 Nc5 22.Red1
Qe8 23.d4 exd4 24.Rxd4 Rb2
25.Qxc7? Diagram



Ne6 26.Qxd6 Rd8 27.Qxe6+ Qxe6
28.Rxd8+ Kf7 29.Rad1 Ke7 30.c5
Rb7 31.R8d6 Qb3 32.Ne2 Rc7 33.Nf4
Kf7 34.R1d3 Qb1+ 35.Kh2 Qb5
36.Ne6 Draw agreed
1/2-1/2

□ B. McBroom,1530

■ C. Donovan,1391

Barto G/45 Rd 5 Torre

1.d4 0 Nf6 6 2.Nf3 g6 3.Bg5 Bg7
4.e3 0-0 5.Bd3 d6 6.0-0 Nbd7
7.Nbd2 b6 8.Re1 Bb7 9.e4 e5 10.c3
Re8 11.Nc4 Qc8 12.d5 Nc5 13.Bc2
Ba6 14.Ne3 Ncxe4 15.Bxf6 Nxf6
16.Ng5 Nd7 17.Qf3 Rf8 18.Qh3 Nf6
19.Qf3 Nh5 20.Ba4 Qd8 21.Ne4 f5
22.Nd2 Nf6 23.Bc6 Rb8 Diagram



24.Nc2 Bb7 25.Nb4 a5 26.Nc2 Bxc6
27.dxc6 Qe8 28.Nd4 Qf7 29.Nb5 Ra8
30.a4 Rfc8 31.c4 e4 32.Qe2 Rd8
33.Rad1 Bf8 34.Nb3 Ng4 35.N3d4
Ne5 36.b3 d5 37.cxd5 Rxd5 38.Rd2?
Bb4 39.Rc2 Bxe1 40.Qxe1 Rad8
41.Qe3 Ng4 42.Qf4? Rxd4 43.Nxd4

Rxd4

Black's material brings home the win

0-1

□ E. Hongisto,1600 (est)

■ B. McBroom,1530

Barto G/45 Rd 3 Caro Kahn

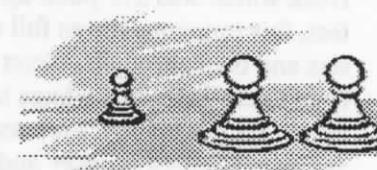
1.e4 c6 2.d4 d5 3.Nc3 dxe4 4.Nxe4
Bf5 5.Ng3 Bg6 6.Nf3 h6 7.h4 Nd7
8.h5 Bh7 9.Bd3 Bxd3 10.Qxd3 Ngf6
11.Bd2 Qb6 12.0-0-0 0-0-0 13.Ne4
Nxe4 14.Qxe4 Kb8 15.Qf4+ Ka8
16.Qxf7 Nf6 17.Rh4 Qa6 18.Qb3 Rd5
19.c4 Rxh5 20.Rxh5 Nxh5 21.Ne5 g5
22.Ng6 Rg8 23.Nxf8 Rxf8 24.Rh1 Nf6
25.Rxh6 Ng4 26.Rg6 Nxf2 27.Bxg5
Qb6 28.Qxb6 axb6 29.Bxe7 Rf7
30.Rg8+ Ka7 31.Bh4 Nd3+ 32.Kc2
Nb4+ 33.Kb3 Na6 34.Rg6 Rf4 35.Bf6
Nb8 36.Rg8? Diagram



Rxf6 37.g4 Nd7 38.g5 Rf3+ 39.Kc2
Rg3 40.Rd8 Nb8 41.Rg8 Nd7 42.Rd8
Nb8 43.Rg8 Rg4 44.Kd3 Rg3+
45.Kc2 Na6 46.a3 Nc7 47.g6 Ne6
48.d5 cxd5 49.cxd5 Diagram

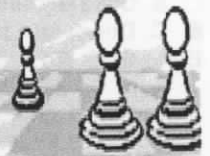


Nf4? 50.d6 Rg5 51.d7 Rc5+ 52.Kb3
Ne6 53.d8Q Nxd8 54.Rxd8 Rg5
55.Rd6 Kb8 56.Rxb6 White holds on to
win
1/2-1/2





Chinook Chess



Great Falls Chess Club October 11-12 2003

New Names Atop Standings

The Chinook Open was a highly successful tournament. This year we had twenty participants which was a great turnout! All the participants were strong. In fact, our newest member, Sergiy Dzyuban, won the tournament. This was his first tournament in the United States. He is, a sixteen year old, foreign exchange student from the Ukraine and has obviously been training hard. Watch out everyone, this kid is good!

There were four prize divisions besides the first place. The Expert-A division was won by Ron Erickson with four points. Ron has been away from chess for a while working at the legislature. Ron, its great to see you back playing! The B division was won by Doug Hansen who had three and a half points. The C division had a three way tie for first place which included Robert Mitchell, Emil Mammadov, and Conrad Donovan. Each scored two and half points. They divided the class prize three ways. The D and below section was won by Freddie Jay with three points.

Freddie also went home with the biggest upset prize. In the fifth round, Freddie knocked off David Duke which was 573 point upset. In fact, this tournament was full of upsets and breakthroughs. Scott Hunt, from Great Falls, had a huge tournament! He got his first tournament win over Richard Stuckey and then beat Bill Furdell for a 508 point upset! Robert Mitchell had a strong

#	Name	Rtng	Chinook Open					Tot
			Rd 1	Rd 2	Rd 3	Rd 4	Rd 5	
1	Dzyuban, S	unr.	W19	D4	W7	W3	W8	4.5
2	Erickson, R	1706	W16	W15	D3	W6	H---	4.0
3	Hongisto, E	2096	W17	W5	D2	L1	W4	3.5
4	Skovron, J	1801	W10	D1	W6	W8	L3	3.5
5	Hansen, D	1686	W12	L3	H---	W16	W7	3.5
6	Jay, F	1262	W9	W11	L4	L2	W15	3.0
7	Beyenal, H	1756	W18	D8	L1	W13	L5	2.5
8	Martin, R	1617	W20	D7	W15	L4	L1	2.5
9	Olmsted, S	1644	L6	W14	D13	D10	D12	2.5
10	Donovan, C	1471	L4	W12	H---	D9	D11	2.5
11	Mitchell, R	1557	D14	L6	D16	W19	D10	2.5
12	Hunt, S	926	L5	L10	W20	W17	D9	2.5
13	Mmdov, E	1517	L15	W20	D9	L7	W18	2.5
14	Tamang, S	1262	D11	L9	W17	L15	X19	2.5
15	Duke, D	1835	W13	L2	L8	W14	L6	2.0
16	Doulas, N	1299	L2	W19	D11	L5	H---	2.0
17	Furdell, W	1434	L3	D18	L14	L12	W20	1.5
18	Lundby, K	1359	L7	D17	L19	W20	L13	1.5
19	Pallares, H	1676	L1	L16	W18	L11	F14	1.0
20	Stuckey, R	1164	L8	L13	L12	L18	L17	0.0

Upsets by Round

Rd 1....	Jay (1262) over Olmsted (1644)	382 points
Rd 2....	Doulas (1299) over Pallares (1676)	377 points
	Jay (1262) over Mitchell (1557)	295 points
Rd 3....	Martin (1617) over Duke (1835)	218 points
Rd 5....	Jay (1262) over Duke (1835)	573 points
(Only non-provisional ratings considered)		

performance as well. He knocked off Henry Pallares in the fourth round. This tournament was the king of all tournaments regarding upsets; there were at least eight different games with over a hundred point difference between competitors, and the lower player either won the game or pulled out a draw. This suggests that this tournament's participants played at an extremely high level. Another good indication of this is that the first place winner only had four and half points and the winner, of the tournament, was not decided until the fifth round.

The tournament drew a great crowd from all over the state. I would like to thank all of you who participated. This tournament was awesome, and it would not have happened if you folks had not been there. Thank You!!

Nick Doulas, Tournament Director

□ S. Tamang,1262
 ■ R. Mitchell,1557
 Chinook 2003 Rd1 English

1.c4 e5 2.g3 Nc6 3.Bg2 f5 4.Nc3 Nf6
 5.d3 Bb4 6.Bg5 0-0 7.Qb3? Nd4!
 8.Qd1 Ne6 9.Bxf6 Qxf6 10.a3 Bxc3+
 11.bxc3 e4 12.Qc2 exd3 13.Qxd3 Nc5
 14.Qd4 d6 15.Qxf6 Rxf6 16.Nf3 Be6
 17.Nd2 Raf8 18.f4 c6 19.Rb1 R6f7
 20.0-0 Na4 21.Rb3 Nb6 22.Rfb1 Bc8
 23.Re1 Re8 24.Kf2 Rfe7 25.Bf3 Be6
 26.Reb1 Bc8 27.Ra1 Na4 28.h4 Re3
 29.Rc1 Nc5 30.Rb2 Na4 31.Rcc2
 R3e7 32.Rb1 Nb6 33.Rcb2
 ½-½

□ F. Jay,1262
 ■ S. Olmsted,1644
 Chinook 2003 Rd 1 Bird's Opening

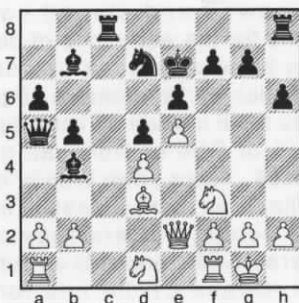
1.f4 Nf6 2.Nf3 b6 3.d4 e6 4.c4 Bb7
 5.Nc3 Bb4 6.Qc2 c5 7.dxc5 Bxc5 8.h3
 0-0 9.e4 d6 10.Bd3 g6 11.Bd2 Nc6
 12.0-0-0 Nb4 13.Qb1 Nxd3+ 14.Qxd3
 Bb4 15.e5 Bxc3 16.Bxc3 Ne4 17.exd6
 Nxc3 18.Qxc3 Rc8 19.b3 Re8?? 20.d7
 Qe7 21.dxc8Q Rxc8 22.Rd2 Bxf3
 23.gxf3 Qh4 24.Rhd1 Qxf4 25.Kb2
 Qg5 26.Rd7 e5 27.Rxa7 Rd8
 28.Rxd8+ Qxd8 29.Qxe5 Qd2+ 30.Ka3
 Qc1+ 31.Ka4
 1-0

□ H. Beyenal,1756
 ■ B. Martin,1617
 Chinook 2003 Rd 2 Grunfeld

1.d4 Nf6 2.c4 g6 3.Nc3 d5 4.cxd5
 Nxd5 5.e4 Nxc3 6.bxc3 Bg7 7.Bc4
 0-0 8.Ne2 c5 9.Be3 cxd4 10.cxd4
 Nc6 11.0-0 Qa5 12.Rb1 Rd8 13.Qb3
 e6 14.d5 exd5 15.Bxd5 Qc7 16.Rbc1
 Qe7 17.f3 Ne5 18.Rfd1 Be6 19.Qxb7
 Qxb7 20.Bxb7 Rab8 21.Rxd8+ Rxd8
 22.Bxa7 Bxa2 23.Rc8 Rxc8 24.Bxc8
 Bc4 25.Nf4 Nc6 26.Bc5 Bd4+ 27.Bxd4
 Nxd4 28.Kf2 Kg7 29.Ke3 Nb5 30.g4
 Nd6 31.Bd7 Bb5 32.Bxb5 Nxb5 33.h4
 Nc7 34.Nd5 Ne6 35.Nf4 Nd8 36.Nd3
 Ne6 37.Nf4 Nd8 38.Ne2 Ne6 39.Nd4
 Nd8 40.e5 h6 41.Ke4 Kf8 42.f4 Ke7
 43.f5 Nb7 44.h5 g5 45.f6+ Kd7 46.Nf5
 Ke6 47.Nd4+ Kd7 48.Nf5 Ke6 49.Nxh6
 Nc5+ 50.Kd4 Nd7 51.Ng8 Nxe5 52.h6
 Ng6 53.Kc5 Nf8 54.Kd4 Nh7 55.Ke4
 Nf8

□ S. Dzyuban, unrated
 ■ J. Skovron, 1801
 Chinook 2003 Rd2 Queen's Gambit

Skating on thin ice, Black is compelled to part with the lady and a bishop for two rooks. For his part, White finds the defense to be a tough nut to crack. In the end, Black is down material and has a terrible bishop to boot while White's queen and knight have become squashed into house arrest on h7 and h6. 1.d4 d5 2.c4 c6 3.Nc3 Nf6 4.Nf3 e6 5.Bg5 Nbd7 6.Qc2 Qa5 7.cxd5 cxd5 8.e3 Ne4 9.Bd3 Nxc3 10.Nxc5 h6 11.Nf3 a6 12.0-0 Bb4 13.Nd1 b5 14.e4 Bb7 15.e5 Rc8 16.Qe2 Ke7!
 Diagram



17.a3 Kd8 18.axb4 Qxa1 19.Nc3
 Qxf1+ 20.Qxf1 Re8 21.Nd2 Nb8
 22.Nb3 Nc6 23.Na2 Re7 24.f4 Rcc7
 25.Qe1 Ke8 26.Nac1 Bc8 27.Kf2 Kf8
 28.Ke3 f5 29.Nc5 Nd8 30.Bb1 g5
 31.h3 Rg7 32.fgx5 hxg5 33.N1d3 Nc6
 34.Nc1 g4 35.Ne2 gxh3 36.gxh3 Rg2
 37.Kf3 Rcg7 38.Nd3 R2g6 39.Qh4
 Ne7 40.Ndf4 Rg5 41.Qh8+ Ng8
 42.Nh5 R7g6 43.Nf6 Rh6 44.Nh7+
 Ke7 Diagram



½-½

□ D. Duke, 1835
 ■ R. Erickson, 1706
 Chinook 2003 Rd2 English

1.c4 e5 2.Nc3 g6 3.Nf3 Bg7 4.g3 d6
 5.Bg2 f5 6.d4 e4 7.Ng5 Nc6 8.d5

Ne5 9.Qc2 Nf6 10.b3 h6 11.Nh3 g5
 12.Bb2 Nfg4 13.0-0-0 0-0 14.Qd2 a5
 15.Nb5 Qe7 16.Nd4 a4 17.f3 axb3
 18.axb3 Nf6 19.Nf2? Nxc4! Diagram



20.bxc4 e3 21.Qd3 exf2 22.Rhf1 Nd7
 23.Kb1 Nc5 24.Qc2 Bd7 25.Nb5
 Bxb2 26.Qxb2 Na4 27.Qc2 Qe5
 28.Rd3 Bxb5 29.cxb5 Nc5 30.Rc3
 Qxd5 31.Rxf2 Ra5 32.f4 Rxb5+
 33.Kc1 Qe6 34.Kd1 Ra8 35.Qd2
 Rb1+ 36.Rc1 Raa1 37.Rxb1 Rxb1+
 38.Kc2 Qb3#
 0-1

□ R. Mitchell, 1557
 ■ F. Jay, 1262
 Chinook 2003 Rd2 Queen Pawn

The Freddie Jay's tactics keep the fires stoked and the 'Upset Express' picks up more steam. 1.d4 d5 2.e4 dxe4 3.Nc3 g6 4.Nxe4 Bg7 5.c3 Nd7 6.Nf3 Ngf6 7.Bd3 Rb8 8.Bg5 b5 9.Qd2 Bb7 10.Bxf6 exf6 11.0-0 0-0 12.Rfe1 f5 13.Ng3 Bxf3 14.gxf3 Qh4 15.Re2 Bh6 16.Qc2 Bf4 17.Rae1 Rb6 18.Re7 Nf6 19.c4 g5 20.Bxf5 bxc4 21.Kg2 Nd5 22.R7e4 Rfb8 23.R1e2 Rh6 24.Bxh7+ Kf8 25.Kf1 Qxh2 26.Bf5 Bxg3!
 Diagram



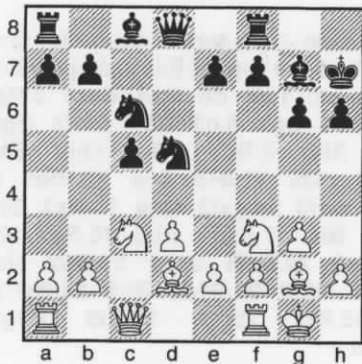
27.Ke1 Bf4 28.Kd1 Qh1+ 29.Re1
 Qxf3+ 30.R4e2 Rh2 31.Rf1 c3 32.b3
 Re8 33.Be4 Qh3 34.Rfe1 Bd2
 35.Rxd2 cxd2 36.Qxd2 Nc3+ 37.Kc1
 Nxe4 38.Qc2 Rxf2 39.Qc6 Rxa2
 0-1

□ N. Doulas, 1299
 ■ H. Pallares, 1676
 Chinook Open Rd 2 Barcza

1.Nf3 c5 2.g3 Nc6 3.Bg2 d5 4.0-0 e5
 5.d3 h6 6.Nbd2 Bd6 7.Re1 f5 8.e4
 dxe4 9.dxe4 f4 10.Nc4 Bc7 11.Bd2
 Be6 12.Qe2 Nge7 13.Rad1 Ng6
 14.Bxf4 Qe7 15.Ncxe5 Ncxe5 16.Nxe5
 Nxe5 17.Qb5+ Kf7 18.Bxe5 Bxe5 19.f4
 Bd4+ 20.Kh1 Rhd8 21.f5 Bd7 22.Qc4+
 Kf8 23.c3 b5 24.Qe2 Be5 25.Bh3 Kg8
 26.Rd2 Bc6 27.Rxd8+ Rxd8 28.Rf1
 Qc7 29.Qg4 Rd2 30.f6 Qf7 31.Qc8+
 Kh7 32.fgx7 Bxe4+ 33.Kg1 Qxg7
 34.Bf5+ Bxf5 35.Qxf5+ Kh8 36.Qc8+
 Kh7 37.Qf5+ Kg8 38.Qc8+ Kh7
 39.Qf5+ Qg6 40.Qxe5 Rxb2 41.Qe7+
 Kh8 42.Rf8+
 1-0

□ B. Martin, 1617
 ■ D. Duke, 1835
 Chinook 2003 Rd 3 English

1.Nf3 c5 2.c4 Nc6 3.g3 Nf6 4.Bg2
 g6 5.0-0 Bg7 6.Nc3 0-0 7.d3 d5
 8.cxd5 Nxd5 9.Bd2 h6 10.Qc1 Kh7?
 Diagram



11.Nxd5 Qxd5 12.Ng5+ Qxg5
 13.Bxg5 hxg5 14.Rb1 Nd4 15.Re1
 Bg4 16.f3 Be6 17.b3 Nf5 18.e3 Rfd8
 19.Qc2 Rd7 20.Rbd1 Rad8 21.Kh1 b5
 22.Qxc5 Rxd3 23.Rxd3 Rxd3 24.g4
 Nxe3 25.Qxb5 Nc2 26.Qxd3 Nxe1
 White goes on to win
 1-0

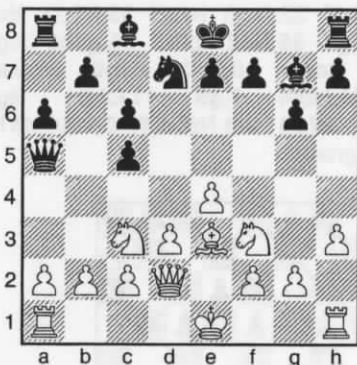
□ F. Jay, 1262
 ■ J. Skovron, 1801
 Chinook 2003 Rd 3 Birds Opening

1.f4 c6 2.Nf3 Nf6 3.d4 d6 4.c4 h6
 5.Qc2 Bg4 6.Nc3 e6 7.e4 Na6 8.Bd2
 Be7 9.0-0-0 d5 10.exd5 cxd5
 11.Qa4+ Qd7 12.Nb5 Bxf3 13.gxf3
 0-0 14.c5 Rfc8 15.Kb1 Nc7 16.Qb3

b6 17.Nxc7 Qxc7 18.cxb6 axb6
 19.Rc1 Qd6 20.Rxc8+ Rxc8 21.Bd3
 Nh5 22.f5 Bf6 23.fxe6 fxe6 24.Bb4
 Qc7 25.Bc3 Nf4 26.Bb5 Qf7 27.Bd2
 Bxd4 28.Bxf4 Qxf4 29.Bd7 Qf5+
 30.Ka1 Rc7 31.Bb5 Qc2 32.Qxc2
 Rxc2 33.Ba4 Rxb2
 0-1

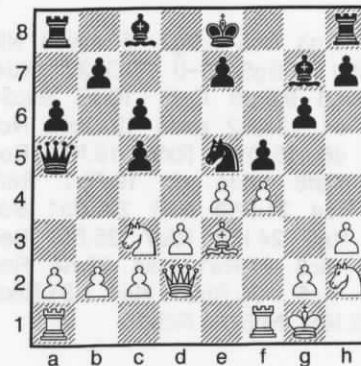
□ E. Hongisto, 2096
 ■ R. Erickson, 1706
 Chinook 2003 Rd 3 Sicilian Rossolimo

(Game notes by Eric Hongisto)
 1.e4 c5 2.Nf3 Nc6 3.Bb5 After this
 move I heard Ron murmur "Oh, that little
 guy" a6 Why? In this system, White
 intends to take on c6 all the way--
 doubled pawns and closed center
 compensate for the early loss of bishop
 pair. Now b6 is very weak and needs
 queen attention or a premature b5 push.
 Alternatives to a6 include g6 immediately,
 or e6 or d6 or Qb6 or Nd4...all good.
 4.Bxc6 dxc6 keeps pawn islands intact.
 Opens d file. Yah, sure it doesn't follow
 those old books, but are they good
 advice here? 5.d3 prevents an early c4
 for Black, Opens c1-h6 line for the
 thematic bishop/queen battery that is
 seen in the Pirc and other e4 lines. g6
 6.h3 prevents Bg4...Lufte for king, knight
 retreat to allow f4 Bg7 7.Nc3 Nf6
 8.Be3 Qa5 9.Qd2 Nd7 Diagram

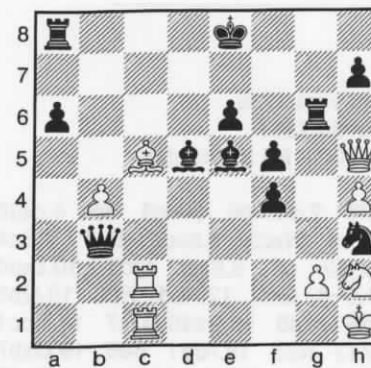


Fritz wants an exchange on h6, I
 suppose this is better. But playing a real
 person-I wanted more tension in the
 game. 10.0-0 Ne5 this is not the very
 best. e5 was stronger? Fritz (with king
 safety on) likes h6, but humans like to
 castle...h6 would be hangin'. However,
 White plays passive positionally and
 allows Black to play some tactical pawn
 advances. NxN was stronger than the
 text move. 11.Nh2 f5 White is getting a
 whole pawn advantage...here. But
 White's plan only allows an equalizing
 line. Best was Bh6 with good dark square

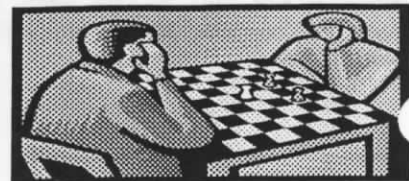
control, safe king and better long term
 position 12.f4 Diagram



Nf7 13.e5 Be6 14.Qf2 g5 Black said
 this was his strongest move of the game.
 Undoubtedly, and this is where Black
 gained the psychological edge...g5
 wasn't expected! 15.Bxc5 gxf4 16.b4
 Terrible. Going for a queen trap...good in
 blitz but not at g/90 Qc7 17.d4??
 The first blunder for White b6 18.d5
 cxd5 19.Nxd5 The 2nd blunder Bxd5
 A 4-pawn advantage for Black here
 20.Bd4 Qc6 21.c4 Qxc4 22.Bxb6 e6
 23.Bc5 Bxe5 24.Rac1 Qxa2 25.Rc2
 Qb3 26.Rfc1 Rg8 27.Qh4 Ng5
 28.Qh5+ Rg6 29.h4 Nh3+ 30.Kh1
 Diagram



and with Black approaching time trouble,
 I offered a rude draw. He accepted.
 White was toast! Ron, I owe you a half
 point!
 1/2-1/2

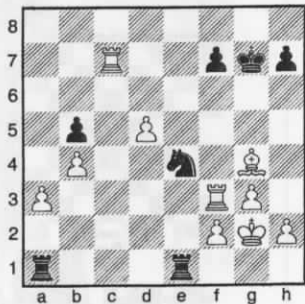


□ S. Dzyuban, unrated
 ■ E. Hongisto, 2096
 Chinook 2003 Rd 4 Benoni

1.d4 Nf6 2.c4 e6 3.Nc3 c5 4.d5 exd5
 5.cxd5 d6 6.e4 g6 7.Nf3 Bg7 8.h3
 0-0 9.Bf4 Nh5 10.Bh2 Re8 11.Nd2 f5
 12.Bd3 Qg5 13.0-0 Nf4 14.Bxf4 Qxf4
 15.g3 Qh6 16.h4 f4 17.Kg2 fxd3
 18.fxd3 Nd7 19.Nb5 Ne5 20.Nxd6
 Ng4 21.Rf3 Re7 22.N2c4 Ne5
 23.Nxe5 Bxe5 24.Qc1 Qxc1 25.Rxc1
 Bg4 26.Rff1 White goes on to win
 1-0

□ B. Furdell, 1434
 ■ S. Hunt, 926
 Chinook 2003 R4 English

1.c4 e5 2.g3 Nf6 3.Bg2 Nc6 4.a3 d5
 5.cxd5 Nxd5 6.Nc3 Be6 7.Nf3 Bc5
 8.0-0 Qd7 9.Nxd5 Bxd5 10.b4 Bd6
 11.e3 0-0 12.Bb2 a6 13.d4 Bxf3
 14.Qxf3 exd4 15.exd4 Be7 16.d5 Na7
 17.Rad1 Nb5 18.Rd3 Nd6 19.Rc1 b5
 20.Rc6 Nc4 21.Qe2 Rfe8 22.Qc2 Bf6
 23.Bxf6 Re1+ 24.Bf1 Qh3 25.Qe2
 Rxe2 26.Bxh3 Re1+ 27.Kg2 gxf6
 28.Rxf6 Ra1 29.Rdf3 Re8 30.Rxa6
 Ree1 31.Bf5 Nd6 32.Bg4 Kg7 33.Rc6
 Ne4 34.Rxc7? Diagram



Rg1+ 35.Kh3 Ng5+ 36.Kh4 Nxf3+
 37.Bxf3 Rxa3 38.Bg4 Rf1 39.d6 Rxf2
 40.d7 Rd3 41.Rc8 Rxh2+ 42.Kg5 h6+
 43.Kf4 Rhd2 44.Ke4 Rd4+ 45.Ke3
 Kg6 46.d8Q Rxd8 47.Bh3 Rxc8
 48.Bxc8 Rd8 49.Ba6 Rb8 50.Kd4 Rb6
 51.Kc5 Rxa6 52.Kxb5 Ra8 53.Kc6
 Kg5 54.b5 f5 55.b6 Kg4 56.b7 Rh8

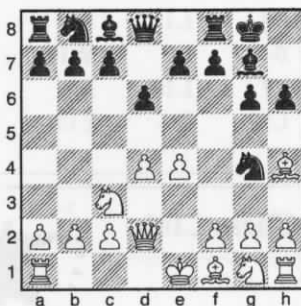
□ F. Jay, 1262
 ■ D. Duke, 1835
 Chinook 2003 Rd5 From's Gambit

1.f4 e5 2.fxe5 d6 3.exd6 Bxd6 4.Nf3
 g5 5.g3 g4 6.Nh4 Ne7 7.b3 Be5 8.c3
 Nbc6 9.Qc2 Ng6 10.Nxg6 hxg6 11.Bg2
 Bf5 12.e4 Bd7 13.Bb2 Qe7 14.Na3
 0-0-0 15.0-0-0 Rh5 16.d4 Bg7

17.Kb1 Rdh8 18.Bf1 f5 19.Ka1 fxe4
 20.Re1 Bf5 21.Nc4 Bf6 22.Ne3 Qh7
 23.Qf2 Rxh2 24.Rxh2 Qxh2 25.Bg2
 Ne7 26.a3 Qh5 27.Bc1 Bg7 28.Nc4
 Qh7 29.Ne3 Qg8 30.Ka2 Qe6 31.Rd1
 Qc6 32.Bb2 Ng8? 33.Nxf5 gxf5

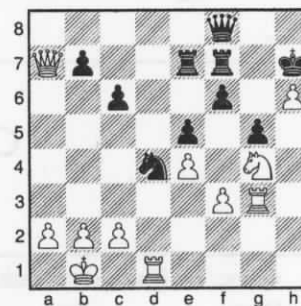
□ E. Hongisto, 2096
 ■ J. Skovron, 1801
 Chinook 2003 Rd5 Pirc

(Game notes by Eric Hongisto)
 1.e4 d6 2.d4 g6 3.Be3 Like a true
 poker player, White doesn't show Black
 his intentions...we could have played the
 Austrian (f4), Classical (Nc3 or Nf3),
 Samisch, Four Pawn or even the Short
 Attack (Bc4) variations--Be3 allows
 flexibility and puts the onus on Black to
 show his cards first. Will he play the
 Modern, Pirc or a King's Indian? As
 White, I played my first 8 moves under a
 minute. Psychology? Skovron was the
 opponent I most feared playing at the
 Chinook (my endgame was not ready for
 his skill level) Nf6 4.Nc3 Paradoxically,
 Fritz suggests d5 here! Bg7 5.Qd2 Ng4
 Ng4 may be "OK as a weapon, but its
 surprise value is its strength. To get the
 most out of this, Black has to have
 several follow up moves to make this
 system "fly"...As White, I was prepped for
 this--and had an inner smirk when Jim
 quickly threw this move in--the theme of
 Ng4 occurs most notably in pre-f3
 Sicilian Dragons and Be3 Najdorfs. As a
 tempo gainer in this system, nothing
 great comes of it. Black commits the sin
 of moving the same piece twice (going on
 three times) in the opening. White simply
 puts the B on a more dangerous
 attacking square 6.Bg5 h6 7.Bh4 0-0
 Diagram

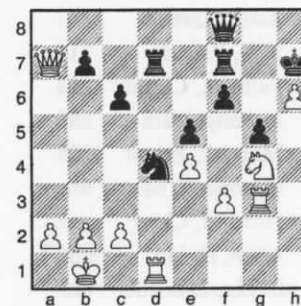


Why not go the full monty and play g5
 and e5 and get the most out of the tempo
 gains and the temporarily bad scope of
 the bishop?...Now White gets in f3 or h3
 (taste), 0-0-0 and g4--his full intention
 in this Pirc 150 opening. Tactically,
 White will get a clear advantage after the

text moves. After 0-0, I found only four
 =master level games with this =3-1...not
 a good sign for Black--best by test...{7...
 g5 8.Bg3 e5 9.dxe5 Nxe5 now Black
 has a great Knight for the trouble...!}
 8.f3 Nf6 9.0-0-0 c6 10.g4 Qc7 11.g5
 hxg5 12.Bxg5 e5 13.dxe5 dxe5 14.h4
 White has a one-pawn advantage here...
 the threats are coming up the h-file,
 Black is a clear development move
 behind. And has a crummy dark square
 bishop too boot. Nh5 15.Bh3 Bxh3
 16.Nxh3 f6 17.Bh6 Na6 18.Bxg7
 Qxg7 19.Nf2 Rf7 20.Ng4 Kh7 21.Qe3
 Re8 22.Rhg1 Ree7 23.Ne2 Nc7
 24.Ng3 Nxd3 25.Rxg3 Ne6 26.h5 g5
 27.h6 Moving into +- two pawn
 advantage territory Qf8 28.Qxa7 Nd4
 29.Kb1 Diagram



Jim senses a breakout for Black here,
 which is entirely possible--however a
 blunder allows White to clean up and go
 home. Fritz suggests f5 here with White
 still up a clear pawn with the monster on
 h6 Rd7?? Diagram



{29...f5 30.Nf2 Rd7 31.Qa5 b6 32.Qxb6
 Rb7 Fritz still likes White here by at least
 a pawn...I think Black has great chances
 here...super human moves required by
 White.} 30.c3 b6 31.Nxf6+ Rxf6
 32.Qxd7+ Rf7 33.Qg4 Nxf3 34.Rd7
 Rxd7 35.Qxd7+ Kxh6 36.Qe6+ Kh5
 37.Qg4+ Kg6 38.Rxf3 Black resigns.
 Jim is secretly plotting his revenge.
 1-0

Chinook 2003 Round 5

○ S. Hunt 926

● S. Olmsted 1644

Ruy Lopez ♣

Down a piece early on, White learns to spell relief...s-w-i-n-d-l-e

- 1. e4 e5 2. Nf3 Nc6 3. Bb5 d6 4. d3 Nf6 5. Bg5 Be7 6. O-O O-O 7. Re1 Bg4 8. Bxc6 bxc6 9. c3 a5 10. Nbd2 c5 11. h3 Bd7 12. d4 cxd4 13. cxd4 exd4 14. Nxd4 h6 15. Bh4 Nh7 16. Bxe7 Qxe7 17. Nf5 Qf6 18. Qg4 Kh8 19. e5?

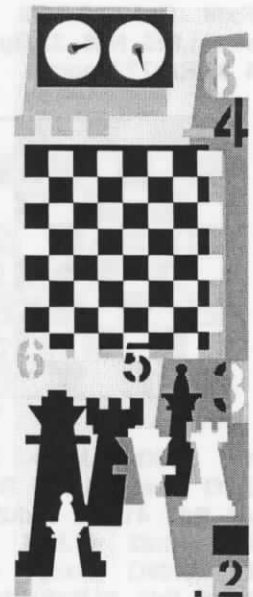
- Qxf5 20. Qxf5 Bxf5 21. exd6 cxd6 22. Rac1 Be6 23. a3 Nf6 24. b4 axb4 25. axb4 Rfb8 26. Rb1 Ra4 27. b5 Ra5 28. b6 Ra6 29. b7 Ra7 30. Rb6 Raxb7 31. Rxd6 Rb6 32. Rd4 Rc6 33. Nf3 Rc2 34. Red1 Rbc8 35. Kh2 Rxf2 36. Kh1 Re2 37. h4 Bb3 38. R1d3 Bc2 39. Rd8+ Re8 40. Rxe8+ Rxe8 41. Rd2 Rc8 42. Ne5 Kg8 43. Rf2 Bb3 44. Rf3 Bd5 45. Rf2 h5 46. Kh2 Ng4+ 47. Nxc4 hxc4 48. Kg3 Be6 49. h5 Kh7 50. Kh4 Kh6

51. g3 !? (something is brewing on the back burner) Rc5 52. Rf6+ {Diagram} gxf6?? stalemate ½:½



CHINOOK SCHOLASTIC STANDINGS

#	Name	Rtng	Rd 1	Rd 2	Rd 3	Rd 4	Rd 5	Tot	TBrk[S]
1	Phillips, Jeff	1425	W9	W6	W8	W2	W4	5.0	15
2	Minnick, Lucas	1035	W11	W5	W4	L1	W7	4.0	16
3	Tilly, Ethan	804	B---	L4	W11	W5	D8	3.5	10.5
4	Dower, Glen	999	W14	W3	L2	W8	L1	3.0	15
5	Drake, Gavin	929	W10	L2	W6	L3	W14	3.0	13
6	Pierson, Steve	867	W15	L1	L5	W13	W11	3.0	12
7	Astle, Carson	832	L8	W13	W14	W9	L2	3.0	11
8	Fish, Patrick	716	W7	W12	L1	L4	D3	2.5	15.5
9	Sullivan, Conner	718	L1	W15	W12	L7	D10	2.5	12.5
10	Lundby, Kara	689	L5	L11	W15	W14	D9	2.5	8.5
11	Marvick, Ethan	735	L2	W10	L3	W12	L6	2.0	14
12	Capozzoli, Matt	unr.	W13	L8	L9	L11	B---	2.0	8.5
13	Howard, Chris	unr.	L12	L7	B---	L6	W15	2.0	8
14	Allen, Dylan	661	L4	B---	L7	L10	L5	1.0	11.5
15	Drake, Danielle	unr.	L6	L9	L10	B---	L13	1.0	9.5



Electric City Checkmates Chess Club

Meetings:

Monday evenings 6:30-8:00pm

West Gate Mall

No entrance fees; refreshments served

Bring equipment if you have it

Info: 1-406-727-5968 email kirk123L@aol.com



Great Falls Chess Club

Meets Tuesdays

6:00-10:00pm

Room 203 Sullivan

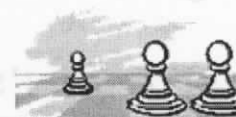
University of Great Falls

Contact: Nick Doulas

406-899-4664

doulas41@bresnan.net

CHINOOK SCHOLASTIC



Montana's first USCF-rated scholastic tournament in memory—maybe ever—came off a splashing success, October 11, at the University of Great Falls.

Held in conjunction with the Chinook Open, the scholastic section drew fifteen participants, including nine new USCF members.

Jeff Phillips, of Great Falls, nailed a perfect 5-0 for first place. Lucas Minnick, Havre, lost only to Phillips and finished second with a 4-1 mark.

Ethan Tilly, Helena, took third place with a 3.5 score.

A 4-way logjam at fourth-place left the directors in a bit of a "sticky wicket" for having neglected to properly familiarize themselves with the upgraded SwisSys 6.0 software. (This, in spite of software developer, Thad Suits', strong encouragement to do just that.)

The resulting miscalculation of the tiebreaks left one player without a trophy when he actually qualified in two separate

categories.

For the players involved, this has turned a potential near miss into a prize as it seemed the best solution was to make sure that each of the owners of a 3.0 score was rewarded with trophy. Glen Dower, Gavin Drake, and Steve Pierson will have 4th place trophies while Carson Astle was awarded the prize for Best Score Grades 3-6.

Thanks!! to all the participants (and their families!) for a big part in launching rated

scholastic chess in Montana. A word of great appreciation also for the University of Great Falls for providing a great playing space! A tip of the hat, as well, to the aforementioned Mr. Suits, for helping get the tournament moving in the early rounds. And many thanks to the Electric City Checkmates Chess Club and the Lundby family for boosting the tournament (and the attendance!) and for bringing the Gatorade. This event was truly a team effort!

Chinook Scholastic Round 4

○ Lucas Minnick, 1035

● Jeff Phillips, 1425

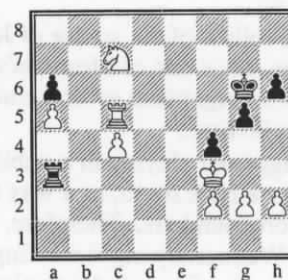
French Defense ♣

This hard-fought game decides between first and second places. Black commits the first big oversight, dropping a bishop on move 29. Nobody ever wins by resigning though, and Black plays on, making the most of his active rook and advanced pawns. Suddenly, with some big help from

the White majesty, Black casts a mating net and lands the point.

1. e4 e6 2. d4 d5 3. exd5 exd5 4. c4 Nf6 5. Nc3 Be6 6. Bd3 dxc4 7. Qa4+ Qd7 8. Qxd7+ Nbx7 9. Be2 Bb4 10. Nf3 Ne4 11. Bd2 Nxd2 12. Nxd2 Bxc3 13. bxc3 O-O 14. Bxc4 Rfe8 15. O-O Nb6 16. Bb3 Nd5 17. Bxd5 Bxd5 18. c4 Be6 19. Rab1 b6 20. a4 Bf5 21. Ra1 Rab8 22. Rfe1 Red8 23. Nf3 Re8 24. Re5 g6 25. Rae1 Rxe5 26. Rxe5 Bd3 27. Re7 Rc8 28. Ne5 f6 29. Nxd3 Rf8 30. Nf4 Rf7 31. Re8+ Kg7 32. Ne6+ Kh6 33. Rc8 c5 34. dxc5 Re7 35. Rc6 bxc5 36. Kf1 Rb7 37. Rxc5 Rb4 38. a5

g5 39. Rc7 a6 40. Rc6 Kg6 41. Ke2 Ra4 42. Rc5 Ra2+ 43. Ke3 f5 44. Nc7 f4+ 45. Kf3 Ra3+ (Diagram) 46. Kg4?? h5 **O-1**



Chinook Scholastic Round 3

○ Ethan Marvick, 735

● Ethan Tilly, 804

King's Gambit ♣

1. e4 e5 2. f4 f6 3. Bc4 d6 4. fxe5 dxe5 5. Nf3 Bc5 6. c3 Bg4 7. d4 exd4 8. cxd4 Bxd4 9. h3 Bxf3 10. gxf3 Nc6 11. Bb5 a6 12. Bxc6+ bxc6 13. Na3 Qd6 14. Nc4 Qg3+ 15. Kf1 Qf2# **O-1**

Chinook Scholastic Round 3

○ Gavin Drake, 929

● Steve Pierson, 867

Queen Pawn ♣

1. d4 Nf6 2. c3 Nc6 3. f3 d6 4. e4 h6 5. g3 a6 6. Bg2 e6 7. b3 Bd7 8. Bb2 Be7 9. Ne2 O-O 10. Nd2 Rc8 11. O-O a5 12. Re1 h5 13. Kh1 g5 14. h4 gxh4 15. gxh4 a4 16. Nc4 axb3 17. axb3 b5 18. Na3 b4 19. cxb4 Nxb4 20. Qd2 e5 21. Rg1 exd4 22. Qh6 Re8 23. Bh3+ Ng4 24. fxg4

Bxg4 25. Bxg4 Bxh4 26. Bc1 Bf2 27. Rg2 Nd3 28. Bxc8+ Bg3 29. Rxg3+ Qg5 30. Rxg5# **1-0**



Visit us on the web at www.montanachess.org

BOZEMAN'S UNIVERSITY CHESS CLUB OFF TO BEST YEAR YET



Montana Chess Association



Former MSU chess players probably wouldn't recognize the old UCC. Our involvement in recent recruiting events on campus has really paid off. We've attracted about 15 players per weekly meeting so far this fall, a 100% increase from a couple years ago!

MSU holds 3 orientation sessions every summer, along with Catapalooza (a 2-day extravaganza just before fall semester starts). Having a table at all these events gives us an opportunity to promote our club among incoming freshmen.

MSU's new Club Awareness Days, held this fall, gave us a chance to recruit other students, staff, and faculty. Participating in these events has made a big difference for our club, and we recommend others to recruit at every opportunity.

We also follow of the advice of John Thompson, once one of Montana's best players, who organized several clubs during his lifetime.

John suggested playing in a public site, rather than a back room, as a way to attract more members. Therefore, we hold our Wednesday night meetings in a big dining area of our student union, where many students come to study.

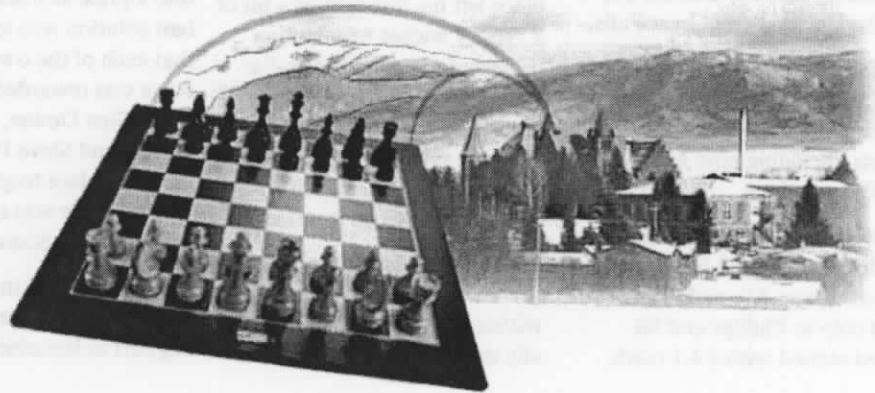
During the summer we meet at different coffee shops around town. Recently some of our officers have offered Friday night meetings in a downtown coffee house.

Our club uses a listserv to send a weekly email newsletter to our members, reminding them of our meetings and of MCA tournaments.

We also have a website, www.homepage.montana.edu/~chess, which gets updated occasionally.

We have a great group of officers this year, all active tournament players who rarely miss a club meeting: President - Conrad Donovan; Vice President - Spencer Olmsted; Secretary - Stephen Fusselman; Treasurer - Satchit Panse.

UNIVERSITY CHESS CLUB



Meeting Information

Wednesday at 7:30pm

SUB Cafeteria

Bring your board and your brain, and get ready to play!!!

2003-2004 Officers

President.....Conrad Donovan
Vice President...Spencer Olmsted
Secretary.....Stephen Fusselman
Treasurer.....Satchit Panse
Advisor.....Steve Scarff

Officers who are involved and willing to volunteer their time to promote chess are a valuable asset to any club.

We're also fortunate this year to have two active faculty members, both strong players: Haluk Beyenal has been organizing and directing some casual Saturday tournaments, and is working on a plan to offer chess-classes for youngsters; Eric Hongisto arrived this summer and has brought a welcome dose energy and enthusiasm to the club.

Although most of our members are MSU students, area residents are welcome at meetings. Players from as far away as Manhattan, West Yellowstone, Livingston, and Paradise Valley sometimes attend.

This fall we're having our first club championship tournament: A game/30 round robin, played at club meetings, Oct. 8 - Nov. 5.

Thirty-six kids played in our first ever K-12 scholastic tournament this past May. This event was so popular that we held another in September, and we'll likely have 2 or 3 every year. We see scholastic tournaments as a great way to promote local chess, and they've helped us make contacts with chess clubs and organizers in the local schools.

We're doing our part to support the MCA: The UCC donated playing sites for this year's Triple Header and Closed/Barto tournaments, and we're scheduled to host the Montana Open in spring of 2004.

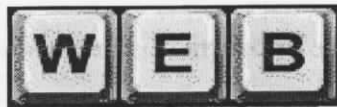


UNIVERSITY CHESS CLUB CHAMPIONSHIP

RATED G/30 10/08/03 BOZEMAN, MT



#	Name	Rating	Rd1	Rd2	Rd3	Rd4	Rd5	Rd6	Rd7	Rd8	Rd9	Total
1	Steve Scarff	1525	L9	W8	L7	W6	L5	L4	W3	L2	BYE	3
2	Satchit Panse	1203	L8	L7	F6	F5	L4	D3	BYE	W1	F9	1.5
3	Kyungmin Min	UNR	L7	L6	L5	L4	BYE	D2	L1	L9	D8	1.0
4	Halak Beyenal	1756	X6	W5	BYE	W3	W2	W1	D9	W8	W7	7.5
5	Eric Hongisto	2096	BYE	L4	W3	X2	W1	L9	D8	W7	X6	5.5
6	E. Mammadov	1508	F4	W3	X2	L1	L9	L8	L7	BYE	F5	2
7	S. Fusselman	1574	W3	W2	W1	L9	W8	BYE	W6	D5	L4	5
8	S. Olmsted	1644	W2	L1	L9	BYE	L7	W6	D5	L4	D3	3
9	C. Donovan	1471	W1	BYE	W8	W7	W6	W5	W4	W3	X2	7.5



www.homepage.montana.edu/~chess

Montana Action Championship

Steve Scarff won this pivotal game (and the Montana G/30 Championship) using his 'old reliable' Blackmar-Diemer Gambit.

Our club had 6 players in the 2003 Montana Open, 5 in the Triple Header, 4 in the Barto, 2 in the Closed, and 6 in the Chinook. So far this year UCC players have won all 3 Triple Header events, both Barto events, and the Chinook.

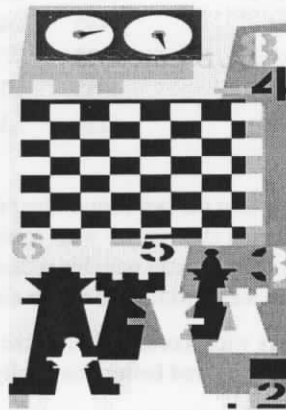
We've also gathered four 2nd place finishes in rated events starting with the 2003 Montana Open.

It's been a good year for our club so far!

The UCC will host the Yuletide Open (G/45 MT Grand Prix event) on December 6, and the Blizzard Open (G/25) on December 7. These will be followed by the Midwinter Open on January 31, and the Groundhog Open on February 1.

We may add another such weekend in March or April, if interest is sufficient and schedules allow. We hope to see you in Bozeman for some or all of these events.

Steve Scarff, UCC Advisor



○ S. SCARFF 1585
 ● H. BEYENAL 1767
 BLACKMAR-DIEMER GAMBIT
 ROUND 4 ♣

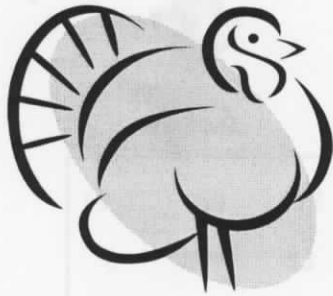


Position after 14...g1

1. d4 ♘f6 2. f3 d5 3. e4 dxe4 4. ♘c3 exf3 5. ♘xf3 ♙g4 (Teichmann Variation of the BDG) 6. h3 ♘xf3 7. ♗xf3 c6 8. ♙e3 e6 9. O-O-O (♙d3 is more popular) ♙b4 10. ♘e2 ♘bd7 11. g4 ♗a5 12. ♙b1 O-O-O 13. ♙g2 ♘d5 14. ♙g1 (diagram) ♗b6?! (Occupying the best square for the d7 Knight; 14..♗b5 is better) 15. ♙d3 (♗xf7 may have been better, but White saw no reason to open the f-file so soon) f6 16. ♙b3 ♗a5 17. ♙h2 ♙e1? (The Bishop seems poorly placed here, 17..♙he8 is stronger) 18. ♙a3 ♗b4?! (18..♗d2 was the logical follow-up to 17..♙e1) 19. ♙xa7 (19.c3 ♙xc3 20.♙b3 and White has a Bishop for two pawns) ♘7b6 20. ♗a3?! (safer is 20.a3) ♗d2 ?! (better now to exchange the Queens) 21. ♙xd5?! ♙xd5 (21.♙a8 Nxa8 22.♗xa8 + wins material) 22. ♗e7 ♙d7 (other moves lose) 23. ♗xe6 ♙f2 ?! (23..♙d8 gives Black better survival chances) As is often the case in Action Chess, the end of the game went unrecorded. 24. ♗b3 looks strong, but was it played? After exchanging material, White eventually queened a pawn, and delivered checkmate. 1-0

(Game notes—Steve Scarff)





Tournament notes from
director, Bill McBroom

The Turkey Open drew twenty-three players over November 15 and 16 in Missoula. It was a strong field that included four experts and three Class A.

Sergiy Dzyuban, one of three Bozeman players to compete, overcame a first-round loss to Bob Martin and went on to tie Greg Nowak (four points each) for an even share of the \$100 first-place and \$75 second-place money.

Unlike a number of previous tournaments, Greg had a strong and unyielding oppo-

nent in the last round—expert Matthew Campbell. Going into the last round Greg needed at least a draw to be in the money at all. He had draws in rounds 2 and 3—that in round 2 was an exciting cliff-hanger with John Julian of Spokane. Toward the end Greg had 23 minutes and John had a mere 23 seconds. John played magnificently with his remaining time and ended up making his last ten or more moves (alas, unrecorded, for those of us who might like to learn from him) with a single second remaining on his clock.

The third-place prize of \$50 was split among four players with scores of 3.5: Mike Jensen, John Julian, Lewis McClary, and Kirk Steinocher. Stephen Buck of Washington also had 3.5 points but he fared better financially by taking the Best Under 1800 class prize than by having a one-fifth share of the pooled class and place prizes.

Other prize winners were Steve Brendemihl, who captured the prize for Best Under 1600, and Steve Tamang, who won with the best score among players under 1400.

Patrick Kirlin knocked off Ron Erickson—a rating differential of 420 points—in the first round and held secure title to the biggest upset prize for the rest of the tournament

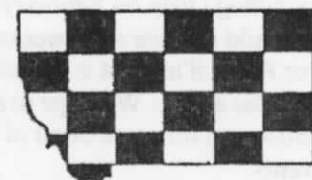
As always, it was a pleasure to see our good friends from the Spokane area.

2003 TURKEY OPEN STANDINGS

Directed by Bill McBroom

#	Name	Rtng	Rd 1	Rd 2	Rd 3	Rd 4	Rd 5	Tot
1	Nowak, Gregory W	2135	W17	D4	D3	W9	W8	4.0
2	Dzyuban, Sergiy	2122	L9	W20	W11	W15	W3	4.0
3	McClary, Lewis	2072	W16	W15	D1	W5	L2	3.5
4	Julian, John C	1922	W20	D1	D9	W12	D6	3.5
5	Buck, Stephen	1704	W13	D8	W10	L3	W15	3.5
6	Steinocher, Kirk	1854	W18	W21	H---	D8	D4	3.5
7	Jensen, J Michael	1907	H---	U---	W17	W19	W10	3.5
8	Campbell, Matthew	2084	W11	D5	W14	D6	L1	3.0
9	Martin, Robert	1617	W2	D10	D4	L1	D12	2.5
10	Hongisto, Eric	2096	W19	D9	L5	W14	L7	2.5
11	Brendemihl, Steve	1442	L8	W23	L2	D13	W19	2.5
12	Erickson, Ron	1706	L21	W18	W16	L4	D9	2.5
13	Tamang, Stephen	1231	L5	D19	D20	D11	W21	2.5
14	Weyland, Phillip M	1711	W22	H---	L8	L10	W16	2.5
15	McCourt, Daniel J	1708	W23	L3	W21	L2	L5	2.0
16	Newhouse, Ryan W	1148	L3	B---	L12	W23	L14	2.0
17	Pallares, Henry R	1676	L1	W22	L7	W21	U---	2.0
18	Weyland, Ron	1400	L6	L12	L19	W20	W22	2.0
19	Griffin, David B	1445	L10	D13	W18	L7	L11	1.5
20	Morton, Jerry	1445	L4	L2	D13	L18	B---	1.5
21	Kirlin, Patrick M.	1277	W12	L6	L15	L17	L13	1.0
22	Hay, John	1335	L14	L17	L23	B---	L18	1.0
23	Douglas, Nick J	1284	L15	L11	W22	L16	U---	1.0

Montana Chess News



Montana Chess Association

Joyce's January Thaw

Date:

Saturday—Sunday
January 17-18

Site: Salvation Army Gymnasium,
1905 Henderson, 4-5 blocks off Hwy
12 (West Euclid), Helena, MT

Format: 5 round, Swiss System

Time Control: Game/90

Registration: 10:15-10:45am

Rounds: Sat—11am, 2:30pm, 7pm
Sun—9am, and 12:30pm

Prizes: 1st...\$50 2nd...\$30

Awards to top two juniors and
Biggest Upset

Prizes increased if >\$300 in entries

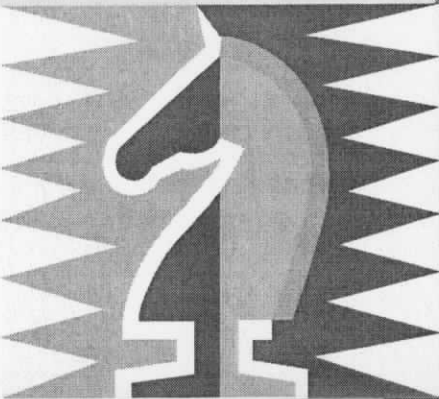
Entry: \$20 by Jan. 16, \$25 at site;
Juniors at 1/2 price

Entries and Info: Mel Drake, 5985
Scott Lane, Helena MT, 59620
Ph...406-475-3481

Director: Nick Doulas

doulas41@bresnan.net

(phone/email entries must be present
at registration)



Yuletide Open December 6

A Montana Chess Grand Prix Event

Location: Room 106 E, Strand Union Building, Montana State
University, Bozeman, MT

Format: 5 Round Swiss **Time Control:** G/45

Registration: 8:30-9am **Rounds:** 9:15, 11:00, 1:30, 3:15, 5pm

Entry Fee: \$15 received by 12/3, \$20 after.....Juniors at 1/2 price
Mail or PayPal, no phone entries

Entries and Info: Steve Scarff, steve@bridgeband.com, 406-586-4479
mail to: University Chess Club, SUB Box 23, Bozeman, MT 59717

Misc: NS, NC, Wheel chair access...Prizes: TBD...1/2 pt byes available before 9:15
Sponsored by University Chess Club



Blizzard Open December 7

Location: Same as Yuletide above

Format: 5 Round Swiss **Time Control:** G/25 USCF Quick-Rated

Registration: 9:30-9:55am Sun. **Rounds:** 10am, 11am, 1pm, 2pm, 3pm

Entry Fee: \$7.50 by 12/3, \$10 after....Juniors at 1/2 price
Mail or PayPal, no phone entries

Entries and Info: Same as Yuletide

Misc: NS, NC, Wheel chair access...Prizes: TBD...1/2 pt bye available before 10am
Sponsored by University Chess Club



Midwinter Open January 31

A Montana Chess Grand Prix Event

Location: Room 106 E, Strand Union Building, Montana State
University, Bozeman, MT

Format: 5 Round Swiss **Time Control:** G/45

Registration: 8:30-9am **Rounds:** 9:15, 11:00, 1:30, 3:15, 5pm

Entry Fee: \$15 received by 1/28/04, \$20 after.....Juniors at 1/2 price
Mail or PayPal, no phone entries

Entries and Info: Steve Scarff, steve@bridgeband.com, 406-586-4479
mail to: University Chess Club, SUB Box 23, Bozeman, MT 59717

Misc: NS, NC, Wheel chair access...Prizes: TBD...1/2 pt byes available before 9:15
Sponsored by University Chess Club



Groundhog Open February 1

Location: Same as Midwinter above

Format: 5 Round Swiss **Time Control:** G/25 USCF Quick-Rated

Registration: 9:30-9:55am Sun. **Rounds:** 10am, 11am, 1pm, 2pm, 3pm

Entry Fee: \$7.50 by 1/28/04, \$10 after....Juniors at 1/2 price
Mail or PayPal, no phone entries

Entries and Info: Same as Midwinter

Misc: NS, NC, Wheel chair access...Prizes: TBD...1/2 pt bye available before 10am
Sponsored by University Chess Club



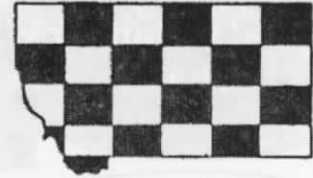
Dave Collyer Memorial

February 21-22
Spokane, Washington

USA Grand Prix
\$\$1000+ guaranteed

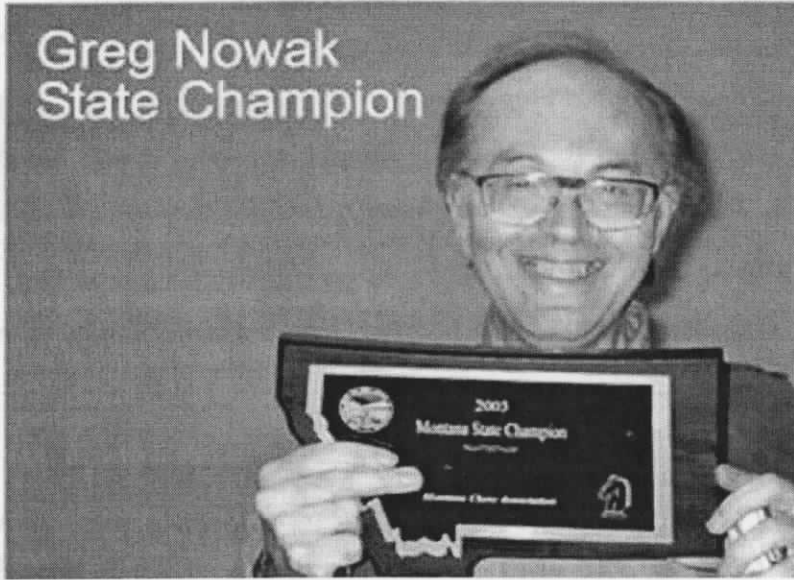
Montana Chess

News



Montana Chess Association

Greg Nowak
State Champion



INSIDE THIS ISSUE:

Grand Prix at the 1st turn	2
Closed and Barto games	3-5
Chinook Chess Great Falls	6-9
Chinook Scholastic	10-
University Chess Club Bozeman	12- 13
Turkey standings	14
Upcoming Events	15

Editor—Dan McCourt
dmcc@rmttnet.com

608 West Central
Missoula, MT 59801

Dave Collyer
Memorial