



# MONTANA CHESS NEWS

Volume 27, Issue 4 — November, 2002

Nowak & Johansson - State Champs  
*Fusselman wins Barto*  
Johansson takes first at Chinook  
Nowak & Johansson - Share Turkey  
Next Tourney - Blizzard in Bozeman

Greetings and salutations, chess fans

Dan McCourt - Pres.

The 2002-2003 chess year is underway and it looks like Montana chess players are going to have big slate of chess playing opportunities. While the details are not all worked out, it's a good bet that the Grand Prix circuit will closely resemble last year's schedule with at least two other weekends of chess tourneys sponsored by the Bozeman Chess Club. Somewhere in there, we want to fit in several scholastic tournaments.

Here in Missoula, my personal goal is to have two scholastic tournaments -one before Christmas and one sometime in the spring before the annual State youth championship. I think the Bozeman Chess Club is looking to put on some scholastic chess and there probably should be at least one youth

tournament in Helena during the winter months. The State Scholastic Championship has not been scheduled as of yet. April and May are the two months that I think of first but the calendar is open and suggestions are welcome. In addition, we have an offer of generous financial backing for a scholastic tournament from the Leonard Lundby family business. While no arrangements have been made as of yet, this event is most likely to take place during the winter months at a site in Helena or Great Falls.

Sooo---all you tournament organizers (including me) --it's time to get organized. It will be very helpful if the folks directing the more traditional events can give us some solid dates so those of us doing scholastic chess can work around those times.

Speaking of scheduling--the 2003 Mon-

tana Open will be in Billings--but when?? Bill McBroom has already checked out several locations as well as graduation dates for Montana high schools and Universities.

Here's the deal or at least part of the deal. The bylaws call for the Open to be held in May or June. Those same bylaws eliminate three weekends in May--Mother's Day, U of M and MSU graduation day, and Memorial Day. The first weekend of June is high school graduation for most of the State. That makes it tough for Seniors, families of Seniors, teachers, and school administrators to play chess that weekend. Now, just as we thought the second weekend of June would be the ticket, we find out that the 2003 National Open is scheduled for that week.

Maybe we should be taking another look at Memorial Day weekend. Better call or write your MCA officers and let them know how you stand on the scheduling of the Open.

Here are some other items you will want to consider and respond to.

1) I suggest that we give 1/2 grand prix points to MCA sanctioned tournaments with time controls that are faster than G/90 but slower than G/30. The successes of the

Barto Memorial and the Bozeman Blizzard and Groundhog events strongly suggest that the MCA membership would like to at least debate this idea.

2) I think we should raise the yearly dues by \$2 for adults. Youth membership would be 1/2 that of adults but would not be a voting membership. Family memberships could remain the same price but with only one newsletter and one vote.

3) I suggest that we raise the entry for the Montana Open to \$25. This is not only in keeping with general tournament prices, but also will allow the organizer of the Open some much needed financial flexibility--especially as regards locating a playing site.

4) Greg Nowak proposes that we change the bylaws regarding the seeding in the State Championship of players who were tied for 1st place in the previous State Closed. Greg proposes that the same tie break system that determines who will get the Championship trophy should determine which player gets the nod for being seeded in the following year's Montana Closed as the current champion. Sounds OK to me.

5). Paul Motta is increasingly occupied by business and travel and is looking for someone to maintain the website. If you are interested, contact Paul or an MCA officer.

So, there is plenty of fodder to chew on. Let the MCA officers know what you think.

Montana Chess News is published by the Montana Chess Association, an affiliate of the U. S. Chess Federation. Subscription and membership in the MCA is \$10/yr regular, \$5/yr junior (Under 18), \$15 family. Discounted 3 year rate: \$25 regular, \$12 junior, \$35 family. First time players who are also new to the USCF shall have their first year's MCA membership fee waived.

**Editor - David Duke**  
P.O. Box 3052  
Billings, MT 59103  
(406)254.2121, 254.8474  
E-mail: dalduke@juno.com

All submissions are welcome, including photos. Articles by E-mail or on a PC-formatted diskette are especially appreciated.

**Publishing Schedule:**

Issue 1 - Mar. 1, Issue 2 (Special for the Open) - May 10, Issue 3 - July 31, Issue 4 - Sept. 25, Issue 5 - Dec. 8. Deadline for most submissions is ten days before the publication date.

**MCA Board (2002-2003)**

**Dan McCourt** - President (721-0254) dmcc@micro-mania.net

**Bill McBroom** - V. President whm@selway.umd.edu

**Jim Skovron** - Sec./Treas (771.0630)

**Mel Drake** - Eastern V.P. (475.3481)

**Greg Nowak** - W. V.P. 125 West Main, Missoula, MT. 59807

*Let them know about your ideas*

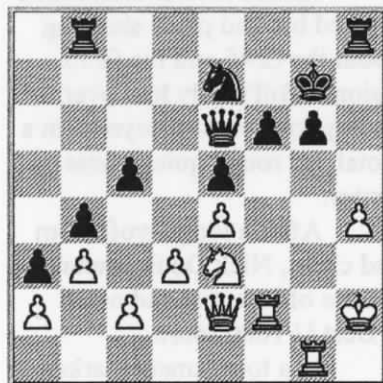
# Nowak & Johansson Co-State Champs

Greg Nowak and Jan Johansson each had four points, to share the title of Montana State Champion. In their head to head game, in the first round, Greg comes away with a win.

2002 Montana State Championship								
#	Name	Rting	Rd1	Rd2	Rd3	Rd4	Rd5	Tot
1	Greg Nowak	2132	W2	W5	W6	D3	D4	4.0
2	Jan Johansson	2029	L1	W4	W3	W5	W6	4.0
3	Michael Jensen	1901	D4	W6	L2	D1	W5	3.0
4	Jim Skovron	1837	D3	L2	L5	D6	D1	1.5
5	Paul Motta	1942	D6	L1	W4	L2	L3	1.5
6	David Duke	1860	D5	L3	L1	D4	L2	1.0

Jan Johansson (2029) - Greg Nowak (2132) [B26]

1.e4 c5 2.Nc3 Nc6 3.g3 g6 4.Bg2 Bg7 5.d3 d6 6.Be3 Rb8 7.Qd2 b5 8.Nge2 b4 9.Nd1 e5 10.0-0 Nge7 11.Bh6 0-0 12.Bxg7 Kxg7 13.f4 f6 14.Ne3 a5 15.h4 Nd4 16.Rf2 a4 17.Raf1 a3 18.b3 Nxe2+ 19.Qxe2 Be6 20.fxe5 dxe5 21.Kh2 Qd7 22.Rg1 h6 23.Bf3 h5 24.g4 hxg4 25.Bxg4 Rh8 26.Bxe6 Qxe6 The crucial position of the game. Black is threatening to win the h4 pawn.



27.Kg2?! (Fritz says White retains the pawn and maintains an even position with 27.Nf5+ Kf7 28. Qg4) 27...Rxh4 28.Kf1 Rf4 29.Ke1 Rh8 30.Rxf4 exf4 31.Ng2 Qe5 32.Qg4 Qc3+ 33.Kf1 Qxc2 34.Nxf4 Qc1+ 35.Kg2 Qe3 Black goes on to win 0-1

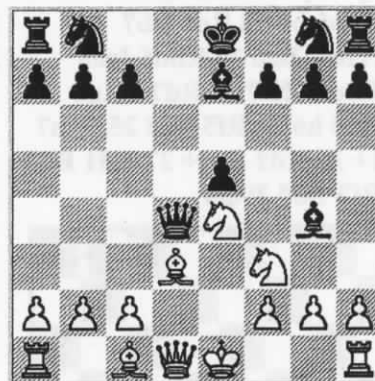
Johansson's only loss in the Closed was to Nowak. The following is a game submitted for publication and analysed by Jan.

Jan Johansson (2029) - Paul Motta (1942) [B00]

1.e4 Nc6 2.Nc3 e6 3.Nf3 Bb4 4.Ne2!? A ploy that makes Bb4 appear misplaced. 4...d5 5.e5 b6 (5...Nh6) 6.c3 Be7 7.d4 Bd7 8.Ng3 Na5 9.Bd3 c5 10.0-0 c4 11.Bc2 h5 12.Ne2 g5?! This is a mistake because of .. 13.Qd2 g4 14.Ng5 Bxg5 15.Qxg5 Qxg5 16.Bxg5 Black's problem is to get his pieces from the Q-side to join in the battle on the K-side, while White's forces are well placed for an attack on the K-side. 16...Ne7 (16...h4 17.f3 Rh5 is better) 17.Bf6! Rf8 [17...Rh6] 18.Ng3 (18. Nf4 is more effective) 18...Bc6 19.Nxh5 Kd7 20.Bxe7 By removing Black's best placed piece White is trying to make Black helpless. (20.f3! g3 21.Nxg3 ) 20...Kxe7 21.Nf6 Rh8 22.Nxg4 Rag8 23.Nf6 Rg7 24.f4 Nb7 25.Rae1 Nd6?! 26.exd6+ Black resigned. After 26. . Kxf6 27. f5 , White opens up the position with a two pawn advantage. Black would soon have to give up more material. 1-0

Paul Motta's win came in third round against Jim Skovron.

Paul Motta- Jim Skovron [D00]  
1.d4 d5 2.e4 dxe4 3.Nc3 e5 4.Nxe4 Qxd4 5.Bd3 Be7 6.Nf3 Bg4

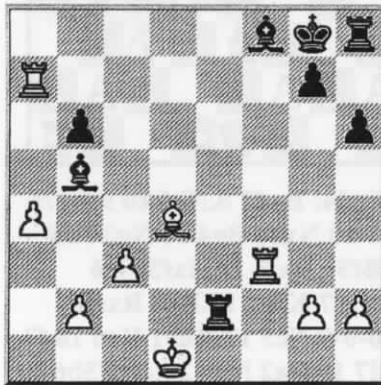


7.Nxd4! Bxd1 8.Nb5 c6 9.Nc7+ Kd7 10.Nxa8 Bg4 11.Ng3 Nf6 12.Bf5+ Bxf5 13.Nxf5 Na6 14.Nxe7 Kxe7 15.Bg5 Rxa8 16.0-0-0 Nc5 17.Rhe1 Ke6 18.f3 Ncd7 19.Re2 Nd5 20.c4 N5b6 21.b3 f6 22.Be3 Nc8 23.Red2 Ncb6 24.Rd6+ Ke7 25.f4 exf4 26.Bxf4 Ne5 27.Bxe5 White will win another pawn and bring home the win. 27...fxe5 28.c5 Nd5 29.Re1 Re8 30.Rxe5+ Kf7 31.Rxe8 Kxe8 32.Kd2 Ke7 33.g3 Ke8 34.a3 a5 35.Kd3 Ke7 36.Rxd5 cxd5 37.Kd4 Ke6 38.b4 a4 39.g4 h6 40.b5 g6 41.h4 h5 42.g5 b6 43.cxb6 Kd6 44.b7 Kc7 45.b8Q+ Kxb8 46.Kxd5 1-0

Michael Jensen is a former Montana State Champion and frequently places at the top. In the last round of the Closed, Michael accepts the gambit pawn of Paul Motta's Blackmar Demeir and holds on for the win.

Paul Motta (1942) - Michael Jensen (1901) [D00]

1.d4 Nf6 2.Nc3 d5 3.e4 Nxe4  
4.Nxe4 dxe4 5.Bc4 Nc6 6.c3 e5  
7.d5 Ne7 8.f3 exf3 9.Nxf3 Qd6  
10.Qe2 f6 11.Be3 Nxd5 12.0-0-0  
c6 13.Bb3 Qc7 14.Bxd5 cxd5  
15.Qb5+ Qc6 [15...Bd7  
16.Qxd5] 16.Rxd5 Qxb5  
17.Rxb5 b6 18.Rd1 Bb7  
19.Nxe5! Ba6 20.Rbd5 fxe5  
21.Rxe5+ Kf7 22.Rd7+ Kg8  
23.Bd4 h6 24.Rf5 Re8 25.Rxa7  
Re1+ 26.Kd2 Re2+ 27.Kd1 Bd3  
28.Rf3 Bb5 29.a4

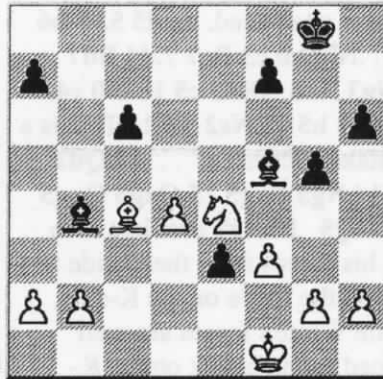


29...Re7! Just when it looked like White was going to win material and take the game, Black finds the right move. 30.Rxe7 Bxa4+ 31.Ke1 Bxe7 32.Bxb6 Kh7 33.Rf4 Bb3 34.Bd4 Rf8 35.Rxf8 Bxf8 36.Kf2 Kg6 37.Ke3 Kf5 38.Kd3 g6 39.Be3 h5 40.Bd4 Bd6 41.Bg1 Ke5 42.c4 Bb4 43.Bd4+ Kd6 44.h3 Bc5 45.Bf6 Bg1 46.g4 hxg4 47.hxg4 Bh2 48.Kc3 Bd1 0-1

The final game from the Closed features the first round game between Jim Skovron and Michael Jensen. The Queens come off early and the endgame is a seesaw battle.

Jim Skovron (1837) - Michael Jensen (1901) [D32]

1.d4 d5 2.c4 e6 3.Nc3 c5 4.Bf4  
cxd4 5.Qxd4 Nc6 6.Qd3 e5  
7.cxd5 exf4 8.dxc6 Qxd3 9.exd3  
bxc6 10.d4 Bf5 11.Bc4 Nf6  
12.Nf3 Bd6 13.0-0 0-0 14.Rfe1  
Rfe8 15.Ng5 Bg6 16.f3 Rab8  
17.Rxe8+ Rxe8 18.Kf1 h6  
19.Nh3 Bf5 20.Nf2 g5 21.Re1  
Re3 22.Nce4 Nxe4 23.Nxe4 Bb4  
24.Rxe3 fxe3



25.Nc3 This is an important move which cuts off Black's B from the d2 square and also leads to the win of the pawn on d3.

25. ...Bd6 26.g3 h5 27.Nd1 h4  
28.Nxe3 Bd7 29.Kf2 Kg7  
30.Ng2 hxg3+ 31.hxg3 f5 32.f4  
Kf6 33.fxg5+ Kxg5 34.Kf3 Bb4  
35.Nf4 Kf6 36.Nd3 Bd6 37.a3  
Be8 38.Nc5 Bh5+ 39.Kf2 Bg6  
40.Nd7+ Ke7 41.Ne5 Be8  
42.Ke3 Kf6 43.Kf4 c5 44.Kf3  
Dtau offered and accepted.  
1/2 - 1/2

Bozeman Blizzard  
Dec. 7 and 8

## BARTO OPEN

By Dan McCourt

The John Barto Memorial came off very well September 27-28 with 17 participants in a "new look", two-session/one-fee, format.

Haluk Beyenal, buoyed by a five-round sweep of the Sunday session, captured the Best Overall trophy outdistancing second-place finishers Bill McBroom and Steve Fusselman. Haluk finished the weekend without any losses collecting two first-place awards and also Best Unrated/Provisional.

Fusselman's 4.5 score not only secured the trophy for Saturday's G/45 session, but certainly belied his 825 provisional rating. Steve also picked the award for the Best Youth Score.

McBroom's overall finish mirrored his 2nd place showing in both the G/45 and the G/15 sessions. Bill's only loss over the two-day span was to Beyenal in a pivotal 3rd round quick-chess encounter.

After a long layoff from rated chess, Nick Doulas returned to shake off the rust and notch the Best U/1600 score.

In a tournament marked by numerous surprises, it was Mike Shuyler who took away the Biggest Upset prize with 576 point differential in his quick-chess victory over Steve Scarff.

Thank and a big tip of the MCA hat to the Bozeman Chess Club for landing a great playing site for the Championship closed and the Barto Memorial.

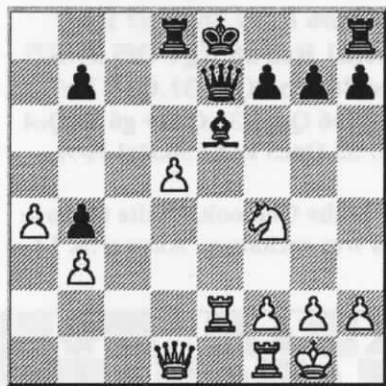


## BARTO GAMES

The following games from the Barto features those players who came won the Barto. The MCA did not receive all of the scoresheets, and therefore the following games are chosen from those games available.

**Steve Fusselman** had a break through tournament by placing first in the G/45 tournament. In the following game, Steve develops and castles early, and later catches the Black King which was left in the middle of the board.

Steve Fusselman (825 Provisional) - Michael Long (1775)  
 1.e4 c5 2.Bc4 e6 3.Nc3 a6 4.a4 Nc6 5.Nge2 Nge7 6.0-0 d5 7.exd5 exd5 8.Ba2 Nb4 9.d4 c4 10.b3 Nxa2 11.Rxa2 cxb3 12.cxb3 Nc6 13.Nf4 Nb4 14.Re2+ Be7 15.Ba3 a5 16.Bxb4 axb4 17.Ncx5 Be6 18.Nxe7 Qxe7 19.d5 Rd8 White to move and win a piece

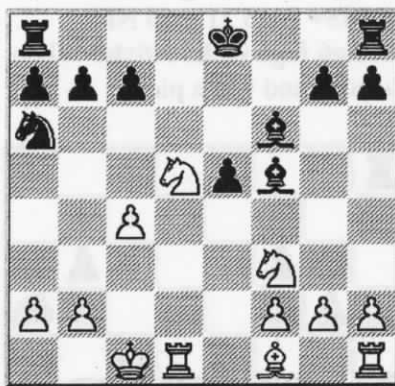


20.Nxe6?! Better is moving the Q out of the way with 20.Qb1 and then winning the Be6 with the pawn with dxe6 on the next move. With the text, Black is able to trade pieces evenly.  
 20...fxe6 21.Rxe6 Qxe6 22.dxe6

Rxd1 23.Rxd1 Ke7 24.Rd7+ Kxe6 25.Rxb7 Rd8 26.g3 1-0

**Haluk Beyenal** won the best over-all trophy for his consistent play on both days.

Haluk Beyenal (1723) - Dan McCourt (1687)  
 1.d4 f5 2.c4 Nf6 3.Bg5 e6 4.Nf3 d6 5.Nc3 Be7 6.Bxf6 Bxf6 7.e4 e5 8.dxe5 dxe5 9.Qxd8+ Kxd8 10.0-0-0+ Ke8 11.exf5 Bxf5 12.Nd5 Na6



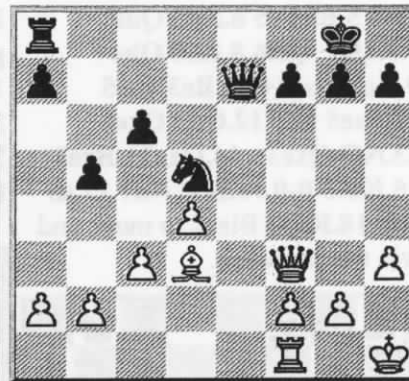
13.Nxf6+?! Fritz suggested the following winning moves: 13.c5! with a discovery attack on the Na6 by Bf1. The Na6 protects the important pawn on c7. Now if 13...Nxc5 then 14.Nxc7+ wins the exchange. 13...gxf6 14.Nh4 Be6 15.Bd3 Rd8 16.a3 Nc5 17.Kc2 e4 18.Be2 Rxd1 19.Rxd1 Ke7 20.b4 Nd7 21.f3 exf3 22.Bxf3 b6 23.Bd5 Ne5 24.Bxe6 Kxe6 25.Kc3 Rg8 26.g3 Kf7 1/2-1/2 Draw agreed.

In the following game in 45, **Bill McBroom**, 2nd over-all finisher, shows the value of good clock management.

Dan McCourt (1704) - Bill McBroom (1629) [B13]

1.e4 c6 2.d4 d5 3.exd5 Qxd5

4.Nf3 Nf6 5.Be2 Bf5 6.0-0 e6 7.c3 Bd6 8.Nbd2 0-0 9.Nc4 Be7 10.Ne3 Qa5 11.Ne5 Nbd7 12.Nxf5 exf5 13.Nc4 Qc7 14.Qc2 b5 15.Nd2 Bd6 16.Nf3 Ng4 17.h3 Nh2 18.Nxh2 Bxh2+ 19.Kh1 Bf4 20.Qxf5 Bxc1 21.Raxc1 Rfe8 22.Bd3 Nf6 23.Rce1 Re7 24.Rxe7 Qxe7 25.Qf3 Nd5 White to move and win a pawn.



26.Bxb5! cxb5 27.Qxd5 Rb8 28.Qf3 Re8 29.d5 Qd6 30.Qd3 a6 31.g3 Re5 32.Rd1 Rh5 33.Kg2 Re5 34.f4 Re8 35.Rd2 h6 36.Kf2 g5 37.fgx5 hxg5 38.Qf3 Qc5+ 39.Rd4 Qd6 40.Rg4 Qc5+ 41.Kg2 Score-sheet end here, Black has about 20 minutes left on the clock and White had 2 minutes. 0-1

Jim Cadwallader (768) - Phillip Clark (1088) [C41]

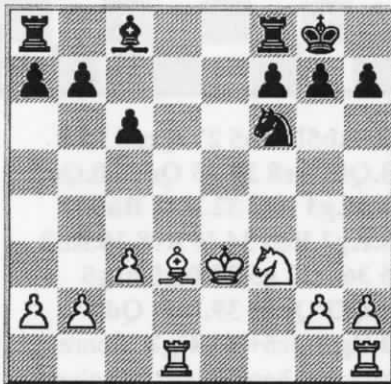
1.e4 e5 2.Nf3 d6 3.Nc3 Nf6 4.d4 exd4 5.Nxd4 Bd7 6.Qf3 Nc6 7.Nxc6 Bxc6 8.Nd5 Be7 9.Bf4 0-0 10.Bd3 Bd7 11.Nxf6+ Bxf6 12.0-0-0 Be6 13.b3 a5 14.a4 Bg5 15.g3 Bxf4+ 16.gxf4 Qd7 17.f5 Bxb3 18.cxb3 Qc6+ 19.Bc4 Rab8 20.Kb1 Qd7 21.Bb5 c6 22.Bd3 b5 23.axb5 cxb5 24.Rhg1 f6 25.Qg3 b4 26.Bc4+ Kh8 27.Rxd6 Qa7 28.Be6 a4 29.Rd7 Rb7 30.Qxg7# 1-0

## CHINOOK GAMES

Some of the most interesting games in this issue come from the Chinook. In the next game, **Jim Skovron** finds adequate resources to get a draw.

Jim Skovron (1837) - Jan Johansson (2052)

1.e4 d6 2.d4 Nf6 3.Nc3 c6 4.f4 Qa5 5.Bd2 e5 6.Nd5 Qd8 7.Nxf6+ Qxf6 8.fxe5 Qh4+ 9.Ke2 Qxe4+ 10.Be3 dxe5 11.dxe5 Bc5 12.Qd3 Qxe5 13.Nf3 Qxe3+ 14.Qxe3+ Bxe3 15.Kxe3 0-0 16.Bd3 Nd7 17.c3 Nf6 18.Rad1 Black to move and win the exchange.

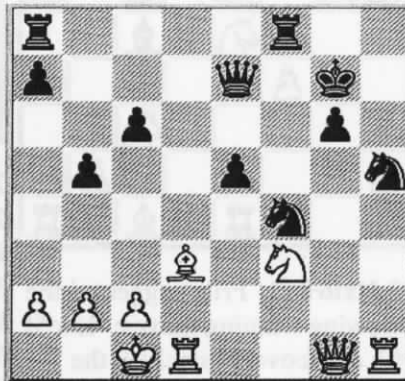


18...Bg4 ?! (Black wins the exchange by 18...Ng4+ !. Black threatens forks on f2 and e3. For example 19.Ke2 (to protect f2) Re8+ 20. Kf1 Ne3+) 19.Rd2 Rfe8+ 20.Kf2 Ne4+ 21.Bxe4 Rxe4 22.h3 Bxf3 23.Kxf3 Rae8 24.Rhd1 f6 25.Rd8 Kf7 26.R1d7+ R8e7 27.Rxb7 Re3+ 28.Kf2 Re2+ 29.Kf3 Rxb7 30.Kxe2 Rxb2+ 31.Kf3 Rxa2 32.Rc8 Ra6 33.Rc7+ Kg6 34.g4 h5 35.gxh5+ Kxh5 36.Rxg7 Ra3 37.Kf4 Rxc3 38.Rxa7 Kg6 39.Rc7 e5 40.h4 c4 41.Rc6 Rc1 42.Ke3 c3 43.h5+ Kxh5 44.Rxf6 Re1+ 45.Kd3 ½-½

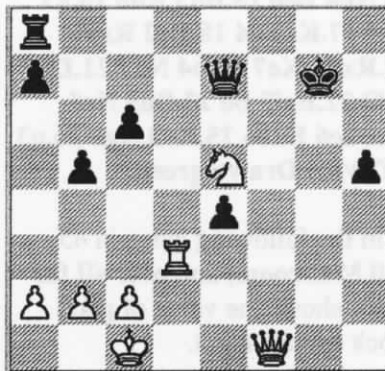
In the next game, **Dan McCourt** tags **Jim Skovron** for the loss. Dan placed second the Chinook.

Dan McCourt (1689) - Jim Skovron (1837)

1.e4 d6 2.d4 c6 3.Bc4 Nf6 4.Nc3 b5 5.Bd3 g6 6.f3 Bg7 7.Be3 0-0 8.Qd2 e5 9.dxe5 dxe5 10.h4 Qc7 11.g4 h5 12.Bh6 hxg4 13.Bxg7 Kxg7 14.0-0-0 Nh5 15.Nce2 gxf3 16.Nxf3 Nd7 17.Qg5 Qd8 18.Qg1 Qe7 19.Ng3 Ndf6 20.Nf5+ Bxf5 21.exf5 Nf4 22.fxg6 fxg6 23.h5 N6xh5 White to move and win a piece.



24.Rxh5! Nxd3+ 25.Rxd3 e4 26.Ne5 Rf1+ 27.Qxf1 gxh5 White to move, Mate in 5.

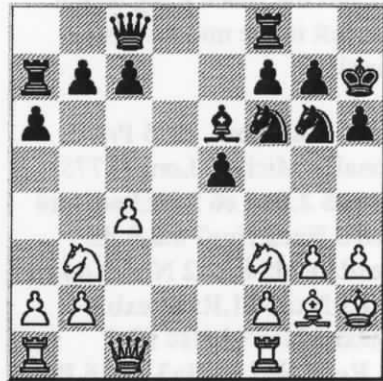


28.Rg3+ Kh6 29.Nf7+ Black resigns {The mate in 5 - 28. Rg3+ Kh6 29.Qf4+ Kh7 30.Qf5+ Kh8 31.Qxh5+ Qh7 32.Nf7#}

**Nick Doulas** comes through and gets a draw from **Dennis Petrak**. Nick also won the Best under 1600 in the Barto Memorial.

Nick Doulas (1262) - Dennis Petrak (1721)

1.Nf3 Nc6 2.g3 e5 3.d3 h6 4.Bg2 Nf6 5.0-0 Bc5 6.h3 d6 7.Nbd2 0-0 8.e4 Be6 9.c3 a6 10.Nb3 Ba7 11.c4 Ne7 12.Bd2 Ng6 13.Qc1 Qc8 14.Kh2 Kh7 15.d4 Nxe4 16.Be3 Nf6 17.dxe5 dxe5 18.Bxa7 Rxa7 White to move and win a pawn.



19.Qe3 b6 20.Nxe5 Nxe5 21.Qxe5 Bxc4 22.Rfe1 Re8 23.Qc3 Bxb3 24.Qxb3 c5 25.Qxb6 Rae7 26.Rxe7 Rxe7 27.Rd1 Re2 28.Kg1 Qf5 29.Rf1 Re6 30.Qb3 Qe5 31.Qb7 Re7 32.Qxa6 Qxb2 33.Qd3+ g6 34.Qc4 Ra7 35.Qxc5 Rxa2 36.Re1 ½-½

From the Chinook, White to move and win exchange. Answer:p. 12

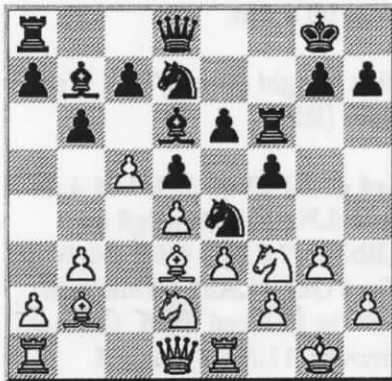


## TURKEY GAMES

The following game from the Turkey was one of the most interesting. **Sherwood Moore** exchanges his R for a B and pawn. The strategy paid off.

Mike Stubblefield (1635) - Sherwood Moore (1640)

1.d4 Nf6 2.Nf3 b6 3.e3 Bb7  
4.Bd3 d5 5.0-0 e6 6.b3 Bd6  
7.Bb2 Nbd7 8.Re1 Ne4 9.Nbd2  
0-0 10.c4 f5 11.g3 Rf6 12.c5



12...bxc5 Black decides to give up his Rf6 for a B and a pawn. After the exchange, the position is even. Black's hope is on his two bishops which control the center and aim for the Kingside.  
13.dxc5 Ndx5 14.Bxf6 Qxf6  
15.Bf1 Rf8 16.Nd4 a6 17.f4 g5  
18.b4 Nc3 19.Qh5 N5e4  
20.Nxe4 Nxe4 21.fgx5 Nxe5  
22.Bd3 Ne4 23.Bxe4 dxe4  
24.Red1 e5 25.Ne2 Kh8 26.Rf1  
Bd5 27.Nc3 Bc6 28.a3 Qe6  
29.Qe2 f4 30.exf4 exf4 31.g4 f3  
32.Qb2 Qxg4+ 33.Kh1 Be5  
34.Rg1 Qf4 35.Rg3 f2 36.Nd5  
Bxd5 White resigns 0-1

January Thaw  
January 18, 19 2003  
Helena, MT.

**Pat Kirlin** was one of the Spokane Washington players who came and supported the Turkey. For Pat, the trip was a sweetened by this next game, the biggest upset of the tournament.

Pat Kirlin (1289) - Dan McCourt (1689) [A10]

1.c4 f5 2.Qc2 d6 3.Nf3 Nf6 4.d4  
g6 5.e3 Bg7 6.Be2 c6 7.0-0 0-0  
8.b3 Na6 9.a3 Nc7 10.Bb2 Kh8  
11.b4 Bd7 12.a4 Rc8 13.b5 Qe8  
14.Nc3 Ne6 15.Qb3 Qd8 16.a5  
cxb5 17.cxb5 h6 18.Nd2 f4  
19.d5 Nc5 20.Qb4 fxe3 21.fxe3  
e5 22.dxe6 Bxe6 23.Nce4 Qe7  
24.Nxf6 Bxf6 25.Bxf6+ Rxf6  
26.Rxf6 Qxf6 27.Qd4 Qxd4  
28.exd4 Nd7 29.Bd3 Kg7  
30.Ne4 d5 31.Nd6 Rc3 32.Rd1  
b6 33.a6 Nf8 34.Rd2 Rc7?  
35.Ne8+ Black resigns 1-0

**Kirk Lundby** has been a faithful and regular tournament player. In the next game, Kirk gets a hard fought draw.

John Wynecoop (1407) - Kirk Lundby (1242) [C02]

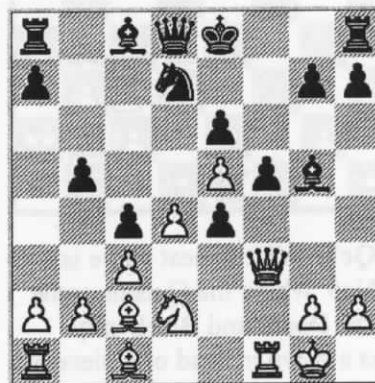
1.d4 e6 2.e4 d5 3.e5 b6 4.Bd3 c5  
5.c3 c4 6.Be2 b5 7.Nf3 Be7 8.0-0  
h6 9.b3 Bg5 10.bxc4 bxc4  
11.Nbd2 Bd7 12.Ba3 Be7  
13.Qc1 Bxa3 14.Qxa3 Ne7  
15.Rab1 0-0 16.Rb7 Nbc6  
17.Rfb1 Re8 18.Bd1 a5 19.Ba4  
Ra7 20.Rxa7 [Fritz recommends  
20.Qd6 which applies pressure  
and wins the exchange. E.g.  
20...Bc8 21.Rxa7 Nxa7 22.Bxe8  
Qxe8 23.Rb8 Nac6 24.Rb6]  
20...Nxa7 21.Bxd7 Qxd7  
22.Qxa5 Nec6 23.Qa4 Rb8  
24.Rxb8+ Nxb8 25.Qxd7 Nxd7

26.Ne1 Nb6 27.Nc2 Na4 28.Nb1  
Nb5 29.Kf1 Nbxc3 30.Nxc3  
Nxc3 31.a3 Kf8 32.Ke1 Ke7  
33.Kd2 Ne4+ 34.Ke3 Kd7 35.f3  
Nc3 36.Kd2 Nb5 37.a4 Nc7  
38.Kc3 Kc6 39.Nb4+ Kb6  
40.Kb2 Ka5 41.Ka3 Na6  
42.Nxa6 Kxa6 43.Kb4 Kb6  
44.g3 g5 45.g4 Ka6 46.a5 c3  
47.Kxc3 Kxa5 48.Kb3 Kb5  
49.h3 Ka5 50.Ka3 Kb6 51.Kb4  
Kc6 52.Ka5 Kd7 53.Kb6 Ke7  
54.Kc7 Kf8 55.Kd7 Kg7 56.Ke7  
Kg6 57.Kd7 h5 58.Ke7 h4  
59.Kd7 Kg7 60.Ke7 Kg8 61.Ke8  
Draw Agreed 1/2-1/2

The next Turkey game is noteworthy due to the tactics.

Jim Skovron (1837) - Ron Weyland (1331) [D00]

1.d4 d5 2.e3 e6 3.Bd3 c5 4.c3  
Nf6 5.Nd2 Nc6 6.f4 c4 7.Bc2 b5  
8.Ngf3 Be7 9.Ne5 Nxe5 10.fxe5  
Nd7 11.0-0 Bg5 12.Qf3 f5 13.e4!  
dxe4



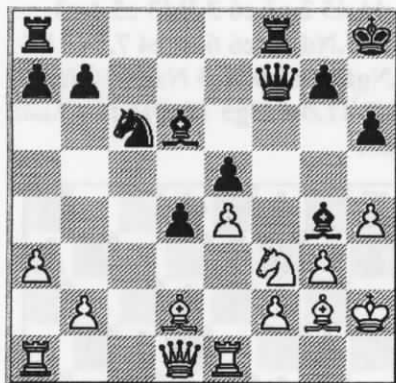
14.Nxe4! Bb7? Black cannot play fxe4, due to Qf7# 15.Nd6+ Kf8 16.Qxb7 Bxc1 17.Raxc1 g6 18.Qxb5 Nb6 19.Qc5 Kg7 20.g4 Qg5 White to move, Mate in 8 - 21.Qc7+ Kh6 22.Nf7+ (Black resigned at this point) 22...Kg7 23.Nxg5+ Kh6 24.Nxe6 Nd7 25.Qxd7 Rag8 26.g5+ Kh5 27.Rf4 Rd8 28.Bd1# 1-0



David Griffin and other Spokane players have made regular trips to support the Missoula tournaments. In the following game, David wins over Nick Doulas, who recently place best under 1600 at the Barto and did well in the Chinook.

Nick Doulas (1262) - David Griffin (1449) [A08]

1.Nf3 d5 2.g3 c5 3.Bg2 Nc6 4.0-0 e5 5.d3 Nf6 6.Nbd2 Bd6 7.Re1 0-0 8.c3 Be6 9.e4 d4 10.h4 h6 11.Nf1 Ng4 12.N1h2 Qd7 13.Nxg4 Bxg4 14.Kh2 Kh8 15.Bd2 f5 16.cxd4 fxe4 17.dxe4 cxd4 18.a3 Qf7 Black threatens to win the Nf3. White has a dynamic move to save the piece and take the Qs off the board



19.Qc1? White's best move is 19.Ng5 where the Queens come off the Board and Black only wins a pawn instead of a piece as in the game. For example 19...Bxd1 20.Nxf7+ Rxf7 21.Raxd1 Rxf2] 19...Bxf3 20.Bxf3 Qxf3 21.Rf1 Rf6 22.Bb4 Bxb4 23.axb4 Raf8 24.b5 Qxe4 25.bxc6 Black to move, Mate in 425...Rxf2+ 26.Rxf2 Rxf2+ 27.Kh3 Qf5+ 28.g4 Qf3# 0-1

## Miscellaneous Games

Steve Scarff submits the following game from the Triple Header.

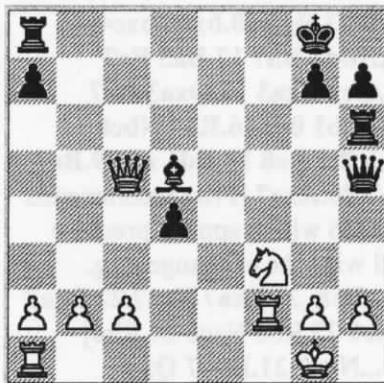
Steve Scarff - J. Pedry [B32] Triple Header Action

1.d4 c5 2.e4 cxd4 3.Nf3 Nc6 4.Bc4 e6 5.0-0 Bc5 6.Bg5 Nge7 7.Nbd2 d5 8.exd5 exd5 9.Be2 h6 10.Bh4 g5 11.Bg3 f5 12.Be5 Nxe5 13.Nxe5 a6 14.Bh5+! Kf8 15.Nf7 Qb6 16.Nxh8 Be6 17.Ng6+ Nxg6 18.Bxg6 Bd7 19.Nb3 Bb5 20.Nxc5 Bxf1? 21.Nd7+ Black resigns 1-0

From the UCCC, First Fall Open comes the next game.

William McBroom, W (1629) - Dan McCourt, D (1680) [C63]

1.e4 e5 2.Nf3 Nc6 3.Bb5 f5 4.Bxc6 bxc6 5.d4 fxe4 6.Nxe5 Nf6 7.0-0 Be7 8.Bg5 Bb7 9.Nd2 d5 10.f3 0-0 11.Bxf6 Bxf6 12.fxe4 c5 13.exd5 cxd4 14.Ng4 Qxd5 15.Nf3 c5 16.Qd3 Qh5 17.Nxf6+ Rxf6 18.Rf2 Rh6 19.Qc4+ Bd5 20.Qxc5 Black to move and win a piece



20...Bxf3! 21.Qxh5 Bxh5

22.Raf1 Rd6 23.Rf5 Bg6 24.Rc5 Rd7 25.Rf3 Be4 26.Rb3 Rf8 27.Rb4 d3 28.cxd3 Bxd3 29.Rc1 Rdf7 30.h3 g6 31.Rd4 Bf5 32.Rf1 Kg7 33.Rdf4 Be6 34.Rxf7+ Rxf7 35.Rxf7+ Bxf7 36.a3 a5 37.b4 axb4 38.axb4 Kf6 39.Kf2 Bc4 40.Ke3 Ke5 41.g4 h6 42.h4 Be6 43.Kf3 Bd7 44.g5 hxg5 45.hxg5 Kf5 46.Kg3 Kxg5 47.Kf3 Kh4 48.Kg2 g5 49.Kh2 Bc6 50.Kg1 Kh3 White resigns 0-1

From the UCCC 3rd Summer Open, newcomer Nick Wright picks up a win.

Nick Wright (Unr) - Tom Wacker (950) [B50]

1.e4 c5 2.Nf3 d6 3.Bc4 e6 4.d4 cxd4 5.Nxd4 Nf6 6.Bg5 a6 7.Bb3 Be7 8.Nc3 0-0 9.0-0 Nbd7 10.a4 Qc7 11.Re1 (White best move is 11.Bxe6 fxe6 12.Nxe6 Qmoves 13.Nxf8) 11...d5 12.exd5 Bd6 13.dxe6 Bxh2+ 14.Kf1 Nc5 15.exf7+ Kh8 16.Bxf6 Nxb3 17.Bxg7+ Kxg7 18.Nxb3 Rxf7 19.Qd4+ Kf8 (White to move, Mate in one. 20. Qh8#) 20.Nc5 Qb6 21.N3e4 Qf6 22.Rad1 Qf5 23.Rd2 Bg3 24.Nxg3 Qg6 25.Qh8+ Qg8 26.Qxg8+ Kxg8 27.Rd8+ Kg7 28.Ree8 Black resigns 1-0

\*\*\*\*\*  
 ★  
 ★ **Web Sites** ★  
 ★ For local chess info, check out ★  
 ★ these web sites: ★  
 ★ www.web-ballistics.com/mca ★  
 ★ www.montanachess.com ★  
 ★ http://spokanechessclub.org ★  
 ★ http://idahochess.org ★  
 ★  
 ★\*\*\*\*\*



## Time Bandits Win Team Championship in "Timely Fashion" by Greg Nowak

On a lovely summer day, 5 teams vied for the coveted title of 9<sup>th</sup> N.W. Team Championship. It was held June 15 at the popular Doublefront Chicken banquet room in Missoula. Loren Meierding's "Time Bandits" just won over Hans Anderson's "82<sup>nd</sup> Armored Division." Both had 4 match points out of 5, but the Time Bandits won on game points tie breakers by ½ points.

The other teams in order of finish were Greg Nowak's "Chess Lahar" with 3.5 points, Scott Stanley's "Northern Knights" with 2.0 points, and Dan McCourt's "Nasty 9" Knights" with 1.5 points. Event was G/30 unrated chess fun. Directed and promoted by Greg Nowak.

Best board winners were:

Bd#1	Greg Nowak	4-0	Chess Lahar
Bd#2	M. Stubblefield	3-1	Nasty 9" Knights
Bd#3	Haluk Beyenal	4-0	Time Bandits
Bd#4	Aaron Coffin	4-0	82 <sup>nd</sup> Armored Division

9th Greater N.W. Team Tourney - Final Team Results										
#	Name	#1	#2	#3	#4	#5	#6	Match Points	Game Points	Final Place
1	Nasty 9" Knights	X	0	0	0	.5	1	1.5	4.0	5
2	Chess Lahar	1	X	.5	1	0	1	3.5	11.5	3
3	Time Bandits	1	.5	X	1	.5	1	4.0	10	1
4	Northern Knights	1	0	0	X	0	1	2.0	4.5	4
5	82nd Armored	.5	1	.5	1	X	1	4.0	9.5	2
6	Bye	0	0	0	0	0	X	0.0	0.0	

9th Greater N.W. Team Tourney - Time Bandits (#1)								
#	Name	#1	#2	#3	#4	#5	#6	Tot
1	Loren Meierding	1	0	X	1	1	1	5.0
2	Doug Hansen	0	1	X	0	0	1	2.0
3	Haluk Beyenal	1	1	X	1	1	1	5.0
4	David Reinhold	1	0	X	1	0	1	3.0

9th Greater N.W. Team Tourney - 82nd Armored Div. (#2)								
#	Name	#1	#2	#3	#4	#5	#6	Tot
1	Hans Anderson	1	0	0	1	X	1	3.0
2	Paul Svelmoe	0	.5	1	1	X	1	3.5
3	John Hays	0	1	0	.5	X	1	2.5
4	Aaron Coffin	1	1	1	1	X	1	5.0

9th Greater N.W. Team Tourney - Nasty 9" Knights (#5)								
#	Name	#1	#2	#3	#4	#5	#6	Tot
1	Dan McCourt	X	0	0	0	0	1	1.0
2	Mike Stubblefield	X	0	1	1	1	1	4.0
3	Jim Stubblefield	X	0	0	0	1	1	2.0
4	Ken Westphal	X	0	0	0	0	1	1.0

9th Greater N.W. Team Tourney - Chess Lahar (#3)								
#	Name	#1	#2	#3	#4	#5	#6	Tot
1	Greg Nowak	1	X	1	1	1	1	5.0
2	Paul Mitchell	1	X	0	1	.5	1	3.5
3	Russ Kubisiak	1	X	0	1	0	1	3.0
4	Mike Carlin	1	X	1	1	0	1	4.0

9th Greater N.W. Team Tourney - Northern Knights (#4)								
#	Name	#1	#2	#3	#4	#5	#6	Tot
1	Scott Stanley	1	0	0	X	0	1	2.0
2	RAJ	0	0	1	X	0	1	2.0
3	Don Robinson	1	0	0	X	.5	1	2.5
4	Buck Wallac	1	0	0	X	0	1	2.0

# RECENT EVENTS

## 2002 John Barto Memorial - Bozeman (G/45)

#	Name	Rtng	Rd1	Rd2	Rd3	Rd4	Rd5	Tot
1	Steve Fusselman	825	W13	D9	W10	W6	W8	4.5
2	William McBroom	1620	W6	D8	W9	W4	D3	4.0
3	Hluk Beyenal	1723	W11	W10	D4	W8	D2	4.0
4	Dan McCourt	1687	W15	W7	D3	L2	D9	3.0
5	Conrad Donovan	1237	L8	W12	W11	L9	W10	3.0
6	Michael Kent	931	L2	W13	B—	L1	W14	3.0
7	Nick Doulas	1262	W12	L4	L8	W14	W11	3.0
8	Michael Long	1775	W5	D2	W7	L3	L1	2.5
9	Sherwood Moore	1659	H—	D1	L2	W5	D4	2.5
10	Kirk Lundby	1401	W14	L3	L1	W12	L5	2.0
11	Mike Shuyler	1211	l3	w14	l5	w15	l7	2.0
12	Jim Cadwallader	768	L7	L5	W15	L10	D13	1.5
13	Melvin Drake	1156	L1	L6	L14	B—	D12	1.0
14	Gavin Drake	Unr	L10	L11	W13	L7	L6	1.0
15	Phillip Clark	1088	L4	B—	L12	L11	U—	1.0

## 2002 John Barto Memorial - Bozeman (Quick Chess)

#	Name	Rtng	Rd1	Rd2	Rd3	Rd4	Rd5	Tot
1	Haluk Beyenal	1723	W13	W12	W2	W3	W4	5.0
2	William McBroom	1731	W10	W6	L1	D5	W11	3.5
3	Sherwood Moore	1630	W4	W8	W7	L1	L5	3.0
4	Steven Fusselman	825	L3	B—	W6	W11	L1	3.0
5	Dan McCourt	1690	L8	D13	B—	D2	W3	3.0
6	Kirk Lundby	1360	W7	L2	L4	W13	D9	2.5
7	Brandon Baines	1756	L6	W9	L3	D10	W13	2.5
8	Michael Kent	931	W5	L3	L11	B—	D10	2.5
9	Jim Cadwallader	768	B—	L7	L10	W12	D6	2.5
10	Nick Doulas	1262	L2	L11	W9	D7	D8	2.0
11	Mike Shuyler	1154	W11	L1	L13	L9	B—	2.0
12	Phillip Clark	1022	L1	D5	W12	L6	L7	1.5

## 2002 Chinook Open - Great Falls

#	Name	Rtng	Rd1	Rd2	Rd3	Rd4	Rd5	Tot
1	Jan Johansson	2052	W9	W4	W2	D3	W8	4.5
2	Daniel McCourt	1689	W5	W3	L1	W8	W4	4.0
3	Jim Skovron	1837	W6	L2	W8	D1	W9	3.5
4	Robert Mitchell	1603	W12	L1	W6	W5	L2	3.0
5	Henry Pallares	Unr	L2	W10	W9	L4	W11	3.0
6	Kirk Lundby	1242	L2	W12	L4	B—	W13	3.0
7	Dennis Petrak	1721	W13	L8	D11	L9	W10	2.5
8	Richard Cohen	1500	W10	W7	L3	L2	L1	2.0
9	William Furdell	1316	L1	W11	L5	W7	L3	2.0
10	Walter Shields	1307	L8	L5	B—	W12	L7	2.0
11	Nick Doulas	1262	B—	L9	D7	D13	L5	2.0
12	Stephen Tamang	Unr.	L4	L6	W13	L10	B—	2.0
13	Scott Hunt	939	L7	B—	L12	D11	L6	1.5

## 2002 Turkey Open - Missoula - UCCC - (G/2)

#	Name	Rtng	Rd 1	Rd 2	Rd 3	Rd 4	Tot
1	Greg Nowak	2134	W10	W6	W4	D2	3.5
2	Jan Johansson	2052	W11	W8	W9	D1	3.5
3	David Duke	1860	W12	L9	W10	W6	3.0
4	Jim Skovron	1837	W13	W14	L1	W8	3.0
5	Dan McCourt	1689	L14	W12	W13	L9	2.0
6	Phillip Weyland	1682	W15	L1	W14	L3	2.0
7	Sherwood Moore	1640	—	B(.5)	W11	W18	2.5
8	Kevin Korsmo	1627	W16	L2	W17	L4	2.0
9	Henry Pallares	Unr	W1	W3	L2	W5	3.0
10	David Griffin	1449	L1	W15	L3	W14	2.0
11	John Wynecoop	1407	L2	D16	L7	W17	1.5
12	Scott Yount	1386	L3	L5	W15	W13	2.0
13	Ronald Weyland	1331	L4	W18	L5	L12	1.0
14	Patrick Kirlin	1289	W5	L4	L6	L10	0.5
15	Nick Doulas	1262	L6	L10	L12	B(1)	1.0
16	Kirk Lundby	1242	L8	D11	L18	B(1)	1.0
17	John Hay	1200	L9	B(1)	L8	L11	1.0
18	M. Stubblefield	1635	—	L13	W16	L7	1.0

## Senior Tournament Needed

by Greg Nowak - Western V.P.

I believe the average age of the Clandestine Chess Club is about 46 years old with one junior. I believe the average age of the University Community Chess Club is about 54 with

no juniors. Finally, I think the Kalispel group of 6 has an average age of about 40, youngest maybe 30. This tells the tale of the future of over-the-board chess in Montana. The Juniors who play in just Senior events hardly ever go to clubs. The MCA should sponsor a Senior Championship for those aged 45 and older.

Capitol-Hill Action Tournament (Helena)								
#	Name	Rting	Rd 1	Rd 2	Rd 3	Rd 4	Rd 5	Tot
1	Brent Lashinski	1515	W13	W8	D2	W5	D4	4.0
2	Richard Cohen	1505	W14	W5	D1	W6	L3	3.5
3	Daniel McCourt	1719	W9	D6	L5	W10	W2	3.5
4	Kirk Lundby	1360	L8	W10	W11	W9	D1	3.5
5	Steven Scarff	1730	W11	L2	W3	L1	W8	3.0
6	Jesse G.-Durbin	1398	W12	D3	D8	L2	W9	3.0
7	Garrett Mindt	Unr	L10	W13	W12	L8	W11	3.0
8	John Pedry	1771	W4	L1	D6	W7	L5	2.5
9	Phillip Clark	1022	L3	W12	W10	L4	L6.0	2.0
10	Devon Rule	1389	W7	L4	L9	L3	W14	2.0
11	Melvin Drake	1178	L5	W14	L4	W13	L7	2.0
12	Dylan Allen	Unr	L6	L9	L7	B—	W13	2.0
13	Alan Cartwright	632	L1	L7	W14	L11	L12	1.0
14	Ethan Tilly	564	L2	L11	L13	H—	L10	0.5

Capitol-Hill Quick Chess (Helena)								
#	Name	Rting	Rd 1	Rd 2	Rd 3	Rd 4	Rd 5	Tot
1	John Pedry	1771	W6	L2	W7	W3	W4	4.0
2	Brent Lashinski	1515	W12	W1	W3	L4	W5	4.0
3	Richard Cohen	1505	W9	W5	L2	L1	W7	3.0
4	Sherwood Moore	1682	W10	L7	W9	W2	L1	3.0
5	Daniel McCourt	1719	W11	L3	W6	W7	L2	3.0
6	Kirk Lundby	1360	L1	W8	L5	W10	W12	3.0
7	Devon Rule	1389	W8	W4	L1	L5	L3	2.0
8	Charles Tilly	996	L7	L7	W10	L11	W9	2.0
9	Garrett Mindt	Unr	L3	W11	L4	W12	L8	2.0
10	Ethan Tilly	568	L4	W12	L8	L6	W11	2.0
11	Melvin Drake	1178	L5	L9	W12	W8	L10	2.0
12	Dylan Allen	Unr	L2	L10	L11	L9	L6	0.0

Capitol-Hill Blitz Tournament (Helena)														
#	Name	Rting	Rd 1	Rd 2	Rd 3	Rd 4	Rd 5	Rd 6	Rd 7	Rd 8	Rd 9	Rd 10	Rd 11	Tot
1	John Pedray	1771	W12	W6	W10	W9	W11	W7	W5	W3	W2	W4	W8	11.0
2	Brent Lashinski	1515	W10	W9	W11	W7	W5	L3	W8	W4	L1	X12	W6	9.0
3	Richard Cohen	1505	W9	W11	D7	L5	W8	W2	W4	L1	X12	W6	W10	8.5
4	Daniel McCourt	1719	W6	W10	W9	W11	W7	W5	L3	L2	W8	L1	X12	8.0
5	Kirk Lundby	1360	W11	W7	W8	W3	L2	L4	L1	X12	W6	W10	W9	8.0
6	Garrett Mindt	Unr	L4	L1	W12	W8	W10	W9	X11	W7	L5	L3	L2	6.0
7	Melvin Drake	1178	W8	L5	D3	L2	L4	L1	X12	L6	W10	L9	X11	4.5
8	Charles Tilly	996	L7	W12	L5	L6	L3	W10	L2	W9	L4	X11	L1	4.0
9	Ethan Tilly	564	L3	L2	L4	L1	W12	L6	W10	L8	X11	W7	L5	4.0
10	Dylan Allen	Unr	L2	L4	L1	W12	L6.5	L8	L9	X11	L7	L5	L3	2.0
11	Alan Cartwright	632	L5	L3	L2	L4	L1	Z12	F6	F10	F9	F8	F7	0.5
12	Dalton Allen	Unr	L1	L8	L6	L10	L9	Z11	F7	F5	F3	F2	F4	0.5





## UPCOMING EVENTS

### **December 7, 2002 UCC Blizzard Open (Bozeman)**

**Site:** 106E Strand Union Building, MSU-Bozeman. **Format:** 5 rd, SS. G/50 **EF:** \$10 at the site (\$15 if playing in both the Blizzard and the Dec. 8th Yuletide). If paying by mail, checks payable to University Chess Club, SUB Box 23, Bozeman, MT 59717 (must be received by 12.6.02). 19 & under half price. **Prizes:** Trophies for 1st, U1600, Unrated, Upset (non-provisional) **Registration:** Sat.: 8:30 - 8:45 am. **Rnds:** Sat.: 9 am, 10:45 am, 1:30 pm, 3:15 pm, 5 pm. **Contact:** Steve Scarff, sscarff@mailandnews.com **Sponsors:** University Chess Club and Office of Student Activities, MSU-Bozeman.

### **December 8, 2002 UCC Yuletide Open (Bozeman) - Quick Rated**

**Site:** 106E Strand Union Building, MSU-Bozeman. **Format:** 5 rd, SS. G/25 **EF:** \$10 at the site (\$15 if playing in both the Dec 7th Blizzard and the Yuletide). If paying by mail, checks payable to University Chess Club, SUB Box 23, Bozeman, MT 59717 (must be received by 12.6.02). 19 & under half price. **Prizes:** Chess merchandise/ gift certificates. **Registration:** Sun.: 9:30 - 9:45 am. **Rnds:** Sun.: 10 am, 11 am, 1 pm, 2 pm, 3 pm. **Contact:** Steve Scarff, sscarff@mailandnews.com **Sponsors:** University Chess Club and Office of Student Activities, MSU-Bozeman.

### **December 21, 2002 - Christmas Chess Party - Missoula - Clandestine Chess Club**

**Site:** Clandestine Chess Club, 125 W. Main. Missoula, MT. **Format:** Two Tourneys. Tourney #1: G/15 Unrated. 4 Rd SS., Tourney #2: G/7 Unrated. Dbl. RR. **E.F.:** \$10 for both, \$5 for juniors. Individual Tourneys: \$7 early, \$10 at door, Juniors \$3 less. **Prizes:** Prizes given for each tourney. Based on \$56 in entry fees, \$10, \$8, \$5. **Reg:** 12:30 - 12:45 **Rounds:** Tourney #1: 1:00 pm., 1:45, 2:15, 3:00, Tourney #2: Starts after tourney #1. **Contact:** Greg Nowak, Hellgate Station, P.O. Box 8572, Missoula, MT. 59807. or Clandestine Chess Club. **Extras:** Free Coffee and Cookies.

### **January 18, 19 2003 - January Thaw - Helena - (Montana Grand Prix Tourney)**

**Site:** Helena Chamber of Commerce, 225 Cruse Ave. **Format:** 5 rd, SS. G/90 **EF:** \$20 by Jan. 17, \$25 at the door, Juniors - half price. **Prizes:** Details of prizes and awards yet to be sorted out. **Registration:** Sat.: 10:30 - 10:40 am. **Rounds:** Sat: 11 am, 2:30 pm., 7 pm., Sun: 9 am., 12:30 pm. **Contact:** Mel Drake, 5950 Canyon Ferry Road, Helena, MT 59602, Phone 475.3481.

### **February 1-2, 2003 - Midwinter/ Groundhog Open (Bozeman)**

Probably same format as the UCC Blizzard and UCC Yuletide set for Dec. 7 and Dec 8, 2002

### **February 22 - 23, 2003 - Dave Collyer Open - Spokane**

### **March 15, 16 2003 - St. Paddy's Open (Billings - Montana Grand Prix Event)**

Details to be announced.

Montana Chess Association

David Duke  
P.O. Box 3052  
Billings, MT 59103



Upcoming Tournaments:

- Blizzard - Bozeman - Dec.7-8, 2002
- Xmas Chess Party - Msla - Dec.21,2002
- January Thaw - Helena - Jan 18-19, 2003
- Groundhog - Bozeman - Feb. 1-2, 2003
- Dave Collyer - Spokane - Feb. 22-23, 2003
- St. Paddy's - Billings - Mar.15-16, 2003
- Crocus - Missoula - April - TBA
- 68th MT. State Open - TBA