

MONTANA CHESS NEWS

NOV. 1990-FEB. 1991 VOLUME XVI-ISSUE 4

PHIL HEIKKINEN PULLS AHEAD IN GRAND PRIX

Helena's Phil Heikkinen has been very active, and very successful during the cold months. He tied for first at the Turkey Open in Missoula and in the top Quad at Bozeman, and won the action chess event in Bozeman and the Winter Open in Billings in January. All of this has enabled Phil to accumulate 67.68 Grand Prix Points to establish a strong lead over Zygmund Mayer, who has 46.89 points, and Paul Motta, who has 43.25 points. The second Grand Prix qualifying spot for the Closed State Championship appears to be a race between Mayer as Motta, as the next closest pursuer - Kip Stubberud with 20.75 points - is already qualified by virtue of being the defending State Champion.

NICK PAZDERIC TOP IMPROVER IN 1990

Missoula's Nick Pazderic, who recently departed for an indeterminate period of residency in Taiwan, was the most improved player in the state in 1990 by the measure of USCF rating gain. Nick's standing of 1897 in the 1990 annual list reflects a rise of 202 points over his 1989 annual list standing. Honorable mention goes to Roger LaVoie of Great Falls, who gained 168 points. Paul Motta had the next highest gain at 90 points, and it could be argued that those points over 2000 are harder to come by. Unfortunately for Paul, they aren't as hard to get rid of, and the next rating list will likely reflect that as some results from Bozeman and Reno, Nevada come in. The pursuit of the elusive 2200 plateau continues to frustrate all of the Experts in Montana and Wyoming. Powell's Steve Smith, who started the year at 2187 and got ever so close, has seen his fortunes wane, and his rating slide to 2149. Perhaps 1991 will be a better year!

JOHN KENNEDY IS VERY UPSETTING

Just ask Paul Motta! John Kennedy of Colstrip has won the biggest upset of the year for the second year in a row. Last year he knocked off Les Brennan with a differential of 403 points, but he outdid himself in 1990 by winning against Paul in the Southeast Sudden Death Open with a rating difference of 665 points. Congratulations again John!

NEW CONSTITUTION NEARS COMPLETION

The Constitution Revision Committee has just about completed it's work on drafting a revised document which will provide a basis for formalizing and strengthening some of the traditional activities of the Association. Paul Motta, Les Brennan, Sherwood Moore, Dennis Petrak, Bill Lynch and Kip Stubberud have studied and modified the language thru about 5 drafts. It is anticipated that the final draft will be ratified by the officers in mid-February so that the document can then be submitted to the resident members for a vote on adoption in a mailing accompanying the next issue of Montana Chess News. Every member should check the membership list on pages 7 and 8 to verify their expiration date and renew their membership if necessary before about the middle of March.

IDAHO VS MONTANA MATCH BREWING FOR LATE APRIL OR EARLY MAY

Paul Motta has been in touch with the Idaho Chess Association concerning a possible team match. Probable site Idaho Falls. See page 6 for additional information.

TURKEY OPEN

November 3-4, 1990

Arman Goplen of Kalispell and Don Gisselbeck of Missoula were the underdog heroes of the 1990 Turkey Open. Arman beat two Experts (Mike Jensen and Zygmund Mayer) to tie with Phil Heikkinen and Paul Motta with 4 points and a three-way share of the top prize money - \$50 each. While Don had to settle for a point and a half, his full point won him the biggest upset prize by handing Wyoming visitor John Carr a first round defeat (a difference of 525 rating points).

Douglas Hansen of East Glacier (recently relocated from New Mexico) won the \$30 prize for best under 1700, and Mike Culletto of Hamilton had a good tournament showing for a new player. His 2.5 points gave him a lock on the best under 1500 and a \$15 prize.

More than 20 players participated and this strong tournament drew 4 Experts and 4 Class A players. The tournament also saw Todd Sherwood (who recently moved to Missoula) play his first rated games. And, wouldn't you know, the round 3 pairing sheet showed Sherwood as white versus Moore as Black! Mike Culletto and Scott Kingdon of Hamilton also joined us for this tournament. Hope to see you again, fellows.

-Bill McBroom

RD2 BD5 Shughart-Culletto TWO

P1 Name	Rate	RD1	RD2	RD3	RD4	RD5	TOT
1 Phil Heikkinen	2069	W3	W13	D5	W2	D4	4.0
2 Paul Motta	2135	W17	W8	W6	L1	W7	4.0
3 Arman Goplen	1645	L1	W22	W19	W6	W5	4.0
4 Thad Suits	1907	D11	W15	W9	D5	D1	3.5
5 Zygmund Mayer	2062	W7	W19	D1	D4	L3	3.0
6 Mike Jensen	2000	W14	W20	L2	L3	W13	3.0
7 Doug Hansen	1625	L5	W21	W20	W8	L2	3.0
8 Romie Carpenter	1849	W22	L2	W12	L7	W14	3.0
9 Dave Shughart	1897	W16	D12	L4	D14	W11	3.0
10 Ron Erickson	1790	W12	D11	---	D18	W15	3.0
11 Sherwood Moore	1556	D4	D10	W15	D13	L9	2.5
12 Mike Culletto	UNR	L10	D9	L8	W21	W16	2.5
13 Kip Limesand	1705	W21	L1	W16	D11	L6	2.5
14 Gregg Ford	1621	L6	D18	W22	D9	L8	2.0
15 Todd Sherwood	UNR	X24	L4	L11	W19	L10	2.0
16 Ray Jorgenson	1553	L9	W17	L13	W20	L12	2.0
17 Dennis Petrak	1697	L2	L16	L18	W22	W21	2.0
18 John Carr	1846	L19	D14	W17	D10	WD	2.0
19 Don Gisselbeck	1321	W18	L5	L3	L15	D20	1.5
20 Carl Jacobs	1201	BYE	L6	L7	L16	D19	1.5
21 Scott Kingdon	UNR	L13	L7	W23	L12	L17	1.0
22 Lyle Petersen	1426	L8	L3	L14	L17	WD	0
23 Paul Barberich	1231	---	---	L21	---	---	0
24 Bob Phillips	1778	F15	WD	---	---	---	0

RD1 BD8 Gisselbeck-Carr FRENCH 1 e4 e6 2 d4
d5 3 Nc3 Bb4 4 e5 Ne7 5 Nf3 e5 6 a3 exd4 7 Qxd4
Nc6 8 Bb5 Qa5 9 Qxb4 Qxb4 10 axb4 0-0 11 Bxc6 N
xc6 12 b5 Ne7 13 0-0 Bd7 14 Be3 b6 15 Ra4 Nf5
16 Nd4 Nxe3 17 fxe3 f5 18 exf6 e.p. gxf6 19 Nc6
a5 20 e4 dxe4 21 Nxe4 f5 22 Nd6 Bxc6 23 bxc6 Rf
d8 24 Rd1 Rac8 25 Rc4 b5 26 Rc5 Rc7 27 Rd3 b4
28 Nb5 Rxd3 29 Nxd3 Rd1+ 30 Kf2 Kf7 31 Nb5 Rd8
32 Na7 Black Resigns. 1-0

KNIGHTS 1 e4 e5 2 Nf3 Nc3 3 Bc4 Nf6 4 Ng5 d5 5 exd5 Nxd5
6 Nxf7 Kxf7 7 Qf3+ Ke6 8 Nc3 Ne7 9 d4 g6 10 Bg5 Kd7 11 Nxd5 c6 12 Nxe7 Bxe7 13 dxe5 Qa5+
14 Bd2 Qxe5+ 15 Be3 Rf8 16 0-0-0+ Ke8 17 Qe2 Bf5 18 Rhel Rd8 19 Bg5 Bxg5+ 20 f4 Bxf4+
21 Kbl Rxd1+ 22 Qxd1 Be3 23 QD2 Bxc2+ 24 Qxc2 Rf4 25 Qb3 Drawn. 1/2-1/2

RD3 BD2 Mayer-
Heikkinen GROB 1 g4 d6 2 Bg2 Nc6 3 h3 e5 4 c4 g6 5 Nc3 h5 6 gxh5 Rxh5 7 d3 Bd7 8 e4 B
h6 9 Bxh6 Rxh6 10 Qd2 Rh5 11 Nd5 Nd4 12 Ne2 Nxe2 13 Qxe2 c6 14 Ne3 Qa5+ 15 Qd2 Qxd2+ 16
KXd2 Nf6 17 Bf3 Rh4 18 Ragl Ke7 19 Ng4 Rah8 20 c5 Nxc4 21 cxd6+ Kxd6 22 hxg4 Rxh1 23 Bx
h1 Bxg4 24 Bg2 Rh2 25 Ke3 Be6 26 a3 c5 27 Bf3 a5 28 Bd1 Rh3+ 29 Kd2 Rh2 30 Ke3 RH3+ 31
Kd2 c4 32 Be2 Rh2 33 Ke3 Rh3+ 34 Kd2 Rh2 35 Ke3 cxd3 36 Bxd3 Rh3+ 37 Ke2 Rh4 38 Ke3 Rh3+
39 f3 Rh2 40 Be2 Rh4 41 Rd1+ Kc7 42 Rcl+ Kd6 Drawn. 1/2-1/2

RD3 BD1 Motta-Jensen FRENCH
1 d4 d5 2 e4 e6 3 c4 Nf6 4 e5 Ne4 5 Bd3 Bb4+ 6 Kf1 f6 7 f3 Ng5 8 Bxg5 fxc5 9 Qa4+ Nc6
10 c5 g4 11 Bb5 Qg5 12 Qxb4 Qcl+ 13 Kf2 0-0 14 Bxc6 gxf3 15 gxf3 Rxf3+ 16 Nxf3 Qxh1 17
Bb5 Bd7 18 Nbd2 Qxa1 19 Bxd7 Kf7 20 Qxb7 Rf8 21 Kg3 h5 22 Qc6 h4+ 23 Kg4 Kg8 24 Qxe6+ K
h8 25 Qe7 Black Resigns. 1-0

RD4 BD4 Hansen-Carpenter MODERN DEFENSE 1 e4 g6 2 N
f3 Bg7 3 g3 c6 4 Bg2 d5 5 d3 dxe4 6 dxe4 Qxd1+ 7 Kxd1 Nf6 8 Nd2 0-0 9 c3 Rd8 10 Kc2 Nb
d7 11 Rel Ng4 12 h3 Nge5 13 Nb3 Nxf3 14 Bxf3 Ne5 15 Bg2 Nd3 16 RD1 Bxh3 17 Bxh3 Nxf2 18
Rxd8+ Rxd8 19 Bf1 Nxe4 20 g4 e5 21 Be3 b6 22 Bg2 Nf6 23 Bf3 e4 24 Be2 Nd5 25 Bg5 f6 26
Bg4 Ne3+ 27 Kbl c5 28 Bf2 Bh6 29 Bxe3 Bxe3 30 Kc2 Kg7 31 Rd1 Rxd1 32 Kxd1 f5 33 gxf5 gx
f5 34 Nal f4 35 Nc2 Bf2 36 Bg4 Kf6 37 Ke2 Bg3 38 Bh3 h5 39 Na3 Ke5 40 Nc4+ Kd5 41 Nd2 B
h4 42 Bf5 f3+ 43 Kf1 f2 44 Bxe4+ Ke5 45 Bf3 Bg5 46 Nc4+ 47 Bxh5 b5 48 Na5 Bc1 49 b3 Bb2
50 c4 bxc4 51 Nxc4 Bd4 52 Be2 Kd7 53 Na3 Kc6 54 Nc2 Bc3 55 Kxf2 Kb6 56 Ke3 Bf6 57 Ke4 B
g7 58 Kd5 Bb2 59 Kc4 Bc1 60 Bh5 Bb2 61 Ne3 Bd4 62 Nd5+ Kc6 63 Be8+ Kd6 64 b4 Bf2 65 b5
Black Resigns. 1-0

RD4 BD3 Jensen-Goplen TWO KNIGHT'S 1 e4 e5 2 Nf3 Nc6 3 Bc4 Nf6 4 O-O Bc5 5 d4 exd4 6 e5 d5 7 exf6 dxc4 8 Re1+ Be6 9 Ng5 Qd5 10 Nc3 Qf5 11 Nce4 O-O-O 12 Nxe6 fxe6 13 Nxc5 Qx c5 14 Rxe6 gxf6 15 Rxf6 h5 16 h4 Ne5 17 Rf5 Rdf8 18 Rg5 d3 19 Be3 Qd6 20 cxd3 Ng4 21 Rx g4 hxg4 22 Qxg4+ Kb8 23 Qxc4 Rfg8 24 Rac1 QD8 25 Bg5 Qc8 26 Bf4 Rh7 27 Bg5 Rg6 28 Qe4 R 7g7 29 Rxc7 Kxc7 30 Qe5+ Kd7 31 Qf5+ Re6 32 d4 Rxc5 33 hxg5 Ke8 34 Qh7 Qc1+ 35 Kh2 Qxg5 36 Qh8+ Kd7 37 Qh7+ Rd7 38 Qd3 Qh5+ 39 Qh3 Qxh3 40 Kxh3 Re7 41 f4 Re4 42 f5 Rd4 43 g4 K e7 44 g5 Rf4 45 f6+ Kf7 46 Kg3 RD4 47 Kf3 Rd2 48 Kf4 Kg6 49 Ke5 Re2+ 50 Kd6 Rxb7 51 Ke7 Re2+ 52 Kf8 RF2 53 Kg8 b5 54 a3 a5 55 White Resigns. 0-1

RD4 BD1 Heikkinen-Motta

REVERSE PIRC 1 Nf3 Nc6 2 g3 e5 3 d3 d5 4 Bg2 Be7 5 Nbd2 Be6 6 e4 d4 7 O-O Qd7 8 Nc4 f6 9 a4 O-O-O 10 Bd2 Bh3 11 Qe1 g5 12 b4 Rf8 13 b5 Nd8 14 Bb4 h5 15 Bxe7 Nxe7 16 Bxh3 Qxh3 17 a5 Ng6 18 Kh1 Nf4 19 Rg1 h4 20 Qf1 hxg3 21 fxg3 Qxf1 22 Raxf1 Ng6 23 b6 axb6 24 axb6 cxb6 25 Nxb6+ Nc7 26 Nd5+ Kc8 27 Nd2 Nc6 28 Nc4 Nge7 29 Nxf6 Rh6 Black's flag fell. 1-0

RD5 BD2 Motta-Hansen PIRC 1 d4 Nf6 2 Nc3 g6 3 e4 d6 4 Bc4 Bg7 5 Qe2 O-O 6 e5 dxe5 7 dxe5 Ng4 8 f4 Nh6 9 Be3 Bg4 10 Qf2 c6 11 Bxa7 Nbd7 12 h3 Be6 13 Bxe6 fxe6 14 Rd1 Qc7 15 Nf3 b6 16 Ng5 Qxa7 17 Nxe6 Bxe5 18 Nxf8 Rxf8 19 Qe3 Nf5 20 Qd3 Nc5 21 Qc4+ Kg7 22 fxe5 Nc3 23 Qe2 Nxd1 24 Kxd1 Qd7+ 25 Kc1 Qf5 26 Re1 Qg5+ 27 Qd2 Qxd2+ 28 Kxd2 Rf2+ 29 Re2 R f5 30 Ne4 Nxe4+ 31 Rxe4 Kf7 32 g4 Rf2+ 33 Kd3 Ke6 34 Re3 Kd5 35 c4+ Ke6 36 Kc3 Rf4 37 b4 h5 38 gxh5 gxh5 39 a4 h4 40 Kd3 Rf1 41 Re4 Rf3+ 42 Re3 Rxe3+ 43 Kxe3 Kxe5 44 a5 bxa5 45 bxa5 Kd6 46 Kf4 Kc7 47 Kg4 Kb7 48 Kxh4 Ka6 49 Kg4 Kxa5 50 h4 Black Resigns. 1-0

RD5 BD1 Heikkinene-Suits ENGLISH 1 c4 c5 2 Nc3 Nc6 3 g3 g6 4 Bg2 Bg7 5 e3 d6 6 Nge2 N f6 7 d4 cxd4 8 Nxd4 Nxd4 9 Qxd4 O-O 10 Qd2 Rb8 11 Rb1 Be6 12 b3 Qd7 13 O-O BH3 14 Bb2 B xg2 15 Kxg2 Rfe8 16 Rfd1 Rc5 17 h4 Rac8 18 Qe2 Qe6 19 e4 b6 20 a4 Rb8 Drawn. 1/2-1/2

BOZEMAN DOUBLE December 1-2, 1990

P1 Name	Rate	1	2	3	4	TOT
1 Phil Heikkinen	2071	x	1	1	0	2.0
2 James Loy	1886	0	x	1	1	2.0
3 Zygmund Mayer	2062	0	0	x	1	1.0
4 Paul Motta	2152	1	0	0	x	1.0
1 Steve Scarff	1656	x	1	1	1	3.0
2 Kip Limesand	1705	0	x	1	1	2.0
3 Dan Waters	UNR	0	0	x	1	1.0
4 Carl Jacobs	1152	0	0	0	x	0

P1 Name	Rate	R1	R2	R3	R4	R5	TOT
1 Phil Heikkinen	2071	W6	W2	W3	W5	W4	5.0
2 Zygmund Mayer	2062	W4	L1	W7	W3	W6	4.0
3 Paul Motta	2152	W7	W5	L1	L2	W9	3.0
4 Steve Scarff	1656	L2	W6	W8	W9	L1	3.0
5 Jim Loy	1886	W10	L3	W9	L1	W6	3.0
6 Wasyl Jarosz	1676	L1	L4	W10	W8	L2	2.0
7 Kip Limesand	1705	L3	W8	L2	W10	L5	2.0
8 Michael Long	1855	W9	L7	L4	L6	W10	2.0
9 Dan Waters	UNR	L8	W10	L5	L4	L3	1.0
10 Carl Jacobs	1152	L5	L9	L6	L7	L8	0

RD1 BD1 Motta-Limesand BDG-VIENNA 1 d4 d5 2 e4 dxe4 3 Nc3 Nf6 4 f3 Bf5 5 fxe4 Nx e4 6 Qf3 Nd6 7 Bf4 Bxc2 8 Bxd6 cxd6 9 Qx b7 Nd7 10 Bb5 Rc8 11 Nge2 Rc7 12 Qf3 e6 13 O-O Bg6 14 Nf4 Qf6 15 Qe3 Qg5 16 Rael Rxc3 17 Bxd7+ Kxd7 18 Qxc3 Be7 19 Rc1 Rd8 20 Qc6++. 1-0

1 c4 Nf6 2 Nf3 e5 3 g3 Nc6 4 Bg2 Bc5 5 e3 d6 6 a3 a5 7 Nge2 Be6 8 d4 exd4 9 exd4 Qd7 10 dxc5 Bh3 11 O-O Ne5 12 Nf4 Bxg2 13 Nxc2 h5 14 Bg5 Nfg4 15 f3 Qf5 16 fxg4 Qxg5 17 Rf5 Q h6 18 Rxh5 O-O-O 19 Rxh6 Rxh6 20 g5 Rh7 21 cxd6 Rxd6 22 Qe2 f6 23 gxf6 gxf6 24 Rd1 Re6 25 Nf4 Rc6 26 Ncd5 Rxc4 27 Nxf6 Re7 28 Nfd5 Re8 29 Ng6 Time. 1-0

RD2 BD2 Heikkinen-Mayer ENGLISH

RR Motta-Heikkinene BENONI 1 d4 Nf6 2 Nc3 c5 3 d5 d6 4 e4 g6 5 f4 Bg7 6 Bb5+ Bd7 7 e5 dxe5 8 fx e5 Ng8 9 Nf3 Bxb5 10 Nxb5 Nh6 11 Bf4 Qa5+ 12 Nc3 Nd7 13 O-O O-O 14 Qd2 Ng4 15 Rael f6 16 exf6 ex f6 17 Re7 Rad8 18 d6 c4 19 Nd4 Nc5 20 Qe2 Ne5 21 Bxe5 fxe5 22 Qxc4+ Kh8 23 Rff7 Rxf7 24 Qxf7 Rg8 25 Re8 Black Resigns. 1-0

RR Loy-Mayer

LARSEN 1 b3 c5 2 Bb2 Nf6 3 e3 Nc6 4 c4 d6 5 Nf3 Bf5 6 Be2 h6 7 O-O e6 8 d4 Be7 9 d5 Nb4 10 h3 N a6 11 Bd3 Bxd3 12 Qxd3 e5 13 Nc3 Qd7 14 h3 O-O 15 e4 Na5 16 Ne2 Rae8 17 g4 Nf6 18 Kh2 N c7 19 Ng3 b5 20 Nf5 bxc4 21 bxc4 Bd8 22 R g1 Nh7 23 Bc1 Ng5 24 h4 Nxf3+ 25 Qxf3 Kh7 26 g5 hxg5 27 Qh5+ Kg8 28 Bxg5 Bxg5 29 Rx g5 g6 30 Qh6 Black Resigns. 1-0

RR Scarff-Limesand MODERN DEFENSE 1 d4 g6 2 e4 Bg7 3 Bc4 Nh6 4 Bf4 d6 5 Qf3 O-O 6 Nc3 Nc6 7 Nge2 Nb4 8 O-O-O a5 9 h3 Be6 10 d5 Bd7 11 g4 Kh8 12 g5 Ng8 13 h4 e6 14 h5 Ne7 15 a3 exd5 16 exd5 Na6 17 hxg6 fx g6 18 Rh2 Bxc3 19 Qxc3+ Kg8 20 Rdh1 Rf7 21 Qd2 Nc5 22 Nc3 Nf5 23 Re1 b6 24 Nb5 N g7 25 Nd4 Nh5 26 Nc6 Bxc6 27 dxc6 Qf8 28 Bxf7+ Qxf7 29 Be3 Qa2 30 Qd4 Re8 31 Rh4 Black Resigns. 1-0

Montana - Wyoming Match
September 15 and 16, 1990
Report by Phil Heikkinen

After initial plans for as many as eight or ten players from each state, we found ourselves pared down to teams of four due to the factors of distance, other commitments, and of course money. Nevertheless, we all seemed to enjoy the match and to see it as worth repeating next year. I was pleased with the accommodations worked out by Paul Motta.

The match format was to play two-game mini-matches of same-numbered Boards on Saturday, then to play two more games on Sunday of Board 1 vs. 2 and 3 vs. 4. Wyoming players were White in even-numbered rounds. The match was saved for Montana by Hardy Grover and Kip Limesand with identical 3-1 scores against Harold Moneyhun and Murray Strong, as Paul and I stumbled to 3.5-5.5 against Ron Matous and Harold Moyer.

Round 1 MT 2 - WY 2

As Black in a Dutch Stonewall against Grover's solid variation of the English, Moneyhun drops his Queen on the critical square e6 to a Bishop pin. Early on, Limesand lures Strong's pawns forward by generously offering tempos, then finally picks them off in the endgame with some tactical help. Against Moyer's French, Motta can't build an initiative; then, seeking a perpetual check, he drops a Rook when he overlooks the interposition of a Knight. As White in a Dragon, Heikkinen loses a two-pawns-up-endgame by playing on automatic pilot against Matous's grim defense and neglecting to count tempos in a Rook and Pawn endgame.

Limesand - Strong (Dutch Stonewall):

1 d4 f5 2 Bf4 d5 3 e3 e6 4 c4 c6 5 Nd2 Nf6 6 Bg5 Bd6 7 Rc1 h6
8 Bxf6 Qxf6 9 Qh5 g6 10 Qd1 Nd7 11 Ngf3 Nf8 12 Qb3 g5 13 g3 Ng6
14 Nb1 Rh7 15 Bd3 e5 16 dxe5 17 Nxe5 Qxe5 18 cxd5 cxd5 19 0-0 Re7
20 Qc3 f4 21 Qxe5 Bxe5 22 exf4 gxf4 23 Rc2 Bh3 24 Rfc1 f3 25 b3
Kf7 26 Nd2 Bg4 27 Bf1 Rae8 28 h3 Bf5 29 Rc5 Be4 30 Bb5 Rg8
[DIAGRAM] (Until now, Black has maintained reasonable chances; but this loses material to the threat of Bc4+. 30...Rf8 intending Kg7 would maintain threats on the kingside. If 31 Rel then ...Bd6.)
31 Nxe4 a6 (31...Bd4 is met by 32 Rc7 with Bc4+ hanging in the air. The same Rook move follows 31...Bb2 32 R1c2 Ba3.) 32 Bxa6
bxa6 33 Rxd5 Bb2 34 Rc2 Rxe5 35 Rxb2 Rel+ 36 Kh2 Rge8 37 Rf5+ Kg6
38 Rxf3 R8e2 39 Rxe2 Rxe2 40 a4 Rb2 41 Kg2 h5 42 Rd3 (1-0)

Round 2 MT 3.5 - WY .5 CUMULATIVE SCORE: MT 5.5 - WY 2.5

This round provides the final margin of victory, as Montana takes the lead for good with the Black pieces. Three of the games could have gone either way. In the fourth, Limesand develops simply against a c4/e4 English, and apparently (I had no complete game score) wins material by penetrating quickly on the Queenside. Grover works up a winning attack after his own King narrowly escapes early disaster. Against Moyer, Motta plays imaginatively and accurately with an Elephant Gambit, only to fall into a

repetition of position in time pressure. Matous builds a promising initiative with his Colle; but when he tries to cash in tactically, Heikkinen is able to counterattack decisively.

Moneyhun - Grover (Modern Defense)

1 f4 g6 2 Nf3 Bg7 3 e3 d6 4 d4 Bf5 5 Nd2 Nd7 6 e4 Bg4 7 h3 Bxf3
8 Nxf3 (A unique transposition into a kind of Austrian Attack) e5
9 Bc4 exd4 10 0-0 c5 11 Re1 Qc7 12 Ng5 [DIAGRAM] (White has
developed a nasty attack. 12...Nh6 looks most natural, when either
13 Bxf7+ Nxf7 14 Ne6 Qc6 15 Nxg7+ Kd8 with thoughts of Kb7, or 13
e5 0-0 14 e6 Nf6 15 exf7 Rxf7 look playable.) h6 13 Bxf7+ (13 Nxf7
Rh7 14 Qg4 looks like enough to win.) Ke7 14 Ne6 Qb6 15 Bxg8 Raxg8
16 Nxg7 Rxg7 17 b3 Rf8 18 f5 g5 19 h4 Ne5 20 hxg5 hxg5 21 Rf1 Kf6
22 Qh5 Nf7 23 Bd2 Rh8 (Black has put the finishing touch on a
complete turnaround.) 24 Qe2 Ne5 25 Qd1 g4 26 Bf4 d3 27 Bxe5 dxe5
28 g3 Rgh7 29 Kf2 Rh2+ (0-1)

Moye - Motta (Elephant Gambit)

1 e4 e5 2 Nf3 d5 3 Nxe5 dxe4 4 Bc4 Qg5 5 d4 Qxg2 6 Bxf7+ Ke7 7 Rf1
Nd7 8 Bc4 Nf6 9 Bf4 Nb6 10 Na3 Bh3 11 Be2 Nbd5 12 Qd2 Nxf4 13 Qxf4
g5 14 Qd2 Qxh2 15 Qb4+ Ke6 16 Bc4+ Kf5 17 Qb3 Re8 18 0-0-0 Bxf1
19 Rxf1 Bd6 20 f3 Qf4+ 21 Kbl Bxe5 22 fxe4+ Nxe4 23 Rxf4+ Bxf4
24 Bd3 Kf6 25 Bxe4 Rxe4 26 c3 [DIAGRAM] (This position is winning
for Black with a material and positional advantage, though in
severe time pressure it can be next to impossible to overcome the
technical challenges.) 26...b6 followed by Rhe8 will help to
consolidate, push the passers, and cause White to worry about King
safety. Once Black's King arrives in the vicinity of g3, the game
ought to be over. Meanwhile, the White King is out of play.) Re1+
27 Kc2 Rhe8 28 Qxb7 g4 29 Nc4 h5 (R8e2+ looks best, followed by
Kg5.) 30 Qb5 Kg6 (Again R8e2+ first.) 31 Ne5+ R8xe5 32 dxe5 Rxe5
33 Qb8 g3 34 Qg8+ Kf5 35 Kd1 Ke4 36 Ke2 Kf5+ 37 Kf1 Ke4 38 Kg2 Kf5
39 Qf2+ Kg4 40 Qg7+ Rg5 41 Qd7+ Rf5 42 Qg7+ Bg5 43 Qd4+ (.5-.5)

Matous - Heikkinen (Colle System)

1 d4 Nf6 2 Nf3 c5 3 e3 g6 4 Bd3 Bg7 5 Nbd2 0-0 6 0-0 b6 7 c3 Bb7
8 dxc5 bxc5 9 e4 Qc7 10 Re1 Nc6 11 Qe2 a5 12 a4 d6 13 Nc4 Nd7 14
Bf4 Ba6 (Impatient in the face of the threatened e4-e5, I decide
to force matters, though Ron's next move surprises me.) 15 Nxd6
Bxd3 16 Qxd3 exd6 17 Bxd6 Nde5 18 Nxe5 Nxe5 19 Qd5 Qb6 [DIAGRAM]
20 Bxf8 (20 Bxc5 Qxb2 21 Bxf8 Rxf8 22 Qxa5 (or 22 c4 Nd3) Nd3
gives White two passed pawns, though Black is very active. The
game continuation turns out poorly, especially after Black's pawn
reaches c4.) Rxf8 21 Rad1 c4 22 Kf1 Nd3 23 Re2 Nf4 24 Qxc4 Nxe2 25
Qxe2 Rb8 26 Qc4 Qxb2 27 Rd7 Qc1+ 28 Ke2 Rb2+ 29 Kf3 Qxc3+ 30 Qd3
Qf6+ 31 Kg4 h5+ 32 Kg3.Qxf2+ (0-1)

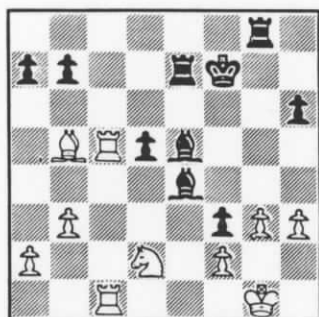
Round 3 MT 2 - WY 2 CUMULATIVE SCORE: MT 7.5 - WY 4.5

Strong overlooks the loss of a piece against Grover in a Symmetrical English when the center opens up. Limesand and Moneyhun concoct a complicated middlegame out of a London System; in a melee, Kip overlooks that he could win a piece, and instead finds himself squashed after losing the only pawn holding back Black's center. In a Blackmar-Diemer Gambit, Motta catches

Matous with a distinct improvement over a previous encounter in the same variation, and Ron can't quite slip off the hook. Moye outplays Heikkinen in a King's Indian middlegame when White loses the thread, then he survives wild time-scramble counterplay.

Round 4 MT 2 - WY 2 FINAL SCORE: MT 9.5 - WY 6.5

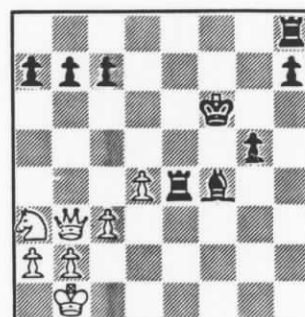
Grover's early initiative against an English-style setup dissipates into an early endgame which keeps returning to even positions until Strong nurses home the last Pawn on the board with Hardy's King and Rook lured away. Against a Bird's Opening, Limesand lines up his heavy pieces on the half-open b-file, and after Moneyhun makes positional concessions, explodes with the decisive sprint of his c-pawn to e1. Matous and Motta maneuver in an even Slav Meran until Paul misfires to give up the exchange without compensation. In another King's Indian between Moye and Heikkinen, Black wins again as Harold sheds a pawn in a lively Taimanov variation but can never find enough compensation.



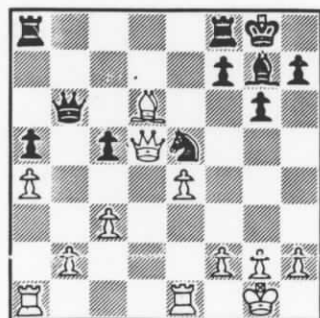
Limesand-Strong
after 30...Rg8



Moneyhun-Grover
after 12 Ng5



Moye-Motta
after 26 c3



Matous-Heikkinen
after 19...Qb6

IDAHO MATCH continued: The proposed format involves a three round match played on a Saturday, with two games between opposite boards plus one game against the next higher or lower board. Each state will attempt to have 16 players including 4 over 2000 plus 3 each in Class A, B, C, and D/E. Spots on the Montana Team are open to anyone who is interested in playing and will be reserved for those players who first contact Paul Motta, P.O. Box 155, Ennis, MT 59729 indicating an intention to participate. The limitations on number of players in each class are not ironclad, but every effort will be made to try to create pairings of opponents who are rated within 100 points of each other.

56TH MONTANA OPEN: Late News - Playing site will be Room 275 in the Student Union Building, Montana State University Campus. 5 Round Swiss: 11:00am, 6:00pm; 10:00am, 5:30pm; 9:30am. Entry fee = \$15 prior to 5/23, \$20 at site 10:00-10:45am at site on May 25. MCA Business Meeting - 5:00pm Saturday, May 25. State Speed Chess Championship Tournament 4:15-5:15 Sunday, May 26; registration 4:00-4:15pm, Entry = \$5. Efforts are currently underway to organize and conduct scholastic tournaments in six general regions throughout the State. The winners of these regional events will be invited to participate in a High School Championship Round Robin to be run concurrently with the Montana Open. Direct inquiries to Paul Motta.

Montana Chess Association Name	Members Street Address	City	ST	Zip	January 30, 1991 MCAEXP Rating	Ratio
Barry Anderson	314 S. 9th St.	Livingston	MT	59047	9004	1594
John P. Baldwin	5213 E. Saquaro Cir.	Phoenix	AZ	85044	9102	1918
John R. Barto	2620 2nd Ave. S.	Great Falls	MT	59405	9999	1389
Paul Berberich	U	U	MT	59000	9100	1231
Jason Bird	501 N. Central Ave. #11	Sidney	MT	59270	9103	1106
Ryan P. Boehler	103 9th Ave. NW	Sidney	MT	59270	9006	1127
Leslie Brennan	P.O. Box #2404	Colstrip	MT	59323	9102	1771
Ronnie G. Carpenter	1105 Haaland #18	Missoula	MT	59802	9104	1849
John B. Carr	Box 1323	Jackson	WY	83001	9106	1846
Chess Horizons Editor	10 Green Meadows Dr.	N. Billerica	MA	1862	9999	0
Renner Cleaverger	P.O. Box 41	Wilson	MT	59761	9010	1477
Colo State Chess Assn.	P.O. Box #4919	Boulder	CO	80306	9999	0
Kenneth C. Cook, Jr.	6640 River Rd.	Bozeman	MT	59715	9110	1379
Chad Couture	310 32nd Ave. NW	Sidney	MT	59270	9103	1453
J.G. White Dot/Pub. Library	325 Superior Ave.	Cleveland	OH	44114	9999	0
Lawrence W. Dunkin	3325 2nd Ave. North	Great Falls	MT	59401	9105	1430
Ron Erickson	3250 Pattee Canyon Dr.	Missoula	MT	59803	9105	1790
Brian Fenlason	416 Henry Dr.	Belgrade	MT	59714	9010	1103
Gregg J. Ford	233 N. Travois	Missoula	MT	59801	9011	1621
David W. Gentry	314 N. Hoffman	Belgrade	MT	59714	9010	1126
Donald Gisselbeck	10455 Pt. Six Rd.	Missoula	MT	59802	9111	1321
Thomas C. Gluick	10 Parsons Drive	Missoula	MT	59802	9005	1501
Arman D. Goolen	1708 1st Ave. W. Apt. C	Kalispell	MT	59901	9110	1645
William H. Greer	P.O. Box #293	Ashland	MT	59003	9005	1893
Gerald L. Griffin	Star Route, Box 120	West Yellowstone	MT	59758	9004	1741
Hardy Grover	410 W. Garfield	Bozeman	MT	59715	9103	1426
Richie L. Harris	4640 Parent	Missoula	MT	59802	9113	1427
Philip L. Heikkinen	729 9th Ave.	Helena	MT	59601	9105	2050
Duane H. Hildenstab	2995 Prospect #6	Helena	MT	59601	9106	1630
Iowa Chess En Passant	863 13th St. SE	Mason City	IA	50401	8905	0
Carl C. Jacobs	Sula Ranger Station	Sula	MT	59871	9102	1201
James Jacobs	805 N. Central	Sidney	MT	59270	9003	1618
Kirk Jacobs	805 N. Central Ave.	Sidney	MT	59270	9103	1325
Wasyl Jarosz	2108 Highland Ct.	Bozeman	MT	59715	9112	1676
J. Michael Jensen	3714 Creekwood	Missoula	MT	59802	9111	2006
Ray E. Jorgenson	117 Camas Prairie Rt.	Plains	MT	59859	9111	1553
John Kennedy	P.O. Box #2307	Colstrip	MT	59323	9103	1450
Roger LaVoie	264 Washington Blvd.	Great Falls	MT	59404	9010	1445
John H. Leitel	208 W. 2nd	Goodland	KS	67735	9110	1824
Billinos Family Library	510 N. Broadway	Billings	MT	59101	9999	0
Kip Limesand	120 S. 9TH	Bozeman	MT	59715	9106	1697
Douglas A. Logan	604 53rd St. S.	Great Falls	MT	59405	9202	1436
Mike Lorenz	Rt. 1, Box 3700	Sidney	MT	59270	9103	1129
James R. Lov	1104 S. Montana #H-7	Bozeman	MT	59715	9005	1867
William M. Lynch 652-2063	4245 Palisades Park Dr.	Billings	MT	59106	9105	1911
James Macorian	1225 North 46th St.	Lincoln	NE	68503	9109	1910
Mike Mamary	#17149 SNCC P.O. Box 19100	Jean	NV	89026	9104	1098
David E. Marriotti	P.O. Box 1014	Colstrip	MT	59323	9012	1980
Ronald A. Matous	Box 102	Kelly	WY	83011	9004	1166
Eriel Mayer	P.O. Box 272	Livingston	MT	59047	9101	2062
Zyomond Mayer	P.O. Box 272	Livingston	MT	59047	9112	2062
William McBrook	2321 Raymond	Missoula	MT	59802	9104	1695
Daniel J. McCourt	608 W. Central	Missoula	MT	59802	9011	1750
David McDonald	P.O. Box #265	Sidney	MT	59270	9003	1430
Robert A. McKean	1311 11 St.	Havre	MT	59501	9105	1758
Robert S. Melouist	Box 805	Havre	MT	59501	9105	1033
Frank E. Miller	204 6th St. SW	Great Falls	MT	59404	9010	1563
Bob Mitchell	105 Riverview 6W	Great Falls	MT	59404	9106	1465
Harold Moneyhun	P.O. Box 6207	Sheridan	WY	82801	9004	1556
Sherwood Moore	453 Minnesota	Missoula	MT	59802	9111	2131
Paul S. Motta	P.O. Box #155	Ennis	MT	59729	9105	0
NDCA News	1119 S. 9th #408	Bismarck	ND	58504	8905	1336
Shane Noble	2107 Ash St.	Billings	MT	59101	9101	1545
B. K. Parekh	2832 Chester Ct.	Billings	MT	59102	9101	1897
Nick L. Pazderic	#7-1, Lane 193, Chinowu Rd.	Taichung 400	OS	99999	9204	1426
Lyle I. Petersen	P.O. Box #146	Paradise	MT	59856	9004	1685
Dennis F. Petrak	1909 Colorado Ave.	Black Eagle	MT	59414	9111	1778
Robert L. Phillips	717 Cooper	Missoula	MT	59801	9005	1377
Donald M. Price	1615 Alder Court	Bozeman	MT	59715	9104	1850
Tom Purser - BDG World	P.O. Box 7363	Warner Robins	GA	31095	9104	1700
Chad Q. Robinson	939 N. 24th St. - Bsmt.	Billings	MT	59101	9103	1636
Steven R. Scarff	1012 W. Koch	Bozeman	MT	59715	9112	1208
John Schmoll	Box 359	Colstrip	MT	59323	9103	9799
T. J. Schwartz	B10 Hilltop Estates	Sidney	MT	59270	9103	1861
Jim Shroyer	P.O. Box #1990	Colstrip	MT	59323	9007	1949
David W. Shuphart	359 Marin Lane	Florence	MT	59833	9104	0
Craig Skinner	P.O. Box 60	Casper	WY	82602	9999	0

Montana Chess Association Name	Members Street Address	City	ST	January 30, 1991		
				Zid	MCAEXP	Rating
Steve Smith	528 Ave. G.	Powell	WY	82435	9009	2149
Chris Sooper	P.O. Box 335	Malta	MT	59538	9004	1629
Daron Spicher	Box 23	Jocolin	MT	59531	9005	1271
Darren Clifford Stacey	1206 Hiawatha	Helena	MT	59601	9105	1834
Murray Randel Strong	P.O. Box 122	Pinedale	WY	82941	9110	1457
Kid H. Stubberud 493-7903	1805 9th Ave.	Helena	MT	59601	9106	2101
Richard L. Stuckey	304 32nd St. S.	Great Falls	MT	59405	9110	1213
Seth Stuckey	304 32nd St. S.	Great Falls	MT	59405	9110	922
Thad Suits	3601 1st Ave. N.	Great Falls	MT	59401	9111	1907
Ervin J. Suko	612 S. 32nd St.	Billings	MT	59101	9101	1050
Richard Suko	841 Washington	Billings	MT	59101	9101	1075
Stewart Q. Sutton	1705 Filmore	Caldwell	ID	83605	9007	2107
Robert B. Tanner	P.O. Box #613	Salt Lake City	UT	84110	9007	2142
Charles Thiel	Rt. 1, Box 3245	Sidney	MT	59270	9103	1332
John Charles Thompson	301 Stewart Court N.	Billings	MT	59105	9101	2200
Christian T. To	5164 Anton Drive	Madison	WI	53719	9005	1833
Jerry Tripps	1812 9th Ave. SE	Mandan	ND	58554	9101	2104
Urminka	P.O. Box 1323	Kapaa, Kauai	HI	96746	9102	1803
U.S. Chess Federation	186 Rt. 9W	New Windsor	NY	12550	9999	0
Charles G. Williams	902 Jackson St.	Billings	MT	59101	9101	1205
Calvin Wipf	714 18th Ave. S.	Faroo	ND	58102	9003	1829
Steve Yockim	1049 Safflower	Sidney	MT	59270	9103	1484
Zach Yockim	1049 Safflower	Sidney	MT	59270	9103	1136



MCAEXP=YRMO of expiration of MCA membership. Resident members should check their date and be sure to renew before the end of the month necessary in order to be assured of being eligible to vote on the new Constitution. Ratings listed are from the annual list printed in the January issue of Chess Life for all players so listed.

FEBRUARY 16-17, 1991: VALENTINE OPEN ### Room 362, Social Science Bldg., U of MT Campus, Missoula, MT 59812. 5 Round Swiss: 9:30am, 2:00pm, 7:00pm; 9:00am, 2:00pm. 40 moves / 2 hours, 20 moves / hour. Entry fee = \$8 advance, \$10 at site 8:00-9:00am Feb. 16. Prizes: Trophies - 1st, 2nd, 3rd and Biggest Upset. Sponsor - University-Community Chess Club / Daniel McCourt, 608 West Central, Missoula, MT 59801. 406-721-2706

APRIL 6-7, 1991: CROCUS OPEN ### Room 362, Social Science Bldg., U of MT campus, Missoula MT, 59812. 5 Round Swiss: 9:30am, 2:00pm, 7:00pm; 9:00am, 2:00pm. 40 moves / 2 hours, 20 moves / hour. Entry fee = \$8 advance, \$10 at site 8:00-9:00am April 6. Prizes: Trophies - 1st, 2nd, 3rd; Medals - Best under 1700, 1500, 1300. Sponsor - University-Community Chess Club / Sherwood Moore, 453 Minnesota, Missoula, MT 59802. 406-728-1695

MAY 25-27, 1991: 56TH MONTANA OPEN ### MSU Campus, Bozeman, MT 59717. Sponsor - Montana Chess Association. Details to follow. Top three Montana finishers qualify for the State Closed Championship Playoff.

FIRST CLASS
PRESORTED

Thad Suits
3601 1st Ave. N.
Great Falls MT 59401
12475278 1907 9111

Billings, Montana 59106
4245 Palisades Park Dr.
Editor, Secretary/Treasurer
William M. Lynch

\$3/yr Junior \$50/yr Patron
Membership = \$6/yr Regular
by Education & Competition
Promoting Chess Excellence
U.S. CHESS FEDERATION
an affiliate of the
MONTANA CHESS ASSOCIATION
published by the
MONTANA CHESS NEWS
#####

