

Editor - Les Brennan, P.O. Box 2404
Colstrip, MT 59323 (406) 748-2154

MONTANA CHESS NEWS

Montana Chess News is published by the MONTANA CHESS ASSOCIATION, an affiliate of the U. S. CHESS FEDERATION
Promoting Chess Excellence by Education and Competition
Membership / Subscription = \$6 / yr regular, \$3 / yr junior

**J. MICHAEL JENSEN
WINS 1994 MONTANA STATE OPEN
& UCCC CLUB CHAMPIONSHIP**

**SKOVRON WINS MONTANA ACTION AND QUICK
CHESS CHAMPIONSHIPS**

Z. MAYER WINS MONTANA BLITZ CHAMPIONSHIP

1994 MONTANA STATE
ACTION AND QUICK CHESS
CHAMPION

**JIM
SKOVRON**



1994 MONTANA STATE
BLITZ CHESS
CHAMPION

**ZYGMOND
MAYER**



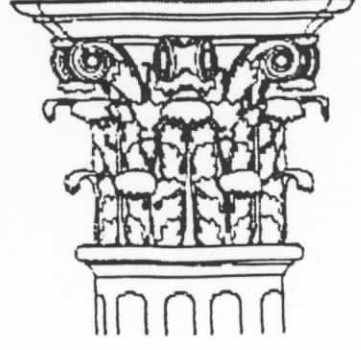
1994 MONTANA STATE
SENIOR CHESS
CHAMPION

**JOHN C.
THOMPSON**



1994 MONTANA STATE
GRAND PRIX
CHAMPION

**JAN
JOHANSSON**



What's New

MCA BUSINESS MEETING: Zygmund Mayer brought the meeting to order at 9:00A.M., 5/28/94. The first issue brought up was the matter of a petition to officially change the month of the State Open to June in order to avoid conflict with Mother's Day, Universities graduation ceremonies and Memorial Day weekend. After some discussion, this was voted down and several other similar ideas were offered, with a majority finally endorsing the idea of planning all future Montana State Opens for the weekend before the Memorial Day weekend.

The MCA treasury report was not presented, mainly because there wasn't enough time, but for the benefit of those wishing to know the raw details, MCA had \$870.00 at the 1993 State Open and \$1098.00 at the 1994 State Open. MCA membership bounces around 80 paying members average, and the membership dues provide about \$480.00/yr. Each newsletter costs about \$70.00 (\$29.00 stamps [about 100 newsletters go out, we recently gained 12 new members, so the figures are never really static], \$28.50 printing costs and about \$10.00 personal expenses - gas money, etc. I have the newsletters printed up in Miles City.) Six newsletters cost about \$420.00, so MCA dues cover the cost of the newsletters (if, of course, everyone remains up-to-date.) and a little more. The State Open generates about \$200-300 for the treasury.

The second issue discussed was time controls used in MCA Grand Prix events, resulting in a majority of those present voting to require MCA Grand Prix events to have a time control no faster than 30/90, G/1.

MCA officers were then elected: President: David Duke, Vice President: Jim Skovron, Eastern VP: Paul Arnot, Western VP: Michael Jensen, Secretary/Treasurer: Les Brennan.

Next, Michael Long offered a new idea for the format of the State Closed, to wit: a ten man Swiss. The majority of those present were enamored of the thought and voted it in. And that's all there was time for. Whew!

MEMBERS' FORUM: Outré! That is the reaction some members are having to the news of the new State Closed format. If you would like to talk to the members about what you feel will or won't work regarding the State Closed, or any other MCA matter, please feel free to use the newsletter. Any letters addressed to MCA membership (absent of offensive language) will be included in a section called "Members' Forum". Please try to keep letters reasonable in length.

FROM THE PRESIDENT: Dear members, the MCA Board of Directors wants your opinion. Next year's Montana State Closed will be expanded from a six person round-robin to a ten person Swiss. The membership present at the annual business meeting decided that the MCA board members should determine how to fill the four newly created positions.

The present system of qualifying for the Closed is as follows:

1. The reigning State Champion is automatically seeded.
2. The top two finishers in the MCA Grand Prix are seeded.
3. The top three Montana resident finishers in the State Open are seeded.

Since there will now be four new seeds, one solution would be to seed the State Champion, the top four MCA Grand Prix finishers and the top five finishers from the State Open. Another solution would be to emphasize MCA Grand Prix participation by seeding the State Champion, the top five MCA Grand Prix finishers and the top four finishers from the State Open.

The Board of Directors will vote on August 14, 1994 (The week before the first MCA Grand Prix tournament in Billings). We welcome your input, including any new and creative ideas on how to qualify the four new places in the Montana State Closed. - David Duke

Wanna call it a



draw?

'94 MT ACTION CHESS CHAMPIONSHIP

NAME	RTG	1	2	3	4	5	6	7	TOT
1 Skovron	1809	W8	W3	L2	W4	W6	W9	W5	6
2 Z. Mayer	2017	W4	W7	W1	L3	W8	D5	X-	5.5
McKenna	1759	W9	L1	W6	W2	W4	W8	F-	5
4 D. Duke	1758	L2	W9	W7	L1	L3	W6	W8	4
5 Hansen	1720	H-	H-	H-	H-	W9	D2	L1	3.5
6 Bridges	1413	L7	W8	L3	W9	L1	L4	W9	3
7 Suits	1949	W6	L2	L4	W8	U-	U-	U-	2
8 E. Mayer	1216	L1	L6	W9	L7	L2	L3	L4	1
9 Doulas	1142	L3	L4	L8	L6	L5	L1	L6	0

'94 MT QUICK CHESS CHAMPIONSHIP

NAME	RTG	1	2	3	4	5	6	7	TOT
1 Skovron	1892	W6	W5	W3	D4	B-	D2	W7	5
2 Z. Mayer	2028	W7	W6	W5	L3	W4	D1	B-	4.5
3 D. Duke	1430	B-	W4	L1	W2	W7	W6	L5	4
4 Hansen	1720	W5	L3	B-	D1	L2	W7	W6	3.5
5 Bridges	1413	L4	L1	L2	W7	W6	B-	W3	3
6 E. Mayer	1216	L1	L2	W7	B-	L5	L3	L4	1
7 Doulas	1142	L2	B-	L6	L5	L3	L4	L1	0

'94 BLITZ CHESS CHAMPIONSHIP

NAME	RTG	1	2	3	4	5	6	7	TOT
1 Z. Mayer	2017	W5	W8	W4	W3	W7	W6	W2	7
2 Skovron	1809	W7	W6	L3	W5	W8	W4	L1	5
D. Duke	1758	W6	L4	W2	L1	W5	W7	W8	5
4 Suits	1949	W8	W3	L1	W7	W6	L2	L5	4
5 Bridges	1413	L1	D7	W6	L2	L3	W8	W4	3.5
6 Hansen	1720	L3	L2	L5	W8	L4	L1	W7	2
7 E. Mayer	1216	L2	D5	W8	L4	L1	L3	L6	1.5
8 Doulas	1142	L4	L1	L7	L6	L2	L5	L3	0

'94 UCCC CLUB CHAMPIONSHIP CHAMPIONSHIP SECTION

NAME / RTG	1	2	3	4	5	6	7	TOT
1 Jensen 1935		1	0	U	1	1	1	4
2 Carpenter 1852	0		1	0	1	1	U	3
3 Moore 1653	1	0		1	1	0	U	3
4 McCourt 1734	U	1	0		U	1	U	2
5 McBroom 1615	0	0	0	U		1	U	1
6 Gisselbeck 1302	0	0	1	0	0		U	1
7 Nowak 2249	0	U	U	U	U	U		0

'94 UCCC CLUB CHAMPIONSHIP SATELLITE SECTION I

NAME	RTG	1	2	TOT
1 D. Shughart	1800		1/1	2
2 J. Protic	1967	0/0		0

'94 UCCC CLUB CHAMPIONSHIP SATELLITE SECTION II

NAME	RTG	1	2	3	TOT
1 J. Protic	1967		1	1	2
2 D. McCourt	1734	0		1	1
3 S. Olszewski	1277	0	0		0



59TH MONTANA STATE OPEN

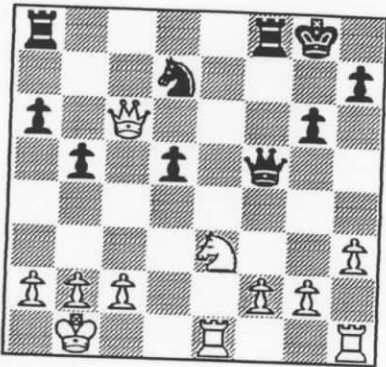
NAME	RTG	R1	R2	R3	R4	R5	TOT
1 M. Jensen	1935	W21	W15	W6	D2	W7	4.5
2 S. Smith	2103	W9	W12	W3	D1	D5	4
3 Z. Mayer	2045	W17	W10	L2	W4	W8	4
4 J. Johansson	2046	W20	W8	D13	L3	W9	3.5
5 T. Suits	1949	D19	W18	D7	W11	D2	3.5
6 J. Thompson	2100	D18	W19	L1	W17	W13	3.5
7 P. Motta	2017	W23	D14	D5	W13	L1	3
8 M. Long	1829	W16	L4	W21	W15	L3	3
9 D. Hansen	1720	L2	W22	W26	W10	L4	3
10 J. Skovron	1809	W28	L3	W14	L9	W20	3
11 D. Duke	1761	W26	L13	W16	L5	W17	3
12 L. Brennan	1880	W22	L2	L17	W23	W18	3
R. Matous	1898	W27	W11	D4	L7	L6	2.5
14 R. Erickson	1763	W25	D7	L10	D18	D15	2.5

NAME	RTG	R1	R2	R3	R4	R5	TOT
15 K. Limeson	1730	W24	L1	W25	L8	D14	2.5
16 C. Walker	1273	L8	W20	L11	W21	D19	2.5
17 R. Martin	1513	L3	W28	W12	L6	L11	2
18 G. Shuck	1712	D6	L5	W19	D14	L12	2
19 L. Polcari	1425	D5	L6	L18	W27	D16	2
20 S. Scarff	1663	L4	L16	W22	W25	L10	2
21 T. Bridges	1404	L1	W24	L8	L16	W25	2
22 D. Price	1361	L12	L9	L20	W28	W26	2
23 M. Martinez	1433	L7	L25	W28	L12	W24	2
24 N. Doulas	1142	L15	L21	D27	W26	L23	1.5
25 C. Jacobs	1237	L14	W23	L15	L20	L21	1
26 E. Mayer	1149	L11	W27	L9	L24	L22	1
27 C. Stauber	1379	L13	L26	D24	L19	D28	1
28 P. Arnot	1242	L10	L17	L23	L22	D27	0.5

RECENT GAMES

Jensen 1935 Carpenter 1852
JCCC Club Championship
4/14/94 Round 1
Modern Defense

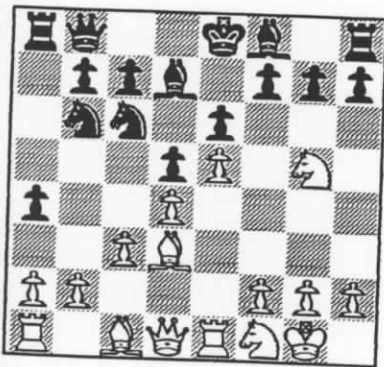
1. d4 g6 2. e4 Bg7 3. Nf3 c6 4. Nc3
d5 5. e5 Nh6 6. h3 f6 7. Bf4 O-O 8.
Qd2 Nf7 9. O-O-O fe5 10. Ne5 Nd7
11. Nf3 e5 12. de5 Nde5 13. Ne5
Ne5 14. Kb1 Qf6 15. Be3 Be6 16.
Re1 Qf7 17. Bd4 Nd7 18. Bg7 Kg7
19. Bd3 b5 20. Nd1 a6 21. Qc3 Kg8
22. Qc6 Bf5 23. Bf5 Qf5 24. Ne3



Black resigns.

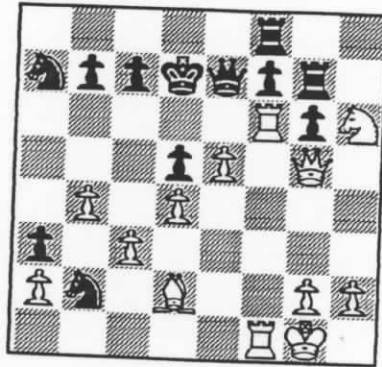
Jensen 1935 Nowak 2249
UCCC Club Championship
4/21/94 Round 2
French Defense

1. e4 e6 2. d4 d5 3. Nd2 Nc6 4. c3
Nf6 5. e5 Nd7 6. Bd3 a5 7. Ngf3 a4
8. O-O Nb6 9. Re1 Bd7 10. Nf1 Qb8
11. Ng5

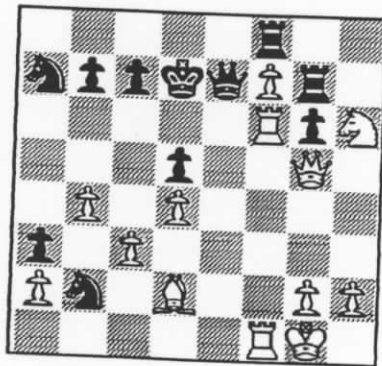


11. Be7 12. Nxe7 Qa7 13. Ng5
14. Qg4 a3 15. b4 Qa4 16. Ne3
Na7 17. f4 Qc6 18. Bd2 Na4

19. f5 Nb2 20. fe6 Be6 21. Bf5
Bg5 22. Qg5 Rg8 23. Be6 Qe6 24.
Nf5 g6 25. Rf1 Kd7 26. Nh6 Rg7
27. Rf6 Qe7 28. Raf1 Rf8



29. e6+ Ke8 30. exf7+ Kd7



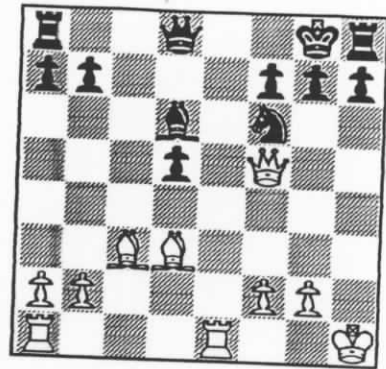
31. Re1 Qxe1 32. Bxe1 Black
resigns.

McCourt 1734 Moore 1653
UCCC Club Championship
5/5/94 Round 4
French Defense

1. e4 e6 2. d4 d5 3. e5 c5 4. c3 Nc6
5. Nf3 Qb6 6. Bd3 cd4 7. cd4 Bd7 8.
O-O Nd4 9. Nd4 Qd4 10. Nc3 Qe5
11. Re1 Qb8 12. Nd5 Bd6 13. Qg4
Kf8 14. Bd2 ed5 15. Qd7 Bh2 16.
Kh1 Nf6 17. Bb4 Kg8 18. Qf5 Bd6
19. Bc3 Qd8 Diagram next column...

THUNDER LIZARD CHESS SUPPLIES

Books, Boards, Clocks, pieces
525 1st St. Idaho Falls, ID 83401
(208) 523-5117



20. Re5? Bxe5 21. Bxe5 h5 22.
Re1 Ng4 23. Bg3 h4 24. Be5 Ne5
25. Re5 Rc8 26. Rd5 Rc1 27. Kh2
Qc7 28. f4 Qb6 29. Qe4 Rc8 30.
Re5 g6 31. Bc4 Qf6 32. Rg5 Kg7
33. b3 Rhe8 34. Qf3 Re7 35. Qg4
Re4 36. Bd5 Qf4 37. Qf4 Rf4 38.
Bb7 Rc2 39. Ra5 Rff2 40. a4 Rfd2
41. Bf3 Rc7 42. Kh3 Rd4 43. Bd5
Rc3 44. Kh2 Rd5 45. Rd5 Rb3 46.
Rd7 Ra3 47. Ra7 g5 48. a5 g4 49.
Ra8 Ra2 50. a6 h3 51. a7 Rg2 52.
Kh1 Ra2 53. Rb8 Ra7 54. Rb4 f5
White resigns

Shughart 1800 Protic 1967
UCCC Championship Satellite
5/5/94 Round 1
Philidor's Defense

1. e4 e5 2. Nf3 d6 3. Bc4 Nc6 4. d4
Bg4 5. Qd3 Bf3 6. Qf3 Nf6 7. d5 Nd4
8. Qd3 a6 9. c3 b5 10. cd4 bc4 11.
Qc4 Ne4 12. Qc6 Ke7 13. f3 Nf6 14.
O-O Ra7 15. Re1 Nd7 16. de5 f6 17.
ed6 Kf7 18. dc7 Qc7 19. Qe6 Kg6
20. Qe8+ Black resigns.



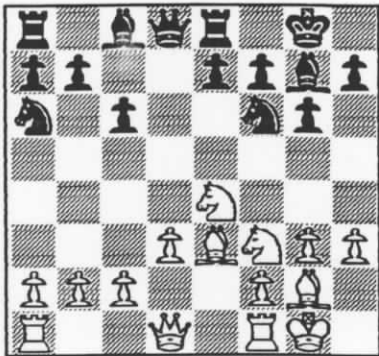
Create beautiful chess diagrams!
Linares TrueType™ chess font.
Specify Windows or Macintosh.
Send \$29 to: Alpine Electronics,
526 West 7th, Powell, WY 82435
Money-back guarantee!



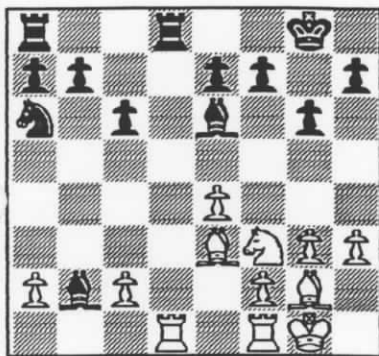
If your game isn't published in
Montana Chess News,
you'll probably see it in
Rocky Mountain Chess
P.O. Box 1508 Mills, WY 82644
(307) 235-5705

Polcari 1420 Suits 1949
59th Montana State Open
5/28/94 Round 1
King's Indian Attack

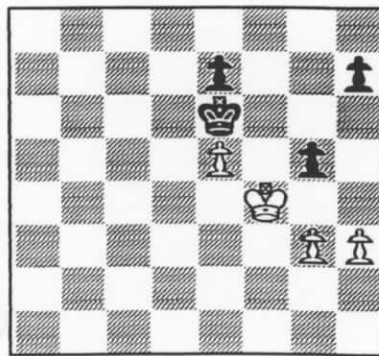
1. Nf3 Nf6 2. d3 g6 3. g3 d5 4. Nbd2
Bg7 5. Bg2 O-O 6. O-O c6 7. e4 de4
8. Ne4 Re8 9. h3 Na6 10. Be3



10... Nxe4 11. dxe4 Bxb2 12. Qxd8
Rxd8 13. Rad1 Be6



14. Rxd8 Rxd8 15. Rb1 Ba3 16.
Rb7 Rd7 17. Rd7 Bd7 18. Ba7 Nb4
19. Bc5 Nc2 20. Ba3 Na3 21. Ne5
Be8 22. Nd3 f6 23. f4 Bf7 24. e5
Bc4 25. Nc5 fe5 26. fe5 Ba2 27.
Bc6 Nc2 28. Kf2 Nd4 29. Bd7 Kf7
30. Ke3 Ne6 31. Be6 Be6 32. Ne6
Ke6 33. Kf4 g5+



34. Kxg5 Kxe5 35. g4 Kd4 36. Kh6
e5 37. Kxh7 e4 38. g5 e3 39. g6 e2
40. g7 e1=Q Draw agreed.

Johansson 2045 Scarff 1663
59th Montana State Open
5/28/94 Round 1
French Defense

1. e4 e6 2. d3 d5 3. Nd2 Bc5 4.
Ngf3 Nf6 5. g3 b6 6. e5 Ng4 7. d4
Be7 8. c3 f6 9. Nh4 Nh6 10. Ndf3
Nf7 11. ef6 Bf6 12. Bd3 Nd7 13. O-
O O-O 14. Qc2 Ng5



15. Nxc5 Bxc5 16. Bxh7+ Kf7 17.
Qg6+ Ke7 18. Bxc5+ Nf6 19. Qxc7+
Kd6 20. Ng6 Black resigns.

Z. Mayer 2045 Skovron 1809
59th Montana State Open
5/28/94 Round 2
Grob's Attack

1. g4 d5 2. Bg2 e5 3. d4 e4 4. c4 c6
5. Nc3 Bd6 6. cd5 cd5 7. Nd5 Qa5 8.
Nc3 Nf6 9. h3 Nc6 10. Bd2 Qb6 11.
g5 Nh5 12. e3 g6 13. Ne4 Be7 14.
Bc3 Bf5 15. d5



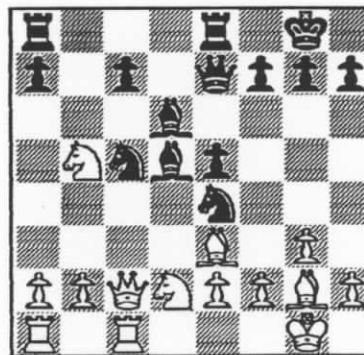
15... O-O? 16. dxc6 bxc6 17. Nf6+
Nxf6 18. gxf6 Bc5 19. Qf3 Bb4 20.
Qxc6 Bxc3 21. Qxc3 Rac8 22. Qd4
Qa5 23. b4 Qc7 24. Ne2 Rfd8 25.
Qh4 Qc2



26. O-O Black resigns.

Jensen 1935 Thompson 2100
59th Montana State Open
5/28/94 Round 3
Queen's Pawn Opening

1. d4 Nf6 2. c4 e6 3. g3 d5 4. Nf3
dc4 5. Qa4 Bd7 6. Qc4 Bc6 7. Bg2
Nbd7 8. O-O Bd6 9. Nc3 O-O 10. Qd3
e5 11. d5 Nc5 12. Qc4 b5 13. Nb5
Bd5 14. Qc2 Re8 15. Be3 Qe7 16.
Rfc1 Nfe4 17. Nd2



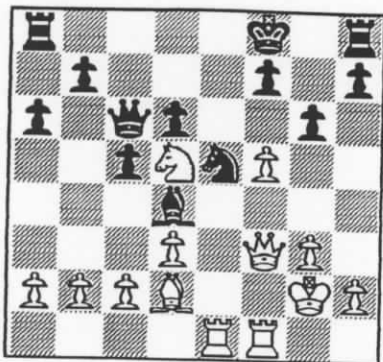
17... f5 18. Bxc5 Black resigns.

S. Smith 2103 Z. Mayer 2045
59th Montana State Open
5/28/94 Round 3
Closed Sicilian

1. e4 c5 2. Nc3 a6 3. f4 Nc6 4. Nf3
d6 5. g3 Bg4 6. Bg2 Nd4 7. O-O Qd7
8. d3 Nf6 9. Be3 Nf3 10. Bf3 g6

Smith - Mayer cont.

11. e5 Bf3 12. Qf3 Ng4 13. ed6 ed6
14. Nd5 Qc6 15. Bd2 Bg7 16. Rae1
Kf8 17. f5 Bd4 18. Kg2 Ne5



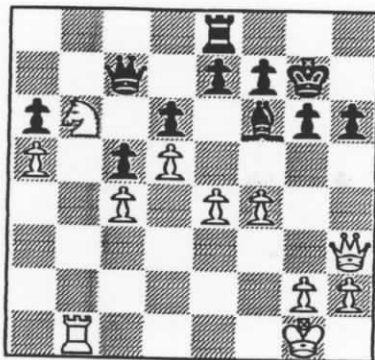
19. Bh6+ Ke8 20. c3 Kd8 21. Bg5+
f6 22. Bxf6+ Kd7 23. Qe4 Rhe8 24.
fxg6 hxg6 25. cxd4 cxd4 26. Qd4
Qc2+ 27. Rf2 Qxd3 28. Be5 Qd4 29.
Bd4 Re1 30. Nb6 Kc6 31. Na8 Re8
32. Rc2+ Black resigns.

Jensen 1935 **Smith 2103**
59th Montana State Open
5/29/94 **Round 4**
Dutch Defense

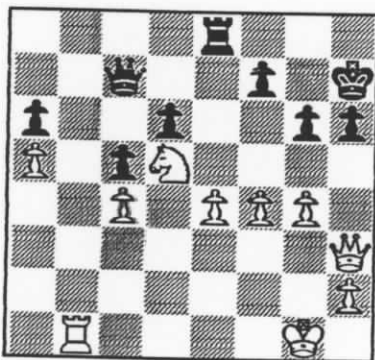
1. d4 f5 2. c4 Nf6 3. g3 g6 4. Bg2
g7 5. Nf3 d6 6. O-O O-O 7. Nc3 c6
8. b3 Qe8 9. Ba3 h6 10. Qc2 g5 11.
Rad1 Na6 12. Ne1 Qh5 13. f3 f4 14.
e4 fg3 15. hg3 Qg6 16. Ne2 Nh5 17.
Qd2 Bd7 18. Nc2 Rf7 19. Rf2 e5 20.
de5 de5 21. Qd6 Qd6 22. Bd6 Re8
23. Ne3 Bf8 24. g4 Nf4 25. Nf4 gf4
26. Nf5 Bf5 27. ef5 Rd7 28. Rfd2
Red8 29. Bb4 Bc5 30. Kh2 Rd2 31.
Rd2 Rd2 32. Bd2 Bb4 33. Bc1 Bc3
34. Ba3 c5 35. Bf1 b6 36. Bd3 Nb8
37. Be4 Kg7 38. Kh3 Nd7 39. Bc1
Kf6 40. Kg2 Kg5 41. Kh3 Nf6 42.
Bc6 h5 43. gh5 Nh5 44. Be4 Ng3 45.
Bd3 Nf5 46. Kg2 Nd4 47. Kf2 Kf6
48. Be4 Ke7 49. Ba3 Kd6 50. Bd3
a6 51. Bc1 b5 52. cb5 ab5 53. Ba3
Kc6 54. Be4 Kb6 55. Bd3 b4 56.
Bc1 Nb5 57. Ke2 Nd4 58. Kf2 Kc6
59. Be4 Kd6 60. Bd3 Ne6 Draw
agreed.

Suits 1949 **Duke 1761**
59th Montana State Open
5/29/94 **Round 4**
King's Indian Defense

1. d4 Nf6 2. c4 g6 3. Nc3 Bg7 4. e4
d6 5. f3 O-O 6. Be3 c5 7. d5 Na6 8.
Rc1 Nc7 9. Bd3 a6 10. a4 Bd7 11.
Nge2 Rb8 12. Qd2 b5 13. a5 bc4 14.
Bc4 Nb5 15. Na4 Nc7 16. Nb6 Bb5
17. b3 Nd7 18. Nd7 Qd7 19. O-O
Bc4 20. bc4 Rb2 21. Rc2 Rfb8 22.
Rfc1 Ne8 23. Nc3 Qb7 24. Na4 Rc2
25. Rc2 Qc7 26. Rc1 Nf6 27. Bg5 h6
28. Bf6 Bf6 29. Nb6 Bg5 30. f4 Bf6
31. Qd3 Re8 32. Qh3 Kg7 33. Rb1



33... Bc3?? 34. Qxc3 Kh7 35. Qh3
e6 36. g4 ed5 37. Nd5

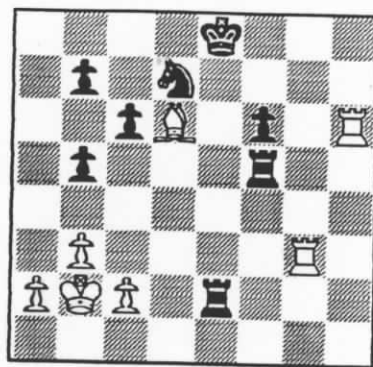


37... Qxa5?? 38. Nf6+ Black
resigns.

Z, Mayer 2045 **Johansson 2046**
59th Montana State Open
5/29/94 **Round 4**
Nimzowitsch Defense

1. e4 Nc6 2. d4 d5 3. ed5 Qd5 4.
Nf3 e5 5. de5 Qd1 6. Kd1 Bc5 7.
Nc3 Bf2 8. Nd5 Bb6 9. Be3 Be6 10.
Nb6 ab6 11. Bb5 Ne7 12. Rf1 O-O
13. Bc6 Nc6 14. b3 Ra5 15. Bf4 Bg4
16. Kc1 Bf3 17. Rf3 Ne5 18. Rg3
Re8 19. Kb2 Rd5 20. Re3 f6 21.
Rae1 Kf7 22. R1e2 b5 23. g4 h6 24.
h4 c6 25. g5 hg5 26. hg5 Re7

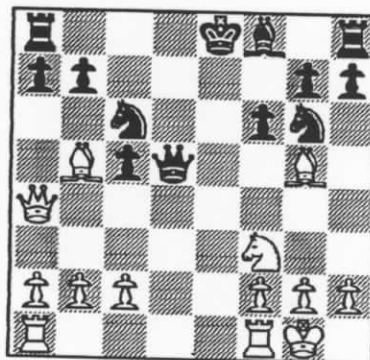
27. gf6 gf6 28. Rh2 Ke8 29. Rh6
Nd7 30. Rg3 Rf5 31. Bd6 Re2



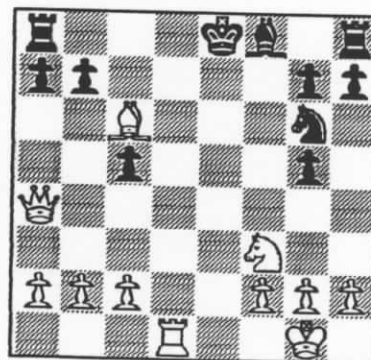
32. Rg7 Kd8 33. Rh8+ Re8 34.
Be7+ Kc7 35. Rxe8 Rf2 36. Bc5
Black resigns

Johansson 2046 **Hansen 1720**
59th Montana State Open
5/29/94 **Round 5**
Reiffson's Gambit

1. e4 e5 2. d4 ed4 3. Nf3 d5 4. Qd4
Be6 5. Nc3 c5 6. Bb5 Nc6 7. Qa4
Ne7 8. ed5 Bd5 9. Nd5 Qd5 10. O-O
Ng6 11. Bg5 f6



12. Rad1 Qxd1 13. Rxd1 fxg5 14.
Bxc6+



14... Ke7 15. Qe4+ Kf6 16. Bd7 Nf4
17. Qe5+ Black resigns.

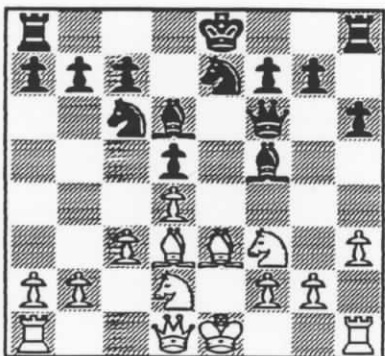
1. e4 e6 2. d4 d5

Michael and I have met five times in tournaments and four times we have been testing different variations of the French. In our first encounter I tried as White 1. e4 e6 2. d3 and in the three last games Michael has tried as White the Advance, the Tarrash and now the Exchange variation. 3. ed5 ed5 4. Bd3

A drawish line, 4. c4 would add some fire. I actually expected Michael to add some fire, sooner or later. 4... Nc6 5. c3 Bd6 6. h3 h6 7. Nf3 Qf6!?



Until now everything is old and rather boring. This homecooked move (7.Qf6) is an idea I tried some time ago for the first time against Les Brennan in a similar situation. 8. Be3 Nge7 9. Nbd2 Bf5



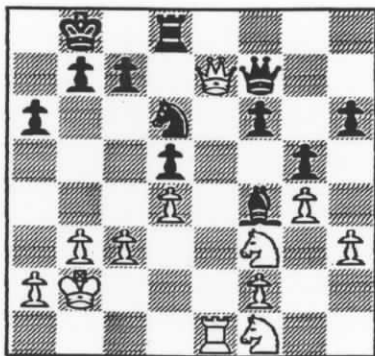
In this line it is no problem for Black to take off his "bad bishop". 10. Qc2 g5



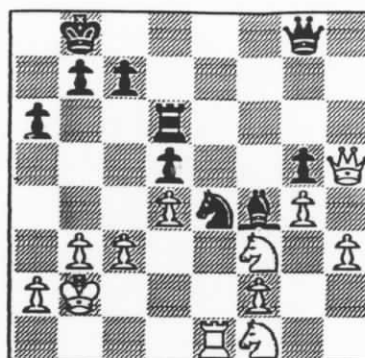
With the plan 11...Qg6, to force White to trade bishops. 11. g4 Bd3 12. Qd3 O-O-O 13. O-O-O Ng6 14. Kb1 Nf4 15. Bf4 Bf4 16. Rhe1 Rhe8



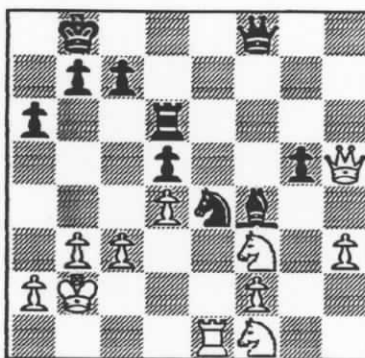
The battle of the only open line begins. 17. Re2 Re2 18. Qe2 Qg6 19. Kc1 f6 20. Re1 Kb8 21. b3 a6 22. Kb2 Na7 23. Nf1 Nc8 24. Qc2 Qf7 25. Qe2 Nd6 26. Qe7



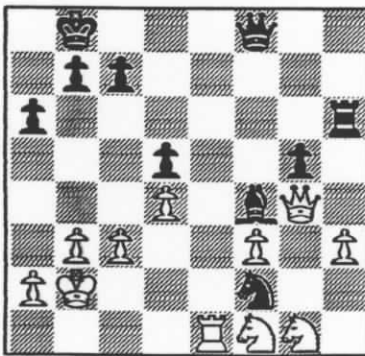
26... Qg8! (Throwing out the net to catch the white queen) 27. Qxf6? Her majesty walks right into the trap 27... Ne4 The back door closes! 28. Qxh6 Rd6 29. Qh5



And now Black could have trapped the white queen with 29... Qf8!! with the threat Rh6, and to get out she has to pay a high price (30. Rxe4 dxe4 31. Ne5 Bxe5 32. dxe5 Rd1 and Black should win). 29... Nf6 30. Qh6 Ng4 31. Qh5 Nf6 32. Qh6 Ne4 33. Qh5 Qf8

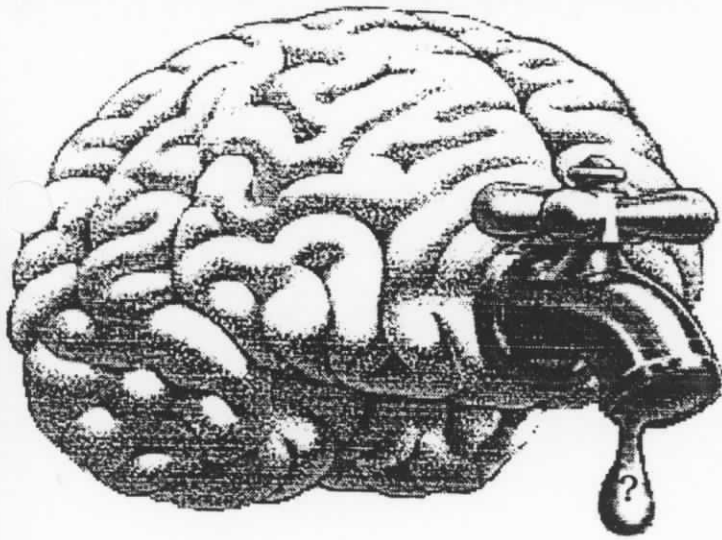


With the nasty threat 34... Rh6 35. Qg4 Nxf2 & Nd3+. 34. Ng1 Rc6! With 19 minutes left for 12 moves Black tries to complicate the situation, seeing that the natural 35. Re2 fails because of 35... Rh6 36. Qf3 Rf6 with the threat Bc1+, etc. 35. f3? Rh6! 36. Qg4 Nxf2!



37. Resigns. (because of i.e. 37. Qg2 Nd3+ winning the rook.)

Jan Johansson is the 1994 MCA Grand Prix Champion



NEGATIVE IMMORTALITY is better than NO IMMORTALITY?

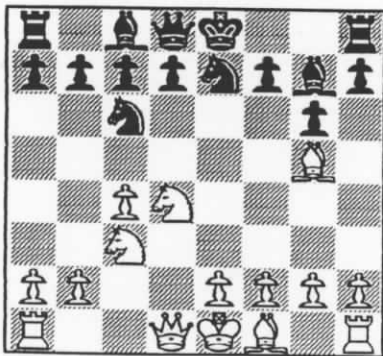
(FROM THE MIND OF JAMES R. LOY)

Do you remember the Immortal Shower of Copper Game? As I recall, the spectators showered the players with copper coins. The players survived the attack, and even were able to inflict some injury upon a couple spectators. But Maybe it was just one of my dreams. I wonder. This may or may not be that game.

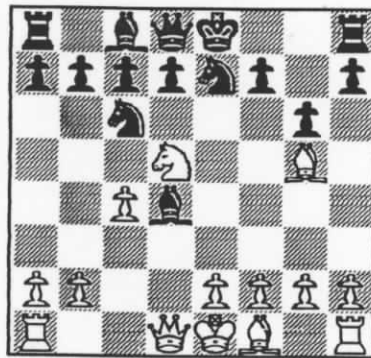
This game was published in Larry Evans' column, in Chess Life. Ron Erickson doesn't like the game, as it may be his ticket to Klesentskyan immortality (the eternal fame of having lost the most famous game of all time). My apologies to Ron, but I must seize the reciprocal Anderssenian immortality. Besides, I've discovered an interesting sequel to this game, which I'll show you here.

**Loy - Erickson
1989 Montana State Open**

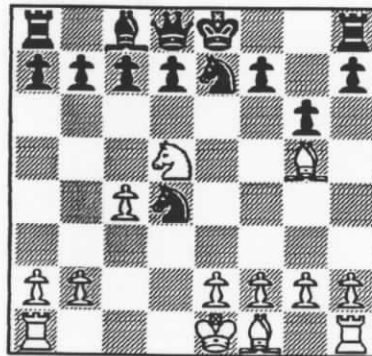
1. c4 e5 2. Nc3 Nc6 3. Nf3 g6 (conservative) 4. d4 ed4 5. Nd4 Nge7 6. Bg5 Bg7 (not so good)



7. Nd5 Bxd4



8. Qxd4!! Nxd4??



9. Nf6+ (Black probably fell for the trap because he expected the reasonable 9. Bxe7, regaining the queen) 9... Kf8 10. Bh6++



If you're interested in déjà vu (And who isn't?), here is a game from Chernev's 1000 Best Short Games of Chess:

**Hopkins - Amateur
London 1932**

1. e4 e5 2. Nf3 Nc6 3. d4 ed4 4. Nd4 Nge7 5. Nc3 g6 6. Bg5 Bg7? 7. Nd5 Bxd4 8. Qxd4!! Nxd4?? 9. Nf6+ Kf8 10. Bh6++



P.S. Sorry I missed this year's Open. I was in L.A. at the District 9 Checker Championships, where I surprisingly took first place in division B. It just shows the truth of that old saying: "I'd rather be playing checkers."

Jim Loy



WHY PLAY CHESS?

John Charles Thompson looks back

"Why do you want everybody to play chess?" Ashley Hale asked me.

That struck me as a strange question. Ever since I had learnt the moves of the game, in the Boys Division of the Dallas YMCA, I had taken it for granted that everybody should play chess.

I taught several other boys how to play, they taught others, and we formed a club and prevailed on the Dallas city champion to be our coach. Every Saturday afternoon, for several hours, a dozen or so of us could be found at the Y, absorbing strategy and tactics from the champion, Allan Anderson.

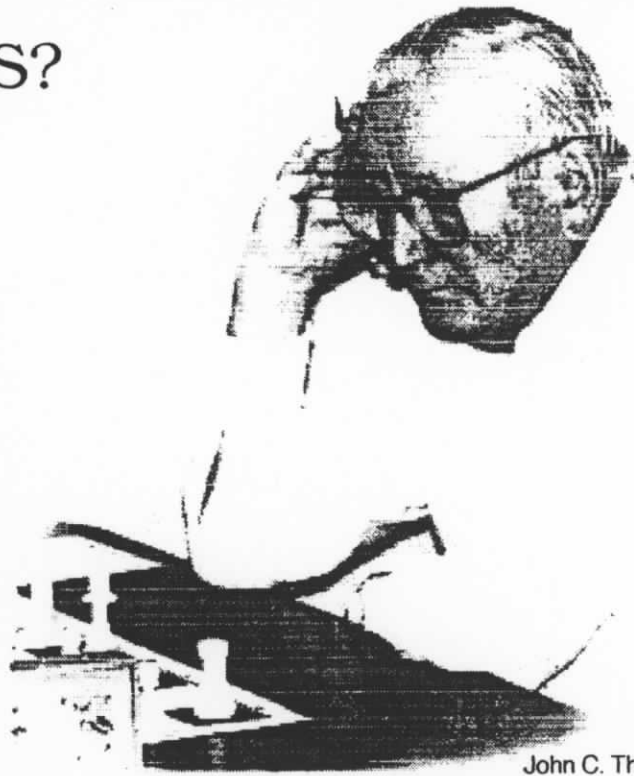
This was in 1926. The Y had a men's chess club but we boys were allowed to play. I made slow progress until I acquired a copy of Nimzowitsch's masterpiece, "My System." This is the finest chess book I have ever read. I won the Dallas city championship in 1930 and was second in the Texas state championship in 1932.

However, my progress as a player has always been secondary to my love of promoting the game. I founded the present Texas Chess Association and its main event, the Southwest Open, in 1935 and both are still going strong.

I am the person most responsible for getting the Swiss System adopted worldwide, after giving due credit to George Koltanowski who told us about it.

In the early years of the Southwest Open, which is always played on Labor Day weekend, we divided the players into groups. Each group played a round-robin within itself, the winners graduating into the championship flight, the second players into Class A, third into Class B, and so on. This meant that we had to play around 15 games in three days. We brought George to Dallas for a series of exhibitions and told him of our problem. He told us about the Swiss and we used it in the Southwest Open in 1942. Seven games in three days! It was like heaven.

USCA has used the Swiss ever since. Then, in 1947 we brought the United States Chess Federation Open tournament to Corpus Chrita, Texas and had 87



John C. Thompson

players, by far the biggest chess tournament on record. I was a USCF Vice-President at the time and in charge of the tournament. Koltanowski was tournament director and readily agreed to using the Swiss. Later I read an article by the Australian master C.J. S. Purdy in which he said, "When I read that they had played a tournament in Texas with 87 players in 14 days, I wondered if it were a misprint or if the Texans were supermen after all."

That was the first national tournament to use the Swiss and its use spread all over the world. I consider adoption of the Swiss and the Elo rating system to be the most important developments for the good of chess in the twentieth century.

I played in the first 16 Southwest Opens and won seven times, second seven, third once, and fourth once. I was either President or Secretary-Treasurer during that time.

A memorable SW Open was 1949, played in Tulsa, Oklahoma. Moving the tournament out of Texas was a fine idea since we acquired a number of Mid-western players, several of whom continued to play in subsequent events.

I have taught thousands to play chess but my all-time pupil is Ken Smith. Ken showed an early talent and kept doing better and better in the Texas tournaments,

"I consider adoption of the Swiss and the Elo rating system to be the most important developments for the good of chess in the twentieth century."

so much so that for the 1949 tournament there was a great deal of speculation as to whether or not I could hold him off any longer.

However, in the Tulsa tournament both Ken and I were under-dogs. The favorite was Robert Steinmeyer St. Louis, who was considered one of the strongest players in the country. I won from Ken in the fifth round and from Bob in the sixth, in one of my best efforts.

I should mention two other important tournaments. In 1940 we brought the USCF to Dallas. This was before adoption of the Swiss so we divided the players into three groups of nine. I was in the same group as Reuben Fine and got a draw with him in our individual game and tied with him for first place. The other players of note were Herman Steiner, Pacific Coast champion, and Weaver Adams, champion of New England.

We had nine players in the finals and Fine mowed us all down.

In 1942 we brought the tournament to Dallas again and this time the leading players were Al Horowitz, Herman Steiner, and Abie Yanofsky, the 17-year-old Canadian champion.

I had only eighteen players so we made it a found-robin. Horowitz beat Yanofsky and Abie won from Steiner. In my game with Horowitz I offered him a draw on about move 28. Al, always the soul of honesty, thought a minute then agreed to the draw. He said, "You have the better position, but I need the extra half-point. This means I'll have to beat Herman to win first place." However, Steiner was also a fine player and won from Al, tying for first place with Yanofsky. Horowitz was third and I fourth.

In 1952 my company transferred me to Calgary, Canada and later to Venezuela, Turkey and Singapore (a beautiful city, practically crime-free because they beat the living daylights out of the few

criminals stupid enough to commit crimes).

My chess in all those places was mainly of the skittles variety, although I played on the Singapore team against some invaders, from Malaysia, I think.

After Singapore, where I retired from Mobil Oil, I worked for a couple of years for Occidental Petroleum in Tripoli, Libya. I gave a couple of simulms but no serious chess.

I returned to my home city of Dallas (actually, the suburb, Richardson) in 1973 and joined the Dallas Chess Club, which I had organized in 1934 as the Dallas YMCA Chess Club. I won the city championship one year and began playing in the SW Open again.

Then I received an offer from the International Executive Service Corps to work for them in Venezuela, which I did for two years then did consulting work for one of the nationalized oil companies. No serious chess during that time.

We moved to Billings in 1982 and I have been busy ever since teaching chess at the YMCA and at various elementary schools. This has been a lot of fun because kids really take to chess.

I have played in various tournaments sponsored by the Montana Chess Association and won the state championship once, tying for first on another occasion. I still make it to Texas every year to play in the Southwest Open, usually with fairly respectable results.

I have been unsuccessful in getting an adult chess club going in Billings but will continue trying. The new President of the Montana Chess Association, David Duke, lives here and may be able to stimulate interest.

“In my
game with
Horowitz I
offered
him a
draw on
about
move
28.”

John C. Thompson
USCF Master Emeritus



UPCOMING EVENTS



ALL MCA GRAND PRIX EVENTS WILL BE ADVERTIZED AS:



AN MCA GRAND PRIX EVENT



UCCC MIDSUMMER OPEN JULY 16, 17, 1994 \$225 (in Chess Digest gift certificates) GUARANTEED

Room 362, Social Science Building, University of Montana, Missoula, MT. 5 Round Swiss. Time control: G/2, Rounds: 9:00am, 1:30pm, 6:30pm, 8:30am, 1:00pm. Registration: 8:00 - 8:30am July 16. EF \$15 if rec. by 7/14, \$25 at site. \$\$ G 225 (in Chess Digest gift certificates) - 1st \$100 2nd \$50, 3rd \$25, <1700 \$15, <1500 \$15, Biggest Upset \$20 (Both players must have nonprovisional rts). MCA membership required (\$6), other states OK. No smoking, No computers, Wheelchair accessible. Cancellations received by 8:00am 7/16 (by calling 406-243-2843) entitled to full refund. For advance registration or info, contact: William H. McBroom, 2321 Raymond Avenue. Missoula, MT 59802 (No Phone Entries)

RIMROCK OPEN AUGUST 20, 21, 1994



AN MCA GRAND PRIX EVENT



At the home of Zygmund Mayer, 4415 Rimrock Road, Billings, MT 59106. 4 Round Swiss. Time control: 30/90, G/1. Rounds: 9:00am, 2:30pm, 9:00am, 2:30pm. Registration: 8:00 - 8:30am August 20. EF \$15 if rec. by 8/18, \$20 at site. Prizes: 80% turn of entrance fees (If under 12 entries - two classes, if 12 or more entries - three classes.). MCA membership required (\$6), other states OK. No smoking, No computers. For advance registration or info, contact: David Duke, 4 Wakefield Dr. Billings, MT 59102. (406) 655-0586

BEARTOOTH MOUNTAIN OPEN SEPT. 17, 18, 1994 \$500 GUARANTEED

Cook City Firehall, Cook City, Montana. 6 Round Swiss. Time control: G/1 (Full K). Rounds: 9:00a.m., 1:00p.m., 7:00p.m., 9:00a.m., 12:00p.m. Registration: 8:00 - 8:45a.m. Sept. 17. EF \$20 if received by 9/12, \$25 at site. Juniors 50% \$\$ G 500 - 1st \$150, 2nd \$50 Top A \$50, Top B \$50, Top C \$50, Top D \$50, Top E \$50, Biggest Upset \$5 (Both players must have nonprovisional ratings). MCA membership required (\$6), other states OK. No smoking, No computers. **ALSO:** Hypoxia Blitz Friday night, 9/16 Winner takes all! (G/5) Starts at 9:00p.m. at the All Seasons Hotel. EF: \$5 No memberships required. All Seasons Hotel: (406) 838-2251 rooms: \$50 double. For Information / Registration: John Kennedy, Box 2307, Colstrip, MT 59323 (406) 748-4449

UCCC TURKEY OPEN NOVEMBER 5, 6, 1994 \$255 GUARANTEED

Room 362, Social Science Building, University of Montana, Missoula, MT. 5 Round Swiss. Time control: G/2, Rounds: 9:00am, 2:00pm, 7:00pm, 8:30am, 1:00pm. Registration: 8:00 - 8:45am Nov. 5. EF \$15 if rec. by 11/3, \$20 at site. \$\$ G 255 - 1st \$100 2nd \$50, 3rd \$25, <1900 \$25 - \$15, <1700 \$15 - \$10, <1500 \$10 - \$5, Plaque for Biggest Upset (Both players must have nonprovisional rts). MCA membership required (\$6), other states OK. No smoking, No computers, Wheelchair accessible. For advance registration or info, contact: Sherwood Moore, 453 Minnesota, Missoula, MT 59802 (406) 728-1695

ALTERNATES FOR THE CLOSED

No date as yet has been set for the Closed because of the natural difficulty associated with getting six people together at the same time (Maybe it'll be easier to get ten people together). But, if and when the date is set, provision will be made for alternate players, as things do happen and sometimes one or two of those qualified for the Closed will not be able to make it.

The six MCA members qualified for the Closed this year are

1. Greg Nowak (The State Champ is seeded first)

Alternates for the sole State Champion are the fourth and fifth place (etc.) finishers in the State Open, i.e.:

1. John C. Thompson
2. Paul Motta

2. Jan Johansson (Top MCA Grand Prix finisher)

3. Les Brennan (Second MCA Grand Prix finisher)

The third and fourth place (etc.) MCA GP finishers are alternates for MCA GP seeds, i.e.:

1. Michael Long
2. Paul Motta

4. Michael Jensen (First place finisher @ State Open)

5. Zygmund Mayer (Second place finisher @ State Open)

6. Thad Suits (Third place finisher @ State Open)

The fourth and fifth place (etc.) State Open finishers qualify as alternates for the top three place finishers, i.e.:

1. John C. Thompson / 245-8422
2. Paul Motta

When figuring place finishers at the State Open, nonresidents and the two MCA Grand Prix seeds are ignored, as well as the Montana State Champion.

FINAL MCA GRAND PRIX POINT STANDINGS

As of the State Open
5/29/94

1. Johansson....59.26
2. Brennan.....55.70
3. Nowak.....50.02
4. Z. Mayer.....41.69
5. Long.....36.88
6. Motta.....35.40
7. Jensen.....34.21
8. Duke.....24.59
9. Skovron.....19.08



SUIT125 594012031 1694 07/08/94
NOTIFY SENDER OF NEW ADDRESS
SUITS
2015 4TH AVE N
GREAT FALLS MT 59401-2733

12475278 1949 R 9411
Thad Suits
2125 1st Ave. N
Great Falls, MT 59401

