

MONTANA

CHESS NEWS

Volume 27, Issue 2 — May 2002

In this issue:

Montana gets ready for the 67th Open
Johansson wins Billings' St. Paddy Open
SCOTT YOUNG - MONTANA JUNIOR CHAMPION!!!
Elston Cloy, Spokane High School player, wins Crocus
Helena hosts Mt. Junior Championship, over 40 attend.
Lots of games and pictures

Toothbrush Sales Are Way Up (and other windy proclamations)

by Dan McCourt - Western V.P.

Thad Suits once put out the call for more ideas on how to promote Montana chess. As I recall, I was the one person who poopahed the idea of working harder at providing chess programs for the State's youth. Too much work had already gone into too little pay-back, I reasoned. It was something akin to being asked to go door to door selling toothbrushes. Editor Thad chided me, but it was not until last summer's Triple header in Helena, that I came to realize that chess, pizza, and kids are a natural combination. When I described the Tripleheader proceedings to Dennis Petrak, he responded that it was exactly that kind of event that met his prescription for better prospects for the MCA – faster time controls and more kids involved. Possibly, I am the last to make this connection.

Speed and youth . . . the big story of the 2001-02 chess year.

Faster time controls have won over a lot of proponents from the Bozeman tournaments. G/90 is likely to supplant G/2 as the TD's choice for future grand prix events. And scholastic chess in Helena and Mis-

soula played to packed houses. Both events will have to move on to bigger playing sites. There is a good chance that by this time in 2003, the MCA will have doubled in membership from December 2001. Th new members will mostly be juniors and the organization is going to have a different look and feel. Helena and Missoula have enough interest that they can easily support three scholastic tournaments in each city. And some of these kids should be provided a reserve section at the regular grand prix events. Like the song says, "the future's so bright, I gotta wear dark glasses!"

The State Open is fast approaching. So far, the turnout looks to be very good. I've been making lists and checking them twice for potential participants.

Thirty is a solid bet with 40 being an 80% chance. 45 is what is needed for the prize fund and 50 is the goal. It will be near bedlam, of course, but we're getting used to that scenario after working three scholastic tournaments since January.

Check into the website if you can offer a ride or a place to stay – or if you need a ride or a place to stay. Call or email me for information on motels and restaurants.

News from the Editor

The State Closed is upon us. The only proposals for the business meeting came from Dan McCourt, which you will find in the next article. Perhaps the lack of proposals says the natives are content with the progress and direction of the MCA. As for candidates for the Board of Directors, Mel Drake is running for reelection for the Eastern V.P. and Dan McCourt is running for reelection for the Western V.P.

Bill McBroom is running for Executive Vice President and David Duke maybe running for Secretary/ Treasurer.

No other members have voiced an interest in the offices.

MCA Board Members (2001-2002)

Jan Johansson - President (333-4901)
rayanjan@mcn.net

Sherwood Moore - Vice President (728-1695)
smoore1721@aol.com

Paul Motta - Secretary/Treasurer
webmaster@montanachess.com

Mel Drake - Eastern V.P. (475-3481)

Daniel McCourt - Western V.P. (721-0254)
dmcc@micro-mania.net

Let them know about your ideas, complaints, suggestions, and praise.

Montana Chess News is published by the Montana Chess Association, an affiliate of the U. S. Chess Federation. Subscription and membership in the MCA is \$10/yr regular, \$5/yr junior (Under 18), \$15 Family. Discounted 3 year rate:\$25 regular, \$12 junior, \$35 Family. First time players who are also new to the U.S.C.F. shall have their first year's MCA membership fee waived

Editor - David Duke
P.O. Box 3052
Billings, MT 59102
(406) 254.8474 , (406)254.2121
E-mail: dalduke@juno.com

All submissions are welcome, including photos. Articles by E-mail or on a PC-formatted diskette are especially appreciated.

Publishing Schedule:
Issue 1 - Mar. 1, Issue 2 (Special for the Open) - May 10, Issue 3 - July 31, Issue 4 - Sept. 25, Issue 5 - Dec. 8. Deadline for most submissions is ten days before the publication date.

Business Meeting Proposals

By Dan McCourt

The Hot Air Balloon will be launched at 1:30 p.m., Sunday. Otherwise known as the MCA Business Meeting, this is the forum wherein and whereas, we cuss and discuss candidates and the various proposals for undoing or redoing the business of past meetings.

I intend to run for the office I currently hold. My "platform" would include ideas previously mentioned in this article . . . more scholastic tournaments and support for faster time controls at the regular rated events. I am dropping a previous proposal to put on an "Invitational" combined with a 10 person closed. There are enough tournaments on the schedule and my "invitational/ 10-man" would just clog up the calendar.

I do propose that we take steps to amend our constitution and eliminate the provision for


proxy voting. The use and definition of a proxy has become a divisive, poisonous issue.

Drop the proxies, raise the dues, play the Open in July and drop the Closed . . . dan mccourt.

I also propose that we raise the dues by one dollar for adults and juniors but cap family dues at \$10 for all-youth memberships and \$15 if an adult is included. Our shoestring budget needs more cushion. Newsletter costs will be .60 for postage alone very soon. That's \$3.00 of a \$5.00 youth membership.

I also propose raising the entry to the Open by \$2.00. TD's need more flexibility to meet costs - especially rent. "Free" rooms with enough space are very hard to find.

Lastly, we should discuss the scheduling of the Open. Let's call it the John Barto - MT. Open, play it in July, and drop the Closed entirely!! See you at the meeting.



Grand Prix

Race Leaders

Skovron, J.	45.26
Johansson, J.	39.39
Nowak, G.	28.70
Erickson, R.	24.09
McBroom, W.	20.10
Moore, S.	15.12
McCourt, D.	14.11
Petrak, D.	12.09
Katzl, R.	11.54

Biggest Upset to Date
Richard Stuckey - 511 points

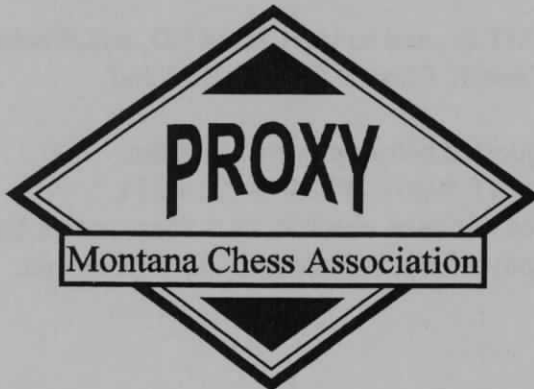
 ★ MCA thanks ★
 ★ Jan Johansson and ★
 ★ Sherwood Moore, out- ★
 ★ going MCA Board ★
 ★ Members ★
 ★*****

Visit Montana Chess on the Net
www.montanachess.com
www.chessmontana.com

**NOTICE OF ANNUAL MEETING
OF
THE MONTANA CHESS ASSOCIATION**

- ◆ As a member in good standing as of June 2002, you are hereby notified that the Annual Meeting of the members of the Montana Chess Association will be held on Sunday, June 2, 2002, at 1:30pm, at the Missoula Children's Theatre, 401 East Broadway, Missoula, Montana.
- ◆ If you do not expect to attend this meeting and you would like to have your vote counted, you may sign the proxy form below, appointing any officer of the Board of Directors or another member as your proxy. The completed and signed proxy forms must be turned in before the start of the 3rd round of the Montana Open. These proxy forms should be mailed to the Secretary/Treasurer at the address below or be mailed or be given to an appointed member to be carried to the Montana Open. All proxies carried must be submitted to the President or the Secretary/Treasurer before the beginning of round 3 of the tournament.
- ◆ The Sec/Tres. can receive proxies through June 2 at:
P.O. Box 7891, Missoula, MT 59807-

There is no requirement to vote or submit a proxy.
Your membership must be current as of June 2002.
One vote or proxy per newsletter.
Proxy votes count toward establishing a Quorum, election of Officers, and voting on Bylaws.
Deadline: beginning of round 3 of the tournament.



INFORMATION

- Jan Johansson, PO Box 1128 Emmigrant, MT 59027
- Dan McCourt, 608 W. Central, Missoula MT 59801
- Sherwood Moore, 453 Minnesota, Missoula MT 59802
- Mel Drake, 5950 Canyon Ferry Rd, Helena, MT 59602
- Paul Motta, PO Box 7981, Missoula, MT 59807

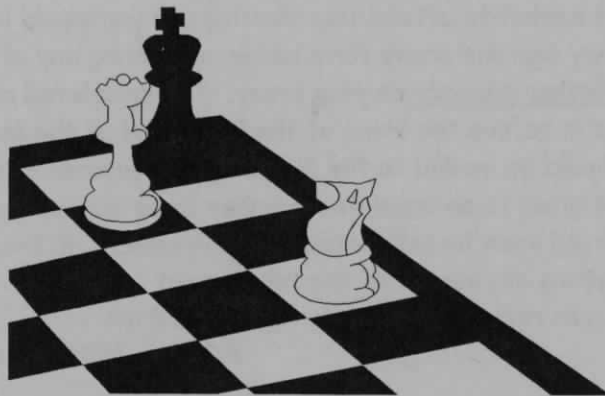
I hereby appoint _____, with power of substitution, to act for me as my proxy at the Annual Business Meeting of the Montana Chess Association, to be held June 2, 2002, at 1:30pm in Missoula, Montana, with full power and authority to act for me in my behalf in the transaction of such business that may come before the meeting, with all the powers that I, the undersigned, would possess if I were personally present.

Signed: _____
Printed name: _____

Date: _____

67th Montana Open

June 1-2



Location: Missoula Children's Theatre, 401 East Broadway, Missoula

Format: 5SS, G/2. Computer pairings. Open to all

Schedule: Reg: 8-9:15am. Rds: 10-2:30-7, 9-3 MCA Business Meeting Sunday, 1:30pm

Entry Fee: \$20 by 5/31, \$25 Site, Jrs 1/2

Awards: Trophies to top overall, top MT Sr, top MT Jr., and to top Class C, D, and E/below \$45, more if entries exceed 50: Expert/above, Class A, Class B \$70 1st, \$30 2nd

Three biggest upsets, \$40-30-20

1/2 pt byes available, bye for rds 4 or 5 must be requested before players 1st game.

Enter: Dan McCourt, 608 West Central, Missoula MT 59801. Ph. 406-721-0254, dmcc@micro-mania.net. Phone/e-mail ents accepted but must check in by 9:15am unless 1st round bye was requested. PayPal entries: [Paypal.com/refer/pal=dmcc%40micro-mania.net](https://www.paypal.com/refer/pal=dmcc%40micro-mania.net). NS, NC, W. WEB

Player	USCF Number	City/State	Entry

Scholastic Scene: Montana Junior Chess Championship

Scott Young - Jr. Champ!

Forty-three Junior chess players competed in the Montana Junior Chess Championships held Saturday, April 27, in Helena. Using a Game/30 format, the Kindergarten through 12th grade tournament was divided into four sections with trophies going to the three best scores in each group and the winner of the 9-12 section recognized as the Montana Junior Champion.

Scott Young, a Missoula eighth-grader, "played up" in the high school section and scored 4-0-1 in five games to win the Junior Championship. Scott combined solid play and maximum use of the clock to outdistance the rest of the field.

Great Falls area players scored well in the 9-12 section, with two Cascade High students, Paul Moe and Randy Standley, finishing second and third behind Young. They were followed by Kirk Lundby, a Great Falls seventh grader who tied for fourth (who also played up), and by Sam Harkness (Cascade) and Ryan Stutzman (Ulm) who were tied for 6th with 2 ½ points.

Mike Schuyler, of Livingston, elbowed into the middle of the Cascade County Crowd with 3 points and bested Lundby on tiebreaks. Helena Juniors dominated in numbers and in prizes as 26

locals competed with eight winning trophies.

Allan Carwright and Dylan Allen each recorded 5-0 scores to win in the 6-8 grade section while Ted Harwell and Conner Sullivan finished 2nd and 3rd in the K-3 section.

Virginia Duke and David Hess-Homeier equaled Drake's score, but Gavin's tough schedule gave him best on tiebreaks.

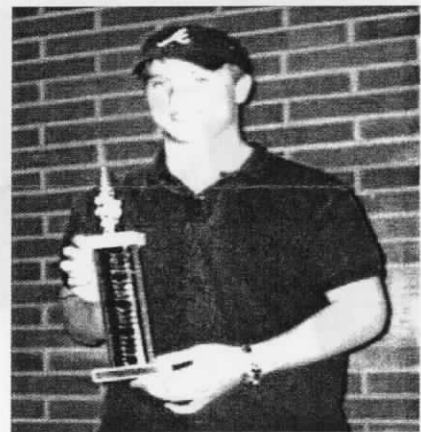
In the Grade 4-5 section, three players had 4-1 scores with Stan Duke of Billings getting the edge on tiebreaks. Second place went to Helena 2nd grader, Ethan Tilly, who was playing up and third place went to Andy Erickson, also of Helena. Interestingly, all three players recorded 4-game winning streaks.

Organizers Chuck Tilly, Mel Drake, and Dan McCourt would like to thank Jim Skovron, Charlene Young, Barbara Haugan, David Duke, Leonard Lundby, and Marvin Drake for their indispensable assistance with set-up/ take-down, making pairings, recording results, maintaining law and order, and grabbing the initiative when something needed to get done. Thanks also to Jason Ames and Joshua Miller for lugging all those tables and chairs.



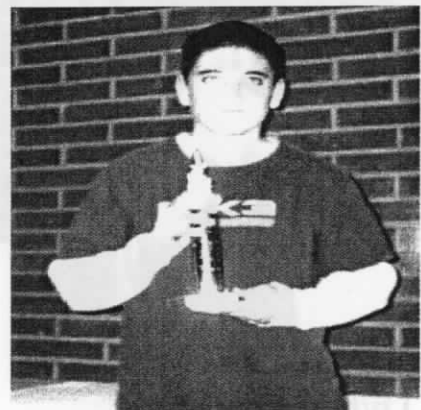
Scott Young

Montana Junior Champion



Paul Moe

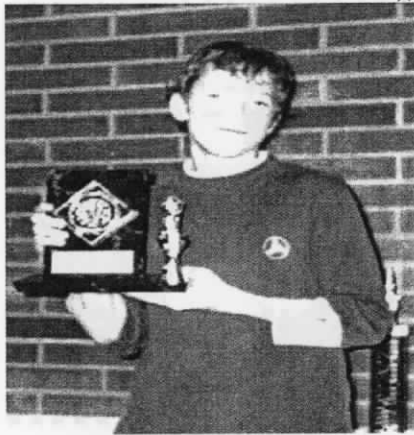
2nd Place - Open



Randy Standley

3rd Place - Open

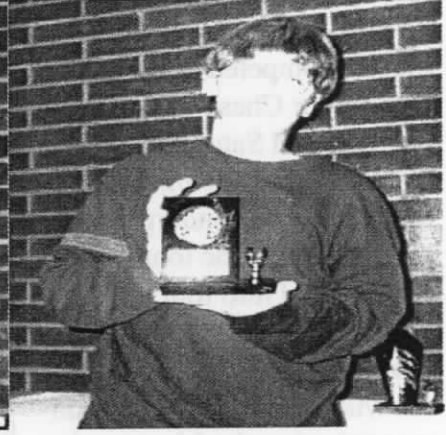
 ★ The Champions ★



Alan Cartwright - 1st
 (6-8th grade)



Devin Rule - 2nd
 (6-8th grade)



Gavin Drake - 3rd
 (6-8th grade)



Stan Duke - 1st
 (4-5th grade)



Ethan Tilly - 2nd
 (4-5th grade)



Andy Erickson - 3rd
 (4-5th grade)



Dylan Allen - 1st
 (K-3rd grade)



Ted Harwell - 2nd
 (K-3rd grade)



Conner Sullivan - 3rd
 (K-3rd grade)

Elston is Excellent at the CROCUS by Dan McCourt

Elston Cloy, a Spokane high school senior, took an emphatic 1st in the 2002 Crocus Open. His 4.5 score was punctuated with a last round win over Greg Nowak while his best effort was probably the 3rd round win over Mike Jensen.

Jensen lost only to Cloy and finished clear 2nd with four points. He scored 2nd and 5th round wins over Nowak and Rudy Katzel.

Phil Weyland, a 9th grader from Post Falls, ID, finished 3rd on 3.5 points. He lost only to Nowak and had a 2nd round draw with Katzel.

The top three boards, Nowak, Pat Herbers, and Katzel, all finished with 3 points. Cash prizes went to Dave Shughart, Bill McBrook, and David Griffin.

Thanks to Jim Cadwallader for accepting the role of Houseman. Thanks also to Sherwood Moore and Ron Erickson who took time out of very demanding schedules to pay a full entry for only one game. Biggest upset goes to Richard Stuckey for his 531 point upset over Sherwood Moore in Round 1.

Finnegan's Family Restaurant

Breakfasts for Chess Champs
24- hours a day
700 East Broadway
Thanks for your support
of the 2002 St. Open

Rudy Katzl Wins 2002 UCCC Championship

Rudy Katzl scored wins at each stopover on his way to winning the UCCC (Missoula) 2002 Championship. Michael Jensen finished 2nd with a score of 3.5.

Rudy pulled a variety of first-moves out of his bag of openings, including an Alekhine's defense in the crucial 5th round contest with J. Michael.

While the Alekhine is an infrequent visitor, Jensen's "chase variation" is even more rare. The black game proved better but only after a long struggle. J. Michael came back the following week to win the club speed-chess championship. His 5-1 score bested Dan McCourt's 4-2.

Johansson Wins St.

Paddy's by D.Duke

Twelve players came to Billings for the St. Paddy's Day Tournament. State Champ Jan Johansson placed first, followed by Michael Lyon. Former MCN editor, Bill Lynch, came to support the area's first major grand prix tournament in years. Bill did very well coming in third place. In the last round, Bill had the upper hand in a game against Johansson, but came away with a draw due to time pressures.

The tournament had several new players, including Will Clayton and Mark Phillips. Billings hopes to make the St. Paddy's day tournament an annual event.

Five-Valleys Scholastic Championship

By Dan McCourt

Five-valleys scholastic chess had a rousing championship finale April 6, when 33 young chess players came together at the Missoula Children's Theatre. Participants were students from 12 Missoula schools, two Bozeman schools and Corvallis. The five-round event was sectioned into four groups for awards but three groups were used for actual play. Medallions were awarded for the best score at each grade level. Scott Young, an eighth grader, turned in the event's best score with a perfect 5-0-0, winning

the sixth-through-eighth grade group. Mac Widdicome was 4-0-1 for the top score in the fourth-through-fifth grade section. In the first-through-third grade section, Sam Waldorf had the best score, also 4-0-1. Missoula Sentinel junior, Scott Bloomdahl, took the trophy in the ninth-through twelfth section. Garret Hueffed won the first grade medallion and a special award for the youngest participant. Tournament proceeds provided pizza while local businesses helped with drinks, sweet rolls, and trophies.

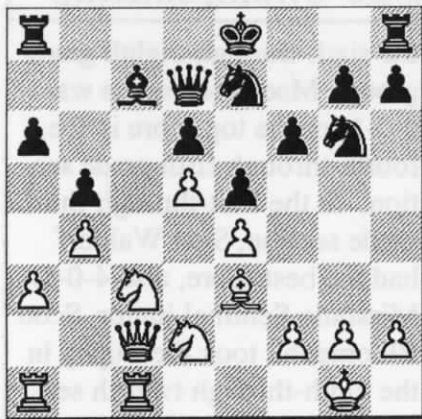
GROUNDHOG GAMES

At the Groundhog Open, held in Bozeman on February 2, 2002 **Jan Johansson** swept the field with a perfect 5-0. Two other players had noteworthy tournaments. **Jesse Gardner-Durbin** and **Conrad Donovan**.

The first game features J. Gardner getting a draw against Michael Long.

Michael Long(1770) - Jesse Gardner-Durbin (1190) [C21]
Groundhog, 2.02.2002

1.e4 e5 2.d4 f6 3.Nf3?! The better move is 3.dxe5 if fxe5, then 4.Qh5+ where Black has to give up major material to keep playing, e.g., 4...g6 5.Qxe5+... 6.Qxh8. 3...Nc6 4.d5 Nce7 5.c4 Ng6 6.Nc3 Bb4 7.Qc2 c6 8.a3 Ba5 9.b4 Bc7 10.Be3 cxd5 11.cxd5 d6 12.Bb5+ Bd7 13.0-0 a6 14.Bxd7+ Qxd7 15.Rfc1 N8e7 16.Nd2 b5



17.a4? White wins a pawn with 17.Nxb5 axb5 18.Qxc7 Qxc7 19.Rxc7. 17...0-0 18.Ne2 (18.Nxb5) 18...Rfc8 19.Qb2 a5 20.axb5 Qxb5 21.Ng3 Rab8 22.Rab1 axb4 Black has won a pawn. 23.Qb3 Ba5 24.h3 Rxc1+ 25.Rxc1 Rc8 26.Rxc8+ Nxc8

27.Nf5 Nge7 28.Ng3 Bb6 29.Nc4 Bxe3 30.Nxe3 Na7 31.Nc2 Qc5 32.Nxb4 White wins back the pawn. 32...Nb5 33.Nd3 Qb6 34.Nb2 g6 35.Nc4 Qc5 36.Ne3 Nd4 37.Qb8+ Kf7 38.Qh8 Ng8? (38...h5) 39.Qxh7+ Score sheets end, later in the game there was a draw by repetition. 1/2-1/2.

In the next game, Jesse goes on to win against **Murray Strong**, but not before Murray gets in some good action. The faster time control, G/50, made for the less than perfect endings. The chess was still a lot of fun.

1.e4 e5 2.Nf3 Nc6 3.a3 Bc5 4.Nc3 d6 5.h3 f5 6.Bb5 a6 7.Ba4 b5 8.Bb3 Nf6 9.exf5 Bxf5 10.d3 h6 11.0-0 b4 12.Nd5 Na5 13.Ba4+ c6 14.axb4 Nxd5 15.bxa5 Fritz says 15.bxc5 is stronger because Black's d pawn cannot capture on c5 and guard e5 at the same time. 15...Bd7

16.Kh1 White should immediately attack in the middle with d4 and try to keep Black's King in the middle. 16...0-0 17.Bb3 Be6 18.d4 e4 19.Nh2 Bb4 20.Bd2 Qf6? White to move and win a piece.



21.c3 While this move works, stonger is 21.Bxd5 followed by 22.Bxb4. 21...Rab8 22.cxb4 Qxd4 23.Bc3 Qa7 24.Bd4 Qe7 25.Bc3 Nxb4 26.Bxe6+ Qxe6 27.Qg4 Qe7 28.Rfe1 Nd3 29.Qxg7+ Qxg7 30.Bxg7 The score sheet stops. Black went on to win the game. 0-1

In the next game, Jesse runs into **Dan McCourt**. Dan wins a piece on move 18, after which the game quickly comes to a conclusion.

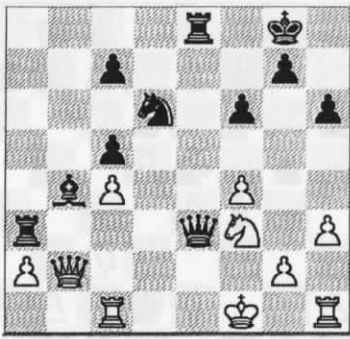
Jesse Gardner-Durbin (1199) - Dan McCourt (1686) [C46]
Groundhog, 02.02.2002

1.e4 e5 2.Nf3 Nc6 3.Nc3 Bb4 4.Nd5 Ba5 5.Bb5 d6 6.h3 Nf6 7.b4 Bb6 8.Bxc6+ bxc6 9.Nc3 a5 10.bxa5 Bxa5 11.Qe2 Ba6 12.Qe3 h6 13.Bb2 Bb6 14.d4 0-0 15.Ba3 Re8 16.Rd1 Qc8 [16...exd4 17.Nxd4 Ba5] 17.Ne2 Black to move and win a piece.



17...Bxe2 18.Qxe2 (If 18.Kxe2, Black still wins a piece with 18...Qa6+ which forks the Ba3 and Ke2.) Rxa3 19.dxe5 dxe5 20.c4 Ba5+ 21.Kf1 Bb4 22.Qb2 c5 23.Nxe5 Qe6 24.f4 Nxe4 25.Kg1 Nd6 26.Rc1 f6 27.Nf3 Qe3+ 28.Kf1

Black to move, mate in 5.



28...Ne4! Threatening 29. .Ng3#. The scoresheets end here., the mate in 5 continues - 29.g4 (to make room for the K) Ng3+ 30.Kg2 Qxf3+ 31. Kh2 Ne2 32.Qxe2 Qxh3#. 0-1

In this next game, **Conrad Donovan** comes on strong to score the biggest upset of the tournament against **Steve Scarff**, who missed his own mating opportunity due to time pressures.

Steve Scarff (1661) - Conrad Donovan (904) Groundhog,

1.d4 d5 2.e4 dxe4 3.Nc3 Nf6 4.f3 Bf5 5.g4 Bg6 6.Bc4 e6 7.h4 h6 8.h5 Bh7 9.g5 hxg5 10.Bxg5 Bb4 11.Qd2 Qd6 12.Bf4 Bxc3 13.bxc3 Qc6 14.Qe2 Qb6 15.Bb3 Bf5 16.Rb1 c6 17.a4 Rxh5 18.Rxh5 Nxh5 White to move and win a piece.



19.Be5?! White wins a piece by 19.Bxb8 Rxb8 20.Qh2 which forks two pieces. 19...Nf6? 20.Qh2! Now White sees the pressure applied by Qh2. White has the double threat of Bxb8 and Qh8+ 20...Ke7 White to move and either win Black's Q or mate.



21.Qh8? White wins Black's Q by 21.Bc7 Nbd7 (forced, e.g. 21. . .Qa6 22.Qd6+ Ke8 23.Qd8#) 22.Bxb6. 21...Nbd7 (21. . .Qd8) 22.Qxa8 Nxe5 23.Ba2 Qa5 24.Rxb7+ Ned7 25.Rb3 Qxa4 26.Bb1 Qa1 27.Qxc6 e3 28.Rb7 e5? (28. . .Bxc2) 29.dxe5 Qa3 30.exf6+ Kd8 White to move, mate in 2.



31.Qc4? The time pressure of G/50 takes it toll. The mate in 2 was 31.Qc7+ Kd8 21.Qc8#. Now Black has a mate in 3, which he executes. 31...Qc1+ 32.Ke2 Qd2+ 33.Kf1 Qf2# 0-1

In the following Groundhog game, **Michael Long** runs into **Sherwood Moore's** Pirc with an ensuing clash on the Queen side.

Michael Long (1770) - Sherwood Moore (1655) [B07] Groundhog,

1.e4 d6 2.d4 Nf6 3.f3 g6 4.Be3 Bg7 5.Qd2 Nbd7 6.Bc4 c5 7.Ne2 0-0 8.Nbc3 Nb6 9.Bb5 a6 [9...c4 10.e5 dxe5 11.dxe5 Qxd2+ 12.Bxd2 Ne8]



10.Ba4? With this move, White loses his Bishop. White could save the Bishop with 10.dxc5 dxc5 11.Qxd8 Qxd8 12.Rxd8 Bxc5. 10...Nc4 11.Qc1 Nxe3 12.Qxe3 b5 13.dxc5 bxa4 14.cxd6 exd6 15.Rd1 Qc7 16.0-0 Bd7 17.Kh1 Rab8 18.b3 axb3 19.cxb3 Rfd8 20.Rc1 Qb6 21.Qd3 Bb5 22.Qc2 Rbc8 23.Rfe1 Nh5 24.Qd2 Bxe2 25.Nxe2 Rxc1 26.Rxc1 d5 27.exd5 Qd6 28.Rd1 Nf6 29.Nc3 Re8 30.g3 Re5 31.f4 Re7 32.Qd3 Ng4 33.Qf3 Ne3 34.Re1 Bxc3 35.Rxe3 Rxe3 36.Qxe3 White resigns.

State Open
June 1-2, 2002
Missoula, MT.

In this final game from the Groundhog, **Sherwood Moore** again plays the Pirc against e4, this time however, he plays **Jan Johansson** who likewise plays the Pirc. The game is very close even to the time scramble at the end of the game.

J. Johansson (2027) - S. Moore (1655) Comments by Johansson.

1.e4 d6 Sherwood has usually played 1...e6 against me, suddenly he plays 1...d6, the move I have been playing for several years myself. I decided to homecook. **2.g3 Nf6 3.Bg2 g6 4.Nc3 Bg7 5.f4!?** Here the best move is d4 but then we would end up in a normal Pirc, f4 forces Black to play his own game. **5...c6 6.Nf3 0-0 7.0-0 Nbd7 8.Kh1 Nc5 9.Qe1 Bg4 10.h3 Bxf3 11.Rxf3** White plays a kind of Closed Sicilian, With d3, g4 f5 to follow. **11...e6 12.d3** White sticks to his plan but the position screams for d4, or even better e5. **12...Ne8 13.f5! exf5 14.exf5 Nf6 15.g4 d5 16.Qh4** (16. Qf2 is better) **16...Qb6** Here Black misses the opportunity to get counterplay with 16...d4 **17. Ne2 Re8 17.Rb1 Rad8 18.Bg5 Ncd7 19.Ne2 Rde8 20.Nf4 Re7**



Because I thought the Re7 was a decisive mistake, I played: **21.Bxf6?**

And I was lucky that Sherwood replied **21...Nxf6?** Because after 21...Bxf6! 22.g5 Bh8 23.f6 Re5 I would have had no attack, no extra piece... nothing but probably 15 minutes less time left. **22.g5** But now the fork on f6 works perfectly. **22...Re3?** Relatively best was 22...Ne8 23.f6 Re5 24.fxg7 Nxc7 23.gxf6 Bh8 Now the game turned into Blitz because White has only 5 minutes left (Black had probably 15+ minutes). When White had 1.5 minutes left Black missed a mate in 3 and resigned. It is amazing that both players were so deluded that they believed that the fork on f6 would work even if Black simply could remove the Bishop on g7 with 21.Bxf6, after which there would not have been anything to fork anymore. If White had seen all this, it would be a perfect swindle, but he believed in it too. 1-0

ST. Paddy's Open

Bill Lynch has not played in a tournament for awhile. The time off does not seem to hold Bill back. In this next game, Bill sics a piece to open up lines to the Black King.

Bill Lynch(1867) - Pat McDonald (1568) [B22]

1.e4 c5 2.c3 Nc6 3.d4 e6 4.Nf3 b6 5.Bd3 Nf6 6.0-0 Be7 7.Qe2 Qc7 8.Na3 a6 9.Bd2 b5 10.Rac1 c4 11.Bb1

Bxa3 12.bxa3 0-0 13.e5 Nd5

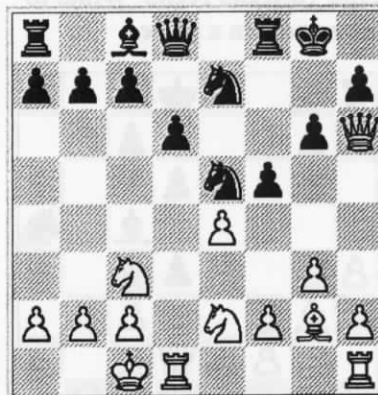


14.Bxh7+! Kh8 (Black actually survives if he takes the Bishop. [14...Kxh7 15.Ng5+ Kg6 16.Qe4+ f5 17.exf6+ Kxf6 18.Nh7+ Kf7 19.Qf3+ Nf6 20.Nxf8 Kxf8] **15.Ng5** (Fritz liked 15.Qe4) **15...f6?** (Fritz says White to move, Mate in 4)(The better move is 15...g6) **16.Qh5** Black resigns. 1-0

Bill Lynch plays the state champ Jan Johansson to a draw.

Jan Johansson (2039)- Bill Lynch(1867) [C25]

1.e4 e5 2.Nc3 g6 3.g3 Bg7 4.Bg2 Ne7 5.d3 d6 6.Nge2 0-0 7.Be3 f5 8.Qd2 Nd7 9.0-0-0 Nf6 10.d4 Ng4 11.dxe5 Nxe5 12.Bh6 Bxh6 13.Qxh6



13...Ng4 14.Qd2 Nxf2 15.e5

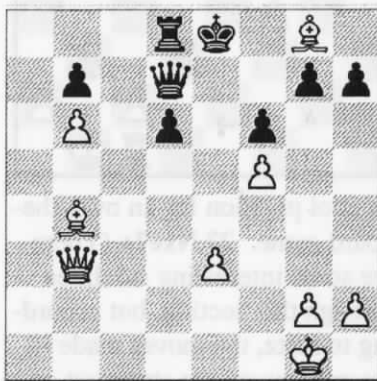
Nxh1 16.Bxh1 This position is one of important of game. Black has succeeded in winning the exchange, but now Black must solve his development problems. Since Black has the two Rooks, Fritz suggests the following line: 16. . .Nc6 17. exd6 Qxd6 18.Qxd6 cxd6 19.Rxd6 Rd8. 16...Be6 17.Nf4 Qd7 18.Qe3 d5 19.Nxe6 Qxe6 20.Nxd5 Rad8 21.Qc5 Nxd5 22.Bxd5 Rxd5 23.Rxd5 Rf7 24.Rd8+ Kg7 25.c4 b6 26.Qd5 Qxd5 27.cxd5 Re7 28.e6 Kf6 29.Rf8+ Ke5 30.Rf7 Kd6 The score sheets end here. The players entered a time scramble after which Black claimed "insufficient losing chances" in a superior position and White accepted the claim as an offer for a draw. ½-½

In this next game, **Patrick McDonald** secures the two Bishops against the lone Rook, and brings home the point. Patrick is a former MCA Board member. He had a good tournament with 3.0 points.

Pat McDonald (1568) - Howard Hoene (1679) [A52]

1.c4 Nf6 2.d4 e5 3.dxe5 Ng4 4.Nf3 Bc5 5.e3 Nc6 6.b3 Ngxe5 7.Nxe5 Nxe5 8.Bb2 Bb4+ 9.Nd2 d6 10.a3 Bxd2+ 11.Qxd2 0-0 12.c5 Be6 13.cxd6 cxd6 14.b4 Qe7 15.Be2 Rfc8 16.0-0 Rc7 17.f4 Ng4? (17. . . .Nc4 forces a White B off the board) 18.f5! Bc4 19.Bxg4 Bxf1 20.Rxf1 f6 21.Rc1 Rd7 22.Bf3 Re8 23.Bd5+ Kf8 24.Be6 Rc7 25.Rc2 Qd8 26.Qc1 Rce7 27.a4 Qb6 28.b5 Qa5 29.Ba3 Qb6 30.Qd2 (30. a5 also works well) 30...Rd8 31.Bb4 Threatening

32.Ba5 which would win Black's Q. 31...Rc7 32.Rxc7 Fritz liked 32.Bc4 followed by 33.Qd5 and Black would have to play Rxc4 to stay in the game a little longer. 32...Qxc7 33.b6? axb6?! (33. . . Qxb6 34.Ba5 Qb1+) 34.a5 Ke8 (34. . . bxa5 35.Ba5 b6 is better for Black) 35.axb6 Qc6 36.Qa2 Qe4 37.Qb3 Qc6 38.Bg8 Qd7



39.Bxd6! Ra8 (not 39. . . Qxd6 40.Qf7#) 40.Bc7 [40.Qd5] 40...Ra1+ 41.Kf2 Qxf5+ 42.Bf4 Qd7 43.Qd5 Qxd5 44.Bxd5 Ra5 45.Bxb7 Rf5 46.Kg3 g5 47.Bc6+ Ke7 48.Bc7 h5 49.b7 h4+ 50.Kg4 1-0

Jim Skovron is the leader in the Grand Prix race. In the next game, Jim plays against **Will Clayton**, who is playing in his first official, rated tournament. Jim plays the Colle System and finally breaks through on the King side.

Jim Skovron (1849) - Will Clayton (Unr) [D00]

1.d4 d5 2.e3 e6 3.Bd3 Nf6 4.f4 Bd6 5.Nf3 Nbd7 6.Nbd2 0-0 7.0-0 c5 8.c3 b6 9.Ne5 Bb7 10.Qf3 Rc8 11.g4 g6 12.Rf2 Ne8 13.Qh3 Ndf6 14.Ndf3 Be7 15.Bd2 Nd6 16.Raf1 Nde4 17.Rg2 Kg7 18.Be1 Rh8 19.Ng5

Rf8 20.Nxe4 dxe4 21.Be2 Nd5 22.g5 cxd4 23.exd4 Bd6 24.Qh6+ Kg8 25.Rg3 f6

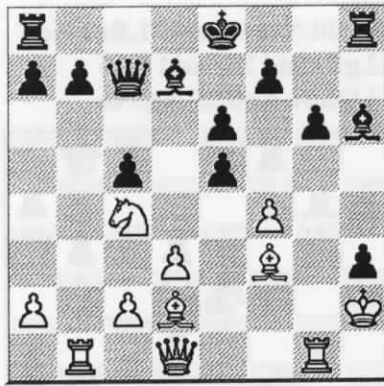


26.Nxg6! (Black cannot take the N, e.g., 26. . . hxg6? 27. Qxg6+ Kh8 28. Rh3#) 26. . . Rf7 27.gxf6 Qxf6 28.Ne5+ Rg7 29.Qxg7+ Qxg7 30.Bh5 Kf8 31.Rxg7 Kxg7 32.Bh4 Rf8 33.Bg3 Ne7 34.Nd7 Rd8 35.Ne5 Nf5 36.Kf2 Bd5 37.Rg1 Kf6 38.Nf7 Rc8 39.Nxd6 Nxd6 40.Bh4+ A legible scoresheet ends here. White won. A good effort on both sides. 1-0

Jan Johansson and **Michael-Lyon** play a sharp game with some tactical flare. Michael sacs a piece for some Kingside play, but the sac does not produce a break through. At the St. Paddy's tournament, Jan placed first and Michael came in second.

Jan Johansson (2039) - Michael Lyon (1872) [B24]

1.e4 c5 2.Nc3 Nc6 3.g3 d6 4.Bg2 Nf6 5.d3 g6 6.Be3 Ng4 7.Bd2 Bg7 8.h3 Nf6 9.Nge2 Bd7 10.0-0 Qc8 11.Kh2 h5 12.Nd5 h4 13.Nxf6+ Bxf6 14.g4 Ne5 15.f4 Nxg4+ 16.hxg4 h3 17.Bf3 Bxg4 18.Nc3 Bd7 19.Nd5 Bxb2 20.Rb1 Bg7 21.Rg1 e6 22.Ne3 Bh6 23.Nc4 Qc7 24.e5 dxe5

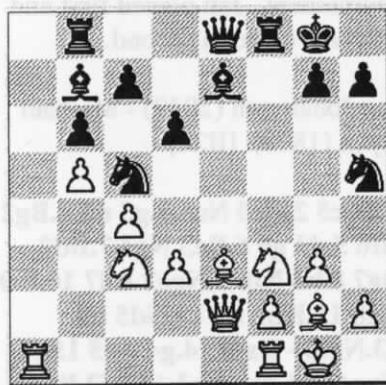


25.Rxb7! Qd8 26.Nxe5 Down a piece and about to lose more material, Black resigns. 1-0

Micheal Lyon and David Duke battle in this next game. Towards the end of the game, after 42 moves, Duke was in time trouble and put his King on the wrong square. Check out the second diagram from this game, pretty cool!

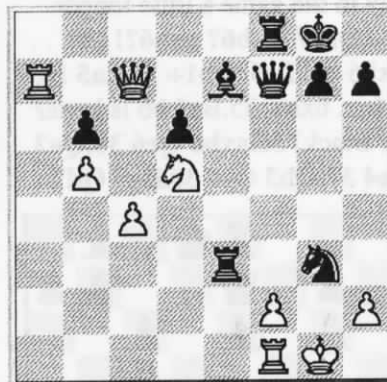
Micheal Lyon (1872) - David Duke (1860) [A21]

1.c4 e5 2.Nc3 d6 3.d3 f5 4.Nf3 Nf6 5.g3 Be7 6.Bg2 0-0 7.0-0 Nc6 8.a3 Qe8 9.e3 Rb8 10.b4 b6 11.Bd2 Bb7 12.b5 Nd8 13.a4 Ne6 14.a5 f4 15.exf4 exf4 16.Qe2 Nc5 17.axb6 axb6 18.Bxf4 Nh5 19.Be3



19...Nxd3! White's Q is overloaded and cannot protect both d3 and Nf3 at the same time.

20.Qxd3 Bxf3 21.Bxf3 Rxf3 22.Qd5+ Qf7 23.Ra7 Rc8 24.Qb7 Rf8 25.Qxc7? Rxe3 26.Nd5 Nxc3!



A cool position for an over-the-board game. 27.Nxe7+ (There are some interesting sidelines through this section, but according to Fritz, the moves made in the game were the strongest on both sides) ... Rxe7 28.Qxe7 Nxf1 29.Qxf7+ Rxf7 30.Ra8+ Rf8 31.Rxf8+ Kxf8 32.Kxf1 Ke7 33.Ke2 Ke6 (33... d5) 34.f4! h5 35.Ke3 d5 36.Kd4 dxc4 37.Kxc4 Kd6 38.Kd4 h4 39.f5 h3 40.Ke4 Kc5 41.Ke5 Kxb5 42.Ke6 Kc5? (The losing move because when White's e pawn becomes a Q on f8, it will become a Q with a check. Black's best move is 42... Kc4 which leads to both sides getting a Q.) 43.Kf7 b5 44.Kxg7 b4 45.f6 b3 46.f7 b2 Black resigns. 1-0

CROCUS OPEN

The Crocus saw a rare occurrence where Greg Nowak, the state's highest rated player lost two games. One of the loss was to Elston Cloy, a Spokane high school senior rated 1850. Unfortunately, the score sheets are not complete and at times the sheets

were difficult to read. The game is a positional battle with play on both sides of the board.

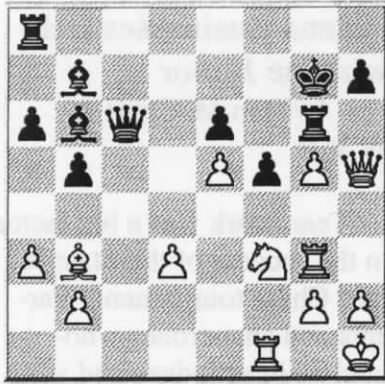
Elston Cloy (1850) - Greg Nowak (2178) [A55]

1.d4 Nf6 2.c4 d6 3.Nf3 c6 4.Nc3 Nbd7 5.e4 e5 6.Be2 Be7 7.0-0 0-0 8.Re1 Re8 9.Bf1 Qc7 10.Qc2 Bf8 11.Ne2 c5 12.d5 g6 13.Ng3 Bg7 14.h3 Nf8 15.Be3 Kh8 16.Nh2 Ng8 17.Rad1 Bh6 18.Bd3 Kg7 19.Ngf1 Qe7 20.a3 Nd7 21.b4 Bxe3 22.Nxe3 Kh8 23.Qb2 Qf6 24.Nhg4 Qg7 25.Nh2 h5 26.Qc2 a5 27.Qa4 Ra6 28.bxc5 dxc5 29.Nf3 Rf8 30.Qc2 Ngf6 31.Nd2 Ne8 32.Nf3 Nd6 The score sheets end here. There is a lot of play left in the game. White went on to win. 1-0

Former state champion, **Michael Jensen** also wins a game against Greg Nowak.

Michael Jensen (1859) - Greg Nowak (2178) [B23]

1.e4 c5 2.Nc3 a6 3.d4 cxd4 4.Qxd4 Nc6 5.Qd1 d6 6.Nf3 e6 7.Bc4 Nf6 8.Bb3 b5 9.a3 Bb7 10.Qe2 Be7 11.0-0 Qc7 12.Bf4 Nd7 13.Rad1 Nde5 14.Nxe5 dxe5 15.Be3 0-0 16.f4 Nd4 17.Bxd4 exd4 18.Nb1 White cannot play 18.Rxd4 because Black would play 18...Bc5 and White would lose the exchange. 18...Bc5 19.Kh1 Kh8 20.Rd3 f5 21.e5 Qc6 22.Nd2 g5 23.fxg5 Rg8 24.Rg3 d3 25.cxd3 Bb6 26.Qh5 Rg6 27.Nf3 Kg7? See diagram at the top of next page.



28.Nh4 (White will win the exchange) . . . Rh8 29.Nxg6 hxg6 30.Qe2 Bd4 31.Re1 Rc8 32.h4 Rh8 33.Rh3 Rh7 34.Qc2 Qxc2 35.Bxc2 Bxb2 36.a4 b4 37.Bb3 Kf7 38.Kg1 Rh8 39.Re2 Bd4+ 40.Kf1 Rc8 41.Bc4 Rc5 42.h5 gxh5 43.Rxh5 Kg7 44.Rh3 Rxc4 45.dxc4 b3 Scoresheet ends 1-0

In Round one, **Richard Stuckey** gets the biggest upset of the tournament with a 531 point difference.

Sherwood Moore (1680) Richard Stuckey (1149) [B32]

1.e4 c5 2.Nf3 Nc6 3.d4 cxd4 4.Nxd4 a6 5.Be2 e5 6.Nb3 Nf6 7.Nc3 Bb4 8.Qd3 d5 9.exd5 Nxd5 10.0-0 Bxc3 11.bxc3 0-0 12.Ba3 Re8 13.Rad1 Nf4 14.Qe3 Qg5 15.Bf3 (15.g3) Nxe2+ 16.Qxe2 Bh3 17.Rfe1] 15...Bh3 16.Kh1? (16.g3) 16...Bxg2+ 17.Bxg2 Qxg2# 0-1

Dave Shughart wins they following game against **Pat Herbers**.

Pat Herbers (1936) - Dave Shughart (1710) [C41]

1.e4 e5 2.Nf3 d6 3.d4 Bg4 4.dxe5 Nd7 5.exd6 Bxd6 6.Be2 Qe7 7.0-0 Ngf6 8.Nc3 0-0 9.Bg5

Bxf3 10.Bxf6 Nxf6 11.Bxf3 Rad8 12.Qe2 Qe5 13.g3 h5 14.Rad1 h4 15.Qb5 hxg3 16.hxg3 Bc5 17.Kg2 g5 18.Nd5 Nxe4 19.Bxe4 Qxe4+ 20.f3 Qxc2+ 21.Kh3 Kg7 22.Nc3 Fritz: Black to move Mate in 6



(22. . .Rh8+ 23.Kg4 Qg6 24.Qd7 Rxd7 25. Rxd7 Qe6+ 26.Kxg5 Be3+ 27. f4 Qg6#) 22...Rh8+ 23.Kg4 Kg6 24.f4 f5+ 25.Kf3 g4# 0-1

In the following game, **Rudi Katzl** presses for an advantage on the Queen side, but **Phillip Weyland** keeps his position and holds on for a draw.

Phillip Weyland (1686) - Rudi Katzl (1907) [E30]
1.d4 Nf6 2.c4 e6 3.Nc3 Bb4 4.Bg5 h6 5.Bh4 c5 6.Rc1 g5 7.Bg3 Nh5 8.e3 Nxc3 9.hxc3 Nc6 10.dxc5 Bxc5 11.Qa4 Qb6 12.Rb1 Bb4 13.Bd3 Ne5 14.Qc2 Qa5 15.Qd2



15. . . b6 (Black can win a pawn by playing 15...Qxa2 16.Nxa2 Nxd3+ 17.Ke2 Bxd2 18.Kxd3 Ba5) 16.Nf3 Bb7 17.Nxe5 Qxe5 18.0-0 Rc8 19.Rbc1 Ba6 20.a3 Bxc3 21.Qxc3 Qxc3 22.Rxc3 d5 23.Rfc1 dxc4 24.Bxc4 Bxc4 25.Rxc4 Rxc4 26.Rxc4 Kd7 27.Kf1 e5 28.Ke2 Kd6 29.Kf3 f5 30.Ke2 b5 31.Rc2 a5 32.b4 axb4 33.axb4 Ra8 34.Rc5 Ra2+ 35.Ke1 Ra1+ 36.Ke2 Ra2+ 37.Ke1 1/2-1/2

On his way to first place, **Elston Cloy** played 2nd place finisher, **Michael Jensen** in round 3.

Elston Cloy (1850) - Michael Jensen (1859) [D34]

1.d4 d5 2.c4 e6 3.Nc3 c5 4.Nf3 cxd4 5.Nxd4 Nc6 6.cxd5 exd5 7.g3 Nf6 8.Bg2 Be7 9.0-0 0-0 10.e3 Be6 11.Nce2 Rc8 12.b3 Qd7 13.Nxe6 fxe6 14.Bb2 e5 15.a3 Qe6 16.b4 a6 17.Qb3 Qf7 18.Rad1 Rcd8 19.f4 e4 20.Nd4 Ng4 21.h3 Nf6 22.g4 Nd7 23.Nf5 Nf6 24.Rf2 Rd7 25.Rfd2 Rfd8 26.Ng3 Kf8 27.Bxf6 Bxf6 28.g5 Be7 29.h4 Nb8 30.Bh3 Rd6 31.Nf5 Rc6 32.Nxe7 Kxe7 33.Qb2 Rcd6 34.Qe5+ Kf8 35.f5 Nc6 36.Qf4 Qe7 37.Bg2 Ne5 Scoresheets end here. 1-0

Michael Jensen and Rudi Katzl play on in the last round of the Crocus.

Michael Jensen (1851) - Rudi Katzl [B06]

1.e4 g6 2.d4 Bg7 3.Nc3 c6 4.Bc4 d5 5.exd5 Nf6 6.dxc6 Nxc6 7.Nf3 0-0 8.0-0 Bg4 9.Be3 e5 10.dxe5 Nd7 11.e6 fxe6 12.Be2 a6 13.h3 Bf5 14.g4 Bxc3

15.Bxc3 Be4 16.Ng5 Nf6
 17.Nxe6 Qxd1 18.Bxd1 Rfc8
 19.Re1 Bd5 20.Nf4 Bf7 21.Bf3
 g5 22.Nd3 h6 23.a4 Bd5
 24.Bxd5+ Nxd5 25.Ra3 Rf8
 26.c4 Nxe3 27.Rxe3 Nd4 28.Ne1
 Rac8 29.c3 Nc6 30.Rb3 Na5
 31.Rb6 Nxc4 32.Rg6+ Kh7
 33.Ree6 Rf7 34.Rxh6+ Kg8
 35.Reg6+ Rg7 36.Nf3 Rc5
 37.Re6 Ra5 38.Nd4 Ne5
 39.Re8+ Kf7 40.Rhe6 Nc6
 41.Nf5 Rg6 42.Nd6+ Kg7
 43.Nxb7 Rxe6 44.Rxe6 Ne5
 45.Nxa5 1-0

UCCC Games

I am not sure which tournament this game comes from. The label says "houseman." This looks like a fun game.

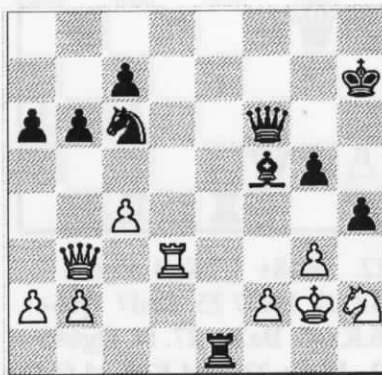
Michael Jensen (1859) - Dan McCourt (1731) [C44]

1.e4 e5 2.d4 exd4 3.Nf3 Nc6 4.c3
 Nf6 5.e5 Ne4 6.Bd3 f5 7.exf6 d5
 8.Bxe4 dxe4 9.f7+ Kxf7
 10.Ng5+ Kg6 11.Nxe4 Qd5



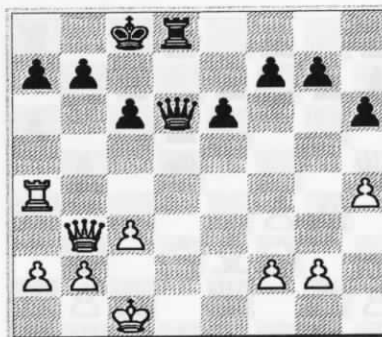
12.Qf3 Bd6 13.h4 h5 14.Bf4?
 14...Bg4! 15.c4 Qe6 16.Qd3
 Bxf4 (Fritz say 16...Nb4 is
 stronger. The text works well
 also) 17.0-0 Bf5 18.Nbd2 Qe7
 19.Qf3 Bxd2 20.Nxd2 Qxh4

21.Qd5 Rhe8 22.Rfe1 Qf6
 23.Nf3 Rad8 24.Qb5 Bc8
 25.Rad1 a6 26.Qb3 b6 27.g3
 Kh7 28.Nh4 g5 29.Nf3 Bg4
 30.Rxe8 Rxe8 31.Rd3 Bf5 (31...
 . Rf8 piles on the pressure, in-
 cluding the pawn on f2) 32.Rd1
 h4 33.Nh2 d3 34.Rxd3 Re1+
 35.Kg2? White lasts a little
 longer with Nf1. Black to move,
 Mate in 2.



35...h3+ 36.Kf3 Be6# 0-1

David Shughart, D (1728) - W.
 McBroom (1630) 3rd Winter
 1.e4 c6 2.d4 d5 3.Nc3 dxe4
 4.Nxe4 Bf5 5.Ng3 Bg6 6.Nf3
 Nd7 7.h4 h6 8.Bf4 Ngf6 9.Bd3
 Bxd3 10.Qxd3 e6 11.0-0-0 Qa5
 12.Qb3 0-0-0 13.Ne5 Nxe5
 14.Bxe5 Ng4 15.Ne4 Nxe5
 16.dxe5 Be7 17.Nd6+ Bxd6
 18.exd6 Rd7 19.Rd4 Rhd8
 20.Ra4 Qc5 21.Rd1 Rxd6
 22.Rxd6 Qxd6 23.c3 Black to
 move, mate in 3



23...Qd2+ 24.Kb1 Qe1+ 1-0

Helena Businesses Help with the Junior

by Dan McCourt -
 W.V.P.

Teamwork was a big factor in the success of the State Junior Chess tournament. Parents and chaperones who pitched in as judges and administrators, kept us on the sane side of chaos.

At the same time, local businesses really helped us to provide a tournament with plenty of amenities (food and drink for the ravenous youth) and a financial cushion.

American Federal Savings and Grimes Motors gave hard cash that enabled the MCA to provide a tournament with low entry fees and nice prizes. Taco Johns provided gift certificates so that all participants came away with something. County Market donated drinks and fruit . . . a very welcome change from doughnuts and sweetrolls. And Pizza Hut of Helena really did us a good job. They gave us six free pizzas, by comparison, we can't even get one free pizza in Missoula.

So if you live in Helena, or if you visit there on occasion, do patronize our patrons. They deserve our support.

MCA thanks
 Finnegan's Family
 Restaurant
 for its support of the
 67th Montana Open

RECENT EVENTS

Crocus Open 2002 - Missoula UCCC

#	Name	Rting	Rd 1	Rd 2	Rd 3	Rd4	Rd5	Tot
1	Elston Cloy	1850	W10	W13	W2	D4	W5	4.5
2	J.Michael Jensen	1859	W8	W5	L1	W7	W4	4.0
3	Phillip Weyland	1686	W15	D4	L5	X14	W9	3.5
4	Rudolf Katzl	1920	W14	D3	W7	D1	L2	3.0
5	Gregory Nowak	2178	W9	L2	W3	W6	L1	3.0
6	Patrick Herbers	1936	W11	L7	W8	L5	W10	3.0
7	David Shughart	1710	W16	W6	L4	L2	D8	2.5
8	David Griffin	1441	L2	W16	L6	W12	D7	2.5
9	William McBroom	1640	L5	W12	H	W11	L3	2.5
10	Ronald Weyland	1378	L1	W11	L14	W15	L6	2.0
11	M. Stubblefield	1594	L6	L10	W13	L9	W15	2.0
12	Scott Young	1305	L17	L9	W19	L8	W16	2.0
13	Richard Stuckey	1149	W18	L1	L11	L16	W19	2.0
14	Karl Schmitz	1516	L4	W15	W10	F3	U	2.0
15	Mike Shuyler	1254	L3	L14	W16	L10	L11	1.0
16	Thomas Wacker	1300	L7	L8	L15	W13	L12	1.0
17	Ron Erickson	1752	W12	U	U	U	U	1.0
18	Sherwood Moore	1680	L13	H	U	U	U	0.5
19	Jim Cadwallader	714	U	U	L12	U	L13	0.0

Saint Patrick's Day Open - March 16, 17, Billings - G/90

#	Name	Rting	Rd 1	Rd 2	Rd 3	Rd4	Rd5	Tot
1	Jan Johansson	2039	W7	W4	W2	W5	D3	4.5
2	Michael Lyon	1872	W9	W3	L1	W4	W5	4.0
3	Bill Lynch	1867	W6	L2	W10	D9	D1	3.0
4	David Duke	1860	W12	L1	B	L2	W9	3.0
5	Jim Skovron	1849	W11	W10	W8	L1	L2	3.0
6	Patrick McDonald	1568	L3	W12	L7	W8	W10	3.0
7	Ronald Erickson	1750	L1	L8	W6	X11	H	2.5
8	Justin Bartlow	1516	H	W7	L5	L6	W12	2.5
9	Dan McCourt	1731	L2	W11	H	D3	L4	2.0
10	Howard Hoene	1679	H	L5	L3	W12	L6	1.5
11	Will Clayton	Unr	L5	L9	W12	F7	U	1.0
12	Mark Phillips	Unr	L4	L6	L11	L10	L8	0.0

2002 Montana Junior Open (9-12) Championship

#	Name	Grade	Rd 1	Rd 2	Rd 3	Rd4	Rd5	Tot
1	Scott Young	8	W13	W11	W2	D3	W6	4.5
2	Paul Moe	11	W5	W4	L1	W10	W3	4.0
3	Randy Standley	9	W9	W6	W4	D1	L2	3.5
4	Mike Shuyler	10	W7	L2	L3	W5	W10	3.0
5	Kirk Lundby	7	L2	W10	W8	L4	W7	3.0
6	Sam Harkness	9	W10	L3	W13	D7	L1	2.5
7	Ryan Stutzman	10	L4	W13	W11	D6	L5	2.5
8	Steve Young	11	L11	W9	L5	L12	W13	2.0
9	Sean Jenson	11	L3	L8	L10	W13	W12	2.0
10	Joshua Miller	9	L6	L5	W9	L2	L4	1.0
11	Kinney Miles	11	W8	L1	L7	U	U	1.0
12	Jason Ames	9	U	U	U	W8	L9	1.0
13	Andrew Bell	9	L1	L7	L6	L9	L8	0.0

2002 Montana Junior 6-8 Grade Championship

#	Name	Grade	Rd 1	Rd 2	Rd 3	Rd4	Rd5	Tot
1	Alan Cartwright	8	W11	W5	W2	W3	W4	5.0
2	Devin Rule	8	W10	W3	L1	X	W6	4.0
3	Gavin Drake	6	W4	L2	W8	L1	W7	3.0
4	Virginia Duke	7	L3	W11	W9	W6	L1	3.0
5	Hess-Homeier	6	W7	L1	L6	W9	W10	3.0
6	James Burdick	7	L8	W10	W5	L4	L2	2.0
7	Michael Lutman	8	L5	L8	B	X	L3	2.0
8	Justin Berns	7	W6	W7	L3	F	U	2.0
9	Corbin Myers	7	U	B	L4	L5	B	2.0
10	Rick Pembroke	7	L2	L6	L11	B	L5	1.0
11	Chris Freistadt	7	L1	L4	W10	F	U	1.0

2002 Montana Junior 4-5 Championship								
#	Name	Grade	Rd 1	Rd 2	Rd 3	Rd4	Rd5	Tot
1	Stan Duke	5	W3	W4	W6	W5	L2	4.0
2	Ethan Tilly	2	L5	W7	W8	W6	W1	4.0
3	Andy Erickson	5	L1	W10	W7	W9	W5	4.0
4	Vegan Murphy	5	W10	L1	L5	W8	W6	3.0
5	Patrick Fish	5	W2	L6	W4	L1	L3	2.0
6	Mac Widdicombe	5	W9	W5	L1	L2	L4	2.0
7	Ryan Swenson	5	W8	L2	L3	W10	L9	2.0
8	Riley Griffin	5	L7	W9	L2	L4	W10	2.0
9	Danielle Drake	4	L6	L8	W10	L3	W7	2.0
10	Owen Harwell	5	L4	L3	L9	L7	L8	0.0

2002 Montana Junior K-3 Championship								
#	Name	Grade	Rd 1	Rd 2	Rd 3	Rd4	Rd5	Tot
1	Dylan Allen	2	W3	W5	W2	W7	W6	5.0
2	Connor Sullivan	2	W10	W8	L1	D6	W5	3.5
3	Ted Harwell	2	L1	D4	W9	W8	W7	3.5
4	Dalton Allen	3	L8	D3	W10	D5	W9	3.0
5	Marcus Rose	3	W6	L1	W8	D4	L2	2.5
6	Rylan Boggs	3	L5	W9	W7	D2	L1	2.5
7	Nicholas Swenson	2	W9	W10	L6	L1	L3	2.0
8	Ty Harwell	2	W4	L2	L5	L3	B	2.0
9	Gavin Johnson	2	L7	L6	L3	B	L4	1.0
10	Jake Brodsky	3	L2	L7	L4	U	U	0.0

MacKenzie River Pizza Chess - March 9, 2002								
#	Name	Rtng	Rd 1	Rd 2	Rd 3	Rd4	Rd5	Tot
1	Han Anderson	1715	W5	W4	W6	W3	L2	4.0
2	Greg Nowak	2178	W10	B	—	W5	W1	4.0
3	Mike Stubblefield	1599	W9	W8	W4	L1	D6	3.5
4	Miles Kinney	1307	L1	W11	W9	L2	W7	3.0
5	Bob Leader	1502	W11	W7	L1	L4	D3	2.5
6	Bob Hayes	1251	L4	L6	W10	W9	L5	2.0
7	Ben Anderson	Unr	—	L3	W11	W10	L4	2.0
8	Ken Westphal	1097	L3	W10	L5	L7	W10	2.0
9	D. Hess-Homeier	860	L2	L9	L7	L8	L9	0.0
10	Andy Baskitt	Unr	L6	L5	L8	—	—	0.0

UCCC (Missoula) Championship 2002								
#	Name	Rtng	Rd 1	Rd 2	Rd 3	Rd4	Rd5	Tot
1	Rudolf Katzl	1910	W3	W6	W5	W4	W2	5.0
2	Michael Jensen	1851	X	W4	D3	W5	L1	3.5
3	William McBroom	1640	L1	L5	D2	W6	W4	2.5
4	Daniel McCourt	1731	W5	L2	W6	L1	L3	2.0
5	Sherwood Moore	1686	L4	W3	L1	L2	F	1.0
6	Scott Young	1305	F	L1	L4	L3	X	1.0

UCCC Quick Chess Tourney, March 14, 2002 (Round Robin)								
#	Name	Rtng	# 1	# 2	# 3	# 4	# 5	Tot
1	Rudolf Katzl	1921	X	1	1	.5	1	3.5
2	Michael Jensen	1873	0	X	1	1	1	3.0
3	Sherwood Moore	1653	0	0	X	1	1	2.0
4	Daniel McCourt	1718	.5	0	0	X	1	1.5
5	William McBroom	1584	0	0	0	0	X	0.0

Third Winter Open - UCCC Missoula						
#	Name	Rtng	Rd 1	Rd2	Rd3	Tot
1	Ron Erickson	1735	W4	B	D3	2.5
2	William McBroom	1584	B	D3	W6	2.5
3	Rudolf Katzl	1921	D6	D2	D1	1.5
4	Daniel McCourt	1686	L1	U	W7	1.0
5	Michael Jensen	1873	U	W6	U	1.0
6	David Shughart	1728	D2	L5	L3	0.5
7	Thomas Wacker	UNR	U	U	L4	0.0

Anderson and Nowak Share First by Greg Nowak

On March 9th, eleven hungry chess warriors had good ches fun devouring pizza and hopefully their oppenent. Hans Anderson and Greg Nowak shared 1st place, Mike Stubblefield took 2nd with 3.5 points out of 5. Dan McCourt and Miles Kenney took 3rd. Miles took the junior prize. I played along as a houseman and did not take prizes. The event was a success and will be an annual event.

Coming Events

May 27, 2002 - Spring Flick "Quick" - Missoula

Format: Round Robin, G/15. (U.S.C.F. rated) **Site:** Clandestine Chess Club, 125 West Main (down the hallway) Missoula, MT **EF:** \$7 early, \$10 door. **Prizes:** Based on \$42 in entries, 1st - \$8, 2nd - \$6, a 3rd if \$50 entries. **Rnds:** 7:00 p.m. **Entries to:** Greg Nowak P.O. Box 8572, Missoula, MT. 59807 or in person - Clandestine Chess Club, 125 West Main (down the hallway) Missoula, MT. - 6:00 to 7:00 pm., Mon. - Fri.

June 1,2 2002 - 67th Montana State Open - Missoula

Format: 5rd Swiss, G/2. Computer pairings. Open to all **Site:** Missoula Children's Theatre, 401 East Broadway, Missoula. **EF:** \$20 by 5/31, \$25 Site, Jrs. 1/2. **Awards:** Trophies to top overall, top MT. Sr., top MT. Jr., and to top Class C, D, and E/below \$b/45, more if entries exceed 50: Expert/above, Class An, Class B \$70 1st, \$30 2nd. Three biggest upsets, \$40-30-20. **Registration:** Sat. 8-9:15 am. **Rnds:** Sat. 10:00 am., 2:30 pm., 7:00 pm., Sun. 9:00 am., 3:00 pm. **Entries to:** Dan McCourt, 608 West Central, Missoula, MT. 59801. Ph. 406-721-0254, dmcc@micro-mania.net. Phone/e-mail ents accepted but must check in by 9:15 am unless 1st round bye was requested. PayPal entries: [Paypal.com/refer/pal=dmcc%40micro-mania.net](https://www.paypal.com/refer/pal=dmcc%40micro-mania.net). **Special:** 1/2 point bys available, byre for rds. 4 or 5 must be requested before players 1st game. NS, NC, W.WEB

June 15, 2002 — 9th Greater Northwest Team Tourney - Missoula

Format: 5 rd Round Robin, G/30. **Site:** The Double Front Restaurant, 122 West Alder (upstairs), Missoula, MT. **EF:** Team - \$35 by May 31, \$42 June 1 thru June 8, \$50 at the door. Individual - \$9 by May 29, \$11 by June 1, \$13 by June 8, \$15 at the door. Players under age 17 - \$2 less. **Prizes:** Winning team equally shares top team pot. Based on 24 entries, 1st place get \$15 each, 2nd gets \$5 each. Also best board prizes (\$5). **Registration:** 11:00-11:15 am. **Rnds:** 11:45 am, 1:15 pm., 2:35 pm., 3:50 pm., 5:05 pm., Rd. 6 if necessary. **Entries to:** Greg Nowak, P.O. Box 8572, Missoula, MT. 59807 or in person - Clandestine Chess Club, 125 West Main (down the hallway) Missoula, MT. - 6:00 to 7:00 pm., Mon. - Fri. **Special Instructions:** Pre-entered teams that don't show up complete by 11:45 dissolve and go in the pool (bring bathing suits just in case one of your team members fails to show), Individuals must be present by 11:30 or lose their entries. Teams may use subs without charge.

TBA - State Closed.

TBA - Barto Memorial Tournament

TBA - Chinook Open - Great Falls, MT. - usually in September or October.

Let the Editor know of your chess event,

Montana Chess Association

David Duke
 P.O. Box 3052
 Billings, MT 59103

Coming Events



10/02

Dan McCourt
 608 W. Central
 Missoula, MT 59801



Volume 27, Issue 2 — May, 2002

Deep Thought Chess Challenge - May 4 - G/25								
#	Name	Rting	Rd 1	Rd 2	Rd 3	Rd4	Rd5	Tot
1	Greg Nowak	2039	W8	B	W4	W2	W3	5.0
2	Rajish Basharan	UNR	W10	W13	W9	L1	W5	4.0
3	Paul Michell	1701	L6	W11	W12	W4	L1	3.0
4	Scott Stanley	1467	W12	W6	L1	L3	W7	3.0
5	Don Robinson	1350	W7	L9	W6	W12	L2	3.0
6	Buck Wallace	UNR	W3	L4	L5	W11	W9	3.0
7	Jack Hamlin	UNR	L5	W8	W13	W9	L4	3.0
8	Ken Schultz	1315	L1	L7	B-.5	W13	W11	2.5
9	Karl Schmitz	1520	W12	W5	L2	L7	L6	2.0
10	John Hay	1460	L2	L12	L11	B	W13	2.0
11	Pat Todd	UNR	L9	L3	W10	L6	L8	1.0
12	Rick Gold	UNR	L4	W10	L3	L5	—	1.0
13	Dave Rinehold	1384	B-.5	L2	L7	L8	L10	0.5

This year's Montana State Open would not have been feasible without the generous donations from area merchants.

The MCA thanks:

Thunderbird Hotel
 10% discount to Chess Players

Del's Place
 Burgers, Sandwiches, Shakes, Malts
 Across the street.

Finnegan's Family Restaurant
 Great place for breakfast before Rd. 4!
 700 East Broadway

Joseph's Oriental Rugs
 839 S. Higgins Ave.
 These folks help chess all the time.
 Oriental Rugs, Gems, Unusual Fossils