

# MONTANA CHESS NEWS

MAR. -APR. -MAY, 1991 VOLUME XVI-ISSUE 2

## HEIKKINEN CLINCHS GRAND PRIX - THEN HEADS FOR OLD TUCSON

After placing second in the Valentine Open to build an insurmountable lead in the 1990-1991 Grand Prix Race, one of Montana's hottest players looks to be getting even hotter as Phil has taken the position of Micro-Processor Systems Coordinator at the Tucson-Pima Library in Arizona. Phil left at the end of March with his five year old son Wilho and took with him the best wishes of the regions chess players. With Phil gone, his 75,68 GP total gives way to Paul Motta (at 54.35 following his Crocus win) and Zygmund Mayer (46.89) who will Qualify into the Championship Playoff. Their closest pursuer, Mike Jensen, at 27.66 cannot catch up. Other point totals through the Crocus are: Kip Stubberud 20.75; Nick Pazderic 17.44; Greg Nowak 15.48; Kip Limesand 15.15; Arman Goplen 12.92; and Steve Scarff 10.24 rounding out the top ten.

## HIGH SCHOOL TOURNAMENTS UNDERWAY

Six regional qualification tournaments have or soon will be completed to determine the qualifiers for the State High School Championship, a round robin event to be held in conjunction with the Montana Open. This fledgling effort will hopefully become the forerunner of an annual process, which will gradually expand to other age scholastic groups as interest and support gather. It is hoped that USCF support with a local boost will enable the Montana High School Champion to compete at the Tournament of HS Champions which is now conducted annually at the U.S. Open Chess Tournament. To date, winners are reported for the West Region - Richie Harris of Missoula, the West Central Region - Jeremy Casey of Helena, and the Southwest Region - Seth Borland of Bozeman. Turnouts have been small, but there are signs that additional schools are becoming aware of the opportunity for competition.

## CONSTITUTION ENCLOSED

The newly revised Constitution of the Montana Chess Association, ratified by the Board of Directors, is included with this issue for the consideration of the members. Those who are currently eligible voting members will also receive a return addressed postcard with which to vote on adopting, or rejecting, the new Constitution. It is hoped that a majority of the cards can be received back before the Montana Open, but in any event cards must be return postmarked by May 31, 1991 in order to be counted.

## IDAHO-MONTANA MATCH A BIG SUCCESS ??

The interstate match with Idaho came off rather well despite threatening weather and a last minute scramble which saw Wyoming's Ron Matous filling in on Board 3 for Montana. There were 8 boards in all - nominally 2 Expert, 2 "A", 2 "B", and 2 "C". The playing site was good, and the arrangements quite good (free breakfast with a room, and a good buffet lunch for \$5), which left only the playing to worry about. Despite a rating deficit on almost every board Montana took a 5-3 lead in Round 1 - only to be "blown away" Rounds 2 and 3, when nearly everyone squandered winning opportunities. The final tally was Idaho 14.5 - Montana 9.5. Everyone who participated relly enjoyed the contest and especially seeing some "new faces" and different styles of play.

To the members of the Montana Chess Association:

In this special issue of Montana Chess News you are being presented with a copy of the new, revised MCA Constitution for your review and approval.

A constitution is the cornerstone of an organization that has a purpose and goals. In the case of the Montana Chess Association, the purpose is primarily to promote chess in Montana. The constitution provides a working formula for achieving that goal.

The MCA Constitution covers the following:

- The purpose of the organization.
- The sources of income for the association and how that income is used.
- The rights & obligations of members.
- The provisions for the governing of our association and the duties of our elected officers.
- The Annual Meeting, where many ideas are discussed and projects for the upcoming year are planned.
- The official newsletter, which is the main vehicle of communication between our members.
- The amending of our Constitution.

The members of the Constitution Committee and myself realize that our association is growing and changes are necessary now and will be in the future. Knowing that, we have tried to streamline our Constitution to accommodate the current and anticipated needs of our organization.

It is very important for you all to read through and understand the new Constitution. Your vote will bring into existence the changes that will enable the MCA to function more efficiently and reach the goals of our association. A majority vote (at least two-thirds) of the *resident* members is needed to make this new Constitution a reality, so each member's vote is extremely important and critical.

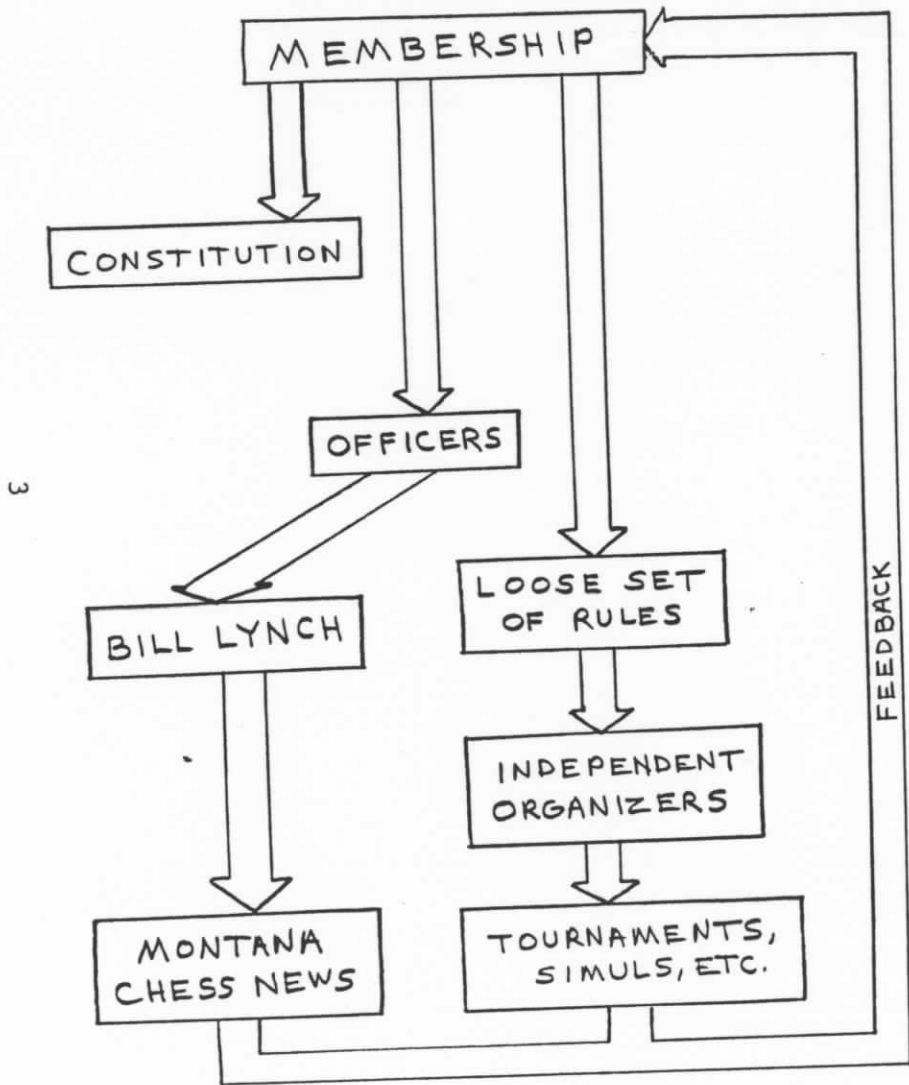
An addressed & stamped ballot (postcard) is enclosed. Please read through the Constitution and then cast your vote. (We would like to have all the votes in by May 31). If you have any questions please don't hesitate to call me at 682-7333.

Yours for chess,

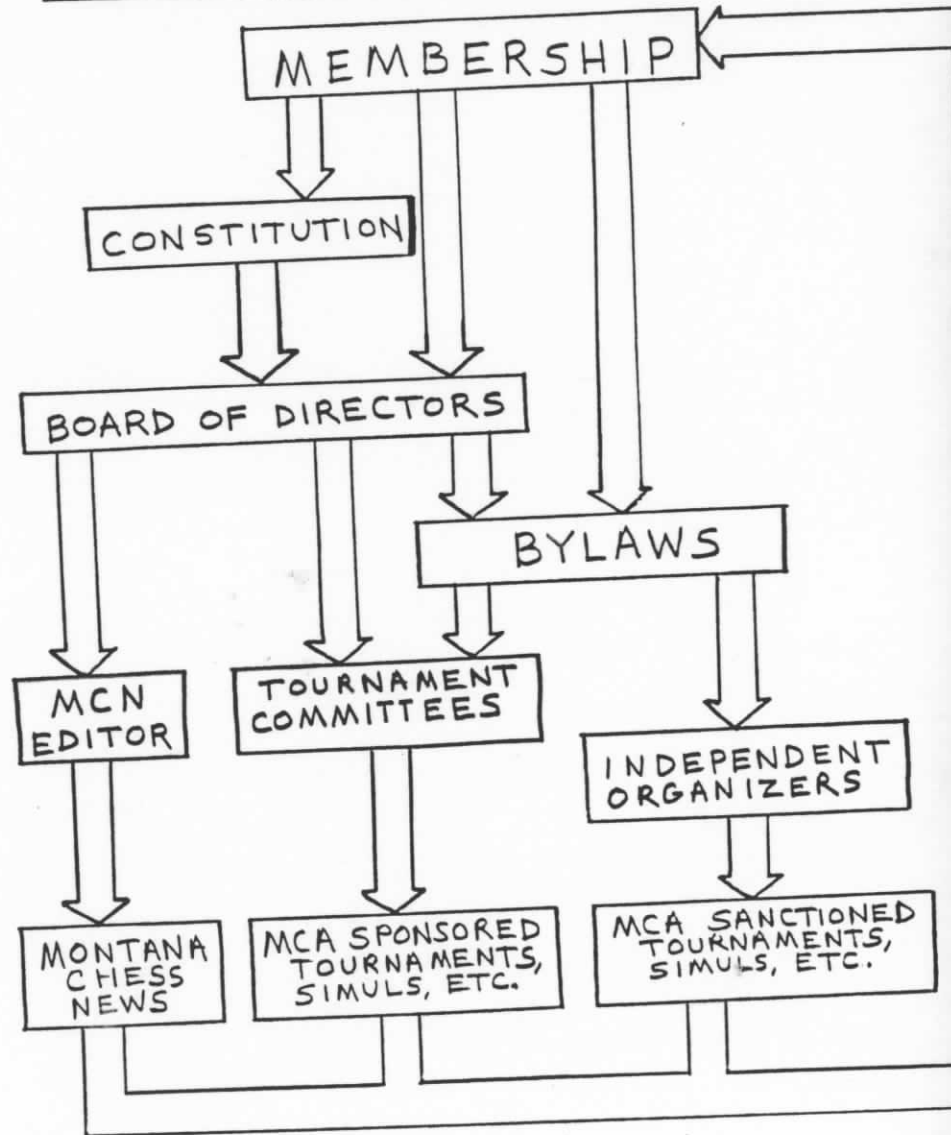


Paul S. Motta  
PRESIDENT  
MONTANA CHESS ASSOCIATION

# THE OLD MCA STRUCTURE



# THE NEW MCA STRUCTURE



VALENTINE OPEN

February 16-17, 1991

P1 Name	Rate	RD1	RD2	RD3	RD4	RD5	TOT
1 Mike Jensen	1994	W10	W9	W4	D2	W6	4.5
2 Phil Heikkinen	2084	W13	W5	W6	D1	D3	4.0
3 Ron Matous	1956	W12	L6	W7	W11	D2	3.5
4 Greg Nowak	2141	W11	W15	L1	D9	W10	3.5
5 Bob Phillips	1778	W16	L2	D10	W15	W9	3.5
6 Arman Goplen	1722	W19	W3	L2	W7	L1	3.0
7 John Carr	1864	W8	W14	L3	L6	W15	3.0
8 Richie Harris	1428	L7	L13	W19	W12	W11	3.0
9 Dan McCourt	1758	W17	L1	W12	D4	L5	2.5
10 Tom Mostad	1583	L1	W16	D5	W13	L4	2.5
11 Bill McBroom	1695	L4	W17	W14	L3	L8	2.0
12 Todd Sherwood	1439	L3	W19	L9	L8	W17	2.0
13 Gregg Ford	1636	L2	W8	U--	L10	W14	2.0
14 Lyle Petersen	1403	W20	L7	L11	W16	L13	2.0
15 Ron Erickson	1791	U--	L4	W17	L5	L7	1.0
16 Richard Stuckey	1204	L5	L10	L18	L14	W19	1.0
17 Bob Rajala	1200	L9	L11	L15	W19	L12	1.0
18 Sherwood Moore	1590	U--	U--	W16	U--	U--	1.0
19 Seth Stuckey	1058	L6	L12	L8	L17	L16	0
20 Dave Shughart	1841	L14	U--	U--	U--	U--	0



Mike Jensen's 4 victories and 1 draw earned clear first in Missoula's Valentine Open. Second place went to Phil Heikkinen with the only 4.0 score. Ron Matous edged Greg Nowak and Bob Phillips on tie breaks for third place. Lyle Petersen notched the biggest upset with a 1st round win over Dave Shughart. Best score for a player rated under 1700 went to Richie Harris who scored 3 consecutive wins after opening losses.

It was a fun tourney with a nice balance of local and out-of-town players.

Thanks to all who attended and a special tip of the hat to 'house' players Dave Shughart and Sherwood Moore who stood by so that no other players had to stand 'Bye'.

Having taken a year off from directing tournaments, I was surprised at how many players have returned to the early Phoenician chess notation. Or maybe it's just a decline in the legibility factor. In any case, the following games are transcribed as accurately as possible from the original scoresheets.

Biggest Upset Shughart-Petersen RD1 Sicilian White plays the tricky but unsound Stevensville attack on the f-file. Black's steady defense wins the day and the prize.  
 1 e4 c5 2 Nf3 Nc6 3 d4 cxd4 4 Nxd4 Nxd4 5 Qxd4 e6 6 Be3 d6 7 Nc3 a6 8 Be2 Nf6 9 O-O Be7 10 Rad1 O-O 11 e5 dxe5 12 Qxe5 Nd7 13 Qh5 Qc7 14 Bd3 Nf6 15 Qf3 Bd7 16 Ne4 Bc6 17 Nxf6+ Bxf6 18 Qh3 g6 19 c3 Bg7 20 f4 Rad8 21 f5? exf5 22 Bd4? Bxd4 23 cxd4 Rxd4 24 Qe3 Rfd8 25 Rxf5? Be4! 26 Rf4 Rxd3! 27 Rxd3 Bxd3 28 Rh4 f5 29 Qe6+ Kg7 30 Qe3 Be4 31 White Resigns.

Jensen-Nowak RD3 This king-pawn opening slides into the Hanham Variation of Philadors Defense with an East Milwaukee flair. Black's attack wins a pawn but white's penetration leads to tactical opportunities that carry the day.

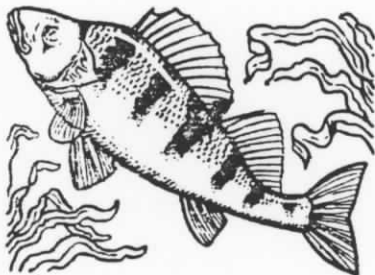
1 e4 e5 2 Nf3 d6 3 Bc4 h6 4 O-O Nf6 5 d4 Nbd7 6 Nc3 c6 7 a4 a5 8 h3 g5 9 dxe5 dxe5 10 Nh2 Rg8 11 Ng4 Nxe4 12 hxe4 Qf6 13 Ne2 Nb6 14 Bb3 Bxe4 15 Be3 Nd7 16 f3 Be6 17 Bxe6 Qxe6 18 Ng3 Bd6 19 Nf5 Bc7 20 Qe2 Rg6 21 Rfd1 g4 22 Rd3 gxf3 23 Qxf3 O-O-O 24 Rad1 Qe8 25 Bxh6 Bb6+ 26 Be3 Bc7 27 b3 Qf8 28 Bf2 Re6 29 Bh4 f6 30 Bf2 Qb4? 31 Qg4 b6 32 Rxd7 Rxd7 33 Qg8+ Rd8 34 Qxe6+ Kb7 35 Rxd8 Bxd8 36 Nd6+ Ka7 37 Qd7+ Black Resigns.

McBroom-Matous RD4 Reti-London System Black sacs a bishop for a winning position.  
 1 Nf3 d5 2 g3 Nf6 3 Bg2 Bf5 4 c4 c6 5 b3 e6 6 Bb2 Nbd7 7 O-O Bd6 8 d3 Qe7 9 a3 O-O 10 Nh4 dxc4 11 Nxf4 exf4 12 dxc4 f4 13 b4 fxe3 14 hxe3 Rad8 15 Qc2 Bxe3 16 fxe3 Qe3+ 17 Kh1 Qh6+ 18 Kg1 Ng4 19 Rf4 Qh2+ 20 White Resigns.

Heikkinen-Jensen RD4 Caro-Kann White's tripled queenside pawns are offset by an initiative that lands two piggy rooks on the seventh rank. They don't gobble (cont. page 5)

or long as black is saved by a nasty knight-fork. The endgame is too scary: they left it for you to figure out.

1 e4 c6 2 d4 d5 3 Nc3 dxe4 4 Nxe4 Nbd7 5 Nf3 Nf6 6 Ng3 e6 7 Be2 c5 8 O-O cxd4 9 Nxd4 Bc5 10 Nb3 Be7 11 Bf3 O-O 12 Re1 Qc7 13 Nf5 Bb4 14 c3 exf5 15 cxb4 Nb6 16 Bd2 Be6 17 Rcl Qd6 18 Bxb7 Bxb3 19 axb3 Rad8 20 Bc3 Nfd5 21 Qd4 Nxc3 22 Qxd6 Ne2+ 23 Rxe2 Rxd6 24 g3 g6 25 Bg6 Rfd8 26 Rc7 R6d7 27 Re7? Rd1+ 28 Bf1 Nd5 29 Rxa2 Nxe7 30 Rxe7 Rb1 31 Kg2 Rxb2 32 Re3 Rdd2 33 Rf3 Kg7 34 b5 Kf6 35 g4 Rd5 36 Rc4 Rd6 37 gxf5 gxf5 38 Rh3 Kg7 39 Rg3+ Kf6 40 Rh3 Kg7 41 Rg3+ Draw.



Matous-Heikkinen RD5 Colle-King's Indian Defense Black grabs the initiative but a hasty f-pawn advance gives white too much counterplay.

1 d4 Nf6 2 Nf3 g6 3 e3 Bg7 4 Bd3 O-O 5 O-O d6 6 Nbd2 Nc6 7 c3 Re8 8 Qc2 e5 9 dxe5 dxe5 10 e4 Nh5 11 Rd1 Nf4 12 Bf1 Qf6 13 Nc4 Be6 14 Bxf4 exf4 15 Ncd2 Qe7 16 Nb3 Bg4 17 Re1 Bxf3 18 gxf3 Ne5 19 Bg2 Qg5 20 Kh1 Qh5 21 Qe2 Rad8 22 Rad1 f5? 23 Nc5 Rxd1 24 Qxd1 fxe4 25 Qd5+ Nf7 26 Qxh5 gxh5 27 fxe4 b6 28 Nb3 Draw.

Game selection and notes by Dan McCourt. "?" and "!" are from the players (mostly). Thanks again for supporting UCCC tournaments.

\*\*\*\*\*

CROCUS OPEN

April 6-7, 1991

Pl Name	Rate	RD1	RD2	RD3	RD4	RD5	TOT
1 Paul Motta	2073	W12	W7	W9	D2	W4	4.5
2 Greg Nowak	2141	D7	W4	W3	D1	W5	4.0
3 Mike Jensen	1992	W5	W13	L2	D9	W7	3.5
4 Kip Limesand	1723	W19	L2	W8	W12	L1	3.0
5 Tom Mostad	1583	L3	W18	W13	W8	L2	3.0
6 Thad Suits	1927	L11	L8	W15	X16	W9	3.0
7 Bill McBroom	1695	D2	L1	Bye	W10	L3	2.5
8 Dan McCourt	1758	D10	W6	L4	L5	W11	2.5
9 Arman Goplen	1722	W18	W11	L1	D3	L6	2.5
10 Lyle Petersen	1396	D8	W16	L12	L7	W18	2.5
11 Richie Harris	1504	W6	L9	L14	W13	L8	2.0
12 Dennis Petrak	1656	L1	W15	W10	L4	WD	2.0
13 John Butler	UNR	X16	L3	L5	L11	W15	2.0
14 Sherwood Moore	1643	U--	W19	W11	U--	U--	2.0
15 Todd Sherwood	1472	L17	L12	L6	W18	L13	1.0
16 Vijay Srao	UNR	F13	L10	W18	F6	WD	1.0
17 Ron Erickson	1791	W15	WD	--	--	--	1.0
18 Carl Jacobs	1212	L9	L5	L16	L15	L10	0
19 Don Price	1396	L4	L14	WD	--	--	0

Paul Motta survived a double adjournment start which resulted in finishing his Saturday games at 4am on Sunday - to hold a draw against top rated newcomer Greg Nowak - and take clear first with 4.5. Nowak finished alone in second place with four, having given up a draw to Bill McBroom in round 1. Jensen was third at 3.5, while 3 points gave Tom Mostad best under 1700. Lyle Petersen was best under 1500 at 2.5

RD1 BD1 Nowak-McBroom NIMZOVITCH-LARSEN 1 b3 g6 2 Bb2 Nf6 3 g3 Bg7 4 Bg2 d6 5 d4 Nbd7 6 e3 c6 7 Nd2 e5 8 Nc4 Qc7 9 a4 exd4 10 exd4 O-O 11 Ne2 d5 12 Ne3 Ne4 13 O-O Ndf6 14 c4 dxc4 15 bxc4 Nd6 16 Ba3 Re8 17 c5 Nde4 18 Nc4 Be6 19 Ne5 Bd5 20 Qc2 Ng5 21 f4 Bxg2 22 Kxg2 Ne6 23 Rf3 Rad8 24 Bb2 Nd7 25 h4 b6 26 cxb6 Qx b6 27 Rcl Nxe5 28 dxe5 c5 29 Bc3

Nd4 30 Bxd4 cxd4 31 Rb1 QD6 32 Qe4 Qa2 33 RD1 Re7 34 RF2 Qxa4 35 Rd3 Red7 36 h5 Bf8 37 hxg6 hxg6 38 f5 gxf5 39 Qxf5 Qc6+ 40 Kg1 Qb7 41 Rf4 Bh6 42 Rg4+ Kf8 43 Qh7 Be3+ 44 Rxe3 dxe3 45 Rg8+ Ke7 46 Qh4+ Ke6 47 Qf6+ Kd5 48 Rxe8 Qb1+ 49 Draw Agreed. 1/2-1/2

RD1 BD4 Harris-Suits KING'S INDIAN ATTACK 1 e4 c6 2 d3 d5 3 Nd2 g6 4 Ngf3 Bg7 5 g3 Nf6 6 Bg2 dxe4 7 dxe4 O-O 8 O-O Na6 9 Re1 Nc5 10 c3 Nxe4 11 Nxe4 Nd5 12 Qe2 f5 13 Nc5 Kh8 14 Ng5 Nxc3 15 Bxc3 Bxc3 16 Bb2 Resigns. 1-0

RD1 BD6 McCourt-Petersen SICILIAN

1 P-K4 P-QB4 2 P-KB4 P-K3 3 N-KB3 P-Q3 4 N-B3 P-QR3 5 P-QR4 B-Q2 6 B-B4 B-K2 7 O-O N-KB3 8 P-Q3 B-B3 9 Q-K2 QN-Q2 10 N-KN5 P-KR3 11 N-xKP PxN 12 B-xP Q-B2 13 N-Q5 BxN 14 PxB O-O-O 15 B-Q2 K-N1 16 QR-N1 KR-B1 17 P-B4 QR-K1 18 Q-Q1 B-Q1 19 K-R1 K-R2 20 P-QN4 P-QN3 21 Q-KB3 R-K2 22 B-K3 R-K1 23 KR-QB1 B-K2 24 P-R5 R-QN1 25 P-Q4 R-N2 26 RPxP RXP 27 QPxP QPxP 28 P-N5 P-R4 29 R-QR1 R-N2 30 B-Q2 N-N3 31 BxP K-N1 32 B-Q2 R-R2 33 P-KB5 B-Q3 34 P-N3 K-N2 35 RxR KxR 36 R-R2 K-N2 37 B-R5 R-N1 38 R-R3 Q-N1 39 BxN KxB 40 RxR QxR 41 Q-K2 Q-R8+ 42 K-N2 Q-Q5 43 Q-R2 Q-K5+ 44 K-N1 Draw Agreed. 1/2-1/2 More on page 8!

## STUBBERUD ANNOTATES

I have picked an assortment of games from recent events, paying special attention to Phil Heikkinen who has forfeited any future MCA fame.

Bob Phillips (1778) - Phil Heikkinen (2084)

Missoula Valentine Open, Round 2, 2/16/91 Sicilian Najdorf  
 1.e4 c5 2.Nf3 d6 3.d4 cd4 4.Nd4 Nf6 5.Nc3 a6 6.Bc4 e6 7.Bb3  
 b5 8.O-O Be7 9.Re1 (Mre usual is 9.f4 0-0 10.e5 with an attack  
 aimed at Black's K-side.) O-O 10.f3 Bb7 11.Be6 fe6 12.Ne6 Qc8  
 13.Nf8 Bf8 14.Be3 Nbd7 15.Qd2 Qc7 16.a4 (Red1 seems better,  
 keeping pressure on Black's weak d-pawn.) b4 17.Ne2 d5 18.ed5  
 Nd5 19.Bd4 Bd6 20.h3 Ne5 21.Qg5 h6 22.Qf5 Rf8 23.Qe6+ Kh7 24.Be5  
 Be5 25.Rad1 Rf6 26.Qg4 Qc5+ 27.Nd4? Rf4 28.Re5 Rg4 29.hg4 Qc7  
 30.Re2 Qd7 31.a5 Qc7 32.Nb3 Bc6 33.Re6 Nf4 34.Reel Bb5 (Nh3! mates  
 or wins the exchange.) 35.Rd2 Bc4 36.Re4 Bb3 37.cb3 Qc1 (0-1)

Les Brennan - Lyle Peterson Billings Winter Open Sicilian  
 Najdorf

1.e4 c5 2.Nf3 e6 3.d4 cd4 4.Nd4 d6 5.Nc3 a6 6.Bc4 Nf6 7.Bb3 (This  
 move keeps Black from playing the fork-trick with Nxe4 8.Nxe4  
 d5.) b5 8.Bg5 Be7 9.Qf3 Bb7 (GM John Nunn recommends Qc7 or Qb6.)  
 10.Be6 fe6 11.Ne6 Qa5 12.Ng7+ Kf7 13.Nf5 Nbd7 14.O-O Qb4 (b4! wins  
 White's e-pawn.) 15.Nd5 Bd5 16.ed5 Ne5 17.Nh6+ Kg7 18.Qf5 Rhe8  
 19.Rae1 Qb2 20.Re3 Nd5 21.Rg3 Kh8 22.Bf6 Nf6 23.Qe5! (0-1, though  
 Black could have hung on with ...Qxa2 24.Qg5 Nh5 25.Qxh5 Rf8 etc.)

Mach III (2265) - Phil Heikkinen (2084) Billings Winter Open,  
 Round 2, 1/19/91 King's Indian Classical

1.d4 Nf6 2.c4 g6 3.Nc3 Bg7 (The King's Indian looks like a good  
 choice of openings because it forces the computer to think  
 strategically as well as tactically.) 4.e4 d6 5.Nf3 O-  
 O 6.Be2 e5 7.O-O Nc6 8.d5 Ne7 9.Ne1 Nd7 10.f3 f5 11.Nd3 f4 12.Bd2  
 g5 13.Qb3 Ng6 14.Na4 Nf6 15.c5 g4 16.cd6 cd6 17.Rac1 Rf7 18.Nf2?  
 g3 19.hg3 fg3 20.Nd3 Ne4! 21.Be3 Nd2 (or ...Qh4 22.Rd1 Qh2+ 23.Kf1  
 Qh1+ 24.Bg1 Bh6 with the idea of 25...Be3. If 25.Ne1 Bxcl with an  
 extra Rook because of the threat of Nd2+.) 22.Qb4! (to stop  
 Qh4) Nf1 23.Rf1 Nf4 24.Nf4 ef4 25.Bd4 Qh4 26.Rc1 Qh2+ 27.Kf1 Bd4  
 (or Bh3!) 28.Qd4 Bf5 29.Nc3 Qh1+ 30.Qg1 Qg1+ (Phil knows the  
 endgame will separate the man from the machine.) 31.Kg1 Re7  
 32.Rd1 Bg6 33.Bf1 Rae8 34.Rd2 Re3 35.Ne2 Bd3 36.Ng3 (Mach wins a  
 pawn but loses the game.) fg3 37.Rd3 (Bxd3 loses also to 37...Re1+  
 38. Bf1 Ral and Reel.) Rd3 38.Bd3 Rel+ 39.Bf1 and Black soon  
 ran out of pawn moves. (0-1)

Phil Heikkinen (2069) - Paul Motta (2135), Missoula Turkey Open,  
 Round 4, 11/4/90 King's Indian Attack

1.Nf3 Nc6 2.g3 e5 3.d3 d5 4.Bg2 Be7 5.Nbd2 Be6 6.e4 d4  
 7.O-O Qd7 8.Nc4 f6 9.a4 O-O-O 10.Bd2 Bh3 11.Qe1 g5?! (h5! with the  
 idea of 12...h4, as 13.Nxh4 would lose to Rxh4 14.gxh4 Qg4) 12.b4  
 Rf8 (h5 again, and if 13.b5, then Nb8) 13.b5 Nd8 14.Bb4 h5 15.Be7  
 (White should hurry his attack with a5.) Ne7 16.Bh3 Qh3 17.a5 Ng6  
 18.Kh1 Nf4! 19.Rg1 h4 20.Qf1 hg3 21.fg3?? (Necessary is 21.Qxh3  
 Nxh3 22.Rxg3 Nf4 with a better endgame for Black.) Qf1? (With only

a minute left to make move 40, Paul misses Qxh2+! 22.Nxh2 Rxh2+ 23. Kxh2 Rh8+ 24.Qh3 Rxh3 mate.) 22.Raf1 Ng6 23.b6 ab6 24.ab6 cb6 25.Nb6+ Kc7 26.Nd5+ Kc8 27.Nd2 Nc6 28.Nc4 Nge7 29.Nf6 Rh6 (1-0 time forfeit)

Craig Skinner (1949) - Phil Heikkinen (2069)

Jackson Open, Round 2, 10/20/90 Sicilian Najdorf

1.e4 c5 2.Nf3 d6 3.d4 cd4 4.Nd4 Nf6 5.Nc3 a6 6.Bc4 e6 7.Be3 (unusual here) b5 8.Bd3 (White seems overprotective of his e-pawn. He would get good play for it if 8.Bb3 b4 9.Na4 Nxe4 10.0-0.) Bb7 9.f3 (Black's bluff has White reduced to his only chance for an attack based on g4 and g5.) Be7 10.Qd2 Nbd7 11.a4 b4 12.Na2 a5 13.Bb5 Rc8 14.c3 bc3 15.bc3 O-O 16.O-O d5 (Black is always doing well when he can work this in.) 17.Rab1? de4 18.Kh1 ef3 19.gf3 Ne5 20.Qe2 Bd5 21.Bg1 Nc4 22.h3 Na3 23.Ba6? Nb1 24.Rb1 Ba2 25.Qa2 Rc3 26.Bb5 Qd5 27.Qg2 Bb4 28.Bf2 Rfc8 29.Rg1 g6 30.Ne2 Rf3 31.Bg3 Rc2 32.Kh2 Nh5 33.Bb8 Bd6+ 34.Bd6 Qd6+ 35.Kh1 Ng3+ 36.Ng3 Rg2 (0-1)

Phil Heikkinen (2069) - Ed Schreiber (1947)

Jackson Open, Round 5, 10/21/90 Reverse Sicilian Dragon

1.c4 e5 2.g3 Nf6 3.Bg2 d5 4.cd5 Nd5 5.Nc3 Nb6 6.Nf3 Nc6 7.O-O Be7 8.d3 O-O 9.Bd2 Be6 10.a4 a6 11.Rc1 f5 12.a5! (White's best try for an initiative) Nd7 13.Na4 Rb8 14.Qc2 Bd5 15.e4 fe4 (...Be6 is better) 16.de4 Be6 17.Be3 Na5 18.Qc7 Qc7 19.Rc7 Nc6 20.Rd1 Nf6 (threatening Bd8) 21.Nc5 Bc8 22.Ne5 Bd8 23.Rc6 bc6 24.Nc6 Bg4 25.f3 Rc8 26.Nd8 Rfd8 27.Rd8 Rd8 28.fg4 (With proper play, White should win this endgame.) Ng4 29.Bf4 Rd1+ 30.Bf1 a5 31.Kg2 h6? 32.Be2 (1-0)

Zygmund Mayer - Kip Limesand

Billings Winter Open, 1/20/91

1.e4 c5 2.d4 Nc6 3.dc5 (d5!) e6 4.Be3 Nf6 5.Nc3 Qa5 6.Qd2 Bc5 7.Bc5 Qc5 8.Nf3 O-O 9.Bd3 b6 10.O-O Bb7 11.Qf4 e5 12.Qh4 Nb4 13.Rac1 Rac8 14.Be2 d5! 15.a3 Nc2 16.ed5 Na3?! (Nd4 is ok, but amazingly Black comes out with play against White's King.) 17.ba3 Qa3 18.Nb5 Qc1 19.Rc1 Rc1 20.Bf1 a5 21.Ne5 Ba6 22.Nd3 Rf1 23.Kf1 Bb5 24.Qd4 Rd8 25.d6 Ne8 26.Ke1 Rd6 27.Qb2 Bd3 (The rest is technique.) 28.Qa3 h6 29.Qa4 Kf8 30.f3 Bf5 31.g4 Bd7 32.Qc2 b5 33.h4 a4 34.g5 hg5 35.hg5 b4 36.f4 b3 37.Qb1 Bg4 38.Qb2 Re6 39.Kf1 Re2 40.Qa3 Kg8 41.Qa4 b2 42.Qb4 g6 43.f5 gf5 44.g6 fg6 45.Qc4 Kh7 46.Qb5 Ng7 47.Qb7 Rh2 48.Kg1 Rd2 (0-1)

Winter Open Jan 19, 20, 1991 Cross table

NO.	PLAYER'S FULL NAME AS SHOWN ON MEMBERSHIP CARD LAST, FIRST, INITIAL	I.D. NO.	RATING	RD. 1	RD. 2	RD. 3	RD. 4	RD. 5	RD. 6	RD. 7	RD. 8	TOTAL
1	Heikkinen		2084	W4	W2	D5	W3					3.5
2	Mach III		2265	W3	L1	W4	—					2.0
3	Brennan		1771	L2	W5	W6	L1					2.0
4	Limesand		1702	L1	W6	L2	W5					2.0
5	Mayer		2034	W6	L3	D1	L4					1.5
6	Peterson		1438	L5	L4	L3	—					0

CROCUS OPEN continued: RI4 BD1 Motta-Nowak BLACKMAR-DIEMER 1 d4 Nf6 2 Nc3 d5 3 e4 dxe5 4 f3 c6 5 Bc4 e3 6 Bxe3 Nd5 7 Bd2?! (Qd2!) Be6 8 Nxd5 cxd5 9 Bd3 Nc6 10 c3 Qd7 11 Qb1 g6 12 Ne2 Bf5 13 Bxf5 Qxf5 14 Qxf5 gxf5 15 Ng3 e6 16 O-O Bd6 17 Nh5 O-O-O 18 B g5 Be7 19 Bf4 Rhg8 20 Rael Kd7 21 Bc1 b5 22 Re2 b4 23 Bd2 Rb8 24 Rfel Rb6 25 Nf4 Ra6 26 Ral Rb8 27 Nd3 bxc3 28 Bxc3 Ra4 29 b3 Ra6 30 f4 Rb5 31 Rc2 Rab6 32 Bb2 Ra5 33 Draw Agreed. 1/2-1/2

RD5 BD3 McBroom-Jensen RETI 1 Nf3 d5 2 g3 Nf6 3 Bg2 g6 4 c4 c6 5 cx d5 cxd5 6 b3 Bg7 7 Bb2 O-O 8 O-O NC6 9 Nc3 e5 10 d3 d4 11 Nb5 a6 12 Na3 Nd5 13 Nc4 b5 14 Ncd2 f5 15 e4 dxe4 e.p. 16 fxe3 Nxe3 17 Qe2 Nxf1 18 Rxf1 Bb7 19 Kh1 Re8 20 Qf2 Qx d3 21 Nxe5 Bxe5 22 Bxe5 Rxe5 23 Qb6 Qd7 24 Nf3 Re2 25 Nd4 Rxc2 26 Ne6 Ne5 27 Nc5 Rf2+ 28 Nxb7 Qc6+ 29 White Resigns. 0-1

RD5 BD2 Nowak-Mostad VIENNA 1 P-K4 P-K4 2 N-QB3 N-QB3 3 P-KN3 N-KB3 4 B-N2 B-N5 5 KN-K2 P-Q3 6 P-KR3 Q-K2 7 O-O B-K3 8 N-Q5 Q-Q2 9 K-R2 BxN 10 PxB N-K2 11 P-QB4 P-B3 12 PXP PXP 13 P-Q4 P-K5 14 Q-R4 P-B4 15 QxQ KxQ 16 R-Q1 QR-QB1 17 P-QR3 B-R4 18 PXP RXP 19 P-QN4! RXP 20 PxB P-Q4 21 QR-N1 KR-QB1 22 R-N7ch R/B1-B2 23 P-R6 K-B1 24 R-N5 R-B7 25 B-B1 N-B3 26 B-B4 R-Q2 27 R/Q1-N1 R-K2 28 R-N7 N-Q2 29 P-KR4 P-Q5 30 B-R3 K-Q1 31 NXP Nxn 32 R-N1ch R-B1 33 RxB KxR 34 R-N8 Mate. 1-0

RD5 BD1 Limesand-Motta BIRD-LARSEN 1 f4 d5 2 b3 e5 3 Fxe5 Nc6 4 Bb2 f6 5 exf6 Nxf6 6 Nf3 Bd6 7 e3 O-O 8 Nc3 Be6 9 Nb5 Be7! 10 Bd3 a6 11 Nd4 Nxd4 12 Bxd4 c5 13 Bb2 Bg4 14 h3 Bxf3 15 gxf3 Nh5 16 Qe2 Ng3 17 Qg2 Bf6 18 Bxf6 Qxf6 19 Kf2 Nxb1+ 20 Rxh1 b5 21 f4 Rad8 22 Rg1 Rd7 23 a4 c4 24 Qg4 Re7 25 bxc4 bxc4 26 Bxh7+ Kxh7 27 Q h5+ Kg8 28 Qxd5+ Qe6 29 Qg5 c3 30 White's flag fell. 0-1 Games selected by S.Moore.

\*\*\*\*\*

UCCC 2ND SPRING

3/28-4/11,1991

P1 Name	Rate	RD1	RD2	RD3	TOT
1 Mike Jensen	1994 W8	W6	W2		3.0
2 Don Tillotson	UNR W7	W8	L1		2.0
3 Lyle Petersen	1403 L6	W13	W5		2.0
4 John Butler	UNR W10	W5	WD		2.0
5 Dan McCourt	1758 W9	L4	L3		1.0
6 Bill McBroom	1695 W3	L1	WD		1.0
7 Sherwood Moore	1590 L2	W12	WD		1.0
8 Todd Sherwood	1439 L1	L2	W12		1.0
9 Richie Harris	1428 L5	W10	L11		1.0
10 George Gupton	UNR L4	L9	X13		1.0
11 Thad Suits	1927 --	--	W9		1.0
12 Don Gisselbeck	1328 --	L7	L8		0
13 Jeff Gaudreau	UNR --	L3	F10		0

RD2 BD3 Tillotson-Sherwood FOUR KNIGHTS 1 e4 e5 2 Nf3 Nf6 3 Nc3 Nc6 4 Bb5 a6 5 Bx c6 dxc6 6 Nxe5 Qe7 7 f4 Nxe4 8 Nxe4 f6 9 Q h5+ Kd8 10 Nf7+ Kd7 11 Nxb8 Qxe4+ 12 Kd1 Q xg2 13 Qf7+ Be7 14 d3 Qxh1+ 15 Kd2 Qg2+ 16 Kc3 b6 17 f5 Qd5 18 Qxg7 Qxf5 19 Be3 Qe5+ 20 Kd2 Qxh2+ 21 Kc3 Qe5+ 22 Bd4 Qe6 23 Qx h7 Bb7 24 Ng6 Re8 25 Kd2 c5 26 Re1 Qd6 27 Bc3 b5 28 Nh8 b4 29 Qh3+ Kc6 30 Re6 bxc3+ 31 Kxc3 Rxh8 32 Rxd6+ Bxd6 33 Qxh8 Be5+ 34 Kb3 Kb6 35 Ka3 Bd5 36 Qd8 Kc6 37 Qa8+ Kd6 38 Qxa6+ c6 39 c4 Be6 40 b4 cxb4+ 41 Kxb4 f5 42 Qa5 Bd4 43 a4 f4 44 Qd8+ Bd7 45 Qf8+ Kc7 46 Qxf4+ Kb7 47 Qxd4 Ka6 48 Qxa7 c5+ 49 Kxc5 Black Resigns. Not even a stalemate to be found here! 1-0

\*\*\*\*\*

UCCC 1ST SPRING

2/28-3/15,1991

P1 Name	Rate	RD1	RD2	RD3	TOT
1 Vijay Srao	UNR W9	W7	W4		3.0
2 Richie Harris	1428 D3	W9	W7		2.5
3 Dave Shughart	1841 D2	W8	D6		2.0
4 Richard Gray	1488 W5	W6	L1		2.0
5 Don Tillotson	UNR L4	W10	W9		2.0
6 Bill McBroom	1695 W8	L4	D3		1.5
7 Todd Sherwood	1439 W10	L1	L2		1.0
8 George Gupton	1193 L6	L3	W10		1.0
9 Lyle Petersen	1403 L1	L2	L5		0
10 Jeff Gaudreau	UNR L7	L5	L8		0

RD2 BD1 Srao-Sherwood FOUR KNIGHTS 1 e4 e5 2 Nf3 Nf6 3 Nc3 Nc6 4 Bc4 Nxe4 5 Qe2 Nx c3 6 bxc3 d6 7 d4 Qe7 8 Ng5 f6 9 Nf7 Rg8 10 Nxd6+ Qxd6 11 Bxg8 Bf5 12 O-O O-O-O 13 dxe5 Nxe5 14 Bf4 Qc5 15 Bxe5 fxe5 16 Qe3 B xc2 17 Be6+ Kb8 18 Qxc5 Bxc5 19 Bb3 Bd3 20 Rd1 e4 21 Bc4 c6 22 Bxd3 exd3 23 RD2 Rf8 24 Rad1 a6 25 Kf1 Ka7 26 f3 Rd8 27 Rxd3 Rx d3 28 Rxd3 Be7 29 RD7 Bf6 30 c4 Kb6 31 Ke2 c5 32 Kd3 Kc6 33 Rf7 Kb6 34 f4 a5 35 a4 K c6 36 g4 h6 37 g5 hxg5 38 fxg5 Be5 39 Ke4 Bd4 40 g4 b6 41 h5 Kd6 42 g6 Ke6 43 Rb7 Black Resigns. 1-0

RD3 BD2 Sherwood-Harris CARO KANN 1 P-K4 P-QB3 2 N-KB3 P-Q4 3 P-Q3 PXP 4 PXP QxQch KxQ B-N5 6 QN-K2 N-Q2 7 B-Q3 R-Q1 8 P-KR3 BxN 9 NxB N-B4 10 K-K2 N-B3 11 N-Q2 P-K3 12 R-K1 B-Q3 13 K-B1 B-B5 14 K-K2 BxN 15 BxB N/B3XP 16 B-N4 NxB 17 PxB N=B3 18 R/R1-B3 N-Q4 19 B-R3 N-B5ch 20 White Resigns. 0-1 UCCC material submitted by B.McBroom.



Bill Lynch

"A Tale of Two Knights"

This was the longest of my games in the 1989-90 Montana Postal Championship. It may not have particular theoretical significance, but the Knight play is interesting:

Bill McBroom-Bill Lynch

RETI

1 Nf3 g6

I took the opportunity of the postal to try a new defensive system, and scored 3 of 3 with this - but I haven't had that good a success over the board.

2 g3 Bg7  
3 Bg2 e5  
4 O-O f5  
5 c4 d6  
6 Nc3 Nf6  
7 Qc2

And, we were now out of the books on my shelf so it's every man for himself.

8 b3 Nh5

One Knight meanders off to the edge of the board.

9 e3 f4  
10 exf4 exf4  
11 Bb2 Nc6

And the second Knight begins a mystical tour to the center - and a commanding position!?

12 Ne4 Nb4  
13 Qb1 Bxb2  
14 Qxb2 Bf5  
15 Nd4

I had analyzed Neg5, Nfg5 and Nc3, but I completely overlooked this!?

16 Qc3 Nd3  
Ne5

The Knight has reached it's goal - but.

17 Nxf5 gxf5  
18 d4 fxe4  
19 dxe5 f3

So, the Knight is gone and so is Black's kingside. The question becomes whose King is more vulnerable - Black's in the open or White's trapped in the corner?

20 Bh3 Re8  
21 exd6 Qxd6  
22 Rad1 Qg6  
23 Kh1 Nf6

The second Knight returns to the action. This piece becomes crucial for it's ability to protect weak points and secure forward outposts.

24 c5 Rad8  
25 Rxd8 Rxd8  
26 Qe5 Qg7  
27 Bf5 Re8  
28 Qc3 Qg5  
29 Bh3 Nd5

The Knight advances to reinforce the central squares. - It seems to me that White should strive to keep out Black's Queen and/or to get in h4 to make room for the King. Instead, however:

30 Qc4 c6  
31 Bd7 Re7  
32 Bc8 Qd2  
33 a3 e3  
34 Qg4+ Kf8  
35 Bxb7

White does not have time for this bit of adventuring. I still think h4 might be helpful.

36 Qc8+ Kf7  
37 Qf5+ Nf6!

The Knight to the rescue! All of the checking squares are covered.

38 Rg1 e1=Q  
39 Ba6 Qexf2  
40 Bc4+ Kg7  
41 Qg5+? Qdxg5  
42 Resigns.

At the very end White lost track of the position, but there were no good moves left. Despite the nakedness of the Black King position it was amazing to me that the Knight so effectively screened off White's Queen and Bishop.

McBroom is the "leader in the clubhouse" in the 1990-91 postal with 3.5 of 5. In good position is Zygmund Mayer with 3 of 3, and Paul Motta has 2 of 2 to date. Les Brennan is at 2.5/5, Sherwood Moore has 1/3, Duane Hildenstab 0.5/3, Kip Limesand 0.5/3 and Don Price is 0/2. It appears that Mayer-Motta and their games with Bill McBroom will be crucial in determining the next Montana Postal Champion. Results reported by director Les Brennan.

MAY 18-19, 1991: WYOMING OPEN ### Casper Mall, Next door to Target, Casper, WY 82601. 5 Round Swiss: 9:15am, 2:00pm, 7:00pm; 9:00am, 3:00pm. Rounds 1-3: 40 moves / 90 minutes, 30 moves / hour. Rounds 4-5: 40 moves / 2 hours, 20 moves / hour. Entry fee = OPEN: \$25 advance, \$30 at site 8:00-9:00am, May 18. RESERVE (under 1650): \$20 advance, \$25 at site. Prizes = OPEN: 1st - \$200, 2nd - \$100. RESERVE: 1st - \$100, U1400 - \$30. (Prizes based on 20 entries.) Wyoming Chess Association or Other State membership required. USCF membership required. Sponsor - Wyoming Chess Association / Bruce Johnson, 839 Elma, Casper, WY 82601.

US Chess Federation & Montana Chess Association or Other State Membership required in all Montana tournaments. Masters, Experts and Juniors enter for half of listed values.

MAY 25-27, 1991: 56TH MONTANA OPEN ### Montana State Univ., Student Union Bldg., Room 275, Bozeman, MT 59717. 5 Round Swiss: 11:00am, 6:00pm; 10:00am, 5:30pm; 9:30am. 40 moves / 2 hours, 20 moves / hour. Entry fee = \$15 advance, \$20 at site 9:30-10:30am May 25. Prizes - Equipment & Books 1st, 2nd, 3rd, U1800, U1600, U1400. Sponsor - Montana Chess Association / Paul Motta, 406-682-7333. Ent: Bill Lynch, 4245 Palisades Park Dr., Billings, MT 59106. 406-652-2063 after 5. ### Montana Chess Association Annual Business Meeting 5:00pm, May 25. Montana State Blitz Championship 4:00pm, May 26. ### Top three Montana finishers qualify for the State Closed Championship Playoff.

JUNE 29-30, 1991: BILLINGS DOUBLE ### Conference Room, Plaza Office Bldg., 1629 Ave. D, Billings, MT 59102. SATURDAY: Four Man Quads - 3 Round Robin: 10:30am, 3:00pm, 7:30pm. 40 moves / 90 minutes, Game / 30 minutes. Entry fee = \$15 advance, \$17 at site 9:45-10:15am June 29. Prizes: 1st - \$40, 2nd - \$15 per Quad. SUNDAY: Two Sections - 5 Round Robin or Swiss: 9:00am, 10:15am, 11:30am, 1:30pm, 2:45pm. Game / 30 minutes. Entry fee = \$5 advance, \$7 at site 8:45-9:00am June 30. Prizes: 1st - 40%, 2nd 20%. Sponsor - Montana Chess Association / Bill Lynch, 4245 Palisades Park Dr., Billings, MT 59106. 406-652-2063 after 5.

\*\*\*\*\*10\*\*\*\*\*

12475278 1907 9111  
 Thad Suits  
 3601 1st Ave. N.  
 Great Falls MT 59401

PRESORTED  
 FIRST CLASS

#####  
 # MONTANA CHESS NEWS  
 # published by the  
 # MONTANA CHESS ASSOCIATION  
 # an affiliate of the  
 # U.S. CHESS FEDERATION  
 # Promoting Chess Excellence  
 # by Education & Competition  
 # Membership = \$6/yr Regular  
 # \$3/yr Junior \$50/yr Patron  
 # William M. Lynch  
 # Editor, Secretary/Treasurer  
 # 4245 Palisades Park Dr.  
 # Billings, Montana 59106  
 #####