

MONTANA

CHESS NEWS

Volume 27, Issue 1 — March 2002

NEWS FROM THE BOARD OF DIRECTORS

GREG NOWAK WINS JANUARY THAW

JAN JOHANSSON TAKES THE GROUNDHOG

2002 STATE OPEN - MISSOULA - JUNE 1-2

News from the Board of Directors

On January 20, 2002, the Montana Chess Association Board Members held a meeting. Present at the meeting was President Jan Johansson, Vice President Sherwood Moore, Western Vice President Dan McCourt and Eastern Vice President Mel Drake. The Secretary /Treasurer, Paul Motta, was not present.

The Board discussed and voted on the following issues. In each case, the vote was 3 in favor and 0 opposed. (Note: The President votes only in case of a tie, which did not occur at this meeting).

1. State Open - Missoula UCCC will host the 2002 Montana State Open on June 1 and 2, 2002. Dan McCourt will direct the tournament. For details see the tournament announcements on page 11.

2. Junior Championship - the Junior Championship will be held on April 27, 2002 in Helena, Montana. Melvin Drake will direct the tournament. For details see the tournament announcements, p.11.

3. Separating the Open and Junior Championship - the MCA bylaws state the Junior Championship would be held at the same time as the State Open. The Board voted to separate these two tournaments for various logistical reasons, mainly being the difficulty in running two tournaments at the same time.

4. State Closed Format - pursuant to the vote at the business meeting at the last State Open, the State Closed will be a six person round robin. At this Board meeting, the Board voted the 6 seats at the Closed will be filled by the top 3 finishers at the State

Open, top 2 finishers in the Grand Prix standings, and current State Champion (Jan Johansson). If a qualifier cannot come to the Closed, then the next qualifier from that particular category will take the person's place.

5. Proxy votes at business meeting - The issue of proxy votes has been an ongoing source of controversy. The Board voted there will be an official "Proxy Form" published in the May 10, 2002 Montana Chess News. The Proxy Form will contain the issues and candidates which will be considered at the business meeting set for June 2, 2002. These same issues will be published in the same newsletter.

This is a change from past practice in which a member would show up at the business meeting with authorization to vote for other members. This new way, each member has the right to vote, however, the vote must be on the "Proxy Form" and mailed prior to the business meeting.

6. Nomination for Officers - There are 5 positions on the Board - President, Vice President, Western V.P., Eastern V.P., and Secretary/ Treasurer. The May 10, 2002 Montana Chess News will publish those who are running for these offices. If you would like to run for office, please notify the Editor at the address inside. If you would like to nominate someone else for an office, please make sure they are willing to serve. The Newsletter will publish a short resume and platform of office seekers. Depending on response, the Board reserves the right to accept nominations for the Board at the business meeting.

Calling for Ideas and Candidates

This year's business meeting will be June 2, 2002 at the MT. State Open. According to the MCA bylaws, the issues for the business meeting must first be published in the Montana Chess News prior to the business meeting. I anticipate publishing the special business meeting newsletter on May 10, 2002, so get your ideas to me before May 1, 2002 if possible.

The May 10, 2002 MCN will also have the proxy ballots, which will contain the issues up for vote at the business meeting. The proxy ballot will also have the list of candidates for the particular offices. Send your ideas and nominations to the Editor, P.O. Box 3052, Billings, MT. 59103.

MCA Board Members (2001-2002)

Jan Johansson - President (333-4901)

rayanjan@mcn.net

Sherwood Moore - Vice President (728-1695)

smoore1721@aol.com

Paul Motta - Secretary/Treasurer

webmaster@montanachess.com

Mel Drake - Eastern V.P. (475-3481)

Daniel McCourt - Western V.P. (721-0254)

dmcc@micro-mania.net

Let them know about your ideas, complaints, suggestions, and praise.

Montana Chess News is published by the Montana Chess Association, an affiliate of the U. S. Chess Federation. Subscription and membership in the MCA is \$10/yr regular, \$5/yr junior (Under 18), \$15 Family. Discounted 3 year rate: \$25 regular, \$12 junior, \$35 Family. First time players who are also new to the U.S.C.F. shall have their first year's MCA membership fee waived

Editor - David Duke

P.O. Box 3052

Billings, MT 59102

(406) 254.8474, (406) 254.2121

E-mail: dalduke@juno.com

All submissions are welcome, including photos. Articles by E-mail or on a PC-formatted diskette are especially appreciated.

Publishing Schedule:

Issue 1 - Mar. 1, Issue 2 (Special for the Open) - May 10, Issue 3 - July 31, Issue 4 - Sept. 25, Issue 5 - Dec. 8. Deadline for most submissions is ten days before the publication date.

An Open Letter to Montana Chess Players

From Bill McBroom

Fellow Lovers of the Royal Game

The invitation, "Promote Chess, Be a Tournament Director," was extended in the most recent issue of Montana Chess News. This is a good idea. Lots of good ideas have been suggested over the years and a number have been attempted. Many fall short, sometimes far short, of their champions' aspirations. Exhibitions by locals in shopping malls net only the occasional new player. Meaningful corporate sponsorship has never been obtained. Larger-than-normal prize funds do not lead to a marked increase in participants. Importing GMs for simulms has resulted in their sponsors to support the enterprise out of personal funds. Even obvious long-term strategy of supporting scholastic chess has produced only slim results.

I submit that chess, never very popular with the general American public, is greeted with even less interest now. It takes time

to study and time to play tournament chess. First chess computers, and more recently internet chess, have drained away people who would have participated over the board at an earlier time. We are all busy and technology has made it easier to enjoy chess in ways that do not require a substantial time commitment, travel, or expense.

The small Montana population is spread over an enormous area and that makes it difficult to develop and sustain a critical mass of regular players. While the emergence of one-day tournaments makes it possible to play in a tournament without having the cost of a motel, it still takes time and money to travel. Spokane has 80 or more participants in scholastic chess and Spokane represents a far larger catchment area than any city in Montana. The Marshall and Manhattan chess clubs are within walking distance of each other (granted, it is a long walk). Both have chess on virtually a 24/7 basis. But then, Manhattan is the center of the largest catchment area in the U.S. - as the existence of the Polgar chess Club in Queens suggests.

It is clear that not all MCA members play regularly in tournaments - even in those events in their own communities. The potential to reduce participation further is imminent in the disparate interests of those relatively few who do play regularly. Some want the largest possible prize fund, others want to maximize opportunities to become the State Champion, and still others - most, I suspect - merely enjoy over-the-board chess. Sadly, events of the last year suggest that Montana chess has become politicized. This has resulted in nothing good for chess, in my opinion.

Grand Prix Race Leaders

Jim Skovron	30.57
J. Johansson	24.36
Ron Erickson	24.09
Greg Nowak	21.87
Bill McBroom	20.10
S. Moore	15.12
Dan McCourt	14.11
R. Carpenter	9.13

Visit these Web Sites:

www.montanachess.com
<http://montanachessassociation.20fr.com>

With deference to the author of the invitation mentioned at the outset of this letter, enhancing chess in Montana is not merely a matter of becoming a tournament director. If there are half a dozen interested people in one city, someone inevitably becomes a director. It is not difficult to meet U.S.C.F. requirements for a "Club Director." Organized chess exists in Montana primarily because a few, a very few, dedicated souls volunteer the time and effort to make it possible. By way of example, and in alphabetical order, I suggest that editors of the Montana Chess News are just such types. Thanks to Les Brennan, David Duke, Bill Lynch, Sherwood Moore, and Thad Suits! These five players are outstanding chess citizens and have nurtured and sustained chess for more than a quarter of a century.

What is to be done? I suggest two things. First, apart from the State Open, we should play in one out-of-town tournament each year. Better yet, bring someone along who has not played away from home in a while. Better still, bring someone who has never played in any tournament before.

Second, there are lots of things we might do. However, do not insist that everyone else honor your idea. To draw of a famous line of J.F.K., ask not what others should do to make your idea work, ask what you can do to help chess. We have a history of too many failed initiatives to imagine that a sincerely argued position is self-certifying. Try something; if something succeeds, we will all benefit.

I lied; there are three things we need to do. Be a fierce, but sportsman-like, competitor over the board. But the instant the game is over, be a friend and extend nothing by civility and cordiality to others. Remember, we depend on each other if we are to enjoy chess in Montana.

Greetings fellow primates and chess players!

From Dan McCourt, Western Vice President

February has been a busy chess month. About 20 of us turned out for the Groundhog where only Johansson got away without seeing his own shadow. Here in the Garden City, there was rated chess on the week nights at both the Clandestine Club and the Univ-Community Club. The Clandestine Club also hosted a 3-round, G/60 tournament on February 9, 2002. It was nice to come away with 3 wins but I was taken aback by my first ever experience with an opponent who would not speak or shake hands before or after our game. On the other hand, it was nice to visit with **Scott Stanley** and **Don Robinson** who were down from Kalispell. They are movin' and shakin' up that way and pretty much have chess established on a club basis. I am looking forward to their 1st Saturday event.

Spokane's annual Dave Collyer Memorial was held February 22-23-24, 2002. The Octopus and I journeyed over on Friday. I came away with a 3 point effort and another chess 1st for me – losing to the same person on consecutive days. Lost a St. Peterburg Dutch to John Donaldson in the Friday night simul, and followed that with a Saturday night loss to the same IM who was not too much troubled by my Grand Prix attack. Fortunately, losing to a rating of 2495 doesn't pack much sting.

The Octopus lost to Donaldson too. There was more riding on that one, though. An oversight in a good position cost Greg

a pawn and a shot at the prize fund – last year he shared 1st place. It was the Big Squid's 2nd loss of the day and both came against eventual 1st place winners. Musing over it all later on, Greg found himself unable to remember when he last lost 2 games in one day. It's a rarity for him. For me, if I play 2 games in one day, it's like a 50-50 proposition they could both be losses. **Romie Carpenter** and **Bill McBroom** were there too., Their fortunes weren't any better than ours – maybe worse. We Missoula players could save a lot of time by just cutting off our own scalps and mailing them over. Even Donaldson had a close moment. In the 2nd round, Elston Cloy, one of those Spokane whiz kids, uncorked a rook sac that lifted his game out of Queen side death-grip and into a mutually agreed draw with checkmates hanging all around. Like a tremor, it was over as fast as it hit and it caused a stir – "what the heck happened over there? It's over??" Kinda like last year when young Collyer drew Donaldson and beat Carl Hassler.

I thought it might be good to mention this 'cause if you come to this year's Crocus Open, there is a real good chance the competition will include some of those whiz-bangers like Cloy, Collyer, Julian, young Weylan and well, you get the picture. I am scheduling myself as a non-

playing director.

The Crocus should get a good turnout. There's Grand Prix points for Montanans and rating points for the out-of-staters, and some cashola, too. The G/90 time control has drawn a few groans, but around Montana, it generally gets good marks. Helena and Billings use the same format so it might be around for awhile.

A few words on the upcoming State Open.

Nobody seems to remember that last time it was in Missoula. And there is a reason for that—we are just so darn far out of the way . . . A fact that we recognize and want the rest of the MCA folks to know we really appreciate this opportunity and the effort that it requires to go the extra distance.

We would be giving out a trophy for longest commute but decided against it since we know for sure **Les Brennan** is coming. Don't want that guy getting anything easy. (He's already gotten more out of that goofy old Vienna thing than anybody should reasonably expect.) Les is gonna be here to start trouble. I know this from several emails. He claims that Editor David is liberally dumping all sorts of subliminal [%^3#\$**! - Ed.] subversion into the pages of the newsletter and he (Les) is "fighting mad." So when we crank up that great windmill we call our Business Meeting, you can bet ol' mad Les will be in there taking a tilt at it. Bring your picnic basket 'cause it'll be a wondrous spectacle. (Chesswise, you might want to book up on your French – Mad

Les does play a mean Vienna. Besides the entertainment of the business meeting, the Open has a good chance of coming off very successfully. The playing site will be a convenient, next-to-downtown location, in the local landmark building owned by the Missoula Children's Theatre. It's a stone's throw from good food and good lodging and only a short walk to the faster and the fancier. The playing room should have enough natural light as one side is all window, the opposite side is mirrored and the floor is high-gloss hardwood.

The rent was a bit intimidating at first but we have approached local merchants and have had very good fortune securing pledges to cover the bill. In return, we will ask participants to remember those businesses when seeking food and lodging. Those names will be on the flyers that will be included with the next newsletter.

The goal of the MCA Board and the U.C.C.C. is to put on the kind of tournament that will draw 50 players. A tall order, but not impossible. Publicity via the Internet, Chess Life, and the MCA newsletter and personal contact will be crucial, and is already under way. We have been working on the planning for several weeks now, and so far things are coming together very well. It's still early in the year, but we are hoping you can at least pencil in the Montana Open for June 1 & 2. More details will be forthcoming as ideas and plans continue to gel.

In the meantime, Billings is next, and I'll be there.

Message from Eastern V.P. - Mel Drake

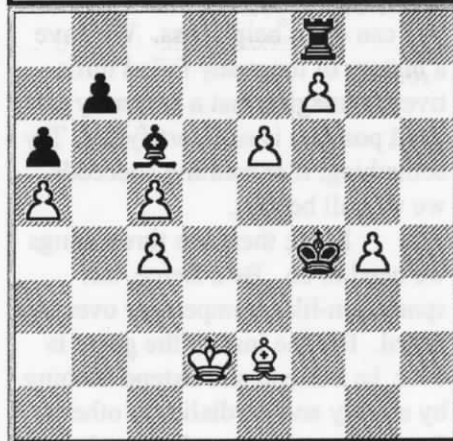
Dear MCA Members,

I have served on the MCA Board of Directors this past year and I hope to run again this year. I am pretty well known by the majority of the membership. I am willing to listen to anyone and communicate with them on any and all issues. My phone line is always open and I check my mail box daily. Communication between the Board and the membership is very important. I try to make it to most of the MCA sponsored tournaments. I try to host one or two tournaments a year. I try to get people interested in the MCA to keep our membership up and to increase it. I try to get more young people involved in the MCA. These young players are the future of the MCA and the country.

If you as an MCA member, feel that you are interested in an office on the Board and that you can help the MCA, I am suggesting that you write a little note to put in the next newsletter introducing yourself. Let the membership know that you served on these committees, you volunteered for. Let them know that you participated in many tournaments or helped bring tournys to your city. Let chess players know who you are and what you stand for.

Let's all try to make it to Missoula, June 1st and 2nd for the Montana State Open and Business meeting on June 2nd.

Sincerely, Melvin Drake



"Best move from the 2002 U.S. Championship," White played Bf3! which results in a new Q.

January Thaw

by Dan McCourt - W.V.P.

The 2002 January Thaw came off quite well with 18 participants in the rated section and 16 youth players in the unrated group.

Devin Drake weathered some close encounters and scored a perfect 5-0 for the best overall record in the youth group. Participants ranged from 2nd graders to 8th graders. Organizer Chuck Tilly passed out medallions to the best three scores in the 1-3, 4-5, and 6-8 grade sections. Players, parents, and organizers were all quite pleased with the "fun factor" and the overall success of the event.

Greg Nowak dominated play in the rated section with a 4.5 score that included his usual "draw offer you can't refuse" in the 5th round. Jan Johanson placed second, losing only to the 'Octopus' in a hard-fought round on Sunday morning. Jim Skovron rallied from a 1st round upset loss to edge Ron Erickson on tie breaks for 3rd place. Jim's last round draw with Nowak was the second time in as many tournaments prompting Greg to lament his inability to "catch that wily Jim Skovron." Ron scored a Sunday morning upset of David Duke and then took a bye to watch his Steelers move along in the NFL playoffs.

Overheard after the 2nd round:

"Dave (Duke), how are you doing, so far?"

"Well, Jim (Skovron), I got hit by the same bus that ran over you this morning."

The 'bus' was the McB-room express which was finally stopped in round 3 by State Champ, Jan Johansson. Bill took home the \$25 biggest-upsent prize for his win over Duke.

Thirteen year-old Devon

le won two games in his first USCF outing and shared \$25 with NiNick Cohea for best U/19 score. Devon's gritty play also earned him a first-time rating of 1412! The four U/19 players entered gave good accounts of themselves in tough competition. We will be seeing more of these young fellas!

In spite of physical infirmities, organizer Mel Drake had everything up and ready to go including 2 playing rooms, tables, coffee, doughnuts, and treats for the kids from MacDonalds.

Thanks to Mel and Chuck Tilly, the players who traveled from near and far, the Lewis & Clark Public Library, and MacDonalds, for organization, participation, space and treats. And an extra tip of hat to Sherwood Moore and UCCC of Missoula for laptop expertise and tournament supplies. A fun time was had by all!

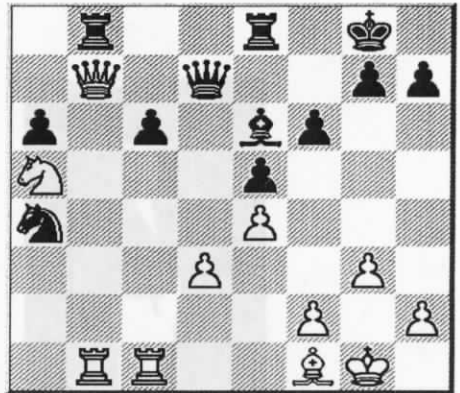
Games from the Thaw

This game from the Thaw pitted the current State Champion, **Jan Johansson** against the state's highest rated player, **Greg Nowak**. After jockeying around for position, Greg finds a nice finishing combination.

G. Nowak (2165) - J.Johansson (2041)
[A29] January Thaw, 1.20.2002

1.g3 e5 2.c4 Nf6 3.Bg2 d5 4.cxd5
Nxd5 5.Nc3 Nb6 6.Nf3 Nc6 7.0-0
Be7 8.b3 0-0 9.Bb2 Bf5 10.d3 Qd7
11.Qc1 Rad8 12.Ba3 Rfe8 13.Bxe7
Qxe7 14.Re1 a6 15.Nd2 Bc8
16.Nc4 Na8 17.Nb2 Nb6 18.Nc4
Na8 19.Qa3 Nb4 20.Qb2 c6 21.a3
Nd5 22.b4 f6 23.Rab1 Nxc3
24.Qxc3 Nc7 25.a4 Be6 26.Na5
Nd5 27.Qc5 Qf7 28.Qc2 Rc8
29.Nc4 Qe7 30.Qb2 Nc7 31.Na5
Nd5 32.Nc4 Nc7 33.e4 Rcd8
34.Na5 Na8 35.Bf1 Qd7 36.Re1
Nb6 37.b5 Nxa4 38.bxc6 bxc6

39.Qb7 Rb8

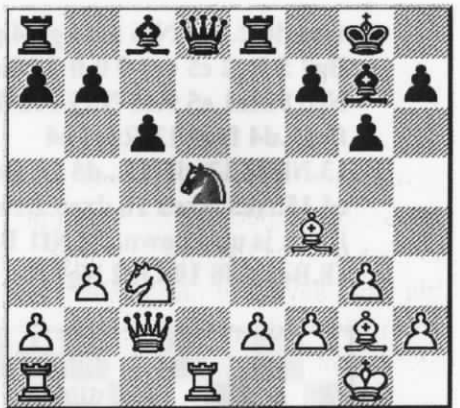


40.Qxb8! Rxb8 41.Rxb8+ Kf7
42.Rb7 Ke7 43.Rxd7+ Bxd7
44.Nxc6+ Kd6 45.Nb4 Nc5 1-0

Greg Nowak and Michael Long played in this next game from the Thaw. A sharp and short contest.

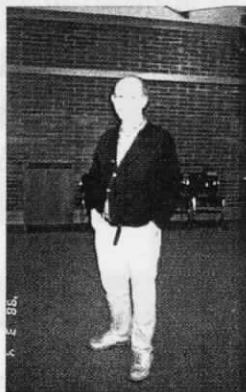
G. Nowak (2170) - M.Long (1775)
[A07] January Thaw, 1.19.2002

1.g3 d5 2.Nf3 Nf6 3.Bg2 g6 4.0-0
Bg7 5.c4 c6 6.Qc2 e6 7.d4 0-0
8.Nc3 Re8 9.Rd1 Nbd7 10.b3 e5
11.dxe5 Nxe5 12.Nxe5 Rxe5 13.Bf4
Re8 14.cxd5 Nxd5



15.Nxd5! Greg's experience gives him the confidence to offer the exchange sacrifice. 15... Bxa1?
16.Nc7 Qf6 17.Nxe8 Qb2 18.Qxb2
Bxb2 19.Rd8 Black resigned. 1-0

State Open
June 1 - 2, 2002

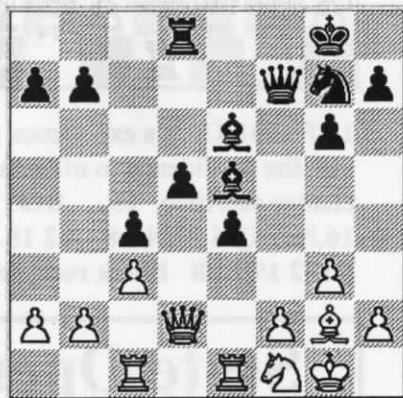


Greg Nowak, a/k/a The Octopus is the highest rated player in Montana, and the Thaw winner.

Bill McBroom had a good Thaw tournament. The following game is Bill's first round win over **Jim Skovron**, who is the current leader of the Montana Grad Prix.

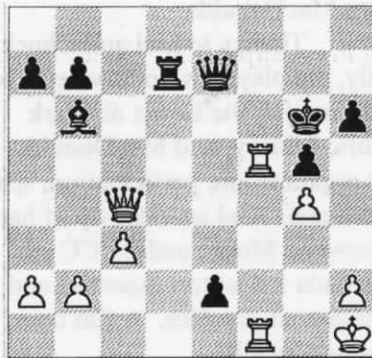
B.McBroom (1588) - J.Skovron (1831) [A04] January Thaw,

1.e4 d6 2.Nf3 Nf6 3.d3 g6 4.g3 Bg7 5.Bg2 c5 6.0-0 0-0 7.Nbd2 Nc6 8.Re1 e5 9.c3 Nh5 10.Nb3 f5 11.d4 fxe4 12.Rxe4 c4 13.Nbd2 13. d5 13...d5 14.Re1 e4 15.Ne5 Nxe5 16.dxe5 Bxe5 Black is up a pawn. 17.Nf1 Be6 18.Be3 Qf6 19.Qd2 Ng7



20.Rac1 Rad8? 21.Bg5 Qf7

25.Ne3 Nf5 26.Kh1 Nxe3 27.fxe3 Bf5 28.Rf1 Qe6 29.Rce1 Bd3 30.Rf4 g5 31.Rf3 Re8 32.e4 h6 33.e5 Be4 34.Rff1 Qxe5 35.Bxe4 dxe4 36.Qd7 Re7 37.Qc8+ Kg7 38.Qf8+ Kg6 39.g4 e3 40.Qg8+ Rg7 41.Qxc4 Rd7 42.Rf5 Qe7 43.Ref1 e2 White to move, Mate in 2.



Black resigned. 1-0 [The mate in 2 = 44.Qg8+ Qg7 45.Rf6#]



Bill McBroom at the Thaw. In his second round, Bill scored the biggest upset of the tourney with this win over **David Duke**.

B. McBroom (1588) - Duke, D (1893) [B31] January Thaw, 1.e4 c5 2.Nf3 Nc6 3.Bb5 g6 4.0-0 Bg7 5.Re1 Qc7 6.Nc3 e6 7.Bxc6 Qxc6 8.d4 Nf6 9.d5 Qa6 10.dxe6 dxe6 11.Be3 b6 12.Qd6 Bb7 13.Rad1 h6 14.Nh4 Bf8 15.Qe5 Bg7



16.Nxg6 fxg6 17.Qxe6+ Kf8 18.e5 Nd5 19.Nxd5 Re8 20.Qd6+ Kg8 21.Nc7 Black resigned 1-0

Bill McBroom's win streak ended in the third round when he play the current state champion, **Jan Johansson**.

J.Johansson (2041) - B.McBroom(1588) [B10]

1.e4 c6 2.d3 d5 3.Nd2 dxe4 4.dxe4 Nf6 5.Ng3 Bg4 6.Be2 e6 7.0-0 Bc5 8.c3 0-0 9.Qc2 Nbd7 10.Nc4 b5 11.Ne3 Bh5 12.Rd1 Qc7 13.b4 Bxf3 14.Bxf3 Bd6 15.g3 Ne5 16.Be2 Rfd8? This leads to the loss of a piece.



17.f4! Ned7 18.e5 Nxe5 19.fxe5 Bxe5 20.Bf3 Rxd1+ 21.Nxd1 Rd8 22.Be3 Bd6 23.Qf2 Nd7 24.a4 Ne5

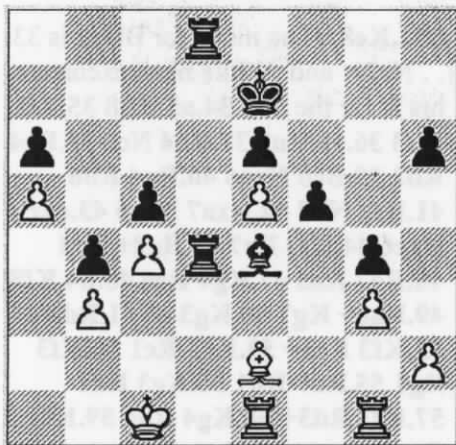
25.Be2 Nc4 26.Bxc4 bxc4 27.Bxa7 Rc8 28.Nb2 c5 29.Bxc5 Bxc5 30.bxc5 Qa5 31.Qd4 Rxc5 32.Rd1 Rd5 33.Qxc4 Rxd1+ 34.Nxd1 h6 35.Qb5 Qa7+ 36.Nf2 Qe3 37.a5 e5 38.a6 Qxc3 39.Qb7 Qa1+ 40.Kg2 e4 41.a7 e3 42.a8Q+ 1-0

In this next game from the Thaw, Nick Cohea shows how to grab the open file and bring home the win.

Kirk Lundby (1263) - Nick Cohea (1047) [B21] January Thaw, 1.20.2002

1.e4 c5 2.d4 e6 3.c3 d5 4.f3?! (e5 is better, which goes into a French opening. Moving the f pawn allows Black to rip open the position) 4...dxe4 5.fxe4 Qh4+ 6.Kd2 Qxe4 7.Qf3 Nf6 8.Bd3 Qxf3 9.Nxf3 Nc6 10.Kc2 h6 11.Bf4 g5 12.Be5 Nxe5 13.Nxe5 a6 14.Rf1 Bg7 15.Nd2 Rf8 16.Ne4 Nxe4 17.Bxe4 f5 18.Bd3 Bxe5 19.dxe5 Bd7 20.b3 Ke7 21.c4

White should not place his pawns on white squares due to his white square bishop is becoming a "bad bishop." White should try to put his pawns on black squares. 21...b5 22.a4 b4 23.a5 Bc6 24.g3 g4 25.Rae1 Rad8 26.Rf4 Bf3 27.Be2 Be4+ 28.Kc1 Rd4 29.Rff1 Rfd8 Black is in control of the open file, and thus in control of the game. 30.Rg1



30... Bd3? Black's plan here is 30... Rd2 following up with 31... Rc2+

and White has to give up material to stay in the game. 31.Bxd3 Rxd3 32.Rd1 Rxb3 33.Rxd8 Kxd8 34.Rd1+ Ke7 35.Rd6 Rc3+ 36.Kb2 Rxc4 37.Rxa6 Rd4 38.Rc6 Rd2+ 39.Kc1 Rxb2 40.a6 Ra2 41.Kb1 Ra5 42.Kb2 c4 43.Kc2 Rxe5 44.a7 Ra5 45.Rc7+ Kd6 46.Rh7 Kc6 47.Rxb6 Rxa7 48.Rxe6+ Kd5 49.Rf6 Ra2+ 50.Kb1 Rf2 51.Rb6 Kc5 52.Re6 b3 53.Kc1 c3 54.Re7 Rf1+ 55.Re1 Rxe1# 0-1

During the Thaw tourney, Murray Strong played against Rick Edmiston in a sharp battle. White sags a piece early to open lines to Black's King.

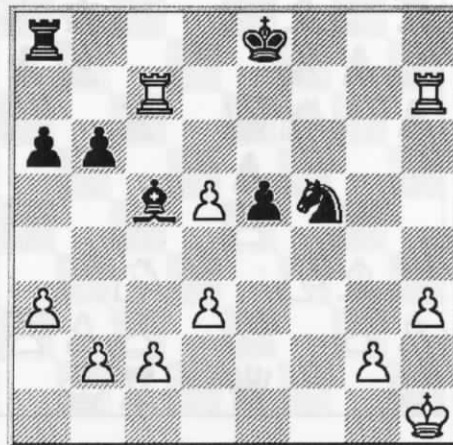
M. Strong (1383) - R. Edmiston (1171) [C46] January Thaw,

1.e4 e5 2.Nf3 Nc6 3.Nc3 Bc5 4.Bc4 d6 5.h3 a6 6.a3 Nf6 7.d3 0-0 8.Bg5 h6 9.Bh4 Qe7 10.Nd5 Qd8 11.0-0 g5 12.Bxg5 hxg5 13.Nxg5 Kg7 14.Kh1 Rh8



15.f4 (Fritz says the best move for White is 15. Nxf7 if Kxf7 16. Nxc7+. This is not an easy move to accept, especially since White has sacked a piece for the attack.) 15...Nxd5 16.Bxd5 Qe7 17.Qf3 Nd4 18.Qg3 Kf8 19.fxe5 Ne2 20.Qf3 Nd4 21.Qxf7+ Qxf7 22.Rxf7+ Ke8 23.Nh7 Be6 24.Rxc7 Bxd5 25.exd5 b6 26.Rf1 dxe5

27.Rff7 Rxb7 28.Rxb7 Nf5

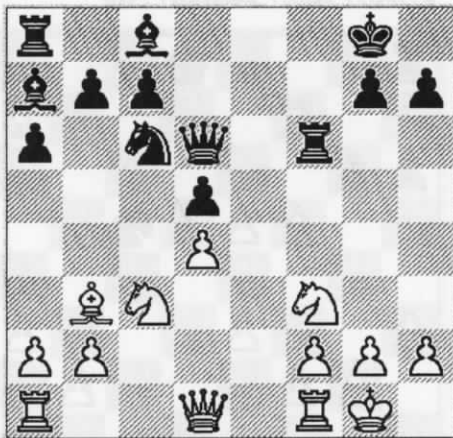


29.Ra7?! (The move here for White is 29. Rxc5 bxc5 30.Rh8+ which picks up the R on a8). 29... Rd8 30.Rxa6 Rxd5 31.Ra8+ Rd8 32.Rxd8+ Kxd8 33.Kh2 Nd4 34.c3 Ne6 35.g4 Nf4 36.d4 exd4 37.cxd4 Bxd4 38.b3 Nd5 39.Kg3 Ke8 40.Kf3 Bb2 41.a4 Ba3 42.g5 Be7 43.h4 Kf8 44.Ke4 Nc3+ 45.Kf5 Nd5 46.Ke6 Nf4+ 47.Kf5 Nd5 48.g6 Kg8 49.Ke6 Nf4+ 50.Kxe7 Nxg6+ 51.Kd6 Kxh7 52.Kc6 Nxh4 53.Kxb6 Nf5 54.a5 Nd6 55.a6 Nc8+ 56.Kb7 Nd6+ 57.Kc7 Nb5+ Black resigns 1-0

In the following game, Rick Edmiston came back for the win. In the middle of the Mr. Spaulding pulls off a nice combination, however, Rick comes back to win the point.

J.B. Spaulding (1396) - Rick Edmiston (1171) [C70] January Thaw, 1.e4 e5 2.Nf3 Nc6 3.Bb5 a6 4.Ba4 Bc5 5.c3 Nf6 6.d4 exd4 7.cxd4 Ba7 8.Nc3 d5 9.e5 Nh5 10.0-0 0-0 11.Bg5 f6 12.exf6 Nxf6 13.Bb3 Qd6 14.Bxf6 Rxf6 (See diagram, next page)

**Crocus Open
April 13-14, 2002**



15.Ne4! Qf4 16.Nxf6+ Qxf6
 17.Bxd5+ Kh8 18.Re1 Bd7 19.Rc1
 Rb8 20.a3 Qd6 21.Ba2 Nxd4
 22.Re3? Nxf3+ 23.Qxf3 Bc6
 24.Qe2 Bxe3 25.Qxe3 A legible
 score sheet ends here. Black goes
 on to win. 0-1.

Groundhog Open

On February 2, 2002, twenty players came to Bozeman, Montana for the five round, game in :50, tournament. With the faster time controls, players were able to get in five games in one day. Jan Johansson came in first with a perfect 5-0. In second, based on performance rating, came David Duke, with 3.5 points. Jesse Gardner-Durbin had an excellent tournament. Rated at 1190, Jesse got a first round draw with Michael Long. Jesse proceeded to hammer out three more wins during the tourney for a total of 3.5 points. Jesse took home the trophy for the best under 1600. Chad Armstrong had two points, which landed Chad the trophy for the best Unrated. Conrad Donovan won the biggest upset trophy for his first round win over Steve Scarff.

Thanks to Tournament Director Steve Scarff, Devin Gray, and the Bozeman Chess Club for putting on this well attended and fun tournament. (Due to circumstances beyond control, games from the Groundhog Open will appear in the next issue.)

Games from the UCCC

The University Community Chess Club out of Missoula Montana meets every week and plays rated games. Here are some of the games played recently.

B.McBroom(1569) - Joe Doerr
 (1883) [A46] UCCC 3rd Fall Open,
 Nov.15.2001

1.d4 Nf6 2.Nf3 e6 3.Bg5 h6 4.Bxf6
 Qxf6 5.e3 d6 6.Bd3 g5 7.Nbd2 Bg7
 8.Ne4 Qe7 9.c3 Nd7 10.Qe2 Nf6
 11.Nxf6+ Bxf6 12.Nd2 Bd7 13.Ne4
 Bg7 14.Ng3 0-0-0 15.0-0-0 f5
 16.Bb5 a6 17.Bxd7+ Rxd7 18.Qc2
 Rf8 19.Rhe1 Qf7 20.Ne2 h5 21.f4
 g4 22.Rf1 d5 23.Kb1 Kb8 24.Nc1
 Rc8 25.Nd3 Qe7 26.Qb3 Rd6
 27.Qa3 Bf6 28.Rd2 Qe8 29.Qb3
 Rb6 30.Qc2 Be7 31.Kc1 Qb5
 32.Kd1 c5 33.a4 Qe8 34.Ke2 Bd6
 35.Rb1 h4 36.dxc5 Bxc5 37.Nxc5
 Rxc5 38.b3 Rbc6 39.Rd3 e5
 40.Rbd1 exf4 41.Kf1 fxe3 42.Rxd5
 e2+ 43.Qxe2 Qxe2+ 44.Kxe2 Rxc3
 45.Rxf5 Rxb3 46.Rf4 Rc2+ 47.Rd2
 Rxd2+ 48.Kxd2 Rb2+ 49.Kc3
 Rxc2 50.Kc4 Kc7 51.Kc5 Rc2+
 52.Kd5 g3 53.hxg3 hxg3 54.Rg4 g2
 55.Rg7+ Kb6 White resigns. 0-1

Romie Carpenter and Ron Erickson
 play to a draw in the next game.

R. Erickson(1714) - Carpenter,R
 (1814) [A05] UCCC 2nd Fall Open

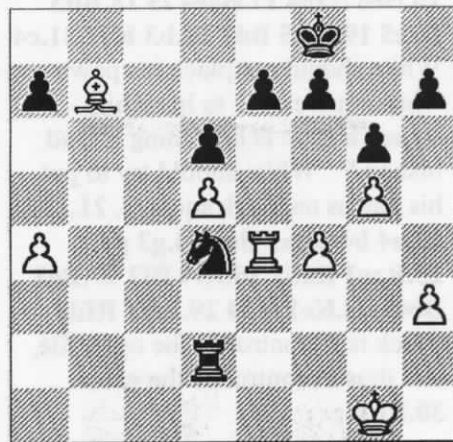
1.Nf3 Nf6 2.b4 g6 3.d4 Bg7 4.e3 0-
 0 5.c4 d6 6.Be2 c5 7.bxc5 dxc5
 8.Bb2 cxd4 9.exd4 Nbd7 10.0-0
 Qc7 11.Nc3 a6 12.Rc1 Re8 13.d5
 Nc5 14.Na4 Nxa4 15.Qxa4 Bd7
 16.Qb3 Bh6 17.Be5 Qc8 18.Rcd1
 Ne4 19.Qb2 Nd6 20.Qd4 f6 21.Bg3
 Nf5 22.Qc3 Qc5 23.Nd4 Nxd4
 24.Qxd4 Rac8 25.Qh4 Bg7 26.Bd3
 e5 27.dxe6 Bxe6 28.Rc1 Qa3

29.Rfd1 b5 30.Qd4 bxc4 31.Bxc4
 Bxc4 32.Rxc4 Qe7 33.Rxc8 ½-½

Michael Jensen and Rudy Katzl
 have played numerous times. In this
 game, Rudy comes out on top.

Jensen,M - Katzl,R [B34]
 First Winter Open, 20.12.2001

1.e4 g6 2.d4 Bg7 3.Nc3 c5 4.Nf3
 cxd4 5.Nxd4 Nc6 6.Be3 Nf6 7.Be2
 Qa5 8.0-0 0-0 9.f4 d6 10.Nb3 Qc7
 11.g4 Be6 12.g5 Nd7 13.Nd5 Bxd5
 14.exd5 Na5 15.Nxa5 Qxa5 16.c3
 Nb6 17.Bf3 Nc4 18.Bd4 Nxb2
 19.Qe2 Bxd4+ 20.cxd4 Qc3 21.Qe4
 Qd3?! 22.Rab1 Qxe4 23.Bxe4 Nc4
 24.Rxb7 Rfe8 25.Bd3 Ne3 26.Bb5
 Rab8 27.Bxe8 Rxb7 28.Re1 Nf5
 29.Bc6 Rb2 30.a4 Rd2 31.Re4 Kf8
 32.h3 Nxd4 33.Bb7?!



33...Ke8 (The move for Black is 33.
 .. Ne2+ and White must exchange
 his R for the N.) 34.a5 Kd8 35.Kf1
 Nb3 36.a6 Ra2 37.Rb4 Nc5 38.Rc4
 Rb2 39.Bc6 Nxa6 40.Ra4 Rb6
 41.Kf2 Nb8 42.Rxa7 Nxc6 43.dxc6
 Rxc6 44.Kf3 Rc7 45.Ra8+ Rc8
 46.Ra7 Ke8 47.Kg4 Rc6 48.h4 Kf8
 49.Ra8+ Kg7 50.Kg3 e6 51.Rd8 d5
 52.Kf3 Rc3+ 53.Kg4 Rc1 54.Kf3
 Rg1 55.Rd7 Rh1 56.Kg3 Rd1
 57.Kf3 Rd3+ 58.Kg4 Rd4 59.Kf3
 Scoresheet ends here. Black won.
 0-1

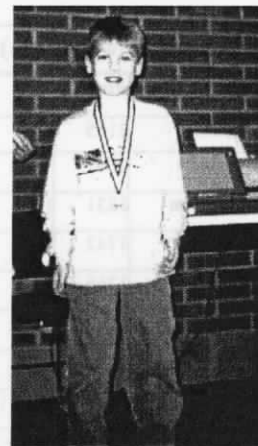
Junior Tournament - Helena, MT., January 19, 2002



Gavin Drake - 1st - Grades 6 & 7



Kevin Ferris - 1st - Grades 4 & 5



Ethan Tilly - 1st - Grades 2&3



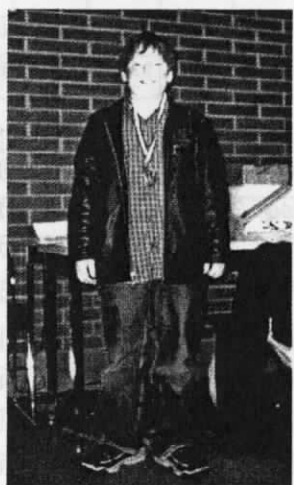
James Burdick - 2nd - Grades 6&7



Danielle Drake - 2nd - Grades 4&5



Dylan Allen - 2nd - Grades 2&3



Zack Bachland - 3rd - Grades 6&7



A group picture from the award ceremony. Included in this picture are Owen Harwell (3rd place - Grades 4&5) and Dalton Allen (3rd place- Grades 2&3). Owen is on back row, fifth from the right, and Dalton is also on the back row, first one from the right. Thanks to **Chuck Tilley** for his help in putting on the tourney.

Tournament Tables

January Thaw (Helena) January 19-20, 2002

#	Name	Rtng	Rd 1	Rd 2	Rd 3	Rd 4	Rd 5	Tot
1	Greg Nowak	2165	W7	W4	W5	W2	D3	4.5
2	Jan Johansson	2041	W16	W8	W6	L1	W5	4.0
3	James Skovron	1831	L6	W13	W16	W12	D1	3.5
4	Ron Erickson	1742	W15	L1	W10	W9	H	3.5
5	Michael Long	1765	W10	W12	L1	W6	L2	3.0
6	Bill McBroom	1588	W3	W9	L2	L5	W11	3.0
7	Murray Strong	1383	L1	W14	L9	W16	W10	3.0
8	Sherwood Moore	1663	W14	L2	H	W11	D9	3.0
9	David Duke	1893	W11	L6	W7	L4	D8	2.5
10	Rick Edmiston	1171	L5	W18	L4	W13	L7	2.0
11	Melvin Drake	1183	L9	W15	W13	L8	L6	2.0
12	Devon Rule	Unr	W18	L5	W14	L3	L13	2.0
13	William Furdell	1421	W17	L3	L11	L10	W12	2.0
14	Nick Cohea	1047	L8	L7	L12	W17	W16	2.0
15	Chuck Tilly	Unr	L4	L11	F	H	W17	1.5
16	Kirk Lundby	1263	L2	W17	L3	L7	L14	1.0
17	Alan Cartwright	Unr	L13	L16	X	L14	L15	1.0
18	J.B. Spaulding	1396	L12	L10	U	U	U	0.0

Ground Hog Open (Bozeman) February 2, 2002

#	Name	Rtng	Rd 1	Rd 2	Rd 3	Rd 4	Rd 5	Tot
1	Jan Johansson	2027	W9	W11	W6	W2	W3	5.0
2	David Duke	1899	W13	W14	D3	L1	W6	3.5
3	Sherwood Moore	1655	W20	W12	D2	W5	L1	3.5
4	Jesse Gardner-Durbin	1190	D5	W15	W10	L6	W11	3.5
5	Michael Long	1770	D4	W7	W11	L3	W8	3.5
6	Daniel McCourt	1686	W16	W8	L1	W4	L2	3.0
7	Conrad Donovan	904	W15	L5	W9	L11	W14	3.0
8	Mike Shuyler	1218	W18	L6	W16	W14	L5	3.0
9	Melvin Drake	1195	L1	W18	L7	W16	W15	3.0
10	Murray Strong	1383	L12	W20	L4	W17	W13	3.0
11	Devin Gray	1468	W19	L1	L5	W7	L4	2.0
12	Chad Armstrong	Unr	W10	L3	L15	L13	W19	2.0
13	Rick Edmiston	1171	L2	W19	L14	W12	L10	2.0
14	Kirk Lundby	1263	W17	L2	W13	L8	L7	2.0
15	Steven Scarff	1661	L7	L4	W12	W18	L9	2.0
16	Phillip Clark	1016	L6	W17	L8	L9	W20	2.0
17	Michael Kent	Unr	L14	L16	W20	L10	W18	2.0
18	Matthew Haag	Unr	L8	L9	W19	L15	L17	1.0
19	Jim Cadwallader	707	L11	L13	L18	W20	L12	1.0
20	Brett Schandelson	708	L3	L10	L17	L19	L16	0.0

UCCC (Missoula) 2001 Second Fall Open

#	Name	Rtng	Rd 1	Rd 2	Rd 3	Tot
1	Rudolf Katzl	1907	W7	W3	D2	2.5
2	Ron Erickson	1714	W6	D5	D1	2.0
3	Michael Jensen	1853	W4	L1	W6	2.0
4	Daniel McCourt	1661	L3	W6	D5	1.5
5	Romie Carpenter	1815	U	D2	D4	1.0
6	William McBroom	1569	L2	L4	L3	0
7	Sherwood Moore	1664	L1	U	U	0

UCCC (Missoula) 2001 Third Fall Open

#	Name	Rtng	Rd 1	Rd 2	Rd 3	Tot
1	Rudolf Katzl	1907	W3	D2	W4	2.5
2	Joe Doerr	1883	W4	D1	U	1.5
3	Ron Erickson	1714	L1	L4	W5	1.0
4	William McBroom	1569	L2	W3	L1	1.0
5	Daniel McCourt	1661	U	U	L2	0.0

UCCC (Missoula) 2001 First Winter Open

#	Name	Rtng	Rd 1	Rd 2	Rd 3	Tot
1	Rudolf Katzl	1900	W2	W3	W4	3.0
2	Michael Jensen	1872	L1	W4	W3	2.0
3	William McBroom	1588	U	L1	L2	0
4	Sherwood Moore	1663	U	L2	L1	0

Blizzard (Clandestine Chess Club) Feb. 16, 2002 (G/60)

#	Name	Rtng	Rd 1	Rd 2	Rd 3	Tot
1	Dan McCourt	1703	W9	W2	W3	3.0
2	Doug Hansen	1703	W7	L1	W6	2.0
3	Mike Stubblefield	1627	W8	D4	L1	1.5
4	Bob Leader	1495	U	D3	W7	1.5
5	Greg Nowak	2171	W6	U	U	1
6	Richard Hall	1559	L5	W9	L4	1
7	Scott Stanley	1496	L2	W9	L4	1
8	Robert Hayes	1251	L3	L6	W9	1
9	Don Robinson	1350	L1	L7	L8	0

March 16 - 17, 2002 - St. Paddy's Day Op

Format: 5 Rounds, SS **Time Controls:** Game/ 90

402 N. 32, Billings, Montana. **Prizes:** All money will be returned after payment of costs, expected to be around \$125.00. 1st - 42%, 2nd - 24%, 3rd - 14%, Biggest upset-10%, Best Junior- 10% (if more than 1 junior). **Entry Fee:** \$20 by March 15, \$25 at the door. (Juniors half price) **Rounds:** Sat: 11:00 am, 2:30 pm, 7 pm, Sun: 9 am, 12:30 pm. **Registration:** 10:00 - 10:45 am. **Entries to:** David Duke, P.O. Box 3052, Billings, MT. 59103. Phone: 254.2121(w), 254.8474 (h). **Other:** Coffee and donuts, limited overnight accommodations based on 1st notice.

Billings, MT. (Billings' Grand Prix Event)

Billings's YMCA (basement of recreation center),

March 23, 2002 - Ides of March Chess Challenge - Missoula, MT.

Format: 3 Rounds, SS, USCF rated **Time Controls:** Game/60 **Site:** Clandestine Chess Club, 125 W. Main (down the hall) **Prizes:** Based on \$60 in entries. 1st - \$13, 2nd - \$11. **Entry Fee:** \$10, \$15 at the door, Youth 17 and under, \$3 less. **Registration:** 12:30 - 12:45 **Rds:** 1 pm., 3:10 pm., 5:20 pm. **Entries:** Greg Nowak, Hellgate Station, P.O. Box 8572, Missoula, MT., 59807 or Clandestine Chess Club, 125 W. Main, open at 6pm.

April 13-14, 2002 - Crocus Open - Missoula, MT. (Grand Prix Event)

Format: 5 Rounds, SS **Time Controls:** Game/ 90 **Site:** Room 202, Liberal Arts Building, U of M Campus, Missoula, Montana. **Prizes:** (Based on 20 entries). First three places: \$200 (\$100, \$60, \$40); Four Classes: \$120 (\$30 each) 1700-1899, 1500-1699, 1300-1499, and LT 1300. Biggest upset (both players non-provisional): \$20. **Entry Fee:** \$20 by April 12, \$25 at the door. (Juniors 1/2 price), **Rounds:** Sat: 11:00 am, 2:30 pm, 7 pm, Sun: 9 am, 1:00 pm. **Registration:** Sat: 10:00 - 10:45 am. **Entries to:** Dan McCourt, 608 West Central, Missoula, MT., 59801 (406) 721.0254. E-mail: dmcc@micro-mania.net. PayPal entries: <https://www.paypal.com/refer/pal=dmcc%40micro-mania.net> **Other:** Coffee and donuts, limited overnight accommodations based on 1st notice; 1/2 point byes for rounds 4 or 5 must be requested before first game.

April 27, 2002 - Montana Junior Championship - Helena, MT.

Format: 5 Rounds, SS or RR, depending on number of entries. **Time Controls:** Game/ 30 **Site:** Lewis and Clark Library, 120 South Last Chance Gulch, Helena, Montana. **Prizes:** Trophies for the following divisions: grade 9 through age 18 (19?), grades 6-8, and grades 1-5. Winner of topdivision will be the "State Junior Champ." Younger players would be permitted to "move up" to highest level of competition. **Entry Fee:** \$5 for MCA members, \$10 for non-members. **Rounds:** First round, 11:30 am. **Registration:** 10:30 - 11:15 am. **Entries to:** Mel Drake, 5950 Canyon Ferry Road, Helena, MT. 59602 Phone: 475.3481

May 4, 2002 - Ides of March Chess Challenge - Missoula, MT.

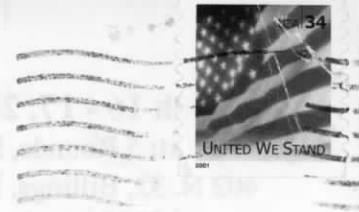
Format: 5 Rounds, SS, unrated **Time Crols:** G/25 **Site:** Shack Rest., 222 W. Main **Prizes:** Based on \$100 in entries. 1st - \$25, 2nd - \$20, 3rd - \$15. **Entry Fee:** \$10, \$15 door, Youth, \$3 less. **Registration:** 11:30 - 11:45 **Rds:** 12 pm., 1pm., 2:10pm., 3:10pm., 4:20 pm. **Entries:** Greg Nowak, see info. above, 3.23.02.

June 1 -2, 2002 - Montana State Open - Missoula, MT.

Format: 5 Rounds, SS **Time Controls:** TBA **Site:** Missoula Children's Theatre, 200 North Adams Street, Missoula, MT. The primary access to the building will be the Main Street entrance on the south side of the building. **Prizes:** Trophies, Title - MT. State Open Champion. **Entry Fee:** Probably \$20. **Rounds:** TBA. **Registration:** TBA **Entries to:** Dan McCourt, 608 West Central, Missoula, MT., 59801 (406) 721.0254. E-mail: dmcc@micro-mania.net. PayPal entries: <https://www.paypal.com/refer/pal=dmcc%40micro-mania.net> **Other:** Coffee and donuts, limited overnight accommodations based on 1st notice; 1/2 point byes for rounds 4 or 5 must be requested before players first game.

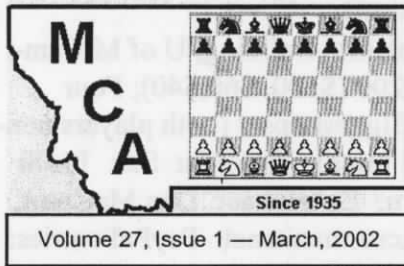
Montana Chess Association

David Duke
P.O. Box 3052
Billings, MT 59103



10/02

Dan McCourt
608 W. Central
Missoula, MT 59801



Montana State Open

June 1 - 2, 2002
Missoula, Montana

Blizzard (Clandestine Chess Club) Feb. 16, 2002 (G/60)						
#	Name	Rtng	Rd 1	Rd 2	Rd 3	Tot
1	Dan McCourt	1703	W9	W2	W3	3.0
2	Doug Hansen	1703	W7	L1	W6	2.0
3	Mike Stubblefield	1627	W8	D4	L1	1.5
4	Bob Leader	1495	U	D3	W7	1.5
5	Greg Nowak	2171	W6	U	U	1
6	Richard Hall	1559	L5	W9	L4	1
7	Scott Stanley	1496	L2	W9	L4	1
8	Robert Hayes	1251	L3	L6	W9	1
9	Don Robinson	1350	L1	L7	L8	0

St. Paddy's Day Open
March 16-17, 2002, Billings, MT.

Crocus Open
April 13-14, 2002, Missoula, MT.

Junior Championship
April 27, 2002, Helena, MT.