

MONTANA

CHESS NEWS

Volume 26, Issue 1 — March, 2001

In this issue:

A Newsletter Puzzle Contest

Johansson hot at January Thaw and Midwinter Open

A report on Spokane's Collyer Memorial

Player Profile: *Greg Nowak*

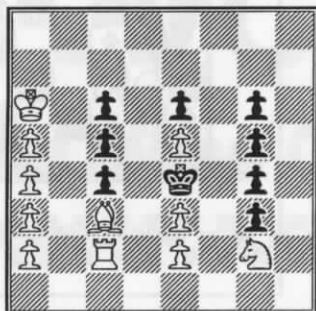
The Montana Invitational Debate

Impractical Chess — A Puzzle Contest

Interesting problems you are not likely to encounter over the board.

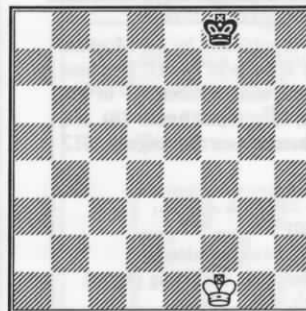
Are you somebody who never wins anything? Well here's a contest with odds considerably better than the google-to-one offered by lotteries. Send in the correct solution to any **one** of the three classic puzzles given below and your name will into a hat for a free membership renewal together with a pair of nice chess books that will help your game: *The Art of Attack* by Vukovic and *Secrets of Rook Endings* by John Nunn.

1. Legend has it that there are four ancient pillars of marble that mark the burial place of the inventor of chess. His disciples, to honor his memory, erected this monument, and called it "The Four Columns of Sissa":



White to move and mate in four. (Lloyd)

2. Next, for those of you with way too much time on your hands, here is another old problem by Loyd called The Despoiled Kings. Your task is to play a legal game of chess and create the position below in the fewest possible moves.



Hint: The solution requires fewer than 20 moves,

3. For this last problem, arrange the white pieces and pawns as at the start of the game. Your task is to place the lone black king on a square from which white can then force mate in three. What square is it?

There is a six-week time limit for all solutions.

Answers will appear in the next issue, along with an announcement of the lucky winner.

In the trenches:

Recent issues to come before the MCA Board of Directors

Since the last newsletter, the MCA Board has discussed several bylaw modifications, and has heard from members about other proposals which will be placed on the agenda for the Annual Business Meeting in May. Remember to submit your own agenda items before the next Newsletter goes to press on May 1.

The Board debated and voted on several new membership rates, with some changes passing and others not. First there was the new discounted rate for family memberships. For \$15 all the members of one family (living at the same address) can join the MCA. Family members will receive and share a single issue of the newsletter.

A similar discount for Seniors (\$8 annual fee instead of the regular \$10 rate) failed on a 3-2 vote. The proposal would have defined the starting senior age as 55, and some members preferred to make it age 50. Neither idea gained enough support to pass.

Discounts for 3-year memberships passed on another narrow 3-2 vote. Proponents thought that this discount,

which applies to all membership types, would foster greater long-term stability in the organization. Effective immediately membership rates are as listed in the following chart:

New Dues Schedule	1 year	3 years
Regular	\$10	\$25
Junior (under 18)	\$5	\$12
Family	\$15	\$35

A proposal from Suits to raise the age limit for qualification for the Senior Championship from 50 to 55 failed on a 3-1 vote.

Secretary-Treasurer Thad Suits and President Alex Dawson worked together to hammer the bylaws into a more easy-to-use form. They focused on changes in bylaw organization, rather than substantive changes, and these restructured bylaws will be printed in full in the next issue of MCN.

In the hopes of increasing interest in the Invitational, the Board approved a plan to add a satellite tournament for all players who do not qualify for the Invitational.

The Board has also been hearing from the membership. Michael Long has again requested a vote on restoring the 10-player Closed format. He also wants two constitutional issues addressed at the meeting: What constitutes a valid proxy vote, and what residency requirements the MCA should have for resident member status. Both these issues are dealt with in the MCA constitution, but last year's debates on these points suggest that amendments either clarifying current practice or revising it could be in order.

Doug Hansen of Great Falls has vigorously objected to the rating limit of 1700 or over imposed on the Montana Invitational and the automatic seeding of the winner into the State Closed. See page 5 for a further discussion of this issue.

Hansen has also protested MCA policy regarding postings on the MCA Website. He objected after Webmaster Paul Motta deleted some messages he had posted about the Invitational in the website discussion room. Motta states that he removed them because they were inflammatory and uncivil, a claim which Hansen denies.

MCA Board Members (2000-2001)

Alex Dawson - President (443-7903)
 Paul Motta - Vice President (721-5599)
 Greg Nowak - Western V.P. (549-7805)
 Dennis Petrak - Eastern V.P. (452-4786)
 Thad Suits - Secretary/Treasurer (453-6160)

Montana Chess News is published by the Montana Chess Association, an affiliate of the U. S. Chess Federation. Subscription and membership in the MCA is \$10/yr regular, \$5/yr junior (under 18), \$15 family. Three year discounts are \$25 regular, \$12 junior, \$35 family.

Editor - Thad Suits, 2015 4th Ave N.,
 Great Falls, MT 59401
 (406) 453-6160 E-mail: suits@initco.net
 All submissions are welcome, including photos.

Publishing Schedule:

Issue 1 - Mar. 1, Issue 2 (Special for the Open) - May 10, Issue 3 - July 15, Issue 4 - Sept. 25, Issue 5 - Dec. 8. Deadline for most submissions is ten days before the publication date.

MCA Website: www.montanachess.com

Log on with user name "endgame" and password "checkm8"

Grand Prix Race Leaders

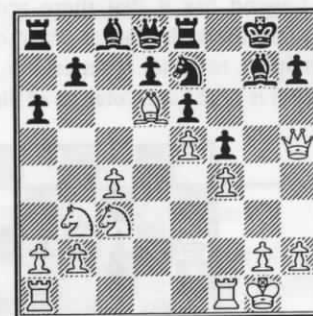
1	LONG,M	23.57
2	JOHANSSON,J	22.33
3	SKOVRON,J	19.51
4	MCCOURT,D	14.88
5	CHESTER,J	13.17
6	NOWAK,G	8.50
7	MCKEAN,R	7.75
8	JENSEN,M	7.65
9	MOTTA,P	6.80
10	SUITS,T	5.98

Biggest Upset to Date

Curtis Preston — 433 points

Did you find (or miss) a subtly sharp move in one of your games? If so, send it to the editor and ask

What's the Cruncher?



White to move and crunch.

Jan Johansson in winning form at Thaw *Chester and Skovron trail the Champ by half a point*

Helena played host to its third annual January Thaw on January 20-21 and, with 17 players participating, had the best turn-out yet. State Co-champion Jan Johansson of Emigrant led the field with a score of 4.5 to take home the \$100 first place money. This puts him back on a winning track after a disappointing showing at the Chinook Open last October.

The prize fund, beefed up with some extra cash for Grand Prix events that was secured by the Board this season, ended up being spread throughout the field. Near the top again this year was last year's co-winner Jim Skovron of Great Falls, but tied with him for second place was the surprising James Chester. James, rated 1353, had probably the best tournament of his career with four wins and only one loss. The strong showing also meant a gain of 59 rating points for the spelunker from Eureka.

Owing to the large proportion of lower rated players, tournament director Doug Hansen and tournament organizer Mel Drake decided after registration to establish a separate cash prize for the under 1500 group. That division con-

sisted of 12 players, including three unrated and two provisionally-rated. Its \$60 prize was split between two up-and-coming Helena stars, Nick Warner and Aldin Barnes.

Other prize winners were Michael Long of Livingston, who took the Senior prize after just missing out on third place, and Curtis Preston of Boulder, who shocked Bob McKean in the third round with a 433 point upset win to earn the \$25 biggest upset award. This also just beat out the previous best upset of the year by six points.

Players clearly liked the format of the event, with its faster time controls (game/90) and the later starting times that went with them. Even such confirmed slow-chess fans as Bill Furdell, who started out strong with two wins the first day but faltered after that, had nothing but nice things to say about the structure of the tournament. Other organizers might want to keep Mel Drake's success with this format in mind as a way of easing the burden on our traveling players without skimping on the number of rounds.

Midwinter Open and the Collyer,
see page 11.

Northern Knights foursome wins Team Tourney —by Greg Nowak

On Saturday, December 2, five teams vied for the 6th Northwest Team Tourney title, held in the banquet room of Double Front Chicken in Missoula.

Northern Knights, the dark horse team led by Doug Hansen, trotted away with first place on tie breaks. They had 3.5 match points and 14 game points while my *Seismic Force* also had 3.5 match points, but only 11.5 game points. The *Northern Knights* swept every team 4-0 except for *Seismic Force*, with which they drew at 2-2.

With the surprise appearance of Hans Anderson, Dan McCourt's team, *Nine-Inch Nails*, was also in contention, but they lost out owing to what Dan called "an amazing collection of bad Karma." Probably the upset of the day

was Dyers over McCourt. And if only Leader, rated 1450, had looked at McCourt's dropped flag "before" McCourt's checkmate!

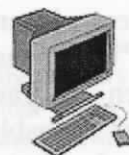
Board winners this time were Greg Nowak (board 1), Tom Dyer (board 2), Eric Gilbertsen, Dan Robinson, Dale Gross (tied on board 3), and Miles Kinney on board 4.

Another déjà vu: For the third time my team was tied for first only to lose it in the last round.

We had the best site yet. Great chicken, and a spacious, well lit, quiet room. Add to that being able to watch the Griz squash the spiders on TV with the sound off. Watch for another team event in either late April or early May.

Maybe we'll win next time!

The Web Corner



by

Paul Motta
Webmaster

www.montanachess.com

There has been progress at the MCA website during the past few months. A section showing the current Grand Prix standings was added, and now a "Chess Quote of the Month" is featured on the member section home page. The new revised Bylaws were posted at the site in January, and every effort is being made to keep the USCF ratings of Montana players updated on a monthly basis. Plans for the future include a more extensive calendar of the events scheduled for the entire year.

Also in January, the email chess section was slightly refined. Now any members interested in making themselves available for email games with other members can use the designated form and be put on the "available to play" list.

The email chess section featured at the MCA website is unique – your game scores and board positions are stored there. This means that you don't have to do any special scorekeeping offline. You simply view the game board in the browser window, and then use the form to submit your move and wait for your opponent to reply. It's really easy!

Currently, Alex Dawson, the MCA President and Montana State Co-Champ, is conducting two games with another MCA member. The games are sharp, and the two players are having fun with their interesting battles. Email chess is a great form of chess to participate in during the cold winter months when OTB events are few and travel is difficult. Give it a try!

Don't forget the message boards at the site where you can find out about ride sharing and house sharing for the coming tournaments. Montana chess clubs can also advertise their events on a special message board.

That's it for now. I hope you will join the others on the Web. Log on with username "endgame", and the password "checkm8".

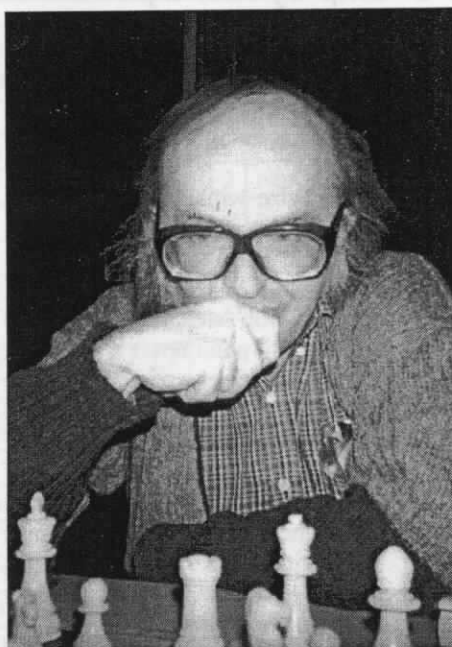
MCA player profile: Greg Nowak

How many chess players in Montana can boast that they have gotten a draw against Bobby Fischer? Probably just one: Greg Nowak, better known to those players who dread facing him over the board as the *Octopus*.

Fischer isn't the only big name that the Octopus has had the honor of playing. A list of the giants he has faced over the years reads like a page out of the *Who's Who* of chess: Ljubojevic, Larsen, Trifunovic, Reshevsky, Acers (whom he beat), and Donaldson (with whom he drew last year in Spokane).

Many of these games took place in Greg's home town of Milwaukee, Wisconsin where, at the age of nine, he taught himself the moves of the game. He quickly established a reputation as the unbeatable kid, winning a city-wide youth tournament sponsored by the *Milwaukee Journal* five years in a row before being "expelled" to give some other players a chance.

At various times in his life chess has amounted to a full-time job for the Octopus. In his teens, inspired by such classics as Emmanuel Lasker's *Common Sense in Chess*, and Hans Kmoch's *Pawn Power in Chess*, Greg was at a board forty hours a week. More recently, he decided in 1994 to have a go at being a professional chess player, founding the Clandestine Chess Club in Missoula. He admits it has been a struggle at times, given the lack of a big population base to work with and competition from what



he views as a culture that worships passive entertainment. He has continued to plug away at it, though; since moving here in 1991, he has introduced high-level play to hundreds of Montanans, and indirectly to thousands more, given his status in Missoula as a chess celebrity.

It was through a twist of fate that the Octopus came here in the first place. Back in Milwaukee he was struck by a car while he was walking and had to undergo surgery. The rehabilitation that followed required him to give up his job as a mail clerk — a job he had held for fifteen years. Fortunately, the legal settlement he received from the driver gave Greg the opportunity to start over in a new town. Having visited Missoula once (he played in a Valentine Open when on a vacation in the Northwest), the idea of moving to Montana appealed to him.

Formerly a frequent traveler to tournaments around the country,

travel is hard for the Octopus these days. Nevertheless, he says he hopes to compete in another strong masters event before he is "over the hill." Now a mere 53, he no doubt has quite a few years of great chess left in him.

With so much chess activity to his credit there are many suitable games with which this profile could end. As representative of Greg's style of play as any is this victory in the inaugural January Thaw over Alex Dawson.

Nowak, Greg (2200) - Dawson, Alex (1993)
English—Symmetrical [A36]
January Thaw, Helena, 1999

1.g3 c5 2.c4 g6 3.Bg2 Nc6 4.Nc3 Bg7 5.
a3 b6 6.d3 Bb7 7.Rb1 d6 8.Nh3

A typically iconoclastic move from the Octopus. He puts his knight on the rim, knowing that the rules of proper development are sometimes meant to be broken.

8...Qd7 9.Nf4 Nf6 10.Bd2 e6 11.h4!?
Ne7 12.Bxb7 Qxb7 13.Qa4+ Nd7 14.0-0-0
15.b4 Nf6 16.e4 Nd7 17.Nb5 Qc6 18.Nc3
Ne5 19.f3?



Black can win the pawn with 19...
Nxf3+! 20.Rxf3 Bxc3 21.Qxc6 Bd4+ etc.

19...Qxa4 20.Nxa4 N7c6 21.Be3 Rad8
22.Kg2 Rd7 23.b5 Nd8? 24.Rbd1 f5 25.
exf5 exf5 26.Nd5 Ne6 27.Nac3 Rd7f 28.
Ne2 Ne7 29.Nxc7 Rxc7 30.Nf4 Re7 31.
Nd5! Ref7 32.Bf4 h6 33.a4 Kh7 34.Bxe5!?

With Black's flag hanging Greg kicks into the "blitz mode" of which he is a master, choosing simple moves to avoid throwing it all away.

34...dxe5 35.h5 g5 36.g4 fxg4 37.fxg4
Rxf1 38.Rxf1 Time. 1-0

The Montana Invitational: Pros and cons

This month the first ever Montana Invitational will take place in Missoula. The MCA Board approved this new event to add variety to the tournament schedule and to provide a new way to qualify for the Closed. The winner of the top section of this tournament, (a section open only to resident MCA members rated 1700 or above), goes on to play in the next Closed Championship. This plan has caused some controversy even before the inaugural tournament, and below are two opinions. Others may find different things to like and dislike about the Invitational, but these two guest editorials sum up the main points.

Class play is fun and it sharpens your skills by Paul Motta

The Invitational is a new idea meant to spice up the qualifying for the State Championship and an idea leading to future class competition. Several MCA members have expressed a great deal of disfavor with this new idea; however, I would like to explain why others and I found favor with the proposal and why it will lead to better things for the MCA in general.

Throughout the history of the MCA, most events have always been open tournaments. That is, all players, regardless of rating, play together in one section. This means that the lower-rated players almost always are matched up in the early rounds against the highest-rated players. It is not until a round or two later that they are paired against other players of similar strength. However, in class play, players of similar strength are paired together in almost every round.

During my 30 years of playing in the USCF and participating in rated events, I have played in both open and class tournaments. What I have witnessed is that in class play the players seem to have more fun competing and they also make the most progress in improving their chess.

The Montana Invitational was not conceived as a means to exclude lower-rated players from participating in Montana chess. Rather, the idea was to pool the highest-rated players in Montana together in a class event to engage in highly competitive play and field a strong contender for the State Closed Championship.

This new event is the beginning of the class tournament idea in Montana chess. The idea for a satellite tourney for those rated under 1700 was proposed to the Board by an MCA member and was approved on a 3-1 vote. At this time, arrangements have been made to conduct both tournaments at a convenient location in the month of March, a month normally, in Montana, vacant of tournaments throughout the past years.

The idea of creating The Montana Class Championships as an annual event in the MCA has emerged from the efforts to create a similar event in the form of the current Montana Invitational. As a result, it is now proposed to put The Montana Class Championships on the official agenda for discussion and possible vote at the annual Business Meeting.

The Montana Invitational may or may not survive the future as an official qualifying event for the State Closed, but, at least for this year, it should prove to be quite an exciting event. The satellite event for those rated under 1700 should also provide a lot of fun for all the rising stars of Montana chess. The Board and other supportive members encourage all who may be interested to attend this inaugural event.

Keep all paths to the Closed accessible by Doug Hansen

If the Montana Invitational is to be a stepping stone to the Closed, then it must be an invitational to all MCA members, especially those members who are residents. The argument some proponents make that anyone can earn the current minimum rating requirement simply is not realistic. At any one given time, the largest part of the MCA membership will fall below 1700, thus eliminating the majority of the membership from this chance to win entry to the Closed.

While it is true that some individuals may improve their rating to above the required Invitational minimum, most of the membership will still be eliminated by the minimum rating requirement. This, also, makes no economic sense.

Why should the overwhelmingly majority of dues-paying membership not be invited? Do proponents of the Invitational think that nobody will take offense at this? Do they think that these policies of exclusion become attractive to new players with lower ratings? I believe that the effects of such policies of exclusion can only be disastrous for the MCA.

Well, maybe some new players are just looking to compete, and do not see participating in the Closed as being realistic. Such players should still not be excluded from all possible MCA championship qualifications, even if they themselves think it's a long shot at best. Further, there is no reason that the same tournament could not be held without the consideration of qualifying for the Montana Closed. More specifically, there is absolutely no reason that a person, or group of persons, could not act independently of the MCA in organizing an Invitational Tournament. There is no reason that players with a minimum rating, or who live/work within a certain region, could not be targeted as participants of a tournament which is totally independent of the MCA. There is a wide variety of ways to gather stronger players together, and such a tournament could be attractive enough to attend without making it an MCA sponsored event.

A Montana Class Championship — without the prospect of seeding to the Closed, but open to all MCA residents — would also be much more attractive and more democratic.

The Montana Invitational would be much more of an honor if all MCA Members were invited. The MCA was created by and for its members, but the current organization of the Montana Invitational serves only a small portion of the MCA membership. We should keep opportunities for honors like the State Championship equally available to all our players regardless of rating.

Dear Thad: #&@#*!&@#! And
furthermore, @#&%\$@*!!*

*I hope this clarifies my position
regarding your position.*

Email message from Alex Dawson

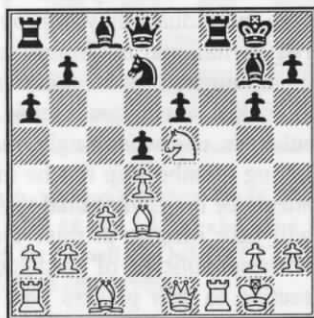
Recent Games

Games from the Thaw

Skovron, J (1872) - Long, M (1741)
Stonewall Attack [A45]
January Thaw

Michael dodges a couple of bullets in this one. Jim's failure to hit the moving target spells the difference between a share of first place and a share of second.

1.d4 Nf6 2.e3 e6 3.Bd3 c5 4.c3 Ne6 5.f4 d5 6.Nf3 g6 7.0-0 cxd4 8.exd4 Bg7 9.Qe1 a6 10.Ne5 0-0 11.Nd2 Nxe5 12.fxe5 Ne8 13.Nf3 f6 14.exf6 Nxf6 15.Ne5 Nd7



16.Nxg6!

An interesting, and apparently sound, sacrifice.

16...Rxf1+ 17.Kxf1 hxg6 18.Qxe6+ Kf8 19.Qxd5 Qh4? 20.Be4?

Jim misses the cruncher: 20.Bg5! Qh7 21.Qd6+ Kg8 22.Bxg6 and now Black must lose the queen or mate in two follows.

20...Qf6+ 21.Kg1 Nb6



22.Qg8+?

Another one gets away. 22.Qc5+! Ke8 23.Bg5 gives an irresistible attack.

22...Ke7 23.Bg5 Qxg5 24.Qxg7+ Kd6 25.Qf8+

This just forces Michael's king to safety, after which a draw is the best Jim can get. 25.Bf7, threatening to win another pawn, gives White better winning prospects.

25...Kc7 26.Qf7+ Kb8 27.Rf1 Nxc4 28.Qxc4 Qe3+ 29.Kh1 Bf5 30.Qc5 Qe2 31.Qd6+ Ka7 32.Qc5+ Kb8 33.Qd6+ Ka7 1/2-1/2

Johansson, J (2052) - Skovron, J (1872)
Caro-Kann [B10]
January Thaw

1.e4 c6 2.d3 d5 3.Nd2 e5 4.Ng3 Bd6 5.Be2

An interesting and possibly novel alternative to the more studied line 5.g3.

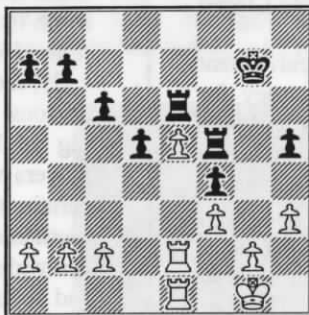
5...Bg4?! 6.0-0 Ne7



7.Nd4

Tactically promising was 7.exd5 Bxf3 8.Bxf3 cxd5 9.c4 Nbc6.

7...Bxe2 8.Nxe2 Qc7 9.Ng3 0-0 10.Qg4 f5 11.exf5 Qd7 12.Nf3 Nxf5 13.Nxf5 Qxf5 14.Qxf5 Rxf5 15.Bd2 Nd7 16.Rae1 Re8 17.Re2 h6 18.Rfe1 g5 19.h3 Nf8 20.Nh2 Ng6 21.f3 Nf4 22.Bxf4 gxf4 23.Ng4 Kg7 24.d4 h5 25.Nxe5 Bxe5 26.dxe5 Re6



With the extra pawn blockaded it will be difficult for White to make progress, but neither does Black have any prospects. 1/2-1/2

Chester, J (1353) - Spaulding, J (1283)
Colle System [D05]
January Thaw

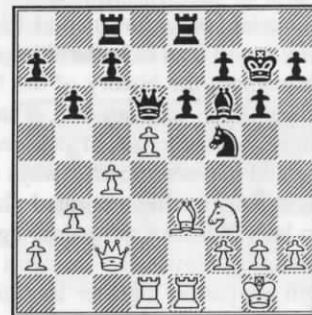
James Spaulding had a good tournament, getting two wins and two losses. Even his losses were respectable games against the

number two and three finishers, including this one against Jim Chester.

1.d4 Nf6 2.Nf3 e6 3.e3 d5 4.Bd3 Nc6 5.0-0 Be7 6.Nbd2 0-0 7.c3 b6 8.Qc2 Bb7 9.Ng5 g6

More flexible would be 9...h6.

10.Ndf3 Re8 11.e4 dxe4 12.Nxe4 Nxe4 13.Bxe4 Bf6 14.Rd1 Na5 15.Bxb7 Nxb7 16.Bh6 Qd5 17.Re1 Nd6 18.b3 Nf5 19.Be3 Kg7 20.Rad1 Rac8 21.c4 Qd6 22.d5



22...Nxe3 23.Rxe3 Qc5 24.dxe6 Rxe6 25.Rxe6 fxe6 26.Rd7+

White seizes the seventh, and with it, control of the game.

26...Kg8 27.Qe4 Qf5 28.Qxf5 exf5 29.Kf1 Be3 30.g3 h6 31.Nh4 Re8 32.Nxg6 Re1+ 33.Kg2 Be5 34.Nxe5 Rxe5 35.Rxc7 Ra5 36.a4 a6 37.Rc6 b5 38.cxb5 axb5 39.Re5 Kf7 40.Rxb5 Rxb5 41.axb5 Ke6 42.f4 1-0

Warner, N (1404) - Preston, C (1308)
Queen's Gambit Spurned [D35]
January Thaw

1.d4 d5 2.c4 e6 3.cxd5 exd5 4.Nc3 Nf6 5.Bf4 Bb4 6.Rc1 0-0 7.a3 Bd6 8.Bxd6 Qxd6?

In this case doubling the pawns with 8...cxb would have been preferable, owing to the dangerous open c-file.

9.Nb5 Qb6 10.Nxc7 Qa5+ 11.Qd2 Qxd2+ 12.Kxd2 Ne4+ 13.Ke1 Nc6 14.Nxa8 Nxd4

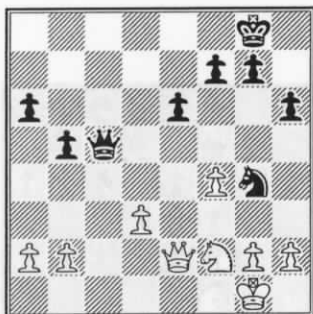


Those knights look peskier than they really are.

15.e3 Nb3 16.Rd1 Rd8 17.Nc7 Be6 18. Nxe6 fxe6 19.Bd3 Nec5 20.Nf3 Re8 21.h4 e5 22.Bb5 Rf8 23.Nxe5 Ne4 24.Rxd5 Nxf2 25.Rf1 1-0

Spaulding, J (1283) - Furdell, W (1307)
Sicilian [B62]
January Thaw

1.e4 c5 2.Nf3 Nc6 3.d4 exd4 4.Nxd4 d6 5.Nc3 e6 6.Be3 Nf6 7.Bg5 Be7 8.Be2 0-0 9.0-0 a6 10.Nf3 h6 11.Bh4 Nh7 12.Bxe7 Qxe7 13.Qd2 b5 14.Nd4 Bb7 15.f4 Nxd4 16.Qxd4 Nf6 17.Rad1 Rfd8 18.Bf3 Rd7 19. e5 dxe5 20.Qxe5 Bxf3 21.Rxf3 Rxd1+ 22. Nxd1 Rd8 23.Qe2 Qc5+ 24.Nf2 Ng4 25. Rd3? Rxd3 26.cxd3



26...Qd4?

This simple blunder may seem bad enough, but it's a lot better than the blunder Bill feared he had made when trying to reconstruct the game at club the next night: 26...QxN+ 27.QxN?? Qxb2??? After 26... NxN 27.QxN Qc1!, Black wins at least a pawn.

27.Qxg4 Qxb2 28.Nd1 Qd4+ 29.Nf2 Qa1+ 30.Qd1 Qxa2 31.Ne4 Qd5 32.Qf3 Qd4+ 33.Nf2 Qa1+ 34.Nd1 Qd4+ 35.Qe3 Qxe3+ 36.Nxe3 a5 37.Kf2 a4 38.Nc2 f6 39. Ke3 Kf7 40.Kd2 g5 41.fxg5 hxg5 42.Kc3 And White held on for the win.

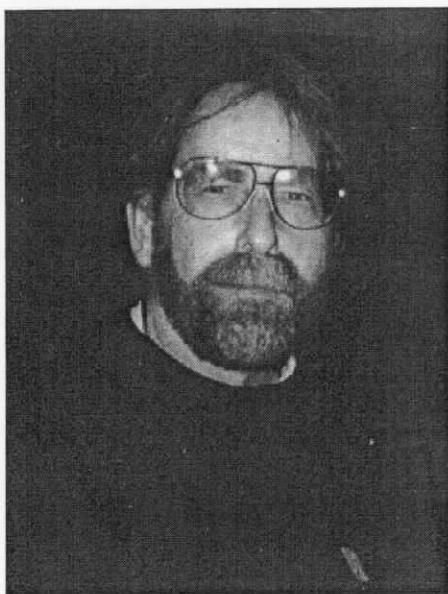
Richards, P (1283) - Dyer, T (unr.)
Center-Counter Reversed [C22]
January Thaw

Thomas Dyer, new to tournament play but not without some chess savvy, won two games in the Thaw. This one slipped away from him.

1.e4 e5 2.d4 exd4 3.Qxd4 Nc6 4.Qd1 d6 5.c4 Nf6 6.Nc3 Ne5 7.f4 Nc6 8.f5?!

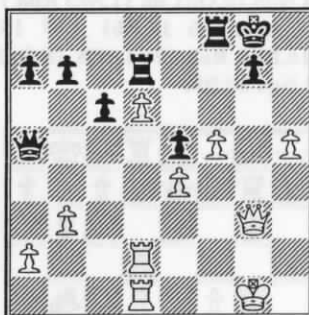
This over extends and gives the knight a nice hole at e5.

8...Ne5 9.Nf3 Nfd7 10.Bf4 Nxf3+ 11. Qxf3 Be7 12.Be2 Bf6 13.0-0 0-0 14.Rab1 Ne5 15.Qe3 c6 16.Rbd1 Qc7 17.g4 h6 18. g5 Bxg5 19.Bxg5 hxg5 20.Qxg5 f6 21.Qg3 Bd7 22.h4 Rf7 23.b3 Kf8 24.Bh5 Re7 25. Ne2 Be8 26.Bxe8 Rxe8 27.Nf4 Kg8 28.



James Chester, tied for second place

Rfe1 Qd7 29.Ng6 Rf7 30.Nxe5 fxe5 31.Rd2 Qc7 32.Red1 Rd8 33.c5 Rfd7 34.cxd6 Qa5 35.h5 Rf8



36.Qe3

Deflecting the black queen would give White excellent play: 36.b4! Qxb4 37.Qxe5

36...Qb6 37.Qxb6 axb6 38.a4

Getting the king in play to defend the forward pawns was in order.

38...Rf6 39.b4 Rh6 40.Rh2?

Better to give up the h-pawn for lost.

40...Rhxd6 41.Rxd6 Rxd6 42.Rg2 Kh7 43.Rg6 Rd4 44.f6 gxf6 45.Rxf6 Rxb4 46. Rf7+ Kh6 47.Rxb7 Kxh5 48.Kf2 c5 49.a5 bxa5 50.Rxb4 axb4 51.Ke2 Kg4 52.Kd3 Kf4 0-1

Schuyler, M (unr.) - Barnes, A (1256)
Veresov's Opening [D00]
January Thaw

Although Mike Shuyler 2.5 score was impressive in the Thaw, he was to do even better in the Midwinter Open a few weeks later. Here he falls to the U1500 division co-winner, Aldin Barnes.

1.d4 d5 2.Nc3 Nf6 3.g3 e6 4.Bg2 c5 5. Bg5 Nbd7 6.e3 c4 7.Nge2 h6 8.Bxf6 Nxf6 9.Nf4 Be7 10.0-0 b6 11.a3 Bb7 12.Nfe2 Ne4 13.Nxe4 dxe4 14.Nc3 f5 15.f4 Bf6 16. Qh5+ Kf8 17.Rad1 Qd7 18.g4 g5



19.gxf5

With Black's king uncastled the moment was ripe for a surprising tactical blow: 19. Nxe4 Bxe4 20.Bxe4 and if Black retakes his position gets busted with the opening of the f-file.

19...exf5 20.Rd2 Rd8 21.Qg6 Qe6 22. Bh3 [22.fxf5!] 22...g4 23.Bg2 Bc6 24. Rfd1? Be8! 25.d5 Bxg6? [25...Rxd5!] 26. dxe6 Rxd2 27.Rxd2 Ke7 28.Rd7+ Ke8



29.Rxa7

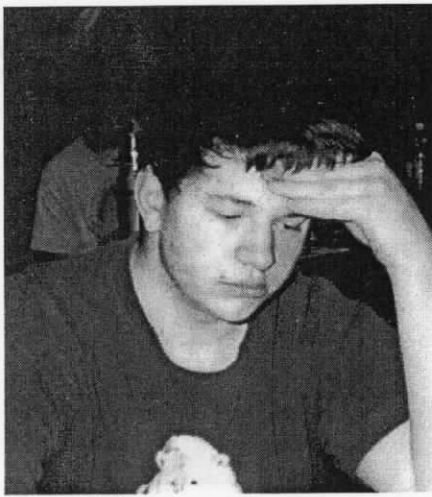
A strong and forcing alternative here was 29.Nd5 Bxb2 30.Nc7+ Kf8 31.e7+ Kg8 32.Bf1 etc. Now Black gets to equalize.

29...Rh7 30.Rxb7 Bxb7 31.Na4 b5 32. Nc3 Bxc3 33.bxc3 Ke7 34.h3 h5 35.hxg4 hxg4 36.Kf1 Kxe6 37.Ke1 Kd6 38.Kd1 Kc6 39.Kc1 Kb6 40.Kb2 Ka5 41.Bh1 Bg6 42.Bg2 Bh5 43.Bh1 g3 44.Bg2 Ka4 45.Bh3 Bg4 46.Bg2 Be2 47.Bh3 Bf3 48.Ka2 Ka5 49.Kb2 g2 50.Bxg2 Bxg2 51.Ka2 Kb6 52. Kb2 Kc6 53.Kc1 Bf3 54.Kd2 Bh5 55.Kc1 Be8 56.Kd2 Kb6 57.Ke1 Kc6 58.Kb2 Kd6 59.Kc1 Ke6 60.Kd2 Kf6

And the Black king's end-run eventually paid off. 0-1

Hansen, D (1714) - Long, M (1741)
French Defense [B21]
January Thaw

1.e4 e6 2.f4 c5 3.Nf3 Nc6 4.c3 d5 5.e5 a6 6.Be2 d4 7.d3 Nge7 8.Nbd2 Nf5 9.Nf1



Aldin Barnes, Co-winner, U1500 Division

Be7 10.g4 Nh4 11.Ng3 Ng2+ 12.Kf2 Nh4
13.g5 Nxf3 14.Bxf3 f6?!



15.Bh5+

More positionally crippling was 15.exf6
gxf6 16.Bxc6+

15...Kf8 16.Qf3 f5 17.Qe2 g6 18.Bf3 h6
19.h4 hxg5 20.hxg5 Rxh1 21.Bxh1 Kf7 22.
Bf3 Qh8 23.Bd2 Qh2+? 24.Bg2 Qh7 25.
Rh1 Qg7 26.Bf3 Bd7

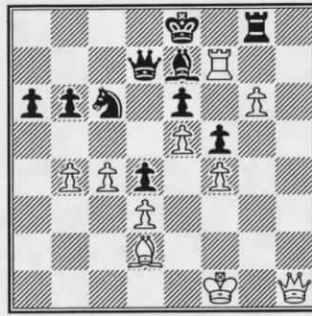


27.Nh5?!

This seems a bit impatient. In time
White's spatial advantage probably would
have born fruit.

27...gxh5 28.Bxh5+ Kf8 29.Kf1 Nd8
30.Bf3 Bc6 31.Rh5 Ke8 32.Bxc6+ Nxc6 33.
Qg2 Kd7 34.Qh2 Rg8 35.Rh7 Qf8 36.c4

Qe8 37.a3 b6 38.b4 cxb4 39.axb4 Kd8 40.
Qh1 Qd7 41.Rf7 Ke8 42.g6



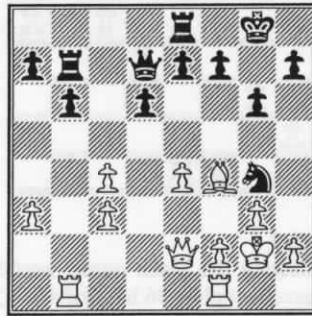
42...Kd8? [42...Rxc6] 43.Qh7?

White, running out of time, misses 43.
b5!, allowing the queen to use the long di-
agonal to penetrate.

43...Qe8 44.b5 axb5 45.cxb5 Rh8
And White's flag fell. 0-1

Drake,M (1268) - Rasmussen,S (unr.)
Benoni Defense [E60]
January Thaw

1.d4 Nf6 2.c4 c5 3.Nf3 g6 4.g3 Bg7 5.
Bg2 0-0 6.0-0 cxd4 7.Nxd4 Nc6 8.a3 Nxd4
9.Qxd4 Nh5 10.Qd1 d6 11.Nc3 Rb8 12.Be3
Bxc3 13.bxc3 b6 14.Rb1 Bb7 15.Bxb7
Rxb7 16.Bh6 Re8 17.e4 Nf6 18.Qe2 Qd7
19.Kg2 Ng4 20.Bf4



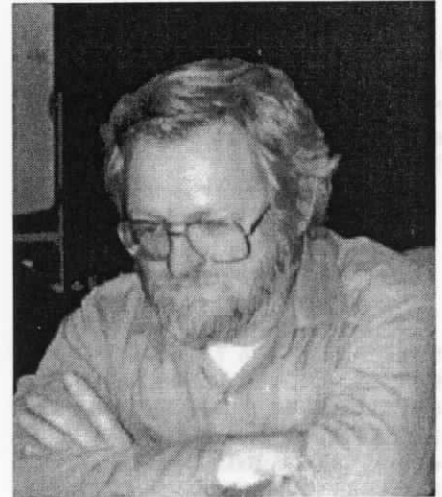
20...Qa4?

Too bad. Up to here Stephen has engi-
neered a solid position with no weaknesses
and several likely targets in Mel's camp.

21.Qxg4 Qxc4 22.Bh6 a5 23.Qf3 Rd7
24.Rfd1 b5 25.e5 Qe6 26.Rxb5 dxe5 27.
Rxa5 Rxd1 28.Qxd1 Qc6+ 29.Kh3 Qc8+
30.Kh4 Qc4+ 31.Kh3 Qxc3 32.Qd5 Qc8+
33.Kg2 Rd8 34.Rc5 Qd7? 35.Qxd7 Rxd7
36.Rc8+ Rd8 37.Rxd8# 1-0

Long,M (1796) - Johansson,J (2052)
The Rat [A41]
January Thaw

1.d4 d6 2.c4 Nd7 3.g3 e5 4.e3 Ngf6 5.
Bg2 Be7 6.Ne2 0-0 7.0-0 Re8 8.Nbc3 c6 9.
a3 Qc7 10.b3 Nf8 11.Bb2 a6 12.d5 c5 13.h3
g6 14.g4 h6 15.f4 exf4



Thomas Dyer



16.Nxf4

Capturing this way creates a backward
pawn on e3 and leaves both e4 and e5 vul-
nerable to Black's knights as the game starts
to open up.

16...N8h7 17.Qc2 Bf8 18.Rae1 Qe7 19.
e4 Nd7 20.Nd3 Bg7 21.Nd1 Ne5 22.Nxe5
Bxe5 23.Bxe5 Qxe5 24.Qf2 Re7 25.Qf4
Kg7 26.Qxe5+ Rxe5 27.Nb2 f6 28.Nd3 Re7
29.Rf2 Bd7 30.Ref1 Rae8 31.Kh2 b5 32.
Nb2 Rb8 33.Nd1 Be8 34.Ne3 Reb7 35.Re1
Re7 36.cxb5 Bxb5 37.Nc4 Bxc4 38.bxc4
Rb3

Jan has achieved the break-through he's
been working towards for many moves.

39.Rf3 Rxf3 40.Bxf3 Ng5 41.Bg2 Rb7
42.Re3 Rb2 43.Kg3 Nf7 44.Rc3 a5 45.h4
45.Bf3 would make Black work harder.
45...a4 46.Bf3 Rb3 47.Rxb3 axb3 48.
Bd1 b2 49.Bc2 Ne5 50.a4 Nxc4 51.Kf3
Nd2+ 0-1

Games from the Midwinter Open

Pearson,C (unr.) - Gray,D (1125)
Center Game [C22]
Midwinter Open

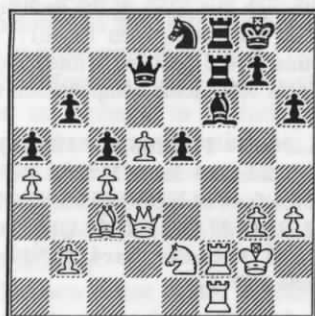
In this battle of newcomers, Devin Gray finds an unusual checkmate.

1.e4 e5 2.d4 exd4 3.Qxd4 Nc6 4.Qd2 Nf6 5.Nc3 Bb4 6.a3 Ba5 7.b4 Bb6 8.Nf3 d6 9.g3 Bg4 10.Nd5 Bxf3 11.Rg1 Nxe4 12.Qf4? Bxf2# 0-1



Skovron,J (1851) - Johansson,J (2023)
English [A00]
Midwinter Open

1.g3 d6 2.Bg2 e5 3.c4 f5 4.d3 Nf6 5.Nc3 Be7 6.e3 0-0 7.Nge2 c6 8.0-0 Na6 9.d4 Nc7 10.Qb3 Kh8 11.Bd2 Qe8 12.d5 c5 13.Qc2 Rb8 14.a4 a5 15.f4 b6 16.e4 Nxe4 17.Nxe4 fxe4 18.Bxe4 Qh5 19.Rf2 Bg4 20.Re1 Rf7 21.Qd3 Rbf8 22.Bf3 Ne8 23.Bxg4 Qxg4 24.Ref1 Bf6 25.Bc3 Kg8 26.Kg2 h6 27.h3 Qd7 28.fxe5 dxe5



29.Qf5?

After 29.b3, White is still holding most of the cards.

29...Qxa4

And Black went on to clean up on the queenside.0-1

Scarff,S (1612) - Long,M (1796)
Blackmar-Diemer Gambit Declined [D00]
Midwinter Open

The Blackmar-Diemer Gambit ("BDG" to its friends) gives White a scary attack sometimes. Trouble is, declining the gambit can be just as scary.

1.d4 Nf6 2.f3 d5 3.e4 dxe4 4.Nc3

(Go ahead. Take that other pawn. I dare you!)

4...e6 5.Bc4

(I really mean it. I'm offering you the pawn!)

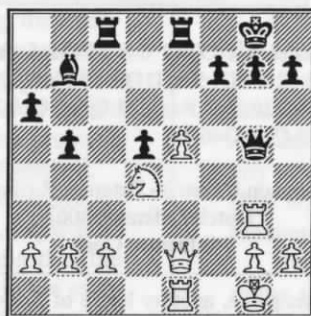
5...a6 6.Bg5

(Pretty please take the pawn?)

6...Be7 7.fxe4

(Ingrate!)

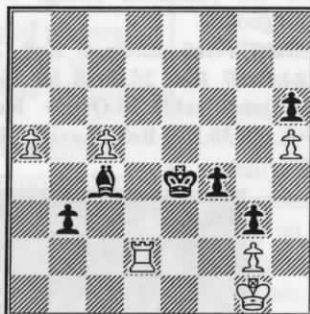
7...b5 8.Bd3 Bb7 9.Qe2 0-0 10.Nf3 Nbd7 11.0-0 c5 12.e5 Nd5 13.Bxe7 Qxe7 14.Be4 cxd4 15.Nxd5 exd5 16.Bd3 Nc5 17.Rad1 Nxd3 18.Rxd3 Rfe8 19.Re1 Rac8 20.Nxd4 Qg5? 21.Rg3!



21...Qe7 22.Nf5

Even better is 22.Rxg7+ with the threat of a fork.

22...Qc5+ 23.Kh1 g6 24.Nd6 Qxd6 25.exd6 Rxe2 26.Rxe2 Rd8 27.Re7 Bc8 28.Rc7 Be6 29.Rc6 a5 30.Rgc3 d4 31.R3c5 Bd7 32.Rb6 Re8 33.h3 Kg7 34.Rb7 Rd8 35.Rcc7 Be6 36.d7 b4 37.Kg1 a4 38.Rxb4 Rxd7 39.Rxd7 Bxd7 40.Rxd4 Bf5 41.c4 Be6 42.a3 Kf6 43.c5 Ke5 44.Rd2 Bd5 45.Kf2 f5 46.Kg3 g5 47.h4 g4 48.h5 h6 49.Kf2 f4 50.b4 axb3 51.a4 Ke4 52.a5 g3+ 53.Kg1 Bc4



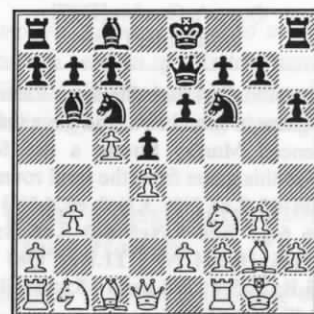
Scoresheets end here. White can still go wrong (e.g. 54.Rb2? Kd3!, winning the ending thanks to the more advanced b-pawn). But Steve threaded his way to the win somehow, probably with 54.c6, and queening. 1-0

Skovron,J (1851) - Scarff,S (1612)
English [A00]
Midwinter Open

1.g3 e6 2.Bg2 d5 3.Nf3 Nc6 4.0-0 Bc5 5.c4 Nf6 6.d3 h6 7.b3 Qe7?

This cuts off the bishop's escape.

8.d4 Bb6 9.c5



9...Bxc5

There is no saving the bishop. After 9...Ba5 10.a3 renews the threat.

10.dxc5 Qxc5 11.Ba3 Qa5 12.Qd2 Qa6 13.Bb2 Nd7 14.Bxg7 Rg8 15.Bb2 Nc5 16.Nd4 Bd7 17.Nxc6 Bxc6 18.Nc3 0-0-0 19.Qe3?



19...Rg6?

19...d4 wins back the piece easily enough. The text move merely drops another one.

20.Qxc5 d4 21.Ne4 Bxe4 22.Bxe4 Rg5 23.Qc2 f5 24.Bd3 Qd6 25.Rac1 c6 26.f4 Rg4 27.Qc5 Qd7 28.Qxa7 h5 29.Rxc6+ bxc6 30.Ba6+ 1-0



Curtis Preston, best upset to date

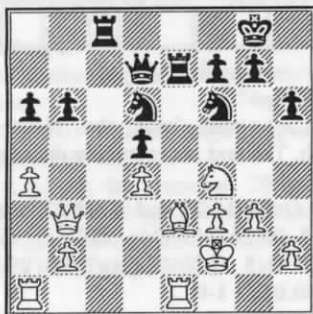
Rasmussen,S (1059) - Strong,M (1433)
Queen's Gambit [D37]
Midwinter Open

Provisionally-rated Stephen Rasmussen won a game in round two, and gave the more experienced Murray Strong a run for his money in this game from the final round.

1.d4 d5 2.c4 Nf6 3.Nc3 e6 4.Nf3 h6 5.Bf4 a6 6.g3 Bd6 7.Ne5 0-0 8.c5 Bxe5 9.Bxe5 Nc6 10.Bf4 Nh5 11.Be1 Qe7 12.e3 Nf6 13.Bg2 e5 14.0-0 exd4 15.exd4 Be6 16.Re1 Qd7 17.Ne2 Bh3



18.Bxh3 Qxh3 19.Nf4 Qg4? 20.f3 Qd7 21.a3 Rfe8 22.Be3 b6 23.cxb6 cxb6 24.Kg2 Re7 25.Qc2 Rae8 26.Qc3 Na7 27.Qb3 Nb5 28.Kf2 Rc8 29.a4 Nd6



Black's pieces are a little better coordinated, but it's still anyone's game. In the time scramble that followed, Murray converted this slim advantage to a win. 0-1

Strong,M (1433) - Schuyler,M (1045)
[A46]
Midwinter Open

The big surprise of the Midwinter Open was the performance of young Mike Schuyler, who, after a first-round loss to Michael Long, won all three of his remaining games to finish in a tie with Jim Skovron for 2nd-3rd place. Apparently that 1045 provisional rating is a touch on the low side.

1.d4 Nf6 2.Nf3 e6 3.Bf4 Nc6 4.Nc3 b6 5.h3 Bb7 6.e3 Bb4 7.Bd3 Bxc3+ 8.bxc3 d6 9.0-0 h6 10.a3 Qe7 11.Qe2 e5 12.Ba6 Bxa6 13.Qxa6



13...exf4 14.Qb7 0-0 15.Qxc6 fxe3 16.Rae1? e2 17.Qb5 exf1Q+ 18.Kxf1 Qd8 19.Nh4 Re8 20.Re2 Rxe2 21.Qxe2 Qe8 22.Qf3 Rb8 23.Qg3 Qe6 0-1

Pearson,C (unr.) - Petersen,R (unr.)
Dutch Defense [B06]
Midwinter Open

This game, another battle of first-timers, ends in a win for Colter, but at several points it could have gone the other way.

1.e4 g6 2.d4 f5 3.Nc3 c6 4.Nf3 d5 5.exd5 cxd5 6.Ne5 e6 7.f4 Bh6 8.h4 g5 9.g3?

White misses an instant knock-out: Mate in 3 beginning with 9.Qh5.

9...Ne7 10.fxc5 Bg7 11.b4 Nbc6 12.b5? Nxe5 13.dxe5 Bxe5 14.a3? d4?

Now it's Black's turn to miss the winner: 14...BxN+ snags a whole rook.

15.Qe2 Qc7

Better was 15...Bxg3+! 16.Kd1 dxc3+.

16.Bf4 Ng6 17.Na2 Bd7 18.c3 a6 19.cxd4 Rc8 20.a4 Qd8?

Now the pendulum swings back to White for good.

21.Bxe5 Nxe5 22.Qxe5 Rg8 23.Bg2 Rxg5 24.Bxb7 Ra8 25.Bxa8 h6 26.Qh8+ Ke7 27.Qxh6 axb5 28.Qxg5+ Ke8 29.Qxd8+ Kxd8 30.Nc3 Be8 31.axb5 1-0



Michael Long

Long,M - Johansson,J (1796)
The Rat [A41]
Midwinter Open

1.d4 d6 2.c4 Nd7 3.Nc3 e5 4.d5

In their January Thaw matchup Michael tried 4.e3 in this position and wound up being weak on the light squares.

4...f5 5.g3 Ngf6 6.Bg2 g6 7.b4 a5 8.b5

This leads to some nightmarish holes in White's camp. 8.Qa4 might be worth a try, since 8...b6 (with the idea of 9...Bb7) could be met by 9.Qc6.

8...Bg7 9.a4 0-0 10.e3 Nc5 11.Bb2 e4!

Now there is no stopping the knights from ganging up on d3.

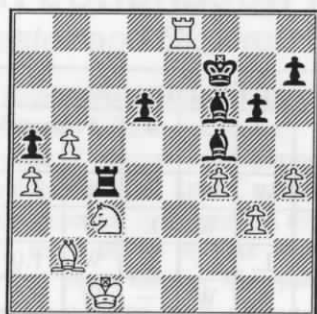
12.Bf1 Ng4 13.Qc2 Ne5 14.0-0-0 Ned3+ 15.Bxd3 exd3



16.Rxd3

Although this gives up the exchange, it's a heck of a lot better than 16.Qb1?? Nb3#. From this closed position White's more active pieces offer some compensation for the exchange.

16...Nxd3+ 17.Qxd3 Bd7 18.h4 Qe7 19.Nge2 c6 20.dxc6 bxc6 21.Rd1 Be5 22.f4 Bg7 23.e4 fxe4 24.Nxe4 Bf5 25.N2c3? Rfe8 26.Re1 Rad8 27.Qe3 Qf7 28.Qb6 Qxc4 29.Qxc6 Rc8 30.Qxc4+ Rxc4 31.Nf6+ Bxf6 32.Rxe8+ Kf7 0-1



33.Ra8? [33.Re3] 33...Bxc3 34.Ra7+ Ke6
35.Bxc3 Rxc3+ 36.Kb2 Rc2+ 0-1

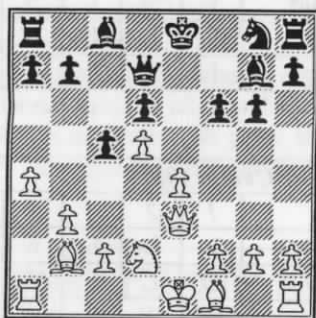
Shuyler, M (1045) - Pearson, C (unr.)
Scotch Game. [C44]
Midwinter Open

In spite of still having a lot to learn about chess, Colter Pearson did win a game in his first tournament, which is no easy task.

1.e4 e5 2.Nf3 Nc6 3.d4 f6

Beginners are advised to leave that king bishop pawn alone until the king is safe.

4.d5 Nd4 [4...Nce7] 5.Nxd4 exd4 6.Qxd4 c5 7.Qe3 d6 8.b3 g6 9.Bb2 Bg7 10.Nd2 Qd7 11.a4



11...f5?

Necessary first was 11...a6 to prevent the skewer.

12.Bb5 Bd4 13.Bxd7+ Kxd7 14.Qg3 Nf6 15.Bxd4 cxd4 16.exf5 Re8+ 17.Kd1 Kd8 18.Qh4 Rf8 19.fxg6 Bg4+ 20.f3 Bf5 21.gxh7 Rc8 22.h8Q Rxh8 23.Qxh8+

Black could resign any time now.

23...Kc7 24.Qxc8+ Kxc8 25.Ne4 Nxd5 26.h4 Ne7 27.Nxd6+ Kd8 28.Nxf5 Kd7 29.h5 a5 30.h6 b5 31.axb5 Ke6 32.h7 Kxf5 33.h8Q a4 34.bxa4 d3 35.Qd8 1-0

Other Games

Hansen, D (1726) - Anderson, H (1684)
Danish Gambit [C21]
Northwest Team Tournament

1.e4 e5 2.d4 exd4 3.c3 dxc3 4.Nxc3

Another sharp line is the original Danish Gambit, sacking a second pawn with 4.Bc4.

This is always exciting, but generally unsound against an experienced player.

4...Nc6 5.Bc4 Bc5



6.Qh5

More accurate is the immediate 6.Bxf7+ with a follow-up similar to the next few moves. Now White loses even more time.

6...Qe7 7.Bxf7+ Qxf7 8.Qxc5 d6 9.Qe3 Nf6 10.Nge2 Nb4 11.Qd2 0-0 12.0-0 Ng4 13.Ng3 h5 14.h3 h4 15.Nh1 Ne5 16.Qg5 Bxh3!

Now if 17.gxB Nf3+ follows, winning the queen, so...

17.f4 Bd7

17...Be6 is a better retreat, ganging up on a2.

18.Qxh4 Ned3 19.Nd5

A desperation ploy that saves Doug's bacon. Hans misses the immediate threat.

19...c6? 20.Ne7+ 1-0

Johansson wins again

Shuyler impressive in Bozeman

Jan Johansson, fresh from victory at the January Thaw in Helena, won all four of his games to take first place at the Midwinter Open, held in Bozeman on February 3rd. In most of his games Johansson cruised to a win, although Jim Skovron made it close in their second round game until carelessly dropping a pawn.

Skovron ended up in a tie for 2nd-3rd place with the surprise of the tournament, young Mike Schuyler.

Schuyler, a junior member from Livingston playing in only his third tournament, won three games in a row. His only loss came in round one to the man who introduced him to the MCA last year, Michael Long.

The game/60 tournament, drew ten players, mostly from the Bozeman area. It was a promising first event for the newly reformed Bozeman club. Steve Scarff, the tournament organizer, got out the word and registered three new members for the MCA. He also got in a couple of wins for himself along the way.

Nowak earns share of first at Collyer Memorial

—a report by Bill McBroom

The 2001 Dave Collyer Memorial Open was preceded by a lecture and simultaneous exhibition by master Jon Donaldson on Friday evening (and he played in the tournament itself). Like last year, our friend Gary Younker did a splendid job of putting on the event.

The field was a strong one. Of the total of 60 players, there were four masters and five experts. Eight Montana players joined Greg Nowak, who as a high expert began on board 5. He finished well, tying with master Donaldson, and experts Collyer (Dave's son) and Rodriguez — all with 4.5 points and \$150 each in prize money. The other Montana finishers were Romie Carpenter, Mike Jensen, and Bill McBroom (3 points each); Doug Hansen and Sherwood Moore (2.5 points); Dan McCourt and Scot Young (2 points); and Bob McKean (1 point).

The Montana first-timers became believers. They learned what Romie and Bill have been saying for years: Spokane players are tough and the restaurants are worth a 3rd round bye.

There were a half dozen or so players under 12 years of age. Michael Cambareri, at 1383, upset a player rated 478 points higher. This sort of thing produced the following comments: "Spokane has the strongest 1200 rated players in the world," "Next year there should be a special under 12 section (years of age, not 1200 rating)," "Doesn't Spokane have a curfew? Shouldn't these kids be home in bed?," "Who said we should encourage junior chess?," and "Don't get discouraged and quit when you lose to a kid. You never know when you will play your own 'Evergreen Game'."

Tournament Tables

Helena's January Thaw (1/20,21/01)

#	Name	Rtng	Rd 1	Rd 2	Rd 3	Rd 4	Rd 5	Tot
1	Jan Johansson	2052	W15	W3	W4	D2	W8	4.5
2	James J Skovron	1872	W9	W6	W11	D1	D4	4.0
3	James M Chester	1353	W16	L1	W7	W11	W9	4.0
4	Michael J Long	1741	W13	W12	L1	W8	D2	3.5
5	Robert A Mc Kean	1741	W7	L11	L8	W16	W12	3.0
6	Nick D Warner	1404	W14	L2	L12	W17	W11	3.0
7	Aldin M Barnes	1256	L5	W17	L3	W10	W14	3.0
8	Douglas J Hansen	1714	H---	W15	W5	L4	L1	2.5
9	J B Spaulding	1283	L2	W14	H---	W12	L3	2.5
10	Mike Schuyler	unr.	L12	W13	D16	L7	W15	2.5
11	Curtis C Preston	1308	W17	W5	L2	L3	L6	2.0
12	William J Furdell	1307	W10	L4	W6	L9	L5	2.0
13	Melvin P Drake	1268	L4	L10	W17	L14	W16	2.0
14	Thomas Dyer	unr.	L6	L9	W15	W13	L7	2.0
15	Paul Richards	1283	L1	L8	L14	B---	L10	1.0
16	Jason B Ames	896	L3	H---	D10	L5	L13	1.0
17	S. Rasmussen	unr.	L11	L7	L13	L6	B---	1.0

Flathead Championship (10/7/00)

#	Name	Rtng	Rd 1	Rd 2	Rd 3	Rd 4	Rd 5	Tot
1	Greg Nowak	2139	W12	W6	W2	W4	W3	5.0
2	Eric Gilbertsen	1461	W11	W3	L1	W6	W4	4.0
3	Peter Skarstedt	1280	W10	L2	W14	W8	L1	3.0
4	Scott Young	1250	W13	W7	W12	L1	L2	3.0
5	Woody Crobar	unr.	L6	L14	W10	W13	W8	3.0
6	Don Robinson	unr.	W5	L1	W11	L2	W9	3.0
7	Tom Dyer	unr.	W9	L4	L8	W14	W10	3.0
8	Miles O Kinney	1200	W14	L10	W7	L3	L5	2.0
9	Doug Baty	unr.	L7	L12	W13	W11	L6	2.0
10	Steve Young	unr.	L3	W8	L5	W12	L7	2.0
11	Mark Rupp	unr.	L2	W13	L6	L9	W14	2.0
12	Dale Gross	1480	L1	W9	L4	L10	L13	1.0
13	Adam Eraky	unr.	L4	L11	L9	L5	W12	1.0
14	Adam Dykstra	unr.	L8	W5	L3	L7	L11	1.0

Midwinter Open (2/3/01)

#	Name	Rtng	Rd 1	Rd 2	Rd 3	Rd 4	Tot
1	Jan Johansson	2023	W7	W2	W5	W4	4.0
2	James J Skovron	1851	W8	L1	W7	W5	3.0
3	Mike Shuyler	1045	L4	W9	W6	W10	3.0
4	Michael J Long	1796	W3	L5	W8	L1	2.0
5	Steven R Scarff	1612	W9	W4	L1	L2	2.0
6	Murray Strong	1433	W10	L7	L3	W8	2.0
7	Devin Gray	1125	L1	W6	L2	W9	2.0
8	Stephen Rasmussen	1059	L2	W10	L4	L6	1.0
9	Colter Pearson	unr.	L5	L3	W10	L7	1.0
10	Robert Petersen	unr.	L6	L8	L9	L3	0.0

6th Northwest Team Tourney (12/2/00)

#	Team Name	1	2	3	4	5	match pnts	game pnts
1	Seismic Force	—	W	W	D	W	3.5	11.5
2	Nine-Inch Nails	L	—	W	L	W	2.0	7.0
3	Rage Against the Center	L	L	—	L	W	1.0	6.5
4	Northern Knights	D	W	W	—	W	3.5	14.0
5	Critical Mass	L	L	L	L	—	0.0	1.0

Northwest Team Tourney team-by-team results

Seismic Force (#1)

#	Name	2	3	4	5	Tot
1	Greg Nowak	W	W	W	W	4.0
2	Paul Mitchell	W	D	L	L	1.5
3	Eric Gilbertsen	W	L	W	W	3.0
4	Mike Joyce	W	W	L	W	3.0

Nine-Inch Nails (#2)

#	Name	1	3	4	5	Tot
1	Hans Anderson	L	W	L	L	2.0
2	Dan McCourt	L	W	L	W	2.0
3	Ken Schultz	L	L	L	W	1.0
4	Scott Young	L	W	L	W	2.0

Rage Against the Center (#3)

#	Name	1	2	4	5	Tot
1	Ted Catten	L	L	L	W	1.0
2	Bob Leader	D	L	L	W	1.5
3	Dale Gross	W	W	L	W	3.0
4	Woody Crobar	L	L	L	W	1.0

Northern Knights (#4)

#	Name	1	2	3	5	Tot
1	Doug Hansen	L	W	W	W	3.0
2	Tom Dyer	W	W	W	W	4.0
3	Don Robinson	L	W	W	W	3.0
4	Miles Kinney	W	W	W	W	4.0

Critical Mass (#5)

#	Name	1	2	3	4	Tot
1	<Empty>	L	L	L	L	0.0
2	Mike Carlin	W	F	F	F	1.0
3	Tyler Kimbal	L	L	L	L	0.0
4	Kevin Mittman	L	L	L	L	0.0

Upcoming Events

GP = Grand Prix eligible. USCF and MCA membership required unless otherwise noted. (Other states OK).
Juniors half price at MCA events unless otherwise noted.

March 10 — Northern Rockies Championship

Format: 5 rd Swiss, mixed time controls. **Site:** Clandestine Chess club, 125 W. Main, Missoula. **EF:** \$10 in advance, \$15 at site, \$3 less for juniors. **Prizes:** 1st-\$20, 2nd-\$15, 3rd-\$10, Junior-8\$ (based on 3 entries). **Registration:** 10:30-10:45. **Rnds:** 11, 12, 1, 2:10, 3:15. **Contact:** Greg Nowak, Box 8572, Missoula, MT 59807.

March 24-25 — Montana Invitational

Format: Open only to resident MCA members rated 1700 and higher. 4 rd Swiss, Game/2. **Site:** Room 203, Rankin Hall, Univ. of MT, Missoula. **EF:** \$25 if rec'd by 3/20, \$30 after that. **Prizes:** 1st place—50% of the take; 2nd—30%; 3rd—20%. The winner also qualifies for the Closed Championship. **Registration:** 10:00-10:45. **Rnds:** 11, 4 / 10, 3. **Contact:** Greg Nowak, Box 8572, Missoula, MT 59807, or call (406) 443-7903.

March 24-25 — Invitational Satellite—"Spring Showdown"

Format: Open only to resident MCA members rated below 1700. 4 rd Swiss, Game/2. **Site:** Room 203, Rankin Hall, Univ. of MT, Missoula. **EF:** \$20 if rec'd by 3.20, \$25 after that. **Prizes:** 1st place—50% of the take; 2nd—30%; 3rd—20%. Additional prizes: Best under 1400— \$25.00, Best UR or under 1200 —\$25.00. **Registration:** 10:00-10:45. **Rnds:** 11:15, 4:15 / 10:15, 3:15. **Contact:** Greg Nowak, Box 8572, Missoula, MT 59807, or call Alex Dawson at (406) 443-7903.

April 7-8 — Crocus Open

Format: GP. 4 rd Swiss, Game/2 hrs. **Site:** Room 203, Rankin Hall, Univ. of MT, Missoula. **EF:** \$20 by 4/5, \$25 after that. **Prizes:** 1st - \$100, 2nd - \$75, 3rd - \$50. Class B - \$40, Class C - \$30, Class D and lower - \$20. **Registration:** 9:00-9:30 **Rnds:** 10, 2:30 / 9, 1:30. **Entries to:** William H. McBroom, 2321 Raymond Ave, Missoula, MT 59802. **Other:** No phone entries.

May 5 — Probable Team Tournament (*Watch for the flyers*)

Details to be announced. **Site:** Missoula **Contact:** Greg Nowak, Box 8572, Missoula, MT 59807.

June 3-4 — The 2001 Montana State Open in Helena

Format: GP. 5 round Swiss, G/2. **Site:** Lewis & Clark Library, 120 S. Last Chance Gulch. **EF:** \$20 by May 29, \$25 after that, no exceptions. **Prizes:** Trophies galore. **Registration:** 8:00-8:45. **Rnds:** 9, 2, 7 / 9:30, 2:30. **Annual Business Meeting:** Sunday at 8:30 am. All resident MCA members urged to attend. **Entries to:** Thad Suits, 2015 4th Ave. N. Great Falls, MT 59401. Tel. 406-453-6160.

Coming in 2001...

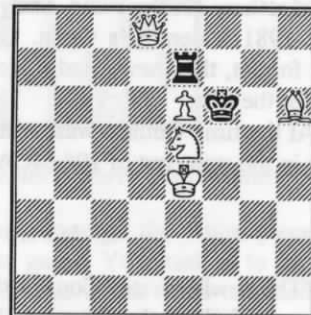
VCO

A Chess Odyssey

The Polgar Corner

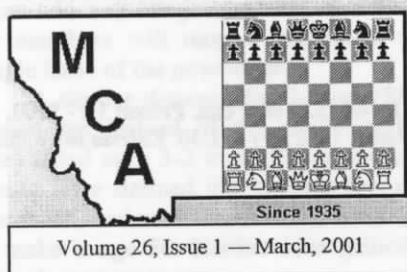
The following position is taken from the encyclopaedia *Chess* by László Polgár. How quickly can you find this mate in two?

The answer is on the back page.



White to move and mate in 2

Thad Suits
2015 4th Ave N.
Great Falls, MT 59401



20 and 10 years ago in MCN

March 1981

Matthew Guthrie and **Andy Shuck** went 3-0 to tie for first in the 1981 Valentine's Open. Unfortunately, due to the three-round format, they never had the opportunity to play against each other for the title.

At the time Guthrie was, with a rating of 1944, the top rated player in the state, out of 108 MCA members.

March, 1991

"The newly revised Constitution of the Montana Chess Association, ratified by the Board of Directors, is included with this issue for the consideration of the members."

Answer to "What's the Cruncher?"

From Petrak-Skovron, 2000 Chinook Open — Dennis Petrak had (but overlooked) the pretty shot 1.Bc7!, winning the exchange with a subsequent 2.QxR.

Answer to "The Polgar Corner" - 1.Qd6!