



# MONTANA CHESS NEWS

Montana Chess News is published by the MONTANA CHESS ASSOCIATION, an affiliate of the U. S. CHESS FEDERATION  
Promoting Chess Excellence by Education and Competition  
Membership / Subscription = \$6 / yr regular, \$3 / yr junior



Editor - Les Brennan, P.O. Box 2404  
Colstrip, MT 59323 (406) 748-2154

**SHERWOOD MOORE WINS UCCC 1ST SUMMER  
NOWAK WINS MIDSUMMER OPEN  
McBROOM & MOORE TOP UCCC 2ND SUMMER  
JOHANSSON, Z. MAYER & DUKE TIE @ RIMROCK  
CARPENTER / BRENNAN TIE AT CLOSED WATCHERS' OPEN  
CARPENTER WINS WANNABE ACTION OPEN**

## NOWAK THREEPEATS

### This Issue:

All the Champion's games  
from the 1994 State Closed  
Championship - p.9

Reports and games from  
all recent Montana  
Tournaments

Letters from the  
members in the  
"Forum" - P. 10

More exciting  
tournaments  
slated! - p. 11

### And Much More!

**THE  
WHITE  
KING  
visits  
THE  
BLACK  
CASTLE**

(and returns unscathed!)

See McBroom / McCourt - Page 4



# What's New

## Cause célèbre:

Though it's a done deal, the discussion of its merit continues. Quite a few members are suggesting that the ten-man Swiss will be rather destructive, and that it won't last long. Several members have taken the opportunity to address the membership in the newsletter (See Member's Forum). The letters are in the order received.

## Who qualifies?

On August 14, the MCA officers voted on the options for selecting seeds to the next State Closed (The ten-man Swiss allows for four new qualifiers). In the last issue of Montana Chess News, David Duke invited those so inclined to offer their feedback before the officers would decide on the procedure. Thank you for your input. Turns out there will be two (2) new GP qualifiers and two (2) new State Open qualifiers.

## Midsummer Open:

Report by Bill McBroom

A total of 14 players participated in the UCCC Midsummer Open. Since the prize fund (\$225.00 in Chess Digest gift certificates) was guaranteed, everyone had good chances. In fact, there were ties for 2nd and 3rd prizes and for both class prizes with the result that eleven of the fourteen participants took something home!

First prize of \$100 went to our State Champion, Greg Nowak -- with 4 points. His first round loss to Michael Steve Schwartz (of Walla Walla, WA) gave Steve the Biggest Upset prize of \$20, a glow that probably lasted all the way home and beaucoup rating points (625 was the difference in ratings). With 3.5 [points] each, Romie Carpenter, Hans Anderson and John Rayburn (All of Missoula) split 2nd and 3rd prizes, or \$25 each.

The Under 1700 class prize was split between Missoula's Sherwood Moore and Bob Rajala, each having an even score. The Under 1500 prize was shared four ways: Hardy Grover of Three Forks, Rodney Jokl of Coeur D'Alene, Carl Jacobs of Victor and Anthony Liebert of Yakima, WA. Each received the princely sum of \$3.75 for their points and a half.

While most games were over well before the sudden-death time control, there were occasional time scrambles. Two games involved players claiming a draw on the grounds of "insufficient losing chances". This puts the TD in the position of being asked to adjudicate a game. In both cases in the tournament, the claim was not honored (the draw not being obvious) and the game continued. The standard, according to the new rules -- a position in which a class C player can hold a master to a draw -- is demanding. In [this] event, both claimants lost their games after continuing for several moves. Words to the wise: Learn this new rule, and if the claim is reasonable, claim it just as you slip under five minutes remaining, not when your flag is hanging. There is a penalty of one minute deducted from your clock if your claim is obviously without merit. And, if you are directed to continue (a likely result), you will probably need all the time you have to demonstrate the draw.

## Rimrock Open:

The Mayer house proved to be a comfortable and quiet venue for an off-Broadway chess tournament, and twelve players were there to witness the giant sucking sound of rating points leaving Johansson, Long and Brennan, because of David Duke. David's first-round game with Jan Johansson is in the Recent Games section for your enjoyment. Eriel Mayer scored a nice upset over Arman Goplen (462 points), and that game is also in this issue. Jonni Ammond (1321) fought to draws against Long (1847), Polcari (1346) and Brennan (1831). Jonni says he's been doing a little study lately! Magnum opus, Jonni! You too, Mr. Duke!

## The State Closed:

When all six participants in this year's Championship playoff pledged their approval of meeting in Bozeman on August 27 & 28, it was immediately carved in stone (It has never really been very easy getting six players to the same place at the same time!). So it came to be, but then Thad Suits had to bow out and John C. Thompson accepted his place as first alternate. Then Les Brennan bowed out, feeling as though his chess game is suffering (This gave Michael Long a shot at it, being next in the Grand Prix). Then Michael Long bowed out for reasons not unlike Les', giving Paul Motta a shot at it, Paul being the next person in the Grand Prix finals. After all was said and done, and all deference had been given, MCA had a very strong State Closed & the Champion's games are in print for your edification. Greg Nowak won easily, losing only to Zygmund Mayer, saying "Chess skill is good, but luck is also good!"

## State Closed Satellites:

Steve Scarff succumbed to pressure from players urging him to throw a satellite for the Closed, and worked on details for one with only two weeks to spread the word. The familiar nine-game format was chosen (four games G/90 on Saturday and five games G/30 on Sunday). The advertizing for this one was strictly word-of-mouth. These events made for great fun! Unfortunately, there wasn't enough room in this issue for games from these events, but some diagrams are included for your enjoyment!

## Overdue Awards:

Sherwood Moore inquired recently as to who won the 1993 Biggest Upset Award, and no wonder he asked - It was never published in MCN. Sorry! Hardy Grover won that distinction and award (which hasn't been given to him yet). David Duke is having trophies made for several people so as to bring us up to date. Other MCA award Laureates, discovered through the investigative labors of Sherwood Moore, are John Kennedy for the Greatest Rating Gain of 1992 (95 points) and Hardy Grover for the Greatest Rating Gain of 1993 (97 points). Trophies are in the making for them. Honorable mention should go to Greg Nowak and Lou Polcari for each gaining 90 points in 1992, and to two players who were provisional, Bob Rajala and Patrick McAndrew for gaining 218 points and 168 points respectively in 1992. The Greatest Rating Gain award is, however, based on established ratings. In 1993 Sherwood Moore followed behind Grover, gaining 90 points. Also, the four titlists on the front of the last MCN have trophies being made.

## JUST FOR FUN:

### Step 1

First, count the number of times the letter F occurs in the sentence at left. Then follow the instructions in step 2.

### Step 2

Turn to page 10 and consider the significance of step 3, and how it may relate to your mastery of chess. Remember your F's

FINISHED FILES ARE THE RESULT OF YEARS OF SCIENTIFIC RESEARCH AND THE EXPERIENCE OF MANY YEARS.

### UCCC 1ST SUMMER OPEN

	NAME	RTG	1	2	3	4	TOT
1	S. Moore	1641		1/2	1	1	2.5
2	R. Carpenter	1810	1/2		0	1	1.5
	D. McCourt	1780	0	1		1/2	1.5
4	W. McBroom	1649	0	0	1/2		0.5

### UCCC 1ST SUMMER RESERVE

	NAME	RTG	1	2	3	4	TOT
1	D. Gisselbeck	1302		1	1	1	3
2	T. Randolph	UNR	0		1	1	2
3	R. Cain	UNR	0	0		1	1
4	D. Gross	UNR	0	0	0		0

### UCCC MIDSUMMER OPEN

	NAME	RTG	R1	R2	R3	R4	R5	TOT
1	G. Nowak	2227	L6	W1	W10	W5	W2	4
2	R. Carpenter	1810	D8	W2	W7	W6	L1	3.5
3	H. Anderson	1694	W3	L6	W12	D4	W7	3.5
4	J. Rayburn	UNR	L7	W3	W8	D3	W12	3.5
5	K. Limesand	1780	D11	W8	W9	L1	D6	3
6	M. Schwartz	1602	W1	W3	BYE	L2	D5	3
	S. Moore	1641	W4	D9	L2	W10	L3	2.5
8	R. Rajala	1545	D2	L5	L4	W13	W11	2.5
9	R. Erickson	1790	W10	D7	L5	D12	W/D	2
10	H. Grover	1468	L9	BYE	L1	L7	D13	1.5
11	R. Joki	1390	D5	L1	L13	W14	L8	1.5
12	C. Jacobs	1237	BYE	L2	L3	D9	L4	1.5
13	A. Liebert	UNR	L3	L4	W11	L8	D10	1.5
14	E. Goforth	UNR		Houseman		L11	-	0

### UCCC 2ND SUMMER OPEN

	NAME	RTG	R1	R2	R3	TOT
1	McBroom, William	1649	W10	W4	D3	2.5
2	Moore, Sherwood	1641	BYE	W8	W6	2.5
3	McCourt, Daniel	1780	W9	BYE	D1	2
4	Gisselbeck, Donald	1309	W5	L1	W9	2
5	Rayburn, John	UNR	L4	W9	W10	2
6	Cain, Ryan	UNR	D8	W10	L2	1.5
7	Nowak, Gregory	2197	U--	U--	W8	1
8	Gross, Dale M.	1350	D6	L2	L7	0.5
9	Goforth, Emmett	UNR	L3	L5	L4	0
10	Randolph, Tony H.	UNR	L1	L6	L5	0

### RIMROCK OPEN

	NAME	RTG	R1	R2	R3	R4	TOT
1	J. Johansson	2114	L3	W1	W6	W5	3
2	Z. Mayer	2045	W6	W8	D5	D4	3
3	D. Duke	1756	W1	W10	L4	W8	3
4	J. Thompson	2100	W1	L5	W3	D2	2.5
5	P. Motta	2000	W7	W4	D2	L1	2.5
6	B. Martin	1629	L2	W2	L1	W9	2
7	L. Polcari	1346	L5	D9	D10	W12	2
8	L. Brennan	1831	W2	L2	D9	L3	1.5
9	J. Ammond	1321	D10	D7	D8	L6	1.5
10	M. Long	1847	D9	L3	D7	L11	1
11	A. Goplen	1706	L4	L1	L12	W10	1
12	E. Mayer	1244	L8	L6	W11	L7	1

### CLOSED WATCHERS' OPEN

	NAME	RTG	R1	R2	R3	R4	TOT
1	R. Carpenter	1854	W6	L2	W7	W4	3
2	L. Brennan	1831	W8	W1	D4	D3	3
3	M. Long	1847	L7	W5	W6	D2	2.5
4	B. McBroom	1618	D5	W7	D2	L1	2
5	E. Mayer	1244	D4	L3	W8	D6	2
6	S. Scarff	1605	L1	W8	L3	D5	1.5
7	J. Ammond	1321	W3	L4	L1	D8	1.5
8	P. Arnot	1253	L2	L6	L5	D7	0.5

### WANNABE ACTION OPEN

	NAME	RTG	R1	R2	R3	R4	R5	TOT
1	R. Carpenter	1854	W6	W3	D2	W8	W5	4.5
2	L. Brennan	1831	W9	W4	D1	D3	D7	3.5
3	B. McBroom	1618	W/C	L1	W4	D2	W8	3.5
4	Steve Scarff	1605	W8	L2	L3	W10	W9	3
5	M. Long	1847	D7	L8	W9	W6	L1	2.5
6	R. Hull	1453	L1	W7	D8	L5	W10	2.5
7	J. Ammond	1321	D5	L6	W10	D9	D2	2.5
8	J. Loy	1908	L4	W5	D6	L1	L3	1.5
9	E. Mayer	1244	L2	W10	L5	D7	L4	1.5
10	Sonya Scarff	1108	L3	L9	L7	L4	L6	0

### MONTANA STATE CLOSED CHAMPIONSHIP

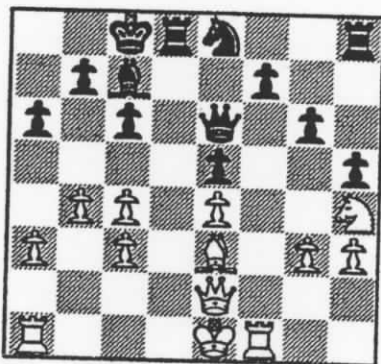
	NAME	RTG	1	2	3	4	5	6	TOT
1	Nowak	2197		0	1	1	1	1	4
2	Z. Mayer	2045	1		0	1	1	0.5	3.5
3	Johansson	2114	0	1		0	1	1	3
4	Thompson	2100	0	0	1		0	1	2
5	Motta	2000	0	0	0	1		0.5	1.5
6	Jensen	2033	0	0.5	0	0	0.5		1



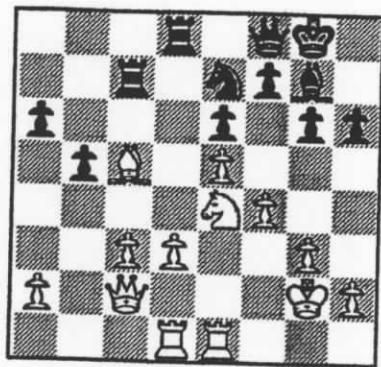
# RECENT GAMES

**Nowak 2249** **Motta 2017**  
**Chess in the Park (Simul)**  
**1994**  
**Benko Opening**

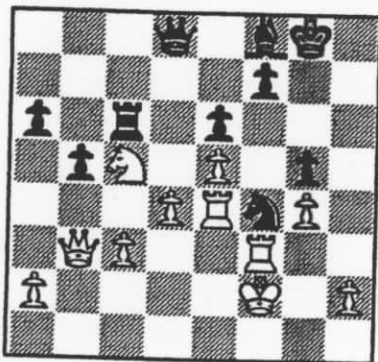
1. g3 e5 2. Bg2 Nf6 3. d3 d5 4. a3  
 c6 5. Nc3 Bc5 6. e3 Bg4 7. Qd2 Qe7  
 8. f3 Be6 9. Na4 Bd6 10. Nc3 Nbd7  
 11. e4 de4 12. fe4 a6 13. Nf3 Bc5  
 14. Qe2 h6 15. Nh4 Ng4 16. Nd1 O-  
 O 17. c3 g6 18. h3 Ngf6 19. Bf3  
 Ne8 20. Ne3 Nf8 21. b4 Bb6 22. Nc4  
 Bc7 23. Be3 Bc4 24. dc4 Ne6 25.  
 Bg4 h5 26. Be6 Qe6 27. Rf1



27...Nd6! 28. a4 Nxe4 29. Qf3 Qxc4  
 30. Rc1 Rd3 31. Ng2 f5 32. White  
 resigns.



29. Bb6 (what else?) Rc6 30. Bxd8  
 Qxd8 31. d4 Nf5 32. Nc5 Qd5 33.  
 Kf2 g5 34. fg5 hg5 35. Qb3 Qd8 36.  
 Re4 Bf8 37. g4 Ne7 38. Rd3 Nd5  
 39. Rh3 Nf4 40. Rf3



40... Bxc5! 41. dxc5? (Rxfx4) Qd2+  
 42. Kg3 Qg2 Mate.

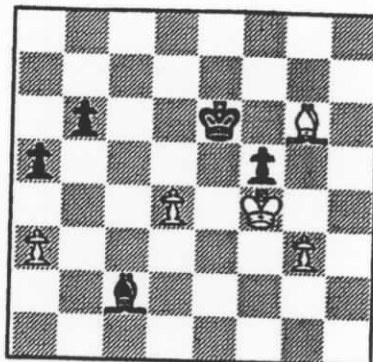
**McCourt 1780** **Moore 1641**  
**UCCC 1st Summer open**  
**6/23/94** **Round 1**  
**King's Indian Attack**

1. e4 e6 2. d3 d5 3. Nd2 c5 4. Ngf3  
 Nc6 5. g3 Nge7 6. Bg2 g6 7. O-O  
 Bg7 8. Re1 O-O 9. Nf1 Qd7 10. c3  
 Rd8 11. Bd2 b6 12. Qc2 Bb7 13.  
 Rad1 Qe8 14. Ng5 h6 15. Nh3 d4 16.  
 f4 Qf8 17. Nf2 dc3 18. bc3 Rd7 19.  
 Ne3 Rad8 20. Bc1 Ba6 21. e5 Bb7  
 22. Nc4 b5 23. Nd6 a6 24. Be3 Na5  
 25. Bc5 Bg2 26. Kg2 Nb7 27. Nb7  
 Bb7 28. Ne4 Rc7?

**Carpenter 1810** **Moore 1641**  
**UCCC 1st Summer open**  
**6/30/94** **Round 2**  
**English Opening**

1. c4 c5 2. g3 g6 3. Bg2 Bg7 4. Nc3  
 Nc6 5. e3 e6 6. Nge2 Nge7 7. O-O  
 O-O 8. d4 cd4 9. ed4 d5 10. cd5 Nd5  
 11. Nd5 ed5 12. Be3 Bf5 13. Nc3  
 Be6 14. Rc1 Qd7 15. Re1 Rfe8 16.  
 Na4 b6 17. Nc3 Rac8 18. Ne2 Bh3  
 19. Bh1 Bg4 20. Qa4 Bf5 21. Rc3  
 Ne7 22. Qd7 Bd7 23. Rec1 Rc3 24.  
 Rc3 Rc8 25. Nf4 Rc3 26. bc3 Bc6  
 27. Kf1 Kf8 28. Ke2 Ke8 29. Bg2  
 Kd7 30. Bc1 Bh6 31. Bh3 f5 32. Bg2  
 Bb5 33. Kd1 Bf4 34. Bf4 Bc4 35. a3  
 Nc8 36. Kd2 Nd6 37. Bd6 Kd6 38.  
 h4 a5 39. Ke3 Ke6 40. Kf4 h6 41.  
 Bf3 Kf6 42. Bd1 g5 43. hg5 hg5

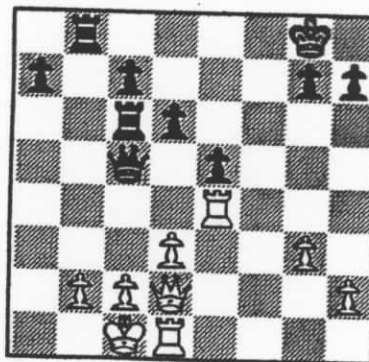
44. Ke3 Ba2 45. Be2 Ke6 46. f4 gf4  
 47. Kf4 Bb1 48. c4 dc4 49. Bc4  
 Kd6 50. Bf7 Bc2 51. Bg6 Ke6



52. g4 fxc4 53. Bxc2 Kd5 54. Kxg4  
 Draw agreed

**McBroom 1645** **McCourt 1780**  
**UCCC 1st Summer open**  
**7/1/94** **Round 2**  
**Philidor's Defense**

1. e4 e5 2. Nf3 d6 3. d3 f5 4. ef5  
 Bf5 5. Nbd2 Nf6 6. g3 Nc6 7. Bg2  
 Be7 8. Nc4 O-O 9. Bg5 Ng4 10.  
 Be7 Qe7 11. Qd2 Rab8 12. O-O-  
 O b5 13. Ne3 Ne3 14. fe3 Be6  
 15. Qc3 Rb6 16. Nh4 b4 17. Qd2  
 Ba2 18. Bc6 Rc6 19. Qb4 Qg5  
 20. Ng2 Bd5 21. Qd2 Bg2 22.  
 Qg2 Qe3 23. Qd2 Qc5 24. Rhe1  
 Rb8 25. Re4

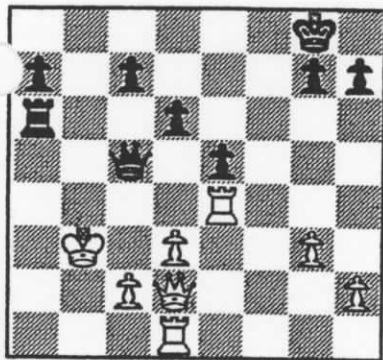


## THUNDER LIZARD CHESS SUPPLIES

Books, Boards, Clocks, pieces  
 525 1st St. Idaho Falls, ID 83401  
 (208) 523-5117

Create beautiful chess diagrams!  
 Linares TrueType™ chess font.  
 Specify Windows or Macintosh.  
 Send \$29 to: Alpine Electronics,  
 526 West 7th, Powell, WY 82435  
**Money-back guarantee!**

Rxb2! (Beware of Greeks bearing gifts!) 26. Kxb2 Rb6+ 27. Ka2 Ra6+ 28. Kb3

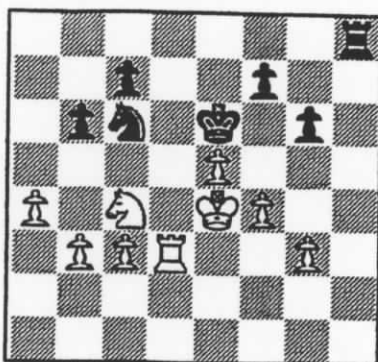


Black to move, mate in 5.  
Can you see it?

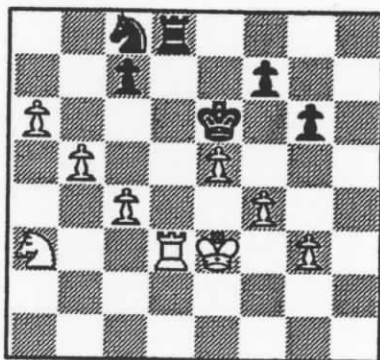
28...Qa3+ 29. Kc4 Rc6+? Dan misses the follow up, i.e: 29...Qa2+ 30. Kc3 Rc6+ 31. Kb4 a5+ 32. Kb5 Rb6 mate. Or, if 30. Kb4 c5+ 31. Kc3 Ra3 mate (31. Kb5 Rb6 mate) 30. Kd5 (In the face of danger, Bill maintains his sangfroid and plays on!) 30...Qc5+ 31. Ke6 (Any port in a storm!) 31...d5+ 32. Kxe5 ("Don't give up the ship!" - James Lawrence, Captain of USS CHESAPEAKE, 1812.) 32...dxe4+ 33. Kxe4 Re6+ 34. Kf3 Qd5+ (+!) 35. Kf2 Qh5 36. h4 Rf6+ Kg2 Qd5+ 38. Kh2 Qf7 39. Qb4 Rf2+ 40. Kg1 h6 41. Qb3! (White rises phoenix-like from the ashes) and a Draw is agreed!

Schwartz 1600 Nowak 2227  
UCCC Midsummer Open  
7/16/94 Round 1  
King's Indian Attack

1. Nf3 Nf6 2. g3 b6 3. Bg2 Bb7 4. O-O e6 5. d3 d5 6. Nfd2 Nbd7 7. e4 de4 8. de4 a5 9. a4 Qc8 10. b3 Bc6 11. Ba3 Bb4 12. Qe2 Qb7 13. Bb4 ab4 14. Qc4 h5 15. Qb4 h4 16. Nc3 hg3 17. hg3 Ng4 18. Nb5 Ndf6 19. Nc4 Rd8 20. Rfd1 Rd1 21. Rd1 Bb5 22. Qb5 Ke7 23. e5 Nd5 24. Bd5 ed5 25. Qd5 Qd5 26. Rd5 Ke6 27. Rd4 Nh6 28. Kg2 Nf5 29. Rd3 Ne7 30. c3 Nc6 31. f4 Kf5 32. Kf3 Ke6 33. Bje4 g6



34. Nxb6! Rh1 (34...cxb6 35. Rd6+ 35...any 36. Rxc6 wins a pawn whether or not Black recaptures.) 35. Nc4 Rb1 36. b4 Re1 37. Re3 Rb1 38. a5 Na7 39. Na3 Ra1 40. c4 Nc6 41. a6 Rd1 42. b5 Rd4 43. Kf3 Na7 44. Rb3 Nc8 45. Ke3 Rd8 46. Rd3

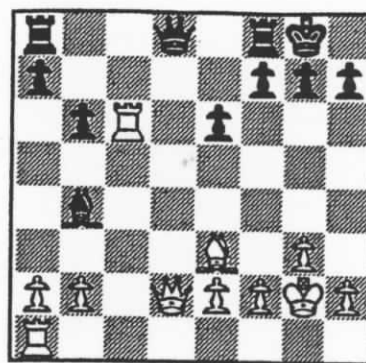


Nb6?? 47. Rxd8 Black resigns

Carpenter 1810 Rajala 1545  
UCCC Midsummer Open  
7/16/94 Round 1  
English Opening

1. c4 b6 2. g3 Bb7 3. Nf3 e6 4. Bg2 Nf6 5. O-O Be7 6. Nc3 O-O 7. d4 d5 8. cd5 Nd5 9. Nd5 Bd5 10. Be3 Nd7 11. Qd2 c5 12. Rfc1 cd4 13. Nd4 Bg2 14. Kg2 Ne5 15. Nc6 Nc6 16. Rc6 Bb4!

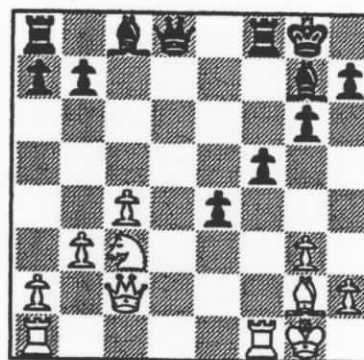
If your game isn't published in Montana Chess News, you'll probably see it in **Rocky Mountain Chess** P.O. Box 1508 Mills, WY 82644 (307) 235-5705



17. Qxd8 (17. Qxb4? Qd5+ followed by 18...Qxc6) Rxf8 18. Rac1 h6 19. Rc7 Bd2 20. R1c2 Bxe3 21. fxe3 Kf8 22. Rb7 Rac8 23. Rxc8 Rxc8 24. Rxa7 Rc2 25. Kf3 Rb2 26. h4 Rb5 27. e4 Ke8 28. Ke3 e5 29. Kd3 Rc5 30. h5 Rc6 31. a4 Rc5 32. Kd2 Rc4 33. Kd3 Rd4 34. Ke3 Rd7 35. Rd7 Kd7 36. Kd3 Kd6 37. Kc4 Kc6 38. Kb4 f6 39. Kc4 Kd6 40. Kb5 Kc7 41. g4 Kb7 42. Kb4 Draw agreed.

Grover 1509 Erickson 1790  
UCCC Midsummer Open  
7/16/94 Round 1  
English Opening

1. c4 e5 2. g3 g6 3. Bg2 Bg7 4. e3 Nc6 5. Ne2 Nge7 6. d4 ed4 7. Nd4 O-O 8. O-O Ne5 9. b3 c5 10. f4 cd4 11. fe5 de3 12. Be3 Nf5 13. Bd4 Nd4 14. Qd4 d6 15. Nc3 de5 16. Qe4 f5 17. Qe2 e4 18. Qc2

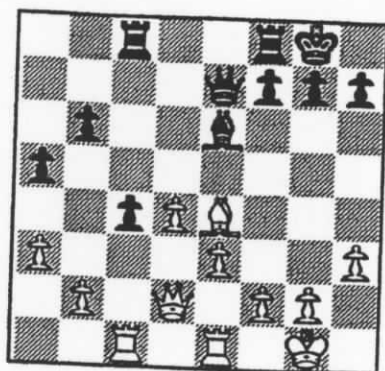


18...Qd4+ White resigns.

MEMBERS, USE THE FORUM  
SEE PAGE 10.

**Carpenter 1810**      **Nowak 2227**  
**UCC Midsummer Open**  
 7/17/94      **Round 5**  
**English Opening**

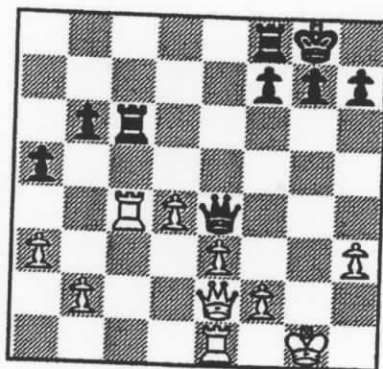
1. c4 Nf6 2. g3 e6 3. Nf3 b6 4. Bg2  
 3b7 5. O-O Be7 6. b3 O-O 7. Bb2  
 Qc8 8. Nc3 Rd8 9. Rc1 d5 10. cd5  
 ed5 11. d4 Re8 12. Ne5 Qd8 13. e3  
 Bf8 14. Nd3 Nbd7 15. Nf4 c6 16. h4  
 Bd6 17. Nce2 Qe7 18. Nh3 Ne4 19.  
 Nef4 b5 20. Nd3 a5 21. a3 a4 22.  
 b4 Nb6 23. Ng5 Ng5 24. hg5 Qg5 25.  
 Nc5 Bxc5 White resigns.



Bxh3 22. gxh3 Qxe4 23. Qe2 Rc6  
 24. Rxc4

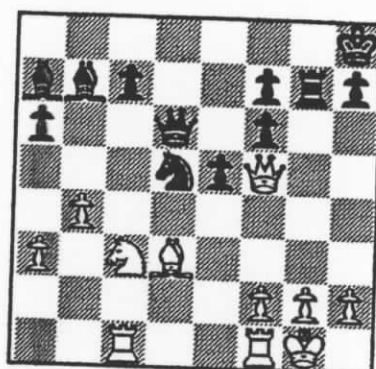
**Limesand 1788**      **Schwartz 1600**  
**UCC Midsummer Open**  
 7/17/94      **Round 5**  
**Pirc Defense**

1. d4 d6 2. Bf4 Nf6 3. e3 g6 4. Bd3  
 Bg7 5. Nd2 O-O 6. c3 b6 7. Qc2 Bb7  
 8. f3 c5

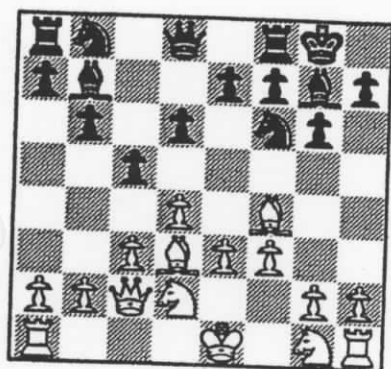


Rg6+ 25. Qg4 Rxc4+ 26. hxg4  
 Qxc4+ 27. Kf1 Rc8 28. b3 Rc4 29.  
 bc4 Qc8 30. Rc1 h5 31. c5 bc5 32.  
 Rc5 Qa6 33. Ke1 g6 34. a4 f6 35.  
 Rb5 h4 36. Kf1 Qc6 37. Ra5 Qh1  
 38. Ke2 h3 39. d5 Qe4 40. Ra8 Kg7  
 41. Ra7 Kh6 42. d6 Qd5 43. Rc7  
 Qd6 44. Rc4?

4...Nf6 5. Bc4 Bb4 6. Ne2 Nbd7 7.  
 O-O O-O 8. a3 Ba5 9. b4 Bb6 10.  
 Bg5 a6 11. Ne4 Ba7 12. Bb3 b5 13.  
 Rc1 Bb7 14. c4 bc4 15. Bc4 Rc8  
 16. Qb3 Nb6 17. Nf6 gf6 18. Bh6  
 Kh8 19. Bf8 Qf8 20. Qf3 Qd6 21.  
 Bd3 Rg8 22. Qf5 Rg7 23. Nc3 Nxd5



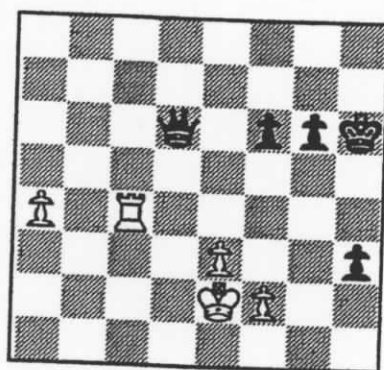
24. Nxd5? (24. Ne4!) Qxd5 25. Be4  
 Qxe4 26. Qxe4 Bxe4 27. g3 Bb6  
 28. Rfe1 Bd5 29. Red1 c6 30. a4  
 Rg4 31. b5 Bb3 32. Rd6 Ba4 33.  
 Rdc6 Bf2 34. Kf2 Bb5 35. Rf6 Kg7  
 36. Rb6 Rc4 37. Rd1 Rd4 38. Rc1  
 Rc4 39. Rd1 Rd4 40. Rc1 Rc4 41.  
 Rd1 Rd4 Draw (by repetition)



9. g4? Nxc4 (Ouch!) 10. e4 Nf6 11.  
 d5 a6 12. h4 Nh5 13. Ne2 b5 14. c4  
 b4 15. Nf1 Nd7 16. Nfg3 Nf4 17.  
 Nf4 Ne5 18. Be2 Bc8 19. h5 Bd7  
 20. Nh3 Bxh3 Draw agreed.

Here's a neat upset just submitted :  
**Moore 1653**      **Gisselbeck 1302**  
**UCC Club Championship 1994**  
**Queen's Gambit Declined**

1. d4 d5 2. c4 e6 3. Nc3 Nf6 4. Bg5  
 Be7 5. Nf3 O-O 6. e3 b6 7. cd5 ed5  
 8. Bd3 Bg4 9. h3 Be6 10. Rc1 Nbd7  
 11. O-O c5 12. Re1 Rc8 13. a3 a5  
 14. Nb5 c4 15. Bb1 Ne4 16. Be7  
 Qe7 17. Nd2 Ndf6 18. Nc3 Nd2 19.  
 Ne4 20. Ne4 de4 21. Bxe4



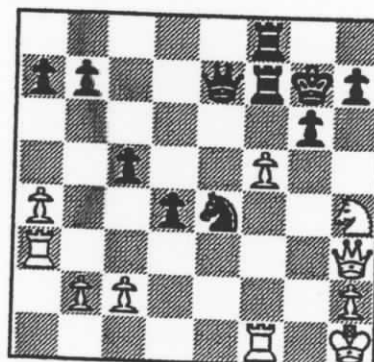
44...Qa6 45. Kf3 Qxc4 White  
 resigns.

**McCourt 1780**      **McBroom 1649**  
**UCC 2nd Summer Open**  
 8/4/94      **Round 3**  
**Blackmar Delmer Gambit**

1. e4 d5 2. d4 de4 3. Nc3 e5 4. d5

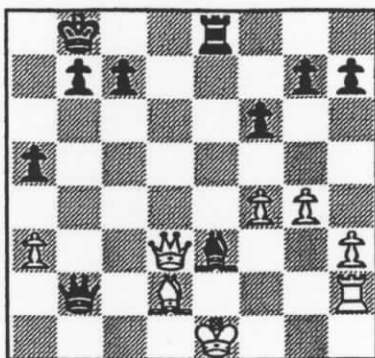
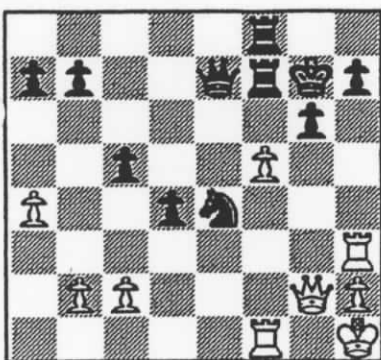
**Johansson 2114**      **Duke 1756**  
**Rimrock Open**  
 8/20/94      **Round 1**  
**King's Indian Attack**

1. e4 c5 2. Nf3 Nc6 3. d3 g6 4. g3  
 Bg7 5. Bg2 Nf6 6. O-O d5 7. Nbd2  
 O-O 8. Re1 Re8 9. Qe2 d4 10. a4 e5  
 11. Nc4 Nd7 12. Nd6 Re6 13. Nc8  
 Rc8 14. Ng5 Re7 15. f4 f6 16. Nf3  
 Bh6 17. Bh3 Rb8 18. Kh1 Kg7 19.  
 Nh4 Qc7 20. Qg4 Kh8 21. Qe2 ef4  
 22. Qf1 f5 23. Bf4 Bf4 24. gf4 fe4  
 25. de4 Nf6 26. Qf3 Rf8 27. Ng2  
 Nh5 28. f5 Ne5 29. Qd1 Qd7 30. Rf1  
 Ref7 31. Ra3 Qe7 32. Bg4 Ng4 33.  
 Qg4 Nf6 34. Qh3 Ne4 35. Nh4 Kg7



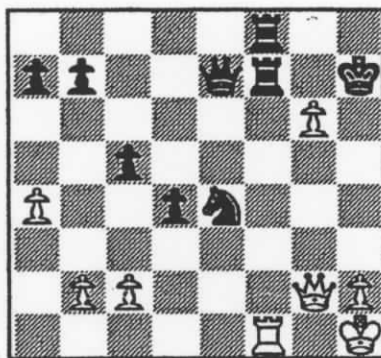


36. Qg2?? (Oops! Maybe he'll think it's a trap?) Qxh4 (Not this time!)  
37. Rh3 Qe7



37. White resigns.

38. Rxf7+ (Having just blundered away a piece, if White is to find anything, he must find it now!)  
Kxh7 39. fxg6+



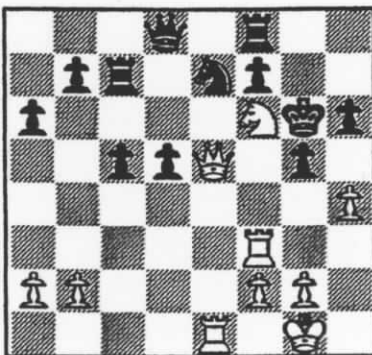
Kh6 40. Qh3+ Kxg6 41. Rg1+ Kf6  
42. Qh4+ Ke5 43. Qh5+ Rf5 White resigns.

**Thompson 2100** **Motta 2000**  
**Rimrock Open**  
**8/20/94** **Round 2**  
**Budapest Gambit**

1. d4 Nf6 2. c4 e5 3. de5 Ng4 4. Nf3  
Bc5 5. e3 Nc6 6. Nc3 Nge5 7. Ne5  
Ne5 8. f4 Nc6 9. Bd3 Qh4 10. g3  
Qh3 11. Qf3 d6 12. Bd2 Bg4 13. Qf2  
Nb4 14. Bb1 a5 15. a3 Nc6 16. Ne4  
Ba7 17. Ng5 Qh5 18. Bd3 f6 19. Ne4  
d5 20. Nc3 O-O-O 21. Nd5 Rd5 22.  
cd5 Qd5 23. Qf1 Rd8 24. h3 Bh5 25.  
g4 Bf7 26. Bf5 Kb8 27. Rh2 Qb3 28.  
Rb1 Bc4 29. Qf3 Re8 30. Be4 Nd4  
31. Qg2 Bd3 32. Bd3 Qd3 33. Rc1  
Nc2 34. Rc2 Qc2 35. Qe2 Qb2 36.  
d3 Bxe3 (Diagram next column)

**E. Mayer 1244** **Goplen 1706**  
**Rimrock Open**  
**8/21/94** **Round 3**  
**Göring Gambit**

1. e4 e5 2. Nf3 Nc6 3. d4 ed4 4. c3  
dc3 5. Bc4 Nf6 6. Nc3 Bb4 7. Bd2  
d6 8. h3 O-O 9. O-O Bc3 10. Bc3  
Ne4 11. Qc2 Nc3 12. Qc3 a6 13.  
Rad1 Bd7 14. Bd3 Ne7 15. Qc2 g6  
16. Qc4 Bb5 17. Qe4 Bd3 18. Rd3  
d5 19. Qf4 c5 20. Ng5 h6 21. Ne4  
g5 22. Nf6 Kg7 23. Qe5 Kg6 24. Rf3  
Rc8 25. Re1 Rc7 26. h4!

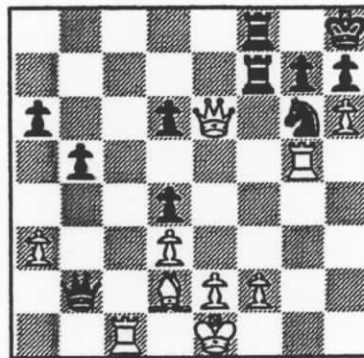


26...gh4 27. Qh5 Kg7 28. Qg4 Ng6  
29. Re5 Rc6 30. Rd5 Rd6 31. Rdf5  
Rd4 32. Qh5 Rh8 33. Ne4 Rf8 34.  
Nc5 Qd6 35. g3 Rd1 36. Kg2 Rd4  
37. Nb7 Qc7 38. Nc5 Qc6 39. Rf6  
Rd6 40. Ne4 Rf6 41. Nf6 Qe6 42.  
Qg4 Qc6 43. Nh5 Kh7 44. Qd4 Rg8  
45. Nf6 Kh8 46. Ng8 Kg8 47. Qd8  
Kg7 48. Qd4 Kg8 49. Qc3 Qa8 50.  
Kh2 Qb7 51. Qe3 Black resigns.

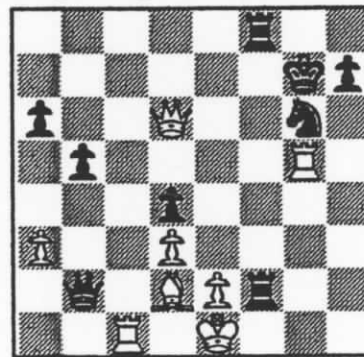
**Z. Mayer 2045** **Thompson 2100**  
**Rimrock Open**  
**8/21/94** **Round 4**  
**Grob's Attack**

Next column

1. g4 d5 2. Bg2 e5 3. c4 dc4 4. Qa4  
Bd7 5. Qc4 Bc6 6. Bc6 Nc6 7. Nf3  
Bd6 8. Nc3 Nge7 9. d3 O-O 10. h4  
Qd7 11. Bd2 a6 12. Rc1 Rad8 13. h5  
b5 14. Qe4 f5 15. gf5 Qf5 16. Qh4  
Nd4 17. Nd4 ed4 18. Ne4 Qe6 19.  
Rg1 Nf5 20. Qg4 Rd7 21. a3 Qb3 22.  
Nd6 cd6 23. Qe4 Re7 24. Qf3 Qb2  
25. Qd5 Ref7 26. Rg5 Ne7 27. Qe6  
Kh8 28. h6 Ng6



29. hxg7+ Kxg7 30. Qxd6 Rxf2



31. Rg1 R2f7 32. Qxa6 Draw agreed.



**MCA GRAND PRIX  
POINT STANDINGS**

As of the Rimrock Open  
8/21/94

1. Johansson....8.375
2. Z. Mayer.....8.375
3. Duke.....8.375
4. Thompson...6.049
5. Motta.....6.049

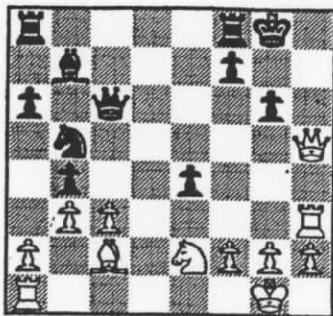
\_\_\_\_\_  
\_\_\_\_\_  
\_\_\_\_\_

# HUMOR DEPT.

(Positions from the Closed Watchers' Open)

Scarff 1605

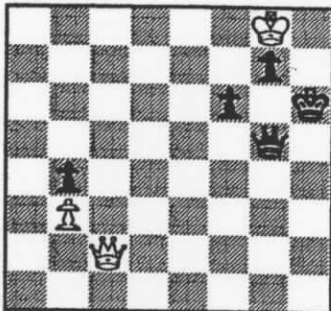
Arnot 1253



After 27. Rh3?? (threatening mate, right?) 27...Qf6?? (27...gxh5) 28. Qh7++

Long 1847

Brennan 1831

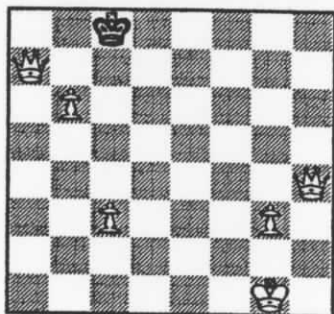


After 63...Kh6?? 64. Qh2+? (64. Qh7++) 64...Kg6?? (64...Qh5) 65. Qc2+?? (65. Qh7++) The game was drawn.

Ammond 1321

Brennan 1831

from the Wannabe Action Open

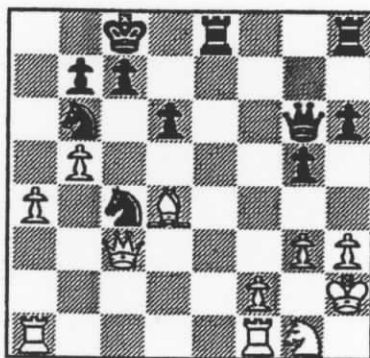


After 52. Qa7?? (Oops!) Stalemate.

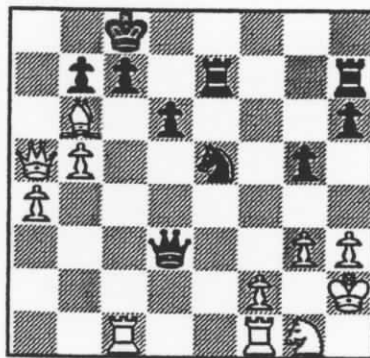
Now, Some Games from the State Closed. All of Greg Nowak's games are on p. 9

Johansson 2114 Z. Mayer 2045  
1994 Montana State Closed  
8/27/94 Round 2  
King's Indian Attack

1. e4 Nf6 2. d3 e5 3. Nf3 Nc6 4. g3 Bc5 5. Bg2 d6 6. O-O h6 7. c3 Bg4 8. h3 Be6 9. b4 Bb6 10. a4 a5 11. b5 Ne7 12. Nbd2 Nd7 13. d4 f6 14. Kh2 g5 15. Bb2 Ng6 16. Ng1 Qe7 17. Bf3 O-O-O 18. Bh5 Qh7 19. Qe2 Rdf8 20. Nc4 f5 21. ef5 Bf5 22. Nb6 Nb6 23. c4 ed4 24. Bd4 Re8 25. Qf3 Ne5 26. Qc3 Bg6 27. Bg6 Qg6 28. Qa5 Nec4 29. Qc3



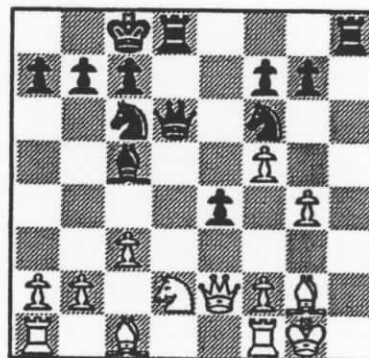
29...Ne5?? 30. Bxb6 Rh7 31. Rac1 Ree7 32. Qa5 Qd3



33. Qa8+ Kd7 34. Rxc7+ Ke6 35. Qc8+ Nd7 36. Re1+ Kf6 37. Rxe7 Rxe7 38. Rxd7 Black resigns.

Johansson 2114 Thompson 2100  
1994 Montana State Closed  
8/28/94 Round 5  
King's Indian Attack

1. e4 e5 2. Nf3 Nc6 3. d3 d5 4. Nbd2 Nf6 5. g3 de4 6. de4 Bc5 7. Bg2 Bg4 8. h3 Bh5 9. g4 Bg6 10. Nh4 Qd7 11. O-O O-O-O 12. Nf5 h5 13. c3 hg4 14. hg4 Bf5 15. ef5 e4 16. Qe2 Qd6!



17. Re1 Qh2+ 18. Kf1 Rh4 19. Qb5



Rxg4 20. Qxc5 Qxg2+ 21. Ke2 e3 22. Ne4 Nxe4 23. Qxe3 Nxf2 White resigns.

## Planning to play the MCA Grand Prix circuit?

There will be five more Grand Prix events this fiscal year. The Billings Chess Club just had theirs (The Rimrock) and the Great Falls Chess Club will be sponsoring the Chinook in October. The rest are yet to be announced, the last one being the State Open, sponsored by MCA in May.

### Mileage Between Montana's USCF Affiliate Club Cities

	Billings	Bozeman	Colstrip	Great Falls	Missoula
1					
2	Billings	140	122	222	342
3	Bozeman	140	262	188	201
4	Colstrip	122	262	300	464
5	Great Falls	222	188	300	166
6	Missoula	342	201	464	166



**Jensen 2033** **Nowak 2197**  
**1994 Montana State Closed**  
**8/27/94** **Round 1**  
**Torre Attack**

d4 Nf6 2. Bg5 d5 3. Bf6 gf6 4. e3  
 g8 5. Qd3 Rg7 6. Ne2 e5 7. e4 f5  
 8. ed5 e4 9. Qb5 c6 10. dc6 Nc6 11.  
 Nbc3 a6 12. Qa4 Bd7 13. d5 b5 14.  
 Nb5 ab5 15. Qb3 Qa5 16. c3 Ne5 17.  
 Nd4 b4 18. Qc2 bc3 19. bc3 Bc5 20.  
 Nb3 Qa7 21. Nc5 Qc5 22. c4 f4 23.  
 Qe4 Qb4+ 24. Ke2 Qb2+ White  
 resigns.

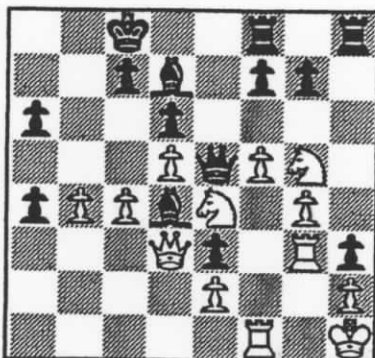
**Nowak 2197** **Motta 2000**  
**1994 Montana State Closed**  
**8/27/94** **Round 2**  
**Anderssen Opening**

1. a3 Nc6 2. c4 e5 3. Nc3 a5 4. e3  
 Nf6 5. Nd5 Bc5 6. b3 O-O 7. Bb2  
 Re8 8. Bd3 d6 9. Qc2 h6 10. Ne2  
 Nd5 11. cd5 Ne7 12. Nc3 c6 13. dc6  
 bc6 14. O-O Rb8 15. f4 Be6 16. Bc4  
 d5 17. Bd3 e4 18. Na4 Ba7 19. Ba6  
 f4 20. Nc5 Bc5 21. Qc5 de3 22. de3  
 Kb3 23. Rad1 Qb6 24. Qb6 Rb6 25.  
 Ra6 26. Rb1 Bd5 27. f5 f6 28.  
 Nc8 29. Bc5 Na7 30. a4 Nc8 31.  
 Rb8 Kf7 32. Rfb1 Ne7 33. Re8 Ke8  
 34. Rb8 Kf7 35. Rb7 - Black's flag  
 falls.

**Thompson 2100** **Nowak 2197**  
**1994 Montana State Closed**  
**8/27/94** **Round 3**  
**Black Knights' Tango**

1. d4 Nf6 2. c4 Nc6 3. Nc3 e5 4. d5  
 Ne7 5. g3 Nf5 6. Bg2 Bc5 7. Nf3 e4  
 8. Ng5 e3 9. f3 a6 10. Qd3 d6 11.  
 Nge4 Ba7 12. O-O Qe7 13. b4 Nd7

14. f4 h5 15. Bb2 h4 16. g4 h3 17.  
 Bf3 Nh4 18. Kh1 Nf8 19. f5 Nd7 20.  
 Nd1 Nf3 21. Rf3 Ne5 22. Be5 Qe5  
 23. Ndc3 Bd7 24. Rg1 O-O-O 25.  
 Ng5 Rdf8 26. Rgg3 Bd4 27. Nce4 b5  
 28. a4? bxa4 29. Rf1



29...Re8!! 30. Nxf7 Qxe4 31. Qxe4  
 Rxe4 32. Nxb8 a3! 33. Rgg1 a2 34.  
 Ng6 a1=Q 35. Rxa1 Bxa1 36. Rxa1  
 36...Rxc4 37. Rb1 Rxc4 38. Rg1  
 Rxb4 White resigns.

**Nowak 2197** **Johansson 2114**  
**1994 Montana State Closed**  
**8/28/94** **Round 4**  
**Benko Opening**

1. g3 Nf6 2. Bg2 g6 3. c4 Bg7 4.  
 Nc3 d6 5. d3 e5 6. Rb1 a5 7. a3 O-O  
 8. b4 ab4 9. ab4 c6 10. Bg5 h6 11.  
 Bf6 Bf6 12. e3 Bg7 13. Nge2 Be6  
 14. O-O Qd7 15. Qd2 d5 16. cd5 cd5  
 17. d4 e4 18. Nf4 Nc6 19. f3 ef3  
 20. Bf3 Ne7 21. Ra1 g5 22. Nd3 b6  
 23. b5 Rac8 24. Rfc1 Rc7 25. Nb4  
 Rfc8 26. Na6 Rc4 27. Be2 Nf5 28.  
 Bc4 Rc4 29. Ne2 Nd6 30. Rc4 Nc4  
 31. Qc3 Bf5 32. g4 Be4 33. Ng3 Qg4  
 34. Rf1 h5 35. Kf2 Nd6 36. Ke1 Bg2  
 37. Rf2 Be4 38. Qc7 Bf8 39. Ne4  
 Qe4 40. Ke2 Nf5 41. Rf5 Qf5 42.  
 Nb8 g4 43. Nd7 Qf3 44. Kd2 Qf2

45. Kc1 Qf1 46. Kd2 Bb4 47. Kc2  
 Qf5 48. Kb2 Qf2 49. Kb3 Be7 50.  
 Qe5 Bh4 51. Nb6 Bf6 52. Qe8 Kg7  
 53. Nd5 Qh2 54. Nf6 Kf6 55. b6  
 Qh1 56. Qe5 Kg6 57. Qd6 f6 58. d5  
 Qb1 and Black's flag falls.

**Nowak 2197** **Z. Mayer 2045**  
**1994 Montana State Closed**  
**8/28/94** **Round 5**  
**English / Macho Grob**

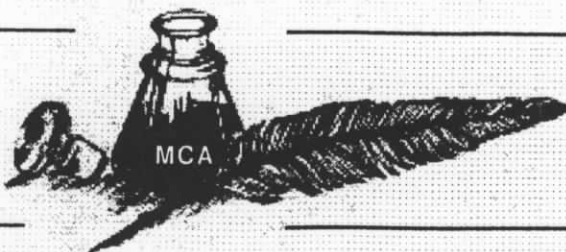
1. c4 g5 2. e3 c5 3. h4 gh4 4. Nc3  
 Nc6 5. d4 Bg7 6. d5 Bc3 7. bc3 Ne5  
 8. f4 Ng6 9. e4 Qa5 10. Qd3 Nf6 11.  
 Be2 Ne4 12. Nf3 Ng3 13. Rh2 d6 14.  
 Nh4 Ne2 15. Ke2 Bg4 16. Kf2 O-O-O  
 17. Nf3 e6 18. Be3 Bf5 19. Qd2 f6  
 20. Rh6 Qa4 21. de6 Be6 22. Rh5  
 Bc4 23. a3 Qc6 24. Qc2 Rde8 25.  
 Qf5 Kb8 26. Re1 Ne7 27. Qf6 Nd5  
 28. Qg7 Reg8 29. Qh6 Rg6 30. Qg6  
 hg6 31. Rh8 Kc7 32. Bd2 Nf6 33.  
 Ng5 Qa4 34. Ne6 Kc6 35. Rc8 Kd5  
 36. Nc7 Kc6 37. Ne6 Kb6 38. Rb1  
 Bb5 39. Nc7 a6 40. Nb5 ab5 41. Re1  
 Qc2 42. Re2 Ne4 43. Re4 Qe4 44.  
 Rf8 Qc2 45. Ke1 Qd3 46. Re8 Kc6  
 47. Re3 Qb1 48. Ke2 Kd5 49. Rd3  
 Ke6 50. Re3 Kf5 51. Rd3 Ke6 52.  
 Re3 Kd5 53. Rd3 Kc6 54. Re3 Qa2  
 55. g4 Qc4 56. Kf3 Qd5 57. Ke2 Qg2  
 58. Kd3 Qg4 59. Re8 Qd1 60. Re1  
 c4 61. Ke3 Qc2 62. Re2 Qd3 63. Kf2  
 Kd5 64. Be1 Qh3 65. Bd2 Qh2 66.  
 Kf3 Qh1 67. Kf2 Qa1 68. Re7 Qd1  
 69. Be1 Qc1 70. Re3 Qa3 71. Kf3  
 Qc1 72. Ke2 Qc2 73. Bd2 Qf5 74.  
 Rg3 Qe4 75. Kf2 Qc2 76. Ke1 Ke4  
 77. Ke2 Kd5 78. Rg5 Kc6 79. Rg3  
 d5 80. Re3 b4 81. cb4 d4 82. Re6  
 Kd7 83. Re5 Kd6 84. Re8 Qd3 85.  
 Ke1 c3 86. Bc1 Qc2 87. Ba3 Qb1  
 88. Ke2 Qa2+ White resigns.

**Greg Nowak 1992, 1993 & 1994**  
**Montana State Chess Champion**

**DON'T READ BELOW THIS LINE UNTIL YOU READ BOTTOM OF PAGE 2**

Step 3: A motivational speaker, lecturing at a safety seminar recently (which I attended), effectively demonstrated the power of the preconceived notion by passing out cards to about forty employees of Montana Power company, asking everyone to count the F's on the cards, and then showing those in attendance how most had miscounted. Did you count three F's? Not bad. Did you count four? Five? If you counted six F's, you were being very careful, for there truly are six F's! Most people look for what they expect to see. They look for an F that sounds like an F, skipping right over the word "OF", because the F sounds different.

You're probably already ahead of me on how this applies to chess. At the seminar, I realized immediately how I do the same thing in playing chess. I look for the things I expect to see. I realized that, if I can look straight at an F and not see it, I might also be looking right at killer tactical shots and not seeing them. Sometimes we get weary during a game, and feel like getting up and walking away, maybe looking at other games for a while. Maybe we should stay right where we belong - at our own board, looking for more F's.  
 P.S. Show the "finished files" sentence to a friend or family member. See how many F's they count!



## From Bill Lynch

The Montana Closed State Championship Playoff evolved out of dissatisfaction over the previous method of designating the top Montana finisher (including whichever tie-breaking system was in use) in the Montana Open as the state champion. The objections to this were that some contenders could be knocked off by high rated out of state players which other contenders did not face, and that the contenders rarely played each other. The six man round-robin playoff addressed these concerns, while preserving the importance of the traditional Montana Open tournament by having it serve as a qualifying event (originally for five players, before official adoption of the Grand Prix as an MCA recognized competition).

In my view, there is no advantage to the ten man Swiss playoff voted on by the membership. The round-robin is "self pairing", while a 5 round Swiss with 10 players can be very difficult to pair in the fourth and fifth rounds. A decision must be made regarding tie-breaking for the title and/or for qualification to the next year's playoff, and the format reintroduces situations where contenders may not have played each other. It seems probable that it will be more difficult to assemble ten players than six, and that it will be less feasible to arrange a well attended concurrent open tournament (if desired). Also, my own opinion is that none of the optional qualifying schemes on the table thus far are especially palatable - as they all seem to denigrate the importance of the Grand Prix and/or Montana Open performance.

Speaking again only for myself, I would see a Montana Closed tournament, open to all MCA members, as a better alternative than an expanded, but limited, non round-robin event. This format is used in quite a few states, and is easier to administer, though it suffers from the possible lack of direct confrontation by the top contenders.

Having said all that, I will end by agreeing that any system can work. A ten player Swiss may prove to be quite interesting, and any controversy it generates may be refreshing.

One final question however: The Closed Playoff and qualifying procedures were, I believe, incorporated in the recently revised bylaws. Did the annual meeting membership vote suffice to change these, or does the board need to formally enact the bylaws changes?

Looking forward to seeing you all again, over the board.

- Bill Lynch



## From Sherwood Moore

In response to the expanded State Closed, I would support adding two qualifiers to [both] the Grand Prix and the

State Open. However, I have an alternate proposal, and a need to express my feelings about the Grand Prix.

Until 1984, the Closed was seeded in the following manner. The reigning State Closed Champion, top Junior, top Grand Prix and first through third from the Montana Open. My alternative is to add one additional qualifier to both Grand Prix and State Open, and seed the top Junior and Senior players by ratings.

Now, before you throw my idea out, let's explore the reasoning. We are striving for the strongest tournament possible. Has this consistently happened? No. Why not? Because some of our stronger players have been tripped up at the Open. So why should the top Senior and Junior be seeded? Because it presents the opportunity for two strong players to participate in the Closed. They may not be able to afford to travel to compete in the Grand Prix, and this would serve as an equalizer for them.

As for the expanded Closed, I have reservations as to its practicality. In the past, the six qualifiers have had difficulty in choosing a site and time to hold the Closed. I do not believe ten [qualifiers] will make this any easier. Also, as a director, I do not envy the director trying to make pairings for the lower score groups in rounds four and five. It will be most difficult to conduct a Swiss with such a small number. I think Igor put it best when he asked Dr. Frankenstein, "You created a what?"

One last issue. Over the last four years, the Grand Prix has become a football for several members. Each group tries to adjust it to give them an advantage over the others. The fear that someone may hold too many tournaments, and so limiting the number of Grand Prix events was one [example]. Holding a tournament with multiple sections, so the upper section would have more Grand Prix points is another. According to the MCA bylaws, there were no allowances for multiple sections in the Grand Prix. I know. I helped write them.

So, I am asking the MCA officers to please make sure that the rules you change will benefit the majority of members, and not a select few.

Thank you for considering my points.

Respectfully yours,

Sherwood Moore



## From Bill McBroom

Due to another commitment, I missed the 1994 State Open. Rather than wait an entire year, I would like to share some thoughts with the readers of MCN :

### I. THE STATE CLOSED

Since we have gone to a closed format to identify the State Champion, it has not always been easy to arrange a

time when all who have qualified can attend. Arrangements are likely to prove even more difficult when ten players will be involved. Past practice has consisted of arranging the time and site of the State Closed at what amounts to the last minute. The consequence has been that the tournament which produces the State Champion is essentially a qualifiers-only affair.

Let MCA, as an association, sponsor two tournaments per year: the State Open and the State Closed, the latter with an open satellite section. Arrangements for both should be made well in advance and announced so that not only qualifiers and potential qualifiers could clear their calendars, but also so others could be on hand when the championship play takes place. Please note carefully that this suggestion precludes last minute changes to accommodate someone's schedule. With the site and time of the State Closed arranged in advance of the State Open, it would be up to qualifiers to keep the date open or defer to an alternate.

The Closed could be held in conjunction with another tournament (like the Midsummer Open or Chinook Open--as in a few times past--or with the August Billings tournament, should that prove to be an annual event). Or, the State Closed and satellite could be its own tournament, scheduled for June or September--months not traditionally associated with regular tournaments.

### II. CONDUCTING MCA BUSINESS

There are some inherent problems with an organization that has but a single business meeting per year. For one, the officers tend to be transients with the MCN editors (Les Brennan and Bill Lynch before him) doing yeomen's work trying to hold things together. The revision of the constitution and bylaws undertaken during Paul Motta's presidency corrected some problems and inadvertently introduced others. While I do not call for a wholesale revision, allow me to make some distinctions, and to offer a view of the desirable.

The purposes of articles of organization and bylaws are not the same. The former indicate the purpose of an organization and address any items required for some legal status (such as being a nonprofit organization). Articles of organization are deliberately and properly made hard to change. Bylaws, in contrast, represent the rules an organization adopts to conduct its business. Bylaws are generally relatively easy to change.

All of the business conducted need not require changes in the bylaws. An effective organization typically adopts articles of organization that are almost never changed, has bylaws that are in place to facilitate business, and conducts business in an organized fashion without frequent changes of the rules. (cont. p 12)

# UPCOMING EVENTS

ALL MCA GRAND PRIX EVENTS WILL BE ADVERTIZED AS:

AN MCA GRAND PRIX EVENT

## BEARTOOTH MOUNTAIN OPEN SEPT. 17, 18, 1994 \$500 GUARANTEED (\$900 b/40)

Cooke City Firehall, Cooke City, Montana. 6 Round Swiss. Time control: G/1 (Full K). Rounds: 9:00a.m., 1:00p.m., 3:30p.m. 7:00p.m., 9:00a.m., 12:00p.m. Registration: 8:00 - 8:45a.m. Sept. 17. EF \$20 if received by 9/12, \$25 at site. Juniors 50% \$\$ G \$500 - 1st \$150, 2nd \$50 Top A \$50, Top B \$50, Top C \$50, Top D \$50, Top E \$50, Biggest Upset \$50 (Both players must have nonprovisional ratings). MCA membership required (\$6), other states OK. No smoking, No computers. ALSO: Hypoxia Blitz Friday night, 9/16 Winner takes all! (G/5) Starts at 9:00p.m. at the All Seasons Hotel. EF: \$5 No memberships required. All Seasons Hotel: (406) 838-2251 rooms: \$50 double. For Information / Registration: John Kennedy, Box 2307, Colstrip, MT 59323 (406) 748-4449

## 94-95 MONTANA POSTAL CHESS CHAMPIONSHIP TO BEGIN OCTOBER 1, 1994

Entry deadline: September 30, 1994. Entry Fee: \$5.00 Time control: 10 moves / 30 days retention time. Sections to be arranged in accordance with number of entries (usually just one section). Handsome plaque goes to winner. Information / Entry fees: Sherwood Moore, 453 Minnesota, Missoula, MT 59802 (406) 728-1695 Try it, you'll like it!

## BOBCAT OPEN OCTOBER 1, 1994

Room 276, Student Union Building, MSU Bozeman, MT. 4 SS. Time control: G/90. Rounds: 9am, 12:30pm, 3:45pm, 7:30pm. Reg: 8:15 - 8:45am Oct 1st EF \$8 if rec. by 9/28 (No phone entries) \$10 at site (juniors 1/2) Prizes: \$ per entries. MCA memb. reqd. (\$6) O.S. OK. NS, NC, W. For advance reg. / info: Steve Scarff 214 S. Church Ave. Bozeman, MT 59715 (406) 586-4479

## ANDROMEDID ACTION OPEN OCTOBER 2, 1994

Room 276, Student Union Building, MSU Bozeman, MT. 5 SS. Time control: G/30 (Full K). Rounds: 9am, 10:15am, 11:30am, 1:15pm, 2:30pm. Reg: 8:15 - 8:45am Oct 2nd. EF \$8 if rec. by 9/28 (No phone entries) \$10 at site (juniors 1/2). Prizes: \$ / entries. MCA memb. reqd. (\$6) O.S. OK. NS, NC, W. Adv. reg. / info: Steve Scarff 214 S. Church Ave. Bozeman, MT 59715 (406) 586-4479

## CHINOOK OPEN OCT. 15, 16, 1994



AN MCA GRAND PRIX EVENT



College of Great Falls, building #1, rooms 206 & 207 (building located closest to corner of 23rd & 13th Ave. So.) 5 Round Swiss. Time control: 45/2, 20/1. Rounds: 10:00am, 2:00pm, 7:00pm, 9:00am, 1:00pm. Registration: 8:30-9:30am Oct. 15. EF: \$15 if by 10/13, \$20 at site. Prizes: 1st place \$75, \$25 to top in each division, \$25 for biggest upset. MCA membership required (\$6), other states OK. For advance registration or information, contact: Thad Suits, 2015 4th Ave N Great Falls, MT 59401 (406) 453-6160

## UCCC TURKEY OPEN NOVEMBER 5, 6, 1994 \$255 GUARANTEED

Room 362, Social Science Building, University of Montana, Missoula, MT. 5 Round Swiss. Time control: G/2, Rounds: 9:00am, 2:00pm, 7:00pm, 8:30am, 1:00pm. Registration: 8:00 - 8:45am Nov. 5. EF \$15 if rec. by 11/3, \$20 at site. \$\$ G 255 - 1st \$100 \$50, 3rd \$25, <1900 \$25 - \$15, <1700 \$15 - \$10, <1500 \$10 - \$5. Plaque for Biggest Upset (Both players must have provisional rts). MCA membership required (\$6), other states OK. No smoking, No computers, Wheelchair accessible. For advance registration or info, contact: Sherwood Moore, 453 Minnesota, Missoula, MT 59802 (406) 728-1695



One change we might make (and it requires no formal change, as it is already called for in the bylaws) is to more closely adhere to *Robert's Rules of Order*. These rules are intended to facilitate the conducting of meetings in a fair and orderly manner. In order to afford full consideration of business, many organizations allow as new business only those items that have been placed on a previously published agenda. The intent is to avoid precipitous action.

We could adopt a practice of publishing an agenda in an *MCN* prior to the State Open and considering only those items during the business meeting. This need not keep things being considered on short notice as *Robert's Rules of Order* includes a provision to "suspend the rules for emergencies (taking a two-thirds majority of the quorum). More closely observing the rules of debate might also help. These include a limit on the amount of time a given member may speak and limiting debate to one turn per person per topic until all [those] wishing to speak have been heard.

### III. NONSPONSORED, NONSANCTIONED TOURNAMENTS

By defining the time controls needed to qualify for MCA Grand Prix tournaments, we have unwittingly created three classes of tournaments. The current articles and bylaws speak of MCA "sponsored" tournaments (those put on by the association--the State Open) and MCA "sanctioned" (those put on by others, but qualifying for MCA Grand Prix competition).

The recent Midsummer Open was neither of these, as it had time controls which precluded grand prix points under the new system and it is likely that some future tournaments will not conform to the new requirement.

What is the status of such tournaments? Should the organizers be obliged to demand MCA membership of participants on pain of exclusion from *MCN*? If MCA membership is not required by organizers, should the tournaments nonetheless be listed in *MCN* as a courtesy or should an advertising fee be required? Clearly, the new rules are likely to influence not only the policies of MCA and *MCN*, but also of those who organize tournaments in Montana.

- William H. McBroom



### From Romie Carpenter

In response to your open invitation for comments pertaining to the new State Closed format, following are some characteristics of the Swiss system our membership may wish to consider.

First and foremost, it should be recognized that by choosing the Swiss system in lieu of the round robin format, the integrity of the title "Montana State Champion" will be compromised somewhat, since some of the participants will invariably receive more favorable pairings than others. Also, the potential for having two or more co-champions is increased. Whether or not this is adequately compensated for by the desire to increase chess interest around the state is

something for the membership to decide.

Special consideration should be given to the fact that a ten-player, five-round Swiss will strain the pairing and color-allocation rules in the later rounds, requiring that some discretion be exercised by the tournament director, and due to the importance of the event, this has the potential to create arguments and ill feelings - especially if the TD is also one of the contestants.

The question of time controls is also of significance. If the standard 40/2, 20/1 is used and should one of the games be extended, then the pairings and start times of many, if not all of that day's remaining games will be delayed. On the other hand, if a sudden-death time control is used, any claim of a draw due to "insufficient losing chances" will transfer control of the game's outcome to a third party.

Hopefully, by identifying these details, at least some of the potential problems with next year's State Closed can be addressed, thus increasing the enjoyment of all concerned.

Sincerely,

Romie G. Carpenter



## Montana Chess News

594012059 1694 09/02/94  
 NOTIFY SENDER OF NEW ADDRESS  
 SUIT125  
 2015 4TH AVE N  
 GREAT FALLS MT 59401-2733

