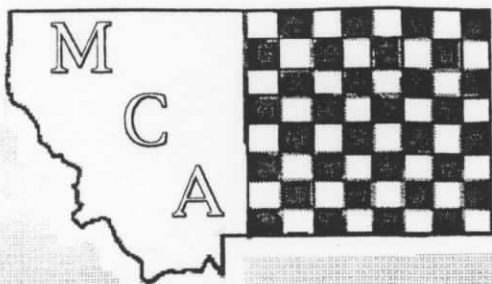




MONTANA CHESS NEWS

Montana Chess News is published by the MONTANA CHESS ASSOCIATION, an affiliate of the U. S. CHESS FEDERATION Promoting Chess Excellence by Education and Competition Membership / Subscription = \$6 / yr regular, \$3 / yr junior



Editor - Les Brennan PO Box 2404
Colstrip, MT 59323 (406) 748-2154

JUST SAY NOWAK

MCA CHAMPION WINS UCCC FIRST SUMMER
OPEN AND MIDSUMMER OPEN WITH CRUSHING AUTHORITY
AND GIVES 31 BOARD SIMUL DEMO AS TITLE DEFENSE DRAWS NIGH

SHUGHART TOPS "SECOND SUMMER"

JOHANSSON WINS PRAIRIE CUP

UCCC MIDSUMMER OPEN

By WILLIAM H. McBROOM

Greg Nowak won the UCCC Midsummer and \$80.00 worth of Chess Digest gift certificates with a perfect score of 5 points. Since his opponents included two experts, he is probably securely in the master range (based on the 2187 rating in the June Supplement).

There was a three-way tie for second through fourth place among Neil Markovitz (who joined us from Grangeville, ID), Dan McCourt and Steve Fabian from Spokane. The under-1900 class prize was also involved, so they each ended up with \$28.33 in gift certificates. David Duke won \$20 in certificates for the best-under-1700

performance, and Hardy Grover got his entry fee back with \$15 in certificates for best under 1500. Sherwood Moore upset Romie Carpenter in round one, winning the biggest-upset plaque. Sherwood's even score looks even better when you realize that all of his opponents were higher rated (his performance rating was on the order of 250 points higher than his actual rating).

Among the new players were Jan Johansson and his son Jonni Ammond. Jan, who lives in Gardner, MT, is a postal master with a provisional expert OTB rating. (Because Jan's rating is

MCA GRAND PRIX POINT STANDINGS

As of the Prairie Cup
8/22/93

1. Johansson...17.50
2. Nowak.....11.04
3. D. McCourt..9.936
4. Duke.....8.28
5. Thompson...7.838
6. Quimby.....7.838
7. Z. Mayer.....6.455

(Grand Prix formula
explained on p. 3)

provisional, Steve Fabian will have to settle for a fistful of rating points, but not an upset prize for beating him in round two).

The time control for this event was

G/2. There were a number of time forfeits with associated scrambles and incomplete scoresheets (players were not required to record their moves after their clocks showed 5:55). Since rounds

started promptly on time, players sauntering in the playing hall several minutes late found their clocks running - time some could have used at the end.



UCCC 1ST SUMMER OPEN



ROUND ROBIN RESULTS

	NAME	RTG	1	2	3	4	TOT
1	Nowak, Gregory W	2187		1	1	1	3
2	McBroom, William H	1659	0		1	1	2
3	Moore, Sherwood	1549	0	0		1	1
4	Gisselbeck, Donald	1286	0	0	0		0

UCCC MIDSUMMER OPEN RESULTS

	NAME	RTG	R1	R2	R3	R4	R5	TOT
1	Nowak, Gregory W	2187	W 12	W 15	W 4	W 2	W 7	5
2	Markovitz, Neil	2089	W 6	W 3	W 10	L 1	D 5	3.5
3	McCourt, Daniel J	1740	W 16	L 2	W 13	D 5	W 10	3.5
4	Fabian, Steve	1700	W 18	W 5	L 1	D 10	W 8	3.5
5	Johansson, Jan	2050 est	W 17	L 4	W 7	D 3	D 2	3
6	Duke, David A	1579	L 2	L 10	W 16	W 13	W 9	3
7	Motta, Paul S	2014	W 13	D 9	L 5	W 11	L 1	2.5
8	Carpenter, Romie G	1817	L 10	D 16	W 12	W 17	L 4	2.5
9	Schwartz, Michael	1650 est	W 14	D 7	D 15	.5 BYE	L 6	2.5
10	Moore, Sherwood	1549	W 8	W 6	L 2	D 4	L 3	2.5
11	Grover, Hardy	1434	L 15	W 12	W 17	L 7	D 14	2.5
12	Yunker, Gary	1628	L 1	L 11	L 8	W 16	W 18	2
13	Rajala, Robert	1558	L 7	W 14	L 3	L 6	W 17	2
14	Ammond, Jonni	UNR	L 9	L 13	W 18	D 19	D 11	2
15	Shughart, David W	1800	W 11	L 1	D 9	WITH	DREW	1.5
16	Willafor, Lloyd	1352	L 3	D 8	L 6	L 12	W 19	1.5
17	Allwardt, Lewis	1563	L 5	W 18	L 11	L 8	L 13	1
18	Jacobs, Carl C.	1200	L 4	L 17	L 14	BYE	L 12	1
19	Gisselbeck, Donald	1286	LATE	ENTRY		D 14	L 16	0.5

MIDSUMMER OPEN RESERVE SECTION ROUND ROBIN

	NAME	RTG	1	2	3	TOT
1	McCourt, Chris D	1157		1	1	2
2	Duke, Evangelina	UNR	0		1	1
3	Duke, Rebecca	UNR	0	0		0

THE PRAIRIE CUP, COLSTRIP

Thanks to the generous prize fund provided by Montana Power Company, there was a cash prize within the grasp of just about everyone present at Colstrip's Prairie Cup. MPC donated \$300 for prizes, and the players -- Though not Legion -- were rewarded generously for excellence.

Jan Johansson received \$100 and a beautiful trophy for a clear first place. 2nd & 3rd place prize

monies were combined and divided equally between John C. Thompson and Chris Quimby (a new MCA member from the Roundup area), amounting to \$50 each.

The Best-Under-1800 prize of \$25 was split evenly between Les Brennan and Arman Goplen (Chris Quimby Had already received a greater value money prize).

The two under-1400 players fought to a draw (perpetual check)

to result in their splitting the U-1400 \$25 prize.

Then in the last round, Eriel Mayer had a chance to win the upset-of-the-year award by being a bishop and two pawns up on Chris Quimby. Well...Chris finessed a trap on Eriel's queen several moves later and the possible 650-point upset quickly languished.

John Thompson said he played one of the most enjoyable games of his career at this tournament against Jan Johansson, whom John considers under-rated, judging by the high level of understanding Jan has of the game. Their game is annotated by John in the games section for those wishing to know the mind of the master.

Arman Goplen took home the biggest-upset trophy for a pretty win against Mayer's Grob.

(His win over Zygmund was an upset of 369 points).

THE PRAIRIE CUP RESULTS

	NAME	RTG	R1	R2	R3	R4	TOT
1	Jan Johansson	2046	W 9	W 6	W 2	D 4	3.5
2	John C. Thompson	2200	W 5	W 3	L 1	W 7	3
3	Chris Quimby	1760	W 7	L 2	W 6	W 8	3
4	Zygmund Mayer	2088	L 6	W 9	W 5	D 1	2.5
5	Les Brennan	1752	L 2	W 8	L 4	W 9	2
6	Arman Goplen	1719	W 4	L 1	L 3	BYE	2
7	Jonni Ammond	1355	L 3	BYE	D 8	L 2	1.5
8	Eriel Mayer	1126	BYE	L 5	D 7	L 3	1.5
	John Kennedy	1516	L 1	L 4	BYE	L 5	1

UCCC 2nd SUMMER OPEN RESULTS

	NAME	RTG	R1	R2	R3	TOTAL
1	Shughart, David	1800	D-3	W-4	W-2	2.5
2	Duke, David	1579	W-4	W-3	L-1	2
3	Moore, Sherwood	1549	D-1	L-2	W-4	1.5
4	Gisselbeck, Don	1260	L-2	L-1	L-3	0

HOW TO CALCULATE GRAND PRIX POINTS



Grand Prix Formula : $(N/5) \times (11 - P) \times C$ where

N = no. of rounds

P = place in order among Montana Resident Players (the average of tied places)

C = average rating of all players in the event / 1500

For the purpose of determining the average rating of all players in an event, the ratings used by the director for pairings will be used, except players without ratings will be assigned a number equal to :

**Average rating of RATED players + $(W-L) \times 100$
here W = wins and L = losses (of the unrated player)**

NOTE: Only positive scores earn Grand Prix points

RECENT GAMES

Nowak 2187 **Gisselbeck 1286**
UCCC 1st Summer Open
 6/10/93 **Round 1**
Benko Opening

1. g3 Nf6 2. Bg2 e5 3. c4 Bc5 4. Nc3 O-O 5. d3 d6 6. Nf3 Nc6 7. O-O h6 8. b3 Be6 9. Na4 Bd4 10. Rb1 Qd7 11. e3 Bc5 12. Bb2 Bg4 13. Qd2 e4 14. Ne1 Qf5 15. Bf6 Qf6 16. Be4 Bh3 17. Bg2 Bg2 18. Ng2 Ne5 19. f4 Nd7 20. b4 Bb6 21. Nc3 Rfe8 22. Nd5 Qe6 23. f5 Qe5 24. Rf4 c6 25. Re4 Qf5 26. Ne7 Re7 27. Re7 Ne5 28. Rf1 Qd3 29. Qd3 Nd3 30. Rff7 Ne5 31. Rg7 Kf8 32. Rh7 Re8 33. Rb7 Nc4 34. Rh8 Mate

McBroom 1659 **Moore 1549**
UCCC 1st Summer Open
 6/10/93 **Round 1**
Torre Attack

1. d4 Nf6 2. Nf3 b6 3. Bg5 Bb7 4. c3 e6 5. Nbd2 Be7 6. Bd3 d5 7. O-O O 8. Ne5 Nbd7 9. Ndf3 c5 10. c3 h6 11. Nd7 Qd7 12. Ne5 Qd8 13. Bh4 Ne4 14. Be7 Qe7 15. Rc1 Rfc8 16. Ng4 Nf6 17. Ne5 Nd7 18. f4 a5 19. Rf3 Nf6 20. Rh3 cd4 21. ed4 Ba6 22. Bb1 b5 23. Qf3 b4 24. Ng4 Ng4 25. Qg4 Qf6 26. Re1 bc3 27. bc3 Rc3 28. Rc3 Qd4 29. Rce3 Rb8 30. Qd1 Qf4 31. Bd3 Bd3 32. Qd3 Rb2 33. Rf1 Qc7 34. h3 Ra2 35. Qb5 Qc2 36. Rg3 Qc7 37. Rgf3 Kf8 38. Rf7 Qf7 39. Qb8 Black resigns.

Gisselbeck 1286 **Moore 1549**
UCCC 1st Summer Open
 6/17/93 **Round 2**
Ruy Lopez

1. e4 e5 2. Nf3 Nc6 3. Bb5 a6 4. Ba4 Nf6 5. O-O Be7 6. Re1 b5 7. Bb3 O-O 8. d4 ed4 9. Nd4 Na5 10. e5 Nb3 11. ef6 Bf6 12. Nb3 Bb7 13. N1d2 Re8 14. Re8 Qe8 15. Nf3 Bf3 16. Qf3?? (oops!) Qe1 Mate.

Nowak 2187 **McBroom 1659**
UCCC 1st Summer Open
 6/17/93 **Round 2**
Benko Opening

1. g3 Nf6 2. Bg2 e6 3. d3 d5 4. Nc3 Be7 5. Nf3 b6 6. O-O Bb7 7. e4 de4 8. Ng5 h6 9. Nge4 Ne4 10. Ne4 Nc6 11. Bd2 O-O 12. a4 a5 13. Qh5 f5 14. Qg6 Ne5 15. Qe6 Nf7 16. Nf6 Bf6 17. Bb7 Rb8 18. Bd5 Bb2 19. Rab1 Qf6 20. Rb2 Qb2 21. Qc6 Qe5 22. Qc4 Rbd8 23. Be6 Rd4 24. Qb3 Qe2 25. Bc3 Rd6 26. Re1 Qh5 27. Re5 Qd1 28. Kg2 Re6 29. Re6 f4 30. Rg6 f3 31. Kh3 Qf1 32. Kh4 Black resigns.

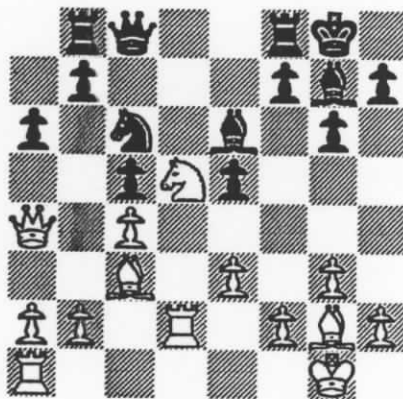
Moore 1549 **Nowak 2187**
UCCC 1st Summer Open
 6/24/93 **Round 3**
Nimzo-Larsen Attack

1. Nf3 Nf6 2. b3 g6 3. Bb2 Bg7 4. c4 O-O 5. Nc3 d6 6. g3 e6 7. Bg2 c6 8. O-O e5 9. e4 c5 10. d3 Nc6 11. h3 Rb8 12. Qe2 a6 13. Rfd1 b5 14. Bc1 Nd4 15. Nd4 cd4 16. Nb1 Nd7 17. Nd2 Nc5 18. Nf3 Bb7 19. Ne1 Qe8 20. Ba3 f5 21. Bc5 dc5 22. Rac1 b4 23. Nf3 Bh6 24. Rb1 fe4 25. de4 a5 26. Ne1 Ra8 27. Nd3 Qe7 28. Rf1 a4 29. Ra1 Rf6 30. Kh2 Rfa6 31. Qb2 Qd6 32. f4 Bg7 33. fe5 Be5 34. Ne5 Qe5 35. Rf4 ab3 36. Qb3 Ra3 37. Qb2 g5 38. Rf3 Rf3 39. Bf3 Ra3 40. Qg2 Re3 41. Rd1 h5 42. Rd2 h4 43. Re2 Qg3 44. Qg3 hg3 45. Kg3 Re2 46. Be2 Be4 47. Bd1 Kg7 48. h4 gh4 49. Kh4 Bb1 50. Bb3 d3 51. Kg3 d2 52. Kf4 Ba2 53. Bd1 b3 54. Ke3 b2 White resigns.

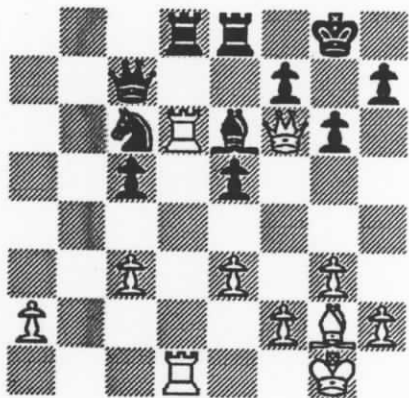
Carpenter 1817 **Moore 1556**
UCCC Midsummer open
 7/17/93 **Round 1**
English Opening

1. c4 Nf6 2. g3 g6 3. Bg2 Bg7

4. Nc3 c5 5. e3 e5 6. Nge2 Nc6 7. O-O O-O 8. d4 d6 9. Nd5 Ne7 10. de5 de5 11. Nec3 Rb8 12. Qa4 Nfd5 13. Nd5 a6 14. Rd1 Nc6 15. Bd2 Be6 16. Bc3 Qc8 17. Rd2? (the bishop is trapped, inviting black to advance the b pawn)



Re8 18. Rad1 b5 19. cb5 ab5 20. Qh4 b4 21. Nf6 Bf6 22. Qf6 bc3 23. bc3 Qc7 24. Rd6 Rbd8? (White gets his piece back now, but ends up in a very vulnerable position in extreme time trouble)



25. Bc6 Rd6 26. Rd6 Qd6 27. Be8 Qd1 28. Kg2 Bd5 29. e4 Be4 30. f3 Qe2 31. Kh3 Qf1 32. Kh4 Bd5 33. a4 Qc4 34. Kg5 Qc3 35. Kh6 Qd2 36. f4 Qh2 37. Kg5 Qg3? (37...Qh5 Mate) 38. Kh6 Qh3 39. Kg5 Qh5 Mate.

(Thus Sherwood earns his Biggest Upset award. Fun game!)

Nowak 2187 G. Younker 1628
UCCC Midsummer Open
7/17/93 Round 1
Benko Opening

1. d5 2. Nf3 e6 3. Bg2 Nf6 4. O-O Bd6 5. c4 c6 6. Qc2 Nbd7 7. b3 Ne5 8. d4 Ng6 9. Nc3 O-O 10. Rb1 b6 11. e4 de4 12. Ne4 Ne4 13. Qe4 Bb7 14. h4 Qc7 15. h5 c5 16. Qd3 Ne7 17. Ng5 g6 18. Bb7 Qb7 19. Bb2 Nf5 20. Ne4 Be7 21. Qf3 Qc7 22. dc5 f6 23. hg6 hg6 24. Qg4 Kf7 25. cb6 ab6 26. a4 Rh8 27. Kg2 Qc6 28. Qf3 Qc7 29. Rh1 e5 30. Rbe1 Nd4 31. Bd4 ed4 32. Ng5! Black resigns.

Shughart 1800 Nowak 2187
UCCC Midsummer Open
7/17/93 Round 2
French Defense

1. e4 e6 2. d4 d5 3. Nd2 Nf6 4. e5 Nfd7 5. Ngf3 c5 6. c3 Nc6 7. Bd3 cd4 8. cd4 f6 9. O-O f5 10. Nb3 Be7 11. Ng5 Bg5 12. Qh5 g6 13. Qg5 Qg5 14. Bg5 Kf7 15. Rac1 a6 16. Nc5 Nc5 17. Rc5 Bd7 18. Rfc1 Rhc8 19. Be3 f4 20. Bf4 Nd4 21. Rc7 Ke8 22. a4 Rc7 23. Rc7 Rb8 24. h5 Kd8 25. Rc3 Bb5 26. Bg5 Kd7 27. Bb5 ab5 28. Kf1 Ra8 29. a3 b4 30. ab4 Ra1 31. Rc1 Rc1 32. Bc1 gh5 33. f4 Kc6 34. Kf2 Kb5 35. Ke3 Nf5 36. Kf3 Kc4 37. g4 hg4 38. Kg4 Kd3 39. b3 Kc2 40. Ba3 b5 41. Kg5 d4 42. Kf6 d3 43. Ke6 Nd4 44. Kd5 d2 45. Kd4 d1=Q 46. Kc5 Qd7 47. f5 Qf5 48. Kd6 h5 49. e6 h4 50. e7 Qc8 51. Bc1 Kc1 52. Ke5 h3 53. Kd6 h2 54. e8=Q Qe8 55. Kc7 h1=Q White resigns.

Motta 2014 Schwartz 1635
UCCC Midsummer Open
7/17/93 Round 2
Pirc Defense

1. d4 d6 2. Nc3 g6 3. e4 Bg7 4. Bc4 e6 5. Be3 Nd7 6. Nge2 a6 7. a4 b6 8. Qd2 Bb7 9. f3 Qe7 10. Rd1 h5 11. Bb3 Bh6 12. Nf4 O-O-O 13. Qe2 Nb8 14. O-O Bf4 15. Bf4 g5 16. Be3 Nh6

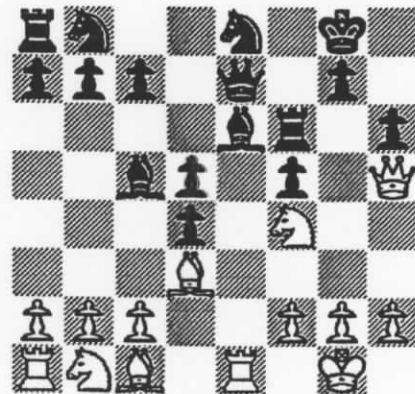
17. Qd2 Rdg8 18. Rfe1 Rg6 19. Bc4 Nc6 20. Qe2 Draw agreed.

Fabian 1700 Johansson 2050
UCCC Midsummer Open
7/17/93 Round 2
Alekhine's Defense

1. e4 Nf6 2. e5 Nd5 3. d4 d6 4. ed6 cd6 5. Nf3 g6 6. Be2 Bg7 7. c4 Nb6 8. O-O Nc6 9. h3 O-O 10. Re1 e5 11. d5 Nb4 12. Nbd2 Bf5 13. Nf1 Nc2 14. Ne3 Na1 15. Nf5 gf5 16. Bg5 Qc7 17. Qa1 e4 18. Nh4 Qc8 19. Qc1 Re8 20. b3 Kh8 21. Bh5 Qd7 22. Kh1 Rac8 23. Qf4 Re5 24. g4 fg4 25. Bf6 Rh5 26. Re4 Rf8 27. hg4 Rh4 28. Bh4 Black's flag falls.

Johansson 2046 Motta 2014
UCCC Midsummer Open
7/17/93 Round 3
Center Game

1. e4 e5 2. d4 ed4 3. Nf3 Bc5 4. Bb5 Nf6 5. O-O O-O 6. e5 Ne8 7. Ng5 d5 8. Qh5 h6 9. Bd3 f5 10. Nh3 Qe7 11. Nf4 Rf7 12. e6 Be6 13. Re1 Rf6

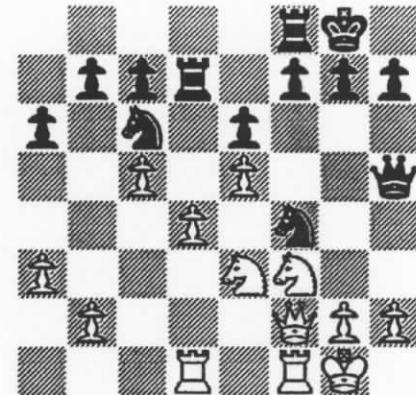


14. Nd5 Qd7 15. Nf6 Nf6 16. Qg6 Qf7 17. Bf5 Black resigns

D.McCourt1740 Johansson 2050
UCCC Midsummer Open
7/18/93 Round 4
Alekhine's Defense

1. e4 Nf6 2. e5 Nd5 3. d4 d6 4. c4 Nb6 5. f4 de5 6. fe5 Nc6 7. Be3 Bf5 8. Nf3 Nb4 9. Na3 e6 10. Be2 Be7

11. O-O O-O 12. Qd2 Rc8 13. Bg5 a6 14. c5 N6d5 15. Nc4 Be4 16. Be7 Qe7 17. a3 Nc6 18. Ng5 Bg6 19. Nf3 Rcd8 20. Rad1 Bh5 21. Ne1 Qh4 22. Bh5 Qh5 23. Nf3 Rd7 24. Qf2 Nf4 25. Ne3



Nd4?? 26. Rd4 Rd4 27. Nd4 Nd3 28. Qd2 Ne5 29. Nf3 Nc6 30. Qc3 Rd8 31. b4 Draw agreed.

Markovitz 2089 Nowak 2187
UCCC Midsummer Open
7/18/93 Round 4
Bird's Opening

1. f4 Nf6 2. Nf3 c5 3. b3 Qc7 4. e3 g6 5. Bb2 Bg7 6. Be2 O-O 7. O-O d6 8. Qe1 Bg4 9. h3 Bf3 10. Bf3 Nc6 11. Nc3 e6 12. Qh4 d5 13. f5 Qd8 14. fg6 fg6 15. Ne2 e5 16. g4 Qd6 17. g5 Nd7 18. Qg3 Ne7 19. Bg4 Nf5 20. Bf5 gf5 21. d4 cd4 22. ed4 Rac8 23. de5 Qa6 24. c4 dc4 25. Bd4 cb3 26. Qb3 Kh8 27. Qb2 Qg6 28. h4 Qh5 29. Rf4 Nc5 30. e6 Ne6 31. Bg7 Ng7 32. Ng3 Qg6 33. Qb7 h6 34. Qb2 hg5 35. h5 Qb6 36. Qb6 ab6 37. Rb4 Rc6 38. Rf1 f4 39. Ne4 Nh5 40. Rb5 Rg8 41. Kf2 Rc2 42. Kg1 Re2 43. Nc3 Re6 44. Rf2 Kh7 45. Rh2 Rh6 46. Ne4 f3 White's flag falls.

Duke 1579 Schwartz 1631
UCCC Midsummer Open
7/18/93 Round 5
English Opening

1. c4 Nf6 2. Nc3 d6 3. g3 g6 4. Bg2 Bg7 5. Nf3 O-O 6. O-O c6 7. b3 e5

Duke / Schwartz continued

8. d3 Qa5 9. Bd2 Qc7 10. Rb1 Nbd7
11. b4 Re8 12. Ne1 Nf8 13. Nc2
Rb8 14. b5 Bd7 15. a4 Ne6 16. Nb4
Rec8 17. Qc2 Nd4 18. Qa2 c5 19.
Nbd5 Nd5 20. Nd5 Ne2 21. Kh1 Qd8
22. Be3 Nd4 23. Bd4 ed4 24. Rfe1
Be6 25. Re2 Bd5 26. Bd5 Qd7 27.
Rbe1 Re8 28. Re8 Re8 29. Re8 Qe8
30. Bb7 Qe1 31. Kg2 Qd1 32. a5 d5
33. Bd5 Qd3 34. a6 Be5 35. Qa5
Qf5 36. Qd8 Kg7 37. b6 Qf6 38. Qf6
Bf6 39. ba7 d3 40. Bf3 Black
resigns.

**Nowak 2187 Motta 2014
UCCC Midsummer Open
7/18/93 Round 5
Queen's Pawn Game**

1. Nf3 Nc6 2. d4 d5 3. e3 Bg4 4.
Be2 e6 5. Ne5 Be2 6. Qe2 Ne5 7.
de5 c5 8. O-O Qc7 9. e4 Rd8 10.
ed5 Rd5 11. Bf4 a6 12. Nc3 Rd4 13.
Ne4 Qc6 14. Rfe1 Qb5 15. Qf3 Be7
16. Nd6 Bd6 17. ed6 Nf6 18. Be5
Nd7 19. Bd4 cd4 20. a4 Qb6 21. a5
Qd6 22. Qg3 Qg3 23. hg3 Nb8 24. c3
Ic6 25. cd4 Nd4 26. Red1 Nc6 27.
Rac1 Ke7 28. Rc5 Rd8 29. Rd8 Kd8
30. Kf1 Kd7 31. Ke2 Kd6 32. Rc3
Na5 33. Rc8 Nc6 34. Rf8 Ke7 35.
Rc8 Nd8 36. Rc3 Nc6 37. Kd3 Kd7
38. Kc4 b6 39. Ra3 Ne5 40. Kd4
Nc6 41. Kc3 a5 42. Kc4 Nb4 43.
Kb5 Nd5 44. Rd3 Kc7 45. Rd2 Kb7
46. g4 Nc7 47. Kc4 Nd5 48. g5 Kc6
49. Kb3 Black's flag falls.

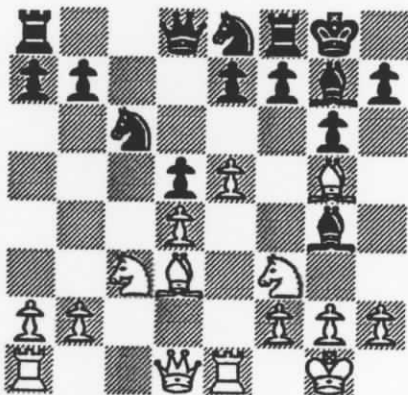
**Johansson2050 Markovitz2089
UCCC Midsummer Open
7/18/93 Round 5
Closed Sicilian**

1. e4 g6 2. g3 Bg7 3. Bg2 c5 4. Nc3
Nc6 5. d3 d6 6. Bg5 h6 7. Be3 Nf6
8. h3 O-O 9. Qd2 Kh7 10. Nge2 Ne8
11. O-O Qa5 12. a4 Nd4 13. Nf4 Nc7
14. g4 e6 15. Qd1 Bd7 16. h4 Na6
17. h5 g5 18. Nh3 Nb4 19. Rc1 e5
20. b3 Nbc2 21. Rc2 Nc2 22. Qc2
Bg4 23. f3 Bh5 24. Nf2 Qd8 25. Bh3
Qg6 26. Nh1 a6 27. Ng3 b6

28. Bf5 Rb8 29. Qh2 Rh8 30. Qh3
Kg8 31. Nh5 Bf5 32. Qf5 Qc8 33.
Nd5 Qe6 34. Ra1 Qf5 35. Ne7 Kh7
36. Nf5 Bf8 37. Nf6 Kg6 38. Nd5
Rb7 39. b4 f6 40. Rb1 Rhh7 41.
Kg2 Rhd7 42. Bf2 Kf7 43. Nfe3 Be7
44. Kh3 Kg6 45. Nf5 Bd8 46. Ng3
h5 47. Nf5 Kf7 48. Be1 Ke6 49.
Ng3 Rh7 50. Bd2 g4 51. fg4 hg4 52.
Kg2 Rh3 53. Ne3 Rhh7 54. Ng4
Rbg7 Draw agreed.

**Shughart 1800 Moore 1549
UCCC 2nd Summer Open
7/8/93 Round 1
King's Indian Defense**

1. d4 Nf6 2. Nf3 g6 3. c4 Bg7 4.
Nc3 O-O 5. Bg5 c6 6. e4 d5 7. cd5
cd5 8. e5 Ne8 9. Bd3 (9. Qb3)
Nc6 10. O-O Bg4 11. Re1 (Now
watch the board explode with



fireworks!!) ... Nd4 12. Bg6 Nf3 13.
gf3 fg6 14. Nd5 Bf3 15. Ne7 Qe7
16. Be7 Bd1 17. Bf8 Bf8 18. Rad1
Ng7 19. Rd7 b6 20. e6 Nf5 21.
Red1 (21. Re5) a5 22. Rb7 Bc5
23. Rdd7 h6 24. a3 Re8 25. b4 ab4
26. ab4 Bb4 27. Rb6 Bf8 28. Kg2
h5 29. Kf3 Bc5 30. Ra6 Nd4 31.
Ke4 Ne6 32. Kd5 Draw agreed.

**Gisselbeck 1285 Duke 1579
UCCC 2nd Summer Open
7/8/93 Round 1
Closed Sicilian**

1. e4 c5 2. Nc3 Nc6 3. Nf3 g6 4.
Bc4 Bg7 5. O-O e6 6. d3 Nge7 7.
Be3 Nd4 8. Na4 Nf3 9. Qf3 b5

10. Bb5 Qa5 11. c4 a6 12. Nc3 ab5
13. cb5 d6 14. Rfd1 O-O 15. d4 cd4
16. Bd4 Rd8 17. Bg7 Kg7 18. e5 d5
19. a4 Qb4 20. Ra2 Bb7 21. Qf6
Kg8 22. Qf3 Nf5 23. g4 Nh4 24.
Qd3 Qg4 25. Qg3 Qh5 26. a5 d4! 27.
Ne4 Qd1 Mate.

**Gisselbeck 1285 Shughart 1800
UCCC 2nd Summer Open
7/15/93 Round 2
Ruy Lopez**

1. e4 e5 2. Nf3 Nc6 3. Bb5 a6 4.
Ba4 Nf6 5. O-O Be7 6. d3 O-O 7.
Nbd2 d5 8. Re1 Bg4 9. ed5 Qd5 10.
Bc6 bc6 11. Ne4 Ne4 12. Re4 f5 13.
c4 Qd6 14. Re1 Rad8 15. b3 e4 16.
de4?? Qd1 White resigns.

**Moore 1549 Gisselbeck 1285
UCCC 2nd Summer Open
7/22/93 Round 3
Colle System**

1. d4 d5 2. Nf3 Nf6 3. e3 e6 4. Bd3
Be7 5. Nbd2 O-O 6. O-O Nc6 7. c3
Qd6 8. e4 e5 9. de5 Ne5 10. Ne5
Qe5 11. Nf3 Qh5 12. ed5 Bd6 13.
Re1 Bg4 14. c4 Bf3 15. Qf3 Qh2 16.
Kf1 Qh1 17. Ke2 Rae8 18. Be3 Qh5
19. Rh1 Qf3 20. Kf3 h6 21. Rh3 Nh7
22. Rah1 f5 23. g3 Rf6 24. Kg2
Ref8 25. Bd4 R6f7 26. c5 Be7 27.
Bc4 Bf6 28. Rd1 Kh8 29. d6 Rd7 30.
Be6 Rdd8 31. dc7 Rde8 32. Bf5 Ng5
33. Bf6 gf6 34. Rh6 Kg8 35. Rg6
Kh8 36. Rd7 Ne6 37. Rh6 Kg8 38.
Bh7 Black resigns.

**Shughart 1800 Duke 1579
UCCC 2nd Summer Open
7/22/93 Round 3
Danish Gambit**

1. e4 c5 2. d4 cd4 3. c3 dc3 4. Bc4
cb2 5. Bb2 e6 6. Nf3 Bb4 7. Nbd2
Nf6 8. O-O O-O 9. e5 Bd2 10. ef6
Bh6 11. fg7 Bg7 12. Bg7 Kg7 13.
Qd4 Qf6 14. Qg4 Qg6 15. Qd4 Qf6
16. Qg4 Kh8 17. Bd3 Rg8 18. Qh5
Rg7 19. h4 Qe7 20. Ng5 f6 21. Nh7
Rh7 22. Bh7 Qh7 23. Qe8 Qg8 24.
Qh5 Kg7 25. Rac1 Qh7? 26. Qh7 Kh7

Shughart / Duke continued
 27. Rc8 a5 28. Rfc1 b5 29. R1c7 b4
 30. Rb7 Ra6 31. Rcb8 Kg6 32. g4 d5
 33. f4 Rd6 34. h5 Kh6 35. Rh8 Mate.

Quimby 1760 **Ammond 1355**
Prairie Cup
 8/21/93 **Round 1**
Queen's Gambit Accepted

1. d4 d5 2. c4 dc4 3. Nf3 Nc6 4. e3
 e6 5. Bc4 Bb4 6. Nc3 Nge7 7. O-O
 Bc3 8. bc3 O-O 9. e4 Ng6 10. e5
 Nh4 11. Bd3 Nf3 12. Qf3 Qd5 13.
 Qg3 g6 14. Bg5 b6 15. Bf6 h5 16.
 Bg6 Qg2 17. Qg2 Black resigns.

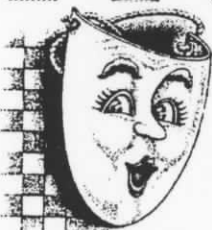
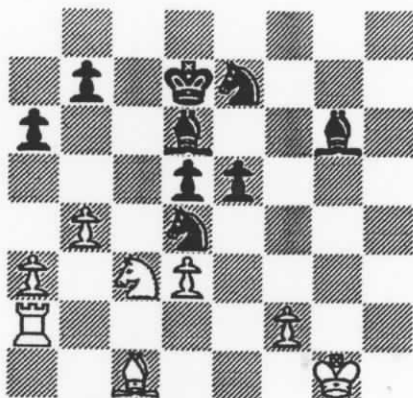
Brennan 1752 **Thompson 2200**
Prairie Cup
 8/21/93 **Round 1**
Bishop's Opening

1. e4 e5 2. Bc4 Nf6 3. Nf3 Ne4 4.
 Nc3 Nf6 5. Ne5 d5 6. Be2 d4 7. Nb1
 Qd5 8. Nf3 Bd6 9. d3 Bg4 10. h3
 Bh5 11. O-O Nc6 12. Nbd2 O-O 13.
 Nb3 Rfe8 14. Nfd4?? Nd4 15. Nd4
 Qd4 16. Bh5 Qe5!! (oops! So
 t's why I was able to win
 John's d4 pawn - Les) 17.
 Bf7 Kf7 18. f4 Qe2 19. Bd2 Bc5 20.
 Kh2 Rad8 21. Qc1 Be3 22. Be3 Re3
 23. b3 Rd5 24. f5 Rc5 25. c4 Qd3
 26. Qa3 Rf5 27. Qa7 Rf1 28. Rf1
 Rh3 29. gh3 Qf1 30. Qb7 Qf4 31.
 Kg1 Qg3 32. Qg2 Qg2 33. Kg2 Ke6
 34. Kf3 Ke5 35. a4 Nd7 36. Ke3 c5
 37. a5 Nb8 38. h4 g6 39. Kd3 Na6
 40. Ke3 h6 41. Kf3 Kf5 42. Kg3 g5
 43. hg5 hg5 44. Kf3 g4 45. Ke2 Kf4
 46. Kf2 g3 47. Ke1 Kf3 48. Kf1 g2
 49. Kg1 Kg3 50. b4 cb4 51. c5 b3
 White resigns.

Z. Mayer 2088 **Goplen 1719**
Prairie Cup
 8/21/93 **Round 1**
The Grob

1. g4 d5 2. Bg2 e5 3. h3 Bc5 4. e4
 c6 5. ed5 cd5 6. Qe2 Nc6 7. Nf3 Bd6
 8. Nc3 Be6 9. d3 Nge7 10. O-O h6
 11. a3 Qd7 12. Re1 f5 13. gf5 Bf5

14. Nb5 Bb8 15. Nh4 Bh3 16. Qh5
 g6 17. Ng6 Bg4 18. Bh3 Bh5 19.
 Bd7 Kd7 20. Nh8 a6 21. Nc3 Bd6
 22. Nf7 Bf7 23. Bh6 Rh8 24. Bc1
 Bh5 25. Kg2 Nd4 26. Rg1 Rg8 27.
 Kf1 Rg1 28. Kg1 Nc2 29. Ra2 Bg6
 30. b4 Nd4 (diagram)



**Take my
 Bishop,
 PLEASE!**

31. Bg5?? Nf3+ (If you insist!) 32.
 Kg2 Ng5 33. Rd2 d4 34. Na4 Nd5
 35. Nb2 b5 36. Rd1 Nf7 37. Rd2
 Nf4 38. Kf1 Bh5 39. Rc2 Bg6 40.
 Rd2 Bh7 White resigns.

Kennedy 1516 **Johansson 2046**
Prairie Cup
 8/21/93 **Round 1**
Alekhine's Defense

1. e4 Nf6 2. Nc3 d5 3. ed5 Nd5 4.
 Nd5 Qd5 5. Nf3 g6 6. d4 Bg7 7. Be3
 Bg4 8. c4 Qa5 9. Bd2 Qb6 10. Bc3
 Bf3 11. Qf3 O-O 12. Be2 c6 13. Rd1
 Nd7 14. O-O e5 15. c5 Qc7 16. Qg3
 Rac8 17. Bc4 ed4 18. Qc7 Rc7 19.
 Ba5 Rcc8 20. Rfe1 Rfe8 21. Rd3
 Nc5 22. Rd4?? Re1 23. Be1 Bd4
 White resigns.

E. Mayer 1126 **Brennan 1752**
Prairie Cup
 8/21/93 **Round 2**
Queen's Pawn Opening

1. d4 Nf6 2. Nc3 d5 3. Nf3 Bf5 4. g3

c6 5. Bg2 e6 6. Bg5 Nbd7 7. Bf6
 Nf6 8. Ne5 h6 9. O-O a6 10. Rc1
 Bd6 11. e3 Be5 12. de5 Ng4 13.
 Qd4 b6 14. Bh3 Ne3 15. Bf5 Nf5
 16. Qa4 b5 17. Qg4 h5 18. Qf3 Qg5
 19. h3 Nd4 20. Qf4 Qe5 21. Qe5
 Nf3 22. Kg2 Ne5 23. Rfe1 Nc4 24.
 b4 g5 25. f3 Kd7 26. g4 hg4 27.
 fg4 Rh6 28. Re2 Rah8 29. Rh1 Kd6
 30. Rf2 Ne5 31. Ne2 f6 32. Ng3
 Ng6 33. c3 Nf4 34. Rf4 gf4 35. Nh5
 Rh5 36. gh5 Rh5 White resigns.

Thompson 2200 **Quimby 1760**
Prairie Cup
 8/21/93 **Round 2**
King's Indian Defense

1. d4 Nf6 2. c4 g6 3. Nc3 Bg7 4. e4
 O-O 5. e5 Ne8 6. Nf3 d6 7. Bd3 c5
 8. dc5 Nc6 9. ed6 ed6 10. cd6 Nd6
 11. O-O Be6 12. c5 Nf5 13. Bf5 Bf5
 14. Qd8 Rad8 15. Bg5 Rc8 16. Rac1
 Nb4 17. Rcd1 Na6 18. Nd5 Kh8 19.
 b4 Rfe8 20. Ne7 Rc7 21. Nf5 gf5
 22. a3 Rcc8 23. Rd7 Rc7 24. Rfd1
 Kg8 25. Kf1 Bb2 26. Rc7 Nc7 27.
 Bc1 Bc1 28. Rc1 Re6 29. Nd4 Rf6
 30. Re1 Kf8 31. Re5 f4 32. b5 a6
 33. a4 f3 34. b6 Ne8 35. Nf3 Re6
 36. Re6 fe6 37. Ke2 Ke7 38. Ke3
 Nf6 39. Kd4 Ng4 40. c6 Black
 resigns.

Johansson 2046 **Goplen 1719**
Prairie Cup
 8/21/93 **Round 2**
Center Game Gambit

1. e4 e5 2. d4 ed4 3. Nf3 d6 4. Bb5
 c6 5. Ba4 Qa5 6. c3 dc3 7. Nc3 Bg4
 8. Bf4 Qb4 9. O-O Nd7 10. Bb3 d5
 11. a3 Bf3 12. gf3 Qa5 13. ed5 O-
 O 14. Qc2 Ne7 15. dc6 Nc6 16.
 Bd5 Nde5 17. Qf5 Nd7 18. b4 Qb6
 19. Rac1 Be7 20. b5 Nd4 21. Na4
 Black resigns.

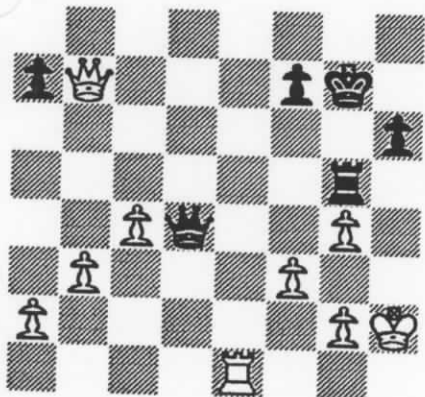
Kennedy 1516 **Z. Mayer 2088**
Prairie Cup
 8/21/93 **Round 2**
Macho Grob

(next page)

1. e4 g5 2. Bc4 Bg7 3. Nf3 h6 4. d4
 c5 5. O-O cd4 6. e5 Nc6 7. Re1 Qc7
 8. c3 Ne5 9. Ne5 Be5 10. Bf7 Kf7
 11. Qh5 Kf8 12. g3 dc3 13. Qf3 Nf6
 14. Nc3 Bc3 15. bc3 d6 16. Bb2 Bh3
 17. c4 Qc6 18. Re3 Qf3 19. Rf3 Kf7
 20. Bf6 ef6 21. Rd3 Rad8 22. Rad1
 Rhe8 23. Rb3 Re7 24. Re3 Rc7 25.
 f3? Rc4 26. Rde1 Bd7 27. Re7 Kg6
 28. g4 Bc6 29. Rc7 Rd7 30. Re7
 Re7 31. Re7 Bf3 32. Rb7?? Bb7
 White resigns.

Ammond 1355 **E. Mayer 1126**
Prairie Cup
8/22/93 **Round 3**
Macho Grob

1. e4 g5 2. d4 h6 3. Be3 Bg7 4. Bd3
 Nf6 5. Nf3 Ng4 6. Qd2 c5 7. c3 cd4
 8. Bd4 Bd4 9. Nd4 Qb6 10. O-O Nc6
 11. Nc6 bc6 12. Qe2 Ne5 13. Rd1
 Rb8 14. b3 d6 15. h3 Rg8 16. Kf1
 Nd3 17. Rd3 Ba6 18. c4 d5 19. ed5
 Rd8 20. dc6 Qc6 21. Rd8 Kd8 22.
 Qd2 Ke8 23. Nc3 Bb7 24. f3 g4 25.
 hg4 Rg5 26. Rd1 Qb6 27. Qd7 Kf8
 28. Re1 Qb4 29. Qd8 Kg7 30. Qe7
 Qc3 31. Qb7 Qd3 32. Kg1 Qd4 33.
 h2



Rh5!! 34. gh5 Qh4 35. Kg1 Qe1 36.
 Kh2 Qh4 (Draw by perpetual check)

Goplen 1719 **Quimby 1760**
Prairie Cup
8/22/93 **Round 3**
Sicilian Defense

1. e4 c5 2. Nf3 Nc6 3. d4 cd4 4.
 Nd4 Qb6 5. Nc6 bc6 6. Nc3 e6

7. Be2 Nf6 8. O-O Be7 9. Qd3 Qc7
 10. f4 d5 11. e5 Nd7 12. Qh3 O-O
 13. Bd3 f5 14. ef6 Nf6 15. g4 e5
 16. fe5 Qe5 17. Rf6 Qf6 18. Qh7
 Kf7 19. Qh5 g6 20. Qh7 Ke8 21.
 Qg6 Kd8 22. Qf6 Bf6 23. h3 Bd4
 24. Kg2 Bd7 25. Bg5 Kc7 26. Rf1
 Rf1 27. Bf1 Rf8 28. Bd3 Kd6 29.
 Bh4 c5 30. Bg3 Be5 31. Be2 Bc6
 32. Bf3 d4 33. Ne4 Be4 34. Be4 c4
 35. Be5 Ke5 36. Bf5 a5 37. a3 Rb8
 38. Kf3 Rb2 39. h4 Ra2 40. h5 Ra3
 41. Ke2 Re3 42. Kf2 a4 43. h6 Kf6
 44. h7 Kg7 45. c3? Rc3 White
 resigns.

Z. Mayer 2088 **Brennan 1752**
Prairie Cup
8/22/93 **Round 3**
The Grob

1. g4 d5 2. h3 e5 3. c4 c6 4. cd5
 Bc5 5. dc6 Qf6 6. e3 Nc6 7. Nc3
 Be6 8. a3 a5 9. Bg2 Qe7 10. Qa4
 Bd7 11. Qb3 Rb8 12. Nge2 Nf6 13.
 g5 Nh5 14. Rg1 g6 15. Nd5 Qd8 16.
 Nec3 Be6 17. Qc4 Be7 18. h4 O-O
 19. Bf3 Ng7 20. d3 Nf5 21. h5 Bg5
 22. hg6 hg6 23. Bd2 Nfe7 24. Rg5
 Nd5 25. Qh4 Kg7 26. Nd5 Bd5 27.
 Bd5 Qd5 28. e4 Qd8 29. O-O-O Rh8
 30. Qg3 Qc7 31. Bc3 Nd4 32. Kb1
 Ne2 33. Qe5 Qe5 34. Re5 Nc3 35.
 bc3 Rh2 36. Rd2 Rbh8 37. Kc2 Rg2
 38. Rb5 Rhh2 39. Rb7 Rf2 40. Rf2
 Rf2 41. Kb3 g5 42. e5 g4 43. e6 g3
 44. e7 Re2 45. Rb5 g2 46. Rg5 Kf6
 47. e8=Q Re8 48. Rg2 Re5 49. Rf2
 Rf5 50. Rf5 Kf5 51. c4 Ke5 52. Kc3
 f5 53. Kd2 Kd4 54. Ke2 a4 55. Kf3
 Ke5 56. c5 Black resigns.

Z. Mayer 2088 **Johansson 2046**
Prairie Cup
8/22/93 **Round 4**
The Grob

1. g4 d6 2. Bg2 c6 3. h3 e5 4. d4
 Nd7 5. Nc3 Qc7 6. Nf3 Ne7 7. Be3
 Ng6 8. Qd2 Nb6 9. de5 de5 10. Ne4
 Be6 11. Qa5 Nd5 12. Qc7 Nc7 13.
 O-O Nd5 14. Bc5 Bc5 15. Nc5 Bc8
 16. e3 b6 17. Ne4 O-O 18. Rfd1 f5

19. Nd6 fg4 20. Ng5 gh3 21. Nh3
 Bg4 22. Rd5 Bh3 23. Bh3 cd5 24.
 Be6 Kh8 25. Nf7 Rf7 26. Bf7 Ne7
 27. Rd1 Rd8 28. c3 g5 29. c4 d4
 30. ed4 Rd4 31. Rd4 ed4 32. Kf1
 Kg7 33. Be6 Kf6 34. Bg4 Ng6 Draw
 agreed

Thompson 2200 **Ammond 1355**
Prairie Cup
8/22/93 **Round 4**
Fried Liver Attack

1. e4 e5 2. Nf3 Nc6 3. Bc4 Nf6 4.
 Ng5 d5 5. ed5 Nd5 6. Nf7 Kf7 7. Qf3
 Qf6 8. Bd5 Be6 9. Be6 Ke6 10. Qb3
 Kd7 11. Nc3 Nd4 12. Qd5 Kc8 13.
 Qe4 Qg6 14. Qg6 hg6 15. Kd1 b6 16.
 Ne4 Kb7 17. c3 Nc6 18. d3 Rd8 19.
 Kc2 Be7 20. Be3 Rd7 21. h3 Rhd8
 22. Rhd1 Bf6 23. b4 a6 24. a4 Ne7
 25. a5 Nd5 26. ab6 Ne3 27. fe3 cb6
 28. c4 Be7 29. Kc3 Rc8 30. d4 ed4
 31. ed4 Rdc7 32. c5 Rd7 33. Kc4
 Bf6 34. Nf6 gf6 35. d5 bc5 36. bc5
 Rdc7 37. Rdb1 Ka7 38. c6 f5 39.
 Kc5 Re8 40. Ra6 Ka6 41. Ra1 Mate

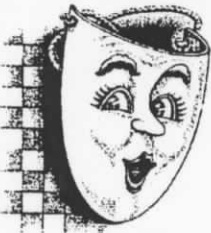
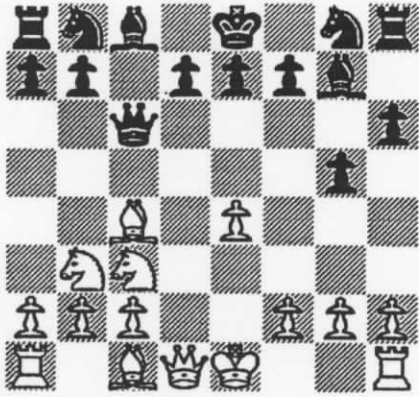
Brennan 1752 **Kennedy 1516**
Prairie Cup
8/22/93 **Round 4**
Center Counter Game

1. e4 d5 2. ed5 Qd5 3. Nc3 Qa5 4.
 d4 Nf6 5. Bd2 c6 6. Bc4 Qd8 7. Nf3
 Bf5 8. O-O e6 9. Re1 Be7 10. Bf4
 Nbd7 11. a3 Nb6 12. Bb3 O-O 13.
 Nh4 Nbd5 14. Nd5 Nd5 15. Nf5 Nf4
 16. Ne7 Qe7 17. Qf3 Qf6 18. Re4
 Nd5 19. Qg3 Rfd8 20. Rae1 Rac8
 21. c3 Qh6 22. Bc2 Nf6 23. R4e3
 Rd5 24. Re5 Qd2 25. Qd3 Qf4 26.
 Rd5 cd5 27. f3 g6 28. Re3 Qc7 29.
 Qe2 Qb6 30. b4 Qc7 31. Qe1 b5 32.
 Bb3 Kg7 33. h3 Nh5 34. Qh4 Qb6
 35. Qg5 f6 36. Qh4 Rf8 37. Qe1 Nf4
 38. Kh1 Qc6 39. Kh2 Qd6 40. g3
 Nh5 41. Re6 Qb8 42. Bd5 Kh6 43.
 Qe3 g5 44. Qe1 Ng7 45. Re4 Qd6
 46. Bb3 Nf5 47. Kg2 Rc8 48. Re6
 Qd8 49. Qe5 Kg7 50. Qf5 Rc3 51.
 Bc2 Kf7 52. d5 Rc2 53. Qc2 Qd5 54.
 Ra6 Qd4 55. Qh7 Kf8 56. Qa7 Black
 resigns.

Quimby 1760
Prairie Cup
8/22/93
Macho Grob

E. Mayer 1126
Round 4

1. d4 h6 2. e4 g5 3. Nc3 Bg7 4. Bc4
c5 5. Nge2 cd4 6. Nd4 Qb6 7. Nb3
Qc6



**OH NO,
NOT
AGAIN?!**

8. O-O?? Qxc4 (Nice way to start
at a game! All eyes were on this
board to see if Eriel would pull off
maybe the upset of the year.) 9.
Nd5 Qc6 10. Be3 Bb2 11. Rb1 Be5
12. Nd4 Qa4 13. Qd3 Nc6 14. Nb5
Kd8 15. Rb3 Qa2 16. Ra3 Qb2 17.
c4 Nb4 18. Nb4 Qb4 19. Rb1 (job
well done!) Qd6 20. Nd6 Bd6 21. c5
Bc7 22. Bd4 Nf6 23. e5 Ng4 24.
Qf5 d5 25. Qf7 Ne5 26. Be5 Be5
27. Qd5 Bd6 28. cd6 ed6 29. Qd6
Black resigns.

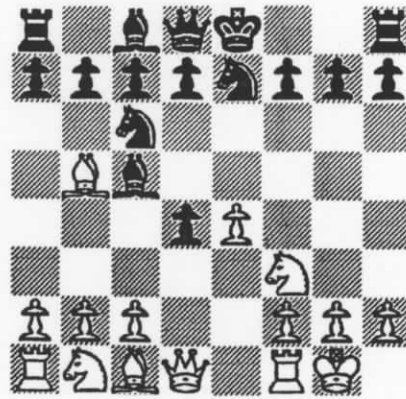
Johansson 2046 Thompson 2200
Prairie Cup
8/22/93 Round 3
Center Game Gambit

Annotations by John C. Thompson

1. e4 e5 2. d4 ed4 3. Nf3 Nc6
I believe 3...c5 could be played here
and if 4. c3 d5 and white gets back

pawn but Black has an even game.

4. Bb5 Bc5 5. O-O Nge7?



I was determined to hold on to the
gambit pawn, but this is frequently
playing chess the hard way. 5...d6,
to restrain the white KP is more
logical. If then 6. Nxd4 Bd7 and
Black has nothing to fear.

6. Ng5

This seems premature, but without
the black KN on his normal square
(f6), White begins a sustained
attack.

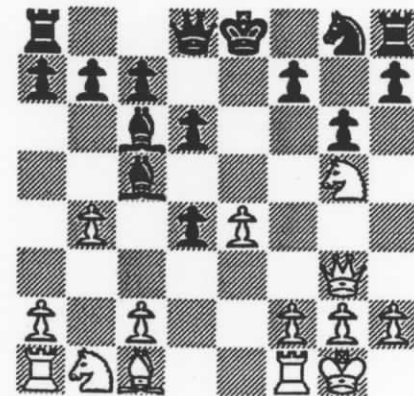
6...d6 7. Qh5 g6

I was reluctant to so weaken my
king-side pawn position, but the
alternative, 7...Ng6 allowed Bc4
and Black gets into real trouble.

8. Qh4 Ng8

A strange move, but I was afraid
of Nxe7, followed by Nf6+, but h5
would have held the position better.

9. Qg3 Bd7 10. Bc6 Bc6 11.
b4



11...Bb6

Maybe I could have taken the pawn
but I didn't want to open more lines
for White and lose more time in
trying to get my king to safety.*

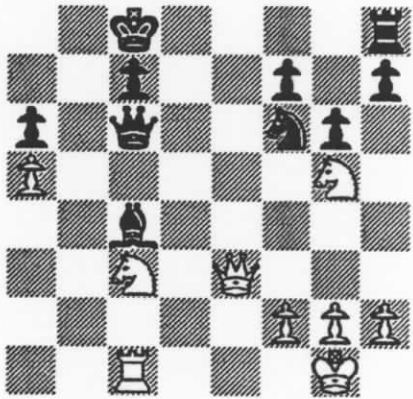
12. a4 a6

So White continues the attack.

13. e5 Qd7 14. Re1 O-O-O

At last! But White doesn't let up.

15. b5 Bd5 16. ba6 ba6 17.
a5 Ba7 18. ed6 Qd6 19. Bf4
Qc6 20. c4 dc3 21. Nc3 Bc4
22. Rac1 Rd3 23. Be3 Be3
24. Re3 Re3 25. Qe3 Nf6

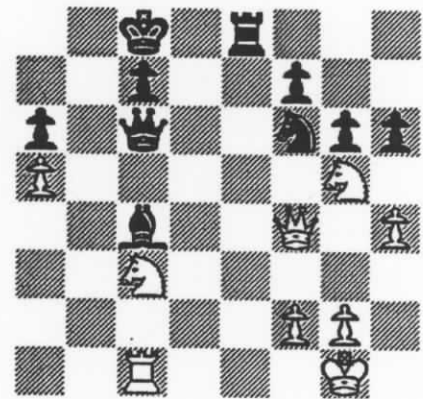


I felt better after the exchanges,
but White still has some threats.

26. h4

This was to give the king some air,
because Black could conjure up
threats on White's first rank.

26...Re8 27. Qf4 h6



Continued on back page (p.12).

* 11...Bxb4 12. Qb3! wins a bishop, doesn't it? - Ed.

THE ORIGIN OF MONTANA CHESS NEWS

BY WILLIAM M. LYNCH

I moved to Montana in January of 1973 from Laramie, WY, where I had been active in the University of Wyoming Chess Club since beginning to play competitive chess in 1969. I got to play in the 1973 Montana Open (2.5-2.5) because I saw in a newspaper item that it was to be held in Billings. The 1974 Open was in Glendive, but I didn't play that year. I played little chess in Billings for the first couple of years because I was busy with my then new job and my first enquiries about the existence of a chess club turned up nothing.

In 1975 I learned that there was a chess club in Billings with meetings at the WMCA. I began to play more and met some other people who were interested in having USCF rated tournaments. Meanwhile, a group of players in Great Falls including Otto Grosse, Bob McKinnon and Lynn Crewse, were pushing for the Montana Chess Association to become affiliated with USCF so that

the Montana Open could become a rated event. A contingent of older members was opposed to this step. When it was voted down at the Montana Open in Great Falls in 1975, The Great Falls group organized the Montana Chess Federation to sponsor rated chess tournaments.

In 1976, the Montana Chess Association was infused with enough of the newer generation that affiliation with the USCF was approved. The Montana Chess Federation was dissolved, and MCA became the primary sponsor of rated events in the state. I got involved and helped organize the first Rimrock Open at the YMCA in Billings in August, 1976. From trying to promote the Billings Tournament and get information on other events, I came to feel that the state needed a vehicle for advertising tournaments and sharing news about results. John Barto encouraged me, and provided a contribution toward costs.

In September of 1976, I

printed a three page bulletin. Using the Billings' YMCA non-profit mailing permit, this "first edition" was mailed to almost 400 addresses from old mailing lists and records provided to me from John Barto. Many of these were bad addresses, but over 200 were still good. In December 1976, I mailed the second issue, the first to carry the logo of the state of Montana covered with chess squares. An appeal was sent out to interested players to submit games and articles.

After the first couple of issues, tournament organizers began to set out a contribution box at their events. The July, 1977 issue gratefully acknowledged the anonymous donations as well as several benefactors who chipped in

"I came to feel that the state needed a vehicle.."

\$5, \$10 and more. Contributions at tournaments continued through 1977, but the amount was not sufficient to cover all of the costs. In the March 1978 issue, subscriptions were offered for \$1.00/year, inviting individuals to subscribe on a voluntary basis. I received enough initial subscriptions to proceed.

Diagrams first appeared in the April 1978 issue, which I also designated as a Special Edition titled MONTANA/WYOMING CHESS NEWS, to promote upcoming events in my chess "alma mater". At the Wyoming Open that May, the Wyoming Chess Association was established as an official USCF affiliate. The new WCA decided to "adopt" the newsletter and pay for its distribution to Wyoming players. So, the May 1978 issue reported that the title would be changed to MONTANA/WYOMING CHESS NEWS which it was for the next year. Incidentally, this was also the issue which introduced the concept of the Grand Prix

championship, an idea which I "borrowed" from Michigan (although I made up my own scoring system since they never published theirs).

The December 1978 issue tallied a total of 118 paid subscriptions, including those backed by the WCA. Total circulation was still kept at 200 by mailing complimentary copies in order to keep mailing through the non-profit permit at the Billings WMCA. This strategy was abandoned in 1979, and the newsletter reverted to first class postage.

At the 1979 Wyoming Open, the WCA decided they could not continue to subsidize the newsletter for all of their players. Meanwhile at the 1979 Montana Chess Association business meeting the MCA adopted a new constitution and the newsletter was adopted as the official publication of the Association (with yours truly continuing as editor). Dues were established at \$3/year regular, and \$2/year junior, to maintain the costs of producing and mailing the newsletter. The title reverted to MONTANA CHESS NEWS- although the coverage of Wyoming events continued despite dropping of the /WYOMING from the title.

In the ensuing 14 years it was my pleasure/labor of love to continue editing and publishing the Association newsletter. At times there were others who expressed an interest in doing the job, and I always encouraged these people as I felt the newsletter and the MCA would benefit from having a fresh outlook. But, each time circumstances prevented the actual "passing of the torch". I am, therefore, especially pleased that Les Brennan has "bit the bullet" and stepped in for a run as Editor. I think that everyone would agree that he is doing a great job - and has brought that sorely needed freshness to MCN.



Thank you Bill. - Les

UPCOMING EVENTS

BOBCAT OPEN SEPT. 18, 19 1993

Room 275, Student Union Building, Montana State University, Bozeman, MT. 4 Round Swiss. Time control: 40/2, 20/1. Rounds: 2:00pm, 7:00pm, 9:00am, 1:00pm. Registration 1:00 -1:45pm Sept. 18. EF \$10 if by 9/16, \$15 at site. Prize fund: \$\$ based on # of entries. MCA membership required (\$6), other states OK. No smoking, No computers. For advance registration or info: Steve Scarff, 916 W. Koch, Bozeman, MT 59715 (406) 586-4479

THE BOBCAT OPEN WILL BE HELD IN CONJUNCTION WITH THE
CLOSED MONTANA STATE CHAMPIONSHIP COMPETITION,
(WHICH WILL BE GOING ON ACROSS THE HALL IN ROOMS 273 & 274)

1993 -1994 MONTANA POSTAL CHESS CHAMPIONSHIP SEPT. 30, 1993

SEPTEMBER 30th, 1993 is the entry deadline. One section up to eleven entries. EF \$5. The first Eleven entries play for the Title of Montana Postal Champion and the plaque! Time Control : 10 moves/30 days. Sponsor : MCA. Registration / info: William M. Lynch, 1914 Colton Blvd. Billings, MT 59102 (406) 256-1399

JACKSON HOLE OPEN OCT. 2, 3 1993

Antler Motel, 43 W. Pearl, Jackson, Wyoming. 5 Round Swiss. Time control: 40/2, SD/1. Rounds: 9:00am, 2:00pm, 7:00pm, 9:00am, 2:00pm. Registration 8:00-8:45am Oct. 2. Guaranteed prizes \$500 (Open section 1st place \$350, 2nd place \$150). Total prize fund based on 50 players: \$1500. Three sections: Open section 1st \$350, 2nd \$150, Top expert \$100. Reserve section (available to under 1800) 1st \$250, 2nd \$125, Top < 1600 \$100, Top < 1500 \$100. Premier section (available to under 1400) 1st \$150, 2nd \$100, Top unrated \$75. Biggest upset prize \$50. Total Grand Prix points available: 15 points. Entrance fees: Open \$35, Reserve \$30, Premier \$25 if received by 9/27, \$5 more at door. For preregistration and/or information: Steve Smith, 526 W. 7th St., Powell, WY 82435 (307) 754-7060. Antler Motel: (307) 733-2535. Special rates at Antler Motel: Single \$36, Double \$42, Triple \$46, Quad \$50 (Mention chess). Special Note: The Jackson Hole Open is being held in conjunction with the last two days of the Annual Jackson Fine Arts Festival. (Bring the family)

CHINOOK OPEN OCT. 9, 10 1993

College of Great Falls, building #1, rooms 206 & 207 (building located closest to corner of 23rd & 13th Ave. So.) GF, MT. 5 Round Swiss. Time control: 45/2, 20/1. Rounds: 10:00am, 2:00pm, 7:00pm, 9:00am, 1:00pm. Registration 8:00-9:30am Oct. 9. EF \$20 if by 10/9, \$25 at site. Prizes: \$400 b/20 (\$100 1st, \$50 2nd plus: \$50 & \$25 for 1st & 2nd of each of three divisions to be formed by dividing total line-up into three equal parts). For advance registration or info: Doug Hansen, P.O. Box 2041 Great Falls, MT 59403

TURKEY OPEN NOV. 6,7 1993

Room 362, Social Science Building, University of Montana, Missoula, MT. 5 Round Swiss. Time control: 30/90, SD/60. Rounds: 9:00am, 2:30pm, 7:30pm, 8:30am, 1:45pm. Registration 8:00 - 8:30am Nov. 6. EF \$15 if by 11/4, \$20 at site. Juniors half price (\$7.50 if by 11/14, \$10 at site.) No other discounts. Prize fund: \$200 Guaranteed (\$100 1st, \$50 2nd, \$25 U1900, \$15 U1700, \$10 U1500) Trophy for biggest upset (both players must have nonprovisional rtings). MCA membership required (\$6), other states OK. No smoking, No computers, Wheelchair accessible. For advance registration or info: Sherwood Moore, 453 Minnesota, Missoula, MT 59802 (406) 728-1695

JOHANSSON - THOMPSON

CONTINUED FROM PAGE 9

This (27...h6) drives the N to a central square, but I needed e5 for my rook if the other white N moves and White is threatening my bishop.

28. Nf3 Re7 29. Nd1 Re4 30. Qh6 Qe6 31. Ne3 Ng4 32. Qf8 Kb7 33. Qb4 Bb5 34. Qc5



34...Nxe3 ??

What a shame to end an interesting game by a beginner's blunder. Both players were very short of time and both flags were on the point of falling. I thought I had more time than White, so I moved hurriedly, to my sorrow.

35. Qc7+ Ka8 36. Qd8+

1-0 Mate next move. 34...Qd6 would have, of course, held the position and if we both had succeeded in reaching move 40 I believe I had the better endgame prospects in view of my passed QBP and White's weak A pawn.



JOHN C. THOMPSON

The next issue will cover the Closed Championship games as well as all other Montana events of Sept and Oct. In the meantime, play a lot of chess, make your score-sheets legible, annotate your games, and send'em to MCN. Oh and please send pictures.

12475278 1914 R 9211
Thad Suits
2125 1st Ave. N.
Great Falls, MT 59401

