

# MONTANA CHESS NEWS

JAN. -FEB. -MAR., 1990 VOLUME XV-ISSUE 1

## PAUL MOTTA CHALKS UP WINS AT TURKEY AND WINTER

### FIRST ANNUAL SPECIAL ACHIEVEMENT AWARDS

The first MCA - MAXIMUM RATING GAIN AWARD goes to new member Thad Suits of Great Falls. Thad was listed in the 1988 Annual List at 1767, and he reached 1927 in the 1989 Annual List, for a gain of 160 points. The award is presented to the MCA Member with the most rating gain, whose rating was established at the beginning of the year. Suits was well in front of the competition, but Nick Pazderic (1576-1695=119) and Dave Gentry (1004-1118=114) deserve mention for gaining over 100 points.

The first MCA - UPSET OF THE YEAR AWARD goes to John Kennedy of Colstrip. John defeated his compatriot Les Brennan in the Billings 30/30 last January. Ratings used for the event were Brennan 1737, and Kennedy 1334, for a difference of 403 points. Honorable mention goes to Jim Loy of Bozeman for his win over Jon Lenchner in the Montana Open (2268-1897=371). The award goes to the player with the greatest upset differential in games where both players have established ratings ("Upset" draws count as one-half of the rating point differential).

Paul Motta of Ennis, Montana, won the Turkey Open Chess tournament held on the Univ. of Montana Campus November 4-5, 1989. He scored  $4\frac{1}{2}$  of a possible 5, drawing in the last round with Thad Suits of Great Falls. Paul's aggressive style and constant search for a mating attack are reminiscent of the intensity of former World Champion Tal. Paul's love of the tactical complications resulting from gambit play constitutes a significant challenge to the defensive skills of Montana players who meet him over the board or in postal chess. \* Zygmund Mayer of Belgrade won second place with a score of 4 points; his only loss was to Motta. Bob Phillips of Missoula won the prize for the biggest upset when he defeated the current State Champion, Mike Jensen (also of Missoula) in the third round. Arman Goplen of Kalispell won the honors for the best for a player under 1700 by posting a score of 3 points. Lyle Petersen of Paradise and Sherwood Moore of Missoula tied for the best under 1500 with scores of 2 each. - Bill McBroom.

Paul Motta swept to a clear first with a perfect 4-0 score at the Winter Open in January. Paul presents his exciting final round win in an article on page 2. Zygmund Mayer fell victim to one of Motta's attacks for the second time in as many tries, but he had the satisfaction of a nice win over Wyoming's Steve Smith. Bill McBroom scored 3-1 for under 1800 honors, losing only to Smith in Round 1. Don Price won the upset award for defeating Chad Robinson, and shared under 1400 honors with newcomer B. K. Parekh, as well as Ken Cook and Lyle Petersen. - Bill Lynch

Motta's victories propelled him into a commanding lead in the '89-'90 Grand Prix race with 38.88 points. Mike Jensen slipped to second, remaining at 23.80 points, while Zygmund Mayer climbed into third with 15.87 points. Kip Stubberud stands fourth at 15.04 and Kip Limesand is fifth with 12.32. The top two finishers, after the Montana Open, are seeded into the Montana Closed Championship Playoff.

# BLACK KING IN THE CORNER POCKET

by PAUL MOTTA

All of us dream that someday we will have the opportunity to compete in a game where not only a lot is riding on the outcome but also where we win the contest with flying colors. Such an opportunity for me presented itself in the last round of the Billings Winter Open which took place on January 13-14.

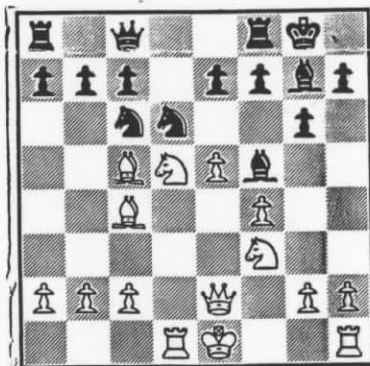
Entered in the event were 22 competitors including strong players such as J.C. Thompson (2200), Steve Smith (2187), Zygmund Mayer (2108) and myself (2041). The high-rateds, of course, had to contend with the other players who "on any Sunday" have the capacity to upset us so-called "Experts & Masters". The setting for the subject of this article was made possible after my win against J.C. Thompson in round 2 and Zygmund Mayer's upset of Steve Smith, also in round 2. Both Mayer and I had won our third round games on Sunday morning and, being the only players with a perfect score of 3.0, were scheduled to meet in the final round to battle it out for 1st place. Zygmund had already lost to me at the Turkey Open in November by way of a sharp, thrilling game in which we had both experienced the joyous feeling of time pressure. This game would prove to be no exception.

## PIRC DEFENSE

W: Paul Motta (2041)  
B: Zygmund Mayer (2108)

1. d4 Nf6 2. Nc3 g6 3. e4 d6  
4. Bc4 Bg7 5. Qe2 (This line is one of the sharpest lines against the Pirc. There are several good moves for Black at this point: 5... Nc6, c6, O-O,

or e5) O-O 6. e5! d:e?! 7. d:e Ne8?! (My opponent did not quite understand the position. Best here is ...Ng4.) 8. f4 Nc6 9. Be3! (Maintaining control of d4 and the d-file. Now if ...Nd4 then I play Qf2 followed by Rd1. Had I played 9. Nf3 then Black would have ...Bg4.) Bf5 10. Nf3 Na5? (Mayer did not realize the threats from my superior development) 11. Rd1! Qc8 (If Bd7 then 12. e6! N:c4 13. R:d7 followed by Q:c4 and White is up a piece) 12. Nd5! (Now Black has no choice but to retreat the knight back to c6) Nc6 13. Bc5! (The threat on e7 is too strong. White wins at least a pawn) Nd6?!



(I had not considered this possibility. Consequently, I spent over 1/2 hour trying to figure out if I could capture the knight and win. Here are some lines I looked at:

14. N:e7+ N:e7 15. e:d e:d  
16. B:d6 Re8 17. B:e7 Bf8

or

14. N:c7 N:c4 15. N:a1 N:b2  
16. Rb1 Na4

and

14. N:c7 Q:c7 15. e:d e:d  
16. B:d6

but

14. N:c7 Q:c7 15. e:d Qa5+!  
16. b4 N:b4)

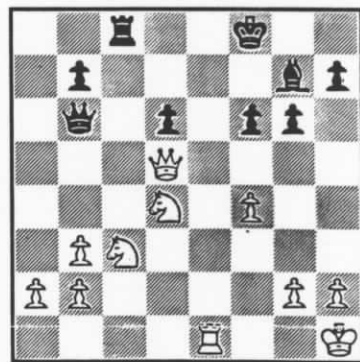
14. e:d (Yes!) e:d 15. Be3 Re8  
16. O-O Na5! (A very sharp and interesting move. The threat is ...N:c4 followed by c6 and R:e3. If 17. Bd3 then Be6) 17. Bb3 c6 18. Nc3 Nb3 19. c:b! (If a:b then B:c2 followed by 20. Q:c2 R:e3 or 20. Rd2 B:b3) Qe6?! 20. Rfe1 Rad8? 21. Qf2! (The reason that Black's 19th move is questionable. Now White wins a pawn and the Black queen is threatened) Qd7 22. B:a7 Re1+ (I'm not sure if giving me control of the open e-file is correct) 23. R:e1 Bd3 (At this point Zygmund realizes that I

am in serious time trouble. He was probably seeking not only a better diagonal for the bishop but also to make me hurry my moves) 24. Bd4! (This move, I believe, secures the position for me. I will exchange off his better bishop and weaken his kingside. Or will I?) f6? 25. Qe3! (Control of the e-file with tempo) c5?! (Very speculative on Mayer's part but I am in serious time trouble. I have 15 moves to make with only 4 minutes left) 26. Q:d3! c:d 27. Q:d4 Kf8? (My opponent later felt that ...f5 would have slowed me down but 28. Qd5+ followed Ng5 is very strong. I thought that ...d5 might be better but 28. Rd1 wins) 28. Qd5! (Securing control of the weak white squares) Qc7 (Looking for Qc5+) 29. Nd4! (The party is almost over) Qb6 30. Kh1 Rc8? (After the game I was told that possibly 30...Rd7 might have held but what would follow is: 31. Ne6+

a. 31...Kg8 32. Ng5+ Kh8  
33. Re8+

or 31...Kg8 32. Ng5+ Kf8  
33. N:h7mate

b. 31...Ke8 32. N:g7dis.ch)



31. Ne6+ Kg8 32. Ng5 dis.ch. (Black is more than lost. He is checkmated!) Kh8 33. Nf7+ (Only seconds left!) Kg8 34. Nh6+ Kh8 35. Qg8+ R:g8 36. Nf7 mate! Black king in the corner pocket! What a finish! My flag was hanging by a thread and I still had four moves left to make time control. Overcome by adrenalin rushing through my veins, I could only close my eyes and take a deep breath. In the background I heard an applause and knew that the spectators must have really enjoyed the tense action and the final checkmate. A fitting finish to a fine weekend!

WINTER OPEN

January 13-14, 1990

P1 Name	Rate	RD1	RD2	RD3	RD4	TOT
1 Paul Motta	2041	W18	W4	W10	W2	4.0
2 Zygmund Mayer	2102	W7	W3	W5	L1	3.0
3 Steve Smith	2187	W6	L2	W14	W8	3.0
4 John Thompson	2200	W11	L1	W13	W12	3.0
5 Bill Lynch	1906	W12	W15	L2	W9	3.0
6 Bill McBroom	1709	L3	W9	W17	W10	3.0
7 Nick Pazderic	1695	L2	D16	W15	W18	2.5
8 Gregg Ford	1633	D15	W22	W16	L3	2.5
9 Don Price	1370	W20	L6	W11	L5	2.0
10 B. K. Parekh	NON	W19	W18	L1	L6	2.0
11 Chad Robinson	1736	L7	W14	L9	W16	2.0
12 Steve Scarff	1643	L5	W17	W19	L4	2.0
13 Ken Cook	1384	L17	W20	L4	W19	2.0
14 Lyle Petersen	1396	W22	L11	L3	W17	2.0
15 Les Brennan	1775	D8	L5	L7	W20	1.5
16 Harold Moneyhun	1383	W21	D9	L8	L11	1.5
17 Shane Noble	NON	W13	L12	L6	L14	1.0
18 Kip Limesand	1691	L1	L10	W22	L7	1.0
19 Charles Williams	1191	L10	W21	L12	L13	1.0
20 Richard Suko	1067	L9	L13	W21	L15	1.0
21 Eriel Mayer	1181	L16	L19	L20	W22	1.0
22 Ervin Suko	NON	L14	L8	L18	L21	0

RD1 BD1 McBroom-Smith NIMZOVITSCH-LARSEN 1 b3 e5 2 Bb2 Nc6 3 c4 f5 4 g3 Nf6 5 Bg2 d6 6 a3 Be7 7 e3 0-0 8 Ne2 Qe8 9 0-0 Nd8 10 d3 c6 11 Nd2 Qh5 12 Re1 Nf7 13 f4 Ng4 14 Nf1 g5 15 d4 gxf4 16 dxe5 fxe5 17 Nf4 Qh6 18 h3 N4xe5 19 Rxe3 Bg5 20 Qd4 c5 21 Qc3 Rb8 22 Nh2 Bd7 23 Nf3 Bxf4 24 gxf4 Qxf4 25 Nxe5 Nxe5 26 Rf1 Qh6 27 Bd5+ Be6 28 Rg3+ Kf7 29 Rxf5+ Ke7 30 Bc1 White Resigns. 0-1

RD1 BD6 Ford-Brennan SICILIAN 1 e4 c5 2 Nf3 d6 3 d4 cxd4 4 Nxd4 Nf6 5 Nc3 a6 6 Bg5 e6 7 Bd3 Nbd7 8 0-0 Be7 9 Nf3 b5 10 Re1 Nc5 11 e5 dxe5 12 Nxe5 Nxd3 13 Qxd3 Qxd3 14 Nxd3 Bb7 15 Rad1 h6 16 Bh4 Rad8 17 Ne5 g5 18 Bg3 Nh5 19 Rxd8+ Bxd8 20 Rd1 Bf6 21 Rd7 Bxe5 22 Rxb7 Nxb3 23 hxg3 Bd4 24 Rb8+ Ke7 25 Rxh8 Bxh8 26 Nd1 f5 27 Kf1 Kd6 28 Ke2 Kd5 29 Kd3 Kc5 30 f3 h5 31 g4 hxg4 32 fxe4 Kd5 33 gxf5 exf5 34 b3 f4 35 c4+ bxc4+ 36 bxc4+ Kc5 37 Nf2 Kc6 38 Ne4 g4 39 g3 fxe3 40 Nxb3 Be5 41 Ne2 g3 42 Ke4 Bd6 43 Kf3 Kc5 44 Nxb3 Bxb3 45 Kxb3 Kxc4 46 Kf3 Kb4 47 Ke3 a5 48 Kd3 Draw Agreed. 1/2-1/2

RD2 BD1 Motta-Thompson BLACKMAR-DIEMER

GAMBIT 1 d4 Nf6 2 Nc3 d5 3 e4 dxe4 4 f3 e3 5 Bxe3 Bf5 6 Bc4 e6 7 Nge2 Bd6 8 Qd2 c6 9 g4 Bg6 10 Bf4 Bxf4 11 Nxf4 Nbd7 12 h4 Nb6 13 Bb3 h5 14 Nxb3 fxe6 15 Qd3 Kf7 16 0-0-0 Qd6 17 Ne4 Qf4+ 18 Kbl Nxe4 19 fxe4 Ke7 20 Rdf1 Qb8 21 d5 Rd8 22 Qc3 e5 23 dxc6 Black Resigns. 1-0

RD2 BD2 Smith-Mayer KING PAWN 1 e4 Nf6 2 Nc3 d5 3 e5 d4 4 Nce2 Ng4 5 f4 d3 6 cxd3 Qxd3 7 Nf3 Nc6 8 Nc3 Qd8 9 d4 e6 10 Be2 Be7 11 0-0 Nb4 12 a3 Nd5 13 Qd3 Nh6 14 Ne4 a6 15 Bd2 Bd7 16 a4 Bc6 17 b3 Qd7 18 Nc5 Bxc5 19 dxc5 Rd8 20 Rael Qe7 21 Qc2 Nf5 22 Bd3 g6 23 Ng5 Nd4 24 Qc4 Nf5 25 g4 Nh4 26 Ne4 h5 27 g5 Qd7 28 Bb1 Kf8 29 Qe2 Nf5 30 Qf2 Nde7 31 Bc3 Qd5 32 Bc2 Qd7 33 Nf6 Qc8 34 Be4 Nd5 35 Bb2 Nxf6 36 exf6 Qd7 37 Be5 Kg8 38 Qc2 Kh7 39 Qf2 Bxe4 40 Rxe4 Qc6 41 Rc4 Rd3 42 Rc3 Rhd8 43 Re1 Rxc3 44 Bxc3 Rd3 45 Bb2 Rf3 46 Rxe6 fxe6 47 White Resigns. 0-1

RD3 BD1 Mayer-Lynch CENTER COUNTER GAMBIT 1 e4 d5 2 exd5 Nf6 3 c4 c6 4 dxc6 Nxc6 5 Nf3 e5 6 Nc3 Bf5 7 d3 Bb4 8 Qc2 e4 9 dxe4 Bxe4 10 Qe2 0-0 11 Bd2 Re8 12 0-0-0 Bc2 13 Kxc2 Rxe2 14 Bxe2 Ng4 15 Rhf1 Nd4+ 16 Nxd4 Qxd4 17 Bg5 Bxc3?? 18 Rxd4 Bxd4 19 Bxg4 Black Resigns. 1-0

RD3 BD2 Parekh-Motta QUEEN PAWN GAME 1 Nc3 d5 2 d4 Nc6 3 e3 e5 4 dxe5 Bb4 5 a3 Bxc3+ 6 bxc3 f6 7 exf6 Nxf6 8 Bb2 0-0 9 c4 Be6 10 Ne2 dxc4 11 Nf4 Qe7 12 Be2 Rad8 13 Qb1 Ne4 14 Qa2 Rxf4 15 exf4 c3 16 Bc4 Bxc4 17 Qxc4+ 18 Bxc3 Ng3+ 19 Be5 Nxe5 20 Qb4 Nf3++ 0-1

RD3 BD6 Price-Robinson KING PAWN GAME 1 e4 c5 2 Nf3 Nc6 3 Bc4 e5 4 Nc3 Be7 5 d3 Nf6 6 0-0 d6 7 Bg5 0-0 8 Qd2 h6 9 Bxh6 gxh6 10 Qxh6 Nh7 11 Ne2 Nd4 12 Ng3 Bg4 13 Qg6+ Black Resigns. 1-0

RD4 BD5 McBroom-Parekh NIMZOVITSCH-LARSEN 1 b3 d5 2 Nf3 Nc6 3 Bb2 d4 4 g3 e5 5 d3 Nf6 6 Bg2 Bb4+ 7 c3 dxc3 8 Bxc3 Ng4 9 0-0 Bxc3 10 Nxc3 0-0 11 Rcl Qe7 12 Qd2 Rd8 13 Qb2 Bf5 14 Nh4 Be6 15 Nf3 Bd5 16 Nxd5 Rxd5 17 Nh4 Rd6 18 Nf5 Qg5 19 Nxd6 cxd6 20 h3 Nf6 21 Bxc6 bxc6 22 Rxc6 Qf5 23 Kg2 h6 24 Rxd6 Re8 25 e4 Qc8 26 Rcl Qb8 27 Rdc6 Nd7 28 Qc3 Nh6 29 Qa6 Re6 30 Rxe6 fxe6 31 Qc5 Kh7 32 Qc7 Qa8 33 Qxe5 Nd7 34 Qxe6 Nf6 35 Qf5+ Black Resigns. 1-0

RD4 BD2 Smith-Ford PIRC 1 e4 d6 2 Nc3 Nf6 3 f4 g6 4 Nf3 Bg7 5 g3 0-0 6 Bg2 Nbd7 7 0-0 e5 8 d3 c6 9 h3 exf4 10 gxf4 Nc5 11 Be3 Bd7 12 Qel Qc8 13 Kh2 Na6 14 Qh4 Nc7 15 Rgl Qd8 16 Bh1 Nh5 17 Qf2 Ne6 18 f5 Nf4 19 Qd2 Be5 20 d4 Ne2+ 21 dxe5 Nxgl 22 Rxgl dxe5 23 Bc5 Re8 24 Qh6 f6?? 25 Qxh5 Black Resigns. 1-0

Games selected by Bill Lynch



A LETTER FROM JON LENCHNER

Dear Bill,

It has been suggested to me by several players that I write up some analysis, tips for getting better, etc. for the Montana Chess News. In this vein, I present the following, farv from perfect game. It contains some good moves, but also an incredible oversight (see black's move 29). Developing an ability to produce deep, probing analysis is a key to getting better. My suggestion therefore is to analyze the crap out of this game, and hopefully find holes in my analysis. At some points I have neglected to comment despite the fact that the positions are very rich; see what you can find!

Rocca - Lenchner  
National Open, 1989

- 1. e4 d6
- 2. Bc4 Nf6
- 3. d3 g6
- 4. f4

My opponent, an Italian emigre to the United States, rattled off these first few moves. We both stood at 3-1 going into this, the fifth round. The system is unusual but not bad.

- 5. Bb3 c6

Else 5...d5 equalizes.

- 6. Nf3 Nbd7

Played quickly; I expected 6. c3.

- 7. Be3 Nc5
- 8. ab Nb3

Prior to playing 7...Nb3 I glanced at the fantasy variations beginning now with 8...Ng4 9. Bd4 e5. Only now did I realize that 8...Ng4 would be answered by 9. Ba7 with the threat of 10. Bb6! My next move puts an end to this possibility but leaves me less flexible in the center. Probably 8...Bg7 with the idea of 9. Ba7 Nd7 improves.

- 9. h3 c5
- 10. Nc3 Bg7
- 11. g4 O-O

I was convinced white was overextending.

- 12. Ne2 b6
- 13. Ng3 Bb7
- 14. c3 Nd7
- e5 ?!

14...e6! was best and if 15. d4 f5 when 16. e5 is not playable due to a sham sac on e5 followed by f4. 15. f5 seems best but then ef 16. gf Ne5 17. h4 d5 and black's pieces will rake the board.

- 15. f5 d5
- 16. Qe2 ?!

I was worried about 16. c4 Sure, after dc 17. dc Nb8 I wil l get to d4 with greater effect than if white maneauvers his knight to d5, but I will have to make concessions on the kingside to prevent g5 and f6.

- 17. Bd2 d4
- 18. bc dc

At this point, Rocca told me later, he was very happy with his position.

- 19. h4 b5 !

It is not too late for 19. c4 but after b4 (bc is also interesting), not only will black land a piece on d4 and/or own the d-file but his queenside majority will roll unimpeded.

c4 !

Black must break things open or get smashed on the kingside.

- 20. dc bc
- 21. b4

If 21. bc Nc5 22. O-O a5 black is better, or 21. Qc4 Rc8 22. Qb4 (seemingly best) Nc5 23. O-O Qd3 24. Rael a5 and again black is on top.

- 22. h5 a5
- 23. h6 g5
- 24. g5 Bf6
- 25. gf f4
- fg

Incredibly, white's king is more insecure than black's!

- 26. Rh3 ab
- 27. Ra8 Qa8
- 28. Rg3+ Kh8
- 29. Qc4 Be4 ?

Amazingly, an immediate win was to be had by 29...Qa1+ 30. Kf2 Ba6 (continued page 5)

(A Letter from Jon Lenchner continued)

31. Q-any Qf1+ 32. Ke3 Qe2 mate. Psychologically, I was just not open to a quick K.O., and wanting to recoup lost time on my clock, just continued with my plan. I had seen up to 32. Ke3 before playing Be4 and upon settling into my chair after playing the move, it dawned on me that Qe2 was mate. Fortunately black still has a big advantage, though he must keep his emotions in check and his thoughts channeled on the game at hand.

30. Ng5 Bg6  
31. cb Nf6

This pawn is perhaps of questionable significance.

32. Bc3 Nd7  
33. Qb5 Qc8

Possible is Qe8 but with little time remaining to the time control at move 45 I decided activity was more important than a pawn.

34. Be5+ Ne5  
35. Qe5+ f6  
36. Qb2

On 36. Qd4 white feared Qc2 37. Rc3 (tempting but 37. Kf1 is better) Re8+ 38. Kf1 (38. Re3 Qc1+ 39. Kf2 Qe3+ 40. Re3 Re3 41. Ke3 fg winning) Qe2+ 39. Kg1 Qe1+ 40. Kg2 (Kh2 just leaves fewer options next move) Re2+ 41. Kf3 (Kh3 Bf5+) Qf1+ and now 42. Kg3 Qg2+ mates after picking up the N on g5 with check, and similarly for 42. Kg4 Qf5+.

Qf5

Trying to cut the white king off from a safe haven on the kingside.

37. Nf3 Rc8  
38. Nd2 Bh5  
39. Qa3

Re8+ was threatened.

Qf4

Renewing the threat.

40. Re3 Rc1+  
41. Qc1 Qe3+  
42. Kf1 Be2+  
43. Kg2 Bf3+  
44. Kg3

44. Kh3 Be4+ would just offer White fewer

options.

Be4+

At this point my opponent's score sheet said that he had made 45 moves, while mine said 44. Meanwhile we each had seconds left and my mind reeled through the variations which I had been looking at, at least since move 40. I seemed to have a win in each variation, but I was looking at a tree with many branches; had I covered all of them? Fortunately there is a checking win in all variations (the most difficult to find was 45. Kh4 Qf2+, etc; I leave the full tree of analysis as an exercise), and after letting his flag fall, White Resigned.

Best Regards,

Jon Lenchner

\*\*\*\*\*

UCCC 2ND FALL

10/12 - 10/26, 1989

P1 Name	Rate	1	2	3	4	TOT
1 Richard Gray	1425	x	1	1	1	3.0
2 Romie Carpenter	1900	0	x	1	1/2	1.5
3 Nick Pazderic	1700	0	0	x	1	1.0
4 Bill McBroom	1772	0	1/2	0	x	0.5
Match: Jon Lenchner	2262	1/2	1	1	1	3.5
Mike Jensen	2006	1/2	0	0	0	0.5

Carpenter-Gray GIUCCO PIANO 1 e4 e5 2 B c4 Nf6 3 d3 Nc6 4 Nc3 Be7 5 f4 exf4 6 Bxf4 d6 7 a3 Bg4 8 Qd2 0-0 9 h3 Be6 10 Nd5 a6 11 Nf3 b5 12 Ba2 a5 13 Ng5 Bcd5 14 exd5 N e5 15 c4 Qe8 16 0-0 Nh5 17 Bxe5 dxe5 18 N e4 bxc4 19 Bxc4 Bd6 20 Rf5 Nf4 21 d4 f6 22 Rf1 Qg6 23 dxe5 fxe5 24 Rxf8+ Rxf8 25 Nxd6 cxd6 26 Kh1 Qe4 27 Bb3 Rf6 28 Rf3 Rf8 29 Qxa5 Qe2 30 Rg3 Nxc2 31 Rxc2 Qf1+ 32 Rg1 Qxh3++ 0-1

Jensen-Lenchner SICILIAN 1 e4 c5 2 Nc3 N c6 3 g3 g6 4 Bg2 Bg7 5 d3 Rb8 6 Be3 Nd4 7 Qd2 b5 8 Nce2 d6 9 c3 Nxe2 10 Nxe2 Nf6 11 Bh6 0-0 12 Bxg7 Kxg7 13 0-0 Bb7 14 Nf4 Qb6 15 Rfel e5 16 Nd5 Bxd5 17 exd5 c4 18 dxc4 bxc4 19 Rab1 Rfc8 20 b4 cxb3 e.p. 21 Rxb3 Qa5 22 Re1 Rxb3 23 Rxb3 Rc5 24 Qb2 Nxd5 25 Ra3 Qc7 26 Bxd5 Rxd5 27 Qb3 Rd2 28 c4 Q c5 29 Qe3 Rd1+ 30 Kg2 Qxc4 31 Rxa7 Qf1+ 32 White Resigns. 0-1

Thanks to Romie Carpenter for submitting this report. Additional UCCC material must wait until next issue.

TURKEY OPEN

November 4-5, 1989

P1 Name	Rate	RD1	RD2	RD3	RD4	RD5	TOT
1 Paul Motta	1969	W21	W17	W2	W5	D4	4.5
2 Zygmund Mayer	2102	W8	W6	L1	W3	W5	4.0
3 Kip Stubberud	2103	D10	W8	W9	L2	W6	3.5
4 Thad Suits	1913	W12	L5	W20	W13	D1	3.5
5 Bob Phillips	1732	W18	W4	W7	L1	L2	3.0
6 Dave Shughart	1876	W20	L2	W12	W7	L3	3.0
7 Mike Jensen	2012	W13	W15	L5	L6	W9	3.0
8 Arman Goplen	1663	L2	L3	W22	W20	W13	3.0
9 Nick Pazderic	1700	W22	W11	L3	D10	L7	2.5
10 Dennis Petrak	1667	D3	L13	W21	D9	D11	2.5
11 Romie Carpenter	1900	W16	L9	L13	W14	D10	2.5
12 Ray Jorgenson	1535	L4	W14	L6	D18	W21	2.5
13 Kip Limesand	1655	L7	W10	W11	L4	L8	2.0
14 Lyle Petersen	1396	L15	L12	W19	L11	W20	2.0
15 Dan McCourt	1831	W14	L7	W16	WD	WD	2.0
16 Sherwood Moore	1481	L11	W19	L15	OBY	W18	2.0
17 Ron Erickson	1755	W19	L1	W18	WD	WD	2.0
18 Dave Gentry	1091	L5	BYE	L17	D12	L16	1.5
19 Eriel Mayer	1181	L17	L16	L14	BYE	D22	1.5
20 R. Cleavenger	1441	L6	W22	L4	L8	L14	1.0
21 Gregg Ford	1633	L1	OBY	L10	W22	L12	1.0
22 Ross Chaney	NON	L9	L20	L8	L21	D19	0.5

RD1 BD1 Petrak-Stubberud DUNST 1  
 N-QB3 P-Q4 2 P-K4 P-Q5 3 N-K2 P-K4 4  
 N-KB3 B-Q3 5 N-N3 B-K3 6 B-N5+ QN-Q2  
 7 O-O P-QB4 8 P-Q3 P-KR3 9 N-R5 R-R2  
 10 P-QR4 P-R3 11 BxN+ QxB 12 B-Q2 P-  
 KN3 13 N-N3 B-N5 14 P-N4 PXP 15 P-R5  
 N-K2 16 Q-N1 BxN 17 PxB N-B3 18 N-K2  
 P-QN3 19 PXP P-QR4 20 K-N2 R-N1 21 P  
 -R3 Q-Q1 22 Q-N3 P-N4 23 Q-Q5 K-Q2  
 24 N-N3 QxP 25 N-B5 Q-B4 26 NxB QxN  
 27 KR-QN1 K-K2 28 RxRP NXR 29 QxN K-  
 K3 30 BxP Q-Q1 31 Q-R6+ R-N3 32 Q-B4+  
 K-Q2 33 B-R5 RxR 34 BxQ KxB 35 Q-Q5+  
 K-K2 36 QxP+ K-B1 37 QxQP P-R4 38 Q-  
 Q8+ K-N2 39 QxP+ K-B1 Draw Agreed.

RD2 BD4 Suits-Phillips SICILIAN 1  
 e4 c5 2 d4 cxd4 3 c3 Nf6 4 e5 Nd5 5  
 Nf3 e6 6 cxd4 Qc7 7 Bd2 a6 8 Nc3 Nx  
 c3 9 bxc3 b5 10 a4 bxa4 11 Rxa4 Bb7  
 12 Be2 Nc6 13 Qa1 a5 14 O-O Be7 15 R  
 b1 O-O 16 Rb2 Rfb8 17 Bb5 d6 18 Bxc3  
 Qxc3 19 c4 dxe5 20 dxe5 Bc5 21 Be3 B  
 xe3 22 fxe3 Qc5 23 Qa3 Qxa3 24 Rxa3  
 a4 25 Nd4 Be4 26 Rxb8+ Rxb8 27 Rxa4  
 g5 28 Ra1 Rc8 29 Rc1 Rc5 30 Nf3 g4

31 Nd2 Bc6 32 Nb3 Rxe5 33 Nd4 Rc5 34 Nxc6 Rxc6 35 c5 f5 36 Kf2 Kf7 37 Kg3 Kf6 38 e4 Ke5  
 39 Rc4 fxe4 40 Kxg4 Kd5 41 Rc1 Rxc5 42 Rxc5+ Kxc5 43 Kg3 Kd4 44 Kf2 Kd3 45 Ke1 Ke3 46 h3  
 h5 47 g4 hxg4 48 hxg4 Kf4 49 Ke2 Kxg4 50 Ke3 Kf5 51 Ke2 Kf4 52 Kf2 e3+ 53 Ke2 Ke4 54 Ke1  
 Kd3 55 Kd1 e2+ 56 Ke1 White Resigns. 0-1

RD2 BD3 Erickson-Motta FROM'S GAMBIT 1 f4  
 e5 2 fxe5 d6 3 exd6 Bxd6 4 Nf3 g5 5 d4 g4 6 Ng5 f5 7 e4 h6 8 e5 Be7 9 Nh3 gxh3 10 Qh5+ K  
 f8 11 Bc4 Rh7 12 c3 hxg2 13 Rg1 Bh4+ 14 Kd1 Rg7 15 Bxh6 Nxb6 16 Qxh6 Qg5 17 Qh8+ Ke7 18  
 Qxc8 Nd7 19 Qxc7 Qe3 20 Qd6+ Kd8 21 e6 Qxgl+ 22 Kc2 Qf2+ 23 Nd2 gl=Q 24 Rxgl Qxgl 25 ex  
 d7 Be7 26 Qd5 Qxh2 27 Qxb7 Rb8 28 Qxa7 Rxb2+ 29 Kxb2 Qxd2+ White Resigns. 0-1

RD3 BD1 Mayer-Motta QP COUNTER GAMBIT 1 e4 e5 2 Nd3 d5 3 Nxe5 dxe5 4 Bc4 Qg5 5 Bxf7+ Ke7 6 d4  
 Qxg2 7 Rf1 Nd7 8 Bxg8 Nxe5 9 dxe5 Rxg8 10 Qh5 g5 11 Nc3 Bh3 12 Nd5+ Ke6 13 Ne3 Qf3 14 Qx  
 h7 Bb4+ 15 c3 Bxf1 16 Nxf1 Bxc3+ 17 Bd2 Bd4 18 Ne3 Raf8 19 Qh6+ Kxe5 20 Nc4+ Kd5 21 Be3  
 Qh1+ 22 Ke2 Qxa1 23 Bxd4 Kxd4 24 Qe6 Rxf2+ 25 Kxf2 Rf8+ 26 Ke2 Qf1+ 27 Kd2 Qd3+ 28 White  
 Lost on Time. 0-1

RD4 BD1 Motta-Phillips FRENCH 1 d4 Nf6 2 Nc3 e6 3 e4 d5 4 Bg5 B  
 e7 5 Bxf6 Bxf6 6 Nf3 O-O 7 e5 Be7 8 h5 Bd7 9 Bd3 c5 10 Bxd2+ Kxh7 11 Ng5+ Bxg5 12 hxg5+  
 Kg8 13 Qh5 Black Resigns. 1-0

RD4 BD3 Jensen-Shughart BISHOP'S OPENING 1 e4 e5 2 B  
 c4 Nf6 3 d3 Bc5 4 Nc3 O-O 5 Bg5 c6 6 Qd2 b5 7 Bb3 a5 8 a3 d6 9 Nge2 Be6 Bxe6 fxe6 11  
 O-O Qb6 12 Be3 Nbd7 13 d4 exd4 14 Bxd4 Rad8 15 b4 Bxd4 16 Nxd4 Rfe8 17 Nf3 Nf8 18 Qf4 N  
 g6 19 Qg3 a4 20 Rad1 e5 21 Nh4 Nxb4 22 Qxh4 d5 23 exd5 cxd5 24 Rfel Qc6 25 Qg3 d4 26 Nb1  
 e4 27 Rd2 e3 28 fxe3 Ne4 29 Qf3 Rf8 30 Qe2 Nxd2 31 Nxd2 dxe3 32 Qxe3 Rde8 33 Qg3 Qxc2 34  
 Nf3 Rxe1+ 35 Qxe1 Rc8 36 Qe6+ Kh8 37 h3 h6 38 Ne5 Qc1+ 39 Kh2 Qf4+ 40 White Resigns. 0-1

RD5 BD2 Phillips-Mayer ALEKHINES 1 e4 Nf6 2 e5 Nd5 3 c4 Nb6 4 d4 d6 5 f4 dxe5 6 fxe5  
 c5 7 d5 e6 8 d6 Qh4+ 9 g3 Qe4+ 10 Qe2 Qxh1 11 Nf3 Nc6 12 Nc3 a6 13 Be3 Nxc4 14 O-O-O Nx  
 e3 15 Qxe3 Nxe5 16 Bb5+ axb5 17 Rxh1 Nxf3 18 Qxf3 Bxd6 19 Nxb5 Bb8 20 Qc3 O-O 21 Kb1 b6  
 22 Rd1 Bb7 23 Qe3 Bc6 24 Nc3 Bc7 25 h4 h6 26 g4 Bd8 27 g5 hxg5 28 hxg5 Be7 29 g6 Bf6 30  
 Qh3 Rfd8 31 Rf1 Kf8 32 gxf7 Kxf7 33 Qg3 Ra7 34 Qe3 Rd4 35 Re1 e5 36 Ne2 Rd6 37 Nc3 Rad7  
 38 Kc2 Re5 39 Rd1 b5 40 Qe2 b4 41 Rxe5 Rxe5 42 Nd1 Be4+ 43 Kb3 Bd5+ 44 Kc2 Rc4+ 45 Kb1 B  
 e4+ 46 White Resigns. 0-1

RD5 BD3 Shughart-Stubberud SICILIAN 1 e4 c5 2 Nf3 d6 3  
 Nc3 Nc6 4 d4 cxd4 5 Nxd4 g6 6 Bc4 Bg7 7 Be3 Nf6 8 Nxc6 bxc6 9 e5 Ng4 10 e6 Bxe6 11 Bxe6  
 Nxe3 12 Bxf7+ Kxf7 13 fxe3 Rf8 14 Qf3+ Kg8 15 Qxc3 Rc8 16 Qd5+ Kh8 17 Ke2 Qb6 18 Qb3 Q  
 a6+ 19 Ke1 Rb8 20 Qd5 Rxb2 21 Qd2 Qc4 22 Ne2 Rxc2 23 Rc1 Rxc1 24 Qxc1 Qxa2 25 Nf4 Rb8  
 26 White Resigns. 0-1