

Montana Chess News



Montana Chess Association

Editor - Dan McCourt
dmcc@rmttnet.com

HAPPY NEW YEAR!



YULETIDE CHESS SCENES PHOTOS COURTESY OF SPENCER OLMSTED

INSIDE THIS ISSUE:

Grand Prix entering 2004	2
Results from the Yuletide, Blizzard, and Turkey Open	3
Games from the Turkey Open	4-5
Miscellaneous games	6-7-8
JC Kuba....Endgame Ideas	9
Upcoming Events	10-11

Greetings of the New Year, chess fans!

The ol' crystal ball is running a murky picture for 2004. Chess events are lined up but not all the traditional tournaments have been scheduled and it remains to be seen just how the year will unfold.

The January Thaw and the two Bozeman February tournaments occupy their customary places on the calendar. Details appear on the upcoming events page in this issue.

The St. Paddy's Day Open and the Crocus Open have yet to be scheduled. And maybe those tournaments won't be happening this year. Any group that would like to use those traditional times for a tournament should contact Billings and Missoula organizers to see what's shaking and maybe get use of those times.

(continued on page 2)





Montana Chess Association

MCA Board Members

Nick Doulas—President (899-4664)
523 27th St. S. Great Falls, MT 59405
doulas41@bresnan.net

Jim Skovron—Vice-President (771-0630)
3405 Kingwood, Great Falls, MT 59404
skovron5@hotmail.com

Bill McBroom—Western V.P. (728-4654)
2321 Raymond, Missoula, MT 59802
whm@selway.umt.edu

Haluk Beyenal—Eastern V.P. (994-2269)
118F Julia Martin Drive,
Bozeman, MT 59715
beyenal@erc.montana.edu

Dan McCourt—Sec/Treas/Editor
721-0254 dmcc@rmttnet.com
608 West Central, Missoula, MT 59801

Montana Chess News is published by the Montana Chess Association, an affiliate of the U.S. Chess Federation. Subscription and membership in the MCA is \$12/yr regular, \$6/yr junior (Under 20), \$15 Family. Discounted 3year rate: \$25 regular, \$12 junior, \$35 family. First time players who are also new to the USCF shall have their first year's membership fee waived

Editor—Dan McCourt

608 West Central

Missoula, MT 59801

E-mail: dmcc@rmttnet.com

Publishing Schedule:

Issue 1—Jan 12, Issue 2—April 1, Issue 3—June 1, Issue 4—Sept 1, Issue 5—Nov 1. Deadline for most submissions is ten days before publication date.



(continued from front page)

The details for the 69th Montana Open have been worked out and also appear in this issue on the upcoming events pages. Thanks to our Bozeman organizers, Steve Scarff and Conrad Donovan, for making time in their busy December schedules to check out the local facilities. The Grantree Inn rated the best overall for what the MCA needs in a State Open playing site.

Missing from the action in 2004 will be former Montana Champion, Jan Johansson. After 30+ years of chess, Jan is looking at other pursuits for his leisure time. Jan will be missed much for his top-flight competitiveness. He assures us though, that the friendship will still be there and he will be visiting occasional tournament sites to renew old acquaintances. Best wishes to Jan!

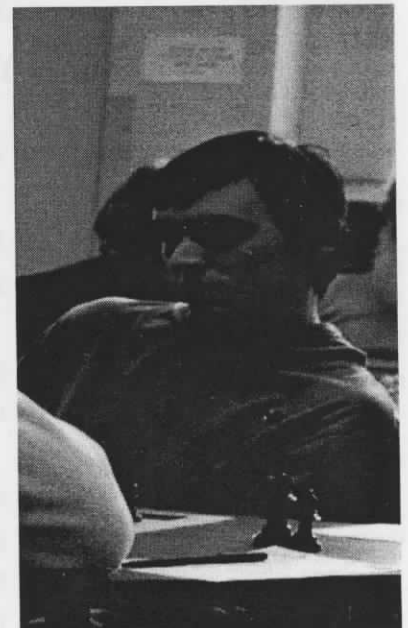
Those who are wondering about the 2004 Montana Junior Championship can rest assured that the MCA will soon have the tournament scheduled. All current junior members will be contacted by special notice if it happens that the event is scheduled before the next newsletter comes out.

Unrateds=tournament opponents average + 400(W-L)/N
where N=number of games vs rated opponents if >zero
Mileage bonus: LT 50=1.0; 50-150=1.33; 151-250=1.68; GT 251=2.0
GP=(rds/5) x (11-place) x (avg rating/1500) x mileage bonus

The 2003-2004 Grand Prix standings (as of the Yuletide)

- Sergiy Dzyuban 40.4
- Eric Hongisto 20.4
- Ron Erickson 15.8
- Dan McCourt 15.1
- Henry Pallares 11.6
- Kirk Lundby 11.6
- Greg Nowak 10.6
- J. Michael Jensen 8.9
- Jim Skovron 7.3
- Doug Hansen 7.3
- Emil Mammadov 7.0

(Thanks to Bill McBroom for ciphering the numbers. Let us know if you ciphered otherwise.)



GRAND PRIX LEADER, SERGIY DZYUBAN, SURVEYING HIS 2ND ROUND GAME AT THE TURKEY OPEN

2003 Turkey Open standings

Directed by Bill McBroom

#	Name	Rtng	Rd 1	Rd 2	Rd 3	Rd 4	Rd 5	Tot
1	Nowak, Gregory W	2135	W17	D4	D3	W9	W8	4.0
2	Dzyuban, Sergiy	2122	L9	W20	W11	W15	W3	4.0
3	McClary, Lewis	2072	W16	W15	D1	W5	L2	3.5
4	Julian, John C	1922	W20	D1	D9	W12	D6	3.5
5	Buck, Stephen	1704	W13	D8	W10	L3	W15	3.5
6	Steinocher, Kirk	1854	W18	W21	H--	D8	D4	3.5
7	Jensen, J Michael	1907	H--	U--	W17	W19	W10	3.5
8	Campbell, Matthew	2084	W11	D5	W14	D6	L1	3.0
9	Martin, Robert	1617	W2	D10	D4	L1	D12	2.5
10	Hongisto, Eric	2096	W19	D9	L5	W14	L7	2.5
11	Brendemihl, Steve	1442	L8	W23	L2	D13	W19	2.5
12	Erickson, Ron	1706	L21	W18	W16	L4	D9	2.5
13	Tamang, Stephen	1231	L5	D19	D20	D11	W21	2.5
14	Weyland, Phillip M	1711	W22	H--	L8	L10	W16	2.5
15	McCourt, Daniel J	1708	W23	L3	W21	L2	L5	2.0
16	Newhouse, Ryan W	1148	L3	B--	L12	W23	L14	2.0
17	Pallares, Henry R	1676	L1	W22	L7	W21	U--	2.0
18	Weyland, Ron	1400	L6	L12	L19	W20	W22	2.0
19	Griffin, David B	1445	L10	D13	W18	L7	L11	1.5
20	Morton, Jerry	1445	L4	L2	D13	L18	B--	1.5
21	Kirlin, Patrick M.	1277	W12	L6	L15	L17	L13	1.0
22	Hay, John	1335	L14	L17	L23	B--	L18	1.0
23	Doulas, Nick J	1284	L15	L11	W22	L16	U--	1.0



Ron Erickson contemplating

SwissSys Standings. Yuletide Open

#	Name	Rtng	Rd 1	Rd 2	Rd 3	Rd 4	Rd 5	Tot
1	Hongisto, Eric	2033	W12	W10	D7	W2	D3	4.0
2	Dzyuban, Sergiy O	2122	W14	D4	W8	L1	W5	3.5
3	McCourt, Daniel	1690	L6	W13	W4	W10	D1	3.5
4	Mammadov, Emil	1513	W8	D2	L3	D9	W7	3.0
5	Pallares, Henry R	1606	L10	W11	W6	W7	L2	3.0
6	Lundby, Kirk O	1346	W3	L7	L5	W12	W10	3.0
7	Olmsted, Spencer	1605	W13	W6	D1	L5	L4	2.5
8	Duke, David A	1790	L4	W9	L2	D11	W14	2.5
9	Beyenal, Haluk	1743	D11	L8	D14	D4	W13	2.5
10	Min, Kyungmin	1222	W5	L1	W12	L3	L6	2.0
11	Tamang, Stephen	1361	D9	L5	D13	D8	D12	2.0
12	Scarff, Steven R	1525	L1	W14	L10	L6	D11	1.5
13	Kauffman, Matthew L	unr.	L7	L3	D11	D14	L9	1.0
14	Fusselman, Stephen	1574	L2	L12	D9	D13	L8	1.0

□ D. McCourt,1690
 ■ K. Lundby,1346
 Yuletide

1.d4 e6 2.Nf3 d5 3.Bf4
 Bd6 4.Bg3 Bxg3 5.hxg3
 Nf6 6.Nbd2 Nbd7 7.c3 0-0
 8.Qc2 h6 9.e3 Re8 10.Be2
 e5 11.Nxe5 Nxe5 12.dxe5
 Rxe5 13.Nf3 Rh5 Diagram



14.Rxh5? Nxh5 15.0-0-0
 Nf6 16.Nd4 Ne4 17.Bf3 c5
 18.Bxe4 cxd4 19.Rxd4 Be6
 20.Qd2 Qa5 21.Bb1 g6
 22.e4 dxe4 23.Bxe4 Qxa2
 24.Rd8+ Rxd8 25.Qxd8+
 Kg7 26.Qd4+ Kh7 27.Bb1
 Qc4 28.Qxc4 Bxc4 29.Be4
 b6 30.Kd1 f5 31.Bb7
 Black goes on to pick up the
 biggest upset among the non-
 provisionally rated players at
 the Yuletide Open.

SwissSys Standings. Blizzard Open

#	Name	Rtng	Rd 1	Rd 2	Rd 3	Rd 4	Rd 5	Tot
1	Dzyuban, Sergiy O	2122	W10	W6	D2	W4	W5	4.5
2	Hongisto, Eric	1926	W4	W8	D1	W6	D7	4.0
3	Tamang, Stephen	1328	W7	D9	L4	D5	W10	3.0
4	Scarff, Steven R	1621	L2	W10	W3	L1	D8	2.5
5	Lundby, Kirk O	1462	L9	W7	W8	D3	L1	2.5
6	Olmsted, Spencer	1660	W11	L1	W9	L2	H--	2.5
7	McCourt, Daniel	1655	L3	L5	W11	B--	D2	2.5
8	Min, Kyungmin	1222	B--	L2	L5	W11	D4	2.5
9	Beyenal, Haluk	1837	W5	D3	L6	L10	B--	2.5
10	Pallares, Henry R	1630	L1	L4	B--	W9	L3	2.0
11	Baines, Brandon L	1397	L6	B--	L7	L8	H--	1.5

□ R. Erickson,1706

■ P. Kirilin,1277

Santasriere's Folly Turkey Open Rd. 1

(Game/60) 1.Nf3 d5 2.b4 Nf6 3.e3 Bg4 4.d4 e6 5.a3 Bd6 6.Nbd2 0-0 7.c4 c6 8.Be2 Nbd7 9.Bb2 Re8 10.0-0 e5 11.dxe5 Nxe5 12.Nxe5 Bxe2 13.Qxe2 Bxe5 14.Bxe5 Rxe5 15.Nf3 Re4 16.Rad1? Rxc4 17.Ne5 Rh4 18.g3 Rh3 19.Kg2 Qc8 20.f3 h5 21.Nd3 g5 22.Nf2 g4 23.Nxh3 gxh3+ 24.Kg1 Qe6 25.Qd3 Kh8 26.Qd4 b6 27.f4 Qf5 28.Qe5 Qg6 29.Qg5 Rg8 30.Qxg6 Rxg6 31.f5 Rg5 32.Rf4 Ng4 33.e4 Ne3 34.Rd3 Ng2 35.Rf2 h4 36.exd5 hxg3 37.Rxg2 hxg2 38.Kxg2 gxh2+ 39.Kxh2 cxd5 40.Rxd5 Kg7 41.Rd7 Rxf5 42.Rxa7 Rb5 43.Kg3 Kf6 44.Kf4 Ke6 45.Rc7 Kf6 46.Rc4 Kg6 47.a4 White's flag falls. 0-1

□ S. Dzyuban,2135

■ B. Martin,1617

Queen's Gambit Turkey Open Rd. 1

(Game/60) 1.d4 Nf6 2.c4 g6 3.Nf3 d5 4.Nc3 Bg7 5.cxd5 Nxd5 6.e4 Nxc3 7.bxc3 0-0 8.Ba3 Nd7 9.Qb3 e5 10.Bxf8 Qxf8 11.Bc4 c6 12.0-0 b5 13.Bd3 Rb8 14.Rab1 a5 15.Rfc1 b4 16.Qc2 exd4 17.cxb4 axb4 18.Qxc6 Ne5 19.Nxe5 Bxe5 20.Qc5 Bd6 21.Qxd4 Qe7 22.Rc6 Be5 23.Qc5 Qe8 24.Rxb4 Bd7 25.Rcb6 Rc8 26.Qe3 Be6 27.Qe2? Rc1+ 28.Qf1 Rxf1+ 29.Bxf1 Bxa2 30.Ra6 Be6 31.Rba4 Qd7 32.Ra3 Qd1 33.Rd3 Qh5 34.g3 Kg7 35.Ra5 Bc4 36.Rd7 Bxf1 37.Kxf1 Qh3+ 38.Kg1 Qxd7 39.Rxe5 Qd4 40.Re8 h5 41.h4 Kf6 42.e5+ Kf5 43.e6 fxe6 44.Rf8+ Ke5 45.Rf3 Qd1+ 46.Kg2 Qd5 0-1

□ E. Hongisto,2096

■ B. Martin,1617

French-Winawer Turkey Open Rd. 2

(Game/90) 1.e4 e6 2.d4 d5 3.Nc3 Bb4 4.e5 c5 5.a3 cxd4 6.axb4 dxc3 7.bxc3 Qc7 8.Qd4 Nc6 9.Bb5 Nge7 10.f4 Bd7 11.Bxc6 Nxc6 12.Qd3 0-0 13.Ba3 a6 14.Nf3 f5 15.0-0 Ne7 16.Rf2 Bb5 17.Qe3 Rac8 18.Bb2 Ng6 19.Nd4 Bd7 20.Qg3 Qd8 21.Re1 Qh4 22.Qxh4 Nxh4 23.g3 Ng6 24.h4 h5 25.Nb3 Rc7 26.Nc5 Bc8 27.Rf3 b6 28.Nb3 Bb7 29.Nd4 Kf7 30.b5 a5 31.Kf2 Rfc8 32.Ke2 Rc4 33.Ra1 Rxd4?! Diagram



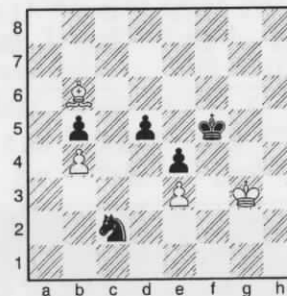
34.cxd4 Rxc2+ 35.Kd1 Rxb2 36.Rc1 Ne7 37.Rc7 Bc8 38.Rfc3 a4 39.Ra7 a3 40.Kc1 Rb4 41.Raxa3 Draw agreed 1/2-1/2

□ S. Buck,1704

■ M. Campbell,2087

English Turkey Open Rd.2

(Game 90) 1.c4 e5 2.Nc3 Nf6 3.Nf3 Nc6 4.g3 Bb4 5.Bg2 0-0 6.0-0 d6 7.Nd5 Nxd5 8.cxd5 Ne7 9.a3 Ba5 10.b4 Bb6 11.Qb3 c6 12.dxc6 Be6 13.Qd1 Nxc6 14.Bb2 a6 15.d3 Qf6 16.Rc1 Rac8 17.Qd2 h6 18.e3 Bg4 19.Ne1 Qe6 20.Nc2 d5 21.d4 e4 22.Na1 Bd8 23.Nb3 b6 24.Rc2 h5 25.Rfc1 h4 26.Qe1 hxg3 27.fxg3 Bg5 28.Nd2 Ne7 29.Nf1 Rxc2 30.Rxc2 Rc8 31.Qc1 Re8 32.Rc7 Qh6 33.Qc3 Nf5 34.Bc1 Be2 35.Qc6 Qxc6 36.Rxc6 Re6 37.Rxe6 fxe6 38.Kf2 Bb5 39.h4 Bh6 40.Bh3 Kf7 41.Nh2 Nxd4 42.Ng4 Nb3 43.Bb2 Nd2 44.Nxh6+ gxh6 45.g4 Nc4 46.Bc1 Ne5 47.Kg3 Nd3 48.Bd2 e5 49.Bc3 Kf6 50.Bf1 Nc1 51.Bxb5 axb5 52.Bb2 Nb3 53.g5+ hxg5 54.hxg5+ Kxg5 55.Bxe5 Nd2 56.Bd4 Nc4 57.Kf2 Kg4 58.Kg2 Kf5 59.Kg3 Nxa3 60.Bxb6 Nc2



Draw agreed diagram 1/2-1/2



□ G. Nowak,2147

■ J. Julian,1922

English Turkey Open Rd. 2

(Game/90) 1.g3 g6 2.Bg2 Bg7 3.c4 e5 4.Nc3 Nc6 5.Rb1 Nge7 6.e3 0-0 7.Nge2 d6 8.d3 Be6 9.Nd5 Rb8 10.0-0 b5 11.b3 f5 12.Bd2 Bf7 13.Qc2 b4 14.d4 Nxd5 15.Bxd5 Qd7 16.Bxf7+ Rxf7 17.d5 Nd8 18.f3 a5 19.e4 Nb7 20.Be3 Rbf8 21.Kg2 f4 22.Bg1 fxg3 23.hxg3 Bh6 24.Qd3 Rf6 25.Rb2 Nd8 26.Be3 Bxe3 27.Qxe3 Nb7 28.Ng1 Nc5 29.Nh3 Qg7 30.Re2 h6 31.g4 g5 32.Rc2 Qg6 33.Rh1 Kg7 34.Rcc1 Qf7 35.Ng1 Rh8 36.Rh5 Rf4 37.Ne2 Rf6 38.Ng3 Re8 39.Rch1 Rh8 40.Nf5+ Diagram



Rxf5 41.gxf5 Qf6 42.R5h2 K' 43.Qe2 Kg7 44.Kf1 Kf8 45.Qd2 Kg 46.Rg2 Nd7 47.Rh3 Kf8 48.Qb2 Kg7 49.a3 Nf8 50.Rd2 g4 51.Rg3 h5 52.fxg4 hxg4 53.Rdg2 Scoresheets incomplete but Black is able to hold the game in spite of serious time pressure. 1/2-1/2

□ G. Nowak,2135

■ L. McClary,2072

English

1.g3 Nf6 2.c4 g6 3.Bg2 Bg7 4.Nc3 d6 5.d4 0-0 6.Nf3 Nc6 7.0-0 Bg4 8.Be3 Qd7 9.Qd2 Rfd8 10.Rad1 Bh3 11.d5 Na5 12.b3 c5 13.dxc6 Nxc6 14.Bh6 Bh8 15.Qg5 Bxg2 16.Kxg2 Ng4 17.Nd5 Nxh6 18.Qxh6 Bg7 19.Qf4 Qf5 20.Qxf5 gxf5 21.Ne3 e6 22.Nc2 a5 23.Nfd4 d5 24.Nxc6 bxc6 25.c5 Kf8 26.e3 Ke8 27.Nd4 Kd7 28.Rb1 Bf8 29.Rfc1 Rdb8 30.f4 Kc7 31.Kf3 h5 32.Rc2 Be7 33.h3 Rg8 34.h4 Bf6 35.Kf2 Bxd4 36.exd4 Rgb8 37.Ke3 Rb4 38.a3 Rb5 39.Rcb2 Rab8 40.Kd3 R5b7 41.Kc3 Rb5 42.Ra2 R5b7 43.Rab2 draw agreed 1/2-1/2

□ S. Buck,1704
■ E. Hongisto,2096
Queen's Gambit Turkey Open Rd. 3

1.c4 Nf6 2.Nc3 e6 3.Nf3 c5 4.d4 a6
5.e3 b6 6.Be2 Bb7 7.0-0 d5 8.b3
Be7 9.Bb2 0-0 10.Ne5 cxd4 11.Qxd4
dxc4 12.Qxd8 Rxd8 13.Nxc4 Nbd7
14.Rfd1 Rab8 15.Nd6 b5 16.Nxb7
Rxb7 17.Rac1 Nb6 18.Rxd8+ Bxd8
19.Rd1 Rd7 20.Rxd7 Nfxd7 21.Bf3 b4
22.Ne4 Bc7 23.h3 a5 24.Kf1 a4
25.bxa4 Nxa4 26.Ba1 f5?? Diagram



27.Ng5 Be5 28.Bxe5 Nxe5 29.Bd1
Nc5 30.Bb3 Nxb3 31.axb3 Nc6
32.Nxe6 Kf7 33.Nd4 Na5 34.Ke2 Kf6
35.Kd3 Ke5 36.f3 Kd5 37.e4+ fxe4+
38.fxe4+ Ke5 39.g3 h6 40.Nf3+ Ke6
41.Nd2 g6 42.Kd4 Nc6+ 43.Kc5 Kd7
44.Nc4 h5 45.Nb6+ Kc7 46.Nd5+ Kb7
47.Nxb4 Na5 48.Kd6 Nxb3 49.e5 Nd4
50.e6 Kc8 51.Ke7 Nf5+ 52.Kf7 Nd6+
53.Kxg6 Kd8 54.Nd5 Ke8 55.Kxh5
Nf5 56.g4 Ng7+ 57.Kg6 Nxe6 58.h4
Kf8 59.h5 Kg8 60.h6 Nf8+ 61.Kh5
Kf7 62.Nf4 Nh7 63.g5 Kg8 64.Ne6
Nf8 65.Nxf8 Kxf8 66.g6 Kg8 67.Kg5
Kh8 68.Kf6 Kg8 69.g7 Black resigns
1-0

□ B. Martin,1617
■ J. Julian,1922
Turkey Open English Rd. 3

1.Nf3 Nf6 2.c4 g6 3.g3 Bg7 4.Bg2
0-0 5.0-0 d6 6.d4 c5 7.dxc5 dxc5
8.Nc3 Nc6 9.Bd2 Be6 10.b3 Qc8
11.Ng5 Bd7 12.Rc1 h6 13.Nge4 Nxe4
14.Nxe4 b6 15.Bc3 Bh3 16.Bxg7 Kxg7
17.Qc2 Bxg2 18.Qb2+ Kh7 19.Kxg2
Nd4 20.e3 Qc6 21.f3 Nf5 22.Qf2
½-½

□ L. McClary,2072
■ S. Buck,1704
English Turkey Open Rd. 4

1.Nf3 c5 2.g3 Nc6 3.Bg2 Nf6 4.d3 d5
5.Nbd2 e5 6.e4 dxe4 7.dxe4 Be7
8.0-0 0-0 9.Re1 Qc7 10.c3 Rd8

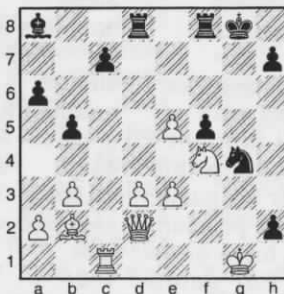
11.Qe2 h6 12.Nh4 g6 13.Nc4 Kh7
14.f4 exf4 15.Bxf4 Qd7 16.Rad1 Qe8
17.e5 Nh5 18.Rxd8 Qxd8 19.Rd1 Qf8
20.Bc1 Be6 21.Nd6 Bxd6 22.exd6 Rd8
23.Nxg6 Kxg6 24.Be4+ f5 25.Bxc6
Rxd6 26.Rxd6 Qxd6 27.Bxb7 Bxa2
28.Bf3 Ng7 29.Bf4 Qe6 30.Qd2 Kh7
31.Be3 c4 32.Bxa7 Qe7 33.Be3 Qe6
34.Kf2 Ne8 35.Bf4 Nf6 36.Kg2 Ne4
37.Qd4 Bb3 38.g4 Kg6 39.gxf5+ Kxf5
40.Bg3 Nf6 41.Bh4 Kg6 42.Bf2 Bc2
43.Qf4 Be4 44.Be3 Bxf3+ 45.Kxf3
Qh3+ 46.Qg3+ Qxg3+ 47.Kxg3 h5
48.Kf4 Ng4 49.Bg1 Nh6 50.Ke5 Nf7+
51.Kd5 Ng5 52.Ba7 Kf5 53.Kxc4 Kg4
54.b4 Kh3 55.Bb8 Nf3 56.b5 Nxh2
57.Bxh2
1-0

□ G. Nowak,2135
■ M. Campbell,2084
Turkey Open English/Dutch

1.g3 f5 2.Bg2 Nf6 3.c4 e5 4.Nc3 Be7
5.d3 d6 6.Nf3 0-0 7.c5 Nc6 8.cxd6
Qxd6 9.0-0 a6 10.Nd2 Be6 11.b3
Rad8 12.Nc4 Qd7 13.Bb2 b5 14.Bxc6
Qxc6 15.Nxe5 Qe8 16.e3 Bd6 17.Ne2
Bd5 18.f4 Bxe5 19.fxe5 Ng4 20.Qd2
Ba8 21.Rac1 g5 22.h3? Qh5!
Diagram



23.h4 gxh4 24.Nf4 Qh6 25.Rf2 hxg3
26.Rg2 Qh2+! 27.Rxh2 gxh2+
Diagram



28.Qxh2 Nxh2 29.Kxh2 Bf3 30.e6
Rc8 31.Kg3 Bg4 32.Nd5 Rfe8
33.Nf6+ Kf8 34.Ba3+ Kg7 35.Nxe8+
Rxe8 36.Rxc7+ Kf6 37.e7 a5 38.Bc5
h5 39.Bd6 Ke6 40.Bc5 Kf7 41.Rc6

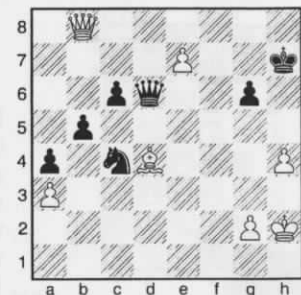
Be2 42.d4 a4 43.d5 Rg8+ 44.Kf2
Bd3 45.Rh6 Be4 46.d6 Bc6 47.bxa4
bxa4 48.Bd4 Rg2+ 49.Kf1 Rxa2
50.Rf6+ Kg8 51.Rf8+ Kh7 Scoresheets
end here with white going on to win the
ending.
1-0

□ M. Jensen,1907
■ E. Hongisto,2096
Turkey Open Center Counter Def. Rd.

1.e4 d5 2.exd5 Nf6 3.d4 Bg4 4.Nf3
Qxd5 5.Nc3 Qa5 6.Bd2 c6 7.Be2
Nbd7 8.0-0 Qc7 9.Ne5 Be6 10.Bf4
Nxe5 11.Bxe5 Qa5 12.a3 Nd5 13.Ne4
f6 14.Bg3 0-0-0 15.Nc5 Nc7 16.b4
Qb6 17.Nxe6 Nxe6 18.Bg4 Kd7
19.Qe2 Ke8 20.Qxe6 Black resigns
1-0

□ R. Erickson,1706
■ B. Martin,1617
Turkey Open Santasiere's Folly Rd. 5

1.Nf3 Nf6 2.b4 g6 3.c4 Bg7 4.d4 d5
5.e3 0-0 6.Nbd2 c6 7.Be2 Na6 8.Rb1
Nc7 9.0-0 Bf5 10.Rb3 dxc4 11.Nxc4
Be6 12.Rb1 Ncd5 13.Qc2 Bf5 14.Bd3
Bxd3 15.Qxd3 b5 16.Na5 Nxb4
17.Rxb4 Qxa5 18.a3 Nd5 19.Rb3 Qc7
20.Bb2 a5 21.Ba1 a4 22.Rbb1 Qd7
23.Rfc1 Rac8 24.Rc5 Rc7 25.Rbc1
Rfc8 26.Ne5 Bxe5 27.dxe5 Qe6 28.e4
Nb6 29.R5c2 Nc4 30.Qg3 Rd7 31.f4
Rcd8 32.h4 Rd1+ 33.Kh2 R8d3
34.Qg5 Rxc1 35.Rxc1 Qd7 36.f5 Rd1
37.fxg6 hxg6 38.e6 Qd6+ 39.e5 Qd3
40.Qxe7 fxe6 41.Qxe6+ Kh7 42.Qe7+
Kh6 43.Qf8+ Kh7 44.Qf7+ Kh6
45.Qf4+ Kh7 46.Rxd1 Qxd1 47.Bd4
Qh5 48.e6 Qf5 49.Qc7+ Kh6 50.e7
Qe6 51.Qf4+ Kh7 52.Qb8 Qd6+
Diagram



White accepts a draw but 53. Be5 should
win.
½-½



□ H. Beyenal,1741
 ■ J. Drake,2142
 Governor's Cup 2003 Q.G.-Slav Defense

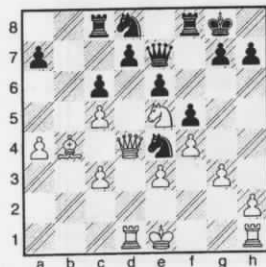
1.d4 d5 2.c4 c6 3.Nc3 Nf6
 4.Nf3 e6 5.Bg5 dxc4 6.e4
 b5 7.Be2 Nbd7 8.0-0 h6
 9.Bh4 Be7 10.d5 exd5
 11.exd5 Nxd5 12.Nxb5
 Bxh4 13.Nd6+ Kf8 14.Bxc4
 N7b6 15.Nxf7 Kxf7 16.Ne5+
 Kg8 17.Qh5 Qg5 Diagram



18.Qe8+?? Qf7+ followed by
 Bd3+ should win Kh7
 19.Bd3+ Bf5 20.Qxc6 Raf8
 21.Qb5 Nf4 22.Bxf5+ Qxf5
 and black goes on to win
 0-1

□ H. Beyenal,1741
 ■ R. Deike,2051
 Governor's Cup 2003 Rd 3 Dutch Def.

1.d4 e6 2.c4 f5 3.Nc3 Nf6
 4.e3 Bb4 5.a3 Bxc3+
 6.bxc3 0-0 7.g3 Ne4 8.Qc2
 b6 9.f3 Nd6 10.a4 Nc6
 11.Ba3 Na5 12.Bb4 Nab7
 13.c5 bxc5 14.dxc5 Nf7
 15.Ba6 c6 16.Rd1 Ne5
 17.f4 Ng4 18.Qd2 Nf6
 19.Nf3 Qe7 20.Qd4 Nd8
 21.Bxc8 Rxc8 22.Ne5 Ne4
 Diagram



23.Ba5? having traded a
 good bishop for a bad one,
 white should not hesitate to
 capture d7 with all the
 bennies thereof Nb7 24.Bb4
 Rc7 25.Ba3 Nd8 26.0-0
 Nf7 27.Nc4 Rb7 28.Na5

Rbb8 29.c4 Nf6 30.Rb1
 Qd8 31.Bb4 Qc7 32.Bc3
 Rxb1 33.Rxb1 Rb8 34.Qd3
 Rd8 35.Rd1 a6 36.Rb1
 Rb8 37.Rd1 Ne4 38.Be1
 Nxc5 39.Qa3 d6 40.Bb4
 Ne4 41.Be1 c5 42.Nb3 Qb7
 43.Nd2 Nxd2 44.Rxd2 Qb3
 45.Qxb3 Rxb3 46.Kf2 Kf8
 47.Ke2 Ke7 48.a5 Nh6
 49.h3 Ng8 50.Rc2 Nf6
 51.Bc3 g6 52.Bxf6+ Kxf6
 53.g4 e5 54.Rd2 Ke6
 55.fxe5 Kxe5 56.Rd5+ Ke6
 57.gxf5+ gxf5 58.e4 fxe4
 59.Rh5 Ra3 60.Rxh7 Ke5
 61.Rh5+ Kd4 62.Rd5+
 Kxc4 63.Rxd6 Kb4 64.Re6?
 taking on a6 will reduce the
 defensive chores Rxh3
 65.Rxe4+ Kxa5 66.Kd2 Kb5
 67.Kc2 c4 68.Re5+ Kb4
 69.Re7 black goes on to win
 0-1

□ H. Chiu,2027
 ■ JC Kuba,1887
 Governor's Cup 2003 Rd4 K.I.D.

(Game notes by JC Kuba)
 1.Nf3 Nf6 2.c4 d6 3.d4 g6
 4.g3 Bg7 5.Bg2 0-0 6.0-0
 Nbd7 7.Nc3 c5 8.b3 Rb8
 9.Bb2 a6 10.a4 cxd4
 11.Nxd4 Ne5 12.Qd2 Bd7
 13.Rab1 Qa5 14.Rfd1 Qb6
 15.Ba1 Nc6 16.Nf3 Bf5
 17.Rbc1 Diagram

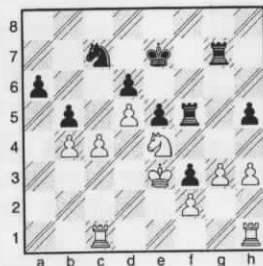


Be4?? I could have taken
 the b-pawn and had an
 advantage, but I thought I
 saw a variation where this
 was no good. After the game,
 when I looked at the position,
 I realized I must have been
 hallucinating. For some
 reason, at this point I started
 having brain farts. 18.Nd5
 Bxd5 19.cxd5 Ne4 20.Qe1
 Bxa1 21.Rxa1 Nb4
 I spent a lot of time looking at
 the reply, Ne5, but for some

reason, did not look at the
 obvious reply, Nd4 22.Nd4
 Nc5?? 23.a5 busted!
 1-0

□ JC Kuba,1887
 ■ Bob Holliman,2152
 Governor's Cup Rd 5 Nimzo-Ind. Def

1.d4 Nf6 2.c4 e6 3.Nc3
 Bb4 4.Bg5 The Leningrad
 variation c5 5.d5 h6 6.Bh4
 Qa5 This allows white to
 disrupt black's pawn structure
 but, also, allows black to put
 pressure on the 'g' file. 7.Bxf6
 gxf6 8.Qc2 d6 9.e3 e5
 10.Nge2 Trying to avoid
 doubled c-pawns, but better
 would have been Bd3 then
 Ne2. Bd7 11.a3 Na6
 12.Rc1 Bxc3+ 13.Nxc3 Nc7
 14.Qd2 a6 15.Ne4 Qxd2+
 16.Kxd2 Ke7 17.b4 f5
 18.Ng3 cxb4 19.axb4 Rhg8
 20.e4 f4 21.Ne2 f5 22.g3
 f3 23.Nc3 Raf8 24.Bd3 h5
 25.exf5 Bxf5 26.Bxf5 Rxf5
 27.Ke3 Rg4 28.Ne4 b5
 29.h3 Rg7 Diagram



Rg6 was needed 30.Rhd1
 h4 31.g4 Rf4 32.c5 Ne8
 33.Ra1 Rg7 34.Rxa6
 Rxe4+ 35.Kxe4 Rf4+
 36.Ke3 Rxb4 37.Ra7+ Kd8
 38.c6 better would be
 doubling the rooks on the a-
 file Nc7 39.Kxf3 Rb3+
 40.Ke4 Rb4+ 41.Kf5
 heading to h7 to support the
 g-pawn Rf4+ 42.Kg6 Rxf2
 43.g5 e4 44.Kh7 e3
 45.Rxc7 The g-pawn can't be
 stopped without losing the
 rook.
 1-0



□ S. Fusselman,1574
 ■ S. Scarff,1525
 Yuletide Open Rd 2 French

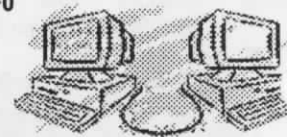
1.e4 e6 2.c4 c5 3.Nc3 Nc6
 4.f4 Bd6 5.e5 Bc7 6.Nf3
 d6 7.Ne4 dxe5 8.fxe5 Nxe5
 9.Nxc5 b6 10.Nb3 Bb7
 11.Be2 Nd3+ 12.Bxd3
 Qxd3 13.Qe2 Qxe2+
 14.Kxe2 Nf6 15.d4 0-0
 16.h3 Ne4 17.Ke3 Rac8
 18.Nbd2 Ng3 19.Rg1 Rfd8
 20.b3 Nf5+ 21.Kd3 e5
 22.d5 b5 23.Bb2 f6 24.g4
 Nd6 25.Rac1 bxc4+
 26.bxc4 Ba6 Diagram



27.Rge1 Nb7 28.Kc2 Ba5
 29.Kb3 Nc5+ 30.Kc2 Na4
 31.Re4 Rxd5 32.Kb3 Nc1
 33.Ka3 Rd3+ 34.Nb3 Rbb
 35.Re2 Bb4#
 0-1

□ K. Lundby,1462
 ■ D. McCourt,1655
 Blizzard 2003 Rd 2 Danish dec.

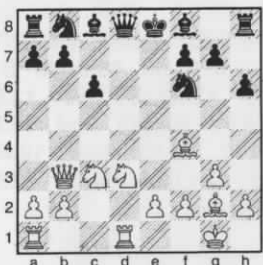
1.e4 e5 2.d4 exd4 3.c3
 Nf6 4.Bg5 Be7 5.Bxf6 Bxf6
 6.cxd4 d6 7.Nf3 0-0 8.Be2
 Re8 9.Nc3 Nc6 10.Bb5
 Bd7 11.0-0 a6 12.Bxc6
 Bxc6 13.d5 Bd7 14.Re1
 Re7 15.Re3 Qe8 16.Qe2
 Bg4 17.Re1 Bd4 18.Rd3
 Be5 19.h3 Bd7 20.Nxe5
 Rxe5 21.Re3 Rg5 22.e5
 dxe5 23.Rxe5 Rxe5
 24.Qxe5 Qxe5 25.Rxe5 Kf8
 26.Re2 Re8 27.Rxe8+ Kxe8
 black goes on to
 outmanuever white for the full
 point
 1-0



Visit us on the web at
montanachess.org
web-ballistics.com/mca

□ S. Tamang,1361
 ■ H. Beyenal,1743
 Yuletide 2003 English

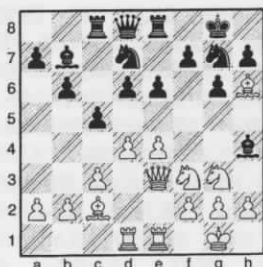
1.c4 Nf6 2.g3 d5 3.cxd5
 Qxd5 4.Nf3 e5 5.Nc3 Qa5
 6.Bg2 h6 7.0-0 e4 8.Ne1
 Qe5 9.d3 exd3 10.Nxd3
 Qd6 11.Bf4 Qd8 12.Qb3 c6
 13.Rfd1 Diagram



White can cash in from his better development with a combination beginning 13. Bxb8 and 14. Bxc6 Qb6 14.Qc2 g5 15.Be5 Nbd7 16.Ne4 Bg7 17.Nd6+ Kf8 18.Qc4 Nxe5 19.Nxe5 Be6 20.Ng6+ Kg8 21.Ne7+ Kf8 22.Ng6+ Kg8 23.Ne7+ Kf8 24.Ng6+ 1/2-1/2

□ D. Duke,1790
 ■ S. Tamang,1361
 Yuletide 2003 Colle System

1.d4 Nf6 2.Nf3 e6 3.e3 b6
 4.Bd3 Bb7 5.0-0 c5 6.c3
 Be7 7.Re1 0-0 8.Nbd2 d6
 9.Nf1 Nbd7 10.Ng3 Rc8
 11.e4 Ne8 12.Bc2 Bh4
 13.Qd3 g6 14.Bh6 Ng7
 15.Qe3 Re8?? 16.Rad1
 Diagram



Nxh4 wins a piece--or a queen Bxg3 17.fxg3 Nf6 18.Bg5 Ng4 19.Qf4 f6 20.Qxg4 fxg5 21.Nxg5 cxd4 22.Rxd4 Rc5 23.h4 Bc8 24.Qe2 Nh5 25.Kh2 e5 26.Rd2 Kg7 27.Qd1 h6

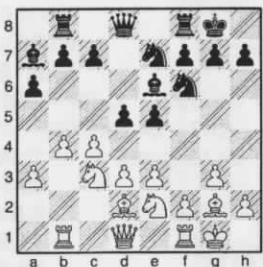
28.Rxd6 Qe7 29.Nh3 Rf8
 30.Re3 Nf6 31.Red3 Ng4+
 32.Kg1 Nf6 33.Rf3? Bg4
 34.Qd3 Bxf3 35.gxf3 Rcc8
 draw agreed
 1/2-1/2

□ S. Tamang,1361
 ■ S. Scarff,1525
 Yuletide 2003 English

1.c4 Nf6 2.g3 e6 3.Bg2
 Nc6 4.Nc3 Bc5 5.e3 a6
 6.Nge2 Rb8 7.0-0 d6 8.a3
 Bd7 9.b4 Ba7 10.Bb2 b5
 11.cxb5 axb5 12.Rc1 0-0
 13.Nxb5! Rxb5 14.Bxc6
 Rh5? 15.Bxf6 gxf6 16.Nf4
 Draw agreed
 1/2-1/2

□ G. Nowak,2147
 ■ R. Hall,1588
 Jack Frost's Deep Freeze Rd1

1.g3 e5 2.c4 Nf6 3.Bg2
 Bc5 4.e3 Nc6 5.a3 a6
 6.Nc3 0-0 7.d3 Rb8 8.b4
 Ba7 9.Rb1 d6 10.Nge2 Ne7
 11.0-0 Be6 12.Bd2 d5
 Diagram



13.c5 b6 14.d4 e4 15.Nf4
 c6 16.Nxe6 fxe6 17.f3 exf3
 18.Qxf3 Qd7 19.Qe2 b5
 20.Qd3 Rbe8 21.Bh3 Ng6
 22.a4 Bb8 23.axb5 axb5
 24.e4 Nxe4 25.Nxe4 dxe4
 26.Qxe4 Qd5 27.Qxd5 exd5
 28.Rfe1 Re4 29.Rxe4 dxe4
 30.Bg2 Rd8 31.Bc3 Ne7
 32.Bxe4 Nd5 33.Bxd5+
 Rxd5 34.Ra1 Rd8 35.Ra6
 Rc8 36.Bd2 Kf7 37.Rb6
 Ke6 38.Rb7 Kd5 39.Rxg7
 Kxd4 40.Rxh7 Be5 41.Kg2
 Rf8 42.h3 white goes on to
 win in a time scramble
 1-0



□ D. McCourt,1690
 ■ B. Hayes,1445
 Jack Frost's Deep Freeze Rd 2

1.e3 e5 2.a3 f5 3.Qh5+ g6
 4.Qd1 Nf6 5.h3 d6 6.d3
 Nc6 7.Nd2 Bg7 8.Ne2 Qe7
 9.b3 Be6 10.Bb2 Rd8
 11.Nc3 d5 12.Ne2 0-0
 13.Ng1 e4 14.d4 a6 15.Bc1
 Qd6 16.Be2 Ne7 17.Nf1 c5
 18.c3 cxd4 19.cxd4 Rc8
 20.Bd2 Nc6 21.b4 Rf7
 22.Rc1 b5 23.g4 f4 24.exf4
 Nxd4 25.Rxc8+ Bxc8
 26.Be3 Diagram



Nxe2? 27.Nxe2 Nd7 28.g5
 Bb7 29.Nh2 Nb6 30.Ng4
 Nc4 31.Bc5 Qd7 32.h4??
 Qxg4 33.Bd4 Nb2 34.Qc2
 Nd3+ 35.Kf1 Nxf4 36.Rg1
 Qh3+ 37.Ke1 Nxe2 38.Rg3
 Nxc3 39.fxc3 Qf1+ 40.Kd2
 Bxd4 41.Qb3 Rf2#
 1-0

□ M. Jensen,1940
 ■ R. Carpenter,1814
 Fall Quick Rd 1 Pirc

1.e4 d6 2.d4 Nf6 3.Nc3 g6
 4.Nf3 Bg7 5.Be2 0-0 6.0-0
 Na6 7.Bg5 h6 8.Be3 c5
 Diagram



9.d5 Nc7 10.h3 b5 11.Nd2
 Bb7 12.a4 a6 13.f3 b4
 14.Ncb1 Nh5 15.Nc4 Ne8
 16.Qe1 e5 17.Nbd2 Nf4
 18.Qf2 f5 19.Rfe1 Nxe2+
 20.Qxe2 f4 21.Bf2 Qc7
 22.Qd3 g5 23.Nb3 Rf6

24.Nba5 Rg6 25.Kh2 Bf6
 26.Rg1 h5 27.b3 g4
 28.Kh1 Diagram



0-1

□ B. McBroom,1750
 ■ M. Jensen,1940
 UCCC Fall Quick Sicilian

1.e4 c5 2.Nf3 Nc6 3.Bb5
 g6 4.0-0 Bg7 5.Re1 d6
 6.Bxc6+ bxc6 7.c3 d5
 8.Qa4 Bd7 9.d3 e6 10.Be3
 c4 11.dxc4 dxe4 12.Nd4
 Ne7 13.Qc2 e5 14.Nb3 Bf5
 15.N1d2 0-0 16.Rad1 Qd3
 17.Qc1 Rfd8 18.Nc5 Qd6
 Diagram



19.Ncxe4 Qc7 20.Nc5 Bg4
 21.f3 Bf5 22.Nf1 Qa5
 23.Rxd8+ Qxd8 24.Ng3
 Qa5 25.a3 Qc7 26.Rd1
 Rd8 27.Nxf5 Nxf5 28.Bf2
 Bh6 29.Rxd8+ Qxd8
 30.Qe1 Qd6 31.Ne4 Qd3
 32.Bxa7 Kg7 33.Nf2 Ne3??
 34.Nxd3 white goes on to win
 1-0



□ Dan McCourt, 1717

■ J. Michael Jensen, 1915

Sicilian (Wing Gambit) UCCC Champ. Rd4

1.e4 c5 2.Nf3 d6 3.b4?! cxb4 4.d4 Nf6 5.Bd3 Nc6 6.0-0 Bg4 7.Be3 (c3?!) e6 8.Nbd2 Be7 9.h3 Bxf3 10.Nxf3 0-0 11.Qd2 d5 12.Ng5 h6 13.e5 hxg5 14.exf6 Bxf6 15.g4 Nxd4 16.Kg2 Nc6 17.h4 Bc3 18.Qe2 Bxa1 19.Rxa1 gxh4 20.g5 Ne5 21.Qh5 Nxd3 22.cxd3 d4 23.Bf4 Qd5+ 24.f3 Rac8 25.Qxh4 Rc2+ 26.Kg3 e5 27.Bd2!? Diagram



f5 28.g6 f4+ 29.Kg2 Rf6 30.Qh7+ Kf8 31.Kf1 Rb6 32.Qh8+ Qg8 33.Qh5 Rcc6 34.Qf5+ Ke8 35.Kf2 Qe6 36.Qh5 Qxg6 37.Qh8+ Kf7 38.Rg1 Qh6 39.Qd8 Rc2 40.Qd7+ Kg8 41.Ke1 Rxd2 42.Qc8+ Kh7 43.Qf5+ Rg6 White resigns

□ D. McCourt, 1708

■ M. Jensen, 1914

UCCC 1st Fall Sicilian (wing gambit)

1.e4 c5 2.Nf3 d6 3.b4 cxb4 4.d4 Nf6 5.Bd3 Nc6 6.h3 e6 7.0-0 Be7 8.Bg5 0-0 9.Nbd2 b6 10.Re1 Bb7 11.Nf1 Rc8 12.Ng3 Na5 13.Qe2 Qc7 14.Rab1 Nc6 15.e5 dxe5 16.dxe5 Nd5 17.Qe4 Diagram



g6 18.Qh4 Nc3 19.Nh5 Rfd8 20.Nf6+ Bxf6 21.Bxf6 h5 22.Qg5 Kh7 23.Qxh5+ Black resigns 1-0



□ M. Jensen, 1940

■ D. McCourt, 1655

UCCC Midsummer G/29 Bishop's Opening

1.e4 e5 2.Bc4 Nf6 3.d3 c6 4.Nc3 d5 5.exd5 cxd5 6.Bb3 h6 7.Nf3 Nc6 8.h3 Bb4 9.Bd2 0-0 10.0-0 a6 11.Re1 Re8 12.a3 Ba5 13.Na2 Bc7 14.Nb4 Qd6 15.Bc3 d4 16.Bd2 a5 17.Nxc6 Qxc6 18.a4 Bf5 19.Re2? Diagram



Bxh3 20.Re1 Bg4 21.Qe2 Qd6 22.Rad1 Bxf3 23.Qxf3 Kh7 24.Bxf7 Re7 25.Bb3 Rae8 26.c3 e4 Diagram



27.dxe4 Nxe4 28.cxd4 Ng5 29.Bxg5 Rxe1+ 30.Rxe1 Rxe1# 0-1

□ M. Jensen, 1940

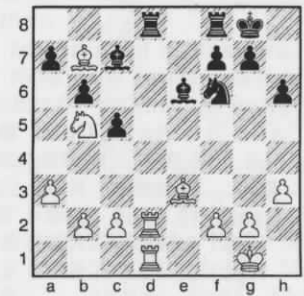
■ D. McCourt, 1655

UCCC Last Fall g/29 Bishop's Opening

1.e4 e5 2.Bc4 Nf6 3.d4 white adds a drop of poison to the opening Nxe4 4.dxe5 Qh4 Diagram



5.Qf3 Ng5 6.Qd5 Qe4+ 7.Ne2 c6 8.Qxe4 Nxe4 9.0-0 d5 10.exd6 Bxd6 11.Nbc3 Nxc3 12.Nxc3 0-0 13.Bg5 Bf5 14.Rad1 Bc7 15.Bd3 Bg4 16.Rd2 h6 17.Be3 Nd7 18.h3 Be6 19.Rfd1 Nf6 20.a3 b6? 21.Ba6 Rad8 22.Bb7 c5 23.Nb5 Diagram



white takes over the position and goes on to win

□ M. Jensen, 1940

■ B. McBroom, 1755

UCCC G/29 Caro-Kahn

1.e4 c6 2.d4 d5 3.exd5 Qxd5 4.Nc3 Qa5 5.Nf3 Nf6 6.Bc4 Bf5 7.0-0 e6 8.Re1 Bb4 9.Bd2 0-0 10.a3 Bxc3 11.Bxc3 Qc7 12.Nh4 Bg4 13.Qd3 Nbd7 14.h3 Bh5 15.Bd2 Nb6 16.Ba2 Rad8 17.Bg5 Nbd5 18.c4 Nf4 19.Qe3 Ng6 20.Bxf6 gxf6 21.Nf3 Bxf3 22.Qxf3 Qf4 23.Qxf4 Nxf4 24.Rad1 Kh8 25.Re4 Ng6 26.d5 f5 27.Red4 exd5 28.cxd5 cxd5 29.Rxd5 Rxd5 30.Rxd5 Nf4 31.Rxf5 Ne2+ 32.Kf1 Nd4 33.Rxf7 Rc8 34.g3 Rc1+ 35.Kg2 Ra1 36.Bd5 Rd1 37.Rxb7 Rd2 38.Be4 h5 39.b4 Re2 40.Bf3 Re5 41.Rxa7 Nxf3 42.Kxf3 Rf5+ 43.Kg2 Rd5 44.a4 Rd2 45.b5 Rb2 46.Ra6 Rb4 47.b6 Kg7 48.a5 Kf8 49.Ra7 Ke8 50.b7 Kd8 51.Ra8+ Kc7 52.b8Q+ Rxb8 53.Rxb8 Kxb8 white wins 1-0

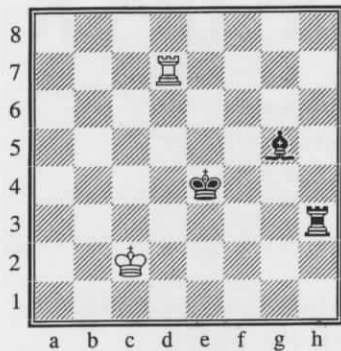




JC KUBA IDEAS FOR ENDINGS



VS



after 54.Kc2...

G. Nowak (2142) - J. Donaldson (2487)
2003 Collyer Memorial Round 4

This R+B vs R endgame from the game Nowak-Donaldson caught my attention. It is theoretically drawn, but it is one of those endings in which the R+B side can keep maneuvering around hoping the other side will make an error in time pressure. Here, black must trap the white king on the side of the board with the bishop and king then mate with the rook.

The position at left is from Andres Philidor, 1749. With white to move, it is typical of the setup that the side with R+B is trying to achieve. The bishop is both protecting the king's back and helping trap the black king. With white to move (Rf8), white can win.



The defending side has a couple positions that he can aim for to complicate things. One of these, shown at right, is called the Cochrane position.

Here white's king and bishop are one file further away from the black king and black is pinning white's bishop. Dvoretsky suggests that the black king move in the opposite direction of the white king. So, if white moves Ke5, then black should move Kc8 to make white's task more difficult.



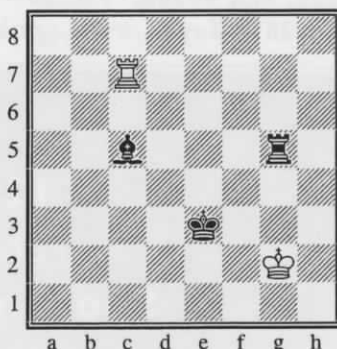
The books referred to at the end of this article go into a lot more depth as to how to play these positions.

When I first went through this ending, I wondered if there were positions that were lost for Greg but John missed. So, I went through the ending using Fritz with the Nalimov endgame tablebases linked in. I was surprised to find that Greg maintained a drawn position until he erred on his 82nd move. 54... Bf6 55.Rd1 Bd4 56.Rf1 Rh2+ 57.Kb3 Kd5 58.Rf5+ Be5 59.Rg5 Rb2+ 60.Ka3 [60.Ka4?? Kc4 Black can set up the Philidor position now and wins in this variation.] 60...Rb8 61.Ka2 Rb5 62.Rg4 Rb7 63.Ka3 Bd4 64.Rg8 Kc4 65.Rc8+ Bc5+ 66.Ka2 Rb5 67.Rg8 Rb7 68.Rc8 Rh7 69.Rc6 Rh2+ 70.Kb1 Kb4 71.Kc1 (Diagram below)



Now we have the "Cochrane" position where white pins the black bishop forcing black to move his king. 72.Rc8 Kd4 73.Rc7 Rh5 74.Kc2 [74.Kd1?? Kd3 Black can set up a Philidor like position here too.] 74...Kc4 75.Kd2 Rh2+ 76.Ke1 Kd4 77.Kf1 Rc2 78.Rc8 Ke3 79.Rc7 Rf2+ 80.Kg1 Rf5 81.Kg2 Rg5+

White to move

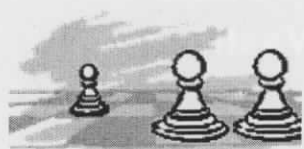


after 81...Rg5+

82.Kf1?? losing move [82.Kh3=; 82.Kh1=] 82...Kd3 83.Rd7+ Bd4 Now black has achieved a Philidor like position and white is lost. I assume the only reason white continued was that black was in time trouble. 84.Rxd4+ Kxd4 85.Kf2 Ke4 86.Ke2 Rg2+ 87.Kd1 Kd3 88.Kc1 Rd2 89.Kb1 white resigns 0-1

references:

- Dvoretsky's Endgame Manual - Mark Dvoretsky
- Basic Chess Endings - Reuben Fine
- Montana Chess News - Vol 28 Issue 2



Montana's Premier Chess Event

Bozeman
Saturday—Sunday
April 17-18

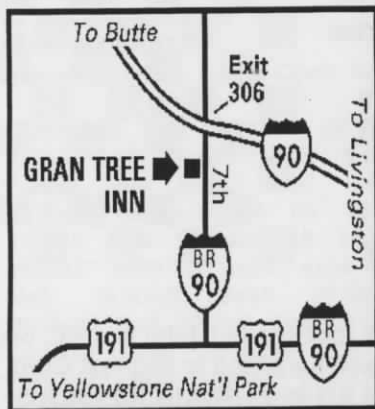
Grantree Inn

1325 North 7th Ave

Rates from \$73, mention chess
800-624-565

[www.bestwestern.com/
grantreeinn](http://www.bestwestern.com/grantreeinn)

Restaurant, Casino, Fitness
Center, Airport Shuttle



69th MONTANA OPEN

Location: Aspen Room, Grantree Inn, Bozeman

Format: Five-round Swiss System, Computer pairings

Registration: 8:30-9:30am. Player meeting at 9:45

Rounds: Sat—10:00am, 2:30pm, 7pm

Sun—9:00am, 3:00pm (ASAP after MCA annual meeting)

Time Controls: Game/120

Entry: \$25 if received by 4/16, \$30 at the door, juniors at 1/2.

Misc: Wheelchair access, No smoking, No computers

Prizes: 1st...\$75; 2nd...\$55; 3rd...\$40 2 Biggest Upsets...\$25,\$20

Trophies to top MT senior and Top MT junior

\$\$based on 25 players, more per entries

Entries: University CC, SUB Box 23, Bozeman, MT 59717

Checks payable to MCA

Information: Nick Doulas, Ph. 406-899-4664,

doulas41@bresnan.net or visit: www.montanachess.org

The Spokane Chess Club and the
Gary Younker Foundation sponsor the

Dave Collyer Memorial

in memory of former presidents
Dave Collyer and Gary Younker

Location: TBA, Gonzaga University, Spokane

Format: Five-round Swiss System, Computer pairings

Registration: 8:30-9:30am. Mandatory player meeting at 9:45

Rounds: Sat—10:00am, 2:30pm, 7pm and Sun—9:00am, 1:30pm

Time Controls: Game/120

Entry: \$26 if received by 2/20, \$31 at the door, under 19 \$5 less

Misc: No smoking, No computers, Wheelchair access

Only one prize per player (excluding biggest upset)

Prizes: 1st...\$300; 2nd...\$200; 3rd...\$100 Biggest Upset=\$50

Class Prizes: \$100 first, \$50 second: A; B; C; D/E/unrated

Entries: Spokane CC, c/o Kevin Korsmo, N. 9923 Moore,
Spokane, WA 99208. Ph. 509-466-0530 eves or wknds,
509-477-2871 days. www.spokanechessclub

Dave Collyer Memorial

12th Annual
February 21-22
Spokane, Washington

\$1250 guaranteed

Joyce's January Thaw

Date:

Saturday—Sunday
January 17-18

Site: Salvation Army Gymnasium,
1905 Henderson, 4-5 blocks off Hwy
12 (West Euclid), Helena, MT

Format: 5 round, Swiss System

Time Control: Game/90

Registration: 10:15-10:45am

Rounds: Sat—11am, 2:30pm, 7pm
Sun—9am, and 12:30pm

Prizes: 1st...\$50 2nd...\$30

Awards to top two juniors and
Biggest Upset, Top U/1600, U/1400
Prizes increased if >\$300 in entries

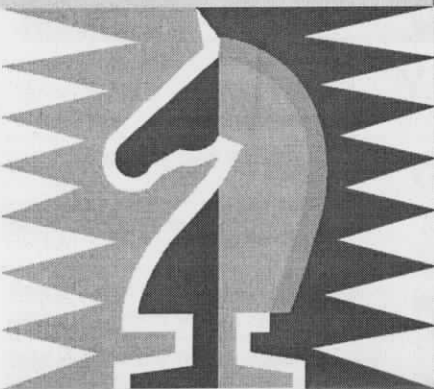
Entry: \$20 by Jan. 16, \$25 at site;
Juniors at 1/2 price

Entries and Info: Mel Drake, 5985
Scott Lane, Helena MT, 59602
Ph...406-475-3481

Director: Dan McCourt
dmcc@rmtntnet.com

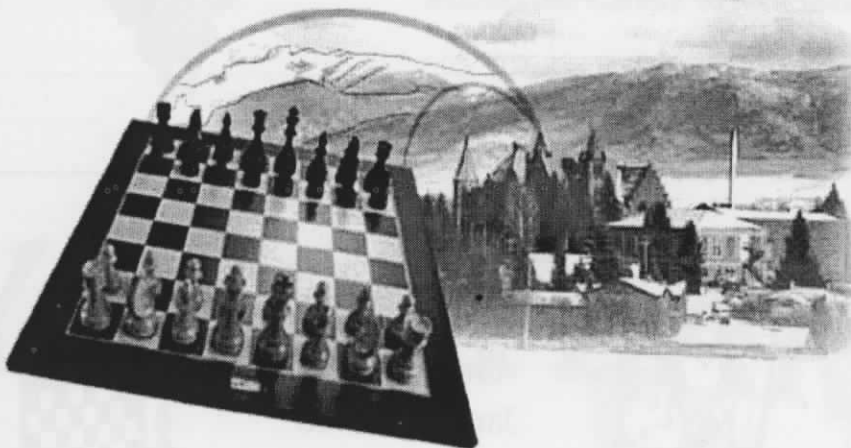
(phone/email entries must be present
at registration)

Montana Grand Prix



HELENA/BOZEMAN

UNIVERSITY CHESS CLUB



Midwinter Open

January 31

A Montana Chess Grand Prix Event

Location: Room 106 E, Strand Union Building, Montana State
University, Bozeman, MT

Format: 5 Round Swiss **Time Control:** G/45

Registration: 8:30-9am **Rounds:** 9:15, 11:00, 1:30, 3:15, 5pm

Entry Fee: \$15 received by 1/28/04, \$20 after.....Juniors at 1/2 price
Mail or PayPal, no phone entries

Entries and Info: Steve Scarff, steve@bridgeband.com, 406-586-4479
mail to: University Chess Club, SUB Box 23, Bozeman, MT 59717

Misc: NS, NC, Wheel chair access...Prizes: TBD...1/2 pt byes available before 9:15
Sponsored by University Chess Club



Groundhog Open

February 1

Location: Same as Midwinter above

Format: 5 Round Swiss **Time Control:** G/25 USCF Quick-Rated

Registration: 9:30-9:55am Sun. **Rounds:** 10am, 11am, 1pm, 2pm, 3pm

Entry Fee: \$7.50 by 1/28/04, \$10 after....Juniors at 1/2 price
Mail or PayPal, no phone entries

Entries and Info: Same as Midwinter

Misc: NS, NC, Wheel chair access Prizes: TBD..1/2 pt bye available before 10am
Sponsored by University Chess Club



69TH MONTANA OPEN

Bozeman
Grantree Inn
April 17-18
\$\$ and Trophies

Montana Chess News



Montana Chess Association

Volume 29 Issue 1

Joyce's January Thaw

Bad Roads, Cold Temps, Deep Snow



Good Chess
January 17-18



Helena's Premier Chess Event

INSIDE THIS ISSUE:

Grand Prix entering 2004	2
Results from the Yuletide, Blizzard, and Turkey Open	3
Games from the Turkey Open	4-5
Miscellaneous Games	6-7-8
JC Kuba.....Endgame Ideas	9
Upcoming Events	10-11

Editor—Dan McCourt
dmcc@rmttnet.com

608 West Central
Missoula, MT 59801