

# MONTANA CHESS NEWS

Volume 26, Issue 5 — December 2001

*In this issue:*

***Jim Skovron's hot hand leads Grand Prix***

**Four Tie for First at the Chinook**

**—Skovron, Erickson, McCourt and McBroom—**

**Greg Nowak wins the Missoula Turkey**

**Jon Johansson takes the Bozeman Blizzard**

**Check out Dan McCourt's new idea for State Champion qualification**

Since the State Closed and the Barto Memorial, the Montana Chess Scene has seen Jim Skovron get the hot chess hand. After the first two Grand Prix Tournaments, Jim leads the race with 20.59 points. In the Chinook (Great Falls), Jim tied for first place and in the Turkey (Missoula), Jim tied for second after drawing with the highest rated player in the state, Greg Nowak, and coming way with a win against state champion Jan Johansson.

Three players - Ron Erickson, Dan McCourt, and Bill McBroom - are tied for second in the Grand Prix standings. These three players tied for first at the Chinook. They also received "bonus" points for traveling to Great Falls.

At the Turkey, Greg Nowak came in clear first place with 3.5 points. You will find his games inside, showing why year after year Greg stays at the top of the Montana ratings ladder. Dennis Petrak also had a good tournament, tying for second.

In December, the Bozeman chess club sponsored the Blizzard Open, which was a one day event consisting of five rounds with the time control of game in 50 minutes. Jan Johansson placed first and tournament director Steve Scarff placed second. This was a fun tournament. For those locations that usually do not put on tournaments, a

one-day, G/50 is a good tournament.

Everyone should check out the "Coming Events" (p.13) section because it has a lot of opportunities to play chess in the coming months. Beginning in January 2002, there will be a tournament every month through the month of May.

On January 19 and 20, 2002, Helena will host its Grand Prix tournament, the **January Thaw**. On February 2, 2002, Bozeman will host its successful, G/50, one day tourney, the **Ground Hog**. On March 16 and 17, 2002, Billings will host the **St. Patty's Day** tourney, its first major tournament since the State Open of '98. Look for the **Crocus Open** in Missoula in April - Details to be announced. And last, and most noteworthy, the "**State Open**" will be upon us in May, 2002.

## Grand Prix Standings

1. Jim Skovron	20.59	7. S. Moore	9.13
2. Ron Erickson	14.11	8. R.Carpenter	9.13
3. Dan McCourt	14.11	9. G. Nowak	8.57
4. Bill McBroom	14.11	10. P.Motta	4.71
5. Dennis Petrak	12.09	11. R. Katzl	4.71
6. Jan Johansson	9.42	12. Stubblefield	4.71

## A Proposal for selecting a Our Champ.

By Dan McCourt - Western V.P.

Happy Holidays, fellow chess buffs! Hopefully, this newsletter adds another helping of seasonal cheer to your holiday plate. The winter holiday season is, for many of us in the northern climes, also a time when the board games come out for frosty afternoons and evenings. Sort of gives a "New Year" feeling to MCA chess, too, even though we are already two tournaments into the 2001-2002 grand Prix tour.

The statewide chess calendar is filling out quite nicely. Steve Scarff and the MSU Chess Club added the December Blizzard to go with their February Groundhog and Mel Drake and the Helena Chess Players will also have sponsored two events if the proposed Junior Tournament works out. There are rumblings of a possible March Grand Prix tournament in Billings. Once again Missoula welcomes spring with the Crocus Open.

It's been quite a year. Clashes of personalities and ideas have surfaced frequently. In fact, 2001 will probably be remembered as the year of pyrotechnics. We have survived. That is not to say we are better or stronger for it all, but we do have a good schedule of chess tournaments and chess is being actively promoted. Not only that, but our web site along with the new web page and the newsletter certainly gives us an all-star lineup of chess communications. I intend to enjoy this bounty while I can.

In the ebb and flow of life and planets and chess associations, good things don't always last and when the ebb comes along we should be able to say that we recognized and enjoyed a good thing while we had it. Thanks, Paul, David, and Jan.

Moving on, I want to share with you a recent vision/

Montana Chess News is published by the Montana Chess Association, an affiliate of the U. S. Chess Federation. Costs per year: \$10 regular, \$5 junior (under 18), \$15 family.

Discounted 3 year rate: \$25 regular, \$12 junior, \$35 family. First time players who are also new to the U.S.C.F. shall have their first year's MCA membership fee waived.

**David Duke, Editor**

**P.O. Box 3052**

**Billings, MT 59103**

**(406) 254-8474, (406) 254.2121**

**E-mail: dalduke@juno.com**

All submissions are welcome, including photos. Articles by E-mail or on a PC-formatted diskette are especially appreciated.

### **Publishing Schedule:**

Issue 1 - Mar. 1, Issue 2 (Special for the Open) - May 10, Issue 3 - July 15, Issue 4 - October 15, Issue 5 - Dec. 15. Deadline for most submissions is ten days before the publication date.

halucination for MCA chess. It involves the coupling of two presently dormant (sleepy, but not comatose) strategies for determining the seeding for the Montana Closed. The idea of setting 10 places at the table for the state closed has a small, but solid constituency. And so does the concept of using an Invitational Tournament for +1700 rated players to qualify someone for the 6-person closed. As "stand-alone" proposals, I think each will be voted down for the foreseeable future. But what if we were to merge the two concepts?

Here is the vision/ hallucination. We could have the 6-person be the "default format" for the state-closed. A 10 person could be used with the following prescriptions.

1. Never in consecutive years.
2. Only in conjunction with a successful invitational which would seat two players of +1700 (or +1800 or whatever) in the closed and one player from the Invitational satellite. The 10<sup>th</sup> player could be the Junior champ, Senior champ, or another seed from the Grand Prix or the Open.
3. This 10-person format would have to be voted on at the State Open business meeting.
4. The promoters would be limited to a central location like Bozeman, Helena, and Great Falls, (maybe Billings) for the Invitational. Subject to vote and not rotation.
5. The 10 person could not happen without a successful Invitational - in that case the format would be the 6 person.
6. The Invitational could only be used to seed a 10 person . . . never a 6 person.

The State Junior Tournament could be held in conjunction with the Invitational and Satellite.

I see this as a proposal to add a sort of "wild card" on any given day" element to the championship chase. An element which is interesting and dynamic only if it is not routine. Which is a good reason to use the 6 person at least every

other year and require extra effort to set up the "wild card" 10 person.

Some people, including me, have, in the past, suggested that the MCA is already an over-complicated organization. So here I am, offering a proposal that is as complicated (or more so) than any other endeavor currently in the lineup. So what's with that?? Well, I look at this proposal as a possibility to bring two diverse, but worthy, ideas together - along with their constituencies. Both ideas, both groups, get to keep their central themes, but it would take teamwork to vote this in and it would take teamwork to pull off both tournaments. I think we could do it. I would like to try for it in the 2002-2003 playing year. So get out the Roman Candles, the cherry bombs and the other pyrotechnics and lob few this way.

Best New Year wishes for all.

Dan McCourt.

# CHINOOK

## CHINOOK OPEN WITH PEPPERONI

The Great Falls Chess Club has been sponsoring their annual October tournament, the Chinook Open, for many, many years. This year's Grand Prix event produced a four-way tie for first place. Jim Skovron, Ron Erickson, Daniel McCourt, and William McBroom shared the top three prizes totaling \$175 (100 first place, 50 second place, and 25 for the extra first division prize). The second division prize was also split. The Reverend Walter Shields, Kirk Lundby, and Bill Furdell split the \$25 between them. Bill Furdell also won the \$25 best-upset prize for his win over Stubblefield.

As Thad Suits reports, it was a logjam at the top of the Chinook Open this year, owing to a parade of half-point byes and draws by the top players. Romie Carpenter came on strong, winning the three games he played, but a late registration proved to be too much to overcome in the end.

The last Newsletter contained the following error: round 5 – Furdell 1, Carpenter 0. The correct result was Carpenter 1, Furdell 0. Thank you Bill Furdell and Bill McBroom for pointing out the needed correction.

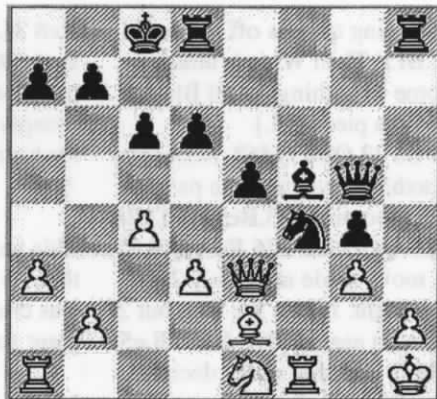
The following games and commentary are provided by Thad Suits. Thanks Thad for the games.

In the following game, Ron Erickson plays a beautiful Rook sac, opening up the position for a win.

Richard Stuckey (1179) - Ron Erickson (1714) [A21] Chinook Open 2001

1.c4 e5 2.Nc3 g6 3.e4 Bg7 4.Nf3 d6 5.d3 c6 6.Be2 f5 7.exf5 Bxf5 8.Qc2 Na6 9.Be3 Nf6 10.a3 Nc7 11.Bg5 h6 12.Bxf6 Bxf6 13.Qd2 g5 14.0-0 g4 15.Ne1 Bg5 16.Qd1 h5 17.Ne4 Ne6 18.Nxg5 Qxg5 19.Qc1 Nf4 20.Qe3 h4 21.Kh1 0-0-0 22.g3?

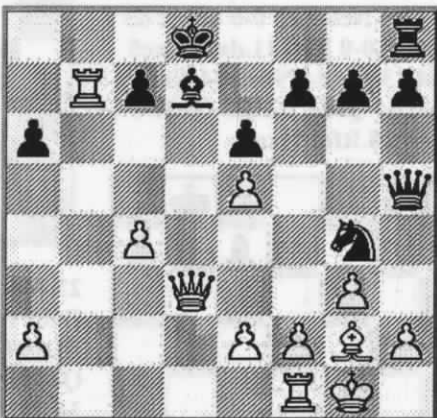
Offering to open up the position is a fatal mistake. Black's guns are poised to attack 22...hxg3 23.fxg3



Rxh2+! A sacrifice as sound as it is pretty. 24.Kxh2 Rh8+ 25.Kg1 Nh3+ 26.Kg2 Qxe3 27.Bxg4 Bxg4 28.Nc2 Qe2+ 29.Kh1 Nf4+ 30.Kg1 Qg2# 0-1

Michael Stubblefield (1585) - Shields, W (100) Chinook Open 2001

1.g3 d5 2.c4 dxc4 3.Qa4+ Bd7 4.Qxc4 Nc6 5.Nf3 e6 6.Bg2 Qf6 7.d4 0-0-0? 8.Bg5 Bb4+ 9.Nc3 Bxc3+ 10.bxc3 Na5 11.Qd3 Qf5 12.Bxd8 Kxd8 13.0-0 Qh5 14.Rab1 a6 15.c4 Nf6 16.Ne5 Nc6 17.Rxb7 Nxe5 18.dxe5 Ng4 Fritz says White to move, Mate in 3.



19.h3 [The Mate in 3 is 19.Rb8+ Ke7 20.Qa3+ c5 21.Qxc5 #] Nxe5 20.Rb8+ Ke7 21.Qa3+ Kf6 22.Rxh8 Qxe2 23.Qc3 Kg6 24.Re1 Qd3 25.Qxe5? [25.Be4+ or 25.Qxd3 Nxd3 26.Be4+ is better] 25...Qxc4 26.Qe4+ Qxe4 27.Bxe4+ f5 28.Bb1 1-0

Scott Hunt - William Furdell [B30] Chinook Open 2001

Scott Hunt, playing here in his first

rated game, shows a good feel for the opening, but he hangs a knight late in the middle game.

1.e4 c5 2.Nf3 Nc6 3.Bc4 e6 4.Nc3 d6 5.0-0 Nf6 6.d3 Be7 7.Be3 0-0 8.d4 cxd4 9.Nxd4 Nxd4 10.Bxd4 a6 11.e5 b5? 12.exf6 Bxf6 13.Ne4? [13.Bb3 would win the piece outright.] 13..Bxd4 14.Qxd4 e5 15.Qd5 Be6 16.Qxd6 Bxc4 17.Rfd1 Qxd6 18.Nxd6 Be6 19.Re1 f6 20.Re4 Rfd8 21.Rd1 Rd7 22.f4? After 22.Re3, White can still support the knight. 22...Rad8 23.fxe5 fxe5 24.Rxe5 Rxd6 25.Rxe6? Rxd1+ 26.Kf2 R1d2+ 27.Ke3 Rxc2 28.Ke4 Re2+ 29.Kf5 Rf8+ 0-1

Kirk Lundby,(1230) - Scott Hunt [B02] Chinook Open 2001 [Alekhine's opening]

For the second time in as many games, Scott outplays his opponent in the opening, only to fall victim to a middle game combination. The result is another win for Kirk, fresh from his strong showing in the Triple Header.

1.e4 Nf6 2.f3 Pretty passive, but playable. More usual is to push on the knight with 2.e5. 2...d5 3.Nc3 e5 4.d4 Nc6 Black can't afford this temporizing. Better was 4...ed4 5.Qxd4 Nc6, saving the pawn and gaining a tempo besides. 5.dxe5 Nxe5 6.exd5 Bb4 7.Bg5 Qd7 8.Bb5? Bxc3+

## MCA Board Members (2001-2002)

Jan Johansson - President  
rayanjan@mcn.net 333.4901

Sherwood Moore - V.P.  
smoore1721@aol.com 728.1695

Paul Motta - Sec./ Tres.  
webmaster@montanachess.com

Dan McCourt - W.V.P.  
dmcc@micro-mania.net 721.0254

Mel Drake - Eastern V.P.  
5950 Canyon Ferry Rd.  
Helena, MT 59602 475.3481

Let them know your ideas & concerns.

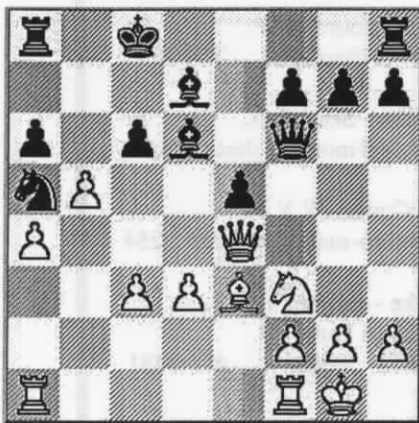


The old "zwischenzug" trick, winning a piece. **9.bxc3 Qxb5 10.Rb1 Qxd5 11.Bxf6 c6?** Up a piece, Black should grab the chance to trade down with **11...QxQ**. The text move blunders back his hard-won advantage. **12.Bxg7 Qxd1+ 13.Rxd1 Rg8 14.Bxe5 Be6 15.Ne2 Rg5 16.Bf6 Rg6 17.Bh4 Rh6 18.g3 f6 19.Nf4 Bxa2 20.0-0 Bc4 21.Rfe1+ Kf8 22.Ne6+ Bxe6 23.Rxe6 Kf7 24.Rde1 a5 25.Re7+ Kg6 26.R1e6 a4 27.Bxf6 [27.Rxf6+ Kh5 28.Re5#] 27...Kf5 28.g4+ Kf4 29.Be5+ Kg5 30.Rg7+ 1-0**

Rev. Walter Shields - Richard Stuckey,]Chinook Open 2001 [Two Knights Defense]

Although a frequent visitor to the Great Falls Chess Club for years, Reverend Walter Shields was playing in his first rated tournament ever. He played extremely fast, but fast play does not always mean losing play, as this game shows.

**1.e4 e5 2.Nc3 Nf6 3.Bc4 Nc6 4.a3 Nxe4 5.Nxe4 [5.Bxf7 is slightly better, since Black is going to get a piece back anyway. Bxf7 dislodges the K.] 5...d5 6.Bb5 dxe4 7.Qe2 Bd7 8.Qxe4 Qf6 9.Nf3 0-0-0 10.c3 Bc5 11.b4 Bd6 12.0-0 a6 13.Bxa6?! bxa6 14.d3 Kb7** In his efforts to shore up the weakened kingside, Richard gets his pieces badly tangled, beginning with this move. A better plan was to challenge the queen with **14...Qg6**, and worry about the kingside later. **15.Be3 Rb8 16.a4 Kc8 17.Qc4 Ra8 18.b5 Na5 19.Qd5 c6 20.Qe4**



20...Bc7 Black could now save the

game by forcing queens off the board with **20...Bf5!** Then White's attack would come to nothing. [And Black would be up a piece-Ed.]

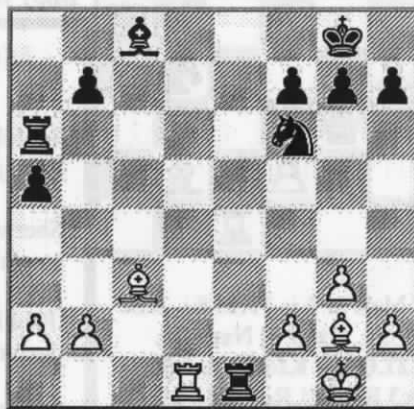
**21.Rfb1 h6 22.Qb4 Qd6?** Necessary was **22...axb5**, preventing the pawn push that is looming. **23.Bc5 Qxd3 24.b6 Rb8 25.Qxa5 Rb7 26.Rd1 Qf5 27.Qxa6** A move made after only 2 seconds thought. It gets the win, but **27.bxB** wins a lot easier. **27...Bb8 28.a5 e4 29.Bd6?!** Another quick decision by Walter. Richard should accept the knight sacrifice, but he doesn't. After **29...exN** it's hard to see how White can continue the assault. A more sound sac would have been **29.QxR!** with a long, exciting, and forced path to victory:

[**29.Qxb7+!** Kxb7 **30.a6+ Kc8 31.b7+ Kd8 32.a7 Bxa7 33.Rxa7 Kc7 34.Ne5!** Rd8 (Not **34...QxN?** **35.RxB+!**) **35.b8Q+ Kxb8 36.Rb1+ Kc8 37.Bd6]** **29...Qb5?** **30.Qa8 Rxb6 31.axb6 Qxb6 32.Rdb1 1-0**

Next is a game between two first place finishers.

Jim Skovron (1842) - Erickson, R (1714) [E11] [Nimzo-Indian]

**1.Nf3 Nf6 2.d4 e6 3.c4 Bb4+ 4.Bd2 a5 5.Nc3 c5 6.g3 Nc6 7.e3 0-0 8.Bg2 d5 9.cxd5 exd5 10.0-0 Re8 11.dxc5 Bxc5 12.Ne2 d4 13.Nexd4 Nxd4 14.Nxd4 Bxd4 15.exd4 Qxd4 16.Bc3 Qxd1 17.Raxd1 Ra6 18.Rfe1 Rxe1+**



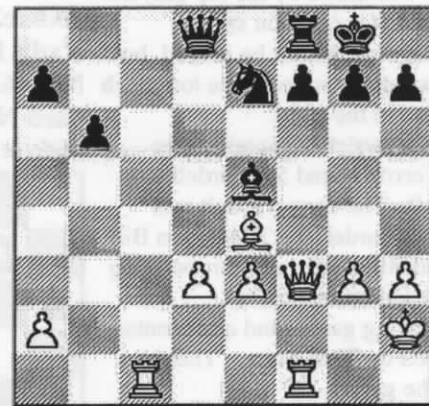
**19.Bxe1!** More accurate than the kneejerk **19.RxR**. Black has too many threats to contend with. **19...Re6 20.Bxa5 Re8 21.Bc3 Nd7 22.Bf1 Nc5 23.Bb5 Bg4? 24.Rd4 Ra8 25.Rxg4 Ne6 26.Bc4 h5 27.Re4 Ng5 28.h4??** (Groan.) **28...Nxe4 29.Bb4 Nf6 30.f3**

**Rc8 31.b3 Rd8 32.Kf2 Rd1 33.Ke2 Rg1 34.Bd6 Rg2+** Against the bishop pair it would be a long fight, so Ron accepts a draw he probably knows in his heart he did not earn.  $\frac{1}{2}-\frac{1}{2}$

This year's Chinook Open saw more than its share of silly blunders. Mike was cruising to victory until, in two giant strides, reason deserted him.

Michael Stubblefield, M (1585) - William McBroom, B (1569) [[Reti Gambit Declined]

**1.g3 d5 2.c4 c6 3.Bg2 Nf6 4.Nf3 Bf5 5.cxd5 cxd5 6.Nc3 e6 7.d3 Bc5 8.0-0 0-0 9.h3 Nc6 10.Nh4 Qc7 11.Nxf5 exf5 12.Kh2 Rad8 13.Bg5 Be7 14.Bxf6 Bxf6 15.Nxd5 Rxd5?! 16.Bxd5 f4 17.e3 Ne7 18.Be4 fvg3+ 19.fvg3 Bxb2 20.Rb1 Be5 21.Qf3 b6 22.Rbc1 Qd8**

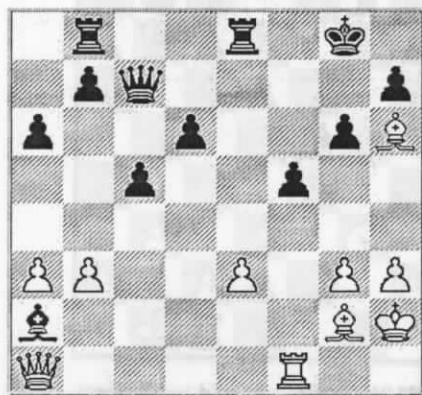


**23.Bxh7+!** Kxh7 **24.Qh5+ Kg8 25.Qxe5 Ng6 26.Qc3 Qd5 27.Qc4 Qd6 28.d4 Qe7 29.Rf3 Qd6 30.d5? Ne5 31.Qe4 Nxf3+ 32.Qxf3 Qa3 33.Rc2 Qd3 34.Rf2 f6 35.e4 Qd4 36.Re2 Re8 37.h4 Rc8 38.Kh3 Rc3 39.Qf2 Qe5 40.Kg2 Rc1 41.Qf4 Qa1 42.Kh3 Rh1+ 43.Kg4 Qd1 44.Qd2 Qf1 45.Rg2 Qb1 46.Kf4 Qa1 47.Qb2 Rf1+ 48.Rf2? Qxb2 49.Rxf1 Qe5+ 50.Ke3 Qxg3+ 51.Kd4 Qe5+ 52.Kd3 Qg3+ 53.Kc4 Qc7+ 54.Kd3 Qc5 55.Rf5 Qa3+ 56.Kd4 Qb2+ 57.Ke3 Qxa2 58.h5 Qb3+ 59.Kf4 Qh3 60.e5 Qh4+ 61.Ke3 Qh3+ 62.Ke4 Qg4+ 63.Rf4 Qg2+ 64.Rf3 fxe5 65.d6 Qg4+ 66.Kxe5 Qxf3 67.Ke6 Qxh5 68.d7 Qh3+ 0-1**

This next game, which won best upset prize for Bill, features a pretty checkmate.

William (Bill) Furdell, W (1384) - Michael Stubblefield (1585) [A36] Chinook Open 2001 [English]

1.c4 c5 2.g3 Nc6 3.Bg2 g6 4.Nc3 Bg7 5.a3 Nf6 6.e3 e5 7.Nb5 d6 8.h3 a6 9. Nc3 Bd7 10.Nge2 Rb8 11.d4 Qb6 12. dxe5 Nxe5 13.0-0? Nxc4 14.Rb1 Qc7 15.b3 Nb6 16.Bb2 0-0 17.Nf4 Rfe8 18. Kh2 Bf5 19.Ncd5? Nbx5 20.Nxd5 Nxd5 21.Bxg7 Nxe3 22.fxe3 Bxb1 23. Bh6 Ba2? Instead, 23.Be4 should hold the win. Now the roof caves in on Mike. 24.Qa1 f5 White to move, mate in 3.



25.Bd5+ Qf7 26.Qg7# 1-0

Sherwood Moore (1664) - Robert Mitchell (1599) [D02] Chinook Open 2001[Colle]

With this draw, Bob Mitchell passed the landmark of 1600 for the first time. It was his first rated game since 1992. Welcome back, Bob!

1.d4 d5 2.Nf3 Nc6 3.e3 Nf6 4.Nbd2 Bg4 5.c3 e6 6.Bd3 Be7 7.0-0 0-0 8. Qc2 Bh5 9.Ne5 Bd6 10.f4 Ne7 11. Ndf3 h6 12.h3 Qe8 13.g4 Bg6 14. Nxc6 Nxc6 15.Bxc6 fxc6 16.Ne5 Ne4 17.Kg2 Kh7 18.Bd2 Qe7 19. Rf3 Bxe5 20.dxe5 g5 21.Raf1 Rf7 22.Bc1 Raf8 23.c4 c6 24.b3 g6 25. a4 Qb4 26.cxd5 cxd5 27.Rd1 Qc3 28.Qxc3 Nxc3 29.Rd3 Ne4 1/2-1/2

This next game, the last to conclude, pitted the top two players

in the tournament.

Jim Skovron (1842) - Dan McCourt (1661) [A85]Chinook Open 2001 [Dutch]

1.d4 f5 2.c4 Nf6 3.Nc3 d6 4.g3 g6 5.Bg2 Bg7 6.e4 fxe4 7.Nxe4 0-0 8. Ne2 Nxe4 9.Bxe4 c6 10.0-0 Qc7 11. Be3 Nd7 12.Qd2 Nf6 13.Bg2 Bf5 14.Nc3 Qd7 15.Bh6 Bxh6 16.Qxh6 Bd3 17.Bh3 Bf5 18.Bxf5 Qxf5 19. Qd2 e5 20.dxe5 dxe5 21.Rae1 Rad8 22.Qe2 Rfe8 23.Rd1 Rxd1 24.Rxd1 Kf7 25.Kg2 Re7 26.Re1 e4 27.Nd1 Ng4 28.Ne3 Qf3+ 29. Qxf3+ exf3+ 30.Kxf3 Ne5+ 31.Kg2 Nxc4 32.b3 Ne5 33.Rd1 Rd7 34. Rxd7+ Nxd7 35.f4 b5 36.Kf2 a5 37.Ke2 Nc5 38.Ng4 Ke6 39.Ne5 Kd5 40.Ke3 Ne4 41.Nxc6 Nc3 42. Nxa5 Nxa2 43.g4 Nb4 44.Nb7 Nc2+ 45.Kf2

In post-game analysis, 45.Kd3 also led to a draw. 45...Nd4 46.h4 Nxb3 47.Ke3 Nd4 48.Kd3 b4 49.Na5 Nf3 50.h5 gxh5 51.gxh5 Nd4 52.Nc4 b3 53.Ne5 [Note: Either the players were out of time or this scoresheet is a misprint because from here, Black easily pushes the b pawn to a Q with 53. . .b2 - Ed.] 1/2-1/2

Nick Doulas (1280) - Scott Hunt (100) [A07]Chinook Open 2001 [Reti]

1.Nf3 d5 2.g3 Nf6 3.Bg2 Nc6 4.0-0 e5 5.d3 d4 Premature. 6.c3 Bc5 7. cxd4 Nxd4 8.Nxd4 Bxd4 9.e4 0-0 10.Nd2 b6 11.Nf3 c5 12.Qb3 Qd7 12. . . Be6 develops with a tempo. 13.Nxd4 exd4? 13...Qxd4 is better, leaves White with a backward pawn. 14.e5 Ne8 15.Bxa8 Bb7 16.Bxb7 Qxb7 17.e6 Nd6 18.exf7+ Nxf7 19. Re1 Kh8 20.Qe6 Ng5? 21.Bxg5 1-0

## The Web Corner

By Paul Motta

The MCA website continues to be a great resource for the membership and is probably still the best state chess association website in the USA. A section showing current Grand Prix standings was added, and the point standings have been kept current. The "Chess Quote of the Month" is featured on the member section home page and reveals some very interesting quotes by some colorful players from the past. The new revised bylaws were posted at the site in October, and every effort is being made to keep the USCF ratings of Montana USCF and MCA members updated.

January 2002 will bring a new change at [www.montanachess.com](http://www.montanachess.com). The membership section will now be open to anyone accessing the website. This will allow other chessplayers from around the country and the world to see how progressive our association has become during the past few years. However, to prevent abuse and a drain on resources, the email chess and message board sections will still be restricted to members only (via the username and password info.).

Games from the Chinook Open and Turkey Open will be posted at the site soon. Keep in mind that the games are playable in your browser, but you must have javascript enabled. If you have any questions or suggestion, please send an email to [webmaster@montanachess.com](mailto:webmaster@montanachess.com).

Enjoy your visit to the site!

\*\*\*\*\*  
\*  
\* Promote Chess, Be a Tournament Director \*  
\*  
\*  
\*\*\*\*\*

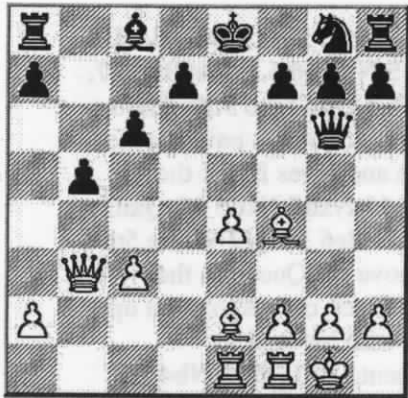




In this next game, **Jim Skovron** gets a win over the current Montana State Champ. Comments by **Jon Johansson**.

Jan Johansson (2023) - Jim Skovron (1842) [C21]Turkey

1.e4 e5 2.d4 exd4 3.Nf3 Bb4+ 4.c3 dxc3 5.Nxc3 Nc6 6.Bc4 Qe7 7.0-0 Bxc3 8.bxc3 Ne5 9.Nxe5 Qxe5 10.Qb3 Qh5 11.Bf4 c6 12.Rae1 [12. Bd6!] 12...b5 13.Be2 Qg6



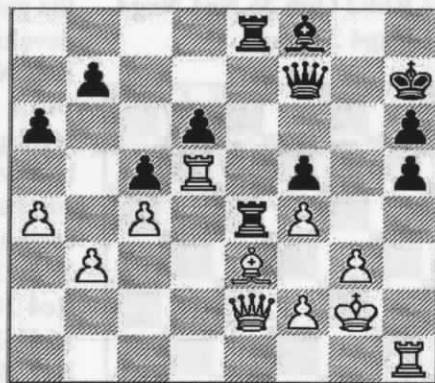
14.Bxb5?? one ? is for miscalculating this sac completely and the other ? is for sac'ing my B in a position that is excellent without the sac. [14.c4 a6 15.Qa3 Bb7 16.Bd6 h5 17.Qc5 and Black is already in serious trouble!] 14... cxb5 15.Qd5 Qc6 16.Qe5+ More promising are Qg5 or Bd6. 16...Kf8 This was the move that I had missed. 17.Qd4 Bb7 18.Bd6+ Ne7 19.f4 h5 20.Rf2 Rh6! Very effective! 21.e5 Rg6 22.Qd2 Ke8 23.Bxe7 Kxe7 24.f5 Rfg2+! crushes White's last hope. 25.Rxg2 Qxg2+ 26.Qxg2 Bxg2 27.Kxg2 Rc8 28.Re3 g6 29.fxg6 Rg8 30.Kf3 Rxg6 31.Ke4 Ke6 32.Kd4 Rg5 33.a3 d6 34.exd6+ Kxd6 35.Rf3 Rg4+ 36.Kd3 Ke6 37.Rh3 Rg5 38.c4 a6 39.cxb5 Rxb5 40.Kd4 Ra5 41.Kc4 Rg5 42.Rb3 Rg4+ 43.Kc5 Ke5 44.Rh3 h4 45.Kb6 Rg6+ 46.Ka5 Rh6 White resigns. 0-1

**Dan McCourt** plays the following good game against tournament winner **Greg Nowak**, but Dan comes up short in the end.

Comments by Jon Johansson.

Greg Nowak (2162)- Dan McCourt (1661) [A10] Turkey

1.g3 f5 2.c4 Nf6 3.Bg2 g6 4.d4 d6 5.d5 Bg7 6.Nh3 Nbd7 7.Nf4 Ne5 8.h4 Rb8 9.Nd2 Kf7 Cool move - DD 10.Nf3 Nxf3+ 11.exf3 e5 12.dxe6+ Bxe6 13.Nxe6 Re8 14.0-0 Rxe6 15.Be3 a6 16.Qb3 c5 [16... c6 or ...b6 is suggested-Ed.] 17.Rad1 Qc7 18.Rd2 Qe7 19.a4 h6 20.Rfd1 Bf8 21.f4 Qc7 22.h5 gxh5 23.Bd5 Nxd5 24.Rxd5 Kg6 25.Qd3 Qf7 26.Kg2 Rbe8 27.Rh1 Re4 28.Qe2 Kh7 29.b3? Hands over the advantage to Black

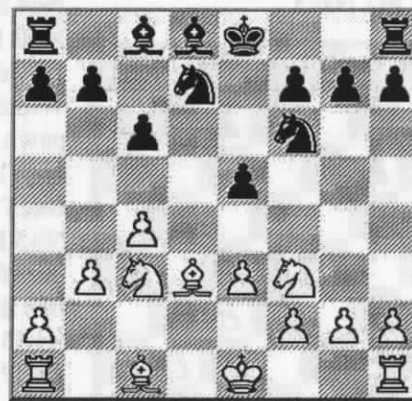


29...Rd4! 30.Qf3 Rxd5 31.cxd5 Re4 31...b5! getting counterplay on the Q side. 32.Rxh5 Qxd5 Black has the advantage 33.g4 White does not have a choice, he could only hope that Black does not find the right move. I sat nearby and I saw that Dan had to find the right move, he had no choice either. I waited with excitement for him to move. 33...Qg8? [33...fxg4 34.Rxd5 gxf3+ 35.Kxf3 Rb4 36.Rd3 Kg6 with excellent winning chances for Black] 34.Rxf5 Re6 35.g5 hxg5? 36.fxg5 Black is lost. 1-0

**Jim Skovron** and **Dennis Petrak** play to a draw. The game is published here because of the tactics pointed out by Fritz.

Jim Skovron (1842) - Dennis Petrak (1682) [A21]Turkey

1.c4 e5 2.Nc3 d6 3.e3 Nf6 4.d4 Be7 5.dxe5 dxe5 6.Qxd8+ Bxd8 7.Nf3 Nbd7 8.b3 c6 9.Bd3? [9.Ba3 or 9. Bb2 is better]



9...h6? The move here is 9...Ba5 where White loses a piece because of Black's ability to move ...e5. For example, 10.Bd2 Bxc3 11.Bxc3 e5 12.Bxf6 Nxf6 and White loses a piece. 10.Bb2 Bc7 11.0-0-0 12.Rad1 Re8 13.Bb1 Nf8 14.Rd2 Bg4 15.Rfd1?! Bh5?! [15...e4] 16.h3 [16.Ne4] 16...Bxf3 17.gxf3 Rad8 18.Rxd8 Rxd8 19.Rxd8 Bxd8 20.Ne4 Nxe4 21.fxe4 Bc7 22.f3 c5 23.Kg2 Ne6 24.Kg3 a5 25.h4 b6 26.Bc1 f6 27.Bd3 h5 28.Bf1 Kf7 29.Bh3 g6 Draw agreed. 1/2-1/2

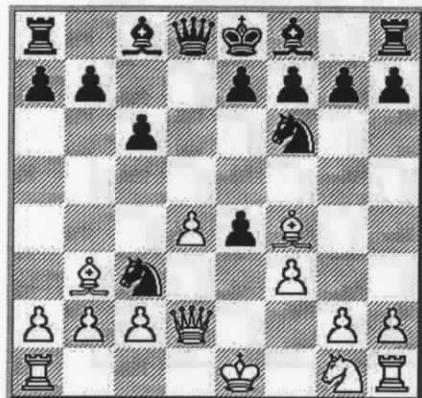
Dan McCourt- M. Stubblefield

1.e4 c5 2.f4 e6 3.e5 d5 4.exd6 Bxd6 5.g3 Bd7 6.Nf3 Bc6 7.Bg2 Ne7 8.0-0 h5 9.Nc3 Nd7 10.Qe2 Nf6 11.b3 Nf5 12.Bb2 h4 13.Nxh4 Nxh4 14.Bxc6+ bxc6 15.gxh4 Rxh4 16.Ne4 Bxf4 17.Rxf4?! Rxf4 18.Nxf6+ gxf6 19.Qg2 Rc8 20.Rf1 Rxf1+ 21.Qxf1 e5 22.Qf2 Qd6 23.c3 Ke7 24.b4 Rg8+ 25.Kf1 Qd3+ 26.Ke1 Qe4+ 27.Kd1 0-1  
End of Scoresheets.

**Greg Nowak and Paul Motta** met in the second round. Greg met the Paul's Blackmar-Diemer Gambit by challenging control for d5. Greg wins a pawn and turns the advantage into a win.

Paul Motta (1903) - Greg Nowak (2162) [B15] Turkey

1.d4 c6 2.e4 d5 3.Nc3 dxe4 4.Bc4 Nd7 5.Bf4 Nb6 6.Bb3 Nf6 7.f3 Nbd5 8.Qd2 Nxc3



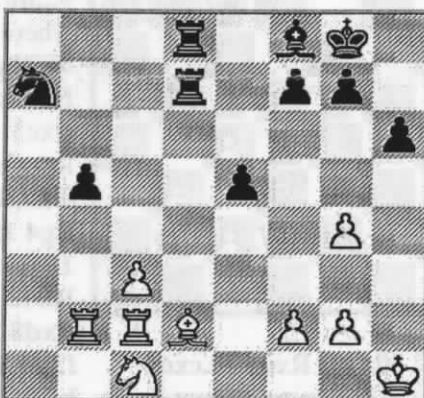
9.bxc3 In an effort to save time, White captures with the b pawn, however, Black quickly picks on the pawn weakness and soon wins the pawn, which is enough of an advantage for Black to push through for a win. **Qa5 10.Qe3 Nd5 11. Bxd5 cxd5 12.fxe4 dxe4 13.Ne2 Bd7 14.0-0 e6 15.Qxe4 Bc6 16.Qe3 Qd5 17.Rf2 Be7 18.Bg3 h5 19.Nf4 Qe4 20.Qxe4 Bxe4 21.Nd3 Rc8 22. Ne5 h4 23.Bf4 f6 24.Ng4 Rxc3 25. Re2 Bd5 26.Ne3 Kd7 27.Nxd5 exd5 28.Rb1 b6 29.Rb5 Rh5 30. Rb3 Rxb3 31.cxb3 Rh8 32.Rc2 Rc8 33.Rxc8 Kxc8 34.Kf2 Kd7 35. h3 Bd6 36.Bd2 Ke6 37.Kf3 Kf5 38. Be1 g5 39.Bd2 Bf4 40.Be1 Bc1 41. Bf2 Bd2 42.Ke2 Bf4 43.Kf3 Bc1 44.Be1 Kg6 45.Bb4 Bb2 46.Ke3 Bc1+ 47.Kf3 Kh5 48.Be7 f5 49. Bd6 g4+ 50.hxg4+ fxg4+ 51.Kf2 Kg6 52.Ke2 Kf5 53.Be7 Bg5 54. Bd6 Bf4 55.Be7 h3 56.gxh3 gxh3 57.Kf3 h2 58.Kg2 Ke4 59.Bf6 Be3 60.Kxh2 Bxd4 0-1**

**Jon Johansson and Paul Motta** played to a draw in the third round. While Black had the better of the position, there was no break through.

Jan Johansson,(2023) - Paul Motta (1903) [C44] Turkey

1.e4 Nc6 2.d3 d5 3.Nd2 Nf6 4.Ngf3 e5 5.Be2 dxe4 6.dxe4 Bc5 7.0-0 0-0 8.c3 a6 9.Qc2 Re8 10.h3 Bd7 11. Nc4 h6 12.b4 Ba7 13.a4 Qc8 14. Kh2 b5 15.axb5 axb5 16.Na3 Qb7 17.Bd3 Bb6 18.Qe2 Na7 19.Nd2

White does not take Black's b5 pawn, which only leads to the loss of White's e4 pawn. **19...c5 20.bxc5 Bxc5 21.Rb1 Rab8 22.Nc2 Qc7 23. Nb3 Bd6 24.Bd2 Rec8 25.Kh1 Rb7 26.Rfc1 Be6 27.Ne3 Bc4 28.Nf5 Bf8 29.Rc2 Rd8 30.Nc1 Bxd3 31. Nxd3 Qc4 32.Nc1 Qxe4 33.Ne3 Rbd7 34.Rbb2 Qg6 35.Ng4 Nxg4 36.Qxg4 Qxg4 37.hxg4**



37 . . Nc6 Black could have traded a R for two pieces by 37 . . Ba3 38. Ra2 Rxd2 39.Rxd2 Rxd2 40. Rxd2 Bc1, however, the game would still probably end in a draw because Black's b pawn would likely fall in short order. **38.Be3 b4 39.cxb4 Nxb4 40.Rc4 Nd3 41.Nxd3 Rxd3 42.g3 Draw**

Going into the last round, four players were tied for first. All needed a win to stay in the hunt for first. **Greg Nowak** was Black and he played **Rudi Katzl**. In this game, Black sacs a pawn to gain time. Black also notices White has moved his Queen 5 times in the first 14 moves. This enables Black to catch White's King in the middle.

Rudi Katzl (1907) - Greg Nowak (2062) [B32] Turkey

1.e4 c5 2.Nf3 Nc6 3.d4 cxd4 4. Nxd4 e5 5.Nb5 a6 6.Nd6+ Bxd6 7. Qxd6 Qf6 8.Qd1 Qg6 9.Nc3 Nf6 10.f3 d5 Black sacs a pawn, which buys time and gives Black the initiative. **11.Nxd5 Nxd5 12.Qxd5 0-0 13.Qd2 Be6 14.Qf2** White 5th time to move his Queen in the opening. Black moves to open up the game with his lead in development. **f5 15.Bd3 Nb4 16. Bd2 Nxd3+ 17.cxd3 fxe4** Fritz says Black should first move Rad8, to put pressure down the d file against the backward pawn. **18.dxe4 Bc4** Black succeeds in preventing White from castling. **19.Rc1 Bd3 20.Qg3 Qd6 21.Bc3 Rac8 22.Rd1 Rfd8 23.f4?! Rc4 24.Rxd3 Qxd3 25.Qxd3 Rxd3 26.Ke2 Rd7 27.Ke3 exf4+ 28.Kxf4 Kf7 29.Re1 Ke6 30.Ke3 Rc8 31. Re2 Rcd8 32.Rf2 Rf7 33.Re2 g6 34.a3 Rf1 35.Rc2 Rh1 36.h3 Rd7 37.Rf2 Rf7 38.Rd2 Re1+ 39.Re2 Rxe2+ 40.Kxe2 Rf4 41.Ke3 Rf1 42.Ke2 Rg1 43.Kf2 Rc1 44.Ke2 Rc2+ 45.Kf3 b5 46.g3 a5 47.Kf4 h6 48.h4 a4 49.g4 b4! 50.Bxb4 Rxb2 51.Bc5 g5+ 52.hxg5 hxg5+ 53.Kf3** White cannot take the pawn due to the pin caused by Rb5. **53... Rb3+ 54.Kf2 Ke5 55.Be7 Kxe4 56. Bxg5 Rxa3 57.Bf6? Rf3+** White resigns. 0-1

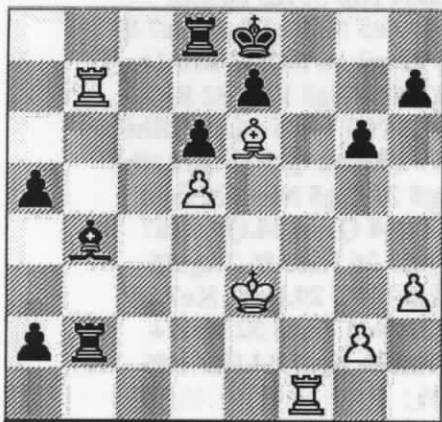
\*\*\*\*\*  
 Junior Tournament - March 23, 2002  
 Helena, Montana - see page 13 for details  
 \*\*\*\*\*



The following two games involve **Ron Erickson and Rudi Katzl**. The first game comes from the Turkey Open and the second game comes from the UCCC First Fall Open. These two combatants split their games.

Ron Erickson (1714) - Rudi Katzl (1907) [B38] Turkey

1.Nf3 c5 2.e4 Nc6 3.d4 cxd4 4. Nxd4 g6 5.c4 The Maroczy Bind 5...Bg7 6.Be3 d6 7.Nc3 Nf6 8.h3 0-0 9.Qd2 Nxd4 10.Bxd4 Be6 11. Nd5?! Bxd5?! [11...Nxe4] 12.Bxf6 Bxf6 13.cxd5 Qb6 14.Be2 Qxb2 15.Qxb2 Bxb2 16.Rb1 Bc3+ 17. Kf1 Rab8 18.Bg4 b5 19.Bd7 b4 20. Ke2 Rbd8 21.Bc6 f5 22.Kd3 fxe4+ 23.Kxe4 Rxf2 24.a3 bxa3 25.Rb7 a5 26.Ke3 26...Rf7 Fritz says Black should play either Rb2 or Rxe2. 27.Kd3 Bb4 28.Bd7 Kf8 29. Be6 Rf2 30.Ke3 Bc5+ 31.Kd3 a2 32.Bg4 Bb4 33.Ke3 Rb2 34.Rf1+ Ke8 35.Be6



Bc5+! 36.Kd3 Rxb7 White Resigns 0-1

Rudi Katzl (1907) - Ron Erickson (1714) [A45] UCCC 1st Fall Open

1.d4 Nf6 2.Nc3 e6 3.Bg5 Bb4 4.e4 h6 5.Bxf6 gxf6 6.Bd3 b6 7.Nge2 Bb7 8.a3 Bxc3+ 9.Nxc3 f5 10.Qe2 Nc6 11.exf5 Qg5 12.Rg1?! [12. d5 ] 12...Nxd4 13.Qe5



Nf3+! 14.gxf3 Qxg1+ 15.Bf1 0-0-0 16.Nb5 d6 17.Qc3 c5 18.Nxd6+! Rxd6 19.Qxh8+ Rd8 20.Qxh6 exf5 The score sheet was hard to read here. I think this was the move. 21. Qh4 Qg7 22.c3 Qe5+ 23.Be2 Bxf3 24.Qxd8+ Kxd8 25.0-0-0+ Kc7 26. Bxf3 Qf4+ White Resigns 0-1

\*\*\*\*\*  
**UCCC FIRST FALL  
 OPEN**  
 \*\*\*\*\*

Here are two more games, taken from the UCCC First Fall Open, in Missoula, Montana.

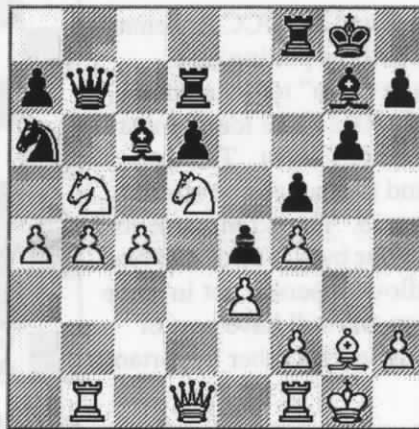
Roger White - Scott Young [C50] UCCC 1st Fall Open

1.e4 e5 2.Nf3 Nc6 3.Bc4 Bc5 4.Nc3 d6 5.h3 Be6 6.d3 Nge7 7.a3 Bxc4 8.dxc4 f5 9.Bg5 0-0 10.Nd5 fxe4 11.Bxe7 Nxe7 12.Nxe7+ Qxe7 13. Qd5+ Qf7 14.Qxe4 Qf4 15.Qd5+ Qf7 16.0-0-0 Qxd5 17.cxd5 Bxf2 Black wins a pawn. Black's e pawn is now a passed pawn, which at the end of the game threatens to become a Q, and forces White to resign. 18. Rhf1 Be3+ 19.Kb1 Rf6 20.Rde1 Bf4 21.Re4 c6 22.c4 cxd5 23.cxd5 Rc8 24.Rd1 Rf7 25.Nd2 Bxd2 This is a good trade. The player with more pieces should, in general, trade down so in end game the additional piece will become all the more important. 26.Rxd2 b5 27. Ka2 Rfc7 28.Kb3 a5 29.Re3 Rc4

30.Rc3 a4+ 31.Kc2 Rxc3+ 32.bxc3 Kf7 33.Re2 Rc5 34.Rd2 e4 35.Rd4 Rc4 36.Rd1 g5 37.Rf1+ Kg6 38. Rf8 Rc5 39.Re8 Kf5 40.g4+ Kf4 41.Rf8+ Kg3 42.Rf5 h6 43.Rf6 Rxd5 44.Rxh6 e3 45.Re6 Re5! The right move at the right time, which brings home the point. 46.Rxd6 e2 47.Rd3+ Kf2 White resigns. 0-1

Romie Carpenter, R (1820) - Dan McCourt (1616) [A88] First Fall Open

1. Nf3 f5 2.g3 Nf6 3.Bg2 d6 4.d4 g6 5.c4 c6 6.0-0 Bg7 7.Nc3 0-0 8.Rb1 Qe8 9.d5 e5 10.dxc6 e4 11.cxb7 Bxb7 12.Nd4 Na6 13.Bf4 Rd8 14. b4 Nh5 15.Nd5 Qf7 16.Nb5 Nxf4 17.gxf4 Bc6 18.e3 Qb7 19.a4 Rd7



20.Nxd6 Rxd6 21.b5 Bxd5 22.bxa6 Qxa6 23.cxd5 Qc4 24.Qc1 Qxa4 25.Qc7 Qd7 26.Qxd7 Rxd7 27. Rfd1 Rfd8 28.Bf1 Kf8 29.Bc4 a5 30.Rb6 a4 31.Ra6 a3 32.Rxa3 Ke7 33.Ra6 Bc3 34.Re6+ Kf8 35.Rb1 Rc7 36.Rc6 Rdd7 37.Rb8+ Kg7 38.Rg8+ Kh6 39.Rc8 Rxc8 40. Rxc8 Black wins, must be on time, looks pretty even. 0-1

\*\*\*\*\*  
**Ground Hog  
 February 2, 2002  
 Bozeman**  
 \*\*\*\*\*

★★★★★★★★★★★★★★★★★★★★  
 ★ **BLIZZARD OPEN** ★  
 ★★★★★★★★★★★★★★★★★★★★★★

By David Duke

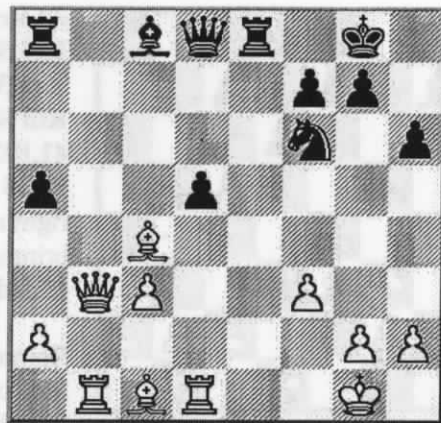
On Saturday December 8, 2001 there was no blizzard on the MSU Bozeman campus. To the contrary, weather was nice, which allowed 17 chess players to come to Bozeman and play in the one day event. The format was G/50 which allowed tournament director Steve Scarff to fit in 5 games in one day. Jan Johansson placed first with 4.5 points, followed by Steve Scarff with 4 points. Devin Gray place first in the U1600 and new player Chuck Tilly took first in the unrated category.

Steve Scarff and the UCC Bozeman chess club will be putting on a "Groundhog Open" tournament on February 2, 2002. The tournament will be a one day event. The time controls and format will be similar to the Blizzard. These tournaments are fun. In our busy world, this type of event allows a person get in some chess action and still have part of the weekend left for other important demands.

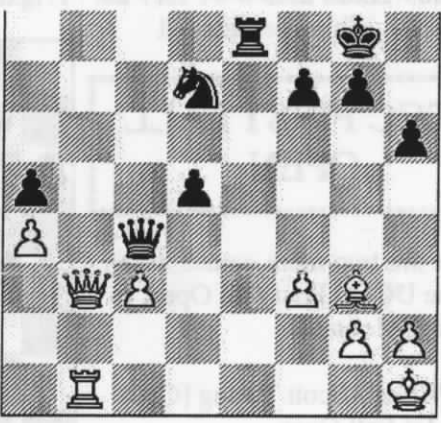
The following game between **Jim Loy** and **Steve Rasmussen** is the biggest upset from the Blizzard. Steve's last move is beauty! Take a look.

Jim Loy (1709) - Steve Rasmussen (1174) [B32] Blizzard Open

1.e4 c5 2.d4 cxd4 3.Nf3 Nc6 4.c3 e5 5.Bc4 h6 6.cxd4 Bb4+ 7.Nc3 exd4 8.Nxd4 Nf6 9.Nxc6 Bxc3+ 10.bxc3 bxc6 11.0-0 0-0 12.f3 Fritz recommends 12.e5. 12...Re8 13.Rb1 a5 14.Qb3 d5 15.exd5 cxd5 16.Rd1?



16...Be6? Black wins a piece with 16...dxc4 17.Rxd8 cxb3 18.Rxe8 Nxe8. 17.Bb5 Qb6+ 18.Kh1 Reb8 19.Qc2 Qc5 20.a4 Bd7 21.Bxd7 Nxd7 22.Bf4 Rxb1 23.Rxb1 Re8 24.Bg3 Qc4 25.Qb3



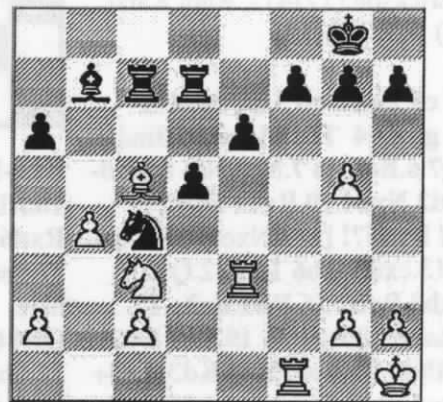
Re1+!! Beautiful move. White must give up his Queen to save his game for awhile. White resigns. 0-1

Tournament Director Steve Scarff wins this last round game to secure a clear second place.

Steve Scarff (1644) - Dan McCourt (1749) [C11]Blizzard Open,

1.d4 d5 2.e4 e6 3.Nc3 Nf6 4.e5 Nfd7 5.Nf3 c5 6.Be3 Nc6 7.Bb5 a6 8.Bxc6 bxc6 9.0-0 Qc7 10.Ng5 cxd4 11.Bxd4 Be7 12.f4 Bxg5 13.fxg5 c5 14.Qf3 0-0 15.Bf2 Qxe5 16.Bg3 Qd4+ 17.Kh1 Ne5 At this point, Black is up a pawn in a solid position. Instead of this attacking move (... Ne5), I think Black

should complete his development - Bb7, and prepare to push his center pawns. 18.Qh5 Qg4 19.Qxg4 Nxg4 20.Bd6 Rd8 21.Bxc5 Ne5 22.Bd4 Nc6 23.Be5 Rb8 24.b3 Rd7 25.Rf4 Rbb7 26.Re1 Ne7 27.Ref1 Ng6 28.R4f3 Rbc7 29.b4 Bb7 30.Rd3 Ne5 31.Re3 Nc4?



32.Rxe6! White finds the move. Rc8 33.Re2 d4 34.Rd1 Nb2 1-0

Jan Johansson (2041) - Michael Long(1765) [B07] Blizzard Open,

1.e4 d6 2.d4 Nf6 3.Nc3 c6 4.f3 Nbd7 5.Be3 e5 6.d5 c5 7.a4 Be7 8.Nge2 b6 9.Ng3 a6 10.Nf5 Bf8 11.Be2 g6 12.Ng3 Ng8 13.Qd2 Bg7 14.h4 h5 15.Nf1 Ndf6 16.Bg5 Bh6 17.g3 Bd7 18.Nh2 Qc8 19.Rf1 Rb8 20.f4 Bxg5 21.fxg5 Ng4 22.Nxg4 Bxg4 23.Bxg4 Qxg4 24.Qf2 Rh7 25.Qf3 Qxf3 26.Rxf3 f6 27.gxf6 Rf7 28.Ke2 Nxf6 29.Raf1 Ke7 30.b3 Rbf8 31.Nd1 Nxe4 32.Rxf7+ Rxf7 33.Rxf7+ Kxf7 34.Kf3 Nf6 35.c4 1/2-1/2

Find the Cruncher. Black to move.

Answer on the last page.

# "Measley" wins Big

By Greg Nowak

The 8<sup>th</sup> Greater Northwest team championship was a big success. On Saturday, November 17, 2001, six teams slugged it out at the popular Double Front Chicken banquet room. And after 7 previous tries with powerful names, my team "The Measley Pawns" finally prevailed! The race was on from the start. The Measley Pawns had to keep winning to keep pace with Mike Jensen's "Northern Knights. Going into the last team match with the Northern Knights, both teams won 4 of 4 match contests with "MP" 16 of 16 in game points to 13 of 16 for "NK" So all we really needed was a match point for the title. A perfect 5-0 in match points and 18.5 of 20 games points. Mike Jensen fought me to the end in a draw that featured a PK4 type Najdorf Sicilian with me as Black.

The Ramblin Rooks were a family team that played for the fun of it. Give them credit for trying. Even though they lost all of their games, their participation helped make this event a true success.

The "Best Board" players were:

- Board 1 Greg Nowak 4.5-.5  
Measley Pawns
- Board 2 Hans Anderson 4.5-.5  
Northern Lights
- Board 3 Eric Gilbertsen 5.0-0  
Measley Pawns
- Board 4 Miles O Kinney 5.0-0  
Measley Pawns

13 year old Karl Busch got to play in his first "out of mid school" event. He plays above average for his age. He played 2 games and lost both. Hope he'll stay with it and be a new rising star. The event was unrated G30.

## Nowak Conquers Flathead

by Greg Nowak

On a lovely autumn day (October 13), 14 chess artisans convened to vie for the coveted title of the "6<sup>th</sup> Annual Flathead Championship." The site was the quaint, historic and popular Ole Mill Place in downtown Polson. The players engulfed homemade ice cream and

8th GREATER NORTHWESTERN TEAM CHAMPIONSHIP								
#	Team	1	2	3	4	5	6	Pts
1	<b>9 Inch Knights</b>							
	Dan McCourt	X	0	0	0	1	1	2
	Mike Stubblefield	X	0	1	0	0	1	2
	Jim Stubblefield	X	0	0	0	0	1	1
	Scott Young	X	0	1	1	1	1	4
2	<b>The Measley Pawns</b>							
	Greg Nowak	1	X	1	.5	1	1	4.5
	Paul Mitchell	1	X	1	0	1	1	4
	Eric Gilbertsen	1	X	1	1	1	1	5
	Miles O Kinney	1	X	1	1	1	1	5
3	<b>Spirited Bishops</b>							
	Loren Meierding	1	0	X	.5	1	1	3.5
	Rich Hall	0	0	X	0	0	1	1
	Ken Schultz	1	0	X	0	0	1	2
	Rick Rabner	0	0	X	0	1	1	2
4	<b>Northern Knights</b>							
	Mike Jensen	1	.5	.5	X	1	1	4
	Hans Anderson	1	1	1	X	.5	1	4.5
	Don Robinson	1	0	1	X	0	1	3
	Pat Todd	0	0	1	X	1	1	3
5	<b>Knights, Round Table</b>							
	Travis Taylor	0	0	0	0	X	1	1
	Dale Gross	1	0	1	.5	X	1	3.5
	Bob Hayes	1	0	1	1	X	1	4
	Sara Hayes	0	0	0	0	X	1	1
6	<b>Ramblin Rooks</b>							
	Destry Randles	0	0	0	0	0	X	0
	Dennis Randles	0	0	0	0	0	X	0
	Deacon Randles	0	0	0	0	0	X	0
	K.Busch, Mr. Taylor, Kinney	0	0	0	0	0	X	0

8th GREATER NORTHWESTERN TEAM CHAMPIONSHIP										
#	Team	1	2	3	4	5	6	Game Pts	Match Pts	Final Place
1	<b>9 Inch Knights</b>	X	0	.5	0	.5	1	9	2	4th
2	<b>The Measley Pawns</b>	1	X	1	1	1	1	18.5	5	1st
3	<b>Spirited Bishops</b>	.5	0	X	0	.5	1	8.5	2	5th
4	<b>Northern Knights</b>	1	0	1	X	1	1	14.5	4	2nd
5	<b>Knights, Round Table</b>	.5	0	.5	0	X	1	9.5	2	3rd
6	<b>Ramblin Rooks</b>	0	0	0	0	0	X	0	0	6th

sandwiches while they valiantly fought with skillful pluck.

When the last check was made, The Octopus was first with 4.5 out of 5. Dan McCourt was clear second with 4, and Pete Skarstedt was third with 3.5. The competition was stronger than last year, higher ratings and no juniors or new players to chess. It was Game 30 unrated chess fun. Ten players were USCF rated. Six players were members of MCA, which finished, in top 10. Six

players were from Missoula, two from Kalispel, and one each from Whitefish, Plains, Stepesville, Polson, Columbia Falls, and Eureka. Seven were Clandestine Chess Club members. Bob Leader gave me the toughest game, while Rick Hall got the early last round draw. The event was sponsored by local Missoula and Polson businesses.



**2001 Chinook Open with Pepperoni**

#	Name	Rtng	Rd 1	Rd 2	Rd 3	Rd 4	Rd 5	Tot
1	James Skovron	1842	W9	W6	D2	D4	D3	3.5
2	Ron Erickson	1714	W14	W8	D1	D5	H	3.5
3	Dan McCourt	1661	H	H	W9	W10	D1	3.5
4	William McBroom	1569	H	H	W8	D1	W9	3.5
5	Sherwood Moore	1664	H	H	W6	D2	D13	3.0
6	Romie Carpenter	1815	U	U	W14	W12	W7	3.0
7	William J. Furdell	1334	W15	L1	L5	W8	L6	2.0
8	M. Subblefield	1585	W10	L2	L4	L6	W14	2.0
9	Kirk Lundby	1230	L1	W15	L3	W11	L4	2.0
10	Rev. W. Shields	Unr	L8	W14	W15	L3	L12	2.0
11	Nick Doulas	1280	U	U	H	L9	W15	1.5
12	Richard Cohen	1500	U	U	U	L7	W10	1.0
13	Robert Mitchell	1599	U	U	U	U	D5	.5
14	Richard Stuckey	1179	L2	L10	L7	D15	L8	.5
15	Scott Hunt	Unr.	L6	L9	L10	D14	L11	.5

**UCCC - Missoula Turkey Open - 2001**

#	Name	Rtng	Rd 1	Rd 2	Rd 3	Rd 4	Tot
1	Greg Nowak	2162	W8	W4	D2	W6	3.5
2	Jim Skovron	1842	W16	W5	D1	D3	3.0
3	Dennis Petrak	1682	H	W17	W7	D2	3.0
4	Paul Motta	1903	W11	L1	W10	D5	2.5
5	Jan Johansson	2023	W10	L2	W15	D4	2.5
6	Rudolf Katzl	1907	W13	W14	H	L1	2.5
7	Mike Stubblefield	1585	H	W8	L3	W9	2.5
8	Dan McCourt	1661	L1	L7	W12	D10	1.5
9	Nick Cohea	1047	L14	W13	D4	L7	1.5
10	William McBroom	1569	L5	W16	L4	D8	1.5
11	Scott Young	1234	L4	D12	D9	D13	1.5
12	Michael Shuyler	1154	L15	D4	L8	W16	1.5
13	William Furdell	1316	L6	L9	D16	D11	1.0
14	Ron Erickson	1714	W9	L6	U	U	1.0
15	Sherwood Moore	1664	W12	U	L5	U	1.0
16	Mel Drake	1178	L2	L10	D13	L12	.5
17	Robert McKean	1679	U	L3	U	U	.0

**UCC (Bozeman) 2001 Blizzard Open (G/50)**

#	Name	Rtng	Rd 1	Rd 2	Rd 3	Rd 4	Rd 5	Tot
1	Jan Johansson	2041	W8	W2	W5	W3	D4	4.5
2	Steven Scarff	1644	W11	L1	W15	W10	W5	4.0
3	David Duke	1893	W10	W6	W4	L1	U	3.5
4	Michael Long	1765	W15	W9	L3	W7	D1	3.5
5	Daniel McCourt	1749	W16	W7	L1	W9	L2	3.0
6	James Loy	1709	W12	L3	L8	W11	W13	3.0
7	Devin Gray	1475	W17	L5	W14	L4	W8	3.0
8	Steve Rasmussen	1174	L1	W14	W6	W15	L7	3.0
9	Melvin Drake	1183	W13	L4	W16	L5	W12	3.0
10	Mike Shuyler	1154	L3	W11	W12	L2	W15	3.0
11	Charles Tilly	UNR	L2	L10	W17	L6	W16	2.0
12	Phillip Clark	UNR	L6	W13	L10	W14	L9	2.0
13	Conrad Donovan	UNR	L9	L12	B—	W16	L6	2.0
14	Robert Petersen	472	B—	L8	L7	L12	D15	2.0
15	Ethan Tilly	UNR	L7	L17	L11	B	D14	1.5
16	Jim Cadwaller	707	L4	B	L2	L8	L10	1.0
17	Brett Schandelson	UNR	L5	W15	L9	L13	L4	1.0

**6th Annual Flathead Chess Championship**

#	Name	Rtng	Rd 1	Rd 2	Rd 3	Rd 4	Rd 5	Tot
1	Greg Nowak	2162	W3	W4	W2	W8	D7	4.5
2	Dan McCourt	1698	W14	W5	L1	W9	W4	4.0
3	Pete Skarstedt	1280	L1	D8	W14	W6	W9	3.5
4	Bob Leader	1495	W6	L1	W10	W7	L2	3.0
5	Eric Gilgertsen	1482	W11	L2	L6	W12	W8	3.0
6	Ken Schultz	1262	L4	W12	W5	L3	W10	3.0
7	Rich Hall	1560	W10	L9	W11	L4	D1	2.5
8	Don Robinson	1300	W12	D3	W9	L1	L5	2.5
9	Jim Chester	1479	W13	W7	L8	L2	L3	2.0
10	Tom Dyer	1091	L7	W13	L4	W11	L6	2.0
11	Mark Rupp	UNR	L5	W14	L7	L10	W13	2.0
12	Ben Anderson	UNR	L8	L6	W13	L5	W14	2.0
13	Josh Spencer	UNR	L9	L10	L12	W14	L11	1.0
14	Bob Hayes	UNR	L2	L11	L3	L13	L12	0

## Upcoming Events

### January 19-20, 2002 – Helena’s January Thaw.

The Capital’s premiere Grand Prix event!

**Format:** 5 Rounds, SS **Time Controls:** Game/ 90, **Site:** Lewis and Clark Library, 120 South Last Chance Gulch. **Prizes:** 1<sup>st</sup> -\$100, 2<sup>nd</sup> -\$60, 3<sup>rd</sup> -\$30; biggest upset - \$25; best Junior (U19) - \$25. **Entry fee:** \$20 by Jan 18, \$25 at door. **Rounds:** Sat: 11 am, 2:30 pm, 7 pm, Sun: 9 am, 12:30 pm. **Registration:** 10:00 - 10:45 am. **Entries to:** Mel Drake, 5950 Canyon Ferry road, Helena, MT 59602 Phone: 475-3481. **Other:** Free coffee and doughnuts, limited overnight accommodations based on 1<sup>st</sup> notice.

### February 2, 2002 – Groundhog Open – Bozeman, MT.

**Format:** 5 Rounds, SS **Time Controls:** Game/ 50, **Site:** Strand Union Bldg., Room 106E at MSU-Bozeman. **Prizes:** Trophies 1st, 2<sup>nd</sup>, U1600, unrated, UCC reserves the right to substitute cash prizes. **Entry fee:** \$10 advance via PayPal, <https://paypal.com/refer/pal=sscarff%40MailAndNews.com>. or mail \$12 check to University Chess Club, SUB Box 23, Bozeman, MT 59717; \$15 after 1.30.02, no exceptions. **Rounds:** 9am, 10:45am, 1:30pm, 3:15pm, 5 pm. **Registration:** 8:30-8:50 am. **Contact:** Steve Scarff, [sscarff@MailAndNews.com](mailto:sscarff@MailAndNews.com), or Devin Gray, [gray@montana.edu](mailto:gray@montana.edu). **Sponsors:** University Chess Club and Office of Student Activities, MSU-Bozeman.

### March 16, 17, 2002 – St. Patty’s Day Open – Billings, MT.

Billings’ Grand Prix Event.

**Format:** 5 Rounds, SS **Time Controls:** Game/ 90, **Site:** TBA. Probably at the Billings YMCA **Prizes:** 1<sup>st</sup> -\$100, 2<sup>nd</sup> -\$60, 3<sup>rd</sup> -\$30; biggest upset - \$25; best Junior (U19) - \$25. (Note: Prizes subject to number of entries to cover the costs and prizes.) **Entry fee:** \$20 by March 15, \$25 at door. **Rounds:** Sat: 11 am, 2:30 pm, 7 pm, Sun: 9 am, 12:30 pm. **Registration:** 10:00 - 10:45 am. **Entries to:** David Duke, P.O. Box 3052, Billings, MT 59103. 254.2121 (w), 254.8474(h). **Other:** Free coffee and doughnuts, limited overnight accommodations based on 1<sup>st</sup> notice.

### March 23, 2002- Montana Junior Chess Tournament

The following is the best information at time of print. Contact promoters for details.

**Format:** 5 Rounds, SS or RR, depending on number of entries. **Time Controls:** Game/ 30, **Site:** Lewis and Clark Library **Prizes:** Trophies for the following divisions: grade 9 through age 18 (Note: There is a proposal to increase this to age 19), grades 6 - 8, and grades 1-5. Winner of top division will be the “State Junior Champ.” Younger players would be permitted to “move up” to high level competition. **Entry fee:** Proposed: \$5 for MCA members, \$10 for non-members (Hint:

buy a junior membership for \$5 and you get this fantastic newsletter for the year) **Rounds:** First round 11:30 am. **Registration:** 10:30 - 11:15am. **Entries to:** Mel Drake, 5950 Canyon Ferry Road, Helena, MT 59602 Phone: 475-3481.

UCCC (Missoula) 2001 First Fall Open						
#	Name	Rtg	Rd 1	Rd 2	Rd 3	Tot
1	Ron Erickson	1701	D3	X7	W2	2.5
2	Rudolf Katzl	1903	W6	W4	L1	2.0
3	William McBroom	1539	D1	D5	D4	1.5
4	Scott Young	1234	W7	L2	D3	1.5
5	Daniel McCourt	1616	U	D3	W8	1.5
6	Sherwood Moore	1656	L2	U	U	0
7	Roger White	1678	L4	F1	U	0
8	Romie Carpenter	1815	U	U	L5	0

**April 2002 – Crocus Open –Missoula,**  
Details TBA.

**May 2002 - Montana State Open**  
Details TBA

Montana Chess Association

David Duke  
P.O. Box 3052  
Billings, MT. 59103



9/02

Steve Scarff  
214 S. Church Ave.  
Bozeman, MT 59715



Volume 26, Issue 5 December 2001

39715+4813 04



# Upcoming Tournaments!

## January Thaw - Helena

January 19-20, 2002

## Ground Hog - Bozeman February 2, 2002

## St. Patty's Day - Billings March 16-17, 2002

## Junior Championship - Helena March 23, 2002

## Crocus - Missoula - April, 2002

## MT. State Open - May, 2002



\*\*\*\*\*  
\* Answer to the Cruncher: (Page.10) Black wins a piece by 1...d5  
\* 2.exd5 exd5 3.Bb3 Nxb3 4.axb3 d4 (fork) Shuyler - Duke  
\* \*\*\*\*\*