

MONTANA CHESS NEWS

AUG. -SEPT. -OCT., 1990 VOLUME XV-ISSUE 4

MAYER SWEEPS MIDSUMMER OPEN & TOPS BOZEMAN II ON T-B OVER MOTTA

Livingston's Zygmund Mayer swept the fourteen player field in the Midsummer Open, compiling a 5-0 score. The Bozeman II event proved a tougher challenge as Zygmund lost his second round game to Helena's Phil Heikkinen. He fought back for a 3-1 score, good for a share of 1st place with Paul Motta, who also lost in Round 2, falling to Wyoming's State Champion Ron Matous. Phil and Ron drew each other before losing to Motta and Mayer respectively, and had to settle for a tie for third place.

NICK PAZDERIC TOPS RIMROCK OPEN IN FAREWELL OUTING

Nick Pazderic scored an impressive 3.5-0.5 to win the Rimrock Open ahead of Phil Heikkinen and Zygmund Mayer. He drew Mayer in Round three and scored the full point in the fourth round while Mayer and Heikkinen drew. Nick has been improving a good deal lately and Montana will miss his participation as he has moved to Taiwan for a year or more. Steve Scarff deserves mention for his performance - he defeated Bill Lynch in Round 1, held Mayer to a draw in Round 2, and drew Chad Robinson in Round 3 before suffering a very tough loss against Les Brennan in the final game - a game that went 93 moves!

MONTANA OVER WYOMING IN INTERSTATE (MINI?) MATCH

The inaugural Wyoming vs Montana interstate match was somewhat disappointing in that only four boards were contested. However the eight participants made the most of their opportunity and turned in some exciting games. When the dust settled Wyoming's Harold Moye and Ron Matous had bested Paul Motta and Phil Heikkinen 4.5-3.5 but Kip Limesand and Hardy Grover did well on the lower boards, scoring 6-2 over Murray Strong and Harold Moneyhun (yes they are Wyoming players) to give Montana the win by 9.5-6.5.

JENSEN OUTPACES FIELD TO WIN CHINOOK OPEN

Mike Jensen scored 4.5-0.5 to take clear first in Great Falls. He finished a full point ahead of 5 players tied for 2nd-6th. The log jam included Ron Matous (who drew Mike), Zygmund Mayer, Romie Carpenter, Arman Goplen and Thad Suits. Goplen's 3.5-1.5 was good for under 1800 honors, edging out Kip Limesand and Bob Melquist (rated 1033!) who tied at 3-2. Thad Suits directed, and lost only to Jensen after a half point bye in round 1.

BILL LYNCH WINS '89-'90 POSTAL, "RETIRES" WITH TITLE

Bill Lynch scored six of seven to win clear first in the Montana Postal Championship of 1989-90. His 6-1 total was a half point ahead of Paul Motta's 5.5-1.5, who finished in second. Sherwood Moore had a fine tournament, losing only to Lynch, to finish at 5-2 in third place. Bill may rest on these laurels a while as he has accepted a Regional Vice Chairman position in his business related Engineering Society - a volunteer job with considerable time demands. He hopes to make a few tournaments, but it'll be hard to do.

The 1990 Montana State Closed Championship

by Paul Motta

This year's Closed State Championship consisted of the 1989 State Champ Mike Jensen, the 1990 Grand Prix Champ Paul Motta, along with Montana Open 1st and 2nd place finishers Kip Stubberud, Phil Heikkinen, Bill Lynch, and Ron Erickson. With an average rating strength of over 2000, it proved to be a strong event. The tourney was held concurrent with the Midsummer Open on July 14-15 in Missoula at the University of Montana. The temperatures were uncomfortably hot which seemed to tire the players in the later rounds.

ROUND 1

Motta 1 vs. Lynch 0
Jensen 0 vs. Stubberud 1
Erickson 0 vs. Heikkinen 1

Motta lures Lynch into the dangerous and deadly BDG and snags a full point. Jensen employs the Smith-Morra Gambit against Kip but after failing to keep up the necessary aggression Mike loses the initiative and in the face of an excellent counterattack surrenders to the clock. Erickson decides to use the King's Indian Attack against Phil but succumbs to Heikkinen's better developed army.

BLACKMAR-DIEMER GAMBIT

W: Paul Motta (2090)
B: Bill Lynch (1927)

1. d4 Nf6 2. Nc3 d5 3. e4 d:e 4. f3 e:f 5. N:f3 B:f5 6. Ne5 e6 7. g4 Bg6 8. Qf3 c6 9. g5 Q:d4?! 10. N:g6 h:g 11. g:f Q:f6 12. Qg3 Qh4 13. Bf4! Be7 14. O-O-O Q:g3 15. B:g3 Nd7 16. Ne4 e5 17. Bc4 Nf6 18. Rhe1 N:e4 19. R:e4 Bg5+ 20. Kb1 f6? 21. B:e5 f:e 22. R:e5+ Be7 23. Rde1 O-O-O 24. R:e7 R:h2 25. R:g7 Rg2 26. b3 g5 27. Ree7 Rg1+ 28. Kb2 Resigns (1-0)

ROUND 2

Erickson 0 vs. Jensen 1
Stubberud 1 vs. Motta 0
Heikkinen 1 vs. Lynch 0

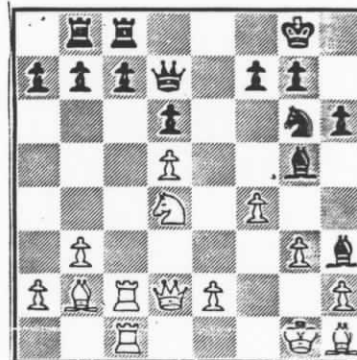
This round proved to be quite exciting as the players began to be more aggressive and take some chances. Ron plays a King's Indian Attack again, this time against Mike. However, he loses his two rooks to minor pieces and Jensen racks up the point. Paul takes a chance with the sharp Elephant Gambit against Stubberud. At first Kip obtains an advantage but then gives it away to Motta who then proceeds to give it all back and more in time trouble. Stubberud scores a decisive point as Paul was a slight favorite to win the tournament. The real excitement came about when Phil and Bill clashed in the English Opening.

ENGLISH OPENING

W: Phil Heikkinen (2071)
B: Bill Lynch (1927)

1. c4 e5 2. Nc3 Nf6 3. Nf3 d6 4. d4 e:d 5. N:d4 Be7 6. g3 Bd7 7. Bg2 Nc6 8. O-O O-O 9. b3 Oc8 10. Re1 Ne5 11. Bb2 Bh3 12. Bh1 Rb8 13. Nd5 N:d5 14. c:d Bf6 15. Qc2 Qd7 16. Rac1 Rfc8 17. Qd2 Ng6 18. Rc2 h6 19. Rec1 Bg5 20. f4?

A mistake induced by the fact that Lynch only had eight minutes left to make 20 more moves. The only move was e3 when f4 could follow after.



20. ... N:f4! 21. e3

Phil decides against accepting the piece sacrifice and having his king chased across the board after 21. g:f Qg4+ 22. Kf2 Bh4+ 23. Ke3 Re8+. Instead he opts to keep the position closed and see if Black can make time control.

21. ... Ng6 22. Nf3 Qf5 23. N:g5 Q:g5 24. e4 Qg4 25. Qe2 Qg5 26. Bg2 B:g2 27. K:g2?? Nf4+ 28. Kh1 N:e2

In the time scramble Phil makes a terrible blunder but Bill does not have enough time left to play the game out.

29. R:e2 Re8 30. R:c7 Black lost on time! 1-0

Jensen 1/2 Heikkinen
Motta 1 vs. Erickson 0
Lynch 0 vs. Stubberud 1

W: Mike Jensen (2030)
B: Phil Heikkinen (2071)

Erickson 1/2 Lynch
Heikkinen 1 vs. Stubberud 0
Jensen 1 vs. Motta 0

...fired and hot from the 90 plus degree weather, the combatants sat down to go at it again. Heikkinen and Jensen transpose into a Pirc with Mike getting the upper hand with a passed e-pawn. However, Phil finds counterplay on the queenside with his pawn majority and is able to secure a draw. Paul faces the Pirc in a battle with Erickson. Despite an attack against the Black king, Motta's initiative is lost to Ron's counterattack on the queenside. The tide turns, though, and Paul's minor pieces wreak havoc and the win is scored. In a most interesting game, Kip looks like he is getting crushed by Lynch in a c3 Sicilian but squirms his way to a win.

1. d4 Nf6 2. Nf3 g6 3. Bg5 Bg7 4. Nbd2 O-O 5. e4 d6 6. c3 Nbd7 7. Bd3 c6 8. O-O Qc7 9. a4 a5 10. Re1 e5 11. d:e N:e5 12. N:e5 d:e 13. h3 Be6 14. Bc4 Rfe8 15. Qf3 Nd7 16. Rad1 B:c4 17. N:c4 Nc5 18. Be3 Bf8 (18. ...N:a4? is met by 19. b3 followed by 19... N:c3 20. Bb6) 19. Bg5 N:a4 20. Rd2!

Jensen gets compensation for the pawn by controlling the d-file with initiative.
20. ... Be7 21. Red1 Nc5 22. Be3 Rad8 23. R:d8+ R:d8 24. R:d8+ O:d8 25. N:e5 f6 26. Ng4 Ne6 27. Qe2 b5 28. Qf3 Ng5?

In time pressure Phil makes an error which gives Mike a passed e-pawn and an edge.

29. B:g5 f:g 30. e5 c5 (... h5 looks good)
31. Qc6 b4 32. Qe6+ Kg7 33. Ne3 h5 34. Nd5 Bf8 35. c4 a4 36. Qc6 a3 37. b:a b:a 38. Qb7+ Kh6 39. e6 a2!

This critical round saw Phil and Kip battle in an important game. Heikkinen knew that he had to make a charge to the finish and that Stubberud would play the sharp Dragon variation vs. 1.e4 so Phil pushed the king pawn. A positional struggle ensued and the point was scored by White. In the other important game, Paul played the exciting Elephant Gambit against Mike in a bid to chalk up a much needed win. Motta found a way to secure a passed pawn and obtain a probable winning advantage but in time pressure throws it away and his chance to at least tie for first place. Ron plays the King's Indian Attack vs. Bill but after 19 moves they agree sensibly to a draw.

W: Mike Jensen (2060)
B: Paul Motta (2090)

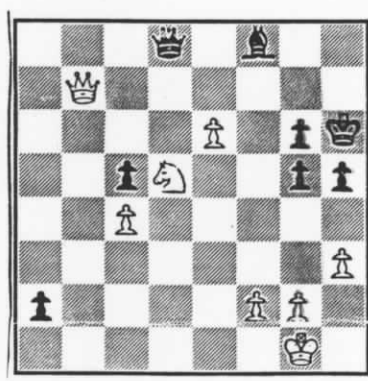
SICILIAN DEFENSE

W: Bill Lynch (1927)
B: Kip Stubberud (2047)

1. e4 c5 2. c3 Nf6 3. e5 Nd5 4. d4 e6 5. Nf3 Nc6 6. c4 Ndb4 7. d5 Nb8 8. a3 N4a6 9. d6 f6 10. Bf4 Nc6 11. Bd3 f:e 12. N:e5 N:e5 13. B:e5 Qg5 14. Bg3 g6 15. Nd2 Bg7 16. Nf3 Qh5 17. Qc2 b6 18. Be4 Rb8 19. O-O Bb7 20. Rfe1 O-O 21. Qa4?!

Bill has a good position and can further it with 21. Rab1.
21. ...B:b2 22. B:b7?

In this position also Rab1 would maintain as 22...Bc3 23. B:b7 B:e1 24. Q:a6 Bc3 25. Q:a7 or 24. ...Ba5 25. Ne5 are advantageous for White.
2. ...B:a1 23. Q:d7 Rf7
24. Q:e6 R:b7 25. Qc8+ Kg7 Be5+ B:e5 27. N:e5 Qf5! 28. Q:f5 R:f5 29. Nc6 Rd7 30. Re7+ R5f7 31. R:f7+ K:f7 Resigns (0-1)

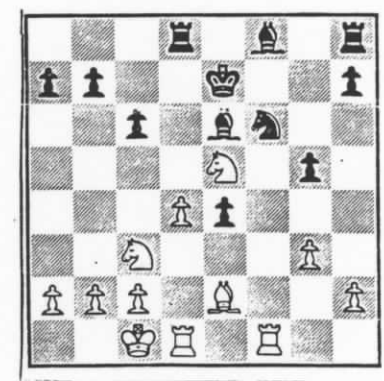


40. Qa7 Qd6 41. Qa8 Bg7 42. e7 DRAWN

(The best continuation for both would be 42. ... Q:e7 43. N:e7 a1(Q)+ 44. Q:a1 45. B:a1 and draw. A good game!)

AFTER THREE ROUNDS:

Kip Stubberud	3
Phil Heikkinen	2.5
Paul Motta	2
Mike Jensen	1.5
Bill Lynch	0
Ron Erickson	0



(after 18. Red1)

18. ... Nd5! 19. N:d5 c:d 20. Bh5!

A good move! Now White controls the f7 square. If Black can break the grip then he can probably win the endgame.

20. ... Rc8 21. c3 Bg7
 22. Nf7 Rhg8 23. N:g5 Bh6
 (If 23. ... B:d4 then 24. R:d4
 R:g5 25. Rf7+ Ke6 26. B:g4+
 R:g4 27. R:h7 or R:b7 with
 active rooks for White.)
 23. ... Bh6 24. h4 B:g5
 h:g R:g5 25. g4 Rf8
 Trying to take control of
 the f-file and simplify down.
 27. R:f8 K:f8 28. Rf1+ Ke7
 29. Rf4 b5!?

If Jensen gets the c4 break
 in then the passed e-pawn will
 probably fall.

30. Kd2 Rg8 31. a3 Rc8
 32. Rf1 Rg8 33. Ke3 a5
 34. Rg1 Bf7?

A serious mistake made in
 serious time pressure. Not
 only did Black have to keep
 the bishop but he also had a
 chance to grab the f-file with
 Rf8.

35. B:f7 K:f7 36. Kf4 Ke6
 37. Rh1 Rf8+ 38. Ke3 Rf3+
 39. Ke2 Rf7?

Paul misses a chance to
 gain back a slight advantage
 with 39. ... Rf4!

40. Rh6+ Rf6 41. R:h7
 Now White must fight for a
 draw.

41. ... a4 42. Rh5! Rf7
 Re5+ Kd6 44. g5 Rf8?
 The last chance for at least
 a draw was 44. ... Rf4! with
 Rg4! to follow.

45. g6 Rg8 46. Rg5! Ke6
 47. Ke3 Rd8 48. g7 Kf7
 49. g8(Q)+ Resigns (1-0)

After 49. ... R:g8 50. R:d5
 the endgame is lost for Black.

SICILIAN DEFENSE (Dragon Variation)

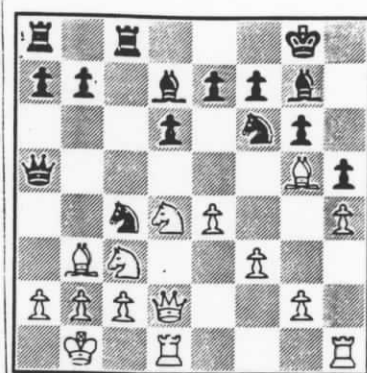
W: Phil Heikkinen (2071)
 B: Kip Stubberud (2047)

1. e4 c5 2. Nf3 d6 3. Nc3
 g6 4. d4 c:d 5. N:d4 Bg7
 6. Bc4 Nc6 7. Be3 Nf6 8. f3
 Bd7 9. Qd2 Qa5 10. O-O-O
 O-O 11. Kb1 Rfc8 12. Bb3
 Ne5 13. h4

Up to this point a thematic
 position has arisen where
 Black looks for the exchange
 see R:c3 and White looks to
 Nd5 and advance h4-h5

13. ... h5?!
 (13. ... Nc4 was probably
 better, aiming for advances on
 the queenside and leaving the
 queen a chance to help out on
 the kingside.)

14. Bg5 Nc4?!



Leads to at best a weak,
 isolated d-pawn. 14. ... Qd8 or
 Kf8 may be better.

15. B:c4 R:c4 16. B:f6 B:f6
 17. Nd5 Q:d2 18. N:f6+ K:g7
 19. N:h5+ g:h 20. R:d2 Kh6
 21. b3

The endgame should be won
 for White, the weakness on g2
 easily guarded by the knight.

21. ... Rcc8 22. Ne2 f6
 23. Nf4 Rg8 24. Rf1 b5
 25. Rff2 Bc6 26. Rd3 a5
 27. Rfd2 Rgc8 28. Rc3 Ra6
 29. Nd5 b4 30. Rc4 Ra7
 31. Ne3 Kg6 32. Kb2 Rb7
 33. Rdd4 Rb6 34. Rd5 Ra8
 35. Rdd4 Ra7 36. a3 b:a+
 37. K:a3 Bd7

The Black pawns are weak
 and now White will pick up
 another one.

38. Nd5! Rbb7 39. N:e7+
 Kf7 40. Nc8 B:c8 41. R:c8
 Ke6 42. Rc6 Rd7 43. Rd5
 Rac7 44. R:c7 R:c7 45. c4
 Resigns (1-0)

ROUND 5

Stubberud 1 vs. Erickson 0
 Motta 1 vs. Heikkinen 0
 Lynch 1 vs. Jensen 0

This was the final round
 for the State Champion title.
 Erickson was trying hard to
 fight off Kip with the Pirc
 Defense and at least secure a
 draw but Kip mowed Ron
 down in grand style with
 some fine play. Bill Lynch
 played a sharp game against
 former State Champ Mike
 Jensen and won handily. In
 the contest with Motta, Phil
 was looking to score at least

a draw to tie for 1st Place; a
 win would give Heikkinen
 clear first and the title. But
 Paul had other ideas. Phil
 defended with the Pirc and
 after Motta made an error
 in the opening Heikkinen had
 the advantage and the
 initiative. Despite the bind,
 Paul managed to wind his
 way out to a win as Phil
 traded pieces and allowed a
 passed pawn on the queen-
 side which Motta gladly
 pushed to victory. As a
 result, Phil had to settle for
 2nd Place. Congratulations
 to the new State Champion
 Kip Stubberud!

PIRC DEFENSE

W: Paul Motta (2090)
 B: Phil Heikkinen (2071)

1. d4 Nf6 2. Nc3 g6 3. e4
 d6 4. Bc4 Bg7 5. Qe2 Nc6
 6. e5 Nd7 7. B:f7+?! K:f7
 8. e6+ Kg8 9. e:d Q:d7 10. d5
 Nd4 11. Qd2 Qf5 12. Kd1 c6
 13. d:c b:c 14. f3 Ba6 15. Ne4
 Qb5 16. Ng3 h5 17. Nge2 N:
 18. Q:e2 Q:e2 19. N:e2 B:e2
 20. K:e2 Rb8 21. c3 Kf7
 22. Kd3 Rb5 23. Re1 Rhb8
 24. b3 a5 25. Rb1 a4 26. b4
 c5 27. a3 c:b 28. c:b Rc8
 29. Bb2 B:b2 30. R:b2 Rd5+
 31. Ke2 Rb5? 32. Rd1! g5
 33. Rd3 d5 34. Kd2 Ke6
 35. Rc3 Kd7 36. R:c8 K:c8
 37. Rc2+ Kd7 38. Kd3 e5
 39. Rc1 h4 40. h3 Rb8
 41. Rc5 Rb6 42. R:d5+ Ke6
 43. Ke4 Rc6 44. R:e5+ Kf6
 45. Rf5+ Kg6 46. Rc5 Re6+
 47. Kd5! Re3 48. b5 R:a3
 49. b6 Rb6 50. Kc6 a3
 51. Ra5 Rc3+ 52. Kb7 Rc2
 53. Ka7 R:g2 54. b7 Rb2
 55. b8(Q) R:b8 56. K:b8 a2
 57. R:a2 Kf5 58. Ra4 Resigns

FINAL STANDINGS

Kip Stubberud	4.0
Phil Heikkinen	3.5
Paul Motta	3.0
Mike Jensen	2.5
Bill Lynch	1.5
Ron Erickson	0.5

BOZEMAN II OPEN

August 11-12, 1990

P1 Name	Rate	RD1	RD2	RD3	RD4	TOT
1 Zygmund Mayer	2051	W6	L4	W5	W3	3.0
2 Paul Motta	2152	W5	L3	W9	W4	3.0
3 Ron Matous	1960	W7	W2	D4	L1	2.5
4 Phil Heikkinen	2049	W8	W1	D3	L2	2.5
5 Les Brennan	1754	L2	W11	L1	W6	2.0
6 Bill McBroom	1717	L1	W10	W7	L5	2.0
7 Kip Limesand	1659	L3	W13	L6	W9	2.0
8 Arman Goplen	1674	L4	L9	W11	W10	2.0
9 Ron Erickson	1835	D10	W8	L2	L7	1.5
10 Steve Scarff	1634	D9	L6	W13	L8	1.5
11 Don Price	1369	L12	L5	L8	W13	1.0
12 Fidelity Par E	2100	W11	--	--	--	1.0
13 Hardy Grover	1398	½BY	L7	L10	L11	0.5

RD2 BD2 Heikkinen-Mayer ENGLISH 1 c4 Nf6
 2 Nc3 e5 3 g3 d5 4 cxd5 Nxd5 5 Bg2 c6 6 N
 f3 Nxc3 7 bxc3 Qc7 8 0-0 Be7 9 d4 exd4 10 cxd4 0-0 11 Bf4 Qa5 12 Qb3 Nd7 13 a4 Nb6 14 B
 d2 Qa6 15 e4 Be6 16 Qc2 Bc4 17 Ne5 Rad8 18 a5 f6 19 axb6 Bxf1 20 Rxa6 fxe5 21 Rxa7 Ba6
 22 Bf1 Bxf1 23 Kxf1 exd4 24 Rxb7 Bf6 25 f4 h5 26 Bb4 d3 27 Qb3+ Kh7 28 Bxf8 d2 29 Qd1 B
 c3 30 Bxg7 Bxg7 31 Qxh5+ Kg8 32 Qf7+ Black Resigns. 1-0

COLLE SYSTEM 1 d4 Nf6 2 Nf3 c5 3 e3 d5 4 Nbd2 Bg4 5 c3 e6 6 Bd3 Nbd7 7 Qc2 Qc7 8 0-0 D
 d6 9 Re1 Bxf3 10 Nxf3 0-0 11 g3 Rac8 12 Qe2 a6 13 Kg2 Rfe8 14 Nd2 Bf8 15 e4 e5 16 dxc5
 Nxc5 17 exd5 Nxd3 18 Qxd3 Red8 19 c4 b5 20 b6 bxc4 21 bxc4 Bb4 22 Re2 Bxd2 23 Rxd2 Qxc4
 24 Qxc4 Rxc4 25 Rb1 h6 26 Bb2 Rxd5 27 Rxd5 Nxd5 28 Bxe5 Ra4 29 Rb8+ Kh7 30 Rd8 Nf6 31 B
 xf6 gxf6 Draw Agreed. ½-½

RD4 BD1 Heikkinen-Motta ENGLISH 1 c4 e5 2 g3 Nf6 3 Bg2
 Nc6 4 Nc3 Bb4 5 Nd5 Nxd5 6 cxd5 Ne7 7 a3 Bc5 8 b4 Bd4 9 Rb1 d6 10 e3 Bb6 11 Bb2 f5 12
 f4 0-0 13 fxe5 dxe5 14 Bxe5 Nxd5 15 Ne2 Be6 16 0-0 Qe7 17 Nd4 g6 18 Nxe6 Qxe6 19 Qb3 Ra
 d8 20 Ba1 c6 21 Rbd1 Rf7 22 Bxd5 Qxd5 23 Qc3 Kf8 24 Qh8+ Ke7 25 Qe5+ Qxe5 26 Bxe5 Rd3
 27 Bc3 Bxe3+ 28 Kg2 Bb6 29 Rf3 Rxf3 30 Kxf3 Kd6 31 h3 Kd5 32 Re1 Bc7 33 a4 Bd6 34 b5 cx
 b5 35 axb5 Re7 36 Ra1 Bc5 37 Ra4 b6 38 g4 Re4 White's Flag Falls. 0-1

RD4 BD2 Mayer
 -Matous GROB ATTACK 1 g4 d5 2 Bg2 e5 3 c4 Bxg4 4 Qb3 Qc8 5 cxd5 Bd6 6 Nc3 Nf6 7 d3 Nb
 d7 8 Be3 0-0 9 Ra1 Nc5 10 Qc4 b6 11 b4 Nb7 12 Nf3 Qd7 13 Ng5 Qe7 14 a3 a5 15 N5e4 Nxe4
 16 Nxe4 axb4 17 Nxd6 cxd6 18 Qxg4 bxa3 19 Bg5 f6 20 Be3 Nc5 21 Bxc5 bxc5 22 Qe6+ Rf7 23
 0-0 Ra4 24 Rb1 Rb4 25 Ra1 Qxe6 26 dxe6 Ra7 27 Bd5 Kf8 28 Rfb1 Ke7 29 Rb3 Rd4 30 e4 Rda4
 31 f3 g5 32 Rb8 a2 33 Rb2 RD4 34 Bc4 d5 35 exd5 g4 36 Rbxa2 Rxa2 37 Rxa2 gxf3 38 Ra2+ K
 f8 39 Rf7+ Kg8 40 Rxf6 Rg4+ 41 Kf2 Black Resigns. 1-0

MIDSUMMER OPEN

July 14-15, 1990

P1 Name	Rate	RD1	RD2	RD3	RD4	RD5	TOT
1 Zygmund Mayer	2089	W6	W3	W2	W4	W5	5.0
2 Nick Pazderic	1801	W8	W11	L1	D3	W7	3.5
3 Kip Limesand	1676	W14	L1	W10	D2	W4	3.5
4 Richie Harris	1288	D5	W7	W9	L1	L3	2.5
5 Arman Goplen	1686	D4	W12	L11	W6	L1	2.5
6 Sherwood Moore	1554	L1	W8	D12	L5	W13	2.5
7 Ray Jorgenson	1607	D13	L4	W8	W12	L2	2.5
8 Harold Moneyhun	1457	L2	L6	L7	W9	W12	2.0
9 Bill McBroom	1747	L12	W13	L4	L8	W14	2.0
10 Lyle Petersen	1421	L11	W14	L3	W13	WD	2.0
11 Dan McCourt	1755	W10	L2	W5	WD	--	2.0
12 Hardy Grover	1398	W9	L5	D6	L7	L8	1.5
13 Lewis Race	NON	D7	L9	W14	L10	L6	1.5
14 Eriiel Mayer	1191	L3	L10	L13	BYE	L9	1.0

RD3 BD1 Mayer-Pazderic GROB ATTACK
 1 g4 d5 2 Bg2 Bxg4 3 c4 Nf6 4 cxd5
 c6 5 Nc3 Nxd5 6 Nxd5 cxd5 7 Qb3 Qc7
 8 Bxd5 Be6 9 Qxb7 Qe4 10 Bxe6 fxe6
 11 Qxa8 Black Resigns. 1-0

RD4 BD6 Moneyhun-McBroom FROM'S
 GAMBIT 1 f4 e5 2 fxe5 d6 3 exd6 Bx
 d6 4 Nf3 g5 5 g3 b6 6 Bg2 Bb7 7 d4
 g4 8 Nh4 Bxg2 9 Nxc2 h5 10 Qd3 Nc6
 11 c3 Qd7 12 Bf4 0-0-0 13 Nd2 Nf6 14
 0-0 Nd5 15 Bxd6 Qxd6 16 Rxf7 Rde8 17
 Nc4 Qe6 18 Raf1 Kb7 19 a4 a6 20 e4
 b5 21 exd5 Qxd5 22 Ne3 Qd8 23 axb4 N
 e5 24 Qe4+ Black Resigns. 1-0 Nick
 directed, and wanted to specially
 thank McBroom and Moore for their
 assistance.

RIMROCK OPEN

August 25-26, 1990

P1 Name	Rate	RD1	RD2	RD3	RD4	TOT
1 Nick Pazderic	1801	W10	W8	D2	W5	3.5
2 Phil Heikkinen	2049	W5	W4	D1	D3	3.0
3 Zygmund Mzyer	2051	W9	D6	W4	D2	3.0
4 Les Brennan	1774	W7	L2	L3	W6	2.0
5 Kip Limesand	1659	L2	W9	W7	L1	2.0
6 Steve Scarff	1634	W11	D3	D8	L4	2.0
7 Harold Moneyhun	1443	L4	W10	L5	W8	2.0
8 Chad Robinson	1742	W12	L1	D6	L7	1.5
9 Arman Goplen	1674	L3	L5	D10	W12	1.5
10 John Kennedy	1446	L1	L7	D9	BYE	1.5
11 Bill Lynch	1955	L6	F	W12	WD	1.0
12 Eriel Mayer	1187	L8	BYE	L11	L9	1.0

WYOMING VS MONTANA MATCH Sept. 15-16, 1990

M1 Paul Motta	2152	LY1	DY1	WY2	LY2	1.5
M2 Phil Heikkinen	2049	LY2	WY2	LY1	WY1	2.0
M3 Kip Limesand	1659	WY3	WY3	LY4	WY4	3.0
M4 Hardy Grover	1405	WY4	WY4	WY3	LY3	3.0
						9.5
Y1 Harold Moye	2021	WM1	DM1	WM2	LM2	2.5
Y2 Ron Matous	1960	WM2	LM2	LM1	WM1	2.0
Y3 Murray Strong	1507	LM3	LM3	LM4	WM4	1.0
Y4 Harold Moneyhun	1443	LM4	LM4	WM3	LM3	1.0
						6.5

1989/90 MONTANA POSTAL CHAMPIONSHIP

P1 Name	1	2	3	4	5	6	7	8	TOT
1 Bill Lynch	x	½	1	1	1	½	1	1	6.0
2 Paul Motta	½	x	½	1	½	1	1	1	5.5
3 Sherwood Moore	0	½	x	½	1	1	1	1	5.0
4 Bill McBroom	0	0	½	x	½	1	½	½	3.0
5 Les Brennan	0	½	0	½	x	1	0	½	2.5
6 Don Price	½	0	0	0	0	x	1	1	2.5
7 Duane Hildenstab	0	0	0	½	1	0	x	½	2.0
8 John Kennedy	0	0	0	½	½	0	½	x	1.5

CHINOOK OPEN

October 13-14, 1990

P1 Name	Rate	RD1	RD2	RD3	RD4	RD5	TOT
1 Mike Jensen	2016	W11	W9	D2	W6	W7	4.5
2 Ron Matous	1960	W15	W7	D1	W4	L3	3.5
3 Zygmund Mayer	2051	W10	D16	L4	W8	W2	3.5
4 Romie Carpenter	1849	W12	D5	W3	L2	W9	3.5
5 Arman Goplen	1674	W8	D4	L6	W11	W12	3.5
6 Thad Suits	1907	½BY	W13	W5	L1	W10	3.5
7 Kip Limesand	1659	W18	L2	W11	W13	L1	3.0
8 Bob Melquist	1033	L5	W12	W17	L3	W14	3.0
9 Bill McBroom	1717	W19	L1	W16	D10	L4	2.5
10 Bob Mitchell	1602	L3	W17	W14	D9	L6	2.5
11 Ken Cook	1379	L1	W19	L7	L5	W18	2.0
12 Eriel Mayer	1187	L4	L8	W19	W18	L5	2.0
13 Doug Hansen	1649	W14	L6	W15	L7	WD	2.0
14 Seth Stuckey	922	L13	BYE	L10	W15	L8	2.0
15 Richard Stuckey	1190	L2	W18	L13	L14	W17	2.0
16 Dennis Petrak	1697	W17	D3	L9	WD	—	1.5
17 Jason Bird	1106	L16	L10	L8	W19	L15	1.0
18 T.J. Schwartz	979	L7	L15	BYE	L12	L11	1.0
19 Mike Lorenz	1129	L9	L11	L12	L17	BYE	1.0

GOOD NEWS / BAD NEWS . . . Bill Lynch

MCA President Paul Motta has picked up on a discussion of some perceived problems in the operations of the Association, which began while Les Brennan was President, and is trying to forge a new Constitution with a companion set of bylaws which would address the concerns and formalize many procedures which go on by the weight of tradition.

The GOOD NEWS is that everyone so far involved in discussion of these ideas seems passionately concerned about the future welfare of the organization, and the future of Chess in Montana.

The BAD NEWS is that being human, and passionate, we are not above the temptation to resort to personal attack when our views are threatened.

It is unlikely that all of the features of the draft document Motta assembles will receive universal acclaim, despite considerable deliberation beforehand. The Officers will review his work, and presumably negotiate some amendments. If a consensus can be achieved, the new Constitution will then be submitted to the membership for a vote to accept, or reject and retain the present structure.

My view is that the Association could benefit from some changes, particularly in the formalization of goals and procedures. Still, I have no idea as yet whether I'll vote for or against this group of reforms. But, I do know that I hope to avoid "throwing out the Baby with the bath water". We need to be certain to benefit from the positive suggestions that come forth through this process.

Games from all of the events listed on this page, with the exception of the postal game to be found on page 7, will have to wait until the next issue. Paul Motta has promised an article on the Wyoming-Montana team match, and I believe Thad Suits is going to send a selection of games from the Chinook. I also hope to include another update on the UCCC events, on which space available has left us about six months behind. Remember that any and all articles or material are always welcome.

-Editor

POSTAL PRAXIS

Bill Lynch

This was the most enjoyable game that had during the recently completed 1989-90 Montana Postal Championship:

Bill Lynch-Sherwood Moore

GORING GAMBIT

1 e4 e5
2 Nf3 Nc6
3 d4 exd4
4 c3 dxc3

The Goring Gambit accepted. Declining by 4...d5, 4...Nf6 or 4...d6 is sound, but the games are still tactical battles which is what White seeks.

5 Nxc3

Less often played than 5 Bc4 which is really wild, my Chess Digest pamphlet describes this Knight move as "rejuvenated".

Bb4
6 Bc4 d6
7 O-O Bxc3
8 bxc3 Qe7

Out of "the book". My pamphlet gives only 8...Nf6, 8...Be6 and 8...Bg4. So, how does White strive for advantage?

9 Qb3

Possible because Black does not have 9 ...Na5 10 Qb5+ c6 because the Queen is no longer home to protect the Knight.

Nf6

10 e5!

White's game is all frontal assault!

Nxe5
11 Nxe5 dxe5
12 Ba3 c5

A move I had overlooked. Now White is two pawns down. I was wondering: Can this be sound?

13 Bb5+

13 Qb5+ Nd7! does not seem to give White anything.

Kf1

At this point I discovered that after 9...Nf6 we had transposed back to "the book". Here Chess Digest prefers 13... Bd7 14 Bxd7 Qxd7 giving back 15 Bxc5 based on 15...Ne4 16 Ba3 Nd2 17 Qb4 O-O-O! (Not 17...Nxf1 18 Rd1! Qe6 19

Qb5+ Qc6 20 Qxe4+ Qe6 21 Qxg7) 18 Rfel Qc7 but I feel White has opportunities for improvement. 14 Rfel

My booklet gives only 14 f4! as effective, but I could find no good continuation for Black after my choice. White intends 15 c4 freeing the Queen to go to the Kingside and opening the long diagonal for the dark squared Bishop. Can anyone "bust" my plan?

Be6

Or 14...b6 15 c4 Bb7 16 Qe3 e4 17 Bb2 and 18 f3. Or 14...g3 15 c4 Kg7 16 Qg3 e4 17 Bb2 (16...Nh5 17 Qxe5+ Qxe5 18 Rxe5 b6 19 Bb2).

15 c4 b6

Not 15...a6 16 Ba4 b5?! 17 Qe3! or 15...Nd7 16 Bxd7 Bxd7 17 Qxb7! If 15...e4 16 Qe3 b6 17 Bc6 Rd8 18 Bxe4 Nxe4 19 Qxe4 with Bb2 to make Black uncomfortable. Also 15...Qc7 16 Qe3 b6 17 Bb2 is difficult for Black.

16 Bb2 Nd7
17 Bxd7 Qxd7
18 Rad1!

No hurry to take the e-pawn. Black's Queen has no good place to go, so why not develop and make her move?

Qc8

Or 18...Qe7 19 Bxe5 Rd8 20 Qg3!

19 Bxe5 f6
20 Qf3

Note that Black's Queen is not able to come to f7 to break this pin.

Bg4

20...Bxc4 ignores the threat of 21 Bxf6! and 20...Kf7 invites 21 Qh5+ g6 22 Qf3. After 20 ...Ke7 21 Bd6+ Kf7 22 Qh5+ g6 23 Qh6 what does Black do?

21 Bd6+ Kf7
22 Re7+ Kg6
23 Qg3 Qf5
24 hxg4 Qxg4
25 Qd3+

No good reason to trade Queen's when the King hunt is on!

f5

Not 25...Qf5 or 26 Rxc7+ wins the Queen, but 25...Kh6 struggles on a little longer.

26 Be5 Resigns.

A fun game - for White! This was Sherwood's only loss - and put me in position to win.

USCF and MCA or Other State Membership required in all Montana tournaments. USCF tournament membership at \$1.50/game played (soon to be replaced by introductory membership). Experts enter MT events for half of listed entry fees. Masters enter MT events for free.

NOVEMBER 3-4, 1990: TURKEY OPEN ### Room 362, Social Science Bldg., Univ. of MT Campus, Missoula, MT 59812. 5 Round Swiss: 9:30am, 2:00pm, 7:00pm; 8:30am, 1:00pm. 40 moves / 2 hours, 20 moves / hour. Entry fee = \$15 advance, \$20 at site 8:00-9:00am Nov. 3. Prizes 1st - \$100, 2nd - \$50; Best Under 1700 - \$25, 1500 - \$15; Plaque - Biggest Upset. Sponsor - University-Community Chess Club / William H. McBroom, 2321 Raymond Ave., Missoula MT 59802. 406-728-4654 after 5.

DECEMBER 1-2, 1990: BOZEMAN DOUBLE ### Room 1128, Wilson Hall, MSU Campus - Cleveland St., Bozeman, MT 59715. SATURDAY: Four man Quads - 3 Round Robin: 10:00am, 2:30pm, 6:30 pm. 50 moves / 2 hours, 25 moves / hour. Full rating effect. Entry fee = \$15 advance, \$17 at site 9:00-9:45am Dec. 1. Prizes - 1st-\$40, 2nd-\$15 per Quad. SUNDAY: 5 Round Swiss: 9:00am, 10:15am, 11:30am, 1:30pm, 2:45pm. Game / 30 minutes. 1/4 rating effect. Entry fee = \$5 advance, \$7 at site 8:45-9:00am Dec. 2. Prizes - 1st-40%, 2nd-20%; best under 1800 1st-25%, 2nd-15%. Sponsor - Montana Chess Association / Zygmund Mayer, P.O. Box 272, Livingston, MT 59047. 406-222-3929

JANUARY 19-20, 1991: WINTER OPEN ### Conference Room, Plaza Office Building, 1629 Ave. D, Billings, MT 59102. 4 Round Swiss: 1:00pm; 6:00pm; 8:00am, 1:00pm. 40 moves / 2 hrs, 20 moves / hour. Entry fee = \$10 advance, \$15 at site Noon-12:30pm Jan 19. Prizes - \$\$ per entries. Sponsor = Montana Chess Association / Les Brennan, P.O. Box 2404, Colstrip MT 59323, 406-748-2154.

FEBRUARY 16-17, 1991: VALENTINE OPEN ### Room 362, Social Science Bldg., U of MT Campus Missoula, MT 59812. 5 Round Swiss: 9:30am, 2:00pm, 7:00pm; 9:00am, 2:00pm. 40 moves / 2 hours, 20 moves / hour. Entry fee = \$8 advance, \$10 at site 8:00-9:00am Feb. 16. Prizes Trophies - 1st, 2nd, 3rd and Biggest Upset. Sponsor - University-Community Chess Club / Daniel McCourt, 608 West Central, Missoula, MT 59801. 406-721-2706

Zygmund Mayer has established a small lead in the 1990-91 Montana Grand Prix Competition with a total of 35.21 points. Phil Heikkinen is currently in second position with 29.16 points while last year's Champion Paul Motta is third with 24.97 points. Our new State Champion, Kip Stubberud, stands fourth with 20.75 points. The other players who have reached "double figures" are Nick Pazderic - 17.44, and Mike Jensen - 10.00.

*****8*****

1310 5th Ave. N.

PRESORTED
FIRST CLASS

Russell
Chess Referee

12475278 1987 9010
Thad Suits
3601 1st Ave. N.
Great Falls MT 59401



Billings, Montana 59106
4245 Palisades Park Dr.
Editor, Secretary/Treasurer
William M. Lynch

\$3/yr Junior \$50/yr Patron
Membership = \$6/yr Regular
by Education & Competition
Promoting Chess Excellence
U.S. CHESS FEDERATION
an affiliate of the
MONTANA CHESS ASSOCIATION
published by the
MONTANA CHESS NEWS
#####

