

# MONTANA CHESS NEWS

Volume 26, Issue 3 — August 2001

*In this issue:*

**— MICHAEL RUNGEE WINS 2001 OPEN —**

**DENNIS PETRAK RECEIVES OUTSTANDING SERVICE AWARD**

**TRIBUTE TO OUR CHESS FRIEND - GARY YOUNKER**

**JOHANSSON WINS ASTRONOMY DAY OPEN**

**UPCOMING TOURNAMENTS:**

**STATE CLOSED, BARTO MEMORIAL, CHINOOK, TURKEY**

## Michael Runge sweeps 2001 State Open

On June 2-3, 2001 the MCA held its 66<sup>th</sup> Montana State Open in Bozeman, MT. Twenty-two players participated in the 5 round Swiss. Michael Runge turned in a stellar performance, winning all 5 of his contests. Michael played against several strong players who regularly score well in Montana tournaments, including Jan Johansson, Paul Motta, and James Skovron. Three players tied for second with 4 points – Alex Dawson, Jan Johansson, and David Duke.

Michael Runge has not played tournament chess for several years, due in part to his job and in part due to his health. Michael works for the Billings all news radio station, which requires him to be at his job by 4:00 am. His usual bedtime is 5:00 p.m.

Mike Stubblefield of Missoula, rated 1512, had a very good tournament with 3 points. Mike drew veterans Jim Skovron (1875) and Michael Long (1801). Devin Gray (1239) upset Jim Loy (1765) of Bozeman. Gray played a King's Gambit, known for its dynamic possibilities.

The business meeting started at 2:00 on Sunday and went for 3 hours. For the first hour, the members debated the use of proxy votes. The members elected the

following as the Board for the year 2001-02.

President – Jan Johansson  
Secretary-Treasurer – Paul Motta  
Executive Vice-Pres. – Sherwood Moore  
Western Vice-Pres. – Dan McCourt  
Eastern Vice-Pres. – Mel Drake

Also at the business meeting, the members and the out-going Board recognized the efforts and contributions of Dennis Petrak, who recently defended the MCN in Great Falls. Dennis also delivered a “down to earth” speech encouraging the members to work together and not be divisive. Thank you Dennis.

The Junior Chess Champion of Montana, Aldin Barnes of Helena, worked as the secretary for the business meeting. Under difficult circumstances, Aldin did a good job.

Steve Scarff did a great job directing the tournament. Steve secured the nice playing site on the campus at MSU Bozeman. Furthermore, Steve did not play in the tournament, leaving his full attention to the duties of director. Well done, Steve, thank you.

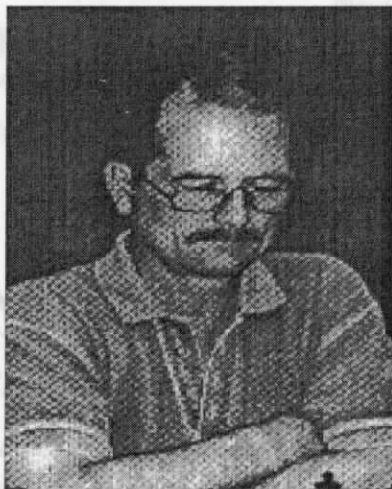
# REMEMBERING A FRIEND OF MONTANA CHESS GARY YOUNKERS

By Dan McCourt –  
Western Vice President

In philosophical moments, several-time State Champ, Alex Dawson, cautions chess players to guard against the impulse to search for the perfect move. We don't play perfect games anyway. Better just to get a line of thought and go with that. It's probably much the same when we reflect upon the passing of a friend. Straining to get every detail into a perfect picture is not only too difficult; it is likely not even the right idea. Better is to reflect often and let the various details and images emerge on their own. And, I guess that's how we shall remember Gary Younker --- frequently and gratefully.

Gary was the kind of person whose acquaintance one might slip up and count twice when reflecting on life's blessings. And, when such a person passes on, his friends are sorely pressed to remember the blessing and avoid self-pity over the loss.

Gary caught a lot of fish in Montana waters – and he reeled in a lot of fish (and sharks) over Montana chessboards. His last hurrah was an April, 2001 draw with Montana co-champion, Jan Johansson in the Crocus Open. It was a gritty effort coming just a month before the conclusion of



the longer, grittier, battle with cancer. Montanans also knew Gary as promoter extraordinaire. He would show up at our far-flung tourneys with a carload of Spokane rating-raiders in tow, boosting attendance and buoying the spirit of many a tournament director. On occasion, a Missoula crosstable would actually read more like a Spokane club tournament.

It was Younker's enthusiasm and dedication that made Spokane's Dave Collyer Memorial Open not only successful, but unique in that it was getting bigger and better every year. A very pleasant anomaly on the American chess scene to paraphrase IM John Donaldson's comments on the Collyer earlier this year.

The Younker family generously "transposed" their home to the "Younkair Motel" on chess weekends, hosting woodpushers from all points of the compass.

For some of us, the festive Saturday night "Younkair" min-tourneys often brought more joy than the daytime rated sessions.

Thank you, Linda, Jeremy, and Katie.

In this "Valentine Raid," Gary nets a big shark with a favored Younker defensive scheme – the Procrastination Stonewall.

Matt Guthrie 2184 Gary  
Younkers 1593  
Valentine Open February 13,  
1993 Rd. 1 Queen's Gambit  
Dutch Defense

1.d4 d5 2.c4 e6 3.Nc3 c6  
4.e3 Bd6 5.Nf3 f5 6.Qc2 Nf6 7.  
h3 0-0 8.g4 Ne4 9.gxf5 Nxc3 10.  
bxc3 Rxf5 11.Bg2 Qf6 12.Qe2  
c5 13.Bb2 Nc6 14.cxd5 exd5  
15.c4 cxd4 16.Nxd4 Nxd4 17.  
Bxd4 Be5 18.Bxd5+ Kh8 19.  
Rb1 Bxd4 20.exd4 Bd7 21.Kf1  
Re8 22.Qd2 Bc6 23.Bg2?  
Bxg2+ 24.Kxg2 Rf8 (Fritz says  
black should consider Rg5+,  
which requires White to play  
Qxg5 in order to fight off mate.)  
25.Rb2 Qc6+ 26.d5 Qxc4 27.  
Rc1 Qe4+ 28.Kg1 Rxd5 29.Qe3  
Qg6+ 30.Kf1 Rg5 31.Rbc2  
Rg1+ 32.Ke2 Qh5+ 33.Kd2  
Qa5+ 34.Ke2 Qb5+ 35.Kd2  
Rd8+ 36.Kc3 Rg6 White  
resigns, Fritz says mate in 4. 0-  
1

Thank you Gary!





# 9-Inch Knights Stand Tall

By Greg Nowak

On May 5, four teams vied for the 7<sup>th</sup> Northwest Team title. It was again played in the fine site of the Double Front Chicken banquet room. The space, the quiet, and lighting were all good and the food was great! The event was unrated G/30 chess fun. After 6 previous tries, Dan McCourt's team, 9-Inch Knights, fought valiantly to capture 1<sup>st</sup>. Congratulations!

My team, the Dandy Dinkers, tried our best to be spoilers. We met the 9-Inchers in the last round, but could only tie them. We needed 3 1/2 game points to give us the match win and enough game points to tie for 1<sup>st</sup> with 4 Charging Knights.

The final tally:

1. 9-Inch Knights - 2 1/2
2. 4 Charging Knights - 2
3. Dandy Dinkers - 1 1/2
4. Robust Rooks - 0

Board winners were:

- Board 1. Greg Nowak - 2 1/2  
Dandy Dinkers
- Board 2. Hans Andersen - 3 4  
Charging Knights
- Board 3. Eric Gilbertsen - 3  
Dandy Dinkers
- Board 4. Scott Young -- 3 9-  
Inch Knights

This event was 7 year-old Isaac Venezia's first chess event! He'd been whipping up the competition up in Troy, MT, including the adults. He scored two wins! It was here his Mom

learned of the Youth Championships on May 19 in Helena, which I expect she took him to. My events have introduced several promising youth from surrounding communities to competitive chess. May have joined USCF and MCA. Despite struggling to stay in operation, this makes it feel my efforts have been worthwhile

Dan McCourt had the most notable upset, a win over expert Loren Meierding. Roger White gave me a good scare after I took one free

Montana Chess News is published by the Montana Chess Association, an affiliate of the U. S. Chess Federation.  
**Editor -**  
**David Duke,**  
**P.O. Box 3052**  
**Billings, MT 59103**  
**(406) 254-8474, (406) 254.2121**  
**E-mail: dalduke@juno.com**  
 All submissions are welcome, including photos. Articles by E-mail or on a PC-formatted diskette are especially appreciated.

**Publishing Schedule:**  
 Issue 1 - Mar. 1, Issue 2 (Special for the Open) - May 10, Issue 3 - (today :), Issue 4 - October 15, Issue 5 - Dec. 15.  
 Deadline for most submissions is ten days before the publication date.

7th Northwest Team Title						
#	Team	1	2	3	4	Points
1	<b>Dandy Dinkers</b>					
	Greg Nowak	X	1	1/2	1	2 1/2
	Paul Mitchell	X	0	0	1	1
	Eric Gilbertsen	X	1	1	1	3
2	<b>Nine-Inch Knights</b>					
	Dan McCourt	0	X	1	1	2
	Mike Stubblefield	1	X	0	1	2
	Jim Stubblefield	0	X	1/2	1	1 1/2
3	<b>Four Charging Knights</b>					
	Loran Meierding	1/2	0	X	1	1 1/2
	Hans Andersen	1	1	X	1	3
	Ken Schultz	0	1/2	X	1	1 1/2
4	<b>Robust Rooks</b>					
	Roger White	0	0	0	X	0
	Don Robinson	0	0	0	X	0
	Pat Todd	0	0	0	X	0
	Woody Crobar	1	0	0	X	1

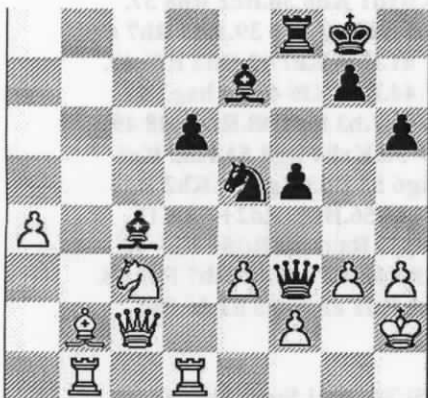
\*\*\*\*\*  
 ★ Note from the Editor ★  
 ★ Dear Chess Friends, ★  
 ★ I want to thank the Board and the membership for their ★  
 ★ support and patience while I was getting this first newsletter out. I ran ★  
 ★ into various difficulties. Part of the difficulties is Thad Suits, Michael ★  
 ★ Martinez and Les Brennan set such a high standard for newsletters. If ★  
 ★ only they would have done a poorer job, this job would be easier :-). ★  
 ★ I can see another hard part of the job is selecting which games ★  
 ★ to print. I will spread out the wins, losses, and names as fair as I can. ★  
 ★ I would like to print the next on October 15, 2001, so submissions ★  
 ★ should be in as soon as practical. Yours in chess, David ★  
 ★ \*\*\*\*\*

# Recent Games

At the 2001 Montana State Open, **Michael Runge**, of Billings played some of the best players to take a clear first place. Here are two of his games.

Michael Runge(1808) - Jan Johansson (2016) [A21]

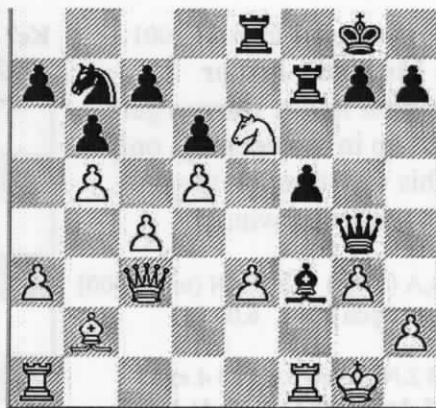
1.c4 d6 2.Nc3 e5 3.d3 f5 4.g3 Nf6 5. Bg2 Be7 6.Nf3 0-0 7.0-0 c6 8.e3 h6 9. b4 a6 10.a4 Be6 11.Rb1 Nbd7 12.Qe2 Qe8 13.Bb2 Qf7 14.b5 e4 15.Nd2 exd3 16.Qxd3 Ne5 17.Qc2 Nxc4 18.bxc6 bxc6 19.Bxc6 Rac8 20.Bb7 (White has the advantage - Fritz) 20...Rc7 21. Bxa6 Ng4 22.Nxc4 Rxc4?! 23.h3 Ne5 24.Bxc4 Bxc4 25.Rfd1 Qh5 26.Kg2 Qf3+ 27.Kh2



Qh5 (Fritz suggests either 27...Bd3, or 27...Qc6 with the threat of 28...Nf3+) 28.Rh1 f4 29.exf4 Bd3 30.Qd1 Nf3+ 31.Kg2 Nh4+ 32.gxh4 Qg6+ 33. Qg4 Be4+ 34.Nxe4 Qxe4+ 35.f3 Qe2+ 36.Kg3 g5 37.Rhe1 Rxf4 38.Qc8+ Rf8 39.Qxf8+ Kxf8 40.Rxe2 gxh4+ 41.Kg4 Black Resigns 1-0

Michael Runge(1808) - Paul Motta (1906) [A21]

1.c4 e5 2.Nc3 Bb4 3.Qb3 Nc6 4.Nf3 Bxc3 5.Qxc3 d6 6.d3 b6 7.g3 Nge7 8. Bg2 Rb8 9.0-0 0-0 10.a3 f6 11.e3 Qe8 12.b4 Qh5 13.Re1 Bh3 14.Bh1 f5 15. Bb2 Rf7 16.d4 e4 17.Nd2 Rbf8 18.b5 Nd8 19.d5 Ng6 20.f4 exf3 21.Nxf3 Bg4 22.Rf1 Nb7 23.Nd4 Ne5 24.Ne6 Re8 25.Qc2 Nf3+ 26.Bxf3 Bxf3 27.Qc3 Qg4



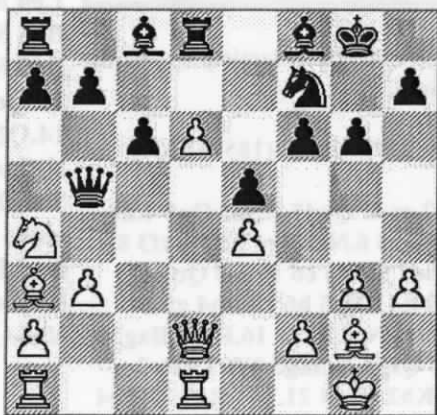
28.Rf2?! White wins a pawn after 28. Nxc7 Rxc7 29. Rxf3 because Black's Q can not defend both the Bf3 and Rg7. 28...Be4 29.Raf1 Nd8 30.Rf4 Qg6 31. Nd4 Ref8 32.Rh4 h5 33.Rff4 Qh6 34. Rf2 g5 35.Rh3 f4 36.exf4 gxf4 37.Rxf4 Rxf4 38.gxf4 Qxf4?! 39.Rg3+ Kh7 40. Rg7+ Kh6 41.Nf5+ Qxf5 42.Be1+ Black has to give up his Q to fight off mate. Black Resigns. 1-0

## Mike Stubblefield from

Missoula had an impressive tournament with 3 points. Mike had draws against strong players, such as Jim Skovron and, as in the next game, Michael Long.

Mike Stubblefield (1512) - Michael Long (1801)

1.g3 d5 2.Bg2 Nf6 3.c4 g6 4.cxd5 Nxd5 5.e4 Nf6?! (5...Nb4 and if 6.d4 then 6...Qxd4. 7. Qxd4 Nc2+) 6.Nc3 c6 7.Nge2 Bg7 8.d4 e6 9.Bd2 0-0 10. Qe1 Na6 11.Bg5 Qb6 12.0-0 Re8 13. Be3 Ng4 14.Bd2 e5 15.d5 Nb4 16.Na4 Qb5 17.Nec3 Qc4 18.b3 Qd4 19.Ne2 Qd3 20.Bxb4 Qxe2 21.d6 (White wins a pawn with dxc6) 21...Qb5 22.Ba3 Bf8 23.Qg5 f6 24.Qd2 Rd8 25.h3 Nh6 26. Rfd1 Nf7?

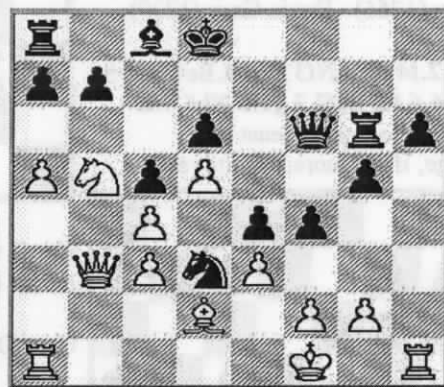


27.Bf1 (White finds the right move at the right time) 27...Bxd6 28.Bxb5 Bxa3 29.Qe2?! Fritz says 29.Qxd8+ Nxd8 30.Rxd8+ leaves White up a rook 29... Rxd1+ 30.Rxd1 cxb5 31.Qxb5 b6 32. b4?! (32. Qc6 stops the show) 32... Bxb3 33.Qc4 Rc8 34.Qb3 Bc1 35.Nc3 Bh6 36.Nd5 Kg7 37.f4 Bg4 38.Rd2 Rd8 39.Rc2? Rd7? (... Bd1 pins White's R) 40.Ne3 Bf3 41.Qa4 (White should consider 41. Nf5+ and then Qxbf3) 41...Re7 42.Nd5 Re6 43.Qxa7 Re8 44.Rc7 Rf8 45.Nc3 exf4 46.gxf4 Bxf4 47.Qxb6 Kh6 (Time pressure sets in) 48.Qxf6 Be3+ 49.Kh2 Bd4 50.Qxf3 Be5+ 51.Kg2 Bxc7 End of scoresheets, the game ended as a draw. 1/2 - 1/2

The next game from the State Open, involving current Montana State Champion **Alex Dawson**, is noteworthy for its potential tactics.

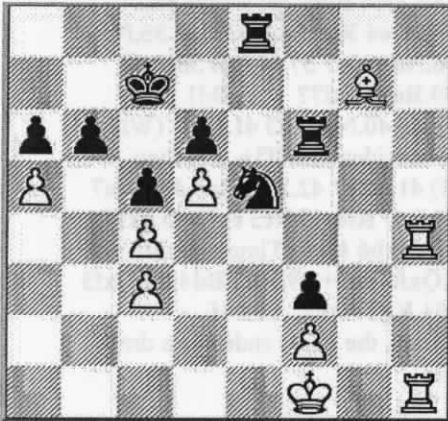
David Duke (1861) - Alex Dawson (2043) [A21]

1.c4 e5 2.Nc3 d6 3.Nf3 f5 4.d4 e4 5.Ng5 Be7 6.h4 e6 7.d5 h6 8.Nh3 Bxh4 9.Nf4 Bf6 10.e3 Bxc3+ (This good move doubles White's pawns and makes the dark squared bishop search for a role in the game.) 11.bxc3 Nf6 12. Ng6 Rg8 13.Be2 c5 14.Bh5 Kd7 15. Nf4 Nxe5 16.Qxh5 Qf6 17.Bd2 Kc7 18.a4 g5 19.Ne2 Rg6 20.a5 Nd7 21. Nd4?! (Trying to free the B for action on the Q side) 21...Ne5 22.Nb5+ Kd8 23.Qd1 f4 24.Qb3 Nd3+ 25.Kf1



25...a6 Fritz says 25...Nxf2!, 26. Kxf2, fxe3+ and now, if 27. Kxe3 then Black mates in 5. (27...Qf4+ 28. Ke2, Bg4+ 29. Ke1, e3 30. Bxe3, Qxe3+ 31. Kf1, Rf6#) 26.Na7 Qf7 27. Rb1 Rf6

28.Qb6+ Qc7 29.Nxc8 Kxc8 30.exf4 gxf4 31.Qxc7+ Kxc7 32.Ke2 Ne5 33. Rh4 Raf8 34.Rbh1 f3+ 35.gxf3 exf3+ 36.Kf1 b6 37.Bxh6 Re8 38.Bg7 Black to move - Mate in 6

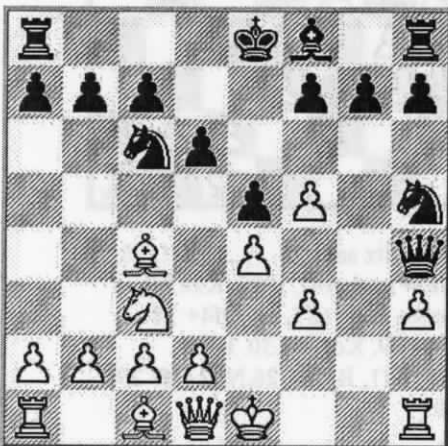


(38. . . Nd3 39. Kg1, Rg6+ 40. Rg4, Rxc4+ 41. Kh2, Rxc7 42. axb6+, Kb8 43. Rg1, Rh8#). Time is short, Black is in command and plays: 38...Rf7 39. Bxe5 Rxe5 40.Rh7 Rxh7 41.Rxh7+ The scoresheets end, Black wins. 0-1

Devin Grey pulls off the biggest upset of the State Open and perhaps the year with the following miniature. Devin has been playing well recently. Devin won several games in the Astronomy Open in Bozeman (April 2001), including victories over Brian Bailey (1599) and Sherwood Moore (1657).

Jim Loy (1765) - Devin Gray (1239) [C30]

1.e4 e5 2.f4 d6 3.Nf3 Bg4 4.Bc4 Nf6 5. Nc3 Nc6 6.h3 Bxf3 7.gxf3 Nh5 8.f5 Qh4+ White loses at least the exchange, if not more. White resigns.

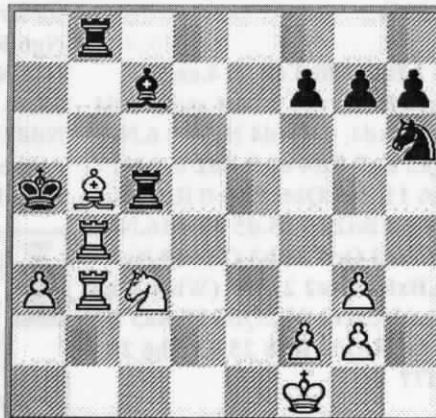


In this next game from the 2001 Open, **Montana Junior Champion Aldin Barnes** get twisted up in the opening, only to fight his way through the mid game to a strong win.

Barnes,A (1280) - Cohea,N (unr) [B00] Mt. State Open 2001, 6.03.01

1.e4 e5 2.Nf3 Nc6 3.d4 d5 4.exd5 Qxd5 5.dxe5 Qxd1+ 6.Kxd1 Bg4 7. Nbd2 Nxe5 8.Be2 Bxf3 9.Nxf3 0-0-0+ 10.Ke1 Re8 11.Kf1 Be5 12.Bf4 Ng4 13.Bg3 Ne7 14.Ng5 Nh6 15.Nf3 Nef5 16.Ng1 Nxc3+ 17.hxc3 Re7 18.Rh5 Bb6 19.Rd5 c6 20.Rd3 Rhe8 21.Rd2 Ba5 22.c3 b5 23.b4 Bb6 24.Rc1 a5 25. a3 Kb7 26.Bf3 Rc8 27.Nh3 Fritz says its time to play c4 due to the pin of Black's c pawn against the king. 27... Ka6 28.Ng5 c5 29.Ra2 Rd8 30.Ne4 cxb4 31.cxb4 Red7 32.bxa5 Kxa5 33. Rb2 Rd3 34.Rc3 Ka4 35.Rb4+ Fritz sees Rxb5 followed by the pin Be2 which wins back a R. 35...Ka5 36.Be2 R3d5 37.Rcb3 Be7 38.Nc3 Re5 39. Bxb5 Rb8 Black resigns. 1-0 (White mates in 3)

In the State Open. **Jim Skovron**

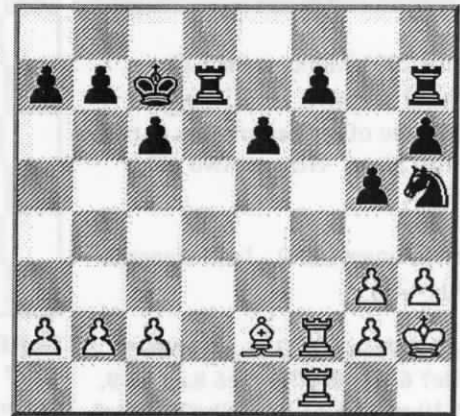


shows the value of dyanmic play against Devin Gray.

Gray,D (1239) - Jim,S (1857) [B01]

1.e4 d5 2.exd5 Qxd5 3.Nc3 Qa5 4.d4 Nf6 5.Bd2 c6 6.Nf3 Bg4 7.h3 Bxf3 8. Qxf3 Nbd7 9.Bd3 e6 10.0-0 Qc7 11. Rfe1 0-0-0 12.Bg5 h6 13.Bh4 g5 14. Bg3 Bd6 15.Ne4 Nxe4 16.Rxe4 Bxg3 17.Qxg3 Qxg3 18.fxg3 Nf6 19.Re2 Nh5 20.Kh2 Rxd4 21.Rf1 Rd7 22.Bc4

Kc7 23.Ref2 Rh7 24.Be2 Nxc3?! (Fritz did not like this move. I



like this move. Sometimes a position requires dynamic play. Black has 2 pawns for a N, plus the initiative - Ed.) 25.Kxc3 f5 26.Bd3 h5 27.Re2 h4+ 28. Kf2 Rd6 29.Rfe1 Rh6 30.Bc4 Kd7 31. Re3 b5 32.Bb3 c5 33.c4 b4 34.Rd1 Rxd1 35.Bxd1 Kd6 36.Bc2 Rh8 37. Rd3+ Ke7 38.Re3 Kf6 39.Rd3 Rh7 40. Ke3 Rc7 41.Rd6 Ke7 42.Rd2 Kf6 43. Kf3 Ke7 44.Re2 Kf6 45.g4 hxc3 46. Kxc3 Rd7 47.b3 Rd4 48.Rf2 Rd8 49. h4 gxh4+ 50.Kxh4 Rg8 51.Kh3 Ke5 52.Rf3 Rg6 53.Bd3 Rg1 54.Kh2 Rd1 55.Kg2 Kd4 56.Bxf5 Rd2+ 57.Kf1 exf5 58.Rxf5 Rxa2 59.Rd5+ Kc3 60. Rxc5 Kxb3 61.Rc7 a5 62.Rb7 Rc2 63. Ke1 a4 64.Kd1 a3 65.c5 a2 66.Ra7 Rxc5 1-0

On April 28, 2001 Steve Scarff directed the Astronomy Day Open, in Bozeman Montana. **Jan Johansson** placed first.

Johansson,J (2036) - Long,M (1784) [ Astronomy Day Open, 4.28.2001

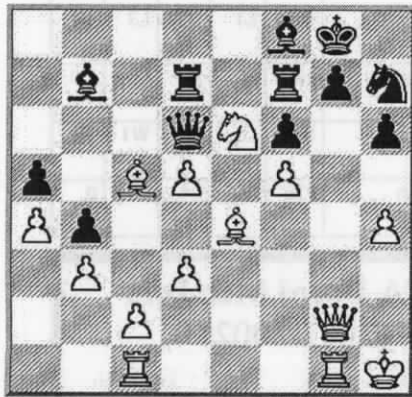
1.e4 d6 2.Nc3 e5 3.f4 Nc6 4.Nf3 Bg4 5.Bb5 a6 6.Bxc6+ bxc6 7.h3 Bd7 8.0-0 g6 9.d3 Bg7 10.Bd2 Nf6 11.Qe1 0-0 12.Qh4 Nh5 13.g4 Bf6 14.Qf2 Ng7? [14. . . Bxc3 15.bxc3 Ng7 with White slightly better - Scarff] 15.e5 White finds the right move to win a piece. 15...dxe5 16. fxe5 Bxe5 17.Nxe5 Ne6 18.Bh6 Fritz says 18. Nxf7 followed by 19. Nh6+. **Black resigns. 0-1.**



In the Astronomy Open, **Steve Scarff** played Jan Johannson to a draw. Steve's 33rd move is a beautiful, unexpected shot which completely changes the game.

Johannson,J (2036) - Scarff,S (1626)  
Astronomy Day Open, 4.28.2001

1.e4 e6 2.d3 c5 3.g3 Nc6 4.Bg2 b5 5.a4 b4 6.Ne2 a5 7.0-0 Be7 8.f4 d6 9.b3 Qb6 10.Be3 Bb7 11.Nd2 Nf6 12.h3 0-0 13.Qe1 Nd4 14.Rc1 Rac8 15.g4 h6 16.Qf2 Nxe2+ 17.Qxe2 Nh7 18.Kh1 Rfd8 19.Nf3 f6 20.f5 exf5 21.gxf5 Bf8 22.Nh4 Rc7 23.Rg1 Kh8 24.Ng6+ Kg8 25.Nf4 Rf7 26.h4 d5 27.exd5 Qd6 28.Be4 Rdd7 29.Qg2 Qc7 30.Ne6 Qd6 31.Bxc5 Qe5 32.Bd4 Qd6 33.Bc5

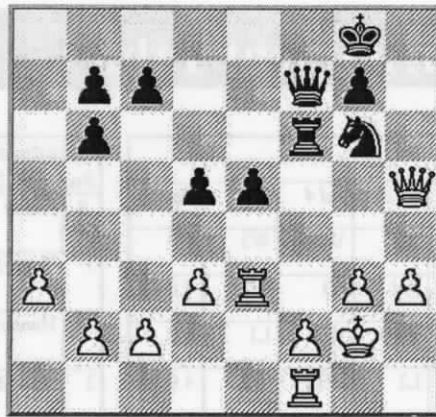


**Qxd5!** Deserves an (!) for ingenuity. White's attack was building. This move brings about a reduction of forces, which leads to a draw. 34.Bxf8 Nxf8 35.Nxf8 Kxf8 36.Bxd5 Bxd5 37.Qxd5 Rxd5 38.Rc1 Rc7 39.Rg2  
Scoresheets end - draw agreed in later position. ½-½

Missoula has always been one of the most active chess cities in Montana. The following are several games from recent tournaments.

Jensen,M - Moore,S [C26]  
UCCC 2nd Spring (3), 5.17.2001

1.e4 e5 2.Bc4 Nf6 3.d3 Bc5 4.Nc3 d6 5.Na4 Bb6 6.Nxb6 axb6 7.h3 Nc6 8.a3 Be6 9.Bxe6 fxe6 10.Nf3 0-0 11.Bg5 Qd7 12.0-0 Nd4 13.Re1 Nxf3+ 14.Qxf3 h6 15.Bd2 Nd5 16.Qg4 Nf4 17.g3 h5 18.Qh4 Ng6 19.Qxh5 Rf6? 20.Bg5 Raf8 21.Bxf6 Rxf6 22.Re3 Qf7 23.Rf1 d5 24.exd5 exd5 25.Kg2?



25... Nf4+ ! White loses his Q and therefore resigns. 0-1

These next two games are between Roger White and Bill McBroom. The games were played a month apart, with the same opening, same colors but with different results.

White,R (1650) - McBroom,W (1500)  
[B18]  
3rd Spring Open, 6.14.2001

1.e4 e6 2.Nc3 d5 3.d4 dxe4 4.Nxe4 Bf5 5.Ng3 Bg6 6.Nf3 Nd7 7.c3 Ngf6 8.Bd3 Bxd3 9.Qxd3 e6 10.Bf4 Be7 11.0-0 0-0 12.Rfe1 Nd5 13.Be3 Nxe3 14.Qxe3 Nf6 15.h3 Nd5 16.Qd2 Qc7 17.Ne5 Rad8 18.Nd3 Bd6 19.Nf1 Bf4 20.Nxf4 Nxf4 21.Re3 c5 22.Rf3?! Ng6 (Fritz says 22... e5) 23.Rc1 cxd4 24.cxd4 Qb6 25.Rb3 Qa6 26.Ra3 Qb6 27.Rc4 Ne5 28.Rb4 Qc7 29.Rxa7 Nc6 30.Raxb7 Qd6 31.R4b6 Rb8 32.Rxb8 Rxb8 33.Rxb8+ Nxb8 34.Qc3 Nc6 35.Qc5 Qd7 36.Qb6 h6 37.a4 Nxd4 38.a5 Ne2+ 39.Kh1 Nf4? (39... Qd1 gives Black a chance) 40.Qb8+ (Fork). 1-0

White,R (1667) - McBroom,W (1500)  
UCCC First Summer, 7.05.01

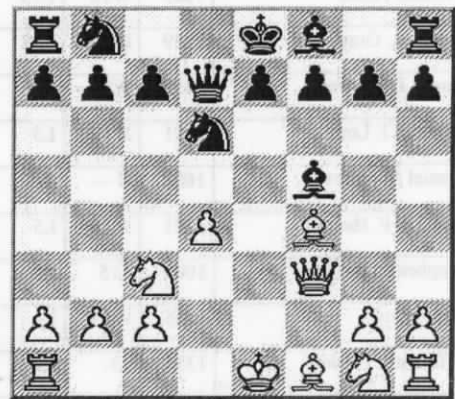
1.e4 c6 2.d4 d5 3.Nc3 dxe4 4.Nxe4 Bf5 5.Ng3 Bg6 6.Nf3 Nd7 7.c3 e6 8.a4 h6 9.Bc4 Ngf6 10.h3 Bd6 11.0-0 0-0 12.Re1 Qc7 13.Nf1 Rad8 14.Bd3 Bxd3 15.Qxd3 Nd5 16.g3 N7f6 17.c4 Nb4 18.Qc3 Na6 19.c5 Be7 20.Bf4 Qc8 21.b4 Nd5 22.Qd2 Nxf4 23.gxf4 b6 24.b5 Nxc5! 25.bxc6? Nb3 26.Qc3 Nxa1 27.Rxa1 Bd6 28.Ne5 Be7 29.Ng3 Rd5 30.Nh5 Qe8? 31.Rc1? (Fritz says 31. Qg3 with threats against g7) 31...f6 32.Nxg7

Kxg7 33.Qg3+ Kh7 34.Nd7 Rxd7 35.Qd3+ f5 36.cxd7 Qxd7 37.Qe3 Rg8+ 38.Kf1 Qd6 39.Qe5 Rg7 40.Rxc7 Qxc7 41.Qxc7 White resigns. 0-1

Here's a State Open game between **Paul Motta** and **Howard Hoene**. Paul plays the Blackmar/ Deimer Gambit. Howard exchanges a piece for two pawns but does not have enough compensation.

Motta,P (1906) - Hoene,H (1701)  
Mt. State Open, 06.02.2001

1.d4 d5 2.Nc3 Nf6 3.e4 dxe4 4.f3 Bf5 5.fxe4 Nxe4 6.Qf3 Nd6 7.Bf4 Qd7?!  
Either 7... Nc6 or 7... e6 is better.



8.Bxd6 Nc6 9.Bb5 Bg4 10.Qe4 Bf5 11.Qe3 a6 12.Bxc6 Qxc6 13.Bf4 Qxg2 14.Qf3 Qxf3 15.Nxf3 0-0-0 16.0-0-0 e6 17.Ne5 Bg6 18.Nxg6 hxg6 19.Rhf1 f6 20.Ne2 g5 21.Bg3 c6 22.Rfe1 f5 23.Be5 Rh7 24.Rg1 Be7 25.Rg2 Bf6 26.Ng1 Rh4 27.Nf3 Rh5 28.c3 g4 29.Ng1 Rd7 30.Ne2 Rf7 31.Nf4 Bg5 32.Kc2 Bxf4 33.Bxf4 g5 34.Be5 f4 35.Rxg4 Rxh2+ 36.Rd2 Rh5 37.Rf2 Kd7 38.Kd2 Ke7 39.Ke2 From here it is difficult to read the scoresheets. White goes on to win. 1-0

From the Astronomy Open—the fabled Fried Liver Attack.

Sherwood Moore (1657) - Stephen Rasmussen, (1005) FRIED LIVER ATTACK, Astronomy Open 4.28.01

1.e4 e5 2.Nf3 Nc6 3.Be4 Nf6 4.Ng5 d5 5.exd5 Nxd5 6.Nxf7!? Kxf7 7.Qf3+ Ke8? 8.Bxd5 Bd7?? 9.Qf7# 1-0

# Tournament Tables

## 66th Montana State Open (6/2,2/01)

#	Name	Rtng	Rd 1	Rd 2	Rd 3	Rd 4	Rd 5	Tot
1	Michael Runge	1808	W24	W21	W5	W10	W3	5.0
2	Alex Dawson	2043	W6	W15	W4	L3	W7	4.0
3	Jan Johansson	2016	W16	W11	W10	W2	L1	4.0
4	David Duke	1861	W17	W7	L2	W12	W5	4.0
5	Paul S. Motta	1906	W20	W13	L1	W8	L4	3.0
6	Michael Stubblefield	1512	L2	W14	D11	W20	D10	3.0
7	Dennis Petrak	1676	W22	L4	W19	W13	L2	3.0
8	Thomas Hesse	1689	W18	L10	W20	L5	W16	3.0
9	Devin A. Gray	1239	L10	L12	W22	W19	W15	3.0
10	James J. Skovron	1857	W9	W8	L3	L1	D6	2.5
11	Michael J. Long	1801	W19	L3	D6	L15	W17	2.5
12	Daniel McCourt	1602	U—	W9	W15	L4	D13	2.5
13	Howard F. Hoene	1701	W23	L5	W21	L7	D12	2.5
14	Stephen Rasmussen	1005	L15	L6	D18	W22	W19	2.5
15	James Loy	1765	W14	L2	L12	W11	L9	2.0
16	William J. Furdell	1334	L3	L19	W17	W21	L8	2.0
17	Aldin M. Barnes	1285	L4	D22	L16	W18	L11	1.5
18	Nick Cohea	UR	L8	L20	D14	L17	W22	1.5
19	Mike Shuyler	1147	L11	W16	L7	L9	L14	1.0
20	Curtis Preston	1321	L5	W18	L8	L6	U—	1.0
21	Robert T. Petersen	472	B—	L1	L13	L16	U—	1.0
22	Tucker Hayes	UR	L7	D17	L9	L14	L18	0.5
23	Scott K. Young	1211	LF	U	U	U	U	0.0
24	Steven D. Young	711	LF	U	U	U	U	0.0

## Clandestine Chess Club - G 20 Championship June 25, 2001

#	Name	Rtng	Rd 1	Rd 2	Rd 3	Tot
1	Tom Hesse	1689	W7	W4	W2	3.0
2	Hans Anderson	1686	W8	W3	L1	2.0
3	Dan McCourt	1617	W6	L2	W7	2.0
4	Mike Stubblefield	1550	W10	L1	W8	2.0
5	Eric Gulbertsen	1540	W9	L7	D6	1.5
6	Val King	Unr	L3	W10	D5	1.5
7	Paul Mitchell	1434	L1	W5	L3	1.0
8	Mike Joyce	1369	L2	W9	L4	1.0
9	Ben Andersen	Unr	L5	L8	W10	1.0
10	Andy Shipp	970	L4	L6	L9	0

## 2001 First Summer Open (UCCC Missoula)

#	Name	Rtng	Rd 1	Rd 2	Rd 3	Tot
1	J. Michael Jensen	1864	W5	U	W3	2.0
2	Daniel McCourt	1602	D3	L4	W5	1.5
3	William McBroom	1500	D2	W5	L1	1.5
4	Rudolf Katzl	1900	U	W2	U	1.0
5	Roger White	1678	L1	L3	L2	0

### MCA Board Members (2001-2002)

Jan Johansson - President  
333.4901  
rayanjan@mcn.net

Sherwood Moore - V.P.  
728.1695  
smoore1721@aol.com

Paul Motta - Sec./ Tres.  
P.O. Box 7891  
Missoula, MT 59807  
webmaser@montanachess.com

Dan McCourt - Western V.P.  
721.0254  
dmcc@micro-mania.net

Mel Drake - Eastern V.P.  
475.3481

Let them know your ideas.



# Upcoming Events

## September 15-16, 2001; The Montana State Closed Championship

**Format:** Six player round robin. **Time Controls:** 30/90, G/60. **Site:** Student Union Bldg., Room 276, on the M.S.U. campus in Bozeman. **E.F.:** Free to qualifiers. **Prizes:** Trophy, Championship title and \$100 to winner. **Rounds:** Sat: 9,2,7 ; Sun. 9,2. **Reg:** 8:15 - 8:45. **Contact:** Sherwood Moore, 453 Minnesota, Missoula, MT. 59802 Tel: 728.1695 **Other:** Participation is by invitation only.

## September 15-16, 2001; The John Barto Memorial

Held in conjunction with the State Closed

**Format:** Five round swiss. **Time Controls:** G/2. **Site:** Student Union Bldg., Room 276, on the M.S.U. campus in Bozeman. **E.F.:** \$15 if received by 9/13/01, \$20 after that. **Prizes:** Trophies 1st and 2nd. **Rounds:** Sat: 9,2,7 ; Sun. 9,2. **Reg:** 8:15 - 8:45. **Contact:** Sherwood Moore, 453 Minnesota, Missoula, MT. 59802 Tel: 728.1695

## October 6-7, 2001; The Chinook Open with Pepperoni

**Format:** Five round swiss. **Time Controls:** G/2, GP. Free pizza for Saturday lunch break! **Site:** Univ. of Great Falls, Sullivan Hall, Room 203. Enter from 23rd St. parking. **E.F.:** \$20 if received by 10/4/01, \$25 after that, no exceptions. **Prizes:** 1st - \$100; 2nd - \$50, \$25 to top in each division. \$25 biggest upset. **Rounds:** Sat. 10, 2:30, 7; Sun 9, 2. **Reg:** 8:45 - 9:30. **Contact:** Thad Suits, 2015 4th Ave. N., Great Falls, MT 59401. Tel. 453-6160. **Other:** Limited housing available at player homes. Thanks again to the University of Great Falls for the event site.

## November 3-4, 2001; University-Community Chess Club Turkey Open

**Format:** Four round swiss. **Time Controls:** G/2 with sudden death. **Site:** Room 202 Liberal Arts Building, University of Montana, Missoula, MT. **E.F.:** \$15 if received by 11/1/01, (Checks to "UCCC" - \$20 a the door) **Prizes:** 1st - \$75, 2nd = \$50; 1700-1899=\$40, 1500-1699=\$30; LT 1500=\$20; biggest upset=\$15 (based on 20 entries). **Rounds:** Sat. 9:30 am, 2 pm; Sun 9:00 am, 1:30 pm. **Reg:** Sat: 8:30 - 9:00 am. (No phone entries). **Contact:** Sherwood Moore, 453 Minnesota, Missoula, MT 59802. Tel. 728.1695 **Note:** This is a Montana grand prix event (current MCA membership is required of all Montana Players)

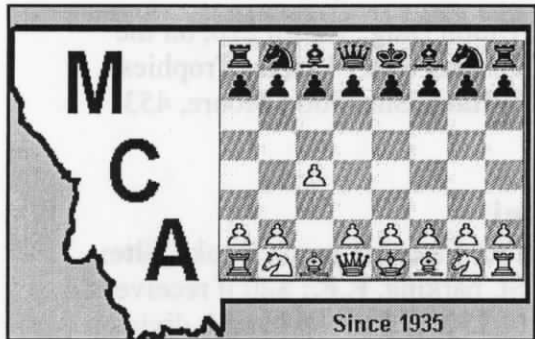
2001 Second Spring Open (UCCC - Missoula)

#	Name	Q-rtnng	1	2	3	Tot
1	Rudolf Katzl	1900	U	U	W5	1
2	Sherwood Moore	1602	U	U	W3	1
3	J. Michael Jensen	1888	U	D5	L2	.5
4	William McBroom	1503	D6	U	U	.5
5	Roger White	1667	U	D3	L1	.5
6	Daniel McCourt	1600	D4	U	U	.5

2001 Third Spring Open (UCCC - Missoula)

#	Name	Q-rtnng	1	2	3	Tot
1	Sherwood Moore	1655	D5	D2	W6	2.0
2	Rudolf Katzl	1900	U	D1	W3	1.5
3	Ron Erickson	1696	W6	U	L2	1.5
4	Roger White	1667	U	U	W5	1.0
5	William McBroom	1503	D1	U	L4	.5
6	Daniel McCourt	1600	L3	U	L1	0

David Duke  
P.O. Box 3052  
Billings, MT. 59103



Volume 26, Issue 3 August 2001



# Upcoming Tournaments!

Lots of opportunity to play!

**Closed and Barto Memorial - Bozeman**

September 15-16, 2001

**Chinook Open- Great Falls**

October 6-7, 2001

**Turkey Open - Missoula**

November 3-4, 2001

