

MONTANA CHESS NEWS

APRIL-MAY, 1990

VOLUME XV-ISSUE 2

PAUL MOTTA ROLLS UP VALENTINE AND CROCUS HONORS

Paul Motta has dominated the 1989-90 Grand Prix Race in a manner that has not been seen since Judson Temple's landslide victory in 1977 (calculated retroactively when the title was "born" in 1978. Paul has finished first or second in every GP event he has played in this year. Paul's total of 68.10 points easily clinches the title, and the Montana Closed Championship Playoff spot, going into the Montana Open. Second place is held by Mike Jensen with 30.28 points. Mike is automatically qualified for the Closed as the reigning State Champion. That leaves the second GP qualifying spot wide open going into the State Open, which means there are really four spots available at this year's Open. The current standings for those near the top are : Thad Suits - 17.28, Dave Shughart - 17.04, Zygmund Mayer - 15.87, Kip Stubberud - 15.04, Kip Limesand - 14.48, Bill Lynch - 13.35, John Thompson - 11.12, Bob Mitchell - 10.10, Chad Robinson - 8.08. If none of these players places, of course, Thad Suits will qualify as the second Grand Prix seed.

LYNCH, MOTTA, THOMPSON & MONEYHUN TOP SUDDEN DEATH

Les Brennan has provided a crosstable and games selection on page 3, from this tournament in which no one escaped unscathed. 1989 upset of the year winner John Kennedy may have a lock on the 1990 title after his victory over Paul Motta in Round 1. Brennan did some damage himself, toppling John Thompson in Round 3. Bill Lynch survived the "little guys" but fell to Thompson in Round 5, while Harold Moneyhun bounced back from a tough loss to Lynch in Round 1 to win four straight and share the top honors.

STEVE SMITH NEARLY PERFECT IN MARATHON INVITATIONAL

Sixteen hardy players (foolhardy?) congregated in Billings to contest a 15 round, round-robin tournament at sudden death speed. Steve Smith emerged victorious in the invitation-al event put together by Les Brennan. Steve relinquished only one half point - to Chad Robinson of Billings, in an event which was relatively free of rating upsets. Steve has furnished full annotations of several of his games for this issue (see pages 6-7).

WYOMING / MONTANA MATCH PROPOSED

Bill McBroom started the ball rolling on serious discussion of an interstate match several months ago. The result has been a wide variety of ideas on possible tournament formats. The major ideas are presented on page 5. All players planning to attend the annual meetings of the Wyoming Chess Association and Montana Chess Association (both on the weekend of May 19-20) are encouraged to read the proposals and come prepared to discuss your ideas, as it is hoped and agreement might be reached which would enable a match series to begin this year.

The 1989-1990 Montana Postal Championships have been proceeding well, with an eight man field after the withdrawal of Colstrip's Jim Shroyer. Paul Motta leads with 5 of 6 and 1 game remaining with Bill Lynch who has 2 of 2 so far. 88-89 Champ Les Brennan held Motta to a draw, but ran into trouble early and lost tough games to Lynch and Moore.

VALENTINE OPEN

February 17-18, 1990

P1 Name	Rate	RD1	RD2	RD3	RD4	RD5	TOT
1 Paul Motta	2041	W8	W6	W7	W3	D2	4.5
2 Dave Shughart	1846	D13	W11	W5	W7	D1	4.0
3 Bill McBroom	1709	W19	W5	W9	L1	D4	3.5
4 Nick Pazderic	1695	W18	L7	W12	W8	D3	3.5
5 Ron Matous	1864	W12	L3	L2	W15	W10	3.0
6 Les Brennan	1725	W14	L1	L8	W17	W11	3.0
7 Ron Erickson	1753	W10	W4	L1	L2	D8	2.5
8 Kip Limesand	1691	L1	W17	W6	L4	D7	2.5
9 Dan McCourt	1831	D17	D13	L3	D16	W15	2.5
10 John Kennedy	1394	L7	D18	W14	W11	L5	2.5
11 Arman Goplen	1691	W15	L2	W13	L10	L6	2.0
12 Gregg Ford	1633	L5	W19	L4	L13	W18	2.0
13 Ray Jorgenson	1535	D2	D9	L11	W12	WD	2.0
14 Don Price	1370	L6	L15	L10	W18	W17	2.0
15 Hardy Grover	UNR	L11	W14	D17	L5	L9	1.5
16 Sherwood Moore	1489	--	--	W18	D9	WD	1.5
17 Lyle Petersen	1396	D9	L8	D15	L6	L14	1.0
18 Rich Sorenson	930	L4	D10	L16	L14	L12	0.5
19 Carl Jacobs	1152	L3	L12	WD	WD	WD	0

RD2 BD1 Brennan-Motta NIMZOVITCH DE-FENSE 1 e4 Nc6 2 d4 d5 3 Nc3 Nf6 4 e5 Nd7 5 f4 Nb6 6 Bb5 Bd7 7 Na4 Nxe5 8 fxe5 Bxb5 9 Nxb6 axb6 10 Ne2 e6 11 0-0 Be7 12 Rf3 Bf8 13 Rg3 g6 14 Bg5 B e7 15 Nc3 Bxg5 16 Nxb5 Be7 17 Kh1 c6 18 Nc3 b5 19 Ne2 Kd7 20 Qf1 Rf8 21 R f3 f6 22 exf6 Bxf6 23 c3 Bg7 24 Nf4 e5 25 dxe5 Bxe5 26 Nd3 Bd6 27 Rf7+ Rx f7 28 Qxf7+ Qe7 29 Qxe7+ Kxe7 30 Re1+ Kd7 31 Nf2 Rf8 32 Nd3 h6 33 Kg1 g5 34 Ne5+ Bxe5 35 Rxe5 Kd6 36 Re3 b6 37 R h3 38 g4 Kc5 39 b3 b4 40 Re3 bxc3 41 Rxc3+ Kb4 42 Rd3 Rf4 43 h3 d4 44 Kg2 b5 45 Kg3 c5 46 Kg2 Re4 47 Kf2 Re3 48 Rxe3 dxe3 49 Kxe3 Ka3 50 Kd3 Kxa2 51 Kc3 b4+ 52 Kc2 Ka3 53 Kc1 Kxb3 54 White Resigns. 0-1

RD2 BD3 PIRC Pazderic-Erickson 1 e4 d6 2 d4 Nf6 3 Nc3 g6 4 Nf3 Bg7 5 h3 0-0 6 Be3 b6 7 Be2 Bb7 8 Nd2 e5 9 d5 Ba6 10 Nb3 Bxe2 11 Qxe2 a6 12 a4 Nbd7 13 Nd2 Nh5 14 g4 Nf4 15 Qc4 Ng2+ 16 Ke2 Nxe3 17 fxe3 Bh6 18 h4 Bg7 19 Rf1 Nf6 20 g5 Nh5 21 Rhg1 Qd7 22 Kd3 f6 23 Qc6 Qxc6 24 dxc6 fxc5 25 hxg5 Rf7 26 Rxf7 Kxf7 27 Rf1+ Ke6 28 Nd5 Ra7 29 R g1 Bf8 30 Nf1 Be7 31 Ng3 Ng7 32 Rh1 Bxg5 33 Rxh7 Kf7 34 Rh8 Ne6 35 b3 Kg7 36 Rc8 b5 37 axb5 axb5 38 b4 Bh4 39 Ne2 Bc1 40 Rb8 Ra3+ 41 c3 Ra2+ 42 Rxb5+ Rd2 43 Kc4 Rxe2 44 Nxc7 Nxc7 45 Rb7 Rxe3 46 Rxc7+ Kf6 47 b5 Rxc3+ 48 Kd5 Rd3+ 49 Kc4 Rd5 50 Kb3 Rb4+ 51 Kc2 Rxb5 52 Kd1 Ba5 53 Rh7 Rc5 54 White Resigns. 0-1

RD3 BD4 Limesand-Brennan QUEEN PAWN 1 d4 d5 2 Bf4 e6 3 e3 h5 4 h3 a5 5 Bh2 Nc6 6 c3 Bd7 7 Bd3 Nce7 8 Nf3 f6 9 Qc2 Nh6 10 Nbd2 Bc6 11 0-0-0 Qd7 12 e4 dxe4 13 Nxe4 Neg8 14 Nc5 Bxc5 15 Bg6 Nf7 16 dxc5 Qe7 17 Rhe1 Bd7 18 Bxc7 QXc5 19 Bxf7+ Kxf7 20 Rxd7+ Ke8 21 Rg7 Ne7 22 Rxe6 Qxc7 23 Qg6+ Kd8 24 Qxf6+ Re8 25 Rd6+ Kc8 26 Qe6+ Kb8 27 Ne5 a6 28 Rd7 Qc8 29 Rxe7 Rf8 30 Rxb7+ Qxb7 31 Rxb7+ Kxb7 32 Qc6+ Ka7 33 Qc7++ 1-0

RD3 BD2 Shughart-Matous QUEEN'S INDIAN 1 d4 Nf6 2 c4 e6 3 N c3 Bb4 4 Bd2 b6 5 e3 Bb7 6 Nf3 0-0 7 Rc1 c5 8 Bd3 cxd4 9 exd4 d5 10 cxd5 Bxc3 11 Bxc3 Nx d5 12 0-0 Nd7 13 Bb1 N7f6 14 Bd2 Qd6 15 Qe2 NF4 16 Qe5 Qxe5 17 dxe5 Ne2+ 18 Kh1 Nd4 19 R c4 Ba6 20 Rh4 h6 21 Re1 Rac8 22 g4 Nef4 23 g5 Ng6 24 Rh3 Ndf4 25 Rg3 hxg5 26 Nxc5 Bb7+ 27 Kg1 Rc4 28 Bxf4 Nxf4 29 Re3 Ng2 30 Rh3 g6 31 Nh7 Rh4 32 Nf6+ Kg7 33 Rxh4 Nxh4 34 Be4 Bxe4 35 Rxe4 Nf5 36 Rc4 Rd8 37 Kg2 Rd2 38 Rc8 Ne7 39 Re8 Rxb2 40 Rxe7 Rxa2 41 Re8 Re2 42 Rg8+ Kh6 43 h4 Rxe 44 Rxcg fxc3 45 Nxe5 b4 46 Nc6 a6 47 Kg3 Kg7 48 Kg4 Kf6 49 f4 Kg7 50 K g5 Kf7 51 Nd8+ Ke7 52 Kxcg Black Resigns. 1-0

RD4 BD2 Erickson-Shughart KING'S IND- IAN ATTACK 1 Nf3 d6 2 e4 e5 3 g3 Nf6 4 d3 Be7 5 Bg2 c6 6 0-0 Bg4 7 Nbd2 Nbd7 8 a4 0-0 9 h3 Bh5 10 Qe1 Re8 11 Nh2 d5 12 g4 Bg6 13 f3 Qc7 14 b3 Nc5 15 Kh1 Ne6 16 h4 h5 17 gxh5 Nx h5 18 Nb1 Nef4 19 Nc3 Qd8 20 Bxf4 Bxh5 21 Qd2 Nxf4 22 Rg1 Bg3 23 Bf1 Qh4 24 exd5 Bh5 25 Rxc3 Qxc3 26 Ne4 Bxf3+ 27 Nxf3 Qxf3+ 28 Kh2 cxd5 29 Ng3 Re6 30 Nf5 Qh5+ 31 White Resigns. 0-1

RD4 BD1 Motta-McBroom NIMZOVITCH-LARSEN 1 b3 e5 2 Bb2 Nc6 3 c4 Nf6 4 e3 Bc5 5 a3 a5 6 Be2 d5 7 cxd5 Nxd5 8 Nf3 e4 9 Ne5 Nxe5 10 Bxe5 Qg5 11 Bg3 Qf6 12 Ra2 Bd6 13 Bxd6 Qxd6 14 0-0 Be6 15 Qc2 Nf6 16 Nc3 Qe5 17 d3 exd3 18 Qxd3 Bxb3 19 Rb2 a4 20 Qb5+ Qxb5 21 Nxb5 Rc8 22 Rc1 0-0 23 Na7 Ra8 24 Nb5 Rc8 25 Na7 Ra8 26 Nb5 c6 27 Nd4 Bd5 28 f3 Rfd8 29 Nf5 Rd7 30 Nd4 Re8 31 e4 Bxe4 32 fxe4 Rxd4 33 Rxb7 Nxe4 34 Bf3 f5 35 h3 c5 36 Bxe4 fxe4 37 Rxc5 Rd6 38 Rc7 Rg6 39 Re7 Rxe7 40 Rxe7 Rg3 41 Rxe4 Rxa3 42 Re7 Ra2 43 Kh2 Rf2 44 Ra7 Rf4 45 Kg3 Rb4 46 Kf3 h6 47 Ke3 Kh7 48 Ra6 h5 49 Kd3 Rb2 50 Rxa4 Rxc2 51 Rh4 Kh5 52 Ke3 Kg5 53 Ra4 Rg3+ 54 Kf2 Rxh3 55 Ra5+ Kh6 56 Ra6+ g6 57 Ra8 Rc3 58 Rh8+ Kg5 59 Rd8 Rc4 60 Rd5+ Kg4 61 Rd6 g5 62 Rd5 Kh4 63 Rd1 g4 64 Rh1+ Kg5 65 Rd1 Rc2+ 66 Ke3 Rc3+ 67 Kf2 Rf3+ 68 Kg2 h4 69 Rd5+ Rf5 70 Rd8 h3+ 71 Kg1 Kh4 72 Rd4 Kg3 73 Rd3+ Rf3 74 Rd1 Rf4 75 Rd3+ K h4 76 Kh2 g3+ 77 White Resigns. 0-1

Games selection by Mike Jensen, TD.

MARATHON ACTION INVITATIONAL

April 7-8, 1990

Pl Name	Rate	1	2	3	4	5	6	7	8	9	10	11	12	13	14	15	16	TOT
1 Steve Smith	2175	X	1	1	1/2	1	1	1	1	1	1	1	1	1	1	1	1	14 1/2
2 John Thompson	2200	0	X	1	1	1	0	1	1	1	1	1	1	1	1	1	1	13
3 Paul Motta	2063	0	0	X	1	1	1	1	1	1	1	1	1	1	1	1	1	13
4 Chad Robinson	1717	1/2	0	0	X	0	1	0	1	1	1	1	1	1	1	1	1	10 1/2
5 Bill Lynch	1931	0	0	0	1	X	1/2	1/2	1	0	1	1	1	1	1	1	1	10
6 Bill Greer	1897	0	1	0	0	1/2	X	0	0	1	1	1	1	1	1	1	1	9 1/2
7 Thad Suits	1927	0	0	0	1	1/2	1	X	1	0	1	1	0	1/2	1	1	1	9
8 Steve Scarff	1616	0	0	0	0	0	1	0	X	1	1	1/2	1/2	1	1	1	1	8
9 Kip Limesand	1677	0	0	0	0	1	0	1	0	X	0	0	1	1	1	1	1	7
10 Les Brennan	1789	0	0	0	0	0	0	0	0	1	X	1/2	1	1	1	1	1	6 1/2
11 Dennis Petrak	1693	0	0	0	0	0	0	0	1/2	1	1/2	X	1	0	1	1	1	6
12 B.K. Parekh	1537	0	0	0	0	0	0	1	1/2	0	0	0	X	1	1	1	1	5 1/2
13 Harold Moneyhun	1462	0	0	0	0	0	0	1/2	0	0	0	0	1	0	X	0	1	3 1/2
14 Hardy Grover	1418	0	0	0	0	0	0	0	0	0	0	0	0	0	1	X	1	0
15 John Kennedy	1466	0	0	0	0	0	0	0	0	0	0	0	0	0	0	0	X	1
16 Don Price	1380	0	0	0	0	0	0	0	0	0	0	0	0	0	1	0	X	1

Les Brennan
Director
All games
@ G/30
time control.
Thanks to the
May School of
Broad-casting
for the use
their facility.

Steve Smith has provided commentary on several of his games - see pages 6-7.

SOUTHEAST SUDDEN DEATH OPEN

March 10, 1990

Pl Name	Rate	RD1	RD2	RD3	RD4	RD5	TOT
1 Bill Lynch	1915	W4	W11	W7	W5	L3	4.0
2 Paul Motta	2087	L8	W21	W6	W9	W7	4.0
3 John Thompson	2200	W17	W12	L5	W11	W1	4.0
4 Harold Moneyhun	1390	L1	W19	W12	W17	W11	4.0
5 Les Brennan	1769	W15	W9	W3	L1	D6	3.5
6 Kip Limesand	1652	W14	W8	L2	W10	D5	3.5
7 Chad Robinson	1712	W13	W10	L1	W8	L2	3.0
8 John Kennedy	1422	W2	L6	W18	L7	W12	3.0
9 Steve Yockim	1466	W16	L5	W13	L2	W15	3.0
10 Chad Couture	1422	W18	L7	W14	L6	W13	3.0
11 Steve Scarff	1643	W20	L1	W15	L3	L4	2.0
12 B.K. Parekh	1661	W19	L3	L4	W14	L8	2.0
13 Charles Thiel	1340	L7	W20	L9	W16	L10	2.0
14 Don Price	1388	L6	W17	L10	L12	BYE	2.0
15 Kirk Jacobs	1317	L5	W16	L11	W18	L9	2.0
16 Mike Lorenz	1125	L9	L15	BYE	L13	W19	2.0
17 Hardy Grover	1489	L3	L14	W21	L4	W20	2.0
18 Jason Bird	1102	L10	BYE	L8	L15	W21	2.0
19 John Schmoll	1255	L12	L4	W20	W21	L16	2.0
20 Zach Yockim	1172	L11	L13	L19	BYE	L17	1.0
21 T.J. Schwartz	919	BYE	L2	L17	L19	L18	1.0

RD1 BD2 Kennedy-Motta KING PAWN 1 e4 Nc6 2 Nc3 d6 3 f4 Nf6 4 Nf3 Bg4 5 Bb5 h6 6 Be2 e5 7 d3 Be7 8 O-O 0-0 9 Be3 Re8 10 Nd5 Nxd5 11 exd5 Bxf3 12 Rxf3 exf4 13 Bf2 Ne5 14 Rxf4 Bg5 15 Rb4 b5 16 a4 Rb8 17 d4 Nc4 18 Bxc4 bxc4 19 Rxc4 Rxb2 20 Rc6 Rb6 21 c4 Qe7 22 Ra2 Rxc6 23 dxc6 Be3 24 d5 Bxf2 25 Rxf2 Qe5 26 Qb3 Qd4 27 Qb2 Qxc4 28 Qf1 Qxd5 29 h3 Qxc6 30 Rxf7 Qc5+ 31 Kh1 Queen's and Rooks were exchanged and Black lost on time. 1-0

RD2 BD4 Couture-Robinson QUEEN PAWN 1 d4 d5 2 Nf3 Nf6 3 Nc3 Bf5 4 g3 e6 5 Bg2 c6 6 Nh4 Bg6 7 Nxc6 hxg6 8 e4 dxe4 9 Nxe4 Nd7 10 Qf3 Nb6 11 Be3 Bb4+ 12 c3 Bxe7 13 Nxf6+ Bxf6 14 O-O Qc7 15 h3 O-O-O 16 b3 Nd5 17 c4 Nxe3 18 Qxe3 Bxd4 19 Qe1 Qxg3 20 Rd1 Rxh3 21 Qe5 Qxe5 22 Bxh3 Qg3+ 23 Bg2 Rh8 24 Re1 Qxf2++ 0-1

RD5 BD4 Moneyhun-Scarff BIRD'S 1 f4 d5 2 b3 Nf6 3 Nf3 c5 4 e3 Bg4 5 Bb2 e6 6 Be2 Be7 7 d3 Nd7 8 Nd2 O-O 9 O-O Qc7 10 Ne5 Bxe2 11 Qxe2

RD5 BD2 Robinson-Motta SOLLER 1 d4 e5 2 dxe5 Nc6 3 Nf3 f6 4 e4 fxe5 5 Bc4 Nf6 6 Ng5 Bc5 7 Nf7 Qe7 8 Nxh8 Bxf2+ 9 Kf1 d5 10 Bxd5 Bg4 11 Bf7+ Kf8 12 Qd3 Rd8 13 Qxd8 Qxd8 14 Rxf2 Nxe4 15 Ke3 Qd4++ 0-1

RD3 BD1 Thompson-Brennan SICILIAN 1 e4 c5 2 d4 cxd4 3 c3 d3 4 Bxd3 Nc6 5 Nf3 d5 6 exd5 Qxd5 7 Be3 e5 8 Qc2 Nf6 9 Nbd2 Bg4 10 Bc4 Qd7 11 O-O Bd6 12 Rfe1 O-O 13 Rad1 Bf5 14 Qa4 a6 15 Bb6 e4 16 Ng5 Rae8 17 Bb3 Qe7 18 Nc4 Bxh2+ 19 Kxh2 Ng4+ 20 Kg1 Qxg5 21 Ne3 Nce5 22 Nxc4 Qxg4 23 Re3 Nf3+ 24 Kf1 Nh2+ 25 Ke1 Qxg2 26 Bxf7+ Rxf7 27 Qxe8+ Rf8 28 Qe7 Bg4 29 f3 Nxf3+ 30 Rxf3 Qxf3 31 Qxf8+ Kxf8 32 Rd8+ Ke7 White's flag fell in about 3 moves. 0-1

CROCUS OPEN

April 21-22, 1990

P1 Name	Rate	RD1	RD2	RD3	RD4	RD5	TOT
1 Paul Motta	2041	W12	W8	W7	D4	W6	4.5
2 Dave Shughart	1846	W14	L5	W6	W9	W7	4.0
3 Mike Jensen	2092	W11	L9	W10	W5	W4	4.0
4 Thad Suits	1927	W15	W17	W5	D1	L3	3.5
5 Kip Limesand	1691	W18	W2	L4	L3	W13	3.0
6 Zygmund Mayer	2102	W9	W11	L2	W8	L1	3.0
7 Darren Stacey	1813	W13	W16	L1	W12	L2	3.0
8 Bill McBroom	1709	W19	L1	W16	L6	W9	3.0
9 Arman Goplen	1691	L6	W3	W17	L2	L8	2.0
10 Don Gisselbeck	UNR	L17	W15	L3	L11	W16	2.0
11 Ray Jorgenson	1535	L3	L6	W21	W10	WD	2.0
12 Lyle Petersen	1396	L1	W19	W14	L7	WD	2.0
13 Eriel Mayer	1181	L7	L20	BYE	W14	L5	2.0
14 Richie Harris	1297	L2	W18	L12	L13	D15	1.5
15 Jeffrey Lippman	1388	L4	L10	D18	D16	D14	1.5
16 Carl Jacobs	1152	BYE	L7	L8	D15	L10	1.5
17 Ron Erickson	1753	W10	L4	L9	WD	WD	1.0
18 Mike Culleto	UNR	L5	L14	D15	WD	WD	0.5
19 Scott Kingdon	UNR	L8	L12	WD	WD	WD	0
20 Nick Pazderic	1695	—	W13	WD	WD	WD	1.0
21 Dan McCourt	1831	—	—	L11	WD	WD	0

Ra4 33 c5+ Ka7 34 cxd6 cxd6 35 Ne6 Qh4 36 Nbd4 Rb4 37 a3 Ra4 38 f5 Qf6 39 Kb1 b5 40 Rg1
b4 41 axb4 Kb6 42 Rg6 Qe5 43 Nc5 Kc7 44 Nxa4 Black Resigns. 1-0

Mayer-Shughart 1 e4 e5 2 Nf3 d6 3 d4 Bg4 4 dxe5 Nd7 5 exd6 Bxd6 6 Be2 Qe7 7 h3 Bh5 8 Q
d5 Nf6 9 Qxb7 Rb8 10 Qxa7 Bc5 11 Qxc7 Bxf2+ 12 Kxf2 Nxe4+ 13 Kg1 0-0 14 g4 Rfc8 15 Qf4 R
xc2 16 Bd3 Ng3 17 Nc3 QC5+ 18 Qe3 Rxc1+ 19 Kf2 Nxl+ 20 Ke2 Rxb2+ 21 Nd2 Bxg4+ 22 hxg4 Q
xe3+ 23 Kxe3 Rxa1 24 Nde4 Ne5 25 Be2 Re1 26 Kd4 Rxe2 27 Nxe2 Rxe2 28 Kxe5 Rxa2 29 g5 Re2
30 Kf4 Nf2 31 Ng3 Nh3+ 32 Kg4 Rg2 33 Kxh3 Rxg3+ 34 Kxg3 Rf8 35 Kf4 Ke7 36 Ke5 f6+ 37 Kf5
fxg5 38 Kxg5 Ke6 39 Kh5 Kf5 40 White Resigns. 0-1

GAMBIT 1 d4 d5 2 c4 c6 3 Nc3 Bf5 4 cxd5 cxd5 5 Qb3 e6 6 Qxb7 Nd7 7 Bf4 Nf6 8 e3 a6 9 Bx
a3 Bb4 10 Qxb4 Rxa6 11 Nb5 Rb6 12 Nd6+ Kf8 13 Qa3 Kg8 14 Rc1 Nf8 15 Rc8 Qe7 16 Nf3 e5 17
dxe5 Bxc8 18 Nxc8 Qxa3 19 bxa3 Rb1+ 20 Ke2 Rb2+ 21 Nd2 Rxd2+ 22 Kxd2 Ne4+ 23 Ke2 Ng6 24
Rc1 h6 25 f3 Na5 26 Nd6 Nxf4 27 exf4 Ne3 28 Rc8+ Black Resigns. 1-0

Mayer NIMZOVITCH-LARSEN 1 b3 d5 2 Bb2 Nc6 3 e3 e5 4 c4 d4 5 exd4 exd4 6 d3 Nf6 7 Nd2 B
f5 8 a3 a5 9 Ngf3 Qe7+ 10 Qe2 0-0-0 11 Qxe7 Bxe7 12 0-0-0 Ng4 13 Kc2 Nxf2 14 Be2 Nxl 15
Rxl Rhe8 16 h3 Bf6 17 Ke1 h5 18 Ne4 Bxe4 19 dxe4 d3 20 Bxd2 Bxb2 21 Kxb2 Rxd3 22 White
Resigns. 0-1

RD5 BD4 Goplen-McBroom SICILIAN 1 e4 c5 2 Nf3 d6 3 d4 cxd4 4 Nxd4 Nf6
5 Nc3 e6 6 Be3 a6 7 Be2 Be7 8 0-0 0-0 9 f4 Nc6 10 Qe1 Qc7 11 Qg3 b5 12 Nxc6 Qxc6 13 e5 N
d5 14 Bf3 Qc4 15 Nxd5 exd5 16 c3 dxe5 17 fxd5 Bc5 18 Qf2 Bxd3 19 Qxd3 Bd6 20 Rfd1 Rac8
21 Kh1 Rc7 22 Rd4 Qc5 23 Qd2 Rd8 24 Rd1 Rcd7 25 Rh4 Qe7 26 Rh5 g6 27 Rg5 f6 28 exf6 Qxf6
29 h4 h6 30 Rg4 Bxg4 31 Bxg4 Qxh4+ 32 Bh3 d4 33 Qe2 Re7 34 Qd3 Re1+ 35 Rxe1 Qxe1+ 36 Kg2
Qe5+ 37 Kg1 Kg7 38 Kh1 Qe3 39 Qd1 d3 40 Bh4 d2 41 Kh2 Qe1 42 Qf3 Qe5+ 43 Kh1 White Re-
signs. 0-1

RD5 BD3 Stacey-Shughart KING'S GAMBIT 1 e4 e5 2 f4 exf4 3 Nf3 Nf6 4 e5
Qe7 5 d4 Nd5 6 Be2 Nc6 7 0-0 d6 8 Re1 dxe5 9 Bb5 e4 10 Ne5 Qd6 11 Rxe4 Be6 12 c4 Nf6 13
Re1 0-0-0 14 Nxc6 bxc6 15 Ba6+ Kb8 16 Qb3+ Qb4 17 Rd1 Qxb3 18 axb3 Bc5 19 Kf1 Bxd4 20 R
a4 Bb6 21 Re1 g5 22 Nc3 Ng4 23 c5 Bxc5 24 Re4 Rhe8 25 Reb4+ Bb6 26 Be2 Nxl+ 27 Ke1 Bg4
28 Bxf4 gxf4 29 Rxf4 Bxe2 30 Nxe2 Rd7 31 Rae4 Rde7 32 Rxe7 Rxe7 33 Bg1 Rd7+ 34 Ke1 Nf3+
35 gxf3 Re7 36 Kf1 Be3 37 Rxh7 Kb7 38 Rh4 Kb6 39 Nf4 Bxf4 40 Rxf4 Kc5 41 Ra4 Re3 42 Rf4
Re7 43 Kf7 a5 44 Rc4+ Kb5 45 Rf4 c5 46 Ra4 Rd7 47 Ke3 Rd4 48 Rxd4 cxd4+ 49 Kxd4 Kb4 50 K
d5 Kxb3 51 Kc5 a4 52 Kb5 c5 53 Kxc5 Kxb 54 White Resigns. 0-1

For this final round decisive game see page 8.

RD5 BD1 Mayer-Motta
Games selected by Sherwood Moore.

- [1] Team vs Team Open (Bill McBroom, MT)
 A. 1 day, 2 rounds WY board # vs MT board # 2 games, 1 with each color
 B. 2 day, 4 rounds WY board # vs MT board # 4 games, 2 with each color
 Extra players from one state play rated mini-matches against each other.

Advantages

Matchup Best Players
 Color Equalization

Disadvantages

Extra Player Disappointment
 Uncertain Number of Boards

- [2] Standard Swiss with Team Scoring (Les Brennan, MT - MCA President)
 A 5RSS tournament open to Montana and Wyoming players is run. Any games between Montana and Wyoming players count toward the match score, with handicap scoring as follows: Winner scores 1 + opp. rating/his rating; Loser scores 0 + opp. rating/his rating; Draw scores 0.5 + opp. rating/his rating. This equalizes team scoring unless upsets occur. The team with more, or greater, upsets will win.

Everyone Participates
 No Special Organization Required
 Scoring Rewards Upsets

Best Players May not Meet
 Colors Uncertain
 Uncertain Number of Games

- [3] Team vs Team Closed (Harold Moye, WY - WCA Presidential Candidate)
 Same as [1]A. or [1]B. above, except pre-establish teams (with standbys on call) in advance to insure equal numbers of players.

Matchup Best Players
 Color Equalization
 Certain Number of Boards

Limited Participation
 Scheduling Dependent on Individuals?
 Organizational Problems (No shows?)

- [4] Team vs Team Closed (Steve Smith, WY - WCA Newsletter Editor)
 Pre-establish teams of 5 players (with standbys on call) and each player on each team plays all five players on the other team. The match score is handicapped based on the difference in average team rating and USCF statistical "win expectancies". Example: Team A is 43 to 57 points stronger on average, and must score 14.5/25 or more to win the match. The team with more upsets should win.

Matchup Best Players
 Colors Even Out
 Certain Number of Boards

Limited Participation
 Scheduling Dependent on Individuals?
 Organizational Problems?

- [5] Swiss + Team, Open (Bill Lynch, MT - MCA Newsletter Editor)
 A. Conduct a 4RSS open tournament. In lieu of Saturday night's round, play a board vs board match, with colors alternating down boards. Extra Players may watch or choose partners for an extra rated game. (Format of a recently started ND/SD match event - host state alternates.)
 B. Saturday is a 4RSS at 40/80, G/30 (Rounds 9, 1, 5, 9) and Sunday is a 2 round team match as in [1]A. above.
 Either of these matches could be handicapped using Brennan's scoring system.

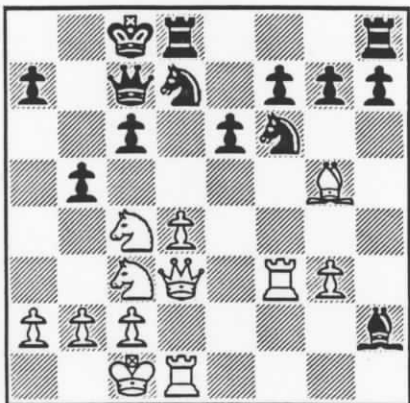
Everyone Participates
 No Special Organizing Required
 Colors Even Out, Matchup Best Players

Uncertain Number of Games

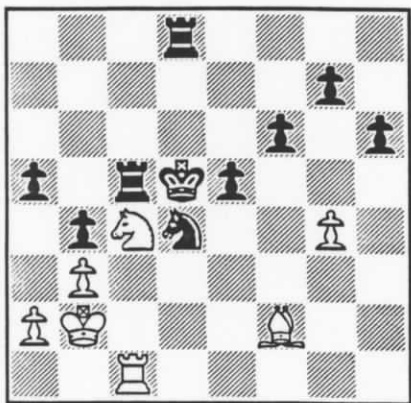
Beyond format, the biggest challenge will be finding sites which will draw well and are accessible at the time of year this event may be scheduled. Jackson and Sheridan have been mentioned in Wyoming - the former being more "central" for the majority of Montana players. West Yellowstone, Chico and Billings are some possibilities in Montana - though all present travel challenges for some of Wyoming's better players. Yellowstone Park may be a valid option in the summertime, which could promote family groups to accompany many players. There is a lot of potential for good times and good chess in this "rivalry". Please think about these options and be prepared to discuss your ideas at the business meetings of the respective State Associations. - WML

Continued from the previous page

What a time to go pawn grabbing! I didn't like the idea of losing my bishop – the resulting dark square weakness was
ry. Better was 12. ... O-O-O.
13. Rf3 O-O-O 14. g3 b5



15. Nd2?? The losing move. 15. Bf4! bc4 (forced) 16. Bc7 cd3 17. Bd8 Rd8 18. Rh1 Bg3 19. Rg3 and after white picks off another pawn the endgame will be roughly equal. 15. ... Ne5 16. Qe2 Nf3 17. Bf4 Nd4 18. Qh2 e5 19. Qh3 Qd7 20. Qd7 Nd7 21. Be3 Nf6 22. Rf1 Rd7 23. Nde4 Ne4 24. Ne4 Rhd8 25. c3 Ne6 26. g4 h6 27. Kc2 28. Ng3 Kb7 29. Ne4 Rd3 30. Re1 31. Nf2 R3d6 32. Ne4 R6d7 33. Bc1 c5 34. Be3 Kc6 35. b3 b4 36. cb4 cb4 37. Rc1 Kd5 38. Nd2 Rc7 39. Nc4 Nd4 40. Kb2 Rc5 41. Bf2



41. ... Kc6?? Whoops! This drops a full rook and a pawn! 42. Na5 Strange things happen when you play Action Chess. After playing 42. Na5, which should win, Paul offered a draw and I declined! The reason – Paul had only a few seconds left for the rest of the game. 42. ... Kd5 43. Rc5 Kc5 44. Nb7 Kd5 45. Nd8 Ke4 46. Nb7 Kf3 47. Time forfeit.

Blackmar-Diemer Gambit

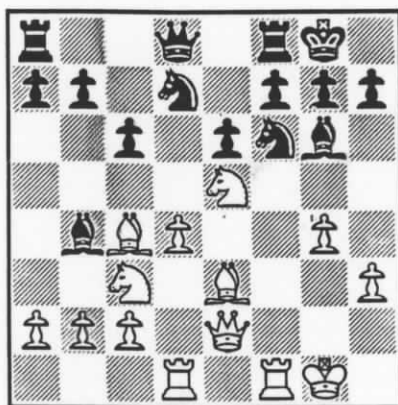
Bill Lynch 1931

Steve Smith 2175

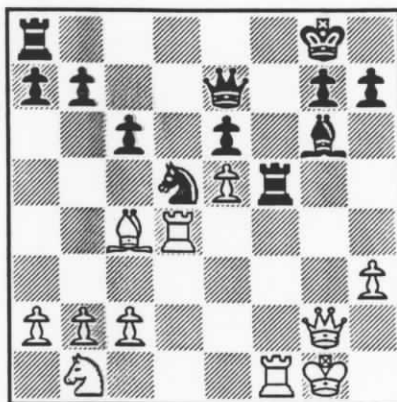
Billings Marathon, Round 6, 4/7/90

Bill has been successfully playing many gambits lately, so I was more than a little worried. Paul Motta and Steve Scarff are starting to win BDG converts!

1. e4 d5 2. d4 de4 3. Nc3 Nf6 4. f3 ef3 5. Nf3 Bg4 6. Be3 e6 7. Bc4 Bb4 8. O-O O-O 9. Qe2 c6 10. Rad1 Nbd7 11. h3 Bh5 12. g4 Bg6 13. Ne5



13. ... Ne5 14. de5 Nd5 15. Nb1 Qe7 16. Bd4 Bc5 17. Qf2 Bd4 18. Rd4 f5 19. gf5 Rf5 20. Qg2?



20. ... Ne3 21. Resigns

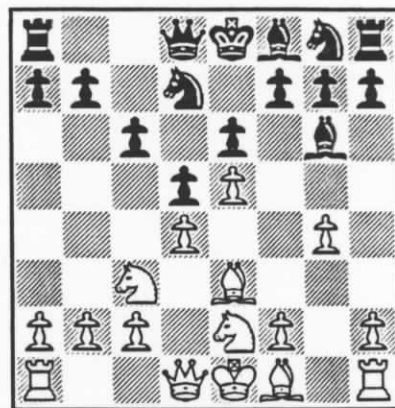
Caro-Kann Advance Variation

Steve Smith 2175

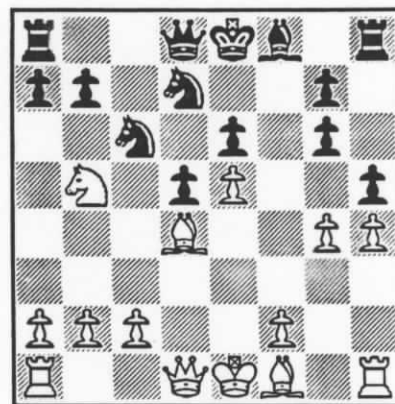
Thad Suits 1927

Billings Marathon, Round 11, 4/8/90

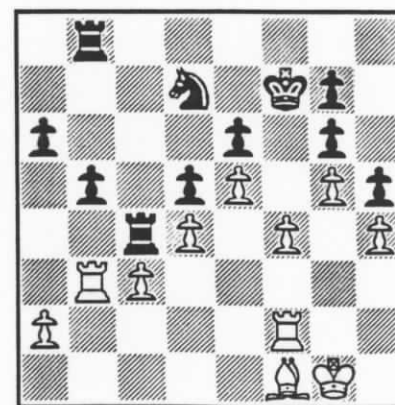
I played the wild advance variation of the Caro-Kann. Thad gained an advantage, but misplayed the transition to the endgame. 1. e4 c6 2. d4 d5 3. e5 Bf5 4. Nc3 e6 5. g4 Bg6 6. Be3 Nd7 7. Nge2



7. ... c5 8. Nf4 cd4 9. Bd4 Ne7 10. h4 h5 11. Nb5 Nc6 12. Ng6 fg6



13. f4 Be7 14. g5 a6 15. Nc3 Bb4 16. Qd3 Nd4 17. Qd4 Qa5 18. Bh3 Bc3 19. bc3 Kf7 20. O-O Qc5 21. Rab1 Rab8 22. Rb3 Rbc8 23. Rf2 Qd4 24. cd4 Rc4 25. c3 b5 26. Bf1



26. ... Rc7 27. Rfb2 Rcb7 28. a4 Ke7 29. ab5 ab5 30. Rb5 Rb5 31. Rb5 Rb5 32. Bb5 I was low on time and stopped writing down the moves at this point. After 15 or 20 more moves black resigned.

Continued from page 4: Crocus, RD5 BD1 Mayer-Motta ELEPHANT GAMBIT 1 e4 e5 2 Nf3 d5 3 exd5 e4 4 Qe2 Nf6 5 d3 Bb4+ 6 Bd2 0-0 7 dxe4 Re8 8 e5 Nxd5 9 a3 Bxd2+ 10 Qxd2 BG4 11 c4 Nc6 12 Be2 Nxe5 13 Nxe5 Bxe2 14 Qxe2 Nf4 15 Qf3 Nd3+ 16 Kf1 Nxe5 17 Qd5 Nxc4 18 Nc3 Nxb2 19 Rb1 Qf6 20 Ne4 Qa6+ 21 Kg1 Rad8 22 Qg5 Qd3 23 Rel Rxe4 24 Qc1 Rxe1+ 25 Qxel Qd1 26 K f1 Qxel+ 27 Kxel Rdl+ 28 Ke2 Rxh1 29 White Resigns. 0-1

US Chess Federation & Montana Chess Association or Other State Membership required in all tournaments. USCF Tournament Membership available at \$1.50/game played. Expert players, rating 2000-2199, enter for half of listed values. Masters enter all events for free.

MAY 19-20, 1990: 55TH MONTANA OPEN ### Sheraton Hotel, 400 10th Ave. S., Great Falls, MT 59401. 5 Round Swiss: 9:30am, 2:00pm, 7:00pm; 9:00am, 2:00pm. 40 moves / 2 hours, 20 moves / hour. Entry fee = \$15 advance, \$20 at site 8:00-9:00am May 19. Prizes: Trophies- 1st, 2nd, 3rd, Top Sr., Top Jr., Class prizes per entries. Sponsor - Great Falls Chess Club & Montana Chess Association / Dennis Petrak, P.O. Box 2830, Great Falls, MT 59401. 406-761-4954 / 452-4786. ### Room Reservations: Sheraton Hotel, 406-727-7200. Montana Chess Association Annual business meeting 9:00-9:30am, May 19. ### Top three Montana finishers qualify for the State Closed Championship playoff.

JUNE 16-17, 1990: BOZEMAN OPEN ### Montana State University, Room 1128 Wilson Hall, Cleveland St., Bozeman, MT 59715. 4 Round Swiss: 12:00noon, 6:30pm; 9:00am, 2:30pm. Times - 30 moves / 90 minutes, 20 moves / hour, Sudden Death / 30 minutes. Entry fee = \$18 adv., \$23 at site 11:00-11:30am, June 16. Two Sections - to be divided by ratings at site for equal size & equal prizes. Prizes: 1st, 2nd Top Upset each section (80%+ of entries - class prizes as entries permit) Sponsor - Montana Chess Association / Zygmund Mayer, Rt. 62, Box 3077-7C, Livingston, MT 406-222-3929

JULY 14-15, 1990: MIDSUMMER OPEN ### Room 362 Social Science Bldg., U of MT Campus, Missoula, MT 59812. 5 Round Swiss: 9:30am, 2:00pm, 7:00pm; 9:00am, 2:00pm. 40 moves / 2 hours, 20 moves / hour. Entry fee = \$8 advance, \$10 at site 8:00-9:00am July 14. Prizes: Trophies - 1st, 2nd, 3rd, Medals - Best Under 1700, 1500, 1300. Sponsor - University-Community Chess Club / Nick Pazderic, 220 Helena Ct. S., Missoula, MT 59801. 406-549-3867

AUGUST 25-26, 1990: RIMROCK OPEN ### May School of Broadcasting, 1320 Grand, Billings, MT 59102. 4 Round Swiss: 1:00pm, 6:00pm; 8:30am, 1:00pm. 40 moves / 2 hours, 20 moves / hour. Entry fee = \$10 advance, \$15 at site Noon-12:30pm August 25. Prizes: \$\$ per entries. Sponsor - Billings Chess Club / Montana Chess Association / Bill Lynch, 4245 Palisades Park Dr., Billings, MT 59106. 406-652-2063 after 5.

OCTOBER 6-7, 1990: CHINOOK OPEN ### Sheraton Hotel, 400 10th Ave. S., Great Falls, MT

OCTOBER 20-21, 1990: JACKSON OPEN ### Priemiere Regional Tournament, Jackson, Wyoming.

*****8*****

PRESORTED
FIRST CLASS

12475278 1927 9010
Thad Suits
3601 1st Ave. N.
Great Falls MT 59401

Billings, Montana 59106
4245 Palisades Park Dr.
Editor, Secretary/treasurer
William M. Lynch

\$3/yr Junior \$50/yr Patron
Membership = \$6/yr Regular
by Education & Competition
Promoting Chess Excellence
U.S. CHESS FEDERATION
an affiliate of the
MONTANA CHESS ASSOCIATION
published by the
MONTANA CHESS NEWS
#####

