

The Montana Chess Newsletter

Montana Chess Association

INSIDE THIS ISSUE:

| | |
|---------------------------------------|---|
| 72nd Montana Open | 1 |
| Participants for Closed Barto decided | 2 |
| Game result challenged at Open | 2 |
| MCA Business Meeting Held | 2 |
| Feature Montana Game | 3 |
| Upcoming Tournaments | 3 |
| Grand Prix Standings | 4 |

THE 72ND MONTANA OPEN HELD IN MISSOULA BY: BILL MCBROOM

72nd Montana Open

Missoula hosted the 72nd State Open the weekend of April 21 and 22. A total of 35 players participated—the largest turnout in a number of years. Arman Goplen came all the way from North Dakota and he brought a friend, Steven Legenfelder. The Harmans brought their young sons (Carl, 12, and Luke, 8) from Boise. Luke did well and got the respect of every player with whom he played. This was virtually a certainty after beating a strong A player in the first round. And, of course, our friends from Spokane (and environs) came out in force: contributing nine of the total number of participants.



Speaking of our Spokane comrades, David Griffin made a very generous donation of \$100. We were able to sweeten the prize fund nicely. Thanks, Dave!

John Julian of Spokane started on board one and stayed there four five rounds. In earning his first place with 4 ½ points (and \$175), he was obliged to take on a C player, a strong B player and three A players. There was a three-way tie for second-third involving Michael Murray (Seattle), Phil Weyland (Post Falls), and Zach Countryman (Spokane)—each had a score of 4 and shared \$150. The best the C players could do was an even score and this was accomplished by Ron Weyland of Post Falls, ID, Missoula's Bob Rajala, and eight-year-old Luke Harman from Boise. In contrast, one D player (Ward Chow of Spokane) and a Missoula

unrated (Eric Eklund) each earned a plus score of three points.

The State Open concludes the 2006-2007 grand prix cycle and is the last part of the process of seeding the six players in the Closed/Barto (June 9 and 10 in Butte). Billings is the site for the 2008 State Open and the new Executive Board will soon select a date (in April) and secure a location.



Black to move and win. From Round 2. EdMcLaughlin-John Julian. 44...? (Answer next page)



PARTICIPANTS FOR CLOSED BARTO DECIDED

The 2007 Montana Open marked the end of the Grand Prix points season. With this contest finished the MCA was able to announce the 6 players who will be invited to the Closed Barto and compete for the title of Montana State champ.

The first player seeded is last year's champ, Mike Jensen.

The next two seeds are the Montana players with the most Grand Prix points for the 2006-2007 season. That honor was won by a landslide by David Duke and Jim Skovron who both more than doubled the next highest point winner. The last three invitations go to the Montana player with the highest scores in the Montana

Open. Those players are Jens Lundell, Ed McLaughlin and Romie Carpenter.

The tournament, a 5-round round robin, will be held on June 9th and 10th at the Best Western Inn in Butte in conjunction with the Open Barto Satellite Tournament. Wish all 6 of these talented players good luck!



The Closed Barto determines the Montana State Champion!

GAME RESULT CHALLENGED AT OPEN

There was a battle both on and off the board during the fourth round of the Montana Open Sunday, May 22nd. Two players were duking it out on the back table with pieces flying off the board. With nothing left but kings, queens and three pawns apiece, Black made a comment somewhere along the lines of, "It looks like a draw." White replied, "Yes it does, but let's find out." Black took this to be an acceptance of a draw offer, while White saw this as a refusal of a draw offer.

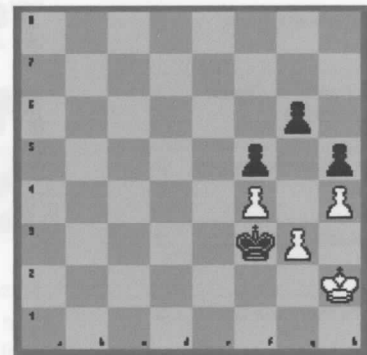
Both players continued to move pieces, record moves and kibitz about the position being "drawish" until Black made a mistake [diagram]. The game continued 1...Kg4? at which point Black commented incorrectly, "It's a stalemate." White looked for a moment, played 2. Kg2 and said, "play on". The game continued 2...g5 3. hxg5 and went on for a number of moves until, two moves before checkmate, White asked, "Do you want to play on?"

Bewildered, Black replied, "It was a draw 15 moves ago," explaining further that he hadn't really been playing seriously for the last 15 moves.

Tournament director Bill McBroom was called over and the players went to the analysis room to present their respective cases. Witnesses were called in and the game was replayed move by move. Not having enough evidence to determine if a draw offer was in fact made and/or accepted, McBroom made the decision to call the game a draw. White took his dispute to the on-site appeals committee which upheld McBroom's decision. Both parties seemed amenable to the appeals committee's decision.

In a pointed message on the website, McBroom cautions players, "The lesson of this is make sure you and your opponent have the same understanding and promptly sign both score sheets with the outcome indicated...Analysis in the playing hall is not only proscribed in most tournaments, but it also

risks the sort of misunderstanding described here."



Black to move-A draw is inevitable after 1...Kf2

Answer to puzzle on previous page:
44...Qxf2! 45. Qxf2 {45. Nxf2? Ng3#}
Ng3+ 46. Qxg3 hxg3

MCA BUISINESS MEETING HELD

Keeping with tradition, the MCA's annual business meeting was held between Rounds 4 and 5 of the Montana Open on April 22nd. The agenda, described as "vanilla" by President Bill McBroom, included general reports from the departments as well as the election of officers.

Secretary Dan McCourt reported that the MCA coffers had about \$550 and that number would probably increase after all of the dust settled from the Montana Open. President Bill McBroom gave an update on the trial of an MCA member with a history of disruptive behavior (details are on the website). The trial is scheduled for June 10th between the 4th

and 5th rounds of the Barto Memorial tournament in Butte.

As for election of officers, Bill McBroom accepted the nomination for president stating that he had some unfinished business he wants to tie up. Jim Skovron wanted to "give someone else a chance" as Executive VP and declined the nomination. Bob Martin dutifully stepped in. The Eastern and Western Vice President offices were filled by David Duke and Adam Milligan respectively. And Dan McCourt will serve another term on the Executive Board as Secretary/Treasurer.

In other news, the MCA has been invited

to send a team to a Tri-State match along with Washington and Idaho. There was little information as to the format of the match (i.e. number of players, how to deal with an odd number of teams, the location of the match, etc.), but Bill McBroom volunteered to follow up and disseminate information as he gets it.

In the "Good and Welfare" section of the meeting, a hearty "thank you" and well-deserved round of applause was offered to the numerous player who traveled from Washington, Idaho, and even North Dakota to make the 72nd Montana Open one of the most well attended Montana tournaments in some time.

FEATURE GAME— "THE CRIMINAL" - THIS EDITION OF THE GAME OF THE DAY COMES FROM THE FIRST ROUND OF THE 2007 MONTANA OPEN. BRETT THOMAS-DEJONG FINDS OUT THE HARD WAY AGAINST STEPHEN TAMANG THAT NIMZOWITCH WAS PROBABLY RIGHT WHEN HE SAID, "THE PASSED PAWN IS A CRIMINAL, WHO SHOULD BE KEPT UNDER LOCK AND KEY; MILD MEASURES, SUCH AS POLICE SURVEILLANCE, ARE NOT SUFFICIENT."

[Event "72nd Montana Open"]
 [Round "1"]
 [White "Brett Thomas-DeJongh"]
 [Black "Stephen Tamang"]
 [Result "0-1"]

1. e4 c5 2. d4 cxd4 3. c3 dxc3 4. Nxc3

{The Smith-Morra gambit. [diagram 1]. A pet line of Brett's. The plan is to open lines for white's pieces and create lasting initiative from his lead in development. Black's plan is to develop quickly and hopefully get to a pawn-up endgame}

4...Nc6 5. Bc4 e6 6. Nf3 Qc7 7. O-O Nf6 8. Nb5

{If 8. Qe2 Black can play the notorious "Siberian Trap"! 8...Ng4 9. h3 Nd4! Winning the Queen.}

8...Qb8 9. Re1

{A little bit too passive. 9. e5! is necessary. In these gambit openings it is important to keep the initiative. Play might have continued 9. e5 Nxe5 10. Nxe5 Qxe5 11. Re1 Qc5 12. Qe2 a6 13. Be3 Qe5 14. f4 Qb8 15. Nc3 [diagram 2] and White has a grotesque lead in development in exchange for the two pawns. (Toga II)}

a6 10. Nbd4 Bb4 11. Bd2 Bxd2 12. Qxd2 Nxd4 13. Qxd4 O-O 14. Rad1 b5 15. Bb3?

{This move gives away the advantage. Again 14. e5 was the correct move.}

Bb7 16. Ne5 Rd8 17. Rd3 d6 18. Nf3 Qc7 19. Rc3 Qe7 20. Qb6 Bxc4

{and the passed pawn comes into being! Incidentally, if Black captures with the knight, then 21. Rc7! winning the Bishop.}

21. Nd4 Nd5 22. Bxd5 Bxd5 23. Rc7 Rd7 24. Nc6 Bxc6 25. Qxc6 Rad8 26. Rxd7 Qxd7 27. Qxa6 d5 28. Rc1 d4 29. Rc5

{Not paying enough attention to the threat of a passed pawn. 29. Qc6! Qxc6 30. Rxc6 d3 31. Rc1 f5. 32. f3 e5 33. Kf2 f4 34. a3 h6 35. Rd1 Rd4 36. b3 Kf7. 37 Rd2 [diagram 3]. And it is difficult for black to make progress without losing the passed pawn.}

29...d3 30. Rc1 d2 31. Rd1 Qc7 32. Kf1?

{Loses immediately. 23 Qxb5 may have held for a little longer. 23...Qc1 24. Qe2 Qxb2 25. a4. Now both of blacks major pieces are tied down to defending the d-pawn and white has a passed a pawn to draw one of them away. Brett is still down, but with this much material on the board he may be able to hold the draw.}

32...Qc4+ 0-1

{33. Kf1 Qc1 and white loses the rook to avoid the back rank mate.}



Diagram 1—Smith-Morra Gambit



Diagram 2—Ahead in development

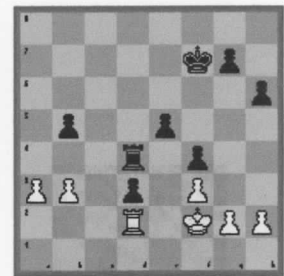


Diagram 3—Tough to make progress

Upcoming Tournaments
 (see story on page 2 for information on the Closed Barto being held in June!)

May 19th, 2007

First Annual Kalispell Chess Tournament

LOCATION:
 Kalispell Christian Church
 1075 Foys Lake Road
 Kalispell, MT

DESCRIPTION:
 Registration: 9:00-9:30
 Four Round Swiss
 10: 00, 11:30, 1:30, 3:30
 G=30, G=30, G=45, G=60

ENTRY FEE: \$10

PRIZES:
 1ST \$100, 2ND \$50

CONTACT:
 Adam Milligan
 1.406.857.3206
 milligan@bresnan.net

June 10th, 2007

2007 Barto Memorial Satellite

LOCATION:
 Location: Best Western Butte Plaza Inn; 2900 Harrison (by Harrison Ave. I-90 exit); 800.543.5814 for reservations (mention Montana Chess)

DESCRIPTION:
 5R Swiss
 Time Control: g=120

Registration: 9:00-9:30
 Mandatory players meeting 9:45
 Rounds 10:00, 2:30, and 7:00 Sat.;
 9:00 and 2:00 Sun
 NS, NC, wheel chair accessible
ENTRY FEE:
 EF=\$25 by June 7, \$30 at the door,
 Juniors 1/2 price;
PRIZES:
 1st=\$75, 2nd=\$50 (based on 15 paid adults)

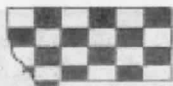
CONTACT:
 William H. McBroom
 2321 Raymond Ave.
 Missoula, MT 59802
 checks to "MCA"
 for info: 406.728.4654—no phone entries

Montana Chess Association

Adam Milligan
 MCN Editor/Western VP
 PO Box 319
 Somers, MT 59932

Phone: 406-857-3206
 E-mail: milligan@bresnan.net

Visit the website !
www.montanachess.org



Montana Chess Association

Promoting a love of the game in Montana!

THE MONTANA CHESS ASSOCIATION

From the MCA Constitution

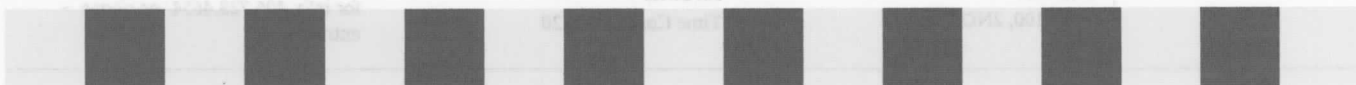
"The purposes of the Montana Chess Association are to support interest in chess, further chess education, and promote activities that enhance members' enjoyment of the game."

Executive Board:

- President:*
William McBroom
- Executive Vice President:*
Bob Martin
- Eastern Vice President:*
David Duke
- Western Vice President:*
Adam Milligan
- Secretary/Treasurer:*
Dan McCourt
- MCN Editor:*
Adam Milligan

Current Grand Prix Standings

- **Duke, David-49.92**
- **Skovron, Jim-42.56**
- McLaughlin, Ed-17.1
- McCourt, Dan-14.8
- Lundell, Jen-14.42
- Jensen, J. Mike-13.79
- Martin, Rober-9.28
- Hay, John-9.26
- Carpenter, Romie-8.69
- McBroom, William-5.55
- Pallares, Henry-5.55
- Thomas, Brett-5.55
- Eklund, Eric-4.6
- **State Closed Championship qualifiers**



2053141760
1-800-857-2254

Call Michael
Nimble
for order too

The Montana Chess Newsletter

The Montana Chess Association

INSIDE THIS ISSUE:

| | |
|---|------|
| Technology and the MCA | 2 |
| Nimsowitschian Nook | 3 |
| 1st Annual Kalispell Tournament and a new | 3 |
| Interview with webmaster, Spencer Olmsted | 4 |
| Feature game: One False Step | 5-6 |
| Upcoming Tournaments | 6, 9 |
| Errata | 9 |
| MCA Executive Board | 10 |

MONTANA STATE CHAMPIONSHIP: DUKE AND LUNDELL CO-CHAMPIONS BY: BILL MCBROOM



The 2007 Montana State Championship

David Duke and Jens Lundell tied for first place, each earning 3 1/2 points in the Montana Closed Champion-

ship. Not only do they both get bragging rights, but they are also guaranteed a seat in next year's Closed Championship. The MCA Constitution provides for a ten-person Swiss format in the event of co-champions. The other eight will be the best three grand prix finishers and the first five plus-score finishers from the 2008 Open in Billings next April in that order. The Executive Board is currently in the process of securing a site for 2008 championship event. It

will be sometime in June.

The 2007 Closed tournament, held in Butte on June 9 and 10, saw a very evenly matched field—less than 150 rating points separated the players. As might be expected considering this, no one got skunked.

Jim Skovron, finishing with three points, was in the hunt up to the last round when Mike Jensen, as White, essayed a "track-down-the-Bishop" variation of the Classical Caro-Kann

Continued on page 5

BARTO MEMORIAL A SUCCESS

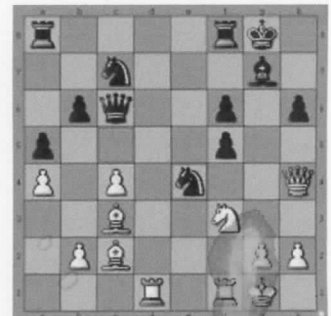


A passing traveler, Mike Corrigan from Vermont, collecting his first place prize from the Barto Memorial.

The Barto Memorial tournament, which is held concurrently with the Closed state championship, drew eight players this year. This is slightly up from previous years, said tournament director Bill McBroom, who also participated in the tournament. He hopes that advanced notice will produce even higher numbers next

year.

Michael Corrigan, visiting from Vermont, had seen the Chess Life TLA and came to play. He did well, scoring 4 1/2 for the modified first prize of \$40. With three points apiece, Thad Suits and Murray Long split the \$28 second prize.



White to play and win from Corrigan-Nguyen from round 2 of the Barto (Answer on Page 9).

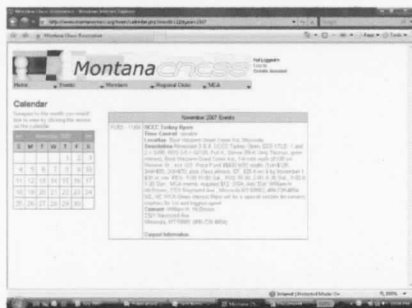


TECHNOLOGY AND THE MCA

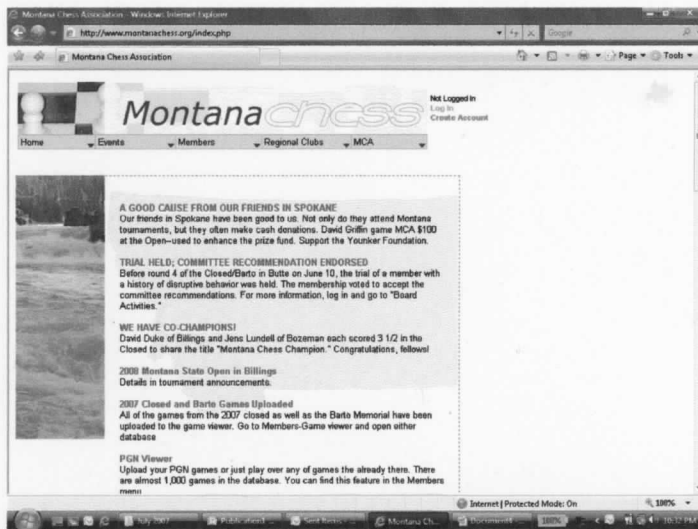
What started out as a simple idea to cut costs related to the newsletter has ballooned into a paradigm shift for the MCA. As many people know, this is the first issue of the MCN Newsletter to be distributed primarily by e-mail. The idea to switch to the e-format was looked upon with a skeptical eye at first, but when the nickels and dimes were added up, the decision was made. Throughout the entire process the executive board felt that it is important to give members the option to continue receiving a paper copy of the newsletter through the mail. Thus far, about 10 people have opted for the "snail-mail" version of the newsletter.

One of the advantages of this new format is that all newsletters will be available on the website in pdf format for anyone to download. Now that cost is not an issue, the idea is to distribute as much chess to as many people as possible. For the first time, the newsletter will be available to literally anyone who wants it.

The MCA website does more than house former issues of the newsletter, though. It contains a wealth of information on Montana chess. As soon as you hit the site, you are welcomed with current news about chess in Montana. Members of the executive board along with other selected people have the ability to update this news, so things change often. Have you played in a tournament recently? Check for your name in the current tournament reports or the tour-



A listing of upcoming tournaments



The MCA website homepage: a wealth of information for Montana chess players. Visit it at www.montanachess.org.

namment report archives.

Another critical function of the website is to provide a central location for upcoming tournaments. Again, multiple people have access to add tournament reports to this section so the content changes weekly. You will find tournaments not only from Montana, but from our friends in Washington and Idaho as well.

One of the most fascinating features of the website is the game viewer. Chess games are easily converted into what's called *pgn format*, which is a chess language that a computer can understand. Once all of the scoresheets are collected from a tournament, they are put on the website. What that means for you is that not only can you look back on some of your own games to help you improve, but you can also look for chinks in the armor of your chess nemesis.

The features named so far are those available to anyone who wander on to the site. Creating an account to log into the site, however, opens up even more options to Montana chess players once you log in. There is a button to automatically check your USCF rating. You will have access to a list of other Mon-

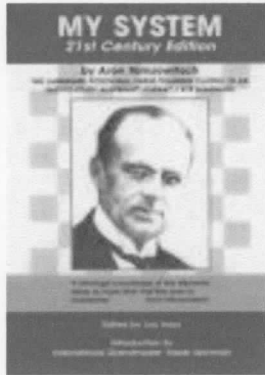
tana chess players with their contact information. There is a section called "Board Activities" available only to logged-in users with more news specific to the MCA. Creating a website account is free of charge.

It is important to point out that creating an account on the website does not make you a member of the MCA. There is a separate process for MCA membership (which can also be found on the website).

Even though we have a wonderful website, full of great features, the executive board is putting their heads together with webmaster Spencer Olmstead of Olympia, Washington, to increase functionality.

MCA president Bill McBroom comments, "My first concern, and it remains my highest priority, is to invite E.B. members and others to iterate through all the current features to see what works well and what needs tweaking ...it makes sense to me to make enhancements that will serve our members as well as we can."

The MCN will report on any new features as they are added



“...to show the student the danger lurking in indiscriminate bartering, we propose to enumerate the cases in which an exchange seems to be indicated. If an exchange does not come under one or another of these, it is bad.”

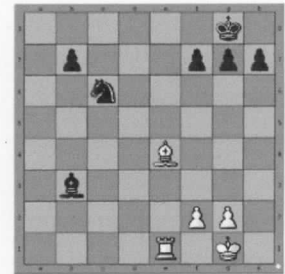
NIMSOWITSCHIAN NOOK-A FOUR PART SERIES OUTLINING WHEN ONE SHOULD TRADE PIECES AND WHEN TO CUT AND RUN ACCORDING TO CHESS GIANT, ARON NIMSOWICSH.

To trade or not to trade? That is the question that haunts many chess players at the club level. Personally, my tendency is to trade off pieces as fast as possible so as to reduce my chances of hanging one later (though I lose more than I win with that strategy). In his canonical volume “My System” Aaron Nimzowitsch spells out when a player should trade and, by process of elimination, when a player

should not. The first case:

“We exchange in order to seize (or open) a file without a loss of time.”

The figure to the right illustrates this principle simply and well. When a piece is captured, it is almost always a good idea to exact justice on the offending piece and capture it back. However, if your opponent is unable to recapture the piece due to a greater threat, you have



traded with tempo.

1. Bxc6! does not allow black to take back due to the threat of mate with 1...bxc6
2. Re8#. Definitely a good idea to trade here!

1ST ANNUAL KALISPELL CHESS TOURNAMENT

A modest six people turned out for the 1st Annual Kalispell Chess Tournament on May 19th. The tournament was held at Kalispell Christian Church, who offered the playing hall for free. The plan was to have a four round swiss-style tournament at varying time controls, but the limited number of people offered the opportunity to have a single round robin of 30 minute games. The players all agreed that five games are better than four, so the pairings were reorganized and off they went. The two ringers, Dan McCourt of Missoula and Ed McLaughlin of Anaconda (both with a rating of about 1700) faced each other in the first round. Dan mixed things up a little bit by playing 2. f4!? in response to Ed’s Sicilian defense. Unfortunately Ed’s flag fell at move 31 in a relatively equal position. From here on out Dan and Ed seemed unstoppable, beating most of the local Kalispell talent, sharing first prize with 4 points apiece and splitting the \$150 in guaranteed prize money.

But don’t get the impression that we are a bunch of slouches here in Kalispell.

The tournament drew three local players, Ray Muhm from Columbia Falls, Al Steiner from Kalispell and Adam Milligan from Somers. Ray and Al showed significant skill in the endgame under time pressure, each beating both Brett Thomas-Dejongh, from Missoula and Adam after falling behind in the middle game. And Dan’s only loss of the day came at the hands of Adam Milligan in the third round. So hopefully the Kalispell faction will be a force to be reckoned with at future tournaments.

Speaking of the Kalispell faction, the three locals have begun talking about an organized chess club in Kalispell to meet weekly. Best of luck with that!

| Player | Score |
|----------------------|-------|
| Dan McCourt | 4 |
| Ed McLaughlin | 4 |
| Al Steiner | 3 |
| Ray Muhm | 2 |
| Brett Thomas-Dejongh | 1 |
| Adam Milligan | 1 |

A CLUB IS FORMED

With a core group of four members, the Kalispell Chess Club is well on its way to being a permanent fixture in the Flathead Valley. Though summer is proving a difficult time to get something started, the club is plowing its way on.

The club so far consists of the three local players from the Kalispell tournament held in May along with Lee Huestis, also of Kalispell.

“Thus far the most difficult challenge has been figuring out a day and time that works for everyone involved,” admits club organizer Adam Milligan. Al Steiner comments, “Summer is a challenging time for such things. Fall should see things pick up.”

Currently the Kalispell Chess Club, which just sent out its USCF Affiliate application, meets every Monday evening from 6:00-9:00 at Kalispell Christian Church at 1075 Foy’s Lake Rd. in Kalispell.

For more information, contact Adam Milligan PO Box 319 Somers, MT 59932 857-3206 milligan@bresnan.net.

INTERVIEW WITH WEBMASTER SPENCER OLMSTED



Check out Spencer's work on the MCA website at: www.montanachess.org

"He spoke of a key principle in chess called "Noblization." I was fascinated that this game of kings and queens had some kind of noble order. I read books and never found anything about it. Later I realized he had said "mobilization."

The MCA has an incredible website, but how? The Montana chess news recently got in touch with MCA webmaster Spencer Olmsted for an interview about the website. We covered everything from the website to technology, Bobby Fischer, and a new concept in chess called "Noblization"!

MCN: How long have you been the webmaster for the MCA website? Did you help to create it or did you take over for someone else?

SO: I created the website in 2003 and arranged the purchase of the new domain [montanachess.org](http://www.montanachess.org). There was a previous MCA site, but because it was static and the webmaster moved away that one died. (It still exists, but holds no current info)

MCN: Do you maintain websites for a living or is this just a "hobby" of yours?

SO: I worked as a professional developer for a software consulting company for six years before I went back to school to become a teacher. My experience was mainly in web based programming languages that interfaced with databases, which is a perfect fit for the MCA's needs. After I finished my degree at MSU in Bozeman, I moved out to Olympia Washington where I got a job. I just finished my first year of teaching 5th grade today!

MCN: What is your chess background? For example: How long have you been playing? Who taught you? Do you have a favorite player and why? What is your best tournament experience? Your worst?

SO: I have been playing and studying the game on and off for about 12 years. I knew how the game was played at a younger age, but never looked deeply at it until I was a senior in college. One of my friends was teaching another and I poked my head in and began to see hidden dimensions in that tiny 8 by 8 board. He spoke of a key principle in chess called "Noblization." I was fascinated that this game of kings and queens had some kind of noble order. I read books and never found anything about it. Later I realized he had said "mobilization," so now I always teach people about noblization first.

My favorite player is Bobby Fischer because his great games are masterpieces of basic chess strategy. I also love Capablanca for similar reasons, although he seems less dynamic. I haven't studied too many recent masters, but all in good time.

My best tournament experience was my last, Joyce's January Thaw 2006 in Helena where I tied for first and played some tough games against some good opponents. I don't have a worst in mind.

MCN: Are you solely responsible for all of the content on the website or do other people write some of the content.

SO: The content is dynamic, meaning members and administrators add, update, and remove content on their own. I am solely responsible for the programming features.

MCN: What are some of the newer features on the website that MCA members may not be aware of?

SO: Alas, there is a great deal of functionality which is probably underutilized. The big one in my eyes is that the site can be used to manage membership data (expirations, ratings, and addresses) and will export member data to spreadsheets for printing. It does seem that the MCA is doing more and more with the site than they did a few years ago, so I am happy to see that.

MCN: If time, money, and expertise were not an issue at all, what additional features would you like to see on the website? Be as creative as you'd like.

SO: I would like to the features that are there used more completely, and to have more people contributing. It would be nice to have correspondence chess through the site, but why reinvent the wheel?

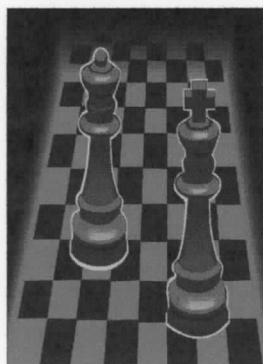
The MCN would like to offer a special thanks to Spencer Olmsted not only for the hard work and wonderful job he has done on the website, but also for taking the time to answer all of our questions. As a treat for Spencer, here is one of his impressive wins from his best tournament experience:

Spencer Olmsted-Bob Martin

Joyce's January Thaw 2006

1. e4 e6 2. d4 d5 3. exd5 exd5 4. Nf3 Nf6 5. Bg5 Be7 6. Be2 O-O 7. Nbd2 Bf5 8. O-O c6 9. c3 Nbd7 10. Re1 h6 11. Bh4 Ne4 12. Bxe7 Qxe7 13. Bd3 Rae8 14. Qc2 Ndf6 15. Nh4 Qd7 16. Nxf5 Qxf5 17. f3 Ng4 18. Bxe4 dxe4 19. fxe4 Qxe4 20. Rxe4 Qg6 21. Rae1 Re6 22. Qd1 Rfe8 23. Rxe6 Rxe6 24. Rxe6 Qxe6 25. Nf3 Qxa2 26. b3 Qb2 27. c4 g5 28. h3 Qc3 29. d5 Qe3 30. Kf1 Kf8 31. d6 Ke8 32. Qe2 Qxe2 33. Kxe2 f6 34. c5 a6 35. Nd4 Kd7 36. Nf5 h5 37. Kd3 b6 38. cxb6 c5 1-0

MONTANA STATE CHAMPIONSHIP (CONTINUED FROM FRONT PAGE)



(6. Nge2 . . . with the idea of 7. Nf4). It only takes a small error in an unfamiliar sharp-edged position to be lost: Jim soon was. At least he can have the satisfaction of finishing ahead of Mike (with 3 points, fractionally besting Mike's 2 1/2), who is last year's champ. Romie Carpenter, of Missoula, earned two points and Ana-

conda's Edward McLaughlin settled for a half point.

All of the games from the 2007 Montana State Championship have been uploaded to the MCA website at:

www.montanachess.org.

Check them out!



Jim Skovron sporting his good luck beard again.

FEATURE GAME: ONE FALSE STEP

THIS ISSUE'S FEATURE GAME SHOWS WHY JENS LUNDELL AND DAVID DUKE HAVE WHAT IT TAKES TO BE CROWNED MONTANA STATE CO-CHAMPIONS. LUNDELL PLAYS A NEARLY PERFECT KING'S INDIAN TO GAIN A CLEAR ADVANTAGE IN THE OPENING. ONE MISSED OPPORTUNITY IN THE MIDDLEGAME, THOUGH, AND DUKE PULLS A RABBIT OUT OF HIS HAT FOR A WIN.

Lundell-Duke: Round 3
2007 Montana State Championship

1. d4 Nf6 2. c4 g6 3. Nc3 Bg7 4. e4 d6 5. Nf3 O-O 6. Be2

{The King's Indian Defense}

6...Nc6 7. O-O e5 8. d5 Ne7 9. b4 Nd7 10. Be3 f5 11. Ng5 Nf6 12. f3 [Diagram 1]

{White has completely dominated the opening. He has a major space advantage which will give his pieces great mobility in the middle game. Furthermore, White has a beautiful outpost for his knight on e6. Black looks cramped and is underdeveloped on the queenside. Also, his "Indian Bishop" on g7, the best thing going for the King's Indian, is locked in and gets almost no play.}

12...a5 13. a3 h6 14. Ne6 Bxe6 15. dxe6

{This lone pawn on e6 looks like a liability for white, but in fact is not so easy to attack.}

15...c6 {removing the d5 outpost from the knight}

16. Qd2 Kh7 17. Rad1 axb4 18. axb4 Ra3 19. Qb2 Qa8?

{A blunder that should lose a pawn, but not immediately. After 20 Bc1, the Rook must move off of the 3rd rank which takes away the opportunity for the tactic that is played in the game.}

20. Rxd6 fxe4 21. fxe4 [diagram 2]

21... Rxc3!! {A great move that gets back equality in the game.}

22. Qxc3 Nxe4 23. Qd3 Rxf1 24. Bxf1 Nxd6 25. Qxd6 Nf5 26. Qd7?

{A daring sacrifice that, unfortunately, does not work. White's idea is to gain a tempo while black captures the bishop and then drive the pawn to Queenhood like he is driving a thumbtack with a sledgehammer. Black, however, has plenty of resources.}

26...Nxe3 27. e7 Qa1

{White is never able to gain the single tempo needed to queen his pawn due to the omnipresent mate threat on f1.}

28. Qd3 28...Qa8

{e4 immediately wins the game with 29. Qxe3 Bd4, winning the queen. Or, if you'd



Diagram 1: Great Opening Play



Diagram 2: Black is behind in this game. Do you see the move that will save his bacon?

like, 29 Qe2 Nxf1 30. Qxf1 Bd3+, winning the queen again. But no harm done, he finds it at the next opportunity.}

29. Qd8 {Why not take the knight?}

29...Qa1 30. Qd3 e4 [diagram 3]

{There it is! And the rest is history.}

31. Qe2 Nxf1 32. Kf2 Bd4 33. Qe3 Bxe3 34. Ke2 Qe5 0-1

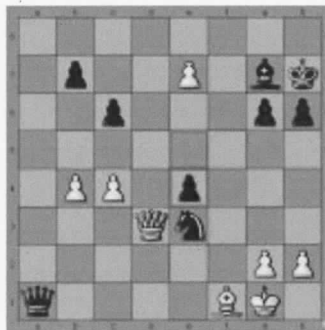


Diagram 3: Game over



Jens Lundell: In good spirits despite his 3rd round loss to David Duke.



Summer Lightning

Summer Lightning

Date/Time: July 28th Registration at 10:00-10:30

Style: Single or Double round robin depending on entries

Time Control: Game/10

Location: Spokane Valley Library 12004 E. Main St. (Take elevator to the basement) Spokane, WA 99206

Entry Fee: \$11

Prize Fund: If more than 10 people register, \$100 will be added along with other prizes. 100% of entries paid out in prizes.

Contact: David Griffin

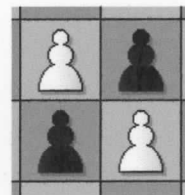
PO Box 631

Spokane Valley, WA 99037

(509) 928-3260

dbgrffn@hotmail.com

Qualchan Quads



Qualchan Quads

Date/Time: August 4th Registration 8:30-9:30

Rds. 10:00, 2:30, 7:00

Style: Single round robin for each Quad

Time Control: G/2Hr

Location: Gonzaga University Schoenberg Center Rm. 201
N. 900 Pearl Street
Spokane, WA

Entry Fee: E.F. \$16 .

Prize Fund: \$50 up for grabs in each quad.

Other: (USCF) rated & (NWGP) event.

Spokane City Contender's Championship will be taking place at this time as well at the site and continue through the 5th. The winner of the six person round-robin will face John Julian for the city Championship on Aug(17-19) during the 2007 Spokane Falls Open. This new event is replacing the Auntie's Open as the playing site was sold for office space. Coffee & snacks provided

Contact: David Griffin

P. O. Box 631

Spokane Valley, WA 99037

dbgrffn@hotmail.com

1st Spokane Falls Open

1st Spokane Falls Open

Date/Time: August 18th Registration 9:00-9:40 Rds: Sat: 10, 1:30, 5:30 Sun: 9:30, 1:30

Style: 5 Round Swiss

Time Control: G/90

Location: River Park Square W. 808 Main Spokane, WA (Kress Gallery) 3rd floor past food court.

Entry Fee: \$18 by 8/17, 18 & under \$15. \$25 at the site unrated play for free.

Prize Fund: 1st: \$100, 2nd \$60

B/2000 \$60, B/1700 \$60, B/1400 \$60

Biggest Upset: \$60 (both players must have established ratings)

Other: One 1/2 point bye can be requested for Saturday's games prior to the conclusion of the

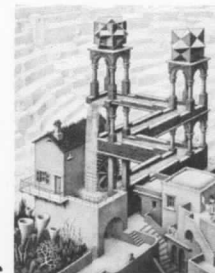
previous round. Any Sunday byes MUST be requested before the end of round three.

A special event will be taking place as John Julian will face off against a challenger TBD for the Spokane City Championship. The first game for the Spokane City Championship will take place in the Kress Gallery on Aug. 17th at 4:30. The Spokane City Championship games will all be a game in 2/Hr. event. Coffee & snacks provided

Contact: Adam Attwood
macrohistorian@gmail.com

2nd Contact: David Griffin
dbgrffn@hotmail.com
(509) 928-3260

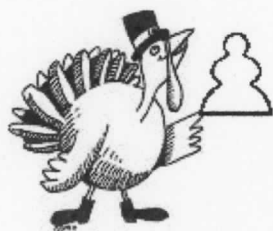
Mail entries to
David Griffin
P.O. Box 631
Spokane Valley, WA 99037



Answer to puzzle on front page:

1. Nd4! forking the Queen and the pawn on f5.

If 1...Qxc4 then 2. Bb3! pinning the Queen to the King.



The UCCC Turkey Open

UCCC Turkey Open

Date/Time: November 3 & 4.
Registration Sat: 9-10 RDS 10:30, 2:00, 6:30 Sat.; 9:00 & 1:30

Style: 5 Rd. Swiss

Time Control: Rds. 1 and 2 = G/90, RDS 3-5 = G/120; Full K; Senior (55+) Only Section, given interest

Location: Best Western Grant Creek Inn; Missoula 1/4 mile north of I-90 on Reserve St., exit 101.

Entry Fee: \$25 if rec'd by November 1. \$30 at site. REG. 9:00-10:00 Sat.; Sun.; MCA memb. required \$12. OSA, NC WCA Given interest there will be a special section for seniors, trophies for 1st and biggest upset

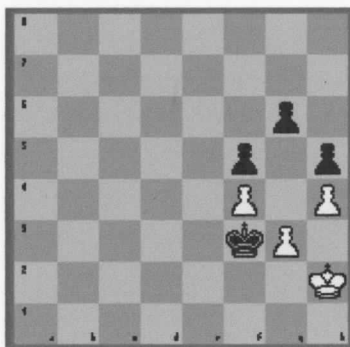
Prize Fund: \$420 b/30 adults (1st=\$120, 2nd=\$90, 3rd=\$70, plus class prizes).

Contact: William H. McBroom
2321 Raymond Ave
Missoula, MT 59801
(406.728.4654)

ERRATA

In the last issue of the MCN Newsletter there was a short article on a disputed game in the Montana Open. That article showed a diagram (right) at a critical stage of the game. I nonchalantly added the comment "Black to move-A draw is inevitable after 1...Kf2" under the diagram.

Thank you to Thad Suits of Great Falls for pointing out that after 2. Kh3 Kg1!, it



is in fact Black who wins the game since white is now forced to advance his g-pawn.

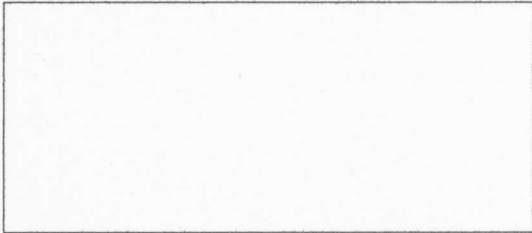
This is a good place to point out that any and all recipients of the MCN newsletter are welcome to point out errors or suggestions for future issues. E-mail any comments to Adam Milligan at milligan@bresnan.net or drop me a note the old fashioned way at PO Box 319 Somers, MT 59932

Let's make this everyone's newsletter!

Montana Chess News

Adam Milligan, Editor
PO Box 319
Somers MT 59932

Phone: (406) 857-3206
E-mail: milligan@bresnan.net



Visit the website !
www.montanachess.org



Montana Chess Association

**Promoting a love of the game in
Montana!**

THE MONTANA CHESS ASSOCIATION



From the MCA Constitution

"The purposes of the Montana Chess Association are to support interest in chess, further chess education, and promote activities that enhance members' enjoyment of the game."

Executive Board:

President:

William McBroom

Executive Vice President:

Bob Martin

Eastern Vice President:

David Duke

Western Vice President:

Adam Milligan

Secretary/Treasurer:

Dan McCourt

MCN Editor:

Adam Milligan

Current Grand Prix Standings

No Grand Prix points yet.
Look for them after the Turkey Open in November!



The Montana Chess Newsletter

THE FIRST (SORT OF) ANNUAL TRI-STATE MATCH

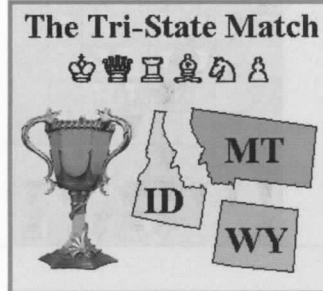
INSIDE THIS ISSUE:

| | |
|--|----|
| The MCA Abroad | 2 |
| Feature Game- Where to Draw the Line | 2 |
| Upcoming Tournaments | 5 |
| There's a new Grand Prix on the Block | 8 |
| Games of Old- A game from a previous tri-state match | 9 |
| MCA Executive Board | 10 |

Back in April, between rounds 4 and 5 of the Montana State Open, a barely noticed item on the agenda of the annual business meeting was brought before a small mob of chess players. Would Montana be interested in a tri-state match between Idaho, Wyoming and themselves? Out of the inaudible mumblings and shrugging shoulders, arose a general consensus was that there was, in fact, some interest in an event like that. Having few details, newly re-elected President Bill McBroom took it upon himself to get more information and disseminate it as it came. Since that day, there has been a fury of e-mails, phone calls, and casual conversations on the subject of a Tri-State Match. Now that the smoke has cleared and the phones have stopped ringing, the match has the green light and is on the calendar for

May of 2008!

The concept of a tri-state match between these three states is not a new one. In 1991 there was a tri-state "tournament" played in Jackson, WY. It was a Swiss System tournament and the top players from each state simply added their scores and whichever team had the most won the event. Montana won that event with 11.5 points to Idaho's 11 and Wyoming's 10.5. Jeff Roland, current President of the Idaho Chess Association, played in that tournament and recalls, "That format did nothing for the concept of a team." The feeling was apparently mutual, as the format was dropped and there wasn't another tournament like that again. In 2004, then Idaho Vice-President Barry Eacker wanted to resurrect the idea of a Tri-State Match but wanted to



The Tri-State Tournament to be held in Wyoming in early May, 2008

make it a true, board-by-board match. The three states were contacted again and the date was set. Unfortunately, Montana was not able to participate in the 2004 event, but they played it without us. Jeff Roland reminisces about the event, "Nobody really knew what to expect, but when we all arrived the camaraderie and sportsmanship of each team

Continued on Page 8

A LETTER FROM THE EDITOR

Well folks, it's been a fun ride for your humble correspondent up in Kalispell. It seems like just yesterday that I innocently contacted someone named Bill McBroom to see if there was anywhere for a guy to play chess in this neck of the

woods. Who would have thought that, just a few months later, that first e-mail would have led to me being Western Vice President of the MCA and Editor of the newsletter. But alas, every good thing must come to an end and this is the

end of my stay in Montana. I have been offered and have accepted a job in Bonner's Ferry Idaho doing what I love to do (I am a database programmer for those who are curious). For the past two years I have had the honor to be a stay-at-

home dad for my two children while my wife worked as a teacher. We've decided that it is her turn now, and so I had to get off my lazy butt and get a job. I wish you all the best of luck and leave you with this bit of advice: Never fry bacon in the nude! ☺

If anyone is interested in taking on the job of editing the newsletter for this fine chess organization, please contact the Executive Board (see website at www.montanachess.org for contact info).



THE MCA ABROAD—A LOOK AT MONTANA PLAYERS PLAYING OUTSIDE OF MONTANA



“Walter Shipman lived in the New York City area in the 70’s. He worked for the Long Island Rail Road with my aunt & uncle.” - Ed McLaughlin

If you looked at the “Upcoming Tournaments” section of the last newsletter, you might have noticed something...there was not a single tournament scheduled in Montana between the State Closed and the Turkey Open. It is during times like these that Montana chess players have a choice to make. They can either fritter away the time playing cribbage, Bridge, and (banish the thought!) checkers, or they can take up arms and leave the state for a brief sojourn to parts unknown. I have come to affectionately refer to this phenomenon as “The MCA Abroad”.

Ed McLaughlin of Anaconda got the wanderlust back in August when he caught wind of the 27th US Senior Chess Championship. Held in Palm Springs, Florida, this 6 round Swiss-style tournament regularly draws some of the country’s top rated “over 50” play-

ers. This year’s tournament was no exception. Both Jim Eade (author of “Chess for Dummies”) and Walter Shipman (who can boast a draw against Robert James Fischer himself!) played in this year’s event but were both edged out by Joel Johnson of Arizona. Ed’s first opponent was Haryinto Daud, a 2041 rated player from California. “I have never drawn or beaten an expert rated player; so I was thrilled to draw one in round 1.” As if this notch on Ed’s chess-playing belt weren’t enough, round 3 saw him beat a 2000 rated player, Dane Hinrichsen, also from California. The very next round Ed upped his total points to 2.5/4. If you’ve ever played in a Swiss-Style tournament, you know that posting numbers like that in the first four rounds puts you up against the big guns in the last two rounds. McLaughlin ended losing his last two games to finish with 2.5 points, a very respectable

score given the heavy-hitters that turned out for the event.

All chess aside, Ed and Walter Shipman had some interesting history in common. “Walter Shipman lived in the New York City area in the 70’s. He worked for the Long Island Rail Road with my aunt & uncle.” They were able to reminisce about New York, Ed’s aunt and the railroad. “I found all the players friendly, easy to talk to and eager to re-view games.”

Though this was Ed’s first Senior Open we hope it will not be his last. The next time you see Ed McLaughlin, thank him for representing Montana well both on and off the board.

For your viewing pleasure, I have included Ed’s 3rd round win against the highest rated player he has ever beaten as the “Feature Game”. Enjoy!

FEATURE GAME-WHERE TO DRAW THE LINE

WHEN A MONTANAN OFFERS A DRAW, TAKE IT!

Dane Hinrichsen (2002)
Ed McLaughlin (1700)

1. d4 d5 2. c4 e6 3. Nc3 Nf6
4. Bg5 Be7 5. e3 Nbd7 6. Nf3
- c6 7. Rc1 Ne4 [Diagram 1]

[An aggressive line in the Queen’s Gambit Declined, often utilized by Savielly Tartakower. Black is prepping for a kingside assault at the expense of his own king’s safety.]

8. Bxe7 Qxe7 9. Bd3 f5 10. O-O O-O

[Now the knight is all but immune from capture for fear

- of opening the f-file for Black’s rook]
11. Ne2 e5 12. cxd5 cxd5 13. dxe5 Nxe5 14. Nxe5 Qxe5 15. Nf4 Be6 16. Nxe6

[Not the best positional move. The white knight is controlling some important squares (namely, the weak d5 square). Black’s Bishop is acting like a big pawn. White should have kept his knight and gotten his Queen active.]

- 16...Qxe6 17. Qa4 b6 18. Qc6 Nc5? 19. Bb5? [Diagram 2]

[19. Rxc5 wins on the spot.]

- 19...Qe5 20. Be2 d4 21. Bc4+ Kh8 22. exd4 Qxd4 23. b4 Rac8 24. Qd5 Qxd5 25. Bxd5 Nd3 26. Rb1 g6 27. f4 Rfd8 [Diagram 3 next page]

[Here Ed offered a draw. Material is even and the pawn formation is symmetrical. Hinrichsen refused the draw, probably on the basis that the Black Knight appears to be trapped in the middle of the board. Ed shows him that he knew what he was talking about and that White would be the one to have to watch out for traps.]

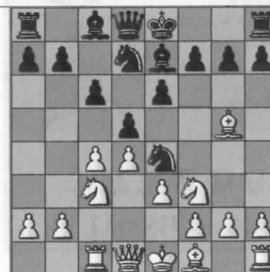


Diagram 1-Aggressive opening play

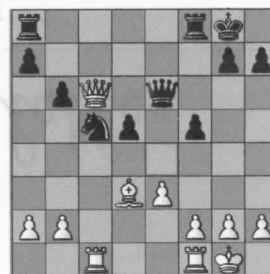


Diagram 2-Both players missed white’s winning move.

Continued on Page 5

FEATURE GAME (CONTINUED FROM PAGE 2)

28. Bb7 Rc4 29. Rbd1? [Giving away the pawn for nothing] 29...Rcd4 30. b5 Nxf4 [Diagram 4]

[This is a cool move. Not only does the board have an aesthetically pleasing symmetry to it, but all of Black's pieces are nicely defending each other and attacking White at the same time. i.e. 31. Rxf4? Rxd1+ or 31. Rxd4 Rxd4 and the knight is still covered.]

31. Rc1?

[Open files are good for rooks, however you should check for simple tactics like this one before you put them there!]

31...Ne2+ 32. Kf2 Nxc1 0-1

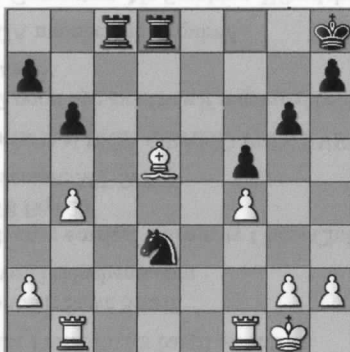


Diagram 3- Black offers a draw. Would you take it?

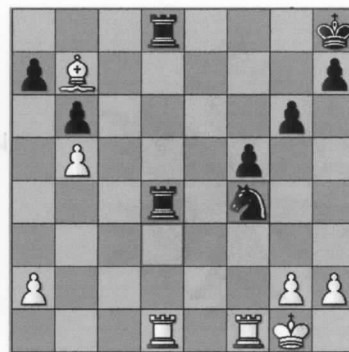
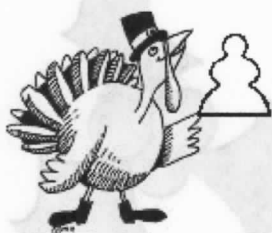


Diagram 4- An aesthetically pleasing position. All of Black's pieces are part of the action.

UPCOMING TOURNAMENTS



The UCCC Turkey Open

UCCC Turkey Open

Date/Time: November 3 & 4. Registration Sat: 9-10 RDS 10:30, 2:00, 6:30 Sat.; 9:00 & 1:30

Style: 5 Rd. Swiss

Time Control: Rds. 1 and 2 = G/90, RDS 3-5 = G/120; Full K; Senior (55+) Only Section, given interest

Location: Best Western Grant Creek Inn; Missoula 1/4 mile north of I-90 on Reserve St., exit 101.

Entry Fee: \$25 if rec'd by November 1. \$30 at site.

Prize Fund: \$420 b/30 adults (1st=\$120, 2nd=\$90, 3rd=\$70, plus class prizes).

Notes: MCA membership required \$12. OSA, NC WCA

Contact: William H. McBroom
2321 Raymond Ave
Missoula, MT 59801
(406.728.4654)

The UCCC Turkey Open Senior Section

UCCC Turkey Open Senior Section

Given sufficient interest, there will be a seniors-only section of the U.C.C.C. 2007 Turkey Open (Nov. and , Missoula; Best Western Grant Creek Inn, exit 101 of I-90)

CONDITIONS:

Any player age 55 or older (I.D. required) may elect to play in the seniors-only section. Understand that participants of this age are not obliged to play in the senior section and may elect to remain in the general Turkey Open (no changes in section allowed after the close of registration--9:45 a.m., Nov.).

Prize Fund: Plaques for Winner and biggest upset (both must have established ratings)

Contact: William Spencer
Turkey Open Assistant T.D.
2113 Cannon
Helena, MT 59601
(406.461-8851)



4th Spokane G/10 Championship

4th Spokane G/10 Championship

Date/Time: November 10th. Registration: 10:00-10:30 with rounds starting soon after.

Style: Single or Double Round Robin depending on entrants.

Time Control: Game/10

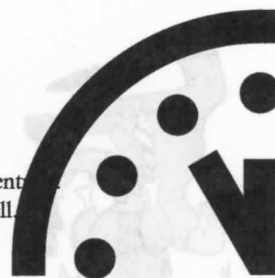
Location: Spokane Valley Library (downstairs)
12004 E. Main Spokane, WA 99206

Entry Fee: \$11

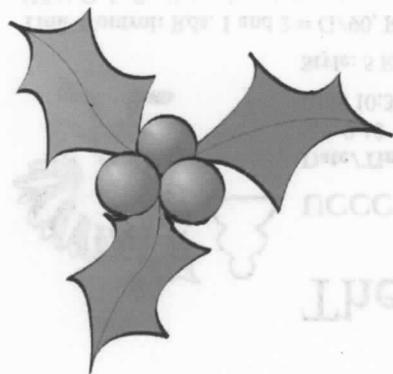
Prize Fund: \$100 for first overall with at least 10 entrants. 100% payout. Section prizes to be awarded as well.

Contact: David Griffin
(509) 928-3260
dbgrffn@hotmail.com
PO Box 631 Spokane Valley, WA 99037

Notes: Coffee and snacks provided.



The Yuletide Open



Yuletide Open

Date/Time: 12/8/07
Registration 8:30-9:00
Rounds: 9:00, 10:30, 1:00, 2:30, 4:00

Style: 5 round Swiss

Time Control: Game/45

Location: Strand Union Building
Rooms 275-276
Montana State University
Bozeman, MT

Entry Fee: \$10 if received by Dec. 6; \$20 at door; 19 & under half price.

Prize Fund: Prizes based on entries.

Contact: Steve Scarff
steve@bridgeband.com

Advance entries: University Chess Club
SUB Box 23
Bozeman, MT 59717

Notes: AN MCA GRAND PRIX EVENT!

1/2 point bye available if requested before round 3.

MCA membership required.

No Computers, No Smoking, Wheelchair access

The Midwinter Open

Midwinter Open

Date/Time: 2/2/08
Registration 8:30-9:00
Rounds: 9:00, 10:30, 1:00, 2:30, 4:00

Style: 5 round Swiss

Time Control: Game/45

Location: Strand Union Building
Rooms 275-276
Montana State University
Bozeman, MT

Entry Fee: \$10 if received by January 31st; \$20 at door; 19 & under half price.

Prize Fund: Prizes based on entries.

Contact: Steve Scarff
steve@bridgeband.com

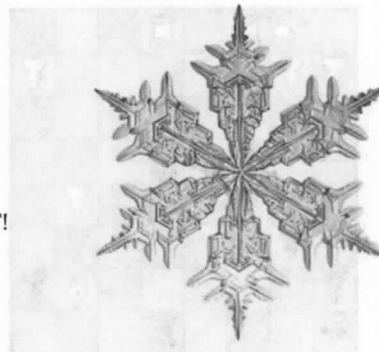
Advance entries: University Chess Club
SUB Box 23
Bozeman, MT 59717

Notes: AN MCA GRAND PRIX EVENT!

1/2 point bye available if requested before round 3.

MCA membership required.

No Computers, No Smoking, Wheelchair access



TRI-STATE TOURNAMENT (CONTINUED FROM PREVIOUS PAGE)

who have the same desire, to play great chess, has a great time, and make new friends. I look forward to meeting more Montana players and to see the Wyoming players again too. This is a great opportunity for us to make history and have fun at the same time."

So, Montana players, if you are interested in playing in this event don't dally! Idaho already has a full team of 10 player signed up and eager to take Montana to the cleaners. While May of 2008 may seem

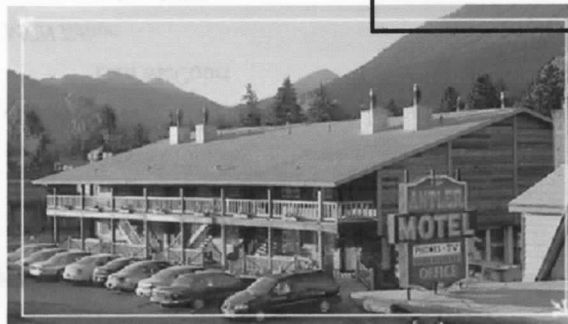
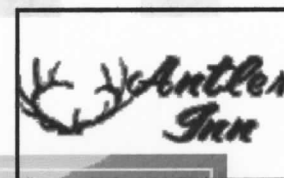
like a long way off, Jim Skovron needs to know as soon as possible what his team will look like. You can contact him via e-mail at: skovron5@hotmail.com.

For hotel accommodations, please show your appreciation to the Antler Inn for providing the playing site for free.

ANTLER INN
43 WEST PEARL
JACKSON HOLE, WY
800-822-2406

ROOM RATES - SINGLE

AND DOUBLE = \$66 / NIGHT
MENTION CHESS!



GAMES OF OLD-

TO GIVE YOU AN IDEA OF WHAT YOU'RE UP AGAINST, HERE IS A GAME FROM THE 2004 TRI-STATE MATCH.

Daniel Pocol (1641)
Ron Matous (1746)

1.d4 d6 2.Nf3 Bg4 3.e4 Nf6 4.Nc3 c6 [Diagram 1]

[They took the long way, but this has turned into an ordinary, mainline Pirc. The normal move order is 1. e4 d6 2. d4 Nf6 3. Nc3 c6 4. Nf3 Bg4]

5.Be2 e6 6.h3 Bh5 7.0-0 d5 8.exd5 cxd5 9.Ne5

[A killer outpost for that knight]

9...Bxe2 10.Qxe2 Be7

[This move loses a pawn (as you will see) but Black gets strong counterplay on the queenside, not to mention gets rid of the nasty knight on e5]

11.Qb5+ Nbd7 12.Qxb7 Nxe5 13.dxe5 Nd7 14.f4

[The first inaccuracy if the game. It is natural to want to protect the pawn, but after 14. Be3 the pawn is safe. For example: 14. Be3 Nxe5 15 Bd4 Nd7 (15...f6 16. f4 Nd7 17 Rae1 and the e6 pawn falls along with Black's game) 16. Bxg7 Rg8 17. Nb5 threatening the fork. [Diagram 2]]

14...Rb8 15.Qa6 Qc7 16.Qe2 0-0 17.Kh1 Rfc8 18.Rb1

[Underestimating the pressure down the c-file. 18. Rd1 was needed here.]

18...d4 19.Nb5 Qxc2 20.Qxc2 Rxc2 21.Nxd4 Rc4 22.Nb3 Nb6

[22...Ra4 wins the pawn back cleanly. There's no defending the a-pawn, else the knight falls.]

23.Bd2 Nd5 24.Rfc1 Rbc8 25.Na5 Rxc1+ 26.Rxc1 Rxc1+ 27.Bxc1

[All of these trades only serve to help the player with the extra pawn]

27...Nb4 28.Be3 a6 29.a3 Nd3 30.b4 Bd8 31.Nb7 Bc7 32.g3 Nb2 33.Bc1 Nc4 34.Kg2 Nb6 35.Nc5 a5 36.Kf3? [Diagram 3]

[An irrational fear of doubled pawns blows the game for white. After 36. bxa6, my silicon friend gives the following line: 36...Nd5 37. Bd2 Bb8 38. Nd7 Ba7 39. Bb4 Nc7 40. Bc5 Bxc5 41. Nxc5 Kf8 42. a6 and now the pawn will threaten to queen while the White knight picks off the pawns on the kingside.]

axb4 37.axb4 Nd5 38.Bd2 Kf8 39.Ke4 Ke7 40.f5 Nb6 41.fx6 fx6 42.Na6?

[Dropping the pawn for no reason. Bg5+ keeps the pressure and the full point.] Bxe5 43.Be3 Nc4 1/2-1/2

[After a long, hard, well-fought game, the players decide to call it a day and settle for a half point apiece.



Diagram 1—After 1.d4 d6 2.Nf3 Bg4 3.e4 Nf6 4.Nc3 c6.

Another way to play the Pirc

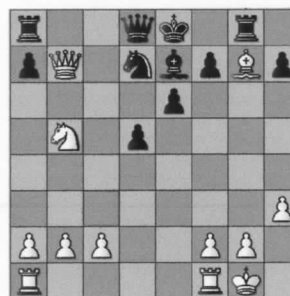


Diagram 2—The e5 pawn was safe or else this ugly position would be a harsh reality for Black.

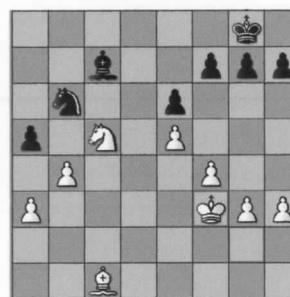


Diagram 3—After 36. Kf3?

A fear of doubled pawns is often so strong that a player will pass up the chance at gaining a free outside passed pawn with

Montana Chess News

Adam Milligan, Editor
PO Box 319
Somers MT 59932

Phone: (406) 857-3206
E-mail: milligan@bresnan.net

Visit the website!
www.montanachess.org



The Montana Chess Association

Promoting a love of the game in Montana!

THE MONTANA CHESS ASSOCIATION



From the MCA Constitution
"The purposes of the Montana Chess Association are to support interest in chess, further chess education, and promote activities that enhance members' enjoyment of the game."

Executive Board:

President:

William McBroom

Executive Vice President:

Bob Martin

Eastern Vice President:

David Duke

Western Vice President:

Adam Milligan

Secretary/Treasurer:

Dan McCourt

MCN Editor:

Adam Milligan

Current Grand Prix Standings

No Grand Prix points yet.
Look for them after the Turkey Open in November!

