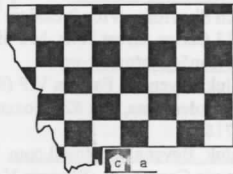


Montana Chess News



Volume 31: Issue 1 – JANUARY 2006

UPCOMING EVENTS

Joyce's January Thaw
January 28-29, 2006, Helena

MIDWINTER OPEN
FEBRUARY 4, 2006, MSU
campus, Bozeman, MT

*The 14th DAVE COLLYER
MEMORIAL*
Spokane, WA, FEBRUARY 25-
26, 2006

Mid-March Madness
March, 18-19, 2006, Missoula

71st Montana Open
APRIL 1-2, 2006 in Helena at
the Red Lion Colonial Hotel

INSIDE THIS ISSUE

PROPOSED BYLAW CHANGES

AGENDA: 2006 MCA BUSINESS MEETING

US STATE CHAMPION OF CHAMPIONS
By Haluk Beyenal

2005 YULETIDE OPEN
By Steve Scarff

GAMES FROM UCC
By Romie Carpenter

THE SATURDAY SPECIAL – BOZEMAN

THE BEST AND WORST SCORE SHEET
AWARD!!

**MONTANA CHESS ASSOCIATION
MCA BOARD MEMBERS**

Nick Doulas – President (899-4664)
523 27th St. S Great Falls, MT 59405
doulas41@bresnan.net

Jim Skovron – Vice President (771-0630)
1113 Carlos, Great Falls, MT 59404
skovron5@hotmail.com

Haluk Beyenal – Eastern V.P (994-2269)
29 Border Lane, Apt #2, Bozeman, MT
59718

Haluk_Beyenal@hotmail.com

Romie Carpenter – Western V.P

Bill McBroom - Secretary / Treasurer (728-4654)

2321 Raymond, Missoula, MT 59802

EDITOR

Haluk Beyenal

Editorial Board

Steve Scarff

Dan McCourt

Bill McBroom

Montana Chess News (MCN) is published by the Montana Chess Association, an affiliate of the U.S. Chess Federation (USCF).

Subscription and membership in the MCA is \$12/year regular, \$6/year junior (under 20), \$15 family. First time players who are also new to the USCF shall have their first year's membership fee waived.

Publishing schedule:

Issue 1: January

Issue 2: April

Issue 3: June

Issue 4: September

Issue 5: November

Deadline for submission is ten days before first day of the issue of the month.

MCA Constitution: New

During the 2005 MCA business meeting in Great Falls a number of revisions to the MCA Constitution were approved by the membership. The complete revised version is posted on the MCA web page (www.Montanachess.org).

President Doulas has asked Bill McBroom to continue as coordinator for proposals. During the next business meeting proposals will be entertained seriatim, each being considered a motion requiring a second.

PROPOSED BYLAW CHANGES*
(for consideration during the 2006 Business Meeting)

Articles of Organization

V. Annual Meeting

A. There shall be an annual meeting held in conjunction with the State Open Tournament (as described in the bylaws).

B. The agenda of the meeting will always include the election of officers and any other business to be conducted.

C. The agenda for the meeting will be published in the newsletter or posted on the MCA web page (montanachess.org) at least ten days prior to the meeting.

(Proposed by Haluk Beyenal.

Rationale: we should take advantage of the technology available to us. Whether or not one has personal access to the web, members may access the site in their local public library.)

* Proposals received earlier have been posted on the web page or published in previous issues.

AGENDA: 2006 MCA BUSINESS MEETING*

I. ANNOUNCEMENTS AND REPORTS

- A. 2006 State Closed/Barto in Helena, June 3 and 4
- B. 2007 State Open in Missoula, April 21 and 22
- C. Secretary/Treasurer's report
- D. MCN editor's report
- E. Other

II. Election of Officers

- A. President
- B. Executive Vice-president
- C. Eastern Regional Vice-President
- D. Western Regional Vice-President
- E. Secretary/Treasurer

III. OLD BUSINESS

(there is none)

IV. NEW BUSINESS

Consideration of proposals for changes in the Constitution and Bylaws

- A. changes in the seeding for the Closed to enhance the prospect of seating the strongest active players (two linked proposals by William McBroom)
 - B. Executive Board to arrange for and announce the date and site of the Closed/Barto at the same time that the State Open is publicized (proposed by William McBroom)
 - C. remove and/or substantially alter grounds for suspension/revocation of membership (proposal by Douglas Hansen)
 - D. obligation to inform membership of agenda satisfied by web page posting (proposal by Haluk Beyenal)
- [NOTE: these will be considered seriatim, each requiring a second.]

V. Good and Welfare

* Held between rounds 4 and 5 of the State Open: April 2, 2006: Red Lion Colonial Inn; Helena. Members wishing to participate in the deliberation and voting on the above proposals and other items on the agenda are advised to consult the web postings in advance of the business meeting.

US STATE CHAMPION OF CHAMPIONS

By Haluk Beyenal

50 State Champions, 1 U.S. Championship Qualifier

The America' Foundation for Chess and the Internet Chess Club organized the second State 'Champion of Champions' event, the winner has a guaranteed spot in the 64-player field battling it out for the \$250,000 U.S. Chess Championship to be held March at the NTC Promenade in San Diego. Montana was in Western conference, Zone 1. For details of the players and the tournament please visit <http://www.uschesschampionship.com/2006/news/statechampions.htm>. The tournament was a double-round all-play-all tournaments split into two zones with a time control of 3 1 (three minutes initially plus one second added per move). The games were unrated on ICC and seedings were based on USCF ratings. This year I (Haluk Beyenal) represented Montana in this tournament (current state champion Mike Jensen was not able to play). I showed very poor performance, many games ended with some blunders and lost because of flag. However, this was a nice tournament and very well organization. I had a change to talk other state champions (or qualifiers) and have some new chess friends. Below is the final results table. I selected 2 games of mine (which I did not blunder) and printed below.

Name	1	2	3	4	5	6	7	8	9	10	11	12	Score	#g	
1 CofC-NCal (2425)	xx	0=	10	11	11	11	11	11	11	11	11	1	11	19.5	21
2 CofC-Washington (2438)	1=	xx	=	11	11	00	11	11	11	11	11	i	11	18.5	20
3 CofC-Oregon (2337)	01	=	xx	00	11	10	=	1	11	11	11	i	11	16.5	20
4 CofC-Nebraska (2228)	00	00	11	xx	01	11	10	1=	11	11	i	11	15.5	20	
5 CofC-Alaska (2239)	00	00	00	10	xx	10	11	11	11	01	1	11	13.0	21	
6 CofC-Wyoming (2090)	00	11	01	00	01	xx	01	=	0	10	11	1	11	12.5	21
7 CofC-NoDakota (2148)	00	00	=	01	00	10	xx	11	11	=	1	1	11	12.0	21
8 CofC-Idaho (2011)	00	00	00	0=	00	=	1	00	xx	10	11	0	11	8.0	21
9 CofC-Wisconsin (1981)	00	00	00	00	00	01	00	01	xx	1=	0	11	6.5	21	
10 CofC-Montana (1802)	00	00	00	00	10	00	=	0	00	0=	xx	i	11	6.0	20
11 CofC-Iowa (2134)	0	o	o	o	o	0	0	0	1	1	o	xx	1	3.0	7
12 CofC-SoDakota (1821)	00	00	00	00	00	00	00	00	00	00	00	0	xx	1.0	21

(10) CofC-Alaska (2239) - CofC-Montana (1802) [D43]

ICC tourney 696 (3 1 u) Internet Chess Club (9), 20.11.2005
 1.c4 Nf6 2.Nc3 c6 3.Nf3 d5 4.d4 e6 5.g3 Bd6 6.c5 Bc7 7.Bg2 Nbd7 8.Bf4 Bxf4 9.gxf4 b6 10.b4 a5 11.a3 Ba6 12.0-0 0-0 13.Re1 Bc4 14.Ne5 axb4 15.axb4 Rxa1 16.Qxa1 Nxe5 17.fxe5 Ng4 18.h3 Nh6 19.Qa7 b5 20.e3 f5 21.f4 Qh4 22.Qa1 g5 23.fxg5 Qxg5 24.Qc1 f4 25.exf4 Qxf4 26.Qxf4 Rxf4 27.Rd1 Nf5 28.Rd2 Rxd4 29.Rf2 Rd3 30.Ne2 Rd1+ 31.Kh2 Rd2 32.Bf3 Bxe2 33.Bxe2 Nd4 34.Rg2+ Kf8 35.Bg4 Rxg2+ 36.Kxg2 Ke7 37.Kg3 Nc2 38.Kh4 Nxb4 39.Kh5 Nd3 40.Kh6 Nxe5 41.Bd1 Nd3 42.Kxh7 Nxc5 43.h4 Ne4 44.h5 Nf6+ 45.Kg6 c5 46.h6 c4 47.h7 Nxh7 48.Kxh7 b4 49.Kg6 Kd6 50.Kf6 b3 51.Kg5 d4 52.Kf4 Kd5 53.Kf3 c3 54.Ke2 54...Kc4 0-1

(22) CofC-Wisconsin (1981) - CofC-Montana (1802) [C42]

ICC tourney 696 (3 1 u) Internet Chess Club (22), 20.11.2005
 1.e4 e5 2.Nf3 Nf6 3.Nxe5 d6 4.Nxf7 Kxf7 5.d4 g6 6.Nc3 Bg4 7.f3 Bd7 8.Bg5 h6 9.Bh4 g5 10.Bf2 Bg7 11.Bc4+ Be6 12.Bxe6+ Kxe6 13.Qd2 Re8 14.0-0-0 Kf7 15.Rhf1 Nc6 16.f4 g4 17.e5 Ng8 18.d5 dxe5 19.dxc6 Qxd2+ 20.Rxd2 bxc6 21.fxe5 Bxe5 22.Bh4+ Kg6 23.Ne4 Bxb2+ 24.Kxb2 Rxe4 25.Rd7 Rb8+ 26.Kc3 Re6 27.Rxc7 Nf6 28.Rd1 Nd5+ 29.Rxd5 cxd5 30.Bg3 Ra8 31.Rd7 Ra6 32.Rxd5 Rxa2 33.Rd7 Rc8+ 34.Kb3 Rxc2 35.Rd6+ Kf5 36.Rd5+ Ke4 37.Re5+ Kd3 38.Rd5+ Ke4 39.Re5+ Kd3 40.Rd5+ Ke4 41.Re5+ Kd3 42.Rd5+ Ke4 43.Re5+ Kd3 Game drawn by repetition (Haluk had 1 sec) ½-½

**2005 YULETIDE OPEN
By Steve Scarff**

December 3rd was the date for the 2005 Yuletide Open. This annual Bozeman event was unusual in a couple of ways this year. It may have been the first time in MCA history that all participants preregistered for an open tournament, so there was no registration jam to delay the start. However, there were only three players! This made the advertised five round Swiss out of the question, so after some discussion it was agreed to use the double round robin format and to stick with the Game/30 time control. Although this meant playing six rounds, with only one game per round the tournament finished ahead of schedule. Round one saw the biggest upset when Michael Long beat Jens Lundell. Long was upset in the next round by Scarff. These were the only upsets of the tournament, so Lundell won the first place trophy by beating Scarff twice. All participants agreed this was an enjoyable tournament, and with two byes each there was plenty of time to relax, watch the other players compete, and grab some lunch.

Yuletide Open - December 3, 2005 - Bozeman, MT

#	Name	Rtng	Rd 1	Rd 2	Rd 3	Rd 4	Rd 5	Rd 6	Tot
1	Jens O Lundell	1824	L3	U---	W3	W2	U---	W3	3.0
2	Michael J Long	1600	W2	L3	U---	L1	W3	U---	2.0
3	Steven R Scarff	1520	U---	W2	L1	U---	L2	L1	1.0

(1) Long,Michael (1600) – Lundell,Jens (1823) [B07]

Yuletide Open Bozeman, MT (1), 03.12.2005

1.e4 d6 2.d4 Nf6 3.Nc3 g6 4.Bc4 Bg7 5.Nge2 0-0 6.h3 c6 7.a3 b5 8.Ba2 Bb7 9.0-0 Nbd7 10.Be3 a6 11.Qd2 c5 12.d5 Qc7 13.Ng3 c4 14.Rad1 Nc5 15.b4 cxb3 16.cxb3 h5 17.b4 h4 18.bxc5 hxg3 19.c6 gxf2+ 20.Rxf2 Bc8 21.Bb1 e6 22.Ba2 exd5 23.Bxd5 Qa5 24.c7 Nxd5 25.Nxd5 Qxd2 26.Bxd2 Bd4 27.Be3 Bxe3 28.Nxe3 Be6 29.Nd5 Ra7 30.Rc2 Rc8 31.Ne7+ Kg7 32.Nxc8 Bxc8 33.Rxd6 Rb7 34.Rd8 Be6 35.c8Q Bxc8 36.Rcxc8 a5 37.Rb8 resigns 1-0

(2) Scarff,Steve (1517) – Long,Michael (1600) [D00]

Yuletide Open Bozeman, MT (2), 03.12.2005

1.d4 Nf6 2.f3 d5 3.e4 dxe4 4.Nc3 exf3 Although the move order is a bit unusual, Michael has accepted the Blackmar–Diemer Gambit! 5.Nxf3 Bd7 6.Ne5 Nc6 7.Bc4 Nxe5 8.dxe5 Ng4 9.Bf4 Bf5 10.Qe2 Qd4 11.Rf1 Qb6 12.0-0-0 e6 13.h3 Nh6 14.g4 Bb4 15.Bxh6 gxh6 16.gxf5 Bxc3 17.bxc3 Qc5 18.fxe6 Qa3+ 19.Kb1 fxe6 20.Qh5+ resigns 1-0

(3) Lundell,Jens (1823) – Scarff,Steve (1517) [E38]

Yuletide Open Bozeman, MT (3), 03.12.2005

1.d4 Nf6 2.c4 e6 3.Nc3 Bb4 4.Qc2 c5 5.dxc5 Bxc5 6.Nf3 Qb6 7.e3 Bb4 8.Bd3 Nc6 9.0-0 Qa5 10.Bd2 Ne5 11.Nxe5 Qxe5 12.Nb5 Bd6 13.Nxd6+ Qxd6 14.c5 Qc6 15.b4 b5 16.f3 Bb7 17.a4 a6 18.axb5 axb5 19.Rxa8+ Bxa8 20.Ra1 0-0 21.e4 g6 22.Bh6 Re8 23.Qe2 e5 24.Bxb5 Qe6 25.Ra6 Qe7 26.Bg5 Bc6 27.Bxc6 Rb8 28.Ra8 Rxa8 29.Bxa8 resigns 1-0

(4) Lundell,Jens (1823) – Long,Michael (1600) [A57]

Yuletide Open Bozeman, MT (4), 03.12.2005

1.d4 Nf6 2.c4 c5 3.d5 b5 4.cxb5 a6 5.Nc3 axb5 6.e4 d6 7.Bxb5+ Bd7 8.Be2 g6 9.f4 Bc8 10.Nf3 Ba6 11.Qa4+ Nbd7 12.Bxa6 Qb6 13.Qc6 Qxa6 14.Nb5 Qc8 15.Nc7+ Kd8 16.Qxa8 Kxc7 17.Qa5+ Nb6 18.Nd2 Qa8 19.Qxa8 Nxa8 20.b3 Bg7 21.Bb2 Rb8 22.Nc4 Nb6 23.Nxb6 Rxb6 24.Bxf6 Bxf6 25.Rc1 Rb4 26.Rc4 Rb6 27.Ra4 flag 1-0

(5) Long, Michael (1600) – Scarff, Steve (1517) [A00]

Yuletide Open Bozeman, MT (5), 03.12.2005

1.e4 e6 2.d4 d5 3.e5 c5 4.c3 Bd7 5.Nf3 Nc6 6.Be2 f6 7.Bf4 Qb6 8.Qd2 Nce7 9.0-0 Ng6 10.Bg3 Be7 11.h4 Bd8 12.h5 N6e7 13.b3 Nh6 14.exf6 gxh6 15.Qxh6 Nf5 16.Qd2 Nxc3 17.fxc3 Rg8 18.Qh6 Be7 19.Qxh7 0-0 20.Qxe7 Rxc3 21.Qxc5+ Qxc5 22.dxc5 Rdg8 23.Rf2 e5 24.Kh2 e4 25.Nh4 f5 26.Ng6 Rg5 27.Ne7+ resigns 1-0

(6) Scarff, Steve (1517) – Lundell, Jens (1823) [B08]

Yuletide Open Bozeman, MT (6), 03.12.2005

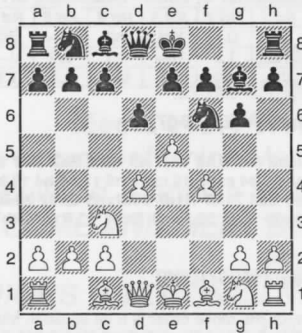
1.d4 g6 2.e4 Bg7 3.Nf3 d6 4.Bc4 Nf6 5.Nc3 0-0 6.0-0 Nc6 7.Be3 Nxe4 8.Nxe4 d5 9.Bxd5 Qxd5 10.Qd3 Bf5 11.Nfd2 Nxd4 12.c3 Nf3+ resigns 0-1

**GAMES FROM UCC
By Romie Carpenter**

(1) Dan McCourt (1660) – Romie Carpenter

(1805) [B07] November Swiss, 05.11.2005

1.e4 d6 2.d4 Nf6 3.Nc3 g6 4.f4 Bg7 5.e5 Diagram



This is considered to be somewhat premature, but it's still dicey which shows the potential of the e5 push in the Pirc...Nfd7 6.Nf3 c5 7.e6 fxe6 8.Ng5 Nf6 9.dxc5 0-0 10.Bc4 Diagram



My book shows 10.cd6 ed6 =.10...d5 11.Bb3 Na6 12.Qe2 Nxc5 13.Be3 Nxb3 14.axb3 Nh5 15.g3 d4 16.Rd1 Qb6 17.Na4 Qc6 18.0-0 dxe3 19.Qxe3 b6 20.Rfe1 e5 21.fxe5 Bb7 22.Qe4 Qxe4 23.Nxe4 Rad8 24.Ng5 Bc6 25.Nc3 Rxd1 26.Nxd1 Rd8 27.Ne6 Rd2 28.Ne3 Bxe5 29.Nc4 Rg2+ 30.Kf1 Bf6 31.Re2 Rxe2 32.Kxe2 Bd5 0-1

2) Mike Jensen (1829) - Bill McBroom (1577) [A11]

M-B Open, 30.08.2005

1.c4 c6 2.g3 d5 3.Bg2 Nf6 4.Nf3 dxc4 5.0-0 Bf5 6.a4 e6 7.Na3 Bxa3 8.Rxa3 0-0 9.Nh4 Be4 10.f3 Qb6+ 11.Kh1 Bg6 12.Nxg6 hxg6 13.Qc2 Qb4 14.Rc3 b5 15.axb5 cxb5 16.f4 Nd5 17.b3 Nc6 18.bxc4 Nxc3 19.Bxc6 Rac8 20.dxc3 Qxc4 21.Be4 Qxc3 22.Qxc3 Rxc3 23.Bd2 Rb3 24.Bd3 Rd8 25.Ra1 Rbx3 26.exd3 Rxd3 27.Bb4 Rb3 28.Bc5 b4 29.Bxa7 Ra3 30.Rxa3 bxa3 31.Kg2 a2 32.Bd4 f6 33.Kf3 Kf7 34.Ke4 Ke7 35.Ba1 Kd6 36.Kd4 Kc6 37.Kc4 Kd6 38.g4 e5 39.fxe5+ fxe5 40.Kd3 Kd5 41.Ke3 g5 42.Bb2 g6 43.Ba1 e4 44.Bb2 Kc4 45.Kxe4 Kb3 46.Bd4 Kc4 47.Ba1 Kb3 48.Ke5 Kc2 49.Ke6 1-0

(3) Dan McCourt (1660) – Mike Jensen (1823) [B21] 1St. Sept. Open, 05.09.2005
 1.e4 c5 2.f4 Nc6 3.Nf3 g6 4.Be2 Bg7 5.c3 d5 6.exd5 Qxd5 7.Na3 Nf6 8.Nb5 Qd8 9.0-0 a6 10.Na3 Who's counting tempi?10...0-0 11.Nc2 Qc7 12.d3 Rd8 13.Ne3 Qxf4 14.Nd5 Qd6 15.Nb6 If my count is correct, that's 6 moves with this N.15...Rb8 16.Nxc8 That's 7. 16...Rbxc8 17.Qa4 Nd5 18.Qh4 f6 19.Bd2 e6 20.Rae1 Nce7 21.g4 21...Rf8 22.Bd1 b5 23.d4 Nc6 24.dxc5 Qxc5+ 25.Kg2 e5 26.Bb3 Na5 27.Be3 Qc6 28.Bxd5+ Qxd5 29.Qf2 Nc4 30.Bc1 Rfd8 31.b3 Nd6 32.Rd1 Qe6 33.h3 Ne4 34.Rxd8+ Rxd8 35.Qc2 Nc5 36.Rd1 Rxd1 37.Qxd1 Qd7 38.Qg1 Bf8 39.Ba3 Qd5 40.Qe3 Nd3 41.Bxf8 Nf4+ 42.Kg3 Kxf8 43.Ne1 And with a very good position, Black's flag fell. 0-1

(6) Romie Carpenter (1800) – Mike Jensen (1829) [E62] November Swiss, 05.11.2005
 1.d4 Nf6 2.Nf3 g6 3.c4 Bg7 4.g3 0-0 5.Bg2 d6 6.0-0 c6 7.Nc3 Qa5 8.a3 Qh5 9.Re1 Bh3 White's fianchettoed bishop seems to be the center of attention for both sides.10.Bh1 Bg4 11.Nh4 Na6 12.f3 Bh3 13.e4 Qa5 14.Be3 Qd8 15.Qd2 e5 16.Rad1 Qe7 17.b4 Nc7 18.Qf2 exd4 19.Bxd4 Be6 20.c5 d5 21.exd5 Ncxd5 22.Nxd5 Nxd5 23.Bxg7 Kxg7 24.f4 Qf6 25.Nf3 Qc3 26.Qd4+ Qxd4+ 27.Nxd4 Bg4 28.Rd2 Rfe8 29.Rxe8 Rxe8 30.Kf2?? This shows the price of bigotry for Bishops over Knights. White's Bishop is doing nothing & doesn't appear to have much of a future, while Black's Knight is about to become a powerhouse. With 30.Bd5 cd5 31. Nb5, I think White should have a clear advantage. Instead, he loses quickly.30...Nc3 31.Bf3 Bxf3 32.Nxf3?? Ne4+ 0-1

(4) Bill McBroom (1577) – Mike Jensen (1829) [B31] 1St. Oct. RR, 04.10.2005
 1.e4 c5 2.Nf3 Nc6 3.Bb5 g6 4.0-0 Bg7 5.c3 e5 6.Bxc6 In an article on doubled pawns in the May 2005 issue of Chess Life, IM Larry Kaufman noted that while this exchange in the Ruy Lopez is not advantageous for White, here it is because Black's pawn is on c5 rather than c7. This difference makes the resulting doubled-pawn complex significantly weaker.6...dxc6 7.Na3 Ne7 8.Nc4 Bg4 9.h3 Bxf3 10.Qxf3 0-0 11.Qe3 b5 This move gives Black 2 weak pawns, which according to IM Kaufman should normally be attacked.12.Na3 Qd6 13.Nc2 Rad8 14.b4 cxb4 15.Nxb4 a5 16.Na6 Ra8 17.Nc5 Rfb8 18.Rd1 f5 19.Nb3 f4 20.Qc5 Qe6 21.Bb2 Bf8 22.d4 a4 23.Nd2 Bg7 24.Nf3 exd4 25.Nxd4 [25.cxd4 Qxe4 26.Re1] 25...Qf6 26.Nf3 Nc8 27.Rd2 Bf8 28.Qe5 Qxe5 29.Nxe5 Nb6 30.Rd3 Looks to me like 30.Nc6 wins material but maybe I'm missing something.[30.Nxc6 a3 (30...Nc4 31.Rc2 Rc8 32.Nd4) 31.Nxb8 axb2 32.Rxb2 Rxb8 33.Rxb5] 30...c5 31.Rad1 Bg7 32.Nc6 Re8 33.f3 Rac8 34.Na7 ½-½

(5) Mike Jensen (1829) – Dan McCourt (1660) [A20] 1St. Oct. RR, 11.10.2005
 1.c4 e5 2.g3 d6 3.Bg2 f5 4.Nf3 I'm not familiar with this line, but I suspect e3 & Ne2 might be a better way for White to counterattack Black's center.4...Nf6 5.0-0 Be7 6.Nc3 0-0 7.d3 Nc6 8.Rb1 Qe8 9.b4 Qh5 10.e3 g5 11.b5 Nd8 12.Nd5 Nxd5 13.cxd5 13...Nf7 14.Bd2 g4 15.Ne1 Ng5 16.f4 exf4 17.exf4 Nh3+ 18.Bxh3 Qxh3 19.Bc3 Bd7 20.Qe2 Rf7 21.Qg2 Qh6 22.Nc2 a6 23.Nd4 Bf6 24.Rfc1 Bxd4+ 25.Bxd4 Bxb5 26.Qc2 c5 27.Ba1 Re7 28.Re1 Rae8 29.Qc3 Kf7 30.Rxe7+ Rxe7 31.Qd2 Qf8 32.Qc3 Kg6! 33.Re1 Qf7 34.Rxe7 Qxe7 35.Kf2 Qf7 36.Qe1 Bxd3 37.Qe6+ Qxe6 38.dxe6 Bc4 39.e7 Kf7 40.Bf6 Bxa2 41.Ke3 Bd5 42.Kd3 And Black won after several more moves. 0-1

THE SATURDAY SPECIAL – BOZEMAN

By Haluk Beyenal

When there is no MCA event Bozeman players meet and play G25/5 Saturdays. The playing site is Food Coop of Bozeman. The details of tournament and dates are posted on www.montanachess.org.

The results of December 7, 2006 Saturday special. Congratulations to Lundell!!

#	Name	1	2	3	4	5	Tot
1	Jens Lundell	W2	W3	---	W4	W5	4.0
2	Spencer Olmsted	D4	---	W3	W5	L1	2.5
3	Haluk Beyenal	---	L1	W4	L2	W5	2.0
4	Stephen Fusselman	D2	W5	L1	L3	---	1.5
5	Steve Scarff	L1	L2	L3	---	L4	0.0

UNIVERSITY CHESS CLUB



BOZEMAN

2005-2006 school year

Meets every Wednesday at 7:00 p.m.

NW corner of Union Market dining area, Strand Union Building, Montana State University, Bozeman, MT

COME AND MEET BOZEMAN'S FINEST CHESS PLAYERS

JUNIORS WELCOME!! NO MEMBERSHIP FEES, OPEN TO PUBLIC

Electric City Checkmates Chess Club

Meets every Monday evenings at 6:30

West gate Mall

No entry fees; refreshments served. Bring your equipment if you have it

Info: 1-406-717-5968, e-mail: kirk123L@aol.com

THE BEST AND WORST SCORE SHEET AWARD!!

Do you want to win worst score sheet award and have your picture posted here?

UPCOMING EVENTS

For newest information and updates visit www.montanachess.org

Joyce's January Thaw January 28-29, 2006, Helena

An MCA Grand Prix Event

Time Control: G/90

Location: Colonial Inn, ph. 800-Red Lion \$63sgl \$69 dbl
2301 Colonial Drive, Helena, MT

Five rounds, Swiss pairings, MCA Grand Prix event

Reg: 10:15-10:45

Rds: 11, 2:30, 7pm...9am, 12:30

EF: \$25 by Jan 27, \$30 at site Jrs at 1/2

Prizes: \$\$b/\$300 entries, 1st \$50, 2nd \$30, 3rd \$20, Awards to top two juniors, \$20 each to Top 1400-1599, Top 1100-1399, Top UNR-1099, \$20 Top Upset (both players non-prov)

Entries and information: Mel Drake (no phone entries, please)

Contact: Mel Drake, 5950 Canyon Ferry Road, Helena, MT 59602 Phone..406-475-3481

MIDWINTER OPEN

FEBRUARY 4, 2006, Bozeman

An MCA Grand Prix Event

Time Control: Game/45

Location: Room 106E Strand Union Building, Montana State University campus, Bozeman

Description: MCA Grand Prix event, 5 round Swiss

Entry Fee: \$10 if received by 2/2; \$20 at site; 19 & under half price.

Registration: 9:00-9:20am.

Rounds: 9:30, 11:00, 1:30, 3:00, 4:30 or ASAP.

Trophies for 1st, 2nd, U1600, U1200/Unrated, Biggest Upset.

Half point byes must be requested before round 2.

Ratings: Regular ratings to be used for pairings. Results will apply to both Regular and Quick ratings.

Wheelchair access, no smoking, no computers.

Contact: Steve Scarff, steve@bridgeband.com or 406-586-4479 (no phone entries).

Advance entries payable to University Chess Club, SUB Box 23, Bozeman, MT 59717

The 14th DAVE COLLYER MEMORIAL FEBRUARY 25-26, 2006

The Spokane Chess Club and the Gary Younker Foundation, in memory of former presidents Dave Collyer and Gary Younker, proudly present the Fourteenth Dave Collyer Memorial tournament.

Location: Room 201, Schoenberg Center, Gonzaga University. N. 900 Pearl Street, Spokane. A computer-paired, five-round Swiss System event. Registration: 8:30-9:30, February 26, 2005. **Mandatory player meeting** at 9:45.

Rounds: 10 (or 12)-2:30-7; 9-1:30 or ASAP. Time control: Game/120. Entry fee: \$27 if received by 2/24, \$33 at the door; under 19 \$5 less. Telephone entries accepted. All registrants must check in by 9:30 unless a first-round bye was granted or player is playing in the "sleep in" section. Late arrivals might not be paired in first round.

Special "Sleep In" option. Anyone interested in sleeping in can play their round one game commencing at noon under g/60 time control and join the regular event for round two. A Christopher Grand Prix Event. **\$1600 GUARANTEED prize fund.** Class prizes based on at least 5 per class; classes may reconfigured if less than five class entries. Only one prize per player (excluding biggest upset). NS, NC, W. One ½-point bye available if requested by end of preceding round; Sunday bye must be requested by end of round 3. Director reserves right to use class pairings in final round. Coffee and cookies provided.

PRIZES: FIRST -- \$325, SECOND -- \$200, THIRD -- \$125, Class Prizes: Top Expert \$100, \$100 first, \$75 second: A; B; C; D/E/unrated. Biggest Upsets: \$100 & \$50 (non-provisional ratings).

Entries: Spokane CC, c/o Kevin Korsmo, N. 9923 Moore, Spokane, WA 99208-9339. For information please call (509) 466-0530 evenings or weekends; (509) 477-2871 days. Check our website for updates & directions: www.spokanechessclub

FEBRUARY 25 --- Simul and Talk at Aunties Bookstore (W. 402 Main Avenue, Spokane) **6:00 p.m.**— IM John Donaldson talk (2nd floor)

6:45 p.m.— Donaldson Simul (Liberty Café – 1st floor)

Mid-March Madness March 18 & 19, Missoula, 2006

An MCA Grand Prix Event

Time Control: G90-G120

Location: University of MT. LA rm. 325

5rd Swiss the weekend of March 18&19. It'll be at the University of MT. LA rm. 325. Registration 9:00-9:30, rounds @ 10:00, 2:00, 6:00, 9:30, 2:30 or ASAP. rds. 1&2 are G90 & rds. 3-5 are G120. 1st. \$100, 2nd \$75, U1800 \$50, U1600 \$50, U1400 \$50 & biggest upset \$50, based on 20 entries. Biggest upset must not be with provisional ratings. At least 2 players must be eligible for each class prize. Juniors ½ price. MCA required, other states OK. A Grand Prix event. NS, NC, NW, no phone entries. EF \$20 if received by 4/17, \$25 at door. Mail to: Romie G. Carpenter, 1903 S. Clark, Missoula, MT 59801

Info: 406-542-8064, romie@bresnan.net

Contact: Romie G. Carpenter, 1903 S. Clark, Missoula, MT 59801, 406-542-8064, romie@bresnan.net

71th Montana Open

April 1 -2, 2006, Red Lion Colonial Hotel, 2301 Colonial Drive; Helena, Montana

An MCA Grand Prix Event

EF: \$30 by April , \$35 at the door; juniors (under age 19) half price

Format: 5 R SS, Game in 120 (insufficient losing chances rule in effect); Full K

On-site Registration: 9:00 a.m.-9:30 a.m., mandatory players' meeting 9:50 a.m.

Rounds: Saturday, 10:00 a.m., 2:30 p.m., and 7:00 p.m.; Sunday 9:00 a.m., 2:00 p.m. (or A.S.A.P.)

Prizes: (based on 30 paid adults) 1st=\$150, 2nd=\$75, 3rd=\$50, best A=\$40, best B=\$30, biggest upset (both must have established ratings)=\$20, and trophies top senior (age 55+) and junior (under age 19)

Entries/Information: Nick Doulas; 523-27th Street, South., Great Falls, MT 59405;

1.406.899.4664 /doulas41@bresnan.net; checks payable to MCA.

Misc.: No phone entries, no computers, no smoking, no wheel chair access

2006 MONTANA CLOSED CHAMPIONSHIP AND BARTO MEMORIAL

Where: Red Lion Colonial Hotel, 2301 Colonial Drive; Helena, Montana

When: June 3 and 4, 2006

EF: \$25 by May 28, \$30 at the door; juniors (under age 19) half price

Format: 5 R SS, Game in 120 (insufficient losing chances rule in effect); Full K

On-site Registration: 9:00 a.m.-9:30 a.m., mandatory players' meeting 9:50 a.m.

Rounds: Saturday, 10:00 a.m., 2:30 p.m., and 7:00 p.m.; Sunday 9:00 a.m., 2:00 p.m. (or A.S.A.P.)

Prizes: Championship Section (no EF for qualifiers)= Plaque for champion
Barto: (based on 15 paid adults) 1st=\$75, 2nd=\$50

Entries/Information: William H. McBroom, 2321 Raymond; Missoula, Montana
(406.728.4654) checks payable to MCA.

Misc.: No phone entries, no computers, no smoking, no wheel chair access



Joyce's January Thaw
January 28-29, 2006, Helena

An MCA Grand Prix Event

MIDWINTER OPEN

FEBRUARY 4, 2006, MSU campus, Bozeman, MT

An MCA Grand Prix Event

The 14th DAVE COLLYER MEMORIAL

Spokane, WA, FEBRUARY 25-26, 2006

Mid-March Madness

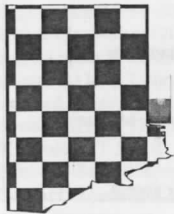
March, 18-19, 2006, Missoula

An MCA Grand Prix Event

71st Montana Open

APRIL 1-2, 2006 in Helena at the Red Lion Colonial Hotel

An MCA Grand Prix Event



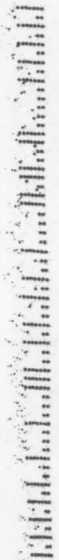
Haluk Beyenal

Editor

Montana Chess Association

29 Border Lane, Apt #2

Bozeman, MT 59718



33718+AA16-02 R100

Montana Chess News



Volume 31: Issue 2 – May 2006

UPCOMING EVENTS

13th GREATER
NORTHWEST TEAM
TOURNEY
May 20 Saturday, 2006,
Missoula

2006 MONTANA
CLOSED
CHAMPIONSHIP AND
BARTO MEMORIAL
June 3 and 4, 2006, Helena

THE 2006 TURKEY
OPEN
November 4 and 5, 2006,
Missoula

INSIDE THIS ISSUE

NOTES OF THE 2006 MCA BUSINESS
MEETING 2
MCA WEB PAGE 3
MCA GAMES ARE ON THE WEB PAGE 4
JANUARY THAW, 2006 5
Montana Junior Championship 7
Bozeman Spring Scholastic: K-4 Standings 7
Bozeman Spring Scholastic: 5-8 Standings 7
Midwinter Open - February 4, 2006 - Bozeman,
MT 8
GRAND PRIX 2005-2006 8

**PLEASE FILL OUT THE SURVEY FORM AND RETURN IT TO MCA!
MCA WEB PAGE, www.montanchess.org, IS
CONSTANTLY UPDATED. ARE YOU?**

MCA EXECUTIVE BOARD, 2006-2007

William McBroom, President
2321 Raymond Avenue
Missoula, Montana 59802
406.728.4654

James Skovron, Executive Vice President
1113 Carlos
Great Falls, MT 59404
406.771.0630
skovron5@hotmail.com

Robert Martin, Eastern Vice President
Romie Carpenter, Western Vice President
Daniel McCourt, Secretary Treasurer

EDITOR

Haluk Beyenal

Editorial Board

Steve Scarff
Dan McCourt
Bill McBroom

Montana Chess News (MCN) is published by the Montana Chess Association, an affiliate of the U.S. Chess Federation (USCF). Subscription and membership in the MCA is \$12/year regular, \$6/year junior (under 20), \$15 family. First time players who are also new to the USCF shall have their first year's membership fee waived.

Publishing schedule:

Issue 1: January

Issue 2: April

Issue 3: June

Issue 4: September

Issue 5: November

Deadline for submission is ten days before first day of the issue of the month.

NOTES OF THE 2006 MCA BUSINESS MEETING

(April 2 at the 71st State Open in Helena)

I. ANNOUNCEMENTS AND REPORTS

-- 2006 State Closed/Barto will be in Helena, June 3 and 4 at the Red Lion Colonial Hotel

-- 2007 State Open will be in Missoula, April 21 and 22; 2007 Closed/Barto will be arranged shortly after the new Board is installed

--Secretary/Treasurer's report:

As of April 1, there was \$549.65 in the coffers. Half the rental for Closed/Barto is already paid; as is half the rental for the 2007 Open in Missoula. In addition to the obligation of \$75 for the 2006 Closed/Barto and \$70 for the 2007 Open, there is a lesser amount due for the trophy for the 2006 champion.

As of the first of April there were 115 members, of whom 40 are juniors (most of these latter were signed up during the 2005 scholastic).

The news letter cost an average of just under \$90 per issue to publish and mail.

The web domain name has been renewed for three years. The E.B. began to pay a \$75 annual honorarium to Spencer Olmsted for maintaining the web page.

-- MCN editor's report (made by Dan McCourt for Haluk Beyenal): as Haluk may have to give up being editor, until a volunteer is found we may rely on infrequent mailed flyers and make primary use of the web page (www.montanachess.org).

-- Other: Dan McCourt reported that the 2006 Montana Scholastic/Junior championship will be held in Helena's Wingate Inn on Saturday, April 22.

- II. Election of Officers: newly elected are:
President: William McBroom
Executive Vice-president: James Skovron
Eastern Regional Vice-President: Robert Martin
Western Regional Vice-President: Romie Carpenter
Secretary/Treasurer: Daniel McCourt

III. OLD BUSINESS (there was none)

IV. NEW BUSINESS

- A. Proposed amendments to the Constitution
1. changes in the seeding for the Closed to enhance the prospect of seating the strongest active players (Bylaw V.B)—passed without dissenting vote.
 2. Executive Board to arrange for and announce the date and site of the Closed/Barto at the same time that the State Open is publicized (New Bylaw V.D, subsequent existing sections re-designated E. and F.)—passed by majority vote.
 3. remove and/or substantially alter grounds for suspension/revocation of membership (Article II.D)—seconded, but received no affirmative votes
 4. obligation to inform membership of agenda satisfied by web page posting (Article V.C.)—passed without dissenting vote.
- A. Members' items—there were none

V. Good and Welfare

After some discussion, Dan McCourt made the procedural motion (which passed without dissenting vote) to direct the Executive Board to develop a statement and report to the membership of the definition of a "junior member." The statement is to be mindful of the U.S.C.F. definition and qualifications for various "Junior/Scholastic" tournaments (some of which require the player to be in, or a recent graduate of, high school).

VI. The meeting (which lasted a half hour) was adjourned at approximately 1:30 p.m..

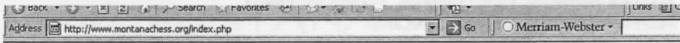
MCA WEB PAGE

Thanks to the splendid work of Spencer Olmsted, the Montana Chess Association has one of the better chess organization web pages. Some improvements are in progress.

WITH THE PASSAGE of Haluk Beyenal's amendment to the constitution, the timing of issues of the news letter is less important than heretofore because it is now possible to meet obligations of informing the membership by using the web page. **Accordingly, members are urged to make increased reliance on the web page. If you do not have a personal connection, please use your public library to access www.montanchess.org .**

MCA GAMES ARE ON THE WEB PAGE

When you visit MCA web page, you can click on game viewer and access to games of MCA events in addition to many other games.



Game Viewer

Congratulations to Paul Kezmann and Spencer Olmsted
1st and 2nd at the Midwinter Open with 4 points each.
A belated congratulations to Paul Kezmann and Jim Skovron for winning the Turkey Open last November.

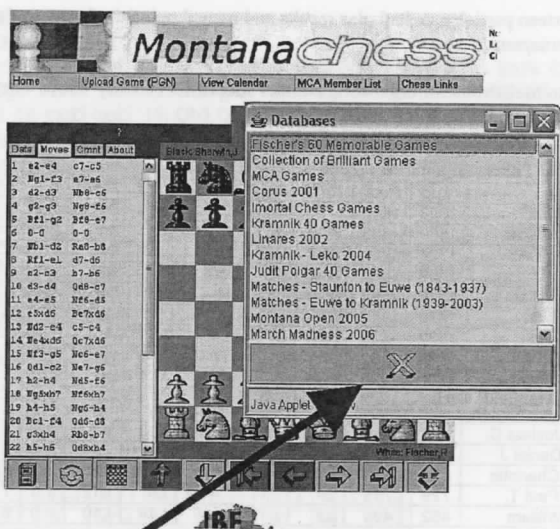
Bozeman Heats It Up at the January Thaw
Haluk Bevensal and Soanzer Olmsted tie for first in Helena at Jovca's January

First click to game viewer to see below screen.



Move	En passant	About
1. e2-e4	c7-c5	
2. Ng1-f3	e7-e6	
3. d2-d3	Bb1-c6	
4. f2-g3	Ng8-f6	
5. Bf1-g2	Bc8-e7	
6. 0-0	0-0	
7. Bb1-d2	Ra8-b8	
8. Bf1-e1	d7-d6	
9. c1-c3	b7-b6	
10. d3-d4	Qd8-c7	
11. e4-e5	Nf6-d5	
12. e5x6	Bc7x6	
13. E62-e4	c5-c4	
14. Ee4x6	Qc7x6	
15. E63-g5	Nc6-e7	
16. Qd1-c2	Nc7-g6	
17. h2-h4	Nf5-e6	
18. Ng5h7	Nf6xh7	
19. h4-h5	Ng6-b4	
20. Bc1-d4	Qd6-d8	
21. g3xh4	Rb8-b7	
22. h5-h6	Qd8xh4	

Click here to access the database



You will see this pop-up window

Then click tournament name

If you put cursor on top of the buttons you will see their functions. Don't be afraid of clicking these buttons!! Enjoy the games. If you would like to add more games, please contact the editor and an MCA officer.

We posted games from the following tournaments on the database.

March Madness (Thanks to Romie Carpenter)

January Thaw (Thanks to Daniel McCourt)

We would like to add more!! Send us your games.....

MCA SUFFERS FROM BAD SCORE SHEETS

There are so many of them that MCA can not chose the worst score sheet.

JANUARY THAW, 2006

By Daniel McCourt

Haluk Beyenal and Spencer Olmsted topped the field in the 2006 Joyce's January Thaw. Each scored 3 wins to go with 2 draws for a full point distance from the pack of seven three-point scores that crowded into 3rd place. Kirk Lundby's 5th round victory bagged the tournament's biggest upset as well as securing a share of the third spot in the standings. Newcomers, Scott Tarter, Michael Blackburn, and Joshua Cochran, shared the prize for top score in their class. Lundby and Cochran also had the top junior scores.

Nine of the sixteen participants had plus results and earned points in the season's first Montana Grand Prix tournament.

Thanks again to Mel Drake for organizing another successful January Thaw. The games from January thaw were posted to MCA web page.

Joyce's January Thaw: Helena, MT 2006

#	Name	Rtng	Post	Rd 1	Rd 2	Rd 3	Rd 4	Rd 5	Tot	TBrk[M]	TBrk[S]
1	Beyenal, Haluk	1808	1813	W8	W7	D3	W4	D2	4.0	13	16
2	Olmsted, Spencer	1569	1638	W16	D4	W13	W3	D1	4.0	12.5	12.5
3	Martin, Robert A.	1764	1753	W12	W5	D1	L2	D4	3.0	14	16
4	Erickson, Ron	1699	1697	W15	D2	W7	L1	D3	3.0	14	15
5	McBroom, William H.	1545	1562	W10	L3	H---	W6	D9	3.0	11.5	11.5
6	Lundby, Kirk O.	1420	1444	W11	L9	W10	L5	W13	3.0	11	13
7	Shuck, Gordon	1532	1525	W14	L1	L4	W10	W11	3.0	11	12
8	Drake, Melvin P.	1165	1162	L1	L10	W12	W15	W14	3.0	9	10
9	Carpenter, Romie G.	1800	1796	H---	W6	U---	W11	D5	3.0	8	8
10	Tarter, Edward Scott	unr.	1222	L5	W8	L6	L7	W16	2.0	9	12
11	Blackburn, Michael P.	unr.	1111	L6	W15	W14	L9	L7	2.0	8	11.5
12	Cochran, Joshua C.	unr.	939	L3	W16	L8	L13	W15	2.0	6.5	9.5
13	McCourt, Daniel J.	1664	1630	U---	W14	L2	W12	L6	2.0	6	10
14	Trolinger, Charlotte	unr.	748	L7	L13	L11	W16	L8	1.0	7.5	10.5
15	Richards, Paul T.	729	715	L4	L11	W16	L8	L12	1.0	7	10
16	Spencer, William	452	430	L2	L12	L15	L14	L10	0.0	6	10

MONTANA OPEN, 2006

#	Name	ID	Rtng	Rd 1	Rd 2	Rd 3	Rd 4	Rd 5	Tot
1	Michael Murray	10509131	1760	W24	W16	W6	W2	D3	4.5
2	Phil Weyland	12653584	1856	W19	W7	W4	L1	W14	4.0
3	James Skovron	12347620	1833	W17	D11	W23	W6	D1	4.0
4	David A Duke	12561576	1770	W5	W13	L2	W7	D8	3.5
5	Fred Hoshaw	12909945	1497	L4	W21	H---	W23	W11	3.5
6	Mark C Anderson	12458601	1716	W10	W12	L1	L3	W19	3.0
7	Robert Martin	12497030	1715	W22	L2	W11	L4	W12	3.0
8	Brent Lashinski	20013234	1687	L12	W9	H---	W13	D4	3.0
9	David Griffin	12469398	1560	W26	L8	H---	W18	D10	3.0
10	Nick J Doulas	12604788	1467	L6	W26	H---	W17	D9	3.0
11	David Webster	12402120	1686	W20	D3	L7	W15	L5	2.5
12	Kirk O Lundby	12799276	1420	W8	L6	W16	D14	L7	2.5
13	Daniel McCourt	12400272	1670	W21	L4	D15	L8	W18	2.5
14	Romie Carpenter	12280430	1825	W15	D23	H---	D12	L2	2.5
15	Gordon Shuck	10331145	1520	L14	W25	D13	L11	W24	2.5
16	Steve Kenith Lengenfelder	12403493	1609	W18	L1	L12	W25	H---	2.5
17	Ronald Weyland	12657609	1540	L3	W20	L18	L10	W22	2.0
18	Richard Mecklenberg	13188200	839	L16	W24	W17	L9	L13	2.0
19	William McBroom	12179140	1549	L2	D22	H---	W20	L6	2.0
20	Arron Hitchcock	12537990	1410	L11	L17	W22	L19	W25	2.0
21	Melvin Drake	12653312	1165	L13	L5	B---	L22	W26	2.0
22	Murray Strong	12517228	1384	L7	D19	L20	W21	L17	1.5
23	Ronald Erickson	12294030	1679	W25	D14	L3	L5	U---	1.5
24	Dustin Thompson	13066244	1477	L1	L18	H---	W26	L15	1.5
25	Edward Scott Tarter	13327511	1221	L23	L15	W26	L16	L20	1.0
26	William Spencer	12567155	451	L9	L10	L25	L24	L21	0.0

MONTANA OPEN, 2006

Martin - white / Julian -black

1. Nf3 d6 2. c4 e5 3. Nc3 f5 4. d3 c6 5. g3 g6 6. Bg5 Nf6 7. Qd2 h6 8. Bxf6 Qxf6 9. Bg2 Be6 10. O-O-O Bg7 11. e4 Nd7 12. exf5 gxf5 13. Nh4 O-O-O 14. Kb1 Nb6 15. Qc2 Kb8 16. a4 d5 17. a5 Nc8 18. cxd5 exd5 19. Qb3 Qf7 20. Na4 d4 21. Qb4 Bf8 22. Nc5 Bd5 23. Rc1 Ka8 24. Rhe1 Bxg2 25. Nxd5 Qd5 26. Nh4 Ne7 27. Rxe5!! Qc6 28. Ne6 Qd7 29. Nxd8 Nc6 30. Qb5 Nxe5 31. Qxe5 Bg7 32. Qc7 Qxc7 33. Rxc7 1-0

Montana Junior Championship

#	Name	Rtng	Post	Rd 1	Rd 2	Rd 3	Rd 4	Rd 5	Tot	TBrk[M]	TBrk[S]
1	Young, Scott	1450	1470	W5	W3	W2	W4	W6	5.0	12	14
2	Lundby, Kirk	1500	1484	W4	W6	L1	W7	W3	4.0	12.5	13.5
3	Fish, Patrick	800	820	W7	L1	W6	W8	L2	3.0	12	12
4	Zhou, Daoning	unr.	607	L2	D5	W7	L1	W8	2.5	7.5	12.5
5	Bratke, Larry	unr.	518	L1	D4	W8	L6	W7	2.5	5.5	10.5
6	Widdecombe, Mac	unr.	697	W8	L2	L3	W5	L1	2.0	9.5	14.5
7	Stingley, Beau	unr.	371	L3	W8	L4	L2	L5	1.0	8	12
8	Bratke, Eric	unr.	100	L6	L7	L5	L3	L4	0.0	8	11

Bozeman Spring Scholastic: K-4 Standings

#	Name	Grd	Rd 1	Rd 2	Rd 3	Rd 4	Rd 5	Tot
1	Ben Hietala	3	W14	W8	W2	W7	W3	5.0
2	Benjamin Wollant*	3	W10	W4	L1	W6	W9	4.0
3	Cem Beyenal**	1	B---	W10	W12	W11	L1	4.0
4	Theo Bennett	4	W13	L2	W15	W8	W7	4.0
5	Jake Paul	3	W15	L6	D9	W13	W11	3.5
6	Levi Montoya	4	W17	W5	L7	L2	W14	3.0
7	Evan Pierson	3	W11	W9	W6	L1	L4	3.0
8	Johnny Paul	2	W12	L1	W10	L4	W15	3.0
9	Taylor Warren	4	W16	L7	D5	W12	L2	2.5
10	Uri Menalled	4	L2	L3	L8	W17	W16	2.0
11	Colter Peterson	4	L7	W16	W14	L3	L5	2.0
12	Morgan Taylor	4	L8	W13	L3	L9	W17	2.0
13	Jamie Taylor	2	L4	L12	W16	L5	B---	2.0
14	Darian Wood	1	L1	B---	L11	W15	L6	2.0
15	Bryan Jaeger	3	L5	W17	L4	L14	L8	1.0
16	Dawson Brown	2	L9	L11	L13	B---	L10	1.0
17	Devon Rogers	2	L6	L15	B---	L10	L12	1.0

*won 2nd place medal in playoff

**won 3rd place medal in playoff

Bozeman Spring Scholastic: 5-8 Standings

#	Name	Grd	Rd 1	Rd 2	Rd 3	Rd 4	Rd 5	Tot
1	Larry Bratke*	5	W13	L5	W12	W8	W2	4.0
2	Jared Marks**	5	W11	W4	W3	W5	L1	4.0
3	Robert Wilson***	8	D6	W11	L2	W9	W8	3.5
4	Beatrice Taylor	6	W12	L2	W9	W6	D5	3.5
5	Stryker Anderson	8	W7	W1	D8	L2	D4	3.0
6	Jordan Malby	5	D3	D7	W10	L4	W12	3.0
7	Colter Tate	5	L5	D6	D13	W10	W11	3.0
8	Will Wright	7	W9	W10	D5	L1	L3	2.5
9	Graham Young	5	L8	W13	L4	L3	B---	2.0
10	Duncan Brown	5	B---	L8	L6	L7	W13	2.0
11	Brandy Taylor	5	L2	L3	B---	D12	L7	1.5
12	Braydon Posey	5	L4	B---	L1	D11	L6	1.5
13	Jordin Warren	5	L1	L9	D7	B---	L10	1.5

*won 1st place medal in playoff

Midwinter Open - February 4, 2006 - Bozeman, MT

Final standings in tie-break order:

#	Name	Rtng	Rd 1	Rd 2	Rd 3	Rd 4	Rd 5	Tot
1	Paul Kezmann	2022	W4	D2	D3	W6	W5	4.0
2	Spencer Olmsted	1569	W8	D1	W5	W3	D4	4.0
3	Lukas I Geyer	unr.	W9	W5	D1	L2	W6	3.5
4	Steven R Scarff	1518	L1	W8	W7	W9	D2	3.5
5	Haluk Beyenal	1807	W7	L3	L2	B---	L1	2.0
6	Richard Mecklenburg	839	U---	W9	W8	L1	L3	2.0
7	Phillip D Clark	939	L5	B---	L4	L8	W9	2.0
8	Edward Scott Tarter	unr.	L2	L4	L6	W7	H---	1.5
9	Michael J Long	1610	L3	L6	B---	L4	L7	1.0

GRAND PRIX 2005-2006

Congratulations to Jim Skovron winning 2005-2006 grand prix.

	THAW	MID-MARCH	STATE OPEN	TOTAL
SKOVRON, JIM		17.1	13.4	30.5
MARTIN, BOB	4.5	11.6	9.2	25.3
ERICKSON, RON	6	8.74		14.7
DUKE, DAVID			13.4	13.4
BEYENAL, HALUK	11.3			11.3
OLMSTED, SPENCER	11.3			11.3
HOWSHAW, FRED			10.7	10.7
SHUCK, GORDON	9			9.0
LASHINSKI, BRENT			8.1	8.1
DOULAS, NICK			7.4	7.4
CARPENTER, ROMIE	6			6.0
LUNDBY, KIRK	6			6.0
MCBROOM, WILLIAM	6			6.0
DRAKE, MELVIN	4.5			4.5

2006 MONTANA CLOSED CHAMPIONSHIP QUALIFIERS*

Jensen—last year's champion

Skovron—grand prix

Martin—grand prix

Duke—Open

Hoshaw—Open

Douglas—Open

* The players who confirmed to play.

UPCOMING EVENTS

For newest information and updates visit www.montanachess.org

13th GREATER NORTHWEST TEAM TOURNEY

Time Control: G30

Location: Inn, 1609 W Broadway, Missoula, MT

Description: May 20 Saturday, 2006

13th GREATER NORTHWEST TEAM TOURNEY

Below is last year's announcement

Inn, 1609 W Broadway, Missoula, MT

Format:

7 teams (4 players per team)

G30, Round robin UNRATED

11:00-11:15 registration

Rounds: 11:45 am, 1:15 pm, 2:35 pm, 3:50 pm, 5:05 pm (round 6 if needed ASAP). No time delay or insufficient losing changes rule.

Prize: Based on 6 teams: First place: \$ 15 each player, Second place: \$ 5 each player, Best board prize: \$ 5 each board

Team entry fee: \$ 35 by May 4, \$ 45 by May 5 or later, \$ 55 at site

Individuals: \$ 10 early, % 20 at the door. Players under age 17 \$ 2 less.

Individuals may enter and be in the player-pool. After teams are seated, remaining teams will be formed from the "pool" of the players.

Enteries and info: Mail to: Greg Nowak, Hellgate Station, PO Box 8572, Missoula, MT 59807

Or in person World games of Montana, 115 W. Frant St. Missoula, Tuesdays: 6:30 pm to 8:30 pm.

Contact: Mail to: Greg Nowak, PO Box 8572, Missoula, MT 59807

Or in person Clandestine Chess Club, 125 W. Main (Down the hall) Missoula, 6:30 pm to 9:00 pm, Monday and Tuesday.

2006 MONTANA CLOSED CHAMPIONSHIP AND BARTO MEMORIAL

Where: Red Lion Colonial Hotel, 2301 Colonial Drive; Helena,
Montana

When: June 3 and 4, 2006

EF: \$25 by May 28, \$30 at the door; juniors (under age 19) half price

Format: 5 R SS, Game in 120 (insufficient losing chances rule in effect);
Full K

On-site Registration: 9:00 a.m.-9:30 a.m., mandatory players' meeting
9:50 a.m.

Rounds: Saturday, 10:00 a.m., 2:30 p.m., and 7:00 p.m.; Sunday 9:00
a.m., 2:00 p.m. (or A.S.A.P.)

Prizes: Championship Section (no EF for qualifiers)= Plaque for
champion

Barto: (based on 15 paid adults) 1st=\$75, 2nd=\$50

Entries/Information: William H. McBroom, 2321 Raymond; Missoula,
Montana (406.728.4654) checks payable to MCA.

Misc.: No phone entries, no computers, no smoking, no wheel chair
access

THE UNIVERSITY-COMMUNITY CHESS CLUB
OF MISSOULA, MONTANA ANNOUNCES

THE 2006 TURKEY OPEN

(MCA Grand Prix Event)

WHERE: BEST WESTERN GRANT CREEK INN, 1/4 MILE NORTH OF I-90 ON
RESERVE ST. , EXIT 101 (DOUBLE OCCUPANCY ROOMS FOR \$77.90 PLUS TAX
BEING HELD UNTIL OCT. 23; MENTION UCCC-TURKEY OPEN – HOT
BREAKFAST COMPLIMENTARY FOR REGISTERED GUESTS; \$7.00 FOR OTHERS)

WHEN: SATURDAY NOVEMBER 4 AND SUNDAY NOVEMBER 5

FORMAT: 5-ROUND SWISS

TIME CONTROLS (ALL SUDDEN DEATH): RDS 1 AND 2 = G in 90, RDS 3, 4, & 5 =
G in 120--INSUFFICIENT LOSING CHANCES RULE IN FORCE

ROUNDS: MANDATORY PLAYERS MEETING @ 10:15 A.M.
10:30 A.M., 2:00 P.M., 6:30 P.M. NOVEMBER 4
9:00 A.M., 1:30 P.M. (OR ASAP), NOVEMBER 5

ENTRY FEE:

* \$25, IN ADVANCE (BY NOVEMBER 2, CHECKS TO "UCCC"), JUNIORS
HALF PRICE, C/O

WILLIAM H. MCBROOM
2321 RAYMOND AVENUE
MISSOULA, MT 59802

* AT THE DOOR \$30 (NO PHONE ENTRIES)

ON-SITE REGISTRATION: 9:00-9:45 A.M. SATURDAY, NOVEMBER 4

PRIZES (BASED ON 30 PAID ADULTS):

1st = \$120, 2nd = \$90, 3rd = \$70

1600 -1799 = \$50

1400 -1599 = \$40

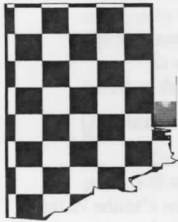
UNDER 1400 and Unrated = \$30

UPSET = \$20 (both players must have established ratings)

FOR MORE INFORMATION:

WILLIAM H. MCBROOM @ 406.728.4654

NOTE: EQUIPMENT NOT PROVIDED, NO-SMOKING VENUE, WHEEL CHAIR
ACCESSIBLE



Haluk Beyenal

Editor

Montana Chess Association

29 Border Lane, Apt #2

Bozeman, MT 59718