

428 Wilder Avenue
Helena, Montana
February 14, 1961

Sgt. Bates
Malmstrom Air Force Base
c/o John R. Barto
2620 - 2nd Avenue South
Great Falls, Montana

Dear Sir:

The 1961 Montana State Open Chess Tournament will be held in Helena this year. In all probability it will be in May. There is a possibility, however, that it might be scheduled for the last week end in April. Due to certain factors it is not possible to set a date at this time.

It is understood that there are a number of chess players at Malmstrom Air Force Base who may be interested in entering the tournament. I sincerely hope that the Base will be represented.

You will receive notification as to the exact dates as soon as they have been decided upon.

Yours very truly,

JOHN J. REDDY
President
Montana State Chess Association

428 Wilder
Helena, Mont.
April 19, 1961

To Chess Review

Dear Sir:-

We are conducting the Montana State Open tournament here on May 6 and 7. It is to be a 5-round Swiss and it would be greatly appreciated if you could clarify a few matters for us.

What is customary when ^{the tournament is} ~~the tournament is~~ ^{held} ~~held~~ ^{with an odd number of} ~~with an odd number of~~ ^{players} ~~players~~ ^{is} ~~is~~ ^{the} ~~the ^{player} ~~player~~ ^{getting the bye} ~~getting the bye~~ ^{gets credit for 1/2 point?} ~~gets credit for 1/2 point?~~~~

1) The tournament has an odd number of ~~players~~ ^{players}, thus necessitating a bye in each round. Does the person getting the bye get credit for 1/2 point?

2) After pairings have been made for say the third or fourth round a player fails to appear for his game and it is later learned (after the round is over) that he has withdrawn from the tournament. Does the player he was scheduled to play against get credit for one point by virtue of a win by forfeit? ~~What is the rule?~~

3) If the player in #2 above does get credit for a win does the one point count as an S-B point for those who defeat the player who won by forfeit? ~~Does it count in the ranking?~~

OVER

- 4) A player withdraws after 2 or 3 rounds, leaving an odd number of players in the tournament. Is the odd man paired with him on the chance he might show up? If so, is this continued each round and does each winner by forfeit get one point?
- 5) The same situation occurs as in #4 above except that the withdrawal leaves an even number of players?
- 6) A player defeats another player who has previously had a bye. If the bye gave that person $\frac{1}{2}$ point does that $\frac{1}{2}$ point count as $\frac{1}{2}$ S-B point for each person who defeats him?

I am enclosing a self addressed envelope and hope you will be kind enough to furnish clarification of these points by return mail. Thanks a million.

John J. Reddy, Pres
Frank Pappay, Secy Treasr
Montana State Chess Assoc.

S.S. Kindly

FOUNDED
1933

**CHESS
REVIEW**
THE MONTHLY CHESS MAGAZINE

134 WEST 72 STREET • NEW YORK 23, N. Y. • LYCEUM 5-1620

April 23

Dear Mr. Pippy:

Thank you for your letter.

Here are the answers to your questions:

(1) The bye is given to the lowest score. Bye gets a full point. In the beginning, I suppose it is by a toss up that the bye is determined.

(2) Win by forfeit.

(3) The forfeit win does not count in tie breaking.

(4) Forfeit first time. Assume he's out afterwards.

(5)

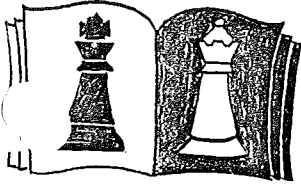
(6) Win by forfeit is one point.

This information, I understand, is in The Encyclopedia and Blue Book of Chess - Harkness. We can supply. Price is \$7.50.

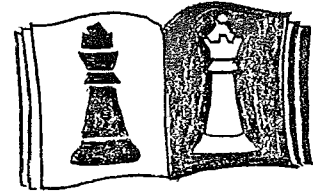
Sincerely yours,

IAHR

Al Horowitz



MONTANA STATE CHESS ASSOCIATION



510 W. Lawrence Street
Helena, Montana

ANNOUNCEMENT OF MONTANA OPEN CHESS TOURNAMENT

- Date - Saturday and Sunday - May 6 and May 7.
Place - Helena, Montana - Placer Hotel - Mezzanine Floor.
Type - 5 round Swiss, S-B point system.
3 Classes - 1 - Championship; Entry Fee - \$3.75
 2 - Class "A"; Entry Fee - \$3.75
 3 - Junior Class; Entry Fee - \$2.50 - (Must be under 18).

Players pick own classes.

Juniors may, if they wish, enter other classes.

Entry Fee covers Saturday dinner, Sunday lunch, tip,
prizes, everything.

Time Limits - championship class only: 45 moves first 2 hours,
and 25 moves per hour thereafter.

Open to everyone, regardless of residence or affiliation
with chess organizations.

Please bring chess sets and clocks if you have them.

The following schedule is planned and will be followed as closely as possible:

- May 6 - Registration until 1:00 P.M.
 1st round - 1:30 P.M. to 5:30 P.M.
 Annual Dinner and Meeting 5:45 P.M.
 2nd round - 7:15 P.M. to end of round.
- May 7 - 3rd round - 9:00 A.M. to 12:30 P.M.
 4th round - 12:45 P.M. to 4:15 P.M.
 5th round - 4:30 P.M. to 8:00 P.M.

Time from 8:00 P.M. to 11:00 P.M. will be
available for completion of adjourned games.

Games not completed in the allotted time will be adjourned and considered draws for the purposes of next round pairing. Adjourned games to be completed later if time allows. Adjudication only if necessary after all available time has expired.

Come and enjoy a weekend of chess in the Capitol City.

Yours truly,

Frank A. Pippy, Sec'y. Treas.

MONTANA CHESS ASSOCIATION

Minutes of the Meeting Held May 6, 1961

Helena, Montana

The meeting was opened by Vice-President George Zimmerman. He called upon a number of Chess players to give their review of former Chess Tournaments and the beginning of our Chess Association in Montana.

The rules governing the Chess Tournament held this weekend were explained by Director Dr. Spaulding and he again outlined the method of compiling SB points.

The Treasurer's report was given by Secretary-Treasurer Frank Pippy.

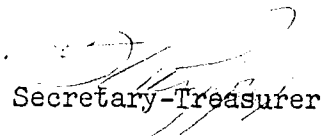
The following questions were brought to the attention of the association by Mr. Zimmerman.

- Question 1. Whether the winner of the Class A Section and the runner-up should both go into the championship class the next year. A motion was made and seconded that both the winner and the runner-up in the Class A Section would go to the Championship class the following year. This motion was voted down and from now on the winner only goes to the championship class.
- Question 2. If we wanted to continue to have an open tournament and invite people from the surrounding states. A motion was made and seconded that we continue to have an open tournament and it carried unanimously.
- Question 3. Whether or not we should have cash prizes or continue as is with trophies. The group voted unanimously to stay with the trophies and not have cash prizes.

Dr. Adam Smith made the motion to hold the 1962 tournament in Butte. This motion was seconded and the group voted for the tournament site in Butte.

Adam Smith was elected President and Herb Wendell was elected Secretary-Treasurer.

There being no further business, the meeting was adjourned.


Secretary-Treasurer

Account Statement

Payment for [unclear] \$ 100.00
 [unclear] \$ 50.00
 [unclear] \$ 20.00
 [unclear] \$ 10.00
 [unclear] \$ 5.00
 [unclear] \$ 2.00
 [unclear] \$ 1.00
 [unclear] \$ 0.50
 [unclear] \$ 0.25
 [unclear] \$ 0.10
 [unclear] \$ 0.05
 [unclear] \$ 0.02
 [unclear] \$ 0.01
 [unclear] \$ 0.005
 [unclear] \$ 0.002
 [unclear] \$ 0.001
 [unclear] \$ 0.0005
 [unclear] \$ 0.0002
 [unclear] \$ 0.0001
 [unclear] \$ 0.00005
 [unclear] \$ 0.00002
 [unclear] \$ 0.00001
 [unclear] \$ 0.000005
 [unclear] \$ 0.000002
 [unclear] \$ 0.000001
 [unclear] \$ 0.0000005
 [unclear] \$ 0.0000002
 [unclear] \$ 0.0000001
 [unclear] \$ 0.00000005
 [unclear] \$ 0.00000002
 [unclear] \$ 0.00000001
 [unclear] \$ 0.000000005
 [unclear] \$ 0.000000002
 [unclear] \$ 0.000000001
 [unclear] \$ 0.0000000005
 [unclear] \$ 0.0000000002
 [unclear] \$ 0.0000000001

LAPIKEM

Payment for [unclear] \$ 38.26
 Cost - stamp + envelope for mail receipts \$ 5.00
 Interest .92

Balance on [unclear] 11-26-61 \$ 73.95
 [unclear]

Misc. expenses, postage, checks, 42 score pads, to J. Kelly \$ 2.80
 Balance: \$ 41.18

26TH MONTANA STATE CHESS TOURNAMENT

Helena, Montana

May 5th and 6th, 1961

Championship Class

Rank	Name	Round					Game Score	S-B Points
		1	2	3	4	5		
1	Papp	D/10	W/20	W/9	W/4	W/3	4½	12½
2	Lapiken	W/15	W/6	D/4	D/5	W/7	4	12
3	Jarosz	W/18	W/8	D/5	W/11	L/1	3½	9¼
4	Albert	W/13	W/14	D/2	L/1	W/11	3½	8½
5	Berkoff	W/21	W/19	D/3	D/2	D/6	3½	8
6	Smith	W/20	L/2	W/8	W/13	D/5	3½	7-3/4
7	Roney	L/8	W/15	W/14	W/10	L/2	3	7
8	Zimmerman	W/7	L/3	L/6	W/18	W/17	3	7
9	Ferry	L/11	W/21	L/1	W/12	W/13	3	5½
10	Barto	D/1	W/22	D/11	L/7	W/15	3	5½
11	Sims	W/9	W/17	D/10	L/3	L/4	2½	6½
12	Burley	L/14	W/18	D/19	L/9	W/20	2½	3-3/4
13	Tuggle	L/4	W/16	W/17	L/6	L/9	2	4
14	Stromsborg	W/12	L/4	L/7	L/16	W/19	2	4
15	Merierding	L/2	L/7	W/21	W/20	L/10	2	2
16	Shanley	L/19	L/13	L/20	W/14	W/22	2	2
17	Felt	W/22	L/11	L/13	W/19	L/8	2	1½
18	Sheire	L/3	L/12	W/22	L/8	W/21	2	1
19	Southern	W/16	L/5	D/12	L/17	L/14	1½	3¼
20	Reuterdahl	L/6	L/1	W/16	L/15	L/12	1	2
21	Hansen	L/5	L/9	L/15	W/22	L/18	1	0
22	Doulas	L/17	L/10	L/18	L/21	-	0	0

Class "A"

1	DeVore	W/3	L/6	W/13	W/12	W/2	4	12
2	Spaulding	W/5	W/17	W/6	W/7	L/1	4	10½
3	Peterson	L/1	W/15	W/14	W/16	W/7	4	8½
4	Wendel	D/12	L/10	W/18	W/9	W/6	3½	8½
5	Southern	L/2	W/18	D/9	W/14	W/11	3½	5¼
6	Bates	W/13	W/1	L/2	W/8	L/4	3	9
7	Coak	W/15	W/14	W/8	L/2	L/3	3	7
8	Hucke	W/18	W/9	L/7	L/6	W/12	3	4½
9	Gerle	W/11	L/8	D/5	L/4	W/16	2½	5¼
10	Cole	L/17	W/4	L/16	L/11	W/13	2	5½
11	Shanley	L/9	L/13	W/15	W/10	L/5	2	4
12	Burgmier	D/4	D/16	W/17	L/1	L/8	2	3½
13	Temple	L/6	W/11	L/1	W/17	L/10	2	3
14	McDonald	W/16	L/7	L/3	L/5	W/18	2	1½
15	Austreng	L/7	L/3	L/11	W/18	W/17	2	1
16	Applebaum	L/14	D/12	W/10	L/3	L/9	1½	3
17	Edwards	W/10	L/2	L/12	L/13	-	1	2
18	Ricco	L/8	L/5	L/4	L/15	L/14	0	0

Junior Class

1	Liddell	W/3	W/2	W/4	W/6	W/5	5	10
2	Christoffer	W/6	L/1	W/5	W/4	W/3	4	6
3	Harper	L/1	W/4	W/6	W/5	L/2	3	3
4	Wilson	W/5	L/3	L/1	L/2	W/6	2	1
5	Martin	L/4	W/6	L/2	L/3	L/1	1	0
6	Peterson	L/2	L/5	L/3	L/1	L/4	0	0



ELLER PAPI - SEATED.

At the table with the other two men.