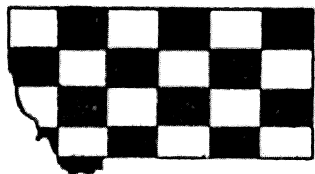
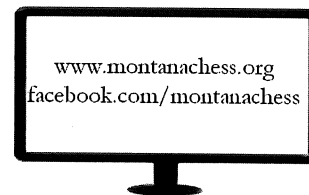


82nd Montana Open Issue



Montana Chess Association



2017 MCA Annual Business Meeting

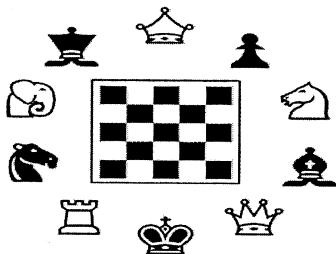
(between rounds 4 and 5 of the Montana Open)

- I. REPORTS OF OFFICERS
- II. ANNOUNCEMENTS
- III. ELECTION OF OFFICERS
- IV. OLD BUSINESS
- V. NEW BUSINESS

Consideration of those items that have been submitted for posting on the MCA website. Such items must have been posted for at least 10 days.

- VI. Good and Welfare

Any member may speak on any topic. Actionable items are not in order.



<i>Inside this issue:</i>	
Annual Meeting Alert	1
Club and MT Board Info	2
Greater Great Falls Standings	3
Current Grand Prix	3
Annual Meeting Agenda Items	4
Tips for Tournament Play	5
Games of Interest	6
More Games	7
More Games	8
Still More Games	9
Upcoming Events	10
Upcoming Events	11

Greater Great Falls Open 2017

This year's Greater Great Falls Open, with a smaller than usual field, was very competitive and another entertaining event for the players and the spectators. Scott Caldwell, returning after a long break from tournament play, edged Wilton Strickland on tie-breaks for first place. Both picked up 3.5 points. Third-fourth place was a tie between Jim Skovron and Antonius Raelund, each with 3.0 points. Gary Solomon upset the mostest. His second upset came in the 4th round and the 137 point differential was the tournament's best.

Thank you very much to all for their support of this event under difficult lodging circumstances due to the various sporting events in town. The hotel most of the out-of-towners stayed at was a four-star accommodation in spite of that sneaky, deranged, attack-cat...

Falls Open results are on page three. Many thanks to Antonius Raelund for game annotations!



Kalispell Chess Club

Location: Sunnyview Cafe in the Kalispell Regional Medical Center

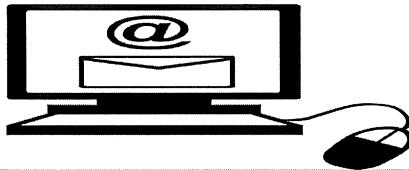
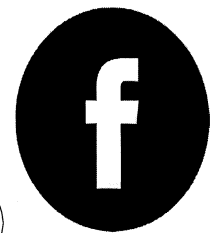
Time: Tuesdays anytime between 5 pm and 8 pm

Info: All skill levels welcome; No fees; Bring your chess set, but there are extras at the site; Free lessons available

Contact: Gary Solomon; 253-3883
galsolomon@yahoo.com



www.montanachess.org
facebook.com/montanachess



University-Community Chess Club

Meeting Location: Room 235, Liberal Arts Building.
University of Montana, Missoula

Meeting Time: Thursdays Start drifting in about 6:45pm
Clocks start at 7:00pm

Club Info: Sherwood Moore 544-9992
Dan McCourt 274-0465
3 rated games per month, occasional blitz

Billings Chess Club

Location: Off the Leaf coffee house

Time: Thursdays 7 pm

Info: All skill levels welcome; No fees; Chess sets and clocks are available

Contact: David Duke, ddukelaw01@gmail.com, 672-8946 or Dan Mattson, mattsondm@me.com, 490-3983

Helena Chess Club

Location: Lewis and Clark County Library

Time: Thursday 6 – 9 pm

Contact: Murray Strong
murstrong1958@gmail.com

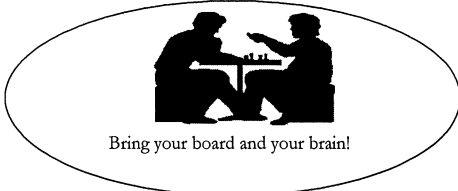
Butte Chess Club

Location: Butte-Silver Bow Public Library

Time: Fridays 2 pm

Info: All skill levels welcome; No fees; Equipment provided (or bring your own)

Contact: Allen Brazier, abrazier@buttepubliclibrary.info



MCA Board Members

Dan McCourt—President (274-0465)
608 West Central, Missoula, MT 59801
mccourtdj@charter.net

Jacob Copley—Western V.P.
yelpocboaj@gmail.com

Dan Mattson—Eastern V.P.
mattsondm@me.com

Wilton Strickland—Executive V.P.
wiltonlaw3@yahoo.com

Gary Solomon—Secretary/Treasurer
712 Mountain Meadow Rd, Kalispell, MT 59901
(253-3883) galsolomon@yahoo.com

Bozeman Chess Club

Location: Bozeman Public Library

Time: Thursday 6 – 8 pm / 6 – 9 pm when on first floor

Info: No fees, All skill levels welcome, boards and pieces available, brings clocks if you wish

Contact: Kevin Kuehnel; kevin.kuehnel1@gmail.com

Note: There is a kids chess club that meets at the library Tuesday afternoon – see library events calendar for more information

“PROVISIONAL” DOES NOT MEAN UNRATED!

Ratings based on between 4 and 25 games are called “provisional ratings” to indicate they are less reliable than established ratings. However, such ratings are valid for pairing and prize purposes at all USCF-rated events, unless otherwise stated in advance publicity.



The Chess Guest

It's always nice to save some bucks and stay at somebody's house when out of town. Some things to consider when there are several of us so as to make the host's work lighter. Bring: 1) a sleeping bag, 2) a pillow, 3) maybe even bring your own towel, and 4) buy breakfast for the host.



Agenda Items for the 2017 MCA Annual Meeting

- ♦ A. Add the age threshold for MCA membership — Junior vs. Adult—at under twenty years old at the expiration of the annual membership month.
- ♦ B. Decide if the statement...“Non-residents may join without cost.” should remain in Article II. C.
- ♦ C. Define a clear definition of “Montana Resident” for MCA membership purposes.
- ♦ D. Discuss how to handle all of the MCA Memorials other than naming events after them.
 1. Name the MCA Championship Trophy(s) after Bill McBroom.
 2. Name a trophy for every Memorialized person and associate it with an event.
- ♦ E. Proposed options to simplify the MCA Closed/Championship event and promote better attendance:
 1. MCA Championship eligibility is extended to any player with Grand Prix points and includes previous year Champion(s). Include MT Open first, second, and third place finishers, with a plus score, if Grand Prix points are not awarded.
 2. At the executive board's discretion, offer monetary prizes for first place in each of the Closed and Open sections.
 3. Retain only the six-player round-robin format for the MCA Championship. Eliminate variations of the championship format based on co-champions by using a tie-break system to seed only the top player from the previous year's Championship. Co-champions are still recognized as such and are awarded trophies or prizes.

From the editor's keyboard

Scheduling chess tournaments has it's challenges. What can get in the way?? First weekend of hunting season, Super Bowl, graduations, Easter, other chess events within two weeks, UM home games, Mother's Day.....you get the picture. We thought all the bases were covered in March only to discover a statewide, non-high school wrestling event took over every motel room in town the weekend of the Great Falls Open. Not quite so bad but inconvenient is having the MT Open at the same time as college basketball's Final Four. I can see it now...if Gonzaga plays Saturday night, most of the field will take a 3rd round bye. Well, go Zags!

One more item...anybody going to the US Open in Virginia?? If so, maybe you would like to be Montana's official delegate. Just speak up at the annual meeting and you got it! —danmccourt



2017 Greater Great Falls Open TD Gary Solomon

	Player	Rating	Post	Rd 1	Rd 2	Rd 3	Rd 4	Rd 5	Total	TBrk
1-2	Scott Caldwell	1901	1900	W4	L2	W8	D5	W3	3.5	12.0
	Wilton Strickland	1822	1832	W11	W1	D5	L3	W8	3.5	11.0
3-4	Jim Skovron	1782	1787	W10	D8	D7	W2	L1	3.0	12.0
	Anthony Raelund	1696	1703	L1	W11	W6	L8	W5	3.0	10.5
5-7	Darren Stacey	1823	1814	W6	D7	D2	D1	L4	2.5	9.5
	John Henneford	1506	1518	L5	W12	L4	W11	D10	2.5	5.0
	Thad Suits	1873	1872	W12	D5	D3	H—	U—	2.5	4.0
8-9	Gary Solomon	1559	1598	H—	D3	L1	W4	L2	2.0	9.5
	Dustin Thompson	1526	1561	U—	W10	U—	U—	W11	2.0	1.0
10	Frank Miller	1302	1288	L3	L9	L11	X12	D6	1.5	6.5
11	Robert Mitchell	1449	1420	L2	L4	W10	L6	L9	1.0	10.0
12	Dennis Petrak	1616	1584	L7	L6	H—	F10	U—	0.5	2.5

Greater Great Falls Open Upsets by Round

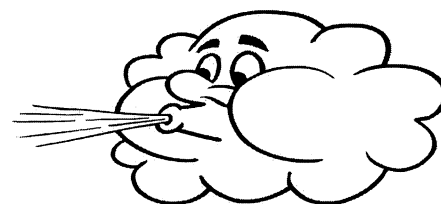
Rd 2....Solomon (1559) ½-½ Skovron (1782) 112 points

Rd 2....Henneford (1506) 1-0 Petrak (1616) 110 points

Rd 4....Solomon (1559) 1-0 Raelund (1696) 137 points

Rd 5....Raelund (1696) 1-0 Stacey (1823) 127 points

Rd 5....Miller (1303) ½-½ Henneford (1506) 102 points



MCA 2016-2017 Grand Prix	Turkey	Thaw	Grt. Falls	Total
Wilton Strickland	6.5	11.3	16.7	34.5
Jim Skovron	10.9	13.3	8.0	32.2
Anthony Raelund	12.6		13.3	26.0
Sherwood Moore	9.5	10.0		19.5
Scott Caldwell			16.7	16.7
Daniel Mattson		10.0		10.0
Thomas Mostad		8.5		8.5
Michael Muller		8.0		8.0
Jacob Copley	6.5			6.5
J. Michael Jensen	6.5			6.5





Tips for Tournament Play

submitted by Gary Solomon

These tips represent a small compilation of best practices and reminders for playing in a chess tournament. Many of these reminders you will hear at the beginning of every event, while others may be new ... and surprising. Some of these tips are adapted from the book, "Just Law" authored by Tim Just.

- Turn your cell phone, or other electronic devices, off before the beginning of the round. A strict Tournament Director [TD] may penalize you for the disturbance if your device rings or alarms during the round.
- Make sure that you have a clock that you know how to set and that is working before the start time of the round. It is very disruptive to the other players to 'discover' that you don't have a clock once the round has begun.
- Each player is responsible to mark their score or check that their score is correctly entered on the Pairing Sheet before leaving the playing room at the end of the round. The TD uses this scoring sheet for the next round pairings.
- Each player must sign both their own and their opponent's scoresheet and turn in a copy to the TD at the end of the round.
- Stop the chess clock when you need to go get the TD to make a ruling on your game. Tell your opponent why you stopped the clock.
- Use the same hand to press your clock and make your move. It may seem picky, but develop the habit to avoid a rules dispute.
- Make your move before offering a draw.
- When castling, move your King first to avoid any dispute about your intended move.
- Have any conversations outside the playing room and away from the door if other games are still underway when yours is finished.
- If you must leave the playing room during your game for more than fifteen minutes, notify the TD.
- If you miss a round without notifying the TD, you will be expelled from the tournament. Notify the TD to avoid a forfeit loss and depriving another player of a rated game. Notification must occur before the next round pairings are made.
- Always check the Wall Chart or Standings Chart to ensure that your name, USCF ID, scores and byes are entered correctly. Notify the TD immediately of any discrepancies.
- Please be respectful of the other players and clean up your playing area after you complete your game and before you leave the playing room.
- Make certain that you know the starting time for the next round. It should be posted, otherwise confirm it with the TD.



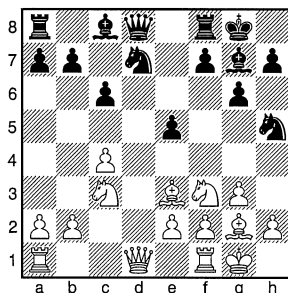
□ Raelund, 1696

■ Caldwell, 1901

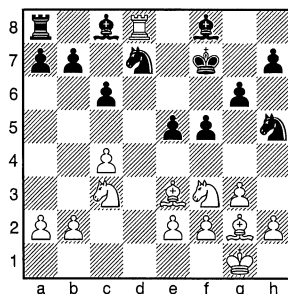
Greater Great Falls

[English Opening]

1.c4 Nf6 2.g3 c6 3.Bg2 g6 4.Nc3 Bg7
5.Nf3 0-0 6.0-0 d5 7.d3 Nbd7 8.Bf4 Nh5
9.Be3 dxc4 10.dxc4 e5?!± Diagram



Instead either Qa5 or Nb6 would have kept the equality. 11.Qd2?!= Qd6 would have been a better try at maintaining White's slight advantage. f5 12.Rad1 Qe7 13.Qd6?--+ (13. Bg5=) Qxd6 14.Rxd6 Rf6?=(14.....e4 Would have kept the advantage.) 15.Rfd1 Rxd6 16.Rxd6 Bf8 17.Re6? (Better would have been Rd2 or Rd1) Nb6? (Gives away a large part of Black's advantage 17.....e4!-+) 18.Re8 Kf7 19.Rd8?! (At this point, giving up the exchange with 19. Rxf8 was the right choice to make.) Nd7 Diagram



20.Bg5? (The best line in this position is a hard one to find. Starting with the unnatural move 20. Nd5! cxd5 21. Nxe5+ Nxe5 22. Bxd5+ Ke7 {22.....Kg7 23.Bd4} 23. Bg5+ Nf6 24.Bf6+ Kxf6 25.Rxf8+) e4 21.Nd4 h6? (21.....Nhf6!) 22.Bh4?? (22. Be3 Minimizes the damage) Ng7 23.g4 g5 24.Bg3? (24.gxf5 gxh4 25.Nxe4 is a hard pill to swallow but the alternative is worse.) f4 25.Nxe4 Ke7 26.Rxc8 Rxc8 27.Bxf4

gxf4 28.Nf5+? (With White being down material he shouldn't be offering to trade down.) Nxf5 29.gxf5 Kf7 30.Bh3 Nf6 31.Bg2 Nxe4 32.Bxe4 Bc5 33.Kg2 Kf6 34.f3 Rg8+ 35.Kh3 Ke5 36.a3 Kd4 37.b4 Bb6 38.Bd3 Ke3 39.a4 Kf2 40.b5 Kg1 41.Be4 cxb5 42.axb5 Rg5 43.f6 Bc5 44.Bxb7 Kf1 45.Kh4 Kxe2 46.f7 Kf2 47.Be4 Kg2 48.h3 Kf2 49.Bc6 Ke3 50.b6 axb6 51.Be4 Kd4 52.Bd3 Ke5 53.f8Q Bxf8 54.c5 Bxc5 55.Bf5 Rxf5 56.Kg4 h5+ 57.Kh4 Bf2# 0-1

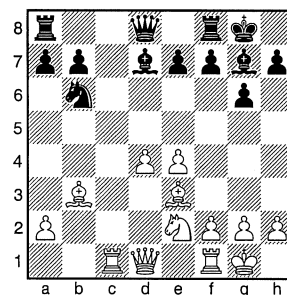
□ Henneford, 1506

■ Stacey, 1823

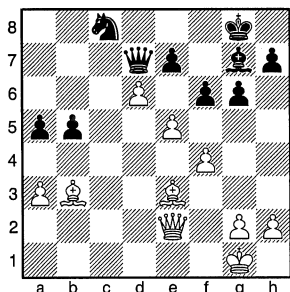
Greater Great Falls Open

[Grunfeld, Exchange Variation]

1.d4 Nf6 2.c4 g6 3.Nc3 d5 4.cxd5 Nxd5
5.e4 Nxc3 6.bxc3 Bg7 7.Bc4 c5 8.Ne2 0-0
9.0-0 Nd7 10.Be3 cxd4 11.cxd4 Nb6
12.Bb3 Bd7 13.Rc1 Diagram



(Up to this point the game has followed Gunyecz--Kemendi. That game continued with 13...Bb5 and Black fell for a mating attack. That's not to say this position is won for White. There is still plenty of play for both sides.) Rc8 14.Qd2 Bb5 15.Rxc8 Qxc8 16.Rc1 Qd7 17.d5 Bxe2? (Giving up the bishop pair in an open position isn't a good idea for the most part. Especially when there are no signs of compensation on the board) 18.Qxe2 Rc8 19.Rxc8+ Nxc8 20.f4 b5?± (20....Bc3 and Black's Bishop is on it's way to trade off White's fire breather on the a7-g1 diagonal. 21.h3 Ba5 22.e5 Bb6 23.Bxb6 Nxb6) 21.e5 a5 22.a3 f6 23.d6+! Diagram



e6??± (Kh8 would have kept White's advantage to a minimum. Instead White gets a protected passed pawn.) **24.Bd4?** (Handing Black a potential pin on the e5 pawn. The d6 pawn is in danger. 24.Bc5! was the better move.) **f5?** (This only serves to make Black's bishop worse off. fxe5 would have served better) **25.Qc2??** (White misses the pin handing Black the advantage in one move.) **Nxd6!** (Black grasps his chance to play for the full point!) **26.Qc5?!** (a half-move, as Silman likes to call it, that allows Black a tempo to get his knight placed actively.) **Ne4 27.Qb6 Kf7 28.Bb2?** (Opening up the file for the queen turns out to be a fatal error) **a4 29.Ba2?? Qd1# 0-1**

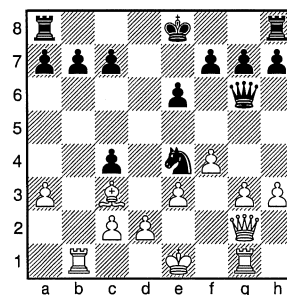
□ **Miller, 1303**
 ■ **Skovron, 1782**
 Greater Great Falls Open
 [French Advance]

1.e4 e6 2.d4 d5 3.e5 c5 4.c3 Nc6 5.Nf3 Bd7 6.Bd3 Qb6 7.0-0 cxd4 8.cxd4 Nxd4 9.Nbd2 Bc5 10.Nxd4 Bxd4 11.Nf3 Ne7 12.Ng5 Bxh7! Bxe5?! (Nc6!) 13.Nxf7 Kxf7 14.Qh5+ g6 15.Qxe5 Nc6 16.Qc3?! (16. Q4+!?) d4 17.Bxg6+?? (the sacrifice fails to gain compensation for the piece) Qd2 is better hxg6 18.Qf3+ (White tries to form an attack but his pieces aren't active enough) Kg7 19.Bg5 Raf8 20.Qe4 Qc7 21.g3?! (21. f4!?) Qe5 22.Qxe5+ (the best move but still a rather hopeless position) Nxe5 23.Bf4? Nf3+ 24.Kg2 Bc6 25.h4?? (allows mate in 5) Nxb4+ (the game might have continued---26.

Kh3 ...Nf3+ 27. Kg4...Nh2+ 28. Kg5...Rh5# 0-1

□ **Strickland, 1822**
 ■ **Mitchell, 1449**
 Greater Great Falls Open
 [Bird's Opening]

1.f4 d5 2.Nf3 Bg4 3.e3 e6 4.h3 Bxf3 5.Qxf3 Nf6 6.Nc3 Bb4 (An interesting and at the same time, rare, line for Black) **7.a3 Bxc3 8.bxc3 Ne4 9.g3 Nd7 10.Bb2 Qf6** (A slight inaccuracy. Black seems to be trying to force an attack without heeding what the board has to say. Instead 10...0-0 or 10...c6 would have maintained the equality.) **11.Rb1** (11. 0-0-0!) **Ne5?!** (Castling on either side would have been better.) **12.Qg2 Nd7** (The knight would have better served on c6 where it would have a flexible placement.) **13.c4 Qg6 14.Bd3 Ndc5 15.Bxe4 Nxe4 16.Rg1?! (16.d3 Qxg3+ 17.Qxg3 Nxd3 18.Rg1 Nf5 19.cxd5 Nxe3 20.dxe6 fxe6 21.Rxg7 Rf8 22.Be5 with advantage) dxc4 17.Bc3?? Diagram**

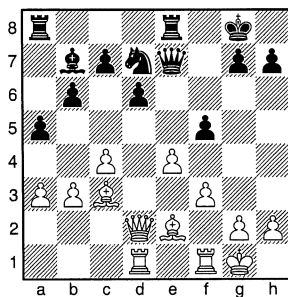


(17.Bxg7 Rg8 18.Bd4 offers only a slight advantage to Black Rd8 (17...0-0-0 would have been better! The king has to find safety before an attack gets going.) 18.Rxb7 Nxc3 (18...0-0 This was his last chance to bring his king to safety.) 19.Qc6+! (The knight can wait! White has a mating attack on hand.) Ke7?? (19....Kf8 Keeps Black in the game.) 20.Qxc7+ Kf6 21.Qe5# 1-0

□ Caldwell, 1901
 ■ Strickland, 1822

Greater Great Falls Open Rd 2
 [Budapest Defence]

1.d4 Nf6 2.c4 e5 3.dxe5 Ng4 4.Nf3 Nc6
 5.Nc3 Ngxe5 6.e4?! Bb4 7.Bd2 d6 8.Be2
 0-0 9.0-0 b6?!± 10.a3 Bxc3 11.Bxc3
 Bb7?!+- (11....Nxf3 Trading a pair of knights
 and thereby giving his other pieces more room
 to maneuver.) 12.Qc2?!= (Better was 12. Nd2!
 With more space, White wants to refrain from
 allowing trades.) Qe7?! (Again, missing a
 chance to trade off the knights) 13.Rad1
 Nxf3+! 14.Bxf3 Ne5 15.Be2 Nd7?!±
 (Ng6 offers more) 16.f3 a5 17.b3
 (b4 maintains an edge) Rfe8 18.Qd2 f5
 Diagram

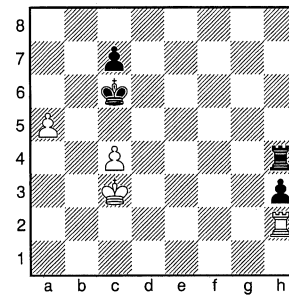


19.Bd3? (The best move is also the hardest to
 find. After c5 white is able to increase his
 advantage after several variations) fxe4
 20.fxe4?!± (Bxe4=) Nc5 21.Bc2 Nxe4 22.Qd3
 Qg5 23.Bd2?!+- Qh5 24.Be3 Nf6 25.Bd4
 Be4 26.Qg3? (Qc3 puts up more resistance)
 Bxc2 27.Bxf6 Qg6! 28.Qxg6 hxg6 29.Bg5
 Bxd1 30.Rxd1 Re2 31.Rd3 Rae8 32.Bd2
 R8e5 33.Kf1 R2e4 34.Kf2 Rf5+ 35.Rf3
 Rxf3+ 36.Kxf3 Re6 37.h3 c6 38.Be3 b5
 39.cxb5 cxb5 40.Bb6 a4 41.bxa4 bxa4
 42.Bd4 d5 43.Bc5 Re4 44.g3 Kf7 45.Bb4??
 Rxb4 (White resigns)
 0-1

□ Skovron, 1782
 ■ Solomon, 1559

Greater Great Falls Open Rd 2
 [London System]

1.Nf3 Nf6 2.d4 d5 3.Bf4 Bf5 4.e3 Nh5
 5.Bg3 Nxg3 6.hxg3 Bg4 7.c3?! (7.c4!) Qd6
 8.Qc2 g6 9.Nbd2 Nd7 10.Bd3 Bg7 11.Rh4
 h5 12.0-0-0 0-0-0 13.Re1 e5 14.dxe5 Nxe5
 15.Nxe5 Bxe5 16.Nf3?!± Bxf3?= 17.gxf3
 Bxg3?+- (Black does not get enough
 compensation for the piece.) 18.fxg3 Qxg3
 19.Rhh1 Rde8 20.Qe2 Re7 21.e4?!+-
 (A good move but 21. Rhg1! is better) Rhe8
 22.Reg1 Qf4+ 23.Kc2 Re6 24.Qf2?
 (With this move, the game returns to equality)
 dxe4 25.Bxe4?? (missing the pin) Rxe4
 26.Qxa7? Re2+?! (Ra4 reclaims the pawn)
 27.Kb3 Qxf3 28.Rd1 b6 29.Rhf1 Qb7?
 (Qg2!) 30.Qxb7+ Kxb7 31.Rxf7 R8e5 32.a4
 Re7 33.Rf6 R2e6 34.Rf8 Rg7 (Rh7!) 35.Rg1
 g5 36.Rh8 h4 37.Rxh4 gxh4 38.Rxg7 Rh6
 39.Rg2 Kc6 40.Kc4 h3 41.Rh2 Rh4+
 42.Kd3 Kc5 43.b4+ Kd5 44.a5 bxa5
 45.bxa5 Kc5 46.c4 Kc6 47.Kc3 Diagram



Kc5?! (Black should make his way in front of
 the enemy passed pawn with Kb7) 48.Kb3 c6
 49.Kb2 Kxc4? (Black still needed to get in front
 of that pawn! everything else is a moot point.
 49...kd6 50.Kc3 Kc7 51.Kb4 Rh5) 50.a6 Kb5
 51.a7 Ra4 52.Rxh3 Rxa7 53.Rh8 Rd7
 54.Kc3 Kc5 55.Ra8 Kb5 56.Rb8+ Kc5
 57.Ra8 Kb6 58.Rb8+ Kc7 59.Rh8
 draw agreed
 1/2-1/2

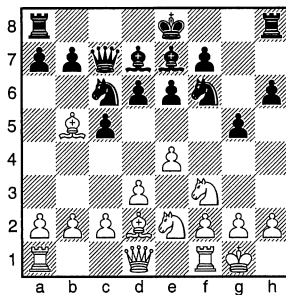
□ Petrak, 1616

■ Henneford, 1506

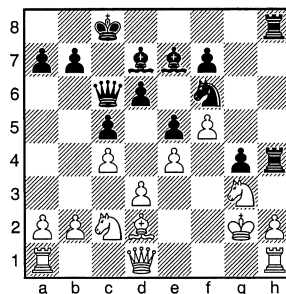
Greater Great Falls Open Rd 2

[Wild Bull Attack]

1.Nc3 Nf6 2.e4 d6 3.Nf3 c5 4.Bc4 Nc6
5.Bb5?! Bd7 6.d3 e6 7.Bg5 Be7 8.0-0 Qc7
9.Ne2?! h6 10.Bd2 g5?! Diagram



(The annotator would point out that pawn structure generally points to a plan. Black's chain is pointing to the Queen side with his c5 pawn leading the charge. White, on the other hand, has his pawn chain pointing to the King side.) 10...a6 followed by b5 is suitable.) 11.g3 e5 12.Kg2 0-0-0 13.c4 g4 14.Ne1 (Nh4 is better) h5 15.f4 h4 16.Bxc6 Qxc6 17.Nc2 hxg3 18.Nxg3 Rh4 19.f5 Rdh8 20.Rh1 Diagram



Nh5 21.Qf1? (Nhx5!) Nxg3 22.Kxg3 Rh3+ 23.Kg2 Rf3 24.Qe2 Rxf5? 25.Raf1 Rxf1 26.Qxf1? f5 27.Ne3 f4 28.Nd5 Bg5 29.Kg1 Rh3 30.b3 Rf3 31.Qxf3? (Qxf3 is not so good as Qe2) gxf3 32.h4 Bd8 33.h5 Bg4 34.h6 Qe8 35.h7 Qh8 (missing a forced mate 35... Bh3!! 36. kh2 and White should win) 36.Kf2 Be6 37.Kxf3 Bxd5 38.cxd5 Bf6 39.Be1 Qf8 40.Bh4 Bh8 41.Rg1 Bg7 42.Bg5 Qf7 43.Rh1 Bh8 44.Rh4 Qg6 (White resigns)

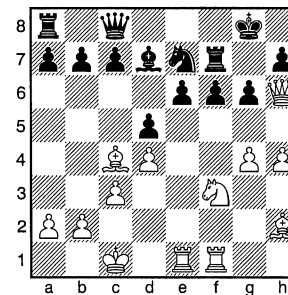
□ Suits, 1873

■ Petrak, 1616

Greater Great Falls Open Rd 1

[Modern Defense]

1.d4 g6 2.Bf4 Bg7 3.e3 d6 4.Nf3 Bg4
5.Be2 Nf6 6.h3 Bd7 7.c3 0-0 8.Nbd2 Qc8
9.Qc2 Nc6 10.0-0-0 Nd5 11.Bh2 Bh6
12.Bc4 Nxe3? (12...Nb6=) 13.fxe3 Bxe3
14.Rde1 Bxd2+ 15.Qxd2 e6 16.Qh6 f6
17.h4 Ne7 18.g4 Rf7 19.Rhf1 d5? Diagram



(Black misses the subtle threats on his kingside) 20.Bd3? (White returns the favor. 20.Ng5 fxg5 21.Rxf7 Kxf7 22.Rf1+ Nf5 23.Qxh7+ Ke8 24.gxf5 gxf5 25.Be5 Qd8 26.Be2 g4 27.Bxg4 Qe7 28.Qg8+ Qf8 29.Bh5+ Ke7 30.Qg5+ Qf6 31.Qf6#) Qf8 21.Qxf8+ Raxf8 22.Bxc7 Nc8 23.g5 fxg5? (23....e5 24.dxe Bh3 25.gxf6 Bxf1 26.Bxf1 Still a daunting position for Black but there is a lot of room for counter play) 24.Nxg5 Rxf1 25.Rxf1 Rxf1+ 26.Bxf1 Ne7 27.Bg3 Nf5 28.Bf2 a6 29.Kd2 h6 30.Nf3 Kg7 31.Ne5 Be8 32.Nf3 Bd7 33.Bg2 Kf6 34.Ne5 Be8 35.c4 Bc6 36.Nxc6 bxc6 37.c5 e5 38.dxe5+ Kxe5 39.b4 g5 40.hxg5 hxg5 41.Bf1 g4 42.Bxa6 g3 43.Bg1 g2 44.Ke2 Ng3+ 45.Kf3 Ne4 46.Kxg2 d4 47.Bd3 Nc3 48.a3 Kd5 49.Kf3 Ke5 50.Bf2 Kd5 51.Kf4 Nb5 52.Bxb5 cxb5 (Black resigns) 1-0

Inland Empire Open

Date:
Saturday-Sunday
April 29-30

Site: Jepson Center, Room 109,
Gonzaga University,
Spokane, Washington

Format: 5 round, Swiss System

Time Control: Game/120 d5

Registration: 8:30-9:30am Saturday
Telephone entries accepted.

Rounds: Sat—10am, 2:30pm, 7pm,
Sun—9am, 1:30pm or ASAP

Prizes: \$750 b/35

1st...\$175 2nd...\$140 3rd...\$100

Biggest Upset...\$35 (both non-prov)

Class Prizes: based on 5 per section

1st (A; B; C; D/E/unrated) \$50

2nd " " \$25

Entry: \$23 by April 28, \$28 at site,
18 and under \$5 less

Entries and Info: Spokane Chess
Club, c/o Dave Griffin, PO Box 631,
Spokane Valley, WA 99037
Phone: (509) 994-9739

Misc: Only one prize per person
(Excluding biggest upset). NC, W.
One 1/2 pt bye if requested before
proceeding round. Sunday byes must
be requested before end of round 3.
Director reserves the right to use class
pairings in the final round

Northwest Chess Grand Prix Event



82nd Montana Open A Montana Chess Grand Prix Event

Location: Ruby's Inn & Convention Center, 4825 N.
Reserve Street, Exit 101 off I-90, Missoula, MT, 59808
Phone: 406-721-0990

HR: \$89 if reserved by March 4, mention chess

Registration: 8:30-9am Saturday

Format: 5 Rd SS **Time Control:** G/120 d5

Rounds: 9:30am, 2pm, 6:30pm, and Sun at 9:00am and
2:30 pm or ASAP

Prizes: \$545 based on 25 paid adult entries:

1st—\$200, 2nd—\$120, 3rd—\$80

Combined classes B/C—\$40, classes D/E—\$35,

Provisional/unrated—\$30

Biggest Upset—\$40 (both must be non-provisional)

Entry Fee: \$30 by March 31, \$35 at site... Juniors at 1/2
Entries payable to MCA. Phone/email entries must be
paid by 9:15 to be paired.

Entries and Info: Dan McCourt, 608 West Central,
Missoula, MT 59801
406-274-0465 mccourt@charter.net

Misc: wheel chair access, MCA membership
required or OSA, 1/2 point byes available, byes
for rds 4-5 must be arranged before leaving Sat night.

MCA annual meeting between rounds 4-5
agenda to be announced

82nd Montana

Open

A Heritage Event
April 1-2

Ruby's Inn & Convention
Center
Missoula, Montana

2017 Idaho Open

Date:
Saturday
April 22

Site: Idaho St. University,
Student Union Building,
1065 S. 8th St., Pocatello, Idaho

Format: 4 round, Swiss System.
Open & U1400 Reserve Sections

Time Control: Rds 1-2 are
G/60 d5; Rds 3-4 are G/90 d5.

Reg: Saturday, 8:00-8:30am or
online at ICA website....

www.idahocheessassociation.com

Rounds: 9am, 11:15am, 2pm,
and 5:15pm.

Prizes: Based on 30 entries

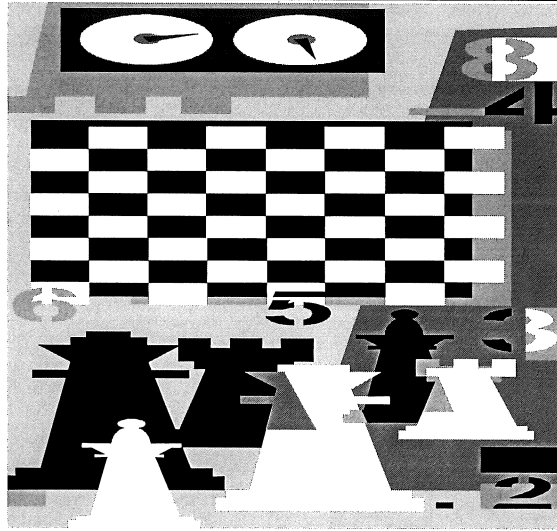
Open: \$200, \$100, \$75

Reserve: \$75, \$50, \$25

Entry: \$30 by 9am Friday, \$25
for 60+/ U18, \$5 late fee at site,
over 80, IMs, FMs, GMs free.

Info: ICA website:
www.idahocheessassociation.com

Misc: ICA & USCF req'd, OSA.
Chess sets provided but not
clocks. Byes: 1/2 pt rds 1-3, 0-pt
for round 4. TD: Jay Simonson



Saturday, May 6 C'MON INN

Location: C'mon Inn, 2775 Expo Parkway, Missoula, Montana, Exit 101,
just off N. Reserve, across N. Reserve from McKenzie Pizza & Starbucks

Format: Four-rounds, Swiss System, Not Rated

Time Control: Game/30, no delay, no insufficient losing chances

Rounds: 1:00pm, 2:45pm, 4:15pm, 5:40pm

Registration: 12:00-12:30 pm Saturday morning.

You MUST be there by 12:30 or lose your entry fee.

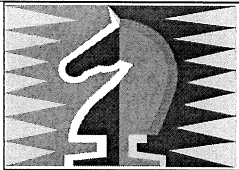
Entry: Early Registration—\$15 Adults; \$5 Juniors and newcomers, \$5
more if paid at the door.

Equipment: Please bring chess equipment. Some will be supplied to
those without.

Prizes: **GUARANTEED.** 1st—\$30, 2nd—\$25, 3rd—\$20, \$16, \$14, \$10,
\$8. Jr. \$7, Newcomers \$10.

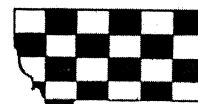
Entries: Mail must be received by May 4:

Greg Nowak, Hellgate Station,
PO Box 8572,
Missoula, MT 59807-8572



Western Montana Unrated Championship

Dan McCourt
608 West Central
Missoula, MT 59801



Montana Chess Association

Montana Chess

UPCOMING EVENTS

- | | | |
|---------------------------------|-----------|-------------|
| • 82nd Montana Open | Missoula | April 1-2 |
| • 2017 Idaho Open | Pocatello | April 22 |
| • Inland Empire Open | Spokane | April 29-30 |
| • Western Montana Chess Unrated | Missoula | May 6 |
| • MIS Scholastic | Missoula | May 20 |