

Montana State Closed Tournament, October 25-26, 2014

#	Name	Rtng	Rd 1	Rd 2	Rd 3	Rd 4	Rd 5	Total	TBrk[M]	TBrk[S]	TBrk[C]
1	David Duke	1860	D3	W2	D4	D6	W5	3.5	11.5	14.0	10.0
2	Guy Stafford	1804	W5	L1	W6	W4	L3	3.0	12.0	14.5	10.0
3	Mark Anderson	1762	D1	D8	W7	L5	W2	3.0	11.5	13.5	8.5
4	William Davis	1905	W9	W7	D1	L2	D10	3.0	11.5	13.0	11.0
5	Jacob Copley	1649	L2	D9	W11	W3	L1	2.5	7.5	12.0	7.0
6	J. Michael Jensen	1840	D8	W11	L2	D1	D9	2.5	7.0	11.5	8.0
7	Sherwood Moore	1685	W11	L4	L3	D8	B---	2.5	6.5	9.5	6.0
8	Robert Martin	1730	D6	D3	D9	D7	U---	2.0	6.0	9.0	7.0
9	Conrad Lee	1764	L4	D5	D8	L10	D6	1.5	10.5	13.5	4.0
10	Wilton Strickland	1778	U---	U---	U---	W9	D4	1.5	1.5	4.5	2.5
11	James Skovron	1818	L7	L6	L5	U---	U---	0.0	4.5	7.0	0.0

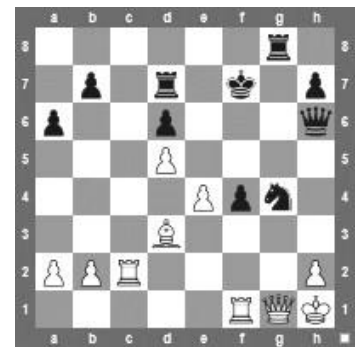
(Newsletter games in bold)

King's Indian: Samish, Panno main line (E84)

Mark Anderson (1762)

David Duke (1860)

1. d4 Nf6 2. c4 g6 3. Nc3 Bg7 4. e4 d6 5. f3 O-O 6. Be3 Nc6 7. Nge2 a6 8. Qd2 Rb8 9. Rc1 e5 10. d5 Ne7 11. c5 Nd7 12. cxd6 cxd6 13. Ng3 f5 14. Bf2 Rf7 15. Bd3 Qf8 16. Qc2 Bh6 17. Rd1 Nf6 18. O-O f4 19. Nge2 g5 20. Kh1 g4 21. Na4 Ng6 22. Nb6 Bg5 23. Nxc8 Rxc8 24. Qb3 Qh6 25. Be1 Bh4 26. Qb6 Rd7 27. Bb4 Bg3 28. Qg1 Bh4 29. Rc1 Rf8 30. Rc2 Kf7 31. Bd2 Rg8 32. fxc4 Nxc4 33. g3 Bg5 34. gxf4 Bxf4 35. Nxf4 Nxf4 36. Bxf4 exf4 37. Qg3 (37. Rg2 Nf6 38. Rxc8 Nxc8 39. Qg4 +3.1 White) 37... Ne5 38. Qxf4+ Qxf4 39. Rxf4+ Ke7 40. Bf1 Rf8 41. Rxf8 Kxf8 42. Bh3 Rg7 43. Rc1 Kf7 44. Rc7+ Kf6 45. Rxc7 Kxc7 46. Bc8 Nc4 47. Bxb7 a5 48. b3 Nd2 49. Kg2 Nxe4 50. Bc6 Nc3 51. a3 Kf6 52. b4 axb4 53. axb4 Ke5 54. b5 Nxd5 55. b6 1/2-1/2



Position after 36...exf4



Position after 8...Qh3

English: King's Indian Defense, 2. Nc3 (A21)

David Duke (1860)

Guy Stafford (1804)

1. c4 e5 2. Nc3 Bc5 3. Nf3 Nc6 4. g3 Nf6 5. Bg2 d6 6. O-O Bf5 7. d3 Qd7 8. Nd5 Bh3 9. Nxc7+ (9. Bxh3 Qxh3 10. Nxc7+ +2.6 White) 9... Qxc7 10. Bxh3 h6 11. a3 g5 12. Bg2 Ng4 13. b4 Bd4 14. Nxd4 exd4 15. e3 Nge5 16. b5 Ne7 17. exd4 N5g6 18. Qf3 Rb8 19. Bd2 f5 20. Rae1 O-O 21. Qh5 Kg7 22. Re6 Rbe8 23. Rfe1 Qd7 24. h4 Rh8 25. hxg5 hxg5 26. Qxg5 Rhf8 27. Bf4 Rf7 28. Bxd6 1-0

Sicilian: Accelerated Fianchetto (B34)

William Davis (1905)

David Duke (1860)

1. e4 c5 2. Nf3 Nc6 3. d4 cxd4 4. Nxd4 g6 5. Nc3 Bg7 6. Be3 Nf6 7. Qd2 O-O 8. f3 d5 9. O-O-O Nxd4 10. Qxd4 e6 11. Qd2 Qa5 12. Kb1 dxe4 13. Nxe4 Qe5 14. Nxf6+ Qxf6 15. c3 e5 16. Bd3 Be6 (16... Rd8 17. Qc2 Rxd3 18. Rxd3 Bf5 +0.1 White) 17. Bg5 Bxa2+ 18. Kxa2 Qe6+ 19. Kb1 a5 20. Be4 a4 21. Qd6 Qc4 22. Qd3 Qc7 23. Qd6 Qc4 24. Qd5 Qa6 25. Be7 Rfe8 26. Ba3 Bf8 27. Qxb7 Qe2 28. Qd5 Rab8 29. Qd2 Qxd2 30. Rxd2 Bxa3 31. Ka2 Be7 32. Bc6 Red8 33. Rhd1 Rdc8 34. Bxa4 Ra8 35. b3 Rxc3 36. Kb2 Rac8 37. Bb5 Bb4 1/2-1/2



Position after 16...Qd3



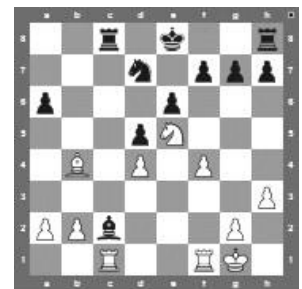
Position after 23...Rh1

Bird Opening: Lasker variation, 3...g6 (A03)**Wilton Strickland (1778)****Conrad Lee (1764)**

1. f4 d5 2. Nf3 Nf6 3. e3 g6 4. b3 Bg7 5. Bb2 O-O 6. Be2 c5 7. O-O Nc6 8. Ne5 h5 9. Bf3 Nd7 10. Nxc6 bxc6 11. Bxg7 Kxg7 12. d3 Nb6 13. Nd2 e6 14. e4 Bd7 15. c4 Qf6 16. Qe2 Rac8 17. g3 h4 18. e5 Qe7 19. Bg4 hxg3 20. hxg3 Rh8 21. Kg2 Rh7 22. Nf3 Rch8 23. Rh1 Qf8 (23... Rxf1 +0.6 White) 24. Ng5 Rxh1 25. Rxh1 a5 26. Qd2 Rxh1 27. Kxh1 Qa8 28. Qh2 Qg8 29. Qh4 Be8 30. Nh3 Nd7 31. Qd8 f5 32. Bf3 Kh6 33. Ng5 d4 34. Qe7 Qf8 35. Qh7# 1-0

Caro-Kann: Exchange, 4. Nf3 Nf6 (B13)**Jacob Copley (1649)****Mark Anderson (1762)**

1. e4 c6 2. Nf3 d5 3. exd5 cxd5 4. d4 Nf6 5. Be2 Nc6 6. O-O Bg4 7. h3 Bh5 8. c3 e6 9. Bg5 Be7 10. Qd3 Qb6 11. Nbd2 Bg6 12. Qb5 Qxb5 13. Bxb5 a6 14. Bxc6+ bxc6 15. Ne5 Rc8 16. Ndf3 Be4 17. Nd2 Bf5 18. c4 Bb4 19. cxd5 Bxd2 20. Bxd2 cxd5 21. Bb4 Nd7 22. Rac1 Bc2 23. f4 f6 (23... Nxe5 24. fxe5 Rc4 +0.6 White) 24. Rf2 fxe5 25. Rfxc2 Rxc2 26. Rxc2 Kd8 27. fxe5 Re8 28. Bd6 g6 29. Rc6 Nf8 30. Rxa6 Kd7 31. b4 Rc8 32. Bc5 g5 33. b5 Ng6 34. Ra7+ Ke8 35. Rxh7 Ra8 36. Rg7 Rxa2 37. Rxg6 1-0



Position after 23.f4



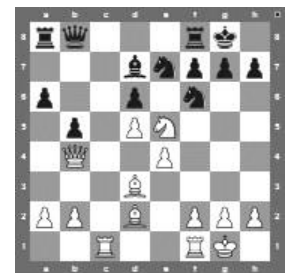
Position after 26...xf5

Alekhine: Exchange, 5...cxd6 (B03)**Sherwood Moore (1685)****Jim Skovron (1818)**

1. e4 Nf6 2. e5 Nd5 3. c4 Nb6 4. d4 d6 5. exd6 cxd6 6. Nf3 Bg4 7. h3 Bh5 8. a3 Nc6 9. Be3 e6 10. Bd3 Be7 11. Nbd2 Bf6 12. Qc2 Rc8 13. b3 Bg6 14. O-O Ne7 15. Rac1 Ned5 16. Qb1 Nxe3 17. fxe3 O-O 18. Ne4 Be7 19. Rcd1 f5 20. Ng3 Bg5 21. Rde1 d5 22. Ne5 Nd7 23. Nxd7 Qxd7 24. cxd5 Qxd5 25. Bc4 Qd6 26. Nxf5 b5 {played the combination out of sequence} (26... Rxf5 27. Rxf5 b5 28. Re5 bxc4 +3.7 Black) 1-0

QGD: Chigorin, Tartakower Gambit (D07)**Guy Stafford (1804)****Jacob Copley (1649)**

1. d4 d5 2. c4 Nc6 3. Nc3 e5 4. cxd5 Nxd4 5. e3 Nf5 6. Nf3 Bd6 7. Qa4+ Bd7 8. Nb5 a6 9. Nxd6+ cxd6 10. Qb4 Qc7 11. Bd2 b5 12. Bd3 Nfe7 13. e4 Nf6 14. Rc1 Qb8 15. O-O O-O 16. Nxe5 dxe5 (16... Nexd5 17. exd5 dxe5 +1.0 White) 17. Qxe7 Re8 18. Qa3 Qb7 19. Ba5 Nxd5 20. exd5 Qxd5 21. Rfd1 Qe6 22. Be4 Rac8 23. Bc7 b4 24. Qxb4 Bb5 25. a4 Be2 26. Re1 Bh5 27. Qd6 Qb3 28. Bf5 Ra8 29. Bd7 Rf8 30. Qxe5 Bg6 31. Ba5 Qb7 32. Bd2 f6 33. Qe7 Kh8 34. Bg4 Qb6 35. Bf3 Rac8 36. Qb7 Rb8 37. Qxb6 Rxb6 38. Re7 1-0



Position after 16...xe5



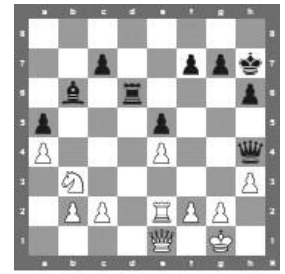
Position after 32...Bb6

Two Knights: Modern, 5.e5 d5 (C55)**Mike Jensen (1840)****Guy Stafford (1804)**

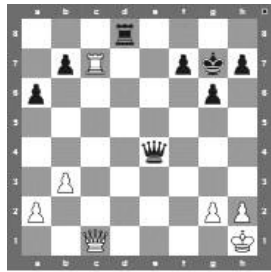
1. e4 e5 2. Nf3 Nc6 3. d4 exd4 4. Bc4 Nf6 5. e5 d5 6. Bb5 Ne4 7. Nxd4 Bc5 8. O-O O-O 9. Nxc6 bxc6 10. Bxc6 Ba6 11. Be3 (11. Qxd5 Bxf1 12. Qxe4 Bb5 13. Nc3 0.28 Black) 11... Bxf1 12. Bxa8 (12. Bxc5 Nxc5 13. Qxf1 Rb8 0.95 Black) 12... Bxe3 13. fxe3 Qh4 (13... Bxg2 14. Qg4 Re8 15. Kxg2 Rxe5 3.52 Black) 14. Qxf1 Rxa8 15. Na3 Rb8 16. b3 Qe7 17. Qa6 Qxe5 18. Rf1 c6 19. Qxa7 Nf6 20. c4 Re8 21. cxd5 cxd5 22. Nc2 Qc3 23. Rf2 Re4 24. Qa8+ Re8 25. Qa7 h5 26. Qd4 Qa5 27. a3 Re4 28. Qd2 Qc5 29. b4 Qd6 30. h3 Rc4 31. Rf4 Ne4 32. Qe2 (32. Qd1 Qe5 33. Nd4 Rc3 34. Nf3 0.00) 32... Qb6 (32... Qc7 33. Ne1 Rc1 34. Rf1 3.89 Black) 33. Nd4 (33. Qxh5 Qe6 34. Nd4 Ng3 0.72 White) 33... Rc1+ 34. Rf1 Ng3 35. Rxc1 Nxe2+ 36. Nxe2 Qxe3+ 37. Kf1 Qxa3 38. b5 0-1

Scotch (C45)
Conrad Lee (1764)
Jacob Copley (1649)

1. e4 e5 2. Nf3 Nc6 3. d4 exd4 4. Nxd4 Bc5 5. Nxc6 bxc6 6. Bd3 d6 7. O-O Nf6 8. h3 O-O 9. Nd2 Re8 10. Nb3 Bb6 11. Qf3 h6 12. a4 a5 13. Bd2 Bb7 14. Bc3 Nd7 15. Bc4 Qe7 16. Rfe1 Ne5 17. Bxe5 dxe5 18. Rad1 Ba6 19. Bxa6 Rxa6 20. Qc3 Qh4 21. Rd2 Kh7 22. Qc4 Raa8 23. Qxc6 Rad8 24. Qc3 Rd6 25. Ree2 Rxd2 26. Qxd2 Rd8 27. Qe1 Rd6 28. Nd2 (28. Nxa5 Qg5 29. Kh2 Bxa5 30. Qxa5 Rd1 1.6 White) 28... Rg6 29. Kh1 Rf6 30. Nf3 Rxf3 31. gxf3 Qxh3+ 32. Kg1 Qg3+ 1/2-1/2



Position after 27...Rg6



Position after 29...Kc1

English: Symmetrical, 2...g6 (A34)
David Duke (1860)
J Michael Jensen (1840)

1. c4 c5 2. Nc3 g6 3. d4 cxd4 4. Qxd4 Nf6 5. e4 Nc6 6. Qd2 Bg7 7. Bd3 d6 8. Nge2 Bd7 9. O-O O-O 10. b3 a6 11. Bb2 Ne5 12. Rac1 Nxd3 13. Qxd3 Qa5 14. Rc2 Bc6 15. f3 Rac8 16. Rfc1 Rfd8 17. Kh1 e6 18. Qd2 Qh5 19. Qe1 d5 20. cxd5 exd5 21. exd5 Nxd5 22. Nxd5 Qxd5 23. Bxg7 Kxg7 24. Nc3 Qf5 25. Ne4 Bxe4 26. fxe4 Qe6 27. Rc7 Rxc7 28. Rxc7 Qxe4 29. Qc1 Qe2 30. Qc3+ Kg8 31. h3 Qf1+ 32. Kh2 Qf4+ 33. Qg3 Qxg3+ 34. Kxg3 Rd2 35. Rxb7 Rxa2 36. b4 Ra3+ 37. Kf2 1/2-1/2