

The Montana Chess Newsletter

Montana Chess Association

INSIDE THIS ISSUE:

72nd Montana Open 1

Participants for Closed Barto decided 2

Game result challenged at Open 2

MCA Business Meeting Held 2

Feature Montana Game 3

Upcoming Tournaments 3

Grand Prix Standings 4

THE 72ND MONTANA OPEN HELD IN MISSOULA BY: BILL MCBROOM



Missoula hosted the 72nd State Open the weekend of April 21 and 22. A total of 35 players participated—the largest turnout in a number of years. Arman Goplen came all the way from North Dakota and he brought a friend, Steven Legenfelder. The Harmans brought their young sons (Carl, 12, and Luke, 8) from Boise. Luke did well and got the respect of every player with whom he played. This was virtually a certainty after beating a strong A player in the first round. And, of course, our friends from Spokane (and environs) came out in force: contributing nine of the total number of participants.



Speaking of our Spokane comrades, David Griffin made a very generous donation of \$100. We were able to sweeten the prize fund nicely. Thanks, Dave!

John Julian of Spokane started on board one and stayed there four five rounds. In earning his first place with 4 ½ points (and \$175), he was obliged to take on a C player, a strong B player and three A players. There was a three-way tie for second-third involving Michael Murray (Seattle), Phil Weyland (Post Falls), and Zach Countryman (Spokane)—each had a score of 4 and shared \$150. The best the C players could do was an even score and this was accomplished by Ron Weyland of Post Falls, ID, Missoula’s Bob Rajala, and eight-year-old Luke Harman from Boise. In contrast, one D player (Ward Chow of Spokane) and a Missoula

unrated (Eric Eklund) each earned a plus score of three points.

The State Open concludes the 2006-2007 grand prix cycle and is the last part of the process of seeding the six players in the Closed/Barto (June 9 and 10 in Butte). Billings is the site for the 2008 State Open and the new Executive Board will soon select a date (in April) and secure a location.



Black to move and win. From Round 2. EdMcLaughlin-John Julian. 44...? (Answer next page)



PARTICIPANTS FOR CLOSED BARTO DECIDED

The 2007 Montana Open marked the end of the Grand Prix points season. With this contest finished the MCA was able to announce the 6 players who will be invited to the Closed Barto and compete for the title of Montana State champ.

The first player seeded is last year's champ, Mike Jensen.

The next two seeds are the Montana players with the most Grand Prix points for the 2006-2007 season. That honor was won by a landslide by David Duke and Jim Skovron who both more than doubled the next highest point winner. The last three invitations go to the Montana player with the highest scores in the Montana

Open. Those players are Jens Lundell, Ed McLaughlin and Romie Carpenter.

The tournament, a 5-round round robin, will be held on June 9th and 10th at the Best Western Inn in Butte in conjunction with the Open Barto Satellite Tournament. Wish all 6 of these talented players good luck!



The Closed Barto determines the Montana State Champion!

GAME RESULT CHALLENGED AT OPEN

There was a battle both on and off the board during the fourth round of the Montana Open Sunday, May 22nd. Two players were duking it out on the back table with pieces flying off the board. With nothing left but kings, queens and three pawns apiece, Black made a comment somewhere along the lines of, "It looks like a draw." White replied, "Yes it does, but let's find out." Black took this to be an acceptance of a draw offer, while White saw this as a refusal of a draw offer.

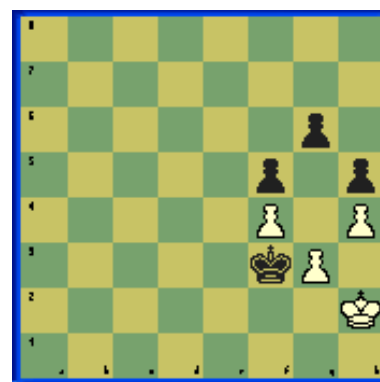
Both players continued to move pieces, record moves and kibitz about the position being "drawish" until Black made a mistake [diagram]. The game continued 1...Kg4? at which point Black commented incorrectly, "It's a stalemate." White looked for a moment, played 2. Kg2 and said, "play on". The game continued 2...g5 3. hxg5 and went on for a number of moves until, two moves before checkmate, White asked, "Do you want to play on?"

Bewildered, Black replied, "It was a draw 15 moves ago," explaining further that he hadn't really been playing seriously for the last 15 moves.

Tournament director Bill McBroom was called over and the players went to the analysis room to present their respective cases. Witnesses were called in and the game was replayed move by move. Not having enough evidence to determine if a draw offer was in fact made and/or accepted, McBroom made the decision to call the game a draw. White took his dispute to the on-site appeals committee which upheld McBroom's decision. Both parties seemed amenable to the appeals committee's decision.

In a pointed message on the website, McBroom cautions players, "The lesson of this is make sure you and your opponent have the same understanding and promptly sign both score sheets with the outcome indicated...Analysis in the playing hall is not only proscribed in most tournaments, but it also

risks the sort of misunderstanding described here."



Black to move-A draw is inevitable after 1...Kf2

Answer to puzzle on previous page:
44...Qxf2! 45. Qxf2 {45. Nxf2? Ng3#}
Ng3+ 46. Qxg3 hxg3

MCA BUSINESS MEETING HELD

Keeping with tradition, the MCA's annual business meeting was held between Rounds 4 and 5 of the Montana Open on April 22nd. The agenda, described as "vanilla" by President Bill McBroom, included general reports from the departments as well as the election of officers.

Secretary Dan McCourt reported that the MCA coffers had about \$550 and that number would probably increase after all of the dust settled from the Montana Open. President Bill McBroom gave an update on the trial of an MCA member with a history of disruptive behavior (details are on the website). The trial is scheduled for June 10th before the 4th

round of the Barto Memorial tournament in Butte.

As for election of officers, Bill McBroom accepted the nomination for president stating that he had some unfinished business he wants to tie up. Jim Skovron wanted to "give someone else a chance" as Executive VP and declined the nomination. Bob Martin dutifully stepped in. The Eastern and Western Vice President offices were filled by David Duke and Adam Milligan respectively. And Dan McCourt will serve another term on the Executive Board as Secretary/Treasurer.

In other news, the MCA has been invited

to send a team to a Tri-State match along with Washington and Idaho. There was little information as to the format of the match (i.e. number of players, how to deal with an odd number of teams, the location of the match, etc.), but Bill McBroom volunteered to follow up and disseminate information as he gets it.

In the "Good and Welfare" section of the meeting, a hearty "thank you" and well-deserved round of applause was offered to the numerous player who traveled from Washington, Idaho, and even North Dakota to make the 72nd Montana Open one of the most well attended Montana tournaments in some time.

FEATURE GAME— “THE CRIMINAL” - THIS EDITION OF THE GAME OF THE DAY COMES FROM THE FIRST ROUND OF THE 2007 MONTANA OPEN. BRETT THOMAS-DEJONG FINDS OUT THE HARD WAY AGAINST STEPHEN TAMANG THAT NIMZOWITCH WAS PROBABLY RIGHT WHEN HE SAID, “THE PASSED PAWN IS A CRIMINAL, WHO SHOULD BE KEPT UNDER LOCK AND KEY; MILD MEASURES, SUCH AS POLICE SURVEILLANCE, ARE NOT SUFFICIENT.”

[Event "72nd Montana Open"]
 [Round "1"]
 [White "Brett Thomas-DeJongh"]
 [Black "Stephen Tamang"]
 [Result "0-1"]

1. e4 c5 2. d4 cxd4 3. c3 dxc3 4. Nxc3

{The Smith-Morra gambit. [diagram 1]. A pet line of Brett's. The plan is to open lines for white's pieces and create lasting initiative from his lead in development. Black's plan is to develop quickly and hopefully get to a pawn-up endgame}

4...Nc6 5. Bc4 e6 6. Nf3 Qc7 7. O-O Nf6 8. Nb5

{If 8. Qe2 Black can play the notorious “Siberian Trap”! 8...Ng4 9. h3 Nd4! Winning the Queen.}

8...Qb8 9. Re1

{A little bit too passive. 9. e5! is necessary. In these gambit openings it is important to keep the initiative. Play might have continued 9. e5 Nxe5 10. Nxe5 Qxe5 11. Re1 Qc5 12. Qe2 a6 13. Be3 Qe5 14. f4 Qb8 15. Nc3 [diagram 2] and White has a grotesque lead in development in exchange for the two pawns. (Toga II)}

a6 10. Nbd4 Bb4 11. Bd2 Bxd2 12. Qxd2 Nxd4 13. Qxd4 O-O 14. Rad1 b5 15. Bb3?

{This move gives away the advantage. Again 14. e5 was the correct move.}

Bb7 16. Ne5 Rd8 17. Rd3 d6 18. Nf3 Qc7 19. Rc3 Qe7 20. Qb6 Bxe4

{and the passed pawn comes into being! Incidentally, if Black captures with the knight, then 21. Rc7! winning the Bishop.}

21. Nd4 Nd5 22. Bxd5 Bxd5 23. Rc7 Rd7 24. Nc6 Bxc6 25. Qxc6 Rad8 26. Rxd7 Qxd7 27. Qxa6 d5 28. Rc1 d4 29. Rc5

{Not paying enough attention to the threat of a passed pawn. 29. Qc6! Qxc6 30. Rxc6 d3 31. Rc1 f5. 32. f3 e5 33. Kf2 f4 34. a3 h6 35. Rd1 Rd4 36. b3 Kf7. 37 Rd2 [diagram 3]. And it is difficult for black to make progress without losing the passed pawn.}

29...d3 30. Rc1 d2 31. Rd1 Qc7 32. Kf1?

{Loses immediately. 23 Qxb5 may have held for a little longer. 23...Qc1 24. Qe2 Qxb2 25. a4. Now both of black's major pieces are tied down to defending the d-pawn and white has a passed a pawn to draw one of them away. Brett is still down, but with this much material on the board he may be able to hold the draw.}

32...Qc4+ 0-1

{33. Kf1 Qc1 and white loses the rook to avoid the back rank mate.}

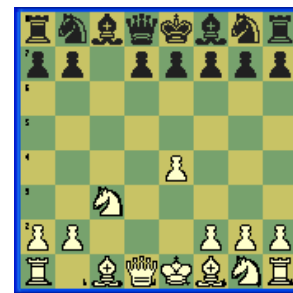


Diagram 1-Smith-Morra Gambit



Diagram 2-Ahead in development

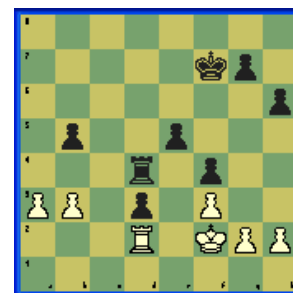


Diagram 3-Tough to make progress

Upcoming Tournaments (see story on page 2 for information on the Closed Barto being held in June!)

May 19th, 2007

First Annual Kalispell Chess Tournament

LOCATION:
 Kalispell Christian Church
 1075 Foys Lake Road
 Kalispell, MT

DESCRIPTION:
 Registration: 9:00-9:30
 Four Round Swiss
 10: 00, 11:30, 1:30, 3:30
 G=30, G=30, G=45, G=60

ENTRY FEE: \$10

PRIZES:
 1ST \$100, 2ND \$50

CONTACT:
 Adam Milligan
 1.406.857.3206
 milligan@bresnan.net

June 10th, 2007

2007 Barto Memorial Satellite

LOCATION:
 Location: Best Western Butte Plaza
 Inn; 2900 Harrison (by Harrison Ave. I-90 exit); 800.543.5814 for reservations (mention Montana Chess)

DESCRIPTION:
 5R Swiss
 Time Control: g=120

Registration: 9:00-9:30
 Mandatory players meeting 9:45
 Rounds 10:00, 2:30, and 7:00 Sat.;
 9:00 and 2:00 Sun
 NS, NC, wheel chair accessible
ENTRY FEE:
 EF=\$25 by June 7, \$30 at the door,
 Juniors 1/2 price;
PRIZES:
 1st=\$75, 2nd=\$50 (based on 15 paid adults)

CONTACT:
 William H. McBroom
 2321 Raymond Ave.
 Missoula, MT 59802
 checks to "MCA"
 for info: 406.728.4654--no phone entries

Montana Chess Association

Adam Milligan
MCN Editor/Western VP
PO Box 319
Somers, MT 59932

Phone: 406-857-3206
E-mail: milligan@bresnan.net



Visit the website !
www.montanachess.org



Montana Chess Association

Promoting a love of the game in Montana!

THE MONTANA CHESS ASSOCIATION



From the MCA Constitution

“The purposes of the Montana Chess Association are to support interest in chess, further chess education, and promote activities that enhance members’ enjoyment of the game.”

Executive Board:

President:

William McBroom

Executive Vice President:

Bob Martin

Eastern Vice President:

David Duke

Western Vice President:

Adam Milligan

Secretary/Treasurer:

Dan McCourt

MCN Editor:

Adam Milligan

Current Grand Prix Standings

****Duke, David-49.92**

****Skovron, Jim-42.56**

McLaughlin, Ed-17.1

McCourt, Dan-14.8

Lundell, Jen-14.42

Jensen, J. Mike-13.79

Martin, Rober-9.28

Hay, John-9.26

Carpenter, Romie-8.69

McBroom, William-5.55

Pallares, Henry-5.55

Thomas, Brett-5.55

Eklund, Eric-4.6

****State Closed Championship qualifiers**

